

CHANGE: SID TNT 6X MODIFIED

SID (CAT H)

Nota generale

Procedure al di fuori degli spazi aerei controllati.

General remark

Procedures outside controlled airspace.

OZE 5Z

Dopo il decollo continuare prua pista (TR 358°) fino ad intercettare e seguire RDL 353 TNT VOR (TR 353°) fino al punto RDL 353/16 NM TNT VOR/DME, quindi virare a destra per intercettare e seguire RDL 225 OZE VOR per OZE VOR/DME.

OZE 5Z

After take-off proceed on runway heading (TR 358°) until intercepting and following RDL 353 TNT VOR (TR 353°) until point RDL 353/16 NM TNT VOR/DME, then turn right to intercept and follow RDL 225 OZE VOR bound to OZE VOR/DME.

Nota

Minimo gradiente di salita 730 ft/NM (12%) fino a lasciare 4000 ft, e 523 ft/NM (8.6%) fino a lasciare 9500 ft.

Remark

Minimum climb gradient 730 ft/NM (12%) until leaving 4000 ft, and 523 ft/NM (8.6%) until leaving 9500 ft.

MCA/MCL: RDL 353/16 NM TNT VOR/DME 9500 FT; OZE VOR/DME FL 125

TNT 6X

Dopo il decollo procedere su TR 193° fino ad intercettare e seguire RDL 208 TNT VOR (TR 208°) fino al punto RDL 208/17 NM TNT VOR/DME, quindi virare a sinistra per TNT VOR/DME.

TNT 6X

After take-off proceed on TR 193° until intercepting and following RDL 208 TNT VOR (TR 208°) until point RDL 208/17 NM TNT VOR/DME, then turn left bound to TNT VOR/DME.

Nota

Causa ostacoli rilevanti situati a Sud dell'aeroporto, il decollo dovrà avvenire in VMC fino alla quota di 5000 ft ed in ogni caso mantenendo un gradiente non inferiore a 517 ft/NM (8.5%).

Remark

Due to relevant obstacles South of the airport, take-off should be performed in VMC conditions until 5000 ft and always maintaining a climb gradient not less than 517 ft/NM (8.5%).

MCA/MCL: RDL 208/11 NM TNT VOR/DME 7000 FT; RDL 208/17 NM TNT VOR/DME 8000 FT; TNT VOR/DME FL 125

TNT 5Z

Dopo il decollo continuare prua pista (TR 358°) fino ad intercettare e seguire RDL 353 TNT VOR (TR 353°) fino al punto RDL 353/16 NM TNT VOR/DME, quindi virare a destra per TNT VOR/DME.

TNT 5Z

After take-off proceed on runway heading (TR 358°) until intercepting and following RDL 353 TNT VOR (TR 353°) until point RDL 353/16 NM TNT VOR/DME, then turn right bound to TNT VOR/DME.

Nota

Minimo gradiente di salita 730 ft/NM (12%) fino a lasciare 4000 ft, e 500 ft/NM (8.2%) fino a lasciare 8200 ft.

Remark

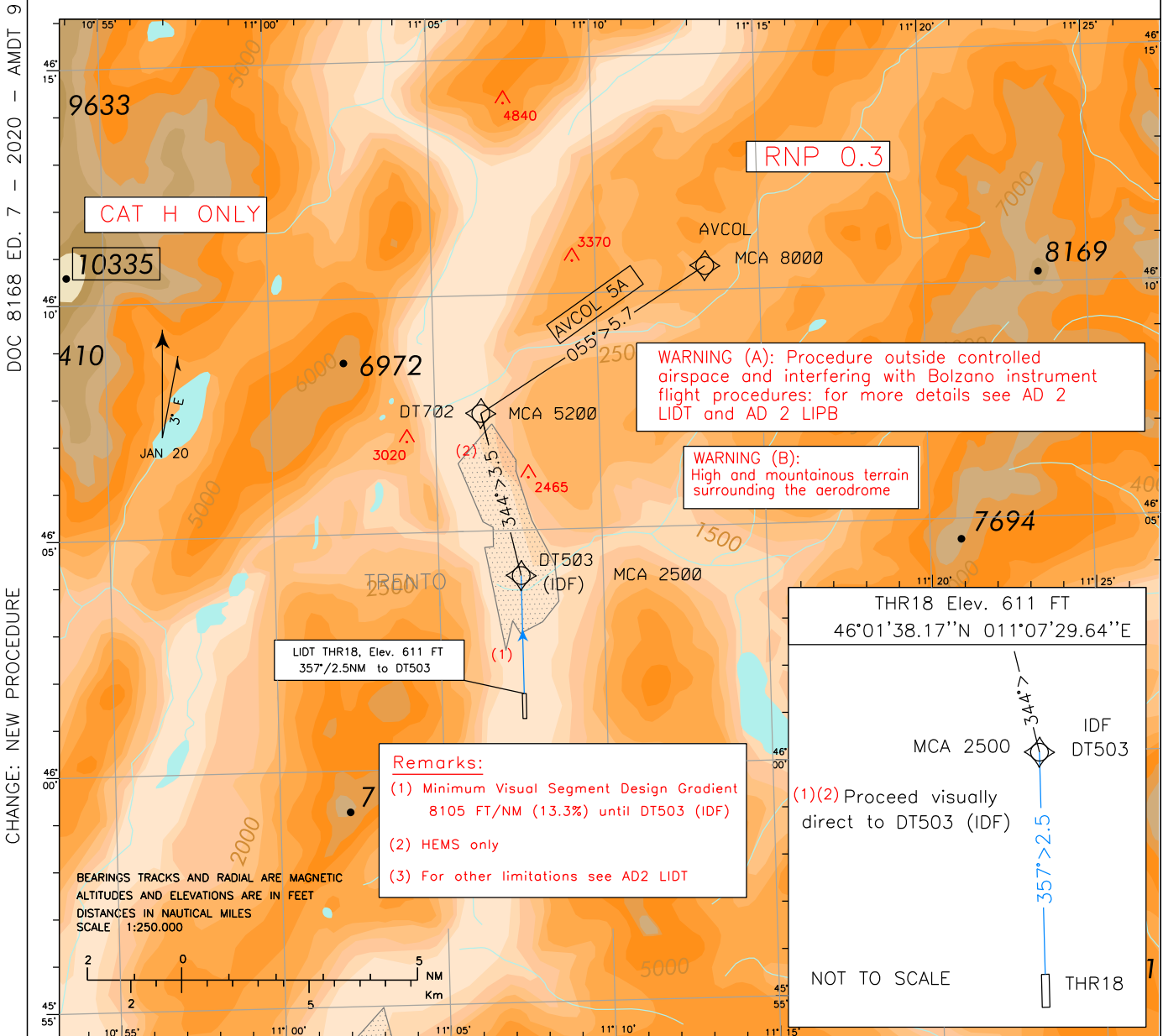
Minimum climb gradient 730 ft/NM (12%) until leaving 4000 ft, and 500 ft/NM (8.2%) until leaving 8200 ft.

MCA/MCL: RDL 353/16 NM TNT VOR/DME 8200 FT; TNT VOR/DME FL 125

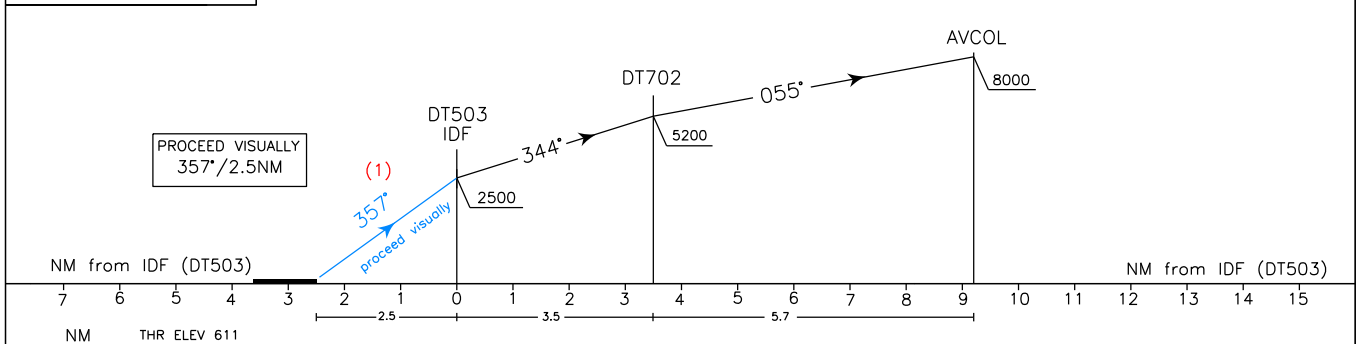
Intenzionalmente bianca

Intentionally left blank

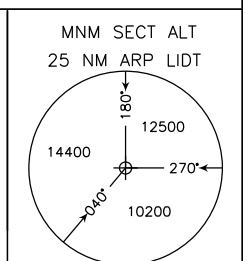
Remarks: (5) EGNOS/SBAS augmentation required	Padova ACC	120.725	AD ELEV	L I D T	TRENTO/Mattarello RNP Departure AVCOL 5A
	Padova FIC	124.150	610		
	AFIS Trento Aerodrome Info	119.650			
	AFIS Bolzano Aerodrome Info	120.600			



TRANSITION ALT 10000



	Min Climb (FT/NM)	FT/min at GS			
		60	70	80	90
Visual to DT503	810 (13.3%)	810	945	1080	1215
DT503 to DT702	770 (12.7%)	770	900	1025	1155
DT702 to AVCOL	490 (8.1%)	490	570	655	735



Trento RNP AVCOL 5A Departure

Path Terminator	Waypoint identifier	Flyover	Course/Track °M (°T)	Turn Direction	Altitude Constraint (ft)	Speed Limit (kt)	Leg Distance (NM)	Navigation Specification
IF	DT503 (IDF)	-	-	-	+2500	-	-	RNP 0.3
TF	DT702	-	344 (347.5)	-	+5200	-	3.5	RNP 0.3
TF	AVCOL	-	055 (058.1)	-	+8000	-	5.7	RNP 0.3

Waypoints Table formatted according ARINC 424 standards

Waypoint	Latitude	Longitude
DT503	N46040333	E011072981
DT702	N46073066	E011062384
AVCOL	N46103102	E011132082

Remarks:

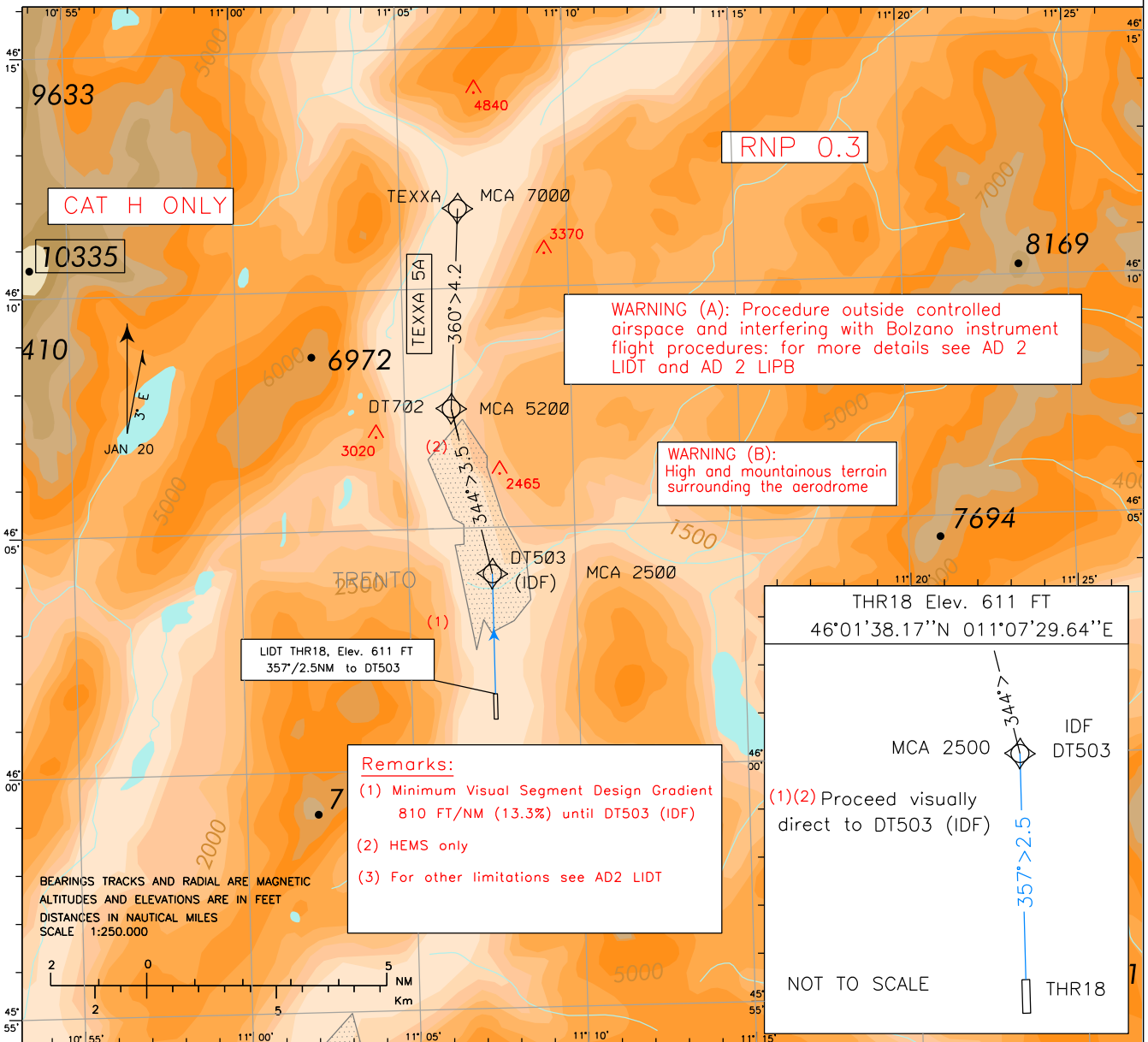
(5) EGNOS/SBAS augmentation required

Padova ACC	120.725	AD ELEV	L I D T
Padova FIC	124.150	610	
AFIS Trento Aerodrome Info	119.650		
AFIS Bolzano Aerodrome Info	120.600		

TRENTO/Mattarello
RNP Departure
TEXXA 5A

DOC 8168 ED. 7 – 2020 – AMDT 9

NEW CHART

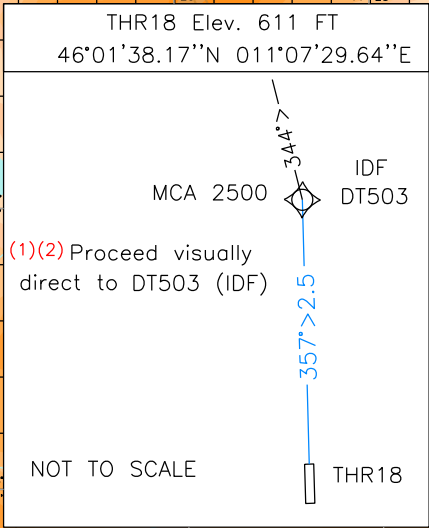


WARNING (A): Procedure outside controlled airspace and interfering with Bolzano instrument flight procedures: for more details see AD 2 LIDT and AD 2 LIPB

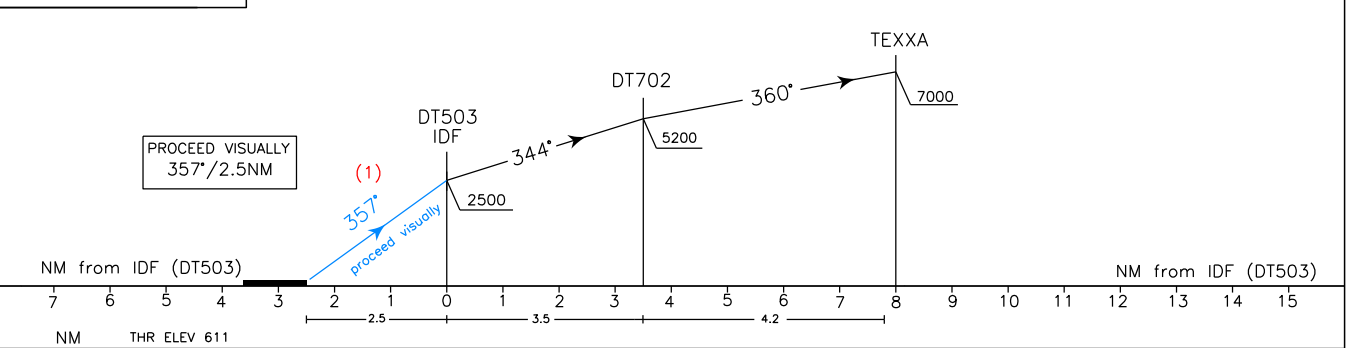
WARNING (B): High and mountainous terrain surrounding the aerodrome

LIDT THR18, Elev. 611 FT
357°/2.5NM to DT503

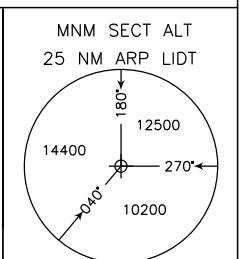
Remarks:
(1) Minimum Visual Segment Design Gradient 810 FT/NM (13.3%) until DT503 (IDF)
(2) HEMS only
(3) For other limitations see AD2 LIDT



TRANSITION ALT 10000



	Min Climb (FT/NM)	FT/min at GS			
		60	70	80	90
Visual to DT503	810 (13.3%)	810	945	1080	1215
DT503 to DT702	770 (12.7%)	770	900	1025	1155
DT702 to TEXXA	430 (7.1%)	430	505	575	645



Trento RNP TEXXA 5A Departure

Path Terminator	Waypoint identifier	Flyover	Course/Track °M (°T)	Turn Direction	Altitude Constraint (ft)	Speed Limit (kt)	Leg Distance (NM)	Navigation Specification
IF	DT503 (IDF)	-	-	-	+2500	-	-	RNP 0.3
TF	DT702	-	344 (347.5)	-	+5200	-	3.5	RNP 0.3
TF	TEXXA	-	360 (003.3)	-	+7000	-	4.2	RNP 0.3

Waypoints Table formatted according ARINC 424 standards

Waypoint	Latitude	Longitude
DT503	N46040333	E011072981
DT702	N46073066	E011062384
TEXXA	N46114034	E011064450