

SID

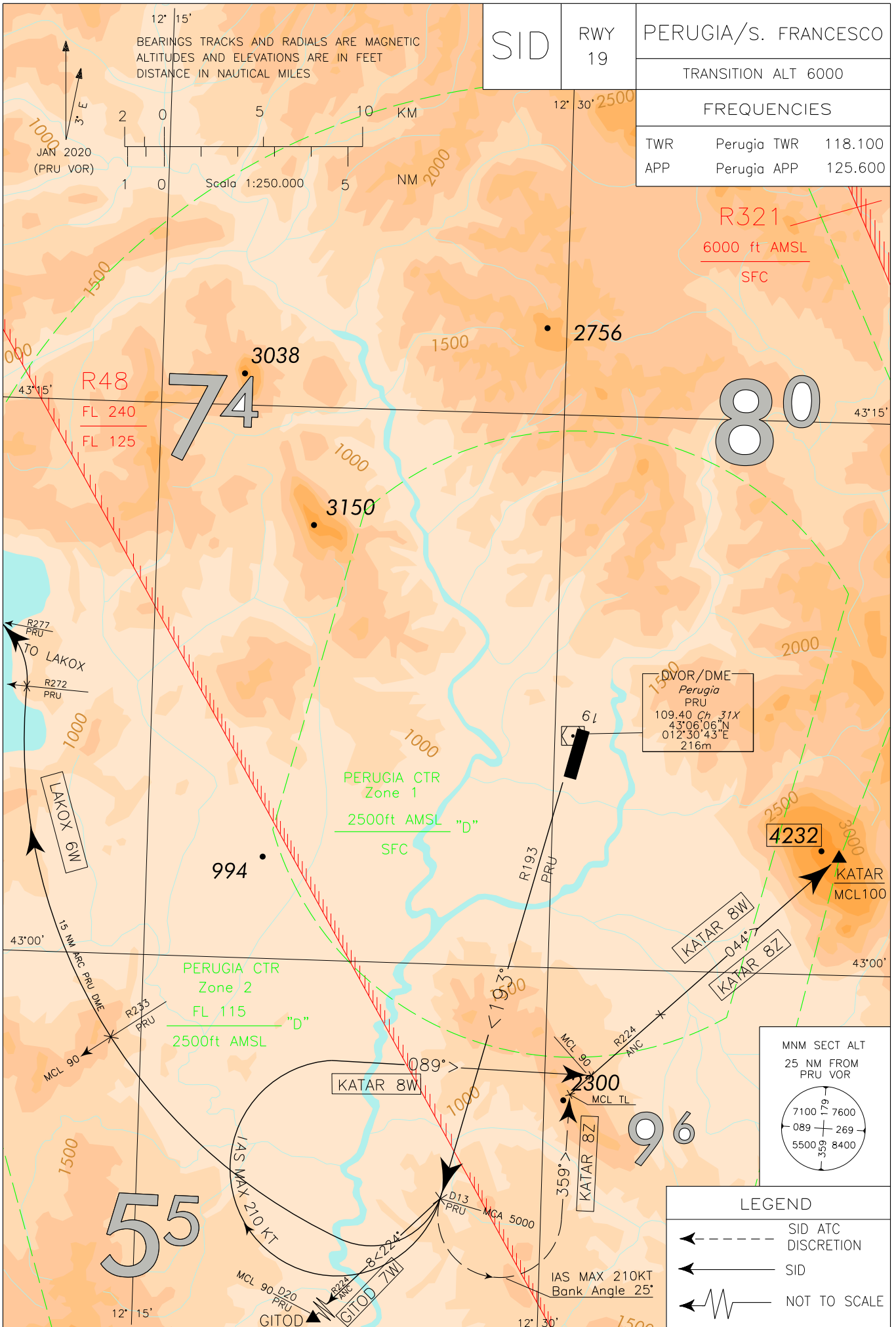
RWY 19

PERUGIA/S. FRANCESCO

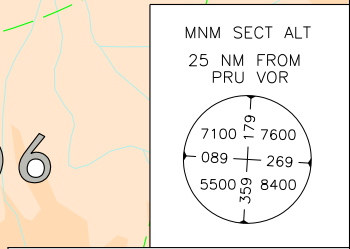
TRANSITION ALT 6000

FREQUENCIES

| | | |
|-----|-------------|---------|
| TWR | Perugia TWR | 118.100 |
| APP | Perugia APP | 125.600 |



CHANGE: MAG VAR UPDATED



LEGEND

- ← - - - - - SID ATC DISCRETION
- ← - - - - - SID
- ← - - - - - NOT TO SCALE

INITIAL CLIMB PROCEDURE

After takeoff turn right until joining RDL193 PRU VOR (TR 193°) until 13NM PRU DME.

MCA: RDL 193/13NM PRU VOR/DME 5000 FT

REMARKS

1. For LAKOX 6W, GITOD 7W, KATAR 8W, Minimum climb gradient: 5.8% (355 ft/NM) until passing 5000 ft;
2. For KATAR 8Z, Minimum climb gradient: 5.8% (355 ft/NM) until passing TRANSITION LEVEL;
3. For LAKOX 6W, KATAR 8W, turn shall be executed with IAS MAX 210KT;
4. For KATAR 8Z turn shall be executed with IAS MAX 210KT and bank angle 25°;

WARNING

There are close-in obstacles penetrating OIS 2.5% but they were not considered for the published procedure design gradient.

SID DESCRIPTION**LAKOX 6W**

At 13NM PRU DME turn right (IAS MAX 210KT during turn) until joining ARC 15NM PRU DME. Crossing RDL 272 PRU VOR turn left until joining RDL 277 PRU VOR (TR 277°) bound to LAKOX.

MCL: INT 15NM ARC PRU DME/RDL 233 PRU VOR FL 90

GITOD 7W

At 13NM PRU DME turn right until joining RDL 224 ANC VOR/DME (TR 224°) bound to GITOD.

MCL: GITOD FL 90

KATAR 8W

At 13NM PRU DME turn right (IAS MAX 210KT during turn) on TR 089° until joining RDL 224 ANC VOR/DME (TR 044°) bound to KATAR.

MCA/MCL: INT TR 089°/RDL 224 ANC VOR/DME, FL90; KATAR FL 100

KATAR 8Z (ATC discretion)

At 13NM PRU DME turn left (IAS MAX 210KT during turn – bank angle 25°) on TR 359° until joining RDL 224 ANC VOR/DME (TR 044°) bound to KATAR.

MCA/MCL: INT TR 359°/RDL 224 ANC VOR/DME, TL; KATAR FL 100

Intenzionalmente bianca

Intentionally left blank

SID

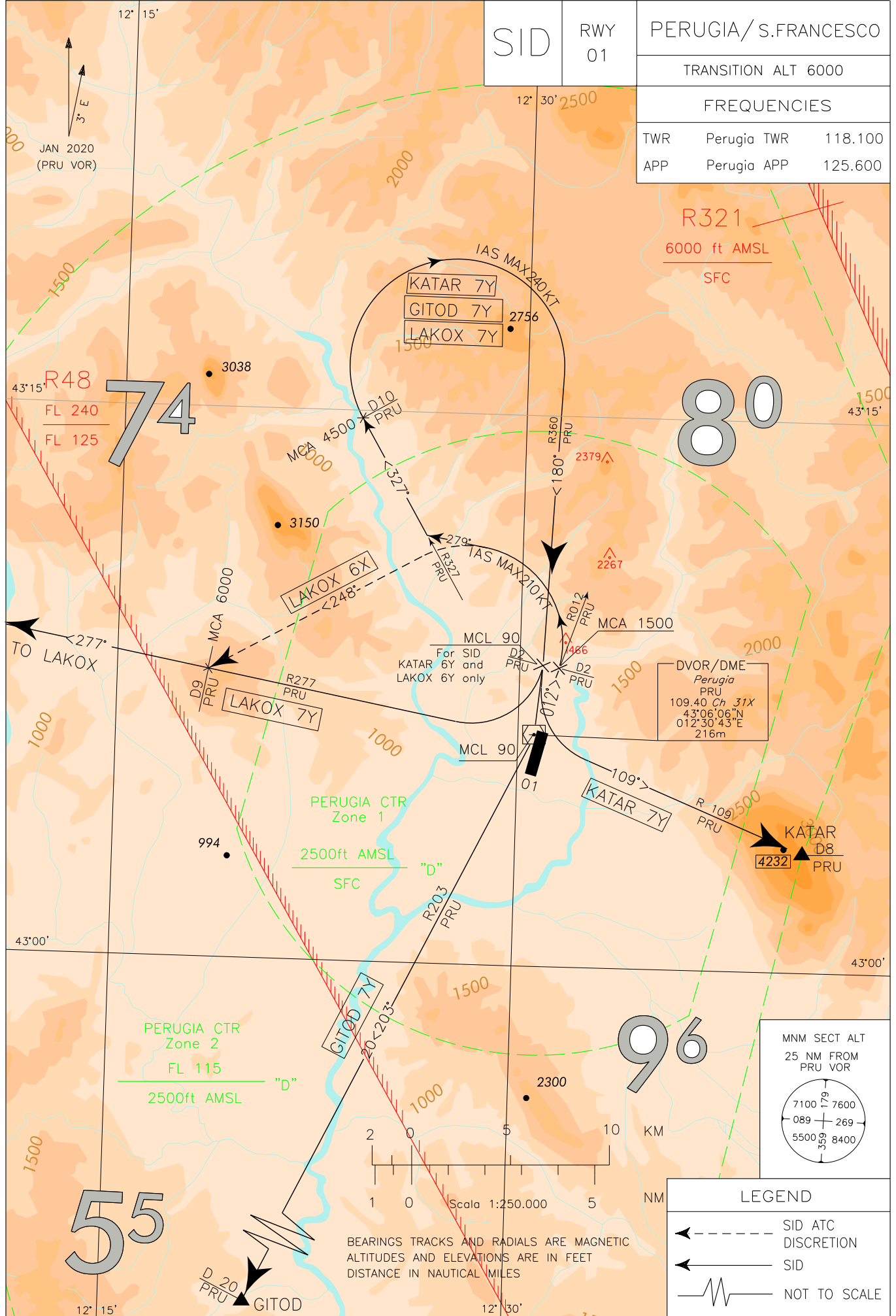
RWY 01

PERUGIA/S.FRANCESCO

TRANSITION ALT 6000

FREQUENCIES

| | | |
|-----|-------------|---------|
| TWR | Perugia TWR | 118.100 |
| APP | Perugia APP | 125.600 |



CHANGE: MAG VAR UPDATED

INITIAL CLIMB PROCEDURE

After take-off turn left until joining RDL012 PRU VOR (TR 012°) until 2NM PRU DME.

MCA: RDL 012/2NM PRU VOR/DME 1500 FT

REMARK

Minimum climb gradient: 8,3% (505 ft/NM) until passing 1500 ft.

SID DESCRIPTION**LAKOX 7Y**

At 2NM PRU DME turn left (IAS MAX 210KT during turn) on TR 279° until joining RDL 327 PRU VOR (TR 327°). At 10NM PRU DME (IAS MAX 240 Kt) turn right until joining RDL 360 PRU VOR (TR 180°), then at 2NM PRU DME turn right until joining RDL 277 PRU VOR (TR 277°) bound to LAKOX.

MCA/MCL: RDL 327/10NM PRU VOR/DME 4500 FT; RDL 360/2NM PRU VOR/DME FL 90

REMARK

Minimum climb gradient: 7% (425 ft/NM) until passing 6000 ft.

LAKOX 6X (ATC discretion)

At 2NM PRU DME turn left (IAS MAX 210KT during turn) on TR 248° until joining RDL 277 PRU VOR (TR 277°) bound to LAKOX.

MCA/MCL: RDL 277/9NM PRU VOR/DME 6000 FT; LAKOX: FL 90

REMARK

Minimum climb gradient: 8,3% (505 ft/NM) until passing 6000 ft.

GITOD 7Y

At 2NM PRU DME turn left (IAS MAX 210KT during turn) on TR 279° until joining RDL 327 PRU VOR (TR 327°). At 10NM PRU DME (IAS MAX 240 Kt) turn right until joining RDL 360 PRU VOR (TR 180°) bound to PRU VOR. Leave PRU VOR on RDL 203 (TR 203°) bound to GITOD.

MCA/MCL: RDL 327/10NM PRU VORDME 4500 FT; PRU VOR/DME FL 90

REMARK

Minimum climb gradient: 7% (425 ft/NM) until passing 6000 ft.

KATAR 7Y

At 2NM PRU DME turn left (IAS MAX 210KT during turn) on TR 279° until joining RDL 327 PRU VOR (TR 327°). At 10NM PRU DME (IAS MAX 240 Kt) turn right until joining RDL 360 PRU VOR (TR 180°), then at 2NM PRU DME turn left until joining RDL 109 PRU VOR (TR 109°) bound to KATAR.

MCA/MCL: RDL 327/10NM PRU VOR/DME 4500 FT; RDL 327/2NM PRU VOR/DME FL 90

REMARK

Minimum climb gradient: 7% (425 ft/NM) until passing 6000 ft.

Intenzionalmente bianca

Intentionally left blank

SID RWY
RNP1 01

PERUGIA/S.FRANCESCO

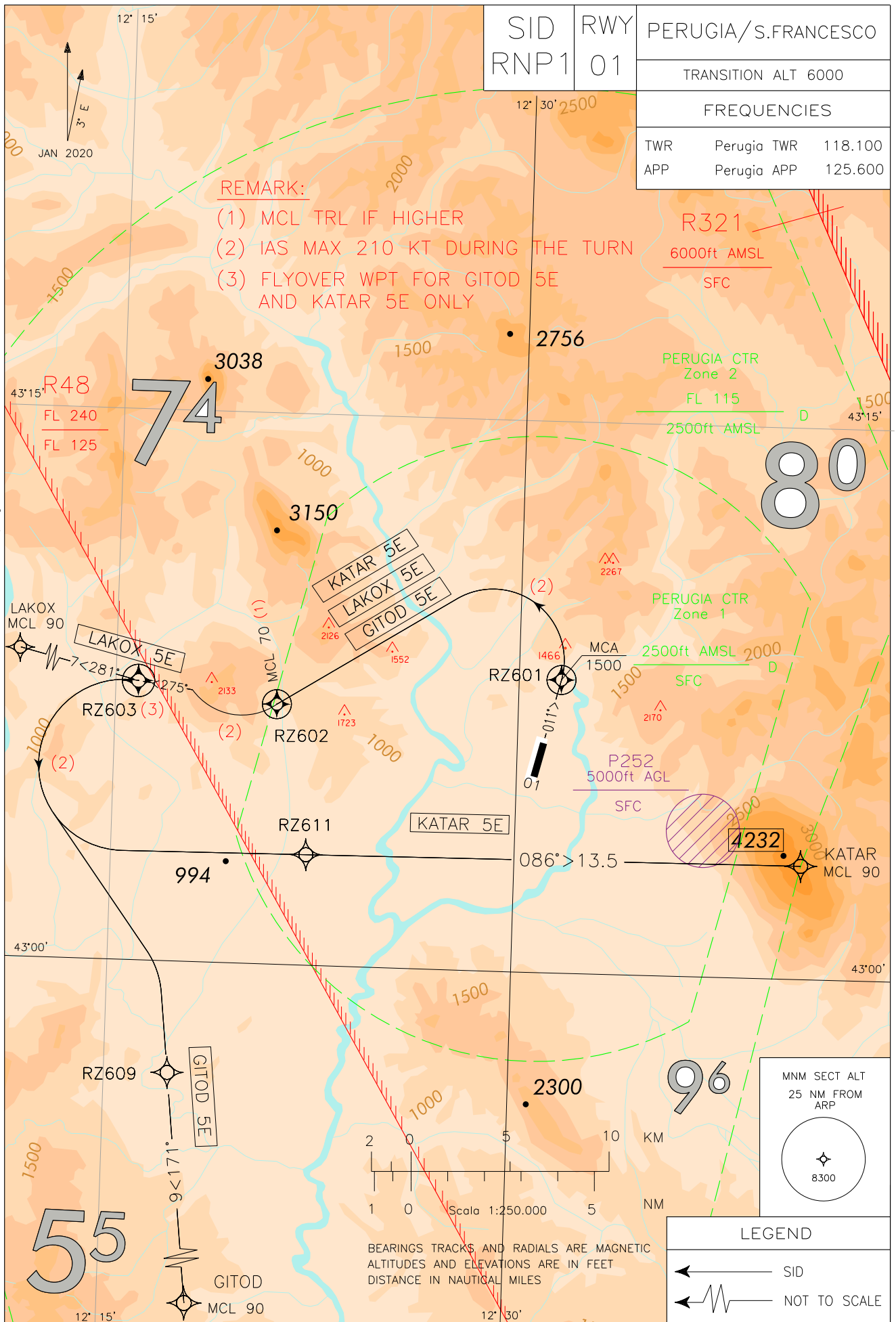
TRANSITION ALT 6000

FREQUENCIES

| | | |
|-----|-------------|---------|
| TWR | Perugia TWR | 118.100 |
| APP | Perugia APP | 125.600 |

REMARK:

- (1) MCL TRL IF HIGHER
- (2) IAS MAX 210 KT DURING THE TURN
- (3) FLYOVER WPT FOR GITOD 5E AND KATAR 5E ONLY



CHANGE: renumbered page

PERUGIA / S. Francesco

SID RNP1 RWY 01

REMARK

Minimum climb gradient: 8,5% (516 ft/NM) until passing FL 70 or TRL if higher.

WARNING:

There are close-in obstacles penetrating OIS 2.5% but they were not considered for the published procedure design gradient.

SID DESCRIPTION

GITOD 5E

| Path Terminator | Waypoint Identifier | Fly Over | Course °M (°T) | Magnetic Variation | Distance (NM) | Turn Direction | Altitude (ft) | Speed Limit (kt) | Navigation Specification |
|-----------------|---------------------|----------|----------------|--------------------|---------------|----------------|-----------------------|------------------|--------------------------|
| CA | - | - | 011 (014.3) | - | - | - | +1110 | -210 | RNP 1 |
| CF | RZ601 | Y | 011 (014.3) | +3.4 | - | - | +1500 | -210 | RNP 1 |
| DF | RZ602 | Y | - | - | - | L | +FL 70 ⁽¹⁾ | -210 | RNP 1 |
| CF | RZ603 | Y | 275 (277.9) | +3.4 | - | - | - | -210 | RNP 1 |
| TF | RZ609 | - | 171 (174.0) | - | 10.7 | L | - | -210 | RNP 1 |
| TF | GITOD | - | 171 (174.0) | - | 9.0 | - | + FL 90 | - | RNP 1 |

KATAR 5E

| Path Terminator | Waypoint Identifier | Fly Over | Course °M (°T) | Magnetic Variation | Distance (NM) | Turn Direction | Altitude (ft) | Speed Limit (kt) | Navigation Specification |
|-----------------|---------------------|----------|----------------|--------------------|---------------|----------------|-----------------------|------------------|--------------------------|
| CA | - | - | 011 (014.3) | - | - | - | +1110 | -210 | RNP 1 |
| CF | RZ601 | Y | 011 (014.3) | +3.4 | - | - | +1500 | -210 | RNP 1 |
| DF | RZ602 | Y | - | - | - | L | +FL 70 ⁽¹⁾ | -210 | RNP 1 |
| CF | RZ603 | Y | 275 (277.9) | +3.4 | - | - | - | -210 | RNP 1 |
| DF | RZ611 | - | - | - | - | L | - | -210 | RNP 1 |
| TF | KATAR | - | 086 (089.5) | - | 13.5 | - | + FL 90 | - | RNP 1 |

LAKOX 5E

| Path Terminator | Waypoint Identifier | Fly Over | Course °M (°T) | Magnetic Variation | Distance (NM) | Turn Direction | Altitude (ft) | Speed Limit (kt) | Navigation Specification |
|-----------------|---------------------|----------|----------------|--------------------|---------------|----------------|------------------------|------------------|--------------------------|
| CA | - | - | 011 (014.3) | - | - | - | +1110 | -210 | RNP 1 |
| CF | RZ601 | Y | 011 (014.3) | +3.4 | - | - | +1500 | -210 | RNP 1 |
| DF | RZ602 | Y | - | - | - | L | + FL 70 ⁽¹⁾ | -210 | RNP 1 |
| CF | RZ603 | - | 275 (277.9) | +3.4 | - | - | - | -210 | RNP 1 |
| TF | LAKOX | - | 281 (284.1) | - | 7.0 | - | +FL 90 | - | RNP 1 |

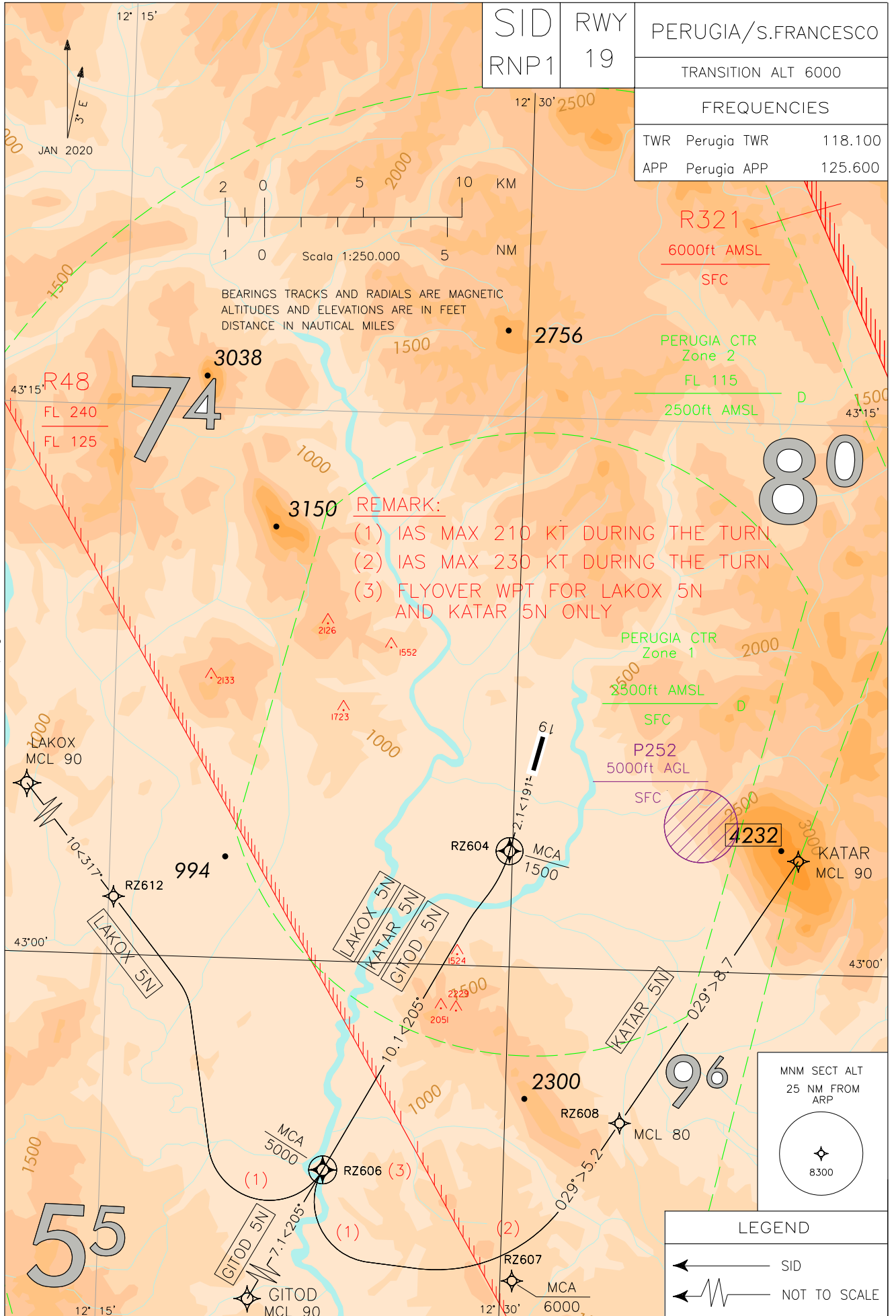
(1) Transition level if higher

WAYPOINT LIST

| Waypoint Identifier | Coordinates |
|---------------------|-----------------------------------|
| RZ601 | 43° 08' 00.06"N 012° 31' 34.60" E |
| RZ602 | 43° 07' 06.32"N 012° 21' 00.48" E |
| RZ603 | 43° 07' 37.79"N 012° 15' 49.88" E |
| RZ609 | 42° 56' 58.43"N 012° 17' 21.75" E |
| RZ611 | 43° 03' 01.58"N 012° 22' 15.67" E |

Intenzionalmente bianca

Intentionally left blank



CHANGE: renumbered page

PERUGIA / S. Francesco

SID RNP 1 RWY 19

REMARK

Minimum climb gradient:

- 1) 6,5% (395 ft/NM) until passing 5000 ft for LAKOX 5N and KATAR 5N.
- 2) 7.5% (455 ft/NM) until passing FL 90 for GITOD 5N.

WARNING:

There are close-in obstacles penetrating OIS 2.5% but they were not considered for the published procedure design gradient.

SID DESCRIPTION

LAKOX 5N

| Path Terminator | Waypoint Identifier | Fly Over | Course °M (°T) | Magnetic Variation | Distance (NM) | Turn Direction | Altitude (ft) | Speed Limit (kt) | Navigation Specification |
|-----------------|---------------------|----------|----------------|--------------------|---------------|----------------|---------------|------------------|--------------------------|
| CA | - | - | 191 (194.3) | - | - | - | +1080 | -210 | RNP 1 |
| CF | RZ604 | Y | 191 (194.3) | +3.4 | - | - | +1500 | -210 | RNP 1 |
| CF | RZ606 | Y | 205 (208.7) | +3.4 | - | - | +5000 | -210 | RNP 1 |
| TF | RZ612 | - | 317 (320.8) | - | 9.4 | R | - | -210 | RNP 1 |
| TF | LAKOX | - | 317 (320.8) | - | 10 | - | + FL 90 | - | RNP 1 |

GITOD 5N

| Path Terminator | Waypoint Identifier | Fly Over | Course °M (°T) | Magnetic Variation | Distance (NM) | Turn Direction | Altitude (ft) | Speed Limit (kt) | Navigation Specification |
|-----------------|---------------------|----------|----------------|--------------------|---------------|----------------|---------------|------------------|--------------------------|
| CA | - | - | 191 (194.3) | - | - | - | +1080 | -210 | RNP 1 |
| CF | RZ604 | Y | 191 (194.3) | +3.4 | - | - | +1500 | -210 | RNP 1 |
| CF | RZ606 | - | 205 (208.7) | +3.4 | - | - | +5000 | -210 | RNP 1 |
| TF | GITOD | - | 205 (208.6) | - | 7.1 | - | +FL 90 | - | RNP 1 |

KATAR 5N

| Path Terminator | Waypoint Identifier | Fly Over | Course °M (°T) | Magnetic Variation | Distance (NM) | Turn Direction | Altitude (ft) | Speed Limit (kt) | Navigation Specification |
|-----------------|---------------------|----------|----------------|--------------------|---------------|----------------|---------------|------------------|--------------------------|
| CA | - | - | 191 (194.3) | - | - | - | +1080 | -210 | RNP 1 |
| CF | RZ604 | Y | 191 (194.3) | +3.4 | - | - | +1500 | -210 | RNP 1 |
| CF | RZ606 | Y | 205 (208.7) | +3.4 | - | - | +5000 | -210 | RNP 1 |
| DF | RZ607 | - | - | - | - | L | +6000 | -210 | RNP 1 |
| TF | RZ608 | - | 029 (032.7) | - | 5.2 | - | +FL 80 | -230 | RNP 1 |
| TF | KATAR | - | 029 (032.7) | - | 8.7 | - | +FL 90 | - | RNP 1 |

WAYPOINT LIST

| Waypoint Identifier | Coordinates |
|---------------------|-----------------------------------|
| RZ604 | 43° 03' 09.87"N 012° 29' 53.46" E |
| RZ606 | 42° 54' 17.75"N 012° 23' 17.38" E |
| RZ607 | 42° 51' 25.04"N 012° 30' 27.03" E |
| RZ608 | 42° 55' 48.74"N 012° 34' 17.11" E |
| RZ612 | 43° 01' 35.67"N 012° 15' 10.71" E |

Intenzionalmente bianca

Intentionally left blank