

ICAO - INSTRUMENT APPROACH CHART

AD 2 LIRZ 5-3

DOC 8168 ED 5 - 2006 - AMDT. 4

WARNING:
The area where the procedure is developed could be interested by not marked OBST. Information on OBST lights are not complete.

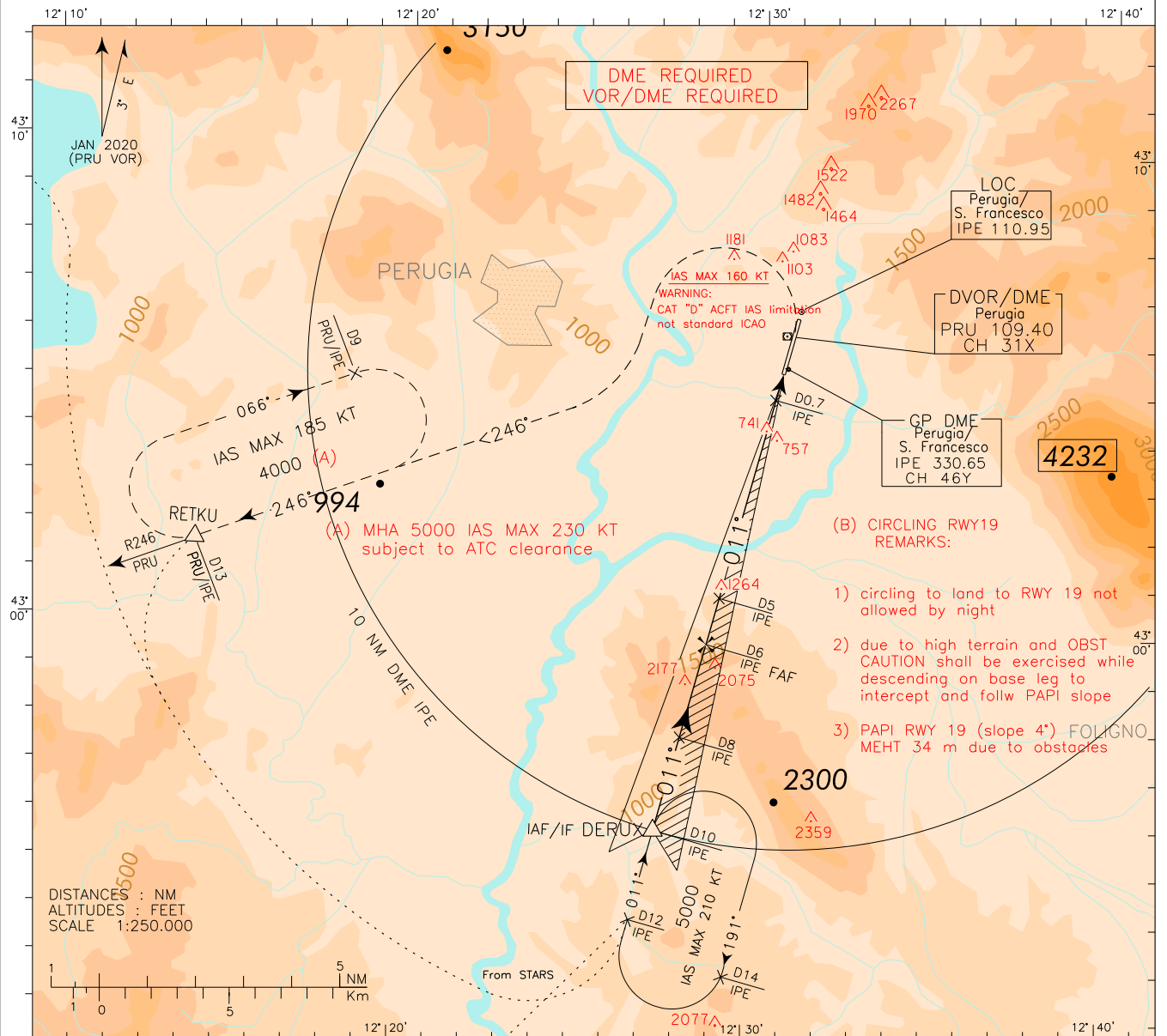
APP Perugia APP 125.600
TWR Perugia TWR 118.100

AD ELEV 697

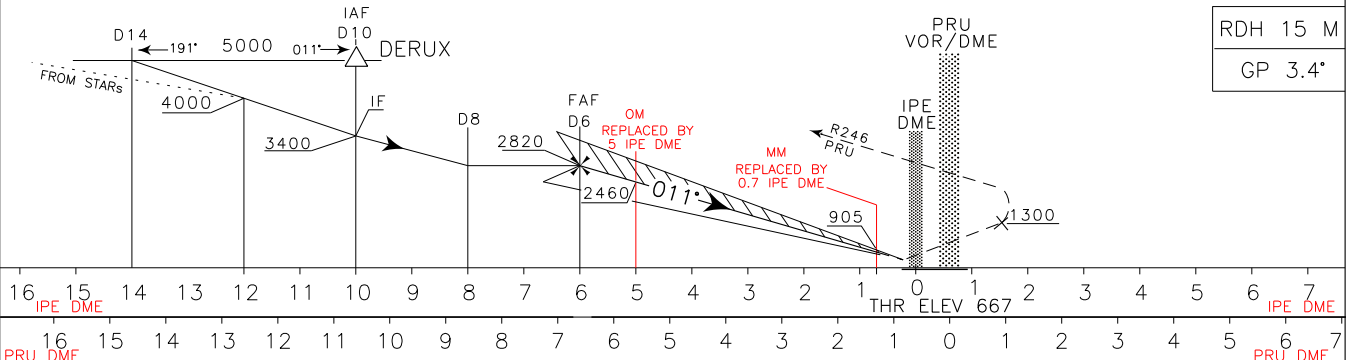
LIRZ

PERUGIA/S. FRANCESCO
ILS Z RWY 01

CHANGE: MAG VAR UPDATED



TRANSITION ALT 6000 MISSED APPROACH: Climb to 4000 ft on TR 011°; passing 1300 ft turn left (IAS MAX 160 kt) to join RDL 246 PRU VOR bound to RETKU. Hold between 13 NM and 9 NM PRU (IPE) DME, IAS MAX 185 kt, right turn (holding away from the station).



OCA (OCH)		A	B	C	D	CIRCLING SECTORS	FT PER GS		OM-MM	MM-THR	ALT (HGT)	MNM SECT ALT				
STRAIGHT IN APPROACH	ILS	M. A. MNM CLIMB GRADIENT 2.5%	M. A. MNM CLIMB GRADIENT 5%	4.3 NM	0.5 NM		PER	GS	IPE DME	PRU		SECT	ALT	VOR		
CIRCLING (B)	ILS	M. A. MNM CLIMB GRADIENT 2.5%	933(266)	944(277)	955(288)	967(300)		960	160	1:37	0:12	6	2820 (2153)	7100	179	7600
		M. A. MNM CLIMB GRADIENT 5%	1201(534)	1213(546)	1224(557)	1235(568)		840	140	1:51	0:13	5	2460 (1793)	089	269	8400
CIRCLING (B)	ILS	M. A. MNM CLIMB GRADIENT 2.5%	933(266)	944(277)	955(288)	967(300)	720	120	2:09	0:16	4	2100 (1433)	5500	359	8400	
		M. A. MNM CLIMB GRADIENT 5%	1550(853)	1950(1253)	2450(1753)	2750(2053)	600	100	2:35	0:19	3	1735 (1068)				
CIRCLING (B)	ILS	M. A. MNM CLIMB GRADIENT 2.5%	933(266)	944(277)	955(288)	967(300)	480	80	3:14	0:23	1	1015 (348)				
		M. A. MNM CLIMB GRADIENT 5%	1550(853)	1950(1253)	2450(1753)	2750(2053)										

AMDT. 4

DOC 8168 ED 5 – 2006

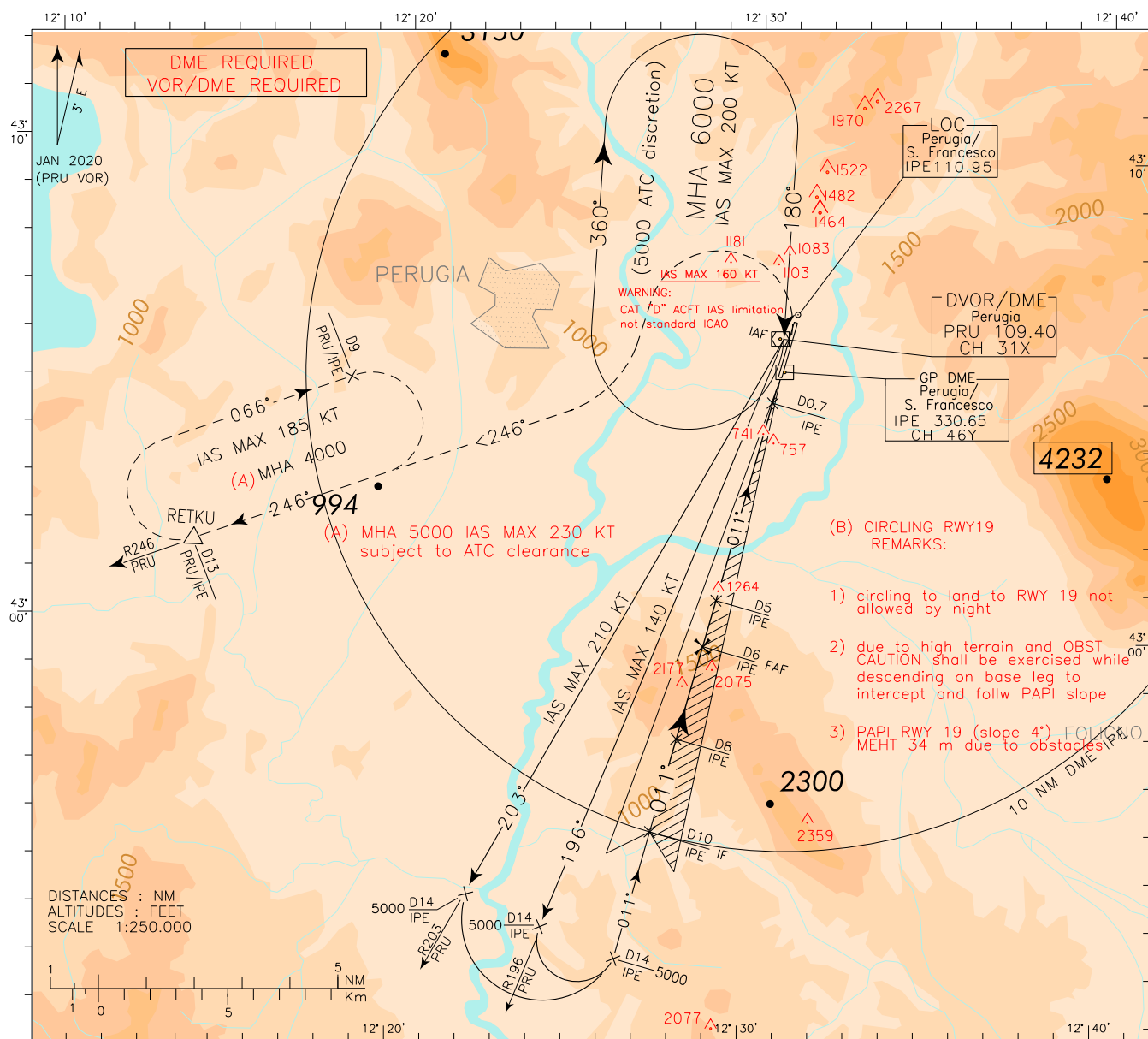
CHANGE: MAG VAR UPDATED

WARNING:
The area where the procedure is developed could be interested by not marked OBST. Information on OBST lights are not complete.

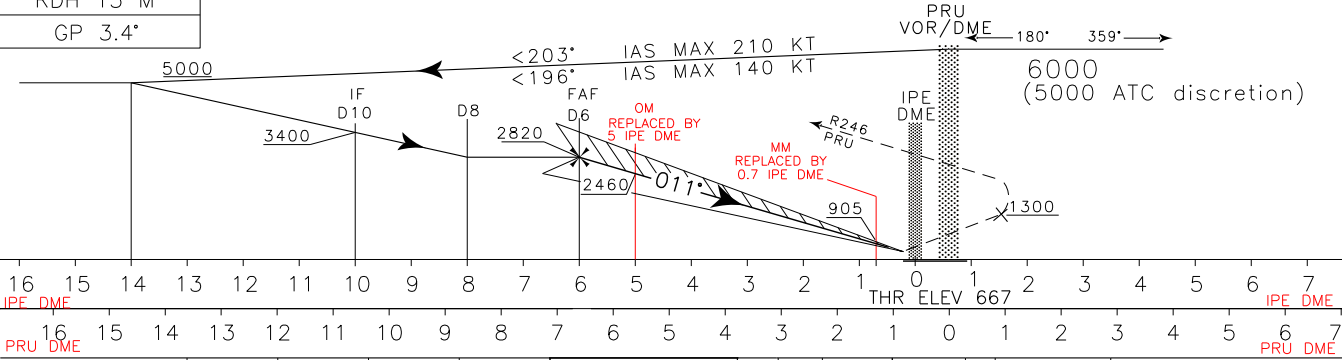
APP Perugia APP 125.600
TWR Perugia TWR 118.100

AD ELEV 697

LIRZ
PERUGIA/S. FRANCESCO
ILS Y RWY 01



TRANSITION ALT 6000
MISSED APPROACH: Climb to 4000 ft on TR 011; passing 1300 ft turn left (IAS MAX 160 kt) to join RDL 246 PRU VOR bound to RETKU. Hold between 13 NM and 9 NM PRU (IPE) DME, IAS MAX 185 kt, right turn (holding away from the station).

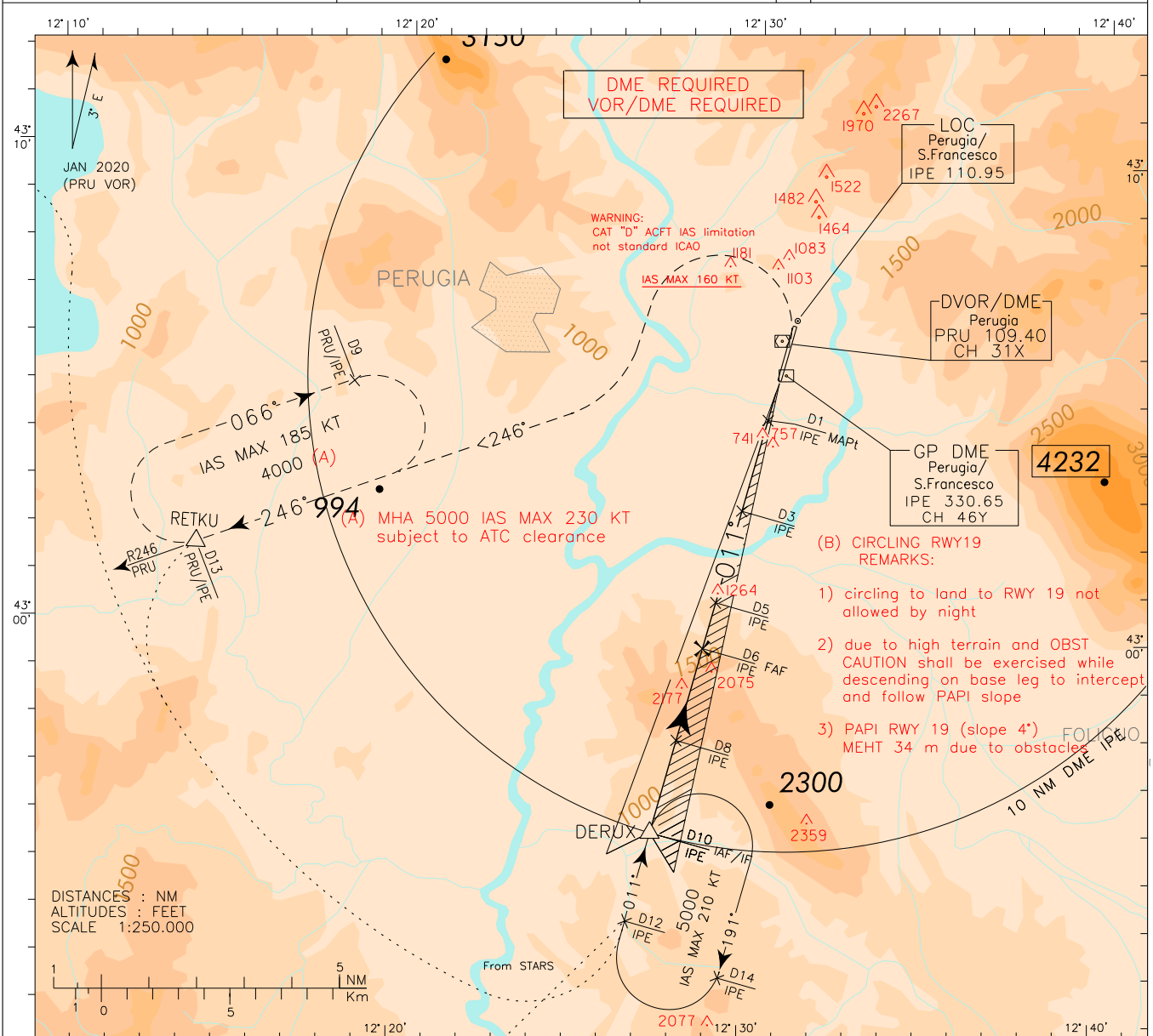


OCA (OCH)		A	B	C	D	CIRCLING SECTORS 	FT PER MIN	GS	OM-MM 4.3 NM	MM-THR 0.5 NM	IPE DME	ALT (HGT)	MNM PRU	SECT VOR	ALT VOR
STRAIGHT IN APPROACH	ILS	M. A. MNM CLIMB GRADIENT 2.5%	M. A. MNM CLIMB GRADIENT 5%												
CIRCLING (B)		1201(534)	1213(546)	1224(557)	1235(568)	6	160	1:37	0:12	6	2820 (2153)	7100	179	7600	
		933(266)	944(277)	955(288)	967(300)	5	140	1:51	0:13	5	2460 (1793)	089	269	8400	
		1550 (853)	1950 (1253)	2450 (1753)	2750 (2053)	4	120	2:09	0:16	4	2100 (1433)	5500	359	8400	
		1550 (853)	1950 (1253)	2450 (1753)	2750 (2053)	3	100	2:35	0:19	3	1735 (1068)				
		1550 (853)	1950 (1253)	2450 (1753)	2750 (2053)	2	80	3:14	0:23	2	1375 (708)				
		1550 (853)	1950 (1253)	2450 (1753)	2750 (2053)	1	80	3:14	0:23	1	1015 (348)				

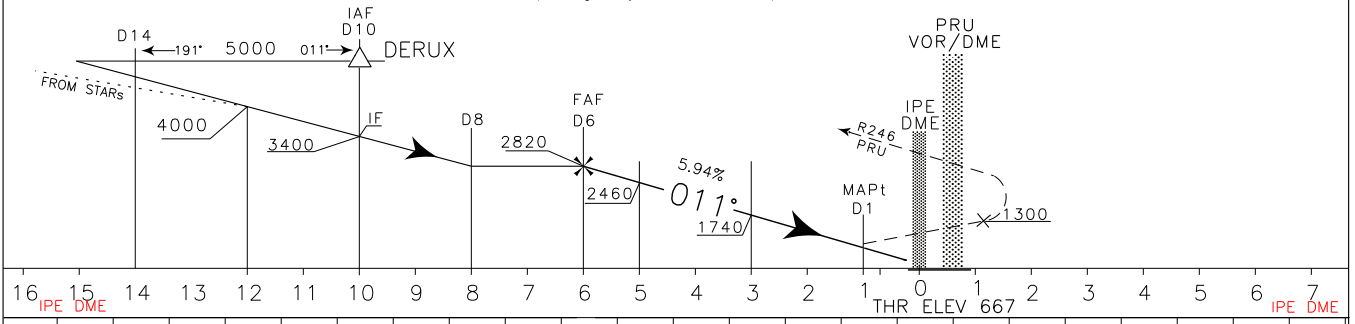
DOC 8168 ED 5 - 2006 - AMDT. 4

CHANGE: MAG VAR UPDATED

WARNING: The area where the procedure is developed could be interested by not marked OBST. Information on OBST lights are not complete.	APP	Perugia APP	125.600	AD ELEV	LIRZ	PERUGIA/S. FRANCESCO LOC Z RWY 01
	TWR	Perugia TWR	118.100	697		

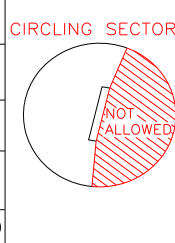


TRANSITION ALT 6000 **MISSED APPROACH:** At 1 NM before IPE DME climb to 4000 ft on TR 011°; passing 1300 ft turn left (IAS MAX 160 kt) to join RDL 246 PRU VOR bound to RETKU. Hold between 13 NM and 9 NM PRU (IPE) DME, IAS MAX 185 kt, right turn (holding away from the station).

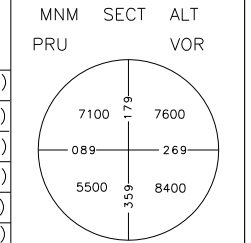


16	15	14	13	12	11	10	9	8	7	6	5	4	3	2	1	0	1	2	3	4	5	6	7
PRU DME																THR ELEV 667							PRU DME

OCA (OCH)		A	B	C	D	
STRAIGHT IN APPROACH	LOC	M. A. MNM CLIMB GRADIENT 2.5%	1270 (603)			
		M. A. MNM CLIMB GRADIENT 5%	1050 (383)			
CIRCLING (B)		1550 (853)	1950 (1253)	2450 (1753)	2750 (2053)	



FT PER MIN	GS	FAF-MAPT		MAPt-THR	IPE DME	ALT (HGT)
		5.0NM	0.8NM			
960	160	1:53	0:18	6	2820 (2153)	
840	140	2:09	0:21	5	2460 (1793)	
720	120	2:30	0:25	4	2100 (1433)	
600	100	3:00	0:30	3	1740 (1073)	
480	80	3:45	0:37	2	1375 (708)	
				1	1015 (348)	



ICAO – INSTRUMENT APPROACH CHART

AD 2 LIRZ 5-23

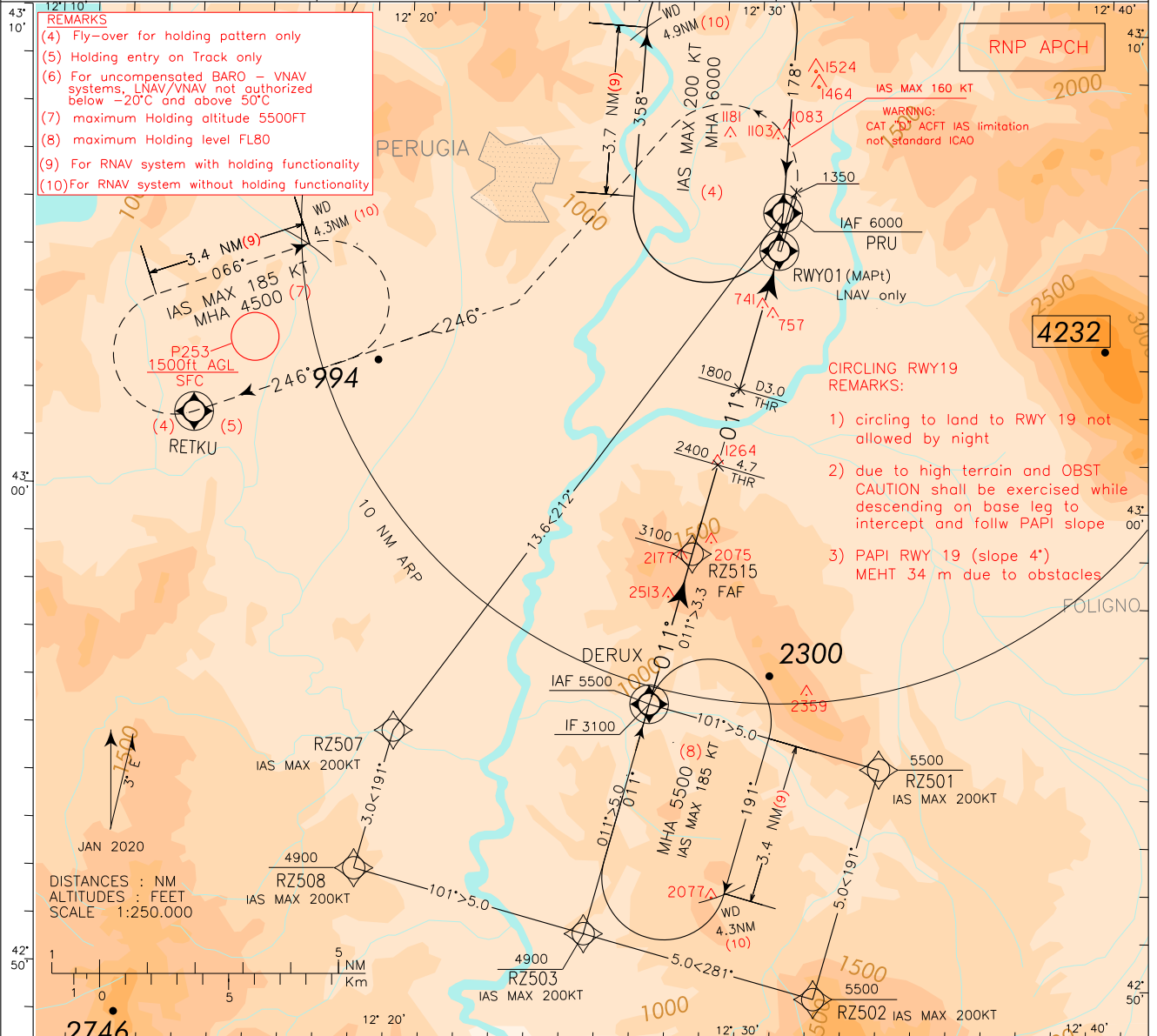
WARNING:

The area where the procedure is developed could be interested by not marked OBST. Information on OBST lights are not complete.

APP Perugia APP 125.600 AD ELEV 697
 TWR Perugia TWR 118.100

LIRZ PERUGIA/S. FRANCESCO
 RNP RWY 01

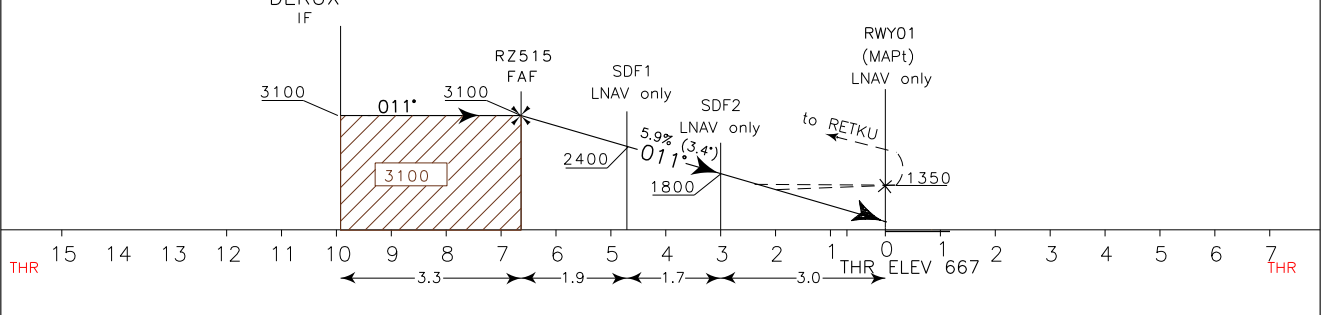
- REMARKS**
- (4) Fly-over for holding pattern only
 - (5) Holding entry on Track only
 - (6) For uncompensated BARO – VNAV systems, LNAV/VNAV not authorized below -20°C and above 50°C
 - (7) maximum Holding altitude 5500FT
 - (8) maximum Holding level FL80
 - (9) For RNAV system with holding functionality
 - (10) For RNAV system without holding functionality



- RNP APCH**
- WARNING:**
 CAT 3 ACFT IAS limitation not standard ICAO
- CIRCLING RWY19**
 REMARKS:
- 1) circling to land to RWY 19 not allowed by night
 - 2) due to high terrain and OBST CAUTION shall be exercised while descending on base leg to intercept and follow PAPI slope
 - 3) PAPI RWY 19 (slope 4°) MEHT 34 m due to obstacles

TRANSITION ALT 6000 MISSED APPROACH: Proceed on TR 011 * climbing to 4500FT. At 1350FT not before THR01 turn left (IAS MAX 160KT) on course 246° to RETKU Holding pattern.

TCH 15 M Remark (11): Missed Approach obstacle clearance is provided by 2.5% gradient, 3.3% gradient is required for ATC reason.



OCA (OCH)		A	B	C	D	CIRCLING SECTORS	FT PER MIN	GS	Distance to RWY 01	ALT (HGT)	MNM SECT ALT
STRAIGHT IN APPROACH											25 NM ARP
STRAIGHT IN APPROACH	LNAV/VNAV	1250(583)	1260(593)	1270(603)	1280(613)		960	160	6	2885 (2218)	
	LNAV	1350(683)					840	140	5	2520 (1853)	
CIRCLING		1550 (853)	1950 (1253)	2450 (1753)	2750 (2053)		720	120	4	2160 (1493)	
							600	100	3	1800 (1133)	
							480	80	2	1440 (773)	

TABULAR DESCRIPTION

RNP RWY 01 – Instrument Approach procedure

Serial Number	Path Terminator	Waypoint Identifier	Fly Over	Course °M (°T)	Magnetic Variation	Distance (NM)	Turn Direction	Altitude (ft)	Speed Limit (kt)	VPA (°)/TCH (ft)	Navigation Specification
010	IF	PRU	-	-	-	-	-	+6000	-	-	RNP APCH
020	TF	RZ507	-	212° (215.3°)	-	13.6	-	-	200	-	RNP APCH
030	TF	RZ508	-	191° (194.2°)	-	3.0	-	+4900	200	-	RNP APCH
040	TF	RZ503	-	101° (104.2°)	-	5.0	L	+4900	200	-	RNP APCH
050	TF	DERUX	-	011° (014.3°)	-	5.0	L	+3100	200	-	RNP APCH
010	IF	DERUX	-	-	-	-	-	+5500	-	-	RNP APCH
020	TF	RZ501	-	101° (104.3°)	-	5.0	-	+5500	200	-	RNP APCH
030	TF	RZ502	-	191° (194.4°)	-	5.0	R	+5500	200	-	RNP APCH
040	TF	RZ503	-	281° (284.4°)	-	5.0	R	+4900	200	-	RNP APCH
050	TF	DERUX	-	011° (014.3°)	-	5.0	R	+3100	200	-	RNP APCH
010	TF	DERUX	-	-	-	-	-	+3100	200	-	RNP APCH
020	TF	RZ515	-	011° (014.3°)	-	3.3	-	+3100	-	-	RNP APCH
030	TF	RWY01	Y	011° (014.4°)	-	6.6	-	@717 (3)	-	-3.4/50	RNP APCH
040	CA	-	-	011° (014.4°)	-	-	-	+1350	160	-	RNP APCH
050	CF	RETKU	-	246° (249.6°)	-	-	L	+4500	160	-	RNP APCH
060	HM	RETKU	Y	246° (249.6°)	-	-	R	+4500	185	-	RNAV 1

Path Terminator	Waypoint Identifier	Inbound Course °M (°T)	Leg Distance (NM) (1)	Timing(min.)/ Waypoint Distance (NM) (2)	Turn Direction	Minimum Altitude (FT)	Maximum Altitude (FL)	Speed Limit (kt)	Magnetic Variation (°)	Navigation Specification
HM	PRU	178° (181°)	3.7	- / 4.9	R	6000	-	200	3.0	RNAV 1
HM	DERUX	011° (014°)	3.4	- / 4.3	R	5500	FL80	185	3.0	RNAV 1
HM	RETKU (4)	246° (249°)	3.4	- / 4.3	R	4500	5500	185	3.0	RNAV 1

- (1) RNAV system with holding functionality;
(2) RNAV system without holding functionality;
(3) THR Altitude plus TCH.
(4) Holding entry on track only

**WAYPOINT LIST
RNP RWY 01**

Waypoint Identifier	Coordinates
RZ501	42° 54' 30.38" N 012° 33' 54.29" E
RZ502	42° 49' 39.71" N 012° 32' 13.09" E
RZ503	42° 50' 53.91" N 012° 25' 38.05" E
RZ507	42° 55' 02.23" N 012° 20' 02.86" E
RZ508	42° 52' 07.73" N 012° 19' 02.76" E
RZ515	42° 58' 54.71" N 012° 28' 24.72" E

Intenzionalmente bianca

Intentionally left blank