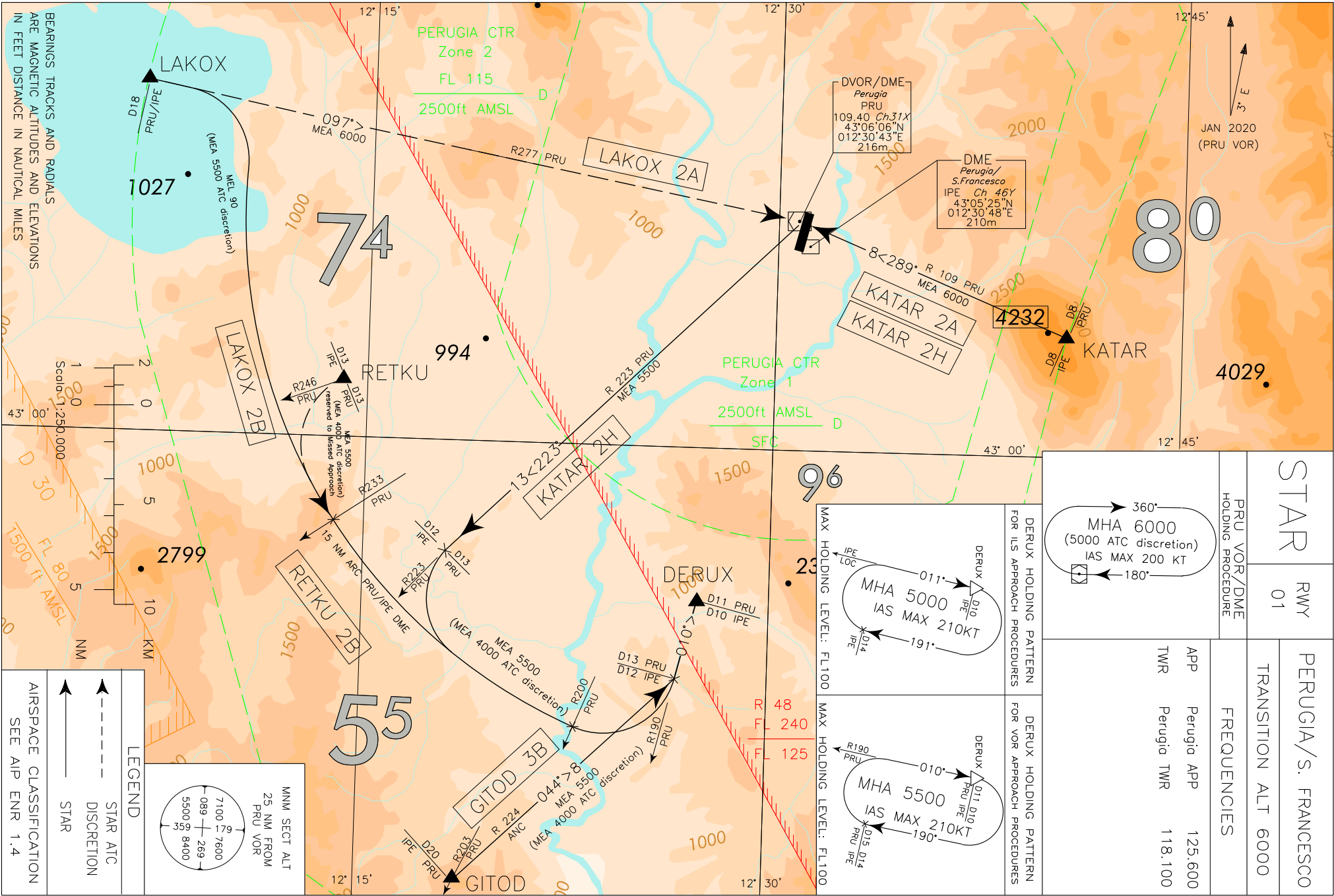
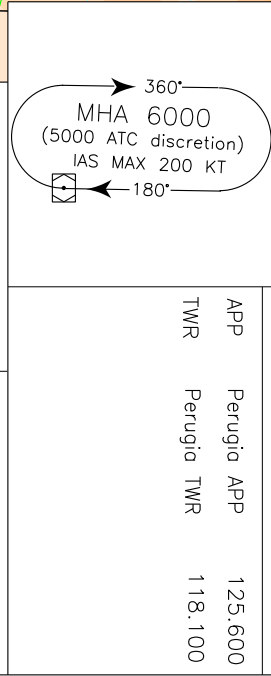


CHANGE: MAG VAR UPDATED



STAR	RWY 01	PERUGIA/S. FRANCESCO
PRU VOR/DME HOLDING PROCEDURE	TRANSITION ALT 6000	FREQUENCIES
<p>MHA 6000 (5000 ATC discretion) IAS MAX 200 KT</p>	APP Perugia APP 125.600	TWR Perugia TWR 118.100



**LEGEND**

- STAR ATC DISCRETION (dashed arrow)
- STAR (solid arrow)

**AIRSPACE CLASSIFICATION**  
SEE AIP ENR 1.4

**MNM SECT ALT 25 NM FROM PRU VOR**

7100	7600
089	269
5500	8400

**LAKOX 2A (ATC discretion)**

LAKOX – TR 097° (RDL 277 PRU VOR) – PRU VOR/DME.

MEA: LAKOX – PRU VOR/DME: 6000 FT

**LAKOX 2B**

After LAKOX turn right until joining ARC 15NM PRU(IPE) DME. Crossing RDL 200 PRU VOR turn left until joining RDL 190 PRU VOR (TR 010°) bound to DERUX.

MEL/MEA: LAKOX – INT ARC 15NM PRU(IPE) DME/RDL 233 PRU VOR: FL 90 (5500 FT at ATC discretion); INT ARC 15NM PRU(IPE) DME/RDL 233 PRU VOR – DERUX: 5500 FT (4000 FT at ATC discretion)

**KATAR 2A**

KATAR – TR 289° (RDL 109 PRU VOR) – PRU VOR/DME.

MEA: KATAR – PRU VOR/DME: 6000 FT

**GITOD 3B**

GITOD – TR 044° (RDL 224 ANC VOR/DME) until joining RDL 190 PRU VOR (TR 010°) bound to DERUX.

MEA: GITOD – DERUX: 5500 FT (4000 FT at ATC discretion)

**RETKU 2B (ATC discretion)**

After RETKU turn left until joining ARC 15NM PRU (IPE) DME. Crossing RDL 200 PRU VOR turn left until joining RDL 190 PRU VOR (TR 010°) bound to DERUX.

**REMARK:** STAR reserved for Missed Approach.

MEA: RETKU – DERUX: 5500 FT (4000 FT at ATC discretion)

**KATAR 2H**

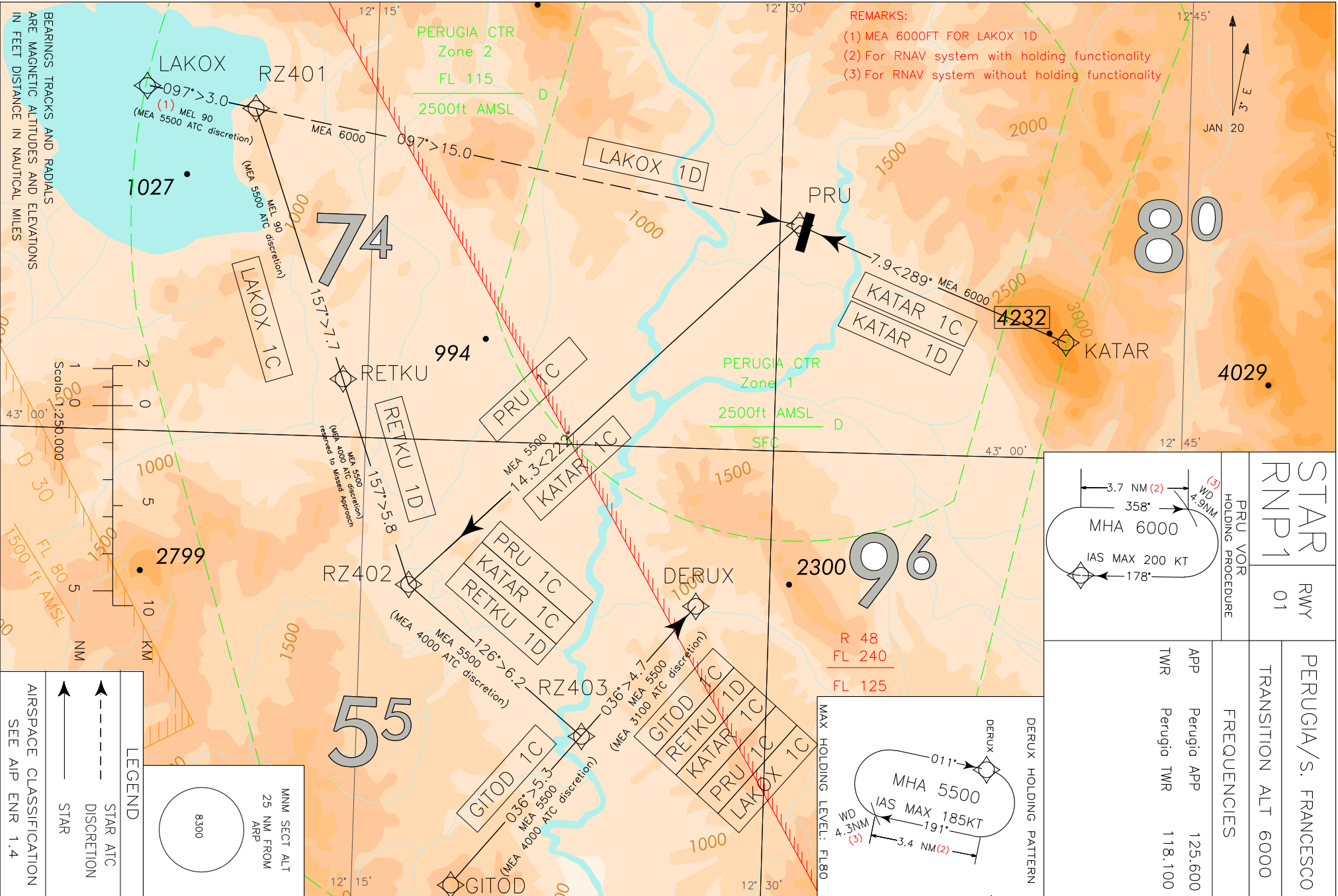
KATAR – TR 289° (RDL 109 PRU VOR) – PRU VOR/DME - TR 223° (RDL 223 PRU VOR). At 13NM PRU DME (12NM IPE DME) turn left until joining ARC 15NM PRU (IPE) DME. Crossing RDL 200 PRU VOR turn left until joining RDL 190 PRU VOR (TR 010°) bound to DERUX.

MEA: KATAR – PRU VOR/DME: 6000 FT; PRU VOR/DME – DERUX: 5500 FT (4000 FT at ATC discretion).

Intenzionalmente bianca

*Intentionally left blank*

CHANGE: ALL HOLDINGS UPDATED - REMARKS UPDATED



STAR RNP1	RWY 01	PERUGIA/S. FRANCESCO
PRU VOR HOLDING PROCEDURE		TRANSITION ALT 6000
<p>MHA 6000 IAS MAX 200 KT 3.7 NM(2) 358° 4.9 NM(3) 178°</p>		
FREQUENCIES		
APP	Perugia APP	125.600
TWR	Perugia TWR	118.100

LEGEND

- STAR ATC DISCRETION
- STAR

AIRSPACE CLASSIFICATION SEE AIP ENR 1.4

MMM SECT ALT 25 NM FROM ARP

8300

ENAV - Roma

AIRAC effective date 11 AUG 2022 (A7/22)

**STAR RNP 1 Perugia S.Egidio****LAKOX 1C**

Path Terminator	Waypoint Identifier	Fly Over	Course °M(°T)	Magnetic Variation	Distance (NM)	Turn Direction	Altitude (ft)	Speed Limit (kt)	Navigation Specification
IF	LAKOX	-	-	-	-	-	+FL90 (3)	250	RNP1
TF	RZ401	-	097 (100.3)	-	3.0	-	+FL90 (3)	250	RNP1
TF	RETKU	-	157 (160.3)	-	7.7	-	+FL90 (3)	250	RNP1
TF	RZ402	-	157 (160.3)	-	5.8	-	+5500 (4)	250	RNP1
TF	RZ403	-	126 (129.5)	-	6.2	-	+5500 (4)	210	RNP1
TF	DERUX	-	036 (039.6)	-	4.7	L	+5500 (5)	185	RNP1

**LAKOX 1D (ATC Discretion)**

Path Terminator	Waypoint Identifier	Fly Over	Course °M(°T)	Magnetic Variation	Distance (NM)	Turn Direction	Altitude (ft)	Speed Limit (kt)	Navigation Specification
IF	LAKOX	-	-	-	-	-	+6000	250	RNP1
TF	PRU	-	097 (100.2)	-	18.0	-	+6000	250	RNP1

**GITOD 1C**

Path Terminator	Waypoint Identifier	Fly Over	Course °M(°T)	Magnetic Variation	Distance (NM)	Turn Direction	Altitude (ft)	Speed Limit (kt)	Navigation Specification
IF	GITOD	-	-	-	-	-	+5500 (4)	250	RNP1
TF	RZ403	-	036 (039.6)	-	5.3	-	+5500 (4)	210	RNP1
TF	DERUX	-	036 (039.6)	-	4.7	-	+5500 (5)	185	RNP1

**KATAR 1D**

Path Terminator	Waypoint Identifier	Fly Over	Course °M(°T)	Magnetic Variation	Distance (NM)	Turn Direction	Altitude (ft)	Speed Limit (kt)	Navigation Specification
IF	KATAR	-	-	-	-	-	+6000	250	RNP1
TF	PRU	-	289 (292.4)	-	7.9	-	+6000	250	RNP1

**KATAR 1C**

Path Terminator	Waypoint Identifier	Fly Over	Course °M(°T)	Magnetic Variation	Distance (NM)	Turn Direction	Altitude (ft)	Speed Limit (kt)	Navigation Specification
IF	KATAR	-	-	-	-	-	+6000	250	RNP1
TF	PRU	-	289 (292.4)	-	7.9	-	+6000	250	RNP1
TF	RZ402	-	222 (225.8)	-	14.3	-	+5500	210	RNP1
TF	RZ403	-	126 (129.5)	-	6.2	-	+5500 (4)	210	RNP1
TF	DERUX	-	036 (039.6)	-	4.7	L	+5500 (5)	185	RNP1

**PRU 1C**

Path Terminator	Waypoint Identifier	Fly Over	Course °M(°T)	Magnetic Variation	Distance (NM)	Turn Direction	Altitude (ft)	Speed Limit (kt)	Navigation Specification
IF	PRU	-	-	-	-	-	+6000	250	RNP1
TF	RZ402	-	222 (225.8)	-	14.3	-	+5500	210	RNP1
TF	RZ403	-	126 (129.5)	-	6.2	-	+5500 (4)	210	RNP1
TF	DERUX	-	036 (039.6)	-	4.7	L	+5500 (5)	185	RNP1

**RETKU 1D (ATC Discretion)**

Path Terminator	Waypoint Identifier	Fly Over	Course °M(°T)	Magnetic Variation	Distance (NM)	Turn Direction	Altitude (ft)	Speed Limit (kt)	Navigation Specification
IF	RETKU	-	-	-	-	-	+5500 (4)	210	RNP1
TF	RZ402	-	157 (160.4)	-	5.8	-	+5500 (4)	210	RNP1
TF	RZ403	-	126 (129.5)	-	6.2	-	+5500 (4)	210	RNP1
TF	DERUX	-	036 (039.6)	-	4.7	L	+5500 (5)	185	RNP1

**Holding RNAV**

Path Terminator	Waypoint Identifier	Inbound Course °M (°T)	Leg Distance (NM) (1)	Timing(min.)/ Waypoint Distance (NM) (2)	Turn Direction	Minimum Altitude (FT)	Maximum Altitude (FL)	Speed Limit (kt)	Magnetic Variation (°)	Navigation Specification
HM	PRU	178 (181)	3.7	-/4.9	R	+6000	-	200	3	RNAV1
HM	DERUX	011 (014)	3.4	-/4.3	R	+5500	FL80	185	3	RNAV1

**REMARK**

- (1) RNAV system with holding functionality
- (2) RNAV system without holding functionality
- (3) MEA 5500FT ATC Discretion
- (4) MEA 4000FT ATC Discretion
- (5) MEA 3100FT ATC Discretion

**WAYPOINT LIST**

Waypoint Identifier	Coordinates
RZ401	43° 08' 47.9" N 012° 10' 33.5" E
RZ402	42° 56' 05.5" N 012° 16' 44.7" E
RZ403	42° 52' 08.5" N 012° 23' 15.7" E

Intenzionalmente bianca

*Intentionally left blank*