

FIS	Roma Information	125.750
APP	Grosseto Approach	124.525
TWR	Grosseto Tower	128.105

AD ELEV

20

LIRS

# GROSSETO

CHANGE: AD ELEV UPDATED



AIRSPACE CLASSIFICATION (See AIP-Italia ENR 1.4)

- ① TMA ROMA Zone 1: FL 85 / FL 125 "A"
- ② TMA ROMA Zone 2: 5000ft AMSL / FL 125 "A"
- ③ Aerobatic training area See ENR 5.5.2.3-1
- ④ Parachuting area See ENR 5.5.1-1

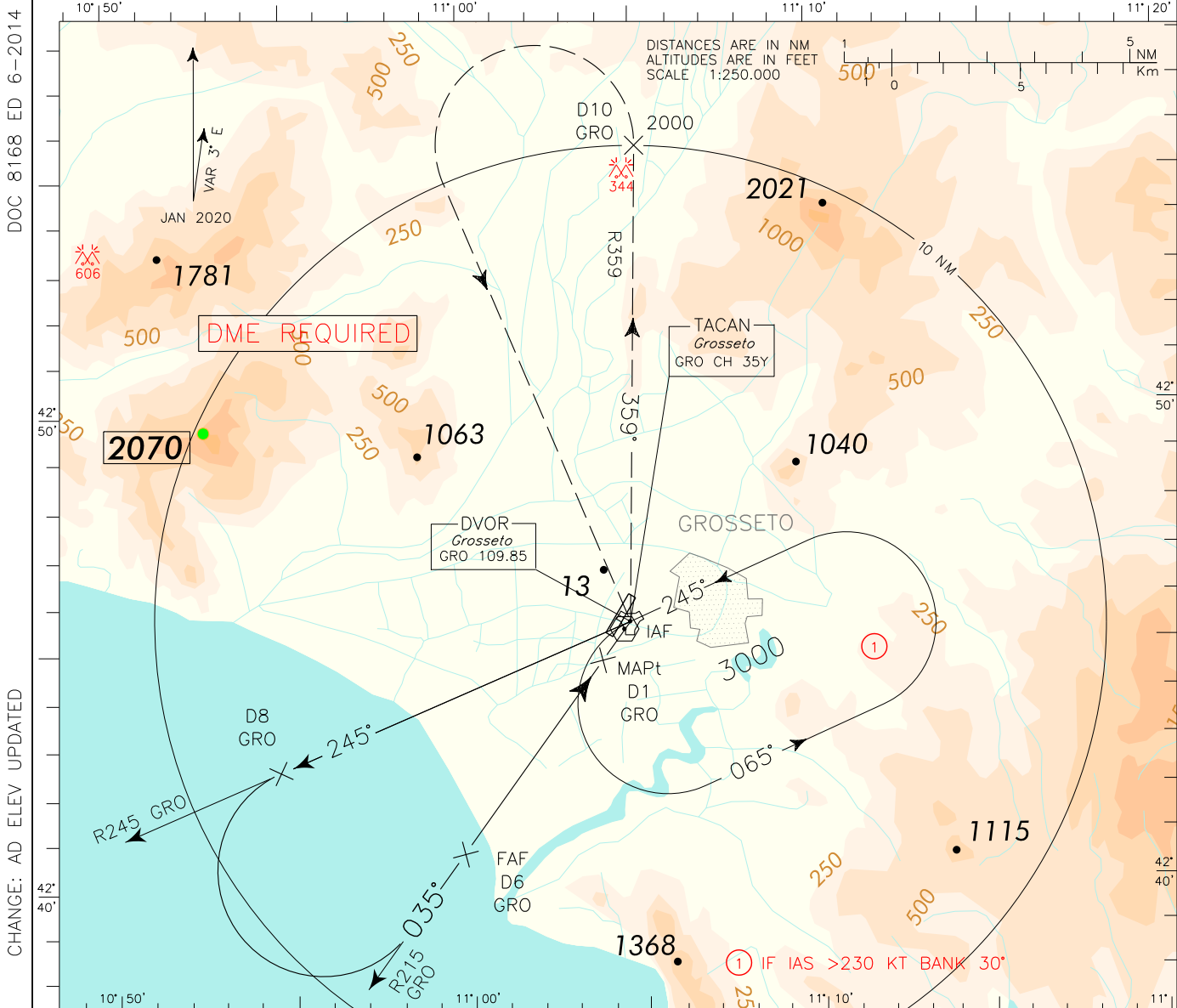
TRANSITION ALT 6000

Bearings are magnetic.  
ELEV and ALT in ft.

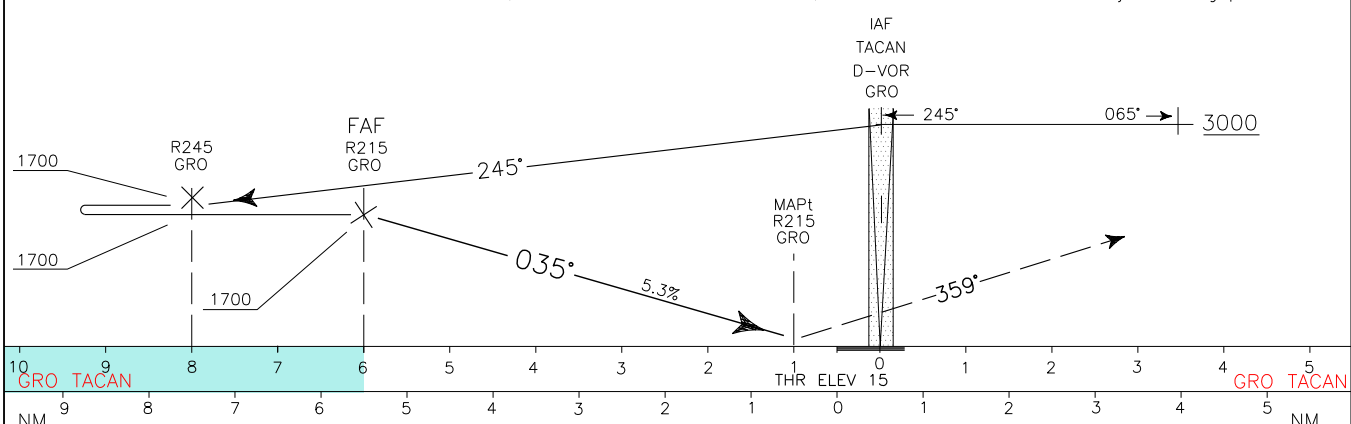
# ICAO – INSTRUMENT APPROACH CHART

AD 2 LIRS 5-3

<b>WARNING: Seagulls concentration</b> 2500 m before THR 03L, 600 m left side.	APP	Grosseto APP/RADAR	124.525	AD ELEV	20	LIRS	GROSSETO VOR RWY 03L
	TWR	Grosseto TWR	128.105 124.525				



TRANSITION ALT 6000 MISSED APPROACH: At 1NM to GRO VOR/TACAN, turn left on TR 359° (RDL 359 GRO VOR), climbing to 3000 ft. Crossing 2000 ft, not further than 10NM DME GRO, turn left bound to GRO VOR to join holding pattern



OCA (OCH)		A	B	C	D	② CIRCLING SECTOR	FT PER MIN	GS	DIST GRO DME	ALT (HGT)	MNM SECT ALT GRO
STRAIGHT IN APPROACH	VOR 03L	520 (510)						320	60	6	1700 (1690)
						480		90	5	1380 (1370)	
						640		120	4	1080 (1050)	
						800		150	3	740 (730)	
CIRCLING ②		520 (510)		720 (710)	1550 (1540)	960	180	2.3	520 (510)		



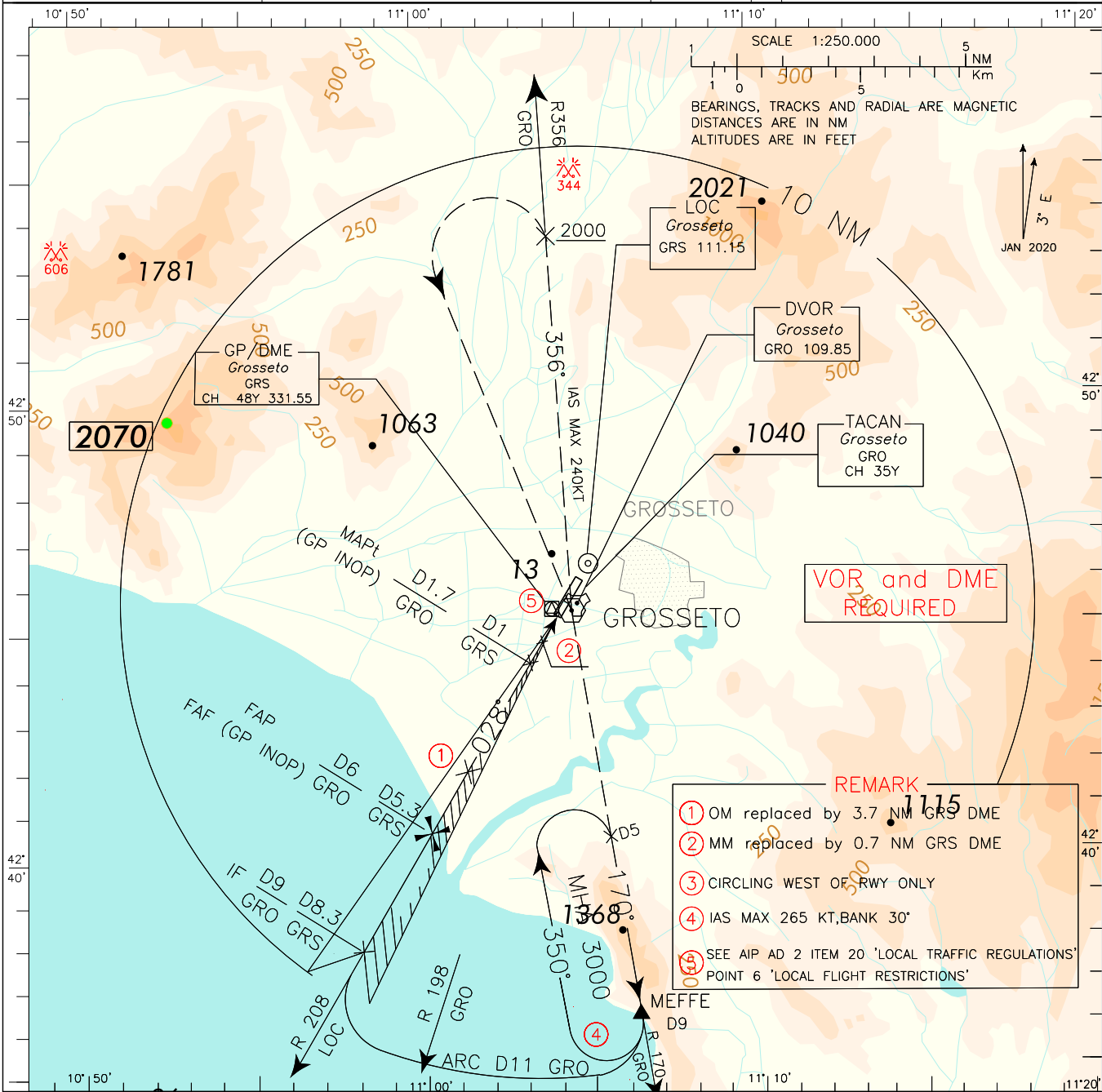
ICAO - INSTRUMENT APPROACH CHART

AD 2 LIRS 5-5

<p><b>WARNING:</b> Seagulls concentration 2500 m before THR 03L 600 m left side.</p>	APP Grosseto APP/Radar	124.525	AD ELEV	LIRS	<p>GROSSETO ILS or LOC-Z RWY 03L</p>
	TWR Grosseto TWR	128.105 124.525	20		

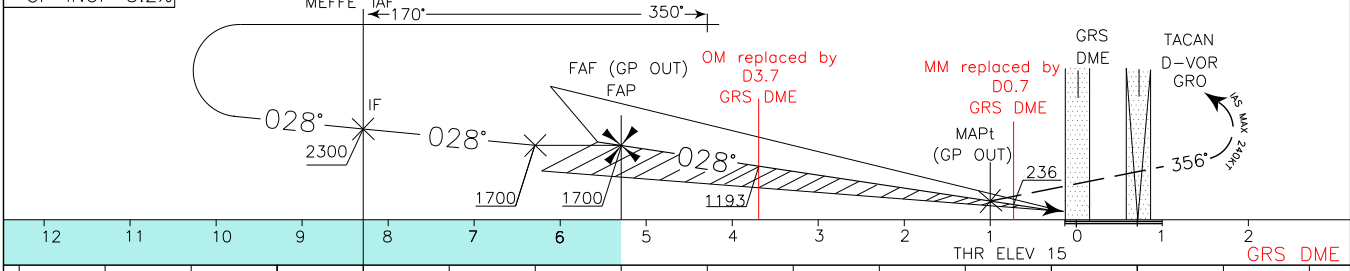
DOC 8168 ED 6-2014

CHANGE: AD ELEV UPDATED



TRANSITION ALT 6000  
 RDH 16,5 M  
 GP 3"  
 GP INOP 5.2%

MISSED APPROACH: As soon as practicable (in any case not before 1 NM GRS DME before THR 03L), turn left (IAS MAX 240KT) to join RDL 356 GRO VOR (TR-356°), climbing to 3000 ft. Passing 2000 ft, not further than 10 DME, turn left bound to GRO VOR. Then proceed on R-170° GRO (TR-170°) to MEFTE holding fix. Hold between D5 and D9 GRO DME, inbound TR-170°, right turn, IAS MAX 265 KT and Bank Angle 30°.



STRAIGHT IN APPROACH	OCA (OCH)	A	B	C	D	CIRCLING SECTOR 	GS	FT PER MIN	GRS DME	ALT (HGT)	MNM SECT ALT VOR GRO
	ILS CAT 1	355 (340)		365 (350)	375 (360)						
CIRCLING ③	GP INOP	400 (385)					120	630	4	1288 (1273)	
		520 (510)		720 (710)	1550 (1540)		150	790	3	970 (955)	
							180	950	2	651 (636)	
							210	1110	1	332 (317)	