

CHANGE: MSA UPDATED

PIS 1B

PIS L – TR 143° (QDR 143° PIS L/RDL 323 GRO VOR) per GRO VOR.

PIS 1B

PIS L – TR 143° (QDR 143° PIS L/RDL 323 GRO VOR) bound to GRO VOR.

MEA: PIS L - RDL 323 GRO VOR/5 NM GRO TACAN: 5000 ft; RDL 323 GRO VOR/5 NM GRO TACAN- GRO VOR: 3000 ft

Remark

When R70 is active MEA/MEL: PIS L INT RDL 323 GRO VOR/RDL 046 ELB VOR: FL 110; INT RDL 323 GRO VOR/RDL 046 ELB VOR – RDL 323 GRO VOR/5 NM GRO TACAN: 5000 ft; RDL 323 GRO VOR/5 NM GRO TACAN – GRO VOR: 3000 ft

LOMED 1B

LOMED – TR 175° (RDL 355 GRO VOR) per GRO VOR.

LOMED 1B

LOMED – TR 175° (RDL 355 GRO VOR) bound to GRO VOR.

MEA/MEL: LOMED – RDL 355 GRO VOR/29NM GRO TACAN: FL 150; RDL 355 GRO VOR/29NM GRO TACAN – RDL 355 GRO VOR/20NM GRO TACAN: FL 90; RDL 355 GRO VOR/20NM GRO TACAN – RDL 355 GRO VOR/5NM GRO TACAN: 5000 ft; RDL 355 GRO VOR/5NM GRO TACAN – GRO VOR: 3000 ft

GIKIN 3B

GIKIN – TR 278° (RDL 098 GRO VOR) per GRO VOR.

GIKIN 3B

GIKIN – TR 278° (RDL 098 GRO VOR) bound to GRO VOR.

MEA/MEL: GIKIN – RDL 098 GRO VOR/10NM GRO TACAN: FL90; RDL 098 GRO VOR/10NM GRO TACAN – GRO VOR: 3000 ft

BAMVU 1B

BAMVU – TR 013° (RDL 193 GRO VOR) per GRO VOR.

BAMVU 1B

BAMVU – TR 013° (RDL 193 GRO VOR) bound to GRO VOR.

MEA: BAMVU – RDL 193 GRO VOR/5NM GRO TACAN: 4000 ft; RDL 193 GRO VOR/5NM GRO TACAN – GRO VOR: 3000 ft

UPADU 1B

UPADU – TR 084° (RDL 264 GRO VOR) per GRO VOR.

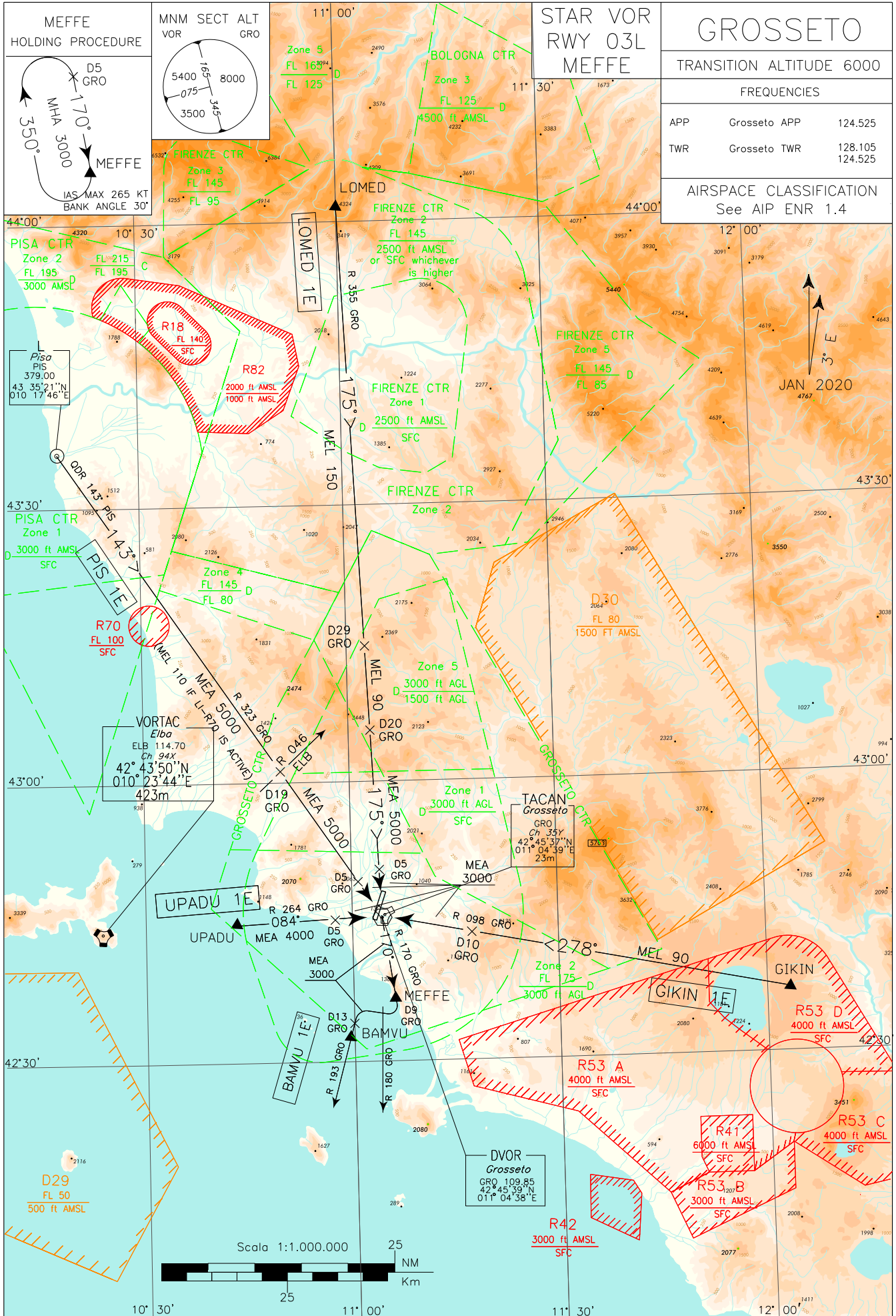
UPADU 1B

UPADU – TR 084° (RDL 264 GRO VOR) bound to GRO VOR.

MEA: UPADU – RDL 264 GRO VOR/5NM GRO TACAN: 4000 ft; RDL 264 GRO VOR/5NM GRO TACAN – GRO VOR: 3000 ft

Intenzionalmente bianca

Intentionally left blank



CHANGE: MSA UPDATED

PIS 1E

PIS L – TR 143° (QDR 143° PIS L or RDL 323 GRO VOR) per GRO VOR – TR 170° (RDL 170 GRO VOR) per il punto MEFFE.

PIS 1E

PIS L – TR 143° (QDR 143° PIS L or RDL 323 GRO VOR) bound to GRO VOR – TR 170° (RDL 170 GRO VOR) bound to MEFFE.

MEA: PIS L - RDL 323 GRO VOR/5 NM GRO TACAN: 5000 ft; RDL 323 GRO VOR/5 NM GRO TACAN – MEFFE: 3000 ft;

Remark

When R70 is active MEA/MEL: PIS L - RDL 323 GRO VOR/19 NM GRO TACAN or INT RDL 323 GRO VOR/RDL 046 ELB VOR: FL 110; RDL 323 GRO VOR/19 NM GRO TACAN or INT RDL 323 GRO VOR/RDL 046 ELB VOR – RDL 323 GRO VOR/5 NM GRO TACAN: 5000 ft; RDL 323 GRO VOR/5 NM GRO TACAN – MEFFE: 3000 ft

LOMED 1E

LOMED – TR 175° (RDL 355 GRO VOR) per GRO VOR – TR 170° (RDL 170 GRO VOR) per il punto MEFFE.

LOMED 1E

LOMED – TR 175°(RDL 355 GRO VOR) bound to GRO VOR – TR 170° (RDL 170 GRO VOR) bound to MEFFE.

MEA/MEL: LOMED – RDL 355 GRO VOR/29NM GRO TACAN: FL 150; RDL 355 GRO VOR/29NM GRO TACAN – RDL 355 GRO VOR/20NM GRO TACAN: FL 90; RDL 355 GRO VOR/20NM GRO TACAN – RDL 355 GRO VOR/5NM GRO TACAN: 5000 ft; RDL 355 GRO VOR/5NM GRO TACAN – MEFFE: 3000 ft

GIKIN 1E

GIKIN – TR 278° (RDL 098 GRO VOR) per GRO VOR – TR 170° (RDL 170 GRO VOR) per il punto MEFFE.

GIKIN 1E

GIKIN – TR 278° (RDL 098 GRO VOR) bound to GRO VOR – TR 170° (RDL 170 GRO VOR) bound to MEFFE.

MEA/MEL: GIKIN – RDL 098 GRO VOR/10NM GRO TACAN: FL90; RDL 098 GRO VOR/10NM GRO TACAN – MEFFE: 3000 ft

BAMVU 1E

BAMVU – TR 013° (RDL 193 GRO VOR) fino a 13 NM GRO TACAN, quindi virare a destra per intercettare e seguire ARC 11 GRO TACAN. Attraversando RDL 180 GRO VOR virare a sinistra fino a intercettare e seguire RDL 170 GRO VOR (TR 350°) per il punto MEFFE.

BAMVU 1E

BAMVU – TR 013° (RDL 193 GRO VOR) until 13 NM GRO TACAN, then turn right to join and follow ARC 11 GRO TACAN. Crossing RDL 180 GRO VOR turn left to join and follow RDL 170 GRO VOR (TR 350°) bound to MEFFE.

MEA: 3000 ft

UPADU 1E

UPADU – TR 084° (RDL 264 GRO VOR) per GRO VOR – TR 170° (RDL 170 GRO VOR) per il punto MEFFE.

UPADU 1E

UPADU – TR 084° (RDL 264 GRO VOR) bound to GRO VOR – TR 170° (RDL 170 GRO VOR) bound to MEFFE.

MEA: UPADU – RDL 264 GRO VOR/5NM GRO TACAN: 4000 ft; RDL 264 GRO VOR/5NM GRO TACAN – MEFFE: 3000 ft

Intenzionalmente bianca

Intentionally left blank