

**WARNING**

Initial climb procedure for take-off RWY 23 is also minimum noise abatement routing. Strict adherence within the limits of aircraft is mandatory.

INITIAL CLIMB PROCEDURE  
RWY 23

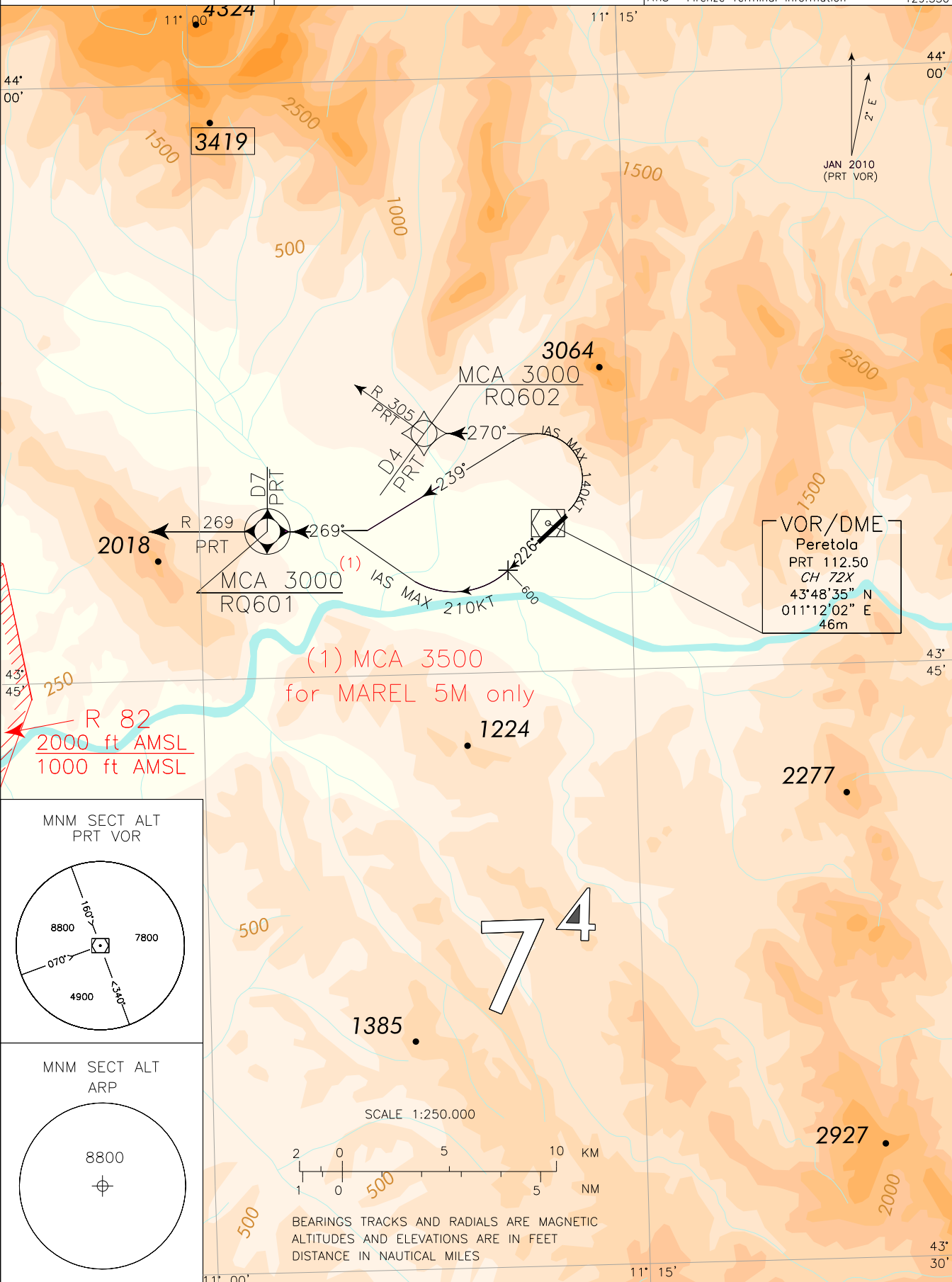
VISUAL INITIAL CLIMB  
RWY 05

**FIRENZE/PERETOLA**

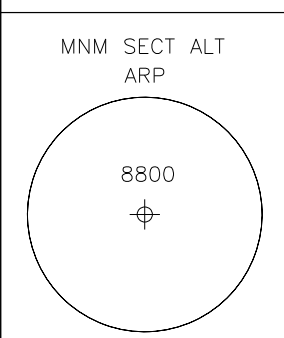
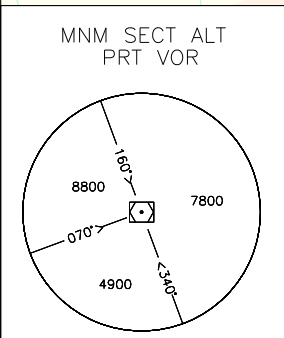
TRANSITION ALT 6.000

FREQUENCIES

TWR	Firenze TWR	118.300
		122.100
APP	Firenze APP/Radar	125.825
ATIS	Firenze Terminal Information	129.350



CHANGE: IAS MAX ICP RWY23 MODIFIED



**PROCEDURA DI SALITA INIZIALE A VISTA RWY 05**

**(Solo per aeromobili civili certificati in accordo all'Annesso 16, Cap. III ICAO e per aeromobili civili dotati di motore convenzionale, muniti di certificazione acustica).**

Le minime meteorologiche applicabili sono (come da bollettino locale):

- visibilità: 5 km;
- base delle nubi uguale o maggiore di 3000 ft.

Durante il decollo e la salita iniziale a vista, i piloti sono responsabili della separazione dagli ostacoli, scegliendo la traiettoria di volo ed il rateo di salita in accordo con quanto prescritto dall'Annesso 6 ICAO.

A causa dell'elevazione del terreno ed ostacoli fino a 2549 ft AMSL situati a Nord ed a Est entro le 3 NM dal punto di riferimento aeroportuale, il decollo e la salita iniziale da RWY 05 dovranno avvenire di giorno, a vista e:

- a) se autorizzati via **SID BALUK 5C/5G**:

appena possibile virare a sinistra su TR 270° fino ad intercettare e seguire RDL 305 PRT VOR.

**NOTE**

1. La virata dovrà essere completamente contenuta entro 3 NM PRT DME.
2. Durante la salita iniziale IAS MAX 140 KT fino al punto RDL 305/4NM PRT VOR/DME (RQ602).
3. Rateo minimo di salita per inserirsi nella SID sul punto RDL 305/4NM PRT VOR/DME (RQ602) a 3000 ft: 462 ft/NM (7,6%).

- b) Se autorizzati per **tutte le altre SIDs**:

appena possibile virare a sinistra su TR 239° fino ad intercettare e seguire RDL 269 PRT VOR.

**NOTE**

1. La virata dovrà essere completamente contenuta entro 3 NM PRT DME.
2. Durante la salita iniziale IAS MAX 140 KT fino a stabilizzarsi sulla RDL 269 PRT VOR.
3. Rateo minimo di salita: 431 ft/NM (7,1%).
4. MCA sul punto RDL 269/7NM PRT VOR/DME (RQ601): 3000 ft (3500ft solo per la MAREL 5M).

**PROCEDURE ANTIRUMORE DI SALITA INIZIALE RWY 23**

Disposizione DCA N° 057/24.25 del 10.01.2002, Disposizione ENAC SRS/160005 del 08.01.2002, Autorizzazione ENAC del 13.09.2018 (rif. Commissione Aeroportuale del 03.07.2018)

**PROCEDURA DI SALITA INIZIALE E ROTTA ANTIRUMORE**

Dopo il decollo mantenere TR 226°. Attraversando 600 ft virare a destra immediatamente fino ad intercettare e seguire RDL 269 PRT VOR (TR 269°).

**NOTE**

1. E' **obbligatorio** attenersi strettamente alla procedura entro i limiti delle caratteristiche degli aeromobili.
2. **Gradiente minimo di salita: 431 ft/NM (7.1%).**
3. Durante la salita iniziale IAS MAX 210 KT.
4. Solo gli aeromobili equipaggiati in accordo alla specifica di navigazione RNP1 possono usare la codifica riportata nella tabella sottostante.
5. MCA sul punto RDL 269/7NM PRT VOR/DME (RQ601): 3000 ft (3500ft solo per la MAREL 5M).

**VISUAL INITIAL CLIMB PROCEDURE RWY 05**

**(Only for civil aircraft certified according to ICAO Annex 16, Cap. III and for piston engines civil aircraft, provided with noise certification).**

Following aerodrome meteorological minima (as reported on local bulletin) shall be applied:

- visibility: 5 km;
- base of cloud equal or higher than 3000 ft.

During take off and initial climb pilots are responsible to provide own separation from obstacles and to choose the routeing and climb gradient according to ICAO Annex 6 prescriptions.

Due to ground elevation and obstacles up to 2549 ft AMSL sited N and E within 3 NM from aerodrome reference point, take off and initial climb from RWY 05 must be performed during daylight only and under visual conditions as follows:

- a) if cleared via **SID BALUK 5C/5G**:

as soon as possible turn left on TR 270° until intercepting and following RDL 305 PRT VOR.

**REMARKS**

1. Turn must be completely performed within 3 NM PRT DME.
2. During initial climb IAS MAX 140 KT until point RDL 305/4NM PRT VOR/DME (RQ602).
3. Minimum climb gradient to join point RDL 305/4NM PRT VOR/DME (RQ602) at 3000 ft: 462 ft/NM (7,6%).

- b) If cleared via **all other SIDs**:

as soon as possible turn left on TR 239° until intercepting and following RDL 269 PRT VOR.

**REMARKS**

1. Turn must be completely performed within 3 NM PRT DME.
2. During initial climb IAS MAX 140 KT until establishing on RDL 269 PRT VOR.
3. Minimum climb gradient: 431 ft/NM (7,1%).
4. MCA at RDL 269/7NM PRT VOR/DME (RQ601): 3000ft (3500ft only for MAREL 5M).

**NOISE ABATEMENT INITIAL CLIMB PROCEDURES RWY 23**

Provision N° 057/24.25 dated 10.01.2002 of Aerodrome Civil Aviation Authority (DCA), provision SRS/160005 dated 08.01.2002 of Civil Aviation Authority (ENAC), Authorization of Civil Aviation Authority (ENAC) dated 13.09.2018 (ref. Airport Commission dated 03.07.2018)

**INITIAL CLIMB PROCEDURE AND NOISE ABATEMENT ROUTING**

After take-off maintain TR 226°. Passing 600 ft turn right immediately to intercept and follow RDL 269 PRT VOR (TR 269°).

**REMARKS**

1. **Strict adherence within the limits of aircraft performance is mandatory.**
2. **Minimum climb gradient: 431 ft/NM (7.1%).**
3. During initial climb IAS MAX 210 KT.
4. Only the aircraft equipped according to RNP1 specification may use the suggested coding reported below.
5. MCA at RDL 269/7NM PRT VOR/DME (RQ601): 3000ft (3500ft only for MAREL 5M).

Path Terminator	WPT Name	Fly Over	Track °Mag	Turn Direction	Altitude Constraint (MCA/MCL)	Speed Limit	Recommended Navaid	Bearing/ Range to Navaid	Navigation Performance
CA	-	-	226°	-	+600 FT	-210	-	-	Conventional/ RNP1
CF	RQ601	Y	269°	-	+3000 FT*	-	PRT VOR/DME	-	Conventional/ RNP1

\* 3500FT for SID MAREL 5M

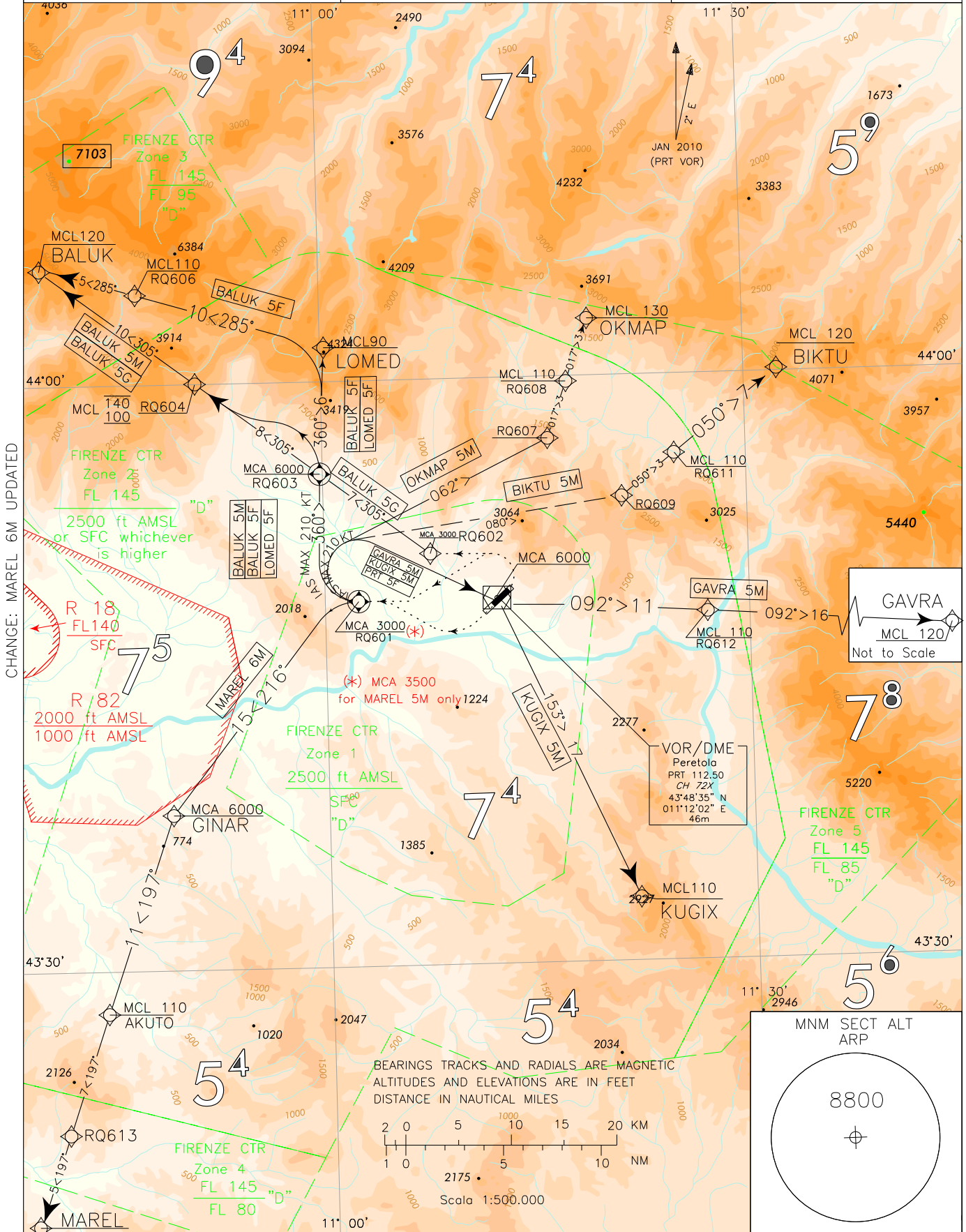
**Waypoints Table formatted according ARINC 424 standards**

Waypoint	Latitude	Longitude
RQ601	N43484218	E011022336

LEGEND	
Initial Climb	.....→
SID	————→
SID ATC discretion	- - - - -→
Not to Scale	⚡→

SID RNAV  
RWY 05/23

FIRENZE/PERETOLA		
TRANSITION ALT 6.000		
FREQUENCIES		
APP	Firenze APP/Radar	125.825
TWR	Firenze TWR	118.300 122.100
ATIS	Firenze Terminal Information	129.350



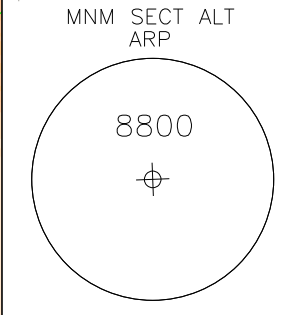
CHANGE: MAREL 6M UPDATED

GAVRA  
MCL 120  
Not to Scale

BEARINGS TRACKS AND RADIALS ARE MAGNETIC  
ALTITUDES AND ELEVATIONS ARE IN FEET  
DISTANCE IN NAUTICAL MILES

2 0 5 10 15 20 KM  
1 0 5 10 NM

2175  
Scala 1:500.000



**SID RNAV RWY05/23****GENERAL REMARKS**

1. BALUK 5G only with Initial Climb RWY05.
2. If cleared via BALUK 5G, minimum climb gradient: 462 ft/NM (7,6%) until reaching FL100.
3. If cleared via LOMED 5F/ OKMAP 5M/ PRT 5F, minimum climb gradient: 431 ft/NM (7,1%).
4. If cleared via BALUK 5F/ BALUK 5M/ BIKTU 5M/ GAVRA 5M, minimum climb gradient: 431 ft/NM (7,1%) until reaching FL100.
5. If cleared via KUGIX 5M/ MAREL 6M, minimum climb gradient: 431 ft/NM (7,1%) until reaching 6000FT.

**SID DESCRIPTION**

Initial climb procedure executed:

**BALUK 5F**

Path Terminator	Waypoint Identifier	Fly Over	Course °M(°T)	Magnetic Variation	Distance (NM)	Turn Direction	Altitude (ft)	Speed Limit (kt)	Navigation Specification
IF	RQ601	Y	-	-	-	-	+3000	- 210	RNAV1
CF	RQ603	Y	360 (002.3)	2°	-	-	+6000	- 210	RNAV1
TF	LOMED	-	360 (002.3)	-	6.4	-	+FL90	-	RNAV1
TF	RQ606	-	285 (286.6)	-	10.0	-	+FL110	-	RNAV1
TF	BALUK	-	285 (286.5)	-	5.1	-	+FL120	-	RNAV1

**BALUK 5G**

Path Terminator	Waypoint Identifier	Fly Over	Course °M(°T)	Magnetic Variation	Distance (NM)	Turn Direction	Altitude (ft)	Speed Limit (kt)	Navigation Specification
IF	RQ602	-	-	-	-	-	+3000	-	RNAV1
TF	RQ603	Y	305 (307.1)	-	7.1	-	+6000	-	RNAV1
TF	RQ604	-	305 (307.0)	-	7.9	-	- FL140 + FL100	-	RNAV1
TF	BALUK	-	305 (306.9)	-	9.8	-	+FL120	-	RNAV1

**BALUK 5M**

Path Terminator	Waypoint Identifier	Fly Over	Course °M(°T)	Magnetic Variation	Distance (NM)	Turn Direction	Altitude (ft)	Speed Limit (kt)	Navigation Specification
IF	RQ601	Y	-	-	-	-	+3000	- 210	RNAV1
CF	RQ603	Y	360 (002.3)	2°	-	-	+6000	- 210	RNAV1
TF	RQ604	-	305 (307.0)	-	-	-	- FL140 + FL100	-	RNAV1
TF	BALUK	-	305 (306.9)	-	9.8	-	+FL120	-	RNAV1

**BIKTU 5M (ATC discretion)**

Path Terminator	Waypoint Identifier	Fly Over	Course °M(°T)	Magnetic Variation	Distance (NM)	Turn Direction	Altitude (ft)	Speed Limit (kt)	Navigation Specification
IF	RQ601	Y	-	-	-	-	+3000	- 210	RNAV1
CF	RQ609	-	080 (078.0)	2°	-	R	-	- 210	RNAV1
TF	RQ611	-	050 (051.8)	-	3.5	-	+FL110	-	RNAV1
TF	BIKTU	-	050 (051.9)	-	6.8	-	+FL120	-	RNAV1

**GAVRA 5M**

Path Terminator	Waypoint Identifier	Fly Over	Course °M(°T)	Magnetic Variation	Distance (NM)	Turn Direction	Altitude (ft)	Speed Limit (kt)	Navigation Specification
IF	RQ601	Y	-	-	-	-	+3000	- 210	RNAV1
DF	PRT	-	-	-	-	R	+6000	- 210	RNAV1
TF	RQ612	-	092 (094.0)	-	10.9	-	+FL110	-	RNAV1
TF	GAVRA	-	092 (094.2)	-	16.3	-	+FL120	-	RNAV1

**KUGIX 5M**

Path Terminator	Waypoint Identifier	Fly Over	Course °M(°T)	Magnetic Variation	Distance (NM)	Turn Direction	Altitude (ft)	Speed Limit (kt)	Navigation Specification
IF	RQ601	Y	-	-	-	-	+3000	- 210	RNAV1
DF	PRT	-	-	-	-	R	+6000	- 210	RNAV1
TF	KUGIX	-	153 (155.5)	-	17.0	-	+FL110	-	RNAV1

**LOMED 5F**

Path Terminator	Waypoint Identifier	Fly Over	Course °M(°T)	Magnetic Variation	Distance (NM)	Turn Direction	Altitude (ft)	Speed Limit (kt)	Navigation Specification
IF	RQ601	Y	-	-	-	-	+3000	- 210	RNAV1
CF	RQ603	Y	360 (002.3)	2°	-	-	+6000	- 210	RNAV1
TF	LOMED	-	360 (002.3)	-	6.4	-	+FL90	-	RNAV1

**MAREL 6M**

Path Terminator	Waypoint Identifier	Fly Over	Course °M(°T)	Magnetic Variation	Distance (NM)	Turn Direction	Altitude (ft)	Speed Limit (kt)	Navigation Specification
IF	RQ601	Y	-	-		-	+3500	- 210	RNAV1
CF	GINAR	-	216 (214.0)	2°		-	+6000	-	RNAV1
TF	AKUTO	-	197 (199.1)	-	10.7	-	+FL110	-	RNAV1
TF	RQ613	-	197 (198.8)	-	6.5	-	-	-	RNAV1
TF	MAREL	-	197 (198.7)	-	5.0	-	-	-	RNAV1

**OKMAP 5M**

Path Terminator	Waypoint Identifier	Fly Over	Course °M(°T)	Magnetic Variation	Distance (NM)	Turn Direction	Altitude (ft)	Speed Limit (kt)	Navigation Specification
IF	RQ601	Y	-	-	-	-	+3000	- 210	RNAV1
CF	RQ607	-	062 (060.0)	2°	-	R	-	- 210	RNAV1
TF	RQ608	-	017 (019.3)	-	3.0	-	+FL110	-	RNAV1
TF	OKMAP	-	017 (019.3)	-	3.3	-	+FL130	-	RNAV1

**PRT 5F**

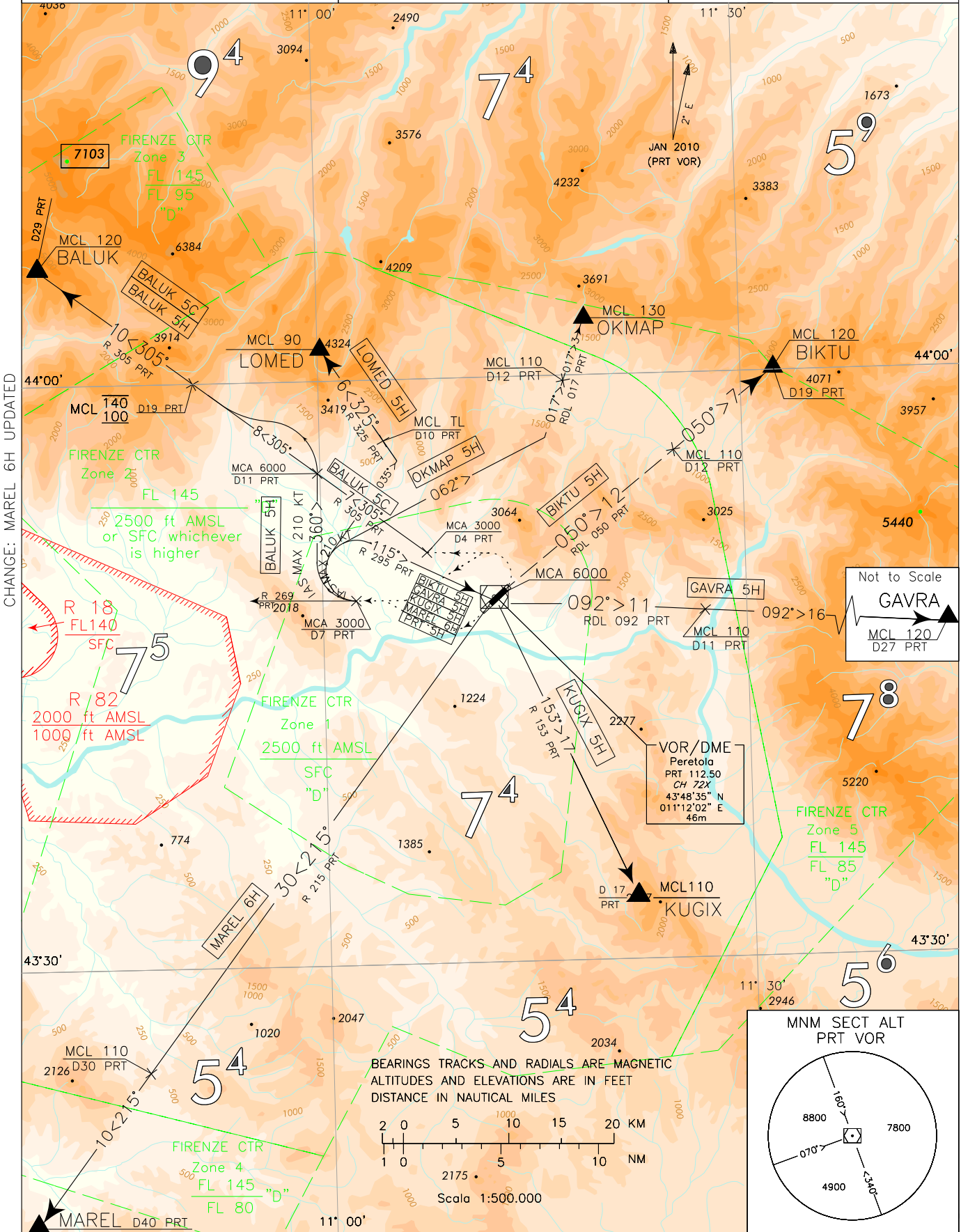
Path Terminator	Waypoint Identifier	Fly Over	Course °M(°T)	Magnetic Variation	Distance (NM)	Turn Direction	Altitude (ft)	Speed Limit (kt)	Navigation Specification
IF	RQ601	Y	-	-	-	-	+3000	- 210	RNAV1
DF	PRT	-	-	-	-	R	+6000	- 210	RNAV1

**WAYPOINT LIST**

<b>Waypoint Identifier</b>	<b>Coordinates</b>
RQ601	43°48'42.18" N 011°02'23.36" E
RQ602	43°50'59.14" N 011°07'39.73" E
RQ603	43°55'15.30" N 010°59'50.95" E
RQ604	44°00'02.16" N 010°51'03.51" E
RQ606	44°04'29.09" N 010°46'54.84" E
RQ607	43°56'51.58" N 011°16'01.00" E
RQ608	43°59'43.77" N 011°17'24.29" E
RQ609	43°53'47.46" N 011°21'09.28" E
RQ611	43°55'56.73" N 011°24'56.65" E
RQ612	43°47'48.50" N 011°27'01.15" E
RQ613	43°21'39.27" N 010°41'16.83" E



LEGEND		SID PRT VOR RWY 05/23		FIRENZE/PERETOLA	
Initial Climb	.....→			TRANSITION ALT 6.000	
SID	————→			FREQUENCIES	
SID ATC discretion	- - - - -→	APP	Firenze APP/Radar	125.825	
Not to Scale	⚡→	TWR	Firenze TWR	118.300	
			Firenze Terminal Information	122.100	
		ATIS	Firenze Terminal Information	129.350	



**SID DESCRIPTION**

Initial climb procedure executed:

**BALUK 5C**

Cross point RDL 305/4 NM PRT DME then proceed along RDL 305 PRT VOR (TR 305°) bound to BALUK.

**REMARK**

1. **Only for Initial Climb RWY05.**
2. **Minimum climb gradient: 462 ft/NM (7,6%) until reaching FL100.**

MCA/MCL: RDL 305/4NM PRT VOR/DME: 3000FT; RDL 305/11NM PRT VOR/DME: 6000FT;  
RDL 305/19NM PRT VOR: tra/between FL100 e/and FL140; BALUK: FL 120

**BALUK 5H**

At 7 NM PRT DME turn right (IAS MAX 210 KT) on TR 360° then intercepting RDL 305 PRT VOR turn left on RDL 305 PRT VOR (TR 305°) bound to BALUK.

**REMARK**

**Minimum climb gradient: 431 ft/NM (7,1%) until reaching FL100.**

MCA/MCL: RDL 269/7NM PRT VOR/DME: 3000FT; INT TR360°/RDL 305 PRT VOR: 6000FT;  
RDL 305/19NM PRT VOR: tra/between FL100 e/and FL140; BALUK: FL 120

**BIKTU 5H (ATC discretion)**

At 7 NM PRT DME turn right (IAS MAX 210 KT) on RDL 295 PRT VOR (TR115°) bound to PRT VOR. Leave PRT VOR on RDL 050 PRT VOR (TR 050°) bound to BIKTU.

**REMARK**

**Minimum climb gradient: 431 ft/NM (7,1%) until reaching FL100.**

MCA/MCL: RDL 269/7NM PRT VOR/DME: 3000FT; PRT VOR: 6000FT; RDL 050/12NM PRT VOR/DME: FL110; BIKTU: FL120

**GAVRA 5H**

At 7 NM PRT DME turn right (IAS MAX 210KT) on RDL 295 PRT VOR (TR 115°) bound to PRT VOR. Leave PRT VOR on RDL 092 PRT VOR (TR 092°) bound to GAVRA.

**REMARK**

**Minimum climb gradient: 431 ft/NM (7,1%) until reaching FL100.**

MCA/MCL: RDL 269/7NM PRT VOR/DME: 3000FT; PRT VOR: 6000FT; RDL 092/11NM PRT VOR/DME: FL110; GAVRA: FL 120

**KUGIX 5H**

At 7 NM PRT DME turn right (IAS MAX 210KT) on RDL 295 PRT VOR (TR 115°) bound to PRT VOR. Leave PRT VOR on RDL 153 PRT VOR (TR 153°) bound to KUGIX.

**REMARK**

**Minimum climb gradient: 431 ft/NM (7,1%) until reaching 6000FT.**

MCA/MCL: RDL 269/7NM PRT VOR/DME: 3000FT; PRT VOR: 6000FT; KUGIX: FL110

**LOMED 5H**

At 7 NM PRT DME turn right (IAS MAX 210 KT) on TR 035° to join RDL 325 PRT VOR (TR 325°) bound to LOMED.

**REMARK**

**Minimum climb gradient: 431 ft/NM (7,1%).**

MCA/MCL: RDL 269/7NM PRT VOR/DME: 3000FT; RDL 325/10NM PRT VOR/DME: TL; LOMED: FL90

**MAREL 6H**

At 7 NM PRT DME turn right (IAS MAX 210KT) on RDL 295 PRT VOR (TR 115°) bound to PRT VOR. Leave PRT VOR on RDL 215 (TR 215°) bound to MAREL.

**REMARK**

**Minimum climb gradient: 431 ft/NM (7,1%) until reaching 6000FT.**

MCA/MCL: RDL 269/7NM PRT VOR/DME: 3000FT; PRT VOR: 6000FT; RDL 215/30NM PRT VOR/DME: FL110;

**OKMAP 5H**

At 7 NM PRT DME turn right (IAS MAX 210 KT) on TR 062° to join RDL 017 PRT VOR (TR 017°) bound to OKMAP.

**REMARK**

**Minimum climb gradient: 431 ft/NM (7,1%).**

MCA/MCL: RDL 269/7NM PRT VOR/DME: 3000FT; RDL 017/12NM PRT VOR/DME: FL110; OKMAP: FL130

**PRT 5H**

At 7 NM PRT DME turn right (IAS MAX 210KT) on RDL 295 PRT VOR (TR 115°) bound to PRT VOR.

**REMARK**

**Minimum climb gradient: 431 ft/NM (7,1%).**

MCA: RDL 269/7NM PRT VOR/DME: 3000FT; PRT VOR: 6000FT