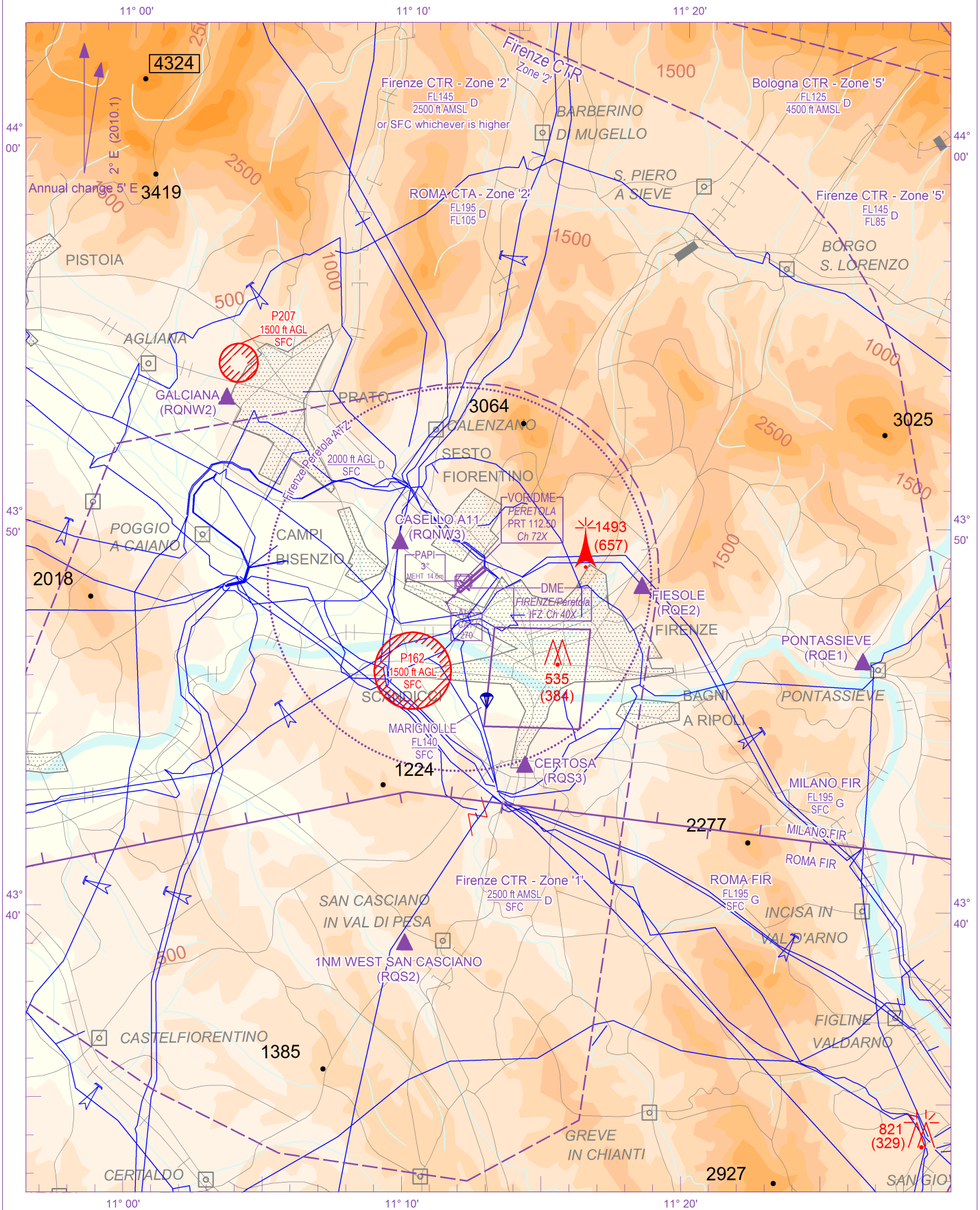


SCALE 1:250.000	FIS Roma Information 125.750 Padova Information 126.425 Milano Information 128.925 Firenze APP 125.925 APP Firenze Radar 125.825 TWR Firenze TWR 122.100 118.300 ATIS Firenze Terminal Information 129.350	AD ELEV 142	L I R Q	FIRENZE/PERETOLA
-----------------	--	-----------------------	------------------	-------------------------



CHANGE: DME-P 'IFZ' TYPE OF AID MODIFIED AND POSITION UPDATED

AIRSPACE CLASSIFICATION See AIP ENR 1.4	REMARK	WARNING
TRANSITION ALT 6000 FT		
ELEV AND ALT IN FT IF NOT OTHERWISE INDICATED		

ICAO - INSTRUMENT APPROACH CHART

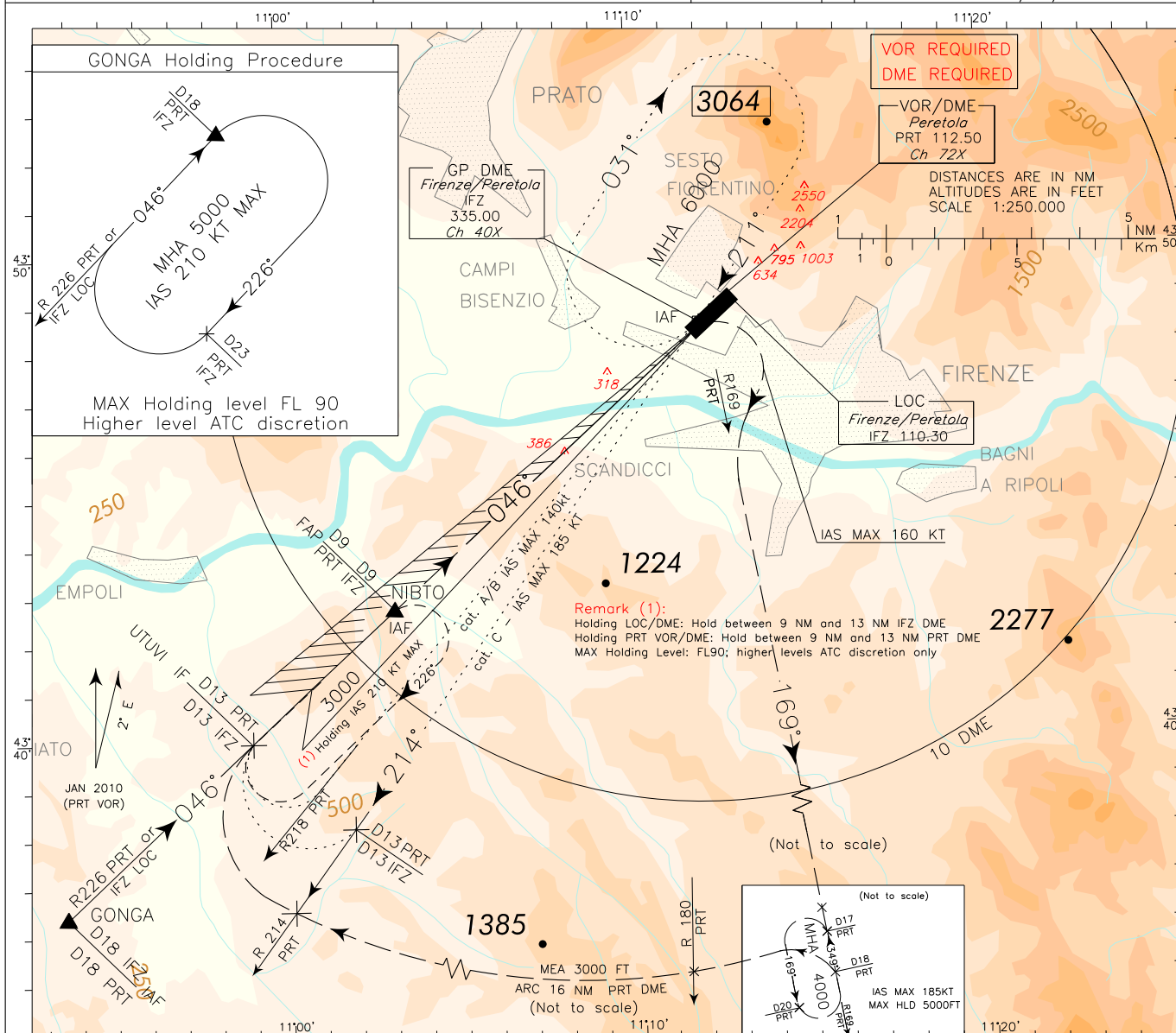
AD 2 LIRQ 5-3

DOC 8168 ED 5 - 2006 - AMDT 4

CHANGE: DME-P, IFZ, TYPE OF AID MODIFIED IN DME AND COORDINATES UPDATED

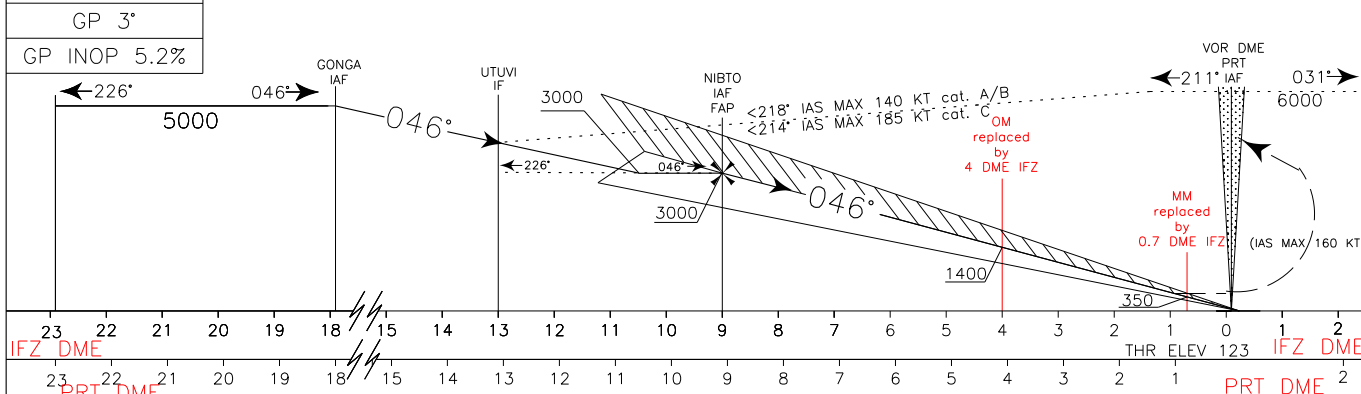
APP Firenze APP/Radar	125.825	AD ELEV	142	L I R Q
TWR Firenze TWR	118.300			
ATIS Firenze Terminal Information	122.100 129.350			

FIRENZE/PERETOLA
ILS - Z RWY 05
CAT A/B/C



TRANSITION ALT 6000
 RDH 15.0 M
 GP 3°
 GP INOP 5.2%

MISSED APPROACH: As soon as practicable, not before 1 NM IFZ DME (1.1NM PRT DME) before THR05, climbing 4000ft, turn right (IAS MAX 160 kt) to intercept and follow RDL 169 PRT VOR inbound holding fix, RDL 169/17NM PRT VOR/DME (holding pattern between 17NM and 20NM DME, inbound TR349°; left turns, IAS MAX 185kt and MAX holding altitude 5000ft).



STRAIGHT IN APPROACH	OCA(OCH)	A			B			C			GS	FT PER MIN	DIST IFZ	ALT(HGT)	MNM SECT ALT	
		ILS M.A. MNM CLIMB GRADIENT 3.5%	635(512)	647(524)	655(532)	ILS M.A. MNM CLIMB GRADIENT 2.5%	885(762)	897(774)	905(782)	PRT					VOR	
										80	425	6 DME	2030(1907)	8800	7800	
										100	530	5 DME	1715(1592)	8000	7000	
										120	635	4 DME	1400(1277)	7000	6000	
										140	740	3 DME	1080(957)	6000	5000	
										160	850	2 DME	760(637)	5000	4000	

CIRCLING NOT ALLOWED

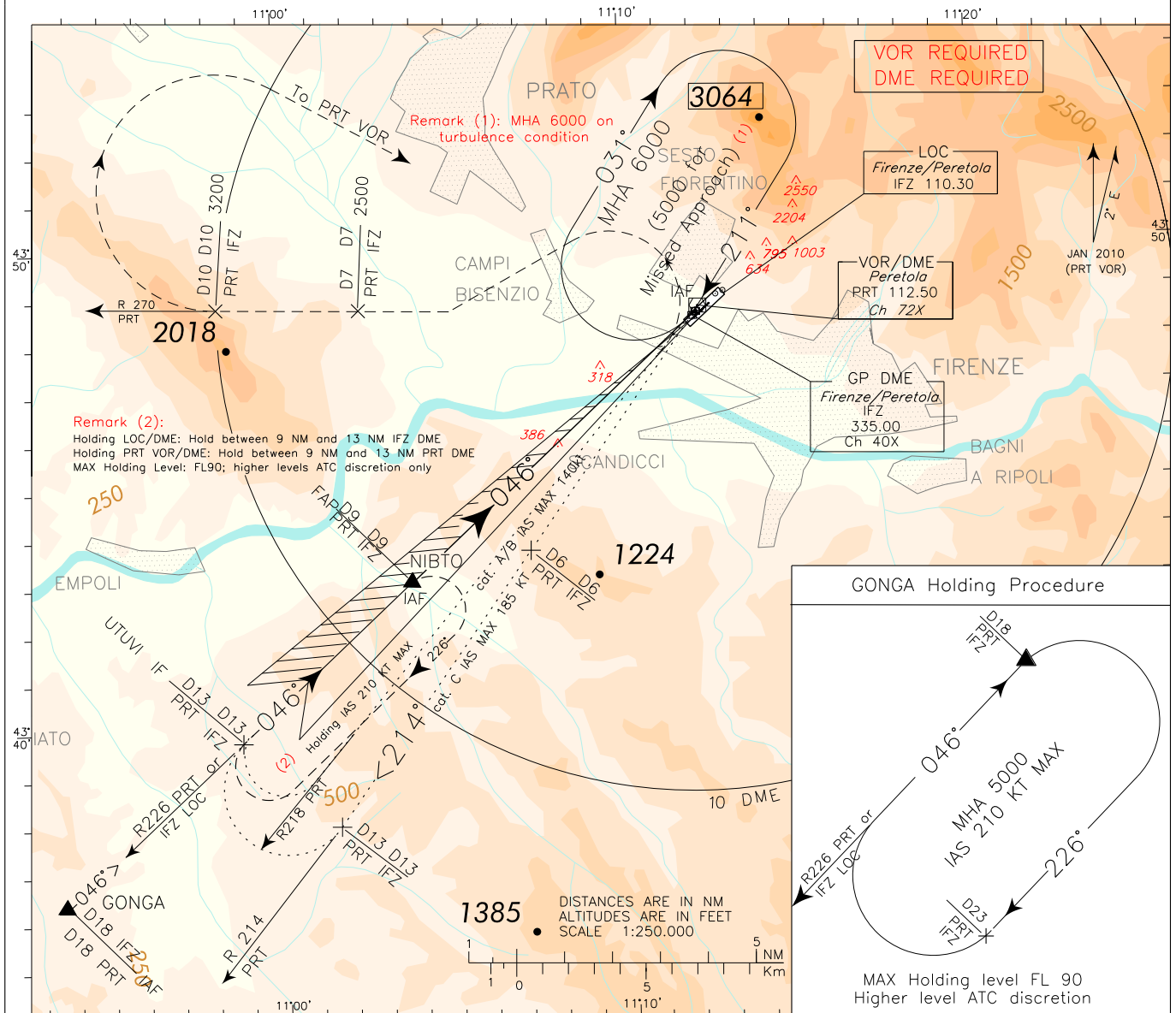
FIX/POINT	Coordinates (WGS84)
IAF (GONGA)	43°36'26"N 010°53'37"E
IAF (PRT VOR)	43°48'35.5"N 011°12'01.8"E
IF (UTUVI)	43°39'48.2"N 010°58'47.4"E
IAF FAP (NIBTO)	43°42'25.2"N 011°02'48.9"E

ICAO - INSTRUMENT APPROACH CHART

AD 2 LIRQ 5-5

CHANGE: DME P 'IFZ' TYPE OF AID MODIFIED IN DME AND COORDINATES UPDATED

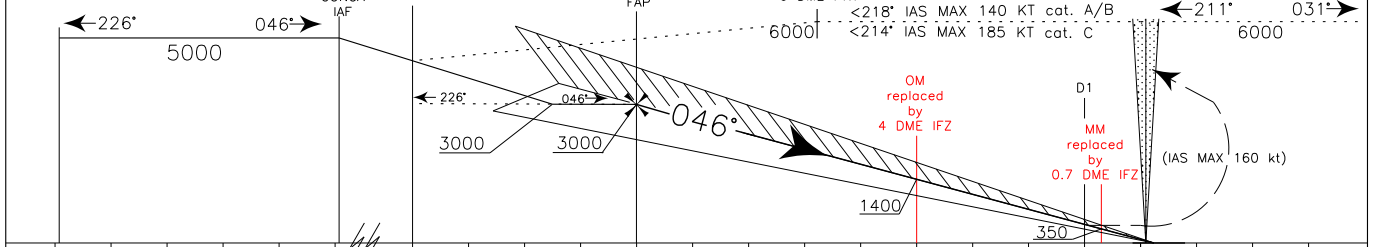
DOC 8168 ED 5 - 2006 - AMDT 4	APP Firenze APP/Radar	125.825	AD ELEV	LIRQ	FIRENZE/PERETOLA ILS - Y RWY 05 CAT A/B/C
	TWR Firenze TWR	118.300	142		
	ATIS Firenze Terminal Information	122.100 129.350			



TRANSITION ALT 6000

MISSED APPROACH: As soon as practicable, not before 1 NM IFZ DME (1.1NM PRT DME) before THR05, climbing to 5000 ft, turn left (with IAS MAX 160 kt) to intercept and follow RDL 270 PRT VOR. At 10 NM PRT DME (MCA 3200ft) turn right (with IAS MAX 200 kt) bound to PRT VOR.

RDH 15.0 M
GP 3°
GP INOP 5.2%



IFZ DME	23	22	21	20	19	18	13	12	11	10	9	8	7	6	5	4	3	2	1	0	1	2	3	IFZ DME
PRT DME																								PRT DME

STRAIGHT IN APPROACH	OCA(OCH)	A	B	C	GS	FT PER MIN	DIST IFZ	ALT(HGT)	MNM SECT ALT
	ILS M.A. MNM CLIMB GRADIENT 3.7%	625(502)	637(514)	645(522)					
	GP INOP	VEDI LOC Y / SEE LOC Y			100	530	5 DME	1715(1592)	VOR
	CIRCLING NOT ALLOWED				120	635	4 DME	1400(1277)	
					140	740	3 DME	1080(957)	
					160	850	2 DME	760(637)	

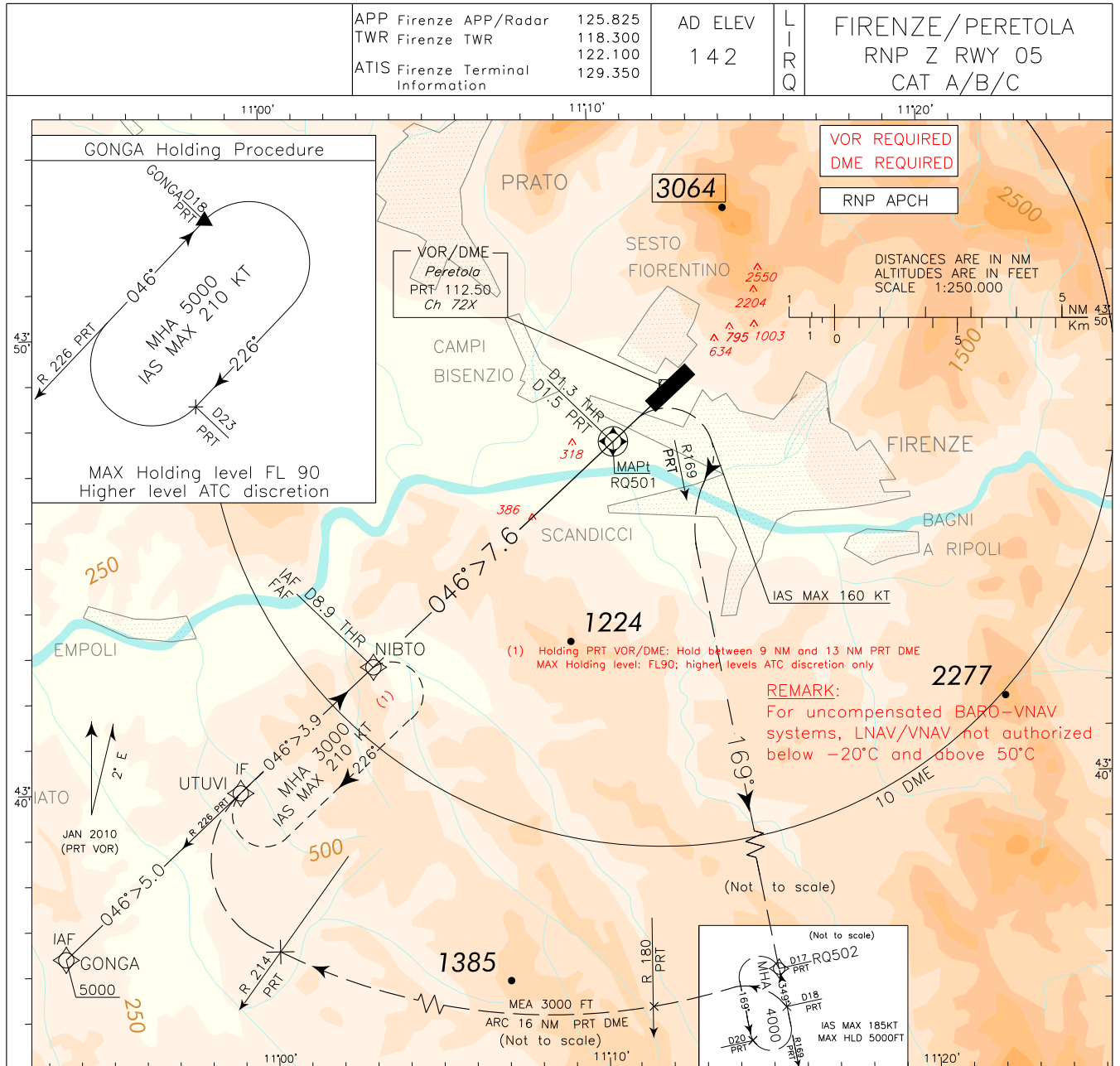
FIX/POINT	Coordinates (WGS84)
IAF (GONGA)	43°36'26"N 010°53'37"E
IAF (PRT VOR)	43°48'35.5"N 011°12'01.8"E
IF (UTUVI)	43°39'48.2"N 010°58'47.4"E
IAF FAP (NIBTO)	43°42'25.2"N 011°02'48.9"E

ICAO - INSTRUMENT APPROACH CHART

AD 2 LIRQ 5-7

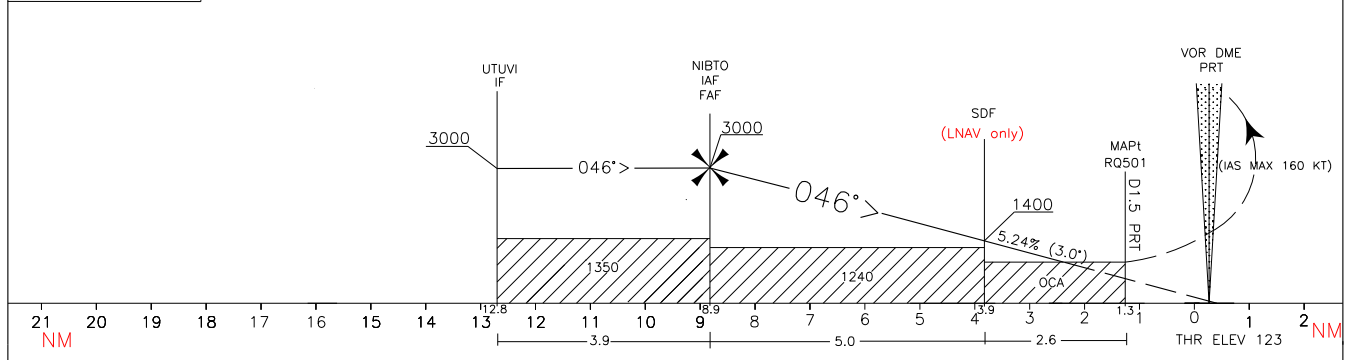
DOC 8168 ED 6 - 2014 - AMDT 7

CHANGE: REPRINTED CHART



TRANSITION ALT 6000 MISSED APPROACH: On MAPt (RQ501), climbing to 4000ft, turn right (IAS MAX 160 kt) to join and follow TR169° (RDL169 PRT VOR) inbound holding fix RQ502 (RDL 169/17NM PRT VOR/DME), (holding pattern between 17NM and 20NM DME, inbound TR349°; left turns, IAS MAX 185kt and MAX holding altitude 5000ft).

RDH 15.0 M



STRAIGHT IN APPROACH	OCA(OCH)			GS	FT PER MIN	DIST MAPt	DIST THRO5	ALT(HGT)	MNM SECT ALT ARP
	A	B	C						
LNAV/VNAV	920(797)	932(809)	940(817)	80	425	5.7	7	2400(2277)	8800 ⊕
	940(817)			100	530	4.7	6	2080(1957)	
LNAV	940(817)			120	635	3.7	5	1765(1642)	
	940(817)			140	740	2.7	4	1445(1322)	
	940(817)			160	850	1.7	3	1125(1002)	

CIRCLING NOT ALLOWED

TABULAR DESCRIPTION

RNP Z RWY05 CAT A/B/C – Instrument Approach Procedure

Serial Number	Path Terminator	Waypoint Identifier	Fly Over	Course °M(°T)	Magnetic Variation (°)	Distance (NM)	Turn Direction	Altitude (ft)	Speed Limit (Kt)	VPA°/TCH (m)	Navigation Specification/ Performance
010	IF	GONGA	-	-	-		-	+5000	-	-	RNP APCH
020	TF	UTUVI	-	046° (048.1°)	-	5.0	-	+3000	-	-	RNP APCH
030	TF	NIBTO	-	046° (048.1°)	-	3.9	-	+3000	-	-	RNP APCH
040	TF	RQ501	Y	046° (048.1°)	-	7.6	-	+940 ⁽¹⁾		-	RNP APCH
-	-	RWY05	-	-	-	-	-	@172 ⁽²⁾	-	-3.0/15.0	-
050	CF	RQ502	-	169° (171.0°)	2	-	R	+4000	-160	-	RNP APCH
060	HM	RQ502	Y	349° (351.0°)	2		L	+4000	-185		Conventional

(1) For LNAV only

(2) THR Altitude plus TCH.

Missed Approach Holding

Path Terminator	Waypoint (FIX)	Inbound Course °M (°T)	Navaid	Outbound leg	Turn Direction	Minimum Altitude (FT)	Maximum Altitude (FT)	Speed Limit (kt)	Magnetic Variation (°)	Navigation Performance
HM	RQ502 (RDL169/17NM)	349° (351.0°)	PRT VOR/DME	Not exceed 20NM DME	L	4000	5000	- 185	2	Conventional

WAYPOINT LIST

Waypoint Identifier	Coordinates
RQ501	43°47'31.05" N 011°10'37.74" E
RQ502	43°31'48.17" N 011°15'41.08" E

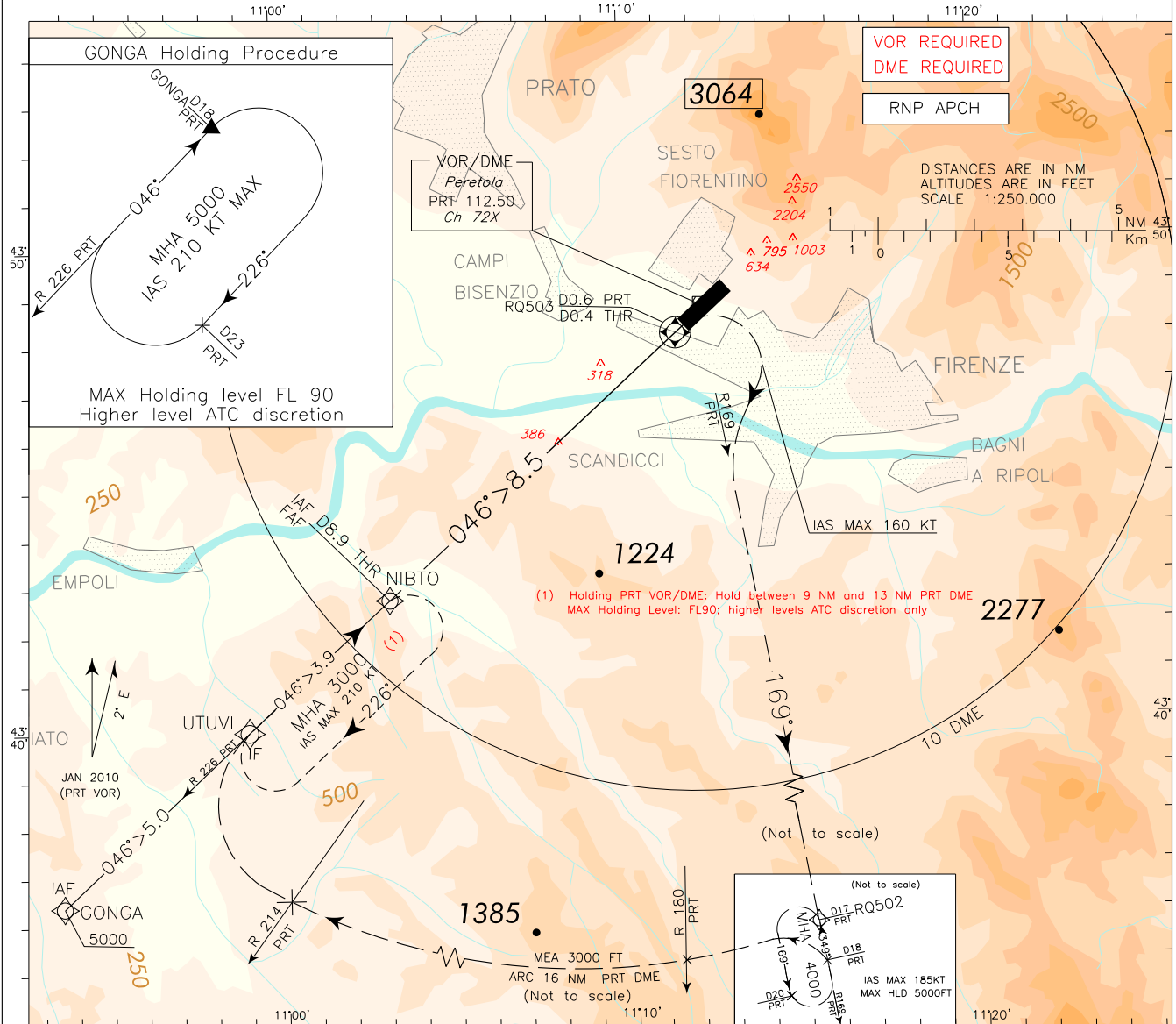
ICAO – INSTRUMENT APPROACH CHART

AD 2 LIRQ 5-9

DOC 8168 ED 6 – 2014 – AMDT 7

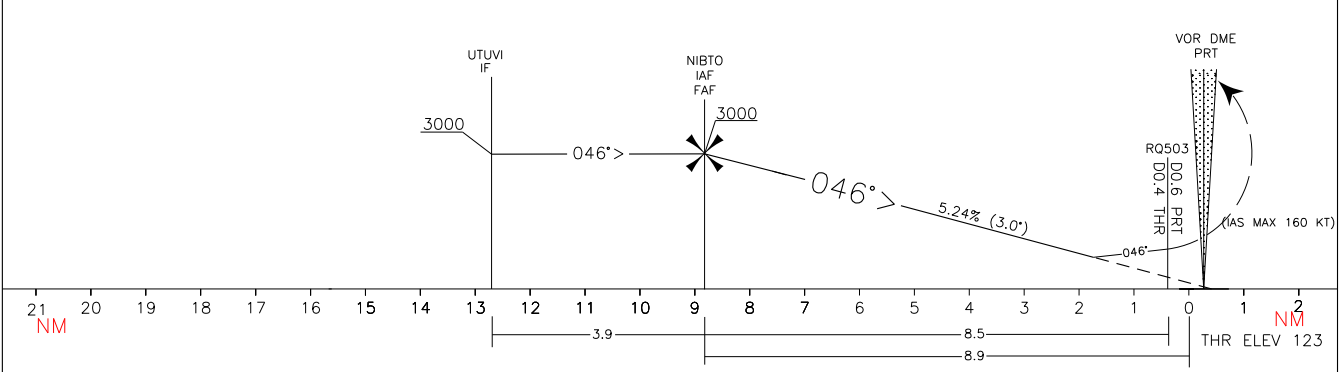
CHANGE: REPRINTED CHART

EGNOS CH 41195 E05A	APP Firenze APP/Radar TWR Firenze TWR ATIS Firenze Terminal Information	125.825 118.300 122.100 129.350	AD ELEV 142	L I R Q	FIRENZE/PERETOLA RNP Y RWY 05 (LPV only) CAT A/B/C
---------------------------	---	--	----------------	------------------	--



TRANSITION ALT 6000
 RDH 15.0 M

MISSED APPROACH: Proceed on TR046° climbing to 4000ft. On RQ503 turn right (IAS MAX 160 kt) to join and follow TR169° (RDL169 PRT VOR) inbound holding fix RQ502 (RDL 169/17NM PRT VOR/DME), (holding pattern between 17NM and 20NM DME, inbound TR349°; left turns, IAS MAX 185kt and MAX holding altitude 5000ft).



OCA(OCH)		A	B	C
STRAIGHT IN APPROACH	LPV	730(607)	742(619)	750(627)
CIRCLING NOT ALLOWED				

GS	FT PER MIN	DIST THR05	ALT(HGT)	MNM SECT ALT ARP 8800
80	425	7	2400(2277)	
100	530	6	2080(1957)	
120	635	5	1765(1642)	
140	740	4	1445(1322)	
160	850	3	1125(1002)	

TABULAR DESCRIPTION

RNP Y RWY05 (LPV only) CAT A/B/C – Instrument Approach Procedure

Serial Number	Path Terminator	Waypoint Identifier	Fly Over	Course °M(°T)	Magnetic Variation (°)	Distance (NM)	Turn Direction	Altitude (ft)	Speed Limit (Kt)	VPA°/TCH (m)	Navigation Specification/ Performance
010	IF	GONGA	-	-	-		-	+5000	-	-	RNP APCH
020	TF	UTUVI	-	046° (048.1°)	-	5.0	-	+3000	-	-	RNP APCH
030	TF	NIBTO	-	046° (048.1°)	-	3.9	-	+3000	-	-	RNP APCH
040	TF	RQ503	Y	046° (048.1°)	-	8.5	-	-	-	-	RNP APCH
-	-	RWY05	-	-	-	-	-	@172 ⁽¹⁾	-	-3.0/15.0	-
050	CF	RQ502	-	169° (171.0°)	2	-	R	+4000	-160	-	RNP APCH
060	HM	RQ502	Y	349° (351.0°)	2		L	+4000	-185		Conventional

(1) THR Altitude plus TCH.

Missed Approach Holding

Path Terminator	Waypoint (FIX)	Inbound Course °M (°T)	Navaid	Outbound leg	Turn Direction	Minimum Altitude (FT)	Maximum Altitude (FT)	Speed Limit (kt)	Magnetic Variation (°)	Navigation Performance
HM	RQ502 (RDL169/17NM)	349° (351.0°)	PRT VOR/DME	Not exceed 20NM DME	L	4000	5000	- 185	2	Conventional

WAYPOINT LIST

Waypoint Identifier	Coordinates
RQ502	43°31'48.17" N 011°15'41.08" E
RQ503	43°48'06.30" N 011°11'32.19" E

SBAS FAS DATA BLOCK LIRQ RNP Y RWY05 (LPV only) CAT A/B/C

INPUT DATA	
PARAMETERS	VALUES
Operation Type MAPt	0
SBAS Provider	1
Airport Identifier	LIRQ
Runway	05
Runway Direction	0
Approach Performance Designator	0
Route Indicator	Y
Reference Path Data Selector	0
Reference Path Identifier	E05A
LTP/FTP Latitude	434821.4900N
LTP/FTP Longitude	0111155.6490E
LTP/FTP Ellipsoidal Height (metres)	82.6
FPAP Latitude	434852.9045N
Delta FPAP Latitude (seconds)	31.4145
FPAP Longitude	0111244.2015E
Delta FPAP Longitude (seconds)	48.5525
Threshold Crossing Height	15.0
TCH Units Selector	1
Glidepath Angle (degrees)	3.00
Course Width (metres)	80.00
Length Offset (metres)	0
HAL	40.0
VAL	50.0

OUTPUT DATA	
Data Block	10 11 12 09 0C 05 C8 00 01 35 30 05 E4 AA CC 12 02 56 CE 04 3A 17 6D F5 00 51 7B 01 2C 81 2C 01 00 00 C8 FA DA 62 A5 52
Calculated CRC Value	DA62A552

Required Additional Data	
ICAO Code	LI
LTP/FTP Orthometric Height (metres)	37.4
FPAP Orthometric Height (metres)	43.4

Intenzionalmente bianca

Intentionally left blank

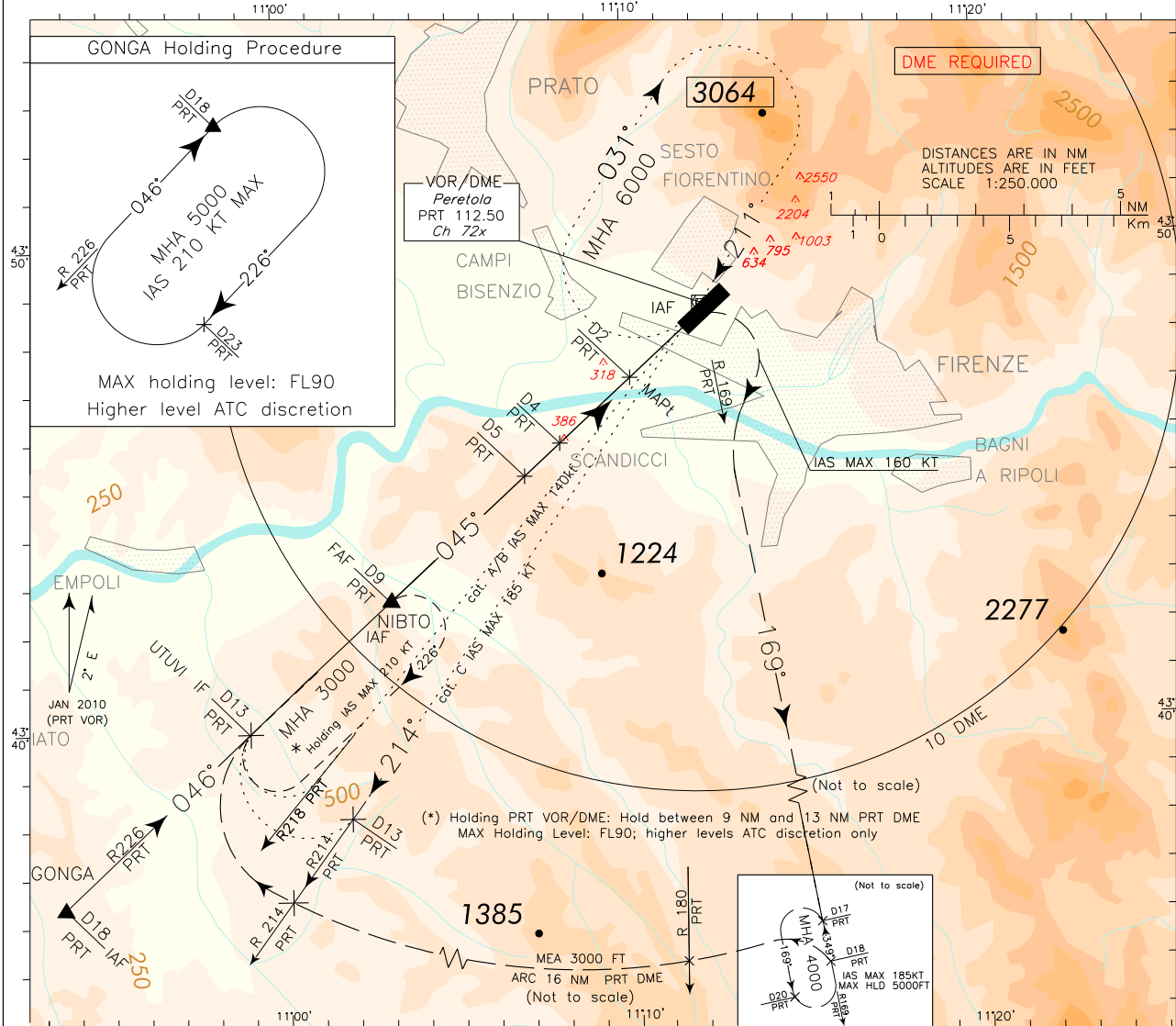
ICAO – INSTRUMENT APPROACH CHART

AD 2 LIRQ 5-13

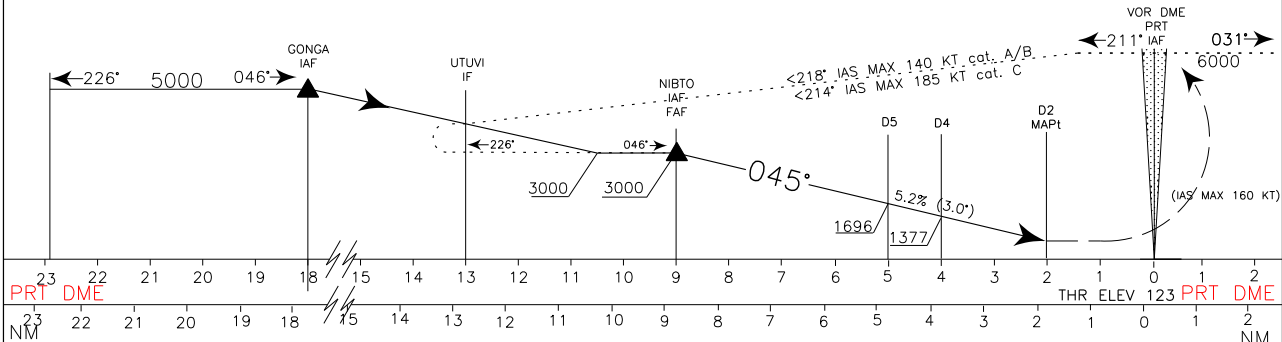
DOC 8168 ED 5 – 2006 – AMDT 4
CHANGE: NIBTO HOLDING PATTERN ORIENTATION UPDATED

APP	Firenze APP/Radar	125.825
TWR	Firenze TWR	118.300
ATIS	Firenze Terminal Information	129.350

AD ELEV	142	LIRQ	FIRENZE/PERETOLA
			VOR RWY 05
			CAT A/B/C



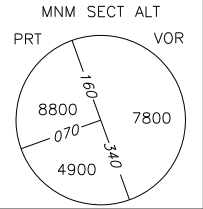
TRANSITION ALT 6000 MISSED APPROACH: On MAPt (*) turn right (IAS MAX 160kt), climbing to 4000ft, to intercept and follow RDL169 PRT VOR inbound holding fix RDL 169/17NM PRT VOR/DME (holding pattern between 17NM and 20NM PRT DME; inbound TR349; left turns; IAS MAX 185kt and MAX holding altitude 5000ft).
 [*] Remark: Turn before MAPt not allowed



OCA(OCH)		A	B	C
STRAIGHT IN APPROACH	VORDME	1100 (980)		
CIRCLING NOT ALLOWED				

REMARKS:
 1) Timing not allowed for defining MAPt
 2) NOT STANDARD ICAO:
 FINAL APPROACH TRACK
 AT 1400m LIES 201m NORTH
 OF EXTENDED CENTRE LINE

GS	FT PER MIN	DIST	ALT(HGT)
80	425	7 DME	2331(2208)
100	530	6 DME	2013(1890)
120	635	5 DME	1696(1573)
140	740	4 DME	1377(1254)
160	850		

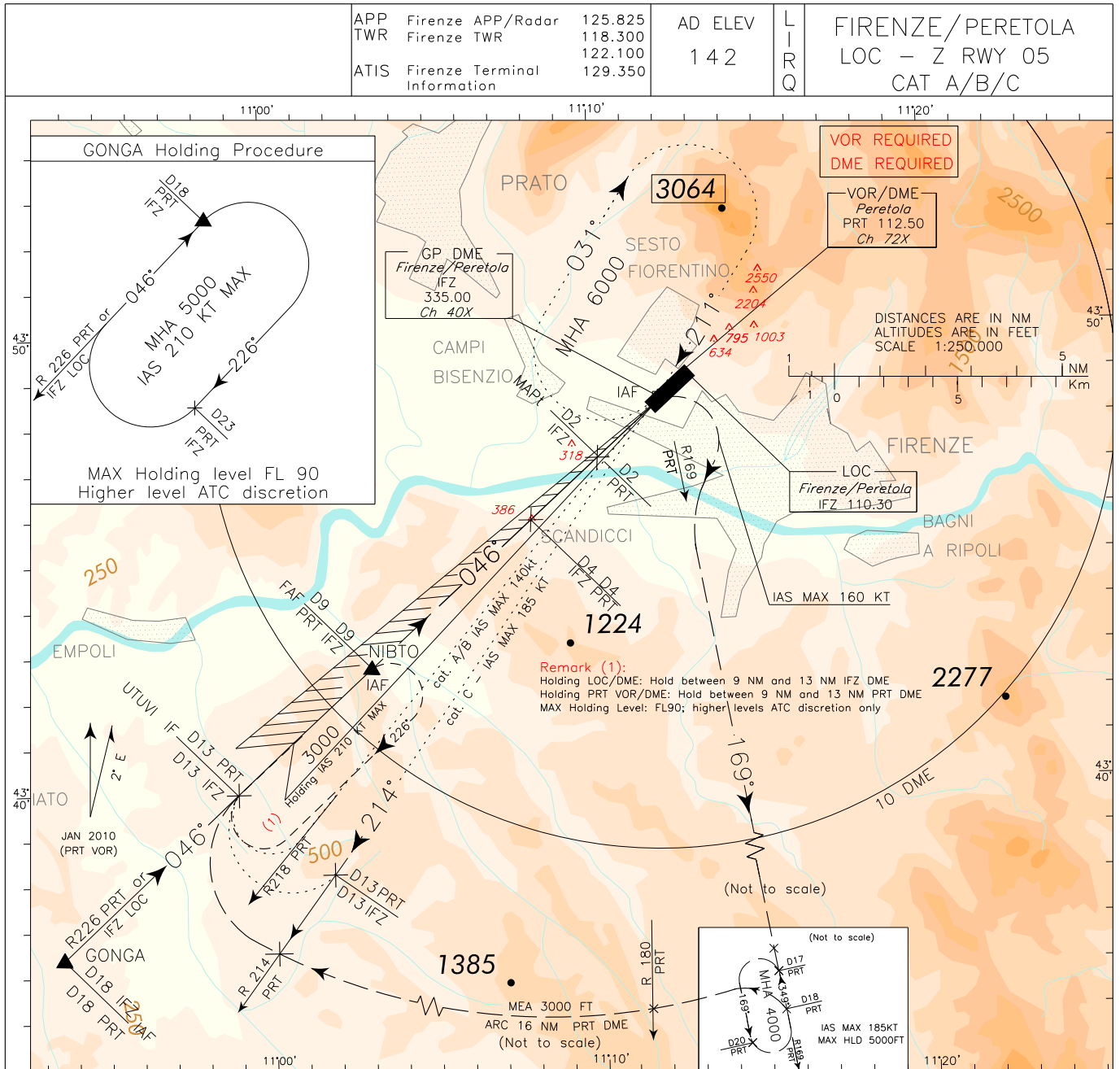


FIX/POINT	Coordinates (WGS84)
IAF (GONGA)	43°36'26"N 010°53'37"E
IAF (PRT VOR)	43°48'35.5"N 011°12'01.8"E
IF (UTUVI)	43°39'48.2"N 010°58'47.4"E
IAF/FAF (NIBTO)	43°42'25.2"N 011°02'48.9"E
INT RDL225/05 NM PRT VOR/DME	43°45'12.1"N 011°06'57.9"E
INT RDL225/04 NM PRT VOR/DME	43°45'52.8"N 011°07'58.6"E
MAPt	43°47'14.2"N 011°10'00.4"E

ICAO - INSTRUMENT APPROACH CHART

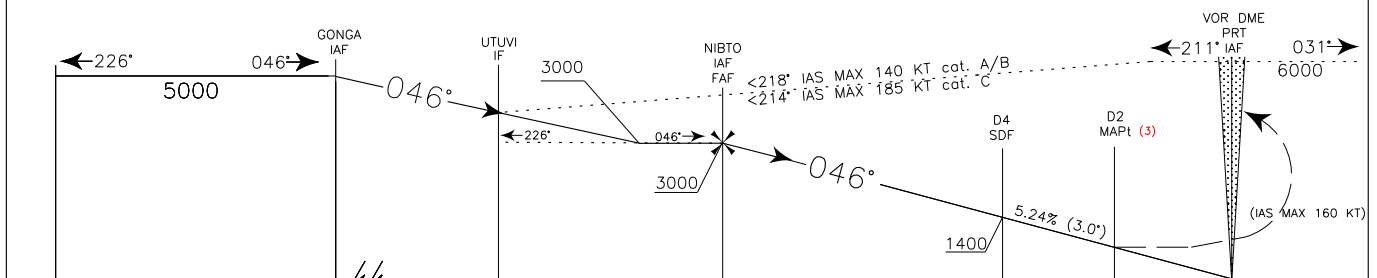
AD 2 LIRQ 5-15

CHANGE: DME-P 'IFZ', TYPE OF AID MODIFIED IN DME AND COORDINATES UPDATED
DOC 8168 ED 5 - 2006 - AMDT 4



TRANSITION ALT 6000 MISSED APPROACH: On MAPT (2) turn right (IAS MAX 160 kt), climbing to 4000ft, to intercept and follow RDL 169 PRT VOR inbound holding fix RDL 169/17 NM PRT VOR/DME (holding pattern between 17NM and 20NM DME, inbound TR349°; left turns, IAS MAX 185kt and MAX holding altitude 5000ft).

Remark (2): Turn before MAPT not allowed

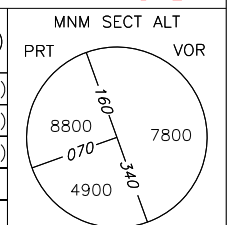


IFZ DME	23	22	21	20	19	18	15	14	13	12	11	10	9	8	7	6	5	4	3	2	1	0	1	2	IFZ DME
PRT DME																									

OCA(OCH)		A	B	C
STRAIGHT IN APPROACH	LOC	940(817)		
CIRCLING NOT ALLOWED				

REMARK (3):
Timing not allowed for defining MAPT

GS	FT PER MIN	DIST IFZ	ALT(HGT)
80	425	6 DME	2030(1907)
100	530	5 DME	1715(1592)
120	635	4 DME	1400(1277)
140	740	3 DME	1080(957)
160	850		



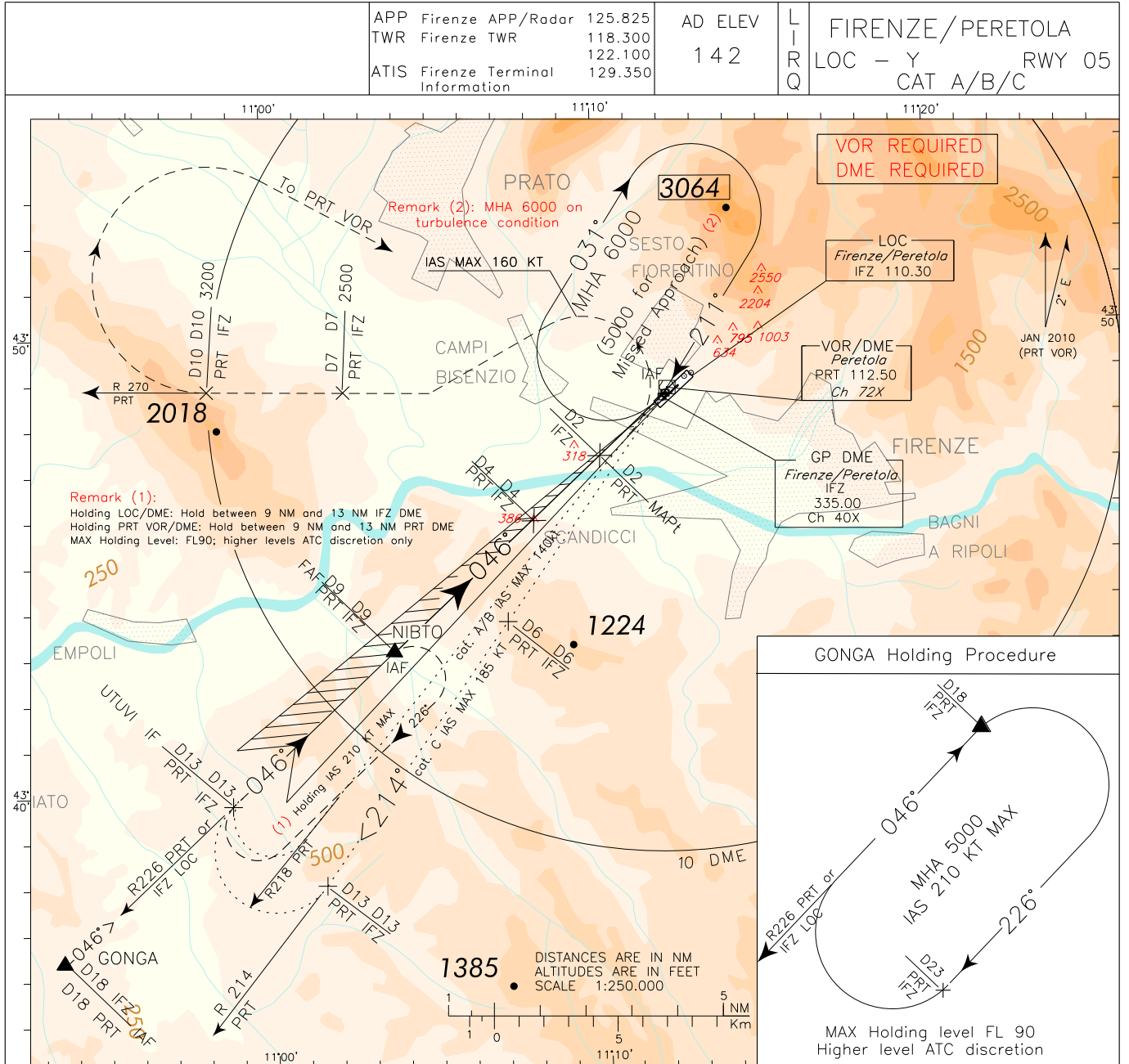
FIX/POINT	Coordinates (WGS84)
IAF (GONGA)	43°36'26"N 010°53'37"E
IAF (PRT VOR)	43°48'35.5"N 011°12'01.8"E
IF (UTUVI)	43°39'48.2"N 010°58'47.4"E
IAF FAF (NIBTO)	43°42'25.2"N 011°02'48.9"E
226/D4 IFZ LOC/DME	43°45'47.7"N 011°07'58.9"E
MAPt	43°47'07.7"N 011°10'02.4"E

ICAO - INSTRUMENT APPROACH CHART

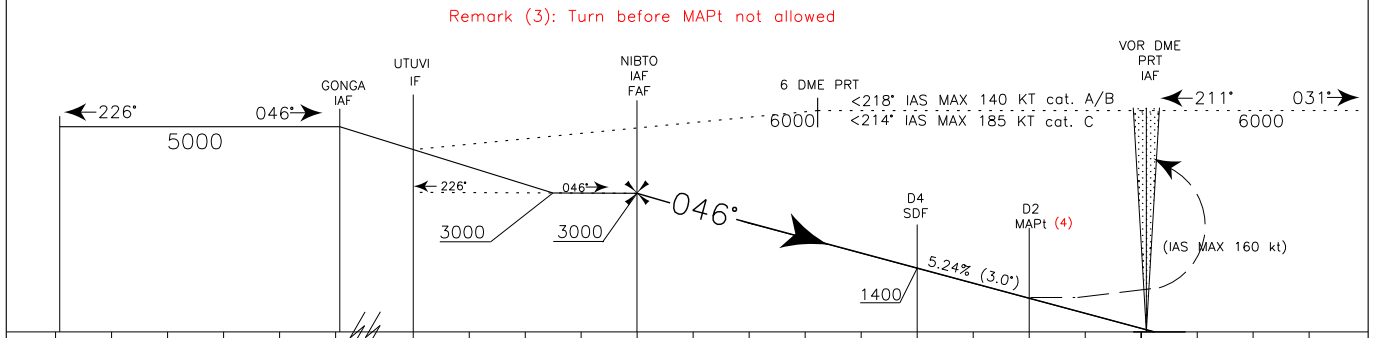
AD 2 LIRQ 5-17

DOC 8168 ED 5 - 2006 - AMDT 4

CHANGE: DME-P 'IFZ' TYPE OF AID MODIFIED IN DME AND COORDINATES UPDATED



TRANSITION ALT 6000
MISSED APPROACH: On MAPt (3) turn left (IAS MAX 160 kt), climbing to 5000 ft, to intercept and follow RDL 270 PRT VOR. At 10 NM PRT DME (MCA 3200ft) turn right (with IAS MAX 200 kt) bound to PRT VOR.



OCA(OCH)		A	B	C	REMARK (4): Timing not allowed for defining MAPt	GS	FT PER MIN	DIST IFZ	ALT(HGT)	MNM SECT ALT		
STRAIGHT IN APPROACH	LOC M.A. MNM CLIMB GRADIENT 3.7%	760(637)				80	425	6 DME	2030(1907)	PRT	VOR	
	LOC M.A. MNM CLIMB GRADIENT 2.5%	1210(1087)				100	530	5 DME	1715(1592)			
	CIRCLING NOT ALLOWED			120		635	4 DME	1400(1277)				
			140	740	3 DME	1080(957)						
			160	850	2 DME	760(637)						

FIX/POINT	Coordinates (WGS84)
IAF (GONGA)	43°36'26"N 010°53'37"E
IAF (PRT VOR)	43°48'35.5"N 011°12'01.8"E
IF (UTUVI)	43°39'48.2"N 010°58'47.4"E
IAF FAF (NIBTO)	43°42'25.2"N 011°02'48.9"E
226/D4 IFZ LOC/DME	43°45'47.7"N 011°07'58.9"E
MAPt	43°47'07.7"N 011°10'02.4"E