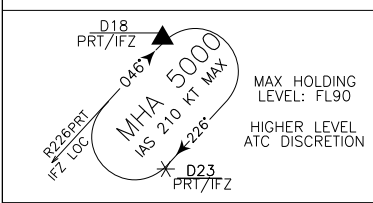
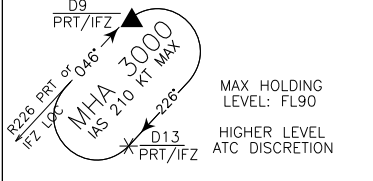


FREQUENCIES	
APP Firenze APP/Radar	125.825
TWR Firenze TWR	118.300
ATIS Firenze Terminal Information	122.100 129.350

GONGA HOLDING PROCEDURE



NIBTO HOLDING PROCEDURE



STAR RNAV	FIRENZE PERETOLA
TRANSITION ALTITUDE 6000	

AIRSPACE CLASSIFICATION
SEE AIP ENR 1.4

CHANGE: MAREL 2Q UPDATED - IBRID 2Q/2P MODIFIED

3² 8⁵

43°30'

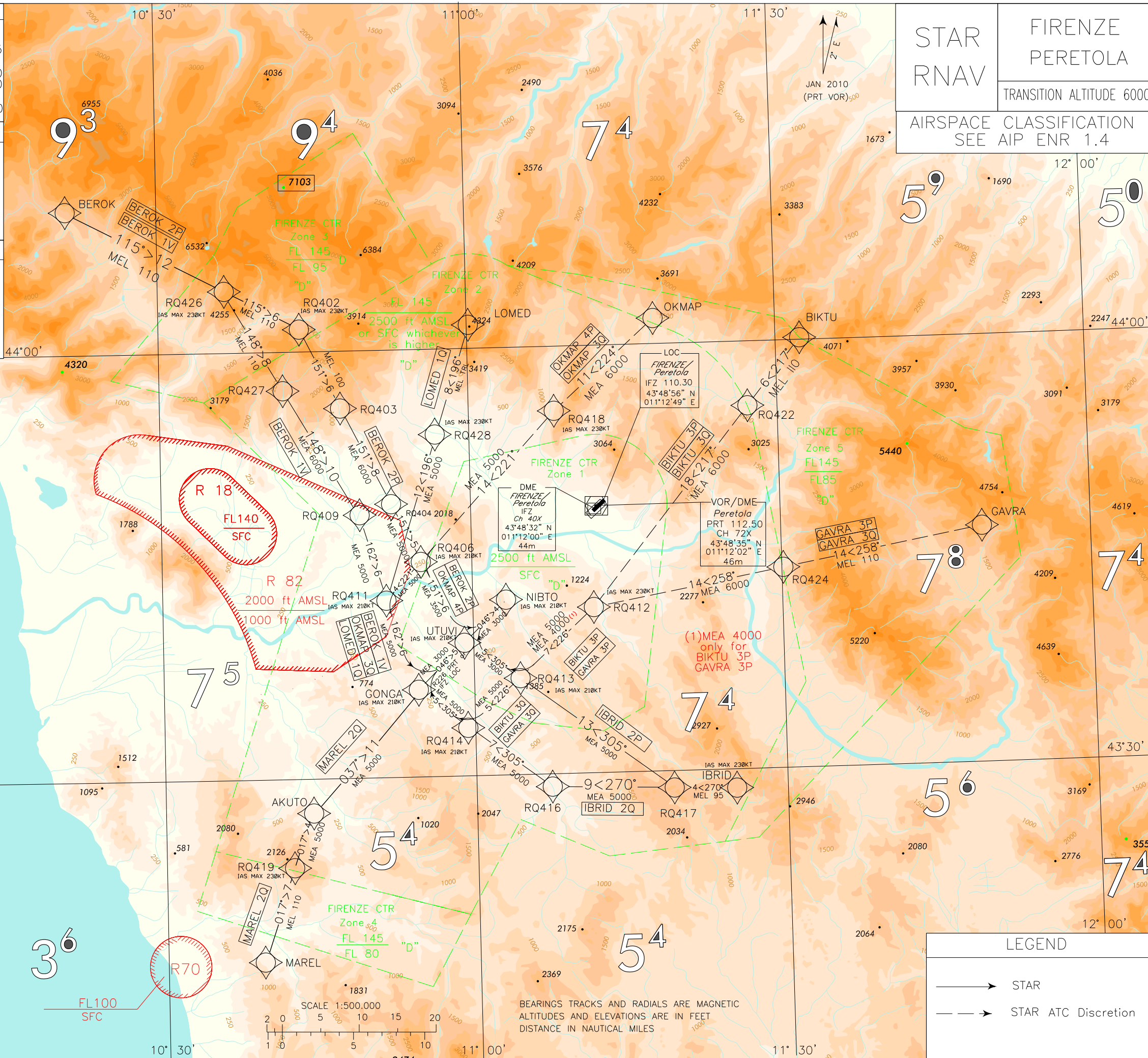
2⁸ 10° 00'

MNM SECT ALT
ARP

8800

3⁶ R70

FL100
SFC



LEGEND	
	STAR
	STAR ATC Discretion

STAR RNAV Firenze/Peretola

BEROK 2P

Path Terminator	Waypoint Identifier	Fly Over	Course °M(°T)	Magnetic Variation	Distance (NM)	Turn Direction	Altitude (ft)	Speed Limit (kt)	Navigation Specification
IF	BEROK	-	-	-	-	-	-	-	RNAV 1
TF	RQ402	-	115 (117.4)	-	18.5	-	+ FL110	- 230	RNAV 1
TF	RQ403	-	151 (153.3)	-	6.0	-	+ FL100	-	RNAV 1
TF	RQ404	-	151 (153.3)	-	7.6	-	+ 6000	-	RNAV 1
TF	RQ406	-	151 (153.3)	-	4.5	-	+ 5000	- 210	RNAV 1
TF	UTUVI	-	151 (153.4)	-	6.0	-	+ 3500	-	RNAV 1
TF	NIBTO	-	046 (048.1)	-	3.9	L	+ 3000	-	RNAV 1

BEROK 1V

Path Terminator	Waypoint Identifier	Fly Over	Course °M(°T)	Magnetic Variation	Distance (NM)	Turn Direction	Altitude (ft)	Speed Limit (kt)	Navigation Specification
IF	BEROK	-	-	-	-	-	-	-	RNAV 1
TF	RQ426	-	115 (117.4)	-	12.4	-	+ FL110	- 230	RNAV 1
TF	RQ427	-	148 (150.1)	-	7.9	-	-	-	RNAV 1
TF	RQ409	-	148 (150.2)	-	10.3	-	+ 6000	-	RNAV 1
TF	GONGA	-	162 (164.2)	-	12.4	-	+ 5000	- 210	RNAV 1
TF	UTUVI	-	046 (048.1)	-	5.0	L	+ 3000	-	RNAV 1
TF	NIBTO	-	046 (048.1)	-	3.9	-	-	-	RNAV 1

BIKTU 3P (ATC DISCRETION)

Path Terminator	Waypoint Identifier	Fly Over	Course °M(°T)	Magnetic Variation	Distance (NM)	Turn Direction	Altitude (ft)	Speed Limit (kt)	Navigation Specification
IF	BIKTU	-	-	-	-	-	-	-	RNAV 1
TF	RQ422	-	217 (219.0)	-	6.0	-	+ FL110	-	RNAV 1
TF	RQ412	-	217 (219.0)	-	17.8	-	+ 6000	- 230	RNAV 1
TF	RQ413	-	226 (227.8)	-	7.2	-	+ 4000	- 210	RNAV 1
TF	UTUVI	-	305 (306.6)	-	5.1	-	+ 3000	-	RNAV 1
TF	NIBTO	-	046 (048.1)	-	3.9	R	-	-	RNAV 1

BIKTU 3Q (ATC DISCRETION)

Path Terminator	Waypoint Identifier	Fly Over	Course °M(°T)	Magnetic Variation	Distance (NM)	Turn Direction	Altitude (ft)	Speed Limit (kt)	Navigation Specification
IF	BIKTU	-	-	-	-	-	-	-	RNAV 1
TF	RQ422	-	217 (219.0)	-	6.0	-	+ FL110	-	RNAV 1
TF	RQ412	-	217 (219.0)	-	17.8	-	+ 6000	- 230	RNAV 1
TF	RQ414	-	226 (227.8)	-	12.2	-	+ 5000	- 210	RNAV 1
TF	GONGA	-	305 (306.4)	-	5.1	-	-	- 210	RNAV 1
TF	UTUVI	-	046 (048.1)	-	5.0	R	+ 3000	-	RNAV 1
TF	NIBTO	-	046 (048.1)	-	3.9	-	-	-	RNAV 1

GAVRA 3P (ATC DISCRETION)

Path Terminator	Waypoint Identifier	Fly Over	Course °M(°T)	Magnetic Variation	Distance (NM)	Turn Direction	Altitude (ft)	Speed Limit (kt)	Navigation Specification
IF	GAVRA	-	-	-	-	-	-	-	RNAV 1
TF	RQ424	-	258 (260.0)	-	14.2	-	+ FL110	-	RNAV 1
TF	RQ412	-	258 (259.8)	-	13.6	-	+ 6000	- 230	RNAV 1
TF	RQ413	-	226 (227.8)	-	7.2	-	+ 4000	- 210	RNAV 1
TF	UTUVI	-	305 (306.6)	-	5.1	-	+ 3000	-	RNAV 1
TF	NIBTO	-	046 (048.1)	-	3.9	R	-	-	RNAV 1

GAVRA 3Q (ATC DISCRETION)

Path Terminator	Waypoint Identifier	Fly Over	Course °M(°T)	Magnetic Variation	Distance (NM)	Turn Direction	Altitude (ft)	Speed Limit (kt)	Navigation Specification
IF	GAVRA	-	-	-	-	-	-	-	RNAV 1
TF	RQ424	-	258 (260.0)	-	14.2	-	+ FL110	-	RNAV 1
TF	RQ412	-	258 (259.8)	-	13.6	-	+ 6000	- 230	RNAV 1
TF	RQ414	-	226 (227.8)	-	12.2	-	+ 5000	- 210	RNAV 1
TF	GONGA	-	305 (306.4)	-	5.1	-	-	- 210	RNAV 1
TF	UTUVI	-	046 (048.1)	-	5.0	R	+ 3000	-	RNAV 1
TF	NIBTO	-	046 (048.1)	-	3.9	-	-	-	RNAV 1

IBRID 2P

Path Terminator	Waypoint Identifier	Fly Over	Course °M(°T)	Magnetic Variation	Distance (NM)	Turn Direction	Altitude (ft)	Speed Limit (kt)	Navigation Specification
IF	IBRID	-	-	-	-	-	-	- 230	RNAV 1
TF	RQ417	-	270 (272.0)	-	4.3	-	+ FL95	-	RNAV 1
TF	RQ413	-	305 (306.5)	-	13.3	-	+ 5000	- 210	RNAV 1
TF	UTUVI	-	305 (306.6)	-	5.1	-	+ 3000	- 210	RNAV 1
TF	NIBTO	-	046 (048.1)	-	3.9	R	-	-	RNAV 1

IBRID 2Q

Path Terminator	Waypoint Identifier	Fly Over	Course °M(°T)	Magnetic Variation	Distance (NM)	Turn Direction	Altitude (ft)	Speed Limit (kt)	Navigation Specification
IF	IBRID	-	-	-	-	-	-	- 230	RNAV 1
TF	RQ417	-	270 (272.0)	-	4.3	-	+ FL95	-	RNAV 1
TF	RQ416	-	270 (272.0)	-	8.6	-	+ 5000	-	RNAV 1
TF	GONGA	-	305 (306.5)	-	12.4	-	-	- 210	RNAV 1
TF	UTUVI	-	046 (048.1)	-	5.0	R	+ 3000	-	RNAV 1
TF	NIBTO	-	046 (048.1)	-	3.9	-	-	-	RNAV 1

LOMED 1Q

Path Terminator	Waypoint Identifier	Fly Over	Course °M(°T)	Magnetic Variation	Distance (NM)	Turn Direction	Altitude (ft)	Speed Limit (kt)	Navigation Specification
IF	LOMED	-	-	-	-	-	-	-	RNAV 1
TF	RQ428	-	196 (198.3)	-	8.0	-	+ TRL	- 230	RNAV 1
TF	RQ411	-	196 (198.2)	-	12.5	-	+ 5000	- 210	RNAV 1
TF	GONGA	-	162 (164.2)	-	6.0	-	-	-	RNAV 1
TF	UTUVI	-	046 (048.1)	-	5.0	L	+ 3000	-	RNAV 1
TF	NIBTO	-	046 (048.1)	-	3.9	-	-	-	RNAV 1

MAREL 2Q

Path Terminator	Waypoint Identifier	Fly Over	Course °M(°T)	Magnetic Variation	Distance (NM)	Turn Direction	Altitude (ft)	Speed Limit (kt)	Navigation Specification
IF	MAREL	-	-	-	-	-	-	-	RNAV 1
TF	RQ419	-	017 (018.7)	-	7.1	-	+ FL110	- 230	RNAV 1
TF	AKUTO	-	017 (018.7)	-	4.5	-	+ 5000	-	RNAV 1
TF	GONGA	-	037 (038.6)	-	11.0	-	-	- 210	RNAV 1
TF	UTUVI	-	046 (048.1)	-	5.0	-	+ 3000	-	RNAV 1
TF	NIBTO	-	046 (048.1)	-	3.9	-	-	-	RNAV 1

OKMAP 4P (ATC DISCRETION)

Path Terminator	Waypoint Identifier	Fly Over	Course °M(°T)	Magnetic Variation	Distance (NM)	Turn Direction	Altitude (ft)	Speed Limit (kt)	Navigation Specification
IF	OKMAP	-	-	-	-	-	-	-	RNAV 1
TF	RQ418	-	224 (226.0)	-	10.6	-	+ 6000	- 230	RNAV 1
TF	RQ406	-	221 (222.9)	-	14.1	-	+ 5000	- 210	RNAV 1
TF	UTUVI	-	151 (153.4)	-	6.0	-	+ 3500	-	RNAV 1
TF	NIBTO	-	046 (048.1)	-	3.9	L	+ 3000	-	RNAV 1

OKMAP 3Q (ATC DISCRETION)

Path Terminator	Waypoint Identifier	Fly Over	Course °M(°T)	Magnetic Variation	Distance (NM)	Turn Direction	Altitude (ft)	Speed Limit (kt)	Navigation Specification
IF	OKMAP	-	-	-	-	-	-	-	RNAV 1
TF	RQ418	-	224 (226.0)	-	10.6	-	+ 6000	- 230	RNAV 1
TF	RQ411	-	221 (229.9)	-	18.1	-	+ 5000	- 210	RNAV 1
TF	GONGA	-	162 (164.2)	-	6.0	-	-	-	RNAV 1
TF	UTUVI	-	046 (048.1)	-	5.0	L	+ 3000	-	RNAV 1
TF	NIBTO	-	046 (048.1)	-	3.9	-	-	-	RNAV 1

HOLDING

Path Terminator	Waypoint Name	Inbound Track	Turn Direction	Altitude Constraint	Speed Limit	Recommended Navaid	Bearing/Range to Navaid	Navigation Performance
HM	GONGA	046°	R	+ 5000 (1)	210	IFZ LOC/DME or PRT VOR/DME	226/D18 (2)	Conventional
HM	NIBTO	046°	R	+ 3000 (1)	210	IFZ LOC/DME or PRT VOR/DME	226/D9 (3)	Conventional

REMARKS

- (1) MAX Holding level: FL90; Higher levels ATC discretion only
 (2) Outbound leg must not exceed 23NM PRT/IFZ DME
 (3) Outbound leg must not exceed 13NM PRT/IFZ DME

WAYPOINT LIST

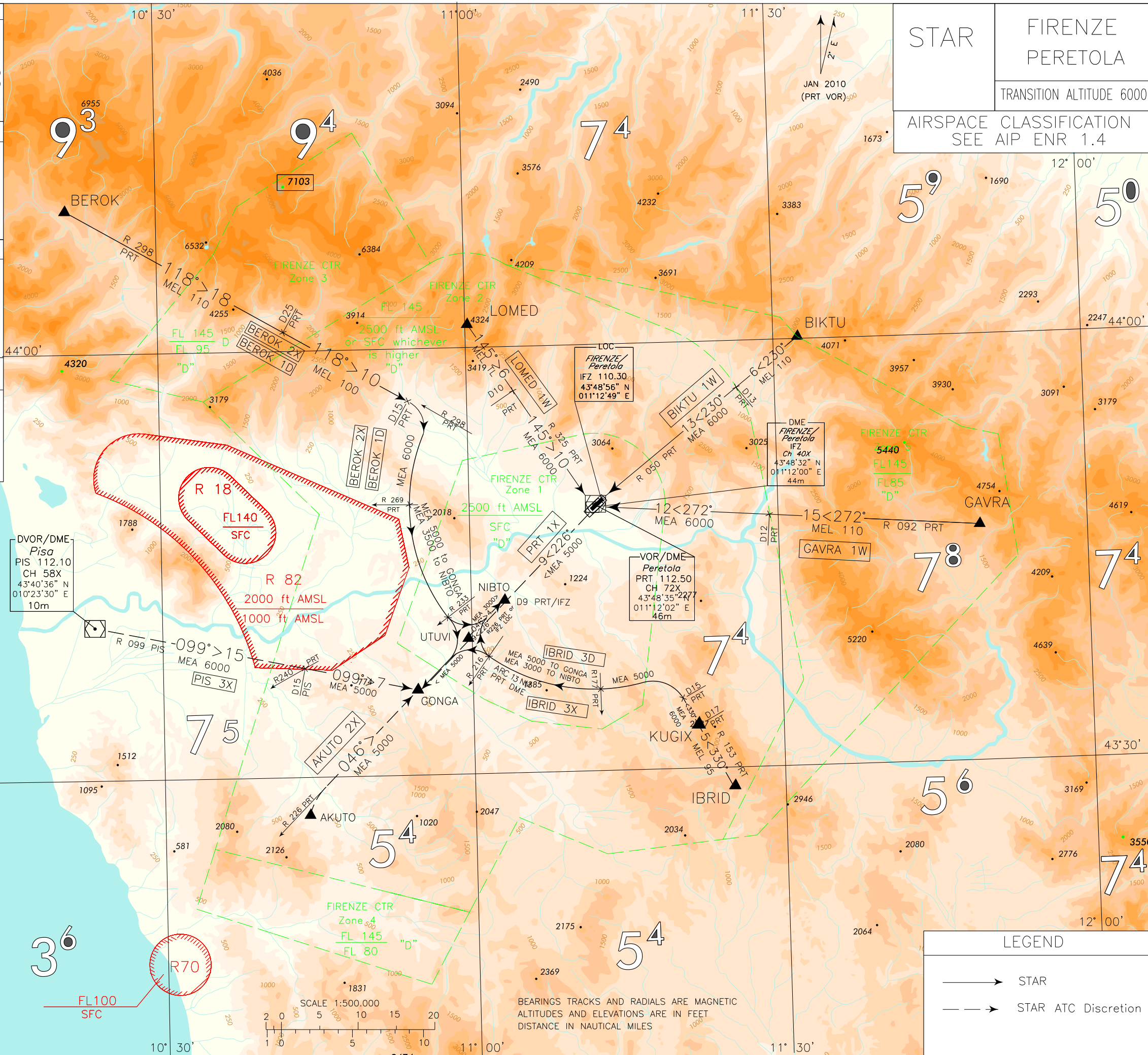
Waypoint Identifier	Coordinates
RQ402	44°01'24.96" N 010°43'49.23" E
RQ403	43°56'01.72" N 010°47'34.24" E
RQ404	43°49'11.93" N 010°52'18.41" E
RQ406	43°45'08.76" N 010°55'06.48" E
RQ409	43°48'23.81" N 010°48'56.70" E
RQ411	43°42'12.50" N 010°51'22.07" E
RQ412	43°41'37.40" N 011°11'42.11" E
RQ413	43°36'47.53" N 011°04'22.62" E
RQ414	43°33'24.58" N 010°59'16.01" E
RQ416	43°29'06.00" N 011°07'16.97" E
RQ417	43°28'49.37" N 011°19'04.77" E
RQ418	43°55'29.22" N 011°08'20.90" E
RQ419	43°23'36.55" N 010°42'11.33" E
RQ422	43°55'27.37" N 011°27'06.55" E
RQ424	43°44'03.93" N 011°30'08.59" E
RQ426	44°04'12.17" N 010°36'25.23" E
RQ427	43°57'18.68" N 010°41'53.81" E
RQ428	43°54'02.30" N 010°56'44.27" E

Intenzionalmente bianca

Intentionally left blank

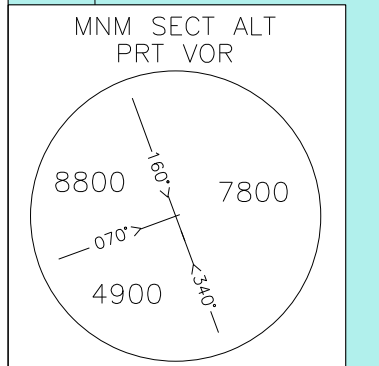
FREQUENCIES	
APP Firenze APP/Radar	125.825
TWR Firenze TWR	118.300
ATIS Firenze Terminal Information	129.350
GONGA HOLDING PROCEDURE	
	MAX HOLDING LEVEL: FL90 HIGHER LEVEL ATC DISCRETION
NIBTO HOLDING PROCEDURE	
	MAX HOLDING LEVEL: FL90 HIGHER LEVEL ATC DISCRETION
PRT VOR/DME HOLDING PROCEDURE	
	PRT VOR/DME

STAR	FIRENZE PERETOLA
TRANSITION ALTITUDE 6000	
AIRSPACE CLASSIFICATION SEE AIP ENR 1.4	



CHANGE: IBRID 3D/3X MODIFIED

3 ²	8 ⁵
2 ⁸	7 ⁵
3 ⁶	5 ⁴



LEGEND	
	STAR
	STAR ATC Discretion

STAR Firenze/Peretola**AKUTO 2X (ATC discretion)**

AKUTO, then turn right until intercepting and following RDL 226 PRT VOR (TR 046°) bound to GONGA.

MEA: AKUTO – GONGA: 5000FT

BEROK 1D

BEROK – TR 118° (RDL 298 PRT VOR) until 15NM PRT DME, then turn right until joining ARC 13 NM PRT DME; intercepting RDL 233 PRT VOR turn left until intercepting and following RDL 226 PRT VOR or IFZ LOC (TR 046°) bound to NIBTO.

MEL/MEA: BEROK – RDL 298/25NM PRT VOR/DME: FL110; RDL 298/25NM PRT VOR/DME – RDL 298/15NM PRT VOR/DME: FL100; RDL 298/15NM PRT VOR/DME – INT ARC 13NM PRT DME/RDL 269 PRT VOR: 6000FT ; INT ARC 13NM PRT DME/RDL 269 PRT VOR – INT ARC 13NM PRT DME/RDL 233 PRT VOR: 3500FT; INT ARC 13NM PRT DME/RDL 233 PRT VOR – NIBTO: 3000FT

BEROK 2X

BEROK – TR 118° (RDL 298 PRT VOR) until 15NM PRT DME, then turn right until joining ARC 13 NM PRT DME; intercepting RDL 233 PRT VOR turn right until intercepting and following RDL 226 PRT VOR (TR 226°) bound to GONGA.

MEL/MEA: BEROK – RDL 298/25NM PRT VOR/DME: FL110; RDL 298/25NM PRT VOR/DME – RDL 298/15NM PRT VOR/DME: FL100; RDL 298/15NM PRT VOR/DME – INT ARC 13NM PRT DME/RDL 269 PRT VOR: 6000FT ; INT ARC 13NM PRT DME/RDL 269 PRT VOR – GONGA: 5000FT

BIKTU 1W

BIKTU – TR 230° (RDL 050 PRT VOR) bound to PRT VOR/DME.

MEL/MEA: BIKTU – RDL 050/13NM PRT VOR/DME: FL 110; RDL 050/13NM PRT VOR/DME – PRT VOR/DME: 6000FT

GAVRA 1W

GAVRA – TR 272° (RDL 092 PRT VOR) bound to PRT VOR/DME.

MEL/MEA: GAVRA – RDL 092/12NM PRT VOR/DME: FL 110; RDL 092/12 PRT VOR/DME – PRT VOR/DME: 6000FT

IBRID 3D

IBRID – KUGIX - TR 330° (RDL 153 PRT VOR) until 15NM PRT DME, then turn left until intercepting and following ARC 13NM PRT DME; intercepting RDL 216 PRT VOR turn right until intercepting and following RDL 226 PRT VOR or IFZ LOC (TR 046°) bound to NIBTO.

MEA: IBRID – KUGIX: FL95; KUGIX- RDL 153/15NM PRT VOR/DME: 6000FT; RDL 153/15NM PRT VOR/DME – INT ARC 13NM PRT DME/RDL 177 PRT VOR: 5000FT; INT ARC 13 NM PRT DME/RDL 177 PRT VOR – NIBTO: 3000FT

IBRID 3X

IBRID - KUGIX – TR 330° (RDL 153 PRT VOR) until 15NM PRT DME, then turn left until joining ARC 13NM PRT DME; intercepting RDL 216 PRT VOR turn left to join RDL 226 PRT VOR (TR 226°) to GONGA

MEA: IBRID – KUGIX: FL95; KUGIX- RDL 153/15NM PRT VOR/DME:: 6000FT; RDL 153/15NM PRT VOR/DME – GONGA: 5000FT

LOMED 1W

LOMED – TR 145° (RDL 325 PRT VOR) bound to PRT VOR/DME.

MEL/MEA: LOMED – RDL 325/10NM PRT VOR/DME: TL; RDL 325/10 PRT VOR/DME – PRT VOR/DME: 6000FT

PIS 3X (ATC discretion)

PIS VOR/DME – TR 099° (RDL 099 PIS VOR) – GONGA.

MEA: PIS VOR/DME – RDL 099/15NM PIS VOR/DME (INT RDL 240 PRT VOR): 6000FT; RDL 099/15NM PIS VOR/DME (INT RDL 240 PRT VOR) – GONGA: 5000FT

PRT 1X (ATC discretion)

PRT VOR/DME – TR 226° (RDL 226 PRT VOR) bound to GONGA.

MEL/MEA: PRT VOR/DME – GONGA: 5000FT

Intenzionalmente bianca

Intentionally left blank