

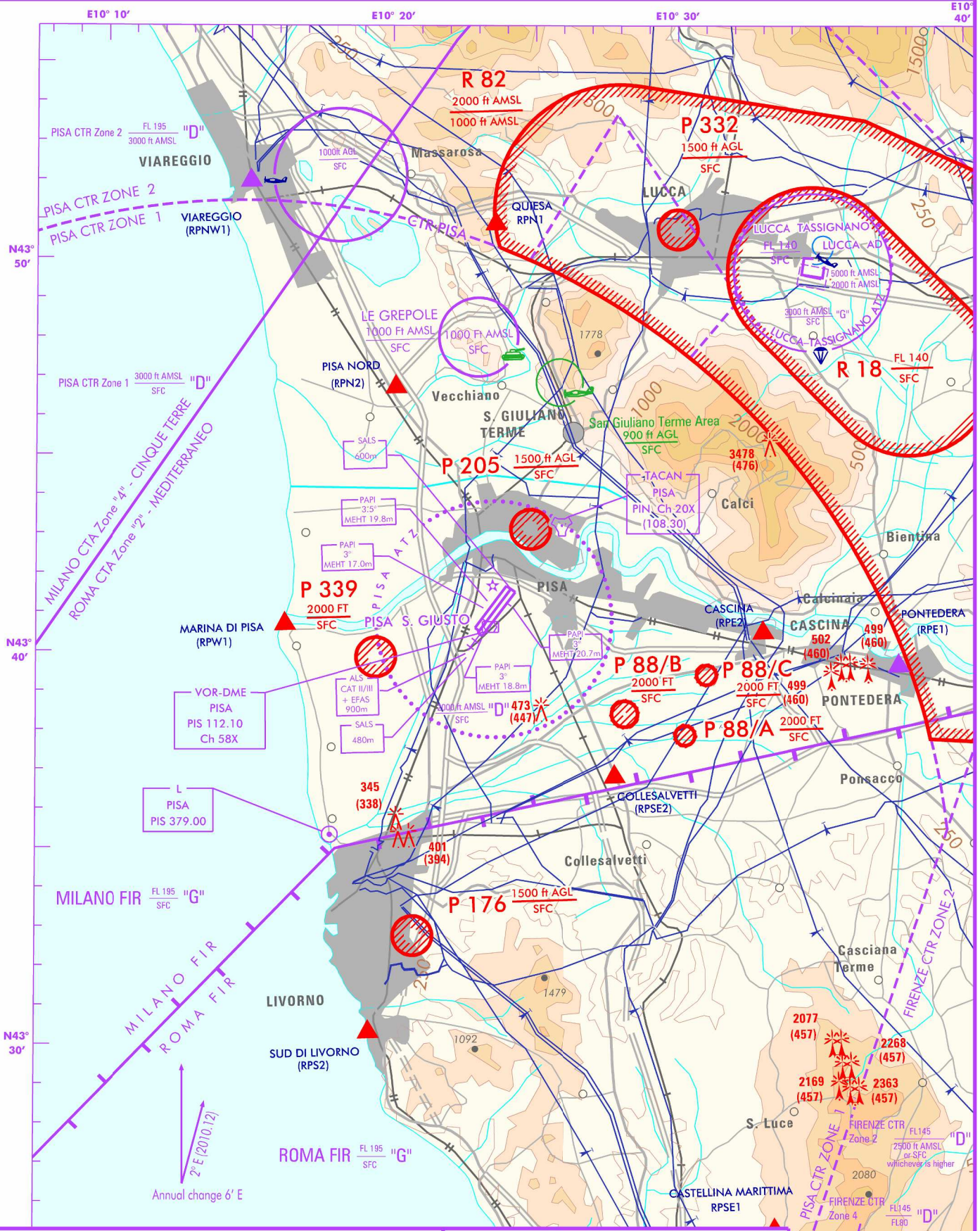
FIS Roma Information	125.750
FIS Milano Information	128.925
PISA Approach	126.080 (124.280)
PISA Tower	119.105 (122.100)
ATIS Pise terminal information	130.065

AD ELEV
6

LIRP

PISA / SAN GIUSTO

CHANGE: ATIS FREQUENCY IMPLEMENTED



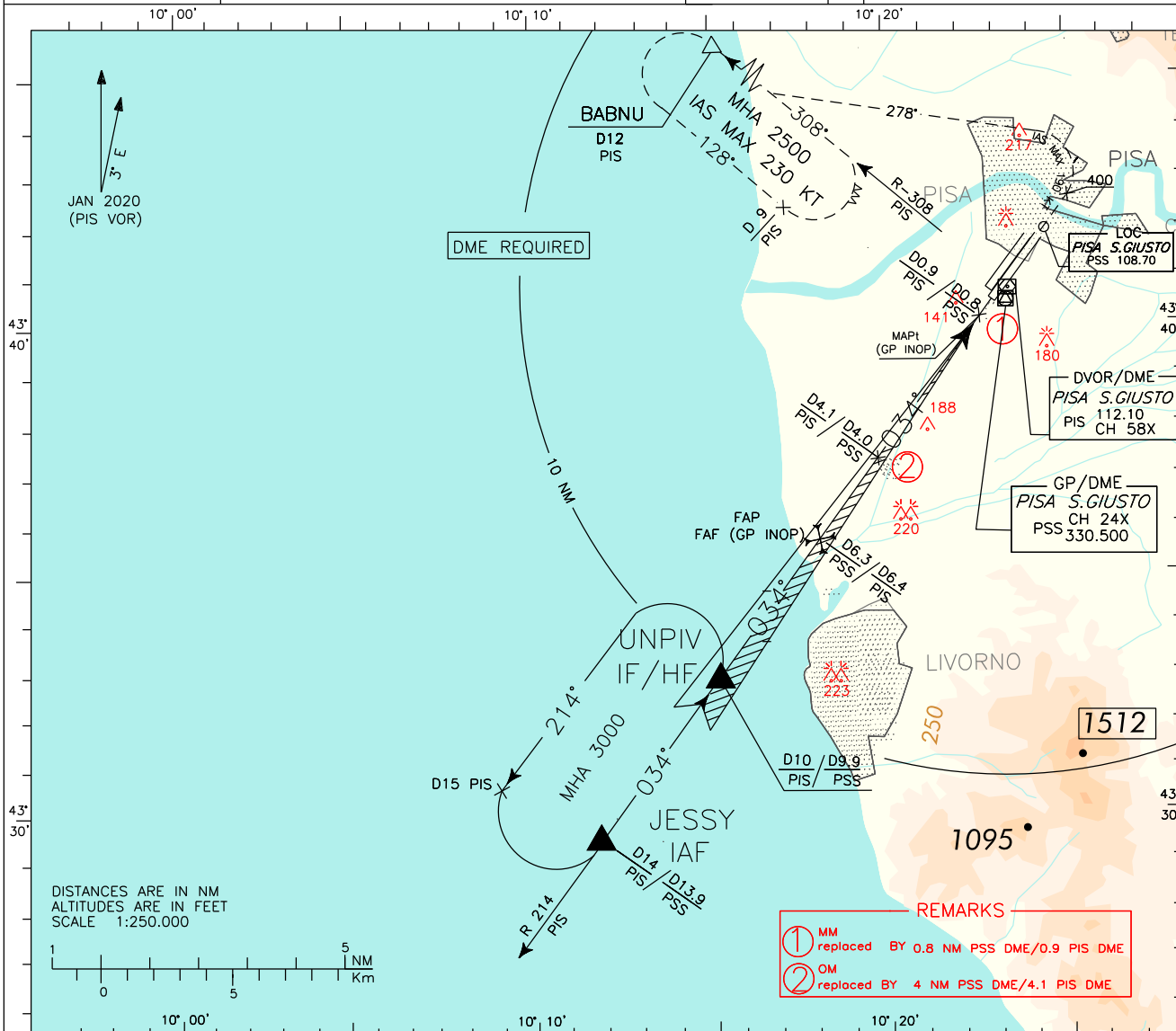
AIRSPACE CLASSIFICATION (See AIP-Italia ENR 1.4)

TRANSITION ALT 6000 ft
Bearings are magnetic.
Elev and Alt in ft.

PISA Pisa APP (126.080)
 TWR Pisa TWR (119.105)
 ATIS Pisa Terminal information (130.065)

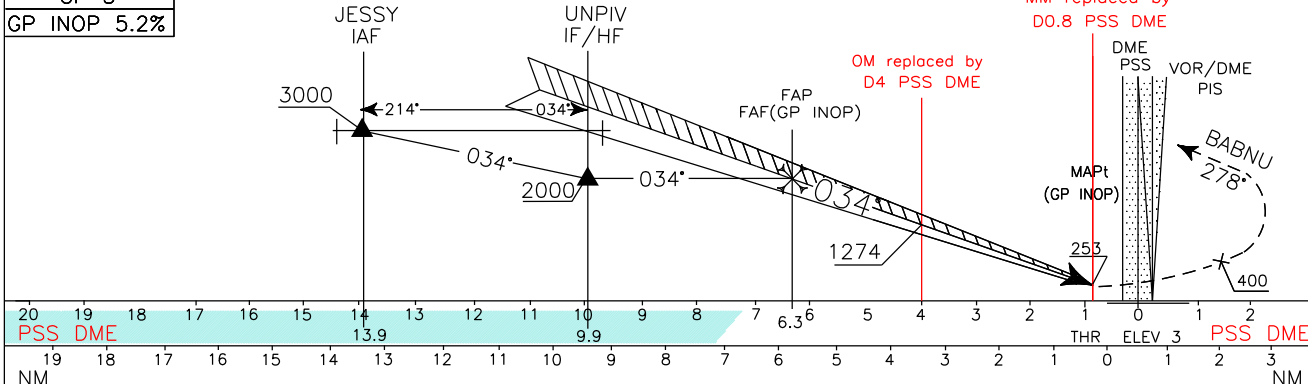
AD ELEV 6
 LIRP PISA/SAN GIUSTO
 ILS or LOC-Z RWY 04R

DOC.8168-ED.6-2014
 CHANGE: ATIS FREQUENCY IMPLEMENTED



TRANSITION ALT 6000
RDH 16.20 M
GP 3°
GP INOP 5.2%

MISSED APPROACH: Proceed on RWY heading climbing to 2500 ft. Passing 400 ft turn left (TR 278° IAS MAX 190KT) not before 1NM PSS DME/1.1PIS DME before THR 04R to join and follow RDL 308 PIS VOR to BABNU holding pattern. Hold between D12 and D9 PIS DME, IAS MAX 230KT, left turn.



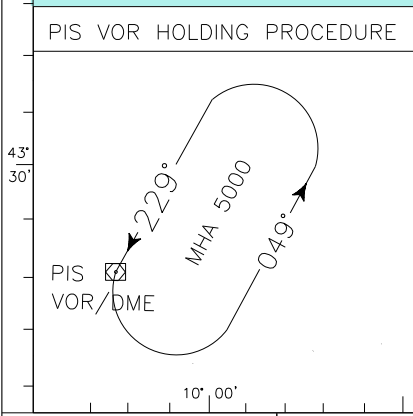
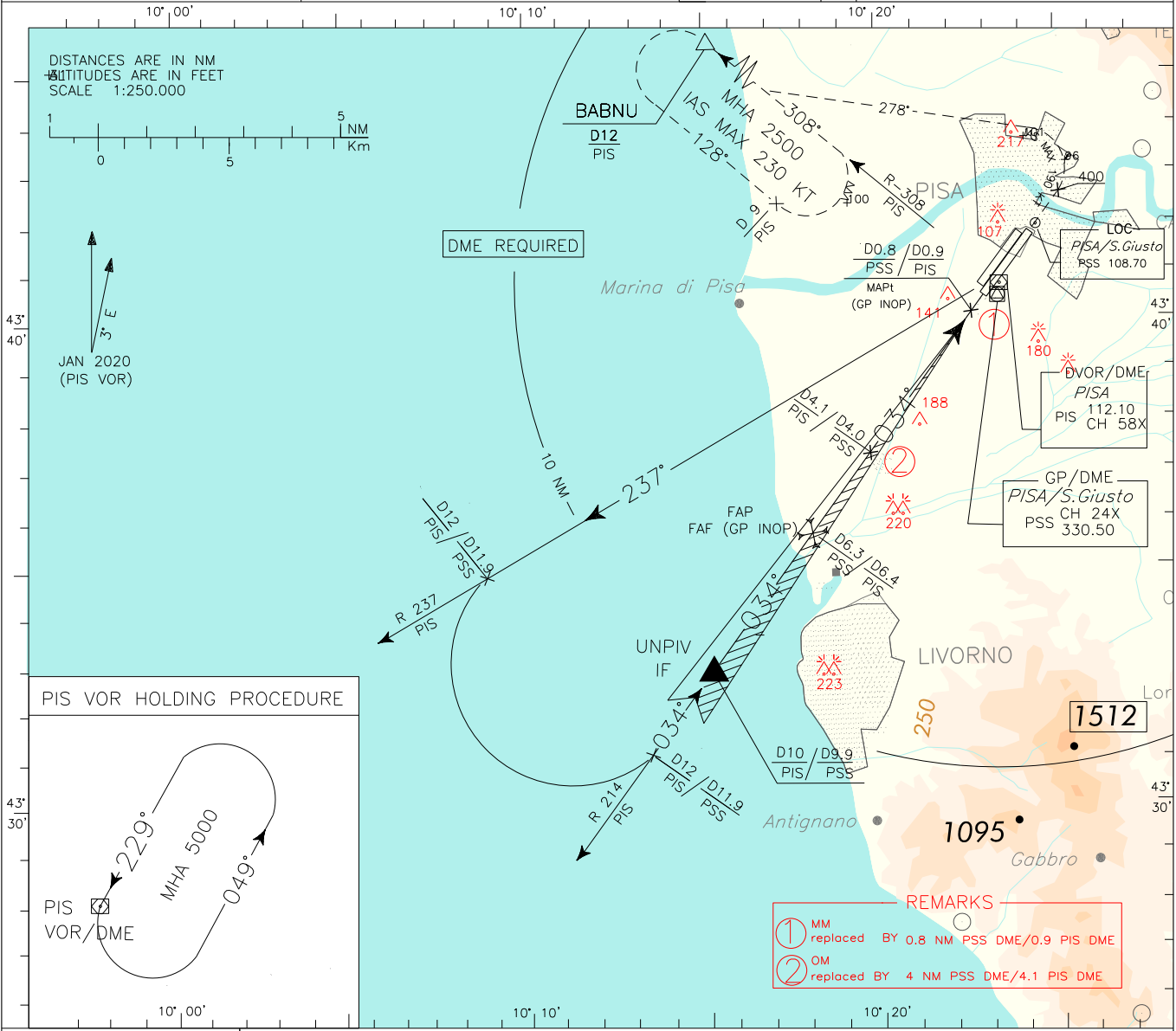
OCA (OCH)		A	B	C	D	GS	FT PER MIN	DME PSS	ALT (HGT)	MNM SECT ALT	
IN APPROACH	ILS CAT I	203 - 200		230 (227)	240 (237)					PIS	VOR
	ILS CAT II	107 - 104		143 (140)	154 (151)	80	420	6	1911 (1908)	9000	
	GP INOP	400 (400)				100	530	5	1591 (1588)	2700	5900
CIRCLING		760 (760)		870 (870) *		120	650	4	1274 (1271)		
						140	740	3	955 (951)		
						160	840	2	636 (633)		
						180	950	1	317 (314)		

Not allowed (circled red)

* IAS MAX 175 kt for ACFT CAT C and D

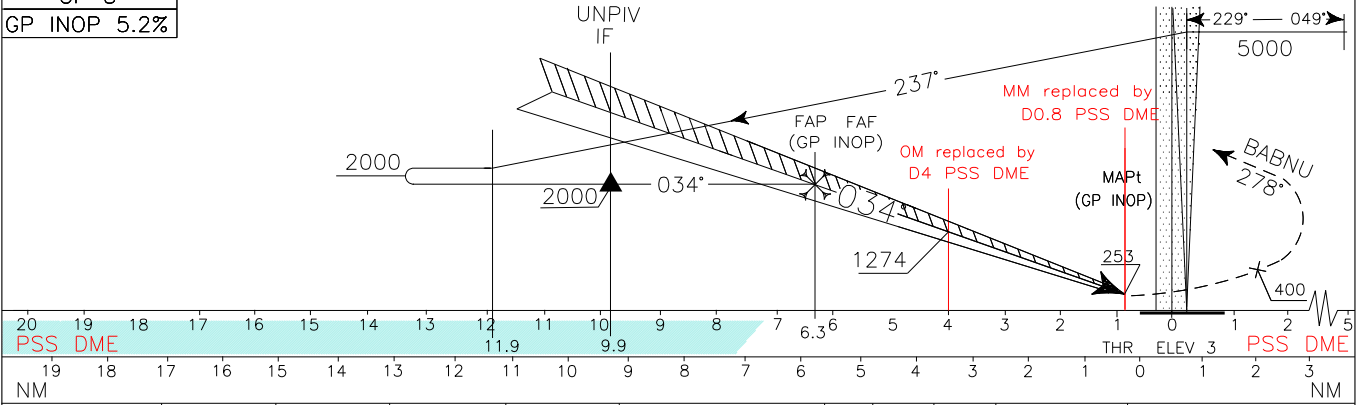
APP	Pisa APP	126.080 (124.280)	AD ELEV	6	LIRP PISA/SAN GIUSTO ILS or LOC-Y RWY 04R
TWR	Pisa TWR	119.105 (122.100)			
ATIS	Pisa	130.065			
	Terminal Information	130.065			

DOC.8168-ED.6-2014
CHANGE: ATIS FREQUENCY IMPLEMENTED



TRANSITION ALT 6000

MISSED APPROACH: Proceed on RWY heading climbing to 2500 ft. Passing 400 ft turn left (TR 278° IAS MAX 190KT) not before 1NM PSS DME/1.1PIS DME before THR 04R to join and follow RDL 308 PIS VOR to BABNU holding pattern. Hold between D12 and D9 PIS DME, IAS MAX 230KT, left turn.

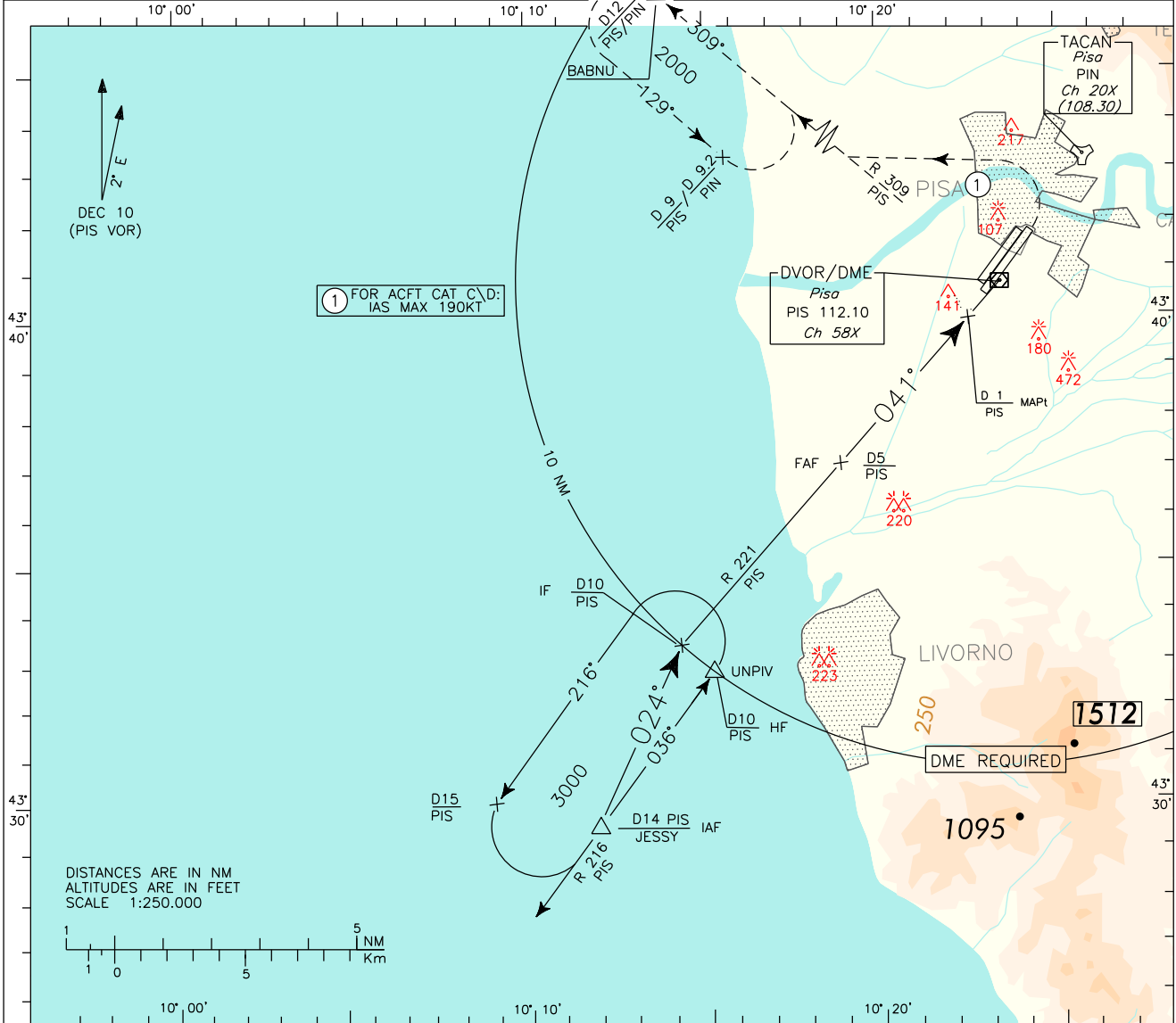


STRAIGHT IN APPROACH	ILS CAT I	203 - 200	230 (227)	240 (237)	<p>Not allowed</p> <p>Circling east of RWY only</p> <p>* IAS MAX 175 kt for ACFT CAT C and D</p>	GS	FT PER MIN	DME PSS	ALT (HGT)	<p>MNM SECT ALT PIS VOR</p>
	ILS CAT II	107 - 104	143 (140)	154 (151)		80	420	6	1911 (1908)	
	GP INOP	400 (400)				100	530	5	1591 (1588)	
CIRCLING		760 (760)	870 (870) *		120	650	4	1274 (1271)		
					140	740	3	955 (951)		
					160	840	2	636 (633)		
					180	950	1	317 (314)		

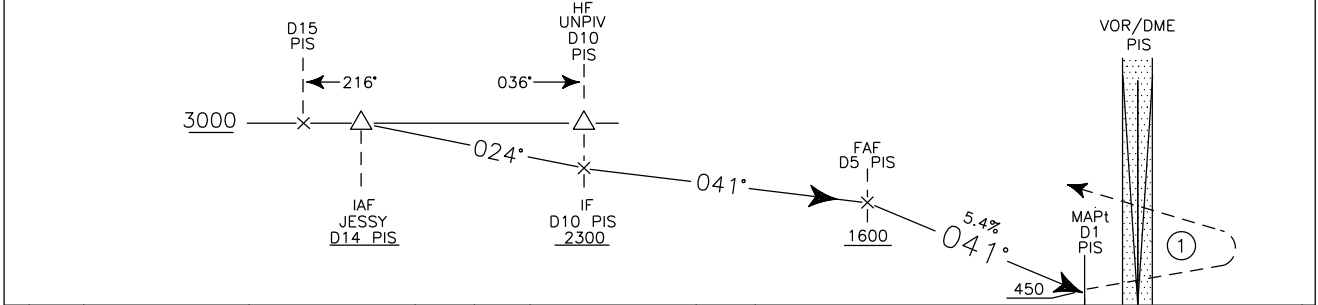
APP	Piso APP	126.080 (124.280)	AD ELEV	6	LIRP PISA/SAN GIUSTO VOR-Z RWY 04R
TWR	Piso TWR	119.105 (122.100)			
ATIS	Piso				
Terminal Information		130.065			

DOC.8168-ED.3-1986

CHANGE: ATIS FREQUENCY IMPLEMENTED



TRANSITION ALT 6000 **MISSED APPROACH:** As soon as practicable, turn left to join RDL 309 climbing to 2000 ft inbound BABNU HF. Hold between 12NM and 9 NM PIS DME (12NM and 9.2NM PIN TACAN), inbound TR 309°, left turn. For ACFT CAT c/d missed approach turn limited to 190 KT IAS.
CAUTION: Pisto monumental area should be avoided.

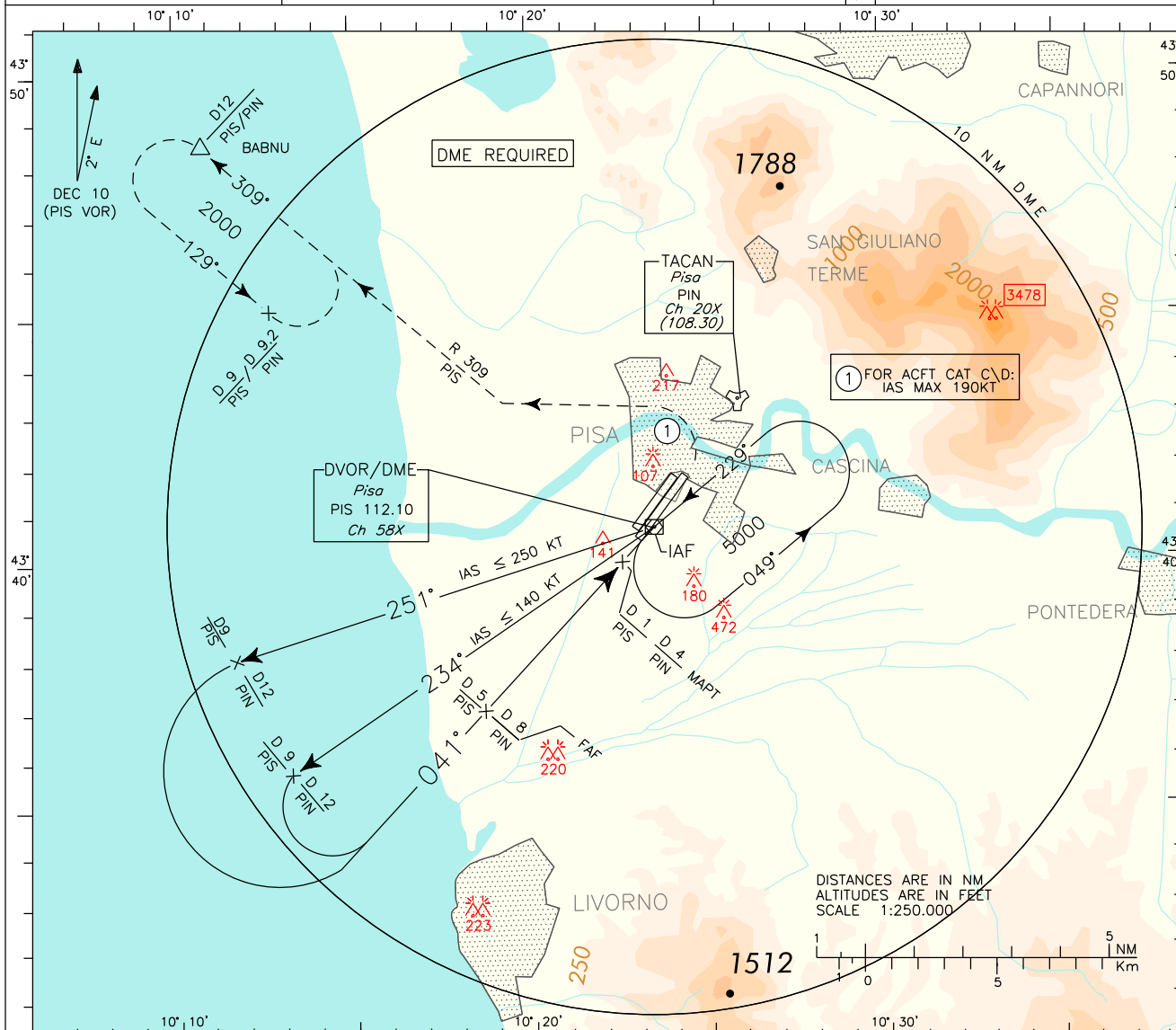


PIS DME										THR		ELEV 3		PIS DME									
20	19	18	17	16	15	14	13	12	11	10	9	8	7	6	5	4	3	2	1	0	1	2	3
NM																							

OCA (OCH)		A	B	C	D	<p>Not allowed</p> <p>Circling east of RWY only</p>	<table border="1"> <thead> <tr> <th>FT PER MIN</th> <th>GS</th> <th>DME PIS NM</th> <th>ALT (HGT) ft</th> </tr> </thead> <tbody> <tr><td>1040</td><td>190</td><td>5</td><td>1600 (1600)</td></tr> <tr><td>930</td><td>170</td><td>4</td><td>1270 (1270)</td></tr> <tr><td>820</td><td>150</td><td>3</td><td>940 (940)</td></tr> <tr><td>710</td><td>130</td><td>2</td><td>610 (610)</td></tr> <tr><td>600</td><td>110</td><td>1</td><td>280 (280)</td></tr> <tr><td>490</td><td>90</td><td></td><td></td></tr> <tr><td>380</td><td>70</td><td></td><td></td></tr> </tbody> </table>	FT PER MIN	GS	DME PIS NM	ALT (HGT) ft	1040	190	5	1600 (1600)	930	170	4	1270 (1270)	820	150	3	940 (940)	710	130	2	610 (610)	600	110	1	280 (280)	490	90			380	70			MSA PIS VOR	
FT PER MIN	GS	DME PIS NM	ALT (HGT) ft																																						
1040	190	5	1600 (1600)																																						
930	170	4	1270 (1270)																																						
820	150	3	940 (940)																																						
710	130	2	610 (610)																																						
600	110	1	280 (280)																																						
490	90																																								
380	70																																								
STRAIGHT IN APPROACH	VOR	450 (450)																																							
	CIRCLING	760 (760)		870 (870) *																																					
						* IAS MAX 175 kt for ACFT CAT C and D																																			

APP	Pisa APP	126.080 (124.280)	AD ELEV	6	LIRP	PISA/SAN GIUSTO
TWR	Pisa TWR	119.105 (122.100)			VOR-Y	RWY 04R
ATIS	Pisa Terminal Information 130.065					

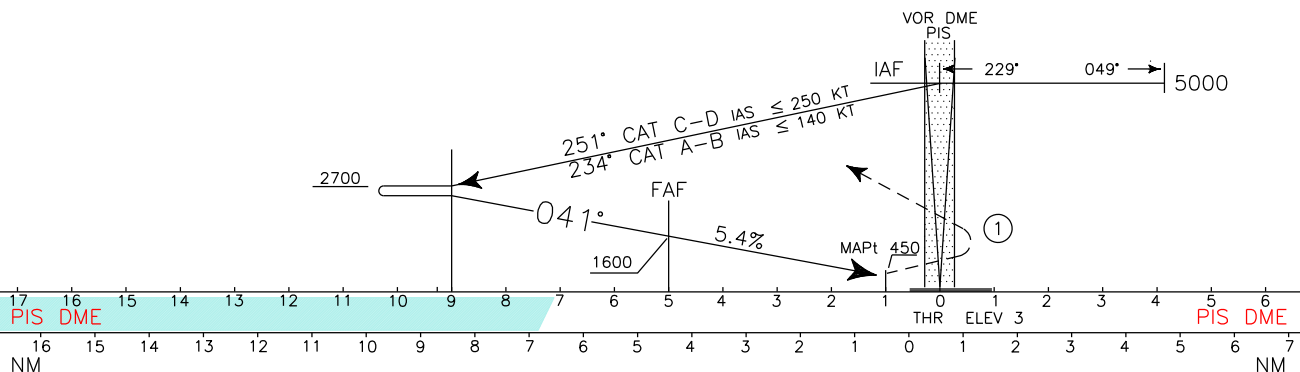
DOC.8168-ED.3-1986
CHANGE: ATIS FREQUENCY IMPLEMENTED



TRANSITION ALT 6000

MISSED APPROACH:

As soon as practicable, turn left to join RDL 309 climbing to 2000 ft inbound BABNU HF. Hold between 12NM and 9 NM PIS DME (12NM and 9.2NM PIN TACAN), inbound TR 309°, left turn. For ACFT CAT c/d missed approach turn limited to 190 KT IAS. CAUTION: Pisa monumental area should be avoided.



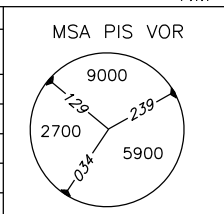
OCA (OCH)		A	B	C	D
STRAIGHT IN APPROACH	VOR+DME	450 (450)			
CIRCLING		760 (760)		870 (870) *	

Not allowed

Circling east of RWY only

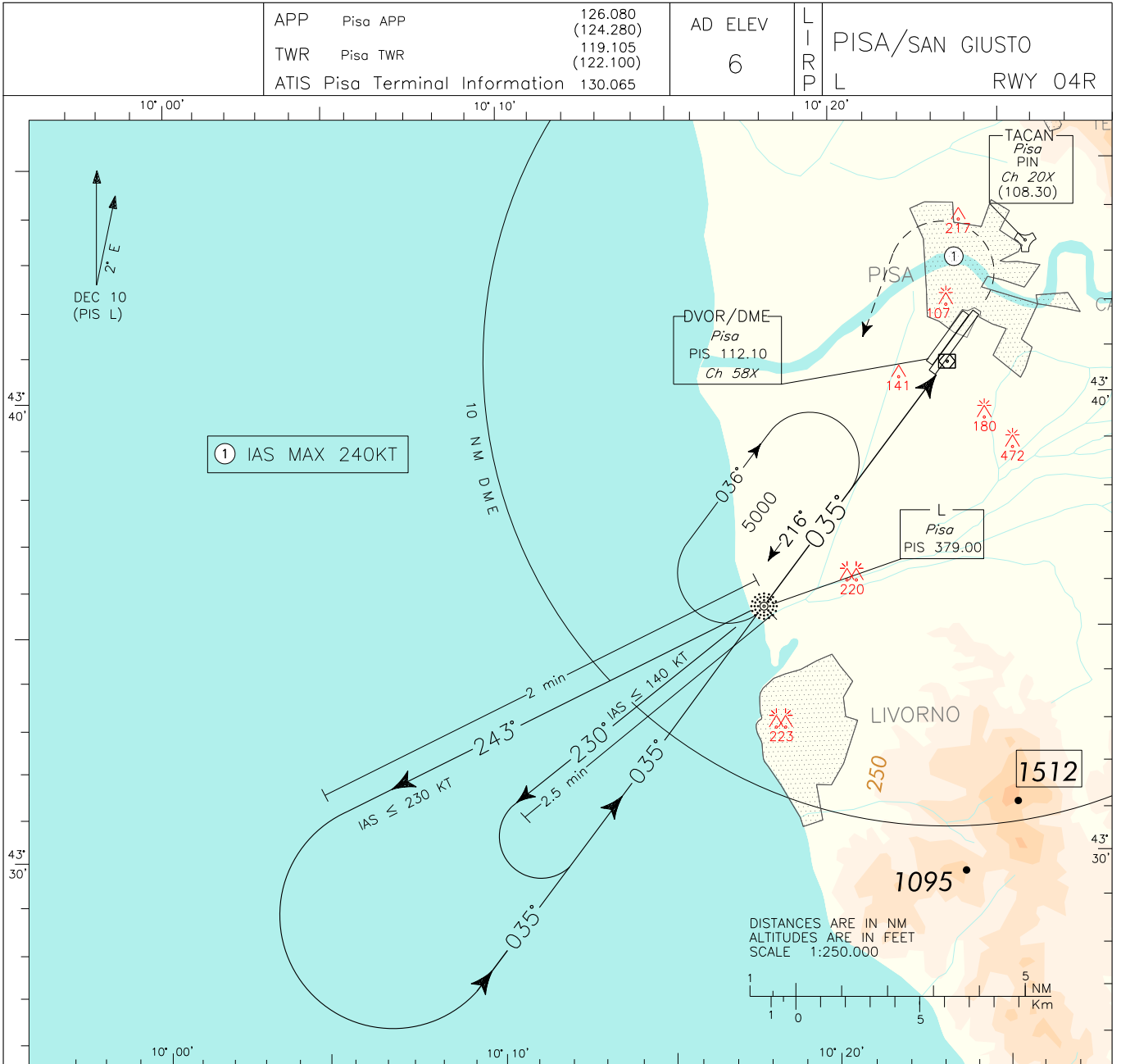
* IAS MAX 175 kt for ACFT CAT C and D

FT PER MIN	GS	DME PIS NM	ALT (HGT) ft
1040	190	5	1600 (1600)
930	170	4	1270 (1270)
820	150	3	940 (940)
710	130	2	610 (610)
600	110	1	280 (280)
490	90		
380	70		



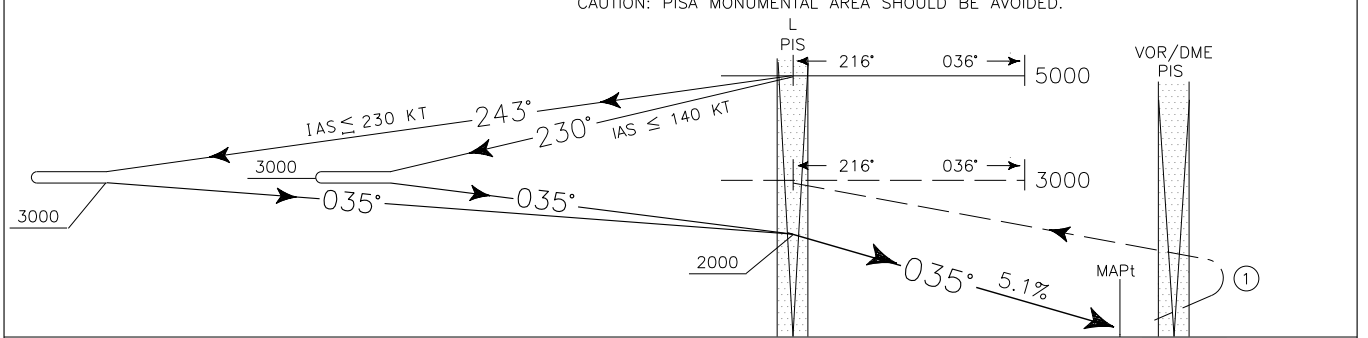
DOC.8168-ED.3-1986

CHANGE: ATIS FREQUENCY IMPLEMENTED



TRANSITION ALT 6000

MISSED APPROACH: Turn left as soon practicable bound to PIS L climbing at 3000 ft. Missed approach speed restricted to 240 KT IAS MAX until after turn. Holding 3000 ft IAS ≤ 230 KT. CAUTION: PISA MONUMENTAL AREA SHOULD BE AVOIDED.

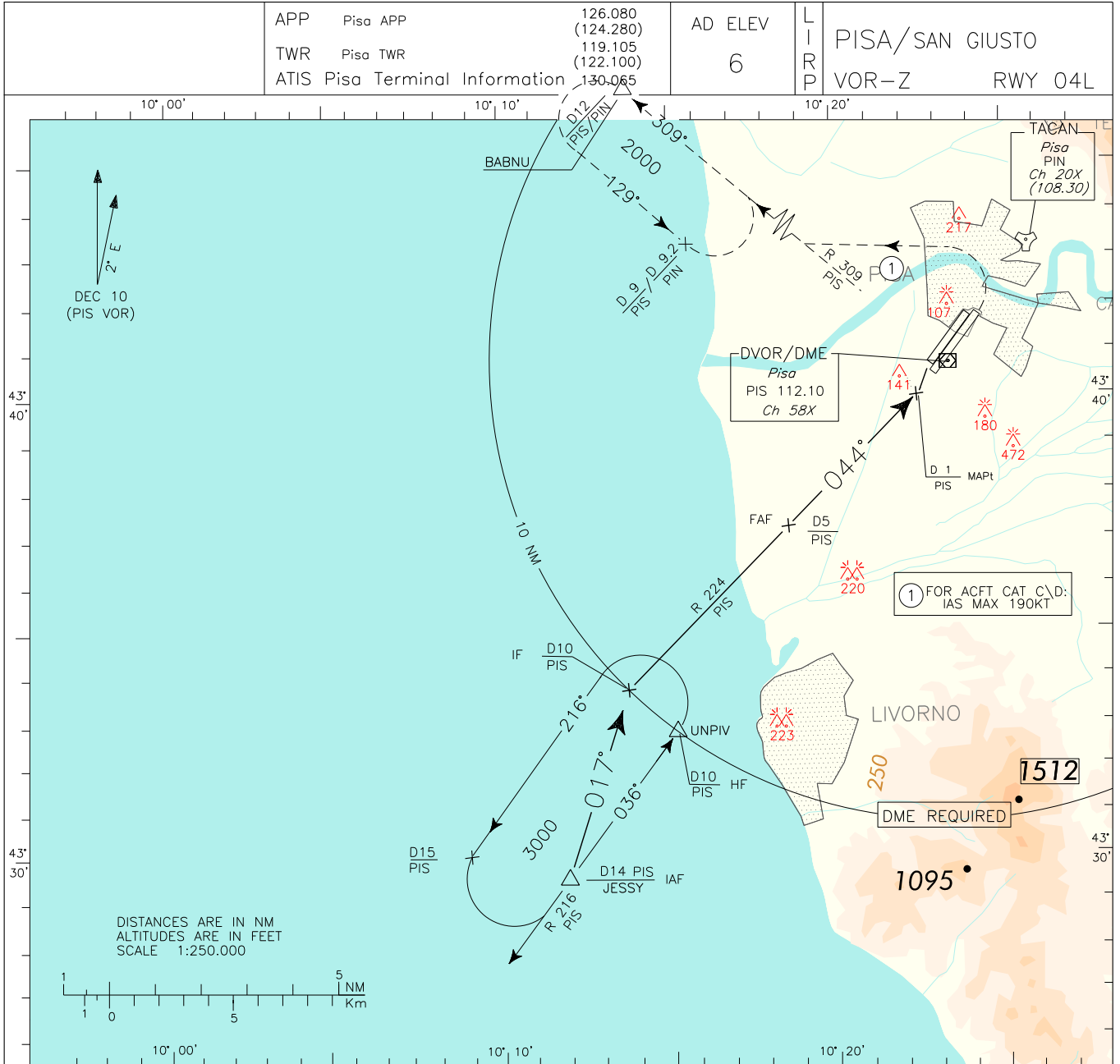


19 18 17 16 15 14 13 12 11 10 9 8 7 6 5 4 3 2 1 0 1 2 3					NM					
OCA (OCH)					A	B	C	D		

STRAIGHT IN APPROACH	L	600 (597)		760 (757)	<p>Not allowed</p> <p>Circling east of RWY only</p> <p>* IAS MAX 175 kt for ACFT CAT C and D</p>	FT PER MIN	GS	L-MAPt	<p>MSA L PIS</p>
						378	70	5 : 01	
						540	100	3 : 36	
						702	130	2 : 46	
						864	160	2 : 15	
CIRCLING		760 (760)		870 (870) *		1026	190	1 : 53	

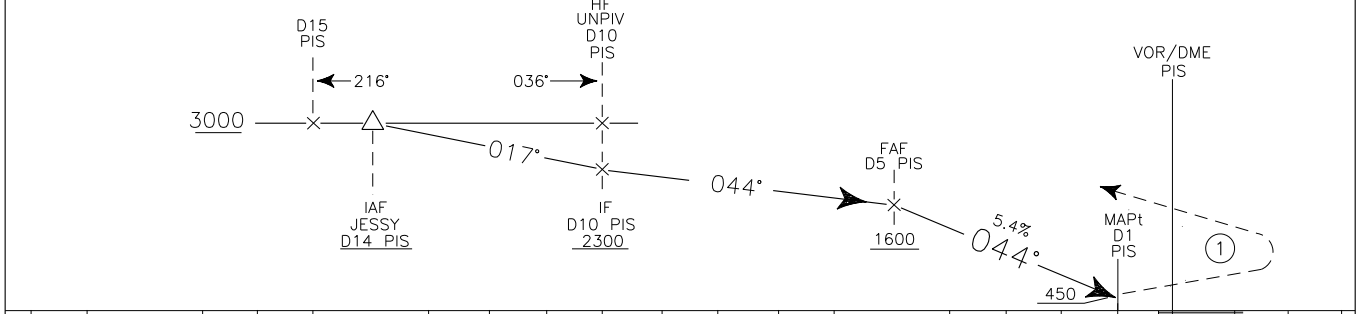
DOC.8168-ED.3-1986

CHANGE: ATIS FREQUENCY IMPLEMENTED



TRANSITION ALT 6000

MISSED APPROACH: As soon as practicable, turn left to join RDL 309 climbing to 2000 ft inbound BABNU HF. Hold between 12NM and 9 NM PIS DME (12NM and 9.2NM PIN TACAN), inbound TR 309°, left turn. For ACFT CAT c/d missed approach turn limited to 190 KT IAS. CAUTION: Pisa monumental area should be avoided.



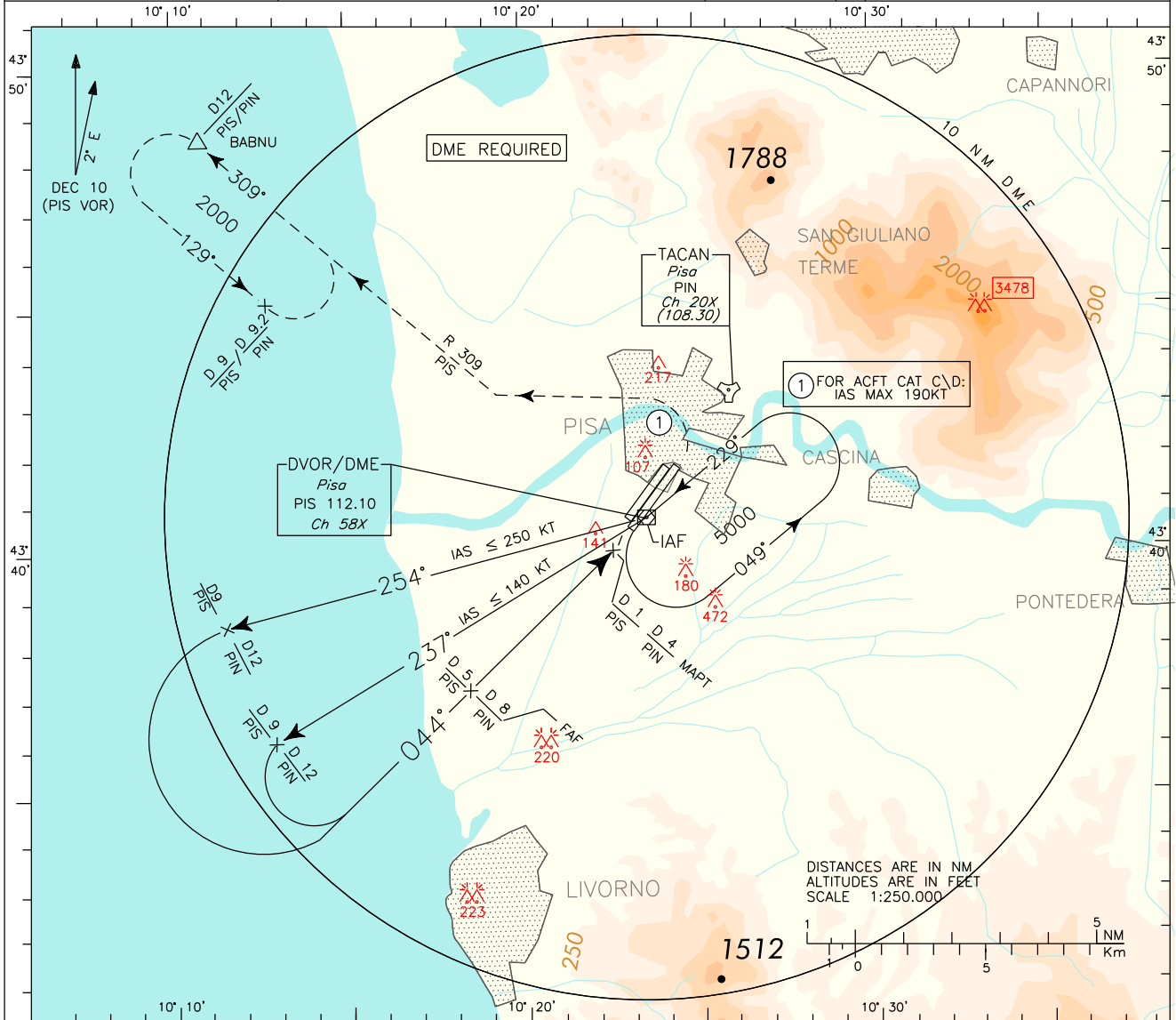
20	19	18	17	16	15	14	13	12	11	10	9	8	7	6	5	4	3	2	1	0	1	2	3
PIS DME																							
20	19	18	17	16	15	14	13	12	11	10	9	8	7	6	5	4	3	2	1	0	1	2	3
NM																							

OCA (OCH)		A	B	C	D	<p>Not allowed</p> <p>Circle east of RWY only</p> <p>* IAS MAX 175 kt for ACFT CAT C and D</p>	<table border="1"> <tr> <th>FT PER MIN</th> <th>GS</th> <th>DME PIS NM</th> <th>ALT (HGT) ft</th> </tr> <tr> <td>1040</td> <td>190</td> <td>5</td> <td>1600 (1600)</td> </tr> <tr> <td>930</td> <td>170</td> <td>4</td> <td>1270 (1270)</td> </tr> <tr> <td>820</td> <td>150</td> <td>3</td> <td>940 (940)</td> </tr> <tr> <td>710</td> <td>130</td> <td>2</td> <td>610 (610)</td> </tr> <tr> <td>600</td> <td>110</td> <td>1</td> <td>280 (280)</td> </tr> <tr> <td>490</td> <td>90</td> <td></td> <td></td> </tr> <tr> <td>380</td> <td>70</td> <td></td> <td></td> </tr> </table>	FT PER MIN	GS	DME PIS NM	ALT (HGT) ft	1040	190	5	1600 (1600)	930	170	4	1270 (1270)	820	150	3	940 (940)	710	130	2	610 (610)	600	110	1	280 (280)	490	90			380	70			<p>MSA PIS VOR</p>
FT PER MIN	GS	DME PIS NM	ALT (HGT) ft																																					
1040	190	5	1600 (1600)																																					
930	170	4	1270 (1270)																																					
820	150	3	940 (940)																																					
710	130	2	610 (610)																																					
600	110	1	280 (280)																																					
490	90																																							
380	70																																							
STRAIGHT IN APPROACH	VOR	450 (450)																																						
	CIRCLING	760 (760)		870 (870) *																																				

APP	Pisa APP	126.080 (124.280)	AD ELEV	6	LIRP	PISA/SAN GIUSTO
TWR	Pisa TWR	119.105 (122.100)			VOR-Y	RWY 04L
ATIS	Pisa Terminal Information 130.065					

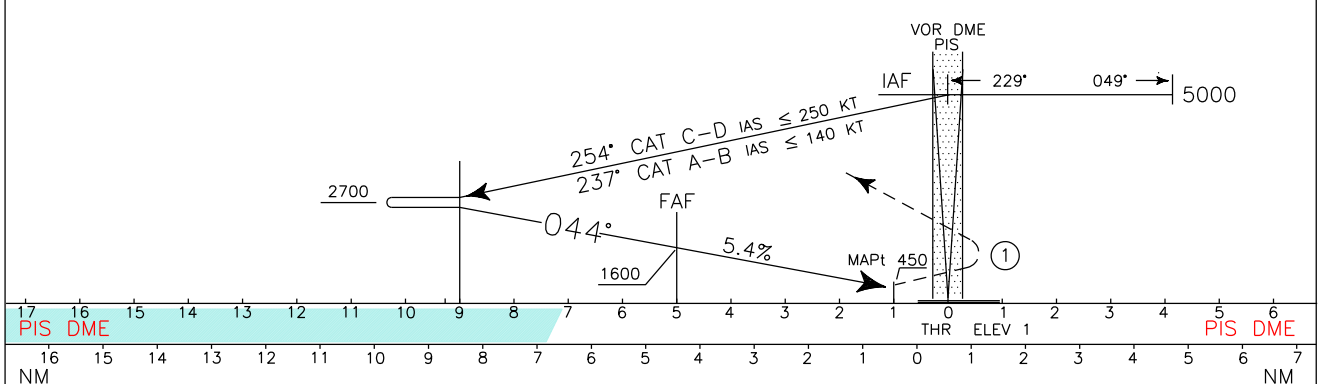
DOC.8168-ED.3-1986

CHANGE: ATIS FREQUENCY IMPLEMENTED



TRANSITION ALT 6000

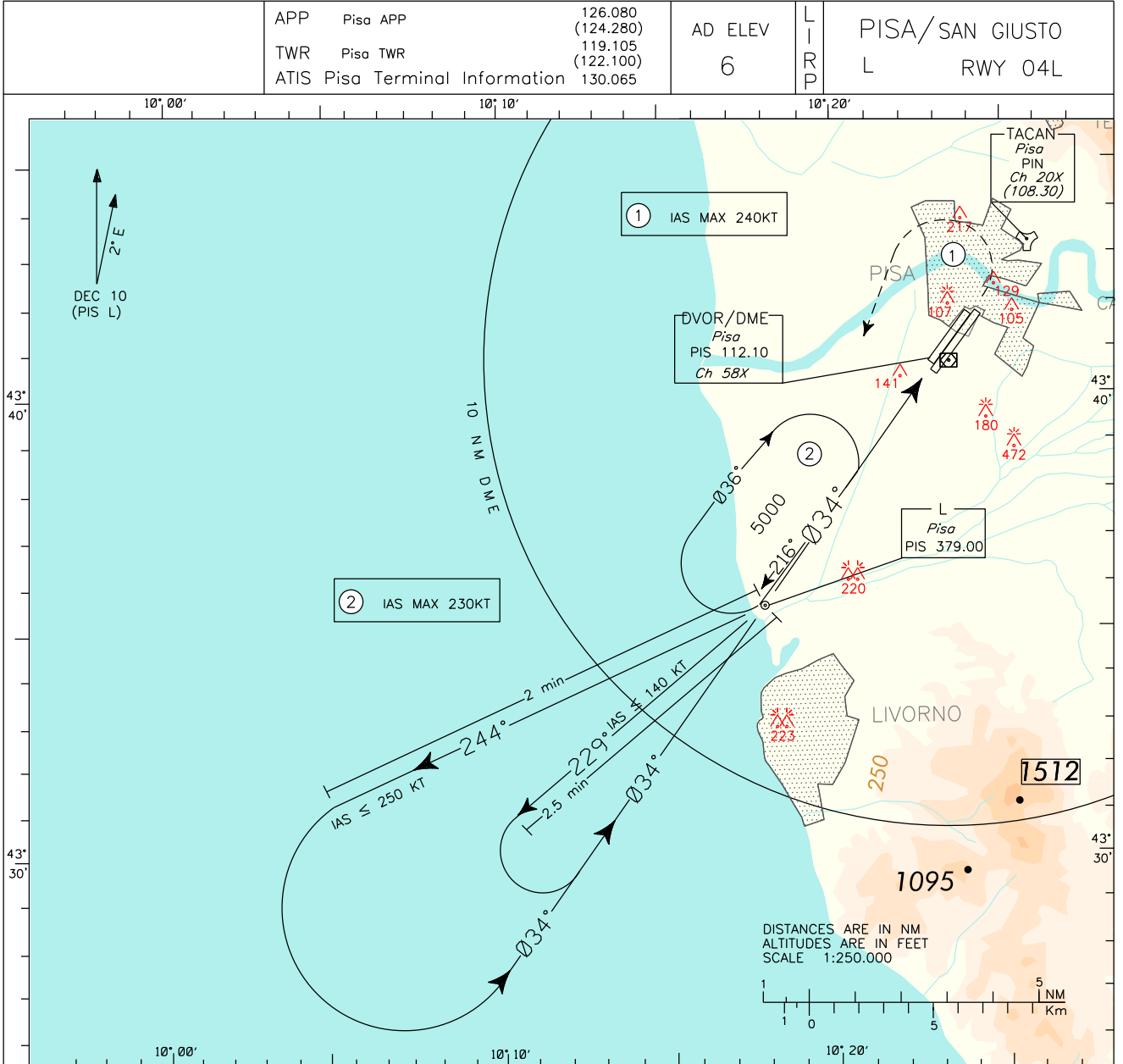
MISSED APPROACH: As soon as practicable, turn left to join RDL 309 climbing to 2000 ft inbound BABNU HF. Hold between 12NM and 9 NM PIS DME (12NM and 9.2NM PIN TACAN), inbound TR 309°, left turn. For ACFT CAT c/d missed approach turn limited to 190 KT IAS. CAUTION: Pisa monumental area should be avoided.



PIS DME		NM										PIS DME	
OCA (OCH)		A	B	C	D	Not allowed		FT PER MIN	GS	DME PIS NM	ALT (HGT) ft	MSA PIS VOR	
STRAIGHT IN APPROACH	VOR+DME	450 (450)				* IAS MAX 175 kt for ACFT CAT C and D	1040	190	5	1600 (1600)			
							930	170	4	1270 (1270)			
							820	150	3	940 (940)			
							710	130	2	610 (610)			
CIRCLING		760 (760)		870 (870) *		600	110	1	280 (280)				
						490	90						
						380	70						

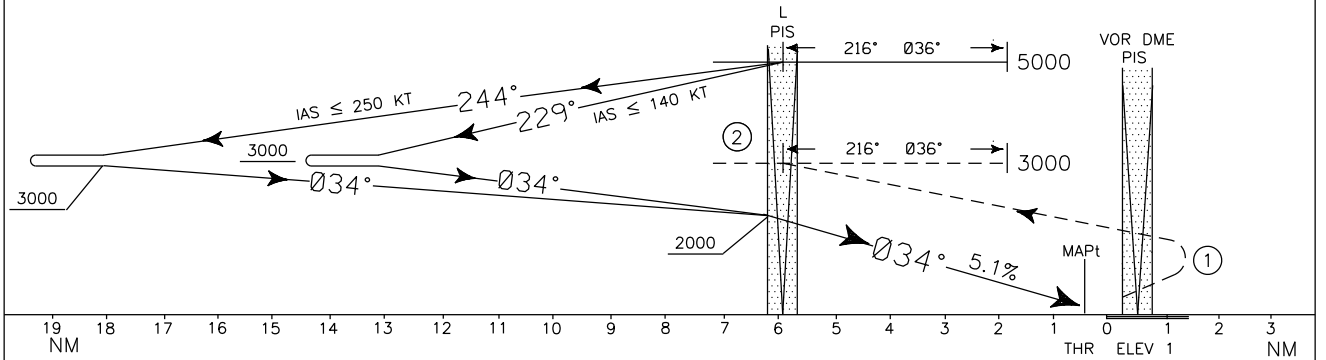
DOC.8168-ED.3-1986

CHANGE: ATIS FREQUENCY IMPLEMENTED



TRANSITION ALT 6000

MISSED APPROACH: Turn left as soon practicable bound to PIS L climbing to 3000 Ft. Missed approach speed restricted to 240 KT IAS MAX until after turn. Holding 3000 Ft IAS ≤ 230 KT. CAUTION: Pisa monumental area should be avoided.



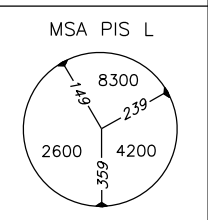
OCA (OCH)		A	B	C	D
STRAIGHT IN APPROACH	L	820 (819)			
CIRCLING		820 (820)		* 870 (870)	

Not allowed

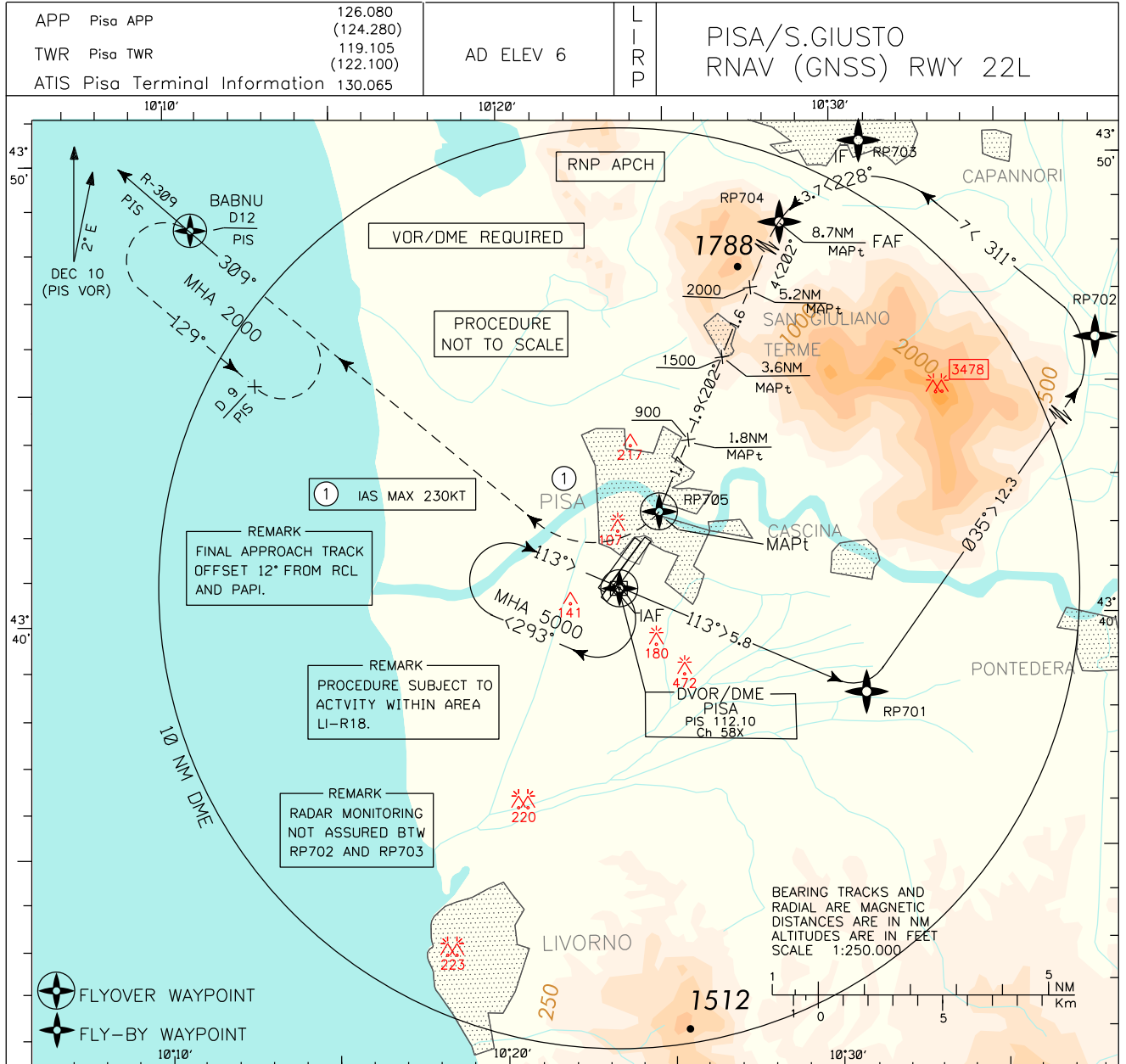
Circling east of RWY only

* IAS MAX 175 kt for ACFT CAT C and D

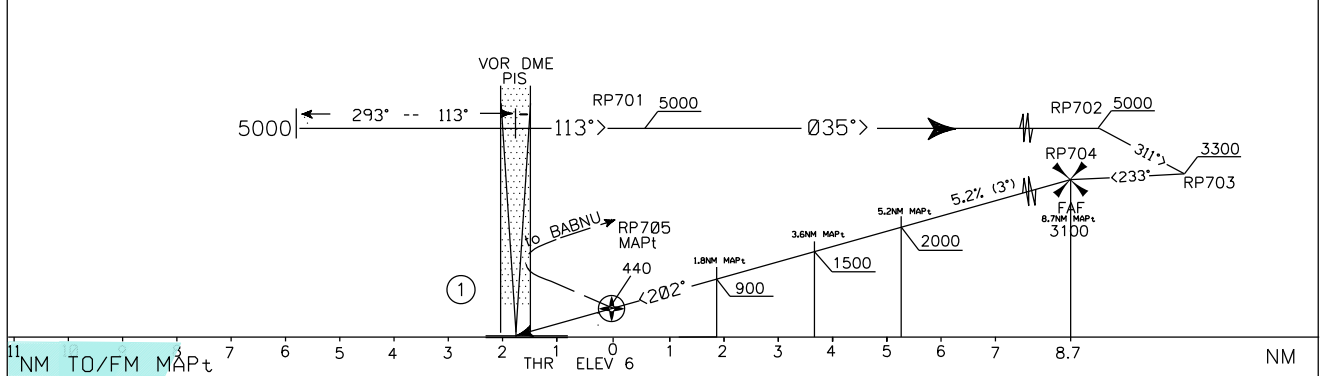
FT PER MIN	GS	NDB-MAPt
995	190	6.39 NM
830	160	2 : 00
675	130	2 : 24
520	100	2 : 57
363	70	3 : 50
		5 : 29



DOC-8168 VOL. II ED 2014
CHANGE: ATIS FREQUENCY IMPLEMENTED



TRANSITION ALT 6000 MISSED APPROACH: As soon as practicable, turn right to join R-309 climbing to 2000 ft inbound BABNU holding pattern, IAS max 230 KT. Hold between 12 and 9 NM DME PIS VORDME, inbound TR 309°, left turn.



OCA (OCH)		A	B	C	D	<p>Not allowed</p> <p>Circling east of both RWY</p>	<table border="1"> <tr> <th>FT PER MIN</th> <th>GS</th> <th>DIST MAPt</th> <th>ALT</th> </tr> <tr> <td>1008</td> <td>190</td> <td>8.7</td> <td>3100</td> </tr> <tr> <td>902</td> <td>170</td> <td>8</td> <td>2886</td> </tr> <tr> <td>796</td> <td>150</td> <td>7</td> <td>2568</td> </tr> <tr> <td>690</td> <td>130</td> <td>6</td> <td>2250</td> </tr> <tr> <td>584</td> <td>110</td> <td>5.2</td> <td>2000</td> </tr> <tr> <td>478</td> <td>90</td> <td>3.6</td> <td>1500</td> </tr> <tr> <td>371</td> <td>70</td> <td>1.8</td> <td>900</td> </tr> <tr> <td></td> <td></td> <td>1</td> <td>660</td> </tr> </table>	FT PER MIN	GS	DIST MAPt	ALT	1008	190	8.7	3100	902	170	8	2886	796	150	7	2568	690	130	6	2250	584	110	5.2	2000	478	90	3.6	1500	371	70	1.8	900			1	660
FT PER MIN	GS	DIST MAPt	ALT																																								
1008	190	8.7	3100																																								
902	170	8	2886																																								
796	150	7	2568																																								
690	130	6	2250																																								
584	110	5.2	2000																																								
478	90	3.6	1500																																								
371	70	1.8	900																																								
		1	660																																								
STRAIGHT IN APPROACH	RNAV	440 (434)																																									
CIRCLING		760 (760)	870 (870) IAS MAX 175 kt for ACFT CAT C and D																																								

TABULAR DESCRIPTION

RNAV (GNSS) RWY22L

Serial Number	Path Terminator	Fix Identifier	Fly Over	Course /Track Mag	Turn Direction	Altitude (ft)	Speed Limit (kt)	REC NAV	Bearing Distance from Navaid (NM)	Distance from MAPT	Navigation performance	Remarks
010	IF	PIS	-	-	-	+5000	-	PIS VOR/DME	-	-	-	IAF
020	TF	RP701	-	113°	-	+5000	-	-	-	-	-	-
030	TF	RP702	-	035°	L	+5000	-	-	-	-	-	-
040	TF	RP703	-	311°	L	+3300	-	-	-	-	-	IF
050	TF	RP704	-	228°	L	+3100	-	-	023°/10.7	8.7	-	FAF
060	-	-	-	202°	L	+2000	-	-	024°/7.2	5.2	-	SDF
070	-	-	-	202°	-	+1500	-	-	025°/5.6	3.6	-	SDF
080	-	-	-	202°	-	+900	-	-	026°/3.7	1.8	-	SDF
090	TF	RP705	Y	202°	-	+440	-	-	026°/2	0.0	-	MAPT
100	CF	BABNU	Y	309°	R	+2000	230	PIS VOR/DME	309°/12	-	-	MAHF
110	HM	BABNU	Y	309°	L	+2000	-	PIS VOR/DME	309°/12	-	CONVENTIONAL	-
120	HM	PIS	Y	113°	R	+5000	-	PIS VOR/DME	-	-	CONVENTIONAL	-

Pisa/S.Giusto RNAV (GNSS) RWY22L waypoint table formatted according ARINC 424 standards

Waypoint Identifier	Coordinates
RP701	43°38'04.29"N, 010°30'41.59"E
RP702	43°47'49.06"N, 010°41'02.76"E
RP703	43°52'35.82"N, 010°33'59.36"E
RP704	43°50'14.23"N, 010°29'57.90"E
RP705	43°42'18.32"N, 010°24'55.41"E