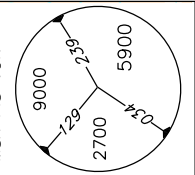


STAR
VOR

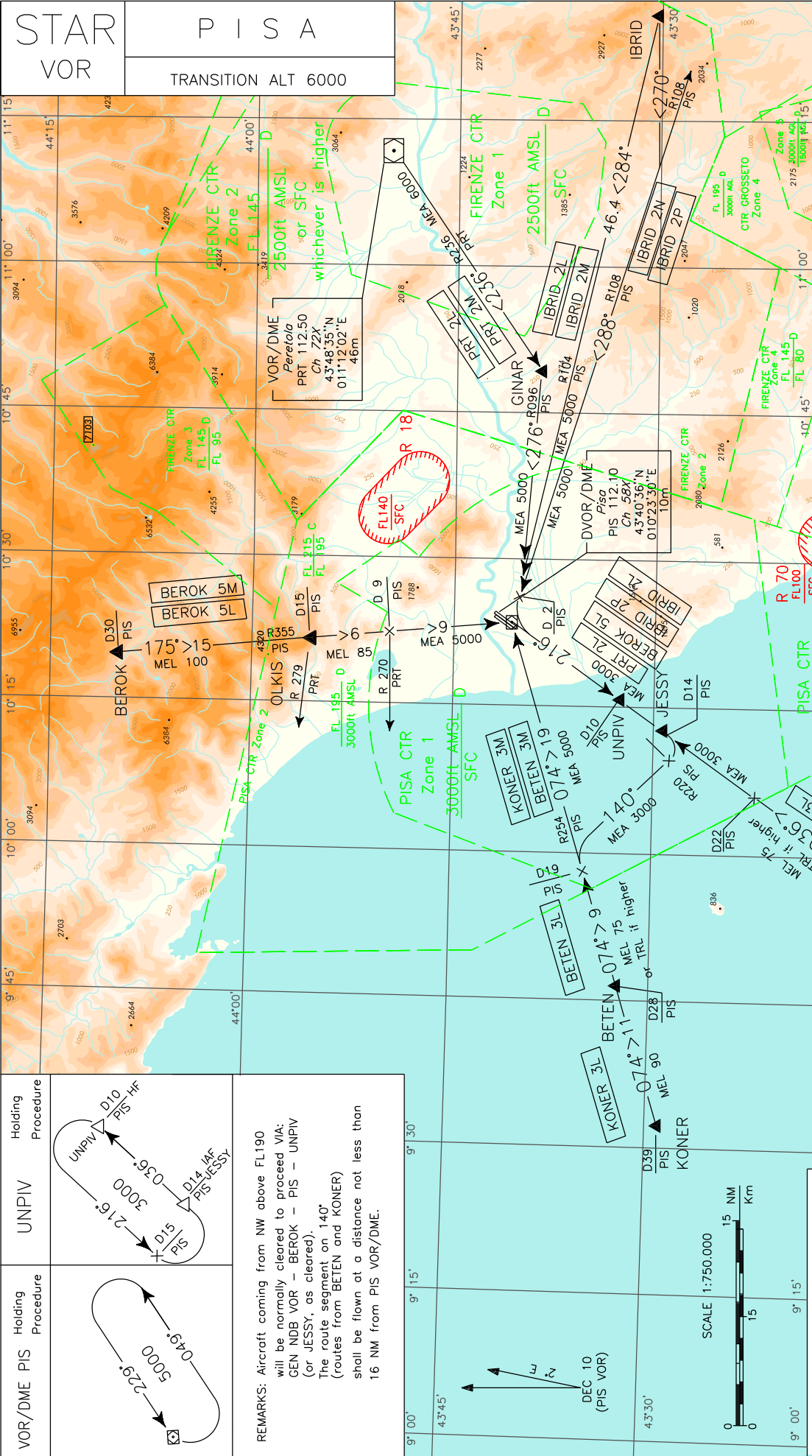
P I S A

TRANSITION ALT 6000

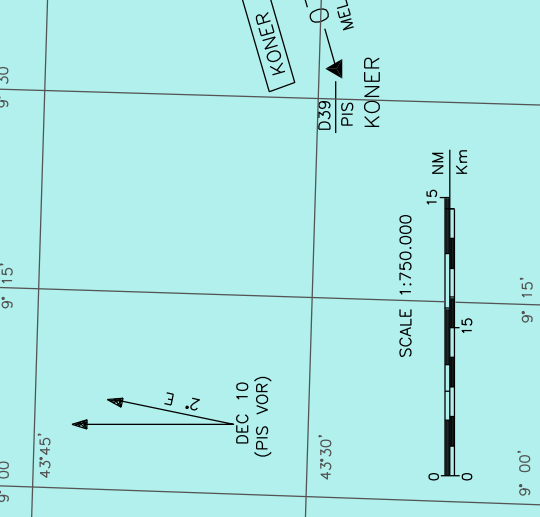


FREQUENCIES	
APP Pisa APP	126.080 (124.280)
TWR Pisa TWR	119.105 (122.100)
ATIS	Pisa Terminal Information

CHANGE: ATIS FREQUENCY IMPLEMENTED



REMARKS: Aircraft coming from NW above FL190 will be normally cleared to proceed VIA: GEN NDB VOR - BEROK - PIS - UNPIV (or JESSY, as cleared). The route segment on 140° (routes from BETEN and KONER) shall be flown at a distance not less than 16 NM from PIS VOR/DME.



BEROK 5M

BEROK – TR 175° (RDL 355 PIS VOR) – OLKIS – TR 175° (RDL 355 PIS VOR) – PIS VOR/DME.

MEL/MEA: BEROK – OLKIS: FL 100; OLKIS – RDL 355/9 NM PIS VOR/DME (INT RDL 355 PIS VOR/RDL 270 PRT VOR): FL 85; RDL 355/9NM PIS VOR/DME (INT RDL 355 PIS VOR/RDL 270 PRT VOR) – PIS VOR/DME: 5000 FT

BEROK 5L

BEROK – TR 175° (RDL 355 PIS VOR) – OLKIS – TR 175° (RDL 355 PIS VOR) – PIS VOR/DME – TR 216° (RDL 216 PIS VOR) – UNPIV (o JESSY, se autorizzati).

MEL/MEA: BEROK – OLKIS: FL 100; OLKIS – RDL 355/9 NM PIS VOR/DME (INT RDL 355 PIS VOR/RDL 270 PRT VOR): FL 85; RDL 355/9 NM PIS VOR/DME (INT RDL 355 PIS VOR/RDL 270 PRT VOR) – PIS VOR/DME: 5000 FT; PIS VOR/DME – UNPIV (o/or JESSY): 3000 FT

BEROK 5M

BEROK – TR 175° (RDL 355 PIS VOR) – OLKI S – TR 175° (RDL 355 PIS VOR) – PIS VOR/DME.

BEROK 5L

BEROK – TR 175° (RDL 355 PIS VOR) – OLKI S – TR 175° (RDL 355 PIS VOR) – PIS VOR/DME – TR 216° (RDL 216 PIS VOR) – UNPIV (or JESSY, as cleared).

KONER 3L

KONER – TR 074° (RDL 254 PIS VOR) – BETEN – TR 074° (RDL 254 PIS VOR) fino a 19 NM PIS DME, quindi virare a destra su TR 140°, indi intercettando RDL 220 PIS VOR virare a sinistra per il punto UNPIV (o JESSY, se autorizzati).

MEL/MEA: KONER – BETEN: FL 90; BETEN – RDL 254/19 NM PIS VOR/DME: FL 75 (or TRL if higher); RDL 254/19 NM PIS VOR/DME – UNPIV (o/or JESSY): 3000 FT

KONER 3L

KONER – TR 074° (RDL 254 PIS VOR) – BETEN – TR 074° (RDL 254 PIS VOR) until 19 NM PIS DME, then turn right on TR 140°, then intercepting RDL 220 PIS VOR turn left bound to UNPIV (or JESSY, as cleared).

KONER 3M

KONER – TR 074° (RDL 254 PIS VOR) – BETEN – TR 074° (RDL 254 PIS VOR) – PIS VOR/DME.

MEL/MEA: KONER – BETEN: FL 90; BETEN – RDL 254/19 NM PIS VOR/DME: FL 75 (or TRL if higher); RDL 254/19 NM PIS VOR/DME – PIS VOR/DME: 5000 FT

KONER 3M

KONER – TR 074° (RDL 254 PIS VOR) – BETEN – TR 074° (RDL 254 PIS VOR) – PIS VOR/DME.

BETEN 3L

BETEN – TR 074° (RDL 254 PIS VOR) fino a 19 NM PIS DME, quindi virare a destra su TR 140°, indi intercettando RDL 220 PIS VOR virare a sinistra per il punto UNPIV (o JESSY, se autorizzati).

MEL/MEA: BETEN – RDL 254/19 NM PIS VOR/DME: FL 75 (or TRL if higher); RDL 254/19 NM PIS VOR/DME – UNPIV (o/or JESSY): 3000 FT

BETEN 3L

BETEN – TR 074° (RDL 254 PIS VOR) until 19 NM PIS DME, then turn right on TR 140°, then intercepting RDL 220 PIS VOR turn left bound to UNPIV (or JESSY, as cleared).

BETEN 3M

BETEN – TR 074° (RDL 254 PIS VOR) – PIS VOR/DME.

MEL/MEA: BETEN – RDL 254/19 NM PIS VOR/DME: FL 75 (or TRL if higher); RDL 254/19 NM PIS VOR/DME – PIS VOR/DME: 5000 FT

BETEN 3M

BETEN – TR 074° (RDL 254 PIS VOR) – PIS VOR/DME.

NORNI 3L

NORNI – TR 036° (RDL 216 PIS VOR) – UNPIV (o JESSY, se autorizzati).

MEL/MEA: NORNI – RDL 216/22 NM PIS VOR/DME: FL 75 (or TRL if higher); RDL 216/22 NM PIS VOR/DME – UNPIV (o/or JESSY): 3000 FT

NORNI 3L

NORNI – TR 036° (RDL 216 PIS VOR) – UNPIV (or JESSY, as cleared).

PRT 2M

PRT VOR/DME – TR 236° (RDL 236 PRT VOR) – GINAR – TR 276° (RDL 096 PIS VOR) – PIS VOR/DME.

MEA: PRT VOR/DME – GINAR: 6000 FT; GINAR – PIS VOR/DME: 5000 FT

PRT 2M

PRT VOR/DME – TR 236° (RDL 236 PRT VOR) – GINAR – TR 276° (RDL 096 PIS VOR) – PIS VOR/DME.

PRT 2L

PRT VOR/DME – TR 236° (RDL 236 PRT VOR) – GINAR – TR 276° (RDL 096 PIS VOR) – PIS VOR/DME – TR 216° (RDL 216 PIS VOR) – UNPIV (o JESSY, se autorizzati).

MEA: PRT VOR/DME – GINAR: 6000 FT; GINAR – PIS VOR/DME: 5000 FT; PIS VOR/DME – UNPIV (o/or JESSY): 3000 FT

PRT 2L

PRT VOR/DME – TR 236° (RDL 236 PRT VOR) – GINAR – TR 276° (RDL 096 PIS VOR) – PIS VOR/DME – TR 216° (RDL 216 PIS VOR) – UNPIV (or JESSY, as cleared).

IBRID 2L

IBRID – RDL 104 PIS VOR (TR 284°) verso PIS VOR/DME. A 2NM da PIS DME virare a sinistra su RDL 216 (TR 216°) verso UNPIV.

MEA: IBRID – PIS VOR/DME: 5000 FT; PIS VOR/DME – UNPIV: 3000 FT

IBRID 2L

IBRID – RDL 104 PIS VOR (TR 284°) bound to PIS VOR/DME. At 2NM to PIS DME turn left on RDL 216 (TR 216°) bound to UNPIV.

IBRID 2M

IBRID – RDL 104 PIS VOR (TR 284°) verso PIS VOR/DME.

IBRID 2M

IBRID – RDL 104 PIS VOR (TR 284°) bound to PIS VOR/DME.

MEA: IBRID – PIS VOR/DME: 5000 FT

IBRID 2N

IBRID – TR 270° quindi intercettare RDL 108 PIS VOR procedendo verso PIS VOR/DME (TR 288°).

IBRID 2N

IBRID – TR 270° then intercept RDL 108 PIS VOR proceeding bound to PIS VOR/DME (TR 288°).

MEA: IBRID – PIS VOR/DME: 5000 FT

IBRID 2P

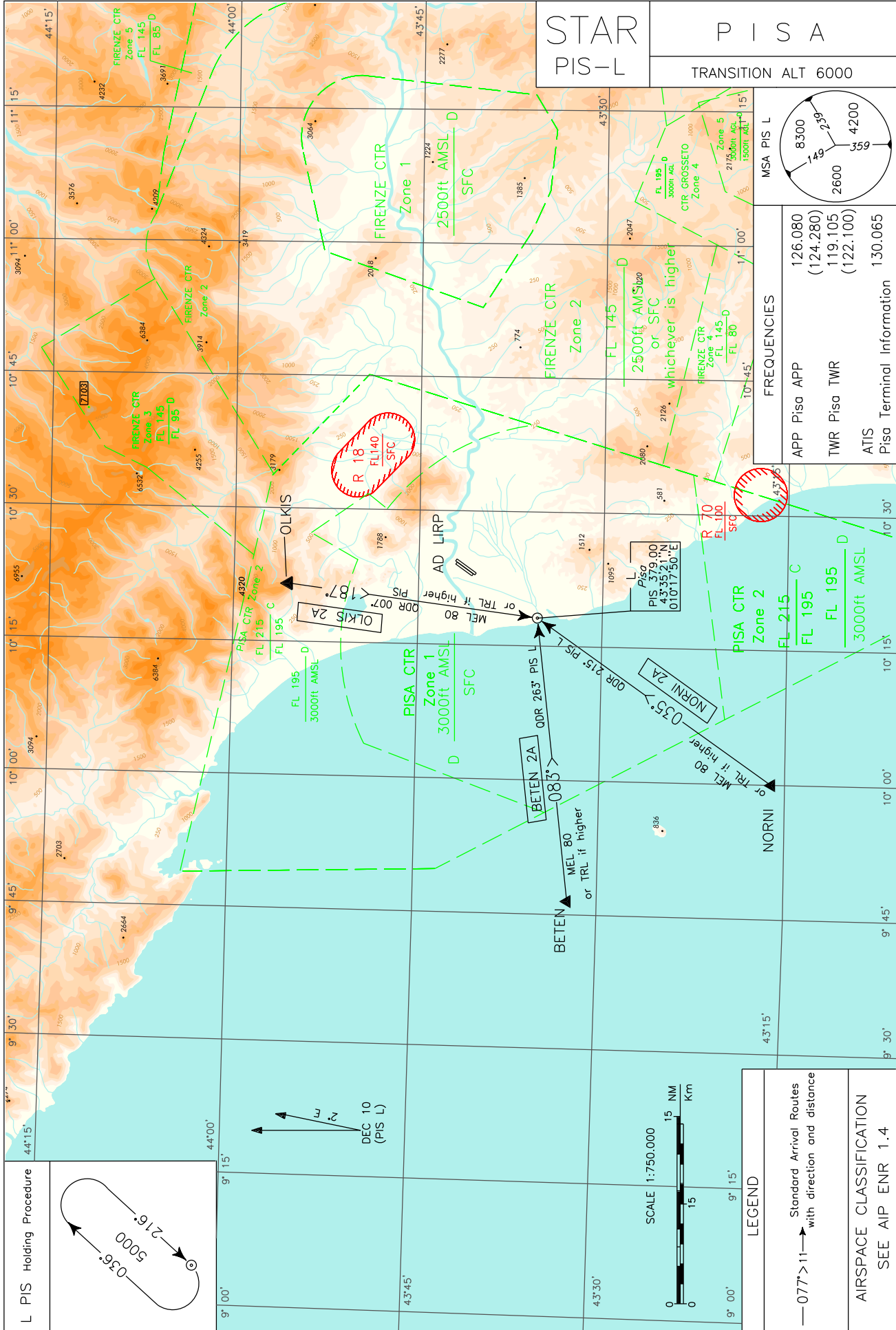
IBRID – TR 270° quindi intercettare RDL 108 PIS VOR procedendo verso PIS VOR/DME (TR 288°). A 2 NM da PIS DME virare a sinistra su RDL 216 (TR 216°) verso UNPIV.

IBRID 2P

IBRID – TR 270° then intercept RDL 108 PIS VOR proceeding bound to PIS VOR/DME (TR 288°). At 2NM to PIS DM E turn left on RDL 216 (TR 216°) bound to UNPIV.

MEA: IBRID – PIS VOR/DME: 5000 FT; PIS VOR/DME – UNPIV: 3000 FT

CHANGE: ATIS FREQUENCY IMPLEMENTED



BETEN 2A

BETEN – TR 083° (QDR 263° PIS L) - PIS L

MEL: BETEN – PIS L: FL 80 (or TRL if higher)

NORNI 2A

NORNI – TR 035° (QDR 215° PIS L) - PIS L

MEL: NORNI – PIS L: FL 80 or TRL if higher)

**OLKIS 2A**

OLKIS – TR 187° (QDR 007° PIS L) - PIS L

MEL: OLKIS – PIS L: FL 80 (or TRL if higher)

BETEN 2A

BETEN – TR 083° (QDR 263° PIS L) - PIS L

NORNI 2A

NORNI – TR 035° (QDR 215° PIS L) - PIS L

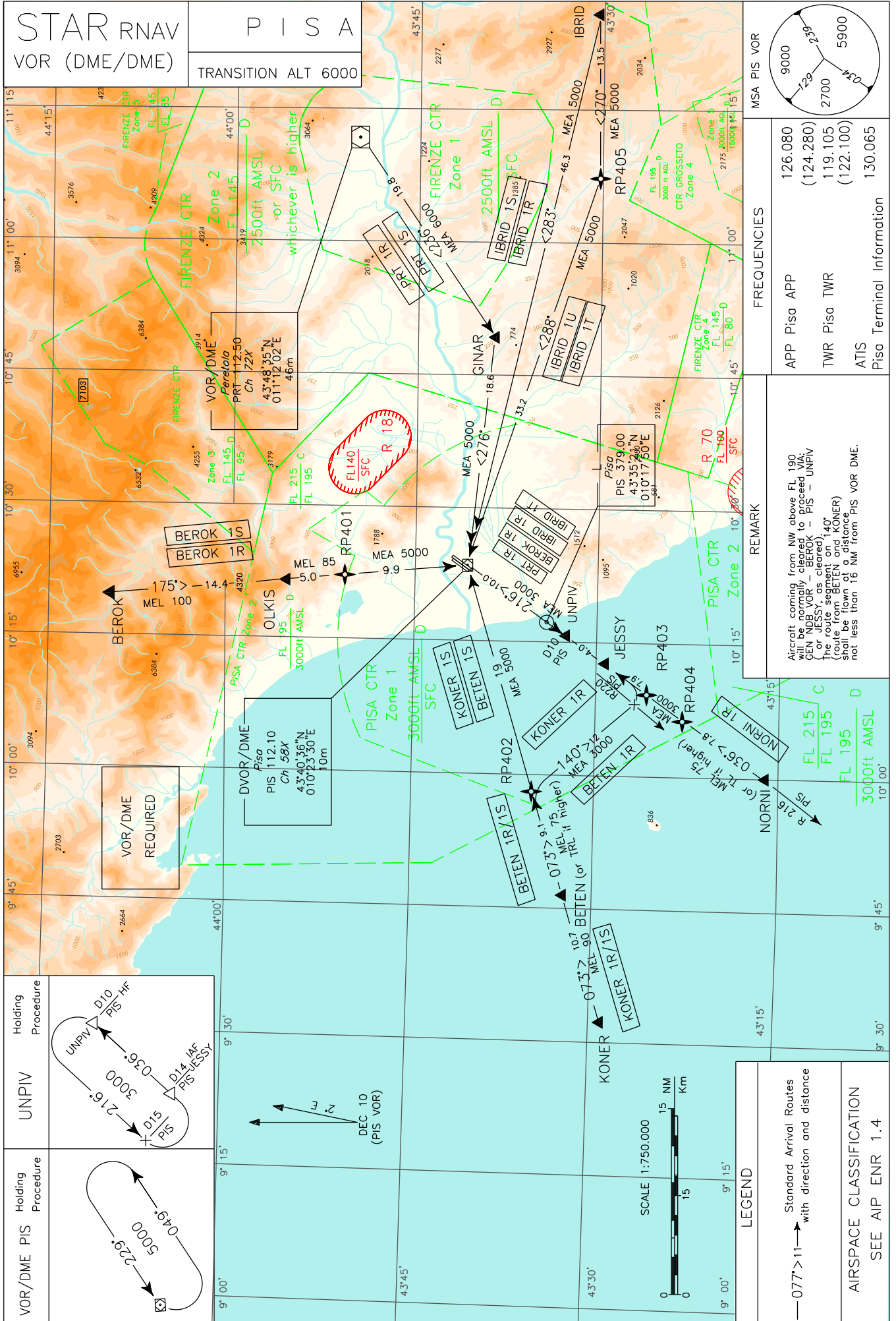
OLKIS 2A

OLKIS – TR 187° (QDR 007° PIS L) - PIS L

Intenzionalmente bianca

Intentionally left blank

CHANGE: ATIS FREQUENCY IMPLEMENTED



STAR RNAV VOR (DME/DME)

BEROK 1S									
BEROK – OLKIS – RP401 - PIS VOR/DME									
MEL/MEA: BEROK-OLKIS: FL 100; OLKIS-RP401: FL 85; RP401-PIS VOR/DME: 5000FT									
Path Terminator	Waypoint Name	Fly Over	Track °Mag	Turn Direction	MEL/MEA	Speed Limit	Recommended Navaid	Bearing/Range to Navaid	Nav Perf
IF	BEROK	-	-	-	-	-	-	-	RNAV 1
TF	OLKIS	-	175°	-	+FL100	-	-	-	RNAV 1
TF	RP401	-	175°	-	+FL85	-	-	-	RNAV 1
TF	PIS VOR/DME	-	175°	-	+5000	-	-	-	RNAV 1
HM	PIS VOR/DME	-	229°	L	+5000	-	PIS VOR/DME	-	CONVENTIONAL

BEROK 1R									
BEROK – OLKIS – RP401 - PIS VOR/DME - UNPIV									
MEL/MEA: BEROK-OLKIS: FL 100; OLKIS-RP401: FL 85; RP401-PIS VOR/DME: 5000FT; PIS VOR/DME –UNPIV: 3000 FT									
Path Terminator	Waypoint Name	Fly Over	Track °Mag	Turn Direction	MEL/MEA	Speed Limit	Recommended Navaid	Bearing/Range to Navaid	Nav Perf
IF	BEROK	-	-	-	-	-	-	-	RNAV 1
TF	OLKIS	-	175°	-	+FL100	-	-	-	RNAV 1
TF	RP401	-	175°	-	+FL85	-	-	-	RNAV 1
TF	PIS VOR/DME	-	175°	-	+5000	-	-	-	RNAV 1
TF	UNPIV	-	216°	R	+3000	-	-	-	RNAV 1
HM	UNPIV	-	036°	L	+3000	-	PIS VOR/DME	RDL 216/D10	CONVENTIONAL

KONER 1S									
KONER – BETEN – RP402 - PIS VOR/DME									
MEL/MEA: KONER-BETEN: FL 90; BETEN-RP402:FL 75; RP402-PIS VOR/DME: 5000FT									
Path Terminator	Waypoint Name	Fly Over	Track °Mag	Turn Direction	MEL/MEA	Speed Limit	Recommended Navaid	Bearing/Range to Navaid	Nav.Perf
IF	KONER	-	-	-	-	-	-	-	RNAV 1
TF	BETEN	-	073°	-	+FL90	-	-	-	RNAV 1
TF	RP402	-	073°	-	+FL75	-	-	-	RNAV 1
TF	PIS VOR/DME	-	073°	-	+5000	-	-	-	RNAV 1
HM	PIS VOR/DME	-	229°	L	+5000	-	PIS VOR/DME	-	CONVENTIONAL

KONER 1R									
KONER – BETEN – RP402 - RP403 - JESSY - UNPIV									
MEL/MEA: KONER-BETEN: FL 90; BETEN-RP402:FL 75; RP402-RP 403: 3000FT-RP403-JESSY: 3000FT; JESSY-UNPIV:3000FT									
Path Terminator	Waypoint Name	Fly Over	Track °Mag	Turn Direction	MEL/MEA	Speed Limit	Recommended Navaid	Bearing/Range to Navaid	Nav Perf
IF	KONER	-	-	-	-	-	-	-	RNAV 1
TF	BETEN	-	073°	-	+FL90	-	-	-	RNAV 1
TF	RP402	-	073°	-	+FL75	-	-	-	RNAV 1
TF	RP403	-	140°	R	+3000	-	-	-	RNAV 1
TF	JESSY	-	036°	L	+3000	-	-	-	RNAV 1
TF	UNPIV	-	036°	-	+3000	-	-	-	RNAV 1
HM	UNPIV	-	036°	L	+3000	-	PIS VOR/DME	RDL 216/D10	CONVENTIONAL

BETEN 1S									
BETEN – RP402 - PIS VOR/DME									
MEL/MEA: BETEN-RP402:FL 75; RP402-PIS VOR/DME: 5000FT									
Path Terminator	Waypoint Name	Fly Over	Track °Mag	Turn Direction	MEL/MEA	Speed Limit	Recommended Navaid	Bearing/Range to Navaid	Nav Perf
IF	BETEN	-	-	-	-	-	Y _D	-	RNAV 1
TF	RP402	-	073°	-	+FL75	-	-	-	RNAV 1
TF	PIS VOR/DME	-	073°	-	+5000	-	-	-	RNAV 1
HM	PIS VOR/DME	-	229°	L	+5000	-	PIS VOR/DME	-	CONVENTIONAL

BETEN 1R									
BETEN – RP402 – RP403 – JESSY - UNPIV									
MEL/MEA: BETEN-RP402:FL 75; RP402-RP 403: 3000 FT-RP403-JESSY: 3000FT; JESSY-UNPIV:3000FT									
Path Terminator	Waypoint Name	Fly ^a	Track °Mag	Turn Direction	MEL/MEA	Speed Limit	Recommended Navaid	Bearing/Range to Navaid	Nav Perf
IF	BETEN	-	-	-	-	-	-	-	RNAV 1
TF	RP402	-	073°	-	+FL75	-	-	-	RNAV 1
TF	RP403	-	140°	R	+3000	-	-	-	RNAV 1
TF	JESSY	-	036°	L	+3000	-	-	-	RNAV 1
TF	UNPIV	-	036°	-	+3000	-	-	-	RNAV 1
HM	UNPIV	-	036°	L	+3000	-	PIS VOR/DME	RDL 216/D10	CONVENTIONAL

NORNI 1R									
NORNI – RP404 – JESSY - UNPIV									
MEL/MEA: NORNI-RP404:FL 75; RP404-JESSY: 3000FT; JESSY-UNPIV:3000FT									
Path Terminator	Waypoint Name	Fly Over	Track °Mag	Turn Direction	MEL/MEA	Speed Limit	Recommended Navaid	Bearing/Range to Navaid	Nav Perf
IF	NORNI	-	-	-	-	-	-	-	RNAV 1
TF	RP404	-	036°	-	+FL75	-	-	-	RNAV 1
TF	JESSY	-	036°	-	+3000	-	-	-	RNAV 1
TF	UNPIV	-	036°	-	+3000	-	-	-	RNAV 1
HM	UNPIV	-	036°	L	+3000	-	PIS VOR/DME	-	CONVENTIONAL

PRT 1S									
PRT VOR/DME – GINAR - PIS VOR/DME									
MEL/MEA: PRT VOR/DME –GINAR :6000FT; GINAR-PIS VOR/DME: 5000FT									
Path Terminator	Waypoint Name	Fly Over	Track °Mag	Turn Direction	MEL/MEA	Speed Limit	Recommended Navaid	Bearing/Range to Navaid	Nav Perf
IF	PRT VOR/DME	-	-	-	-	-	-	-	RNAV 1
TF	GINAR	-	236°	-	+6000	-	-	-	RNAV 1
TF	PIS VOR/DME	-	276°	-	+5000	-	-	-	RNAV 1
HM	PIS VOR/DME	-	229°	L	+5000	-	PIS VOR/DME	-	CONVENTIONAL

PRT 1R									
PRT VOR/DME – GINAR - PIS VOR/DME - UNPIV									
MEL/MEA: PRT VOR/DME –GINAR :6000FT; GINAR-PIS VOR/DME: 5000FT –PIS VOR/DME-UNPIV:3000FT									
Path Terminator	Waypoint Name	Fly Over	Track °Mag	Turn Direction	MEL/MEA	Speed Limit	Recommended Navaid	Bearing/Range to Navaid	Nav Perf
IF	PRT VOR/DME	-	-	-	-	-	-	-	RNAV 1
TF	GINAR	-	236°	-	+6000	-	-	-	RNAV 1
TF	PIS VOR/DME	-	276°	-	+5000	-	-	-	RNAV 1
TF	UNPIV	-	216°	L	+3000	-	-	-	RNAV 1
HM	UNPIV	-	036°	L	+3000	-	PIS VOR/DME	RDL 216/D10	CONVENTIONAL

IBRID 1S									
IBRID - PIS VOR/DME									
MEL/MEA: IBRID-PIS VOR/DME: 5000FT									
Path Terminator	Waypoint Name	Fly Over	Track °Mag	Turn Direction	MEL/MEA	Speed Limit	Recommended Navaid	Bearing/Range to Navaid	Nav Perf
IF	IBRID	-	-	-	-	-	-	-	RNAV 1
TF	PIS VOR/DME	-	283°	-	+5000	-	-	-	RNAV 1
HM	PIS VOR/DME	-	229°	L	+5000	-	PIS VOR/DME	-	CONVENTIONAL

IBRID 1R									
IBRID - PIS VOR/DME - UNPIV MEL/MEA: IBRID-PIS VOR/DME: 5000FT; PIS VOR/DME-UNPIV:3000FT									
Path Terminator	Waypoint Name	Fly Over	Track °Mag	Turn Direction	MEL/MEA	Speed Limit	Recommended Navaid	Bearing/Range to Navaid	Nav Perf
IF	IBRID	-	-	-	-	-	-	-	RNAV 1
TF	PIS VOR/DME	-	283°	-	+5000	-	-	-	RNAV 1
TF	UNPIV	-	216°	L	+3000	-	-	-	RNAV 1
HM	UNPIV	-	036°	L	+3000	-	PIS VOR/DME	RDL 216/D10	CONVENTIONAL

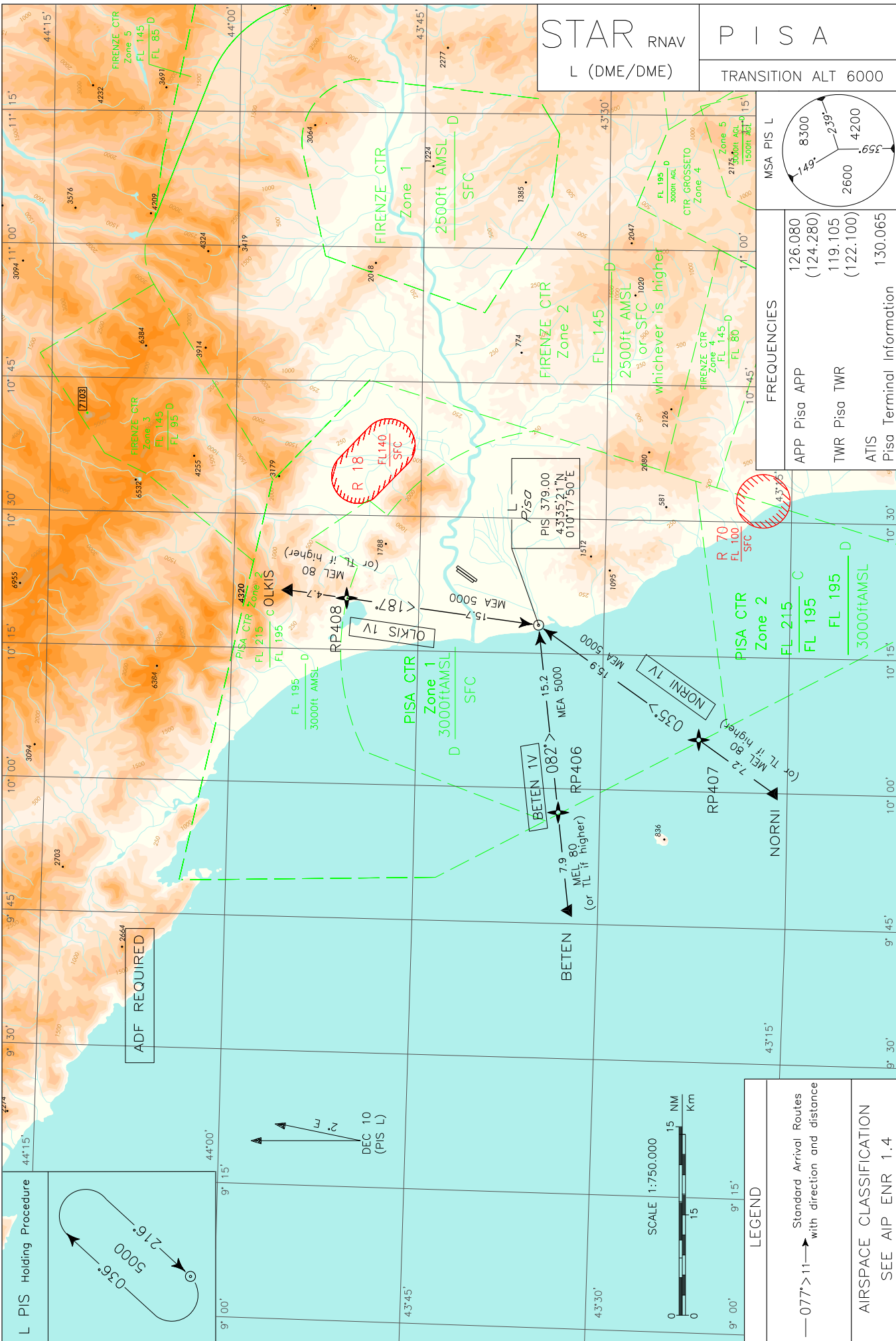
IBRID 1U									
IBRID – RP405 - PIS VOR/DME MEL/MEA: IBRID-RP405:5000FT; RP405-PIS VOR/DME: 5000FT									
Path Terminator	Waypoint Name	Fly Over	Track °Mag	Turn Direction	MEL/MEA	Speed Limit	Recommended Navaid	Bearing/Range to Navaid	Nav Perf
IF	IBRID	-	-	-	-	-	-	-	RNAV 1
TF	RP405	-	270°	-	+5000	-	-	-	RNAV1
TF	PIS VOR/DME	-	2	R	+5000	-	-	-	RNAV 1
HM	PIS VOR/DME	-	229°	L	+5000	-	PIS VOR/DME	-	CONVENTIONAL

IBRID 1T									
IBRID – RP405 - PIS VOR/DME - UNPIV MEL/MEA: IBRID-RP405:5000FT; RP405-PIS VOR/DME: 5000FT; PIS VOR/DME-UNPIV:3000FT									
Path Terminator	Waypoint Name	Fly Over	Track °Mag	Turn Direction	MEL/MEA	Speed Limit	Recommended Navaid	Bearing/Range to Navaid	Nav Perf
IF	IBRID	-	-	-	-	-	-	-	RNAV 1
TF	RP405	-	270°	-	+5000	-	-	-	RNAV1
TF	PIS VOR/DME	-	288°	R	+5000	-	-	-	RNAV 1
TF	UNPIV	-	216°	L	+3000	-	-	-	RNAV 1
HM	UNPIV	-	036°	L	+3000	-	PIS VOR/DME	RDL 216/D10	CONVENTIONAL

Intenzionalmente bianca

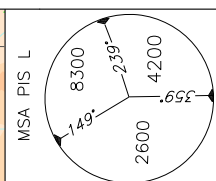
Intentionally left blank

CHANGE: ATIS FREQUENCY IMPLEMENTED

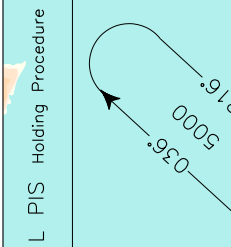


STAR RNAV
L (DME/DME)

P I S A
TRANSITION ALT 6000



FREQUENCIES	
APP Pisa APP	126.080 (124.280)
TWR Pisa TWR	119.105 (122.100)
ATIS	130.065
Pisa Terminal Information	



STAR RNAV L (DME/DME)

BETEN 1V									
BETEN – RP406 - PIS NDB MEL/MEA:BETEN-RP406:FL80; RP406-PIS NDB:5000FT									
Path Terminator	Waypoint Name	Fly Over	Track °Mag	Turn Direction	MEL/MEA	Speed Limit	Recommended Navaid	Bearing/ Range to Navaid	Nav Perf
IF	BETEN	-	-	-	-	-	-	-	RNAV 1
TF	RP406	-	082°	-	+FL80	-	-	-	RNAV 1
TF	PIS NDB	-	082°	-	+5000	-	-	-	RNAV 1
HM	PIS NDB	-	216°	R	+5000	-	PIS NDB	-	CONVENTIONAL

NORNI 1V									
NORNI - RP407 - PIS NDB MEL/MEA:NORNI-RP407:FL80; RP407-PIS NDB:5000FT									
Path Terminator	Waypoint Name	Fly Over	Track °Mag	Turn Direction	MEL/MEA	Speed Limit	Recommended Navaid	Bearing/ Range to Navaid	Nav Perf
IF	NORNI	-	-	-	-	-	-	-	RNAV 1
TF	RP407	-	035°	-	+FL80	-	-	-	RNAV 1
TF	PIS NDB	-	035°	-	+5000	-	-	-	RNAV 1
HM	PIS NDB	-	216°	R	+5000	-	PIS NDB	-	CONVENTIONAL

OLKIS 1V									
OLKIS – RP408 - PIS NDB MEL/MEA:OLKIS-RP408:FL80; RP408-PIS NDB:5000FT									
Path Terminator	Waypoint Name	Fly Over	Track °Mag	Turn Direction	MEL/MEA	Speed Limit	Recommended Navaid	Bearing/ Range to Navaid	Nav Perf
IF	OLKIS	-	-	-	-	-	-	-	RNAV 1
TF	RP408	-	187°	-	+FL80	-	-	-	RNAV 1
TF	PIS NDB	-	187°	-	+5000	-	-	-	RNAV 1
HM	PIS NDB	-	216°	R	+5000	-	PIS NDB	-	CONVENTIONAL

Waypoints Table Formatted according ARINC 424 standards

Waypoint	Latitude	Longitude
RP401	N43503337	E010223931
RP402	N43353752	E009581183
RP403	N43260831	E010082176
RP404	N43230357	E010051318
RP405	N43290673	E011062324
RP406	N43335643	E009565573
RP407	N43223356	E010044268
RP408	N43505232	E010211153

Intenzionalmente bianca

Intentionally left blank