

Initial climb procedure RWY 06

After take-off proceed on runway heading (TR 055°) until 5.3 NM NPC DME (or 4.5 NM NAP DME), to be crossed at 2000 ft or above, then:

- if cleared for TEA 6L: turn left on TR 270° until joining RDL 316 TEA VOR (TR 316°) bound to TEA VOR
- if cleared for other SID: turn left on TR 208° until joining RDL 340 SOR VOR (TR 160°) bound to GEMMA.

MCA: INT TR 055° / 5.3 NM NPC DME (or 4.5 NM NAP DME) 2000 FT; INT TR 208° - RDL 340 SOR VOR 3000 FT; GEMMA 6000 FT

Minimum climb gradient: 425 ft/NM until leaving 4000 ft.

Turn speed: 210 kt IAS MAX.

WARNING

Close-in obstacles penetrating OIS 2.5% exist, but they were not considered for the published procedure design gradient.

REMARK

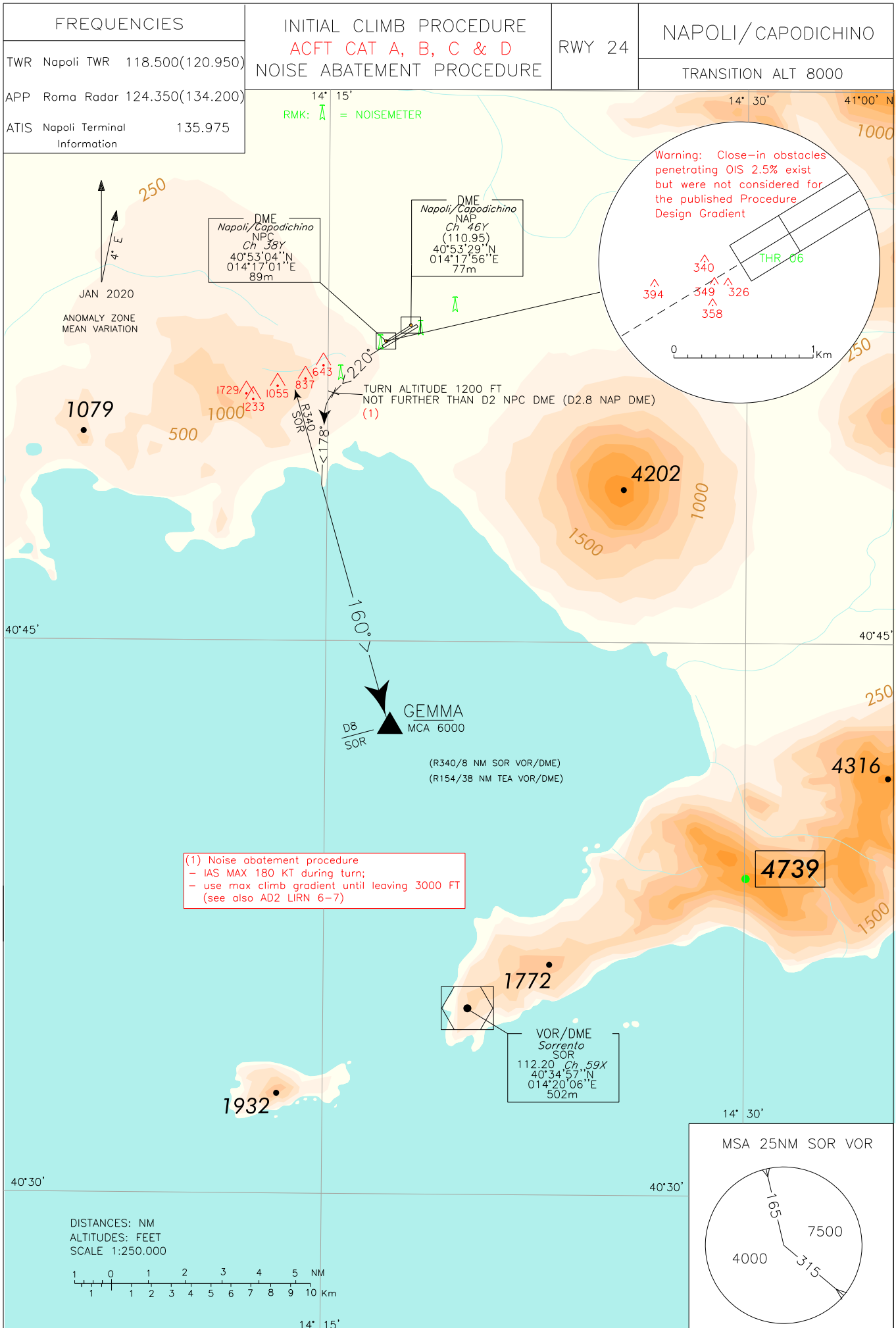
Relevant obstacles located West of the aerodrome.

Pilots shall adopt a minimum climb gradient in accordance with ICAO Annex 6 provisions for a safe obstacles overflying.

Such climb gradient shall be maintained in any foreseeable circumstances.

Intenzionalmente bianca

Intentionally left blank



CHANGE: POM DME WITHDRAWN. DME NAP ADDED

Initial climb procedure RWY 24 Acft Cat A, B, C & D
Noise abatement procedure

- After take-off at DER (Departure End of the RWY – 0.5NM from NPC DME or 1.3NM from NAP DME - WEST of DME) proceed on TR 220° climbing to 6000 ft.
At 1200 ft, not further than 2NM NPC DME (or 2.8NM NAP DME), turn left (IAS MAX 180 kt during turn) on heading 178° until joining RDL 340 SOR VOR (TR 160°) bound to GEMMA.

MCA: INT TR 220°/2NM NPC DME (2.8 NM NAP DME) 1200 FT; GEMMA (RDL 340/8NM SOR VOR/DME) 6000 FT

Minimum climb gradient: Use MAX climb gradient until leaving 3000 ft.

In any case the minimum acceptable climb gradient is 585 ft/NM (9.6%). Pilots of departing aircraft unable to comply with the above noise abatement profile shall request to take-off from RWY 06.

WARNING

Close-in obstacles penetrating OIS 2.5% exist, but they were not considered for the published procedure design gradient.

REMARK

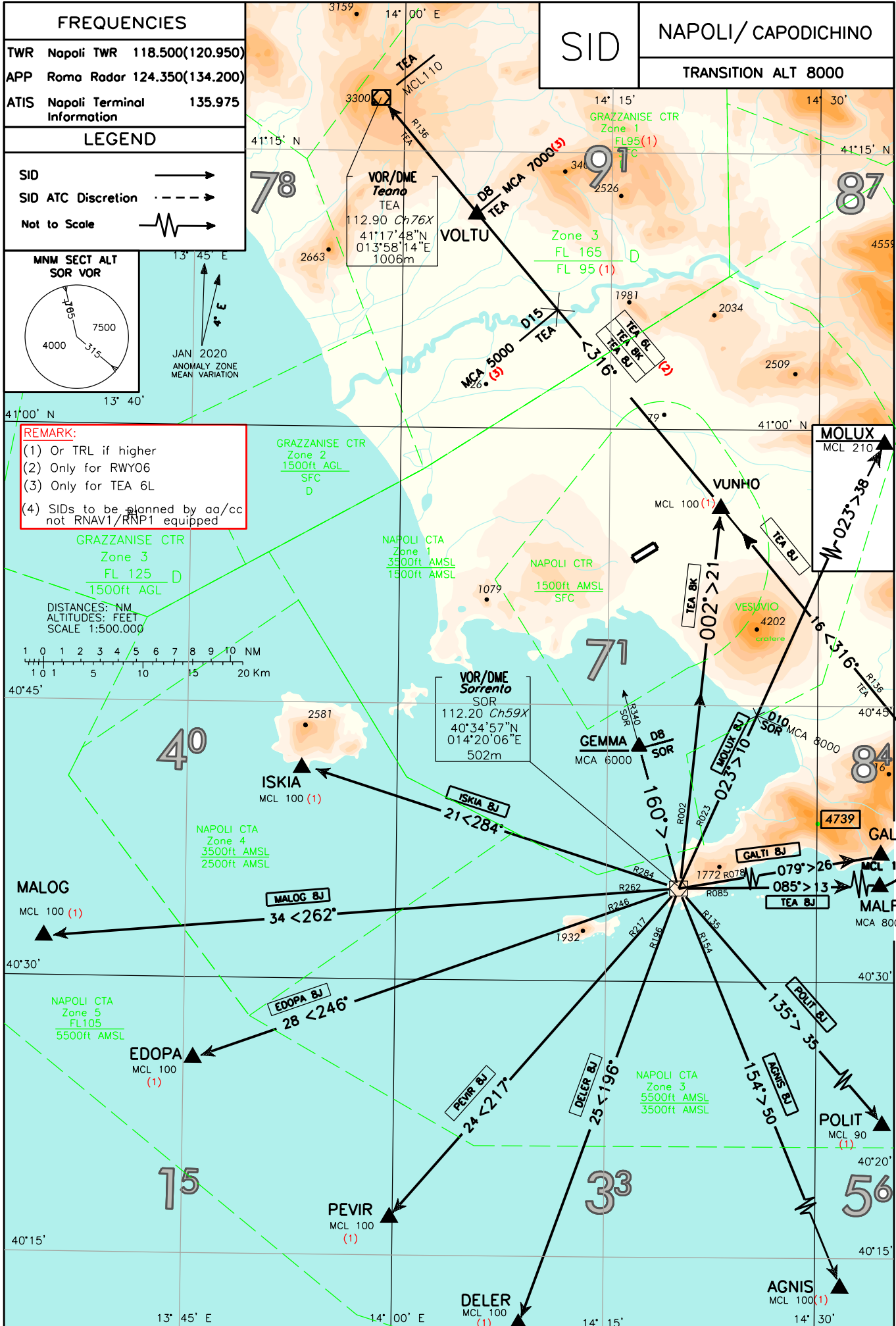
Relevant obstacles located West of the aerodrome.

Pilots shall adopt a minimum climb gradient in accordance with ICAO Annex 6 provisions for a safe obstacles overflying.

Such climb gradient shall be maintained in any foreseeable circumstances.

Intenzionalmente bianca

Intentionally left blank



CHANGE: REMARK 4 ADDED

SID DESCRIPTION**AGNIS 8J**

Proceed to SOR VOR, then turn left to join RDL154 SOR VOR bound to AGNIS.

MCA/MCL: AGNIS: FL100 (1)

DELER 8J

Proceed to SOR VOR, then turn right to join RDL196 SOR VOR bound to DELER.

MCA/MCL: DELER: FL100 (1)

EDOPA 8J

Proceed to SOR VOR, then turn right to join RDL246 SOR VOR bound to EDOPA.

MCA/MCL: EDOPA: FL100 (1)

GALTI 8J

Proceed to SOR VOR, then turn left and proceed on TR 079° (RDL079 SOR VOR) bound to GALTI.

MCA/MCL: GALTI: FL105

ISKIA 8J

Proceed to SOR VOR, then turn right to join RDL284 SOR VOR bound to ISKIA.

MCA/MCL: ISKIA: FL100 (1)

MALOG 8J

Proceed to SOR VOR, then turn right to join RDL262 SOR VOR bound to MALOG.

MCA/MCL: MALOG: FL100 (1)

MOLUX 8J

Proceed to SOR VOR, then turn left and proceed on TR 023° (RDL023 SOR VOR) bound to MOLUX.

MCA/MCL: RDL023 / D10 SOR VOR/DME: 8000; MOLUX: FL210

PEVIR 8J

Proceed to SOR VOR, then turn right to join RDL217 SOR VOR bound to PEVIR.

MCA/MCL: PEVIR: FL100 (1)

POLIT 8J

Proceed to SOR VOR, then turn left to join RDL135 SOR VOR bound to POLIT.

MCA/MCL: POLIT: FL90 (1)

TEA 8J

Proceed to SOR VOR, then turn left to join RDL085 SOR VOR bound to MALFI, then turn left to join RDL 136 TEA VOR (TR 316°) bound to VUNHO, then TEA VOR.

MCA/MCL: MALFI 8000 FT; VUNHO: FL100 (1); TEA VOR: FL110

TEA 8K

Proceed to SOR VOR, then turn left to join RDL002 SOR VOR bound to point VUNHO, then turn left to join RDL136 TEA (TR 316°) bound to TEA VOR

MCA/MCL: VUNHO: FL100 (1); TEA VOR: FL110

REMARK

Left turn bound to VUNHO may be executed before passing SOR VOR, provided that the aircraft had already crossed 6000 FT climbing and appropriate clearance has been asked to and obtained from Napoli APP.

TEA 6L (only for RWY06)

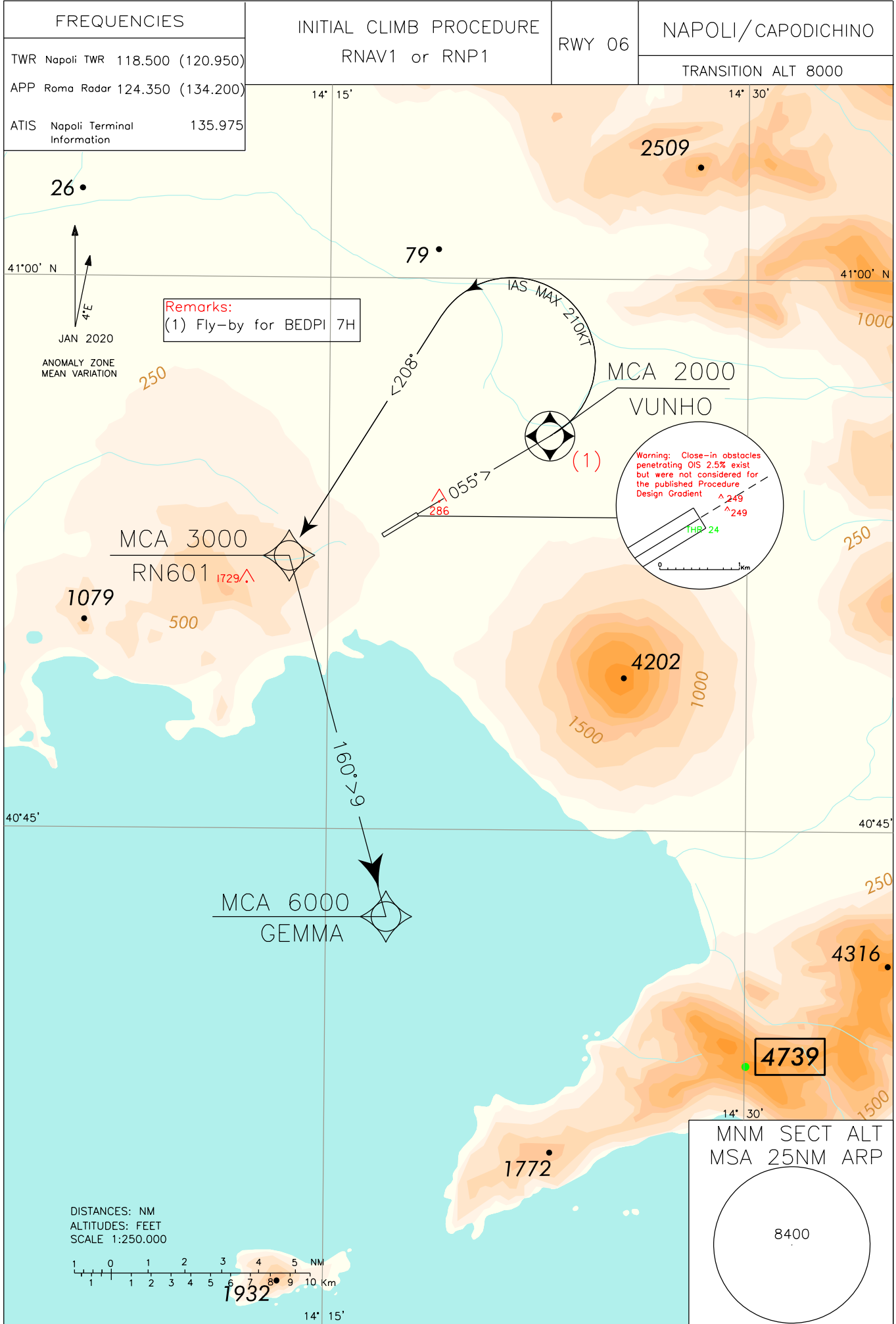
Proceed on RDL 136 TEA VOR (TR 316°) bound to TEA VOR.

MCA/MCL: RDL136 / D15 TEA VOR/DME: 5000; VOLTU (RDL136 / D8 TEA VOR/DME): 7000; TEA VOR: FL110

(1) or TRL if higher.

Intenzionalmente bianca

Intentionally left blank



CHANGE: REMARK 1 ADDED

Initial climb procedure RNAV 1 or RNP1 RWY 06

If cleared for ALAXI 7H, SIPRO 7H or BEDPI 7H:

Path Terminator	Waypoint Identifier	Fly Over	Course °M(°T)	Magnetic Variation	Distance (NM)	Turn Direction	Altitude (ft)	Speed Limit (kt)	Navigation Specification
CF	VUNHO	Y (2)	055° (058.2)	3.6°E	4.2	-	+2000	-210	RNAV1/RNP1 (1)

(1) For "monitoring and alerting" reasons, RNP1 specification is required in case of radar service unavailability or degradation

(2) Fly-by for BEDPI 7H

If cleared for other SID:

Path Terminator	Waypoint Identifier	Fly Over	Course °M(°T)	Magnetic Variation	Distance (NM)	Turn Direction	Altitude (ft)	Speed Limit (kt)	Navigation Specification
CF	VUNHO	Y	055° (058.2)	3.6°E	4.2	-	+2000	-210	RNAV1/RNP1 (1)
CF	RN601	-	208° (211.6)	3.6°E	-	L	+3000	-210	RNAV1/RNP1 (1)
TF	GEMMA	-	160° (163.8)	-	9.2	-	+6000	-	RNAV1/RNP1 (1)

(1) For "monitoring and alerting" reasons, RNP1 specification is required in case of radar service unavailability or degradation

Minimum climb gradient:

- for ALAXI 7H, SIPRO 7H 7% (425 ft/NM) until leaving 4000FT
- for BEDPI 7H 7.9 % (480 ft/ NM) until leaving 5000 FT
- for other SID 7% (425 ft/NM) until leaving 3000FT

WARNING

There are close-in obstacles penetrating OIS 2.5%, but they were not considered for the published Procedure Design Gradient.

REMARK

Relevant obstacles located West of the aerodrome.

Pilots shall adopt a minimum climb gradient in accordance with ICAO Annex 6 provisions for a safe obstacles overflying.

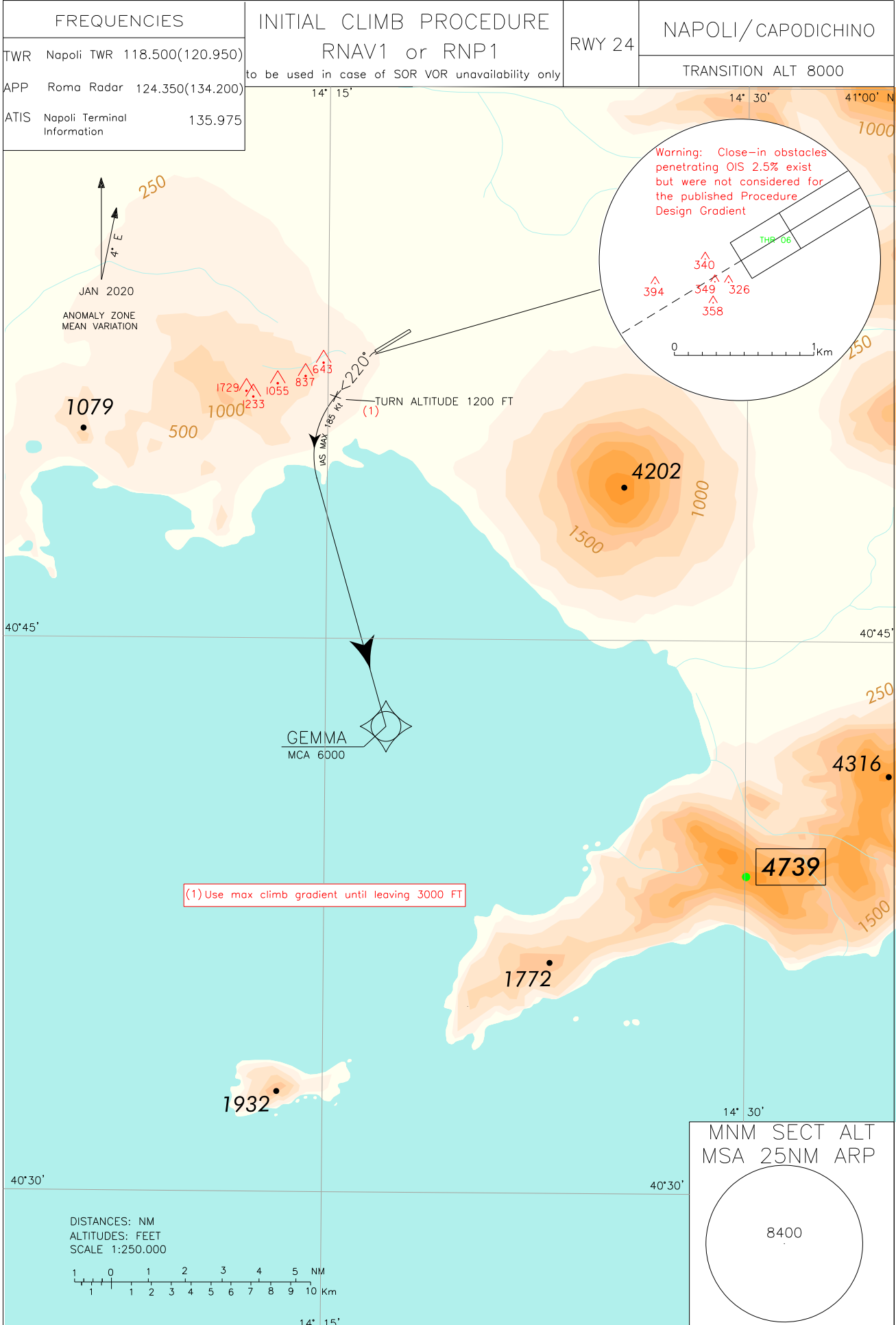
Such climb gradient shall be maintained in any foreseeable circumstances.

WAYPOINT LIST

Waypoint Identifier	Coordinates
RN601	40°51'28.88" N 014°13'47.07" E

Intenzionalmente bianca

Intentionally left blank



CHANGE: GEMMA MCA UPDATED. REVISED APP UNIT

Initial climb procedure RNAV 1 or RNP 1 RWY 24

To be used in case of SOR VOR unavailability only

Path Terminator	Waypoint Identifier	Fly Over	Course °M(°T)	Magnetic Variation	Distance (NM)	Turn Direction	Altitude (ft)	Speed Limit (kt)	Navigation Specification
CA	-	-	220° (223.1°)	3.6°E	-	-	+1200	-185	RNAV1/RNP1 (1)
DF	GEMMA	-	-	-	-	-	+6000	-185	RNAV1/RNP1 (1)

(1) For "monitoring and alerting" reasons, RNP1 specification is required in case of radar service unavailability or degradation

REMARKS

1. Use MAX climb gradient until leaving 3000 ft.
In any case the minimum acceptable climb gradient is 585 ft/NM (9.6%). Pilots of departing aircraft unable to comply with the above noise abatement profile shall request to take-off from RWY 06.
2. Turns leaving 1200 FT shall be executed with IAS MAX 185 kt.
3. Turn before DER not allowed.

WARNINGS

1. There are close-in obstacles penetrating OIS 2.5%, but they were not considered for the published Procedure Design Gradient.
2. Relevant obstacles located West of the aerodrome. Pilots shall adopt a minimum climb gradient in accordance with ICAO Annex 6 provisions for a safe obstacles overflying. Such climb gradient shall be maintained in any foreseeable circumstances.

Intenzionalmente bianca

Intentionally left blank

SID RNAV1/RNP1 RWY 24

NAPOLI/CAPODICHINO

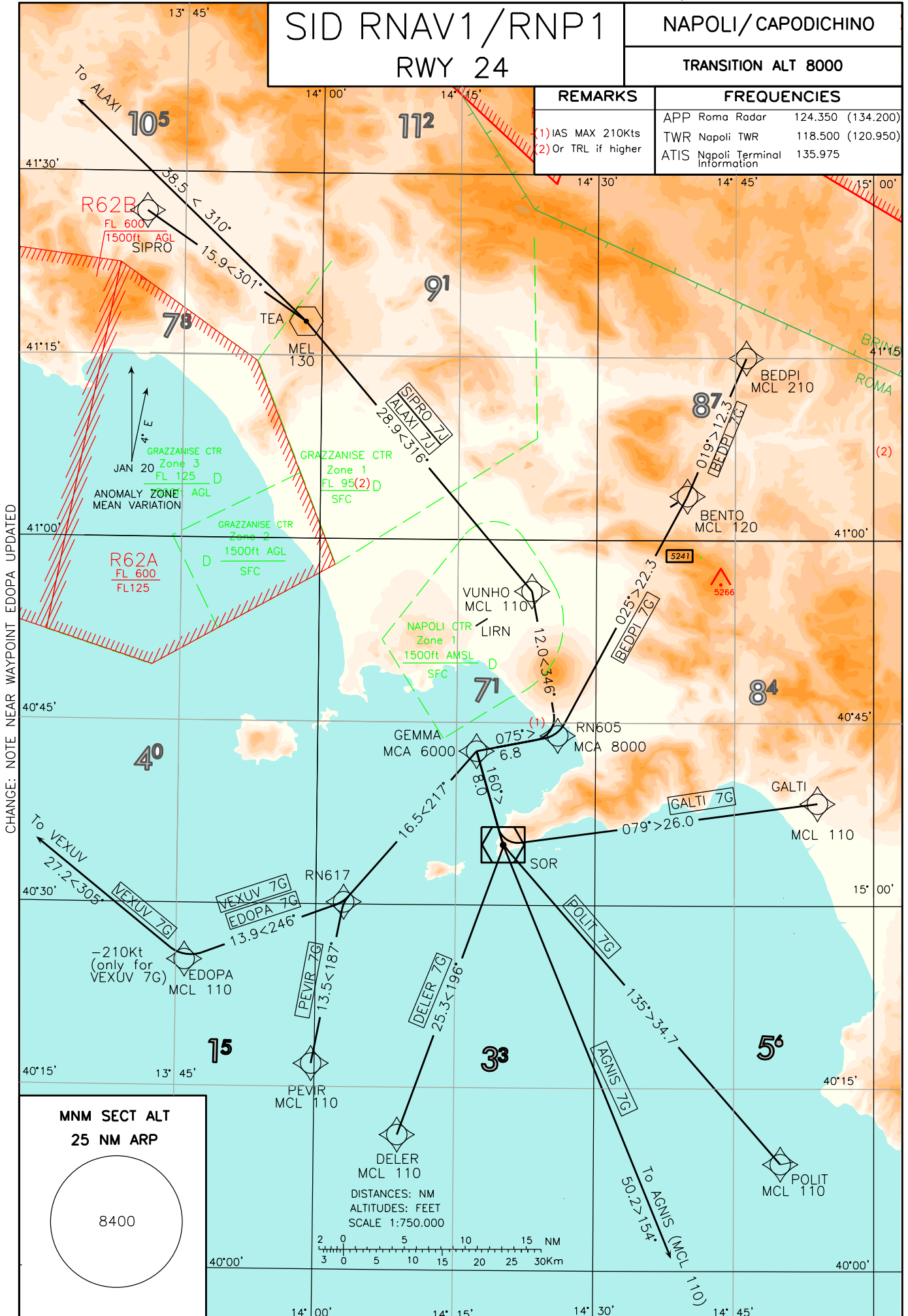
TRANSITION ALT 8000

REMARKS

- (1) IAS MAX 210Kts
- (2) Or TRL if higher

FREQUENCIES

APP Roma Radar	124.350 (134.200)
TWR Napoli TWR	118.500 (120.950)
ATIS Napoli Terminal Information	135.975

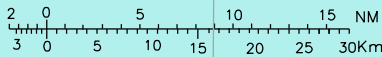


CHANGE: NOTE NEAR WAYPOINT EDOPA UPDATED

**MNM SECT ALT
25 NM ARP**

8400

DISTANCES: NM
ALTITUDES: FEET
SCALE 1:750.000



SID RNAV1 or RNP1 RWY24 Napoli / Capodichino**AGNIS 7G**

Path Terminator	Waypoint Identifier	Fly Over	Course °M(°T)	Magnetic Variation	Distance (NM)	Turn Direction	Altitude (ft)	Speed Limit (kt)	Navigation Specification
IF	GEMMA	-	-	-	-	-	+6000	-	RNAV1/RNP1 (1)
TF	SOR	-	160° (163.8)	-	8.0	-	-	-	RNAV1/RNP1 (1)
TF	AGNIS	-	154° (157.5)	-	50.2	-	+FL110	-	RNAV1/RNP1 (1)

DELER 7G

Path Terminator	Waypoint Identifier	Fly Over	Course °M(°T)	Magnetic Variation	Distance (NM)	Turn Direction	Altitude (ft)	Speed Limit (kt)	Navigation Specification
IF	GEMMA	-	-	-	-	-	+6000	-	RNAV1/RNP1 (1)
TF	SOR	-	160° (163.8)	-	8.0	-	-	-	RNAV1/RNP1 (1)
TF	DELER	-	196° (199.4)	-	25.3	-	+FL110	-	RNAV1/RNP1 (1)

EDOPA 7G

Path Terminator	Waypoint Identifier	Fly Over	Course °M(°T)	Magnetic Variation	Distance (NM)	Turn Direction	Altitude (ft)	Speed Limit (kt)	Navigation Specification
IF	GEMMA	-	-	-	-	-	+6000	-	RNAV1/RNP1 (1)
TF	RN617	-	217° (221.0)	-	16.5	-	-	-	RNAV1/RNP1 (1)
TF	EDOPA	-	246° (250.0)	-	13.9	-	+FL110	-	RNAV1/RNP1 (1)

GALTI 7G

Path Terminator	Waypoint Identifier	Fly Over	Course °M(°T)	Magnetic Variation	Distance (NM)	Turn Direction	Altitude (ft)	Speed Limit (kt)	Navigation Specification
IF	GEMMA	-	-	-	-	-	+6000	-	RNAV1/RNP1 (1)
TF	SOR	-	160° (163.8)	-	8.0	-	-	-	RNAV1/RNP1 (1)
TF	GALTI	-	079° (082.2)	-	26.0	-	+FL110	-	RNAV1/RNP1 (1)

VEXUV 7G

Path Terminator	Waypoint Identifier	Fly Over	Course °M(°T)	Magnetic Variation	Distance (NM)	Turn Direction	Altitude (ft)	Speed Limit (kt)	Navigation Specification
IF	GEMMA	-	-	-	-	-	+6000	-	RNAV1/RNP1 (1)
TF	RN617	-	217° (221.0)	-	16.5	-	-	-	RNAV1/RNP1 (1)
TF	EDOPA	-	246° (250.0)	-	13.9	-	+FL110	-210	RNAV1/RNP1 (1)
TF	VEXUV	-	305° (308.8°)	-	27.2	-	-	-	RNAV1/RNP1 (1)

PEVIR 7G

Path Terminator	Waypoint Identifier	Fly Over	Course °M(°T)	Magnetic Variation	Distance (NM)	Turn Direction	Altitude (ft)	Speed Limit (kt)	Navigation Specification
IF	GEMMA	-	-	-	-	-	+6000	-	RNAV1/RNP1 (1)
TF	RN617	-	217° (221.0)	-	16.5	-	-	-	RNAV1/RNP1 (1)
TF	PEVIR	-	187° (190.9)	-	13.5	-	+FL110	-	RNAV1/RNP1 (1)

BEDPI 7G

Path Terminator	Waypoint Identifier	Fly Over	Course °M(°T)	Magnetic Variation	Distance (NM)	Turn Direction	Altitude (ft)	Speed Limit (kt)	Navigation Specification
IF	GEMMA	-	-	-	-	-	+6000	-	RNAV1/RNP1 (1)
TF	RN605	-	075° (078.8)	-	6.8	-	+8000	-210	RNAV1/RNP1 (1)
TF	BENTO	-	025° (028.1°)	-	22.3	-	+FL120	-	RNAV1/RNP1 (1)
TF	BEDPI	-	019° (022.3)	-	12.3	-	+FL210	-	RNAV1/RNP1 (1)

POLIT 7G

Path Terminator	Waypoint Identifier	Fly Over	Course °M(°T)	Magnetic Variation	Distance (NM)	Turn Direction	Altitude (ft)	Speed Limit (kt)	Navigation Specification
IF	GEMMA	-	-	-	-	-	+6000	-	RNAV1/RNP1 (1)
TF	SOR	-	160° (163.8)	-	8.0	-	-	-	RNAV1/RNP1 (1)
TF	POLIT	-	135° (138.9°)	-	34.7	-	+FL110	-	RNAV1/RNP1 (1)

SIPRO 7J

Path Terminator	Waypoint Identifier	Fly Over	Course °M(°T)	Magnetic Variation	Distance (NM)	Turn Direction	Altitude (ft)	Speed Limit (kt)	Navigation Specification
IF	GEMMA	-	-	-	-	-	+6000	-	RNAV1/RNP1 (1)
TF	RN605	-	075° (078.8)	-	6.8	-	+8000	-210	RNAV1/RNP1 (1)
TF	VUNHO	-	346° (349.6)	-	12.0	L	+FL110	-	RNAV1/RNP1 (1)
TF	TEA	-	316° (319.7°)	-	28.9	-	+FL130	-	RNAV1/RNP1 (1)
TF	SIPRO	-	301° (304.4°)	-	15.9	-	-	-	RNAV1/RNP1 (1)

ALAXI 7J

Path Terminator	Waypoint Identifier	Fly Over	Course °M(°T)	Magnetic Variation	Distance (NM)	Turn Direction	Altitude (ft)	Speed Limit (kt)	Navigation Specification
IF	GEMMA	-	-	-	-	-	+6000	-	RNAV1/RNP1 (1)
TF	RN605	-	075° (078.8)	-	6.8	-	+8000	-210	RNAV1/RNP1 (1)
TF	VUNHO	-	346° (349.6)	-	12.0	L	+FL110	-	RNAV1/RNP1 (1)
TF	TEA	-	316° (319.7°)	-	28.9	-	+FL130	-	RNAV1/RNP1 (1)
TF	ALAXI	-	310° (313.3°)	-	38.5	-	-	-	RNAV1/RNP1 (1)

1) For "monitoring and alerting" reasons, RNP1 specification is required in case of radar service unavailability or degradation

WAYPOINT LIST

Waypoint Identifier	Coordinates
RN605	40°43'56.68" N 014°25'54.48" E
RN617	40°30'10.22" N 014°02'59.33" E
RN703	40°58'41.80" N 014°29'13.20" E

Intenzionalmente bianca

Intentionally left blank

SID RNAV1/RNP1 RWY 06

NAPOLI/CAPODICHINO

TRANSITION ALT 8000

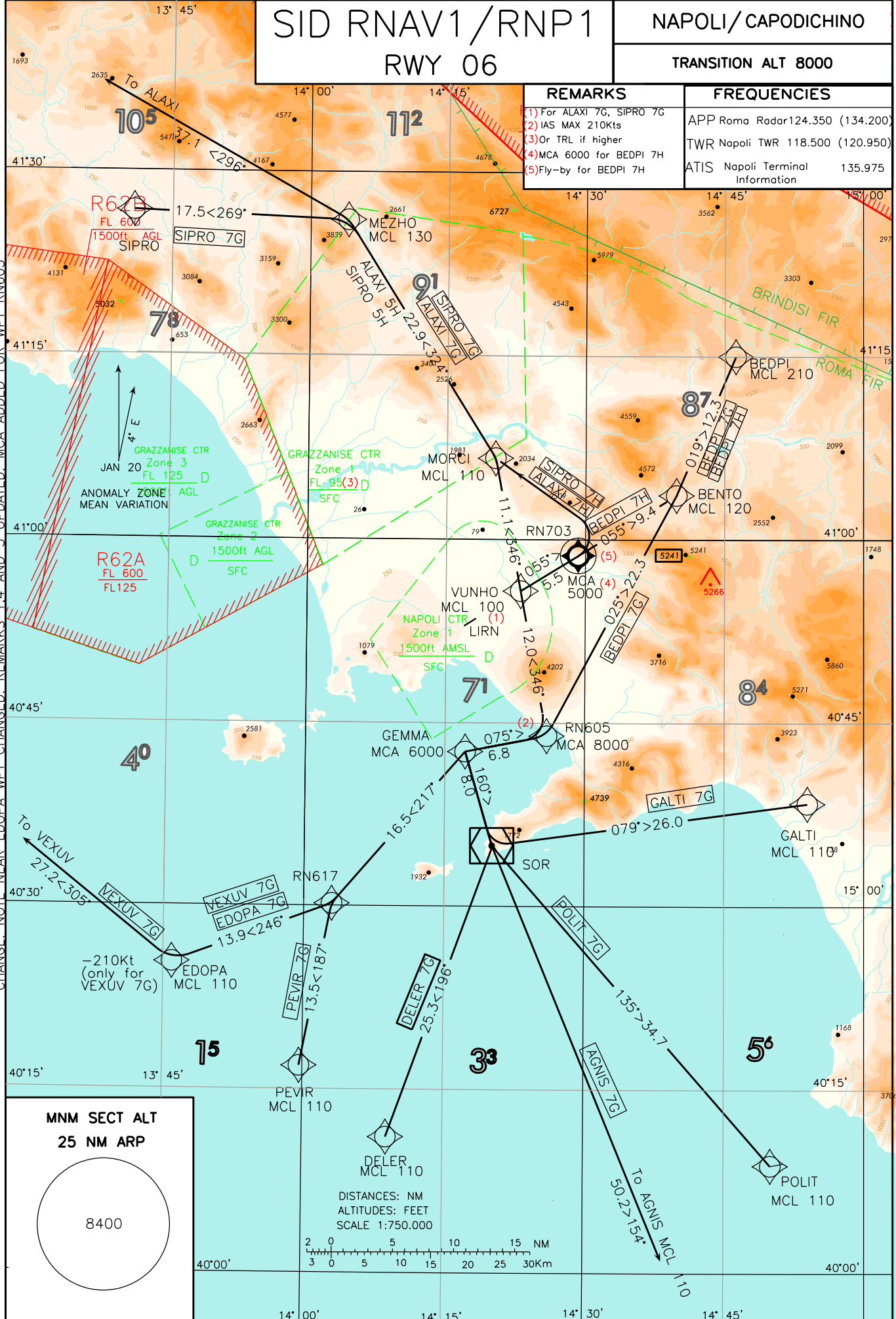
REMARKS

- (1) For ALAXI 7G, SIPRO 7G
- (2) IAS MAX 210Kts
- (3) Or TRL if higher
- (4) MCA 6000 for BEDPI 7H
- (5) Fly-by for BEDPI 7H

FREQUENCIES

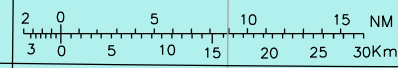
APP Roma Radar	124.350 (134.200)
TWR Napoli TWR	118.500 (120.950)
ATIS Napoli Terminal Information	135.975

CHANGE: NOTE NEAR EDOPA WPT CHANGED. REMARKS 1, 4 AND 5 UPDATED. MCA ADDED FOR WPT RN605



MNM SECT ALT
25 NM ARP

8400



SID RNAV1 or RNP1 RWY06 Napoli / Capodichino**AGNIS 7G**

Path Terminator	Waypoint Identifier	Fly Over	Course °M(°T)	Magnetic Variation	Distance (NM)	Turn Direction	Altitude (ft)	Speed Limit (kt)	Navigation Specification
IF	GEMMA	-	-	-	-	-	+6000	-	RNAV1/RNP1 (1)
TF	SOR	-	160° (163.8)	-	8.0	-	-	-	RNAV1/RNP1 (1)
TF	AGNIS	-	154° (157.5)	-	50.2	-	+FL110	-	RNAV1/RNP1 (1)

DELER 7G

Path Terminator	Waypoint Identifier	Fly Over	Course °M(°T)	Magnetic Variation	Distance (NM)	Turn Direction	Altitude (ft)	Speed Limit (kt)	Navigation Specification
IF	GEMMA	-	-	-	-	-	+6000	-	RNAV1/RNP1 (1)
TF	SOR	-	160° (163.8)	-	8.0	-	-	-	RNAV1/RNP1 (1)
TF	DELER	-	196° (199.4)	-	25.3	-	+FL110	-	RNAV1/RNP1 (1)

EDOPA 7G

Path Terminator	Waypoint Identifier	Fly Over	Course °M(°T)	Magnetic Variation	Distance (NM)	Turn Direction	Altitude (ft)	Speed Limit (kt)	Navigation Specification
IF	GEMMA	-	-	-	-	-	+6000	-	RNAV1/RNP1 (1)
TF	RN617	-	217° (221.0)	-	16.5	-	-	-	RNAV1/RNP1 (1)
TF	EDOPA	-	246° (250.0)	-	13.9	-	+FL110	-	RNAV1/RNP1 (1)

GALTI 7G

Path Terminator	Waypoint Identifier	Fly Over	Course °M(°T)	Magnetic Variation	Distance (NM)	Turn Direction	Altitude (ft)	Speed Limit (kt)	Navigation Specification
IF	GEMMA	-	-	-	-	-	+6000	-	RNAV1/RNP1 (1)
TF	SOR	-	160° (163.8)	-	8.0	-	-	-	RNAV1/RNP1 (1)
TF	GALTI	-	079° (082.2)	-	26.0	-	+FL110	-	RNAV1/RNP1 (1)

VEXUV 7G

Path Terminator	Waypoint Identifier	Fly Over	Course °M(°T)	Magnetic Variation	Distance (NM)	Turn Direction	Altitude (ft)	Speed Limit (kt)	Navigation Specification
IF	GEMMA	-	-	-	-	-	+6000	-	RNAV1/RNP1 (1)
TF	RN617	-	217° (221.0)	-	16.5	-	-	-	RNAV1/RNP1 (1)
TF	EDOPA	-	246° (250.0)	-	13.9	-	+FL110	-210	RNAV1/RNP1 (1)
TF	VEXUV	-	305° (308.8°)	-	27.2	-	-	-	RNAV1/RNP1 (1)

PEVIR 7G

Path Terminator	Waypoint Identifier	Fly Over	Course °M(°T)	Magnetic Variation	Distance (NM)	Turn Direction	Altitude (ft)	Speed Limit (kt)	Navigation Specification
IF	GEMMA	-	-	-	-	-	+6000	-	RNAV1/RNP1 (1)
TF	RN617	-	217° (221.0)	-	16.5	-	-	-	RNAV1/RNP1 (1)
TF	PEVIR	-	187° (190.9)	-	13.5	-	+FL110	-	RNAV1/RNP1 (1)

BEDPI 7G

Path Terminator	Waypoint Identifier	Fly Over	Course °M(°T)	Magnetic Variation	Distance (NM)	Turn Direction	Altitude (ft)	Speed Limit (kt)	Navigation Specification
IF	GEMMA	-	-	-	-	-	+6000	-	RNAV1/RNP1 (1)
TF	RN605	-	075° (078.8)	-	6.8	-	+8000	-210	RNAV1/RNP1 (1)
TF	BENTO	-	025° (028.1°)	-	22.3	-	+FL120	-	RNAV1/RNP1 (1)
TF	BEDPI	-	019° (022.3)	-	12.3	-	+FL210	-	RNAV1/RNP1 (1)

SIPRO 7G

Path Terminator	Waypoint Identifier	Fly Over	Course °M(°T)	Magnetic Variation	Distance (NM)	Turn Direction	Altitude (ft)	Speed Limit (kt)	Navigation Specification
IF	GEMMA	-	-	-	-	-	+6000	-	RNAV1/RNP1 (1)
TF	RN605	-	075° (078.8)	-	6.8	-	+8000	-210	RNAV1/RNP1 (1)
TF	VUNHO	-	346° (349.6)	-	12.0	L	+FL100	-	RNAV1/RNP1 (1)
TF	MORCI	-	346° (349.0°)	-	11.1	-	+FL110	-	RNAV1/RNP1 (1)
TF	MEZHO	-	324° (328.0°)	-	22.9	-	+FL130	-	RNAV1/RNP1 (1)
TF	SIPRO	-	269° (272.4°)	-	17.5	-	-	-	RNAV1/RNP1 (1)

ALAXI 7G

Path Terminator	Waypoint Identifier	Fly Over	Course °M(°T)	Magnetic Variation	Distance (NM)	Turn Direction	Altitude (ft)	Speed Limit (kt)	Navigation Specification
IF	GEMMA	-	-	-	-	-	+6000	-	RNAV1/RNP1 (1)
TF	RN605	-	075° (078.8)	-	6.8	-	+8000	-210	RNAV1/RNP1 (1)
TF	VUNHO	-	346° (349.6)	-	12.0	L	+FL100	-	RNAV1/RNP1 (1)
TF	MORCI	-	346° (349.0°)	-	11.1	-	+FL110	-	RNAV1/RNP1 (1)
TF	MEZHO	-	324° (328.0°)	-	22.9	-	+FL130	-	RNAV1/RNP1 (1)
TF	ALAXI	-	296° (299.3°)	-	37.1	-	-	-	RNAV1/RNP1 (1)

POLIT 7G

Path Terminator	Waypoint Identifier	Fly Over	Course °M(°T)	Magnetic Variation	Distance (NM)	Turn Direction	Altitude (ft)	Speed Limit (kt)	Navigation Specification
IF	GEMMA	-	-	-	-	-	+6000	-	RNAV1/RNP1 (1)
TF	SOR	-	160° (163.8)	-	8.0	-	-	-	RNAV1/RNP1 (1)
TF	POLIT	-	135° (138.9°)	-	34.7	-	+FL110	-	RNAV1/RNP1 (1)

SIPRO 7H (3)

Path Terminator	Waypoint Identifier	Fly Over	Course °M(°T)	Magnetic Variation	Distance (NM)	Turn Direction	Altitude (ft)	Speed Limit (kt)	Navigation Specification
IF	VUNHO	-	-	-	-	-	+2000	-	RNAV1/RNP1 (1)
TF	RN703	Y	055° (058.2°)	-	5.5	-	+5000	-220	RNAV1/RNP1 (1)
DF	MORCI	-	-	-	-	L	+FL110	-220	RNAV1/RNP1 (1)
TF	MEZHO	-	324° (328.0°)	-	22.9	-	+FL130	-	RNAV1/RNP1 (1)
TF	SIPRO	-	269° (272.4°)	-	17.5	-	-	-	RNAV1/RNP1 (1)

BEDPI 7H (2)

Path Terminator	Waypoint Identifier	Fly Over	Course °M(°T)	Magnetic Variation	Distance (NM)	Turn Direction	Altitude (ft)	Speed Limit (kt)	Navigation Specification
IF	VUNHO	-	-	-	-	-	+2000	-	RNAV1/RNP1 (1)
TF	RN703	-	055° (058.2°)	-	5.5	-	+6000	-	RNAV1/RNP1 (1)
TF	BENTO	-	055° (058.3°)	-	9.4	-	+FL120	-	RNAV1/RNP1 (1)
TF	BEDPI	-	019° (022.3)	-	12.3	-	+FL210	-	RNAV1/RNP1 (1)

ALAXI 7H (3)

Path Terminator	Waypoint Identifier	Fly Over	Course °M(°T)	Magnetic Variation	Distance (NM)	Turn Direction	Altitude (ft)	Speed Limit (kt)	Navigation Specification
IF	VUNHO	-	-	-	-	-	+2000	-	RNAV1/RNP1 (1)
TF	RN703	Y	055° (058.2°)	-	5.5	-	+5000	-220	RNAV1/RNP1 (1)
DF	MORCI	-	-	-	-	L	+FL110	-220	RNAV1/RNP1 (1)
TF	MEZHO	-	324° (328.0°)	-	22.9	-	+FL130	-	RNAV1/RNP1 (1)
TF	ALAXI	-	296° (299.3°)	-	37.1	-	-	-	RNAV1/RNP1 (1)

- 1) For "monitoring and alerting" reasons, RNP1 specification is required in case of radar service unavailability or degradation
- 2) For ATC reasons use max climb gradient until leaving FL210. In any case the minimum acceptable climb gradient is 650 ft/NM (10.8%).
- 3) For ATC reasons climb gradient 8.5% until passing FL110

WAYPOINT LIST

Waypoint Identifier	Coordinates
RN605	40°43'56.68" N 014°25'54.48" E
RN617	40°30'10.22" N 014°02'59.33" E
RN703	40°58'41.80" N 014°29'13.20" E