

SCALE 1:250.000



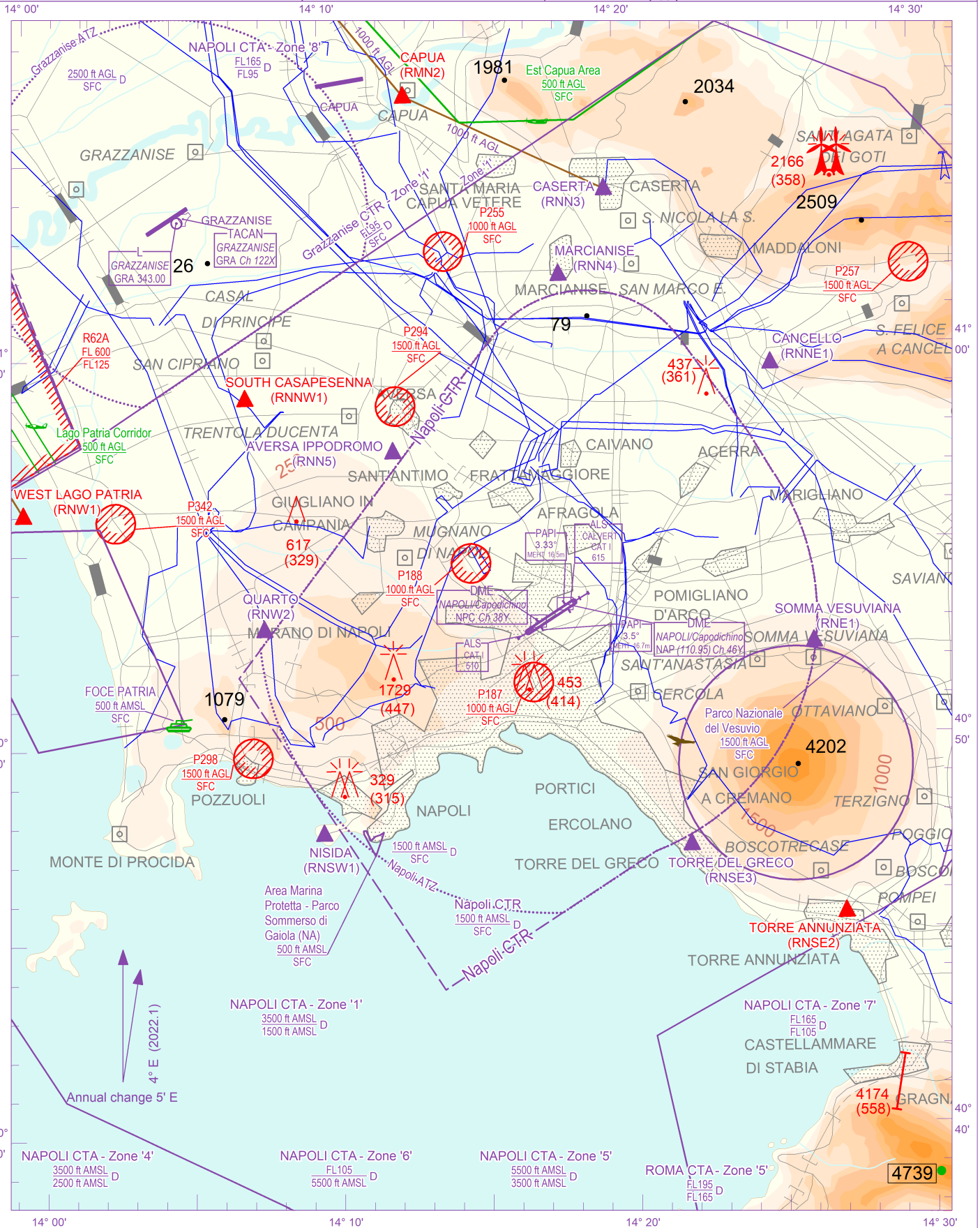
FIS Roma Information 125.750 / 129.575 / 134.125
 APP Roma Radar 124.350 (134.200)
 TWR Napoli TWR 118.500 (120.950)
 ATIS Napoli Terminal Information 135.975

AD ELEV

294

L
I
R
N

NAPOLI/CAPODICHINO



CHANGE: NEW PROTECTED AREA 'AREA MARINA PROTETTA - PARCO SOMMERSO DI GAIOLA' (NA)

AIRSPACE CLASSIFICATION See AIP ENR 1.4
TRANSITION ALT 8000 FT
ELEV AND ALT IN FT IF NOT OTHERWISE INDICATED

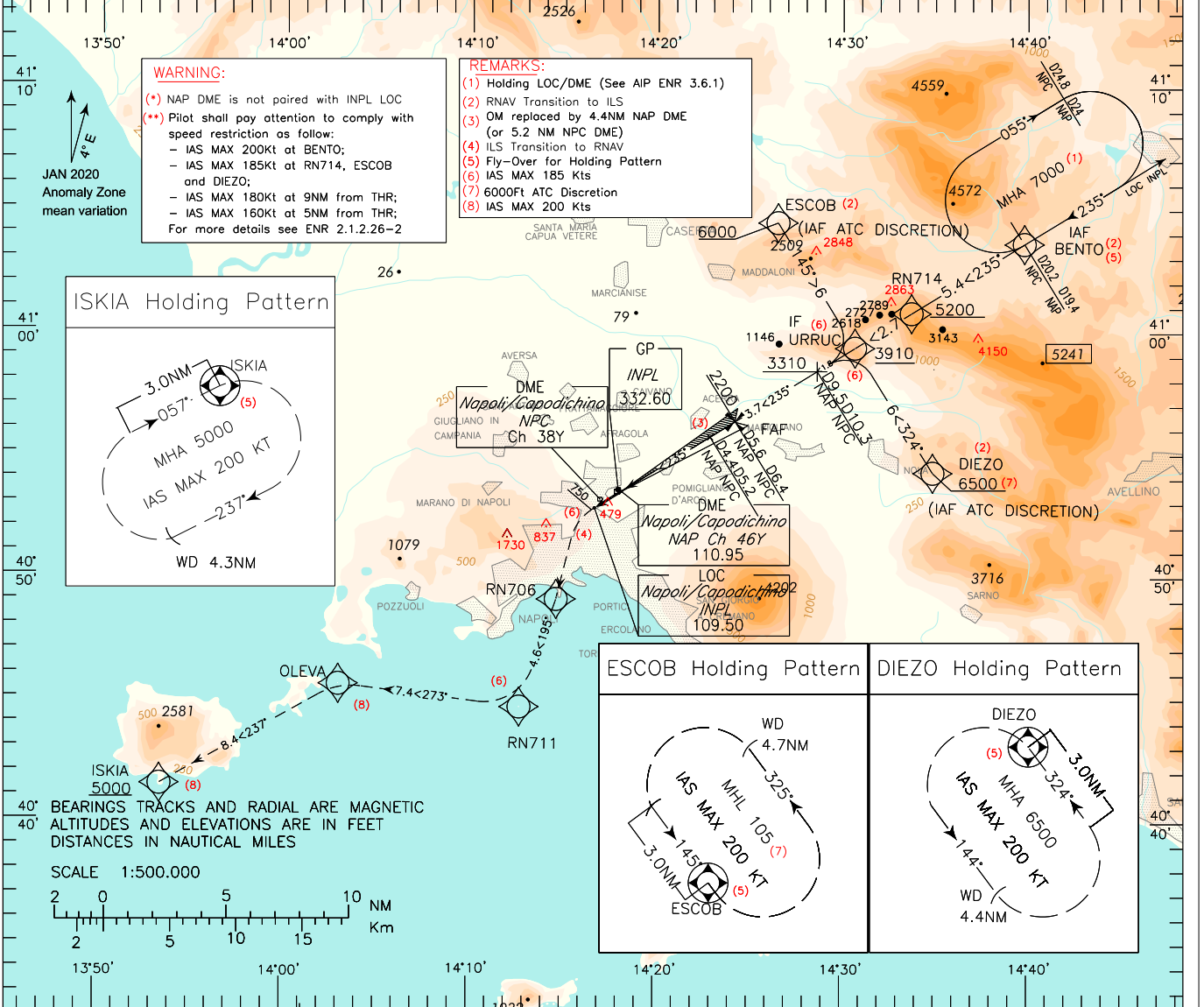
REMARK

WARNING

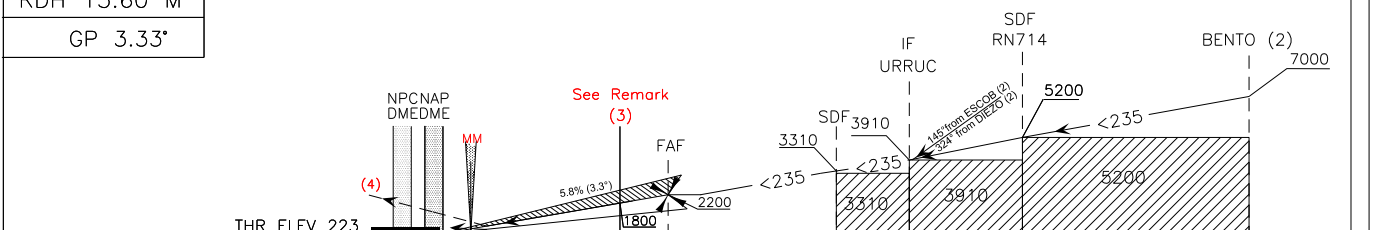
DOC. 8168 ED.7 – 2020

CHANGE: MISSED APPROACH DESCRIPTION UPDATED. OM REPLACED BY DME READING

APP	Roma Radar	124.350 (134.200)	AD ELEV	LIRN	NAPOLI CAPODICHINO
TWR	Napoli TWR	118.500 (120.950)	294		ILS-Z RWY 24
ATIS	Napoli Terminal Information	135.975			



TRANSITION ALT 8000
 MISSED APPROACH: Continue RWY heading climbing to 5000FT. At 750FT turn left (IAS MAX 185 Kts) direct to RN706 then proceed via RN711-OLEVA-ISKIA to join Missed Approach Holding Pattern



NAP DME	D4	D2	D0	D1	D2	D3	D4.4	D5.6	D7	D8	D9.5	D11.3	D14	D16	D18	D20
NPC DME	D4	D2	D0	D2	D4	D5.2	D6.4	D8	D10.3	D12.1	D14	D16	D18	D20		

STRAIGHT IN APPROACH	OCA(OCH)	A				B				C				D				FT per MIN	CS	OM - MM	MM - THR	DIST NAP DME	ALT	MNM SECT 25NM	ALT ARP
		ILS	MNM Climb Gradient 5%	518 (295)	529 (306)	540 (317)	550 (327)	638 (415)	649 (426)	660 (437)	670 (447)	470	80	2 : 44	0 : 29	5 DME	2000								
		ILS	MNM Climb Gradient 2.5%	638 (415)	649 (426)	660 (437)	670 (447)	590	100	2 : 11	0 : 23	4 DME	1645												
								705	120	1 : 50	0 : 20	3 DME	1290												
								825	140	1 : 34	0 : 17	2 DME	935												
								945	160	1 : 22	0 : 15	1 DME	580												

TABULAR DESCRIPTION

ILS Z RWY24 – Instrument Approach procedure

RNAV to ILS TRANSITION - APPROACH FROM BENTO											
Serial Number	Path Terminator	Waypoint Identifier	Fly Over	Course °M(°T)	Magnetic Variation	Distance (NM)	Turn Direction	Altitude (ft)	Speed Limit (kt)	VPA/TCH	Navigation Specification
010	IF	BENTO (1)	-	-	-	-	-	+7000	-200	-	RNAV1/RNP1 (2)
020	TF	RN714	-	235° (238.4°)	-	5.4	-	+5200	-185	-	RNAV1/RNP1 (2)
030	TF	URRUC	-	235° (238.4°)	-	2.7	-	+3910	-	-	RNAV1/RNP1 (2)
RNAV to ILS TRANSITION - APPROACH FROM ESCOB (3)											
010	IF	ESCOB	-	-	-	-	-	+6000	-185	-	RNAV1/RNP1 (2)
020	TF	URRUC	-	145° (148.3°)	-	6.0	-	+3910	-185	-	RNAV1/RNP1 (2)
RNAV to ILS TRANSITION - APPROACH FROM DIEZO (3)											
010	IF	DIEZO	-	-	-	-	-	+6500 (4)	-185	-	RNAV1/RNP1 (2)
020	TF	URRUC	-	324° (328.0°)	-	6.0	-	+3910	-185	-	RNAV1/RNP1 (2)
ILS to RNAV TRANSITION - MISSED APPROACH											
010	CA	-	-	235° (238.4°)	3.6	-	-	+750	-	-	RNAV1/RNP1 (2)
020	DF	RN706	-	-	-	-	-	-	-185	-	RNAV1/RNP1 (2)
030	TF	RN711	-	195° (198.6°)	-	4.6	-	-	-185	-	RNAV1/RNP1 (2)
040	TF	OLEVA	-	273° (277.0°)	-	7.4	-	-	-200	-	RNAV1/RNP1 (2)
050	TF	ISKIA	-	237° (240.5°)	-	8.4	-	+5000	-200	-	RNAV1/RNP1(2)
060	HM	ISKIA	Y	057° (060.5°)	-	-	-	+5000	-200	-	RNAV
Path Terminator	Waypoint Identifier	Inbound Course °M (°T)	Leg Distance (NM)	Waypoint Distance (NM)	Turn Direction	Minimum Altitude (FT)	Maximum Altitude (FL)	Speed Limit (kt)	Magnetic Variation (°)		
HM	ISKIA	057° (060.0°)	3.0	4.3	R	5000	-	-200	3.6		
HM	ESCOB (3)	145° (148.0°)	3.0	4.7	L	FL105 (4)	-	-200	3.6		
HM	DIEZO (3)	324° (328.0°)	3.0	4.4	L	6500	-	-200	3.6		

(1) Holding LOC/DME over BENTO (see ENR 3.6.1)

(2) For "monitoring and alerting" reasons, RNP1 specification is required in case of radar service unavailability or degradation

(3) ATC Discretion

(4) 6000 FT ATC Discretion

WAYPOINT LIST

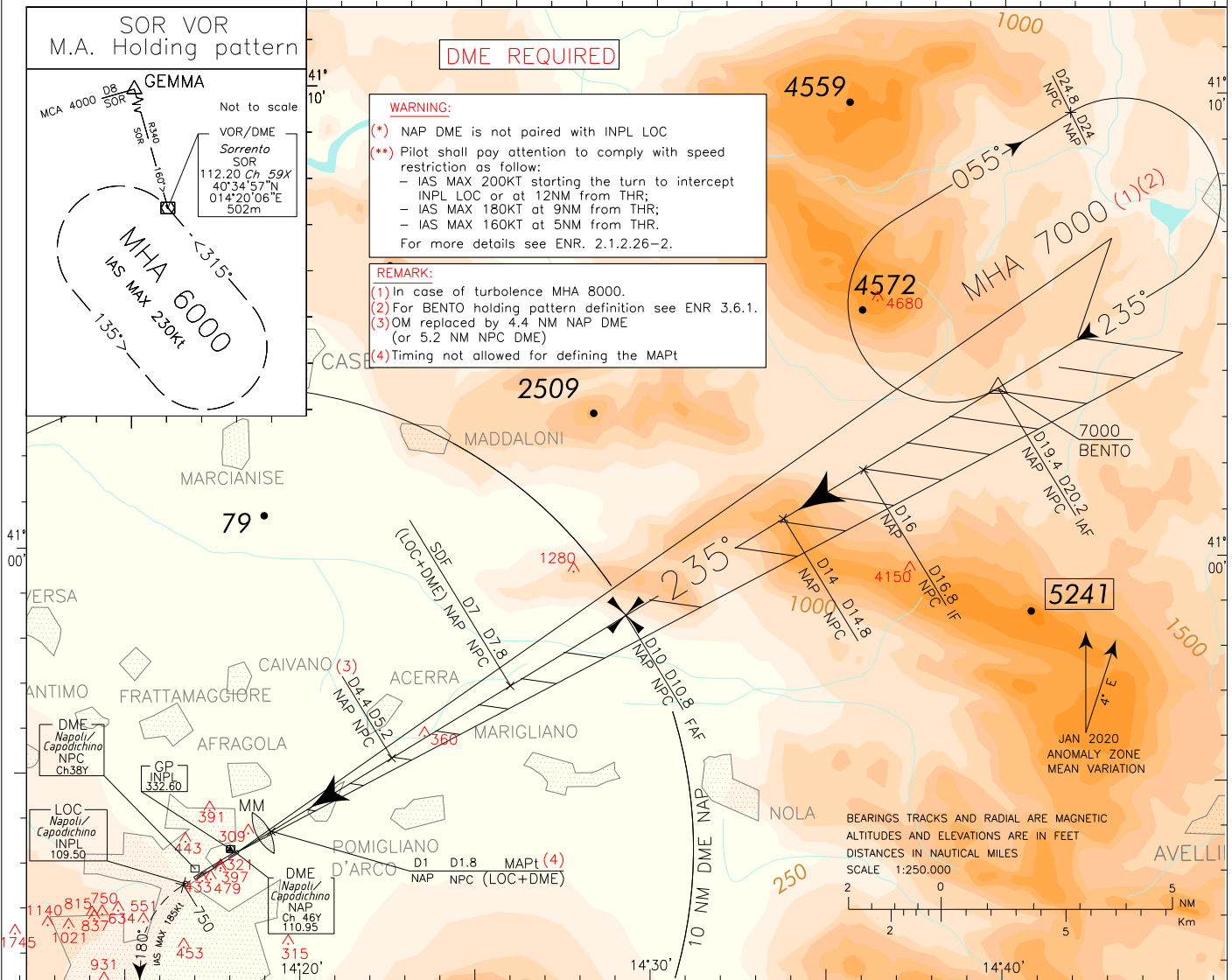
Waypoint Identifier	Coordinates
RN714	41°00'48.37"N-014°33'43.75"E
RN706	40°49'05.18"N-014°14'40.53"E
RN711	40°44'40.7980"N-014°12'43.6053"E

FIX/POINT	Coordinates (WGS84)
INT LOC INPL/9.5NM NAP DME	40°58'26.10"N-014°28'39.44"E
FAF (INT LOC INPL/5.6NM NAP DME)	40°56'21.13"N-014°024'13.45"E

APP	Roma Radar	124.350 (134.200)	AD ELEV	LIRN	NAPOLI/CAPODICHINO
TWR	Napoli TWR	118.500 (120.950)	294		ILS or LOC Y RWY 24
ATIS	Napoli Terminal Information	135.975			

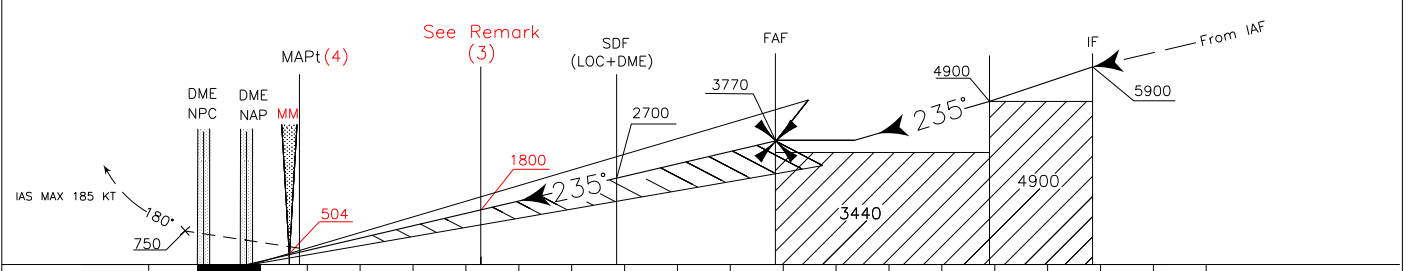
DOC 8168 – ED.7 – 2020

CHANGE: OM REPLACED BY DME READING



TRANSITION ALT 8000 MISSED APPROACH: Proceed on TR 235° climbing to 6000 ft; at 750 ft, not before 1 NM NAP DME (1.8 NM NPC DME), turn left on TR 180° (IAS MAX 185 kt) to join RDL 340 SOR VOR to GEMMA point (MCA 4000 ft). Then proceed bound to SOR VOR holding pattern.

RDH 15.6 M
GP 3.33'



NM	2	THR	ELEV	223	2	3	4	5	6	7	8	9	10	11	12	13	14	15	16	17	18	NM
NAP DME		0	D0.8	D1			D4.4		D7			D10		D14		D16						NAP DME
NPC DME		0	D1.6	D1.8			D5.2		D7.8			D10.8		D14.8		D16.8						NPC DME

OCA (OCH)		A	B	C	D	GS	FT PER MIN	OM-MM	MM-THR	DIST NAP DME	ALT	MSA 25NM SOR VOR
STRAIGHT IN APPROACH	ILS	518 (295)	529 (306)	540 (317)	550 (327)	80	470	2:44	0:29	6 DME	2350	
	MNM Climb Gradient 5%					100	590	2:11	0:23	5 DME	2000	
	MNM Climb Gradient 2.5%	638 (415)	649 (426)	660 (437)	670 (447)	120	705	1:50	0:20	4 DME	1645	
	LOC+DME	700 (477)				140	825	1:34	0:17	3 DME	1290	
CIRCLING		1200 (906)		2160 (1866)		160	945	1:22	0:15	2 DME	935	

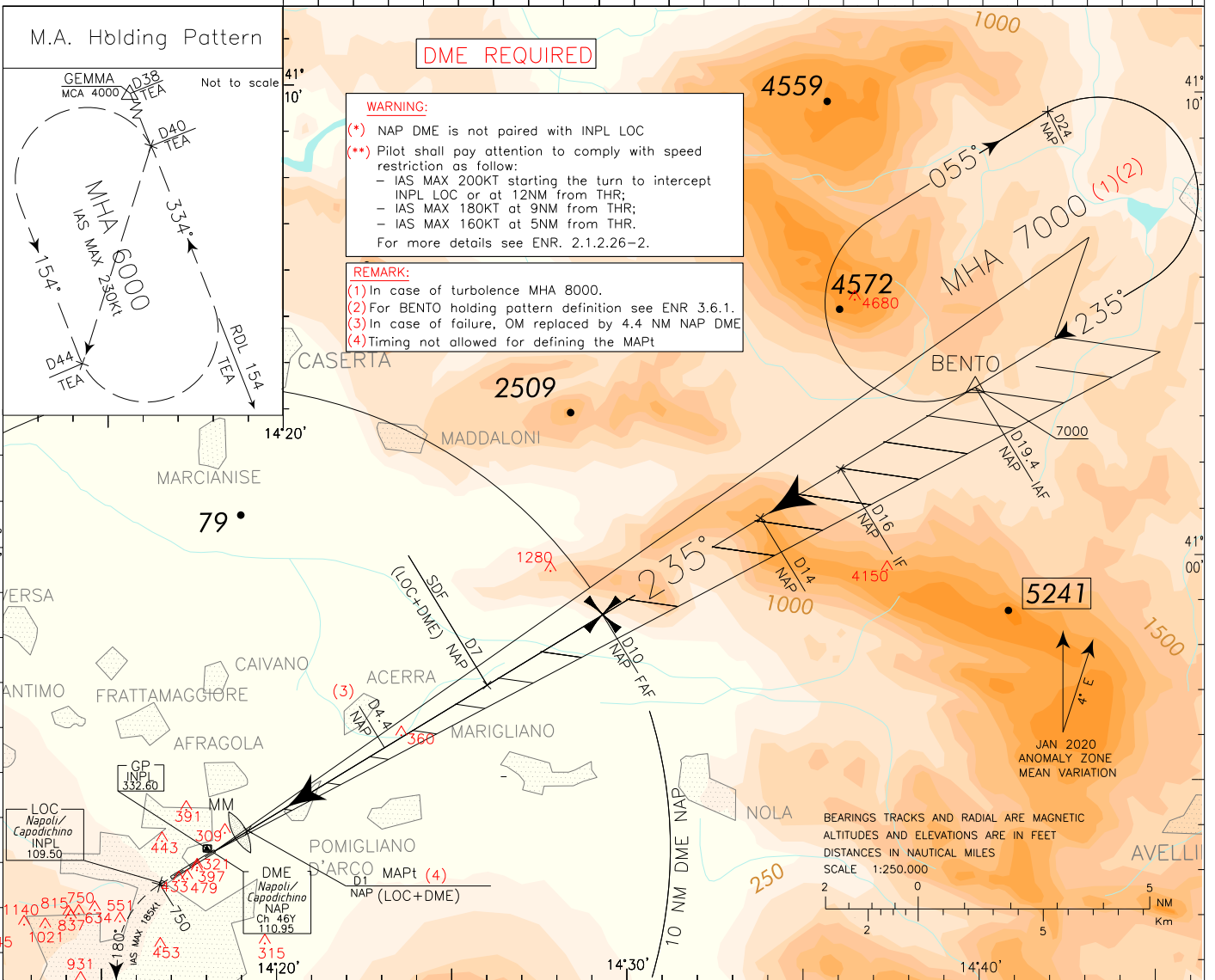
FIX/POINT	Coordinates (WGS84)
IAF	41°03'38.6"N 014°39'48.8"E
IF	41°01'51.9"N 014°35'59.6"E
INT LOC INPL/14NM NAP DME	41°00'46.9"N 014°33'40.7"E
FAF	40°58'41.8"N 014°29'13.2"E
INT LOC INPL/7NM NAP DME (LOC+DME)	40°57'06.1"N 014°25'49.5"E
MAPt (LOC+DME)	40°53'56.6"N 014°19'06.2"E

ICAO - INSTRUMENT APPROACH CHART

AD 2 LIRN 5-7

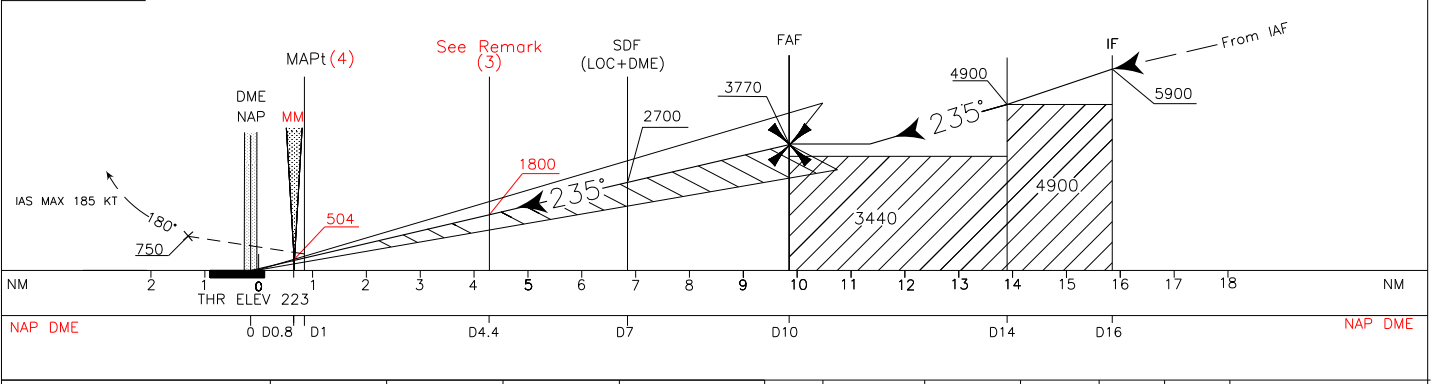
APP	Roma Radar	124.350 (134.200)	AD ELEV	LIRN	NAPOLI/CAPODICHINO
TWR	Napoli TWR	118.500 (120.950)	294		ILS or LOC X RWY 24
ATIS	Napoli Terminal Information	135.975			

DOC 8168 - ED.7 - 2020
CHANGE: POM DME WITHDRAWN. OM REPLACED BY DME READING



TRANSITION ALT 8000
RDH 15.6 M
GP 3.33'

MISSED APPROACH: Proceed on TR 235° climbing to 6000 ft; at 750 ft, not before 1 NM NAP DME (3.5 NM POM DME), turn left on TR 180° (IAS MAX 185 kt) to join RDL 154° TEA VOR to GEMMA point (MCA 4000 ft). Then proceed missed approach holding pattern.



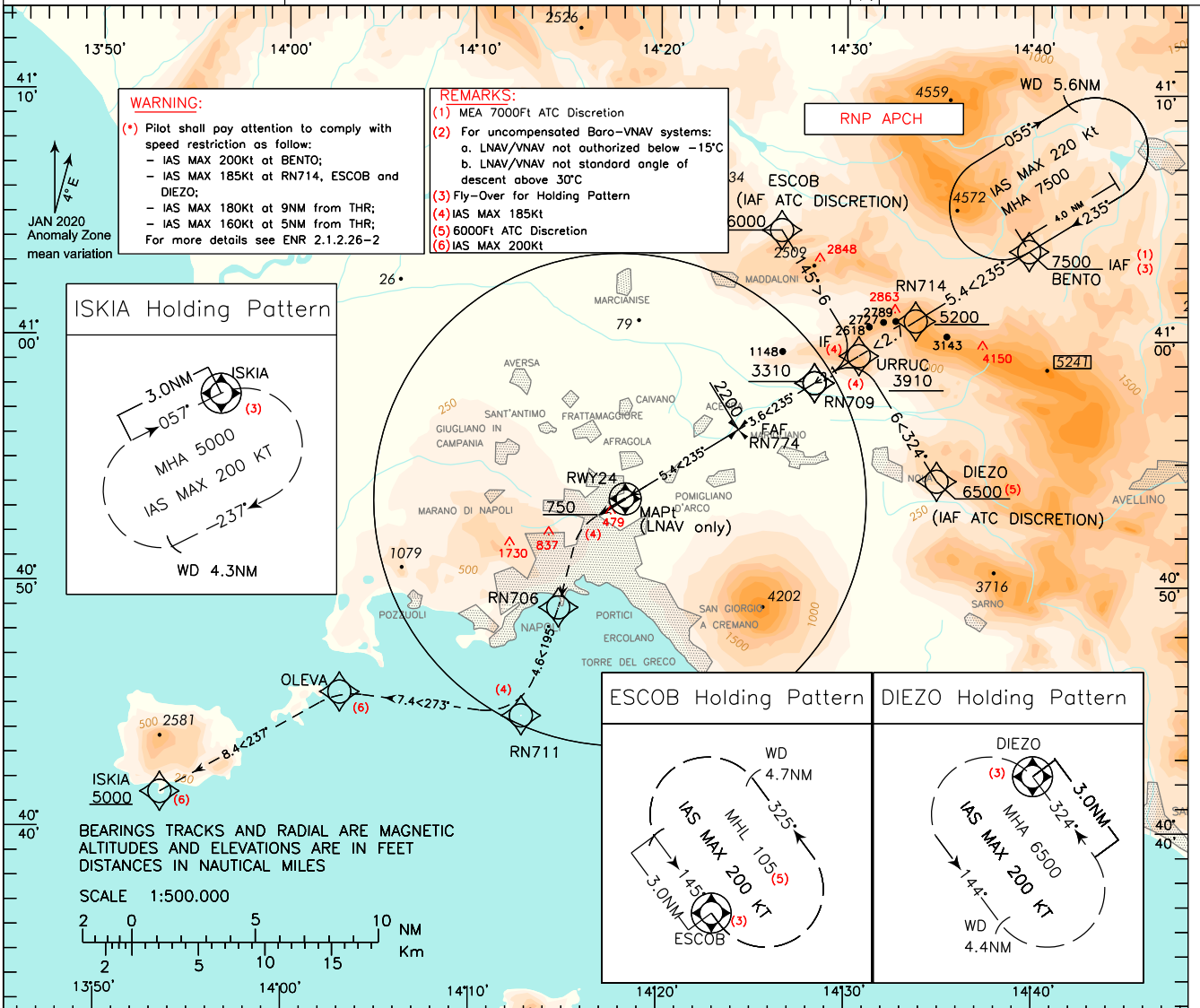
OCA (OCH)		A	B	C	D	GS	FT PER MIN	OM-MM 3.65 NM	MM-THR 0.65 NM	DIST NAP DME	ALT	MSA 25NM SOR VOR 185 7500 4000 315
STRAIGHT IN APPROACH	ILS MNM Climb Gradient 5%	518 (295)	529 (306)	540 (317)	550 (327)	80	470	2:44	0:29	6 DME	2350	
	ILS MNM Climb Gradient 2.5%	638 (415)	649 (426)	660 (437)	670 (447)	100	590	2:11	0:23	5 DME	2000	
	LOC+DME	700 (477)				120	705	1:50	0:20	4 DME	1645	
CIRCLING		1200 (906)		2160 (1866)		140	825	1:34	0:17	3 DME	1290	
						160	945	1:22	0:15	2 DME	935	

FIX/POINT	Coordinates (WGS84)
IAF	41°03'38.6"N 014°39'48.8"E
IF	41°01'51.9"N 014°35'59.6"E
INT LOC INPL/14NM NAP DME	41°00'46.9"N 014°33'40.7"E
FAF	40°58'41.8"N 014°29'13.2"E
INT LOC INPL/7NM NAP DME (LOC+DME)	40°57'06.1"N 014°25'49.5"E
MAPt (LOC+DME)	40°53'56.6"N 014°19'06.2"E

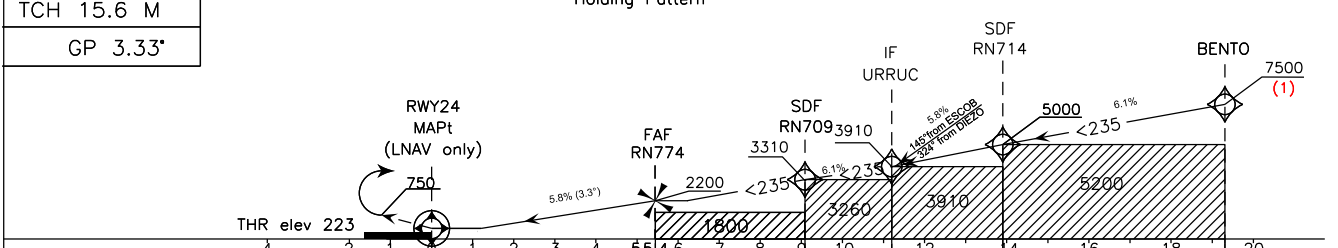
DOC. 8168 ED.7 - 2020

CHANGE: REPRINTING

APP	Roma Radar	124.350 (134.200)	AD ELEV	LIRN	NAPOLI CAPODICHINO
TWR	Napoli TWR	118.500 (120.950)	294		RNP Z RWY 24
ATIS	Napoli Terminal Information	135.975			



TRANSITION ALT 8000
 MISSED APPROACH: Continue RWY heading climbing to 5000ft. At 750ft turn left (IAS MAX 185 Kts) direct to RN706 then proceed via RN711-OLEVA-ISKIA to join Missed Approach Holding Pattern



STRAIGHT IN APPROACH	OCA(OCH)	A	B	C	D	FT per MIN	GS	NM TO THR24	ALT	MNM SECT ALT 25NM 8400
		LNAV/VNAV	670 (447)	680 (457)	690 (467)	700 (477)	470	80	5.4	
LNAV		730 (507)				590	100	4	1704	
		705	120	3	1350					
		825	140	2	996					
CIRCLING		1200 (906)	2160 (1866)		945	160	1	642		

TABULAR DESCRIPTION

RNP Z RWY24 – Instrument Approach procedure

RNP APPROACH FROM BENTO											
Serial Number	Path Terminator	Waypoint Identifier	Fly Over	Course °M(°T)	Magnetic Variation	Distance (NM)	Turn Direction	Altitude (ft)	Speed Limit (kt)	VPA/ TCH	Navigation Specification
010	IF	BENTO	-	-	-	-	-	+7500 (1)	-200	-	RNP APCH
020	TF	RN714	-	235° (238.4°)	-	5.4	-	+5200	-185	-	RNP APCH
030	TF	URRUC	-	235° (238.4°)	-	2.7	-	+3910	-	-	RNP APCH
RNP APPROACH FROM ESCOB(3)											
010	IF	ESCOB	-	-	-	-	-	+6000	-185	-	RNP APCH
020	TF	URRUC	-	145° (148.3°)	-	6.0	-	+3910	-185	-	RNP APCH
RNP APPROACH FROM DIEZO(3)											
010	IF	DIEZO	-	-	-	-	-	+6500 (2)	-185	-	RNP APCH
020	TF	URRUC	-	324° (328.0°)	-	6.0	-	+3910	-185	-	RNP APCH
010	IF	URRUC	-	-	-	-	-	+3910	-185	-	RNP APCH
020	TF	RN709	-	235° (238.3°)	-	2.1	-	+3310	-	-	RNP APCH
030	TF	RN774	-	235° (238.3°)	-	3.7	-	+2200	-	-	RNP APCH
040	TF	RWY24	Y	235° (238.3°)	-	5.4	-	-	-	-3.33/15.6	RNP APCH
050	CA	-	-	235° (238.3°)	3.6	-	-	+750	-	-	RNP APCH
060	DF	RN706	-	-	-	-	-	-	-185	-	RNP APCH
070	TF	RN711	-	195° (198.6°)	-	4.6	-	-	-185	-	RNP APCH
080	TF	OLEVA	-	273° (277.0°)	-	7.4	-	-	-200	-	RNP APCH
090	TF	ISKIA	-	237° (240.5°)	-	8.4	-	+5000	200	-	RNP APCH
100	HM	ISKIA	Y	057° (060.5°)	-	-	-	+5000	-200	-	RNAV

Path Terminator	Waypoint Identifier	Inbound Course °M (°T)	Leg Distance (NM)	Waypoint Distance (NM)	Turn Direction	Minimum Altitude (FT)	Maximum Altitude (FL)	Speed Limit (kt)	Magnetic Variation (°)	Navigation Specification
HM	BENTO	235° (238.3°)	4.0	5.6	R	7500	-	-220	3.6	RNAV
HM	ISKIA	057° (060.0°)	3.0	4.3	R	5000	-	-200	3.6	RNAV
HM	ESCOB (3)	145° (148.0°)	3.0	4.7	L	FL105 (2)	-	-200	3.6	RNAV
HM	DIEZO (3)	324° (328.0°)	3.0	4.4	L	6500	-	-200	3.6	RNAV

- (1) MEA 7000 FT ATC discretion
(2) MEA 6000 FT ATC Discretion
(3) ATC Discretion

WAYPOINT LIST

Waypoint Identifier	Coordinates
RN714	41°00'48.3675"N-014°33'43.7524"E
RN709	40°58'16.5528"N-014°28'19.2910"E
RN774	40°56'21.1329"N-014°24'13.4479"E
RN706	40°49'05.1755"N-014°14'40.5285"E
RN711	40°44'40.7980"N-014°12'43.6053"E

Intenzionalmente bianca

Intentionally left blank

EGNOS CH 69948
E24A

APP *Roma Radar* 124.350 (134.200)
TWR *Napoli TWR* 118.500 (120.950)
ATIS *Napoli Terminal Information* 135.975

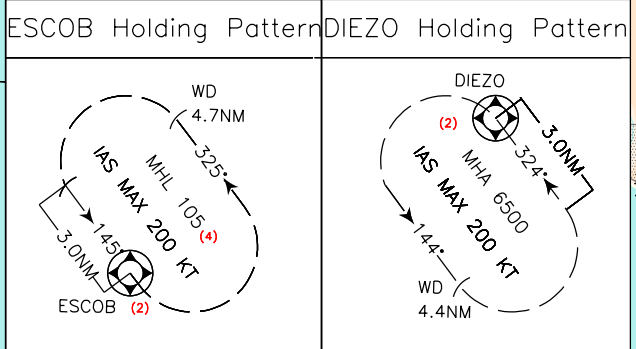
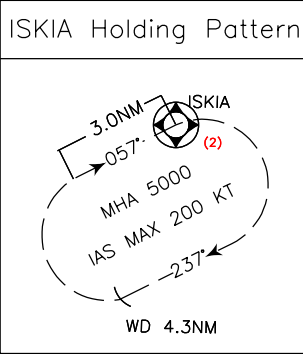
AD ELEV 294
LIRN
NAPOLI CAPODICHINO
RNP-Y RWY 24
(LPV Only)

DOC. 8168 ED.7 - 2020

CHANGE: DIEZO HOLDING PATTERN BOX UPDATED. MISSED APPROACH DESCRIPTION UPDATED.

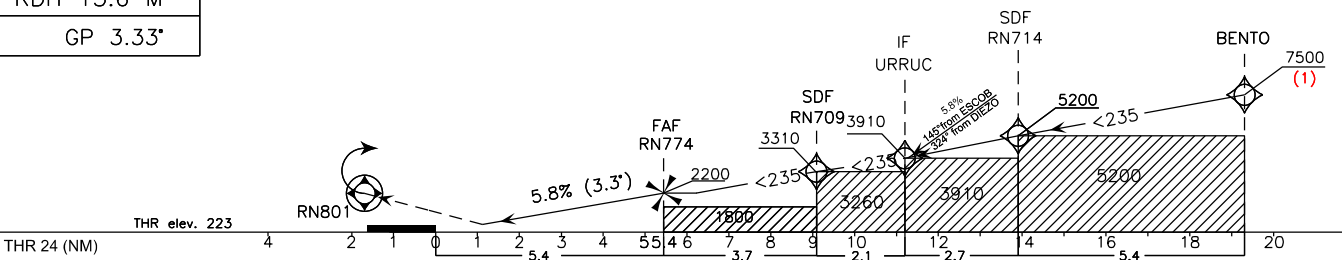
WARNING:
(*) Pilot shall pay attention to comply with speed restriction as follow:
- IAS MAX 200kt at BENTO;
- IAS MAX 185kt at RN714, ESCOB and DIEZO
- IAS MAX 180kt at 9NM from THR;
- IAS MAX 160kt at 5NM from THR;
For more details see ENR 2.1.2.26-2

REMARKS:
(1) MEA 7000ft ATC Discretion
(2) Fly-Over for Holding Pattern
(3) IAS MAX 185kt
(4) 6000ft ATC Discretion
(5) IAS MAX 200kt



BEARINGS TRACKS AND RADIAL ARE MAGNETIC
ALTITUDES AND ELEVATIONS ARE IN FEET
DISTANCES IN NAUTICAL MILES
SCALE 1:500.000

TRANSITION ALT 8000
MISSED APPROACH: Continue RWY heading climbing to 5000ft. Over RN801 (MCA 750ft) turn left (IAS MAX 185 Kts) direct to RN706 then proceed via RN711-OLEVA-ISKIA to join Missed Approach Holding Pattern



OCA(OCH)		A	B	C	D	FT per MIN	GS	NM TO THR24	ALT	MNM SECT ALT	
										25NM	ARP
STRAIGHT IN APPROACH	LPV	638 (415)	649 (426)	660 (437)	670 (447)	470	80	5	2200		
		590				100		4	1704		
		705				120		3	1350		
		825				140		2	996		
CIRCLING		1200 (906)		2160 (1866)		945	160	1	642		

TABULAR DESCRIPTION

RNP Y RWY24 – Instrument Approach procedure

RNP APPROACH FROM BENTO											
Serial Number	Path Terminator	Waypoint Identifier	Fly Over	Course °M(°T)	Magnetic Variation	Distance (NM)	Turn Direction	Altitude (ft)	Speed Limit (kt)	VPA/ TCH	Navigation Specification
010	IF	BENTO	-	-	-	-	-	+7500 (1)	-200	-	RNP APCH
020	TF	RN714	-	235° (238.4°)	-	5.4	-	+5200	-185	-	RNP APCH
030	TF	URRUC	-	235° (238.4°)	-			+3910	-	-	RNP APCH
RNP APPROACH FROM ESCOB (3)											
010	IF	ESCOB	-	-	-	-	-	+6000	-185	-	RNP APCH
020	TF	URRUC	-	145° (148.3°)	-	6.0	-	+3910	-185	-	RNP APCH
RNP APPROACH FROM DIEZO (3)											
010	IF	DIEZO	-	-	-	-	-	+6500 (2)	-185	-	RNP APCH
020	TF	URRUC	-	324° (328.0°)	-	6.0	-	+3910	-185	-	RNP APCH
010	IF	URRUC	-		-	-	-	+3910	-185	-	RNP APCH
020	TF	RN709	-	235° (238.3°)	-	2.1	-	+3310	-		RNP APCH
030	TF	RN774	-	235° (238.3°)	-	3.7	-	+2200			RNP APCH
040	-	RWY24	-	235° (238.3°)	-	5.4	-	-	-	-3.33/15.6	RNP APCH
050	CF	RN801	Y	235° (238.3°)	3.6	-	-	+750	-	-	RNP APCH
060	DF	RN706	-	-	-	-	-	-	-185	-	RNP APCH
070	TF	RN711	-	195° (198.6°)	-	4.6	-	-	-185	-	RNP APCH
080	TF	OLEVA	-	274° (277.0°)	-	7.4	-	-	-200	-	RNP APCH
090	TF	ISKIA	-	237° (240.5°)	-	8.4	-	+5000	-200		RNP APCH

Path Terminator	Waypoint Identifier	Inbound Course °M (°T)	Leg Distance (NM)	Waypoint Distance (NM)	Turn Direction	Minimum Altitude (FT)	Maximum Altitude (FL)	Speed Limit (kt)	Magnetic Variation (°)
HM	BENTO	235° (238.3°)	4.0	5.6	R	7500	-	-220	3.6
HM	ISKIA	057° (060.0°)	3.0	4.3	R	5000	-	-200	3.6
HM	ESCOB (3)	145° (148.0°)	3.0	4.7	L	FL 105 (2)	-	-200	3.6
HM	DIEZO (3)	324° (328.0°)	3.0	4.4	L	6500	-	-200	3.6

- (1) MEA 7000 FT ATC discretion
(2) MEA 6000 FT ATC Discretion
(3) ATC Discretion

WAYPOINT LIST

Waypoint Identifier	Coordinates
RN714	41°00'48.3675"N-014°33'43.7524"E
RN709	40°58'16.5528"N-014°28'19.2910"E
RN774	40°56'21.1329"N-014°24'13.4479"E
RN801	40°52'47.2276"N-014°16'39.1392"E
RN706	40°49'05.1755"N-014°14'40.5285"E
RN711	40°44'40.7980"N-014°12'43.6053"E

Input data

Operation Type	0
SBAS Provider	1 (EGNOS)
Airport Identifier	LIRN
Runway	24
Runway Letter	0 (None)
Approach Performance Designator	0
Route Indicator	Y
Reference Path Data Selector	0
Reference Path Identifier	E24A
LTP/FTP Latitude	405328.9500N
LTP/FTP Longitude	0141807.6035E
LTP/FTP Ellipsoidal Height (metres)	115.0
FPAP Latitude	405247.2275N
Delta FPAP Latitude (seconds)	-41.7225
FPAP Longitude	0141639.1390E
Delta FPAP Longitude (seconds)	-88.4645
Threshold Crossing Height	15.6
TCH Units Selector	1 (meters)
Glidepath Angle (degrees)	3.33
Course Width (metres)	105.00
Length Offset (metres)	0
HAL (metres)	40.0
VAL (metres)	35.0

Output data

Data Block	10 0E 12 09 0C 18 C8 00 01 34 32 05 EC 75 8C 11 E7 46 23 06 7E 18 0B BA FE DF 4C FD 38 81 4D 01 64 00 C8 AF 90 50 78 F4
Calculated CRC Value	905078F4

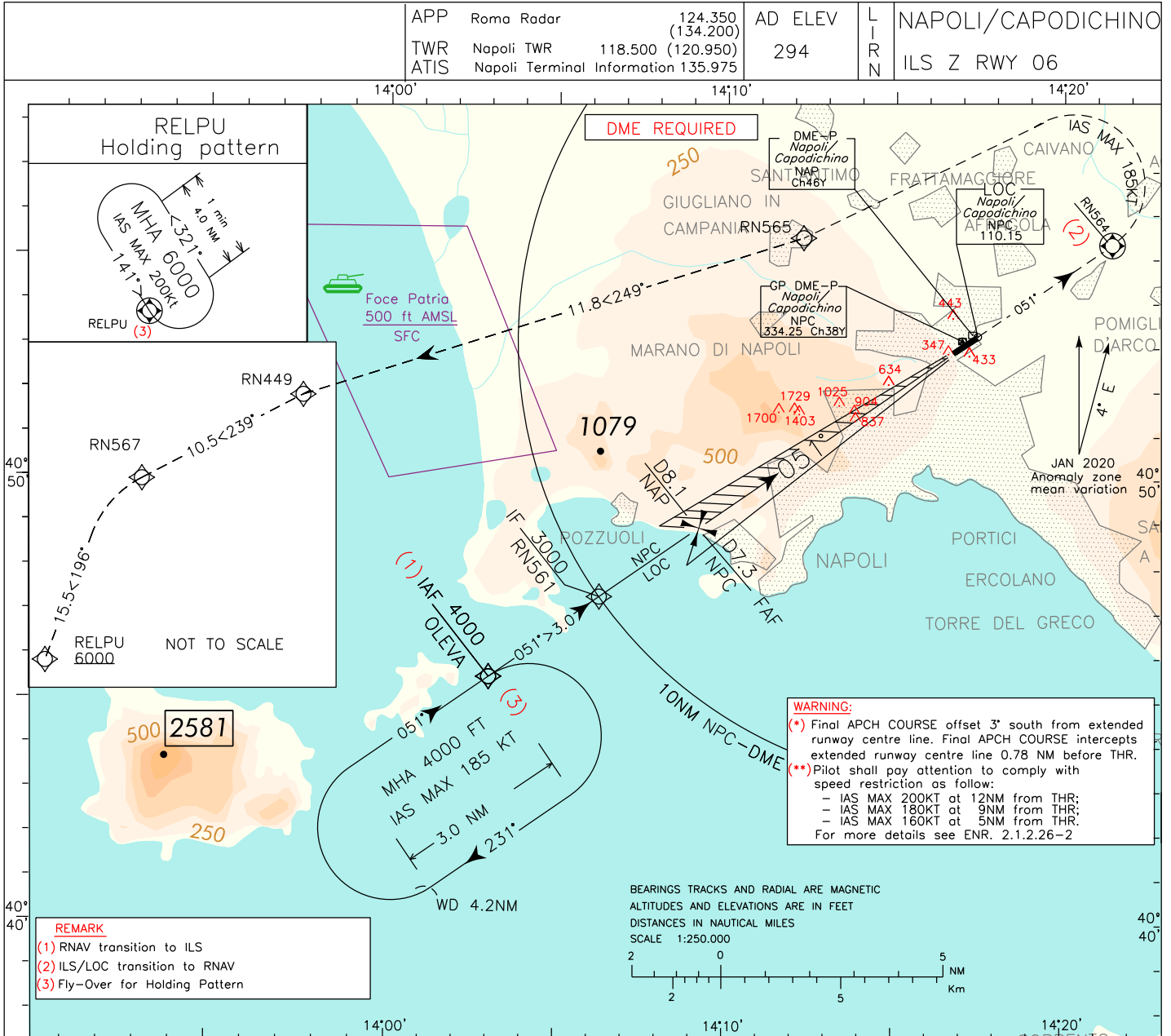
Required Additional Data

ICAO Code	LI
LTP/FTP Orthometric Height (metres)	68.0

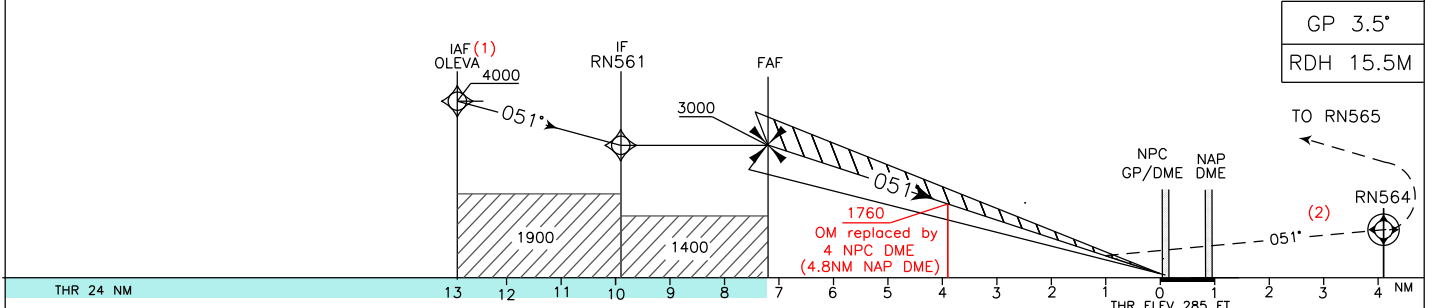
ICAO – INSTRUMENT APPROACH CHART

AD 2 LIRN 5-17

DOC 8168 – ED.7 – 2020
CHANGE: RELPU HOLDING BOX REMARK UPDATED



TRANSITION ALT 8000 MISSED APPROACH: Continue on course 051° climbing to 6000 ft. At RN564 turn left (IAS MAX 185kt) direct to RN565 Then proceed via RN449–RN567–RELPU to join missed approach holding pattern.



THR 24 NM	13	12	11	10	9	8	7	6	5	4	3	2	1	0	1	2	3	4	NM
NPC DME							7.3			4	3.3								NPC DME
NAP DME							8.1			4.8	4.1								NAP DME
OCA (OCH)	A	B	C	D						GS	FT PER MIN	FAF-D4 3.3 NM	D4-THR 3.8 NM	DIST NPC	ALT	MNM SECT ALT 25 NM ARP			
STRAIGHT IN APPROACH	ILS MACG 3.3% (200FT/NM)		680 (395)				80	500	2:28	2:53	D6	2500 (2215)				8400			
	ILS MACG 2.5% (152FT/NM)		950 (665)				100	620	1:58	2:18	D5	2130 (1845)							
							120	745	1:39	1:55	D4	1760 (1475)							
							140	865	1:25	1:39	D3	1390 (1105)							
CIRCLING	1500 (1206)		2160 (1866)				160	990	1:14	1:26	D2	1020 (735)							

TABULAR DESCRIPTION

ILS-Z RWY06 – Instrument Approach procedure

RNAV to ILS APPROACH TRANSITION FROM OLEVA											
Serial Number	Path Terminator	Waypoint Identifier	Fly Over	Course °M(°T)	Magnetic Variation	Distance (NM)	Turn Direction	Altitude (ft)	Speed Limit (kt)	VPA/TCH	Navigation Specification
010	IF	OLEVA	-	-	-	-	-	+4000	-	-	RNAV1/RNP1 (1)
020	TF	RN561	-	051° (055.0°)	-	3.0	-	+3000	-	-	RNAV1/RNP1 (1)
ILS to RNAV MISSED APPROACH TRANSITION											
010	CF	RN564	Y	051° (055.0°)	3.6	4.2	-	-	-185	-	RNAV1/RNP1 (1)
020	DF	RN565	-	-	-	-	L	-	-185	-	RNAV1/RNP1 (1)
030	TF	RN449	-	249° (252.2°)	-	11.8	-	-	-	-	RNAV1/RNP1 (1)
040	TF	RN567	-	239° (242.1°)	-	10.5	-	-	-	-	RNAV1/RNP1 (1)
050	TF	RELPU	-	196° (199.8°)	-	15.5	-	+6000	-200	-	RNAV1/RNP1 (1)
060	HM	RELPU	-	141° (144.7°)	-	4.0	-	+6000	-200		

Path Terminator	Waypoint Identifier	Inbound Course °M (°T)	Leg Distance (NM)	Waypoint Distance (NM)/Timing (min)	Turn Direction	Minimum Altitude (FT)	Maximum Altitude (FL)	Speed Limit (kt)	Magnetic Variation (°)	Navigation Specification
HM	OLEVA	051° (055.0°)	3.0	4.2/-	R	4000	-	-185	3.6	RNAV
HM	RELPU	141° (144.7°)	4.0	- / 1	L	6000	-	-200	3.6	RNAV

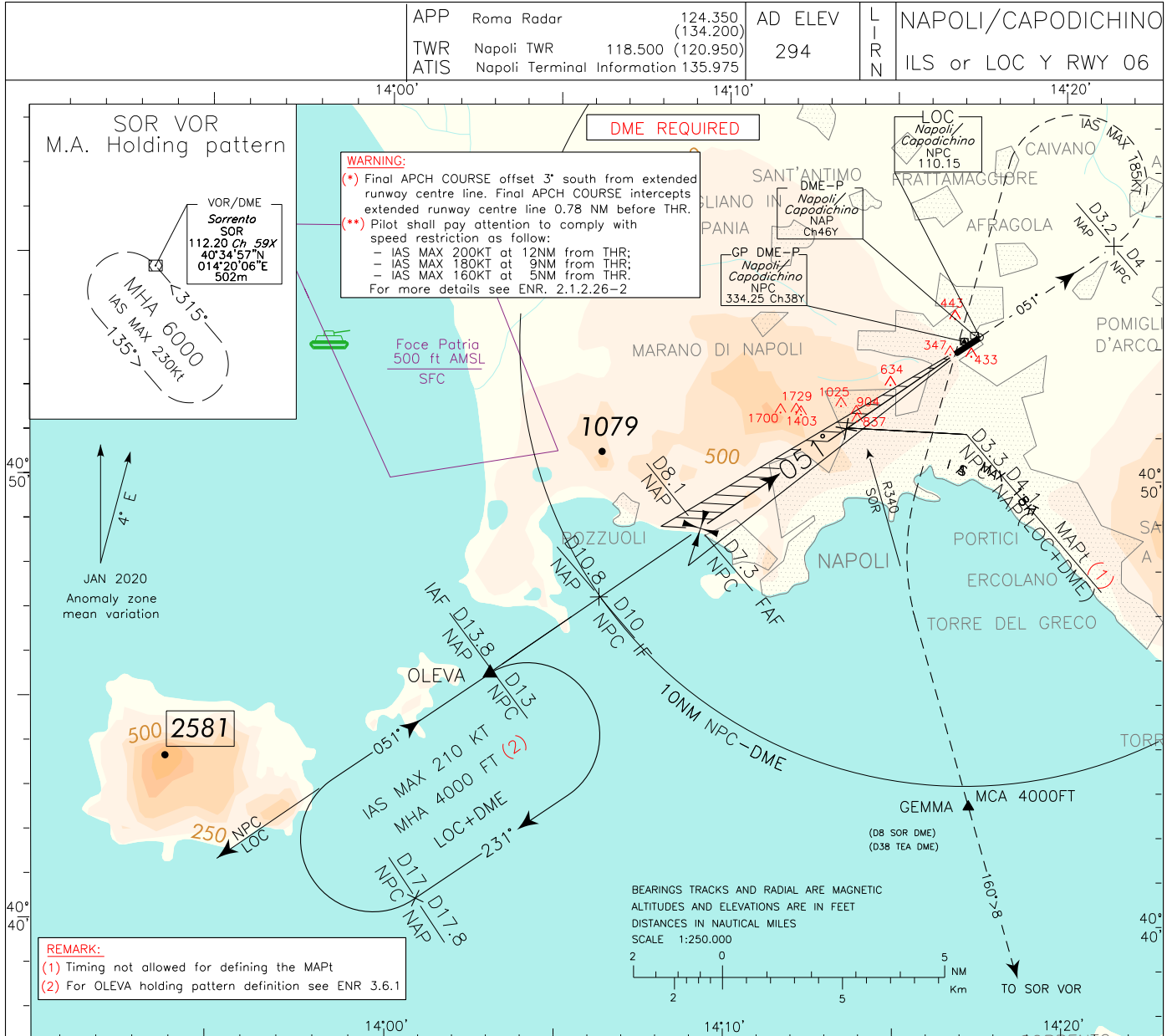
(1) For "monitoring and alerting" reasons, RNP1 specification is required in case of radar service unavailability or degradation

WAYPOINT LIST

Waypoint Identifier	Coordinates
RN561	40°47'18.06" N 014°06'14.47" E
RN564	40°55'18.99" N 014°21'22.30" E
RN565	40°55'30.77" N 014°12'15.25" E
RN449	40°51'53.35" N 013°57'26.17" E
RN567	40°46'56.49" N 013°45'09.90" E

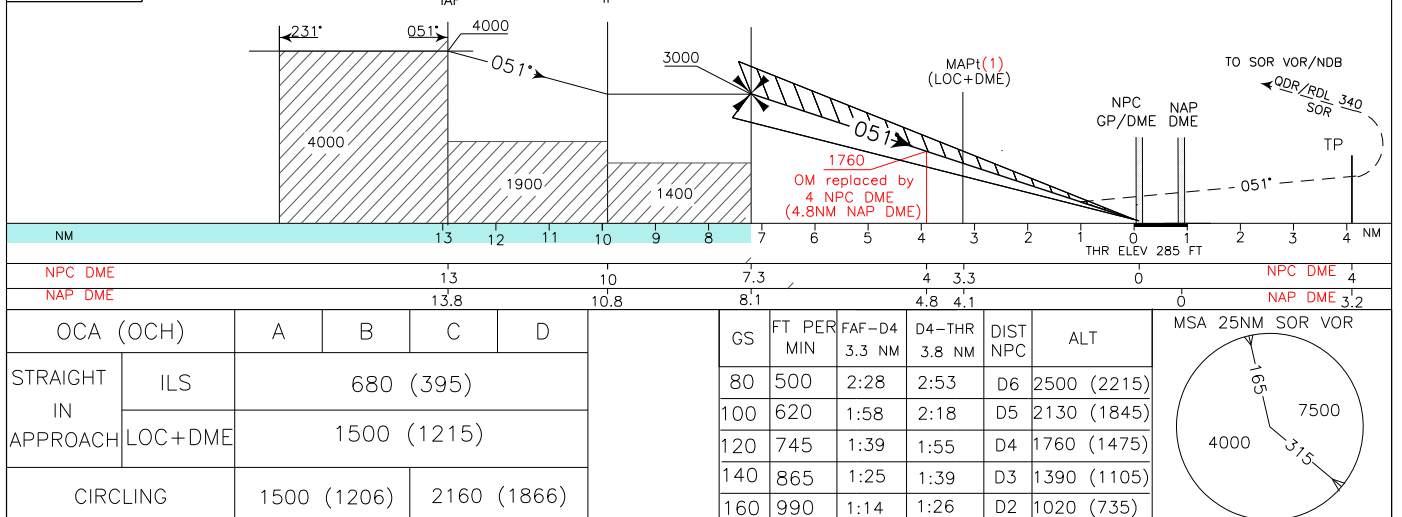
FIX/POINT	Coordinates (WGS84)
FAF	40°48'49.68" N 014°09'06.77" E

CHANGE: NEW CHART IDENTIFICATION. RENUMBERED PAGE, BOX FREQ UPDATED



TRANSITION ALT 8000 MISSED APPROACH: Continue on TR 051° climbing to 6000 ft. At 4 NM NPC DME (3.2 NM NAP DME), turn left (IAS MAX 185kt) to join RDL 340 SOR VOR bound to GEMMA (MCA4000 ft), then SOR VOR holding pattern.

GP 3.5°
RDH 15.5M

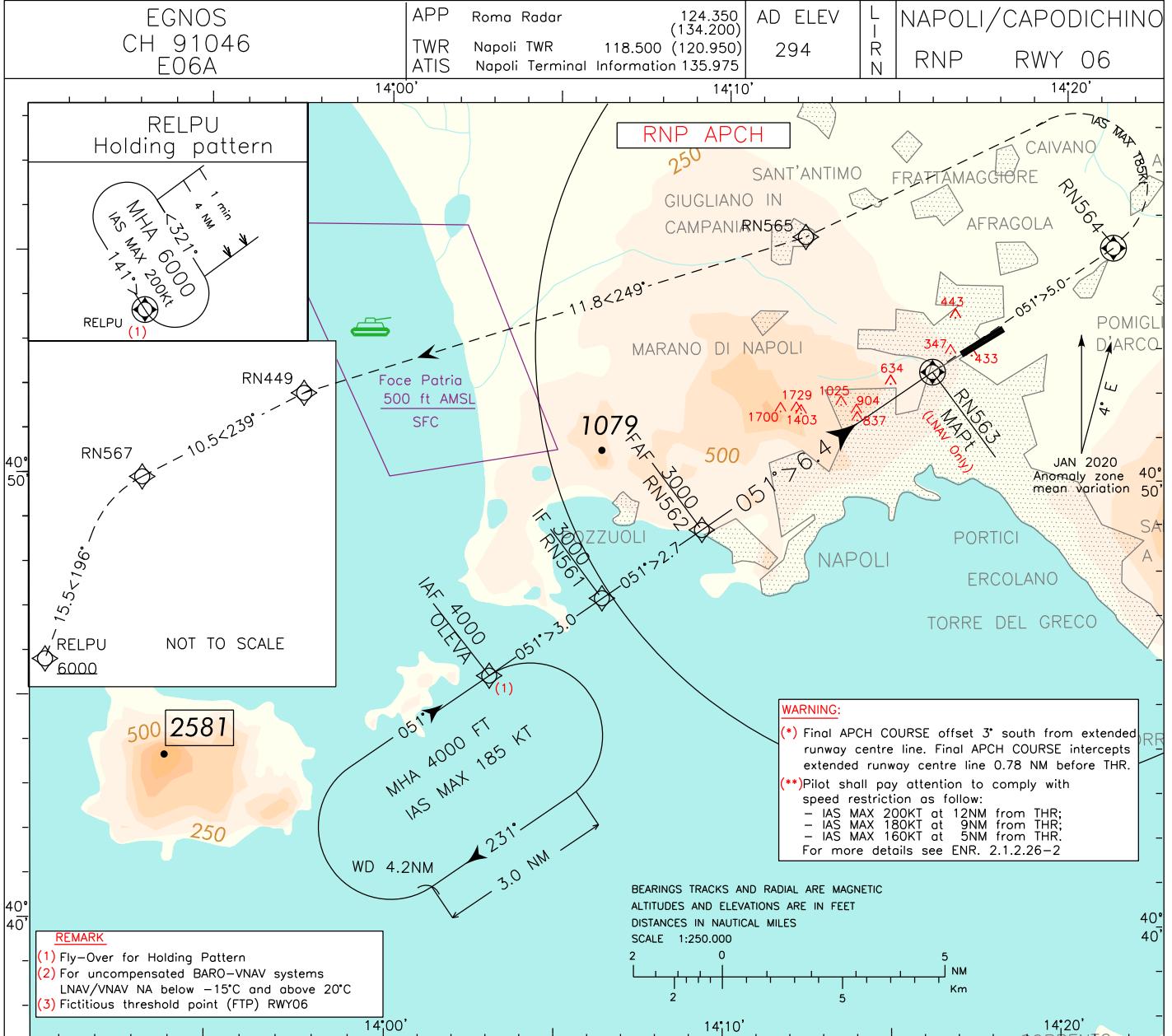


FIX/POINT	Coordinates (WGS84)
IAF	40°45'35"N 014°03'00"E
IF	40°47'18.06" N 014°06'14.47" E
FAF	40°48'49.68" N 014°09'06.77" E
MAPt (LOC+DME)	40°51'08.4"N 014°13'29.0"E

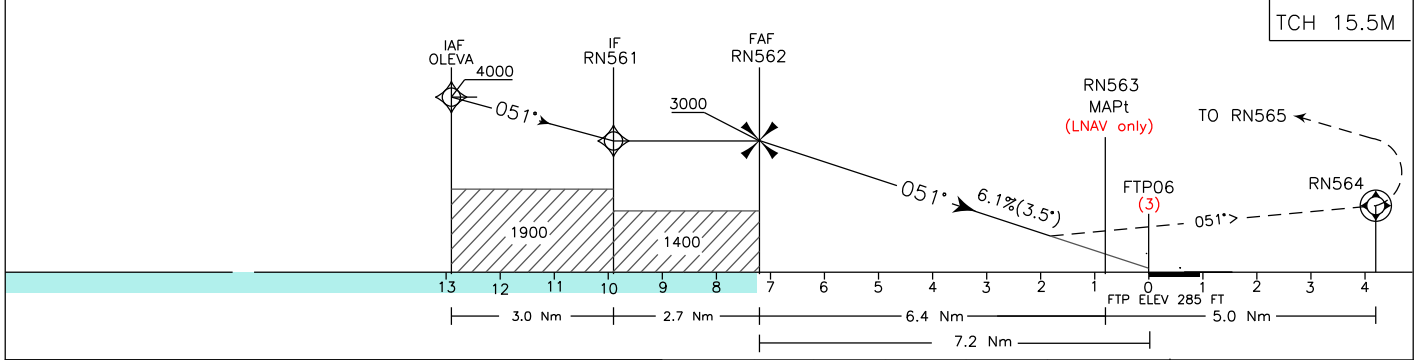
ICAO – INSTRUMENT APPROACH CHART

AD 2 LIRN 5-21

CHANGE: OLEVA AND RELPU HOLDING LENGTH UPDATED



TRANSITION ALT 8000 MISSED APPROACH: Continue on course 051° climbing to 6000 ft. At RN564 turn left (IAS MAX 185kt) direct to RN565 Then proceed via RN449-RN567-RELPU to join missed approach holding pattern.



OCA (OCH)		A	B	C	D	GS	FT PER MIN	NM to FTP06	NM to RN563	ALT (HGT)	MNM SECT ALT
STRAIGHT IN APPROACH	LPV	975(690)	988(703)	999(714)	1011(726)	80	500	7	6.2	2930 (2645)	25 NM ARP 8400
	LNAV/VNAV (2)	1164(879)	1177(892)	1188(903)	1200(915)	100	620	6	5.2	2560 (2275)	
	LNAV	1440(1155)				120	745	5	4.2	2190 (1905)	
						140	865	4	3.2	1820 (1535)	
CIRCLING		1440 (1146)		2160 (1866)		160	990	3	2.2	1450 (1165)	
						180	1115	2	1.2	1080 (795)	

TABULAR DESCRIPTION

RNP RWY06 – Instrument Approach procedure

Serial Number	Path Terminator	Waypoint Identifier	Fly Over	Course °M(°T)	Magnetic Variation	Distance (NM)	Turn Direction	Altitude (ft)	Speed Limit (kt)	VPA/TCH	Navigation Specification
010	IF	OLEVA	-	-	-	-	-	+4000	-	-	RNP APCH
020	TF	RN561	-	051° (055.0°)	-	3.0	-	+3000	-	-	RNP APCH
030	TF	RN562	-	051° (055.0°)	-	2.7	-	+3000	-	-	RNP APCH
040	TF	RN563	Y	051° (055.0°)	-	6.4	-	+1440 (1)	-	-	RNP APCH
	-	FTP06 (2)	-	051° (055.0°)	-	0.8	-	@335 (3)	-	-3.5/15.5	RNP APCH
050	CF	RN564	Y	051° (055.0°)	3.6	4.2	-	-	-185	-	RNP APCH
060	DF	RN565	-	-	-	-	L	-	-185	-	RNP APCH
070	TF	RN449	-	249° (252.2°)	-	11.8	-	-	-	-	RNP APCH
080	TF	RN567	-	239° (242.1°)	-	10.5	-	-	-	-	RNP APCH
090	TF	RELPU	-	196° (199.8°)	-	15.5	-	+6000	-200	-	RNP APCH
100	HM	RELPU	-	141° (144.7°)	-	-	-	+6000	-200	-	RNAV

Path Terminator	Waypoint Identifier	Inbound Course °M (°T)	Leg Distance (NM)	Waypoint Distance (NM) / Timing (min)	Turn Direction	Minimum Altitude (FT)	Maximum Altitude (FL)	Speed Limit (kt)	Magnetic Variation (°)	Navigation Specification
HM	OLEVA	051° (055.0°)	3.0	4.2 / -	R	4000	-	-185	3.6	RNAV
HM	RELPU	141° (144.7°)	4.0	- / 1	L	6000	-	-200	3.6	RNAV

(1) For LNAV only

(2) Fictitious threshold point (FTP) RWY06

(3) FTP Altitude plus TCH

WAYPOINT LIST

Waypoint Identifier	Coordinates
FTP06 (2)	40°52'56.10" N 014°16'51.84" E
RN561	40°47'18.06" N 014°06'14.47" E
RN562	40°48'49.68" N 014°09'06.77" E
RN563	40°52'29.38" N 014°16'01.33" E
RN564	40°55'18.99" N 014°21'22.30" E
RN565	40°55'30.77" N 014°12'15.25" E
RN449	40°51'53.35" N 013°57'26.17" E
RN567	40°46'56.49" N 013°45'09.90" E

SBAS FAS DATA BLOCK LIRN RNP RWY06

INPUT DATA	
PARAMETERS	VALUES
Operation Type	0
SBAS Provider	1 (EGNOS)
Airport Identifier	LIRN
Runway	06
Runway Letter	0 (None)
Approach Performance Designator	0
Route Indicator	
Reference Path Data Selector	0
Reference Path Identifier	E06A
LTP/FTP Latitude	405256.1000N
LTP/FTP Longitude	0141651.8335E
LTP/FTP Ellipsoidal Height (metres)	133.8
FPAP Latitude	405337.4120N
Delta FPAP Latitude (seconds)	41.3120
FPAP Longitude	0141809.9720E
Delta FPAP Longitude (seconds)	78.1385
Threshold Crossing Height	15.5
TCH Units Selector	1 (meters)
Glidepath Angle (degrees)	3.50
Course Width (metres)	105.00
Length Offset (metres)	0
HAL (metres)	40.0
VAL (metres)	35.0

OUTPUT DATA	
Data Block	10 0E 12 09 0C 06 00 00 01 36 30 05 48 75 8B 11 F3 F6 20 06 3A 19 C0 42 01 75 62 02 36 81 5E 01 64 00 C8 AF 71 30 EB 3C
Calculated CRC Value	7130EB3C

Required Additional Data (not CRC wrapped)

Parameters	Values
ICAO Code	LI
LTP/FTP Orthometric Height (metres)	86.7

Intenzionalmente bianca

Intentionally left blank