

STAR RWY24 RNAV1 or RNP1

NAPOLI/CAPODICHINO

TRANSITION ALT 8000

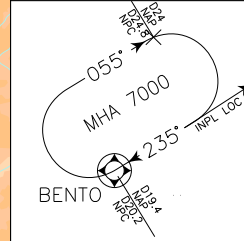
FREQUENCIES

| | | |
|------|-----------------------------|----------------------|
| APP | Roma Radar | 124.350 (134.200) |
| TWR | Napoli TWR | 118.500 (120.950) |
| ATIS | Napoli Terminal Information | 135.975 |

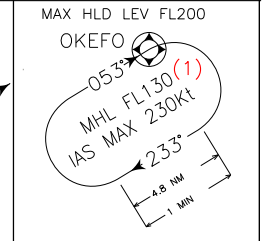
REMARKS

- (1) 7000Ft ATC Discretion
- (2) 8000Ft ATC Discretion
- (3) Or TRL if higher
- (4) 7500 in case RNAV Holding over BENTO is expected
- (5) 6000Ft ATC Discretion
- (6) ATC Discretion

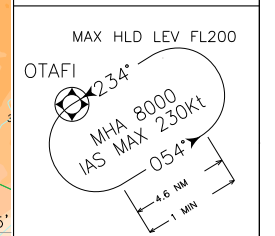
BENTO Holding Procedure (LOC/DME) for ILS Approach



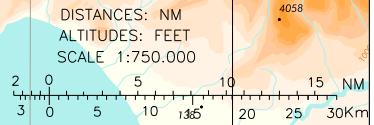
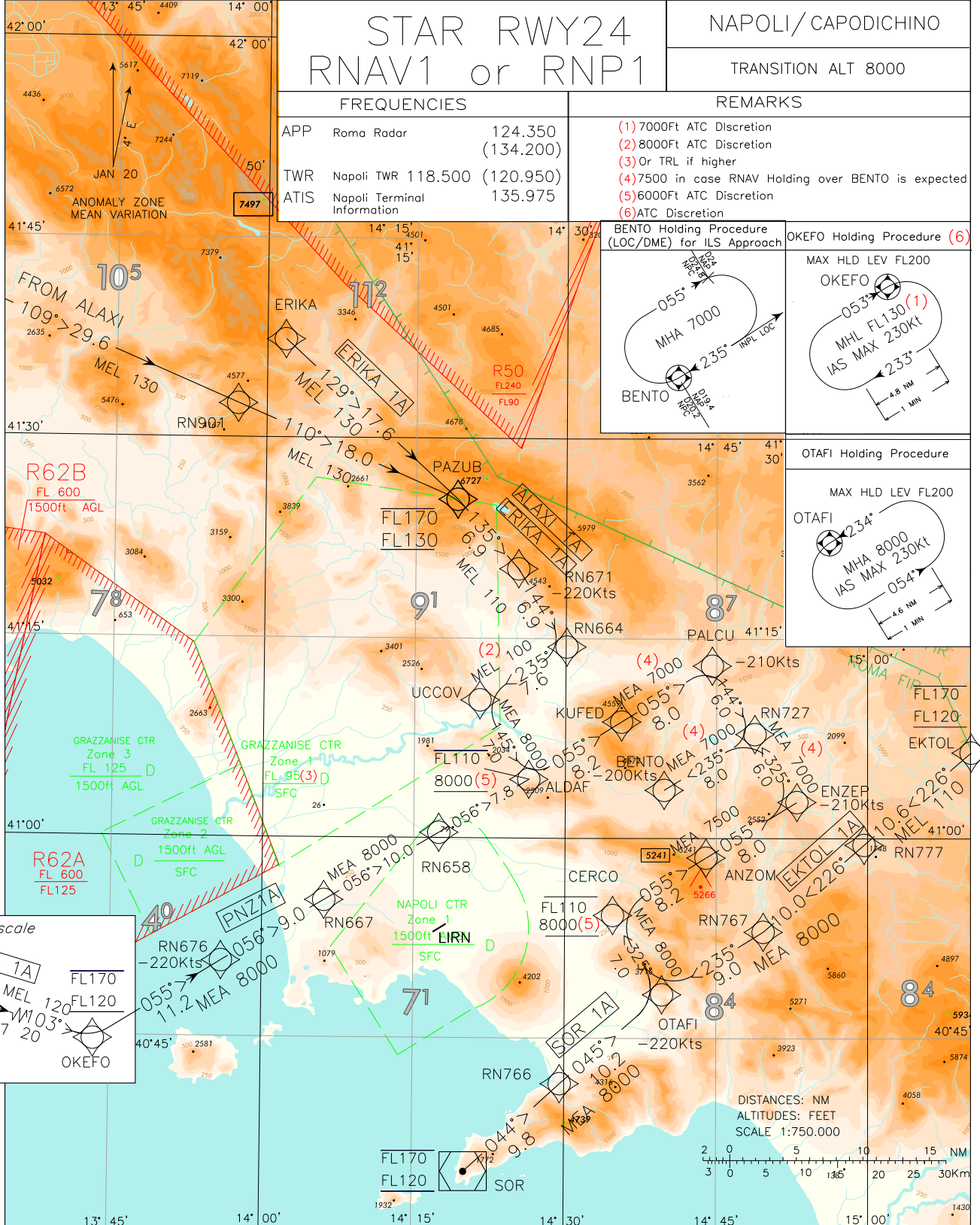
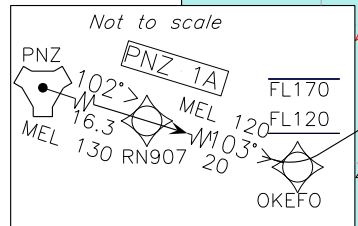
OKEFO Holding Procedure (6)



OTAFI Holding Procedure



CHANGE: SOR HOLDING BOX: SYMBOL UPDATED



| | | | | |
|---|---|---|---|--|
| <p>BENTO Holding Procedure for RNP Approach</p> <p>MAX HLD LEV FL110 WD 5.6NM</p> | <p>SOR Holding Procedure</p> <p>MAX HLD LEV FL200</p> | <p>ALDAF Holding Procedure</p> <p>MAX HLD LEV FL200</p> | <p>PAZUB Holding Procedure</p> <p>MAX HLD LEV FL200</p> | <p>MNM SECT ALT</p> <p>25 NM ARP</p> <p>8400</p> |
|---|---|---|---|--|

STAR RWY24 Napoli / Capodichino – RNAV1 or RNP1**ALAXI 1A**

| Path Terminator | Waypoint Identifier | Fly Over | Course °M(°T) | Magnetic Variation | Distance (NM) | Turn Direction | Altitude (ft) | Speed Limit (kt) | Navigation Specification |
|-----------------|---------------------|----------|-----------------|--------------------|---------------|----------------|---------------------|------------------|--------------------------|
| IF | ALAXI | - | - | - | - | - | - | - | RNAV1/RNP1 (1) |
| TF | RN901 | - | 109° (112.8) | - | 29.6 | - | +FL130 | - | RNAV1/RNP1 (1) |
| TF | PAZUB | - | 110° (113.2) | - | 18.0 | - | -FL170 +FL130 | - | RNAV1/RNP1 (1) |
| TF | RN671 | - | 135° (138.6) | - | 6.9 | - | +FL110 | -220 | RNAV1/RNP1 (1) |
| TF | RN664 | - | 144° (148) | - | 6.9 | - | +FL110 | - | RNAV1/RNP1 (1) |
| TF | UCCOV | - | 235° (238.4) | - | 7.6 | R | +FL100 (4) | - | RNAV1/RNP1 (1) |
| TF | ALDAF | - | 145° (148.1) | - | 7.0 | L | -FL110 +8000 (2) | - | RNAV1/RNP1 (1) |
| TF | KUFED | - | 055° (058.2) | - | 8.2 | L | +7000 (3) | - | RNAV1/RNP1 (1) |
| TF | PALCU | - | 055° (058.3) | - | 8.0 | - | +7000 (3) | -210 | RNAV1/RNP1 (1) |
| TF | RN727 | - | 144° (148.0) | - | 6.0 | R | +7000 (3) | - | RNAV1/RNP1 (1) |
| TF | BENTO | - | 235° (238.3) | - | 8.0 | R | +7000 (3) | -200 | RNAV1/RNP1 (1) |

ERIKA 1A

| Path Terminator | Waypoint Identifier | Fly Over | Course °M(°T) | Magnetic Variation | Distance (NM) | Turn Direction | Altitude (ft) | Speed Limit (kt) | Navigation Specification |
|-----------------|---------------------|----------|-----------------|--------------------|---------------|----------------|---------------------|------------------|--------------------------|
| IF | ERIKA | - | - | - | - | - | - | - | RNAV1/RNP1 (1) |
| TF | PAZUB | - | 129° (132.5) | - | 17.6 | - | -FL170 +FL130 | - | RNAV1/RNP1 (1) |
| TF | RN671 | - | 135° (138.6) | - | 6.9 | - | +FL110 | -220 | RNAV1/RNP1 (1) |
| TF | RN664 | - | 144° (148.0) | - | 6.9 | - | +FL110 | - | RNAV1/RNP1 (1) |
| TF | UCCOV | - | 235° (238.4) | - | 7.6 | R | +FL100 (4) | - | RNAV1/RNP1 (1) |
| TF | ALDAF | - | 145° (148.1) | - | 7.0 | L | -FL110 +8000 (2) | - | RNAV1/RNP1 (1) |
| TF | KUFED | - | 055° (058.2) | - | 8.2 | L | +7000 (3) | - | RNAV1/RNP1 (1) |
| TF | PALCU | - | 055° (058.3) | - | 8.0 | - | +7000 (3) | -210 | RNAV1/RNP1 (1) |
| TF | RN727 | - | 144° (148.0) | - | 6.0 | R | +7000 (3) | - | RNAV1/RNP1 (1) |
| TF | BENTO | - | 235° (238.3) | - | 8.0 | R | +7000 (3) | -200 | RNAV1/RNP1 (1) |

PNZ 1A

| Path Terminator | Waypoint Identifier | Fly Over | Course °M(°T) | Magnetic Variation | Distance (NM) | Turn Direction | Altitude (ft) | Speed Limit (kt) | Navigation Specification |
|-----------------|---------------------|----------|-----------------|--------------------|---------------|----------------|---------------------|------------------|--------------------------|
| IF | PNZ | - | - | - | - | - | - | - | RNAV1/RNP1 (1) |
| TF | RN907 | - | 102° (105.7) | - | 16.3 | - | +FL130 | - | RNAV1/RNP1 (1) |
| TF | OKEFO | - | 103° (105.9) | - | 20.0 | - | -FL170 +FL120 | - | RNAV1/RNP1 (1) |
| TF | RN676 | - | 055° (058.0) | - | 11.2 | - | +8000 | -220 | RNAV1/RNP1 (1) |
| TF | RN667 | - | 056° (059.0) | - | 9.0 | - | +8000 | - | RNAV1/RNP1 (1) |
| TF | RN658 | - | 056° (059.2) | - | 10.0 | - | +8000 | - | RNAV1/RNP1 (1) |
| TF | ALDAF | - | 056° (059.1) | - | 7.8 | - | -FL110 +8000 (2) | - | RNAV1/RNP1 (1) |
| TF | KUFED | - | 055° (058.2) | - | 8.2 | - | +7000 (3) | - | RNAV1/RNP1 (1) |
| TF | PALCU | - | 055° (058.3) | - | 8.0 | - | +7000 (3) | -210 | RNAV1/RNP1 (1) |
| TF | RN727 | - | 144° (148.1) | - | 6.0 | R | +7000 (3) | - | RNAV1/RNP1 (1) |
| TF | BENTO | - | 235° (238.3) | - | 8.0 | R | +7000 (3) | -200 | RNAV1/RNP1 (1) |

SOR 1A

| Path Terminator | Waypoint Identifier | Fly Over | Course °M(°T) | Magnetic Variation | Distance (NM) | Turn Direction | Altitude (ft) | Speed Limit (kt) | Navigation Specification |
|-----------------|---------------------|----------|-----------------|--------------------|---------------|----------------|---------------------|------------------|--------------------------|
| IF | SOR | - | - | - | - | - | -FL170 +FL120 | - | RNAV1/RNP1 (1) |
| TF | RN766 | - | 044° (047.3) | - | 9.8 | - | +8000 | - | RNAV1/RNP1 (1) |
| TF | OTAFI | - | 045° (048.7) | - | 10.2 | - | +8000 | -220 | RNAV1/RNP1 (1) |
| TF | CERCO | - | 325° (328.1) | - | 7.0 | L | -FL110 +8000 (5) | - | RNAV1/RNP1 (1) |
| TF | ANZOM | - | 055° (058.2) | - | 8.2 | R | +7500 | - | RNAV1/RNP1 (1) |
| TF | ENZEP | - | 055° (058.4) | - | 8.0 | - | +7500 | -210 | RNAV1/RNP1 (1) |
| TF | RN727 | - | 325° (328.3) | - | 6.0 | L | +7000 (3) | - | RNAV1/RNP1 (1) |
| TF | BENTO | - | 235° (238.3) | - | 8.0 | L | +7000 (3) | -200 | RNAV1/RNP1 (1) |

EKTOL 1A

| Path Terminator | Waypoint Identifier | Fly Over | Course °M(°T) | Magnetic Variation | Distance (NM) | Turn Direction | Altitude (ft) | Speed Limit (kt) | Navigation Specification |
|-----------------|---------------------|----------|-----------------|--------------------|---------------|----------------|---------------------|------------------|--------------------------|
| IF | EKTOL | - | - | - | - | - | -FL170 +FL120 | - | RNAV1/RNP1 (1) |
| TF | RN777 | - | 226° (229.4) | - | 10.6 | - | +FL110 | - | RNAV1/RNP1 (1) |
| TF | RN767 | - | 226° (229.3) | - | 10.0 | - | +8000 | - | RNAV1/RNP1 (1) |
| TF | OTAFI | - | 235° (238.3) | - | 9.0 | - | +8000 | -220 | RNAV1/RNP1 (1) |
| TF | CERCO | - | 325° (328.1) | - | 7.0 | - | -FL110 +8000 (5) | - | RNAV1/RNP1 (1) |
| TF | ANZOM | - | 055° (058.2) | - | 8.2 | - | +7500 | - | RNAV1/RNP1 (1) |
| TF | ENZEP | - | 055° (058.4) | - | 8.0 | - | +7500 | -210 | RNAV1/RNP1 (1) |
| TF | RN727 | - | 325° (328.3) | - | 6.0 | - | +7000 (3) | - | RNAV1/RNP1 (1) |
| TF | BENTO | - | 235° (238.3) | - | 8.0 | - | +7000 (3) | -200 | RNAV1/RNP1 (1) |

- 1) For "monitoring and alerting" reasons, RNP1 specification is required in case of radar service unavailability or degradation
- 2) 6000Ft ATC discretion if ILS-Z via ESKOB is expected
- 3) MEA 7500 if RNAV Holding over BENTO is expected
- 4) 8000Ft ATC Discretion
- 5) 6000Ft ATC Discretion if ILS-Z via DIEZO is expected

Holding RNAV

| Path Terminator | Waypoint Identifier | Inbound Course °M (°T) | Leg Distance (NM) | Timing(min.)/ Waypoint Distance (NM) | Turn Direction | Minimum Altitude (FT) | Maximum Altitude (FL) | Speed Limit (kt) | Magnetic Variation (°) | Navigation Specification |
|-----------------|---------------------|------------------------|-------------------|--------------------------------------|----------------|-----------------------|-----------------------|------------------|------------------------|--------------------------|
| HM | BENTO | 235° (238.3°) | 4.0 | - / 5.6 | R | 7500 | FL110 | -220 | 3.6 | RNAV |
| HM | SOR | 315° (319.0°) | 4.3 | 1 / - | L | 6000 | 200 | -230 | 3.6 | RNAV |
| HM | ALDAF | 055° (059°) | 4.4 | 1 / - | L | FL100 (2) | 200 | -220 | 3.6 | RNAV |
| HM | PAZUB | 109° (113.0°) | 4.8 | 1 / - | R | FL130 | 200 | -230 | 3.6 | RNAV |
| HM | OKEFO (1) | 053° (057.0) | 4.8 | 1 / - | R | FL130 (2) | 200 | -230 | 3.6 | RNAV |
| HM | OTAFI | 234° (238°) | 4.6 | 1 / - | L | 8000 | 200 | -230 | 3.6 | RNAV |

- 1) ATC Discretion
- 2) 7000 ATC discretion

WAYPOINT LIST

| Waypoint Identifier | Coordinates |
|----------------------------|------------------------------------|
| RN907 | 40°50'15.7332"N – 013°18'07.6647"E |
| RN901 | 41°32'32.9076"N – 013°57'09.8308"E |
| RN777 | 40°59'32.4915"N – 014°59'38.8959"E |
| RN766 | 40°41'34.4807"N – 014°29'33.6425"E |
| RN767 | 40°53'00.0971"N – 014°49'39.7046"E |
| RN727 | 41°07'51.4325"N – 014°48'48.6116"E |
| RN676 | 40°50'40.2041"N – 013°55'59.3780"E |
| RN671 | 41°20'13.8345"N – 014°25'14.8126"E |
| RN667 | 40°55'17.6880"N – 014°06'10.2685"E |
| RN664 | 41°14'22.4579"N – 014°30'05.6115"E |
| RN658 | 41°00'24.9423"N – 014°17'30.6975"E |

STAR RWY24 (ATC DISCRETION) RNAV1/RNP1

NAPOLI/CAPODICHINO

TRANSITION ALT 8000

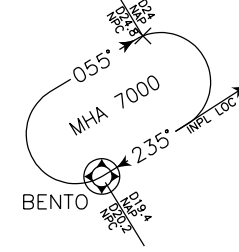
FRECUENCIES

| | | |
|------|-----------------------------|----------------------|
| APP | Roma Radar | 124.350 (134.200) |
| TWR | Napoli TWR | 118.500 (120.950) |
| ATIS | Napoli Terminal Information | 135.975 |

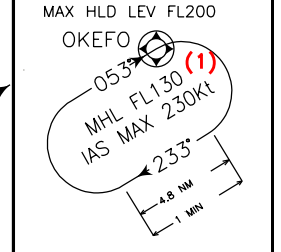
REMARKS

- (1) 7000 ATC DISCRETION
- (2) 8000 ATC Discretion
- (3) Or TRL if higher
- (4) 7500 in case RNAV Holding over BENTO is expected
- (5) ATC Discretion
- (6) For EKTOL 1B, SOR 1B
- (7) For ALAXI 1B, ERIKA 1B, PNZ 1B

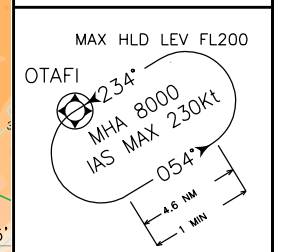
**BENTO Holding Procedure
(LOC/DME) for ILS Approach**



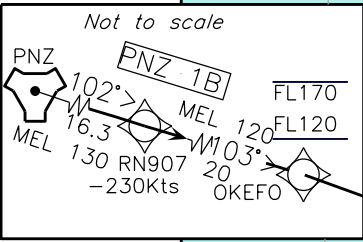
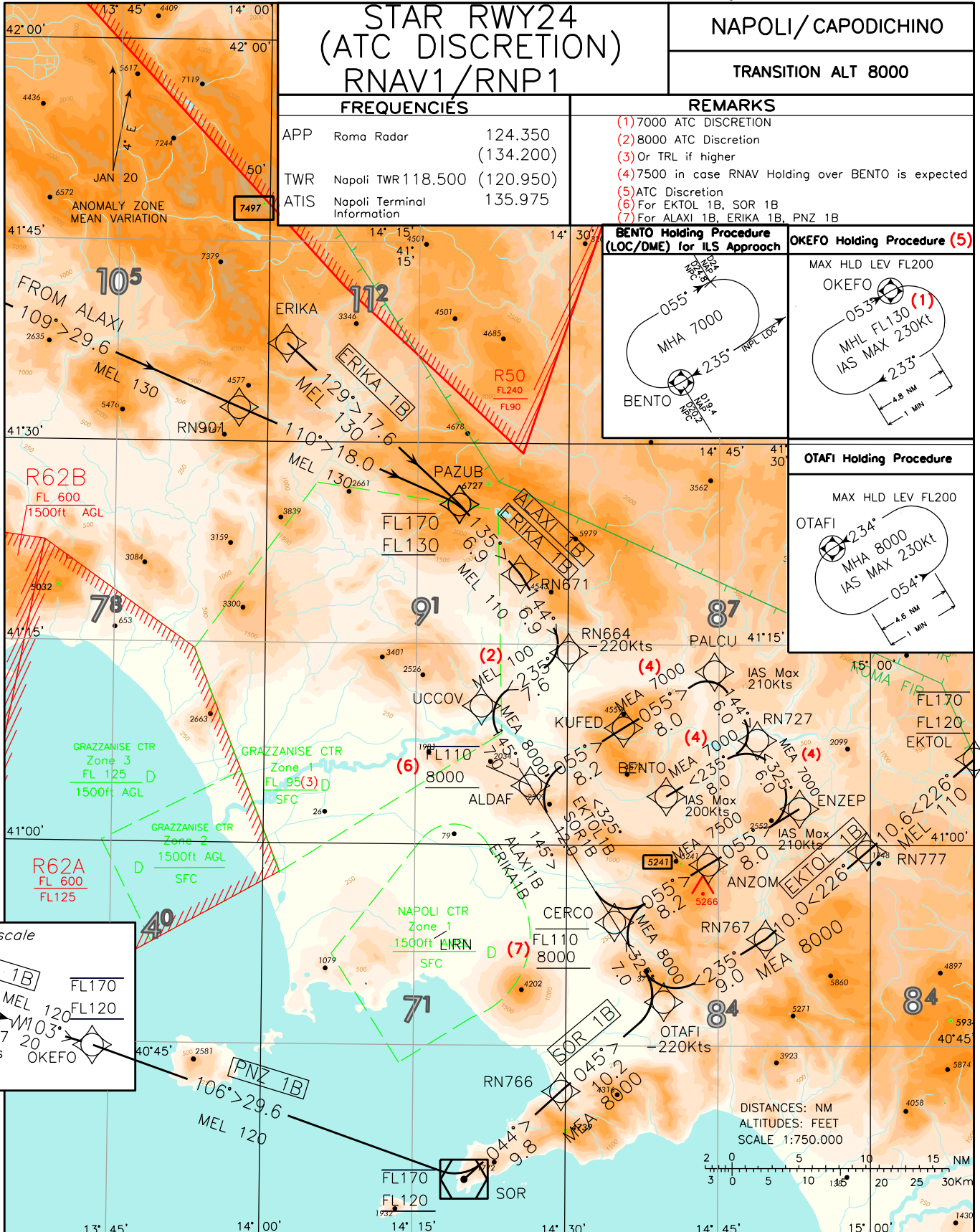
OKEFO Holding Procedure (5)



OTAFI Holding Procedure



CHANGE: REMARK 6 AND REMARK 7 UPDATED. HOLDING SOR FOR BOX: SYMBOL UPDATED



| | | | | |
|--|--|--|--|---|
| <p>BENTO Holding Procedure for RNP Approach</p> <p>MAX HLD LEV FL110 WD 5.6NM</p> | <p>SOR Holding Procedure</p> <p>MAX HLD LEV FL200</p> | <p>ALDAF Holding Procedure</p> <p>MAX HLD LEV FL200</p> | <p>PAZUB Holding Procedure</p> <p>MAX HLD LEV FL200</p> | <p>MMN SECT ALT</p> <p>25 NM ARP</p> <p>8400</p> |
|--|--|--|--|---|

STAR RWY24 ATC Discretion Napoli / Capodichino – RNAV1/RNP1**ALAXI 1B**

| Path Terminator | Waypoint Identifier | Fly Over | Course °M(°T) | Magnetic Variation | Distance (NM) | Turn Direction | Altitude (ft) | Speed Limit (kt) | Navigation Specification |
|-----------------|---------------------|----------|-----------------|--------------------|---------------|----------------|------------------|------------------|--------------------------|
| IF | ALAXI | - | - | - | - | - | - | - | RNAV1/RNP1 (1) |
| TF | RN901 | - | 109° (112.8) | - | 29.6 | - | +FL130 | - | RNAV1/RNP1 (1) |
| TF | PAZUB | - | 110° (113.2) | - | 18.0 | - | -FL170 +FL130 | - | RNAV1/RNP1 (1) |
| TF | RN671 | - | 135° (138.6) | - | 6.9 | - | +FL110 | - | RNAV1/RNP1 (1) |
| TF | RN664 | - | 144° (148.0) | - | 6.9 | - | +FL110 | -220 | RNAV1/RNP1 (1) |
| TF | UCCOV | - | 235° (238.4) | - | 7.6 | R | +FL100 | - | RNAV1/RNP1 (1) |
| TF | ALDAF | - | 145° (148.1) | - | 7.0 | L | +8000 | - | RNAV1/RNP1 (1) |
| TF | CERCO | - | 145° (148.1) | - | 12.0 | - | -FL110 +8000 | - | RNAV1/RNP1 (1) |
| TF | ANZOM | - | 055° (058.2) | - | 8.2 | L | +7500 | - | RNAV1/RNP1 (1) |
| TF | ENZEP | - | 055° (058.4) | - | 8.0 | - | +7500 | -210 | RNAV1/RNP1 (1) |
| TF | RN727 | - | 325° (328.3) | - | 6.0 | L | +7000 (3) | - | RNAV1/RNP1 (1) |
| TF | BENTO | - | 235° (238.3) | - | 8.0 | L | +7000 (3) | -200 | RNAV1/RNP1 (1) |

SOR 1B

| Path Terminator | Waypoint Identifier | Fly Over | Course °M(°T) | Magnetic Variation | Distance (NM) | Turn Direction | Altitude (ft) | Speed Limit (kt) | Navigation Specification |
|-----------------|---------------------|----------|-----------------|--------------------|---------------|----------------|---------------------------|------------------|--------------------------|
| IF | SOR | - | - | - | - | - | -FL170 +FL120 | - | RNAV1/RNP1 (1) |
| TF | RN766 | - | 044° (047.3) | - | 9.8 | - | +8000 | - | RNAV1/RNP1 (1) |
| TF | OTAFI | - | 045° (048.7) | - | 10.2 | - | +8000 | -220 | RNAV1/RNP1 (1) |
| TF | CERCO | - | 325° (328.1) | - | 7.0 | L | +8000 | - | RNAV1/RNP1 (1) |
| TF | ALDAF | - | 325° (328.1) | - | 12.0 | - | -FL110 +8000 (2)(3) | - | RNAV1/RNP1 (1) |
| TF | KUFED | - | 055° (058.2) | - | 8.2 | R | +7000 (3) | - | RNAV1/RNP1 (1) |
| TF | PALCU | - | 055° (058.3) | - | 8.0 | - | +7000 (3) | -210 | RNAV1/RNP1 (1) |
| TF | RN727 | - | 144° (148.0) | - | 6.0 | R | +7000 (3) | - | RNAV1/RNP1 (1) |
| TF | BENTO | - | 235° (238.3) | - | 8.0 | R | +7000 (3) | -200 | RNAV1/RNP1 (1) |

PNZ 1B

| Path Terminator | Waypoint Identifier | Fly Over | Course °M(°T) | Magnetic Variation | Distance (NM) | Turn Direction | Altitude (ft) | Speed Limit (kt) | Navigation Specification |
|-----------------|---------------------|----------|-----------------|--------------------|---------------|----------------|------------------|------------------|--------------------------|
| IF | PNZ | - | - | - | - | - | - | - | RNAV1/RNP1 (1) |
| TF | RN907 | - | 102° (105.7) | - | 16.3 | - | +FL130 | -230 | RNAV1/RNP1 (1) |
| TF | OKEFO | - | 103° (105.9) | - | 20.0 | - | -FL170 +FL120 | - | RNAV1/RNP1 (1) |
| TF | SOR | - | 106° (109.1) | - | 29.6 | - | -FL170 +FL120 | - | RNAV1/RNP1 (1) |
| TF | RN766 | - | 044° (047.3) | - | 9.8 | - | +8000 | - | RNAV1/RNP1 (1) |
| TF | OTAFI | - | 045° (048.7) | - | 10.2 | - | +8000 | -220 | RNAV1/RNP1 (1) |
| TF | CERCO | - | 325° (328.1) | - | 7.0 | L | -FL110 +8000 | - | RNAV1/RNP1 (1) |
| TF | ANZOM | - | 055° (058.2) | - | 8.2 | R | +7500 | - | RNAV1/RNP1 (1) |
| TF | ENZEP | - | 055° (058.4) | - | 8.0 | - | +7500 | -210 | RNAV1/RNP1 (1) |
| TF | RN727 | - | 325° (328.3) | - | 6.0 | L | +7000 (3) | - | RNAV1/RNP1 (1) |
| TF | BENTO | - | 235° (238.3) | - | 8.0 | L | +7000 (3) | -200 | RNAV1/RNP1 (1) |

ERIK 1B

| Path Terminator | Waypoint Identifier | Fly Over | Course °M(°T) | Magnetic Variation | Distance (NM) | Turn Direction | Altitude (ft) | Speed Limit (kt) | Navigation Specification |
|-----------------|---------------------|----------|-----------------|--------------------|---------------|----------------|------------------|------------------|--------------------------|
| IF | ERIK 1B | - | - | - | - | - | - | - | RNAV1/RNP1 (1) |
| TF | PAZUB | - | 129° (132.5) | - | 17.6 | - | -FL170 +FL130 | - | RNAV1/RNP1 (1) |
| TF | RN671 | - | 135° (138.6) | - | 6.9 | - | +FL110 | - | RNAV1/RNP1 (1) |
| TF | RN664 | - | 144° (148.0) | - | 6.9 | - | +FL110 | -220 | RNAV1/RNP1 (1) |
| TF | UCCOV | - | 235° (238.4) | - | 7.6 | R | +FL100 (4) | - | RNAV1/RNP1 (1) |
| TF | ALDAF | - | 145° (148.1) | - | 7.0 | L | +8000 | - | RNAV1/RNP1 (1) |
| TF | CERCO | - | 145° (148.1) | - | 12.0 | - | -FL110 +8000 | - | RNAV1/RNP1 (1) |
| TF | ANZOM | - | 055° (058.2) | - | 8.2 | L | +7500 | - | RNAV1/RNP1 (1) |
| TF | ENZEP | - | 055° (058.4) | - | 8.0 | - | +7500 | -210 | RNAV1/RNP1 (1) |
| TF | RN727 | - | 325° (328.3) | - | 6.0 | L | +7000 (3) | - | RNAV1/RNP1 (1) |
| TF | BENTO | - | 235° (238.3) | - | 8.0 | L | +7000 (3) | -200 | RNAV1/RNP1 (1) |

EKTOL 1B

| Path Terminator | Waypoint Identifier | Fly Over | Course °M(°T) | Magnetic Variation | Distance (NM) | Turn Direction | Altitude (ft) | Speed Limit (kt) | Navigation Specification |
|-----------------|---------------------|----------|-----------------|--------------------|---------------|----------------|------------------|------------------|--------------------------|
| IF | EKTOL | - | - | - | - | - | -FL170 +FL120 | - | RNAV1/RNP1 (1) |
| TF | RN777 | - | 226° (229.4) | - | 10.6 | - | +FL110 | - | RNAV1/RNP1 (1) |
| TF | RN767 | - | 226° (229.3) | - | 10.0 | - | +8000 | - | RNAV1/RNP1 (1) |
| TF | OTAFI | - | 235° (238.3) | - | 9.0 | - | +8000 | -220 | RNAV1/RNP1 (1) |
| TF | CERCO | - | 325° (328.1) | - | 7.0 | R | +8000 | - | RNAV1/RNP1 (1) |
| TF | ALDAF | - | 325° (328.1) | - | 12.0 | - | -FL110 +8000 | -220 | RNAV1/RNP1 (1) |
| TF | KUFED | - | 055° (058.2) | - | 8.2 | R | +7000 (3) | - | RNAV1/RNP1 (1) |
| TF | PALCU | - | 055° (058.3) | - | 8.0 | - | +7000 (3) | -210 | RNAV1/RNP1 (1) |
| TF | RN727 | - | 144° (148.0) | - | 6.0 | R | +7000 (3) | - | RNAV1/RNP1 (1) |
| TF | BENTO | - | 235° (238.3) | - | 8.0 | R | +7000 (3) | -200 | RNAV1/RNP1 (1) |

- 1) For "monitoring and alerting" reasons, RNP1 specification is required in case of radar service unavailability or degradation
- 2) MEA7000 ATC discretion
- 3) MEA 7500 if RNAV Holding over BENTO is expected
- 4) 8000Ft ATC Discretion

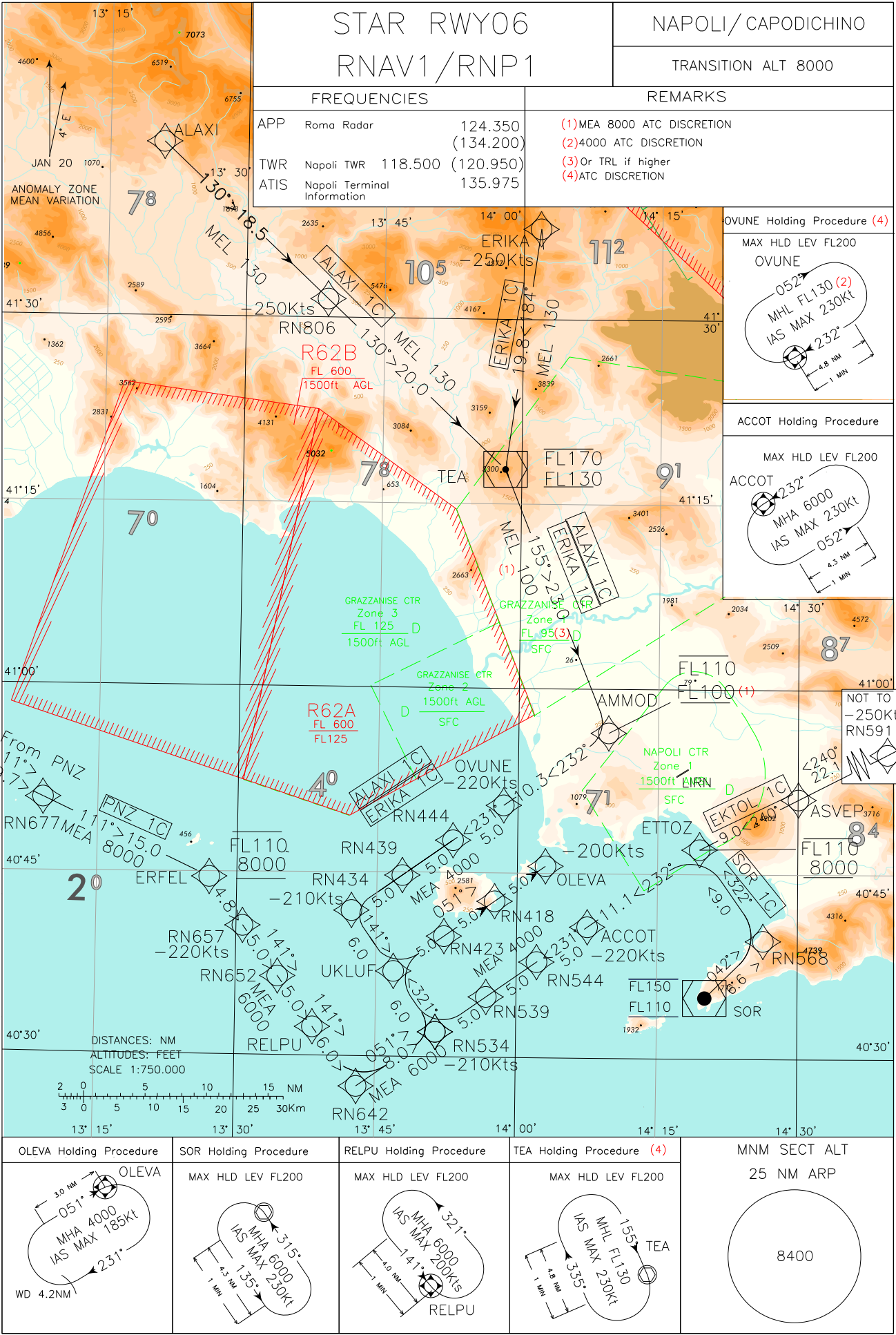
Holding RNAV

| Path Terminator | Waypoint Identifier | Inbound Course °M (°T) | Leg Distance (NM) | Timing(min./Waypoint Distance (NM)) | Turn Direction | Minimum Altitude (FT) | Maximum Altitude (FL) | Speed Limit (kt) | Magnetic Variation (°) | Navigation Specification |
|-----------------|---------------------|------------------------|-------------------|-------------------------------------|----------------|-----------------------|-----------------------|------------------|------------------------|--------------------------|
| HM | BENTO | 235° (238.3°) | 4.0 | - / 5.6 | R | 7500 | 110 | -220 | 3.6 | RNAV |
| HM | SOR | 315° (319.0°) | 4.3 | 1 / - | L | 6000 | 200 | -230 | 3.6 | RNAV |
| HM | ALDAF | 055° (059°) | 4.4 | 1 / - | L | FL100 (2) | 200 | -220 | 3.6 | RNAV |
| HM | PAZUB | 109° (113.0°) | 4.8 | 1 / - | R | FL130 | 200 | -230 | 3.6 | RNAV |
| HM | OKEFO (1) | 053° (057.0) | 4.8 | 1 / - | R | FL130 (2) | 200 | -230 | 3.6 | RNAV |
| HM | OTAFI | 234° (238°) | 4.6 | 1 / - | L | 8000 | 200 | -230 | 3.6 | RNAV |

- 1) ATC Discretion
- 2) 7000 ATC discretion

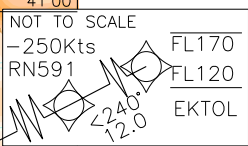
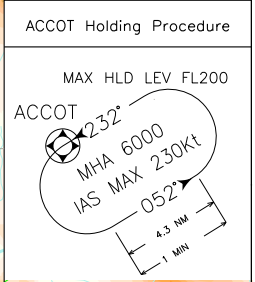
WAYPOINT LIST

| Waypoint Identifier | Coordinates |
|----------------------------|------------------------------------|
| RN907 | 40°50'15.7332"N – 013°18'07.6647"E |
| RN901 | 41°32'32.9076"N – 013°57'09.8308"E |
| RN777 | 40°59'32.4915"N – 014°59'38.8959"E |
| RN767 | 40°53'00.0971"N – 014°49'39.7046"E |
| RN766 | 40°41'34.4807"N – 014°29'33.6425"E |
| RN727 | 41°07'51.4325"N – 014°48'48.6116"E |
| RN676 | 40°50'40.2041"N – 013°55'59.3780"E |
| RN671 | 41°20'13.8345"N – 014°25'14.8126"E |
| RN667 | 40°55'17.6880"N – 014°06'10.2685"E |
| RN664 | 41°14'22.4579"N – 014°30'05.6115"E |
| RN658 | 41°00'24.9423"N – 014°17'30.6975"E |

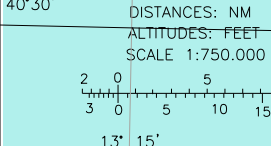


| | | | |
|------------|--|---------------------|--|
| STAR RWY06 | | NAPOLI/CAPODICHINO | |
| RNAV1/RNP1 | | TRANSITION ALT 8000 | |

| FREQUENCIES | | REMARKS |
|-------------|-------------------------------------|--|
| APP | Roma Radar 124.350 (134.200) | (1) MEA 8000 ATC DISCRETION |
| TWR | Napoli TWR 118.500 (120.950) | (2) 4000 ATC DISCRETION |
| ATIS | Napoli Terminal Information 135.975 | (3) Or TRL if higher (4) ATC DISCRETION |



CHANGE: HOLDING BOX SOR AND TEA: SYMBOL UPDATED



| | | | | |
|-------------------------|-----------------------|-------------------------|---------------------------|---------------------------|
| OLEVA Holding Procedure | SOR Holding Procedure | RELPU Holding Procedure | TEA Holding Procedure (4) | MNM SECT ALT 25 NM ARP |
| | | | | |

STAR RWY06 Napoli / Capodichino – RNAV1 or RNP1**ALAXI 1C**

| Path Terminator | Waypoint Identifier | Fly Over | Course °M(°T) | Magnetic Variation | Distance (NM) | Turn Direction | Altitude (ft) | Speed Limit (kt) | Navigation Specification |
|-----------------|---------------------|----------|---------------|--------------------|---------------|----------------|-------------------------|------------------|--------------------------|
| IF | ALAXI | - | - | - | - | - | - | - | RNAV1/RNP1 (1) |
| TF | RN806 | - | 130° (132.9°) | - | 18.5 | - | +FL130 | -250 | RNAV1/RNP1 (1) |
| TF | TEA | - | 130° (133.1°) | - | 20.0 | - | -FL170 +FL130 | - | RNAV1/RNP1 (1) |
| TF | AMMOD | - | 155° (158.0°) | - | 23.0 | - | -FL110 +FL100 (2) | - | RNAV1/RNP1 (1) |
| TF | OVUNE | - | 232° (235.0°) | - | 10.3 | - | +4000 | -220 | RNAV1/RNP1 (1) |
| TF | RN444 | - | 231° (234.9°) | - | 5.0 | - | +4000 | - | RNAV1/RNP1 (1) |
| TF | RN439 | - | 231° (234.9°) | - | 5.0 | - | +4000 | - | RNAV1/RNP1 (1) |
| TF | RN434 | - | 231° (234.9°) | - | 5.0 | - | +4000 | -210 | RNAV1/RNP1 (1) |
| TF | UKLUF | - | 141° (144.7°) | - | 6.0 | L | +4000 | - | RNAV1/RNP1 (1) |
| TF | RN423 | - | 051° (054.8°) | - | 5.0 | L | +4000 | - | RNAV1/RNP1 (1) |
| TF | RN418 | - | 051° (054.8°) | - | 5.0 | - | +4000 | - | RNAV1/RNP1 (1) |
| TF | OLEVA | - | 051° (054.8°) | - | 5.0 | - | +4000 | -200 | RNAV1/RNP1 (1) |

ERIKA 1C

| Path Terminator | Waypoint Identifier | Fly Over | Course °M(°T) | Magnetic Variation | Distance (NM) | Turn Direction | Altitude (ft) | Speed Limit (kt) | Navigation Specification |
|-----------------|---------------------|----------|---------------|--------------------|---------------|----------------|-------------------------|------------------|--------------------------|
| IF | ERIKA | - | - | - | - | - | - | -250 | RNAV1/RNP1 (1) |
| TF | TEA | - | 184° (188.0°) | - | 19.8 | - | -FL170 +FL130 | - | RNAV1/RNP1 (1) |
| TF | AMMOD | - | 155° (158.0°) | - | 23.0 | - | -FL110 +FL100 (2) | - | RNAV1/RNP1 (1) |
| TF | OVUNE | - | 232° (235.0°) | - | 10.3 | - | +4000 | -220 | RNAV1/RNP1 (1) |
| TF | RN444 | - | 231° (234.9°) | - | 5.0 | - | +4000 | - | RNAV1/RNP1 (1) |
| TF | RN439 | - | 231° (234.9°) | - | 5.0 | - | +4000 | - | RNAV1/RNP1 (1) |
| TF | RN434 | - | 231° (234.9°) | - | 5.0 | - | +4000 | -210 | RNAV1/RNP1 (1) |
| TF | UKLUF | - | 141° (144.7°) | - | 6.0 | L | +4000 | - | RNAV1/RNP1 (1) |
| TF | RN423 | - | 051° (054.8°) | - | 5.0 | L | +4000 | - | RNAV1/RNP1 (1) |
| TF | RN418 | - | 051° (054.8°) | - | 5.0 | - | +4000 | - | RNAV1/RNP1 (1) |
| TF | OLEVA | - | 051° (054.8°) | - | 5.0 | - | +4000 | -200 | RNAV1/RNP1 (1) |

EKTOL 1C

| Path Terminator | Waypoint Identifier | Fly Over | Course °M(°T) | Magnetic Variation | Distance (NM) | Turn Direction | Altitude (ft) | Speed Limit (kt) | Navigation Specification |
|-----------------|---------------------|----------|---------------|--------------------|---------------|----------------|------------------|------------------|--------------------------|
| IF | EKTOL | - | - | - | - | - | -FL170 +FL120 | - | RNAV1/RNP1 (1) |
| TF | RN591 | - | 240° (243.5°) | - | 12.1 | - | +FL110 | -250 | RNAV1/RNP1 (1) |
| TF | ASVEP | - | 240° (243.3°) | - | 22.0 | - | +8000 | - | RNAV1/RNP1 (1) |
| TF | ETTOZ | - | 240° (243.0°) | - | 9.0 | - | -FL110 +8000 | - | RNAV1/RNP1 (1) |
| TF | ACCOT | - | 232° (235.2°) | - | 11.1 | - | +4000 | -220 | RNAV1/RNP1 (1) |
| TF | RN544 | - | 231° (235.0°) | - | 5.0 | - | +4000 | - | RNAV1/RNP1 (1) |
| TF | RN539 | - | 231° (235.0°) | - | 5.0 | - | +4000 | - | RNAV1/RNP1 (1) |
| TF | RN534 | - | 231° (235.0°) | - | 5.0 | - | +4000 | -210 | RNAV1/RNP1 (1) |
| TF | UKLUF | - | 321° (324.8°) | - | 6.0 | R | +4000 | - | RNAV1/RNP1 (1) |
| TF | RN423 | - | 051° (054.8°) | - | 5.0 | R | +4000 | - | RNAV1/RNP1 (1) |
| TF | RN418 | - | 051° (054.8°) | - | 5.0 | - | +4000 | - | RNAV1/RNP1 (1) |
| TF | OLEVA | - | 051° (054.8°) | - | 5.0 | - | +4000 | -200 | RNAV1/RNP1 (1) |

SOR 1C

| Path Terminator | Waypoint Identifier | Fly Over | Course °M(°T) | Magnetic Variation | Distance (NM) | Turn Direction | Altitude (ft) | Speed Limit (kt) | Navigation Specification |
|-----------------|---------------------|----------|---------------|--------------------|---------------|----------------|------------------|------------------|--------------------------|
| IF | SOR | - | - | - | - | - | -FL150 +FL110 | - | RNAV1/RNP1 (1) |
| TF | RN568 | - | 042° (045.5°) | - | 6.6 | - | +8000 | - | RNAV1/RNP1 (1) |
| TF | ETTOZ | - | 322° (325.0°) | - | 9.1 | - | -FL110 +8000 | - | RNAV1/RNP1 (1) |
| TF | ACCOT | - | 232° (235.2°) | - | 11.1 | L | +4000 | -220 | RNAV1/RNP1 (1) |
| TF | RN544 | - | 231° (235.0°) | - | 5.0 | - | +4000 | - | RNAV1/RNP1 (1) |
| TF | RN539 | - | 231° (235.0°) | - | 5.0 | - | +4000 | - | RNAV1/RNP1 (1) |
| TF | RN534 | - | 231° (235.0°) | - | 5.0 | - | +4000 | -210 | RNAV1/RNP1 (1) |
| TF | UKLUF | - | 321° (324.8°) | - | 6.0 | R | +4000 | - | RNAV1/RNP1 (1) |
| TF | RN423 | - | 051° (054.8°) | - | 5.0 | R | +4000 | - | RNAV1/RNP1 (1) |
| TF | RN418 | - | 051° (054.8°) | - | 5.0 | - | +4000 | - | RNAV1/RNP1 (1) |
| TF | OLEVA | - | 051° (054.8°) | - | 5.0 | - | +4000 | -200 | RNAV1/RNP1 (1) |

PNZ 1C

| Path Terminator | Waypoint Identifier | Fly Over | Course °M(°T) | Magnetic Variation | Distance (NM) | Turn Direction | Altitude (ft) | Speed Limit (kt) | Navigation Specification |
|-----------------|---------------------|----------|---------------|--------------------|---------------|----------------|------------------|------------------|--------------------------|
| IF | PNZ | - | - | - | | | -FL170 +FL120 | - | RNAV1/RNP1 (1) |
| TF | RN677 | - | 111° (114.4°) | - | 9.7 | - | +8000 | - | RNAV1/RNP1 (1) |
| TF | ERFEL | - | 111° (114.6°) | - | 15.0 | - | -FL110 +8000 | - | RNAV1/RNP1 (1) |
| TF | RN657 | - | 141° (144.6°) | - | 4.8 | - | +6000 | -220 | RNAV1/RNP1 (1) |
| TF | RN652 | - | 141° (144.7°) | - | 5.0 | - | +6000 | - | RNAV1/RNP1 (1) |
| TF | RELPU | - | 141° (144.7°) | - | 5.0 | - | +6000 | - | RNAV1/RNP1 (1) |
| TF | RN642 | - | 141° (144.8°) | - | 6.0 | - | +6000 | - | |
| TF | RN534 | - | 051° (054.9°) | - | 8.0 | L | +6000 | -210 | RNAV1/RNP1 (1) |
| TF | UKLUF | - | 321° (324.8°) | - | 6.0 | L | +4000 | - | RNAV1/RNP1 (1) |
| TF | RN423 | - | 051° (054.9°) | - | 5.0 | R | +4000 | - | RNAV1/RNP1 (1) |
| TF | RN418 | - | 051° (054.8°) | - | 5.0 | - | +4000 | - | RNAV1/RNP1 (1) |
| TF | OLEVA | - | 051° (054.8°) | - | 5.0 | - | +4000 | -200 | RNAV1/RNP1 (1) |

- 1) For "monitoring and alerting" reasons, RNP1 specification is required in case of radar service unavailability or degradation
- 2) 8000Ft ATC Discretion
- 3) 4000Ft ATC Discretion
- 4) ATC Discretion

Holding RNAV

| Path Terminator | Waypoint Identifier | Inbound Course °M (°T) | Leg Distance (NM) | Timing(min./Waypoint Distance (NM)) | Turn Direction | Minimum Altitude (FT) | Maximum Altitude (FL) | Speed Limit (kt) | Magnetic Variation (°) | Navigation Specification |
|-----------------|---------------------|------------------------|-------------------|-------------------------------------|----------------|-----------------------|-----------------------|------------------|------------------------|--------------------------|
| HM | OLEVA | 051° (055.0°) | 3.0 | - / 4.2 | R | 4000 | - | -185 | 3.6 | RNAV |
| HM | SOR | 315° (319.0°) | 4.3 | 1 / - | L | 6000 | 200 | -230 | 3.6 | RNAV |
| HM | RELPU | 141° (144.7°) | 4.0 | 1 / - | L | 6000 | 200 | -200 | 3.6 | RNAV |
| HM | TEA (1) | 155° (159.0°) | 4.8 | 1 / - | R | FL130 | 200 | -230 | 3.6 | RNAV |
| HM | OVUNE (1) | 232° (235.1°) | 4.8 | 1 / - | R | FL130 (2) | 200 | -230 | 3.6 | RNAV |
| HM | ACCOT | 232° (235.1°) | 4.3 | 1 / - | L | 6000 | 200 | -230 | 3.6 | RNAV |

- 1) ATC Discretion
- 2) 4000 ATC Discretion

WAYPOINT LIST

| Waypoint Identifier | Coordinates |
|----------------------------|------------------------------------|
| RN806 | 41°31'30.0443"N – 013°38'51.6016"E |
| RN568 | 40°39'35.2810"N – 014°26'18.9858"E |
| RN444 | 40°47'36.7236"N – 013°53'05.4106"E |
| RN439 | 40°44'43.6330"N – 013°47'42.8106"E |
| RN434 | 40°41'49.5784"N – 013°42'19.0661"E |
| RN423 | 40°39'48.5323"N – 013°52'14.0079"E |
| RN418 | 40°42'41.4148"N – 013°57'36.4071"E |
| RN591 | 41°01'01.8216"N – 014°55'56.6992"E |
| RN544 | 40°37'46.9610"N – 014°02'09.2867"E |
| RN539 | 40°34'54.3020"N – 013°56'47.0719"E |
| RN534 | 40°32'01.0359"N - 013:51:24.4115"E |
| RN677 | 40°50'40.8470"N – 013°09'06.8379"E |
| RN657 | 40°40'29.7701"N – 013°30'42.4511"E |
| RN652 | 40°36'24.7295"N – 013°34'30.1075"E |
| RN642 | 40°27'25.0822"N – 013°42'49.4326"E |

STAR RWY06
ATC DISCRETION
RNAV1/RNP1

NAPOLI/CAPODICHINO

TRANSITION ALT 8000

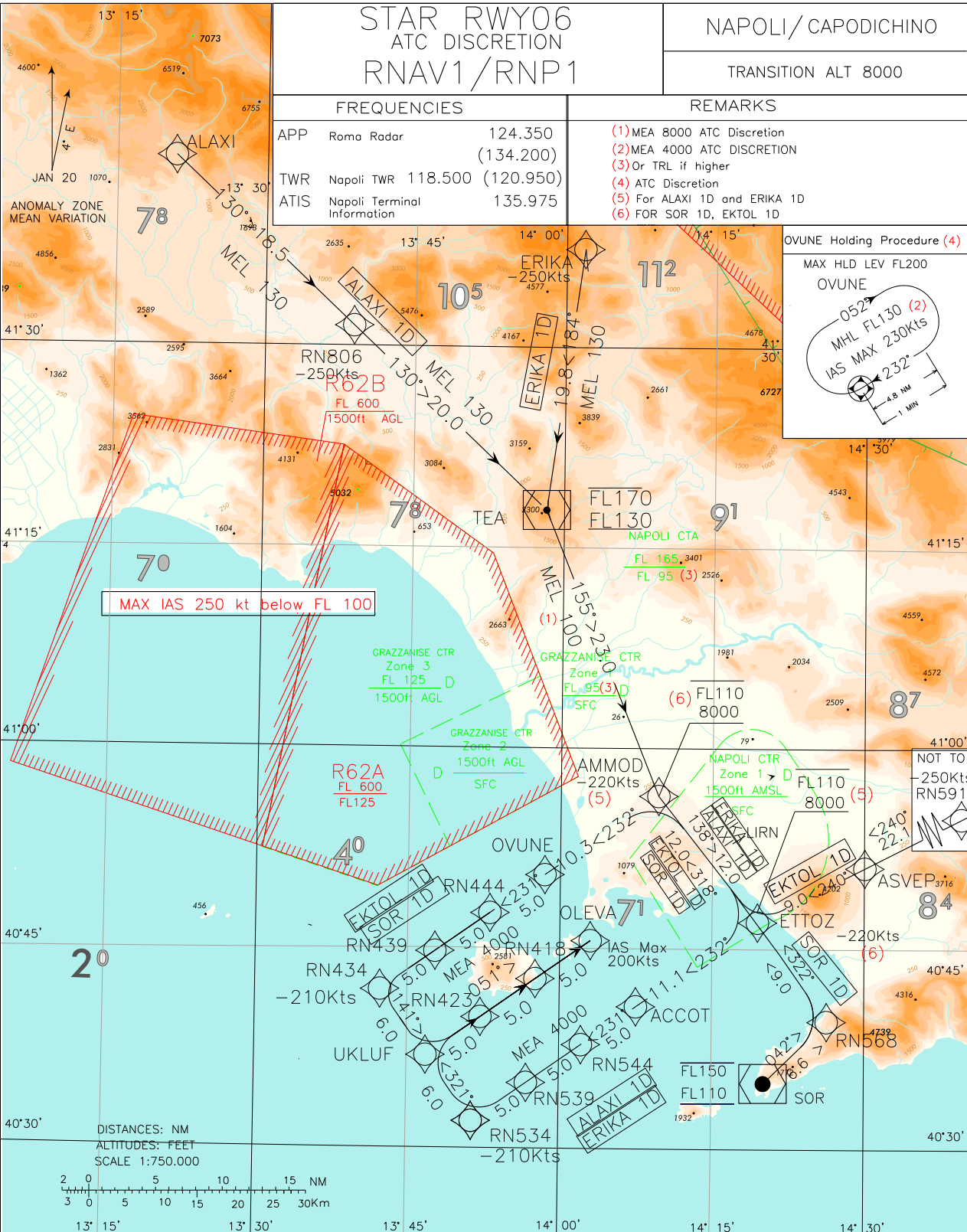
FREQUENCIES

APP Roma Radar 124.350
(134.200)
TWR Napoli TWR 118.500 (120.950)
ATIS Napoli Terminal Information 135.975

REMARKS

- (1) MEA 8000 ATC Discretion
- (2) MEA 4000 ATC DISCRETION
- (3) Or TRL if higher
- (4) ATC Discretion
- (5) For ALAXI 1D and ERIKA 1D
- (6) FOR SOR 1D, EKTOL 1D

CHANGE: ACCOT HOLDING BOX: OUTBOUND LENGTH UPDATED. SPEED RESTRICTION OVER ACCOT REMOVED. SOR AND TEA HOLDING BOX: SYMBOL UPDATED



STAR RWY06 ATC Discretion Napoli / Capodichino – RNAV1 or RNP1**ALAXI 1D**

| Path Terminator | Waypoint Identifier | Fly Over | Course °M(°T) | Magnetic Variation | Distance (NM) | Turn Direction | Altitude (ft) | Speed Limit (kt) | Navigation Specification |
|-----------------|---------------------|----------|---------------|--------------------|---------------|----------------|------------------|------------------|--------------------------|
| IF | ALAXI | - | - | - | - | - | - | - | RNAV1/RNP1 (1) |
| TF | RN806 | - | 130° (132.9°) | - | 18.5 | - | +FL130 | -250 | RNAV1/RNP1 (1) |
| TF | TEA | - | 130° (133.1°) | - | 20.0 | - | -FL170 +FL130 | - | RNAV1/RNP1 (1) |
| TF | AMMOD | - | 155° (158.0°) | - | 23.0 | - | +FL100 (2) | -220 | RNAV1/RNP1 (1) |
| TF | ETTOZ | - | 138° (141.6°) | - | 12.0 | - | -FL110 +8000 | - | RNAV1/RNP1 (1) |
| TF | ACCOT | - | 232° (235.2°) | - | 11.1 | R | +4000 | - | RNAV1/RNP1 (1) |
| TF | RN544 | - | 231° (235.0°) | - | 5.0 | - | +4000 | - | RNAV1/RNP1 (1) |
| TF | RN539 | - | 231° (235.0°) | - | 5.0 | - | +4000 | - | RNAV1/RNP1 (1) |
| TF | RN534 | - | 231° (235.0°) | - | 5.0 | - | +4000 | 210 | RNAV1/RNP1 (1) |
| TF | UKLUF | - | 321° (324.8°) | - | 6.0 | R | +4000 | - | RNAV1/RNP1 (1) |
| TF | RN423 | - | 051° (054.8°) | - | 5.0 | R | +4000 | - | RNAV1/RNP1 (1) |
| TF | RN418 | - | 051° (054.8°) | - | 5.0 | - | +4000 | - | RNAV1/RNP1 (1) |
| TF | OLEVA | - | 051° (054.8°) | - | 5.0 | - | +4000 | 200 | RNAV1/RNP1 (1) |

ERIKA 1D

| Path Terminator | Waypoint Identifier | Fly Over | Course °M(°T) | Magnetic Variation | Distance (NM) | Turn Direction | Altitude (ft) | Speed Limit (kt) | Navigation Specification |
|-----------------|---------------------|----------|---------------|--------------------|---------------|----------------|------------------|------------------|--------------------------|
| IF | ERIKA | - | - | - | - | - | - | -250 | RNAV1/RNP1 (1) |
| TF | TEA | - | 184° (188.0°) | - | 19.8 | - | -FL170 +FL130 | - | RNAV1/RNP1 (1) |
| TF | AMMOD | - | 155° (158.0°) | - | 23.0 | - | +FL100 (2) | -220 | RNAV1/RNP1 (1) |
| TF | ETTOZ | - | 138° (141.6°) | - | 12.0 | - | -FL110 +8000 | - | RNAV1/RNP1 (1) |
| TF | ACCOT | - | 232° (235.2°) | - | 11.1 | R | +4000 | - | RNAV1/RNP1 (1) |
| TF | RN544 | - | 231° (235.0°) | - | 5.0 | - | +4000 | - | RNAV1/RNP1 (1) |
| TF | RN539 | - | 231° (235.0°) | - | 5.0 | - | +4000 | - | RNAV1/RNP1 (1) |
| TF | RN534 | - | 231° (235.0°) | - | 5.0 | - | +4000 | 210 | RNAV1/RNP1 (1) |
| TF | UKLUF | - | 321° (324.8°) | - | 6.0 | R | +4000 | - | RNAV1/RNP1 (1) |
| TF | RN423 | - | 051° (054.8°) | - | 5.0 | R | +4000 | - | RNAV1/RNP1 (1) |
| TF | RN418 | - | 051° (054.8°) | - | 5.0 | - | +4000 | - | RNAV1/RNP1 (1) |
| TF | OLEVA | - | 051° (054.8°) | - | 5.0 | - | +4000 | 200 | RNAV1/RNP1 (1) |

EKTOL 1D

| Path Terminator | Waypoint Identifier | Fly Over | Course °M(°T) | Magnetic Variation | Distance (NM) | Turn Direction | Altitude (ft) | Speed Limit (kt) | Navigation Specification |
|-----------------|---------------------|----------|---------------|--------------------|---------------|----------------|------------------|------------------|--------------------------|
| IF | EKTOL | - | - | - | - | - | -FL170 +FL120 | - | RNAV1/RNP1 (1) |
| TF | RN591 | - | 240° (243.5°) | - | 12.1 | - | +FL110 | -250 | RNAV1/RNP1 (1) |
| TF | ASVEP | - | 240° (243.3°) | - | 22.0 | - | +8000 | - | RNAV1/RNP1 (1) |
| TF | ETTOZ | - | 240° (243.0°) | - | 9.0 | - | +8000 | -220 | RNAV1/RNP1 (1) |
| TF | AMMOD | - | 318° (321.7°) | - | 12.0 | - | -FL110 +8000 | - | RNAV1/RNP1 (1) |
| TF | OVUNE | - | 232° (235.0°) | - | 10.3 | L | +4000 | - | RNAV1/RNP1 (1) |
| TF | RN444 | - | 231° (234.9°) | - | 5.0 | - | +4000 | - | RNAV1/RNP1 (1) |
| TF | RN439 | - | 231° (234.9°) | - | 5.0 | - | +4000 | - | RNAV1/RNP1 (1) |
| TF | RN434 | - | 231° (234.9°) | - | 5.0 | - | +4000 | 210 | RNAV1/RNP1 (1) |
| TF | UKLUF | - | 141° (144.7°) | - | 6.0 | L | +4000 | - | RNAV1/RNP1 (1) |
| TF | RN423 | - | 051° (054.8°) | - | 5.0 | L | +4000 | - | RNAV1/RNP1 (1) |
| TF | RN418 | - | 051° (054.8°) | - | 5.0 | - | +4000 | - | RNAV1/RNP1 (1) |
| TF | OLEVA | - | 051° (054.8°) | - | 5.0 | - | +4000 | 200 | RNAV1/RNP1 (1) |

SOR 1D

| Path Terminator | Waypoint Identifier | Fly Over | Course °M(°T) | Magnetic Variation | Distance (NM) | Turn Direction | Altitude (ft) | Speed Limit (kt) | Navigation Specification |
|-----------------|---------------------|----------|---------------|--------------------|---------------|----------------|------------------|------------------|--------------------------|
| IF | SOR | - | - | - | - | - | -FL150 +FL110 | - | RNAV1/RNP1 (1) |
| TF | RN568 | - | 042° (045.5°) | - | 6.6 | - | +8000 | - | RNAV1/RNP1 (1) |
| TF | ETTOZ | - | 322° (325.0°) | - | 9.1 | - | +8000 | -220 | RNAV1/RNP1 (1) |
| TF | AMMOD | - | 318° (321.7°) | - | 12.0 | - | -FL110 +8000 | - | RNAV1/RNP1 (1) |
| TF | OVUNE | - | 232° (235.0°) | - | 10.3 | L | +4000 | - | RNAV1/RNP1 (1) |
| TF | RN444 | - | 231° (234.9°) | - | 5.0 | - | +4000 | - | RNAV1/RNP1 (1) |
| TF | RN439 | - | 231° (234.9°) | - | 5.0 | - | +4000 | - | RNAV1/RNP1 (1) |
| TF | RN434 | - | 231° (234.9°) | - | 5.0 | - | +4000 | 210 | RNAV1/RNP1 (1) |
| TF | UKLUF | - | 141° (144.7°) | - | 6.0 | L | +4000 | - | RNAV1/RNP1 (1) |
| TF | RN423 | - | 051° (054.8°) | - | 5.0 | L | +4000 | - | RNAV1/RNP1 (1) |
| TF | RN418 | - | 051° (054.8°) | - | 5.0 | - | +4000 | - | RNAV1/RNP1 (1) |
| TF | OLEVA | - | 051° (054.8°) | - | 5.0 | - | +4000 | 200 | RNAV1/RNP1 (1) |

- 1) For "monitoring and alerting" reasons, RNP1 specification is required in case of radar service unavailability or degradation
- 2) 8000Ft ATC Discretion

Holding RNAV

| Path Terminator | Waypoint Identifier | Inbound Course °M (°T) | Leg Distance (NM) | Timing(min.)/ Waypoint Distance (NM) | Turn Direction | Minimum Altitude (FT) | Maximum Altitude (FL) | Speed Limit (kt) | Magnetic Variation (°) | Navigation Specification |
|-----------------|---------------------|------------------------|-------------------|---|----------------|-----------------------|-----------------------|------------------|------------------------|--------------------------|
| HM | OLEVA | 051° (055.0°) | 3.0 | - / 4.2 | R | 4000 | - | -185 | 3.6 | RNAV |
| HM | SOR | 315° (319.0°) | 4.3 | 1 / - | L | 6000 | 200 | -230 | 3.6 | RNAV |
| HM | TEA (1) | 155° (159.0°) | 4.8 | 1 / - | R | FL130 | 200 | -230 | 3.6 | RNAV |
| HM | OVUNE (1) | 232° (235.1°) | 4.8 | 1 / - | R | FL130 (2) | 200 | -230 | 3.6 | RNAV |
| HM | ACCOT | 232° (235.1°) | 4.3 | 1 / - | L | 6000 | 200 | -230 | 3.6 | RNAV |

1) ATC Discretion

2) 4000Ft ATC Discretion

WAYPOINT LIST

| Waypoint Identifier | Coordinates |
|---------------------|-------------------------------------|
| RN806 | 41°31'30.0443"N – 013°38'51.6016"E |
| RN568 | 40°39'35.2810"N – 014°26'18.9858"E |
| RN444 | 40°47'36.7236"N – 013°53'05.4106"E |
| RN439 | 40°44'43.6330"N – 013°47'42.8106"E |
| RN434 | 40°41'49.5784"N – 013°42'19.0661"E |
| RN423 | 40°39'48.5323"N – 013°52'14.0079"E |
| RN418 | 40°42'41.4148"N – 013°57'36.4071"E |
| RN591 | 41°01'01.8216"N – 014°55'56.6992"E |
| RN544 | 40°37'46.9610"N – 014°02':09.2867"E |
| RN539 | 40°34'54.3020"N – 013°56'47.0719"E |
| RN534 | 40°32'01.0359"N - 013:51:24.4115"E |

Intenzionalmente bianca

Intentionally left blank

STAR RWY06/24 (ATC DISCRETION)

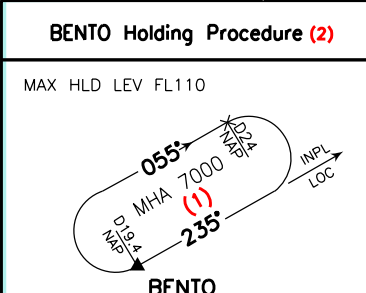
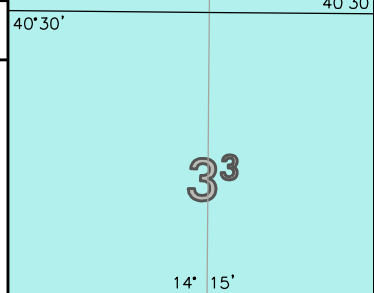
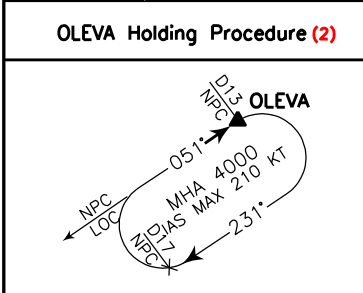
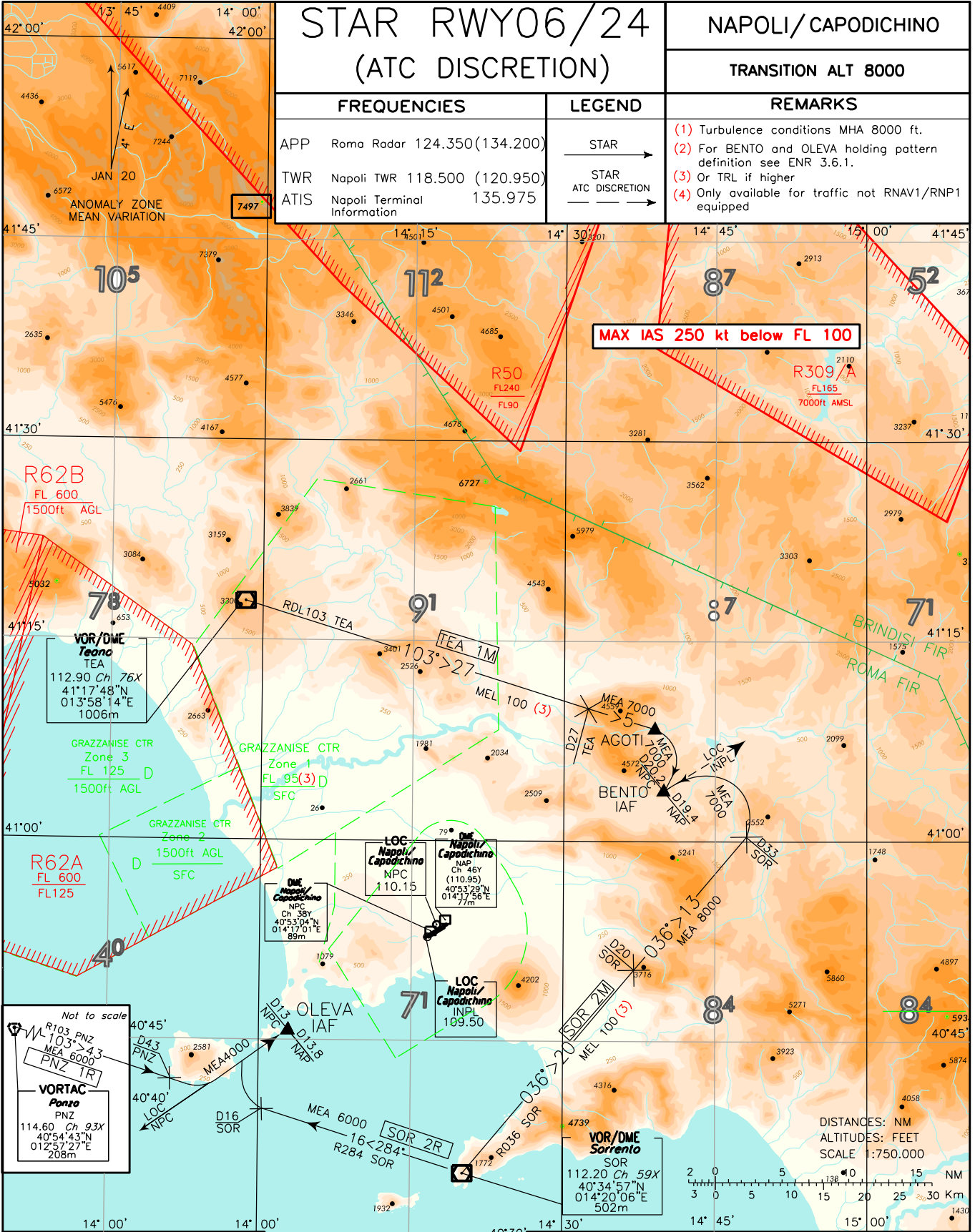
NAPOLI/CAPODICHINO

TRANSITION ALT 8000

| FREQUENCIES | | LEGEND |
|-------------|-------------------------------------|------------------|
| APP | Roma Radar 124.350 (134.200) | STAR → |
| TWR | Napoli TWR 118.500 (120.950) | STAR → |
| ATIS | Napoli Terminal Information 135.975 | ATC DISCRETION → |

| REMARKS |
|---|
| (1) Turbulence conditions MHA 8000 ft. |
| (2) For BENTO and OLEVA holding pattern definition see ENR 3.6.1. |
| (3) Or TRL if higher |
| (4) Only available for traffic not RNAV1/RNP1 equipped |

CHANGE: CHART TITLE CHANGED. REMARK 4 MODIFIED



STAR RWY06 Napoli / Capodichino (ATC DISCRETION)**SOR 2R**

SOR VOR - TR 284° (RDL 284 SOR VOR) until 16 NM SOR DME, then turn right bound to OLEVA (NPC LOC/13NM NPC DME).

MEL/MEA: SOR VOR – RDL 284/16NM SOR VOR/DME: 6000 FT; RDL 284/16NM SOR VOR/DME – OLEVA: 4000 FT

PNZ 1R

PNZ VOR - TR 103° (RDL 103 PNZ VOR) until 43 NM PNZ TAC, then turn left bound to OLEVA (NPC LOC/13NM NPC DME).

MEL/MEA: PNZ VOR – RDL 103/43NM PNZ VOR/TAC: 6000 FT; RDL 103/43NM PNZ VOR/TAC – OLEVA: 4000 FT

STAR RWY24 Napoli / Capodichino (ATC DISCRETION)**SOR 2M**

SOR VOR – TR 036° (RDL 036 SOR VOR) until 33NM SOR DME, then turn left bound to BENTO (INPL LOC/19.4NM NAP DME).

MEL/MEA: SOR VOR - RDL 036/20NM SOR VOR/DME: FL 100 (or TRL if higher); RDL 036/20NM SOR VOR/DME - RDL 036/33NM SOR VOR/DME: 8000FT; RDL 036/33NM SOR VOR/DME – BENTO: 7000 ft

TEA 1M

TEA VOR – TR 103° (RDL103 TEA VOR) – AGOTI (RDL 103/32NM TEA VOR/DME), then turn right bound to BENTO (INPL LOC/19.4NM NAP DME).

MEL/MEA: TEA VOR – RDL 103/27NM TEA VOR/DME: FL 100 (or TRL if higher); RDL 103/27NM TEA VOR – BENTO: 7000 ft

Intenzionalmente bianca

Intentionally left blank