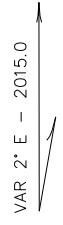
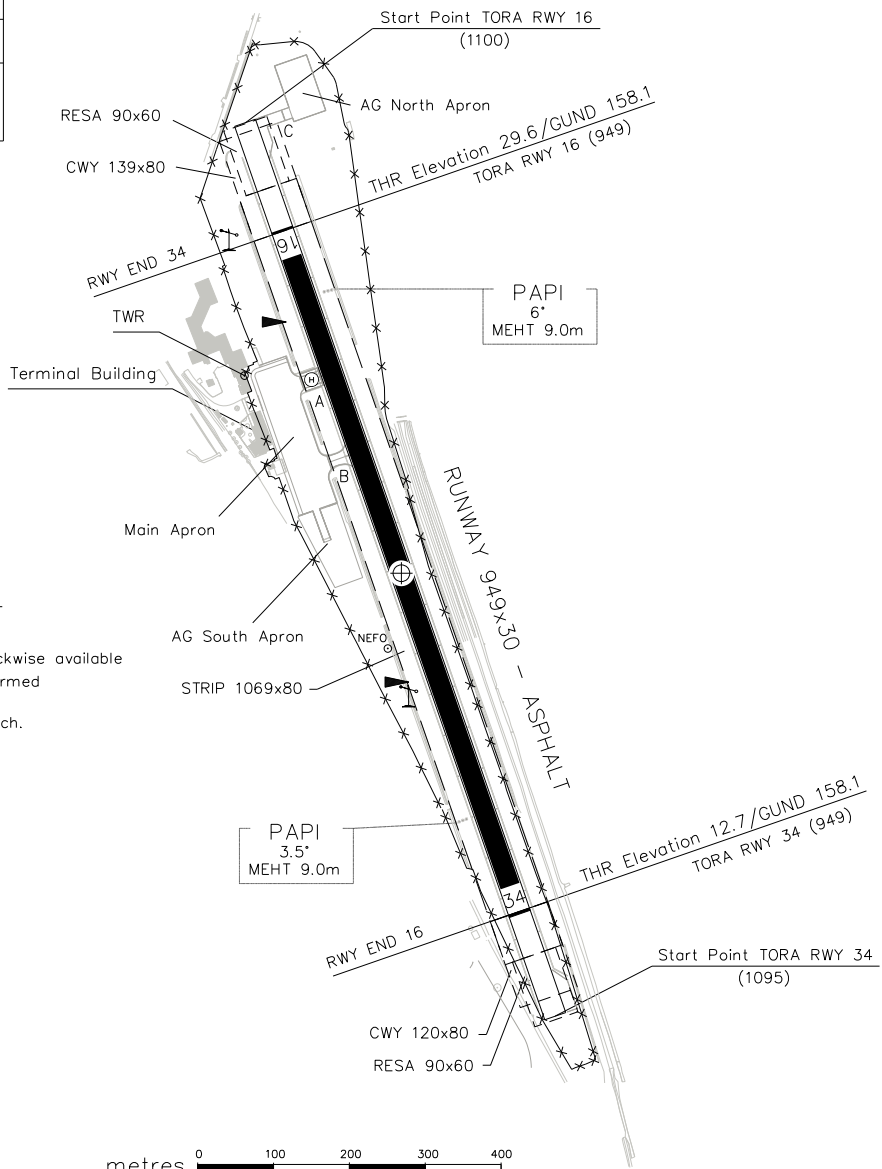


| | | | | |
|---|-----------------|------------------|-----------------|--|
| Bearings are magnetic Distances in metres Elevation in FT AMSL Coordinates WGS84 | AFIS 123.700 | AD ELEV 30 | MARINA DI CAMPO | |
| | | APRON ELEV 25 | | |

| RWY | QFU | THR | bearing strength |
|-----|------|-----------------------------------|------------------|
| 16 | 160° | N 42°45'54.68" E 010°14'16.41" | PCN 19 |
| 34 | 340° | N 42°45'25.48" E 010°14'29.52" | F/B/Y/T |

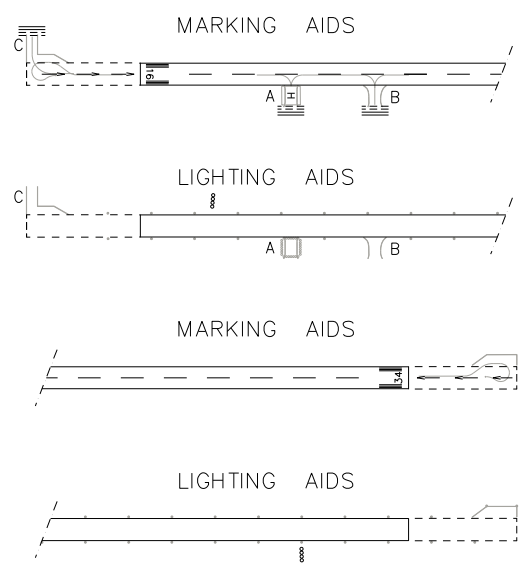
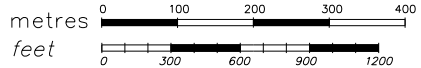


Annual rate of change 6' E

- REMARKS:
- Bearing strength of runway extension overrun RWY 34 with PCN 19/F/A/Y/T
 - PAPI RWY16 rotated in azimuth 5° clockwise available only for last 1000 m for circling performed east of RWY.
Not to be used for straight-in approach.

CHANGE: New aerodrome Code ZC

| TWY IDENT | WIDTH | bearing strength |
|-----------|-------|-------------------|
| A | 15 | PCN 19 |
| B | 15 | F/B/Y/T |
| C | 15 | PCN 11 F/A/Y/T |



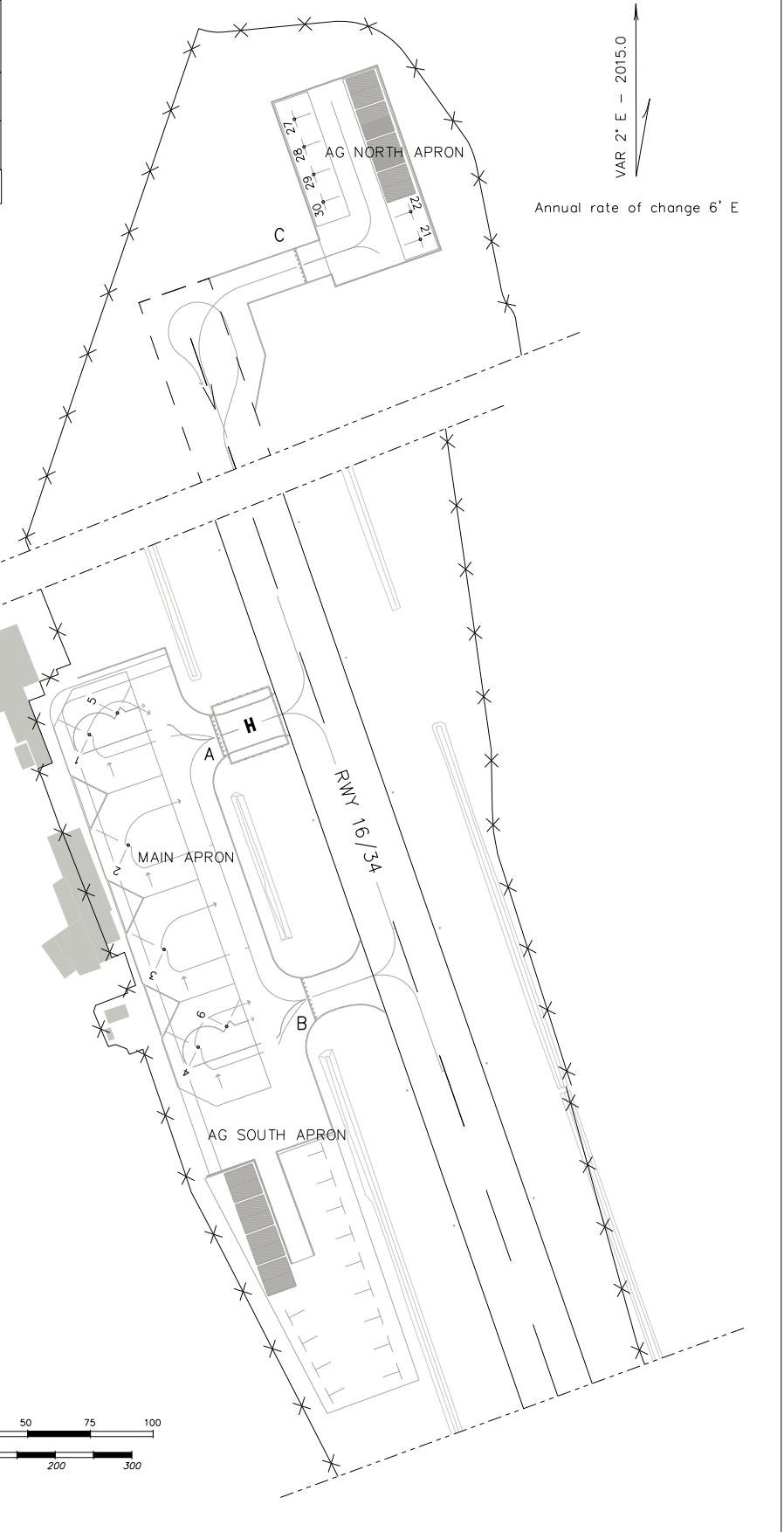
| | | | | |
|---|-----------------|------------------|-----------------|--|
| Bearings are magnetic Distances in metres Elevation in FT AMSL Coordinates WGS84 | AFIS 123.700 | AD ELEV 30 | MARINA DI CAMPO | |
| | | APRON ELEV 25 | | |

| | |
|----------------|----------------------|
| APRON | bearing strength |
| MAIN APRON | PCN 19 F/B/Y/T |
| AG NORTH APRON | PCN 10 F/A/Y/T |
| AG SOUTH APRON | 30Kg/cm ² |

STANDS COORDINATES

| MAIN APRON | | |
|------------|----------------|-----------------|
| Stands | N | E |
| 1 | 42° 45' 48.23" | 010° 14' 15.14" |
| 2 | 42° 45' 46.80" | 010° 14' 15.79" |
| 3 | 42° 45' 45.45" | 010° 14' 16.39" |
| 4 | 42° 45' 44.18" | 010° 14' 16.96" |
| 5 | 42° 45' 48.51" | 010° 14' 15.63" |
| 6 | 42° 45' 44.44" | 010° 14' 17.47" |

| AG NORTH APRON | | |
|----------------|----------------|-----------------|
| Stands | N | E |
| 21 | 42° 45' 59.95" | 010° 14' 18.65" |
| 22 | 42° 46' 00.30" | 010° 14' 18.49" |
| 27 | 42° 46' 01.52" | 010° 14' 16.47" |
| 28 | 42° 46' 01.16" | 010° 14' 16.63" |
| 29 | 42° 46' 00.80" | 010° 14' 16.79" |
| 30 | 42° 46' 00.45" | 010° 14' 16.95" |



CHANGE: New aerodrome Code ZC