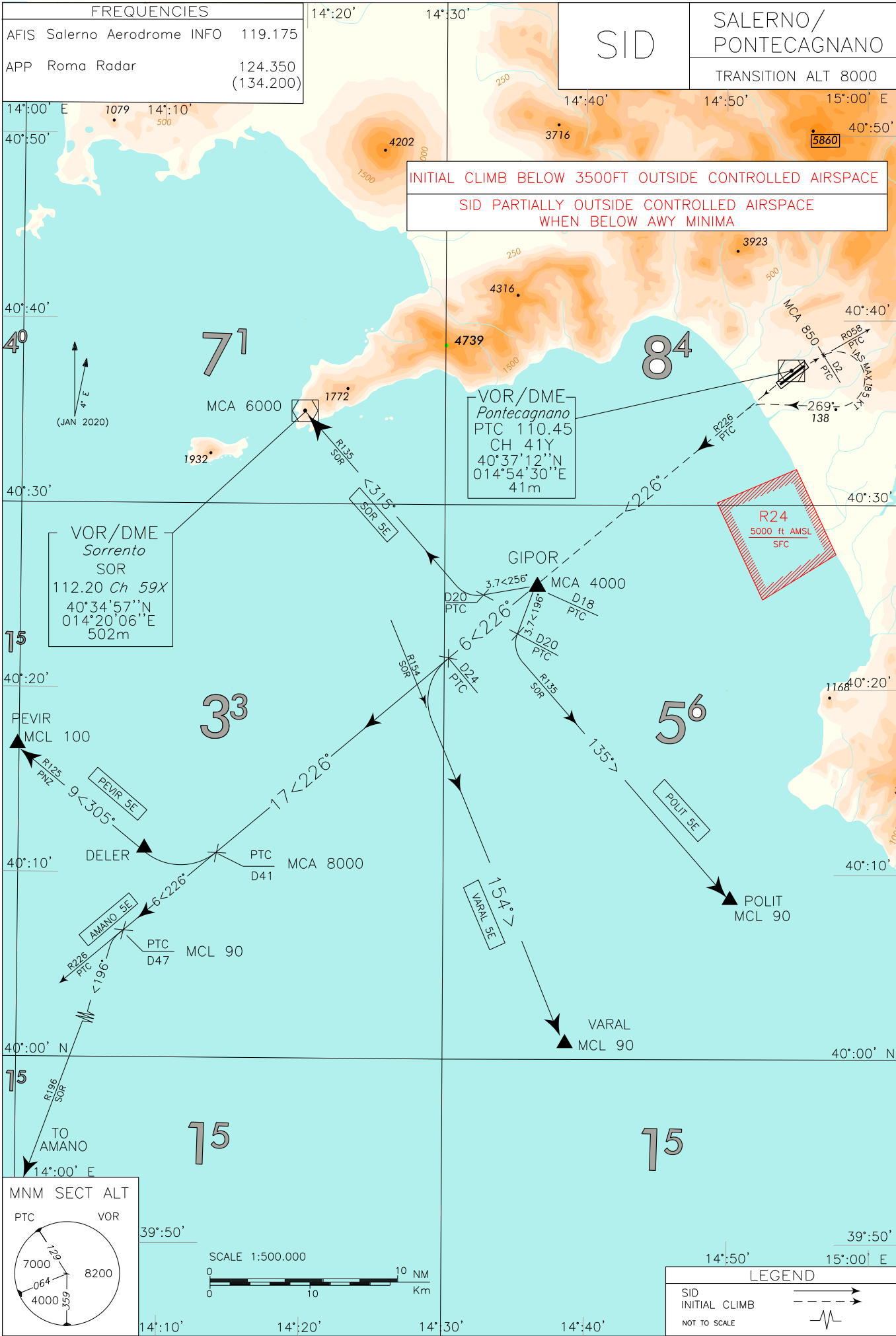


FREQUENCIES	
AFIS Salerno Aerodrome INFO	119.175
APP Roma Radar	124.350 (134.200)

SID	SALERNO/ PONTECAGNANO
	TRANSITION ALT 8000

INITIAL CLIMB BELOW 3500FT OUTSIDE CONTROLLED AIRSPACE
 SID PARTIALLY OUTSIDE CONTROLLED AIRSPACE
 WHEN BELOW AWY MINIMA

CHANGE: GEO ATS and BOX FREQUENCIES UPDATED



INITIAL CLIMB PROCEDURE RWY 05

After take-off join and follow RDL 058 PTC VOR, at 2 NM PTC DME, to be crossed at 850 ft or above, turn right (IAS MAX 185 kt during turn) on TR 269° until joining RDL 226 PTC VOR (TR 226°) bound to GIPOR.

MCA: GIPOR 4000 ft

Minimum climb gradient: 7.6% (462 ft/NM) until leaving 4000 ft.

REMARK:

Relevant obstacles located East of the aerodrome.

WARNING: Close-in obstacles penetrating OIS 2.5% exist, but they were not considered for the published procedure design gradient.

INITIAL CLIMB PROCEDURE RWY 23

After take-off proceed on RDL 226 PTC VOR (TR 226°) bound to GIPOR.

MCA: GIPOR 4000 ft

Minimum climb gradient: 5% (303 ft/NM) until leaving 4000 ft.

WARNING: Close-in obstacles penetrating OIS 2.5% exist, but they were not considered for the published procedure design gradient.

SID DESCRIPTION RWY 05/23**Initial climb procedure executed:****AMANO 5E**

After GIPOR proceed on RDL 226 PTC VOR (TR 226°) until 47 NM PTC DME, then turn left until joining RDL 196 SOR VOR (TR 196°) bound to AMANO.

MCA/MCL: RDL 226/41 NM PTC VOR/DME: 8000 ft; RDL 226/47 NM PTC VOR/DME: FL 90

PEVIR 5E

After GIPOR proceed on RDL 226 PTC VOR (TR 226°) until 41 NM PTC DME, then turn right bound to DELER and joining RDL 125 PNZ VOR (TR 305°) bound to PEVIR.

MCA/MCL: RDL 226/41 NM PTC VOR/DME: 8000 ft; PEVIR: FL 100

POLIT 5E

After GIPOR turn left on TR 196° until joining RDL 135 SOR VOR (TR135°) bound to POLIT.

MCL: POLIT: FL 90

SOR 5E

After GIPOR turn right on TR 256° until joining RDL 135 SOR VOR (TR 315°) bound to SOR VOR. Then proceed according to NAPOLI SIDs, according to ATC clearance.

MCA: SOR VOR: 6000 ft

VARAL 5E

After GIPOR proceed on RDL 226 PTC VOR (TR 226°) until 24 NM PTC DME, then turn left until joining RDL 154 SOR VOR (TR154°) bound to VARAL.

MCL: VARAL: FL 90

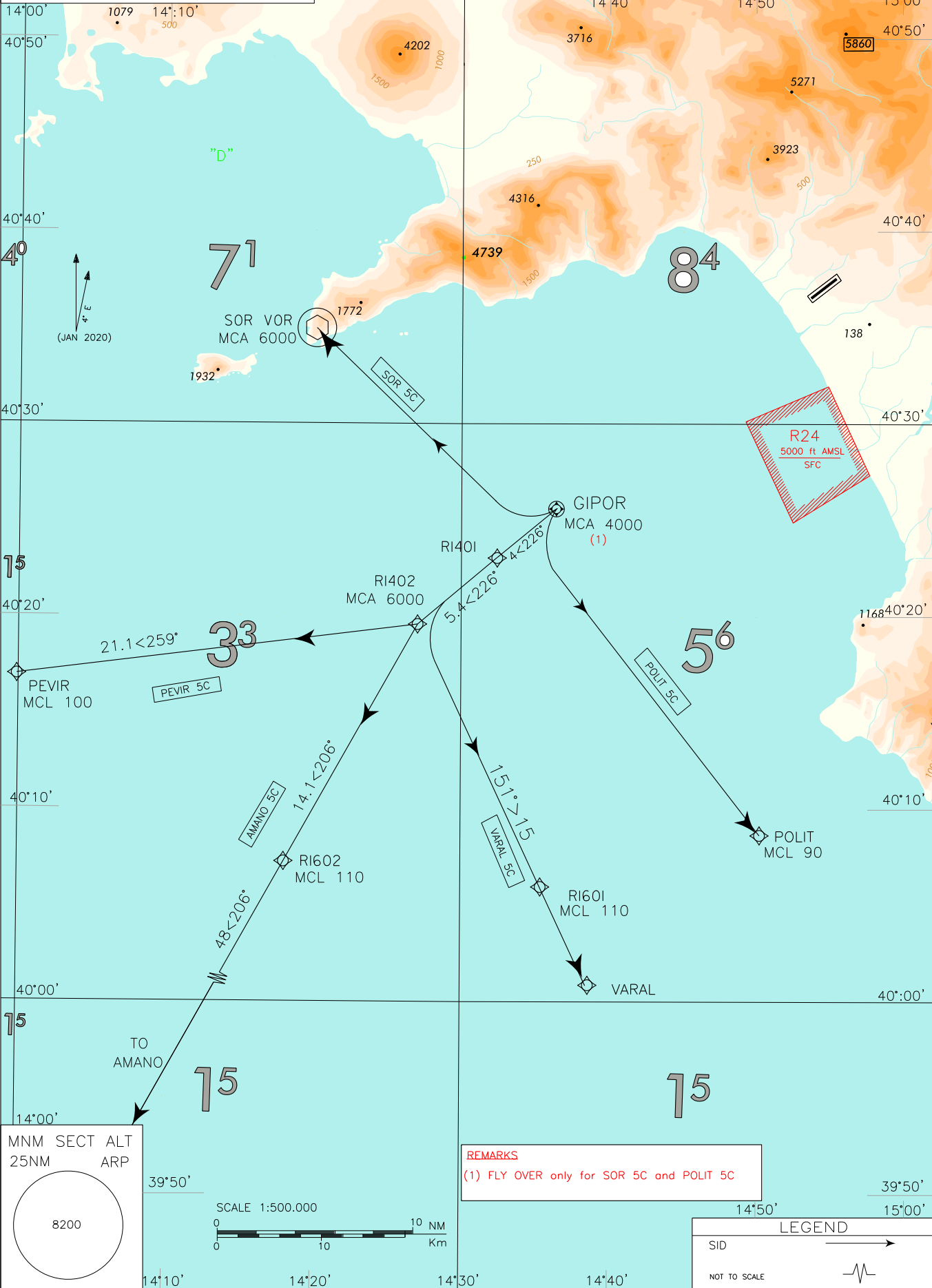
Intenzionalmente bianca

Intentionally left blank

FREQUENCIES	
AFIS Salerno Aerodrome INFO	119.175
APP Roma Radar	124.350 (134.200)

SID RNAV1	SALERNO/ PONTECAGNANO
	TRANSITION ALT 8000

CHANGE: GEO ATS and BOX FREQUENCIES UPDATED



SID RNAV1 Salerno / Pontecagnano**AMANO 5C****Remark**

Minimum climb gradient: 5% (303ft/NM) until leaving 8000ft

Path Terminator	Waypoint Identifier	Fly Over	Course °M(°T)	Magnetic Variation	Distance (NM)	Turn Direction	Altitude (ft)	Speed Limit (kt)	Navigation Specification
IF	GIPOR	-	-	-	-	-	+4000	-	RNAV1
TF	RI401	-	226° (229.9)	-	4.0	-	-	-	RNAV1
TF	RI402	-	226° (229.9)	-	5.4	-	+6000	-	RNAV1
TF	RI602	-	206° (209.3)	-	14.1	-	+FL110	-	RNAV1
TF	AMANO	-	206° (209.2)	-	48.0	-	-	-	RNAV1

PEVIR 5C

Path Terminator	Waypoint Identifier	Fly Over	Course °M(°T)	Magnetic Variation	Distance (NM)	Turn Direction	Altitude (ft)	Speed Limit (kt)	Navigation Specification
IF	GIPOR	-	-	-	-	-	+4000	-	RNAV1
TF	RI401	-	226° (229.9)	-	4.0	-	-	-	RNAV1
TF	RI402	-	226° (229.9)	-	5.4	-	+6000	-	RNAV1
TF	PEVIR	-	259° (262.8)	-	21.1		+FL100	-	RNAV1

POLIT 5C

Path Terminator	Waypoint Identifier	Fly Over	Course °M(°T)	Magnetic Variation	Distance (NM)	Turn Direction	Altitude (ft)	Speed Limit (kt)	Navigation Specification
IF	GIPOR	Y	-	-	-	-	+4000	-	RNAV1
DF	POLIT	-	-	-	-	-	+FL90	-	RNAV1

SOR 5C

Path Terminator	Waypoint Identifier	Fly Over	Course °M(°T)	Magnetic Variation	Distance (NM)	Turn Direction	Altitude (ft)	Speed Limit (kt)	Navigation Specification
IF	GIPOR	Y	-	-	-	-	+4000	-	RNAV1
DF	SOR	-	-	-	-	-	+6000	-	RNAV1

VARAL 5C**Remark**

Minimum climb gradient: 5% (303ft/NM) until leaving 8000ft

Path Terminator	Waypoint Identifier	Fly Over	Course °M(°T)	Magnetic Variation	Distance (NM)	Turn Direction	Altitude (ft)	Speed Limit (kt)	Navigation Specification
IF	GIPOR	-	-	-	-	-	+4000	-	RNAV1
TF	RI401	-	226° (229.9)	-	4.0	-	-	-	RNAV1
TF	RI402	-	226° (229.9)	-	5.4	-	+6000	-	RNAV1
TF	RI601	-	151° (154.8)	-	15.0	-	+FL110	-	RNAV1
TF	VARAL	-	151° (155.2)	-	5.6	-	-	-	RNAV1

WAYPOINT LIST

Waypoint Identifier	Coordinates
RI401	40°23'03.75" N 014°32'25.93" E
RI402	40°19'35.27" N 014°27'02.92" E
RI601	40°05'58.21"N 014°35'24.53" E
RI602	40°07'16.24"N 014°18'02.34" E