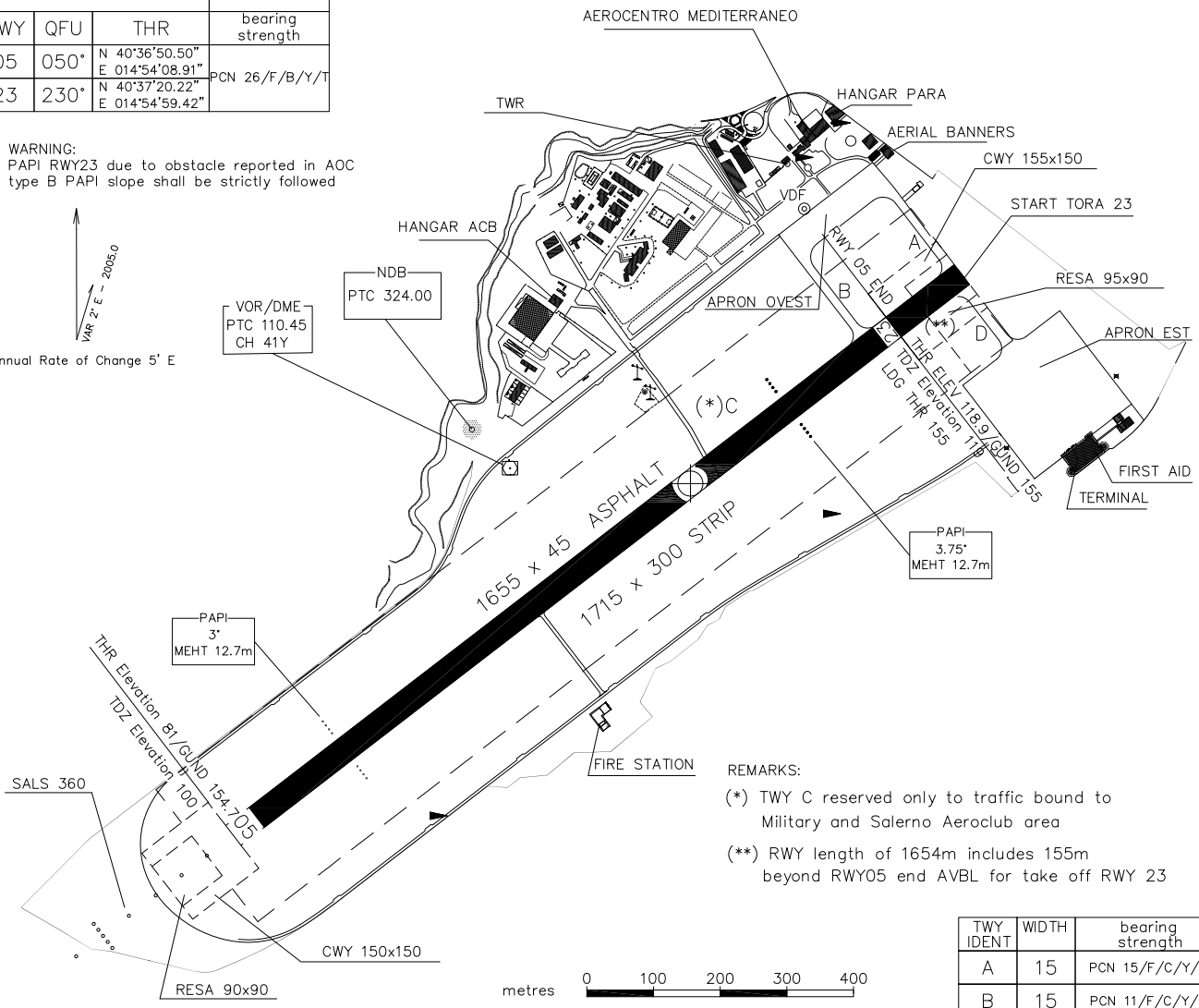


| | | | | |
|--|-----------------|-------------------|----------------------|--------------------------|
| Bearings are magnetic Distances in metres Elevation in ft AMSL Coordinates WGS 84 | AFIS 119.175 | AD ELEV 119 | SALERNO/Pontecagnano | |
| | | APRON ELEV 123 | L I R I | 40°37'12" N 014°54'45" E |

| RWY | QFU | THR | bearing strength |
|-----|------|-----------------------------------|------------------|
| 05 | 050° | N 40°36'50.50" E 014°54'08.91" | PCN 26/F/B/Y/T |
| 23 | 230° | N 40°37'20.22" E 014°54'59.42" | |

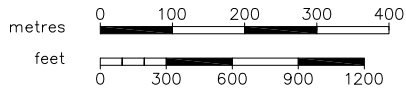
WARNING:
PAPI RWY23 due to obstacle reported in AOC
type B PAPI slope shall be strictly followed

VAR 2° E - 2008.0
Annual Rate of Change 5' E

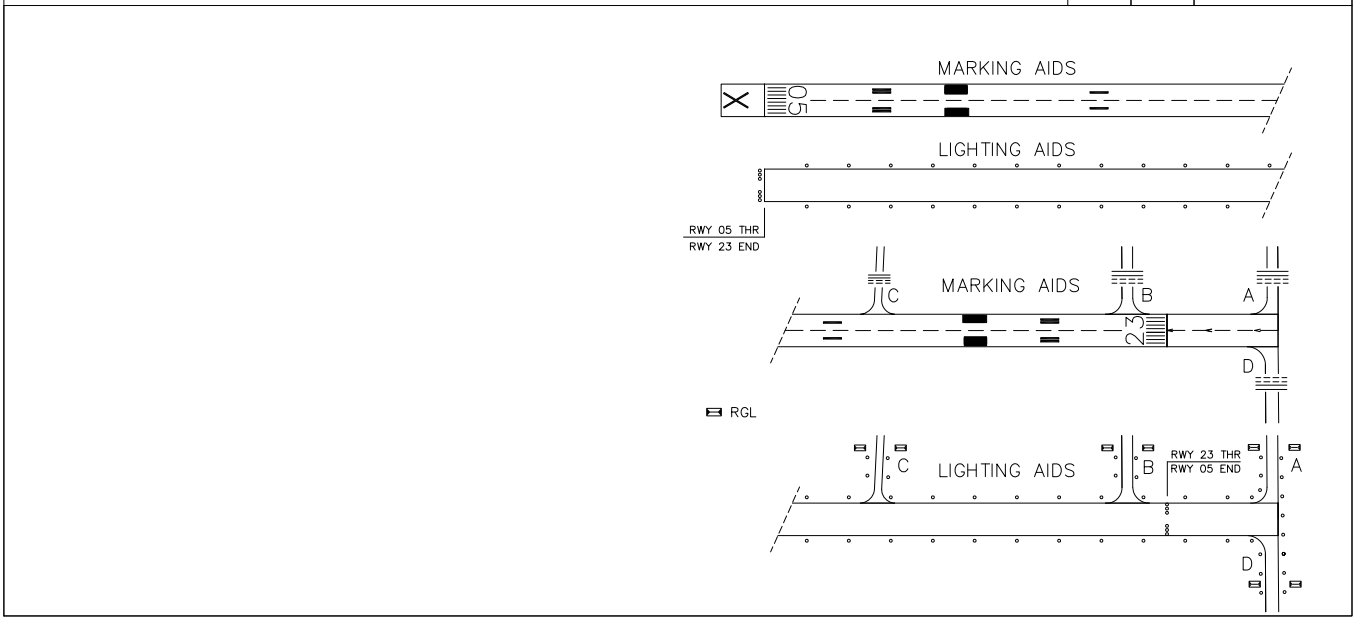


REMARKS:
(*) TWY C reserved only to traffic bound to Military and Salerno Aeroclub area
(**) RWY length of 1654m includes 155m beyond RWY05 end AVBL for take off RWY 23

| TWY IDENT | WIDTH | bearing strength |
|-----------|-------|------------------|
| A | 15 | PCN 15/F/C/Y/T |
| B | 15 | PCN 11/F/C/Y/T |
| C | 10 | PCN 12/F/C/Y/T |
| D | 18 | PCN 36/F/B/Y/T |



CHANGE: Data provider and updated chart

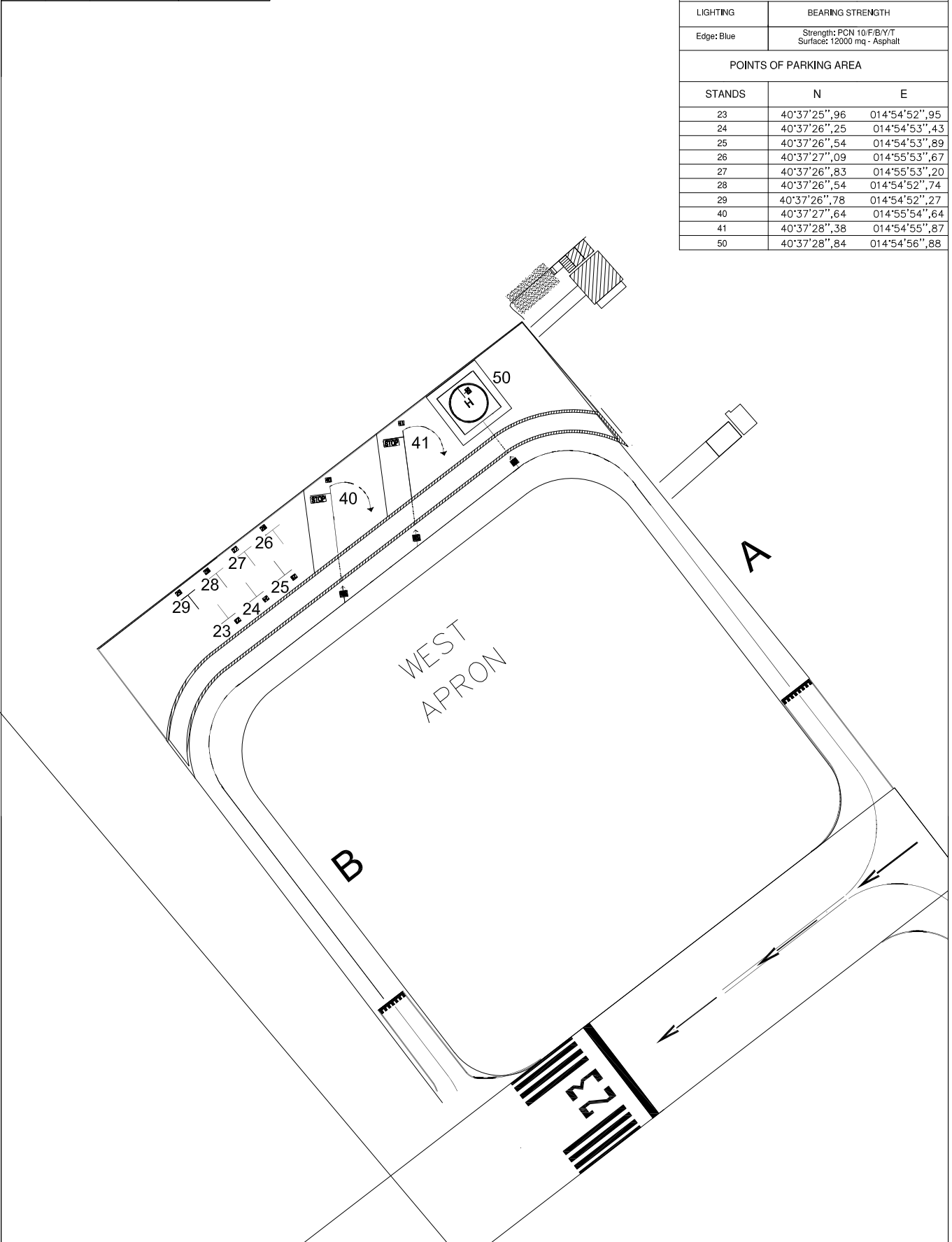


AIP Italia AIRCRAFT PARKING DOCKING CHART – WEST APRON AD 2 LIRI 2-3

| | | | | |
|--|---------|-------------------|----------------------|--------------------------|
| Bearings are magnetic Distances in metres Elevation in ft AMSL Coordinates WGS 84 | AFIS | AD ELEV 119 | SALERNO/Pontecagnano | |
| | 119.175 | APRON ELEV 123 | L I R I | 40°37'12" N 014°54'45" E |

| WEST APRON (Stands 23-29, 40, 41, 50) | | |
|---------------------------------------|---|---------------|
| LIGHTING | BEARING STRENGTH | |
| Edge: Blue | Strength: PCN 10/F/B/Y/T Surface: 12000 mq - Asphalt | |
| POINTS OF PARKING AREA | | |
| STANDS | N | E |
| 23 | 40°37'25",96 | 014°54'52",95 |
| 24 | 40°37'26",25 | 014°54'53",43 |
| 25 | 40°37'26",54 | 014°54'53",89 |
| 26 | 40°37'27",09 | 014°55'53",67 |
| 27 | 40°37'26",83 | 014°55'53",20 |
| 28 | 40°37'26",54 | 014°54'52",74 |
| 29 | 40°37'26",78 | 014°54'52",27 |
| 40 | 40°37'27",64 | 014°55'54",64 |
| 41 | 40°37'28",38 | 014°54'55",87 |
| 50 | 40°37'28",84 | 014°54'56",88 |

CHANGE: Data provider updated

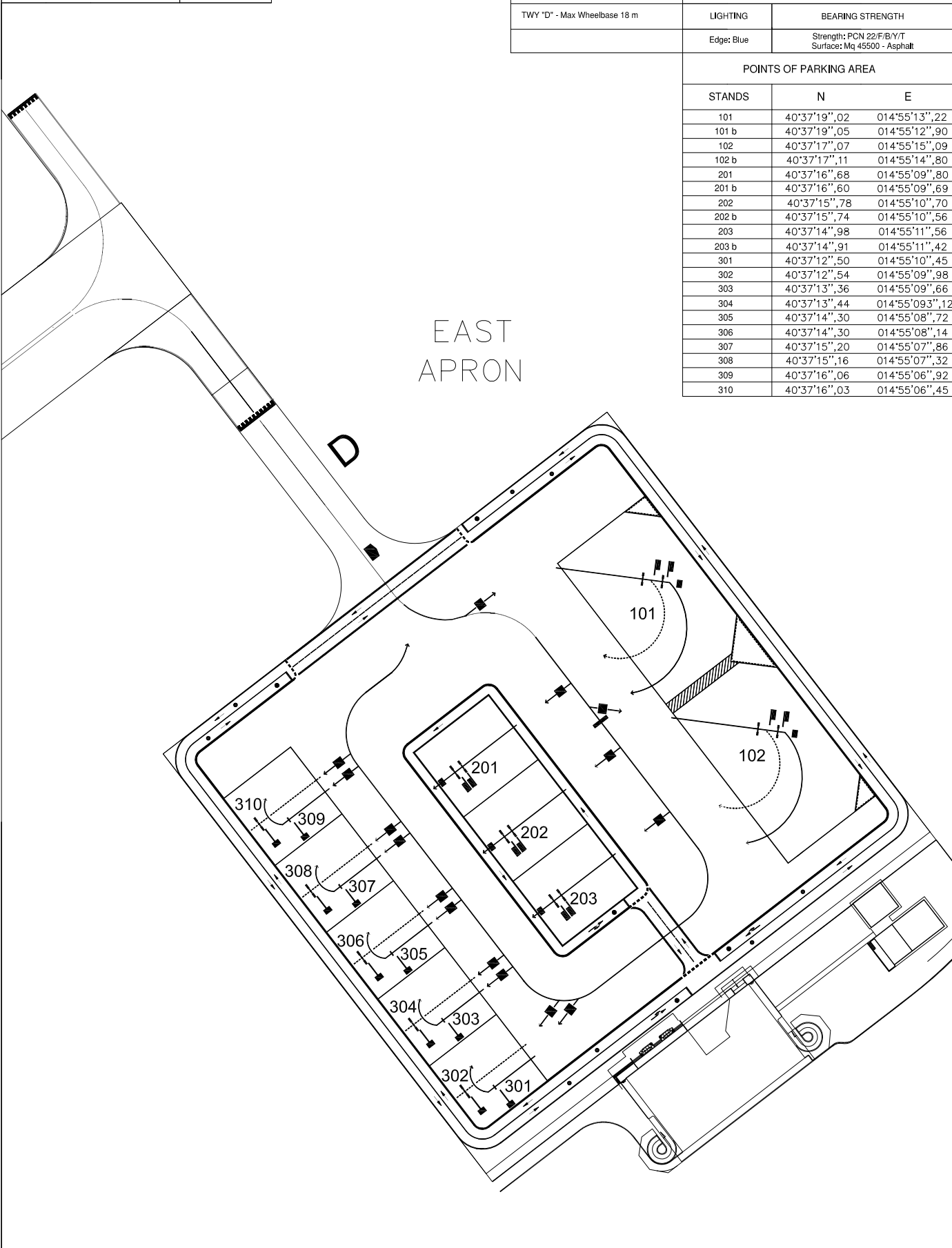


AIP Italia AIRCRAFT PARKING DOCKING CHART – EAST APRON AD 2 LIRI 2-5

| | | | | |
|--|-----------------|-------------------|----------------------|--------------------------|
| Bearings are magnetic Distances in metres Elevation in ft AMSL Coordinates WGS 84 | AFIS 119.175 | AD ELEV 119 | SALERNO/Pontecagnano | |
| | | APRON ELEV 123 | L I R I | 40°37'12" N 014°54'45" E |

| | | |
|------------------------------|---|---|
| CAA'S PROVISIONS | EAST APRON (Stands 101-102, 201-203, 301-310) | |
| TWY "D" - Max Wheelbase 18 m | LIGHTING | BEARING STRENGTH |
| | Edge: Blue | Strength: PCN 22/F/B/Y/T Surface: Mq 45500 - Asphalt |

| POINTS OF PARKING AREA | | |
|------------------------|--------------|---------------|
| STANDS | N | E |
| 101 | 40°37'19",02 | 014°55'13",22 |
| 101 b | 40°37'19",05 | 014°55'12",90 |
| 102 | 40°37'17",07 | 014°55'15",09 |
| 102 b | 40°37'17",11 | 014°55'14",80 |
| 201 | 40°37'16",68 | 014°55'09",80 |
| 201 b | 40°37'16",60 | 014°55'09",69 |
| 202 | 40°37'15",78 | 014°55'10",70 |
| 202 b | 40°37'15",74 | 014°55'10",56 |
| 203 | 40°37'14",98 | 014°55'11",56 |
| 203 b | 40°37'14",91 | 014°55'11",42 |
| 301 | 40°37'12",50 | 014°55'10",45 |
| 302 | 40°37'12",54 | 014°55'09",98 |
| 303 | 40°37'13",36 | 014°55'09",66 |
| 304 | 40°37'13",44 | 014°55'09",12 |
| 305 | 40°37'14",30 | 014°55'08",72 |
| 306 | 40°37'14",30 | 014°55'08",14 |
| 307 | 40°37'15",20 | 014°55'07",86 |
| 308 | 40°37'15",16 | 014°55'07",32 |
| 309 | 40°37'16",06 | 014°55'06",92 |
| 310 | 40°37'16",03 | 014°55'06",45 |



CHANGE: Data provider updated