

NOISE ABATEMENT PROCEDURES

1) Departure tracks include Noise Abatement Routing.

INITIAL CLIMB PROCEDURE RWY 25

Warning: “Close in “ obstacles penetrating OIS 2.5% exist, but they were not considered for the published procedure design gradient
Remarks

1. Minimum suggested climb gradient: 425 ft/NM (7%) until passing 500 ft.
2. Non RNAV1 equipped aircraft shall inform Fiumicino TWR at start-up.

XIBRI 5A

Path Terminator	Waypoint Identifier	Fly Over	Course °M (°T)	Magnetic Variation	Distance (NM)	Turn Direction	Altitude (Ft)	Speed Limit (Kt)	Navigation Specification
CA	-	-	247° (249.7°)	3°	-	-	+410	-	RNAV1
CF	RF777	-	247° (249.7°)	3°	-	-	-	200	RNAV1
TF	RF786	-	217° (220.0°)	-	3.0	-	-	200	RNAV1
TF	XIBRI	-	175° (178.0°)	-	11.8	-	+3000	-	RNAV1

SOSAK 5A

Path Terminator	Waypoint Identifier	Fly Over	Course °M (°T)	Magnetic Variation	Distance (NM)	Turn Direction	Altitude (Ft)	Speed Limit (Kt)	Navigation Specification
CA	-	-	247° (249.7°)	3°	-	-	+410	-	RNAV1
CF	RF777	-	247° (249.7°)	3°	-	-	-	200	RNAV1
TF	RF787	-	265° (268.0°)	-	2.7	-	-	200	RNAV1
TF	RF789	-	220° (222.9°)	-	7.1	-	-	200	RNAV1
TF	SOSAK	-	177° (180.0°)	-	5.1	-	+3000	-	RNAV1

XENOL 5A

Path Terminator	Waypoint Identifier	Fly Over	Course °M (°T)	Magnetic Variation	Distance (NM)	Turn Direction	Altitude (Ft)	Speed Limit (Kt)	Navigation Specification
CA	-	-	247° (249.7°)	3°	-	-	+410	-	RNAV1
CF	RF777	-	247° (249.7°)	3°	-	-	-	200	RNAV1
TF	RF791	-	265° (267.9°)	-	5.0	-	-	-	RNAV1
TF	RF788	-	267° (269.7°)	-	11.6	-	-	-	RNAV1
TF	XENOL	-	267° (269.5°)	-	13.0	-	+4000	-	RNAV1

NENIG 5A

Path Terminator	Waypoint Identifier	Fly Over	Course °M (°T)	Magnetic Variation	Distance (NM)	Turn Direction	Altitude (Ft)	Speed Limit (Kt)	Navigation Specification
CA	-	-	247° (249.7°)	3°	-	-	+410	-	RNAV1
CF	RF777	-	247° (249.7°)	3°	-	-	-	200	RNAV1
TF	RF791	-	265° (267.9°)	-	5.0	-	-	-	RNAV1
TF	RF788	-	267° (269.7°)	-	11.6	-	-	-	RNAV1
TF	NENIG	-	298° (300.6°)	-	13.0	-	+4000	-	RNAV1

SOSIV 5A

Path Terminator	Waypoint Identifier	Fly Over	Course °M (°T)	Magnetic Variation	Distance (NM)	Turn Direction	Altitude (Ft)	Speed Limit (Kt)	Navigation Specification
CA	-	-	247° (249.7°)	3°	-	-	+410	-	RNAV1
CF	RF792	-	247° (249.7°)	3°	-	-	-	200	RNAV1
TF	RF706	-	305° (308.2°)	-	5.2	-	+3000	200	RNAV1
TF	RF707	-	341° (344.4°)	-	7.1	-	+6000	-	RNAV1
TF	RF708	-	353° (355.8°)	-	7.3	-	+FL110	-	RNAV1
TF	SOSIV	-	353° (355.8°)	-	6.3	-	-	-	RNAV1

SOSAK 5D (ATC DISCRETION)

Path Terminator	Waypoint Identifier	Fly Over	Course °M (°T)	Magnetic Variation	Distance (NM)	Turn Direction	Altitude (Ft)	Speed Limit (Kt)	Navigation Specification
CA	-	-	247° (249.7°)	3°	-	-	+410	-	RNAV1
CF	RF777	-	247° (249.7°)	3°	-	-	-	200	RNAV1
TF	RF786	-	217° (220.0°)	-	3.0	-	-	200	RNAV1
TF	SOSAK	-	212° (214.6°)	-	9.8	-	+3000	-	RNAV1

SOSIV 6R (ATC DISCRETION)

Path Terminator	Waypoint Identifier	Fly Over	Course °M (°T)	Magnetic Variation	Distance (NM)	Turn Direction	Altitude (Ft)	Speed Limit (Kt)	Navigation Specification
CA	-	-	247° (249.7°)	3°	-	-	+410	-	RNAV1
CF	RF792	-	247° (249.7°)	3°	-	-	-	200	RNAV1
TF	RF706	-	305° (308.2°)	-	5.2	-	+3000	200	RNAV1
TF	RF711	-	274° (276.4°)	-	13.1	-	+6000	-	RNAV1
TF	RF712	-	025° (028.0°)	-	15.2	-	+FL110	-	RNAV1
TF	SOSIV	-	025° (028.0°)	-	6.3	-	-	-	RNAV1

WAYPOINT LIST

Waypoint Identifier	Coordinates
RF706	41°50'34.9"N 012°06'13.6"E
RF707	41°57'25.4"N 012°03'40.6"E
RF708	42°04'42.2"N 012°02'57.8"E
RF711	41°52'03.4"N 011°48'47.6"E
RF712	42°05'26.0"N 011°58'21.1"E
RF777	41°47'36.1"N 012°12'38.0"E
RF788	41°47'23.1"N 011°50'30.7"E
RF791	41°47'25.4"N 012°05'57.2"E
RF792	41°47'20.8"N 012°11'42.8"E
RF786	41°45'18.1"N 012°10'03.5"E
RF787	41°47'30.5"N 012°09'05.6"E
RF789	41°42'18.8"N 012°02'38.0"E

Intenzionalmente bianca

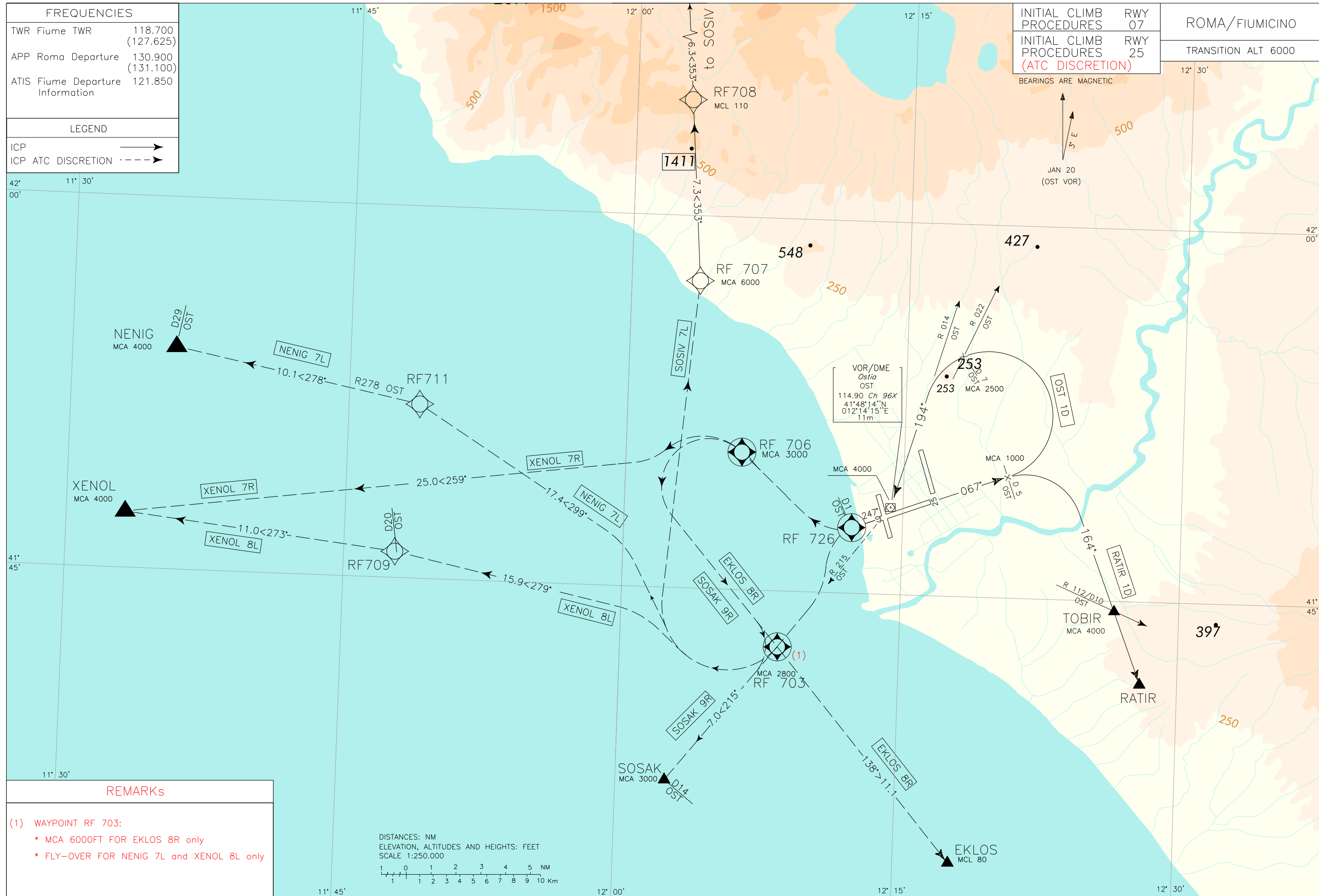
Intentionally left blank

FREQUENCIES	
TWR Fiume TWR	118.700 (127.625)
APP Roma Departure	130.900 (131.100)
ATIS Fiume Departure Information	121.850

LEGEND	
ICP	→
ICP ATC DISCRETION	- - - →

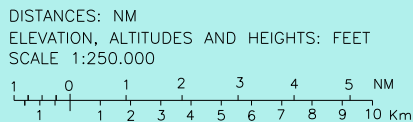
INITIAL CLIMB PROCEDURES	RWY	ROMA/FIUMICINO
	07	
	25	
INITIAL CLIMB PROCEDURES (ATC DISCRETION)		TRANSITION ALT 6000

CHANGE: ICP RWY07 RENAMED



REMARKS

(1) WAYPOINT RF 703:
 * MCA 6000FT FOR EKLOS 8R only
 * FLY-OVER FOR NENIG 7L and XENOL 8L only



NOISE ABATEMENT PROCEDURES

Departure tracks include Noise Abatement Routing.

INITIAL CLIMB PROCEDURE RWY 25 (ATC DISCRETION)

- **Warning:** “Close in “ obstacles penetrating OIS 2.5% exist, but they were not considered for the published procedure design gradient

Remarks

1. Minimum suggested climb gradient: 410 ft/NM until passing 500 ft.
2. Non RNAV1 equipped aircraft shall inform Fiumicino TWR at start-up. During independent parallel approaches they will expect :
 - a. In case of RWY 16 in use : initial clearance via NENIG (RDL 278 OST VOR) and then rerouted, according to traffic situation, through radar vectoring bound to the planned exit point.
 - b. In case of RWY 34 in use: initial clearance via SOSAK (RDL 215 OST VOR) and then rerouted, according to traffic situation, through radar vectoring bound to the planned exit point.

EKLOS 8R (ATC discretion)

Path Terminator	Waypoint Identifier	Fly Over	Course °M(°T)	Magnetic Variation	Distance (NM)	Turn Direction	Altitude (ft)	Speed Limit (kt)	Navigation Specification
CA	-	-	247 (249.7)	-	-	-	+410	-	RNAV1
CF	RF726	Y	247 (249.7)	3	-	-	-	-210	RNAV1
DF	RF706	Y	-	-	-	-	+3000	-230	RNAV1
DF	RF703	-	-	-	-	-	+6000	-	RNAV1
TF	EKLOS	-	138 (140.9)	-	11.1	-	+FL80	-	RNAV1

NENIG 7L (ATC discretion)

Path Terminator	Waypoint Identifier	Fly Over	Course °M(°T)	Magnetic Variation	Distance (NM)	Turn Direction	Altitude (ft)	Speed Limit (kt)	Navigation Specification
CA	-	-	247 (249.7)	-	-	-	+410	-	RNAV1
CF	RF726	Y	247 (249.7)	3	-	-	-	-210	RNAV1
DF	RF703	Y	-	-	-	-	+2800	-	RNAV1
TF	RF711	-	299 (302.1)	-	17.4	-	-	-	RNAV1
TF	NENIG	-	278 (281.1)	-	10.1	-	+4000	-	RNAV1

SOSAK 9R (ATC Discretion)

Path Terminator	Waypoint Identifier	Fly Over	Course °M(°T)	Magnetic Variation	Distance (NM)	Turn Direction	Altitude (ft)	Speed Limit (kt)	Navigation Specification
CA	-	-	247 (249.7)	-	-	-	+410	-	RNAV1
CF	RF726	Y	247 (249.7)	3	-	-	-	-210	RNAV1
DF	RF706	Y	-	-	-	-	+3000	-230	RNAV1
DF	RF703	-	-	-	-	-	-	-	RNAV1
TF	SOSAK	-	215 (218.3)	-	7.0	-	-	-	RNAV1

SOSIV 7L (ATC Discretion)

Path Terminator	Waypoint Identifier	Fly Over	Course °M(°T)	Magnetic Variation	Distance (NM)	Turn Direction	Altitude (ft)	Speed Limit (kt)	Navigation Specification
CA	-	-	247 (249.7)	-	-	-	+410	-	RNAV1
CF	RF726	Y	247 (249.7)	3	-	-	-	-210	RNAV1
DF	RF703	-	-	-	-	-	+2800	-	RNAV1
DF	RF707	-	-	-	-	-	+6000	-	RNAV1
TF	RF708	-	353 (355.8)	-	7.3	-	+FL110	-	RNAV1
TF	SOSIV	-	353 (355.8)	-	6.3	-	-	-	RNAV1

XENOL 8L (ATC Discretion)

Path Terminator	Waypoint Identifier	Fly Over	Course °M(°T)	Magnetic Variation	Distance (NM)	Turn Direction	Altitude (ft)	Speed Limit (kt)	Navigation Specification
CA	-	-	247 (249.7)	-	-	-	+410	-	RNAV1
CF	RF726	Y	247 (249.7)	3	-	-	-	-210	RNAV1
DF	RF703	Y	-	-	-	-	+2800	-	RNAV1
TF	RF709	-	279 (281.9)	-	15.9	-	-	-	RNAV1
TF	XENOL	-	273 (276.2)	-	11.0	-	+4000	-	RNAV1

XENOL 7R (ATC Discretion)

Path Terminator	Waypoint Identifier	Fly Over	Course °M(°T)	Magnetic Variation	Distance (NM)	Turn Direction	Altitude (ft)	Speed Limit (kt)	Navigation Specification
CA	-	-	247 (249.7)	-	-	-	+410	-	RNAV1
CF	RF726	Y	247 (249.7)	3	-	-	-	-210	RNAV1
DF	RF706	Y	-	-	-	-	+3000	-	RNAV1
TF	XENOL	-	259 (262.3)	-	25.0	-	+4000	-	RNAV1

WAYPOINT LIST

Waypoint Identifier	Coordinates
RF702	41°49'49.0"N 012°03'46.1"E
RF703	41°42'47.4"N 012°08'28.4"E
RF706	41°50'34.9"N 012°06'13.6"E
RF707	41°57'25.4"N 012°03'40.6"E
RF708	42°04'42.2"N 012°02'57.8"E
RF709	41°46'05.8"N 011°47'44.5"E
RF711	41°52'03.4"N 011°48'47.6"E
RF712	42°05'26.0"N 011°58'21.1"E
RF713	41°39'45.4"N 012°12'09.9"E
RF726	41°47'43.7"N 012°13'05.6"E

INITIAL CLIMB PROCEDURE RWY 07**REMARKS**

- 1) In order to reduce the noise over surrounding settlements, pilots shall comply with the above MCA and, when RWY 07 is used, shall contain turns within 8 NM OST DME.
- 2) Pilots shall adopt a minimum climb gradient in accordance with ICAO-Annex 6 provisions for a safe obstacles overflying. Such climb gradient shall be maintained in any foreseeable circumstance.

After take-off climb on TR 067° to cross 5 NM OST DME at 1000 ft or above, then:

- a) OST 1D: Turn left to intercept and follow RDL 014 OST VOR bound to OST VOR and then expect ATC instruction.

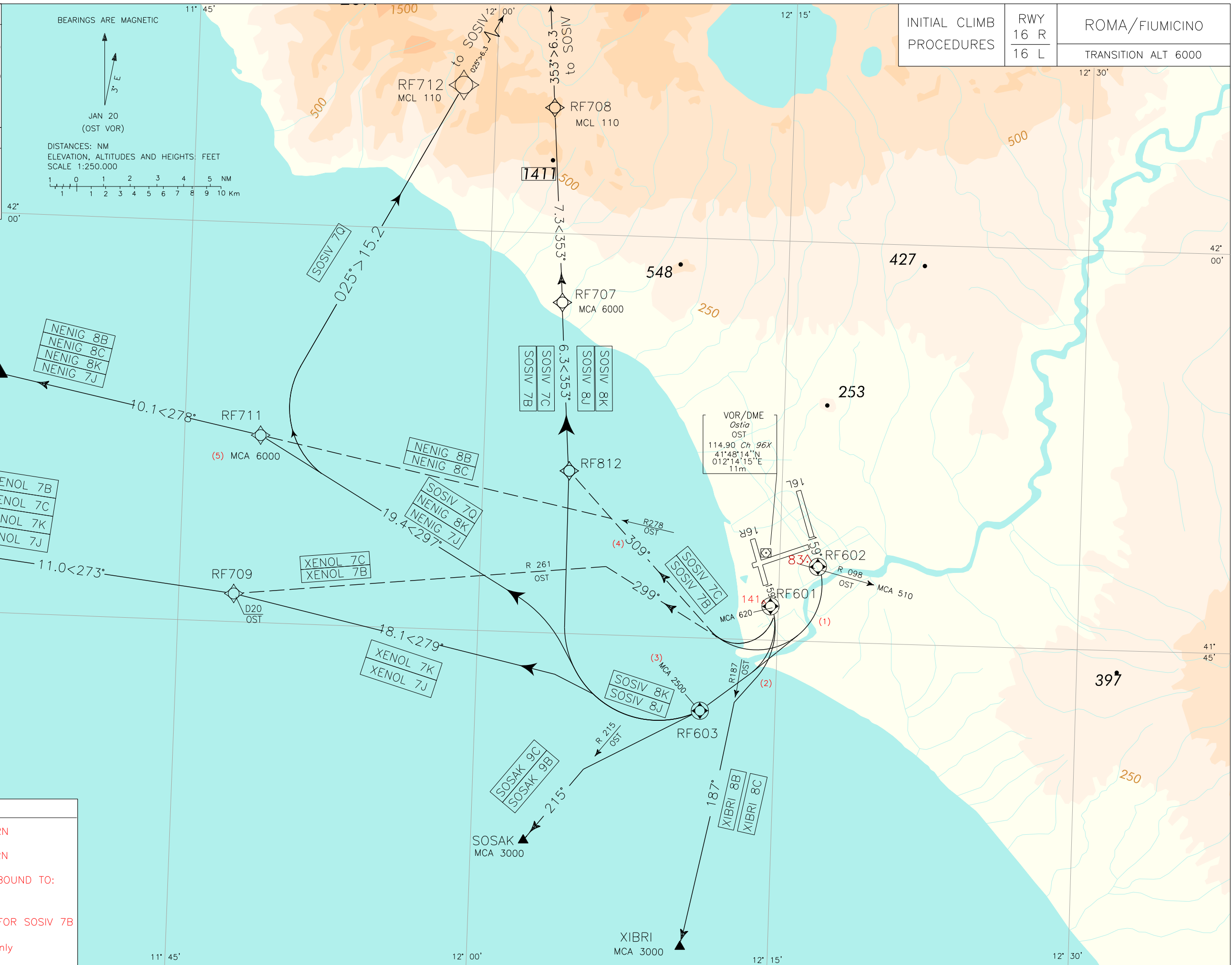
MCA: INT RDL 022/7NM OST VOR/DME 2500FT; OST VOR 4000FT

- b) RATIR 1D: Turn right to RATIR, then proceed according to ATC detailed clearance.

MCA: TOBIR (RDL 112/10NM OST VOR/DME): 4000 FT

FREQUENCIES	
TWR Fiume TWR	118.700 (127.625)
APP Roma Departure	130.900 (131.100)
ATIS Fiume Departure Information	121.850

LEGEND	
ICP	→
ICP ATC DISCRETION	- - - - - →



INITIAL CLIMB PROCEDURES	RWY 16 R	ROMA/FIUMICINO
	16 L	

CHANGE: MAGNETIC DECLINATION UPDATED

REMARKS
(1) IAS MAX 210 KT DURING TURN
(2) IAS MAX 220 KT DURING TURN
(3) MCA 2500FT ONLY FOR ICP BOUND TO: NENIG - SOSIV - XENOL
(4) TR 309° INDICATION EXCEPT FOR SOSIV 7B
(5) MCA 6000FT for SOSIV 7Q only

NOISE ABATEMENT PROCEDURES

- a) RWY 16R (159°) – Apply noise abatement technique.
- b) RWY 16L (159°) – Apply noise abatement technique.
- c) Non RNAV1 equipped aircraft shall inform Fiumicino TWR at start-up.
- d) During independent parallel approaches for RWY 16L/R non RNAV1 aircraft planning via via XENOL – NENIG will be initially cleared via SOSAK departure (RDL 215 OST VOR) and then rerouted, according to traffic situation, through radar vectoring bound to the planned exit point.
- e) Pilots shall adopt a minimum climb gradient in accordance with ICAO-Annex 6 provisions for a safe obstacles overflying. Such climb gradient shall be maintained in any foreseeable circumstance.

INITIAL CLIMB PROCEDURE RWY 16R**NENIG 8B (ATC discretion)**

After take-off maintain RWY heading until 2 NM OST DME (MCA 620ft) then turn right (IAS MAX 220 kt) on TR309° to join RDL 278 OST VOR bound to NENIG.

MCA: D2 OST DME: 620FT; NENIG: 4000FT

NENIG 8K

Path Terminator	Waypoint Identifier	Fly Over	Course °M(°T)	Magnetic Variation	Distance (NM)	Turn Direction	Altitude (ft)	Speed Limit (kt)	Navigation Specification
CA	-	-	159 (162.6)	-	-	-	+410	-	RNAV1
CF	RF601	Y	159 (162.6)	3	-	-	+620	-220	RNAV1
DF	RF603	Y	-	-	-	-	+2500	-	RNAV1
TF	RF711	-	297 (300.2)	-	19.4	-	-	-	RNAV1
TF	NENIG	-	278 (281.1)	-	10.1	-	+4000	-	RNAV1

SOSAK 9B

After take-off maintain RWY heading until 2 NM OST DME (MCA 620ft) then turn right (IAS MAX 220 kt) to join RDL 215 OST VOR bound to SOSAK.

MCA: RF601: 620FT; SOSAK: 3000FT

Path Terminator	Waypoint Identifier	Fly Over	Course °M(°T)	Magnetic Variation	Distance (NM)	Turn Direction	Altitude (ft)	Speed Limit (kt)	Navigation Specification
CA	-	-	159 (162.6)	-	-	-	+410	-	Conventional/RNAV1
CF	RF601	Y	159 (162.6)	3	-	-	+620	-220	Conventional/RNAV1
DF	RF603	Y	-	-	-	-	-	-	Conventional/RNAV1
CF	SOSAK	-	215 (218.4)	-	-	-	+3000	-	Conventional/RNAV1

SOSIV 7B (ATC DISCRETION)

Path Terminator	Waypoint Identifier	Fly Over	Course °M(°T)	Magnetic Variation	Distance (NM)	Turn Direction	Altitude (ft)	Speed Limit (kt)	Navigation Specification
CA	-	-	159 (162.6)	-	-	-	+410	-	RNAV1
CF	RF601	Y	159 (162.6)	3	-	-	+620	-220	RNAV1
DF	RF812	-	-	-	-	-	-	-	RNAV1
TF	RF707	-	353 (355.8)	-	6.3	-	+6000	-	RNAV1
TF	RF708	-	353 (355.8)	-	7.3	-	+FL110	-	RNAV1
TF	SOSIV	-	353 (355.8)	-	6.3	-	-	-	RNAV1

SOSIV 8K

Path Terminator	Waypoint Identifier	Fly Over	Course °M(°T)	Magnetic Variation	Distance (NM)	Turn Direction	Altitude (ft)	Speed Limit (kt)	Navigation Specification
CA	-	-	159 (162.6)	-	-	-	+410	-	RNAV1
CF	RF601	Y	159 (162.6)	3	-	-	+620	-220	RNAV1
DF	RF603	Y	-	-	-	-	+2500	-	RNAV1
DF	RF812	-	-	-	-	-	-	-	RNAV1
TF	RF707	-	353 (355.8)	-	6.3	-	+6000	-	RNAV1
TF	RF708	-	353 (355.8)	-	7.3	-	+FL110	-	RNAV1
TF	SOSIV	-	353 (355.8)	-	6.3	-	-	-	RNAV1

XENOL 7B (ATC discretion)

After take-off maintain RWY heading until 2 NM OST DME (MCA 620FT) then turn right (IAS MAX 220 kt) on TR299° to join RDL 261 OST VOR until 20NM OST DME then proceed on TR273° bound to XENOL

MCA: D2 OST DME: 620FT; XENOL: 4000FT

XENOL 7K

Path Terminator	Waypoint Identifier	Fly Over	Course °M(°T)	Magnetic Variation	Distance (NM)	Turn Direction	Altitude (ft)	Speed Limit (kt)	Navigation Specification
CA	-	-	159 (162.6)	-	-	-	+410	-	RNAV1
CF	RF601	Y	159 (162.6)	3	-	-	+620	-220	RNAV1
DF	RF603	Y	-	-	-	-	+2500	-	RNAV1
TF	RF709	-	279 (281.2)	-	18.1	-	-	-	RNAV1
TF	XENOL	-	273 (276.2)	-	11.0	-	+4000	-	RNAV1

XIBRI 8B

After take-off maintain RWY heading until 2 NM OST DME (MCA 620ft) then turn right (IAS MAX 220 kt) on RDL 187 OST VOR bound to XIBRI

MCA: RF601: 620FT; XIBRI: 3000FT

Path Terminator	Waypoint Identifier	Fly Over	Course °M(°T)	Magnetic Variation	Distance (NM)	Turn Direction	Altitude (ft)	Speed Limit (kt)	Navigation Specification
CA	-	-	159 (162.6)	-	-	-	+410	-	Conventional/RNAV1
CF	RF601	Y	159 (162.6)	3	-	-	+620	-220	Conventional/RNAV1
CF	XIBRI	-	187 (190.4)	3	-	-	+3000	-	Conventional/RNAV1

SOSIV 7Q

Path Terminator	Waypoint Identifier	Fly Over	Course °M(°T)	Magnetic Variation	Distance (NM)	Turn Direction	Altitude (ft)	Speed Limit (kt)	Navigation Specification
CA	-	-	159 (162.6)	-	-	-	+410	-	RNAV1
CF	RF601	Y	159 (162.6)	3	-	-	+620	-220	RNAV1
DF	RF603	Y	-	-	-	-	+2500	-	RNAV1
TF	RF711	-	297 (300.2)	-	19.4	-	+6000	-	RNAV1
TF	RF712	-	025 (028.2)	-	15.2	-	+FL110	-	RNAV1
TF	SOSIV	-	025 (028.2)	-	6.3	-	-	-	RNAV1

INITIAL CLIMB PROCEDURE RWY 16L**NENIG 8C (ATC discretion)**

After take-off maintain RWY heading until crossing RDL 098 OST VOR (MCA 510 ft) then turn right (IAS MAX 210 kt) on TR 309° to join RDL 278 OST VOR bound to NENIG.

MCA: INT RDL 098 OST: 510FT; NENIG: 4000FT

NENIG 7J

Path Terminator	Waypoint Identifier	Fly Over	Course °M(°T)	Magnetic Variation	Distance (NM)	Turn Direction	Altitude (ft)	Speed Limit (kt)	Navigation Specification
CA	-	-	159 (162.6)	-	-	-	+405	-	RNAV1
CF	RF602	Y	159 (162.6)	3	-	-	+510	-210	RNAV1
DF	RF603	Y	-	-	-	-	+2500	-	RNAV1
TF	RF711	-	297 (300.2)	-	19.4	-	-	-	RNAV1
TF	NENIG	-	278 (281.1)	-	10.1	-	+4000	-	RNAV1

SOSAK 9C

After take-off maintain RWY heading until crossing RDL 098 OST VOR (MCA 510 ft) then turn right (IAS MAX 210 kt) to join RDL 215 OST VOR bound to SOSAK.

MCA: RF602: 510FT; SOSAK: 3000FT

Path Terminator	Waypoint Identifier	Fly Over	Course °M(°T)	Magnetic Variation	Distance (NM)	Turn Direction	Altitude (ft)	Speed Limit (kt)	Navigation Specification
CA	-	-	159 (162.6)	-	-	-	+405	-	Conventional/RNAV1
CF	RF602	Y	159 (162.6)	3	-	-	+510	-210	Conventional/RNAV1
DF	RF603	Y	-	-	-	-	-	-	Conventional/RNAV1
CF	SOSAK	-	215 (218.4)	3	-	-	+3000	-	Conventional/RNAV1

SOSIV 7C (ATC DISCRETION)

Path Terminator	Waypoint Identifier	Fly Over	Course °M(°T)	Magnetic Variation	Distance (NM)	Turn Direction	Altitude (ft)	Speed Limit (kt)	Navigation Specification
CA	-	-	159 (162.6)	-	-	-	+405	-	RNAV1
CF	RF602	Y	159 (162.6)	3	-	-	+510	210	RNAV1
CF	RF812	-	309 (312.3)	3	-	-	-	-	RNAV1
TF	RF707	-	353 (355.8)	-	6.3	-	+6000	-	RNAV1
TF	RF708	-	353 (355.8)	-	7.3	-	+FL110	-	RNAV1
TF	SOSIV	-	353 (355.8)	-	6.3	-	-	-	RNAV1

SOSIV 8J

Path Terminator	Waypoint Identifier	Fly Over	Course °M(°T)	Magnetic Variation	Distance (NM)	Turn Direction	Altitude (ft)	Speed Limit (kt)	Navigation Specification
CA	-	-	159 (162.6)	-	-	-	+405	-	RNAV1
CF	RF602	Y	159 (162.6)	3	-	-	+510	-210	RNAV1
DF	RF603	Y	-	-	-	-	+2500	-	RNAV1
DF	RF812	-	-	-	-	-	-	-	RNAV1
TF	RF707	-	353 (355.8)	-	6.3	-	+6000	-	RNAV1
TF	RF708	-	353 (355.8)	-	7.3	-	+FL110	-	RNAV1
TF	SOSIV	-	353 (355.8)	-	6.3	-	-	-	RNAV1

XENOL 7C (ATC discretion)

After take-off maintain RWY heading until crossing RDL 098 OST VOR (MCA 510ft) then turn right (IAS MAX 210 kt) on TR299° to join RDL 261 OST VOR until 20NM OST DME then proceed on TR273° bound to XENOL.

MCA: INT RDL 098 OST VOR: 510FT; XENOL; 4000FT

XENOL 7J

Path Terminator	Waypoint Identifier	Fly Over	Course °M(°T)	Magnetic Variation	Distance (NM)	Turn Direction	Altitude (ft)	Speed Limit (kt)	Navigation Specification
CA	-	-	159 (162.6)	-	-	-	+405	-	RNAV1
CF	RF602	Y	159 (162.6)	3	-	-	+510	-210	RNAV1
DF	RF603	Y	-	-	-	-	+2500	-	RNAV1
TF	RF709	-	279 (281.2)	-	18.1	-	-	-	RNAV1
TF	XENOL	-	273 (276.2)	-	11.0	-	+4000	-	RNAV1

XIBRI 8C

After take-off maintain RWY heading until crossing RDL 098 OST VOR (MCA 510 ft) then turn right (IAS MAX 210 kt) to join RDL 187 OST VOR bound to XIBRI

MCA: RF602 510FT; XIBRI 3000FT

Path Terminator	Waypoint Identifier	Fly Over	Course °M(°T)	Magnetic Variation	Distance (NM)	Turn Direction	Altitude (ft)	Speed Limit (kt)	Navigation Specification
CA	-	-	159 (162.6)	-	-	-	+405	-	Conventional/RNAV1
CF	RF602	Y	159 (162.6)	3	-	-	+510	210	Conventional/RNAV1
CF	XIBRI	-	187 (190.4)	3	-	-	+3000	-	Conventional/RNAV1

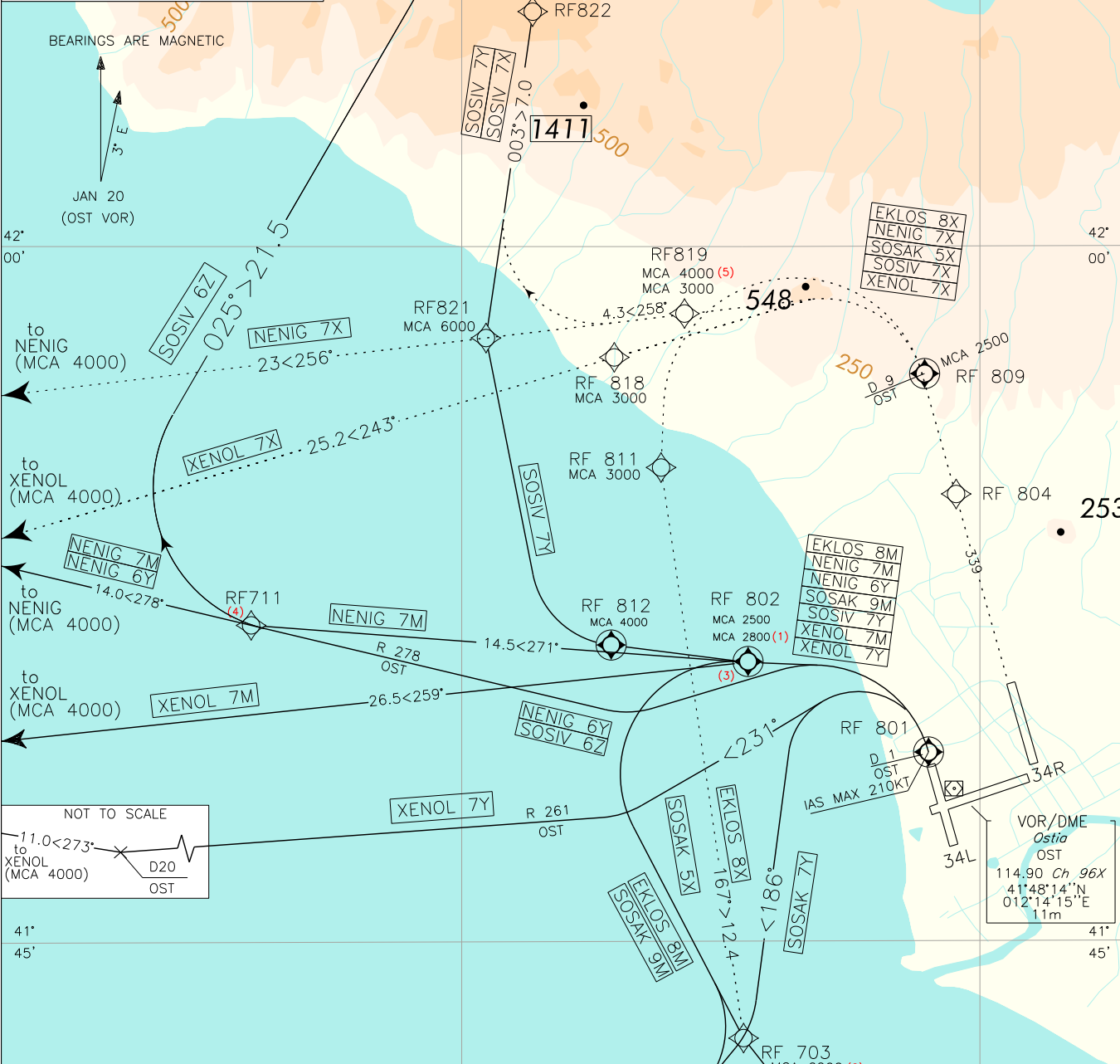
WAYPOINT LIST

Waypoint Identifier	Coordinates
RF601	41°46'15.7N 012°14'42.0E
RF602	41°47'50.8N 012°16'54.5E
RF603	41°42'19.2N 012°11'14.3E
RF707	41°57'25.4N 012°03'40.6E
RF708	42°04'42.2N 012°02'57.8E
RF709	41°46'05.8N 011°47'44.5E
RF711	41°52'03.4N 011°48'47.6E
RF712	42°05'26.0N 011°58'21.1E
RF812	41°51'08.8N 012°04'17.3E

FREQUENCIES	
TWR Fiume TWR	118.700 (127.625)
APP Roma Departure	130.900 (131.100)
ATIS Fiume Departure Information	121.850

INITIAL CLIMB PROCEDURES	RWY 34 R	ROMA/FIUMICINO
	34 L	TRANSITION ALT 6000

CHANGE: MAGNETIC DECLINATION UPDATED; REMARKS UPDATED



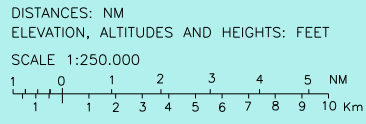
NOT TO SCALE

to XENOL (MCA 4000) $11.0 < 273^\circ$ D20 OST

- REMARKS**
- (1) For EKLOS 8M, SOSAK 9M, XENOL 7M only
 - (2) For ICP bound to EKLOS only
 - (3) RF802 fly-by Waypoint for:
NENIG 7M - XENOL 7M
 - (4) MCA 6000FT for SOSIV 6Z only
MCA 3000FT for NENIG 7M only
 - (5) MCA 4000ft for SOSIV 7X only

LEGEND

ICP RWY 34 L	—————
ICP RWY 34 R



NOISE ABATEMENT PROCEDURES

- 1) Departure track include Noise Abatement routing.
- 2) Apply noise abatement technique.
- 3) Pilots shall adopt a minimum climb gradient in accordance with ICAO-Annex 6 provisions for a safe obstacles overflying. Such climb gradient shall be maintained in any foreseeable circumstance.

INITIAL CLIMB PROCEDURE RWY 34L

IAS MAX during turn over 1NM OST 210 KT

Warning: "Close in " obstacles penetrating OIS 2.5% exist, but they were not considered for the published procedure design gradient

EKLOS 8M

Path Terminator	Waypoint Identifier	Fly Over	Course °M(°T)	Magnetic Variation	Distance (NM)	Turn Direction	Altitude (ft)	Speed Limit (kt)	Navigation Specification
CA	-	-	339 (342.6)	-	-	-	+410 FT	-	RNAV1
CF	RF801	Y	339 (342.6)	3	-	-	+410 FT	-210	RNAV1
DF	RF802	Y	-	-	-	-	+2800 FT	-230	RNAV1
DF	RF703	-	-	-	-	-	+6000 FT	-	RNAV1
TF	EKLOS	-	137 (139.7)	-	11.0	-	+FL80	-	RNAV1

NENIG 7M

Path Terminator	Waypoint Identifier	Fly Over	Course °M(°T)	Magnetic Variation	Distance (NM)	Turn Direction	Altitude (ft)	Speed Limit (kt)	Navigation Specification
CA	-	-	339 (342.6)	-	-	-	+410 FT	-	RNAV1
CF	RF801	Y	339 (342.6)	3	-	-	+410 FT	-210	RNAV1
DF	RF802	-	-	-	-	-	+2500 FT	-	RNAV1
TF	RF711	-	271 (274.6)	-	14.5	-	+3000 FT	-	RNAV1
TF	NENIG	-	278 (281.1)	-	14.0	-	+4000 FT	-	RNAV1

NENIG 6Y

After take-off maintain RWY heading until 1NM OST DME (MCA 410 FT) then turn left (IAS MAX 210KT) to join RDL 278 OST VOR bound to NENIG.

MCA: NENIG 4000FT

SOSAK 7Y

After take-off maintain RWY heading until 1NM OST DME (MCA 410 FT) then turn left (IAS MAX 210KT) on TR 186° to join RDL 215 OST VOR bound to SOSAK.

MCA: SOSAK 3000FT

SOSAK 9M

Path Terminator	Waypoint Identifier	Fly Over	Course °M(°T)	Magnetic Variation	Distance (NM)	Turn Direction	Altitude (ft)	Speed Limit (kt)	Navigation Specification
CA	-	-	339 (342.6)	-	-	-	+410 FT	-	RNAV1
CF	RF801	Y	339 (342.6)	3	-	-	+410 FT	-210	RNAV1
DF	RF802	Y	-	-	-	-	+2800 FT	-230	RNAV1
DF	RF703	-	-	-	-	-	-	-	RNAV1
TF	SOSAK	-	215 (218.3)	-	7.0	-	+3000 FT	-	RNAV1

SOSIV 7Y

Path Terminator	Waypoint Identifier	Fly Over	Course °M(°T)	Magnetic Variation	Distance (NM)	Turn Direction	Altitude (ft)	Speed Limit (kt)	Navigation Specification
CA	-	-	339 (342.6)	-	-	-	+410 FT	-	RNAV1
CF	RF801	Y	339 (342.6)	3	-	-	+410 FT	-210	RNAV1
DF	RF812	Y	-	-	-	-	+4000 FT	-	RNAV1
DF	RF821	-	-	-	-	-	+6000 FT	-	RNAV1
TF	RF822	-	003 (006.2)	-	7.0	-	-	-	RNAV1
TF	SOSIV	-	003 (006.3)	-	6.4	-	+FL110	-	RNAV1

XENOL 7M

Path Terminator	Waypoint Identifier	Fly Over	Course °M(°T)	Magnetic Variation	Distance (NM)	Turn Direction	Altitude (ft)	Speed Limit (kt)	Navigation Specification
CA	-	-	339 (342.6)	-	-	-	+410 FT	-	RNAV1
CF	RF801	Y	339 (342.6)	3	-	-	+410 FT	-210	RNAV1
DF	RF802	-	-	-	-	-	+2800 FT	-	RNAV1
TF	XENOL	-	259 (262.1)	-	26.5	-	+4000 FT	-	RNAV1

XENOL 7Y

After take-off maintain RWY heading until 1NM OST DME (MCA 410 FT) then turn left (IAS MAX 210KT) on TR 231° to join RDL 261 OST VOR until D20 OST DME then proceed on TR 273° bound to XENOL.

MCA: XENOL 4000FT

SOSIV 6Z

Path Terminator	Waypoint Identifier	Fly Over	Course °M(°T)	Magnetic Variation	Distance (NM)	Turn Direction	Altitude (ft)	Speed Limit (kt)	Navigation Specification
CA	-	-	339 (342.6)	-	-	-	+410 FT	-	RNAV1
CF	RF801	Y	339 (342.6)	3	-	-	+410 FT	-210	RNAV1
CF	RF711	Y	278 (281.2)	3	-	-	+6000 FT	-	RNAV1
CF	RF712		025 (028.2)	3	-	-	+FL110	-	RNAV1
TF	SOSIV	-	025 (028.2)	-	6.3	-	-	-	RNAV1

INITIAL CLIMB PROCEDURE RWY 34R

Minimum climb gradient required for ATC reasons: 425 ft/NM (7%) until 3000 ft. Pilots unable to comply with this gradient shall advise ATC as soon as possible and require an amended clearance and/or a suitable RWY for take-off

Warning: "Close in " obstacles penetrating OIS 2.5% exist, but they were not considered for the published procedure design gradient

EKLOS 8X

Path Terminator	Waypoint Identifier	Fly Over	Course °M(°T)	Magnetic Variation	Distance (NM)	Turn Direction	Altitude (ft)	Speed Limit (kt)	Navigation Specification
CA	-	-	339 (342.6)	-	-	-	+413 FT	-	RNAV1
CF	RF804	-	339 (342.6)	3	-	-	-	-	RNAV1
CF	RF809	Y	339 (342.3)	3	-	-	+2500 FT	-230	RNAV1
DF	RF811	-	-	-	-	-	+3000 FT	-	RNAV1
TF	RF703	-	167 (169.9)	-	12.4	-	+6000 FT	-	RNAV1
TF	EKLOS	-	137 (139.7)	-	11.0	-	+FL80	-	RNAV1

NENIG 7X

Path Terminator	Waypoint Identifier	Fly Over	Course °M(°T)	Magnetic Variation	Distance (NM)	Turn Direction	Altitude (ft)	Speed Limit (kt)	Navigation Specification
CA	-	-	339 (342.6)	-	-	-	+413 FT	-	RNAV1
CF	RF804	-	339 (342.6)	3	-	-	-	-	RNAV1
CF	RF809	Y	339 (342.3)	3	-	-	+2500 FT	-220	RNAV1
DF	RF819	-	-	-	-	-	+3000 FT	-	RNAV1
TF	NENIG	-	256 (259.1)	-	27.3	-	+4000 FT	-	RNAV1

SOSAK 5X

Path Terminator	Waypoint Identifier	Fly Over	Course °M(°T)	Magnetic Variation	Distance (NM)	Turn Direction	Altitude (ft)	Speed Limit (kt)	Navigation Specification
CA	-	-	339 (342.6)	-	-	-	+413 FT	-	RNAV1
CF	RF804	-	339 (342.6)	3	-	-	-	-	RNAV1
CF	RF809	Y	339 (342.3)	3	-	-	+2500 FT	-230	RNAV1
DF	RF811	-	-	-	-	-	+3000 FT	-	RNAV1
TF	RF703	-	167 (169.9)	-	12.4	-	-	-	RNAV1
TF	SOSAK	-	215 (218.3)	-	7.0	-	-	-	RNAV1

SOSIV 7X

Path Terminator	Waypoint Identifier	Fly Over	Course °M(°T)	Magnetic Variation	Distance (NM)	Turn Direction	Altitude (ft)	Speed Limit (kt)	Navigation Specification
CA	-	-	339 (342.6)	-	-	-	+413 FT	-	RNAV1
CF	RF804	-	339 (342.6)	3	-	-	-	-	RNAV1
CF	RF809	Y	339 (342.3)	3	-	-	+2500 FT	-210	RNAV1
DF	RF819	-	-	-	-	-	+4000 FT	-	RNAV1
TF	RF821	-	258 (261.2)	-	4.3	-	+6000 FT	-210	RNAV1
TF	RF822	-	003 (006.2)	-	7.0	-	-	-	RNAV1
TF	SOSIV	-	003 (006.3)	-	6.4	-	+FL110	-	RNAV1

XENOL 7X

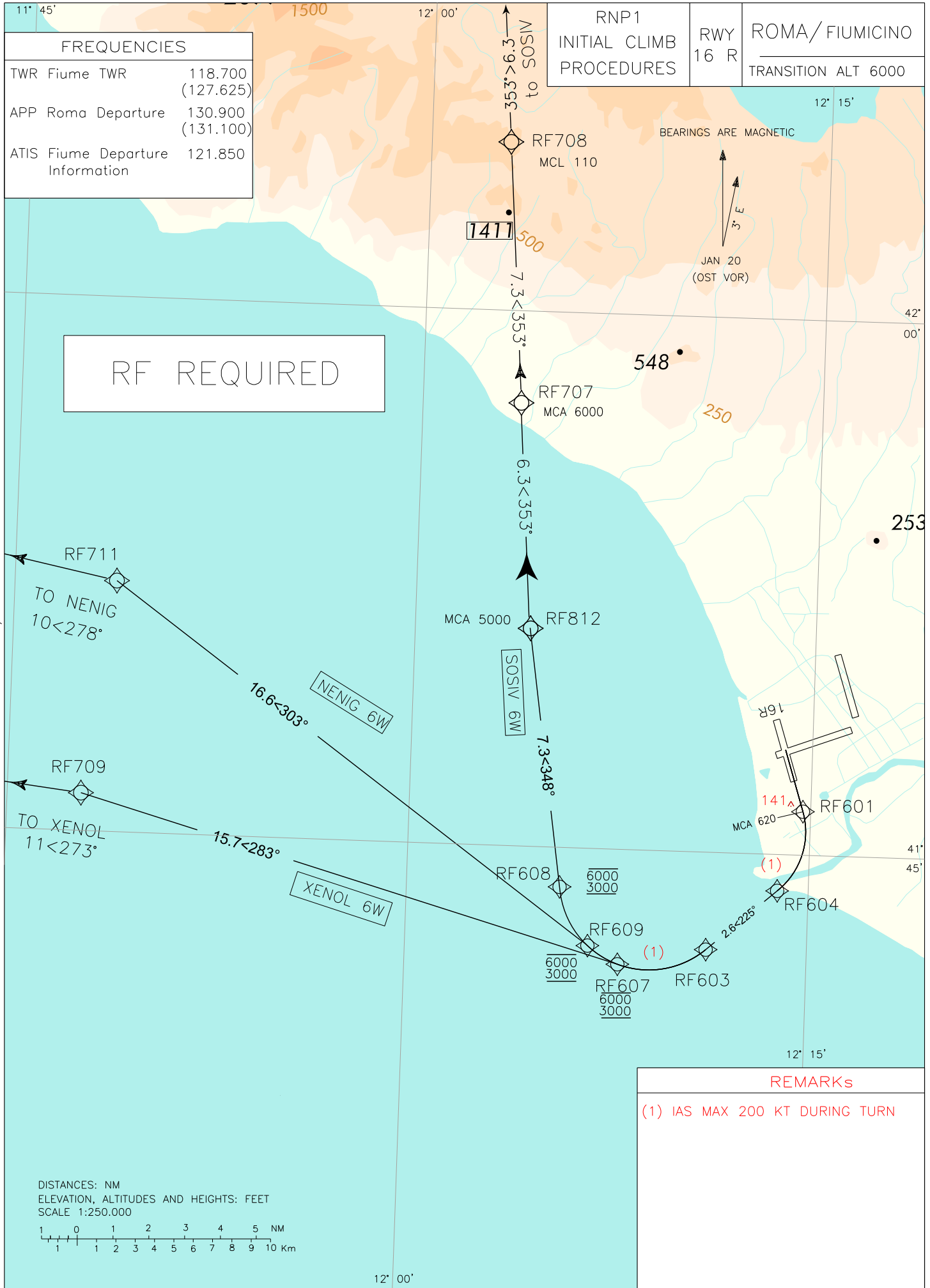
Path Terminator	Waypoint Identifier	Fly Over	Course °M(°T)	Magnetic Variation	Distance (NM)	Turn Direction	Altitude (ft)	Speed Limit (kt)	Navigation Specification
CA	-	-	339 (342.6)	-	-	-	+413 FT	-	RNAV1
CF	RF804	-	339 (342.6)	3	-	-	-	-	RNAV1
CF	RF809	Y	339 (342.3)	3	-	-	+2500 FT	-240	RNAV1
DF	RF818	-	-	-	-	-	+3000 FT	-	RNAV1
TF	XENOL	-	243 (246.3)	-	25.2	-	+4000 FT-	-	RNAV1

WAYPOINT LIST

Waypoint Identifier	Coordinates
RF703	41°42'47.4N 012°08'28.4E
RF711	41°52'03.4N 011°48'47.6E
RF712	42°05'26.0N 011°58'21.1E
RF801	41°49'04.4N 012°13'31.3E
RF802	41°50'52.3N 012°08'13.1E
RF804	41°54'38.5N 012°14'04.6E
RF809	41°57'11.3N 012°12'59.4E
RF811	41°55'00.0N 012°05'33.0E
RF812	41°51'08.8N 012°04'17.3E
RF818	41°57'20.1N 012°04'05.7E
RF819	41°58'18.7N 012°06'04.6E
RF821	41°57'39.3N 012°00'22.7E
RF822	42°04'39.8N 012°01'24.3E

Intenzionalmente bianca

Intentionally left blank



CHANGE: MAGNETIC DECLINATION UPDATED, GEOGRAPHICAL GRID REVISED

INITIAL CLIMB PROCEDURE RNP1 with RF functionality RWY 16R

NENIG 6W

Path Terminator	Waypoint Name	Fly Over	Course °Mag (°T)	Magnetic Variation	Distance (NM)	Turn Direction	Altitude Constraint	Speed Limit (IAS)	Navigation Performance
CA	-	-	159° (162.6°)	3°	-	-	+410	-	RNP1
CF	RF601	-	159° (162.6°)	3°	-	-	+620	-200	RNP1
RF centre: RF620 r=2.1NM	RF604	-	-	-	2.5	R	-	-200	RNP1
TF	RF603	-	225° (228.7°)	-	2.6	-	-	-200	RNP1
RF centre: RF606 r= 2.5NM	RF609	-	-	-	3.6	R	-6000 +3000	-200	RNP1
TF	RF711	-	303° (305.9°)	-	16.7	-	-	-200	RNP1
TF	NENIG	-	278° (281.2°)	-	10.0	-	-	-	RNP1

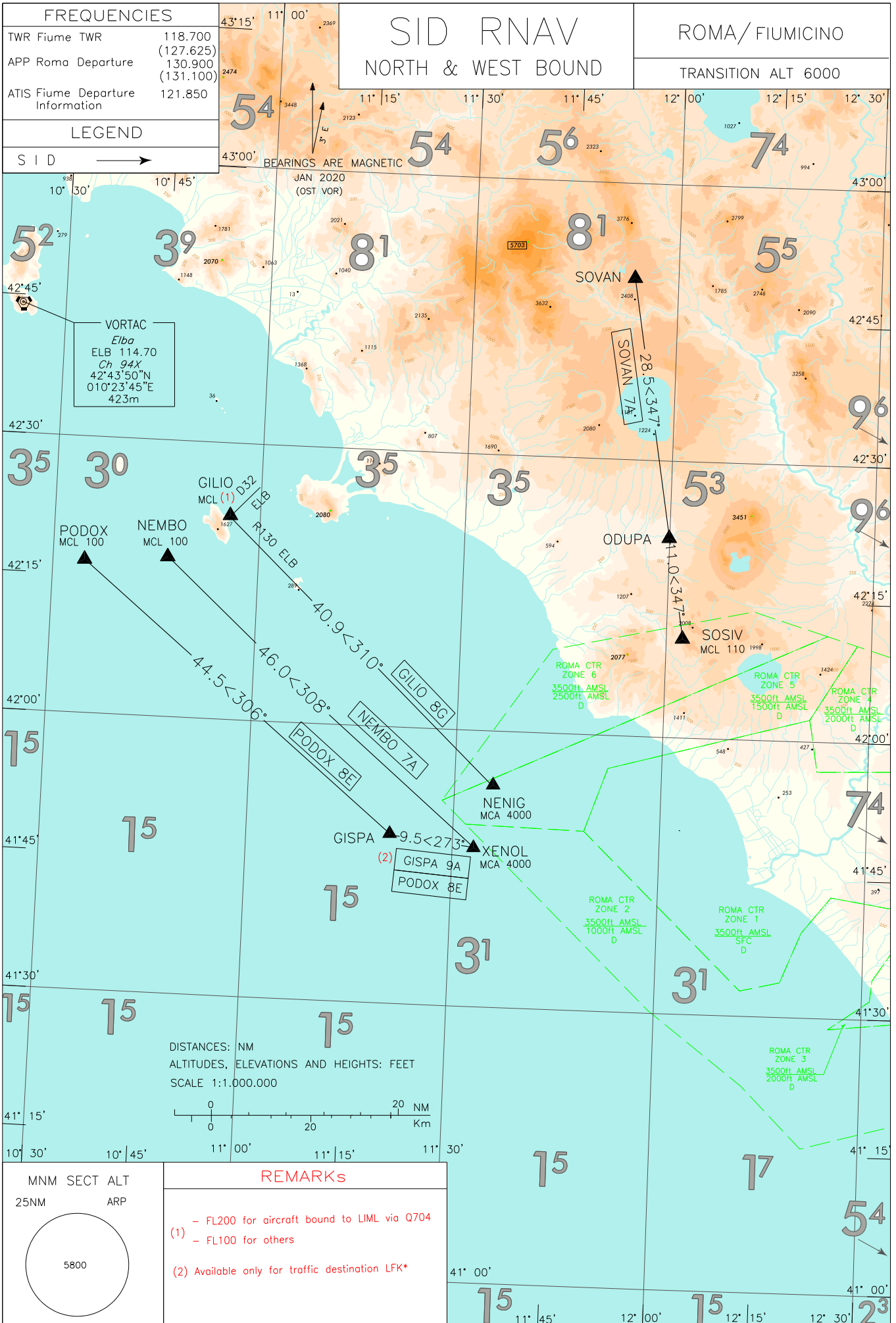
SOSIV 6W

Path Terminator	Waypoint Name	Fly Over	Course °Mag (°T)	Magnetic Variation	Distance (NM)	Turn Direction	Altitude Constraint	Speed Limit (IAS)	Navigation Performance
CA	-	-	159° (162.6°)	3°	-	-	+410	-	RNP1
CF	RF601	-	159° (162.6°)	3°	-	-	+620	-200	RNP1
RF centre: RF620 r=2.1NM	RF604	-	-	-	2.5	R	-	-200	RNP1
TF	RF603	-	225° (228.7°)	-	2.6	-	-	-200	RNP1
RF centre: RF606 r=2.5NM	RF608	-	-	-	5.5	R	-6000 +3000	-200	RNP1
TF	RF812	-	348° (351.6°)	-	7.3	-	+5000	-200	RNP1
TF	RF707	-	353° (355.8°)	-	6.3	-	+6000	-	RNP1
TF	RF708	-	353° (355.8°)	-	7.3	-	+FL110	-	RNP1
TF	SOSIV	-	353° (355.8°)	-	6.3	-	-	-	RNP1

XENOL 6W

Path Terminator	Waypoint Name	Fly Over	Course °Mag (°T)	Magnetic Variation	Distance (NM)	Turn Direction	Altitude Constraint	Speed Limit (IAS)	Navigation Performance
CA	-	-	159° (162.6°)	3°	-	-	+410	-	RNP1
CF	RF601	-	159° (162.6°)	3°	-	-	+620	-200	RNP1
RF centre: RF620 r=2.1NM	RF604	-	-	-	2.5	R	-	-200	RNP1
TF	RF603	-	225° (228.7°)	-	2.6	-	-	-200	RNP1
RF centre: RF606 r=2.5NM	RF607	-	-	-	2.6	R	-6000 +3000	-200	RNP1
TF	RF709	-	283° (285.8°)	-	15.7	-	-	-200	RNP1
TF	XENOL	-	273° (276.4°)	-	11.0	-	-	-	RNP1

Waypoint Identifier	Coordinates
RF601	41°46'15.68"N 012°14'42.00"E
RF603	41°42'19.24"N 012°11'14.30"E
RF604	41°44'01.66"N 012°13'49.99"E
RF607	41°41'49.84"N 012°07'57.93"E
RF608	41°43'56.33"N 012°05'42.89"E
RF609	41°42'19.44"N 012°06'49.63"E
RF707	41°57'25.40"N 012°03'40.60"E
RF708	42°04'42.22"N 012°02'57.76"E
RF709	41°46'05.80"N 011°47'44.47"E
RF711	41°52'03.44"N 011°48'47.61"E
RF812	41°51'08.83"N 012°04'17.30"E
RF arc centre Identifier	Coordinates
RF620	41°45'37.91"N 012°12'01.36"E
RF606	41°44'12.00"N 012°09'02.12"E



Initial climb procedure executed:

SID DESCRIPTION**GILIO 8G**

Proceed on TR 310° (RDL 130 ELB VOR) bound to GILIO

MCA/MCL: NENIG: 4000FT; GILIO (*)

Path Terminator	Waypoint Identifier	Fly Over	Course °M(°T)	Magnetic Variation	Distance (NM)	Turn Direction	Altitude (ft)	Speed Limit (kt)	Navigation Specification
IF	NENIG	-	-	-	-	-	+4000	-	Conventional/RNAV1
TF	GILIO	-	310 (313.0)	-	40.9	-	(*)	-	Conventional/RNAV1

(*) FL200 for aircraft bound to LIML via Q704/ FL100 for others

GISPA 9A (Available only for traffic destination LFK*)

Path Terminator	Waypoint Identifier	Fly Over	Course °M(°T)	Magnetic Variation	Distance (NM)	Turn Direction	Altitude (ft)	Speed Limit (kt)	Navigation Specification
IF	XENOL	-	-	-	-	-	+4000	-	RNAV1
TF	GISPA	-	273 (276.1)	-	9.5	-	-	-	RNAV1

NEMBO 7A

Path Terminator	Waypoint Identifier	Fly Over	Course °M(°T)	Magnetic Variation	Distance (NM)	Turn Direction	Altitude (ft)	Speed Limit (kt)	Navigation Specification
IF	XENOL	-	-	-	-	-	+4000	-	RNAV1
TF	NEMBO	-	308 (310.8)	-	46.0	-	+FL100	-	RNAV1

PODOX 8E

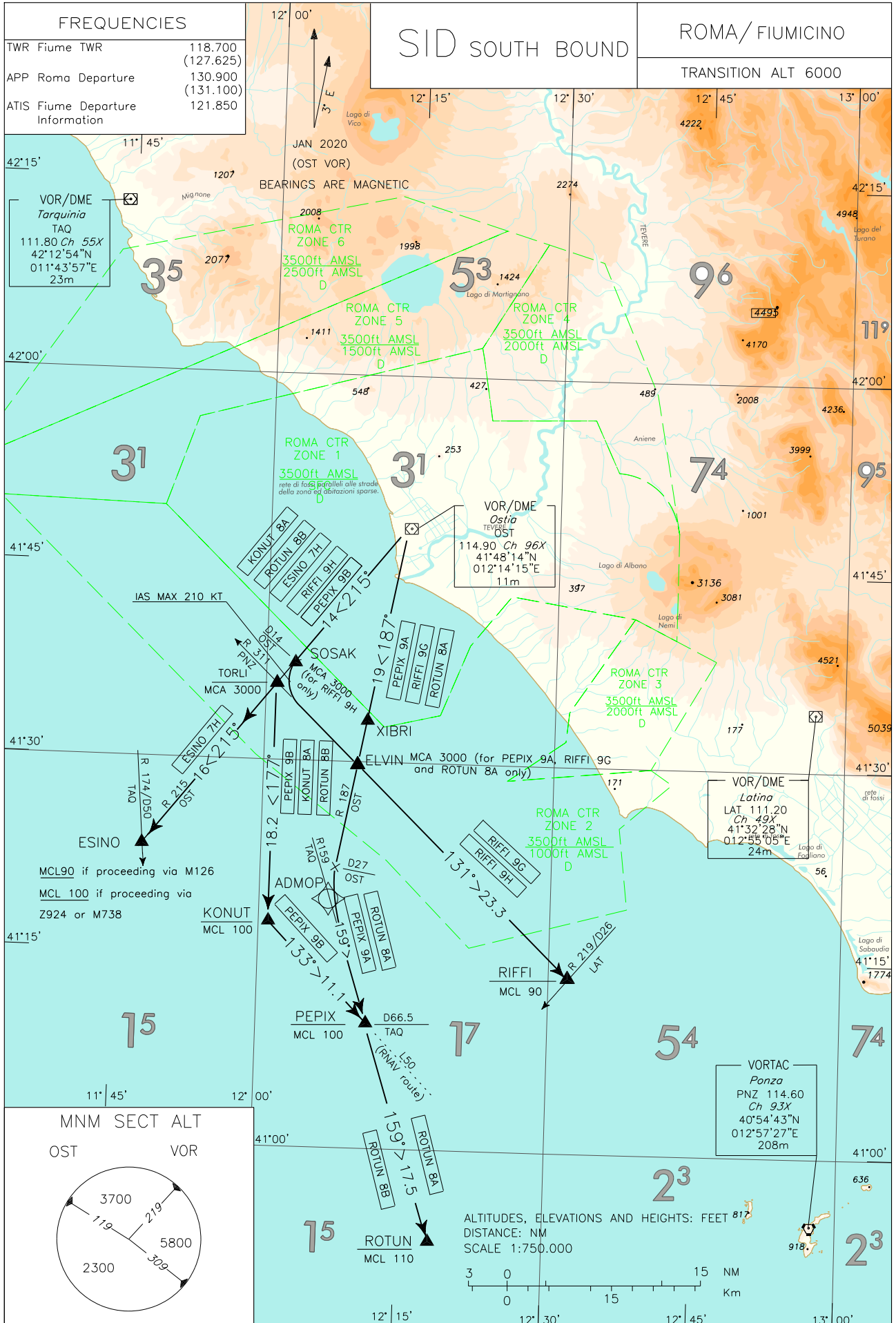
Path Terminator	Waypoint Identifier	Fly Over	Course °M(°T)	Magnetic Variation	Distance (NM)	Turn Direction	Altitude (ft)	Speed Limit (kt)	Navigation Specification
IF	XENOL	-	-	-	-	-	+4000	-	RNAV1
TF	GISPA	-	273 (276.1)	-	9.5	-	-	-	RNAV1
TF	PODOX	-	306 (309.3)	-	44.5	-	+FL100	-	RNAV1

SOVAN 7A

Path Terminator	Waypoint Identifier	Fly Over	Course °M(°T)	Magnetic Variation	Distance (NM)	Turn Direction	Altitude (ft)	Speed Limit (kt)	Navigation Specification
IF	SOSIV	-	-	-	-	-	+FL110	-	RNAV1
TF	ODUPA	-	347 (350.5)	-	11.0	-	-	-	RNAV1
TF	SOVAN	-	347 (350.5)	-	28.5	-	-	-	RNAV1

Intenzionalmente bianca

Intentionally left blank



CHANGE: MAGNETIC DECLINATION UPDATED

SID DESCRIPTION

ESINO 7H

Proceed via SOSAK (RDL 215 OST VOR) – TORLI – ESINO.

MCA/MCL: TORLI 3000 FT; ESINO FL 90 (if proceeding via M126), FL 100 (if proceeding via Z924 or M738)

Path Terminator	Waypoint Identifier	Fly Over	Course °M(°T)	Magnetic Variation	Distance (NM)	Turn Direction	Altitude (ft)	Speed Limit (kt)	Navigation Specification
IF	SOSAK	-	-	-	-	-	-	-	Conventional/ RNAV1
TF	TORLI	-	215 (218.3)	-	1.9	-	+3000	-	Conventional/ RNAV1
TF	ESINO	-	215 (218.3)	-	16.0	-	(*)	-	Conventional/ RNAV1

(*) FL90 if proceeding via M126; FL100 if proceeding via Z924 or M738

KONUT 8A

Proceed via SOSAK - TORLI, then turn left on TR 177° bound to KONUT.

MCA/MCL: TORLI 3000 FT; KONUT FL 100

Path Terminator	Waypoint Identifier	Fly Over	Course °M(°T)	Magnetic Variation	Distance (NM)	Turn Direction	Altitude (ft)	Speed Limit (kt)	Navigation Specification
IF	SOSAK	-	-	-	-	-	-	-	Conventional/ RNAV1
TF	TORLI	-	215 (218.3)	-	1.9	-	+3000	-	Conventional/ RNAV1
TF	KONUT	-	177 (180.3)	-	18.2	-	+FL100	-	Conventional/ RNAV1

PEPIX 9A

Proceed via XIBRI – ELVIN (RDL 187 OST VOR) until 27 NM OST DME, then turn left until joining RDL 159 TAQ VOR bound to PEPIX.

MCA/MCL: ELVIN 3000 FT; PEPIX FL 100

Path Terminator	Waypoint Identifier	Fly Over	Course °M(°T)	Magnetic Variation	Distance (NM)	Turn Direction	Altitude (ft)	Speed Limit (kt)	Navigation Specification
IF	XIBRI	-	-	-	-	-	-	-	Conventional/ RNAV1
TF	ELVIN	-	187 (190.4)	-	3.9	-	+3000	-	Conventional/ RNAV1
TF	ADMOP	-	187 (190.4)	-	10.5	-	-	-	Conventional/ RNAV1
TF	PEPIX	-	159 (162.2)	-	10.2	-	+FL100	-	Conventional/ RNAV1

PEPIX 9B

Proceed via SOSAK (RDL 215 OST VOR) - TORLI then turn left on TR 177° to KONUT, then turn left to join and follow RNAV route L50 bound to PEPHX.

MCA/MCL: TORLI 3000 FT; KONUT FL 100

Path Terminator	Waypoint Identifier	Fly Over	Course °M(°T)	Magnetic Variation	Distance (NM)	Turn Direction	Altitude (ft)	Speed Limit (kt)	Navigation Specification
IF	SOSAK	-	-	-	-	-	-	-	Conventional/ RNAV1
TF	TORLI	-	215 (218.3)	-	1.9	-	+3000	-	Conventional/ RNAV1
TF	KONUT	-	177 (180.3)	-	18.2	-	+FL100	-	Conventional/ RNAV1
TF	PEPIX	-	133 (135.7)	-	11.1	-	+FL100	-	Conventional/ RNAV1

RIFFI 9G

Proceed via XIBRI (RDL 187 OST VOR) – ELVIN then turn left on TR 131° (RDL 311 PNZ VOR) bound to RIFFI.

MCA/MCL: ELVIN 3000 FT; RIFFI FL 90

Path Terminator	Waypoint Identifier	Fly Over	Course °M(°T)	Magnetic Variation	Distance (NM)	Turn Direction	Altitude (ft)	Speed Limit (kt)	Navigation Specification
IF	XIBRI	-	-	-	-	-	-	-	Conventional/ RNAV1
TF	ELVIN	-	187 (190.4)	-	3.9	-	+3000	-	Conventional/ RNAV1
TF	RIFFI	-	131 (134.0)	-	23.3	-	+FL90	-	Conventional/ RNAV1

RIFFI 9H

On SOSAK turn left (IAS MAX 210KT) on TR 131° (RDL 311 PNZ VOR) bound to RIFFI.

MCA/MCL: SOSAK 3000 FT; RIFFI FL 90

Path Terminator	Waypoint Identifier	Fly Over	Course °M(°T)	Magnetic Variation	Distance (NM)	Turn Direction	Altitude (ft)	Speed Limit (kt)	Navigation Specification
IF	SOSAK	-	-	-	-	-	+3000		Conventional/ RNAV1
TF	TORLI	-	215 (218.3)	-	1.9	-	-	-210	Conventional/ RNAV1
TF	RIFFI	-	131 (134.0)	-	32.2	-	+FL90	-	Conventional/ RNAV1

ROTUN 8A

Proceed via XIBRI – ELVIN (RDL 187 OST VOR) until 27 NM OST DME, then turn left until joining RDL 159 TAQ VOR bound to PEPIX then ROTUN.

MCA/MCL: ELVIN 3000 FT; PEPIX FL 100; ROTUN FL 110

Path Terminator	Waypoint Identifier	Fly Over	Course °M(°T)	Magnetic Variation	Distance (NM)	Turn Direction	Altitude (ft)	Speed Limit (kt)	Navigation Specification
IF	XIBRI	-	-	-	-	-	-	-	Conventional/ RNAV1
TF	ELVIN	-	187 (190.4)	-	3.9	-	+3000	-	Conventional/ RNAV1
TF	ADMOP	-	187 (190.4)	-	10.5	-	-	-	Conventional/ RNAV1
TF	PEPIX	-	159 (162.2)	-	10.2	-	+FL100	-	Conventional/ RNAV1
TF	ROTUN	-	159 (162.3)	-	17.5	-	+FL110	-	Conventional/ RNAV1

ROTUN 8B

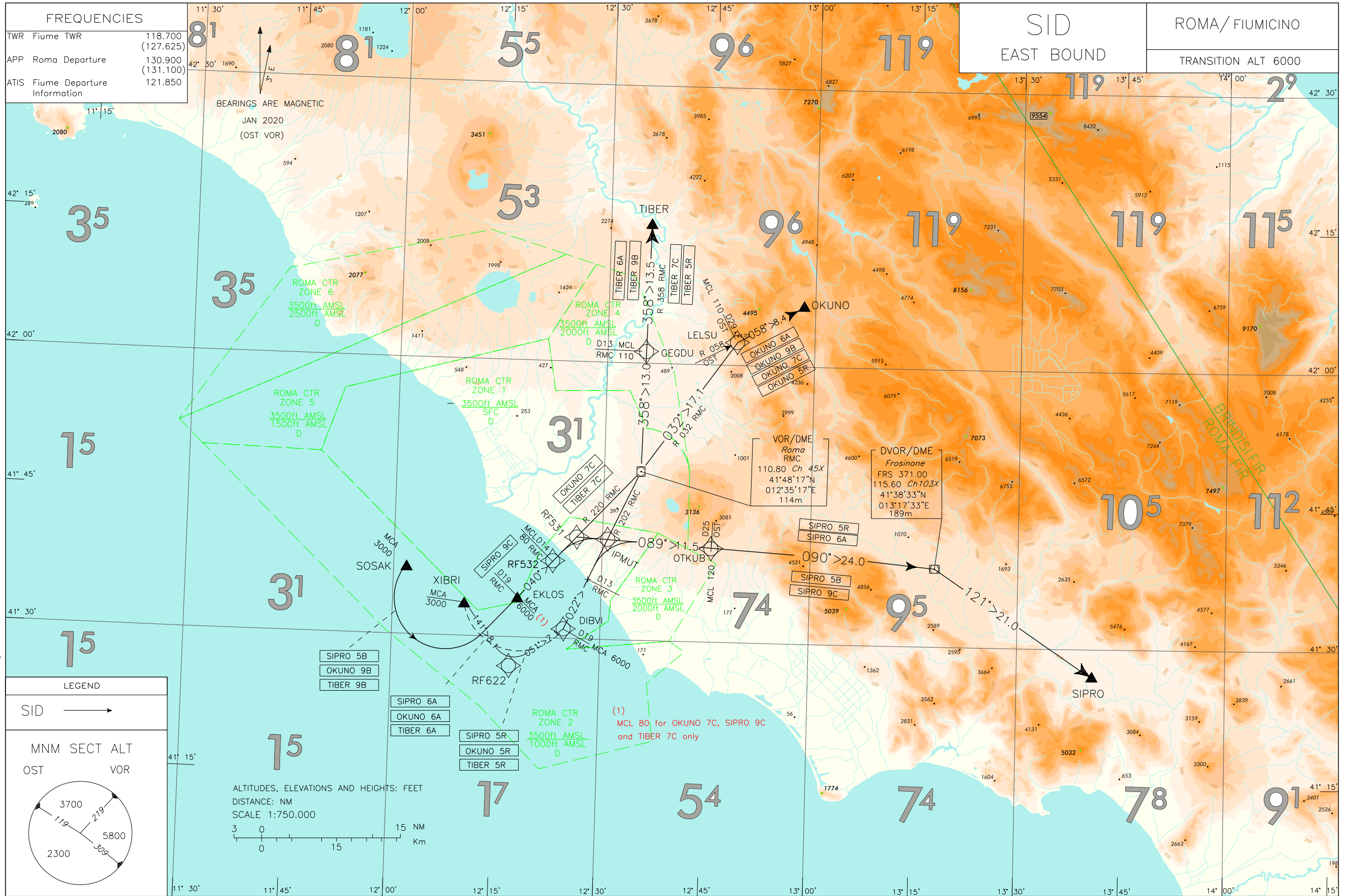
Proceed via SOSAK (RDL 215 OST VOR) - TORLI, then turn left on TR 177° to KONUT, then turn left to join and follow RNAV route L50 to PEPIX then turn right on TR 159° (RDL 159 TAQ VOR) bound to ROTUN.

MCA/MCL: TORLI 3000 FT; KONUT FL 100; ROTUN FL 110

Path Terminator	Waypoint Identifier	Fly Over	Course °M(°T)	Magnetic Variation	Distance (NM)	Turn Direction	Altitude (ft)	Speed Limit (kt)	Navigation Specification
IF	SOSAK	-	-	-	-	-	-	-	Conventional/ RNAV1
TF	TORLI	-	215 (218.3)	-	1.9	-	+3000	-	Conventional/ RNAV1
TF	KONUT	-	177 (180.3)	-	18.2	-	+FL100	-	Conventional/ RNAV1
TF	PEPIX	-	133 (135.7)	-	11.1	-	+FL100	-	Conventional/ RNAV1
TF	ROTUN	-	159 (162.3)	-	17.5	-	+FL110	-	Conventional/ RNAV1

Intenzionalmente bianca

Intentionally left blank



SID DESCRIPTION

OKUNO 6A (ATC DISCRETION)

Over XIBRI turn left until joining RDL 202 RMC VOR (TR 022°) bound to RMC VOR. Leave RMC VOR on RDL 032 (TR 032°) until joining RDL 058 OST VOR (TR 058°) bound to OKUNO.

MCA/MCL: XIBRI 3000 FT; DIBVI 6000 FT; LELSU FL 110

Path Terminator	Waypoint Identifier	Fly Over	Course °M(°T)	Magnetic Variation	Distance (NM)	Turn Direction	Altitude (ft)	Speed Limit (kt)	Navigation Specification
IF	XIBRI	Y	-	-	-	-	+3000	-	Conventional/RNAV1
DF	DIBVI	-	-	-	-	L	+6000	-	Conventional/RNAV1
TF	RMC	-	022 (025.0)	-	19.0	-	-	-	Conventional/RNAV1
TF	LELSU	-	032 (035.2)	-	17.1	-	+FL110	-	Conventional/RNAV1
TF	OKUNO	-	058 (061.0)	-	8.4	-	-	-	Conventional/RNAV1

OKUNO 5R

Path Terminator	Waypoint Identifier	Fly Over	Course °M(°T)	Magnetic Variation	Distance (NM)	Turn Direction	Altitude (ft)	Speed Limit (kt)	Navigation Specification
IF	XIBRI	-	-	-	-	-	+3000	-	RNAV1
TF	RF622	-	141 (144.0)	-	8.1	-	-	-	RNAV1
TF	DIBVI	-	051 (053.9)	-	7.1	L	+6000	-	RNAV1
TF	RMC	-	022 (025.0)	-	19.0	-	-	-	RNAV1
TF	LELSU	-	032 (035.2)	-	17.1	-	+FL110	-	RNAV1
TF	OKUNO	-	058 (061.0)	-	8.4	-	-	-	RNAV1

OKUNO 9B

Over SOSAK turn left to join RDL 220 RMC VOR (TR 040°) to RMC VOR. Leave RMC VOR on RDL 032 (TR 032°) until joining RDL 058 OST VOR (TR 058°) bound to OKUNO.

MCA/MCL: SOSAK: 3000 FT; EKLOS: 6000 FT; RF532: FL 80; LELSU: FL 110

Path Terminator	Waypoint Identifier	Fly Over	Course °M(°T)	Magnetic Variation	Distance (NM)	Turn Direction	Altitude (ft)	Speed Limit (kt)	Navigation Specification
IF	SOSAK	Y	-	-	-	-	+3000	-	Conventional/RNAV1
DF	EKLOS	-	-	-	-	L	+6000	-	Conventional/RNAV1
TF	RF532	-	040 (043.0)	-	5.0	-	+FL80	-	Conventional/RNAV1
TF	RMC	-	040 (043.0)	-	14.0	-	-	-	Conventional/RNAV1
TF	LELSU	-	032 (035.2)	-	17.1	-	+FL110	-	Conventional/RNAV1
TF	OKUNO	-	058 (061.0)	-	8.4	-	-	-	Conventional/RNAV1

OKUNO 7C

Over EKLOS proceed on RDL 220 RMC VOR (TR 040°) bound to RMC VOR. Leave RMC VOR on RDL 032 (TR 032°) until joining RDL 058 OST VOR (TR 058°) bound to OKUNO.

MCL: EKLOS FL 80; LELSU FL 110

Path Terminator	Waypoint Identifier	Fly Over	Course °M(°T)	Magnetic Variation	Distance (NM)	Turn Direction	Altitude (ft)	Speed Limit (kt)	Navigation Specification
IF	EKLOS	-	-	-	-	-	+FL80	-	Conventional/ RNAV1
TF	RMC	-	040 (043.0)	-	19.0	-	-	-	Conventional/ RNAV1
TF	LELSU	-	032 (035.2)	-	17.1	-	+FL110	-	Conventional/ RNAV1
TF	OKUNO	-	058 (061.0)	-	8.4	-	-	-	Conventional/ RNAV1

SIPRO 6A (ATC DISCRETION)

Path Terminator	Waypoint Identifier	Fly Over	Course °M(°T)	Magnetic Variation	Distance (NM)	Turn Direction	Altitude (ft)	Speed Limit (kt)	Navigation Specification
IF	XIBRI	Y	-	-	-	-	+3000	-	RNAV1
DF	DIBVI	-	-	-	-	L	+6000	-	RNAV1
TF	IPMUT	-	022 (024.9)	-	10.1	-	-	-	RNAV1
TF	OTKUB	-	089 (092.6)	-	11.5	-	+FL120	-	RNAV1
TF	FRS	-	090 (093.0)	-	24.0	-	-	-	RNAV1
TF	SIPRO	-	121 (124.1)	-	21.0	-	-	-	RNAV1

SIPRO 5R

Path Terminator	Waypoint Identifier	Fly Over	Course °M(°T)	Magnetic Variation	Distance (NM)	Turn Direction	Altitude (ft)	Speed Limit (kt)	Navigation Specification
IF	XIBRI	-	-	-	-	-	+3000	-	RNAV1
TF	RF622	-	141 (144.0)	-	8.1	-	-	-	RNAV1
TF	DIBVI	-	051 (053.9)	-	7.1	L	+6000	-	RNAV1
TF	IPMUT	-	022 (024.9)	-	10.1	-	-	-	RNAV1
TF	OTKUB	-	089 (092.6)	-	11.5	-	+FL120	-	RNAV1
TF	FRS	-	090 (093.0)	-	24.0	-	-	-	RNAV1
TF	SIPRO	-	121 (124.1)	-	21.0	-	-	-	RNAV1

SIPRO 5B

Path Terminator	Waypoint Identifier	Fly Over	Course °M(°T)	Magnetic Variation	Distance (NM)	Turn Direction	Altitude (ft)	Speed Limit (kt)	Navigation Specification
IF	SOSAK	Y	-	-	-	-	+3000	-	RNAV1
DF	EKLOS	-	-	-	-	L	+6000	-	RNAV1
TF	RF532	-	040 (043.0)	-	5.0	-	+FL80	-	RNAV1
TF	RF531	-	040 (043.0)	-	3.1	-	-	-	RNAV1
TF	OTKUB	-	089 (092.6)	-	15.2	-	+FL120	-	RNAV1
TF	FRS	-	090 (093.0)	-	24.0	-	-	-	RNAV1
TF	SIPRO	-	121 (124.1)	-	21.0	-	-	-	RNAV1

SIPRO 9C

Path Terminator	Waypoint Identifier	Fly Over	Course °M(°T)	Magnetic Variation	Distance (NM)	Turn Direction	Altitude (ft)	Speed Limit (kt)	Navigation Specification
IF	EKLOS	-	-	-	-	-	+FL80	-	RNAV1
TF	RF531	-	040 (043.0)	-	8.1	-	-	-	RNAV1
TF	OTKUB	-	089 (092.6)	-	15.2	-	+FL120	-	RNAV1
TF	FRS	-	090 (093.0)	-	24.0	-	-	-	RNAV1
TF	SIPRO	-	121 (124.1)	-	21.0	-	-	-	RNAV1

TIBER 6A (ATC DISCRETION)

Over XIBRI turn left until joining RDL 202 RMC VOR (TR 022°) bound to RMC VOR. Leave RMC VOR on RDL 358 (TR 358°) bound to TIBER.

MCA/MCL: XIBRI 3000 FT; DIBVI 6000 FT; GEGDU FL110

Path Terminator	Waypoint Identifier	Fly Over	Course °M(°T)	Magnetic Variation	Distance (NM)	Turn Direction	Altitude (ft)	Speed Limit (kt)	Navigation Specification
IF	XIBRI	Y	-	-	-	-	+3000	-	Conventional/ RNAV1
DF	DIBVI	-	-	-	-	L	+6000	-	Conventional/ RNAV1
TF	RMC	-	022 (025.0)	-	19.0	-	-	-	Conventional/ RNAV1
TF	GEGDU	-	358 (001.0)	-	13.0	-	+FL110	-	Conventional/ RNAV1
TF	TIBER	-	358 (001.0)	-	13.5	-	-	-	Conventional/ RNAV1

TIBER 9B

Over SOSAK turn left until joining RDL 220 RMC VOR (TR 040°) bound to RMC VOR. Leave RMC VOR on RDL 358 (TR 358°) bound to TIBER.

MCA/MCL: SOSAK: 3000 ft; EKLOS: 6000 ft; RF532: FL 80; GEGDU: FL110

Path Terminator	Waypoint Identifier	Fly Over	Course °M(°T)	Magnetic Variation	Distance (NM)	Turn Direction	Altitude (ft)	Speed Limit (kt)	Navigation Specification
IF	SOSAK	Y	-	-	-	-	+3000	-	Conventional/ RNAV1
DF	EKLOS	-	-	-	-	L	+6000	-	Conventional/ RNAV1
TF	RF532	-	040 (043.0)	-	5.0	-	+FL80	-	Conventional/ RNAV1
TF	RMC	-	040 (043.0)	-	14.0	-	-	-	Conventional/ RNAV1
TF	GEGDU	-	358 (001.0)	-	13.0	-	+FL110	-	Conventional/ RNAV1
TF	TIBER	-	358 (001.0)	-	13.5	-	-	-	Conventional/ RNAV1

TIBER 7C

Over EKLOS proceed on RDL 220 RMC VOR (TR 040°) bound to RMC VOR. Leave RMC VOR on RDL 358 (TR 358°) bound to TIBER.

MCL: EKLOS FL 80; GEGDU: FL110

Path Terminator	Waypoint Identifier	Fly Over	Course °M(°T)	Magnetic Variation	Distance (NM)	Turn Direction	Altitude (ft)	Speed Limit (kt)	Navigation Specification
IF	EKLOS	-	-	-	-	-	+FL80	-	Conventional/ RNAV1
TF	RMC	-	040 (043.0)	-	19.0	-	-	-	Conventional/ RNAV1
TF	GEGDU	-	358 (001.0)	-	13.0	-	+FL110	-	Conventional/ RNAV1
TF	TIBER	-	358 (001.1)	-	13.5	-	-	-	Conventional/ RNAV1

TIBER 5R

Path Terminator	Waypoint Identifier	Fly Over	Course °M(°T)	Magnetic Variation	Distance (NM)	Turn Direction	Altitude (ft)	Speed Limit (kt)	Navigation Specification
IF	XIBRI	-	-	-	-	-	+3000	-	RNAV1
TF	RF622	-	141 (144.0)	-	8.1	-	-	-	RNAV1
TF	DIBVI	-	051 (053.9)	-	7.1	L	+6000	-	RNAV1
TF	RMC	-	022 (025.0)	-	19.0	-	-	-	RNAV1
TF	GEGDU	-	358 (001.0)	-	13.0	-	+FL110	-	RNAV1
TF	TIBER	-	358 (001.0)	-	13.5	-	-	-	RNAV1

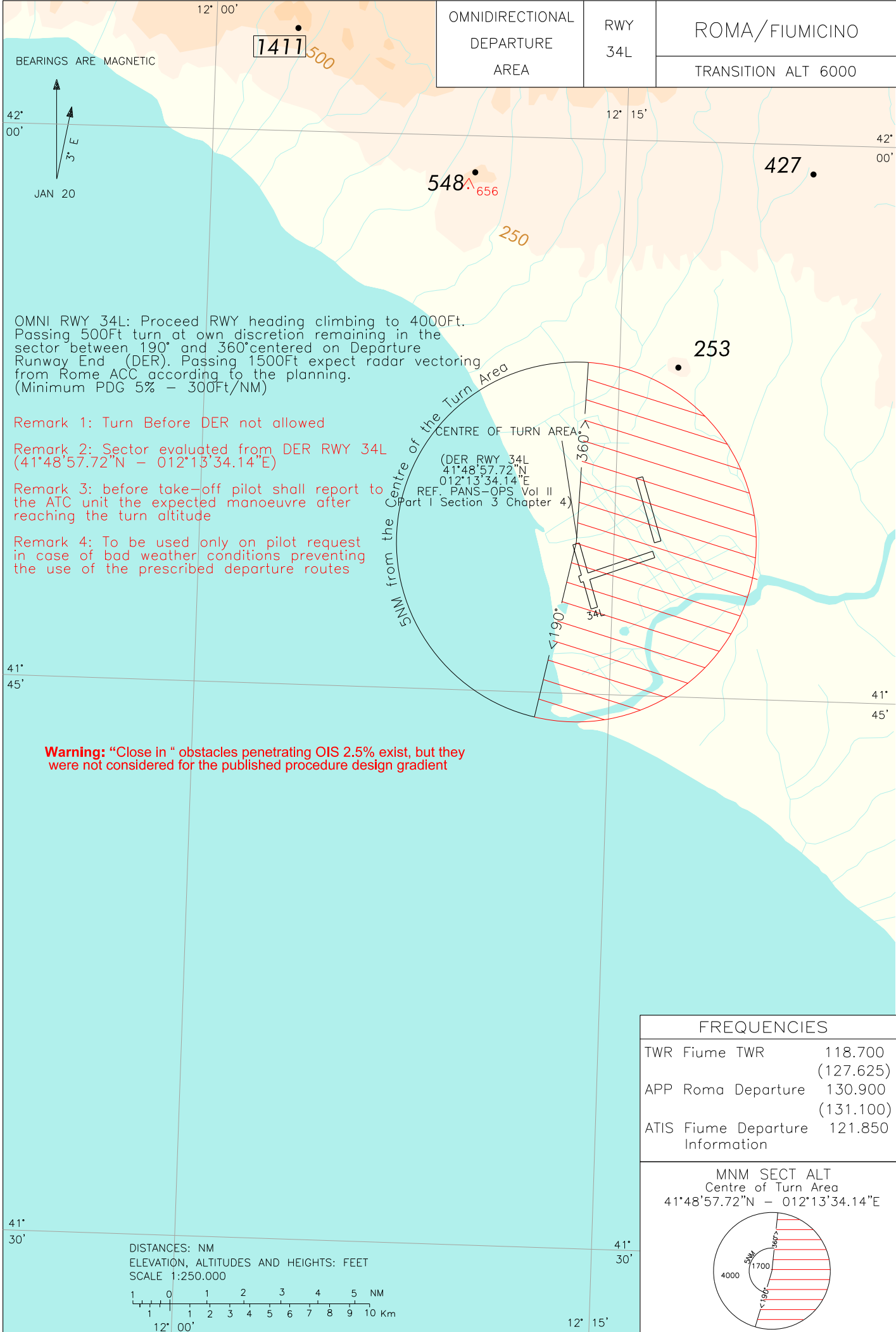
WAYPOINT LIST

Waypoint Identifier	Coordinates
RF531	41°40'23.1"N 012°25'24.4"E
RF532	41°38'06.1"N 012°22'33.7"E
RF622	41°26'52.2"N 012°16'59.5"E

Intenzionalmente bianca

Intentionally left blank

OMNIDIRECTIONAL DEPARTURE AREA	RWY 34L	ROMA/FIUMICINO
		TRANSITION ALT 6000



BEARINGS ARE MAGNETIC
 JAN 20

OMNI RWY 34L: Proceed RWY heading climbing to 4000ft. Passing 500ft turn at own discretion remaining in the sector between 190° and 360° centered on Departure Runway End (DER). Passing 1500ft expect radar vectoring from Rome ACC according to the planning. (Minimum PDG 5% - 300ft/NM)

Remark 1: Turn Before DER not allowed

Remark 2: Sector evaluated from DER RWY 34L (41°48'57.72"N - 012°13'34.14"E)

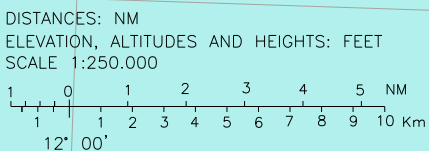
Remark 3: before take-off pilot shall report to the ATC unit the expected manoeuvre after reaching the turn altitude

Remark 4: To be used only on pilot request in case of bad weather conditions preventing the use of the prescribed departure routes

Warning: "Close in" obstacles penetrating OIS 2.5% exist, but they were not considered for the published procedure design gradient

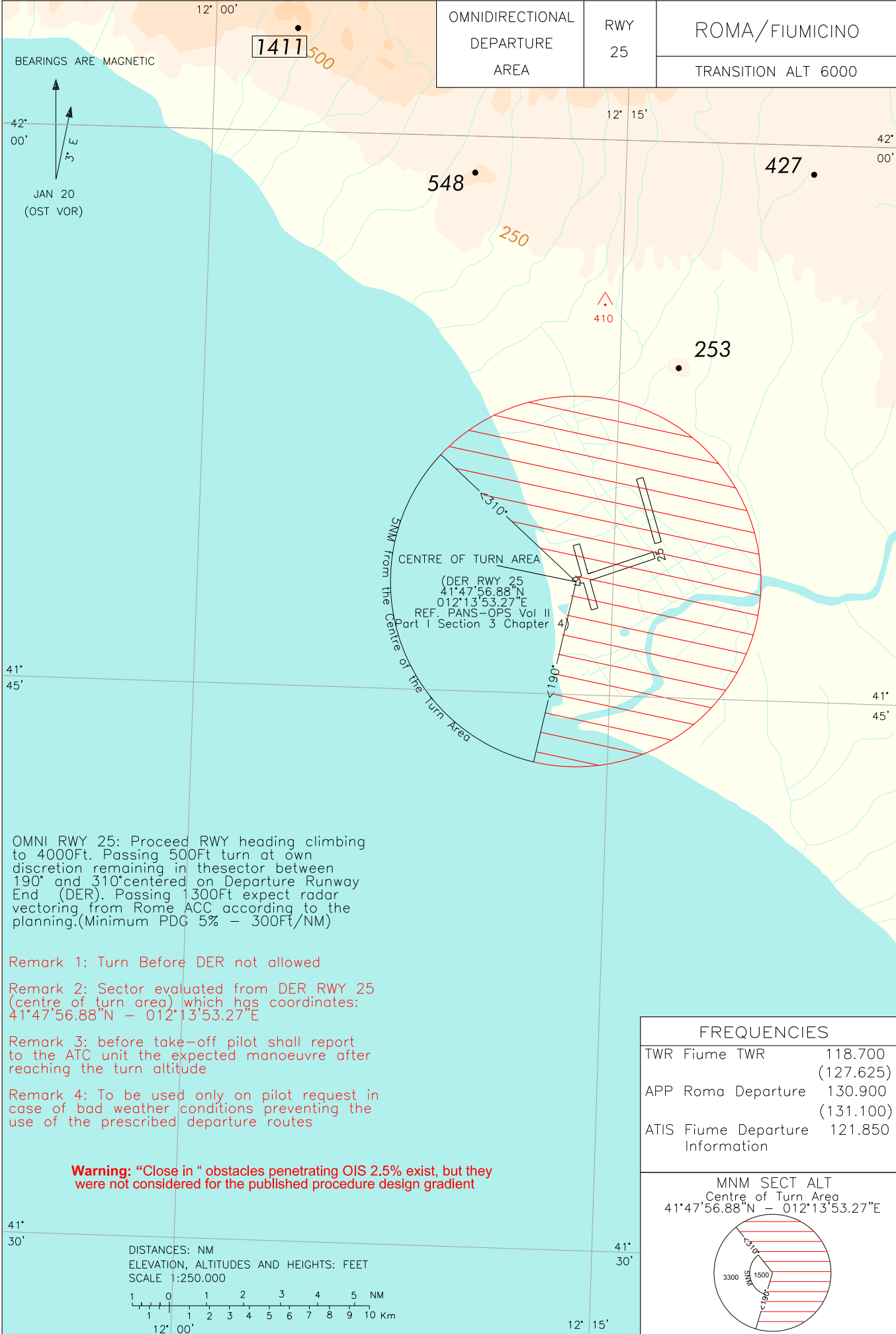
FREQUENCIES	
TWR Fiume TWR	118.700 (127.625)
APP Roma Departure	130.900 (131.100)
ATIS Fiume Departure Information	121.850

MNM SECT ALT
 Centre of Turn Area
 41°48'57.72"N - 012°13'34.14"E



CHANGE: CLOSE IN OBSTACLES WARNING ADDED

OMNIDIRECTIONAL DEPARTURE AREA	RWY	ROMA/FIUMICINO
	25	TRANSITION ALT 6000



CHANGE: CLOSE IN OBSTACLES WARNING ADDED

OMNI RWY 25: Proceed RWY heading climbing to 4000ft. Passing 500ft turn at own discretion remaining in this sector between 190° and 310° centered on Departure Runway End (DER). Passing 1300ft expect radar vectoring from Rome ACC according to the planning. (Minimum PDG 5% - 300ft/NM)

Remark 1: Turn Before DER not allowed

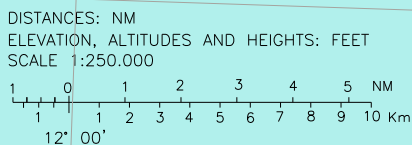
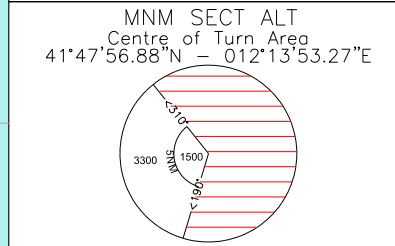
Remark 2: Sector evaluated from DER RWY 25 (centre of turn area) which has coordinates: 41°47'56.88"N - 012°13'53.27"E

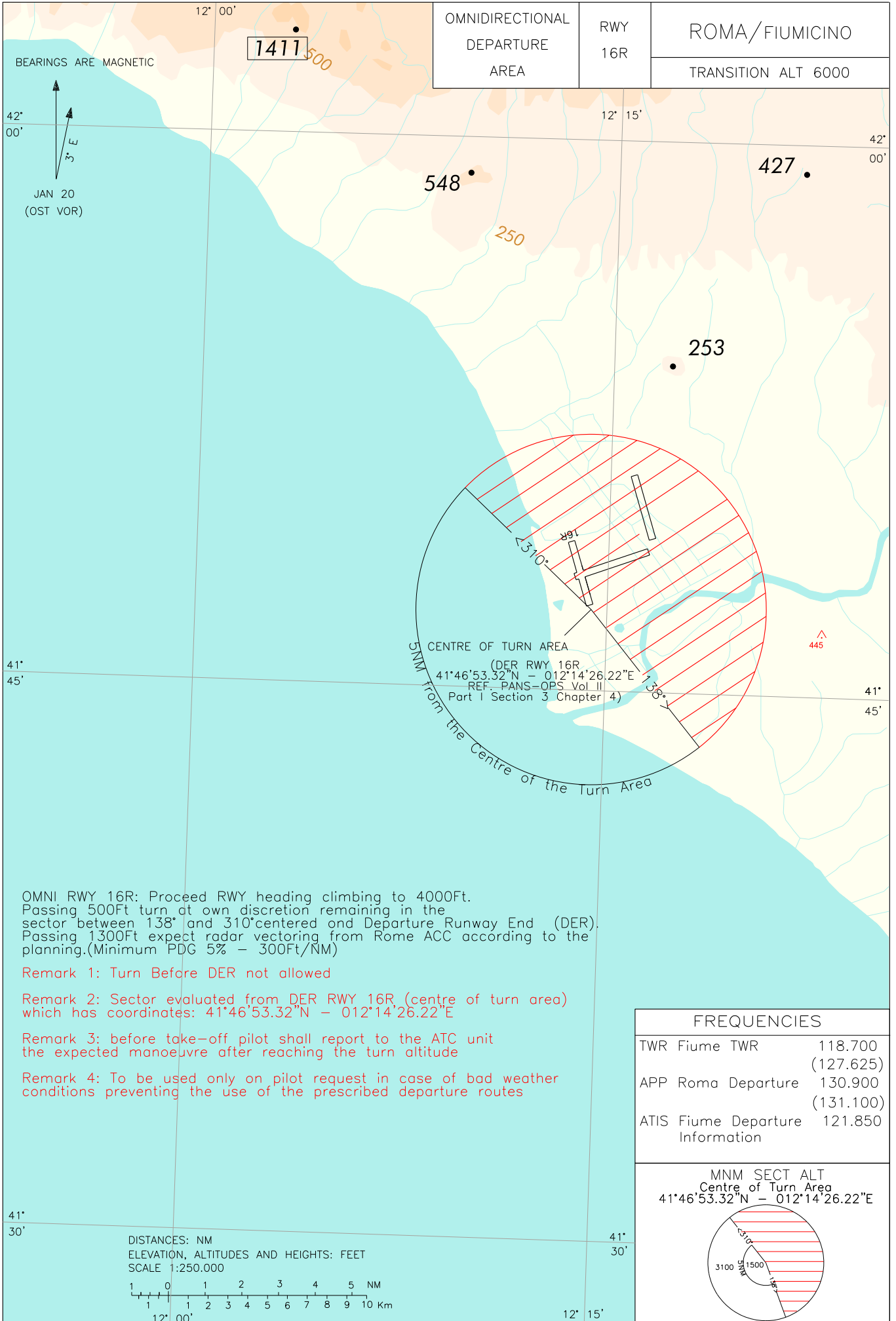
Remark 3: before take-off pilot shall report to the ATC unit the expected manoeuvre after reaching the turn altitude

Remark 4: To be used only on pilot request in case of bad weather conditions preventing the use of the prescribed departure routes

Warning: "Close in" obstacles penetrating OIS 2.5% exist, but they were not considered for the published procedure design gradient

FREQUENCIES	
TWR Fiume TWR	118.700 (127.625)
APP Roma Departure	130.900 (131.100)
ATIS Fiume Departure Information	121.850





OMNIDIRECTIONAL DEPARTURE AREA	RWY 16R	ROMA/FIUMICINO
		TRANSITION ALT 6000

BEARINGS ARE MAGNETIC



1417 500

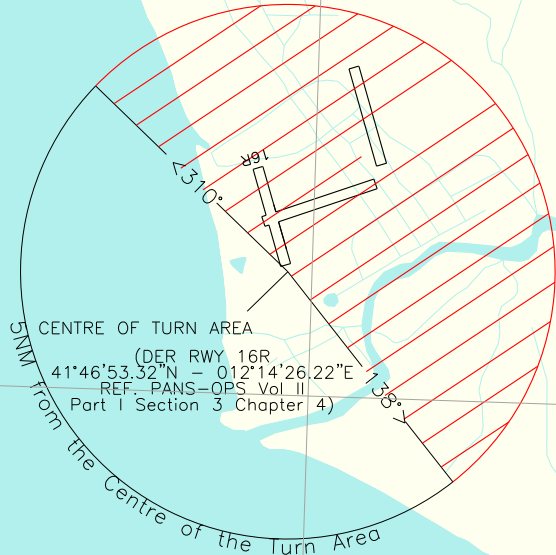
548

427

250

253

445



OMNI RWY 16R: Proceed RWY heading climbing to 4000ft.
 Passing 500ft turn at own discretion remaining in the sector between 138° and 310° centered on Departure Runway End (DER).
 Passing 1300ft expect radar vectoring from Rome ACC according to the planning. (Minimum PDG 5% - 300ft/NM)

Remark 1: Turn Before DER not allowed

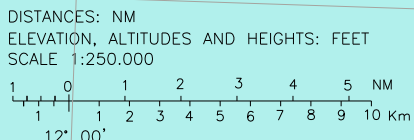
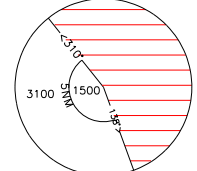
Remark 2: Sector evaluated from DER RWY 16R (centre of turn area) which has coordinates: 41°46'53.32"N - 012°14'26.22"E

Remark 3: before take-off pilot shall report to the ATC unit the expected manoeuvre after reaching the turn altitude

Remark 4: To be used only on pilot request in case of bad weather conditions preventing the use of the prescribed departure routes

FREQUENCIES	
TWR Fiume TWR	118.700 (127.625)
APP Roma Departure	130.900 (131.100)
ATIS Fiume Departure Information	121.850

MNM SECT ALT
 Centre of Turn Area
 41°46'53.32"N - 012°14'26.22"E



CHANGE: REPRINTING