

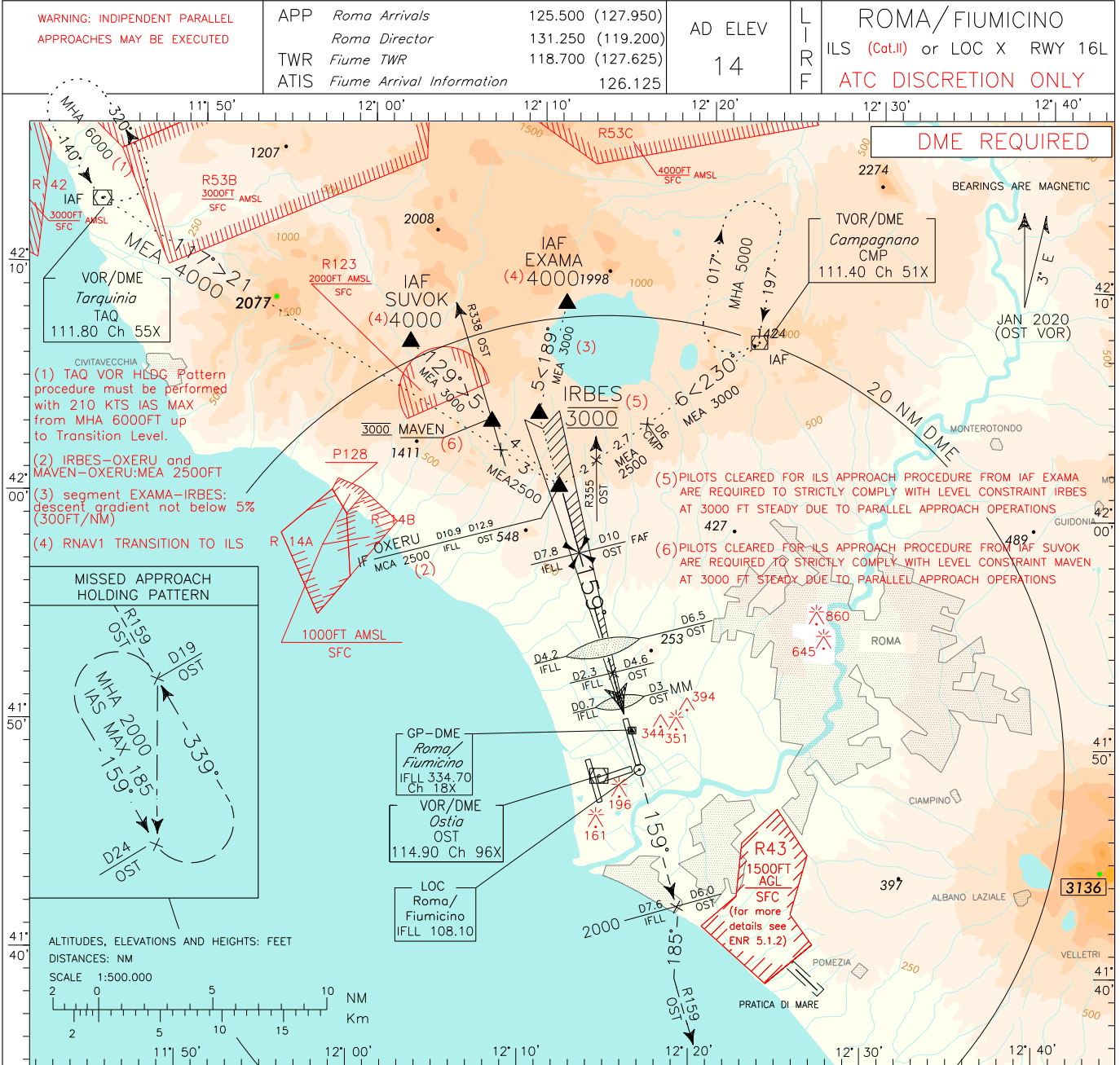
|                 |  |         |                  |                |
|-----------------|--|---------|------------------|----------------|
| SCALE 1:250.000 | FIS Roma Information 125.750             | AD ELEV | L<br>I<br>R<br>F | ROMA/FIUMICINO |
| 0 5 NM          | APP Roma Arrivals 125.500                | 14      |                  |                |
| 0 5 Km          | TWR Fiume TWR 118.700 (127.625)          |         |                  |                |
|                 | ATIS Fiume Arrival Information 126.125   |         |                  |                |
|                 | ATIS Fiume Departure Information 121.850 |         |                  |                |
|                 |  |         |                  |                |



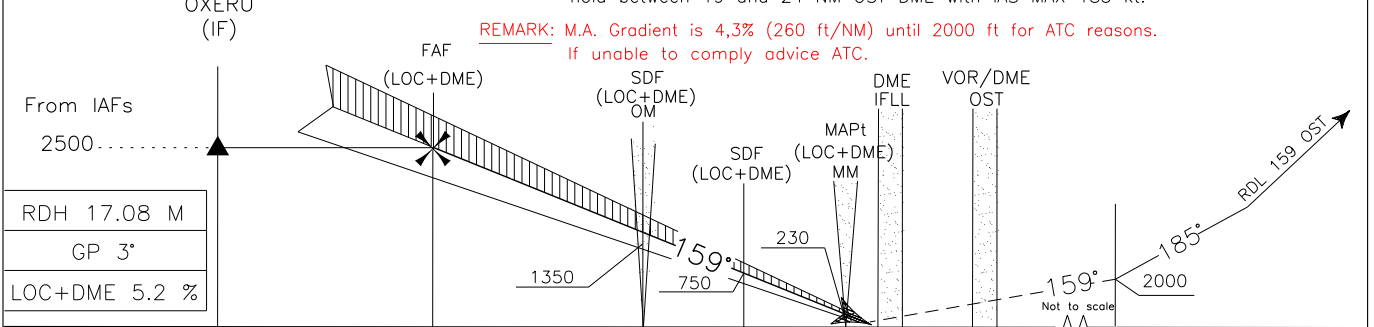
CHANGE: OST NDB COMPLETELY WITHDRAWN AND CHART UPDATED

|  |        |         |
|--|--------|---------|
| AIRSPACE CLASSIFICATION See AIP ENR 1.4          | REMARK | WARNING |
| TRANSITION ALT 6000 FT                           |        |         |
| ELEV AND ALT IN FT<br>IF NOT OTHERWISE INDICATED |        |         |

DOC. 8168 ED.6 – 2014 – AMDT 7



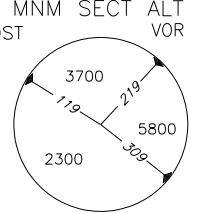
TRANSITION ALT 6000  
 MISSED APPROACH: Proceed on RWY heading 159°, climb to 2000 ft; at 6 NM OST DME to be reached at 2000 ft, turn right heading 185° to join RDL 159 OST VOR; hold between 19 and 24 NM OST DME with IAS MAX 185 kt.



REMARK: M.A. Gradient is 4.3% (260 ft/NM) until 2000 ft for ATC reasons. If unable to comply advise ATC.

IFLL DME: D10.9, D7.8, D4.2, D2.3, D0.7, THR Elev 14, D7.6

| OCA(OCH)             |            | A         | B         | C         | D         | FT per MIN | GS  | FAF-OM | OM-MM  | MNM SECT ALT VOR |
|----------------------|------------|-----------|-----------|-----------|-----------|------------|-----|--------|--------|------------------|
| STRAIGHT IN APPROACH | ILS CAT I  | 214 (200) | 214 (200) | 214 (200) | 214 (200) |            |     |        |        |                  |
|                      | ILS CAT II | 84 (70)   | 94 (80)   | 99 (83)   | 114 (100) | 530        | 100 | 2 : 10 | 2 : 06 |                  |
|                      | LOC        | 420 (406) |           |           |           | 635        | 120 | 1 : 48 | 1 : 45 |                  |
|                      | CIRCLING   | 800 (786) |           | 900 (886) |           | 745        | 140 | 1 : 33 | 1 : 30 |                  |
|                      |            |           |           |           |           | 850        | 160 | 1 : 21 | 1 : 19 |                  |

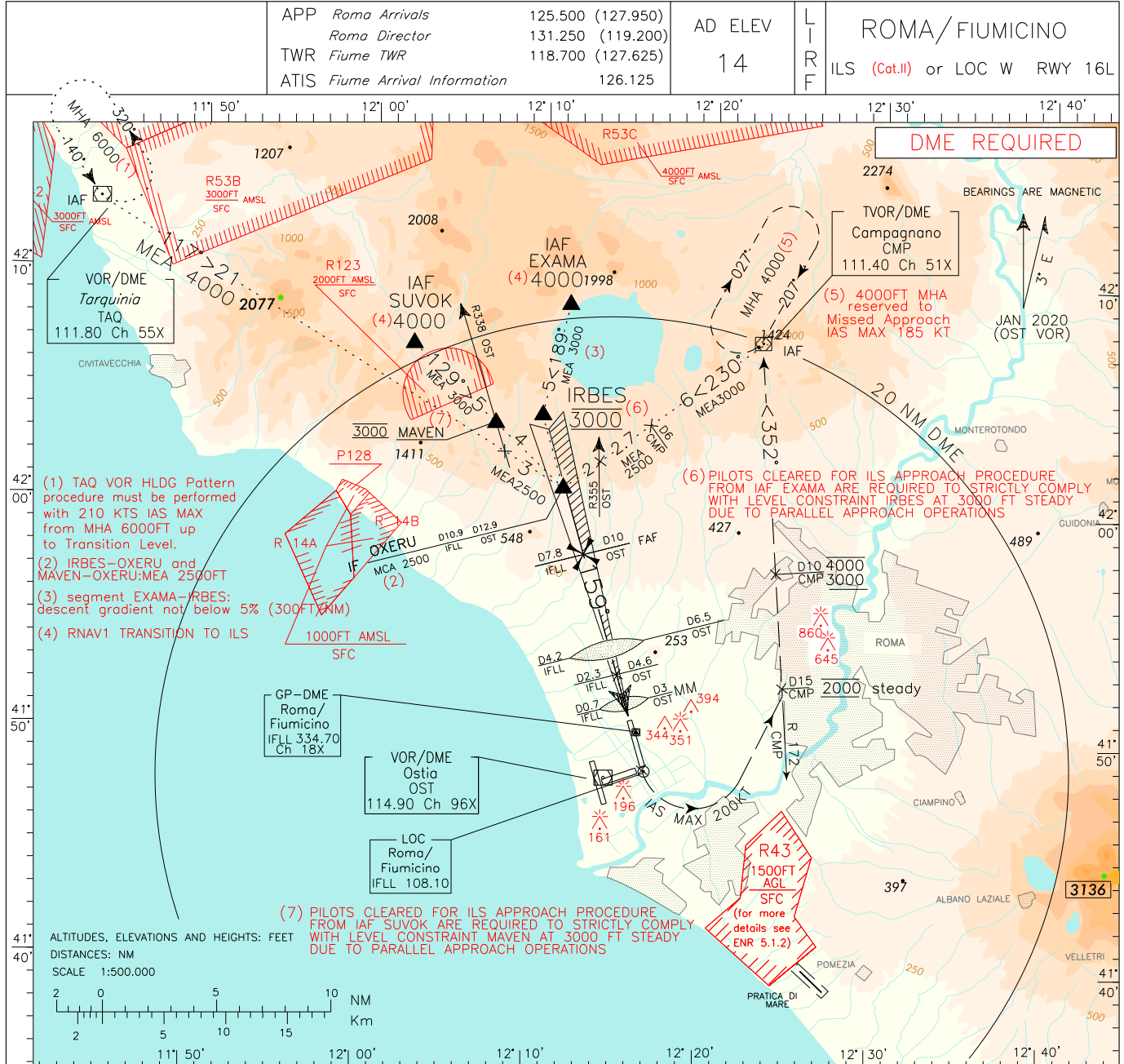


|      |                           |                   |         |      |                               |
|------|---------------------------|-------------------|---------|------|-------------------------------|
| APP  | Roma Arrivals             | 125.500 (127.950) | AD ELEV | LIRF | ROMA/FIUMICINO                |
|      | Roma Director             | 131.250 (119.200) |         |      |                               |
| TWR  | Fiume TWR                 | 118.700 (127.625) |         |      |                               |
| ATIS | Fiume Arrival Information | 126.125           |         |      |                               |
|      |                           |                   | 14      |      | ILS (Cat.II) or LOC W RWY 16L |

AMDT 7

DOC. 8168 ED.6 – 2014 –

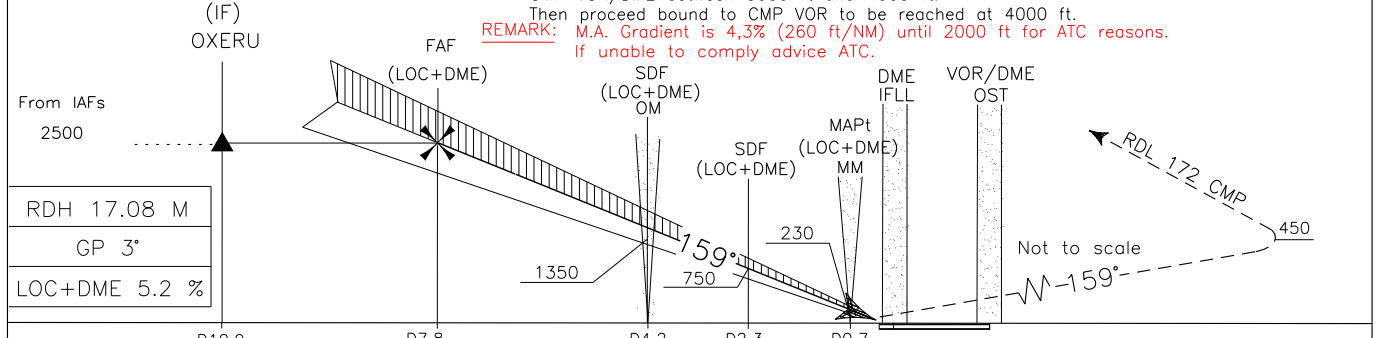
CHANGE: MAGNETIC DECLINATION UPDATED



**TRANSITION ALT 6000**

**MISSED APPROACH:** Proceed on RWY heading 159° climbing to 4000 ft; at 450 ft, not before THR 16L, turn left (IAS MAX 200 kt) to join RDL 172 CMP VOR. Maintain 2000 ft until point RDL 172/15 NM CMP VOR/DME, then climb in order to cross RDL 172/10 NM CMP VOR/DME between 3000 ft and 4000 ft. Then proceed bound to CMP VOR to be reached at 4000 ft.

**REMARK:** M.A. Gradient is 4.3% (260 ft/NM) until 2000 ft for ATC reasons. If unable to comply advice ATC.

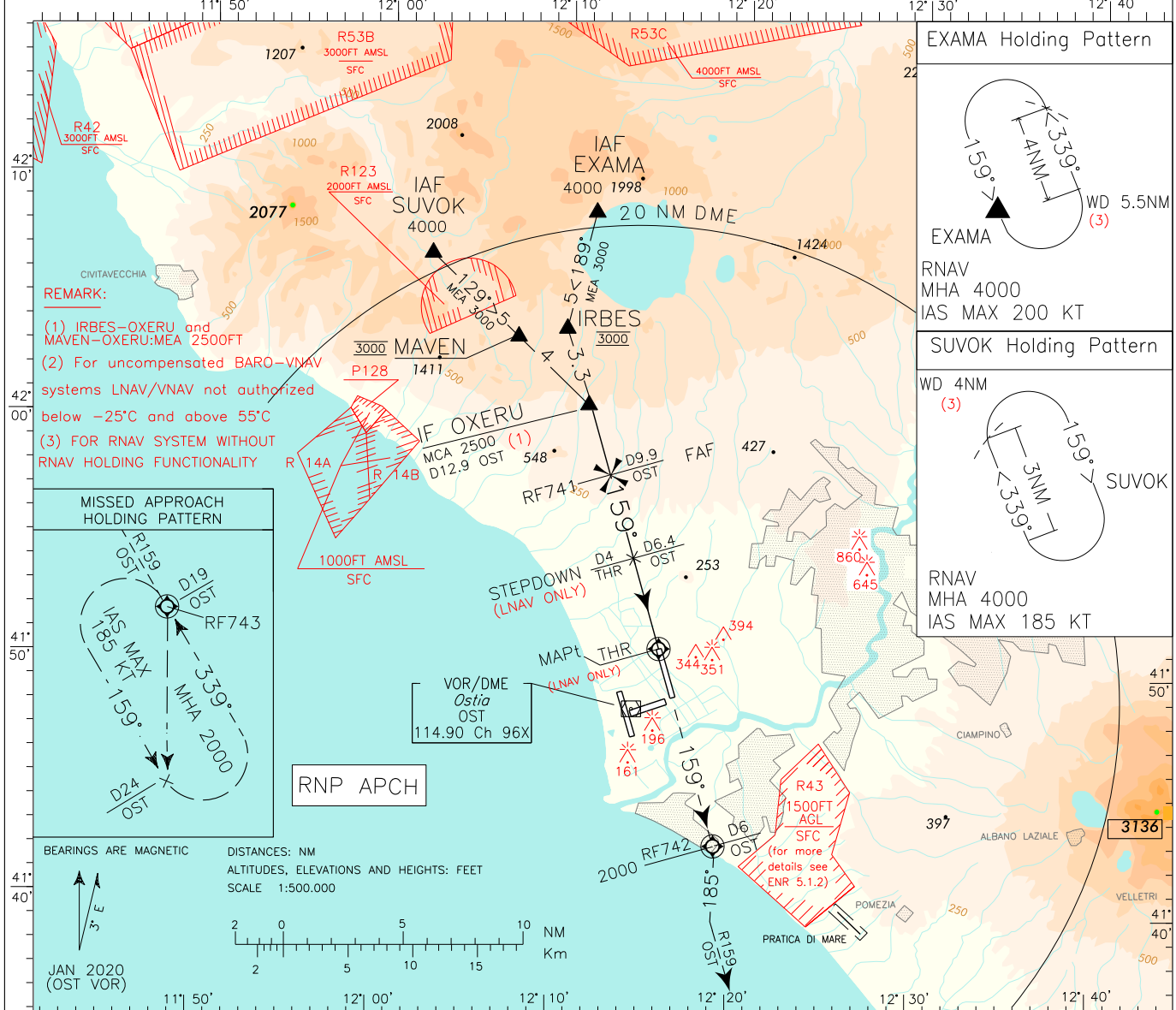


|                             |            |           |           |           |           |      |             |                   |           |               |              |                     |   |   |   |   |   |           |
|-----------------------------|------------|-----------|-----------|-----------|-----------|------|-------------|-------------------|-----------|---------------|--------------|---------------------|---|---|---|---|---|-----------|
| <b>IFLL DME</b>             |            | D10.9     | D7.8      | D4.2      | D2.3      | D0.7 | THR Elev 14 | <b>IFLL DME</b>   |           |               |              |                     |   |   |   |   |   |           |
| <b>NM</b>                   |            | 11        | 10        | 9         | 8         | 7    | 6           | 5                 | 4         | 3             | 2            | 1                   | 0 | 1 | 2 | 3 | 4 | <b>NM</b> |
| <b>OCA(OCH)</b>             |            | A         | B         | C         | D         |      |             | <b>FT per MIN</b> | <b>GS</b> | <b>FAF-OM</b> | <b>OM-MM</b> | <b>MNM SECT ALT</b> |   |   |   |   |   |           |
| <b>STRAIGHT IN APPROACH</b> | ILS CAT I  | 269 (255) | 281 (267) | 289 (275) | 300 (286) |      |             | 425               | 80        | 2 : 42        | 2 : 38       | OST                 |   |   |   |   |   |           |
|                             | ILS CAT II | 170 (156) | 180 (166) | 185 (171) | 200 (186) |      |             | 530               | 100       | 2 : 10        | 2 : 06       |                     |   |   |   |   |   |           |
|                             | LOC        | 420 (406) |           |           |           |      |             | 635               | 120       | 1 : 48        | 1 : 45       |                     |   |   |   |   |   |           |
| <b>CIRCLING</b>             |            | 800 (786) |           | 900 (886) |           |      |             | 745               | 140       | 1 : 33        | 1 : 30       |                     |   |   |   |   |   |           |
|                             |            |           |           |           |           |      |             | 850               | 160       | 1 : 21        | 1 : 19       |                     |   |   |   |   |   |           |

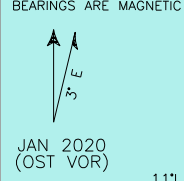
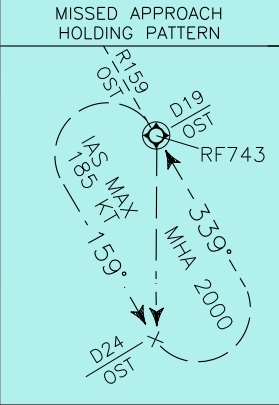
DOC. 8168 ED.6-2014

CHANGE: NEW MISSED APPROACH REMARK

|                           |      |                           |                   |         |      |                               |
|---------------------------|------|---------------------------|-------------------|---------|------|-------------------------------|
| EGNOS<br>CH 45332<br>E16A | APP  | Roma Arrivals             | 125.500 (127.950) | AD ELEV | LIRF | ROMA/FIUMICINO<br>RNP RWY 16L |
|                           |      | Roma Director             | 131.250 (119.200) |         |      |                               |
|                           | TWR  | Fiume TWR                 | 118.700 (127.625) | 14      |      |                               |
|                           | ATIS | Fiume Arrival Information | 126.125           |         |      |                               |

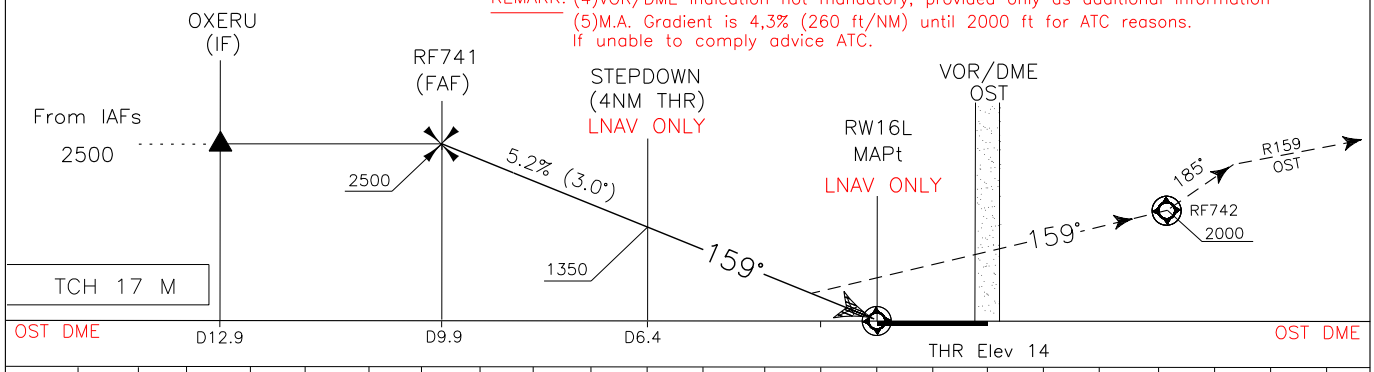


**REMARK:**  
 (1) IRBES-OXERU and MAVEN-OXERU:MEA 2500FT  
 (2) For uncompensated BARO-VNAV systems LNAV/VNAV not authorized below -25°C and above 55°C  
 (3) FOR RNAV SYSTEM WITHOUT RNAV HOLDING FUNCTIONALITY



**TRANSITION ALT 6000**  
**MISSED APPROACH:** Proceed on RWY heading 159°, climb to 2000 ft; at RF742 (6 NM OST DME) to be reached at 2000 ft, turn right heading 185° (IAS MAX 185kt) to join TR 159° (RDL 159 OST VOR) bound to RF743. Hold between 19 and 24 NM OST DME.

**REMARK:** (4)VOR/DME indication not mandatory, provided only as additional information  
 (5)M.A. Gradient is 4.3% (260 ft/NM) until 2000 ft for ATC reasons.  
 If unable to comply advice ATC.



|                      |           |           |           |           |             |            |        |         |             |             |                                  |   |   |   |   |   |   |   |   |   |   |   |   |   |    |
|----------------------|-----------|-----------|-----------|-----------|-------------|------------|--------|---------|-------------|-------------|----------------------------------|---|---|---|---|---|---|---|---|---|---|---|---|---|----|
| OST DME              |           | D12.9     | D9.9      | D6.4      | THR Elev 14 | OST DME    |        |         |             |             |                                  |   |   |   |   |   |   |   |   |   |   |   |   |   |    |
| NM                   |           | 14        | 13        | 12        | 11          | 10         | 9      | 8       | 7           | 6           | 5                                | 4 | 3 | 2 | 1 | 0 | 1 | 2 | 3 | 4 | 5 | 6 | 7 | 8 | NM |
| STRAIGHT IN APPROACH | OCA(OCH)  | A         | B         | C         | D           | FT per MIN | GS     | FAF-THR | DIST THR    | ALT (HGT)   | MNM SECT ALT ARP<br>25NM<br>5800 |   |   |   |   |   |   |   |   |   |   |   |   |   |    |
|                      | LPV       | 290 (276) | 300 (286) | 310 (296) | 320 (306)   | 425        | 80     | 7.6 NM  | 7           | 2300 (2286) |                                  |   |   |   |   |   |   |   |   |   |   |   |   |   |    |
|                      | LNAV/VNAV | 480 (466) | 490 (476) | 500 (486) | 510 (496)   | 530        | 100    | 5 : 42  | 6           | 1980 (1966) |                                  |   |   |   |   |   |   |   |   |   |   |   |   |   |    |
|                      | LNAV      | 570 (556) |           |           |             | 635        | 120    | 4 : 34  | 5           | 1660 (1646) |                                  |   |   |   |   |   |   |   |   |   |   |   |   |   |    |
|                      | CIRCLING  | 800 (786) |           | 900 (886) |             | 745        | 140    | 3 : 48  | 4           | 1345 (1331) |                                  |   |   |   |   |   |   |   |   |   |   |   |   |   |    |
|                      |           |           |           |           | 850         | 160        | 3 : 16 | 3       | 1025 (1011) |             |                                  |   |   |   |   |   |   |   |   |   |   |   |   |   |    |
|                      |           |           |           |           |             |            | 2 : 51 | 2       | 710 (696)   |             |                                  |   |   |   |   |   |   |   |   |   |   |   |   |   |    |
|                      |           |           |           |           |             |            |        | 1       | 390 (376)   |             |                                  |   |   |   |   |   |   |   |   |   |   |   |   |   |    |

## Roma Fiumicino RNP RWY 16L – Instrument Approach procedure via SUVOK

| Serial Number | Path Terminator | Waypoint Identifier | Fly Over | Course °M(°T) | Magnetic Variation | Distance (NM) | Turn Direction | Altitude (ft) | Speed Limit (kt) | VPA/TCH | Navigation Specification |
|---------------|-----------------|---------------------|----------|---------------|--------------------|---------------|----------------|---------------|------------------|---------|--------------------------|
| 010           | IF              | SUVOK               | -        | -             | -                  | -             | -              | +4000         | -                | -       | RNAV1                    |
| 020           | TF              | MAVEN               | -        | 129°(132.4°)  | -                  | 5.0           | -              | @3000         | -                | -       | RNAV1                    |
| 030           | TF              | OXERU               | -        | 129°(132.4°)  | -                  | 4.0           | -              | +2500         | 210              | -       | RNP APCH                 |
| 040           | TF              | RF741               | -        | 159°(162.6°)  | -                  | 3.0           | -              | +2500         | -                | -       | RNP APCH                 |
| 050           | TF              | RW16L               | Y        | 159°(162.6°)  | -                  | 7.5           | -              | -             | -                | 3°/17M  | RNP APCH                 |
| 060           | CF              | RF742               | Y        | 159°(162.6°)  | 3                  | 8.1           | -              | +2000         | -                | -       | RNP APCH                 |
| 070           | CF              | RF743               | -        | 159°(162.0°)  | 3                  | -             | -              | +2000         | 185              | -       | RNAV1                    |
| 080           | HM              | RF743               | Y        | 339°(342.0°)  | 3                  | -             | L              | +2000         | 185              | -       | RNAV1                    |

## Roma Fiumicino RNP RWY 16L – Instrument Approach procedure via EXAMA

| Serial Number | Path Terminator | Waypoint Identifier | Fly Over | Course °M(°T) | Magnetic Variation | Distance (NM) | Turn Direction | Altitude (ft) | Speed Limit (kt) | VPA/TCH | Navigation Specification |
|---------------|-----------------|---------------------|----------|---------------|--------------------|---------------|----------------|---------------|------------------|---------|--------------------------|
| 010           | IF              | EXAMA               | -        | -             | -                  | -             | -              | +4000         | -                | -       | RNAV1                    |
| 020           | TF              | IRBES               | -        | 189°(192.5°)  | -                  | 5.0           | -              | @3000         | -                | -       | RNAV1                    |
| 030           | TF              | OXERU               | -        | 159°(162.6°)  | -                  | 3.3           | -              | +2500         | 210              | -       | RNP APCH                 |
| 040           | TF              | RF741               | -        | 159°(162.6°)  | -                  | 3.0           | -              | +2500         | -                | -       | RNP APCH                 |
| 050           | TF              | RW16L               | Y        | 159°(162.6°)  | -                  | 7.5           | -              | -             | -                | 3°/17M  | RNP APCH                 |
| 060           | CF              | RF742               | Y        | 159°(162.6°)  | 3                  | 8.1           | -              | +2000         | -                | -       | RNP APCH                 |
| 070           | CF              | RF743               | -        | 159°(162.0°)  | 3                  | -             | -              | +2000         | 185              | -       | RNAV1                    |
| 080           | HM              | RF743               | Y        | 339°(342.0°)  | 3                  | -             | L              | +2000         | 185              | -       | RNAV1                    |

| Path Terminator | Waypoint Name | Inbound Course °M(°T) | Leg Distance (NM) (1) | Timing(min.)/Waypoint Distance (NM) (2) | Turn Direction | Minimum Altitude (FT) | Maximum Altitude (FL) | Speed Limit (kt) | Magnetic Variation (°) | Navigation Performance  |
|-----------------|---------------|-----------------------|-----------------------|---|----------------|-----------------------|-----------------------|------------------|------------------------|-------------------------|
| HM              | EXAMA         | 159 (162)             | 4                     | -/5.5                                   | L              | 4000                  | -                     | 200              | 3                      | RNAV1                   |
| HM              | SUVOK         | 159 (162)             | 3                     | -/4                                     | R              | 4000                  | -                     | 185              | 3                      | RNAV1                   |
| HM              | RF743         | 339.0° (342.0°)       | 5                     | - / 7.0                                 | L              | 2000                  | -                     | 185              | 3                      | Conventional/<br>RNAV 1 |

(1) RNAV system with holding functionality

(2) RNAV system without holding functionality

**WAYPOINT LIST**  
**RNP RWY16L**

| Waypoint Identifier | Coordinates                 |
|---------------------|-----------------------------|
| RF741               | 41°58'02.5"N 012°12'37.8" E |
| RF742               | 41°43'17.8"N 012°18'48.4"E  |
| RF743               | 41°30'09.2"N 012°22'03.7"E  |
| RF744               | 42°04'02.3"N 012°16'14.1"E  |
| RF747               | 42°02'29.0"N 012°07'54.7"E  |
| RF748               | 42°03'48.3"N 012°16'27.6"E  |

**SBAS FAS DATA BLOCK LIRF RNP RWY 16L**

| INPUT DATA                          |               |
|-------------------------------------|---------------|
| PARAMETERS                          | VALUES        |
| Operation Type                      | 0             |
| SBAS Provider                       | 1             |
| Airport Identifier                  | LIRF          |
| Runway                              | 16            |
| Runway Direction                    | 3             |
| Approach Performance Designator     | 0             |
| Route Indicator                     |               |
| Reference Path Data Selector        | 0             |
| Reference Path Identifier           | E16A          |
| LTP/FTP Latitude                    | 415045.4900N  |
| LTP/FTP Longitude                   | 0121541.3810E |
| LTP/FTP Ellipsoidal Height (metres) | 52.2          |
| FPAP Latitude                       | 414842.4365N  |
| Delta FPAP Latitude (seconds)       | -123.0535     |
| FPAP Longitude                      | 0121632.8770E |
| Delta FPAP Longitude (seconds)      | 51.4960       |
| Threshold Crossing Height           | 17.0          |
| TCH Units Selector                  | 1             |
| Glidepath Angle (degrees)           | 3.00          |
| Course Width (metres)               | 105.00        |
| Length Offset (metres)              | 80            |
| HAL                                 | 40.0          |
| VAL                                 | 50.0          |

| OUTPUT DATA          |  |
|----------------------|--|
| Data Block           | 10 06 12 09 0C D0 00 00 01 36<br>31 05 E4 55 F5 11 8A 16 43 05<br>0A 16 A5 3E FC 50 92 01 54 81<br>2C 01 64 0A C8 FA B4 91 43 84 |
| Calculated CRC Value | B4914384   |

Intenzionalmente bianca

*Intentionally left blank*

ICAO - INSTRUMENT APPROACH CHART

AD 2 LIRF 5-11

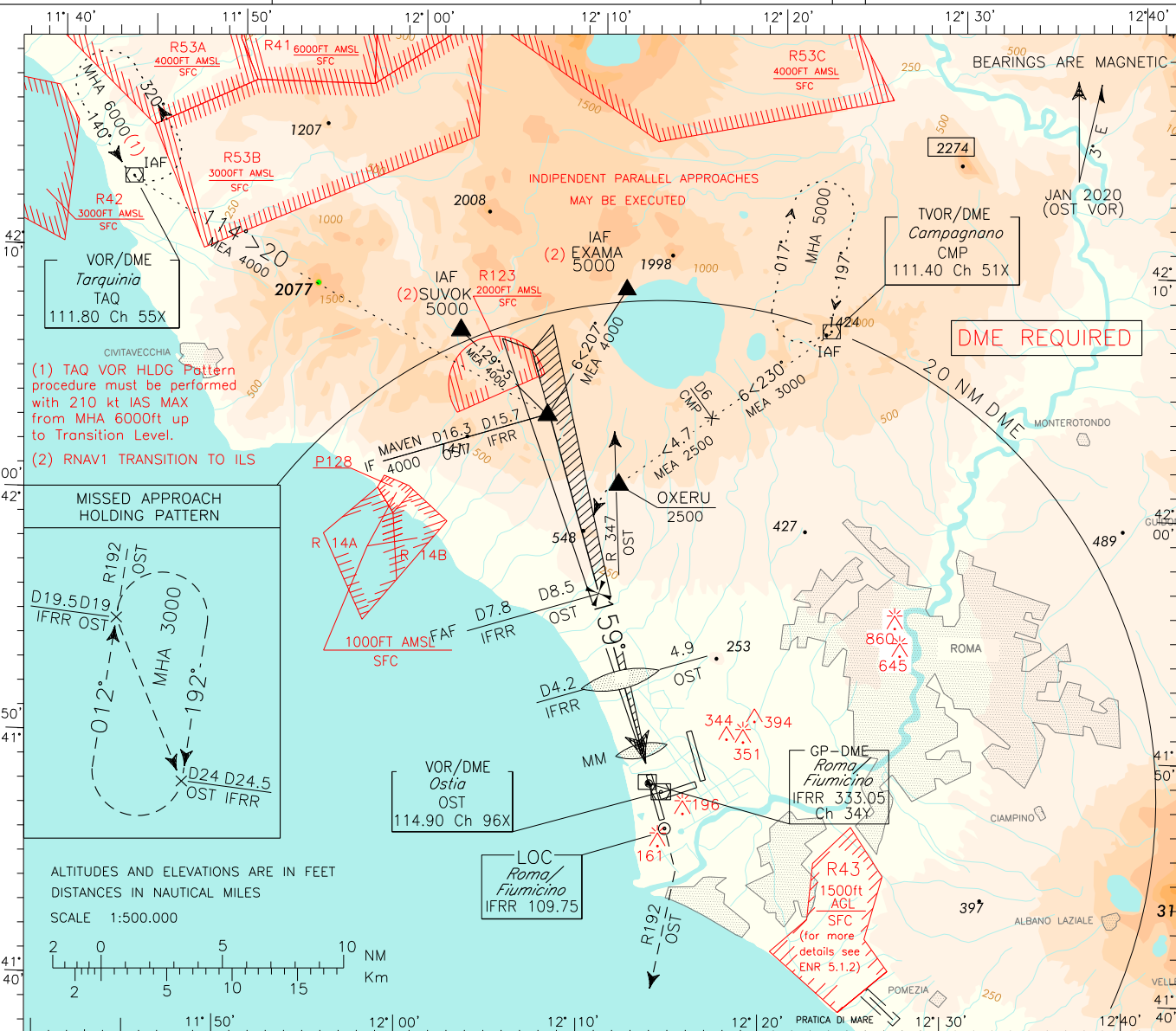
DOC. 8168 ED.6-2014 - AMDT 7

WARNING: INDEPENDENT PARALLEL APPROACHES MAY BE EXECUTED

APP Roma Arrivals 125.500 (127.950)  
 Roma Director 131.250 (119.200)  
 Fiume TWR 118.700 (127.625)  
 ATIS Fiume Arrival Information 126.125

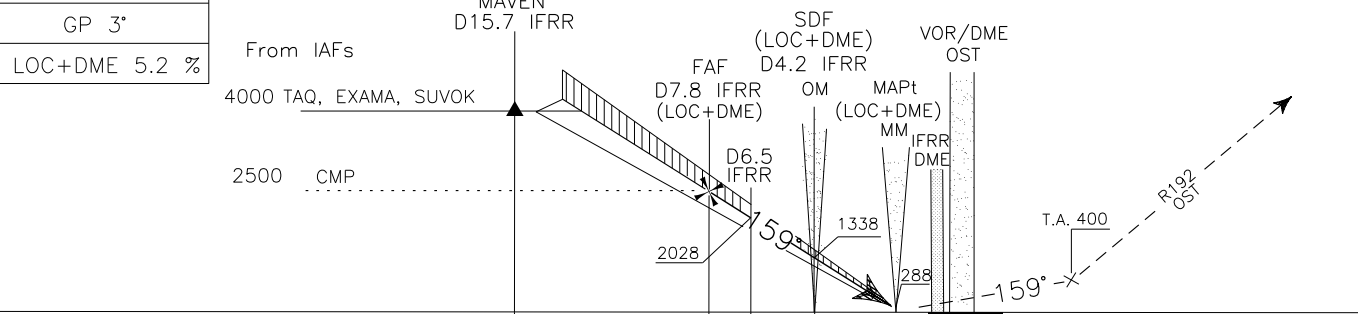
AD ELEV 14

LIRF ROMA/ FIUMICINO  
 ILS (Cat.II) or LOC Z RWY 16R



CHANGE: RENUMBERED PAGE

TRANSITION ALT 6000  
 MISSED APPROACH: Climb to 400 ft on TR 159°, then turn right to join RDL 192° OST VOR continue climb to 3000 ft, cross 2000 ft not further than 9 NM OST DME (9.5 IFRR DME), hold between 19 and 24 NM OST DME (19.5 and 24.5 IFRR DME).



|          |       |         |      |             |         |   |   |   |   |   |   |   |   |   |    |    |    |          |
|----------|-------|---------|------|-------------|---------|---|---|---|---|---|---|---|---|---|----|----|----|----------|
| OST DME  | D16.3 | D8.5 D7 | D4.9 | THR Elev 7° | OST DME |   |   |   |   |   |   |   |   |   |    |    |    |          |
| IFRR DME | 18    | 16      | 14   | 12          | 10      | 8 | 6 | 4 | 2 | 0 | 2 | 4 | 6 | 8 | 10 | 12 | 14 | IFRR DME |

| STRAIGHT IN APPROACH | ILS CAT I  | OCA(OCH)  |           |           |           | FT per MIN | GS  | FAF-OM |        | OM-MM |     | MNM SECT ALT |
|----------------------|------------|-----------|-----------|-----------|-----------|------------|-----|--------|--------|-------|-----|--------------|
|                      |            | A         | B         | C         | D         |            |     | 3.6 NM | 3.3 NM | OST   | VOR |              |
|                      |            | 190 (183) | 200 (193) | 210 (203) | 220 (213) | 420        | 80  | 2 : 42 | 2 : 28 |       |     |              |
|                      | ILS CAT II | 83 (76)   | 100 (93)  | 112 (105) | 126 (119) | 525        | 100 | 2 : 10 | 1 : 59 |       |     |              |
|                      | LOC        | 400 (386) |           |           |           | 630        | 120 | 1 : 48 | 1 : 39 |       |     |              |
|                      | CIRCLING   | 800 (786) |           | 900 (886) |           | 735        | 140 | 1 : 33 | 1 : 25 |       |     |              |
|                      |            |           |           |           |           | 845        | 160 | 1 : 21 | 1 : 14 |       |     |              |



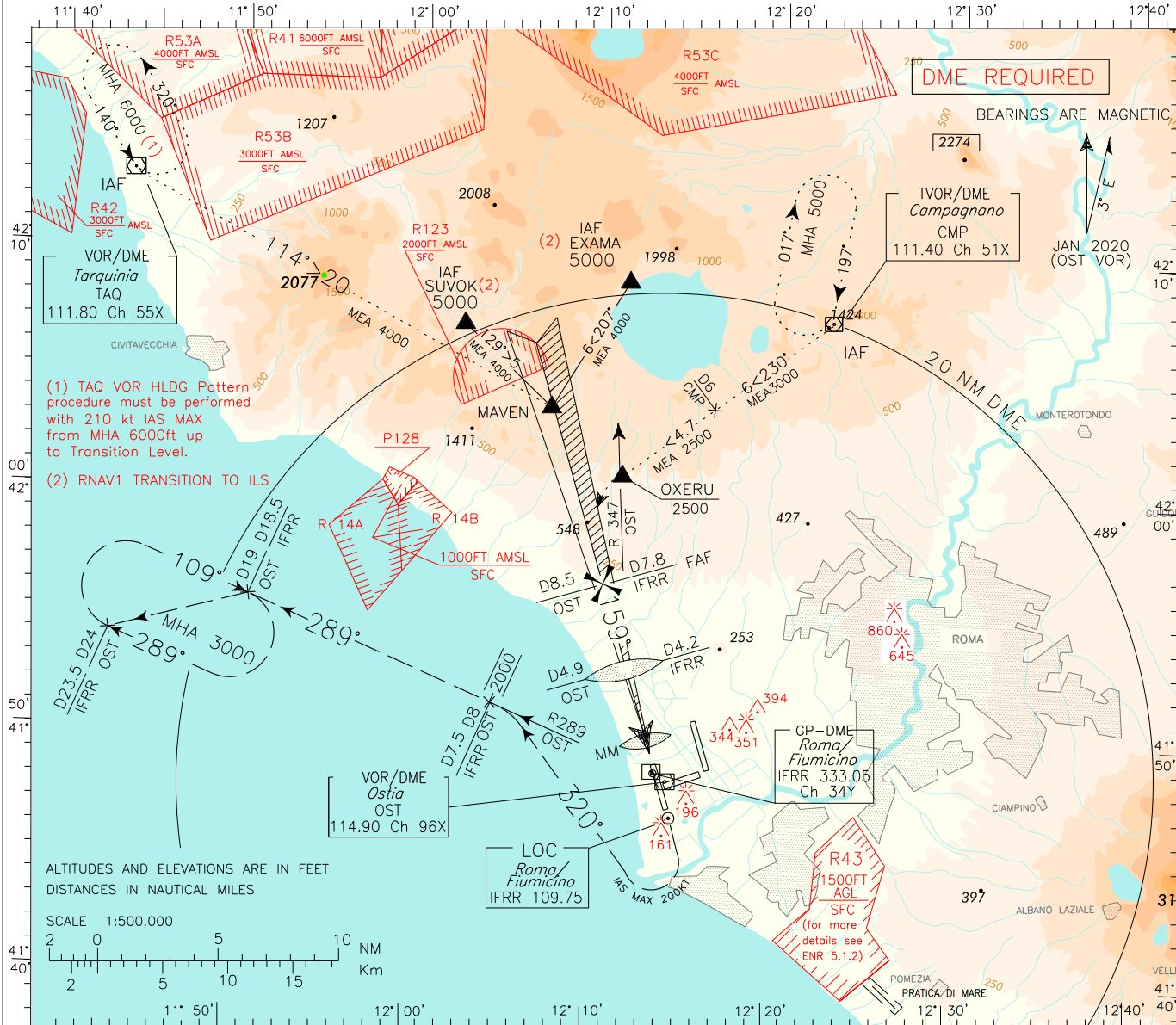
ICAO - INSTRUMENT APPROACH CHART

AD 2 LIRF 5-13

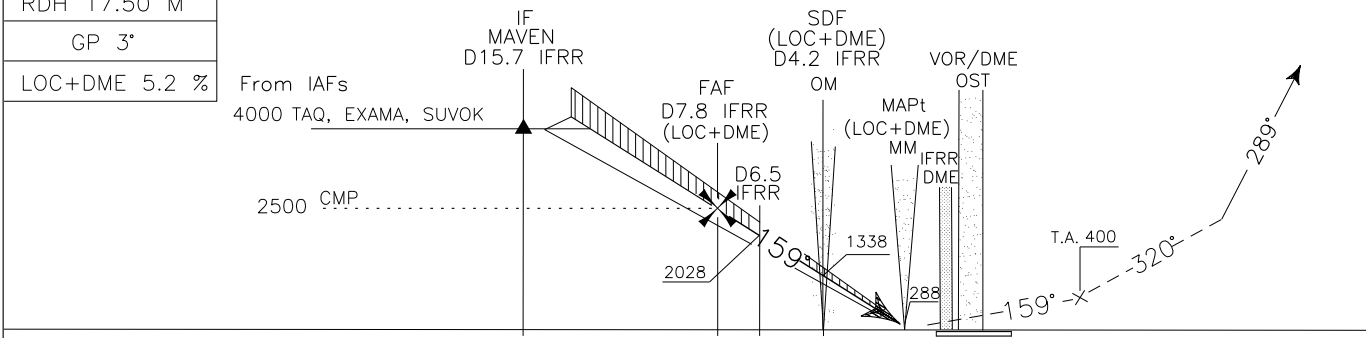
DOC. 8168 ED.6-2014 - AMDT 7

CHANGE: RENUMBERED PAGE

|      |                           |                   |         |      |                               |
|------|---------------------------|-------------------|---------|------|-------------------------------|
| APP  | Roma Arrivals             | 125.500 (127.950) | AD ELEV | LIRF | ROMA/ FIUMICINO               |
|      | Roma Director             | 131.250 (119.200) |         |      |                               |
| TWR  | Fiume TWR                 | 118.700 (127.625) | 14      |      | ILS (Cat.II) or LOC Y RWY 16R |
| ATIS | Fiume Arrival Information | 126.125           |         |      |                               |
|      |                           |                   |         |      | ATC DISCRETION ONLY           |



**MISSED APPROACH:** Proceed on TR 159° climbing to 3000 ft; crossing 400 ft turn right (IAS MAX 200 kt) on TR 320° to intercept and follow RDL 289 OST VOR. Cross point RDL 289/8 NM OST VOR/DME (7.5 IFRR DME) at 2000 ft steady. Hold on RDL 289 OST VOR between 19 and 24 NM OST DME (18.5 and 23.5 NM IFRR DME) at 3000 ft.

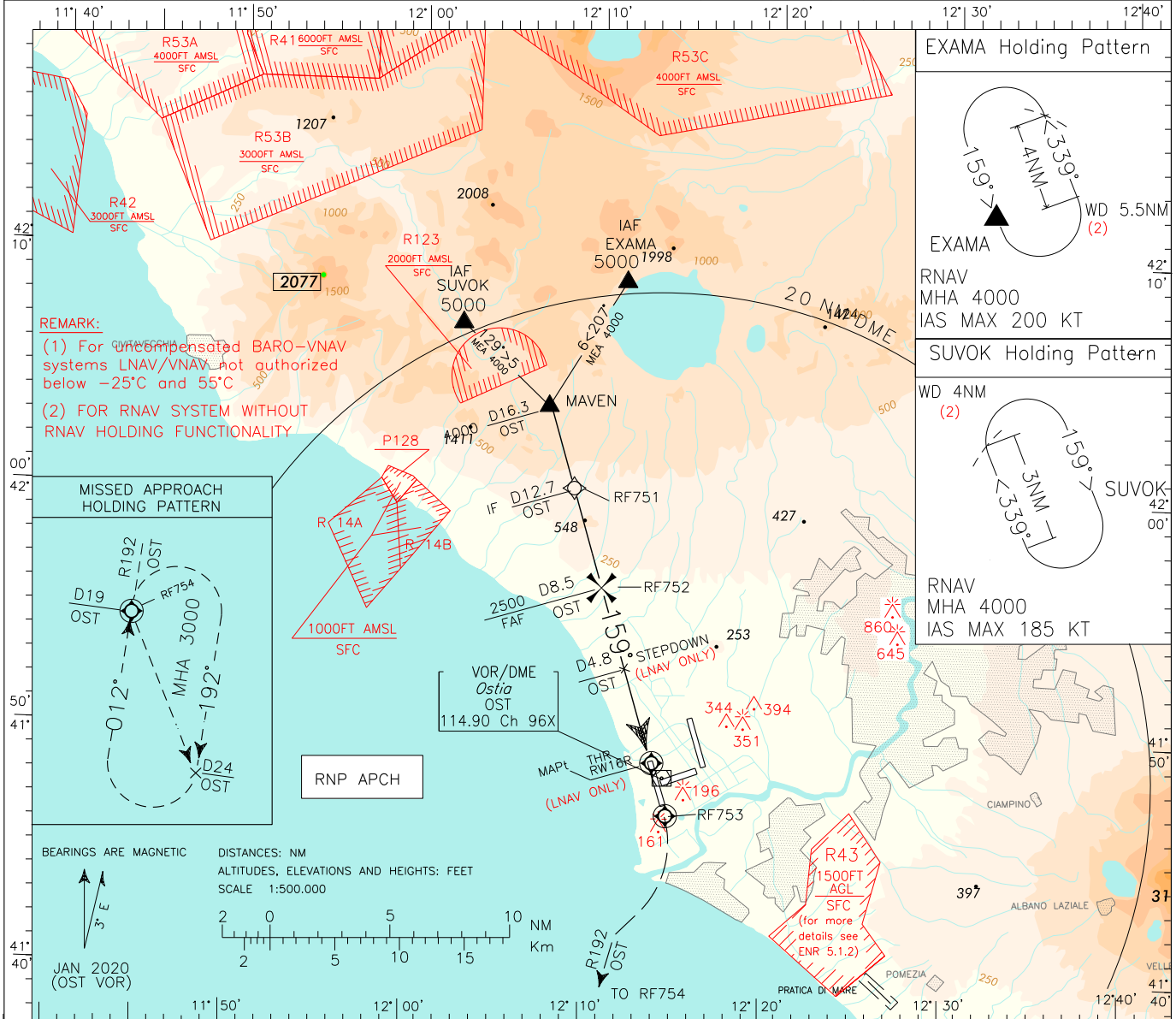


|          |       |         |          |         |         |    |    |    |    |    |    |   |   |   |   |   |   |   |   |   |    |    |    |
|----------|-------|---------|----------|---------|---------|----|----|----|----|----|----|---|---|---|---|---|---|---|---|---|----|----|----|
| OST DME  | D16.3 | D8.5 D7 | D4.9 THR | Elev 70 | OST DME |    |    |    |    |    |    |   |   |   |   |   |   |   |   |   |    |    |    |
| IFRR DME | 30    | 28      | 26       | 24      | 22      | 20 | 18 | 16 | 14 | 12 | 10 | 8 | 6 | 4 | 2 | 0 | 2 | 4 | 6 | 8 | 10 | 12 | 14 |

| STRAIGHT IN APPROACH | ILS CAT I | ILS CAT II | LOC | OCA(OCH)  |           |           |           | FT per MIN | GS  | FAF-OM |        | OM-MM |     | MNM SECT ALT |     |
|----------------------|-----------|------------|-----|-----------|-----------|-----------|-----------|------------|-----|--------|--------|-------|-----|--------------|-----|
|                      |           |            |     | A         | B         | C         | D         |            |     | 3.6 NM | 3.3 NM | OST   | VOR |              |     |
|                      |           |            |     | 190 (183) | 200 (193) | 210 (203) | 220 (213) | 420        | 80  | 2 : 42 | 2 : 28 |       |     | 3700         | 219 |
|                      |           |            |     | 83 (76)   | 100 (93)  | 112 (105) | 126 (119) | 525        | 100 | 2 : 10 | 1 : 59 |       |     | 5800         | 309 |
|                      |           |            |     | 400 (386) |           |           |           | 630        | 120 | 1 : 48 | 1 : 39 |       |     | 2300         |     |
|                      |           |            |     |           |           |           |           | 735        | 140 | 1 : 33 | 1 : 25 |       |     |              |     |
| CIRCLING             |           |            |     | 800 (786) |           |           |           | 845        | 160 | 1 : 21 | 1 : 14 |       |     |              |     |

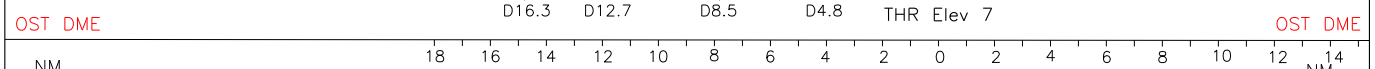
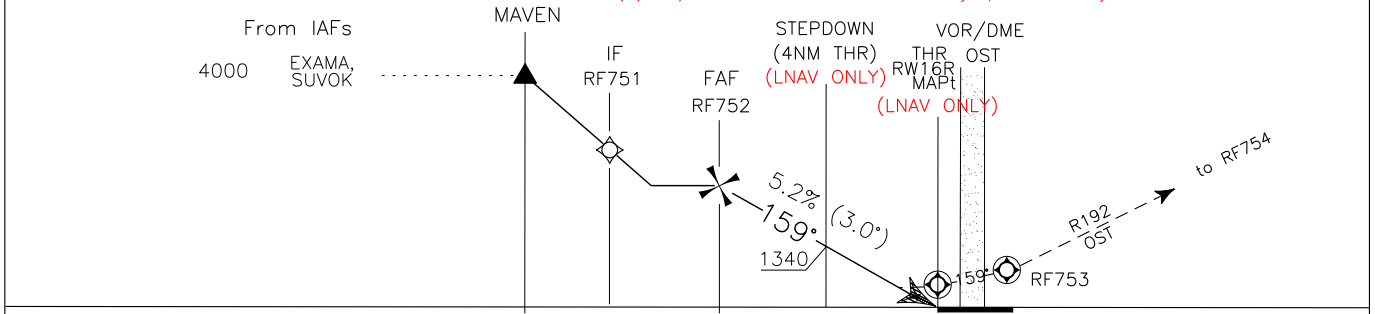
DOC. 8168 ED.6-2014

|                           |   |  |               |                  |                |
|---------------------------|---|--|---------------|------------------|----------------|
| EGNOS<br>CH 46168<br>E16B | APP<br><i>Roma Arrivals</i><br><i>Roma Director</i> | 125.500 (127.950)<br>131.250 (119.200) | AD ELEV<br>14 | L<br>I<br>R<br>F | ROMA/FIUMICINO |
|                           | TWR<br><i>Fiume TWR</i>                             | 118.700 (127.625)                      |               |                  | RNP RWY 16R    |
|                           | ATIS<br><i>Fiume Arrival Information</i>            | 126.125                                |               |                  |                |



CHANGE: NEW MISSED APPROACH REMARK AND RENUMBERED PAGE

TRANSITION ALT 6000 MISSED APPROACH: Proceed on RWY heading 159°, climbing to 3000FT. AT RF 753 (D1.5 after OST DME) turn right on track 192° (RDL 192 OST VOR) bound to RF754.  
 TCH 17.5 M Hold between 19 and 24 NM OST DME. Cross 2000 ft not further than 9 NM OST DME.  
 REMARK: (3)VOR/DME indication not mandatory, provided only as additional information



| OCA(OCH)             |           | A         | B         | C         | D         | FT per MIN | GS     | FAF-THR | DIST       | ALT(HGT)   | MNM  | SECT | ALT ARP |
|----------------------|-----------|-----------|-----------|-----------|-----------|------------|--------|---------|------------|------------|------|------|---------|
| STRAIGHT IN APPROACH |           |           |           |           |           |            |        |         |            |            |      |      |         |
| STRAIGHT IN APPROACH | LPV       | 260 (253) | 260 (253) | 270 (263) | 280 (273) | 425        | 80     | 5 : 42  | 7NM        | 2290(2283) | 25NM | 5800 | ARP     |
|                      | LNAV/VNAV | 300 (293) | 310 (303) | 320 (313) | 330 (323) | 530        | 100    | 4 : 34  | 6NM        | 1970(1963) |      |      |         |
|                      | LNAV      | 420 (406) |           |           |           | 635        | 120    | 3 : 48  | 5NM        | 1655(1648) |      |      |         |
| CIRCLING             | 800 (786) |           | 900 (886) |           | 745       | 140        | 3 : 15 | 4NM     | 1335(1328) |            |      |      |         |
|                      |           |           |           |           | 850       | 160        | 2 : 51 | 3NM     | 1020(1013) |            |      |      |         |
|                      |           |           |           |           |           |            |        |         | 2NM        | 700(693)   |      |      |         |

## Roma Fiumicino RNP RWY 16R – Instrument Approach procedure via SUVOK

| Serial Number | Path Terminator | Waypoint Identifier | Fly Over | Course °M(°T) | Magnetic Variation | Distance (NM) | Turn Direction | Altitude (ft) | Speed Limit (kt) | VPA/ TCH | Navigation Specification |
|---------------|-----------------|---------------------|----------|---------------|--------------------|---------------|----------------|---------------|------------------|----------|--------------------------|
| 010           | IF              | SUVOK               | -        | -             | -                  | -             | -              | +5000         | -                | -        | RNAV1                    |
| 020           | TF              | MAVEN               | -        | 129°(132.4°)  | -                  | 5.0           | -              | +4000         | -                | -        | RNAV1                    |
| 030           | TF              | RF751               | -        | 159°(162.6°)  | -                  | 3.6           | -              | +3000         | -                | -        | RNP APCH                 |
| 040           | TF              | RF752               | -        | 159°(162.6°)  | -                  | 4.2           | -              | 2500          | -                | -        | RNP APCH                 |
| 060           | TF              | RW16R               | Y        | 159°(162.6°)  | -                  | 4.0           | -              |               | -                | 3°/17.5M | RNP APCH                 |
| 070           | CF              | RF753               | Y        | 159°(162.6°)  | 3                  | 2.3           | -              | +450          | -                | -        | RNP APCH                 |
| 080           | CF              | RF754               | -        | 192°(195.0°)  | 3                  | -             | -              | +3000         | -                | -        | RNAV1                    |
| 090           | HM              | RF754               | Y        | 012°(015.0°)  | 3                  | -             | R              | +3000         | -                | -        | RNAV1                    |

## Roma Fiumicino RNP RWY 16R – Instrument Approach procedure via EXAMA

| Serial Number | Path Terminator | Waypoint Identifier | Fly Over | Course °M(°T) | Magnetic Variation | Distance (NM) | Turn Direction | Altitude (ft) | Speed Limit (kt) | VPA/ TCH | Navigation Specification |
|---------------|-----------------|---------------------|----------|---------------|--------------------|---------------|----------------|---------------|------------------|----------|--------------------------|
| 010           | IF              | EXAMA               | -        | -             | -                  | -             | -              | +5000         | -                | -        | RNAV1                    |
| 020           | TF              | MAVEN               | -        | 207°(210.5°)  | -                  | 6.0           | -              | +4000         | -                | -        | RNAV1                    |
| 030           | TF              | RF751               | -        | 159°(162.6°)  | -                  | 3.6           | -              | +3000         | -                | -        | RNP APCH                 |
| 040           | TF              | RF752               | -        | 159°(162.6°)  | -                  | 4.2           | -              | 2500          | -                | -        | RNP APCH                 |
| 060           | TF              | RW16R               | Y        | 159°(162.6°)  | -                  | 4.0           | -              |               | -                | 3°/17.5M | RNP APCH                 |
| 070           | CF              | RF753               | Y        | 159°(162.6°)  | 3                  | 2.3           | -              | +450          | -                | -        | RNP APCH                 |
| 080           | CF              | RF754               | -        | 192°(195.0°)  | 3                  | -             | -              | +3000         | -                | -        | RNAV1                    |
| 090           | HM              | RF754               | Y        | 012°(015.0°)  | 3                  | -             | R              | +3000         | -                | -        | RNAV1                    |

| Path Terminator | Waypoint Name | Inbound Course °M (°T) | Leg Distance (NM) (1) | Timing(min./Waypoint Distance (NM) (2) | Turn Direction | Minimum Altitude (FT) | Maximum Altitude (FL) | Speed Limit (kt) | Magnetic Variation (°) | Navigation Performance  |
|-----------------|---------------|------------------------|-----------------------|--|----------------|-----------------------|-----------------------|------------------|------------------------|-------------------------|
| HM              | EXAMA         | 159 (162)              | 4                     | -/5.5                                  | L              | 4000                  | -                     | 200              | 3                      | RNAV1                   |
| HM              | SUVOK         | 159 (162)              | 3                     | -/4                                    | R              | 4000                  | -                     | 185              | 3                      | RNAV1                   |
| HM              | RF754         | 012°(015.0°)           | 5                     | - / 7.0                                | R              | 3000                  | -                     | -                | 3                      | Conventional/<br>RNAV 1 |

(1) RNAV system with holding functionality

(2) RNAV system without holding functionality

**WAYPOINT LIST  
RNP RWY16R**

| Waypoint Identifier | Coordinates                |
|---------------------|----------------------------|
| RF744               | 42°04'02.3"N 012°16'14.1"E |
| RF751               | 42°00'17.3N 012°08'48.3E   |
| RF752               | 41°56'13.9N 012°10'31.0E   |
| RF753               | 41°46'43.7N 012°14'30.2E   |
| RF754               | 41°29'52.1N 012°07'42.5E   |

**SBAS FAS DATA BLOCK LIRF RNP RWY 16R**

| INPUT DATA                          |               |
|-------------------------------------|---------------|
| PARAMETERS                          | VALUES        |
| Operation Type                      | 0             |
| SBAS Provider                       | 1             |
| Airport Identifier                  | LIRF          |
| Runway                              | 16            |
| Runway Direction                    | 1             |
| Approach Performance Designator     | 0             |
| Route Indicator                     |               |
| Reference Path Data Selector        | 0             |
| Reference Path Identifier           | E16B          |
| LTP/FTP Latitude                    | 414855.8640N  |
| LTP/FTP Longitude                   | 0121334.9135E |
| LTP/FTP Ellipsoidal Height (metres) | 50.1          |
| FPAP Latitude                       | 414652.8815N  |
| Delta FPAP Latitude (seconds)       | -122.9825     |
| FPAP Longitude                      | 0121426.4050E |
| Delta FPAP Longitude (seconds)      | 51.4915       |
| Threshold Crossing Height           | 57.4          |
| TCH Units Selector                  | 0             |
| Glidepath Angle (degrees)           | 3             |
| Course Width (metres)               | 105           |
| Length Offset (metres)              | 744           |
| HAL                                 | 40            |
| VAL                                 | 50            |

| OUTPUT DATA          |  |
|----------------------|--|
| Data Block           | 10 06 12 09 0C 50 00 00 02 36<br>31 05 70 FD F1 11 83 3A 3F 05<br>F5 15 33 3F FC 47 92 01 3E 02<br>2C 01 64 5D C8 FA AC 75 B7 06 |
| Calculated CRC Value | AC75B706   |

Intenzionalmente bianca

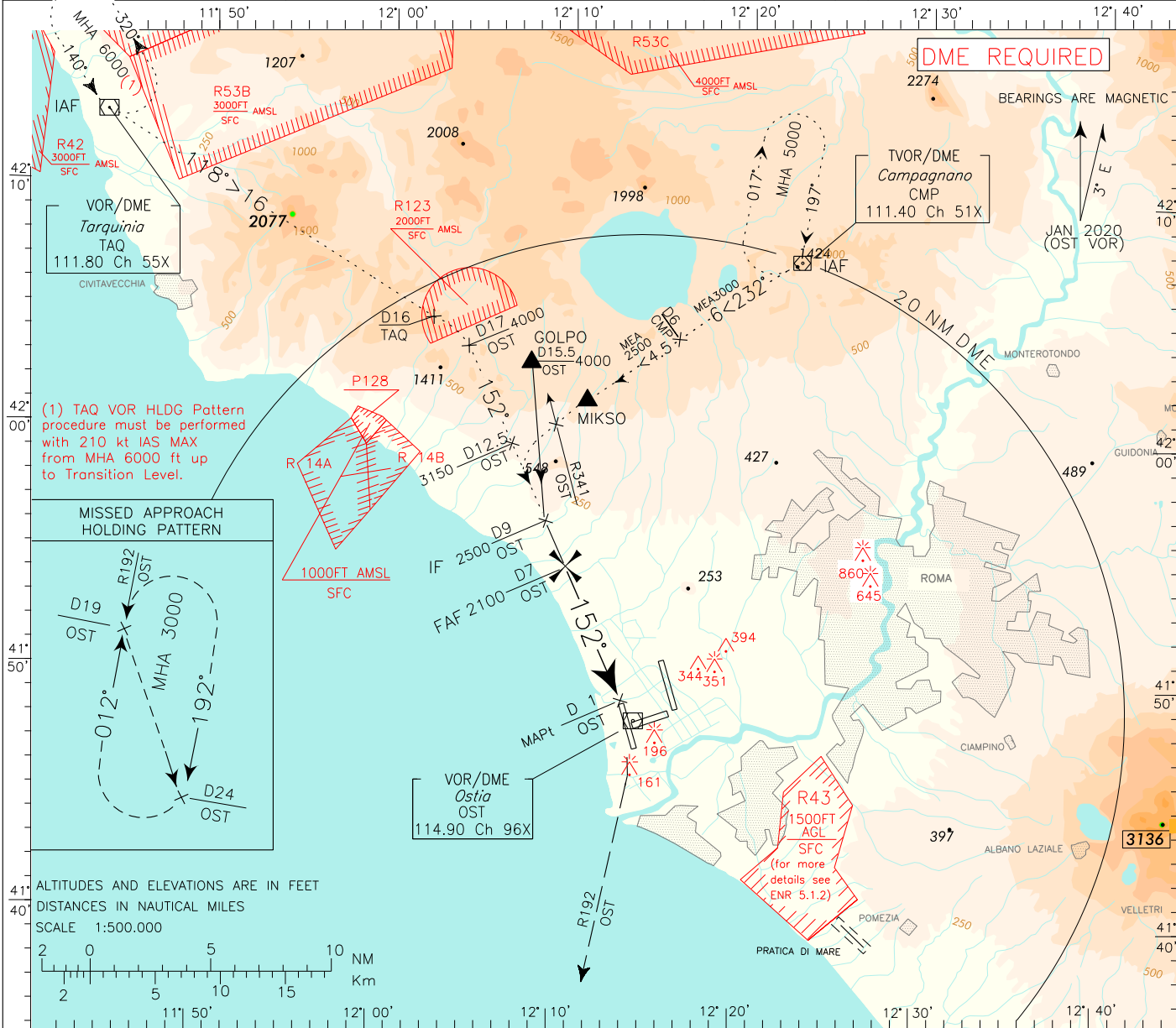
*Intentionally left blank*

DOC. 8168 ED.6-2014 - AMDT7

**REMARK:**  
Final track off set 7'56' from RWY center line.  
RWY center line intercepted 2240 m before THR 16R

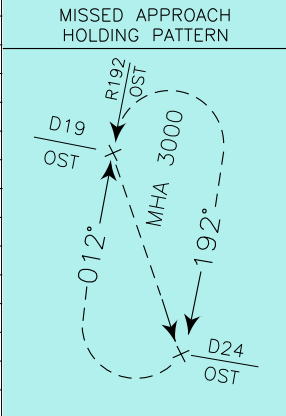
|      |                           |                   |
|------|---------------------------|-------------------|
| APP  | Roma Arrivals             | 125.500 (127.950) |
|      | Roma Director             | 131.250 (119.200) |
| TWR  | Fiume TWR                 | 118.700 (127.625) |
| ATIS | Fiume Arrival Information | 126.125           |

|         |    |      |                               |
|---------|----|------|-------------------------------|
| AD ELEV | 14 | LIRF | ROMA/FIUMICINO<br>VOR RWY 16R |
|         |    |      |                               |

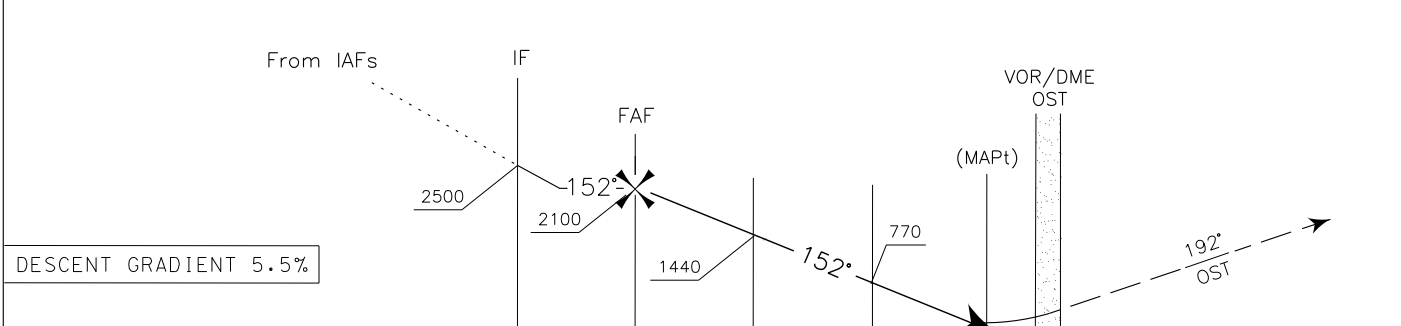


CHANGE: RENUMBERED PAGE

(1) TAQ VOR HLDG Pattern procedure must be performed with 210 kt IAS MAX from MHA 6000 ft up to Transition Level.



TRANSITION ALT 6000 MISSED APPROACH: Turn right to join RDL 192 OST VOR climbing to 3000 ft; cross 2000 ft not further than 9 NM OST DME; hold between 19 and 24 NM OST DME.



|         |     |     |     |     |     |    |    |    |    |    |    |    |    |    |   |            |         |   |   |   |   |   |   |    |
|---------|-----|-----|-----|-----|-----|----|----|----|----|----|----|----|----|----|---|------------|---------|---|---|---|---|---|---|----|
| OST DME | D14 | D13 | D12 | D11 | D10 | D9 | D8 | D7 | D6 | D5 | D4 | D3 | D2 | D1 | 0 | THR Elev 7 | OST DME |   |   |   |   |   |   |    |
| NM      | 16  | 15  | 14  | 13  | 12  | 11 | 10 | 9  | 8  | 7  | 6  | 5  | 4  | 3  | 2 | 1          | 0       | 1 | 2 | 3 | 4 | 5 | 6 | NM |

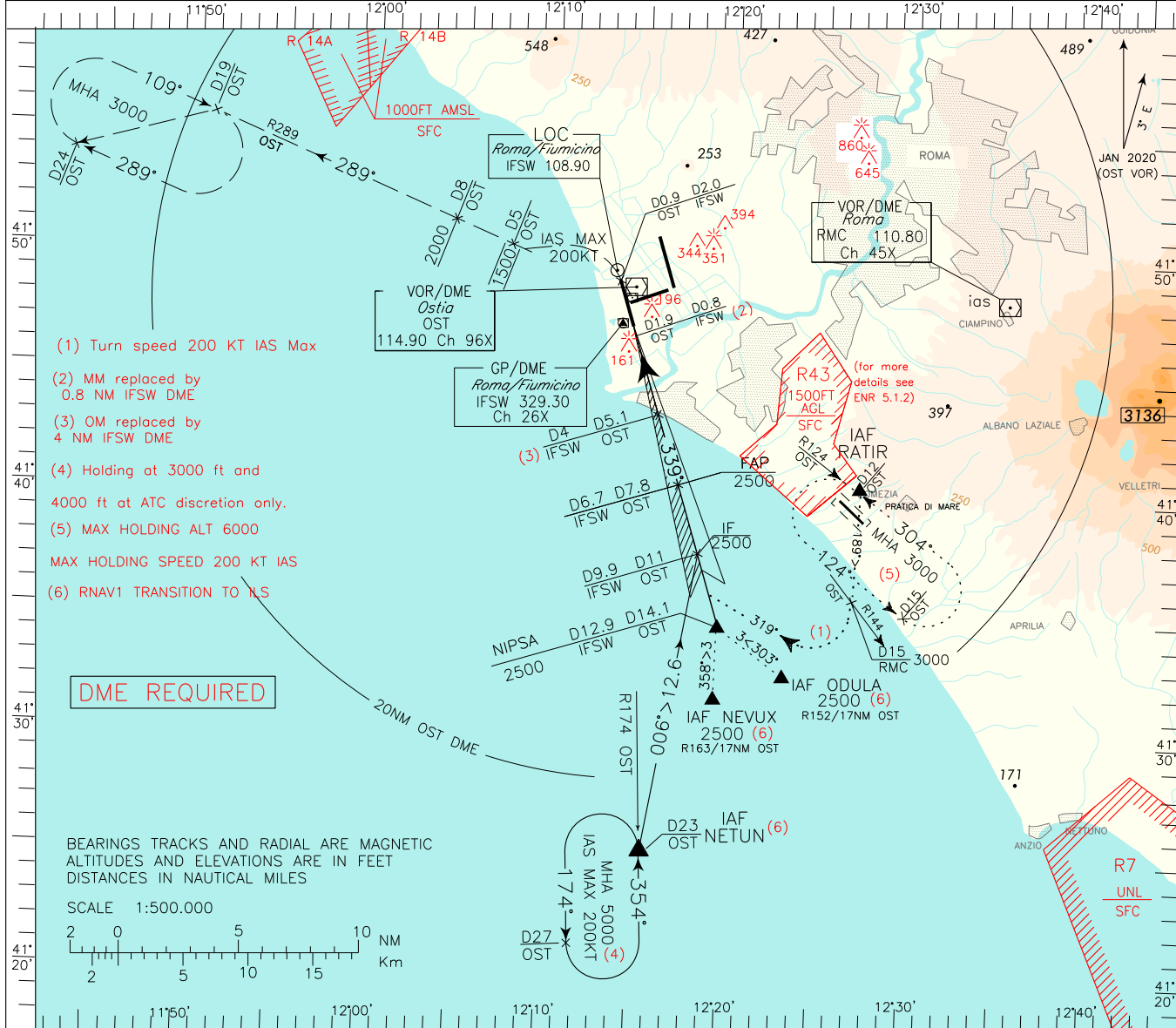
| OCA(OCH)             |     | A         | B | C | D   | FT per MIN | GS     | FAF-MAP | DIST      | ALT (HGT)  | MNM SECT ALT OST |
|----------------------|-----|-----------|---|---|-----|------------|--------|---------|-----------|------------|------------------|
| STRAIGHT IN APPROACH | VOR | 400 (386) |   |   |     |            |        |         |           |            |                  |
|                      |     | CIRCLING  |   |   |     |            |        | 445     | 80        | 4 : 30     | 6 DME            |
| 555                  | 100 |           |   |   |     |            |        | 3 : 36  | 5 DME     | 1432(1425) |                  |
| 670                  | 120 |           |   |   |     |            |        | 3 : 00  | 4 DME     | 1098(1091) |                  |
| 780                  | 140 |           |   |   |     |            |        | 2 : 34  | 3 DME     | 764 (757)  |                  |
|                      |     |           |   |   | 890 | 160        | 2 : 15 | 2 DME   | 430 (423) |            |                  |

DOC. 8168 ED.6-2014 - AMDT 7

WARNING: INDEPENDENT PARALLEL APPROACHES MAY BE EXECUTED

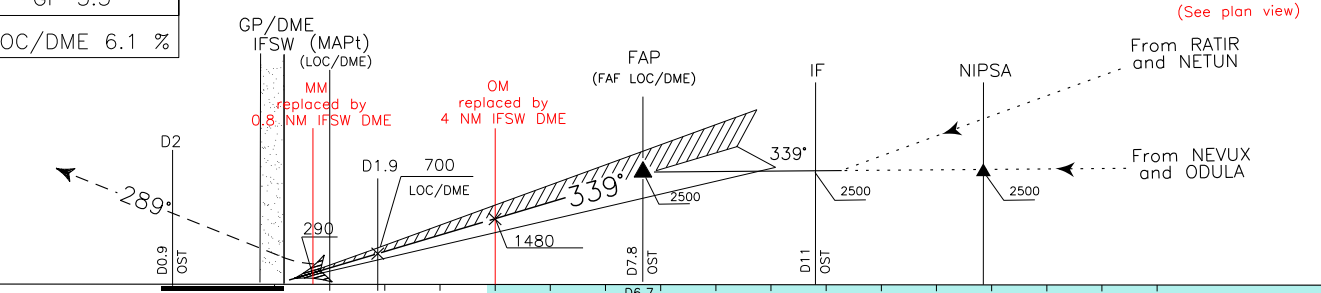
|      |                           |                   |
|------|---------------------------|-------------------|
| APP  | Roma Arrivals             | 125.500 (127.950) |
| TWR  | Roma Director             | 131.250 (119.200) |
|      | Fiume TWR                 | 118.700 (127.625) |
| ATIS | Fiume Arrival Information | 126.125           |

|         |    |      |                                      |
|---------|----|------|--------------------------------------|
| AD ELEV | 14 | LIRF | ROMA/FIUMICINO<br>ILS or LOC RWY 34L |
|         |    |      |                                      |



CHANGE: ROM VOR/DME RENAMED RMC

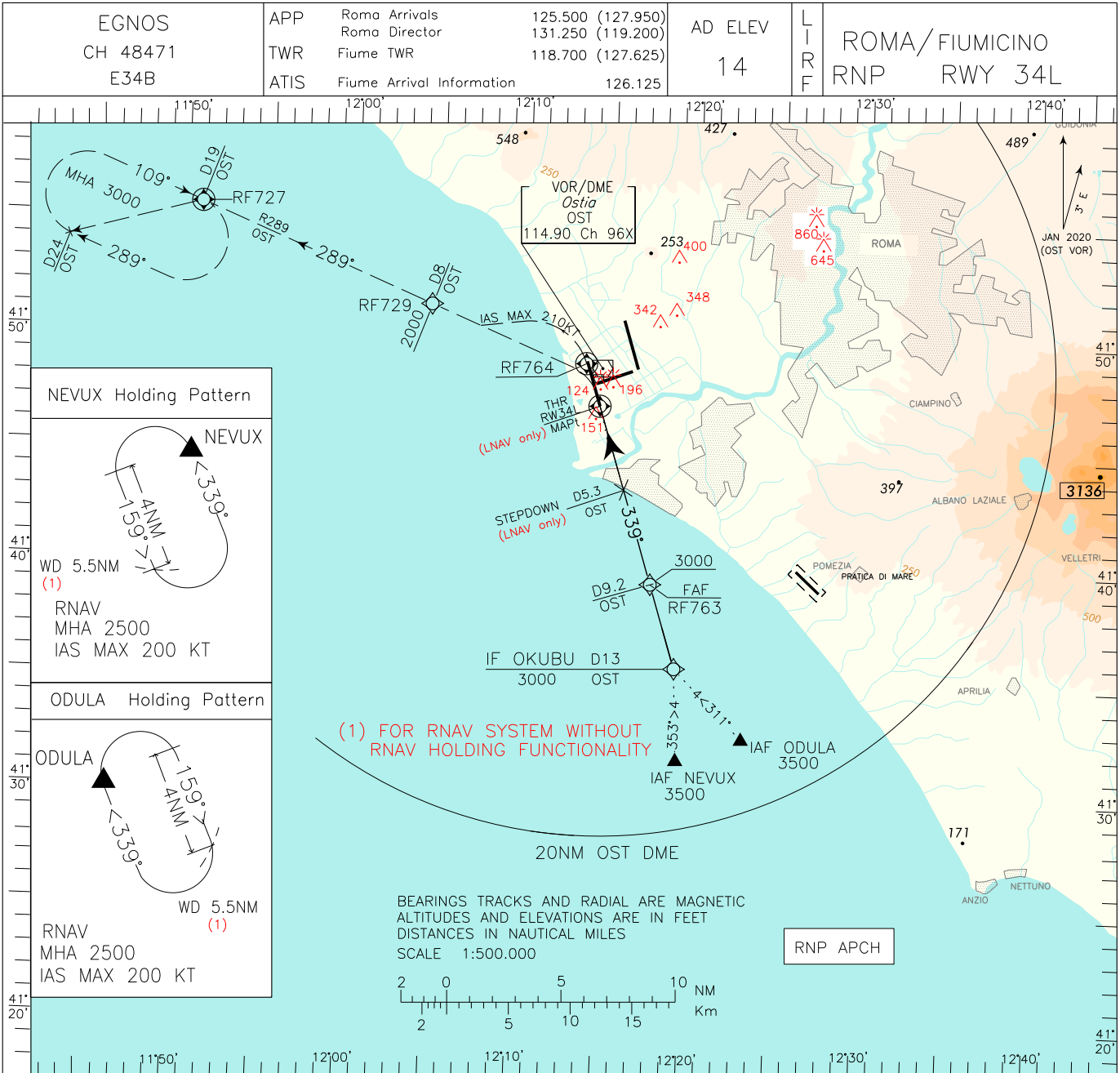
TRANSITION ALT 6000 MISSED APPROACH: Climb to 3000 ft on TR 339°; at 2NM IFSW DME (0.9NM OST DME) turn left (IAS MAX 200KT) to join RDL 289 OST VOR climb and maintain 1500 ft until 5 NM OST DME, then climb to 2000 ft to be reached within 8 NM OST DME. Hold on RDL 289 OST VOR between 19 and 24 NM OST DME at 3000ft. Right turns. (See plan view)



| IFSW DME | THR | Elev | THR | IFSW DME |   |   |   |   |   |   |   |   |   |    |    |    |    |    |    |    |          |
|----------|-----|------|-----|----------|---|---|---|---|---|---|---|---|---|----|----|----|----|----|----|----|----------|
| 4        | 3   | 2    | 1   | 0        | 1 | 2 | 3 | 4 | 5 | 6 | 7 | 8 | 9 | 10 | 11 | 12 | 13 | 14 | 15 | 16 | IFSW DME |

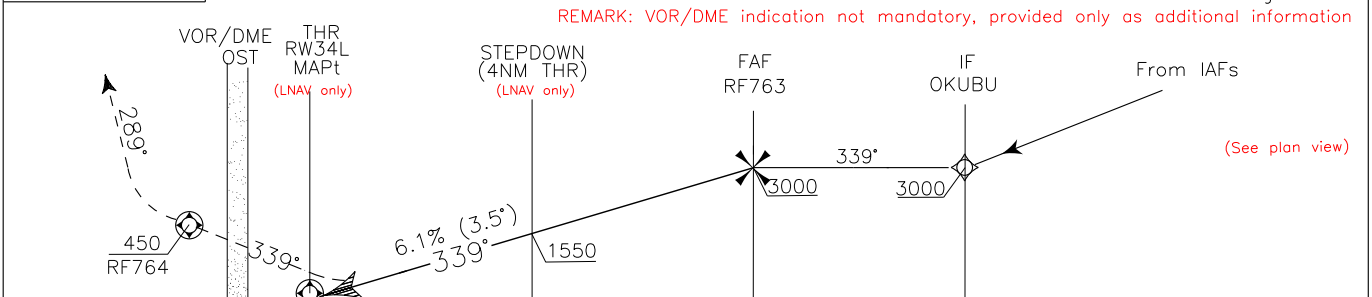
| STRAIGHT IN APPROACH | ILS CAT I | OCA(OCH)  |           |           |           | FT per MIN | GS  | FAP-MAPt |        | MAPt-THR |             | IFSW DME                                  | ALT (HEIGHT) | MNM SECT ALT |
|----------------------|-----------|-----------|-----------|-----------|-----------|------------|-----|----------|--------|----------|-------------|---|--------------|--------------|
|                      |           | A         | B         | C         | D         |            |     | 5.7 NM   | 0.8 NM | 0 : 36   | 0 : 29      |   |              |              |
| CIRCLING             | LOC+DME   | 190 (182) | 204 (196) | 214 (206) | 226 (218) | 494        | 80  | 4 : 16   | 0 : 36 | 5        | 1859 (1851) | OST<br>3700<br>219<br>5800<br>309<br>2300 |              |              |
|                      |           | 400 (386) |           |           |           | 618        | 100 | 3 : 25   | 0 : 29 | 4        | 1488 (1480) |   |              |              |
|                      |           |           |           |           |           | 741        | 120 | 2 : 51   | 0 : 24 | 3        | 1116 (1108) |   |              |              |
|                      |           |           |           |           |           | 865        | 140 | 2 : 27   | 0 : 21 | 2        | 744 (736)   |   |              |              |
| CIRCLING             |           | 800 (786) |           | 900 (886) |           | 988        | 160 | 2 : 08   | 0 : 18 | 1        | 372 (364)   |   |              |              |

DOC. 8168 ED.6-2014 - AMDT7  
CHANGE: NEW MISSED APPROACH REMARK AND RENUMBERED PAGE



TRANSITION ALT 6000  
TCH 17.50 M

**MISSED APPROACH:** Proceed on RWY heading 339°, climb to 3000 ft; at RF764 (450ft or above) turn left to join RDL 289 OST VOR, climbing to 2000 ft to be reached at RF729 (8 NM OST DME).  
Hold on RDL 289 OST VOR between 19 and 24NM OST DME at 3000ft. Right turns.  
**REMARK:** VOR/DME indication not mandatory, provided only as additional information



| OST DME | D1 | D2 | D3 | D4 | D5 | D6 | D7 | D8 | D9 | D10 | D11 | D12 | D13 | D14 | D15 | D16 | OST DME |    |    |    |    |    |
|---------|----|----|----|----|----|----|----|----|----|-----|-----|-----|-----|-----|-----|-----|---------|----|----|----|----|----|
| NM      | 4  | 3  | 2  | 1  | 0  | 1  | 2  | 3  | 4  | 5   | 6   | 7   | 8   | 9   | 10  | 11  | 12      | 13 | 14 | 15 | 16 | NM |

| OCA(OCH)             | A         | B         | C         | D           | FT per MIN | GS          | FAP-MAPt/THR | DIST THR | ALT (HEIGHT) | MNM SECT | ALT ARP |
|----------------------|-----------|-----------|-----------|-------------|------------|-------------|--------------|----------|--------------|----------|---------|
|                      |           |           |           |             |            |             |              |          |              |          |         |
| STRAIGHT IN APPROACH | LPV       | 290 (282) | 300 (292) | 310 (302)   | 320 (312)  | 494         | 80           | 7.9 NM   | 2666 (2658)  | 5800     |         |
|                      |           |           |           |             |            |             |              |          |              |          |         |
|                      | LNAV      | 410 (396) | 4         | 1552 (1544) | 5          | 1923 (1915) |              |          |              |          |         |
|                      |           |           |           |             | 4          | 1180 (1172) |              |          |              |          |         |
|                      |           |           |           |             | 3          | 808 (800)   |              |          |              |          |         |
| CIRCLING             | 800 (786) | 900 (886) | 988       | 160         | 2 : 58     | 2           | 437 (429)    |          |              |          |         |



## Roma Fiumicino RNP RWY 34L – Instrument Approach procedure via ODULA

| Serial Number | Path Terminator | Waypoint Identifier | Fly Over | Course °M(°T) | Magnetic Variation | Distance (NM) | Turn Direction | Altitude (ft) | Speed Limit (kt) | VPA/TCH    | Navigation Specification |
|---------------|-----------------|---------------------|----------|---------------|--------------------|---------------|----------------|---------------|------------------|------------|--------------------------|
| 010           | IF              | ODULA               | -        | -             | -                  | -             | -              | +3500         | -                | -          | RNAV1                    |
| 020           | TF              | OKUBU               | -        | 311°(313.6°)  | -                  | 4.0           | -              | +3000         | -                | -          | RNP APCH                 |
| 030           | TF              | RF763               | -        | 339°(342.6°)  | -                  | 3.8           | -              | +3000         | -                | -          | RNP APCH                 |
| 040           | TF              | RW34L               | Y        | 339°(342.6°)  | -                  | 7.9           | -              | -             | -                | 3.5°/17.5M | RNP APCH                 |
| 050           | CF              | RF764               | Y        | 339°(342.6°)  | 3                  | 2.2           | -              | +450          | -                | -          | RNP APCH                 |
| 060           | CF              | RF729               | -        | 289°(292.6°)  | 3                  | -             | -              | +2000         | 210              | -          | RNP APCH                 |
| 070           | TF              | RF727               | -        | 289°(292.6°)  | -                  | 11.0          | -              | +3000         | -                | -          | RNAV1                    |
| 080           | HM              | RF727               | Y        | 109°(112.6°)  | -                  | -             | R              | +3000         | -                | -          | RNAV1                    |

## Roma Fiumicino RNP RWY 34L – Instrument Approach procedure via NEVUX

| Serial Number | Path Terminator | Waypoint Identifier | Fly Over | Course °M(°T) | Magnetic Variation | Distance (NM) | Turn Direction | Altitude (ft) | Speed Limit (kt) | VPA/TCH    | Navigation Specification |
|---------------|-----------------|---------------------|----------|---------------|--------------------|---------------|----------------|---------------|------------------|------------|--------------------------|
| 010           | IF              | NEVUX               | -        | -             | -                  | -             | -              | +3500         | -                | -          | RNAV1                    |
| 020           | TF              | OKUBU               | -        | 353°(355.6°)  | -                  | 4.0           | -              | +3000         | -                | -          | RNP APCH                 |
| 030           | TF              | RF763               | -        | 339°(342.6°)  | -                  | 3.8           | -              | +3000         | -                | -          | RNP APCH                 |
| 040           | TF              | RW34L               | Y        | 339°(342.6°)  | -                  | 7.9           | -              | -             | -                | 3.5°/17.5M | RNP APCH                 |
| 050           | CF              | RF764               | Y        | 339°(342.6°)  | 3                  | 2.2           | -              | +450          | -                | -          | RNP APCH                 |
| 060           | CF              | RF729               | -        | 289°(292.6°)  | 3                  | -             | -              | +2000         | 210              | -          | RNP APCH                 |
| 070           | TF              | RF727               | -        | 289°(292.6°)  | -                  | 11.0          | -              | +3000         | -                | -          | RNAV1                    |
| 080           | HM              | RF727               | Y        | 109°(112.6°)  | -                  | -             | R              | +3000         | -                | -          | RNAV1                    |

| Path Terminator | Waypoint Name | Inbound Course °M(°T) | Leg Distance (NM) (1) | Timing(min.)/<br>Waypoint Distance (NM) (2) | Turn Direction | Minimum Altitude (FT) | Maximum Altitude (FL) | Speed Limit (kt) | Magnetic Variation (°) | Navigation Performance  |
|-----------------|---------------|-----------------------|-----------------------|---|----------------|-----------------------|-----------------------|------------------|------------------------|-------------------------|
| HM              | NEVUX         | 339 (342.0)           | 4                     | -/5.5                                       | L              | 2500                  | -                     | 200              | 3                      | RNAV1                   |
| HM              | ODULA         | 339 (342.0)           | 4                     | -/5.5                                       | R              | 2500                  | -                     | 200              | 3                      | RNAV1                   |
| HM              | RF727         | 109°(112.6°)          | 5                     | - / 7.0                                     | R              | +3000                 | -                     | -                | 3                      | Conventional/<br>RNAV 1 |

(1) RNAV system with holding functionality

(2) RNAV system without holding functionality

**WAYPOINT LIST  
RNP RWY34L**

| Waypoint Identifier | Coordinates                |
|---------------------|----------------------------|
| RF762               | 41°35'09.2"N 012°25'35.7"E |
| RF763               | 41°39'22.8"N 012°17'34.3"E |
| RF764               | 41°48'58.8"N 012°13'33.7"E |
| RF729               | 41°51'18.2"N 012°04'22.0"E |
| RF727               | 41°55'30.6"N 011°50'45.6"E |

**SBAS FAS DATA BLOCK LIRF RNP RWY 34L**

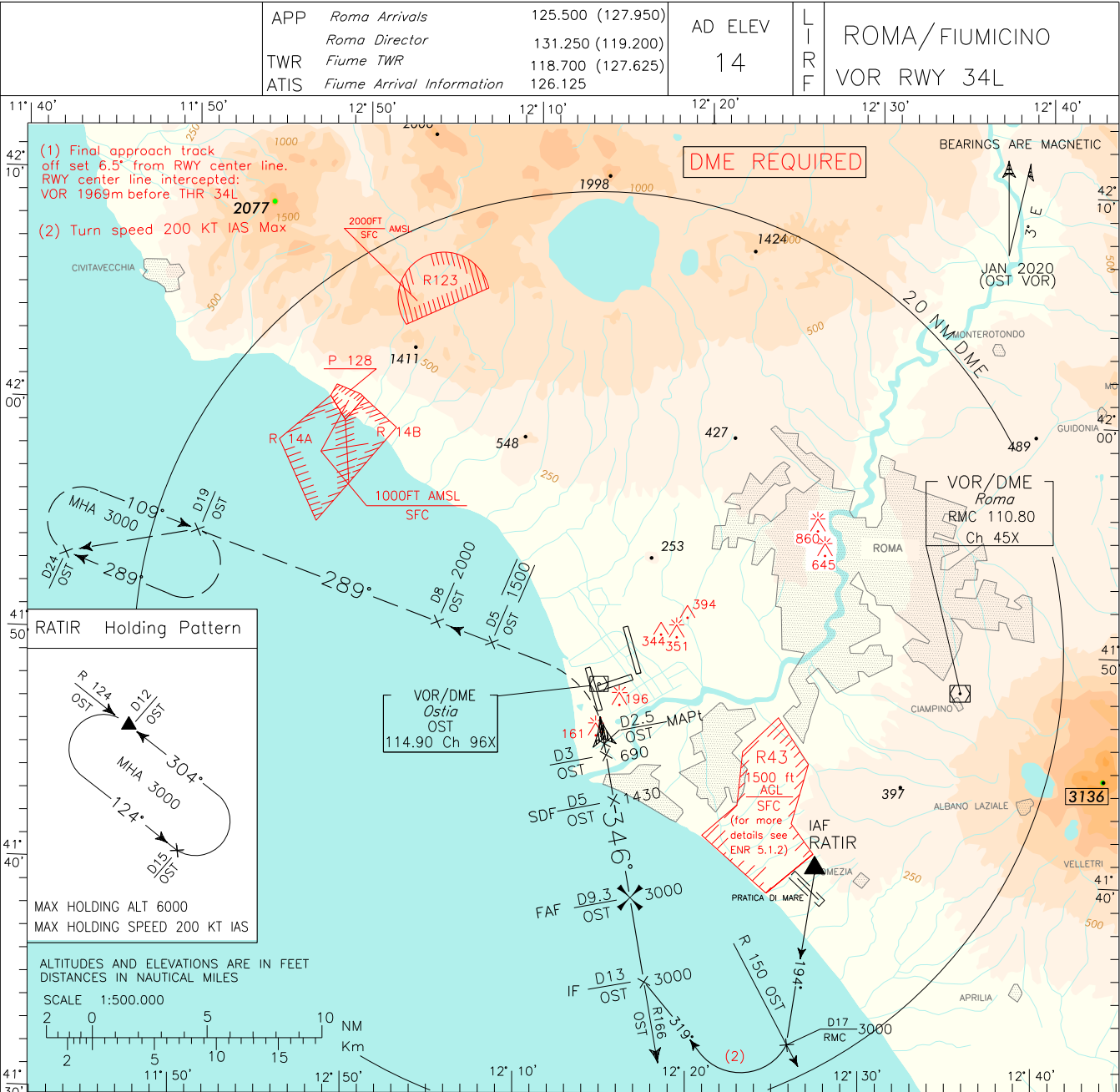
| INPUT DATA                          |               |
|-------------------------------------|---------------|
| PARAMETERS                          | VALUES        |
| Operation Type MAPt                 | 0             |
| SBAS Provider                       | 1             |
| Airport Identifier                  | LIRF          |
| Runway                              | 34            |
| Runway Direction                    | 3             |
| Approach Performance Designator     | 0             |
| Route Indicator                     |               |
| Reference Path Data Selector        | 0             |
| Reference Path Identifier           | E34B          |
| LTP/FTP Latitude                    | 414655.1755N  |
| LTP/FTP Longitude                   | 0121425.4450E |
| LTP/FTP Ellipsoidal Height (metres) | 50,4          |
| FPAP Latitude                       | 414857.4130N  |
| Delta FPAP Latitude (seconds)       | 122.2375      |
| FPAP Longitude                      | 0121334.2650E |
| Delta FPAP Longitude (seconds)      | -51.1800      |
| Threshold Crossing Height           | 17.50         |
| TCH Units Selector                  | 1             |
| Glidepath Angle (degrees)           | 3.50          |
| Course Width (metres)               | 105.00        |
| Length Offset (metres)              | 48            |
| HAL                                 | 40.0          |
| VAL                                 | 50.0          |

| OUTPUT DATA          |  |
|----------------------|--|
| Data Block           | 10 06 12 09 0C E2 00 00 02 34<br>33 05 8F 4E EE 11 4A C5 40 05<br>F8 15 FB BA 03 28 70 FE 5E 81<br>5E 01 64 06 C8 FA F4 23 34 CC |
| Calculated CRC Value | F42334CC   |

Intenzionalmente bianca

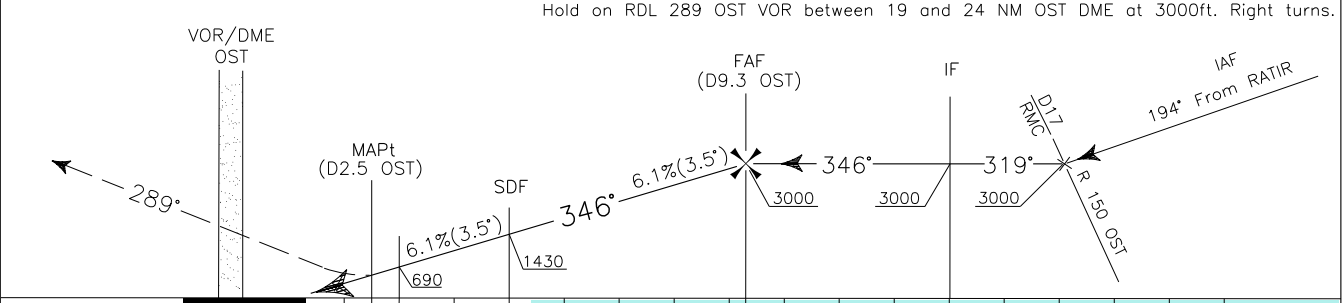
*Intentionally left blank*

DOC. 8168 ED.6-2014 - AMDT7  
CHANGE: ROM VOR/DME RENAMED RMC



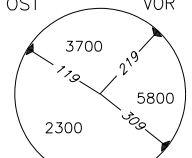
**TRANSITION ALT** 6000

**MISSED APPROACH:** At 2.5 NM OST DME turn left to join RDL 289 OST VOR climbing and maintaining 1500 ft until 5 NM OST DME, then climb to 2000 ft to be reached within 8 NM OST DME. Hold on RDL 289 OST VOR between 19 and 24 NM OST DME at 3000ft. Right turns.

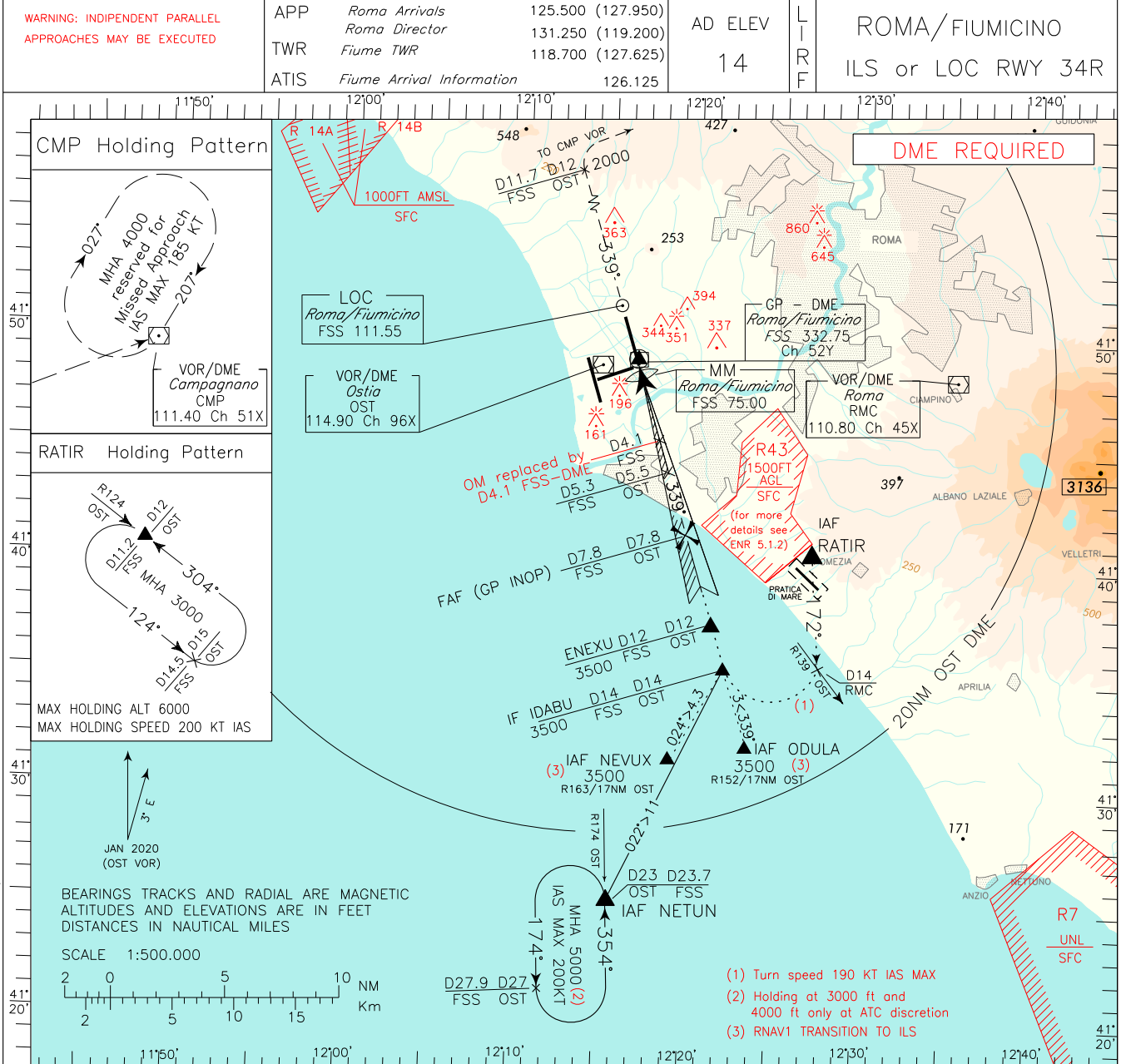


|                |            |    |    |    |    |    |    |    |    |     |     |     |     |     |     |     |     |     |                |    |    |    |    |
|----------------|------------|----|----|----|----|----|----|----|----|-----|-----|-----|-----|-----|-----|-----|-----|-----|----------------|----|----|----|----|
| <b>OST DME</b> | THR Elev 8 | D2 | D3 | D4 | D5 | D6 | D7 | D8 | D9 | D10 | D11 | D12 | D13 | D14 | D15 | D16 | D17 | D18 | <b>OST DME</b> |    |    |    |    |
| NM             | 4          | 3  | 2  | 1  | 0  | 1  | 2  | 3  | 4  | 5   | 6   | 7   | 8   | 9   | 10  | 11  | 12  | 13  | 14             | 15 | 16 | 17 | NM |

| STRAIGHT IN APPROACH | OCA(OCH) |           |           |           | FT per MIN | GS  | FAF-MAPt |        | MAPt-THR |            | OST DME |            | ALT (HGT)  |  | MNM SECT ALT<br>OST VOR |
|----------------------|----------|-----------|-----------|-----------|------------|-----|----------|--------|----------|------------|---------|------------|------------|--|-------------------------|
|                      | VOR+DME  | A         | B         | C         |            |     | D        | 6.8 NM | 1.2 NM   | 8 DME      | 7 DME   | 2540(2532) | 2170(2162) |  |                         |
|                      |          |           | 500 (486) |           | 494        | 80  | 5 : 06   | 0 : 54 | 7 DME    | 2170(2162) |         |            |            |  |                         |
|                      |          |           |           |           | 618        | 100 | 4 : 05   | 0 : 43 | 6 DME    | 1800(1792) |         |            |            |  |                         |
|                      |          |           |           |           | 741        | 120 | 3 : 24   | 0 : 36 | 5 DME    | 1430(1422) |         |            |            |  |                         |
|                      |          |           |           |           | 865        | 140 | 2 : 55   | 0 : 31 | 4 DME    | 1060(1052) |         |            |            |  |                         |
|                      |          |           |           |           | 988        | 160 | 2 : 33   | 0 : 27 | 3 DME    | 690 (682)  |         |            |            |  |                         |
| CIRCLING             |          | 800 (786) |           | 900 (886) |            |     |          |        |          |            |         |            |            |  |                         |

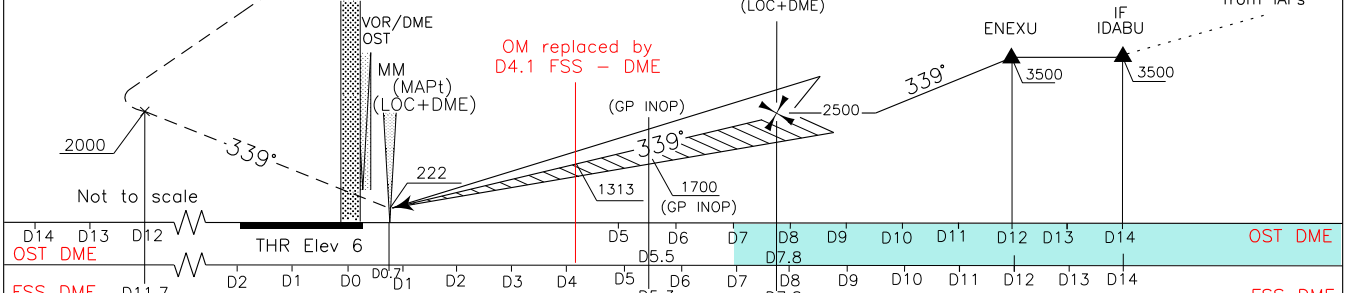


DOC. 8168 ED.6 - 2014 - AMDT 7  
CHANGE: ROM VOR/DME RENAMED RMC



TRANSITION ALT 6000  
**MISSED APPROACH:** Proceed on track 339° climbing to 4000 ft. Cross 12 NM OST DME at 2000 ft or above, then turn right to CMP VOR, to be reached at 4000 ft.

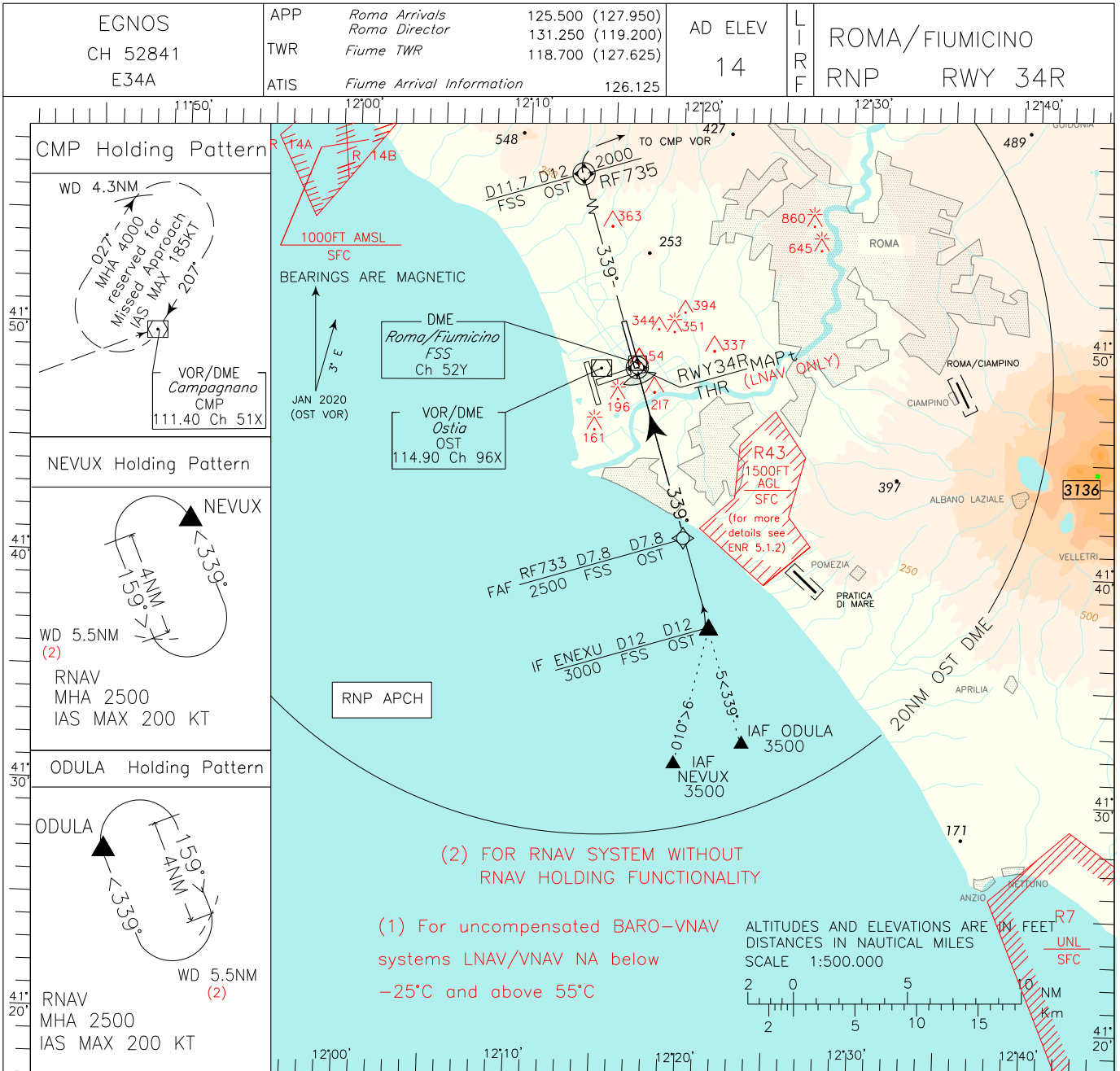
RDH 17.50 M  
 GP 3°  
 LOC+DME 5.2 %



D14 D13 D12 D11.7 D10 D9 D8 D7.8 D7 D6 D5.5 D4 D3 D2 D1 D0 D0.7 D1 D2 D3 D4 D5 D6 D7 D8 D9 D10 D11 D12 D13 D14  
 OST DME FSS DME

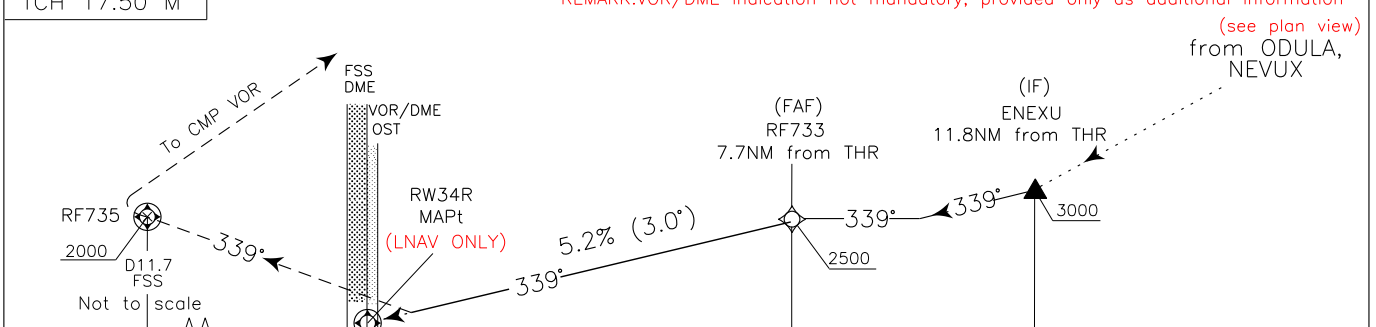
| STRAIGHT IN APPROACH | OCA(OCH)  |           |           |           | FT per MIN | GS  | FAF - D4.1 |        | D4.1 - MM |      | MNM SECT ALT<br>OST VOR |
|----------------------|-----------|-----------|-----------|-----------|------------|-----|------------|--------|-----------|------|-------------------------|
|                      | A         | B         | C         | D         |            |     | 3.7 NM     | 3.4 NM | 3700      | 5800 |                         |
| ILS CAT I            | 206 (200) | 206 (200) | 206 (200) | 206 (200) | 425        | 80  | 2 : 47     | 2 : 33 |           |      |                         |
| LOC+DME              | 420 (414) |           |           |           | 530        | 100 | 2 : 13     | 2 : 02 |           |      |                         |
|                      |           |           |           |           | 635        | 120 | 1 : 51     | 1 : 42 |           |      |                         |
|                      |           |           |           |           | 745        | 140 | 1 : 35     | 1 : 27 |           |      |                         |
| CIRCLING             | 800 (786) |           | 900 (886) |           | 850        | 160 | 1 : 23     | 1 : 17 |           |      |                         |

CHANCE: NEW MISSED APPROACH REMARK AND RENUMBERED PAGE



TRANSITION ALT 6000  
TCH 17.50 M

MISSED APPROACH: Proceed on TR 339° climbing to 4000 ft. At RF735 (12 NM OST DME/11.7 NM FSS DME) at 2000 ft or above, turn right to CMP VOR, to be reached at 4000 ft.  
REMARK: VOR/DME indication not mandatory, provided only as additional information (see plan view) from ODULA, NEVUX



|         |     |     |     |     |     |    |    |    |    |    |    |    |    |    |    |    |    |    |    |    |    |    |    |    |     |     |     |     |     |     |     |         |
|---------|-----|-----|-----|-----|-----|----|----|----|----|----|----|----|----|----|----|----|----|----|----|----|----|----|----|----|-----|-----|-----|-----|-----|-----|-----|---------|
| OST DME | D14 | D13 | D12 | D11 | D10 | D9 | D8 | D7 | D6 | D5 | D4 | D3 | D2 | D1 | D0 | D1 | D2 | D3 | D4 | D5 | D6 | D7 | D8 | D9 | D10 | D11 | D12 | D13 | D14 | D15 | D16 | FSS DME |
|---------|-----|-----|-----|-----|-----|----|----|----|----|----|----|----|----|----|----|----|----|----|----|----|----|----|----|----|-----|-----|-----|-----|-----|-----|-----|---------|

| OCA(OCH)             |           | A         | B         | C         | D         | FT per MIN | GS     | FAF - THR | DIST THR | ALT (HGT)   | MNM SECT ALT         |
|----------------------|-----------|-----------|-----------|-----------|-----------|------------|--------|-----------|----------|-------------|----------------------|
| STRAIGHT IN APPROACH | LPV       | 256 (250) | 256 (250) | 256 (250) | 260 (254) | 425        | 80     | 7.6 NM    | 7        | 2292 (2286) | 25 NM<br>ARP<br>5800 |
|                      | LNAV/VNAV | 360 (354) | 370 (364) | 380 (374) | 390 (384) | 530        | 100    | 5 : 42    | 6        | 1973 (1967) |                      |
|                      |           | 360 (354) | 370 (364) | 380 (374) | 390 (384) | 635        | 120    | 4 : 34    | 5        | 1654 (1648) |                      |
|                      | LNAV      | 490 (484) | 490 (484) | 490 (484) | 490 (484) | 745        | 140    | 3 : 48    | 4        | 1336 (1330) |                      |
| CIRCLING             | 800 (786) | 800 (786) | 800 (786) | 800 (786) | 850       | 160        | 3 : 16 | 2         | 3        | 1018 (1012) |                      |
|                      |           |           |           |           |           |            |        |           |          |             | 900 (886)            |
|                      |           |           |           |           |           |            |        | 1         |          | 381 (375)   |                      |

## Roma Fiumicino RNP RWY 34R – Instrument Approach procedure via NEVUX

| Serial Number | Path Terminator | Waypoint Identifier | Fly Over | Course °M(°T) | Magnetic Variation | Distance (NM) | Turn Direction | Altitude (ft) | Speed Limit (kt) | VPA/TCH  | Navigation Specification |
|---------------|-----------------|---------------------|----------|---------------|--------------------|---------------|----------------|---------------|------------------|----------|--------------------------|
| 010           | IF              | NEVUX               | -        | -             | -                  | -             | -              | +3500         | -                | -        | RNAV1                    |
| 020           | TF              | ENEXU               | -        | 010°(013.4°)  | -                  | 6.0           | -              | +3000         | -                | -        | RNP APCH                 |
| 030           | TF              | RF733               | -        | 339°(342.7°)  | -                  | 4.2           | -              | +2500         | -                | -        | RNP APCH                 |
| 040           | TF              | RW34R               | Y        | 339°(342.7°)  | -                  | 7.7           | -              |               | -                | 3°/17.5M | RNP APCH                 |
| 050           | CF              | RF735               | Y        | 339°(342.7°)  | 3                  | 11.9          | -              | +2000         | -                | -        | RNP APCH                 |
| 060           | DF              | CMP                 | -        | -             | -                  | -             | R              | +4000         | 185              | -        | RNAV1                    |
| 070           | HM              | CMP                 | Y        | 207°(210.1°)  | 3                  | -             | R              | +4000         | 185              | -        | RNAV1                    |

## Roma Fiumicino RNP RWY 34R – Instrument Approach procedure via ODULA

| Serial Number | Path Terminator | Waypoint Identifier | Fly Over | Course °M(°T) | Magnetic Variation | Distance (NM) | Turn Direction | Altitude (ft) | Speed Limit (kt) | VPA/TCH  | Navigation Specification |
|---------------|-----------------|---------------------|----------|---------------|--------------------|---------------|----------------|---------------|------------------|----------|--------------------------|
| 010           | IF              | ODULA               | -        | -             | -                  | -             | -              | +3500         | -                | -        | RNAV1                    |
| 020           | TF              | ENEXU               | -        | 339°(342.7°)  | -                  | 5.0           | -              | +3000         | -                | -        | RNP APCH                 |
| 030           | TF              | RF733               | -        | 339°(342.7°)  | -                  | 4.2           | -              | +2500         | -                | -        | RNP APCH                 |
| 040           | TF              | RW34R               | Y        | 339°(342.7°)  | -                  | 7.7           | -              |               | -                | 3°/17.5M | RNP APCH                 |
| 050           | CF              | RF735               | Y        | 339°(342.7°)  | 3                  | 11.9          | -              | +2000         | -                | -        | RNP APCH                 |
| 060           | DF              | CMP                 | -        | -             | -                  | -             | R              | +4000         | 185              | -        | RNAV1                    |
| 070           | HM              | CMP                 | Y        | 207°(210.1°)  | 3                  | -             | R              | +4000         | 185              | -        | RNAV1                    |

| Path Terminator | Waypoint Name | Inbound Course °M (°T) | Leg Distance (NM) (1) | Timing(min.)/Waypoint Distance (NM) (2) | Turn Direction | Minimum Altitude (FT) | Maximum Altitude (FL) | Speed Limit (kt) | Magnetic Variation (°) | Navigation Performance |
|-----------------|---------------|------------------------|-----------------------|---|----------------|-----------------------|-----------------------|------------------|------------------------|------------------------|
| HM              | NEVUX         | 339 (342.0)            | 4                     | -/5.5                                   | L              | 2500                  | -                     | 200              | 3                      | RNAV1                  |
| HM              | ODULA         | 339 (342.0)            | 4                     | -/5.5                                   | R              | 2500                  | -                     | 200              | 3                      | RNAV1                  |
| HM              | CMP           | 207° (210.1°)          | -                     | - / 4.3                                 | R              | 4000                  | -                     | 185              | 3                      | RNAV 1                 |

(1) RNAV system with holding functionality

(2) RNAV system without holding functionality

**WAYPOINT LIST  
RNP RWY34R**

| Waypoint Identifier | Coordinates              |
|---------------------|--------------------------|
| RF731               | 41°36'22.2N 012°27'28.3E |
| RF733               | 41°41'26.3N 012°19'34.9E |
| RF735               | 42°00'04.9N 012°11'46.6E |

**SBAS FAS DATA BLOCK LIRF RNP RWY 34R  
Input data**

|                                     |               |
|-------------------------------------|---------------|
| Operation Type                      | 0             |
| SBAS Provider                       | 1             |
| Airport Identifier                  | LIRF          |
| Runway                              | 34            |
| Runway Direction                    | 1             |
| Approach Performance Designator     | 0             |
| Route Indicator                     |               |
| Reference Path Data Selector        | 0             |
| Reference Path Identifier           | E34A          |
| LTP/FTP Latitude                    | 414844.7950N  |
| LTP/FTP Longitude                   | 0121631.8910E |
| LTP/FTP Ellipsoidal Height (metres) | 49.8          |
| FPAP Latitude                       | 415048.7245N  |
| Delta FPAP Latitude (seconds)       | 123.9295      |
| FPAP Longitude                      | 0121540.0265E |
| Delta FPAP Longitude (seconds)      | -51.8645      |
| Threshold Crossing Height           | 57.4          |
| TCH Units Selector                  | 0             |
| Glidepath Angle (degrees)           | 3.00          |
| Course Width (metres)               | 105.00        |
| Length Offset (metres)              | 104           |
| HAL (metres)                        | 40.0          |
| VAL (metres)                        | 50.0          |

**Output data**

|                      |  |
|----------------------|--|
| Data Block           | 10 06 12 09 0C 62 00 00 01 34<br>33 05 F6 A6 F1 11 26 A1 44 05<br>F2 15 33 C8 03 CF 6A FE 3E 02<br>2C 01 64 0D C8 FA 83 E1 02 1D |
| Calculated CRC Value | 83E1021D   |



Intenzionalmente bianca

*Intentionally left blank*

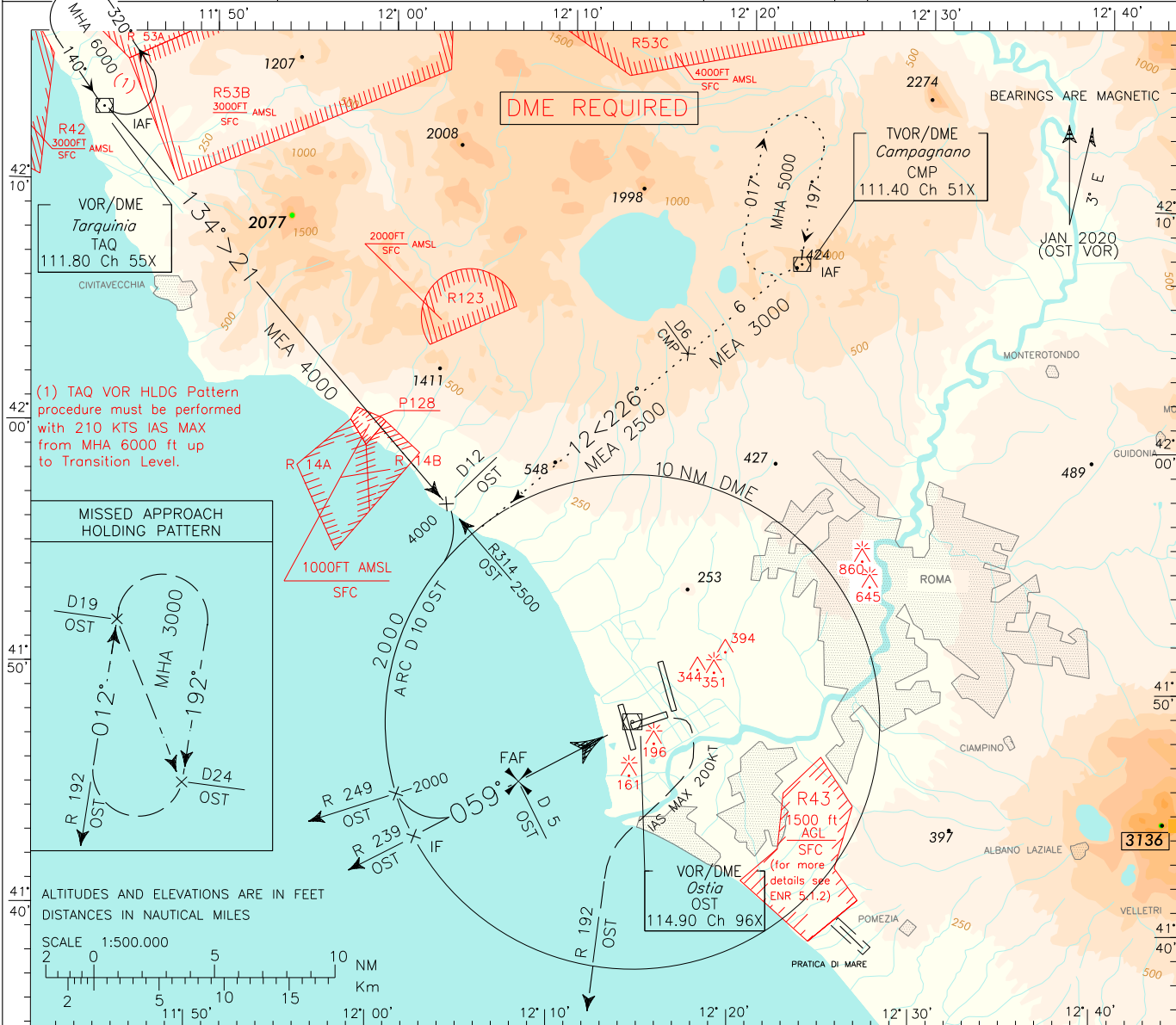
ICAO – INSTRUMENT APPROACH CHART

AD 2 LIRF 5-35

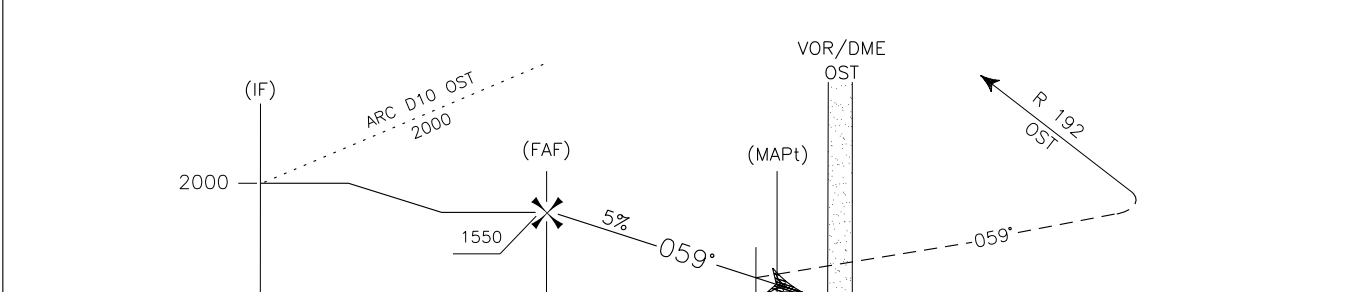
DOC. 8168 ED.6-2014 - AMDT7

CHANGE: RENUMBERED PAGE

|      |                           |                   |         |    |      |                |
|------|---------------------------|-------------------|---------|----|------|----------------|
| APP  | Roma Arrivals             | 125.500 (127.950) | AD ELEV | 14 | LIRF | ROMA/FIUMICINO |
|      | Roma Director             | 131.250 (119.200) |         |    |      |                |
| TWR  | Fiume TWR                 | 118.700 (127.625) |         |    |      |                |
| ATIS | Fiume Arrival Information | 126.125           |         |    |      |                |
|      |                           |                   |         |    | VOR  | RWY 07         |



TRANSITION ALT 6000 MISSED APPROACH: 1 NM before OST DME climb to 500 ft on TR 059°; then turn right on RDL 192 OST VOR climbing to 2000 ft, to be reached within 9 NM OST DME, then continue climbing to 3000 ft. Hold on RDL 192 OST VOR between 19 and 24 NM OST DME. Right turns. IAS MAX 200 kt during turn.



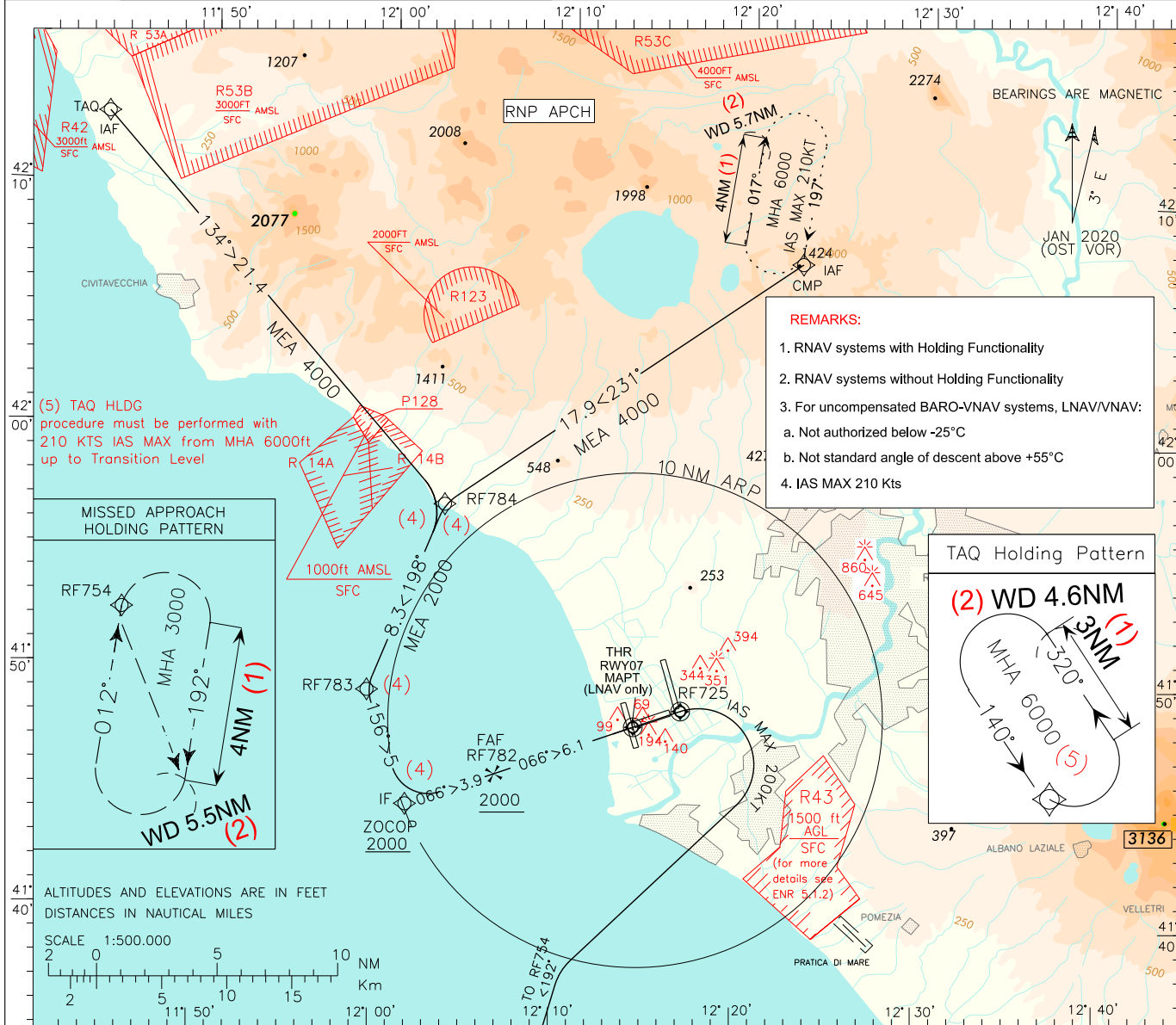
|         |     |    |    |    |    |    |            |         |   |   |   |   |   |   |   |   |   |   |   |   |   |   |   |    |
|---------|-----|----|----|----|----|----|------------|---------|---|---|---|---|---|---|---|---|---|---|---|---|---|---|---|----|
| OST DME | D10 | D5 | D4 | D3 | D2 | D1 | THR Elev 7 | OST DME |   |   |   |   |   |   |   |   |   |   |   |   |   |   |   |    |
| NM      | 13  | 12 | 11 | 10 | 9  | 8  | 7          | 6       | 5 | 4 | 3 | 2 | 1 | 0 | 1 | 2 | 3 | 4 | 5 | 6 | 7 | 8 | 9 | NM |

| STRAIGHT IN APPROACH | OCA(OCH)  |   |           |   | FT per MIN | GS  | FAF-MAP |       | DIST       | ALT (HGT) | MNM SECT ALT VOR |
|----------------------|-----------|---|-----------|---|------------|-----|---------|-------|------------|-----------|------------------|
|                      | A         | B | C         | D |            |     | 4 NM    |       |            |           |                  |
| VOR                  | 400 (386) |   |           |   | 405        | 80  | 3 : 00  | 5 DME | 1550(1543) |           |                  |
|                      |           |   |           |   | 505        | 100 | 2 : 24  | 4 DME | 1250(1243) |           |                  |
|                      |           |   |           |   | 610        | 120 | 2 : 00  | 3 DME | 950 (943)  |           |                  |
|                      |           |   |           |   | 710        | 140 | 1 : 43  | 2 DME | 650 (643)  |           |                  |
| CIRCLING             | 800 (786) |   | 900 (886) |   | 810        | 160 | 1 : 30  |       |            |           |                  |

|                        |      |                           |                   |               |      |                              |
|------------------------|------|---------------------------|-------------------|---------------|------|------------------------------|
| EGNOS CH 72314<br>E07A | APP  | Roma Arrivals             | 125.500 (127.950) | AD ELEV<br>14 | LIRF | ROMA/FIUMICINO<br>RNP RWY 07 |
|                        |      | Roma Director             | 131.250 (119.200) |               |      |                              |
|                        | TWR  | Fiume TWR                 | 118.700 (127.625) |               |      |                              |
|                        | ATIS | Fiume Arrival Information | 126.125           |               |      |                              |

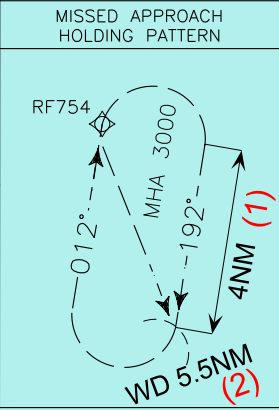
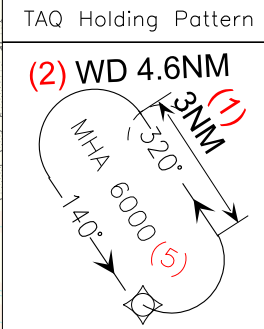
DOC. 8168 ED.6-2014 AMDT 7

CHANGE: RENUMBERED PAGE



**REMARKS:**

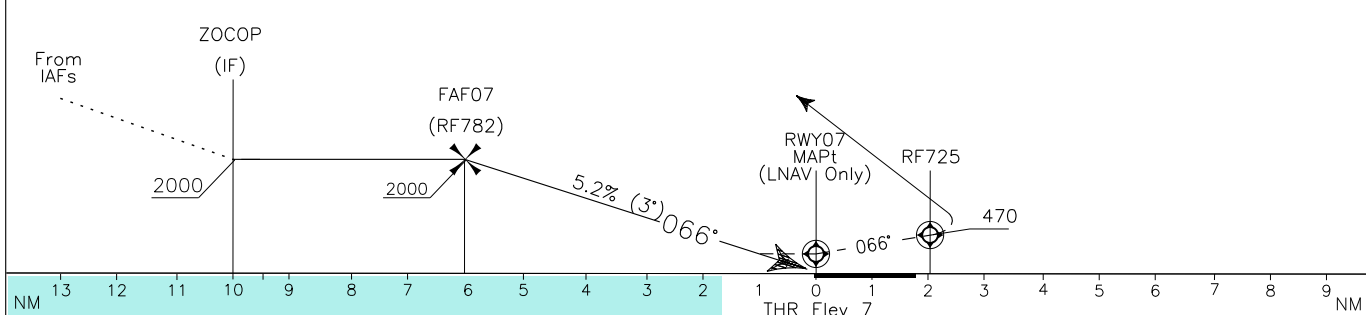
1. RNAV systems with Holding Functionality
2. RNAV systems without Holding Functionality
3. For uncompensated BARO-VNAV systems, LNAV/MNAV:
  - a. Not authorized below -25°C
  - b. Not standard angle of descent above +55°C
4. IAS MAX 210 Kts



TRANSITION ALT 6000

TCH 15.0M

MISSED APPROACH: Continue RWY heading climbing to 3000ft. Over RF725 turn right (IAS MAX 200kt) to join and follow track 192 bound to RF754 to join Missed Approach Holding Pattern



| OCA(OCH)             |           | A         | B         | C         | D         | FT per MIN | GS | FAF-MAP     | DIST THRO7 | ALT (HGT) | MNM SECT ALT ARP |
|----------------------|-----------|-----------|-----------|-----------|-----------|------------|----|-------------|------------|-----------|------------------|
| STRAIGHT IN APPROACH | LPV       | 260 (253) |           |           |           |            |    |             |            |           |                  |
|                      | LNAV/VNAV | 332 (325) | 346 (339) | 354 (347) | 365 (358) | 4 : 35     | 5  | 1649(1642)  |            |           |                  |
|                      | LNAV      | 480 (473) |           |           |           | 3 : 39     | 4  | 1330 (1323) |            |           |                  |
|                      |           |           |           |           |           | 3 : 03     | 3  | 1012 (1005) |            |           |                  |
|                      |           |           |           |           |           | 2 : 37     | 2  | 693 (686)   |            |           |                  |
|                      |           |           |           |           |           | 2 : 17     | 1  | 377 (370)   |            |           |                  |
| CIRCLING             |           | 800 (786) |           | 900 (886) |           |            |    |             |            |           |                  |

## TABULAR DESCRIPTION

## RNP RWY 07 – Instrument Approach procedure

| Serial Number | Path Terminator | Waypoint Identifier | Fly Over | Course °M(°T) | Magnetic Variation | Distance (NM) | Turn Direction | Altitude (ft) | Speed Limit (kt) | VPA/TCH | Navigation Specification |
|---------------|-----------------|---------------------|----------|---------------|--------------------|---------------|----------------|---------------|------------------|---------|--------------------------|
| 010           | IF              | TAQ                 | -        | -             | -                  | -             | -              | +6000         | 210 (3)          | -       | RNP APCH                 |
| 020           | TF              | RF784               | -        | 134° (137.5°) | -                  | 21.4          | -              | +4000         | 210              | -       | RNP APCH                 |
| 030           | TF              | RF783               | -        | 198° (201.0°) | -                  | 8.3           | -              | +2000         | -                | -       | RNP APCH                 |
| 040           | TF              | ZOCOP               | -        | 156° (159.7°) | -                  | 5.0           | -              | +2000         | 210              | -       | RNP APCH                 |
| 010           | IF              | CMP                 | -        | -             | -                  | -             | -              | -             | 210              | -       | RNP APCH                 |
| 020           | TF              | RF784               | -        | 231° (234.6°) | -                  | 17.9          | -              | +4000         | 210              | -       | RNP APCH                 |
| 030           | TF              | RF783               | -        | 198° (201.0°) | -                  | 8.3           | -              | +2000         | -                | -       | RNP APCH                 |
| 040           | TF              | ZOCOP               | -        | 156° (159.7°) | -                  | 5.0           | -              | +2000         | 210              | -       | RNP APCH                 |
| 050           | TF              | RF782               | -        | 066° (069.7°) | -                  | 3.9           | -              | +2000         | -                | -       | RNP APCH                 |
| 060           | TF              | RWY07               | Y        | 066° (069.6°) | -                  | 6.1           | -              | -             | -                | 3°/15   | RNP APCH                 |
| 070           | CF              | RF725               | Y        | 066° (069.7°) | 3                  | 2.1           | -              | +470          | 200              | -       | RNP APCH                 |
| 080           | CF              | RF754               | -        | 192° (195.0°) | 3                  | -             | R              | +3000         | 200              | -       | RNP APCH                 |
| 090           | HM              | RF754               | Y        | 012° (015.0°) | 3                  | -             | R              | +3000         | 230              | -       | RNAV1                    |

| Path Terminator | Waypoint Identifier | Inbound Course °M (°T) | Leg Distance (NM) (1) | Timing(min.)/ Waypoint Distance (NM) (2) | Turn Direction | Minimum Altitude (FT) | Maximum Altitude (FL) | Speed Limit (kt) | Magnetic Variation (°) | Navigation Specification |
|-----------------|---------------------|------------------------|-----------------------|--|----------------|-----------------------|-----------------------|------------------|------------------------|--------------------------|
| HM              | TAQ                 | 140° (143°)            | 3.0                   | - / 4.6                                  | L              | +6000                 | -                     | 210 (3)          | 3                      | RNAV1                    |
| HM              | CMP                 | 197° (200°)            | 4.0                   | - / 5.7                                  | R              | +6000                 | -                     | 210              | 3                      | RNAV1                    |
| HM              | RF754               | 012° (015°)            | 4.0                   | - / 5.5                                  | R              | +3000                 | -                     | 230              | 3                      | RNAV1                    |

(1) RNAV system with holding functionality

(2) RNAV system without holding functionality

(3) TAQ Holding Procedure must be performed with 210Kts IAS MAX from MHA up to Transition Level

## WAYPOINT LIST

## RNP RWY 07

| Waypoint Identifier | Coordinates                  |
|---------------------|------------------------------|
| RF725               | 41°48'44.9"N – 012°16'47.1"E |
| RF754               | 41°29'52.1"N – 012°07'42.5"E |
| RF782               | 41°45'54.9"N – 012°06'33.8"E |
| RF783               | 41°49'15.4"N – 011°59'21.3"E |
| RF784               | 41°57'02.9"N – 012°03'21.3"E |

## SBAS FAS DATA BLOCK LIRF RNP RWY 07

## Input data

|                                     |               |
|-------------------------------------|---------------|
| Operation Type                      | 0             |
| SBAS Provider                       | 1             |
| Airport Identifier                  | LIRF          |
| Runway                              | 07            |
| Runway Direction                    | 0             |
| Approach Performance Designator     | 0             |
| Route Indicator                     |               |
| Reference Path Data Selector        | 0             |
| Reference Path Identifier           | E07A          |
| LTP/FTP Latitude                    | 414802.2200N  |
| LTP/FTP Longitude                   | 0121412.5500E |
| LTP/FTP Ellipsoidal Height (metres) | 50.0          |
| FPAP Latitude                       | 414834.6600N  |
| Delta FPAP Latitude (seconds)       | 32.4400       |
| FPAP Longitude                      | 0121610.1100E |
| Delta FPAP Longitude (seconds)      | 117.5600      |
| Threshold Crossing Height           | 15.0          |
| TCH Units Selector                  | 1             |
| Glidepath Angle (degrees)           | 3.00          |
| Course Width (metres)               | 105.00        |
| Length Offset (metres)              | 0             |
| HAL (metres)                        | 40.0          |
| VAL (metres)                        | 35.0          |

## Output data

|                      |  |
|----------------------|--|
| Data Block           | 10 06 12 09 0C 07 00 00 01 37<br>30 05 58 5A F0 11 8C 60 40 05<br>F4 15 70 FD 00 70 96 03 2C 81<br>2C 01 64 00 C8 AF 05 AD BE 3C |
| Calculated CRC Value | 05ADBE3C   |

## Required Additional Data

|                                     |     |
|-------------------------------------|-----|
| ICAO Code                           | LI  |
| LTP/FTP Orthometric Height (metres) | 2.1 |
| FPAP Orthometric Height (metres)    | 2.4 |

Intenzionalmente bianca

*Intentionally left blank*

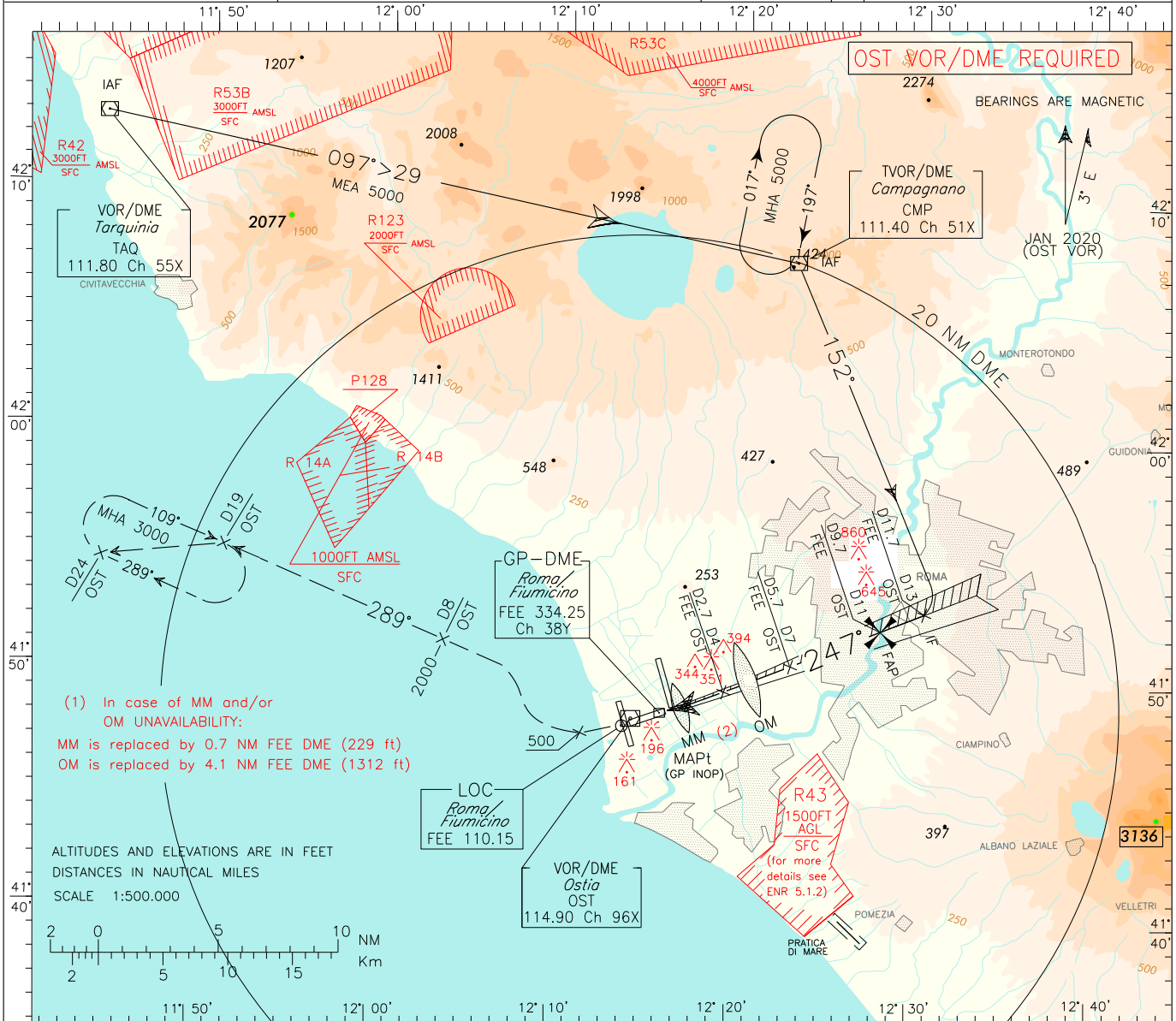
|      |                           |                   |
|------|---------------------------|-------------------|
| APP  | Roma Arrivals             | 125.500 (127.950) |
| TWR  | Roma Director             | 131.250 (119.200) |
| ATIS | Fiume Arrival Information | 126.125           |

AD ELEV  
14

LIRF  
ROMA/FIUMICINO  
ILS or LOC RWY 25

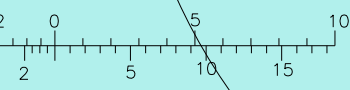
DOC. 8168 ED.6-2014

CHANGE: RENUMBERED PAGE

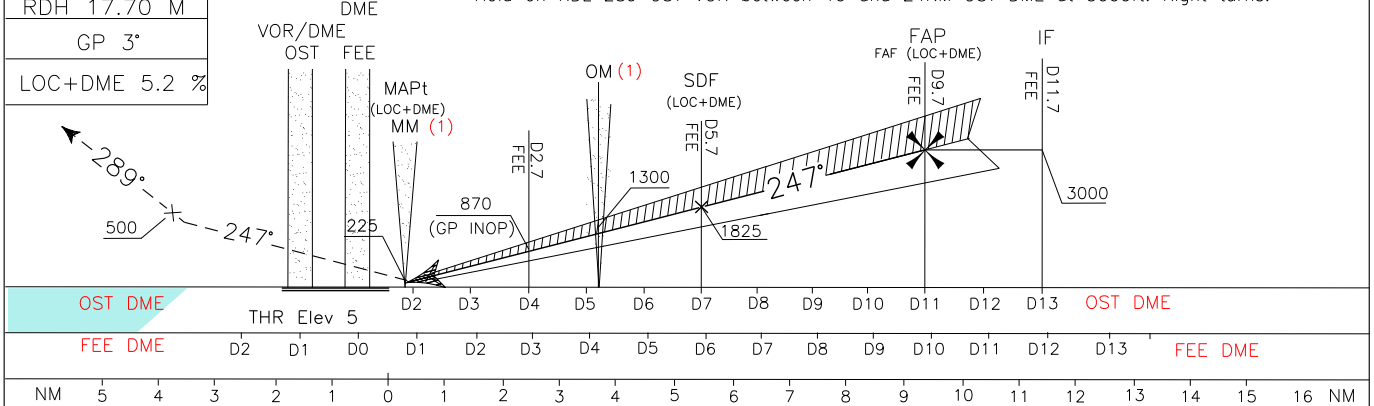


(1) In case of MM and/or OM UNAVAILABILITY:  
MM is replaced by 0.7 NM FEE DME (229 ft)  
OM is replaced by 4.1 NM FEE DME (1312 ft)

ALTITUDES AND ELEVATIONS ARE IN FEET  
DISTANCES IN NAUTICAL MILES  
SCALE 1:500,000



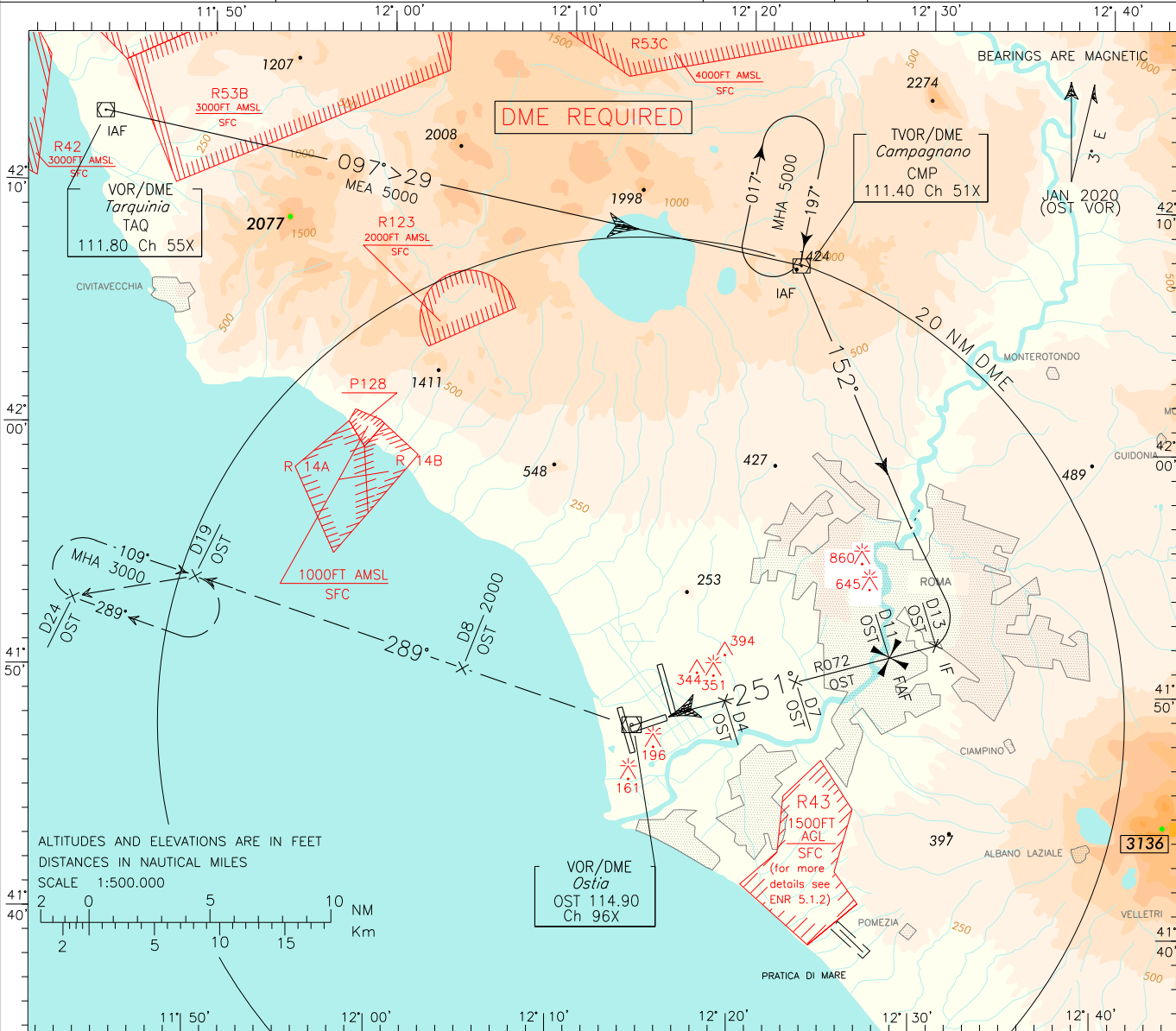
TRANSITION ALT 6000 MISSED APPROACH: Proceed on heading 247° climbing to 2000 ft to be reached within 8 NM OST DME. Passing 500 ft, not before THR25, turn right on RDL 289 OST VOR. Hold on RDL 289 OST VOR between 19 and 24NM OST DME at 3000ft. Right turns.



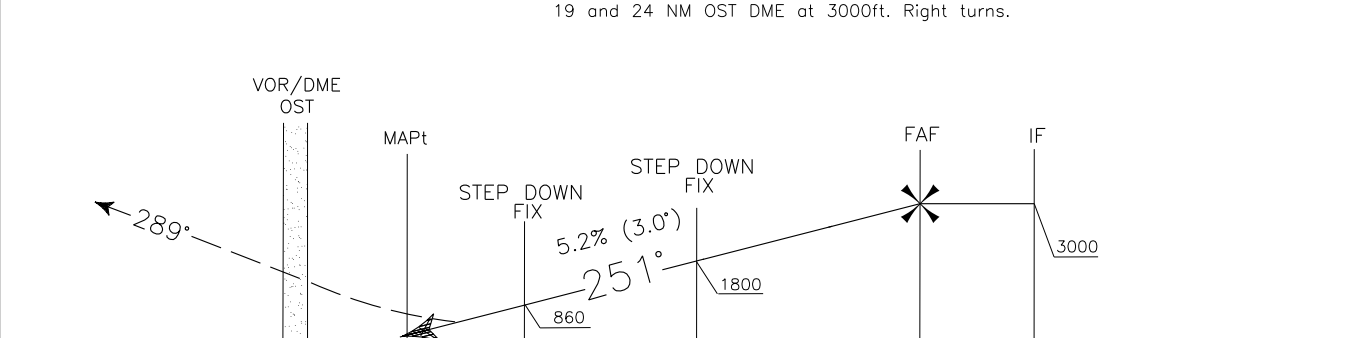
|                      |            |           |           |           |           |            |     |        |        |         |             |                          |
|----------------------|------------|-----------|-----------|-----------|-----------|------------|-----|--------|--------|---------|-------------|--------------------------|
| STRAIGHT IN APPROACH | ILS CAT. I | A         | B         | C         | D         | FT per MIN | GS  | FAF-OM | OM-MM  | DME FEE | ALT (HGT)   | MNM SECT ALT OST VOR<br> |
|                      | LOC        | 223 (218) | 233 (228) | 243 (238) | 248 (243) | 420        | 80  | 5.7 NM | 3.4 NM | 5       | 1600 (1595) |                          |
|                      |            | 400 (395) |           |           |           | 525        | 100 | 3 : 24 | 2 : 02 | 4       | 1285 (1280) |                          |
|                      |            |           |           |           |           | 630        | 120 | 2 : 50 | 1 : 41 | 3       | 965 (960)   |                          |
| CIRCLING             |            | 800 (786) |           | 900 (886) |           | 735        | 140 | 2 : 26 | 1 : 27 | 2       | 645 (640)   |                          |
|                      |            |           |           |           |           | 845        | 160 | 1 : 53 | 1 : 16 | 1       | 330 (325)   |                          |

DOC. 8168 ED.6-2014 - AMDT7  
CHANGE: RENUMBERED PAGE

|      |                           |                   |         |      |                |        |
|------|---------------------------|-------------------|---------|------|----------------|--------|
| APP  | Roma Arrivals             | 125.500 (127.950) | AD ELEV | LIRF | ROMA/FIUMICINO |        |
| TWR  | Roma Director             | 131.250 (119.200) | 14      |      |                |        |
| ATIS | Fiume TWR                 | 118.700 (127.625) |         |      |                |        |
|      | Fiume Arrival Information | 126.125           |         |      |                |        |
|      |                           |                   |         |      | VOR            | RWY 25 |

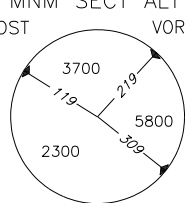


TRANSITION ALT 6000  
MISSED APPROACH: Turn right to join RDL 289 OST VOR and climb to 2000 ft within 8 NM OST DME. Hold on RDL 289 OST VOR between 19 and 24 NM OST DME at 3000ft. Right turns.



|         |            |    |    |    |    |    |    |    |    |     |     |     |     |     |     |         |    |    |    |    |    |    |    |
|---------|------------|----|----|----|----|----|----|----|----|-----|-----|-----|-----|-----|-----|---------|----|----|----|----|----|----|----|
| OST DME | THR Elev 5 | D2 | D3 | D4 | D5 | D6 | D7 | D8 | D9 | D10 | D11 | D12 | D13 | D14 | D15 | OST DME |    |    |    |    |    |    |    |
| NM      | 5          | 4  | 3  | 2  | 1  | 0  | 1  | 2  | 3  | 4   | 5   | 6   | 7   | 8   | 9   | 10      | 11 | 12 | 13 | 14 | 15 | 16 | NM |

|                      |     |           |   |           |   |            |            |         |      |           |                      |
|----------------------|-----|-----------|---|-----------|---|------------|------------|---------|------|-----------|----------------------|
| OCA(OCH)             |     | A         | B | C         | D | FT per MIN | GS         | FAF-MAP | DIST | ALT (HGT) | MNM SECT ALT OST VOR |
| STRAIGHT IN APPROACH | VOR | 550 (545) |   |           |   |            |            |         |      |           |                      |
|                      |     |           |   |           |   | 5 DME      | 1170(1165) |         |      |           |                      |
|                      |     |           |   |           |   | 4 DME      | 860 (855)  |         |      |           |                      |
|                      |     |           |   |           |   |            |            |         |      |           |                      |
| CIRCLING             |     | 800 (786) |   | 900 (886) |   | 735        | 140        | 3 : 51  |      |           |                      |
|                      |     |           |   |           |   | 845        | 160        | 3 : 22  |      |           |                      |





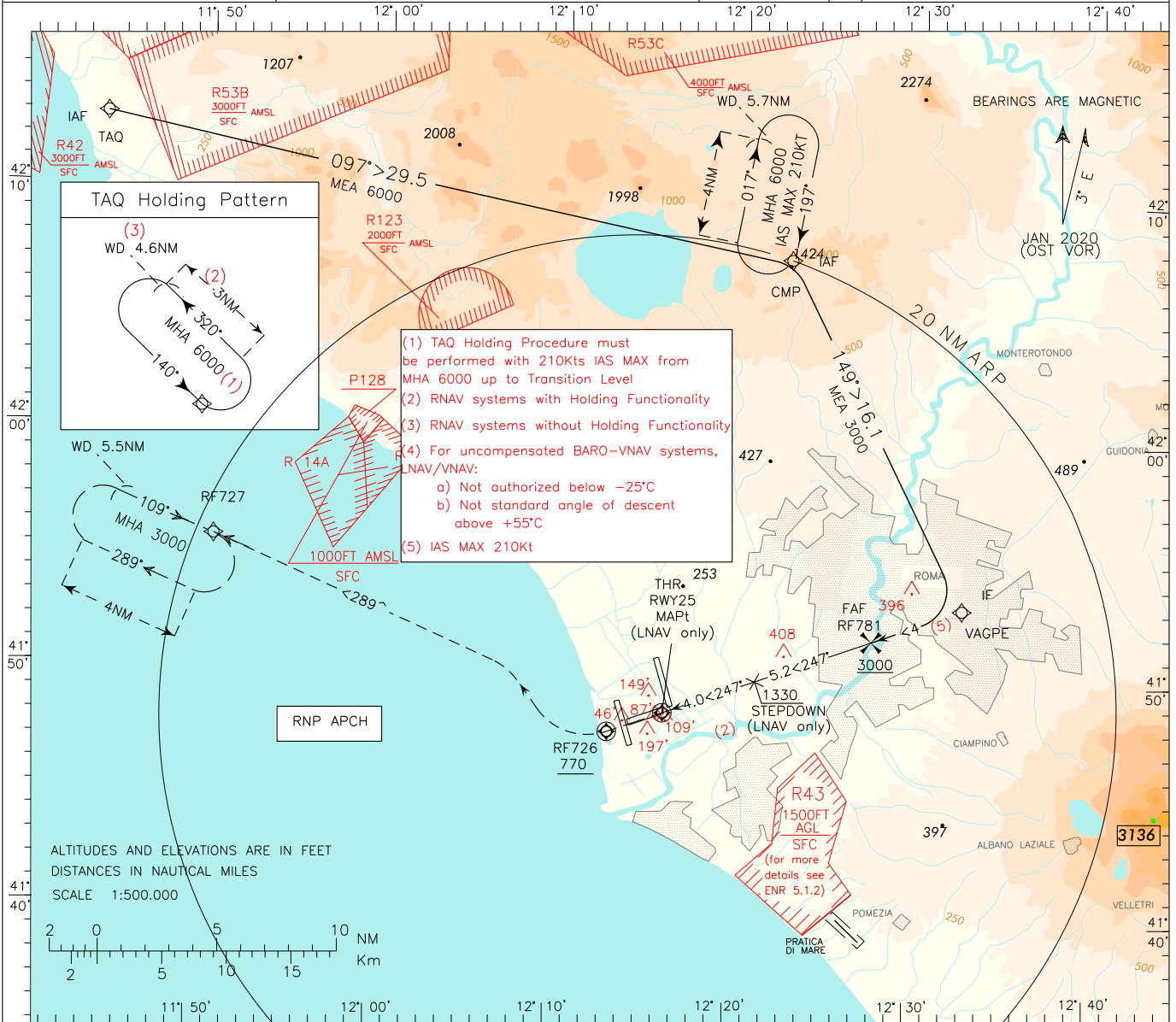
DOC. 8168 ED.6-2014 - AMDT 7  
CHANGE: RENUMBERED PAGE

EGNOS  
CH 55018  
E25A

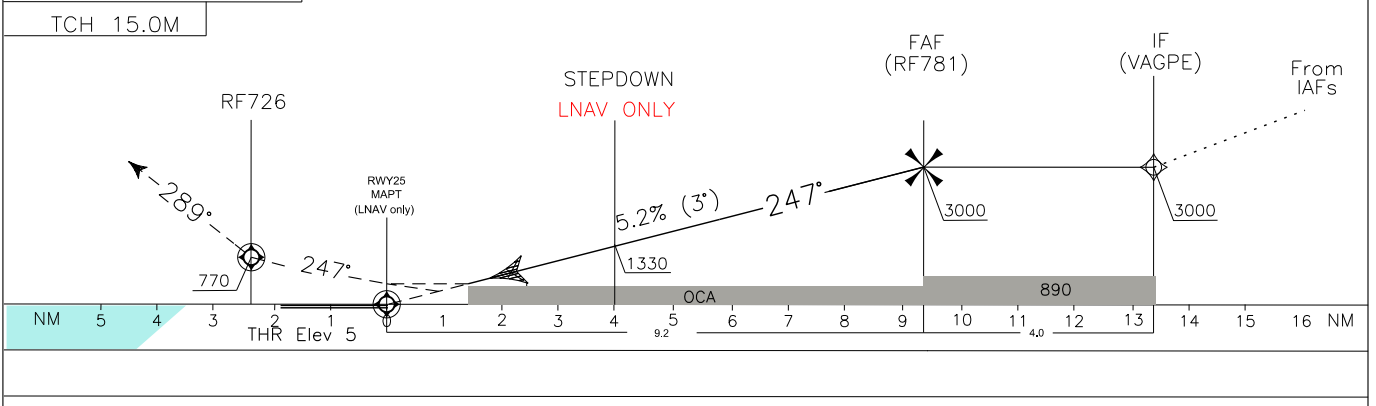
APP Roma Arrivals 125.500 (127.950)  
TWR Roma Director 131.250 (119.200)  
Fiume TWR 118.700 (127.625)  
ATIS Fiume Arrival Information 126.125

AD ELEV  
14

LIRF  
ROMA/FIUMICINO  
RNP RWY 25



TRANSITION ALT 6000 MISSED APPROACH: Proceed RWY heading climbing to 3000ft. Over RF726 turn right to join and follow track 289° bound to RF727 to join Missed Approach Holding Pattern



| OCA(OCH)             |           | A         | B         | C         | D         | FT per MIN | GS     | FAF-MAPt | DIST THR25 | ALT (HGT)  | MNM SECT ALT ARP |
|----------------------|-----------|-----------|-----------|-----------|-----------|------------|--------|----------|------------|------------|------------------|
| STRAIGHT IN APPROACH | LPV       | 217 (212) | 229 (224) | 237 (232) | 248 (243) | 425        | 80     | 9.2 NM   | 9          | 2926(2921) | 25NM<br>5800     |
|                      | LNAV/VNAV | 279 (274) | 291 (286) | 299 (294) | 310 (305) | 530        | 100    | 6 : 55   | 8          | 2608(2603) |                  |
|                      | LNAV      | 590 (585) |           |           |           | 637        | 120    | 5 : 31   | 7          | 2289(2284) |                  |
|                      |           |           |           |           |           | 743        | 140    | 4 : 36   | 6          | 1971(1966) |                  |
|                      |           |           |           |           | 849       | 160        | 3 : 57 | 5        | 1653(1648) |            |                  |
| CIRCLING             |           | 800 (786) |           | 900 (886) |           |            |        | 3 : 27   | 4          | 1334(1329) |                  |
|                      |           |           |           |           |           |            |        |          | 3          | 1015(1010) |                  |
|                      |           |           |           |           |           |            |        |          | 2          | 696(691)   |                  |
|                      |           |           |           |           |           |            |        |          | 1          | 377(372)   |                  |

**TABULAR DESCRIPTION**  
**RNP RWY 25 – Instrument Approach procedure**

| Serial Number | Path Terminator | Waypoint Identifier | Fly Over | Course °M(°T) | Magnetic Variation | Distance (NM) | Turn Direction | Altitude (ft) | Speed Limit (kt) | VPA/TCH | Navigation Specification |
|---------------|-----------------|---------------------|----------|---------------|--------------------|---------------|----------------|---------------|------------------|---------|--------------------------|
| 010           | IF              | TAQ                 | -        | -             | -                  | -             | -              | +6000         | 210 (3)          | -       | RNP APCH                 |
| 020           | TF              | CMP                 | -        | 097° (100.5°) | -                  | 29.5          | -              | +6000         | -                | -       | RNP APCH                 |
| 030           | TF              | VAGPE               | -        | 149° (152.7°) | -                  | 16.1          | -              | +3000         | 210              | -       | RNP APCH                 |
|               |                 |                     |          |               |                    |               |                |               |                  |         |                          |
| 020           | IF              | CMP                 | -        | -             | -                  | -             | -              | +6000         | 210              | -       | RNP APCH                 |
| 030           | TF              | VAGPE               | -        | 149° (152.7°) | -                  | 16.1          | -              | +3000         | 210              | -       | RNP APCH                 |
|               |                 |                     |          |               |                    |               |                |               |                  |         |                          |
| 040           | TF              | RF781               | -        | 247° (249.9°) | -                  | 4.0           | -              | +3000         | -                | -       | RNP APCH                 |
| 050           | TF              | RWY25               | Y        | 247° (249.9°) | -                  | 9.2           | -              | -             | -                | 3°/15   | RNP APCH                 |
| 060           | CF              | RF726               | Y        | 247° (249.9°) | 3                  | 2.5           | -              | +770          | -                | -       | RNP APCH                 |
| 070           | CF              | RF727               | -        | 289° (292.7°) | 3                  | -             | -              | +3000         | -                | -       | RNP APCH                 |
| 080           | HM              | RF727               | Y        | 109° (102.6°) | 3                  | -             | -              | +3000         | -                | -       | RNAV1                    |

| Path Terminator | Waypoint Identifier | Inbound Course °M (°T) | Leg Distance (NM) (1) | Timing(min.)/ Waypoint Distance (NM) (2) | Turn Direction | Minimum Altitude (FT) | Maximum Altitude (FL) | Speed Limit (kt) | Magnetic Variation (°) | Navigation Specification |
|-----------------|---------------------|------------------------|-----------------------|--|----------------|-----------------------|-----------------------|------------------|------------------------|--------------------------|
| HM              | TAQ                 | 140° (143.0°)          | 3.0                   | - / 4.6                                  | L              | +6000                 | -                     | 210 (3)          | 3                      | RNAV1                    |
| HM              | CMP                 | 197° (200.0°)          | 4.0                   | - / 5.7                                  | R              | +6000                 | -                     | 210              | 3                      | RNAV1                    |
| HM              | RF727               | 109° (102.6°)          | 4.0                   | - / 5.5                                  | R              | +3000                 | -                     | 230              | 3                      | RNAV1                    |

(1) RNAV system with holding functionality

(2) RNAV system without holding functionality

(3) TAQ Holding Procedure must be performed with IAS Max 210Kts from MHA up to Transition Level

**WAYPOINT LIST**  
**RNP RWY 25**

| Waypoint Identifier | Coordinates                  |
|---------------------|------------------------------|
| RF726               | 41°47'43.7"N – 012°13'05.6"E |
| RF727               | 41°55'30.6"N – 011°50'45.6"E |
| RF781               | 41°51'45.3"N – 012°27'43.2"E |

## SBAS FAS DATA BLOCK LIRF RNP RWY 25

## Input data

|                                     |               |
|-------------------------------------|---------------|
| Operation Type                      | 0             |
| SBAS Provider                       | 1 (EGNOS)     |
| Airport Identifier                  | LIRF          |
| Runway                              | 25            |
| Runway Letter                       | 0 (None)      |
| Approach Performance Designator     | 0             |
| Route Indicator                     |               |
| Reference Path Data Selector        | 0             |
| Reference Path Identifier           | E25A          |
| LTP/FTP Latitude                    | 414834.6620N  |
| LTP/FTP Longitude                   | 0121610.1105E |
| LTP/FTP Ellipsoidal Height (metres) | 49.6          |
| FPAP Latitude                       | 414757.5600N  |
| Delta FPAP Latitude (seconds)       | -37.1020      |
| FPAP Longitude                      | 0121355.7100E |
| Delta FPAP Longitude (seconds)      | -134.4005     |
| Threshold Crossing Height           | 15.0          |
| TCH Units Selector                  | 1 (meters)    |
| Glidepath Angle (degrees)           | 3.00          |
| Course Width (metres)               | 105.00        |
| Length Offset (metres)              | 0             |
| HAL (metres)                        | 40.0          |
| VAL (metres)                        | 35.0          |

## Output data

|                      |  |
|----------------------|--|
| Data Block           | 10 06 12 09 0C 19 00 00 01 35<br>32 05 CC 57 F1 11 FD F6 43 05<br>F0 15 24 DE FE FF E5 FB 2C 81<br>2C 01 64 00 C8 AF 1E 16 6C D1 |
| Calculated CRC Value | 1E166CD1   |

## Required Additional Data

|                                     |     |
|-------------------------------------|-----|
| ICAO Code                           | LI  |
| LTP/FTP Orthometric Height (metres) | 1.6 |

Intenzionalmente bianca

*Intentionally left blank*