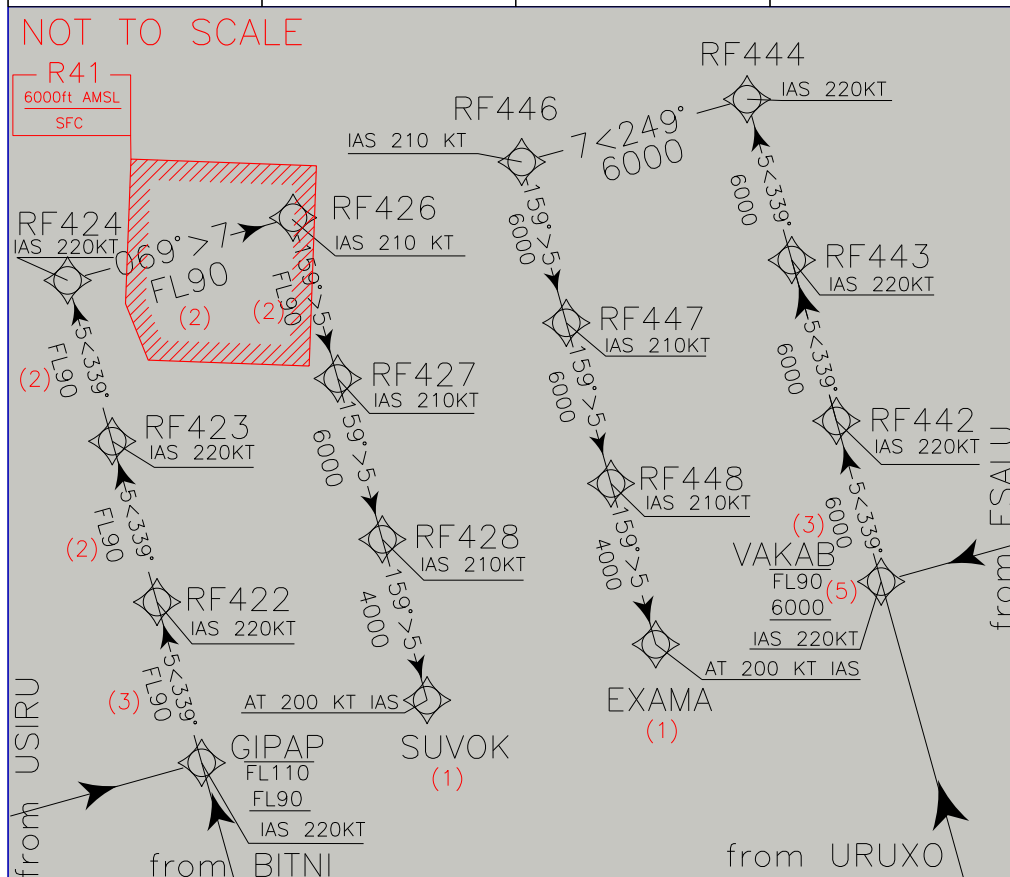


<b>ROMA/FIUMICINO</b>	
<b>STAR RNAV1</b>	
<b>RWY 16L/R</b>	
TRANSITION ALT 6000	
FREQUENCIES	
APP Roma Arrivals Roma Director	TWR Fiume TWR ATIS Fiume Arrival Information
125.500 (127.950) 131.250 (119.200)	118.700 (127.625) 126.125
AIRSPACE CLASSIFICATION SEE AIP ENR 1.4	
REMARKS	
(1) SEE RELEVANT IAC IN FORCE	
(2) MEA 6000FT ATC DISCRETION	
(3) MEA 4000FT ATC DISCRETION	
(4) FOR RNAV SYSTEM WITHOUT RNAV HOLDING FUNCTIONALITY	
(5) VAKAB BETWEEN +5000 AND -FL90 ONLY FOR DIRECT ROUTING TO EXAMA	

<b>DESUK Holding Pattern</b> WD 8.2NM (4) 056°> 6NM 236° DESUK RNAV MHL 130 IAS MAX 230 KT	<b>ELKAP Holding Pattern</b> 090°> 8NM 270° ELKAP RNAV MHL 190 IAS MAX 240 KT	<b>ESINO Holding Pattern</b> 035°> 4NM 215° ESINO RNAV MHA 6000 IAS MAX 230 KT	<b>EXAMA Holding Pattern</b> 159°> 4NM 339° EXAMA RNAV MHA 4000 IAS MAX 200 KT	<b>GIPAP Holding Pattern</b> WD 5.5NM (4) 249°> 4NM 069°> GIPAP RNAV MHA 6000 IAS MAX 210 KT	<b>GOPOL Holding Pattern</b> 096°> 5NM 276° GOPOL RNAV MHA 6000 IAS MAX 230 KT
--	---	--	--	--	--



<b>LAT Holding Pattern</b> WD 7NM (4) 087°> 5NM 267° LAT RNAV MHL 90 IAS MAX 230 KT	<b>RAVUX Holding Pattern</b> WD 7NM (4) 146°> 5NM 326° RAVUX RNAV MHL 100 IAS MAX 230 KT	<b>RITEB Holding Pattern</b> WD 7NM (4) 161°> 5NM 341° RITEB RNAV MHL 110 IAS MAX 220 KT	<b>SUVOK Holding Pattern</b> WD 4NM (4) 159°> 3NM 339° SUVOK RNAV MHA 4000 IAS MAX 185 KT	<b>VAKAB Holding Pattern</b> WD 5.5NM (4) 069°> 4NM 249° VAKAB RNAV MHA 6000 IAS MAX 210 KT	<b>VALMA Holding Pattern</b> WD 5.5NM (4) 246°> 4NM 066°> VALMA RNAV MHA 6000 IAS MAX 230 KT
---	--	--	---	---	--

**ROMA FIUMICINO STAR RNAV 1**  
**RWY 16 L/R**

**ELKAP 3A**

Path Terminator	Waypoint Name	Fly Over	Course °M (°T)	Magnetic Variation	Distance (NM)	Turn Direction	Altitude (ft)	Speed Limit (Kt)	Navigation Specification
IF	ELKAP	-	-	-	-	-	-	-270	RNAV 1
TF	BIBEK	-	119 (121.8)	-	31.8	-	+FL 190	-	RNAV 1
TF	GOPOL	-	096 (098.6)	-	14.9	-	-FL170 +FL150	-250	RNAV 1
TF	GIXOM	-	158 (160.9)	-	9.0	-	-	-230	RNAV 1
TF	USIRU	-	159 (162.2)	-	13.5	-	-	-220	RNAV 1
TF	GIPAP	-	069 (072.3)	-	7.0	L	-FL110 +FL90 (1)	-220	RNAV 1
TF	RF422	-	339 (342.4)	-	5.0	L	+FL 90 (2)	-220	RNAV 1
TF	RF423	-	339 (342.3)	-	5.0	-	-	-220	RNAV 1
TF	RF424	-	339 (342.3)	-	5.0	R	-	-220	RNAV 1
TF	RF426	-	069 (072.3)	-	7.0	R	-	-210	RNAV 1
TF	RF427	-	159 (162.4)	-	5.0	-	+FL90 (1)	-210	RNAV 1
TF	RF428	-	159 (162.4)	-	5.0	-	+6000FT	-210	RNAV 1
TF	SUVOK	-	159 (162.4)	-	5.0	-	+4000FT	AT 200	RNAV 1

**ESINO 3A**

Path Terminator	Waypoint Name	Fly Over	Course °M (°T)	Magnetic Variation	Distance (NM)	Turn Direction	Altitude (ft)	Speed Limit (Kt)	Navigation Specification
IF	ESINO	-	-	-	-	-	-	-270	RNAV 1
TF	LUNAK	-	007 (010.1)	-	19.4	-	-FL130	-250	RNAV 1
TF	BITNI	-	067 (069.6)	-	7.8	-	-	-230	RNAV 1
TF	GIPAP	-	339 (342.5)	-	21.1	-	-FL110 +FL90 (1)	-220	RNAV 1
TF	RF422	-	339 (342.4)	-	5.0	-	+FL 90 (2)	-220	RNAV 1
TF	RF423	-	339 (342.3)	-	5.0	-	-	-220	RNAV 1
TF	RF424	-	339 (342.3)	-	5.0	-	-	-220	RNAV 1
TF	RF426	-	069 (072.3)	-	7.0	R	-	-210	RNAV 1
TF	RF427	-	159 (162.4)	-	5.0	R	+FL90 (1)	-210	RNAV 1
TF	RF428	-	159 (162.4)	-	5.0	-	+6000FT	-210	RNAV 1
TF	SUVOK	-	159 (162.4)	-	5.0	-	+4000FT	AT 200	RNAV 1

**GILIO 3A**

Path Terminator	Waypoint Name	Fly Over	Course °M (°T)	Magnetic Variation	Distance (NM)	Turn Direction	Altitude (ft)	Speed Limit (Kt)	Navigation Specification
IF	GILIO	-	-	-	-	-	-	-250	RNAV 1
TF	BIBEK	-	070 (072.8)	-	15.1	-	-	-	RNAV 1
TF	GOPOL	-	096 (098.6)	-	14.9	-	-FL170 +FL150	-	RNAV 1
TF	GIXOM	-	158 (160.9)	-	9.0	-	-	-230	RNAV 1
TF	USIRU	-	159 (162.2)	-	13.5	-	-	-220	RNAV 1
TF	GIPAP	-	069 (072.3)	-	7.0	L	-FL110 +FL90 (1)	-220	RNAV 1
TF	RF422	-	339 (342.4)	-	5.0	L	+FL 90 (2)	-220	RNAV 1
TF	RF423	-	339 (342.3)	-	5.0	-	-	-220	RNAV 1
TF	RF424	-	339 (342.3)	-	5.0	-	-	-220	RNAV 1
TF	RF426	-	069 (072.3)	-	7.0	R	-	-210	RNAV 1
TF	RF427	-	159 (162.4)	-	5.0	R	+FL90 (1)	-210	RNAV 1
TF	RF428	-	159 (162.4)	-	5.0	-	+6000FT	-210	RNAV 1
TF	SUVOK	-	159 (162.4)	-	5.0	-	+4000FT	AT 200	RNAV 1

## LAT 3A

Path Terminator	Waypoint Name	Fly Over	Course °M (°T)	Magnetic Variation	Distance (NM)	Turn Direction	Altitude (ft)	Speed Limit (Kt)	Navigation Specification
IF	LAT	-	-	-	-	-	-FL160	-250	RNAV 1
IF	RF414	-	314 (316.9)	-	10.7	-	+FL 90	-	RNAV 1
TF	RMC	-	314 (316.8)	-	11.0	-	-	-	RNAV 1
TF	TUVEL	-	312 (314.8)	-	8.0	-	-	-230	RNAV 1
TF	URUXO	-	340 (342.7)	-	13.7	-	-	-220	RNAV 1
TF	VAKAB	-	339 (342.7)	-	4.3	-	-FL90 +6000FT (3)	-220	RNAV 1
TF	RF442	-	339 (342.7)	-	5.0	-	+6000FT (2)	-220	RNAV 1
TF	RF443	-	339 (342.7)	-	5.0	-	-	-220	RNAV 1
TF	RF444	-	339 (342.6)	-	5.0	-	-	-220	RNAV 1
TF	RF446	-	249 (252.6)	-	7.0	L	-	-210	RNAV 1
TF	RF447	-	159 (162.5)	-	5.0	L	-	-210	RNAV 1
TF	RF448	-	159 (162.5)	-	5.0	-	+6000FT	-210	RNAV 1
TF	EXAMA	-	159 (162.6)	-	5.0	-	+4000FT	AT 200	RNAV 1

## MOPUV 3A

Path Terminator	Waypoint Name	Fly Over	Course °M (°T)	Magnetic Variation	Distance (NM)	Turn Direction	Altitude (ft)	Speed Limit (Kt)	Navigation Specification
IF	MOPUV	-	-	-	-	-	-	-250	RNAV 1
TF	DESUK	-	236 (239.3)	-	7.6	-	-FL 160	-230	RNAV 1
TF	RF412	-	242 (245.3)	-	16.1	-	+FL 110	-	RNAV 1
TF	RMC	-	242 (245.1)	-	11.0	-	-	-	RNAV 1
TF	TUVEL	-	312 (314.8)	-	8.0	-	-	-	RNAV 1
TF	URUXO	-	340 (342.7)	-	13.7	-	-	-220	RNAV 1
TF	VAKAB	-	339 (342.7)	-	4.3	-	-FL90 +6000FT (3)	-220	RNAV 1
TF	RF442	-	339 (342.7)	-	5.0	-	+6000FT (2)	-220	RNAV 1
TF	RF443	-	339 (342.7)	-	5.0	-	-	-220	RNAV 1
TF	RF444	-	339 (342.6)	-	5.0	-	-	-220	RNAV 1
TF	RF446	-	249 (252.6)	-	7.0	L	-	-210	RNAV 1
TF	RF447	-	159 (162.5)	-	5.0	L	-	-210	RNAV 1
TF	RF448	-	159 (162.5)	-	5.0	-	+6000FT	-210	RNAV 1
TF	EXAMA	-	159 (162.6)	-	5.0	-	+4000FT	AT 200	RNAV 1

## RITEB 3A

Path Terminator	Waypoint Name	Fly Over	Course °M (°T)	Magnetic Variation	Distance (NM)	Turn Direction	Altitude (ft)	Speed Limit (Kt)	Navigation Specification
IF	RITEB	-	-	-	-	-	-FL190 +FL150	-250	RNAV 1
TF	RAVUX	-	146 (149.4)	-	15.5	-	+FL 100	-	RNAV 1
TF	LIGBU	-	146 (149.5)	-	8.0	-	+FL 90	-230	RNAV 1
TF	ESALU	-	159 (162.6)	-	8.9	-	-	-220	RNAV 1
TF	VAKAB	-	249 (252.8)	-	7.0	R	-FL90 +6000FT (3)	-220	RNAV 1
TF	RF442	-	339 (342.7)	-	5.0	R	+6000FT (2)	-220	RNAV 1
TF	RF443	-	339 (342.7)	-	5.0	-	-	-220	RNAV 1
TF	RF444	-	339 (342.6)	-	5.0	-	-	-220	RNAV 1
TF	RF446	-	249 (252.6)	-	7.0	L	-	-210	RNAV 1
TF	RF447	-	159 (162.5)	-	5.0	L	-	-210	RNAV 1
TF	RF448	-	159 (162.5)	-	5.0	-	+6000FT	-210	RNAV 1
TF	EXAMA	-	159 (162.6)	-	5.0	-	+4000FT	AT 200	RNAV 1

**VALMA 3A**

Path Terminator	Waypoint Name	Fly Over	Course °M (°T)	Magnetic Variation	Distance (NM)	Turn Direction	Altitude (ft)	Speed Limit (Kt)	Navigation Specification
IF	VALMA	-	-	-	-	-	-	-270	RNAV 1
TF	LUNAK	-	066 (069.3)	-	21.6	-	-FL130	-250	RNAV 1
TF	BITNI	-	067 (069.6)	-	7.8	L	-	-230	RNAV 1
TF	GIPAP	-	339 (342.5)	-	21.1	-	-FL110 +FL90 (1)	-220	RNAV 1
TF	RF422	-	339 (342.4)	-	5.0	-	+FL 90 (2)	-220	RNAV 1
TF	RF423	-	339 (342.3)	-	5.0	-	-	-220	RNAV 1
TF	RF424	-	339 (342.3)	-	5.0	-	-	-220	RNAV 1
TF	RF426	-	069 (072.3)	-	7.0	R	-	-210	RNAV 1
TF	RF427	-	159 (162.4)	-	5.0	R	+FL90 (1)	-210	RNAV 1
TF	RF428	-	159 (162.4)	-	5.0	-	+6000FT	-210	RNAV 1
TF	SUVOK	-	159 (162.4)	-	5.0	-	+4000FT	AT 200	RNAV 1

**XIBIL 3A**

Path Terminator	Waypoint Name	Fly Over	Course °M (°T)	Magnetic Variation	Distance (NM)	Turn Direction	Altitude (ft)	Speed Limit (Kt)	Navigation Specification
IF	XIBIL	-	-	-	-	-	-	-270	RNAV 1
TF	IPLEK	-	119 (122.6)	-	28.0	-	+FL 190	-	RNAV 1
TF	GOPOL	-	158 (160.8)	-	8.9	-	-FL170 +FL150	-250	RNAV 1
TF	GIXOM	-	158 (160.9)	-	9.0	-	-	-230	RNAV 1
TF	USIRU	-	159 (162.2)	-	13.5	-	-	-220	RNAV 1
TF	GIPAP	-	069 (072.3)	-	7.0	L	-FL110 +FL90 (1)	-220	RNAV 1
TF	RF422	-	339 (342.4)	-	5.0	L	+FL 90 (2)	-220	RNAV 1
TF	RF423	-	339 (342.3)	-	5.0	-	-	-220	RNAV 1
TF	RF424	-	339 (342.3)	-	5.0	-	-	-220	RNAV 1
TF	RF426	-	069 (072.3)	-	7.0	R	-	-210	RNAV 1
TF	RF427	-	159 (162.4)	-	5.0	R	+FL90 (1)	-210	RNAV 1
TF	RF428	-	159 (162.4)	-	5.0	-	+6000FT	-210	RNAV 1
TF	SUVOK	-	159 (162.4)	-	5.0	-	+4000FT	AT 200	RNAV 1

**REMARKS**

- (1) MEA 6000FT ATC Discretion
- (2) MEA 4000FT ATC Discretion
- (3) VAKAB between +5000ft and -FL90 only for direct routing to EXAMA

## HOLDING RNAV 1

Path Terminator	Waypoint Identifier	Inbound Course °M (°T)	Leg Distance (NM) (1)	Timing(min.)/ Waypoint Distance (NM) (2)	Turn Direction	Minimum Altitude (FT)	Maximum Altitude (FL)	Speed Limit (kt)	Magnetic Variation (°)	Navigation Specification
HM	DE Suk	236 (239)	6	-/8.2	R	FL130	-	-230	3	RNAV1
HM	ELKAP	090 (093)	8	-/10.8	R	FL190	-	-240	3	RNAV1
HM	ESINO	035 (038)	4	-/5.5	R	6000	-	-230	3	RNAV1
HM	EXAMA	159 (162)	4	-/5.5	L	4000	-	-200	3	RNAV1
HM	GIPAP	069 (072)	4	-/5.5	L	6000	-	-210	3	RNAV1
HM	GO POL	096 (099)	5	-/7	R	6000	-	-230	3	RNAV1
HM	LAT	267 (270)	5	-/7	R	FL90	-	-230	3	RNAV1
HM	RAVUX	146 (149)	5	-/7	R	FL100	-	-230	3	RNAV1
HM	RITEB	161 (164)	5	-/7	R	FL110	-	-220	3	RNAV1
HM	SUVOK	159 (162)	3	-/4	R	4000	-	-185	3	RNAV1
HM	VAKAB	249 (252)	4	5.5	R	6000	-	-210	3	RNAV1
HM	VALMA	066 (069)	4	5.5	L	6000	-	-230	3	RNAV1
HM	XIBIL (ATC DISCRETION)	120 (123)	8	10.8	L	FL190	-	-240	3	RNAV1

(1) RNAV system with holding functionality

(2) RNAV system without holding functionality

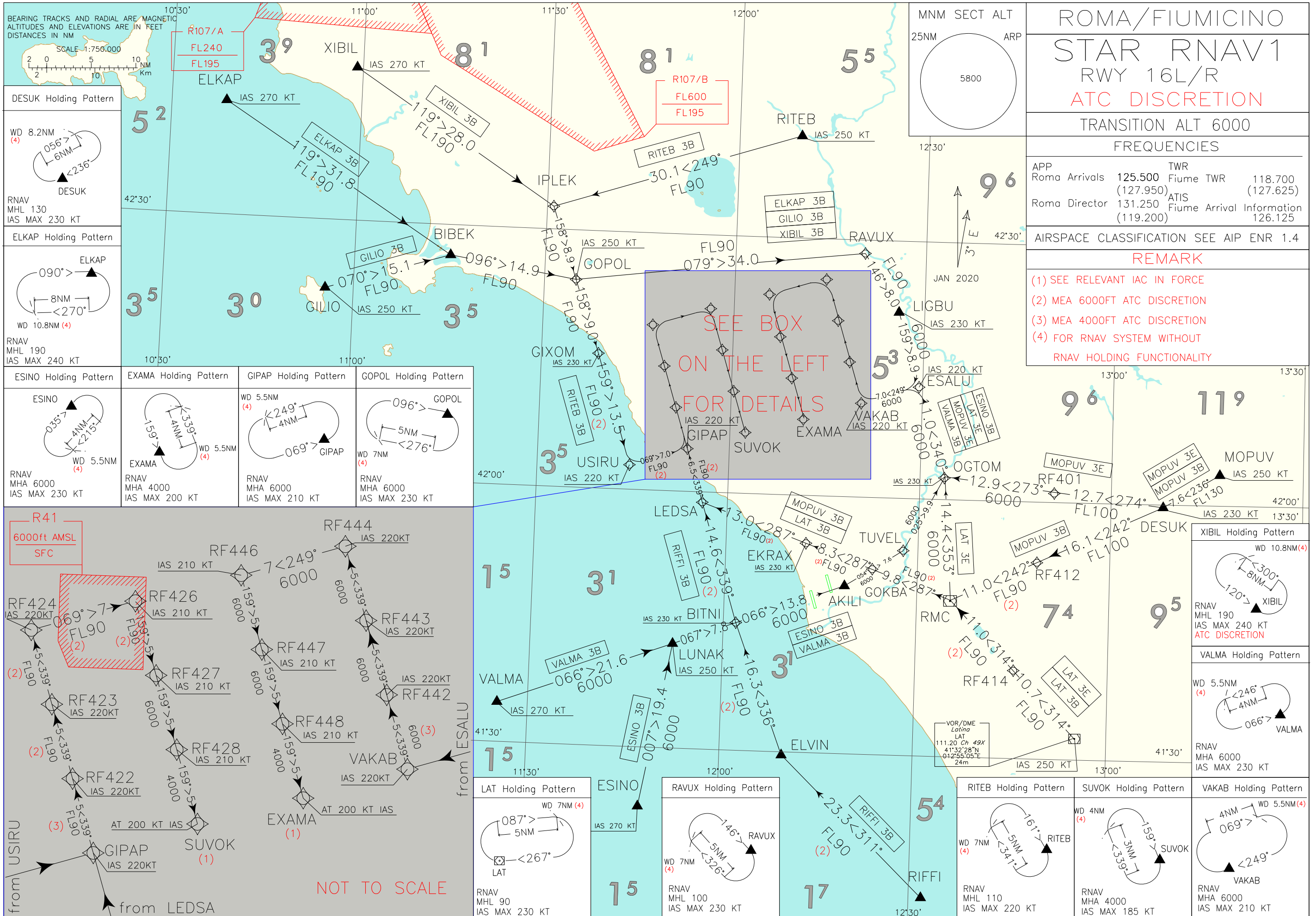
**WAYPOINT LIST**

<b>Waypoint Identifier</b>	<b>Coordinates</b>
RF401	42°01'12.1"N 012°51'10.2"E
RF412	41°52'55.9"N 012°48'37.2"E
RF414	41°40'15.6"N 012°45'21.2"E
RF422	42°09'44.8"N 011°51'23.9"E
RF423	42°14'30.6"N 011°49'21.5"E
RF424	42°19'16.4"N 011°47'18.8"E
RF426	42°21'24.0"N 011°56'19.0"E
RF427	42°16'38.0"N 011°58'21.2"E
RF428	42°11'52.0"N 012°00'23.0"E
RF442	42°15'52.0"N 012°18'31.4"E
RF443	42°20'38.4"N 012°16'30.8"E
RF444	42°25'24.7"N 012°14'29.8"E
RF446	42°23'18.6"N 012°05'28.3"E
RF447	42°18'32.4"N 012°07'29.9"E
RF448	42°13'46.2"N 012°09'31.1"E



Intenzionalmente bianca

*Intentionally left blank*



<b>ROMA/FIUMICINO</b>	
<b>STAR RNAV1</b>	
<b>RWY 16L/R</b>	
<b>ATC DISCRETION</b>	
TRANSITION ALT 6000	
FREQUENCIES	
APP Roma Arrivals Roma Director	TWR Fiume TWR ATIS Fiume Arrival Information
125.500 (127.950) 131.250 (119.200)	118.700 (127.625) 126.125
AIRSPACE CLASSIFICATION SEE AIP ENR 1.4	
REMARK	
(1) SEE RELEVANT IAC IN FORCE	
(2) MEA 6000FT ATC DISCRETION	
(3) MEA 4000FT ATC DISCRETION	
(4) FOR RNAV SYSTEM WITHOUT RNAV HOLDING FUNCTIONALITY	

CHANGE: ROM VOR/DME RENAMED RMC

NOT TO SCALE

**ROMA FIUMICINO STAR RNAV 1**  
**RWY 16 L/R ATC DISCRETION**

**ELKAP 3B**

Path Terminator	Waypoint Name	Fly Over	Course °M (°T)	Magnetic Variation	Distance (NM)	Turn Direction	Altitude (ft)	Speed Limit (Kt)	Navigation Specification
IF	ELKAP	-	-	-	-	-	-	-270	RNAV1
TF	BIBEK	-	119 (121.8)	-	31.8	-	+FL 190	-	RNAV1
TF	GOPOL	-	096 (098.6)	-	14.9	-	-	-250	RNAV1
TF	RAVUX	-	079 (082.4)	-	34.0	-	-	-	RNAV1
TF	LIGBU	-	146 (149.5)	-	8.0	-	+FL90	-230	RNAV1
TF	ESALU	-	159 (162.6)	-	8.9	-	-	-220	RNAV1
TF	VAKAB	-	249 (252.8)	-	7.0	R	+6000FT	-220	RNAV1
TF	RF442	-	339 (342.7)	-	5.0	R	+6000FT (2)	-220	RNAV1
TF	RF443	-	339 (342.7)	-	5.0	-	-	-220	RNAV1
TF	RF444	-	339 (342.6)	-	5.0	-	-	-220	RNAV1
TF	RF446	-	249 (252.6)	-	7.0	L	-	-210	RNAV1
TF	RF447	-	159 (162.5)	-	5.0	L	-	-210	RNAV1
TF	RF448	-	159 (162.5)	-	5.0	-	+6000FT	-210	RNAV1
TF	EXAMA	-	159 (162.6)	-	5.0	-	+4000FT	AT 200	RNAV1

**ESINO 3B**

Path Terminator	Waypoint Name	Fly Over	Course °M (°T)	Magnetic Variation	Distance (NM)	Turn Direction	Altitude (ft)	Speed Limit (Kt)	Navigation Specification
IF	ESINO	-	-	-	-	-	-	-270	RNAV1
TF	LUNAK	-	007 (010.1)	-	19.4	-	-	-250	RNAV1
TF	BITNI	-	067 (069.6)	-	7.8	-	-	-230	RNAV1
TF	AKILI	-	066 (068.9)	-	13.8	-	-	-	RNAV1
TF	TUVEL	-	054 (057.4)	-	7.6	-	-	-	RNAV1
TF	OGTOM	-	025 (027.8)	-	9.9	-	-	-230	RNAV1
TF	ESALU	-	340 (342.8)	-	11.0	-	-	-220	RNAV1
TF	VAKAB	-	249 (252.8)	-	7.0	L	+6000FT	-220	RNAV1
TF	RF442	-	339 (342.7)	-	5.0	R	+6000FT (2)	-220	RNAV1
TF	RF443	-	339 (342.7)	-	5.0	-	-	-220	RNAV1
TF	RF444	-	339 (342.6)	-	5.0	-	-	-220	RNAV1
TF	RF446	-	249 (252.6)	-	7.0	L	-	-210	RNAV1
TF	RF447	-	159 (162.5)	-	5.0	L	-	-210	RNAV1
TF	RF448	-	159 (162.5)	-	5.0	-	+6000FT	-210	RNAV1
TF	EXAMA	-	159 (162.6)	-	5.0	-	+4000FT	AT 200	RNAV1

**GILIO 3B**

Path Terminator	Waypoint Name	Fly Over	Course °M (°T)	Magnetic Variation	Distance (NM)	Turn Direction	Altitude (ft)	Speed Limit (Kt)	Navigation Specification
IF	GILIO	-	-	-	-	-	-	-250	RNAV1
TF	BIBEK	-	070 (072.8)	-	15.1	-	-	-	RNAV1
TF	GOPOL	-	096 (098.6)	-	14.9	-	-	-	RNAV1
TF	RAVUX	-	079 (082.4)	-	34.0	-	-	-	RNAV1
TF	LIGBU	-	146 (149.5)	-	8.0	-	+FL90	-230	RNAV1
TF	ESALU	-	159 (162.6)	-	8.9	-	-	-220	RNAV1
TF	VAKAB	-	249 (252.8)	-	7.0	R	+6000FT	-220	RNAV1
TF	RF442	-	339 (342.7)	-	5.0	R	+6000FT (2)	-220	RNAV1
TF	RF443	-	339 (342.7)	-	5.0	-	-	-220	RNAV1
TF	RF444	-	339 (342.6)	-	5.0	-	-	-220	RNAV1
TF	RF446	-	249 (252.6)	-	7.0	L	-	-210	RNAV1
TF	RF447	-	159 (162.5)	-	5.0	L	-	-210	RNAV1
TF	RF448	-	159 (162.5)	-	5.0	-	+6000FT	-210	RNAV1
TF	EXAMA	-	159 (162.6)	-	5.0	-	+4000FT	AT 200	RNAV1

**LAT 3B**

Path Terminator	Waypoint Name	Fly Over	Course °M (°T)	Magnetic Variation	Distance (NM)	Turn Direction	Altitude (ft)	Speed Limit (Kt)	Navigation Specification
IF	LAT	-	-	-	-	-	-	-250	RNAV1
TF	RF414	-	314 (316.9)	-	10.7	-	-	-	RNAV1
TF	RMC	-	314 (316.8)	-	11.0	-	-	-	RNAV1
TF	GOKBA	-	287 (289.9)	-	9.8	-	-	-	RNAV1
TF	EKRAX	-	287 (289.8)	-	8.3	-	-	-230	RNAV1
TF	LEDSA	-	287 (289.7)	-	13.0	-	-	-	RNAV1
TF	GIPAP	-	339 (342.4)	-	6.5	-	+FL90 (1)	-220	RNAV1
TF	RF422	-	339 (342.4)	-	5.0	-	+FL 90 (2)	-220	RNAV1
TF	RF423	-	339 (342.3)	-	5.0	-	-	-220	RNAV1
TF	RF424	-	339 (342.3)	-	5.0	-	-	-220	RNAV1
TF	RF426	-	069 (072.3)	-	7.0	R	-	-210	RNAV1
TF	RF427	-	159 (162.4)	-	5.0	R	+FL90 (1)	-210	RNAV1
TF	RF428	-	159 (162.4)	-	5.0	-	+6000FT	-210	RNAV1
TF	SUVOK	-	159 (162.4)	-	5.0	-	+4000FT	AT 200	RNAV1

## LAT 3E

Path Terminator	Waypoint Name	Fly Over	Course °M (°T)	Magnetic Variation	Distance (NM)	Turn Direction	Altitude (ft)	Speed Limit (Kt)	Navigation Specification
IF	LAT	-	-	-	-	-	-	-250	RNAV1
TF	RF414	-	314 (316.9)	-	10.7	-	-		RNAV1
TF	RMC	-	314 (316.8)	-	11.0	-	+FL 90 (1)	-	RNAV1
TF	OGTOM	-	353 (355.9)	-	14.4	-	-	-230	RNAV1
TF	ESALU	-	340 (342.8)	-	11.0	-	-	-220	RNAV1
TF	VAKAB	-	249 (252.8)	-	7.0	L	+6000FT	-220	RNAV1
TF	RF442	-	339 (342.7)	-	5.0	R	+6000FT (2)	-220	RNAV1
TF	RF443	-	339 (342.7)	-	5.0	-	-	-220	RNAV1
TF	RF444	-	339 (342.6)	-	5.0	-	-	-220	RNAV1
TF	RF446	-	249 (252.6)	-	7.0	L	-	-210	RNAV1
TF	RF447	-	159 (162.5)	-	5.0	L	-	-210	RNAV1
TF	RF448	-	159 (162.5)	-	5.0	-	+6000FT	-210	RNAV1
TF	EXAMA	-	159 (162.6)	-	5.0	-	+4000FT	AT 200	RNAV1

**MOPUV 3B**

Path Terminator	Waypoint Name	Fly Over	Course °M (°T)	Magnetic Variation	Distance (NM)	Turn Direction	Altitude (ft)	Speed Limit (Kt)	Navigation Specification
IF	MOPUV	-	-	-	-	-	-	-250	RNAV1
TF	DESUJ	-	236 239.3	-	7.6	-	+FL 130	-230	RNAV1
TF	RF412	-	242 (245.3)	-	16.1	-	+FL 100	-	RNAV1
TF	RMC	-	242 (245.1)	-	11.0	-	-	-	RNAV1
TF	GOKBA	-	287 (289.9)	-	9.8	-	-	-	RNAV1
TF	EKRAX	-	287 (289.8)	-	8.3	-	-	-	RNAV1
TF	LEDSA	-	287 (289.7)	-	13.0	-	-	-	RNAV1
TF	GIPAP	-	339 (342.4)	-	6.5	-	+FL90 (1)	-220	RNAV1
TF	RF422	-	339 (342.4)	-	5.0	-	+FL 90 (2)	-220	RNAV1
TF	RF423	-	339 (342.3)	-	5.0	-	-	-220	RNAV1
TF	RF424	-	339 (342.3)	-	5.0	-	-	-220	RNAV1
TF	RF426	-	069 (072.3)	-	7.0	R	-	-210	RNAV1
TF	RF427	-	159 (162.4)	-	5.0	R	+FL90 (1)	-210	RNAV1
TF	RF428	-	159 (162.4)	-	5.0	-	+6000FT	-210	RNAV1
TF	SUVOK	-	159 (162.4)	-	5.0	-	+4000FT	AT 200	RNAV1

**MOPUV 3E**

Path Terminator	Waypoint Name	Fly Over	Course °M (°T)	Magnetic Variation	Distance (NM)	Turn Direction	Altitude (ft)	Speed Limit (Kt)	Navigation Specification
IF	MOPUV	-	-	-	-	-	-	-250	RNAV1
TF	DESUJ	-	236 239.3	-	7.6	-	+FL 130	-230	RNAV1
TF	RF401	-	274 276.9	-	12.7	-	+FL 100	-	RNAV1
TF	OGTOM	-	273 276.6	-	12.9	-	-	-	RNAV1
TF	ESALU	-	340 (342.8)	-	11.0	-	-	-220	RNAV1
TF	VAKAB	-	249 (252.8)	-	7.0	L	+6000FT	-220	RNAV1
TF	RF442	-	339 (342.7)	-	5.0	R	+6000FT (2)	-220	RNAV1
TF	RF443	-	339 (342.7)	-	5.0	-	-	-220	RNAV1
TF	RF444	-	339 (342.6)	-	5.0	-	-	-220	RNAV1
TF	RF446	-	249 (252.6)	-	7.0	L	-	-210	RNAV1
TF	RF447	-	159 (162.5)	-	5.0	L	-	-210	RNAV1
TF	RF448	-	159 (162.5)	-	5.0	-	+6000FT	-210	RNAV1
TF	EXAMA	-	159 (162.6)	-	5.0	-	+4000FT	AT 200	RNAV1

**RIFFI 3B**

Path Terminator	Waypoint Name	Fly Over	Course °M (°T)	Magnetic Variation	Distance (NM)	Turn Direction	Altitude (ft)	Speed Limit (Kt)	Navigation Specification
IF	RIFFI	-	-	-	-	-	-	-	RNAV1
TF	ELVIN	-	311 (314.1)	-	23.3	-	-	-	RNAV1
TF	BITNI	-	336 (339.2)	-	16.3	-	-	-230	RNAV1
TF	LEDSA	-	339 (342.5)	-	14.6	-	-	-	RNAV1
TF	GIPAP	-	339 (342.4)	-	6.5	-	+FL90 (1)	-220	RNAV1
TF	RF422	-	339 (342.4)	-	5.0	-	+FL 90 (2)	-220	RNAV1
TF	RF423	-	339 (342.3)	-	5.0	-	-	-220	RNAV1
TF	RF424	-	339 (342.3)	-	5.0	-	-	-220	RNAV1
TF	RF426	-	069 (072.3)	-	7.0	R	-	-210	RNAV1
TF	RF427	-	159 (162.4)	-	5.0	R	+FL90 (1)	-210	RNAV1
TF	RF428	-	159 (162.4)	-	5.0	-	+6000FT	-210	RNAV1
TF	SUVOK	-	159 (162.4)	-	5.0	-	+4000FT	AT 200	RNAV1



**RITEB 3B**

Path Terminator	Waypoint Name	Fly Over	Course °M (°T)	Magnetic Variation	Distance (NM)	Turn Direction	Altitude (ft)	Speed Limit (Kt)	Navigation Specification
IF	RITEB	-	-	-	-	-	-	-250	RNAV1
TF	IPLEK	-	249 (252.3)	-	30.1	-	-	-	RNAV1
TF	GOPOL	-	158 (160.8)	-	8.9	L	-	-	RNAV1
TF	GIXOM	-	158 (160.9)	-	9.0	-	-	-230	RNAV1
TF	USIRU	-	159 (162.2)	-	13.5	-	-	-220	RNAV1
TF	GIPAP	-	069 (072.3)	-	7.0	L	+FL90 (1)	-220	RNAV1
TF	RF422	-	339 (342.4)	-	5.0	L	+FL 90 (2)	-220	RNAV1
TF	RF423	-	339 (342.3)	-	5.0	-	-	-220	RNAV1
TF	RF424	-	339 (342.3)	-	5.0	R	-	-220	RNAV1
TF	RF426	-	069 (072.3)	-	7.0	R	-	-210	RNAV1
TF	RF427	-	159 (162.4)	-	5.0	-	+FL90 (1)	-210	RNAV1
TF	RF428	-	159 (162.4)	-	5.0	-	+6000FT	-210	RNAV1
TF	SUVOK	-	159 (162.4)	-	5.0	-	+4000FT	AT 200	RNAV1

**VALMA 3B**

Path Terminator	Waypoint Name	Fly Over	Course °M (°T)	Magnetic Variation	Distance (NM)	Turn Direction	Altitude (ft)	Speed Limit (Kt)	Navigation Specification
IF	VALMA	-	-	-	-	-	-	-270	RNAV1
TF	LUNAK	-	066 (069.3)	-	21.6	-	-	-250	RNAV1
TF	AKILI	-	066 (069.1)	-	21.6	-	-	-	RNAV1
TF	TUVEL	-	054 (057.4)	-	7.6	-	-	-	RNAV1
TF	OGTOM	-	025 (027.8)	-	9.9	-	-	-230	RNAV1
TF	ESALU	-	340 (342.8)	-	11.0	-	-	-220	RNAV1
TF	VAKAB	-	249 (252.8)	-	7.0	L	+6000FT	-220	RNAV1
TF	RF442	-	339 (342.7)	-	5.0	R	+6000FT (2)	-220	RNAV1
TF	RF443	-	339 (342.7)	-	5.0	-	-	-220	RNAV1
TF	RF444	-	339 (342.6)	-	5.0	-	-	-220	RNAV1
TF	RF446	-	249 (252.6)	-	7.0	L	-	-210	RNAV1
TF	RF447	-	159 (162.5)	-	5.0	L	-	-210	RNAV1
TF	RF448	-	159 (162.5)	-	7.0	-	+6000FT	-210	RNAV1
TF	EXAMA	-	159 (162.6)	-	5.0	-	+4000FT	AT 200	RNAV1

**XIBIL 3B**

Path Terminator	Waypoint Name	Fly Over	Course °M (°T)	Magnetic Variation	Distance (NM)	Turn Direction	Altitude (ft)	Speed Limit (Kt)	Navigation Specification
IF	XIBIL	-	-	-	-	-	-	-270	RNAV1
TF	IPLEK	-	119 (122.6)	-	28.0	-	+FL 190	-	RNAV1
TF	GOPOL	-	158 (160.8)	-	8.9	-	-	-250	RNAV1
TF	RAVUX	-	079 (082.4)	-	34.0	-	-	-	RNAV1
TF	LIGBU	-	146 (149.5)	-	8.0	-	+FL90	-230	RNAV1
TF	ESALU	-	159 (162.6)	-	8.9	-	-	-220	RNAV1
TF	VAKAB	-	249 (252.8)	-	7.0	R	+6000FT	-220	RNAV1
TF	RF442	-	339 (342.7)	-	5.0	R	+6000FT (2)	-220	RNAV1
TF	RF443	-	339 (342.7)	-	5.0	-	-	-220	RNAV1
TF	RF444	-	339 (342.6)	-	5.0	-	-	-220	RNAV1
TF	RF446	-	249 (252.6)	-	7.0	L	-	-210	RNAV1
TF	RF447	-	159 (162.5)	-	5.0	L	-	-210	RNAV1
TF	RF448	-	159 (162.5)	-	5.0	-	+6000FT	-210	RNAV1
TF	EXAMA	-	159 (162.6)	-	5.0	-	+4000FT	AT 200	RNAV1

**REMARKS**

- (1) MEA 6000FT ATC Discretion  
(2) MEA 4000FT ATC Discretion

## HOLDING RNAV 1

Path Terminator	Waypoint Identifier	Inbound Course °M (°T)	Leg Distance (NM) (1)	Timing(min.)/ Waypoint Distance (NM) (2)	Turn Direction	Minimum Altitude (FT)	Maximum Altitude (FL)	Speed Limit (kt)	Magnetic Variation (°)	Navigation Specification
HM	DESUK	236 (239.0)	6	-/8.2	R	FL130	-	-230	3	RNAV1
HM	ELKAP	090 (093.0)	8	-/10.8	R	FL190	-	-240	3	RNAV1
HM	ESINO	035 (038)	4	-/5.5	R	6000	-	-230	3	RNAV1
HM	EXAMA	159 (162)	4	-/5.5	L	4000	-	-200	3	RNAV1
HM	GIPAP	069 (072)	4	-/5.5	L	6000	-	-210	3	RNAV1
HM	GOPOL	096 (099)	5	-/7	R	6000	-	-230	3	RNAV1
HM	LAT	267 (270)	5	-/7	R	FL90	-	-230	3	RNAV1
HM	RAVUX	146 (149)	5	-/7	R	FL100	-	-230	3	RNAV1
HM	RITEB	161 (164)	5	-/7	R	FL110	-	-220	3	RNAV1
HM	SUVOK	159 (162)	3	-/4	R	4000	-	-185	3	RNAV1
HM	VAKAB	249 (252)	4	5.5	R	6000	-	-210	3	RNAV1
HM	VALMA	066 (069)	4	5.5	L	6000	-	-230	3	RNAV1
HM	XIBIL (ATC DISCRETION)	120 (123)	8	10.8	L	FL190	-	-240	3	RNAV1

(1) RNAV system with holding functionality

(2) RNAV system without holding functionality

**WAYPOINT LIST**

<b>Waypoint Identifier</b>	<b>Coordinates</b>
RF401	42°01'12.1"N 012°51'10.2"E
RF412	41°52'55.9"N 012°48'37.2"E
RF414	41°40'15.6"N 012°45'21.2"E
RF422	42°09'44.8"N 011°51'23.9"E
RF423	42°14'30.6"N 011°49'21.5"E
RF424	42°19'16.4"N 011°47'18.8"E
RF426	42°21'24.0"N 011°56'19.0"E
RF427	42°16'38.0"N 011°58'21.2"E
RF428	42°11'52.0"N 012°00'23.0"E
RF442	42°15'52.0"N 012°18'31.4"E
RF443	42°20'38.4"N 012°16'30.8"E
RF444	42°25'24.7"N 012°14'29.8"E
RF446	42°23'18.6"N 012°05'28.3"E
RF447	42°18'32.4"N 012°07'29.9"E
RF448	42°13'46.2"N 012°09'31.1"E

ROMA/FIUMICINO  
STAR RNAV1  
RWY 34L/R

TRANSITION ALT 6000

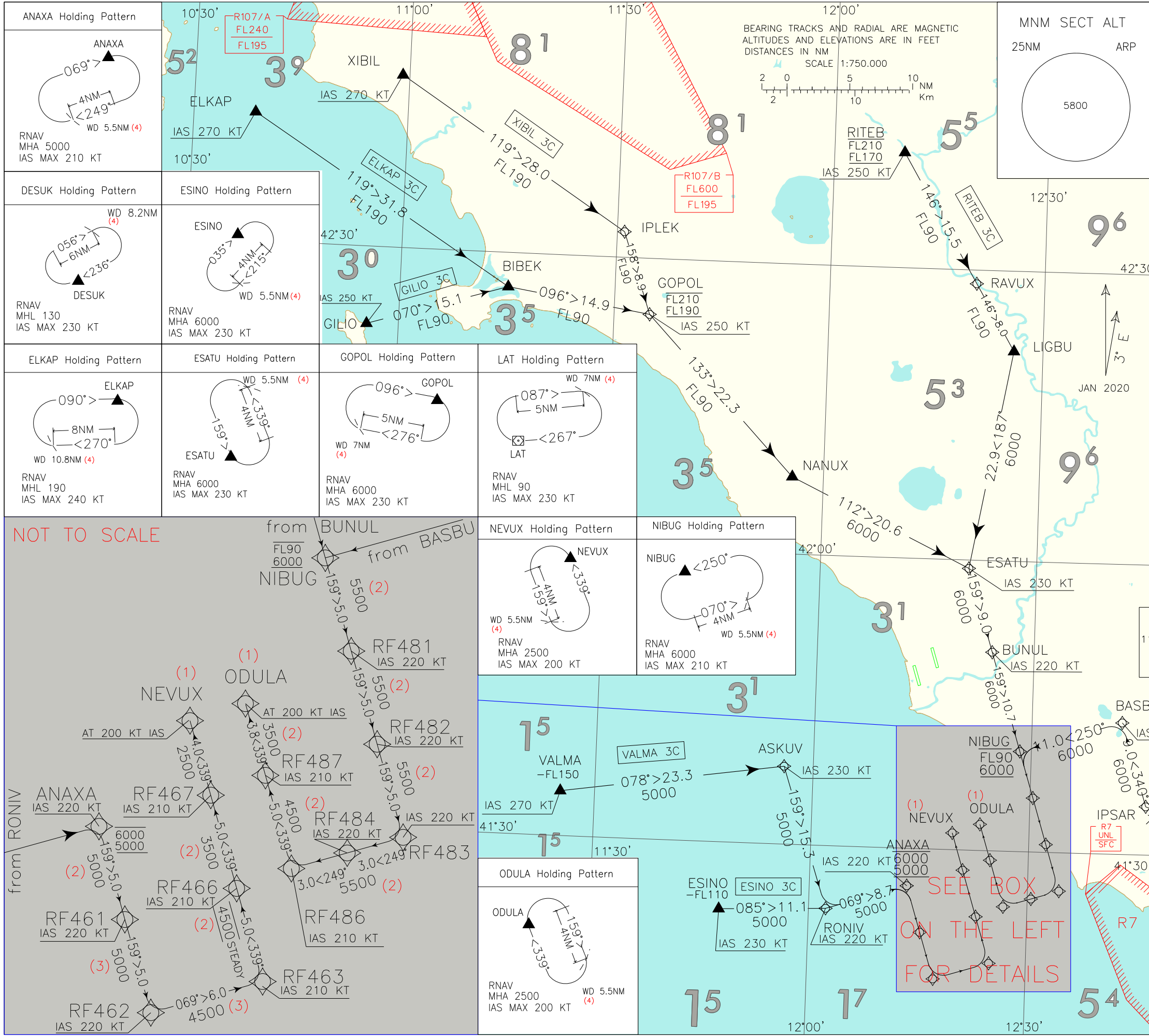
FREQUENCIES

APP	125.500	TWR	118.700
Roma Arrivals	(127.950)	Fiume TWR	(127.625)
Roma Director	131.250	Fiume Arrival Information	126.125
	(119.200)		

AIRSPACE CLASSIFICATION SEE AIP ENR 1.4

REMARK

- (1) SEE RELEVANT IAC IN FORCE
- (2) MEA 2500FT ATC DISCRETION
- (3) MEA 3500FT ATC DISCRETION
- (4) FOR RNAV SYSTEM WITHOUT RNAV HOLDING FUNCTIONALITY



CHANGE: MAGNETIC VARIATION UPDATED; RWY34C WITHDRAWN and RENUMBERED PAGE.

## ROMA FIUMICINO STAR RNAV 1

## RWY 34 L/R

## ELKAP 3C

Path Terminator	Waypoint Name	Fly Over	Course °M (°T)	Magnetic Variation	Distance (NM)	Turn Direction	Altitude (ft)	Speed Limit (Kt)	Navigation Specification
IF	ELKAP	-	-	-	-	-	-	-270	RNAV1
TF	BIBEK	-	119 (121.8)	-	31.8	-	+FL 190	-	RNAV1
TF	GOPOL	-	096 (098.6)	-	14.9	-	-FL210 +FL190	-250	RNAV1
TF	NANUX	-	133 (136.4)	-	22.3	-	+FL90	-	RNAV1
TF	ESATU	-	112 (115.4)	-	20.6	-	-	-230	RNAV1
TF	BUNUL	-	159 (162.7)	-	9.0	-	-	-220	RNAV1
TF	NIBUG	-	159 (162.7)	-	10.7	-	-FL90 +6000FT	-220	RNAV1
TF	RF481	-	159 (162.8)	-	5.0	-	-	-220	RNAV1
TF	RF482	-	159 (162.9)	-	5.0	-	-	-220	RNAV1
TF	RF483	-	159 (162.7)	-	5.0	-	-	-220	RNAV1
TF	RF484	-	249 (252.8)	-	3.0	R	-	-220	RNAV1
TF	RF486	-	249 (252.8)	-	3.0	-	+5500FT (1)	-210	RNAV1
TF	RF487	-	339 (342.7)	-	5.0	R	+4500FT (1)	-210	RNAV1
TF	ODULA	-	339 (342.7)	-	3.8	-	+3500FT	AT 200	RNAV1

## ESINO 3C

Path Terminator	Waypoint Name	Fly Over	Course °M (°T)	Magnetic Variation	Distance (NM)	Turn Direction	Altitude (ft)	Speed Limit (Kt)	Navigation Specification
IF	ESINO	-	-	-	-	-	-FL110	-230	RNAV1
TF	RONIV	-	085 (087.7)	-	11.1	-	-	-220	RNAV1
TF	ANAXA	-	069 (072.5)	-	8.7	-	-6000FT +5000FT	-220	RNAV1
TF	RF461	-	159 (162.6)	-	5.0	R	+5000FT (1)	-220	RNAV1
TF	RF462	-	159 (162.6)	-	5.0	-	+5000FT (2)	-220	RNAV1
TF	RF463	-	069 (072.7)	-	6.0	L	+4500FT (2)	-210	RNAV1
TF	RF466	-	339 (342.7)	-	5.0	L	4500FT STEADY (1)	-210	RNAV1
TF	RF467	-	339 (342.7)	-	5.0	-	+3500FT (1)	-210	RNAV1
TF	NEVUX	-	339 (342.7)	-	4.0	-	+2500FT	AT 200	RNAV1

## GILIO 3C

Path Terminator	Waypoint Name	Fly Over	Course °M (°T)	Magnetic Variation	Distance (NM)	Turn Direction	Altitude (ft)	Speed Limit (Kt)	Navigation Specification
IF	GILIO	-	-	-	-	-	-	-250	RNAV1
TF	BIBEK	-	070 (072.8)	-	15.1	-	-	-	RNAV1
TF	GOPOL	-	096 (098.6)	-	14.9	-	-FL210 +FL190	-	RNAV1
TF	NANUX	-	133 (136.4)	-	22.3	-	+FL90	-	RNAV1
TF	ESATU	-	112 (115.4)	-	20.6	-	-	-230	RNAV1
TF	BUNUL	-	159 (162.7)	-	9.0	-	-	-220	RNAV1
TF	NIBUG	-	159 (162.7)	-	10.7	-	-FL90 +6000FT	-220	RNAV1
TF	RF481	-	159 (162.8)	-	5.0	-	-	-220	RNAV1
TF	RF482	-	159 (162.9)	-	5.0	-	-	-220	RNAV1
TF	RF483	-	159 (162.7)	-	5.0	-	-	-220	RNAV1
TF	RF484	-	249 (252.8)	-	3.0	R	-	-220	RNAV1
TF	RF486	-	249 (252.8)	-	3.0	-	+5500FT (1)	-210	RNAV1
TF	RF487	-	339 (342.7)	-	5.0	R	+4500FT (1)	-210	RNAV1
TF	ODULA	-	339 (342.7)	-	3.8	-	+3500FT	AT 200	RNAV1

**LAT 3C**

Path Terminator	Waypoint Name	Fly Over	Course °M (°T)	Magnetic Variation	Distance (NM)	Turn Direction	Altitude (ft)	Speed Limit (Kt)	Navigation Specification
IF	LAT	-	-	-	-	-	-FL120	-230	RNAV1
TF	IPSAR	-	287 (290.4)	-	7.3	-	-	-	RNAV1
TF	BASBU	-	340 (343.0)	-	9.0	-	-	-220	RNAV1
TF	NIBUG	-	250 (252.9)	-	11.0	L	-FL90 +6000FT	-220	RNAV1
TF	RF481	-	159 (162.8)	-	5.0	L	-	-220	RNAV1
TF	RF482	-	159 (162.9)	-	5.0	-	-	-220	RNAV1
TF	RF483	-	159 (162.7)	-	5.0	-	-	-220	RNAV1
TF	RF484	-	249 (252.8)	-	3.0	R	-	-220	RNAV1
TF	RF486	-	249 (252.8)	-	3.0	-	+5500FT (1)	-210	RNAV1
TF	RF487	-	339 (342.7)	-	5.0	R	+4500FT (1)	-210	RNAV1
TF	ODULA	-	339 (342.7)	-	3.8	-	+3500FT	AT 200	RNAV1

**MOPUV 3C**

Path Terminator	Waypoint Name	Fly Over	Course °M (°T)	Magnetic Variation	Distance (NM)	Turn Direction	Altitude (ft)	Speed Limit (Kt)	Navigation Specification
IF	MOPUV	-	-	-	-	-	-	-250	RNAV1
TF	DESUK	-	236 239.3	-	7.6	-	+FL 130	-	RNAV1
TF	LAT	-	196 (199.8)	-	28.9	-	-FL 120	-230	RNAV1
TF	IPSAR	-	287 (290.4)	-	7.3	-	-	-	RNAV1
TF	BASBU	-	340 (343.0)	-	9.0	-	-	-220	RNAV1
TF	NIBUG	-	250 (252.9)	-	11.0	L	-FL90 +6000FT	-220	RNAV1
TF	RF481	-	159 (162.8)	-	5.0	L	-	-220	RNAV1
TF	RF482	-	159 (162.9)	-	5.0	-	-	-220	RNAV1
TF	RF483	-	159 (162.7)	-	5.0	-	-	-220	RNAV1
TF	RF484	-	249 (252.8)	-	3.0	R	-	-220	RNAV1
TF	RF486	-	249 (252.8)	-	3.0	-	+5500FT (1)	-210	RNAV1
TF	RF487	-	339 (342.7)	-	5.0	R	+4500FT (1)	-210	RNAV1
TF	ODULA	-	339 (342.7)	-	3.8	-	+3500FT	AT 200	RNAV1



## RITEB 3C

Path Terminator	Waypoint Name	Fly Over	Course °M (°T)	Magnetic Variation	Distance (NM)	Turn Direction	Altitude (ft)	Speed Limit (Kt)	Navigation Specification
IF	RITEB	-	-	-	-	-	-FL210 +FL170	-250	RNAV1
TF	RAVUX	-	146 (149.4)	-	15.5	-	FL 90	-	RNAV1
TF	LIGBU	-	146 (149.5)	-	8.0	-	-	-	RNAV1
TF	ESATU	-	187 (190.0)	-	22.9	-	6000FT	-230	RNAV1
TF	BUNUL	-	159 (162.7)	-	9.0	-	-	-220	RNAV1
TF	NIBUG	-	159 (162.7)	-	10.7	-	-FL90 +6000FT	-220	RNAV1
TF	RF481	-	159 (162.8)	-	5.0	-	-	-220	RNAV1
TF	RF482	-	159 (162.9)	-	5.0	-	-	-220	RNAV1
TF	RF483	-	159 (162.7)	-	5.0	-	-	-220	RNAV1
TF	RF484	-	249 (252.8)	-	3.0	R	-	-220	RNAV1
TF	RF486	-	249 (252.8)	-	3.0	-	+5500FT (1)	-210	RNAV1
TF	RF487	-	339 (342.7)	-	5.0	R	+4500FT (1)	-210	RNAV1
TF	ODULA	-	339 (342.7)	-	3.8	-	+3500FT	AT 200	RNAV1

**VALMA 3C**

Path Terminator	Waypoint Name	Fly Over	Course °M (°T)	Magnetic Variation	Distance (NM)	Turn Direction	Altitude (ft)	Speed Limit (Kt)	Navigation Specification
IF	VALMA	-	-	-	-	-	-FL150	-270	RNAV1
TF	ASKUV	-	078 (081.4)	-	23.3	-	-	-230	RNAV1
TF	RONIV	-	159 (161.7)	-	15.3	-	-	-220	RNAV1
TF	ANAXA	-	069 (072.5)	-	8.7	L	-6000FT +5000FT	-220	RNAV1
TF	RF461	-	159 (162.6)	-	5.0	R	+5000FT (1)	-220	RNAV1
TF	RF462	-	159 (162.6)	-	5.0	-	+5000FT (2)	-220	RNAV1
TF	RF463	-	069 (072.7)	-	6.0	L	+4500FT (2)	-210	RNAV1
TF	RF466	-	339 (342.7)	-	5.0	L	4500FT STEADY (1)	-210	RNAV1
TF	RF467	-	339 (342.7)	-	5.0	-	+3500FT (1)	-210	RNAV1
TF	NEVUX	-	339 (342.7)	-	4.0	-	+2500FT	AT 200	RNAV1

**XIBIL 3C**

Path Terminator	Waypoint Name	Fly Over	Course °M (°T)	Magnetic Variation	Distance (NM)	Turn Direction	Altitude (ft)	Speed Limit (Kt)	Navigation Specification
IF	XIBIL	-	-	-	-	-	-	-270	RNAV1
TF	IPIEK	-	119 (122.6)	-	28.0	-	FL 190	-	RNAV1
TF	GOPOL	-	158 (160.8)	-	8.9	-	-FL210 +FL190	-250	RNAV1
TF	NANUX	-	133 (136.4)	-	22.3	-	+FL90	-	RNAV1
TF	ESATU	-	112 (115.4)	-	20.6	-	-	-230	RNAV1
TF	BUNUL	-	159 (162.7)	-	9.0	-	-	-220	RNAV1
TF	NIBUG	-	159 (162.7)	-	10.7	-	-FL90 +6000FT	-220	RNAV1
TF	RF481	-	159 (162.8)	-	5.0	-	-	-220	RNAV1
TF	RF482	-	159 (162.9)	-	5.0	-	-	-220	RNAV1
TF	RF483	-	159 (162.7)	-	5.0	-	-	-220	RNAV1
TF	RF484	-	249 (252.8)	-	3.0	R	-	-220	RNAV1
TF	RF486	-	249 (252.8)	-	3.0	-	+5500FT (1)	-210	RNAV1
TF	RF487	-	339 (342.7)	-	5.0	R	+4500FT (1)	-210	RNAV1
TF	ODULA	-	339 (342.7)	-	3.8	-	+3500FT	AT 200	RNAV1

**REMARKS**

(1) MEA 2500FT ATC Discretion

(2) MEA 3500FT ATC Discretion

## HOLDING RNAV 1

Path Terminator	Waypoint Identifier	Inbound Course °M (°T)	Leg Distance (NM) (1)	Timing(min.)/ Waypoint Distance (NM) (2)	Turn Direction	Minimum Altitude (FT)	Maximum Altitude (FL)	Speed Limit (kt)	Magnetic Variation (°)	Navigation Specification
HM	ANAXA	069 (072.0)	4	-/5.5	R	5000	-	-210	3	RNAV1
HM	DESIK	236 (239.0)	6	-/8.2	R	FL130	-	-230	3	RNAV1
HM	ELKAP	090 (093.0)	8	-/10.8	R	FL190	-	-240	3	RNAV1
HM	ESATU	159 (162.0)	4	-/5.5	L	6000	-	-230	3	RNAV1
HM	ESINO	035 (038.0)	4	-/5.5	R	6000	-	-230	3	RNAV1
HM	GOPOL	096 (099.0)	5	-/7	R	6000	-	-230	3	RNAV1
HM	LAT	267 (270.0)	5	-/7	R	FL90	-	-230	3	RNAV1
HM	NEVUX	339 (342.0)	4	-/5.5	L	2500	-	-200	3	RNAV1
HM	NIBUG	250 (253.0)	4	-/5.5	L	6000	-	-210	3	RNAV1
HM	ODULA	339 (342.0)	4	-/5.5	R	2500	-	-200	3	RNAV1
HM	RAVUX	146 (149.0)	5	-/7	R	FL100	-	-230	3	RNAV1
HM	RITEB	161 (164.0)	5	-/7	R	FL110	-	-220	3	RNAV1
HM	VALMA	066 (069.0)	4	-/5.5	L	6000	-	-230	3	RNAV1
HM	XIBIL (ATC DISCRETION)	120 (123.0)	8	-/10.8	L	FL190	-	-240	3	RNAV1

(1) RNAV system with holding functionality

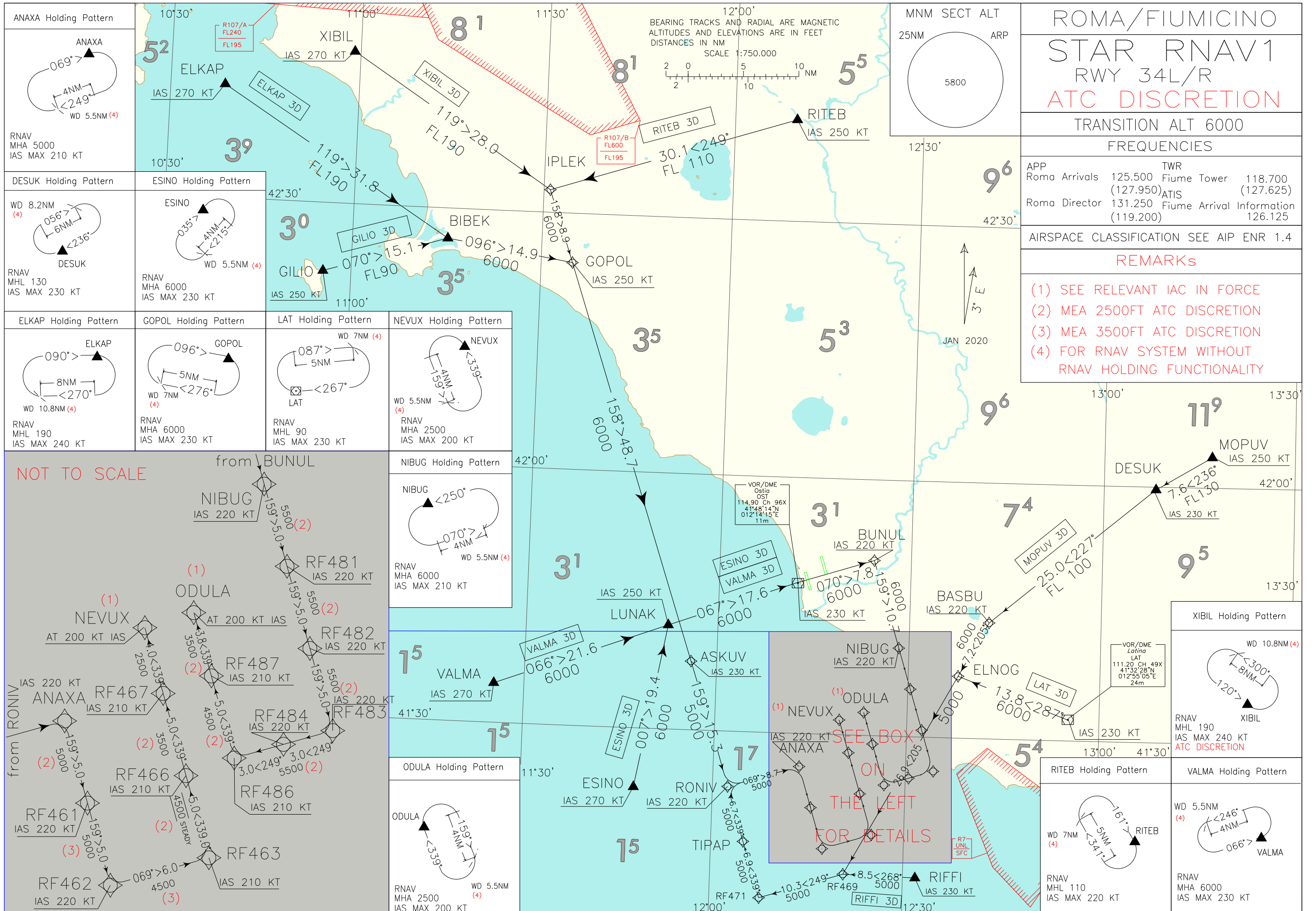
(2) RNAV system without holding functionality

**WAYPOINT LIST**

<b>Waypoint Identifier</b>	<b>Coordinates</b>
RF461	41°21'21.1"N 012°15'23.1"E
RF462	41°16'34.7"N 012°17'21.8"E
RF463	41°18'21.8"N 012°24'57.7"E
RF466	41°23'08.4"N 012°22'59.4"E
RF467	41°27'54.9"N 012°21'00.8"E
RF481	41°35'35.1"N 012°30'23.3"E
RF482	41°30'46.4"N 012°32'21.5"E
RF483	41°26'01.6"N 012°34'19.3"E
RF484	41°25'08.4"N 012°30'30.7"E
RF486	41°24'15.1"N 012°26'42.3"E
RF487	41°29'01.7"N 012°24'43.9"E

Intenzionalmente bianca

*Intentionally left blank*



ROMA/FIUMICINO	
STAR RNAV1	
RWY 34L/R	
ATC DISCRETION	
TRANSITION ALT 6000	
FREQUENCIES	
APP Roma Arrivals Roma Director (127.950) (119.200)	TWR Fiume Tower ATIS Fiume Arrival Information (127.625) 126.125
AIRSPACE CLASSIFICATION SEE AIP ENR 1.4	
REMARKS	
(1) SEE RELEVANT IAC IN FORCE (2) MEA 2500FT ATC DISCRETION (3) MEA 3500FT ATC DISCRETION (4) FOR RNAV SYSTEM WITHOUT RNAV HOLDING FUNCTIONALITY	

CHANGE: MAGNETIC VARIATION UPDATED; RWY34C WITHDRAWN and RENUMBERED PAGE

**ROMA FIUMICINO STAR RNAV 1**  
**RWY 34 L/R ATC DISCRETION**

**ELKAP 3D**

Path Terminator	Waypoint Name	Fly Over	Course °M (°T)	Magnetic Variation	Distance (NM)	Turn Direction	Altitude (ft)	Speed Limit (Kt)	Navigation Specification
IF	ELKAP	-	-	-	-	-	-	-270	RNAV1
TF	BIBEK	-	119 (121.8)	-	31.8	-	+FL 190	-	RNAV1
TF	GOPOL	-	096 (098.6)	-	14.9	-	-	-250	RNAV1
TF	ASKUV	-	158 (161.1)	-	48.7	-	+6000FT	-230	RNAV1
TF	RONIV	-	159 (161.7)	-	15.3	-	-	-220	RNAV1
TF	ANAXA	-	069 (072.5)	-	8.7	L	-	-220	RNAV1
TF	RF461	-	159 (162.6)	-	5.0	R	+5000FT (1)	-220	RNAV1
TF	RF462	-	159 (162.6)	-	5.0	-	+5000FT (2)	-220	RNAV1
TF	RF463	-	069 (072.7)	-	6.0	L	+4500FT (2)	-210	RNAV1
TF	RF466	-	339 (342.7)	-	5.0	L	4500FT STEADY (1)	-210	RNAV1
TF	RF467	-	339 (342.7)	-	5.0	-	+3500FT (1)	-210	RNAV1
TF	NEVUX	-	339 (342.7)	-	4.0	-	+2500FT	AT 200	RNAV1

**ESINO 3D**

Path Terminator	Waypoint Name	Fly Over	Course °M (°T)	Magnetic Variation	Distance (NM)	Turn Direction	Altitude (ft)	Speed Limit (Kt)	Navigation Specification
IF	ESINO	-	-	-	-	-	-	-270	RNAV1
TF	LUNAK	-	007 (010.1)	-	19.4	-	-	-250	RNAV1
TF	OST	-	067 (069.8)	-	17.6	-	-	-230	RNAV1
TF	BUNUL	-	070 (072.7)	-	7.8	-	-	-220	RNAV1
TF	NIBUG	-	159 (162.7)	-	10.7	R	+6000FT	-220	RNAV1
TF	RF481	-	159 (162.8)	-	5.0	-	-	-220	RNAV1
TF	RF482	-	159 (162.9)	-	5.0	-	-	-220	RNAV1
TF	RF483	-	159 (162.7)	-	5.0	-	-	-220	RNAV1
TF	RF484	-	249 (252.8)	-	3.0	R	+5500FT (1)	-220	RNAV1
TF	RF486	-	249 (252.8)	-	3.0	-	-	-210	RNAV1
TF	RF487	-	339 (342.7)	-	5.0	R	+4500FT (1)	-210	RNAV1
TF	ODULA	-	339 (342.7)	-	3.8	-	+3500FT	AT 200	RNAV1

**GILIO 3D**

Path Terminator	Waypoint Name	Fly Over	Course °M (°T)	Magnetic Variation	Distance (NM)	Turn Direction	Altitude (ft)	Speed Limit (Kt)	Navigation Specification
IF	GILIO	-	-	-	-	-	-	-250	RNAV1
TF	BIBEK	-	070 (072.8)	-	15.1	-	+FL 90	-	RNAV1
TF	GOPOL	-	096 (098.6)	-	14.9	-	-	-	RNAV1
TF	ASKUV	-	158 (161.1)	-	48.7	-	+6000FT	-230	RNAV1
TF	RONIV	-	159 (161.7)	-	15.3	-	-	-220	RNAV1
TF	ANAXA	-	069 (072.5)	-	8.7	L	-	-220	RNAV1
TF	RF461	-	159 (162.6)	-	5.0	R	+5000FT (1)	-220	RNAV1
TF	RF462	-	159 (162.6)	-	5.0	-	+5000FT (2)	-220	RNAV1
TF	RF463	-	069 (072.7)	-	6.0	L	+4500FT (2)	-210	RNAV1
TF	RF466	-	339 (342.7)	-	5.0	L	4500FT STEADY (1)	-210	RNAV1
TF	RF467	-	339 (342.7)	-	5.0	-	+3500FT (1)	-210	RNAV1
TF	NEVUX	-	339 (342.7)	-	4.0	-	+2500FT	AT 200	RNAV1



**LAT 3D**

Path Terminator	Waypoint Name	Fly Over	Course °M (°T)	Magnetic Variation	Distance (NM)	Turn Direction	Altitude (ft)	Speed Limit (Kt)	Navigation Specification
IF	LAT	-	-	-	-	-	-	-230	RNAV1
TF	ELNOG	-	287 (290.4)	-	13.8	-	+6000FT	-	RNAV1
TF	RF469	-	205 (208.7)	-	26.9	-	+5000FT	-	RNAV1
TF	RF471	-	249 (252.7)	-	10.3	-	+5000FT	-	RNAV1
TF	TIPAP	-	339 (342.6)	-	6.9	R	+5000FT	-	RNAV1
TF	RONIV	-	339 (342.2)	-	6.7	-	+5000FT	-220	RNAV1
TF	ANAXA	-	069 (072.5)	-	8.7	R	+5000FT	-220	RNAV1
TF	RF461	-	159 (162.6)	-	5.0	R	+5000FT (1)	-220	RNAV1
TF	RF462	-	159 (162.6)	-	5.0	-	+5000FT (2)	-220	RNAV1
TF	RF463	-	069 (072.7)	-	6.0	L	+4500FT (2)	-210	RNAV1
TF	RF466	-	339 (342.7)	-	5.0	L	4500FT STEADY (1)	-210	RNAV1
TF	RF467	-	339 (342.7)	-	5.0	-	+3500FT (1)	-210	RNAV1
TF	NEVUX	-	339 (342.7)	-	4.0	-	+2500FT	AT 200	RNAV1

**MOPUV 3D**

Path Terminator	Waypoint Name	Fly Over	Course °M (°T)	Magnetic Variation	Distance (NM)	Turn Direction	Altitude (ft)	Speed Limit (Kt)	Navigation Specification
IF	MOPUV	-	-	-	-	-	-	-250	RNAV1
TF	DESUK	-	236 239.3	-	7.6	-	+FL 130	-230	RNAV1
TF	BASBU	-	227 (230.2)	-	25.0	-	+FL 100	-220	RNAV1
TF	ELNOG	-	205 (208.7)	-	7.2	-	+6000FT	-	RNAV1
TF	RF469	-	205 (208.7)	-	26.9	-	+5000FT	-	RNAV1
TF	RF471	-	249 (252.7)	-	10.3	-	+5000FT	-	RNAV1
TF	TIPAP	-	339 (342.6)	-	6.9	R	+5000FT	-	RNAV1
TF	RONIV	-	339 (342.2)	-	6.7	-	+5000FT	-220	RNAV1
TF	ANAXA	-	069 (072.5)	-	8.7	R	+5000FT	-220	RNAV1
TF	RF461	-	159 (162.6)	-	5.0	R	+5000FT (1)	-220	RNAV1
TF	RF462	-	159 (162.6)	-	5.0	-	+5000FT (2)	-220	RNAV1
TF	RF463	-	069 (072.7)	-	6.0	L	+4500FT (2)	-210	RNAV1
TF	RF466	-	339 (342.7)	-	5.0	L	4500FT STEADY (1)	-210	RNAV1
TF	RF467	-	339 (342.7)	-	5.0	-	+3500FT (1)	-210	RNAV1
TF	NEVUX	-	339 (342.7)	-	4.0	-	+2500FT	AT 200	RNAV1

**RIFFI 3D**

Path Terminator	Waypoint Name	Fly Over	Course °M (°T)	Magnetic Variation	Distance (NM)	Turn Direction	Altitude (ft)	Speed Limit (Kt)	Navigation Specification
IF	RIFFI	-	-	-	-	-	-	-230	RNAV1
TF	RF469	-	268 (271.2)	-	8.5	-	-	-	RNAV1
TF	RF471	-	249 (252.7)	-	10.3	-	-	-	RNAV1
TF	TIPAP	-	339 (342.6)	-	6.9	R	-	-	RNAV1
TF	RONIV	-	339 (342.2)	-	6.7	-	-	-220	RNAV1
TF	ANAXA	-	069 (072.5)	-	8.7	R	-	-220	RNAV1
TF	RF461	-	159 (162.6)	-	5.0	R	+5000FT (1)	-220	RNAV1
TF	RF462	-	159 (162.6)	-	5.0	-	+5000FT (2)	-220	RNAV1
TF	RF463	-	069 (072.7)	-	6.0	L	+4500FT (2)	-210	RNAV1
TF	RF466	-	339 (342.7)	-	5.0	L	4500FT STEADY (1)	-210	RNAV1
TF	RF467	-	339 (342.7)	-	5.0	-	+3500FT (1)	-210	RNAV1
TF	NEVUX	-	339 (342.7)	-	4.0	-	+2500FT	AT 200	RNAV1

**RITEB 3D**

Path Terminator	Waypoint Name	Fly Over	Course °M (°T)	Magnetic Variation	Distance (NM)	Turn Direction	Altitude (ft)	Speed Limit (Kt)	Navigation Specification
IF	RITEB	-	-	-	-	-	-	-250	RNAV1
TF	IPEK	-	249 (252.3)	-	30.1	-	+FL 110	-	RNAV1
TF	GOPOL	-	158 (160.8)	-	8.9	L	-	-	RNAV1
TF	ASKUV	-	158 (161.1)	-	48.7	-	+6000FT	-230	RNAV1
TF	RONIV	-	159 (161.7)	-	15.3	-	-	-220	RNAV1
TF	ANAXA	-	069 (072.5)	-	8.7	L	-	-220	RNAV1
TF	RF461	-	159 (162.6)	-	5.0	R	+5000FT (1)	-220	RNAV1
TF	RF462	-	159 (162.6)	-	5.0	-	+5000FT (2)	-220	RNAV1
TF	RF463	-	069 (072.7)	-	6.0	L	+4500FT (2)	-210	RNAV1
TF	RF466	-	339 (342.7)	-	5.0	L	4500FT STEADY (1)	-210	RNAV1
TF	RF467	-	339 (342.7)	-	5.0	-	+3500FT (1)	-210	RNAV1
TF	NEVUX	-	339 (342.7)	-	4.0	-	+2500FT	AT 200	RNAV1

**VALMA 3D**

Path Terminator	Waypoint Name	Fly Over	Course °M (°T)	Magnetic Variation	Distance (NM)	Turn Direction	Altitude (ft)	Speed Limit (Kt)	Navigation Specification
IF	VALMA	-	-	-	-	-	-	-270	RNAV1
TF	LUNAK	-	066 (069.3)	-	21.6	-	-	-250	RNAV1
TF	OST	-	067 (069.8)	-	17.6	-	-	-230	RNAV1
TF	BUNUL	-	070 (072.7)	-	7.8	-	-	-220	RNAV1
TF	NIBUG	-	159 (162.7)	-	10.7	R	+6000FT	-220	RNAV1
TF	RF481	-	159 (162.8)	-	5.0	-	-	-220	RNAV1
TF	RF482	-	159 (162.9)	-	5.0	-	-	-220	RNAV1
TF	RF483	-	159 (162.7)	-	5.0	-	-	-220	RNAV1
TF	RF484	-	249 (252.8)	-	3.0	R	+5500FT (1)	-220	RNAV1
TF	RF486	-	249 (252.8)	-	3.0	-	-	-210	RNAV1
TF	RF487	-	339 (342.7)	-	5.0	R	+4500FT (1)	-210	RNAV1
TF	ODULA	-	339 (342.7)	-	3.8	-	+3500FT	AT 200	RNAV1

**XIBIL 3D**

Path Terminator	Waypoint Name	Fly Over	Course °M (°T)	Magnetic Variation	Distance (NM)	Turn Direction	Altitude (ft)	Speed Limit (Kt)	Navigation Specification
IF	XIBIL	-	-	-	-	-	-	-270	RNAV1
TF	IPEK	-	119 (122.6)	-	28.0	-	FL 190	-	RNAV1
TF	GOPOL	-	158 (160.8)	-	8.9	-	-	-250	RNAV1
TF	ASKUV	-	158 (161.1)	-	48.7	-	+6000FT	-230	RNAV1
TF	RONIV	-	159 (161.7)	-	15.3	-	-	-220	RNAV1
TF	ANAXA	-	069 (072.5)	-	8.7	L	-	-220	RNAV1
TF	RF461	-	159 (162.6)	-	5.0	R	+5000FT (1)	-220	RNAV1
TF	RF462	-	159 (162.6)	-	5.0	-	+5000FT (2)	-220	RNAV1
TF	RF463	-	069 (072.7)	-	6.0	L	+4500FT (2)	-210	RNAV1
TF	RF466	-	339 (342.7)	-	5.0	L	4500FT STEADY (1)	-210	RNAV1
TF	RF467	-	339 (342.7)	-	5.0	-	+3500FT (1)	-210	RNAV1
TF	NEVUX	-	339 (342.7)	-	4.0	-	+2500FT	AT 200	RNAV1

**REMARKS**

- (1) MEA 2500FT ATC Discretion  
(2) MEA 3500FT ATC Discretion

## HOLDING RNAV 1

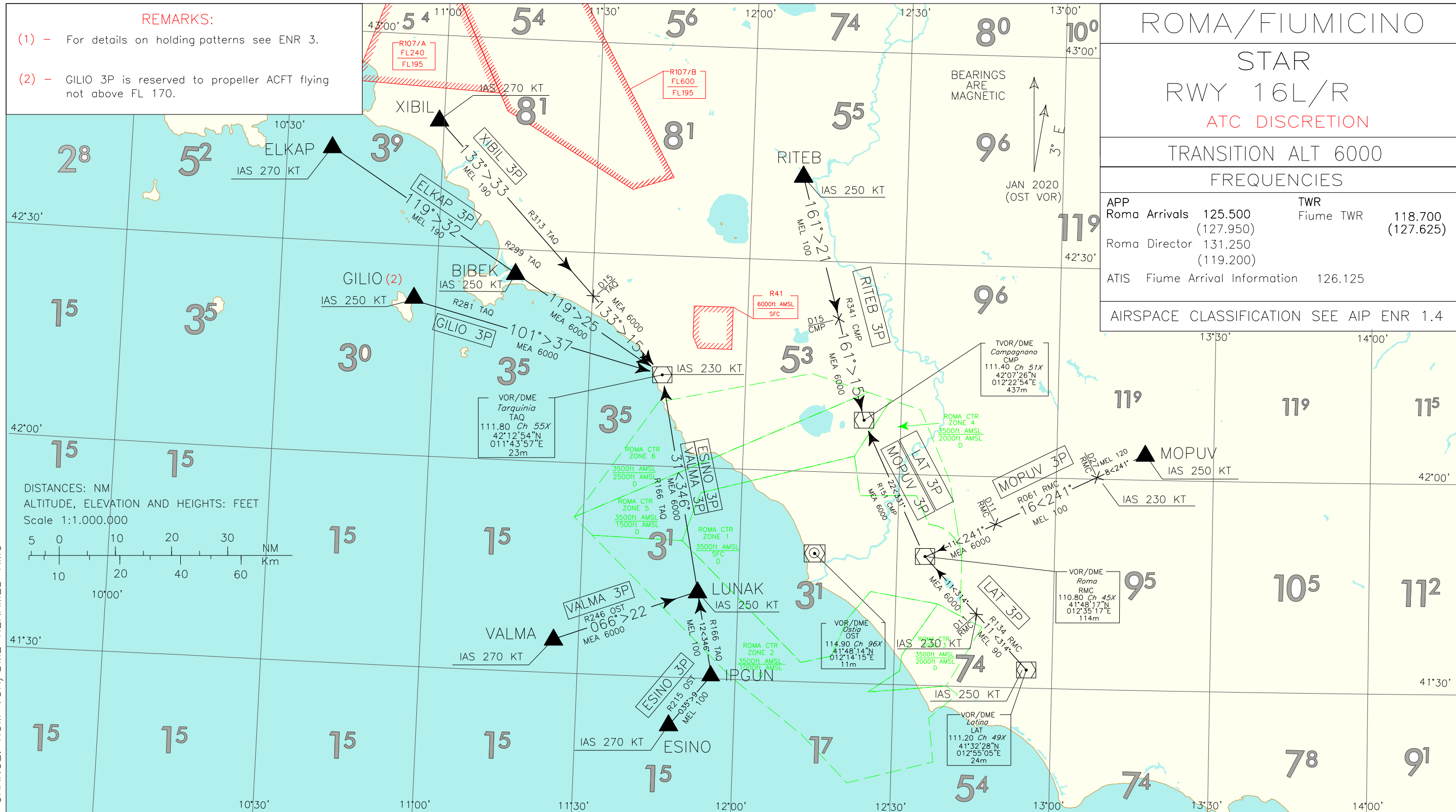
Path Terminator	Waypoint Identifier	Inbound Course °M (°T)	Leg Distance (NM) (1)	Timing(min.)/ Waypoint Distance (NM) (2)	Turn Direction	Minimum Altitude (FT)	Maximum Altitude (FL)	Speed Limit (kt)	Magnetic Variation (°)	Navigation Specification
HM	ANAXA	069 (072.0)	4	-/5.5	R	5000	-	-210	3	RNAV1
HM	DESUK	236 (239.0)	6	-/8.2	R	FL130	-	-230	3	RNAV1
HM	ELKAP	090 (093.0)	8	-/10.8	R	FL190	-	-240	3	RNAV1
HM	ESINO	035 (038.0)	4	-/5.5	R	6000	-	-230	3	RNAV1
HM	GOPOL	096 (099.0)	5	-/7	R	6000	-	-230	3	RNAV1
HM	LAT	267 (270.0)	5	-/7	R	FL90	-	-230	3	RNAV1
HM	NEVUX	339 (342.0)	4	-/5.5	L	2500	-	-200	3	RNAV1
HM	NIBUG	250 (253.0)	4	-/5.5	L	6000	-	-210	3	RNAV1
HM	ODULA	339 (342.0)	4	-/5.5	R	2500	-	-200	3	RNAV1
HM	RITEB	161 (164.0)	5	-/7	R	FL110	-	-220	3	RNAV1
HM	VALMA	066 (069.0)	4	-/5.5	L	6000	-	-230	3	RNAV1
HM	XIBIL (ATC DISCRETION)	120 (123.0)	8	-/10.8	L	FL190	-	-240	3	RNAV1

(1) RNAV system with holding functionality

(2) RNAV system without holding functionality

**WAYPOINT LIST**

<b>Waypoint Identifier</b>	<b>Coordinates</b>
RF461	41°21'21.1"N 012°15'23.1"E
RF462	41°16'34.7"N 012°17'21.8"E
RF463	41°18'21.8"N 012°24'57.7"E
RF466	41°23'08.4"N 012°22'59.4"E
RF467	41°27'54.9"N 012°21'00.8"E
RF481	41°35'35.1"N 012°30'23.3"E
RF482	41°30'46.4"N 012°32'21.5"E
RF483	41°26'01.6"N 012°34'19.3"E
RF484	41°25'08.4"N 012°30'30.7"E
RF486	41°24'15.1"N 012°26'42.3"E
RF487	41°29'01.7"N 012°24'43.9"E
RF469	41°13'39.3"N 012°20'43.4"E
RF471	41°10'35.6"N 012°07'45.7"E



CHANGE: ROM VOR/DME RENAMED RMC

CMP Holding Pattern	ESINO Holding Pattern	LAT Holding Pattern	RITEB Holding Pattern	TAQ Holding Pattern	VALMA Holding Pattern	MNM SECT ALT

**STAR RWY 16 L/R**  
**ATC DISCRETION****ELKAP 3P**

Proceed on TR 119° (RDL 299 TAQ VOR) bound to TAQ VOR/DME

MEL/MEA: ELKAP – BIBEK: FL190; BIBEK – TAQ VOR/DME: 6000FT

**ESINO 3P**

Proceed on TR 035° (RDL 215 OST VOR) bound to IPGUN then turn left on TR 346° (RDL 166 TAQ VOR) bound to TAQ VOR/DME

MEL/MEA: ESINO – LUNAK FL 100; LUNAK – TAQ VOR/DME: 6000 FT

**GILIO 3P**

Proceed on TR 101° (RDL 281 TAQ VOR) bound to TAQ VOR/DME

MEA: GILIO – TAQ VOR/DME: 6000 FT

Remark: Reserved to propeller ACFT flying not above FL 170

**LAT 3P**

Proceed on TR 314° (RDL 134 RMC VOR) bound to RMC VOR then proceed on TR 331° (RDL 151 CMP VOR) bound to CMP VOR/DME

MEL/MEA: LAT VOR/DME - INT RDL 134/11NM RMC VOR/DME: FL 90; INT RDL 134/11NM RMC VOR/DME – CMP VOR/DME: 6000 FT

**MOPUV 3P**

Proceed on TR 241° (RDL 061 RMC VOR) bound to RMC VOR then turn right on TR 331° (RDL 151 CMP VOR) bound to CMP VOR/DME

MEL/MEA: MOPUV – INT RDL 061/27NM RMC VOR/DME: FL 120; INT RDL 061/27NM RMC VOR/DME – INT RDL 061/11NM RMC VOR/DME: FL 100; INT RDL 061/11NM RMC VOR/DME – CMP VOR/DME: 6000 FT

**RITEB 3P**

Proceed on TR 161° (RDL 341 CMP VOR) bound to CMP VOR/DME

MEL/MEA: RITEB – INT RDL 341/15NM CMP VOR/DME: FL100; INT RDL 341/15NM CMP VOR/DME – CMP VOR/DME: 6000 FT

**XIBIL 3P**

Proceed on TR 133° (RDL 313 TAQ VOR) bound to TAQ VOR/DME

MEL/MEA: XIBIL – INT RDL 313/15NM TAQ VOR/DME: FL190; INT RDL 313/15NM TAQ VOR/DME – TAQ VOR/DME: 6000 FT

**VALMA 3P**

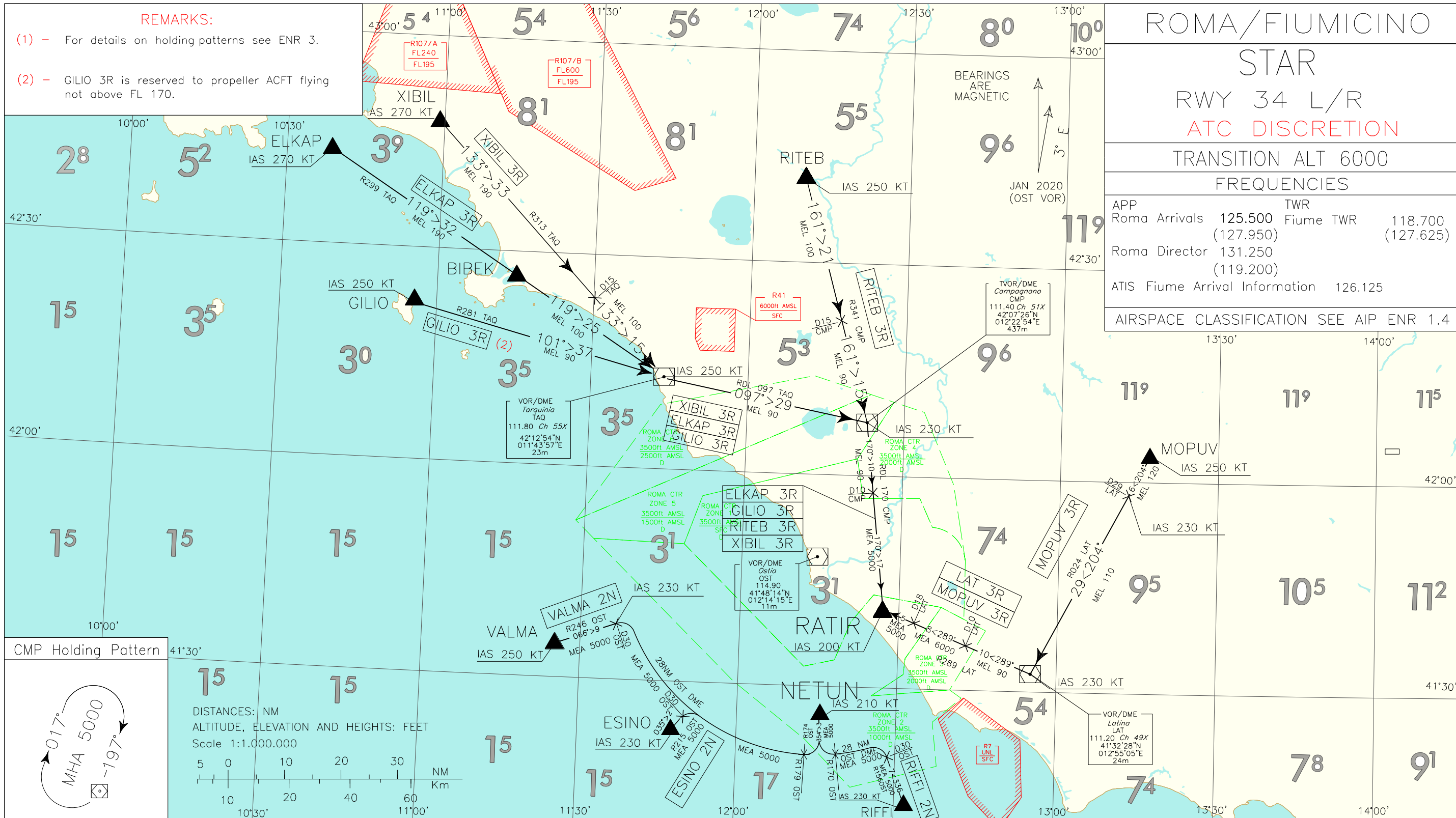
Proceed on TR 066° (RDL 246 OST VOR) bound to LUNAK then turn left on TR 346° (RDL 166 TAQ VOR) bound to TAQ VOR/DME

MEA: VALMA – TAQ VOR/DME: 6000 FT

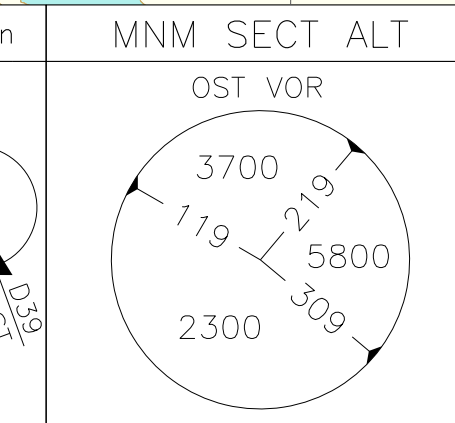
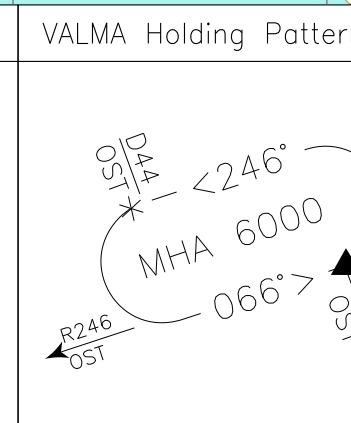
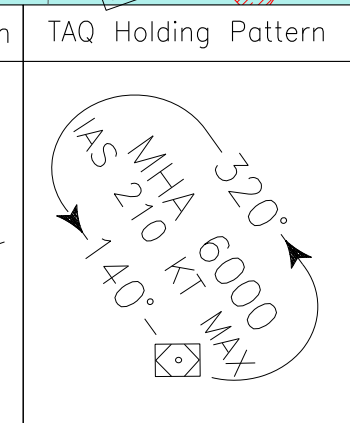
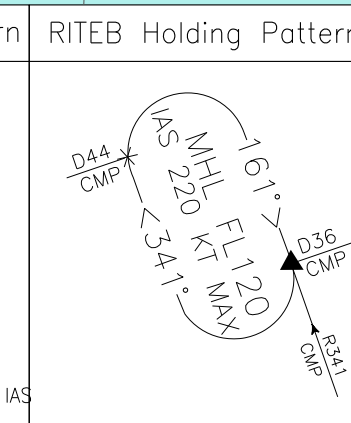
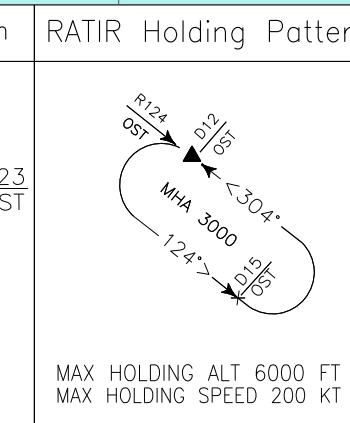
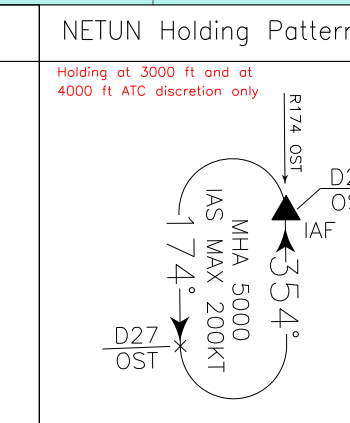
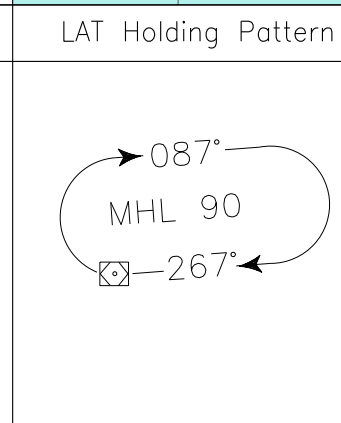
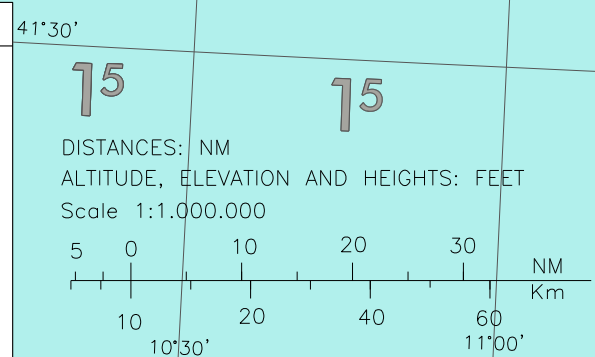
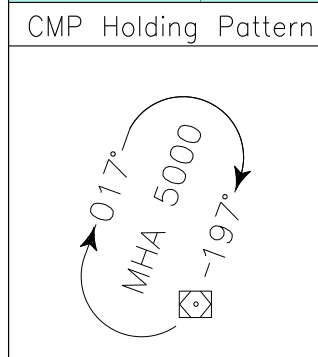


Intenzionalmente bianca

*Intentionally left blank*



CHANGE: RATIR HOLDING TRACK AMENDED



**STAR RWY 34 L/R****ATC DISCRETION****ELKAP 3R**

Proceed on TR 119° (RDL 299 TAQ VOR) bound to TAQ VOR, then turn left on TR 097° (RDL 097 TAQ VOR) bound to CMP VOR, then turn right on TR170° (RDL 170 CMP VOR) bound to RATIR

MEL/MEA: ELKAP – BIBEK: FL190; BIBEK – TAQ VOR/DME: FL100; TAQ VOR/DME – INT RDL 170/10 NM CMP VOR/DME: FL90; INT RDL 170/10 NM CMP VOR/DME – RATIR: 5000FT

**ESINO 2N**

Proceed on TR 035° (RDL 215 OST VOR) until 30NM OST DME, then turn right until joining ARC 28NM OST DME until crossing RDL 179 OST VOR, then turn left on TR 354° (RDL174 OST VOR) bound to NETUN

MEA: ESINO – NETUN: 5000 FT

**GILIO 3R**

Proceed on TR 101° (RDL 281 TAQ VOR) bound to TAQ VOR, then turn left on TR 097° (RDL 097 TAQ VOR) bound to CMP VOR, then turn right on TR170° (RDL 170 CMP VOR) bound to RATIR

MEL/MEA: GILIO – INT RDL 170/10 NM CMP VOR/DME: FL90; INT RDL 170/10 NM CMP VOR/DME – RATIR: 5000FT.

Remark: Reserved to propeller ACFT flying not above FL 170

**LAT 3R**

Proceed on TR 289° (RDL 289 LAT VOR) bound to RATIR

MEL/MEA: LAT VOR/DME – INT RDL 289/10NM LAT VOR/DME: FL 90; INT RDL 289/10NM LAT VOR/DME – INT RDL 289/18NM LAT VOR/DME; 6000 FT; INT RDL 289/18NM LAT VOR/DME – RATIR: 5000 FT

**MOPUV 3R**

Proceed on TR 204° (RDL 024 LAT VOR) bound to LAT VOR/DME then turn right on TR 289° (RDL 289 LAT VOR) bound to RATIR

MEL/MEA: MOPUV – INT RDL024/29NM LAT VOR/DME: FL 120; INT RDL024/29NM LAT VOR/DME – LAT VOR/DME: FL 110; LAT VOR/DME – INT RDL 289/10NM LAT VOR/DME: FL90; INT RDL 289/10NM LAT VOR/DME – INT RDL 289/18NM LAT VOR/DME: 6000FT; INT RDL 289/18NM LAT VOR/DME – RATIR: 5000FT

**RIFFI 2N**

Proceed on TR 336° (RDL 156 OST VOR) until 30NM OST DME, then turn left until joining ARC 28NM OST DME until crossing RDL 170 OST VOR, then turn right on TR 354° (RDL174 OST VOR) bound to NETUN

MEA: RIFFI – NETUN: 5000 FT

**RITEB 3R**

Proceed on TR 161° (RDL 341 CMP VOR) bound to CMP VOR/DME, then turn right on TR170° (RDL 170 CMP VOR) bound to RATIR

MEL/MEA: RITEB – INT RDL 341/15NM CMP VOR/DME: FL100; INT RDL 341/15NM CMP VOR/DME – INT RDL 170/10 NM CMP VOR/DME: FL90; INT RDL 170/10 NM CMP VOR/DME – RATIR: 5000FT.

**VALMA 2N**

Proceed on TR 066° (RDL 246 OST VOR) until 30NM OST DME, then turn right until joining ARC 28NM OST DME until crossing RDL 179 OST VOR, then turn left on TR 354° (RDL174 OST VOR) bound to NETUN.

MEA: VALMA – NETUN: 5000 FT

**XIBIL 3R**

Proceed on TR 133° (RDL 313 TAQ VOR) bound to TAQ VOR, then turn left on TR 097° (RDL 097 TAQ VOR) bound to CMP VOR, then turn right on TR170° (RDL 170 CMP VOR) bound to RATIR

MEL/MEA: XIBIL – INT RDL 313/15 NM TAQ VOR/DME: FL190; INT RDL 313/15 NM TAQ VOR/DME – TAQ VOR/DME: FL100; TAQ VOR/DME – INT RDL 170/10 NM CMP VOR/DME: FL90; INT RDL 170/10 NM CMP VOR/DME – RATIR: 5000FT

Intenzionalmente bianca

*Intentionally left blank*

# ROMA/FIUMICINO

## STAR CMP/TAQ

RWY 07/25

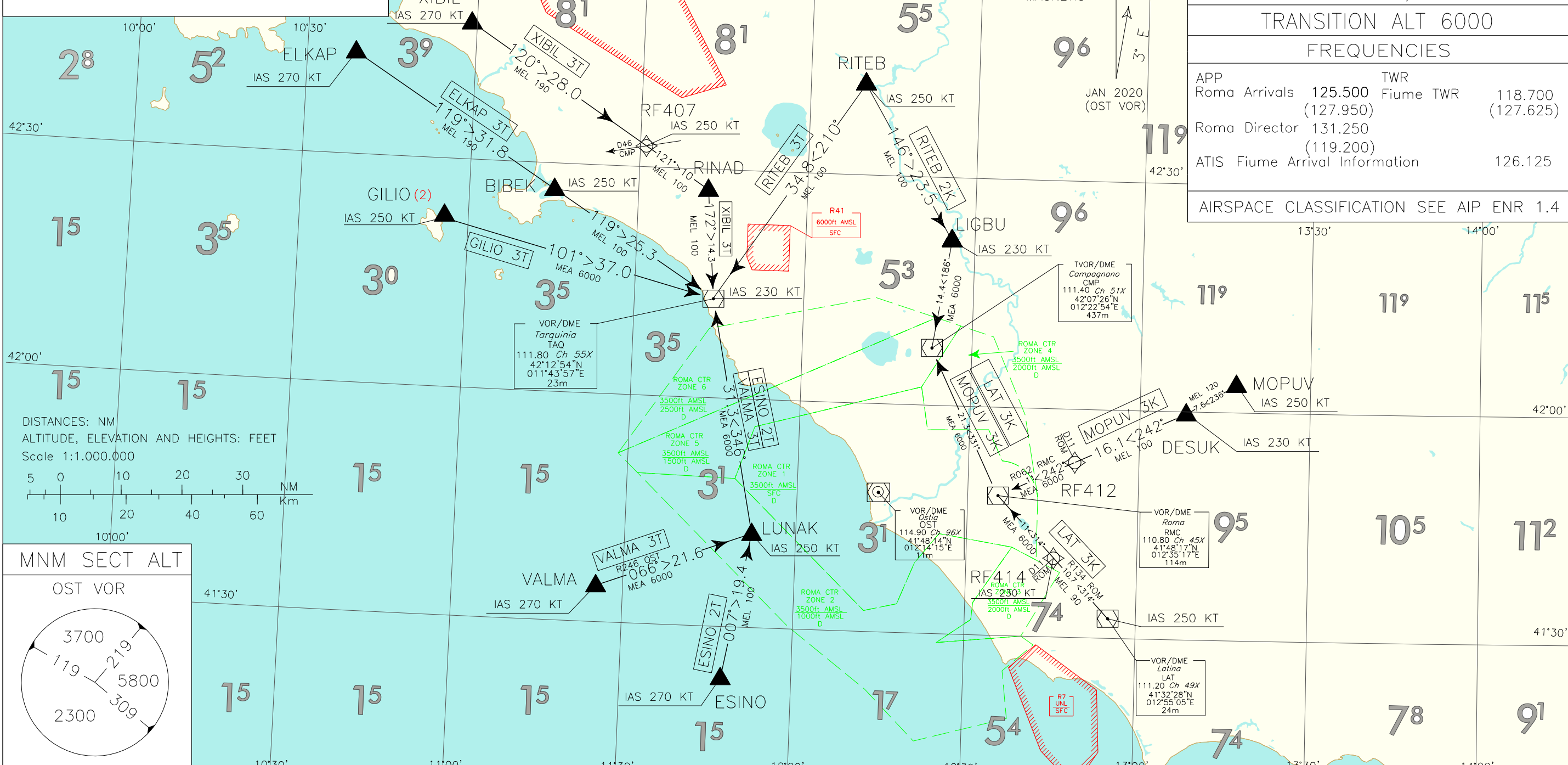
TRANSITION ALT 6000

### FREQUENCIES

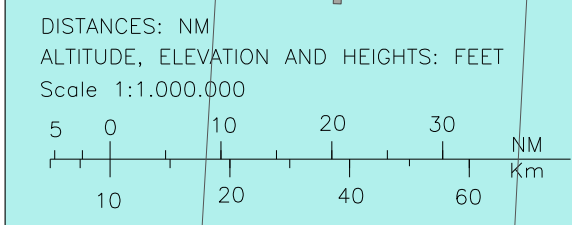
APP	TWR	
Roma Arrivals	125.500	Fiume TWR
	(127.950)	118.700
		(127.625)
Roma Director	131.250	
	(119.200)	
ATIS	Fiume Arrival Information	126.125

AIRSPACE CLASSIFICATION SEE AIP ENR 1.4

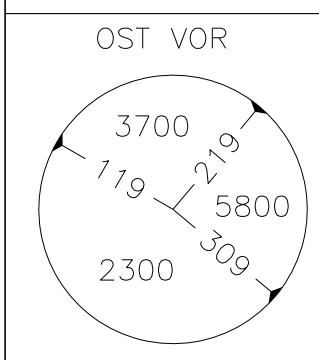
- REMARKS:**
- (1) - For details on holding patterns see ENR 3. For compulsory STARs: see IACs in force.
  - (2) - GILIO 3T is reserved to propeller ACFT flying not above FL 170.



CHANGE: ROM VOR/DME RENAMEND RMC



### MNM SECT ALT



BIBEK Holding Pattern	CMP Holding Pattern	ESINO Holding Pattern	LAT Holding Pattern	RINAD Holding Pattern	RITEB Holding Pattern	TAQ Holding Pattern	VALMA Holding Pattern

**STAR CMP/TAQ RWY 07/25****ELKAP 3T**

Proceed on TR 119° (RDL 299 TAQ VOR) bound to TAQ VOR.

MEL: ELKAP – BIBEK: FL190; BIBEK – TAQ VOR/DME: FL 100

Path Terminator	Waypoint Identifier	Fly Over	Course °M(°T)	Magnetic Variation	Distance (NM)	Turn Direction	Altitude (ft)	Speed Limit (kt)	Navigation Specification
IF	ELKAP	-	-	-	-	-	-	-270	Conventional/ RNAV1
TF	BIBEK	-	119 (121.8)	-	31.8	-	+FL190	-250	Conventional/ RNAV1
TF	TAQ	-	119° (122.2)	-	25.3	-	+FL100	-230	Conventional/ RNAV1

**ESINO 2T**

Path Terminator	Waypoint Identifier	Fly Over	Course °M(°T)	Magnetic Variation	Distance (NM)	Turn Direction	Altitude (ft)	Speed Limit (kt)	Navigation Specification
IF	ESINO	-	-	-	-	-	-	-270	RNAV1
TF	LUNAK	-	007 (010.1)	-	19.4	-	+FL 100	-250	RNAV1
TF	TAQ	-	346 (348.7)	-	31.3	-	+6000FT	-230	RNAV1

**GILIO 3T**

Proceed on TR 101° (RDL 281 TAQ VOR) bound to TAQ VOR.

MEA: GILIO – TAQ VOR/DME: 6000 FT

Path Terminator	Waypoint Identifier	Fly Over	Course °M(°T)	Magnetic Variation	Distance (NM)	Turn Direction	Altitude (ft)	Speed Limit (kt)	Navigation Specification
IF	GILIO	-	-	-	-	-	-	-250	Conventional/ RNAV1
TF	TAQ	-	101 (103.9)	-	37.0	-	+6000FT	-230	Conventional/ RNAV1

Remark: RESERVED TO PROPELLER ACFT FLYING NOT ABOVE FL 170

**LAT 3K**

Proceed on TR 314° (RDL 134 RMC VOR) bound to RMC VOR then proceed on TR 331° (RDL 151 CMP VOR) bound to CMP VOR.

MEL/MEA: LAT VOR/DME – INT RDL 134/11NM RMC VOR/DME: FL 90; INT RDL 134/11NM RMC VOR/DME – CMP VOR/DME: 6000 FT

Path Terminator	Waypoint Identifier	Fly Over	Course °M(°T)	Magnetic Variation	Distance (NM)	Turn Direction	Altitude (ft)	Speed Limit (kt)	Navigation Specification
IF	LAT	-	-	-	-	-	-	-250	Conventional/ RNAV1
TF	RF414	-	314 (316.9)	-	10.7	-	+FL90	-230	Conventional/ RNAV1
TF	RMC	-	314 (316.8)	-	11.0	-	+6000FT	-	Conventional/ RNAV1
TF	CMP	-	331 (334.3)	-	21.3	-	+6000FT	-	Conventional/ RNAV1

**MOPUV 3K**

Proceed along TR 236° until DESUK then proceed on TR 242° (RDL 062 RMC VOR) bound to RMC VOR then turn right on TR 331° (RDL 151 CMP VOR) bound to CMP VOR.

MEL/MEA: MOPUV – DESUK: FL 120; DESUK – INT RDL 062/11NM RMC VOR/DME: FL 100; INT RDL 062/11NM RMC VOR/DME – CMP VOR/DME: 6000 FT

Path Terminator	Waypoint Identifier	Fly Over	Course °M(°T)	Magnetic Variation	Distance (NM)	Turn Direction	Altitude (ft)	Speed Limit (kt)	Navigation Specification
IF	MOPUV	-	-	-	-	-	-	-250	Conventional/ RNAV1
TF	DESUK	-	236 (239.3)	-	7.6	-	+FL120	-230	Conventional/ RNAV1
TF	RF412	-	242 (245.3)	-	16.1	-	+FL100	-	Conventional/ RNAV1
TF	RMC	-	242 (245.1)	-	11.0	-	+6000FT	-	Conventional/ RNAV1
TF	CMP	-	331 (334.3)	-	21.3	-	+6000FT	-	Conventional/ RNAV1

**RITEB 2K**

Path Terminator	Waypoint Identifier	Fly Over	Course °M(°T)	Magnetic Variation	Distance (NM)	Turn Direction	Altitude (ft)	Speed Limit (kt)	Navigation Specification
IF	RITEB	-	-	-	-	-	-	-250	RNAV1
TF	LIGBU	-	146 (149.4)	-	23.5	-	+FL100	-230	RNAV1
TF	CMP	-	186 (189.1)	-	14.4	-	+6000FT	-	RNAV1

**RITEB 3T**

Proceed on TR 210° (RDL 030 TAQ VOR) bound to TAQ VOR.

MEL: RITEB – TAQ VOR/DME: FL 100

Path Terminator	Waypoint Identifier	Fly Over	Course °M(°T)	Magnetic Variation	Distance (NM)	Turn Direction	Altitude (ft)	Speed Limit (kt)	Navigation Specification
IF	RITEB	-	-	-	-	-	-	-250	Conventional/ RNAV1
TF	TAQ	-	210 (213.6)	-	34.8	-	+FL100	-230	Conventional/ RNAV1

**XIBIL 3T**

Proceed along TR 120° until RINAD then turn right on TR 172° (RDL 352 TAQ VOR) bound to TAQ VOR.

MEL: XIBIL – INT RDL 300/D46 CMP VOR/DME: FL190; INT RDL 300/D46 CMP VOR/DME – TAQ VOR/DME: FL 100

Path Terminator	Waypoint Identifier	Fly Over	Course °M(°T)	Magnetic Variation	Distance (NM)	Turn Direction	Altitude (ft)	Speed Limit (kt)	Navigation Specification
IF	XIBIL	-	-	-	-	-	-	-270	Conventional/ RNAV1
TF	RF407	-	120 (122.6)	-	28.0	-	+FL190	-250	Conventional/ RNAV1
TF	RINAD	-	120 (122.9)	-	10.0	-	+FL100	-	Conventional/ RNAV1
TF	TAQ	-	172 (175.2)	-	14.3	-	+FL100	-230	Conventional/ RNAV1

**VALMA 3T**

Proceed on TR 066° (RDL 246 OST VOR) bound to LUNAK then turn right on TR 346° (RDL 166 TAQ VOR) bound to TAQ VOR/DME.

MEA: VALMA – TAQ VOR/DME: 6000 FT

Path Terminator	Waypoint Identifier	Fly Over	Course °M(°T)	Magnetic Variation	Distance (NM)	Turn Direction	Altitude (ft)	Speed Limit (kt)	Navigation Specification
IF	VALMA	-	-	-	-	-	-	-270	Conventional/ RNAV1
TF	LUNAK	-	066 (069.4)	-	21.6	-	+6000FT	-250	Conventional/ RNAV1
TF	TAQ	-	346 (348.7)	-	31.3	-	+6000FT	-230	Conventional/ RNAV1

**WAYPOINT LIST**

Waypoint Identifier	Coordinates
RF407	42°32'38"6N 011°31'00"3E
RF412	41°52'55"9N 012°48'37"2E
RF414	41°40'15"6N 012°45'21"2E



Intenzionalmente bianca

*Intentionally left blank*