

CHANGE: ROM VOR/DME RENAMED RMC

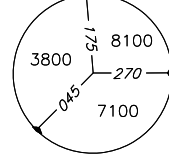
ENAV - Roma

AIAC effective date 11 AUG 2022 (A7/22)

FREQUENCIES

TWR Ciampino TWR	120.500 (119.400)
APP Roma Departures	130.900 134.200
Roma Director	131.250
ATIS Ciampino Arrival and Departure Information	122.425

MNM SECT ALT RMC VOR



12°15'

253

12°15'

VOR/DME Ostia OST
114.90 Ch 96X
41°48'14"N
012°14'15"E
11m

LEGEND

- ← - - - SID ATC DISCRETION
- ← - - - SID

RATIR 7A MCA as directed by ATC
PEMAR 7A and OKUNO 7G
MCA 3000

427

JAN 2010 (OST VOR)

12°30'

NDB Urbe
URB 285.00
41°56'41"N
012°29'24"E

MCA 3000 (3000 steady for URB 7A only)

489

VOR/DME Roma RMC
110.80 Ch 45X
41°48'17"N
012°35'17"E
114m

T.A.1000 FT (not later than D2.5 RMC DME)

3136

3081

MCA 5000 RA501

PEMAR 7A OKUNO 7G

1001

2008

3999

PEMAR 7A OKUNO 7G

SID

RWY 15

ROMA/CIAMPINO
TRANSITION ALT 6000

AD 2 LIRA 6-1

AIP - Italia

NOT TO SCALE

42°00'

12°30'

2 0 5 10 KM

SCALE 1:250 000

NM

12°45'

12°45'

42°00'

41°45'

12°15'

12°30'

12°45'

41°45'

12°45'

42°00'

MEL 110

MEL 140

OKUNO 7G

OKUNO 7G

OKUNO 7G

OKUNO 7G

OKUNO 7G

OKUNO 7G

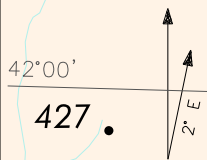
OKUNO 7G

OKUNO 7G

OKUNO 7G

OKUNO 7G

OKUNO 7G



OST 7C

OST 7A

OST 7B

OST 7C

OST 7A

OST 7B

OST 7C

OST 7A

OST 7B

OST 7C

OST 7A

OST 7B

OST 7C

OST 7A

OST 7B

OST 7C

OST 7A

OST 7B

OST 7C

OST 7A

OST 7B

OST 7C

OST 7A

OST 7B

OST 7C

OST 7A

OST 7B

OST 7C

OST 7A

OST 7B

OST 7C

OST 7A

OST 7B

OST 7C

OST 7A

OST 7B

OST 7C

OST 7A

OST 7B

OST 7C

OST 7A

OST 7B

OST 7C

OST 7A

OST 7B

OST 7C

OST 7A

OST 7B

OST 7C

OST 7A

OST 7B

OST 7C

OST 7A

OST 7B

OST 7C

OST 7A

OST 7B

OST 7C

OST 7A

OST 7B

OST 7C

OST 7A

OST 7B

OST 7C

OST 7A

OST 7B

OST 7C

OST 7A

OST 7B

OST 7C

OST 7A

OST 7B

OST 7C

OST 7A

OST 7B

OST 7C

OST 7A

OST 7B

OST 7C

OST 7A

OST 7B

OST 7C

OST 7A

OST 7B

OST 7C

OST 7A

OST 7B

OST 7C

OST 7A

OST 7B

OST 7C

OST 7A

OST 7B

OST 7C

OST 7A

OST 7B

OST 7C

OST 7A

OST 7B

OST 7C

OST 7A

OST 7B

OST 7C

OST 7A

OST 7B

OST 7C

OST 7A

OST 7B

OST 7C

OST 7A

OST 7B

OST 7C

OST 7A

OST 7B

OST 7C

OST 7A

OST 7B

OST 7C

OST 7A

OST 7B

OST 7C

OST 7A

OST 7B

OST 7C

OST 7A

OST 7B

OST 7C

OST 7A

OST 7B

OST 7C

OST 7A

OST 7B

OST 7C

OST 7A

OST 7B

OST 7C

OST 7A

OST 7B

OST 7C

OST 7A

OST 7B

OST 7C

OST 7A

OST 7B

OST 7C

OST 7A

OST 7B

OST 7C

OST 7A

OST 7B

OST 7C

OST 7A

OST 7B

OST 7C

OST 7A

OST 7B

OST 7C

OST 7A

OST 7B

OST 7C

OST 7A

OST 7B

OST 7C

OST 7A

OST 7B

OST 7C

OST 7A

OST 7B

OST 7C

OST 7A

OST 7B

OST 7C

OST 7A

OST 7B

OST 7C

OST 7A

OST 7B

OST 7C

OST 7A

OST 7B

OST 7C

OST 7A

OST 7B

OST 7C

OST 7A

OST 7B

OST 7C

OST 7A

OST 7B

OST 7C

OST 7A

OST 7B

OST 7C

OST 7A

OST 7B

OST 7C

OST 7A

OST 7B

OST 7C

OST 7A

OST 7B

OST 7C

OST 7A

OST 7B

OST 7C

OST 7A

OST 7B

OST 7C

OST 7A

OST 7B

OST 7C

OST 7A

INITIAL CLIMB PROCEDURES

After take-off, crossing 1000 ft, turn right to join the assigned SID

REMARKS

1. Right turn after take-off shall be executed not later than 2.5 NM RMC DME.
2. Minimum Climb gradient: 7% (425 ft/NM) due to obstacles.
3. IAS MAX during turn 210 kt. Bank angle 25° or rate of turn 3°/s, whichever requires the lesser bank.

OST 7A

Initial climb procedure executed proceed on TR 284° to intercept and follow RDL104 OST VOR bound to OST VOR climbing to the assigned level.

MCA: RDL104/8NM OST VOR/DME: 3000FT; OST VOR: 5000FT

OST 7B

Initial climb procedure executed proceed on TR 307° to join RDL 087 OST VOR bound to OST VOR climbing to the assigned level.

MCA: Join RDL 087 OST VOR: 2000FT or al di sopra/or above; RDL087/7NM OST VOR/DME: 3000FT;
OST VOR : 5000FT

REMARK

Pilots are requested to strictly adhere to the above procedure.

OST 7C

Initial climb procedure executed proceed on TR 341° (RDL161 CMP VOR); at 17 NM CMP DME (RDL 074 OST VOR) turn left to join RDL 064 OST VOR bound to OST VOR climbing to the assigned level.

MCA: INT RDL161 CMP VOR/RDL 087 OST VOR: 2000FT; INT RDL 161/17 NM CMP VOR DME / RDL 074 OST VOR: 3000 FT; AKILI 4000 FT; OST VOR: 5000FT

PEMAR 7A

Initial climb procedure executed intercept and follow RDL 217 RMC VOR bound to RATIR, then RA501 – RA502 – PEMAR.

MCA/MCL: RATIR, 3000FT, RA501, 5000FT, RA502, FL80 Steady, PEMAR FL110

Path Terminator	Waypoint Name	Fly Over	Track °Mag	Turn Direction	MEL/MEA	Speed Limit (IAS)	Recommended Navaid	Bearing/Range to Navaid	Navigation Performance
CF	RATIR	Y	217°	-	3000	240	RMC VOR/DME	217/9.7	B-RNAV-P- RNAV
DF	RA501	-	-	L	5000	-	-	-	B-RNAV-P- RNAV
TF	RA502	-	081°	-	FL80 STEADY	-	-	-	B-RNAV-P- RNAV
TF	PEMAR	-	008°	-	FL110	-	-	-	B-RNAV-P- RNAV

OKUNO 7G

Initial climb procedure executed intercept and follow RDL 217 RMC VOR bound to RATIR then RA501 – RA502 – PEMAR – OKUNO.

MCA/MCL: RATIR, 3000 FT; RA501, 5000FT, RA502, FL80 Steady, PEMAR FL110; OKUNO FL 140

Path Terminator	Waypoint Name	Fly Over	Track °Mag	Turn Direction	MEL/MEA	Speed Limit (IAS)	Recommended Navaid	Bearing/Range to Navaid	Navigation Performance
CF	RATIR	Y	217°	-	3000	240	RMC VOR/DME	217/9.7	B-RNAV-P-RNAV
DF	RA501	-	-	L	5000	-	-	-	B-RNAV-P-RNAV
TF	RA502	-	081°	-	FL80 STEADY	-	-	-	B-RNAV-P-RNAV
TF	PEMAR	-	008°	-	FL110	-	-	-	B-RNAV-P-RNAV
TF	OKUNO	-	024°	-	FL140	-	-	-	B-RNAV-P-RNAV

RATIR 7A

Initial climb procedure executed intercept and follow RDL 217 RMC VOR bound to RATIR. Cross RATIR as cleared by ATC.

URB 7A (ATC discretion)

Initial climb procedure executed proceed on TR 341° (RDL 161 CMP VOR) at 17 NM CMP DME (RDL 074 OST VOR) turn right bound to URB NDB.

MCA: INT RDL161 CMP VOR/RDL087 OST VOR 2000FT, INT RDL 161/17 NM CMP VOR DME/RDL074 OST VOR 3000 FT steady, URB NDB 3000 FT steady

REMARKS

- Clearances via SID OST will be followed by a second coded SID, according to Roma/Fiumicino SID.
- Clearances via SID URB and RATIR shall be followed by detailed instructions.
- All turns shall be executed:
 - IAS not exceeding 210 kt;
 - bank angle 25° or rate of turn not less 3° per second, whichever requires the lesser bank.
- Pilots shall adopt a minimum climb gradient in accordance with ICAO - Annex 6 provisions for a safe obstacles overflying. Such climb gradient shall be maintained in any foreseeable circumstance.

Waypoints Table formatted according ARINC 424 standards

Waypoint	Latitude	Longitude
RA501	N41413800	E012381470
RA502	N41422812	E012495002

SID DESCRIPTION**OST 8E**

After take-off turn left to intercept and follow RDL 330 RMC VOR/QDR 150° URB NDB (TR 330°) until 4 NM RMC DME (or 4NM ICIA DME), then turn left to join RDL 064 OST VOR (TR 244°) bound to OST VOR climbing to the assigned level.

MCA: RDL330 RMC VOR (OR QDR 150 DEG URB NDB)/4NM RMC DME (OR 4NM ICIA DME): 2000FT (1500FT FOR PISTONS ENGINE AIRCRAFT), RDL 064/012 NM OST VOR/DME (OR RDL 162/15 NM CMP VOR/DME): 3000FT, AKILI: 4000FT, OST VOR: 5000FT

RATIR 8C

After take-off turn left to intercept and follow RDL 330 RMC VOR/QDR 150° URB NDB (TR 330°) until 4 NM RMC DME (or 4NM ICIA DME), then turn left TR 185° (QDR 185° URB NDB) bound to RATIR.

MCA: RDL330 RMC VOR (OR QDR 150 DEG URB NDB)/4NM RMC DME (OR 4NM ICIA DME): 2000FT (1500FT FOR PISTONS ENGINE AIRCRAFT), QDR 185 DEG URB NDB: 3000FT STEADY, INT QDR 185 DEG URB NDB/RDL 097 OST VOR: 3000FT STEADY, RATIR AS CLEARED BY ATC

URB 8C

After take-off turn left to intercept and follow RDL 330 RMC VOR or QDR 150° URB NDB (TR 330°) to URB NDB.

MCA: RDL330 RMC VOR (OR QDR 150 DEG URB NDB)/4NM RMC DME (OR 4NM ICIA DME): 2000FT (1500FT FOR PISTONS ENGINE AIRCRAFT), URB NDB 3000FT STEADY

REMARKS

1. Clearances via SID URB and RATIR will be followed by detailed instructions.
2. All turns shall be executed:
 - IAS not exceeding 210 kt;
 - bank angle 25° or rate of turn not less than 3° per second whichever requires the lesser bank.
3. Pilots shall adopt a minimum climb gradient in accordance with ICAO-Annex 6 provisions for a safe obstacles overflying. Such climb gradient shall be maintained in any foreseeable circumstance. Suggested minimum climb gradient of 300 ft/NM until leaving 2000 ft.

Intenzionalmente bianca

Intentionally left blank

TSE

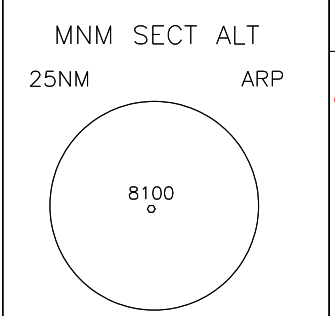
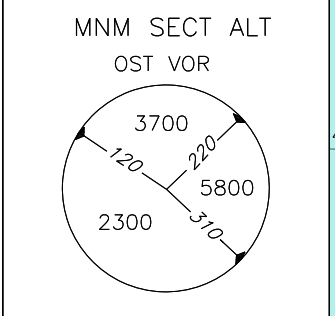
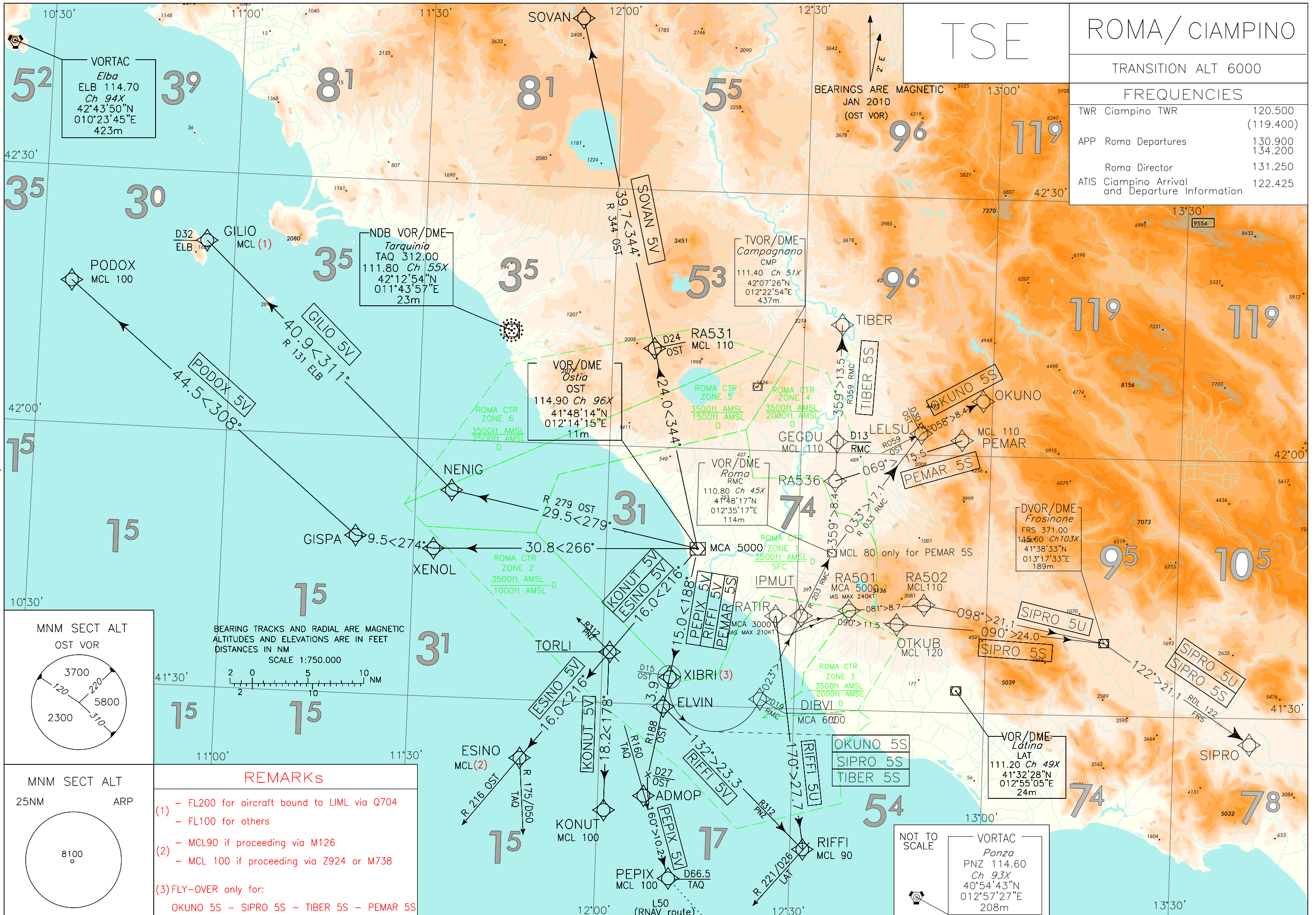
ROMA/CIAMPINO

TRANSITION ALT 6000

FREQUENCIES

TWR Ciampino TWR	120.500 (119.400)
APP Roma Departures	130.900 134.200
Roma Director	131.250
ATIS Ciampino Arrival and Departure Information	122.425

CHANGE: ROM VOR/DME RENAMED RMC



BEARING TRACKS AND RADIAL ARE MAGNETIC
ALTITUDES AND ELEVATIONS ARE IN FEET
DISTANCES IN NM
SCALE 1:750.000

- REMARKS**
- (1) - FL200 for aircraft bound to LIML via Q704
 - FL100 for others
 - (2) - MCL90 if proceeding via M126
 - MCL 100 if proceeding via Z924 or M738
 - (3) FLY-OVER only for:
OKUNO 5S - SIPRO 5S - TIBER 5S - PEMAR 5S

NOT TO SCALE

VORTAC
Ponza
PNZ 114.60
Ch 93X
40°54'43"N
012°57'27"E
208m

TSE DESCRIPTION**ESINO 5V**

Proceed on TR 216° (RDL 216 OST VOR) bound to ESINO (RDL 175/50NM TAQ VOR/DME).

MCA/MCL: OST VOR/DME 5000 FT; ESINO FL 90 (if proceeding via M126), FL 100 (if proceeding via Z924 or M738)

Path Terminator	Waypoint Identifier	Fly Over	Course °M(°T)	Magnetic Variation	Distance (NM)	Turn Direction	Altitude (ft)	Speed Limit (kt)	Navigation Specification
IF	OST	-	-	-	-	-	+5000	-	Conventional/ RNAV1
TF	TORLI	-	216° (217.5°)	-	16.0	-	-	-	Conventional/ RNAV1
TF	ESINO	-	216° (217.5°)	-	16.0	-	(*)	-	Conventional/ RNAV1

(*) FL90 if proceeding via M126; FL100 if proceeding via Z924 or M738

GILIO 5V

Proceed on TR 279° (RDL279 OST VOR) bound to NENIG then turn right and proceed on TR 311° (RDL131 ELB VOR) bound to GILIO.

MCA/MCL: OST VOR/DME 5000FT; GILIO (*)

Path Terminator	Waypoint Identifier	Fly Over	Course °M(°T)	Magnetic Variation	Distance (NM)	Turn Direction	Altitude (ft)	Speed Limit (kt)	Navigation Specification
IF	OST	-	-	-	-	-	+5000	-	Conventional/ RNAV1
TF	NENIG	-	279° (281.1°)	-	29.5	-	-	-	Conventional/ RNAV1
TF	GILIO	-	311° (313.0°)	-	40.9	-	(*)	-	Conventional/ RNAV1

(*) FL200 for aircraft bound to LIML via Q704/ FL100 for others

KONUT 5V

Proceed on RDL 216 OST VOR bound to TORLI, then turn left on TR 178° bound to KONUT.

MCA/MCL: OST VOR/DME 5000 FT; KONUT FL 100

Path Terminator	Waypoint Identifier	Fly Over	Course °M(°T)	Magnetic Variation	Distance (NM)	Turn Direction	Altitude (ft)	Speed Limit (kt)	Navigation Specification
IF	OST	-	-	-	-	-	+5000	-	Conventional/ RNAV1
TF	TORLI	-	216° (217.5°)	-	16.0	-	-	-	Conventional/ RNAV1
TF	KONUT	-	178° (179.3°)	-	18.2	-	+FL100	-	Conventional/ RNAV1

OKUNO 5S

Proceed on TR 188° (RDL 188 OST VOR) bound to XIBRI then turn left until joining RDL 203 RMC VOR (TR 023°) bound to RMC VOR. Leave RMC VOR on RDL 033 (TR 033°) until joining RDL 059 OST VOR (TR 059°) bound to OKUNO.

MCA/MCL: OST VOR 5000 FT; DIBVI 6000 FT; LELSU FL 110

Path Terminator	Waypoint Identifier	Fly Over	Course °M(°T)	Magnetic Variation	Distance (NM)	Turn Direction	Altitude (ft)	Speed Limit (kt)	Navigation Specification
IF	OST	-	-	-	-	-	+5000	-	Conventional/ RNAV1
TF	XIBRI	Y	188° (190.5)	-	15.0	-	-	-	Conventional/ RNAV1
DF	DIBVI	-	-	-	-	L	+6000	-	Conventional/ RNAV1
TF	RMC	-	023° (024.9)	-	19.0	-	-	-	Conventional/ RNAV1
TF	LELSU	-	033° (035.0)	-	17.1	-	+FL110	-	Conventional/ RNAV1
TF	OKUNO	-	058° (060.6)	-	8.4	-	-	-	Conventional/ RNAV1

PEPIX 5V

Proceed on RDL 188 OST VOR via XIBRI – ELVIN (RDL 188/18.9NM OST VOR/DME) until 27 NM OST DME, then turn left until joining RDL 160 TAQ VOR bound to PEPIX.

MCA/MCL: OST VOR/DME 5000 FT; PEPIX FL 100

Path Terminator	Waypoint Identifier	Fly Over	Course °M(°T)	Magnetic Variation	Distance (NM)	Turn Direction	Altitude (ft)	Speed Limit (kt)	Navigation Specification
IF	OST	-	-	-	-	-	+5000	-	Conventional/ RNAV1
TF	XIBRI	-	188° (190.5°)	-	15.0	-	-	-	Conventional/ RNAV1
TF	ELVIN	-	188° (190.5°)	-	3.9	-	-	-	Conventional/ RNAV1
TF	ADMOP	-	188° (190.5)	-	10.5	-	-	-	Conventional/ RNAV1
TF	PEPIX	-	160° (162.2°)	-	10.2	-	+FL100	-	Conventional/ RNAV1

PODOX 5V

Path Terminator	Waypoint Identifier	Fly Over	Course °M(°T)	Magnetic Variation	Distance (NM)	Turn Direction	Altitude (ft)	Speed Limit (kt)	Navigation Specification
IF	OST	-	-	-	-	-	+5000	-	RNAV1
TF	XENOL	-	266° (268.1°)	-	30.8	-	-	-	RNAV1
TF	GISPA	-	274° (276.1°)	-	9.5	-	-	-	RNAV1
TF	PODOX	-	308° (309.3°)	-	44.5	-	+FL100	-	RNAV1

RIFFI 5U

Path Terminator	Waypoint Identifier	Fly Over	Course °M(°T)	Magnetic Variation	Distance (NM)	Turn Direction	Altitude (ft)	Speed Limit (kt)	Navigation Specification
IF	RATIR	-	-	-	-	-	+3000	-	RNAV1
TF	RIFFI	-	170° (172.2°)	-	27.7	-	+FL90	-	RNAV1

RIFFI 5V

Proceed on RDL 188 OST VOR via XIBRI (RDL 188/15NM OST VOR/DME) – ELVIN then turn left on TR 132° (RDL 312 PNZ VOR) bound to RIFFI.

MCA/MCL: OST VOR/DME 5000 FT; RIFFI FL 90

Path Terminator	Waypoint Identifier	Fly Over	Course °M(°T)	Magnetic Variation	Distance (NM)	Turn Direction	Altitude (ft)	Speed Limit (kt)	Navigation Specification
IF	OST	-	-	-	-	-	+5000	-	Conventional/ RNAV1
TF	XIBRI	-	188° (190.5°)	-	15.0	-	-	-	Conventional/ RNAV1
TF	ELVIN	-	188° (190.5°)	-	3.9	-	-	-	Conventional/ RNAV1
TF	RIFFI	-	132° (133.8°)	-	23.3	-	+FL90	-	Conventional/ RNAV1

SIPRO 5S

Path Terminator	Waypoint Identifier	Fly Over	Course °M(°T)	Magnetic Variation	Distance (NM)	Turn Direction	Altitude (ft)	Speed Limit (kt)	Navigation Specification
IF	OST	-	-	-	-	-	+5000	-	RNAV1
TF	XIBRI	Y	188° (190.5)	-	15.0	-	-	-	RNAV1
DF	DIBVI	-	-	-	-	L	+6000	-	RNAV1
TF	IPMUT	-	023° (024.9)	-	10.0	-	-	-	RNAV1
TF	OTKUB	-	090° (092.5)	-	11.5	-	+FL120	-	RNAV1
TF	FRS	-	090° (092.6)	-	24.0	-	-	-	RNAV1
TF	SIPRO	-	122° (123.8)	-	21.1	-	-	-	RNAV1

SIPRO 5U

Path Terminator	Waypoint Identifier	Fly Over	Course °M(°T)	Magnetic Variation	Distance (NM)	Turn Direction	Altitude (ft)	Speed Limit (kt)	Navigation Specification
IF	RATIR	-	-	-	-	-	+3000	-210	RNAV1
DF	RA501	-	-	-	-	-	+5000	-240	RNAV1
TF	RA502	-	081° (083.5)	-	8.7	-	+FL110	-	RNAV1
TF	FRS	-	098° (100.5)	-	21.1	-	-	-	RNAV1
TF	SIPRO	-	122° (123.8)	-	21.1	-	-	-	RNAV1

SOVAN 5V

Proceed on TR 344° (RDL344 OST VOR) bound to SOVAN

MCA/MCL: OST VOR/DME 5000FT; RA531 (RDL344/24NM OST VOR/DME) FL110

Path Terminator	Waypoint Identifier	Fly Over	Course °M(°T)	Magnetic Variation	Distance (NM)	Turn Direction	Altitude (ft)	Speed Limit (kt)	Navigation Specification
IF	OST	-	-	-	-	-	+5000	-	Conventional/ RNAV1
TF	RA531	-	344° (346.0°)	-	24.0	-	+FL110	-	Conventional/ RNAV1
TF	SOVAN	-	344° (346.0°)	-	39.7	-	-	-	Conventional/ RNAV1

TIBER 5S

Proceed on TR 188° (RDL 188 OST VOR) bound to XIBRI then turn left until joining RDL 203 RMC VOR (TR 023°) bound to RMC VOR. Leave RMC VOR on RDL 359 (TR 359°) bound to TIBER.

MCA/MCL: OST VOR 5000 FT; DIBVI 6000 FT; GEGDU FL110

Path Terminator	Waypoint Identifier	Fly Over	Course °M(°T)	Magnetic Variation	Distance (NM)	Turn Direction	Altitude (ft)	Speed Limit (kt)	Navigation Specification
IF	OST	-	-	-	-	-	+5000	-	Conventional/ RNAV1
TF	XIBRI	Y	188° (190.5)	-	15.0	-	-	-	Conventional/ RNAV1
DF	DIBVI	-	-	-	-	L	+6000	-	Conventional/ RNAV1
TF	RMC	-	023° (024.9)	-	19.0	-	-	-	Conventional/ RNAV1
TF	GEGDU	-	359° (001.0)	-	13.0	-	+FL110	-	Conventional/ RNAV1
TF	TIBER	-	359° (001.1)	-	13.5	-	-	-	Conventional/ RNAV1

PEMAR 5S

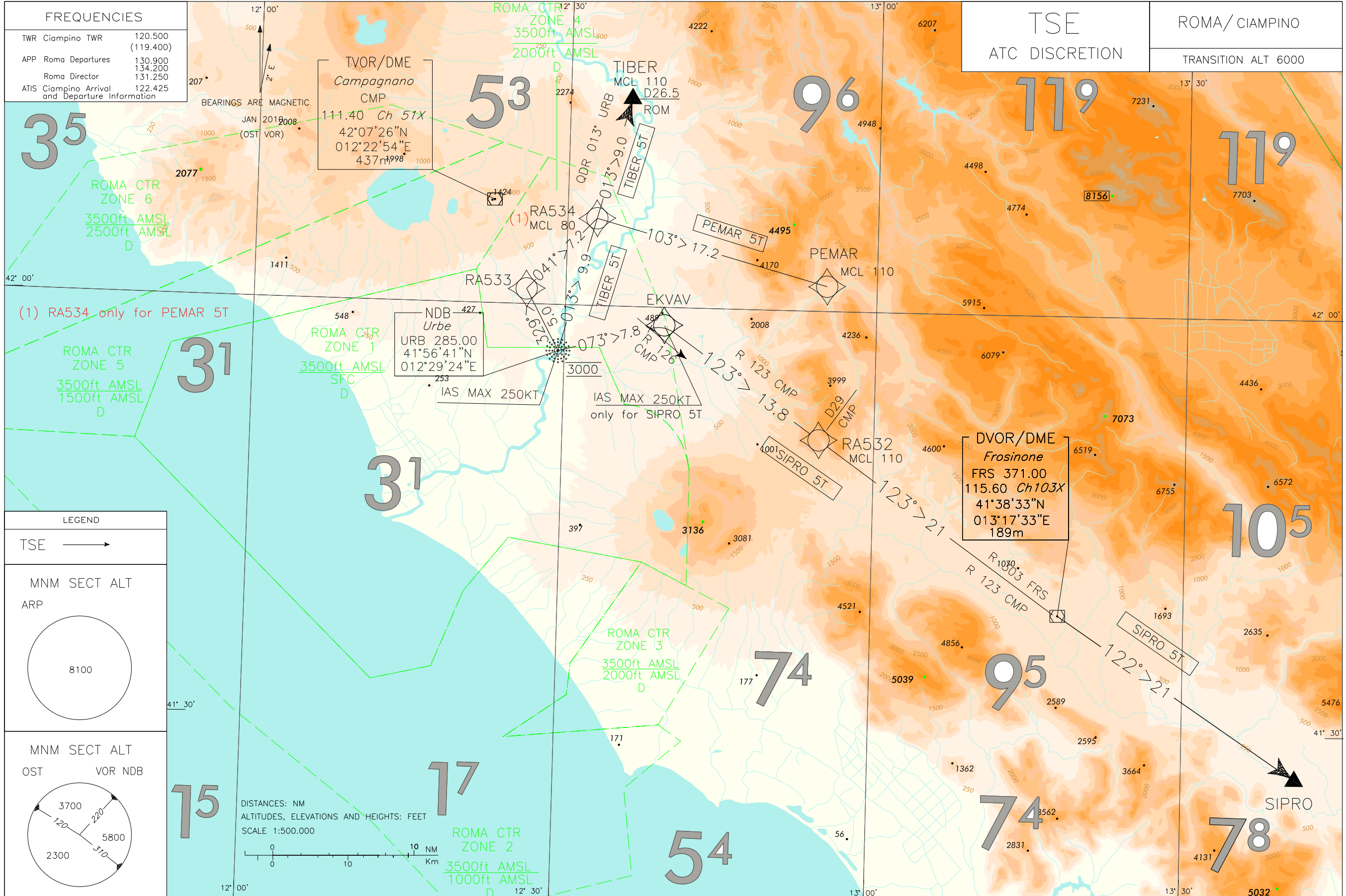
Path Terminator	Waypoint Identifier	Fly Over	Course °M(°T)	Magnetic Variation	Distance (NM)	Turn Direction	Altitude (ft)	Speed Limit (kt)	Navigation Specification
IF	OST	-	-	-	-	-	+5000	-	RNAV1
TF	XIBRI	Y	188° (190.5)	-	15.0	-	-	-	RNAV1
DF	DIBVI	-	-	-	-	L	+6000	-	RNAV1
TF	RMC	-	023° (024.9)	-	19.0	-	+FL80	-	RNAV1
TF	RA536	-	359° (001.0)	-	8.4	-	-	-	RNAV1
TF	PEMAR	-	069° (070.8)	-	15.5	-	+FL110	-	RNAV1

WAYPOINT LIST

Waypoint Identifier	Coordinates
RA501	41°41'38.0" N 012°38'14.7" E
RA502	41°42'28.1" N 012°49'50.0" E
RA531	42°11'31.3" N 012°06'33.1" E
RA536	41°56'41.7" N 012°35'28.3" E

Intenzionalmente bianca

Intentionally left blank



TSE ATC DISCRETION DESCRIPTION

TIBER 5T

Proceed on TR 013° (QDR 013° URB NDB) bound to TIBER.

MCA/MCL: URB NDB: 3000 FT steady; TIBER: FL110

Path Terminator	Waypoint Identifier	Fly Over	Course °M(°T)	Magnetic Variation	Distance (NM)	Turn Direction	Altitude (ft)	Speed Limit (kt)	Navigation Specification
IF	URB	-	-	-	-	-	@3000	- 250	Conventional/ RNAV1
TF	TIBER	-	013° (014.9)	-	18.9	-	+FL110	-	Conventional/ RNAV1

SIPRO 5T

Proceed on TR 073° (QDR 073° URB NDB). Crossing RDL126 CMP VOR turn right to join and follow RDL 123 CMP VOR (TR 123°) bound to FRS VOR. Leave FRS VOR on RDL 122 (TR 122°) bound to SIPRO.

MCL: URB NDB: 3000FT steady; RDL 123 /29NM CMP VOR/DME FL 110

Path Terminator	Waypoint Identifier	Fly Over	Course °M(°T)	Magnetic Variation	Distance (NM)	Turn Direction	Altitude (ft)	Speed Limit (kt)	Navigation Specification
IF	URB	-	-	-	-	-	@3000	- 250	Conventional/ RNAV1
TF	EKVAV	-	073° (075.0)	-	7.8	-	-	- 250	Conventional/ RNAV1
TF	RA532	-	123° (125.1)	-	13.8	-	+FL110	-	Conventional/ RNAV1
TF	FRS	-	123° (125.1)	-	21.0	-	-	-	Conventional/ RNAV1
TF	SIPRO	-	122° (123.8)	-	21.0	-	-	-	Conventional/ RNAV1

PEMAR 5T

Path Terminator	Waypoint Identifier	Fly Over	Course °M(°T)	Magnetic Variation	Distance (NM)	Turn Direction	Altitude (ft)	Speed Limit (kt)	Navigation Specification
IF	URB	-	-	-	-	-	@3000	- 250	RNAV1
TF	RA533	-	329° (331.6)	-	5.0	-	-	- 250	RNAV1
TF	RA534	-	041° (043.5)	-	7.2	-	+FL80	-250	RNAV1
TF	PEMAR	-	103° (104.9)	-	17.2	-	+FL110	-	RNAV1

WAYPOINT LIST

Waypoint Identifier	Coordinates
RA532	41°50'43.9" N 012°54'51.4" E
RA533	42°01'04.8" N 012°26'12.7" E
RA534	42°06'15.8" N 012°32'49.7" E

Intenzionalmente bianca

Intentionally left blank