

CHANGE: LI D266 and BOX MSA IMPLEMENTED; ROSKA 7L MODIFIED.

REMARK

- 1) active according to hours reported in ENR 2.1.2
- 2) except the airspace of the ATS routes which remains under Padova ACC authority
- 3) SIDs VIC 6M/8X and ROKIB 7M/8X may be authorized only if no intense military traffic is present within Treviso CTR

BEARINGS TRACKS AND RADIALS ARE MAGNETIC  
 ALTITUDES AND ELEVATION ARE IN FEET  
 DISTANCES ARE IN NM  
 SCALE 1:350.000

Not to scale

MNM SECT ALT  
 25NM ARP

7200

**SID RNAV 1 RWY 04 L/R  
VENEZIA/Tessera**

**Noise abatement procedures**

Provision of Italian Civil Aviation Authority reported in ENR 1.5 apply.

**Remark 1:** Initial turns shall be executed with IAS MAX 200 KT and bank angle 20° or rate of turn 2°/s whichever requires the lesser bank

**Remark 2:** Minimum climb gradient 425ft/NM (7%)

**Remark 3:** SID AKADO 6L Minimum climb gradient 470ft/NM (7.8%)

**AKADO 6L**

Path Terminator	Waypoint Identifier	Fly Over	Course °M(°T)	Magnetic Variation	Distance (NM)	Turn Direction	Altitude (ft)	Speed Limit (kt)	Navigation Specification
CA	-	-	042 (045.9)	-	-	-	+410	-	RNAV1
DF	PZ488	-	-	-	-	-	+750	200 (1)	RNAV1
TF	PZ489	-	095 (098.2)	-	6.3	-	+3400	200	RNAV1
TF	AKADO		186 (189.5)	-	11.5	R	+FL100	-	RNAV1

**CHI 6L**

Path Terminator	Waypoint Identifier	Fly Over	Course °M(°T)	Magnetic Variation	Distance (NM)	Turn Direction	Altitude (ft)	Speed Limit (kt)	Navigation Specification
CA	-	-	042 (045.9)	-	-	-	+410	-	RNAV1
DF	PZ488	-	-	-	-	-	+750	200 (1)	RNAV1
TF	PZ489	-	095 (098.2)	-	6.3	-	+3400	200	RNAV1
TF	AKADO		186 (189.5)		11.5	R	-	-	RNAV1
TF	CHI	-	207 (210.6)	-	18.3	-	+6000	-	RNAV1

**ROKIB 6L**

Path Terminator	Waypoint Identifier	Fly Over	Course °M(°T)	Magnetic Variation	Distance (NM)	Turn Direction	Altitude (ft)	Speed Limit (kt)	Navigation Specification
CA	-	-	042 (045.9)	-	-	-	+410	-	RNAV1
DF	PZ488	-	-	-	-	-	+750	200 (1)	RNAV1
TF	PZ489	-	095 (098.2)	-	6.3	-	+3400	200	RNAV1
TF	PZ490	-	197 (200.8)	-	4.2	R	+4000	220	RNAV1
TF	PZ601	-	264 (267.1)	-	16.8	-	+FL90	-	RNAV1
TF	ARLUK	-	322 (325.8)	-	20.6	-	+FL110	-	RNAV1
TF	PZ485	Y	331 (334.3)	-	9.1	-	+FL130	-	RNAV1
TF	ROKIB	-	331 (334.3)	-	5.0	-	+FL140	-	RNAV1

**ROKIB 7M (ATC Discretion)**

Path Terminator	Waypoint Identifier	Fly Over	Course °M(°T)	Magnetic Variation	Distance (NM)	Turn Direction	Altitude (ft)	Speed Limit (kt)	Navigation Specification
CA	-	-	042 (045.9)	-	-	-	+410	-	RNAV1
CF	PZ486	-	043 (045.9)	3°	-	-	+1600	200	RNAV1
TF	PZ477	-	313 (315.9)	-	3.0	L	+2500	200	RNAV1
TF	PZ602	-	272 (275)	-	18.8	-	+4000	-	RNAV1
TF	ARLUK	-	322 (325.6)	-	7.4	-	+FL110	-	RNAV1
TF	PZ485	Y	331 (334.3)	-	9.1	-	+FL130	-	RNAV1
TF	ROKIB	-	331 (334.3)	-	5.0	-	+FL140	-	RNAV1

**ROKIB 8X**

Path Terminator	Waypoint Identifier	Fly Over	Course °M(°T)	Magnetic Variation	Distance (NM)	Turn Direction	Altitude (ft)	Speed Limit (kt)	Navigation Specification
CA	-	-	042 (045.9)	-	-	-	+410	-	RNAV1
DF	PZ488	-	-	-	-	-	+750	-200 (1)	RNAV1
TF	PZ489	-	095 (098.2)	-	6.3	-	+3400	-200	RNAV1
TF	PZ490	-	197 (200.8)	-	4.2	R	+4000	-200	RNAV1
TF	PZ481	-	284 (287.3)	-	13.5	R	+FL100	-	RNAV1
TF	PZ484	-	284 (287.3)	-	11.8	-	-	-	RNAV1
TF	ARLUK	-	331 (334.3)	-	9.5	-	+FL110	-	RNAV1
TF	PZ485	Y	331 (334.3)	-	9.0	-	+FL130	-	RNAV1
TF	ROKIB	-	331 (334.3)	-	5.0	-	+FL140	-	RNAV1

**ROSKA 7L**

Path Terminator	Waypoint Identifier	Fly Over	Course °M(°T)	Magnetic Variation	Distance (NM)	Turn Direction	Altitude (ft)	Speed Limit (kt)	Navigation Specification
CA	-	-	042 (045.9)	-	-	-	+410	-	RNAV1
DF	PZ488	-	-	-	-	-	+750	-200 (1)	RNAV1
TF	PZ489	-	095 (098.2)	-	6.3	-	+3400	-200	RNAV1
TF	PZ497	-	129 (132.9)	-	8.3	-	+5000	-	RNAV1
TF	ROSKA	-	129 (132.9)	-	10.0	-	+FL90	-	RNAV1

**VIC 6L**

Path Terminator	Waypoint Identifier	Fly Over	Course °M(°T)	Magnetic Variation	Distance (NM)	Turn Direction	Altitude (ft)	Speed Limit (kt)	Navigation Specification
CA	-	-	042 (045.9)	-	-	-	+410	-	RNAV1
DF	PZ488	-	-	-	-	-	+750	-200 (1)	RNAV1
TF	PZ489	-	095 (098.2)	-	6.3	-	+3400	-200	RNAV1
TF	PZ490	-	197 (200.8)	-	4.2	-	+4000	-220	RNAV1
TF	PZ601	-	264 (267.1)	-	16.8	-	+FL90	-	RNAV1
TF	VIC	-	299 (302.7)	-	21.8	-	+FL120	-	RNAV1

**VIC 6M (ATC Discretion)**

Path Terminator	Waypoint Identifier	Fly Over	Course °M(°T)	Magnetic Variation	Distance (NM)	Turn Direction	Altitude (ft)	Speed Limit (kt)	Navigation Specification
CA	-	-	042 (045.9)	-	-	-	+410	-	RNAV1
CF	PZ486	-	042 (045.9)	3	-	-	+1600	-200	RNAV1
TF	PZ477	-	313 (315.9)	-	3.0	L	+2500	-200	RNAV1
TF	VIC	-	272 (275)	-	29.8	-	+FL120	-	RNAV1

**VIC 8X**

Path Terminator	Waypoint Identifier	Fly Over	Course °M(°T)	Magnetic Variation	Distance (NM)	Turn Direction	Altitude (ft)	Speed Limit (kt)	Navigation Specification
CA	-	-	042 (045.9)	-	-	-	+410	-	RNAV1
DF	PZ488	-	-	-	-	-	+750	-200 (1)	RNAV1
TF	PZ489	-	095 (098.2)	-	6.3	-	+3400	-200	RNAV1
TF	PZ490	-	197 (200.8)	-	4.2	R	+4000	-200	RNAV1
TF	PZ481	-	284 (287.3)	-	13.5	R	+FL100	-	RNAV1
TF	VIC	-	284 (287.3)	-	23.2	-	+FL120	-	RNAV1

**WAYPOINT LIST**

<b>Waypoint Identifier</b>	<b>Coordinates</b>
PZ477	45°35'45.4" N 012°22'54.3" E
PZ481	45°31'22.8" N 012°12'16.5" E
PZ484	45°34'53.2" N 011°56'10.0" E
PZ485	45°51'37.9" N 011°44'38.7" E
PZ486	45°33'37.2" N 012°25'50.8" E
PZ488	45°32'14.7" N 012°23'49.3" E
PZ489	45°31'20.6" N 012°32'41.7" E
PZ490	45°27'23.8" N 012°30'33.5" E
PZ497	45°25'40.5" N 012°41'20.4" E
PZ601	45°26'30.8" N 012°06'44.3" E
PZ602	45°37'21.1" N 011°56'14.1" E

Intenzionalmente bianca

*Intentionally left blank*

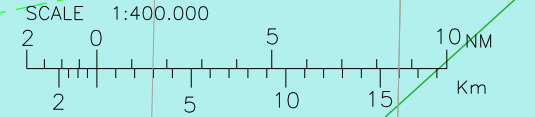
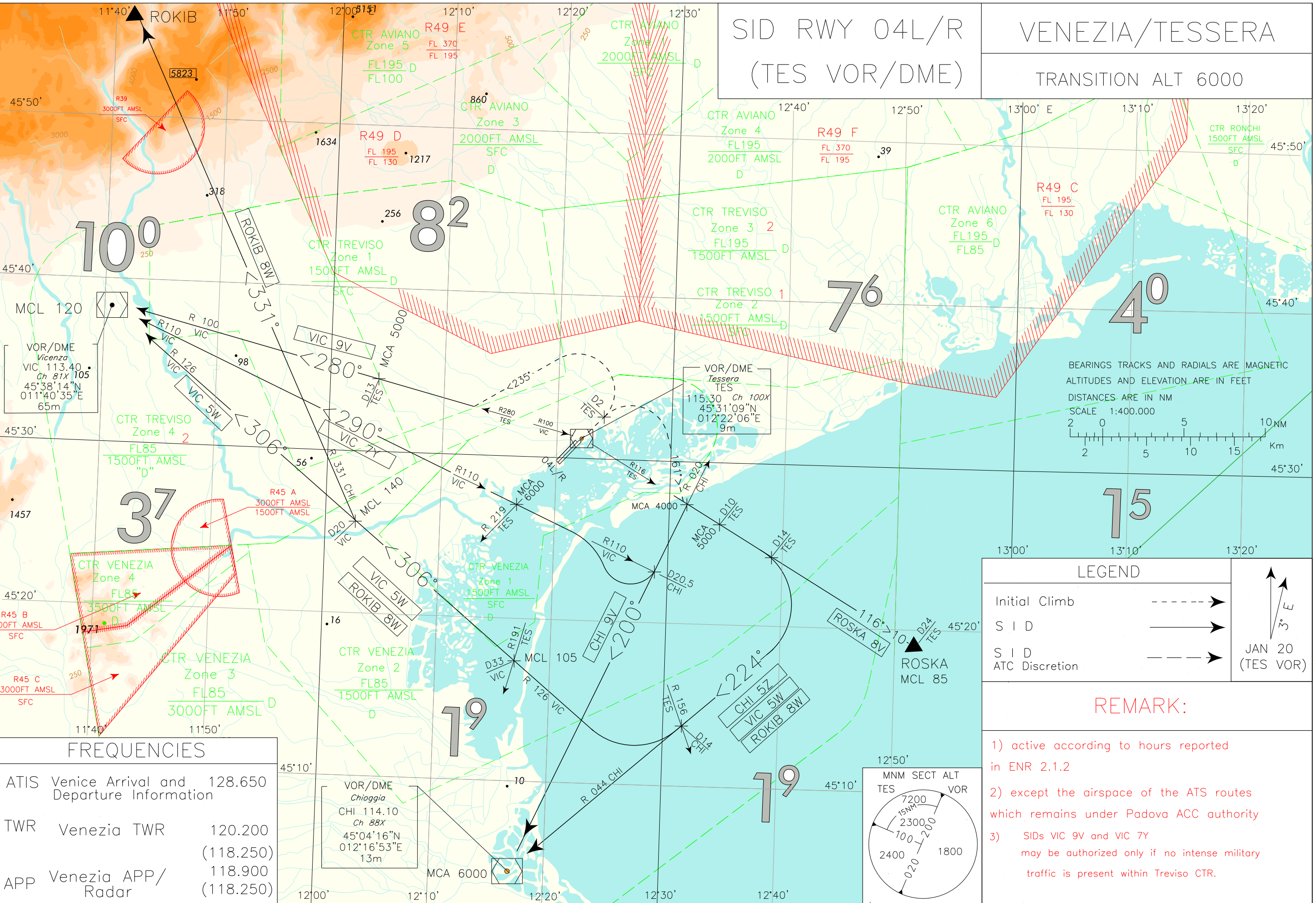


# SID RWY 04L/R (TES VOR/DME)

# VENEZIA/TESSERA

TRANSITION ALT 6000

CHANGE: VIC NDB DISMISSED - VIC 9V/7Y/5W MODIFIED - ROKIB 8W MODIFIED

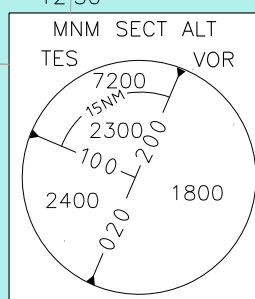


LEGEND	
Initial Climb	--->
S I D	—>
S I D ATC Discretion	- - ->

JAN 20  
(TES VOR)

- REMARK:**
- 1) active according to hours reported in ENR 2.1.2
  - 2) except the airspace of the ATS routes which remains under Padova ACC authority
  - 3) SIDs VIC 9V and VIC 7Y may be authorized only if no intense military traffic is present within Treviso CTR.

FREQUENCIES		
ATIS	Venice Arrival and Departure Information	128.650
TWR	Venezia TWR	120.200 (118.250)
APP	Venezia APP/ Radar	118.900 (118.250)





**INITIAL CLIMB PROCEDURE RWY 04L/R**

After take-off proceed on runway heading until 2 NM TES DME, then turn right on DR 161° (left on DR 235° for SID VIC 9V only) to join the assigned SID.

Turns after take-off shall be executed according to the following parameters:

- a. TAS not more than 250 kt;
- b. Bank 25° or rate of turn 2°/sec if it requires a lesser bank.

**SID RWY 04L/R DESCRIPTION****REMARKS**

- 1) VIC 9V and VIC 7Y may be authorized only if heavy military traffic doesn't exist within Treviso CTR.

**CHI 9V**

Join RDL 020 CHI VOR (TR 200°) bound to CHI VOR.

MCA: INT DR 161°/ RDL 020 CHI VOR, 4000 FT; CHI VOR, 6000 FT

**CHI 5Z**

Join RDL 116 TES VOR (TR 116°), then at 14 NM TES DME turn right until joining RDL 044 CHI VOR (TR 224°) bound to CHI VOR.

MCA: RDL 116/10NM TES VOR/DME, 5000 FT; CHI VOR, 6000 FT

**ROSKA 8V**

Join RDL 116 TES VOR (TR 116°) bound to ROSKA (RDL 116/24 NM TES VOR/DME).

MCA/MCL: RDL 116/10 NM TES VOR/DME, 5000 FT; ROSKA, FL 85

**VIC 9V**

Join RDL 280 TES VOR or RDL 100 VIC VOR (TR 280°) bound to VIC VOR.

MCA/MCL: RDL 280/13NM TES VOR/DME, 5000 FT; VIC VOR, FL 120

**VIC 7Y**

Join RDL 020 CHI VOR (TR 200°), then at INT RDL 020/20.5NM CHI VOR/DME turn right and proceed on TR 290° (RDL 110 VIC VOR) bound to VIC VOR.

MCA/MCL: INT DR 161°/ RDL 020 CHI VOR, 4000 FT;  
INT RDL 110 VIC VOR/RDL 219 TES VOR, 6000 FT;  
VIC VOR, FL 120

**ROKIB 8W**

Join RDL 116 TES VOR (TR 116°), then at 14 NM TES DME turn right until joining RDL 044 CHI VOR (TR 224°) until 14 NM CHI DME (INT RDL 156 TES VOR), then turn right until joining RDL 126 VIC VOR (TR 306°) until 20 NM VIC DME, then turn right on RDL 331 CHI VOR (TR 331°) bound to ROKIB.

MCA/MCL: RDL 116/10NM TES VOR/DME, 5000 FT;  
RDL 126/33 NM VIC VOR/DME (or INT RDL 126 VIC VOR/RDL 191 TES VOR), FL 105;  
RDL 126/20 NM VIC VOR/DME, FL 140

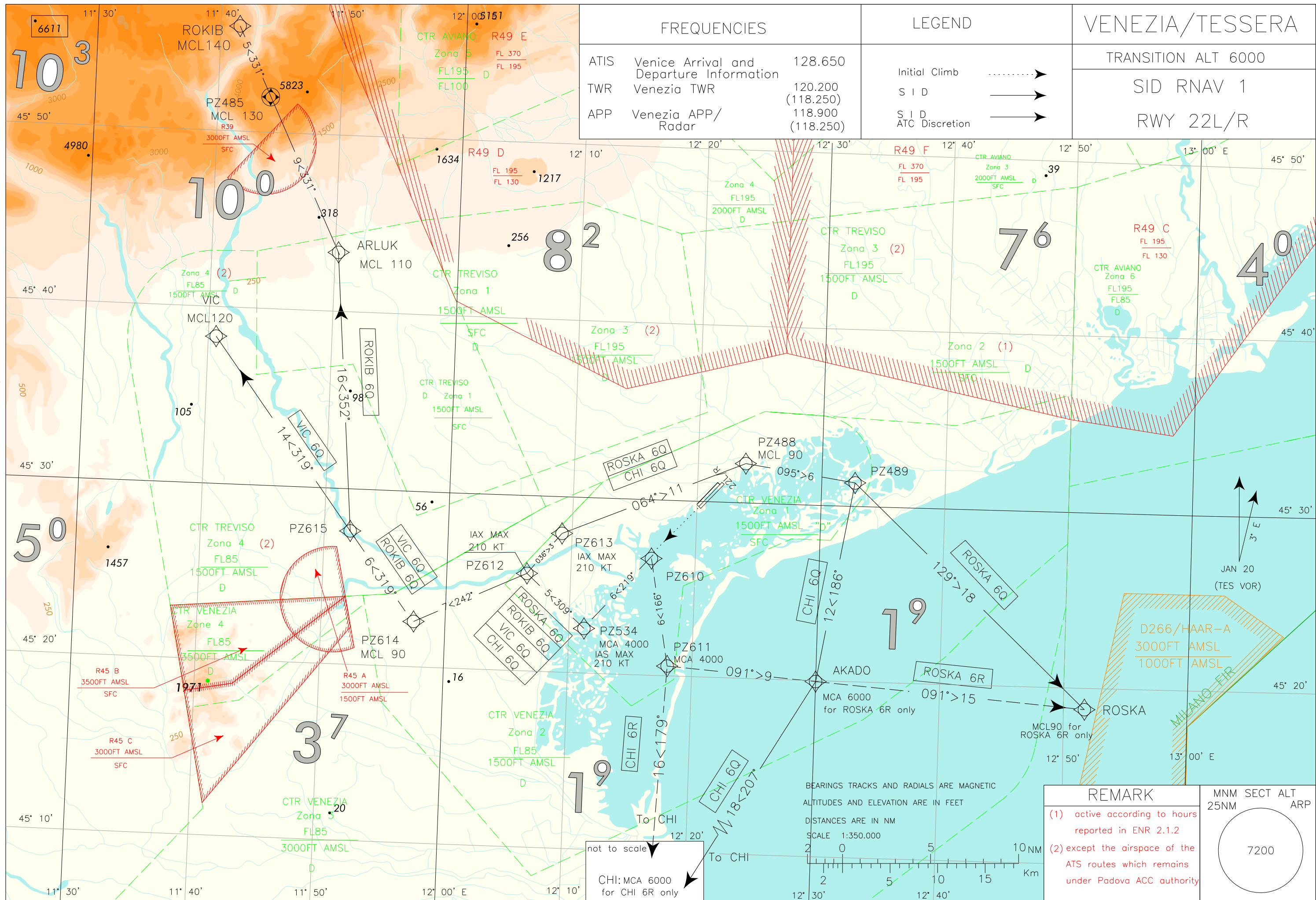
**VIC 5W**

Join RDL 116 TES VOR (TR 116°), then at 14 NM TES DME turn right until joining RDL 044 CHI VOR (TR 224°) until 14 NM CHI DME (INT RDL 156 TES VOR), then turn right until joining RDL 126 VIC VOR (TR 306°) bound to VIC VOR.

MCA/MCL: RDL 116/10NM TES VOR/DME, 5000 FT;  
RDL 126 /33 NM VIC VOR/DME (or INT RDL 126 VIC VOR/RDL 191 TES VOR), FL 105;  
RDL 126 /20 NM VIC VOR/DME FL 140

Intenzionalmente bianca

*Intentionally left blank*



FREQUENCIES		
ATIS	Venice Arrival and Departure Information	128.650
TWR	Venezia TWR	120.200 (118.250)
APP	Venezia APP/ Radar	118.900 (118.250)

LEGEND	
Initial Climb	.....➔
S I D	————➔
S I D ATC Discretion	————➔

**VENEZIA/TESSERA**

TRANSITION ALT 6000

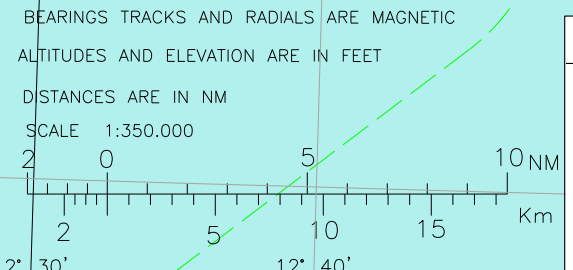
SID RNAV 1

RWY 22L/R

CHANGE: D266 and BOX MSA implemented

not to scale

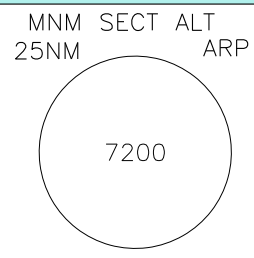
CHI: MCA 6000 for CHI 6R only



**REMARK**

(1) active according to hours reported in ENR 2.1.2

(2) except the airspace of the ATS routes which remains under Padova ACC authority



**SID RNAV 1 RWY 22 L/R  
VENEZIA/Tessera**

**REMARK**

Minimum climb gradient:

- 7.5% (455 FT/NM) until passing FL 90 for SIDs ROSKA 6Q, CHI 6Q, VIC 6Q and ROKIB 6Q;
- 7.0 % (425 FT/NM) for SIDs CHI 6R and ROSKA 6R.

**CHI 6Q**

Path Terminator	Waypoint Identifier	Fly Over	Course °M(°T)	Magnetic Variation	Distance (NM)	Turn Direction	Altitude (ft)	Speed Limit (kt)	Navigation Specification
CA	-	-	219 (222.1)	-	-	-	+410	-	RNAV1
DF	PZ610	-	-	-	-	-	-	-	RNAV1
TF	PZ534	-	219 (222.1)	-	5.5	-	+4000	210	RNAV1
TF	PZ612	-	309 (312.0)	-	4.5	R	-	210	RNAV1
TF	PZ613	-	036 (039.2)	-	3.0	R	-	210	RNAV1
TF	PZ488	-	064 (067.2)	-	11.2	-	+FL90	-	RNAV1
TF	PZ489	-	095 (098.1)	-	6.3	-	-	-	RNAV1
TF	AKADO	-	186 (189.5)	-	11.5	R	-	-	RNAV1
TF	CHI	-	207 (210.6)	-	18.3	-	-	-	RNAV1

**CHI 6R (ATC Discretion)**

Path Terminator	Waypoint Identifier	Fly Over	Course °M(°T)	Magnetic Variation	Distance (NM)	Turn Direction	Altitude (ft)	Speed Limit (kt)	Navigation Specification
CA	-	-	219 (222.1)	-	-	-	+410	-	RNAV1
DF	PZ610	-	-	-	-	-	-	-	RNAV1
TF	PZ611	-	166 (169.7)	-	6.2	-	+4000	-	RNAV1
TF	CHI	-	179 (182.7)	-	16.4	-	+6000	-	RNAV1

**ROKIB 6Q**

Path Terminator	Waypoint Identifier	Fly Over	Course °M(°T)	Magnetic Variation	Distance (NM)	Turn Direction	Altitude (ft)	Speed Limit (kt)	Navigation Specification
CA	-	-	219 (222.1)	-	-	-	+410	-	RNAV1
DF	PZ610	-	-	-	-	-	-	-	RNAV1
TF	PZ534	-	219 (222.1)	-	5.5	-	+4000	210	RNAV1
TF	PZ612	-	309 (312.0)	-	4.5	R	-	210	RNAV1
TF	PZ614	-	242 (245.0)	-	7.0	L	+FL90	-	RNAV1
TF	PZ615	-	319 (322.8)	-	6.3	-	-	-	RNAV1
TF	ARLUK	-	352 (355.5)	-	15.8	-	+FL110	-	RNAV1
TF	PZ485	Y	331 (334.3)	-	9.0	-	+FL130	-	RNAV1
TF	ROKIB	-	331 (334.3)	-	5.0	-	+FL140	-	RNAV1

**ROSKA 6Q**

Path Terminator	Waypoint Identifier	Fly Over	Course °M(°T)	Magnetic Variation	Distance (NM)	Turn Direction	Altitude (ft)	Speed Limit (kt)	Navigation Specification
CA	-	-	219 (222.1)	-	-	-	+410	-	RNAV1
DF	PZ610	-	-	-	-	-	-	-	RNAV1
TF	PZ534	-	219 (222.1)	-	5.5	-	+4000	210	RNAV1
TF	PZ612	-	309 (312.0)	-	4.5	R	-	210	RNAV1
TF	PZ613	-	036 (039.2)	-	3.0	R	-	210	RNAV1
TF	PZ488	-	064 (067.2)	-	11.2	-	+FL90	-	RNAV1
TF	PZ489	-	095 (098.1)	-	6.3	-	-	-	RNAV1
TF	ROSKA	-	129 (132.9)	-	18.3	-	-	-	RNAV1

**ROSKA 6R (ATC Discretion)**

Path Terminator	Waypoint Identifier	Fly Over	Course °M(°T)	Magnetic Variation	Distance (NM)	Turn Direction	Altitude (ft)	Speed Limit (kt)	Navigation Specification
CA	-	-	219 (222.1)	-	-	-	+410	-	RNAV1
DF	PZ610	-	-	-	-	-	-	-	RNAV1
TF	PZ611	-	166 (169.7)	-	6.2	-	+4000	-	RNAV1
TF	AKADO	-	091 (094.1)	-	8.5	-	+6000	-	RNAV1
TF	ROSKA	-	091 (094.2)	-	15.3	-	+FL90	-	RNAV1

**VIC 6Q**

Path Terminator	Waypoint Identifier	Fly Over	Course °M(°T)	Magnetic Variation	Distance (NM)	Turn Direction	Altitude (ft)	Speed Limit (kt)	Navigation Specification
CA	-	-	219 (222.1)	-	-	-	+410	-	RNAV1
DF	PZ610	-	-	-	-	-	-	-	RNAV1
TF	PZ534	-	219 (222.1)	-	5.5	-	+4000	210	RNAV1
TF	PZ612	-	309 (312.0)	-	4.5	R	-	210	RNAV1
TF	PZ614	-	242 (245.0)	-	7.0	L	+FL90	-	RNAV1
TF	PZ615	-	319 (322.8)	-	6.3	-	-	-	RNAV1
TF	VIC	-	319 (322.8)	-	13.5	-	+FL120	-	RNAV1

**WAYPOINT LIST**

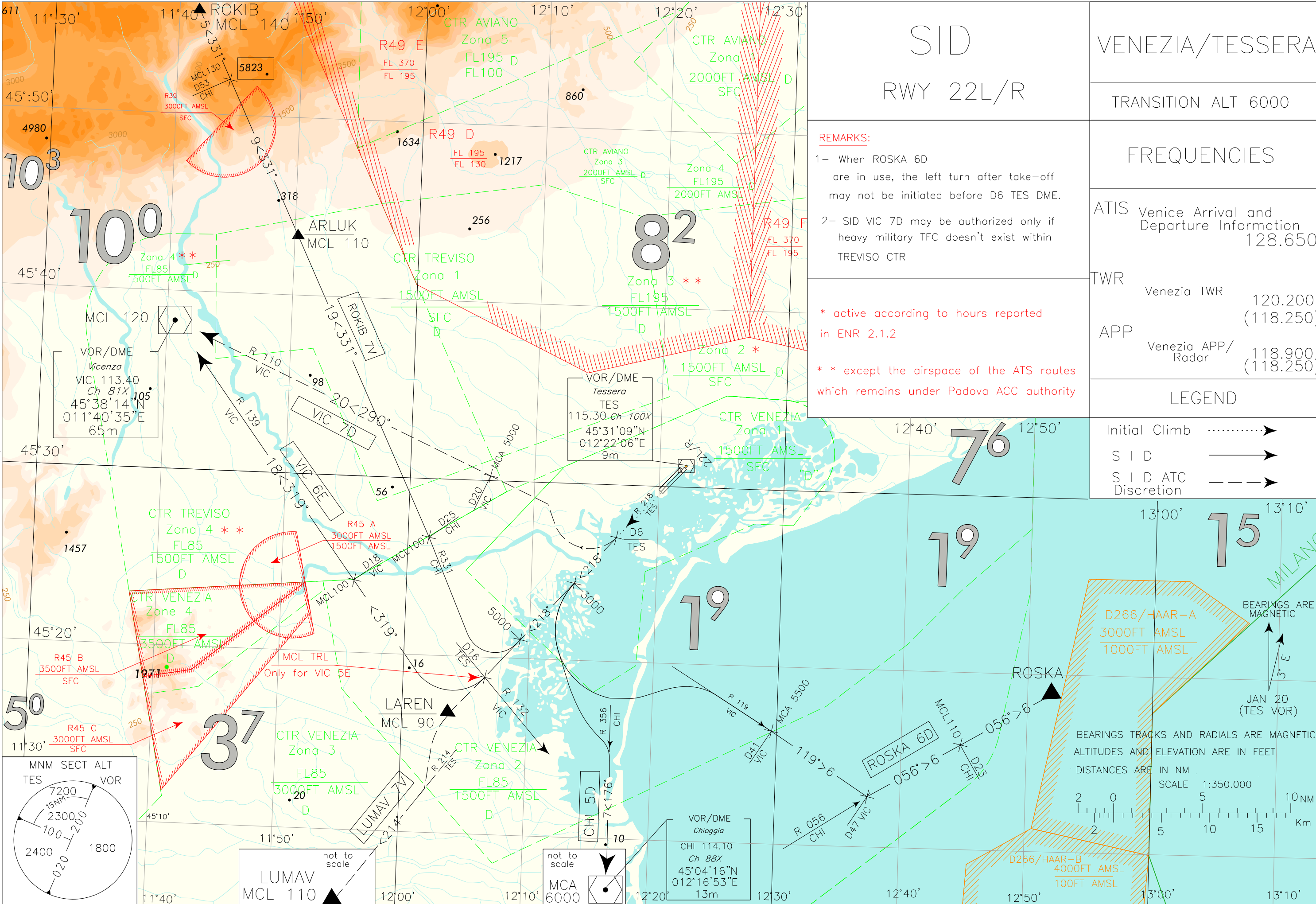
Waypoint Identifier	Coordinates
PZ485	45°51'37.9" N 011°44'38.7" E
PZ488	45°32'14.7" N 012°23'49.3" E
PZ489	45°31'20.6" N 012°32'41.7" E
PZ534	45°22'34.9" N 012°11'12.5" E
PZ610	45°26'40.8" N 012°16'27.2" E
PZ611	45°20'36.6" N 012°18'00.4" E
PZ612	45°25'35.4" N 012°06'27.6" E
PZ613	45°27'55.8" N 012°09'10.3" E
PZ614	45°22'37.6" N 011°57'27.8" E
PZ615	45°27'37.4" N 011°52'04.9" E

Intenzionalmente bianca

*Intentionally left blank*



CHANGE: VIC NDB DIMISSED - VIC 7D/6E MODIFIED - ROSKA 6D MODIFIED



# SID

## RWY 22L/R

VENEZIA/TESSERA

TRANSITION ALT 6000

**REMARKS:**

- 1- When ROSKA 6D are in use, the left turn after take-off may not be initiated before D6 TES DME.
- 2- SID VIC 7D may be authorized only if heavy military TFC doesn't exist within TREVISO CTR

\* active according to hours reported in ENR 2.1.2

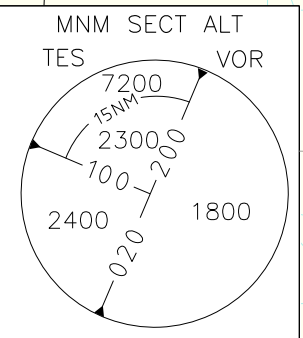
\*\* except the airspace of the ATS routes which remains under Padova ACC authority

### FREQUENCIES

ATIS	Venice Arrival and Departure Information	128.650
TWR	Venezia TWR	120.200 (118.250)
APP	Venezia APP/ Radar	118.900 (118.250)

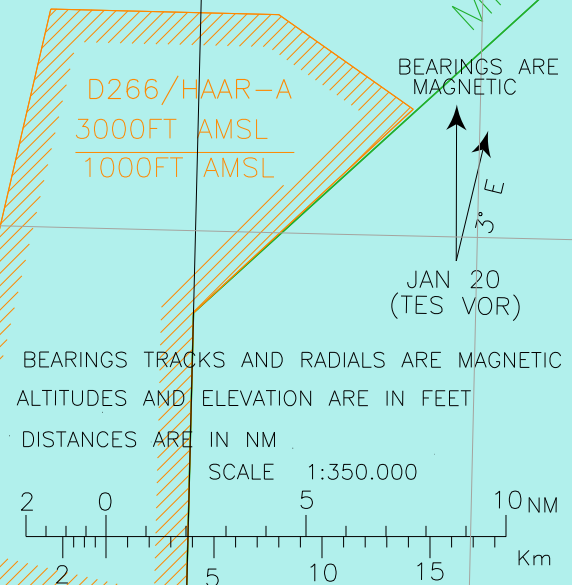
### LEGEND

Initial Climb	.....>
S I D	————>
S I D ATC Discretion	- - - ->



LUMAV  
MCL 110

not to scale  
MCA  
6000



**INITIAL CLIMB PROCEDURE RWY 22L/R**

After take-off proceed on RDL 218 TES VOR (TR 218°) to join the assigned SID.

Minimum climb gradient (ATC): 425 ft/NM (7,00%).

**Remark: In case of TES VOR unavailability proceed RWY heading (TR 218°) till 6NM TES DME and then follow the assigned SID.**

**SID DESCRIPTION RWY 22L/R****VIC 7D (ATC discretion)**

At 6NM TES DME turn right to join RDL 110 VIC VOR bound to VIC VOR/DME.

MCA/MCL: RDL 110/20 NM VIC VOR/DME, 5000 FT; VIC VOR/DME, FL 120

**VIC 6E**

At 16NM TES DME (or crossing RDL 132 VIC VOR on TR 218° in case of TES VOR/DME unavailability) turn right until joining RDL 139 VIC VOR (TR 319°) bound to VIC VOR/DME.

MCL: INT RDL 132 VIC VOR/16NM TES DME: TRL;  
RDL 139/18 NM VIC VOR/DME, FL100;  
VIC VOR/DME, FL 120

**ROSKA 6D**

Proceed on RDL 218 TES VOR (TR 218° in case of TES VOR unavailability) until leaving 3000 ft, then turn left (not before 6NM TES DME) until joining RDL 119 VIC VOR until point RDL 119/47NM VIC VOR/DME, then turn left until joining RDL 056 CHI VOR bound to ROSKA.

MCA/MCL: RDL 119/41 NM VIC VOR/DME, 5500 FT;  
RDL 056/23 NM CHI VOR/DME, FL 110

**CHI 5D**

Proceed on RDL 218 TES VOR (TR 218° in case of TES VOR unavailability) until leaving 3000 ft, then turn left until joining RDL 356 CHI VOR (TR 176°) bound to CHI VOR/DME.

MCA: CHI VOR, 6000 ft

**LUMAV 7V (ATC discretion)**

Proceed on RDL 218 TES VOR (TR 218° in case of TES VOR unavailability) until LAREN, then turn left until joining RDL 214 TES VOR (TR 214°) bound to LUMAV.

MCL: LAREN, FL90; LUMAV, FL 110

**ROKIB 7V**

Proceed on RDL 218 TES VOR (TR 218° in case of TES VOR unavailability) until leaving 5000 ft, then turn right until joining RDL 331 CHI VOR bound to ROKIB.

MCL: RDL 331/25 NM CHI VOR/DME, FL100;  
ARLUK, FL110;  
RDL 331/53 NM CHI VOR/DME, FL130;  
ROKIB, FL140

**REMARKS**

1. **When ROSKA 6D are in use, the left turn after take-off shall not be initiated before 6 NM TES DME.**
2. **SID VIC 7D may be authorized only if heavy military traffic doesn't exist within Treviso CTR.**
3. **All above mentioned SID are also Minimum Noise Routeings. Strict adherence within limits of performance criteria is mandatory.**

Intenzionalmente bianca

*Intentionally left blank*