

SCALE 1:250.000



FIS	Padova Information	126.425 (124.150)
APP	Venezia APP	118.900 (CH 118.255)
APP	Venezia Radar	118.900 (CH 118.255)
TWR	Venezia TWR	120.200 (CH 118.255)
ATIS	Venice Arrival and Departure Information	CH 128.655

AD ELEV

7

L
I
P
Z

VENEZIA/TESSERA

CHANGE: BOX FREQ AND CHART UPDATED; NEW VOR/DME 'TVS'



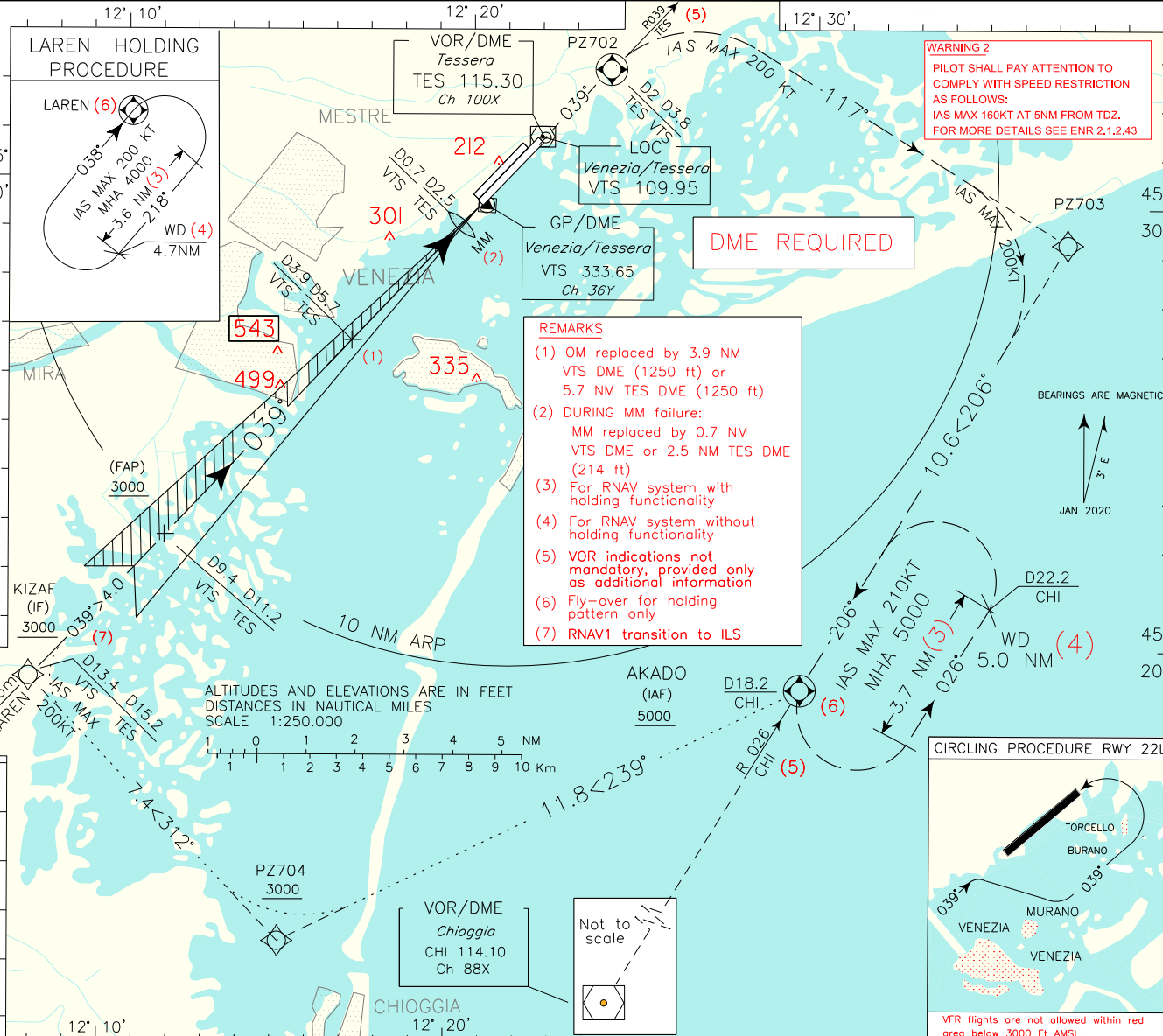
DOC 8168 ED 6 – 2014. AMDT 7

CHANGE: CHI NDB WITHDRAWN

WARNING 1: Some users on ILS APCH reported false LOC captures. Pilot's attention is drawn to pay max caution.
See AIP ENR 1.3

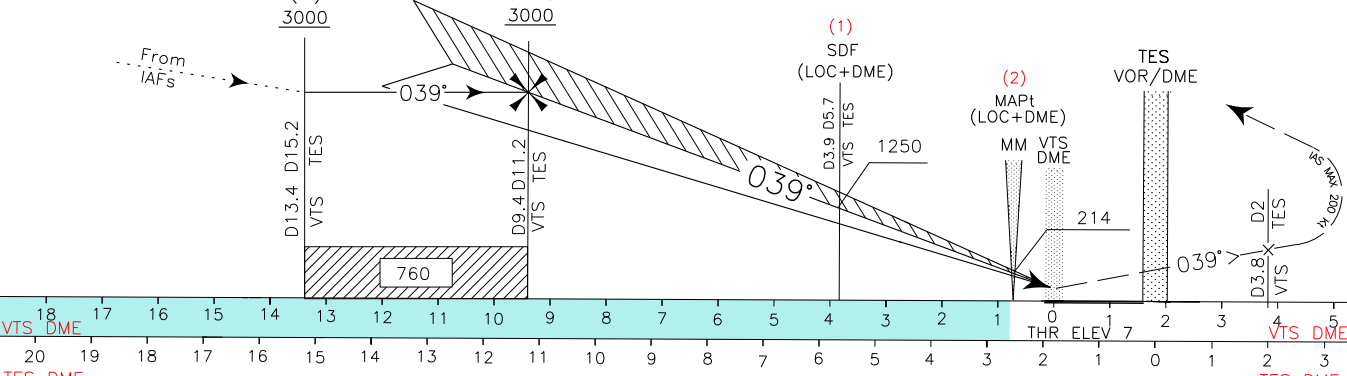
APP Venezia APP/Radar 118.900 (118.250)
TWR Venezia TWR 120.200 (118.250)
ATIS Venice Arrival and Departure Information 128.650

AD ELEV 7
LIPZ
VENEZIA/ TESSERA
ILS or LOC-Z RWY 04R



TRANSITION ALT 6000 MISSED APPROACH: (5) Proceed on RWY heading climbing to 5000FT. At PZ702 (D2 TES DME) turn right on course 117°(with IAS MAX 200 kt) and proceed to PZ703 then turn right bound to AKADO (INT RDL 026/18.2 NM CHI VOR/DME) and hold.

RDH 15.55 M
GP 3°
LOC 5.2%



OCA(OCH)	A	B	C	D	REMARK	FT PER MIN	GS	D3.9VTS-MM		TES DME	ALT (HGT)	MNM SECT ALT	
								3.24 NM	0.49 NM				
STRAIGHT IN APPROACH	ILS CAT I	184 (177)	196 (189)	204 (197)	(8) Circling procedure allowed south of RWY and only for RWY 22L as shown in the inset on the plan view.	530	100	1:57	0:18	7 NM	1657(1650)		
	ILS CAT II	67 (60)	77 (70)	92 (85)		640	120	1:37	0:15	6 NM	1339(1332)		
	LOC+DME	450 (443)				745	140	1:23	0:13	5 NM	1020(1013)		
	CIRCLING (8)	580 (573)	600 (593)	730 (723)		950 (943)	850	160	1:13	0:11	4 NM		702 (695)
						955	180	1:05	0:10	3NM	383 (376)		

TABULAR DESCRIPTION

RNAV TO ILS APPROACH RWY 04R TRANSITION VIA LAREN

Serial Number	Path Terminator	Waypoint Identifier	Fly Over	Course °M(°T)	Magnetic Variation(°)	Distance (NM)	Turn Direction	Altitude (ft)	Speed Limit (kt)	VPA/TCH (m)	Navigation Specification
010	IF	LAREN	-	-	-	-	-	+4000	-	-	RNAV 1
020	TF	KIZAF	-	038 (041.9)	-	4.0	-	+3000	-	-	RNAV 1

RNAV TO ILS APPROACH RWY 04R TRANSITION VIA AKADO (following Missed Approach)

Serial Number	Path Terminator	Waypoint Identifier	Fly Over	Course °M(°T)	Magnetic Variation(°)	Distance (NM)	Turn Direction	Altitude (ft)	Speed Limit (kt)	VPA/TCH (m)	Navigation Specification
010	IF	AKADO	-	-	-	-	-	+5000	-	-	RNAV 1
020	TF	PZ704	-	239 (242.7)	-	11.8	-	+3000	-	-	RNAV 1
030	TF	KIZAF	-	312 (315.0)	-	7.4	-	+3000	200	-	RNAV 1

TRANSITION TO RNAV MISSED APPROACH

Serial Number	Path Terminator	Waypoint Identifier	Fly Over	Course °M(°T)	Magnetic Variation(°)	Distance (NM)	Turn Direction	Altitude (ft)	Speed Limit (kt)	VPA/TCH (m)	Navigation Specification
010	CF	PZ702	Y	039 (42.1)	-	-	-	-	200	-	RNAV 1
020	CF	PZ703	-	117 (120.6)	-	-	-	-	200	-	RNAV 1
030	TF	AKADO	-	206 (209.5)	-	10.6	-	+5000	210	-	RNAV 1
040	HM	AKADO	Y	206 (210.0)	-	-	L	+5000	210	-	RNAV 1

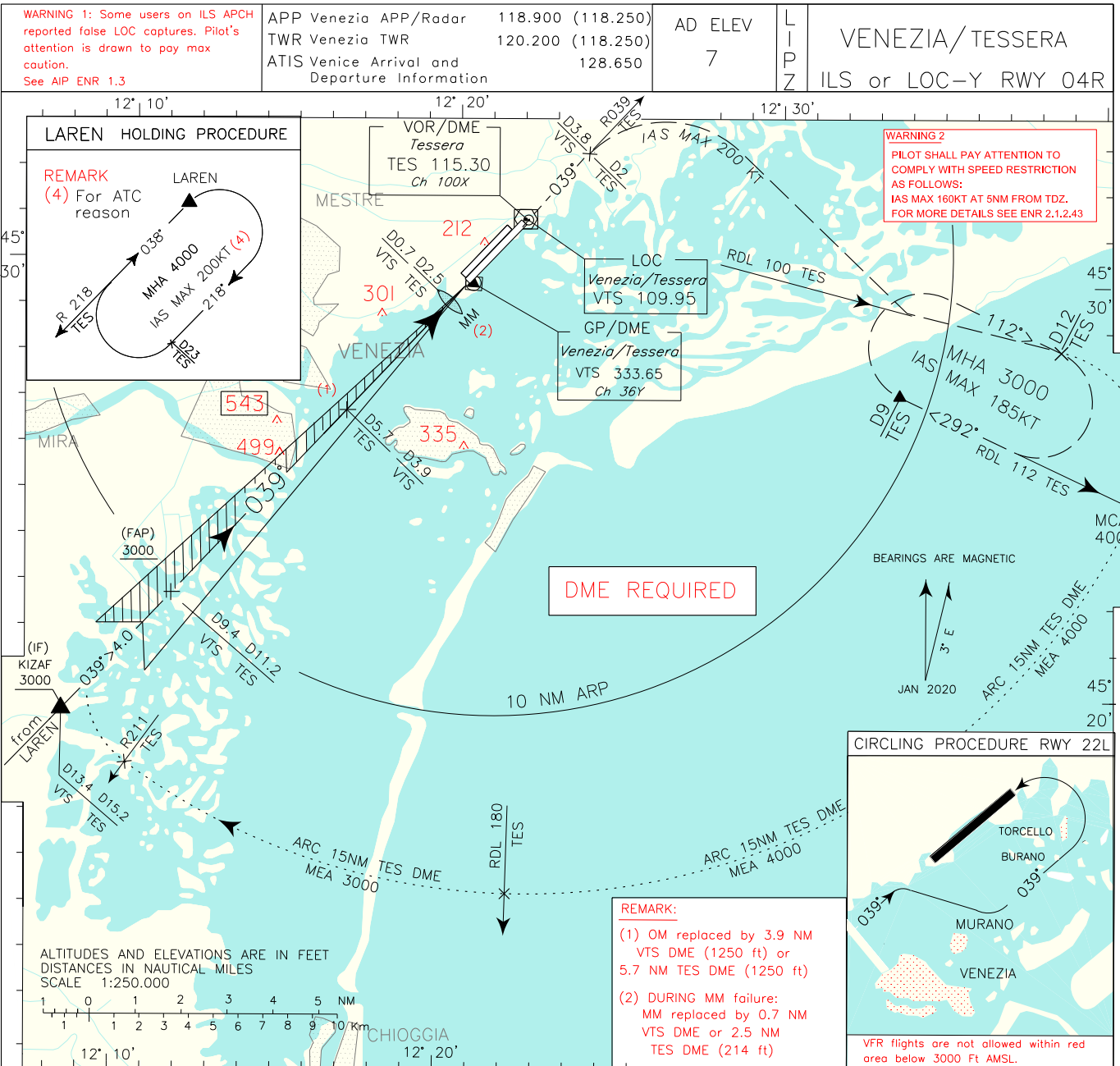
Path Terminator	Waypoint Identifier	Inbound Course °M (°T)	Leg Distance (NM) (1)	Timing(min.)/ Waypoint Distance (NM) (2)	Turn Direction	Minimum Altitude (FT)	Maximum Altitude (FL)	Speed Limit (kt)	Magnetic Variation (°)	Navigation Specification
HM	LAREN	038 (042.0)	3.6	-/4.7	R	4000	-	200	3.0	RNAV 1
HM	AKADO	207 (210.0)	3.7	-/5.0	L	5000	-	210	3.0	RNAV 1

WAYPOINT LIST

Waypoint Identifier	Coordinates
PZ702	45°32'35.91"N 012°24'03.41"E
PZ703	45°29'13.77"N 012°37'23.52"E
PZ704	45°14'34.43"N 012°15'07.44"E

DOC 8168 ED 6 – 2014. AMDT 7

CHANGE: WARNING 2 ADDED – MAG VAR UPDATED



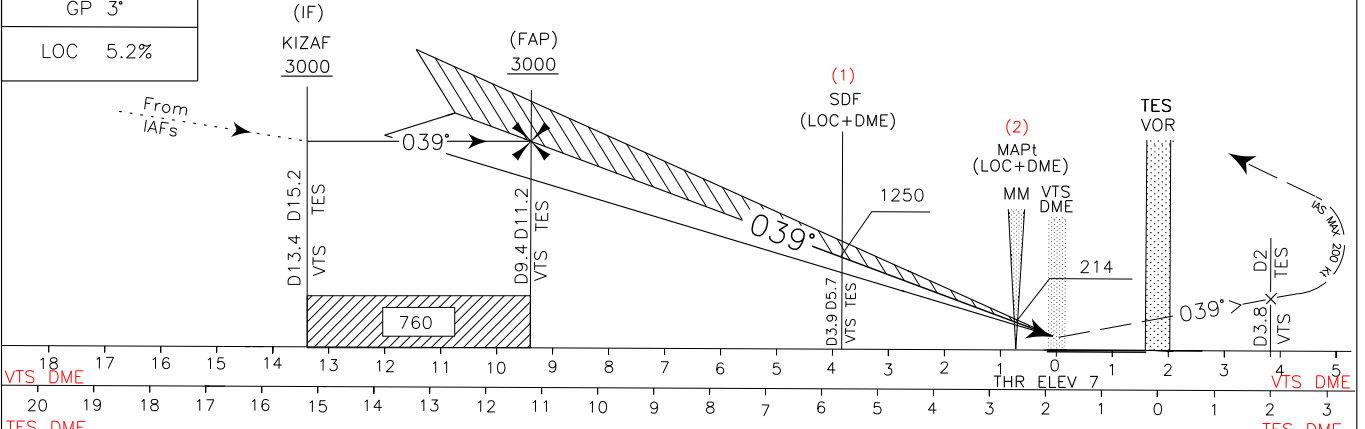
TRANSITION ALT 6000

RDH 15.55 M

GP 3°

LOC 5.2%

MISSED APPROACH: Proceed on TR 039° until 2 NM TES DME (3.8 NM VTS DME) climbing to 3000 ft, then turn right, with IAS MAX 200 kt, to intercept and follow RDL 100 TES VOR until point RDL 100/12 NM TES VOR/DME to join missed approach holding pattern. Hold between 9 NM and 12 NM TES DME, inbound TR 292°(RDL 112 TES VOR), right turns, IAS MAX 185 kt.



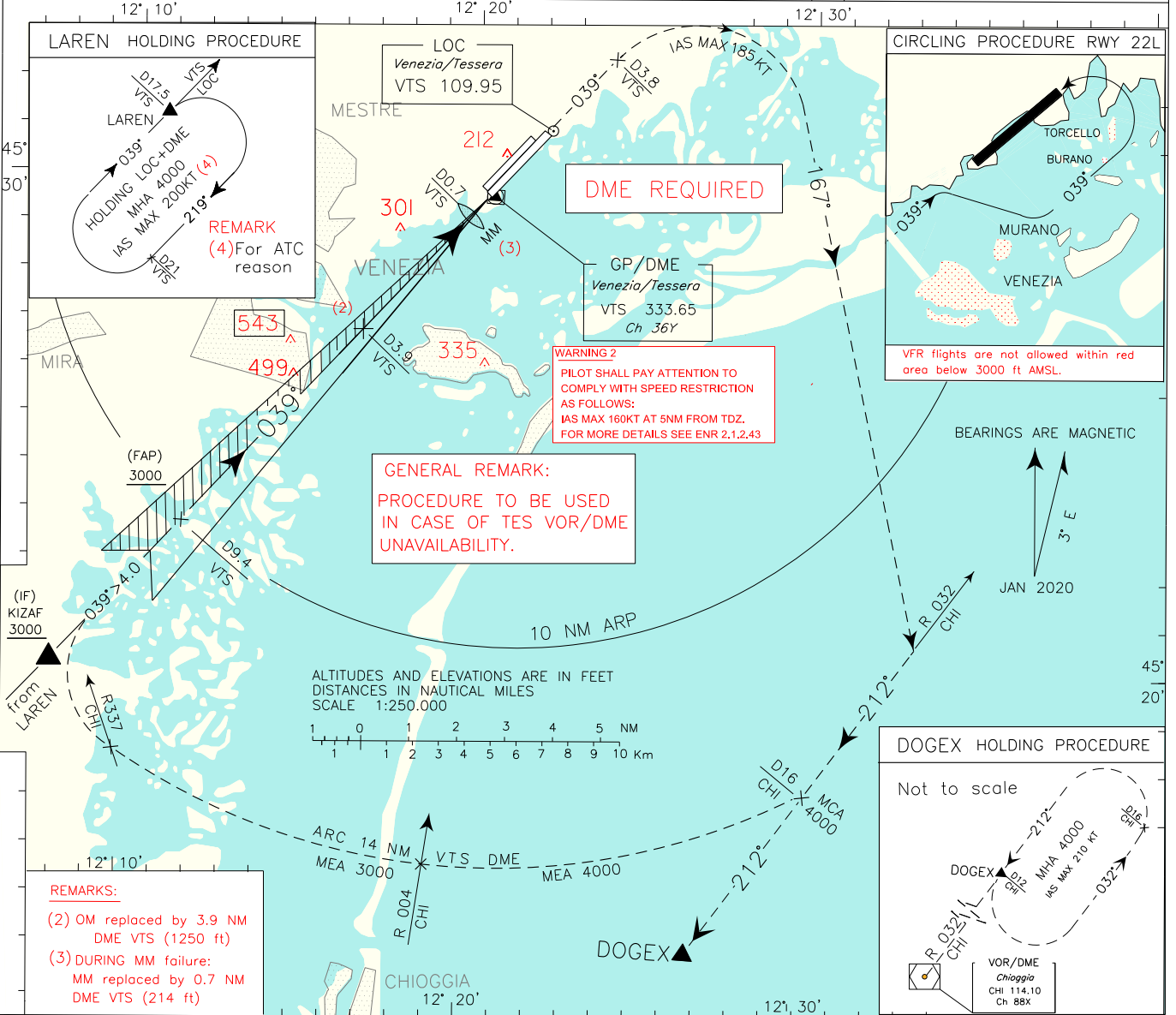
STRAIGHT IN APPROACH	OCA(OCH)				REMARK: (3) Circling procedure allowed south of RWY and only for RWY 22L as shown in the inset on the plan view.	FT PER MIN	GS	D3.9VTS-MM	MM-THR	TES DME	ALT (HGT)	MNM SECT ALT
	A	B	C	D								
ILS CAT I	184 (177)	196 (189)	204 (197)	215 (208)		530	100	1:57	0:18	7 NM	1657(1650)	
ILS CAT II	67 (60)	77 (70)	92 (85)	107 (100)		640	120	1:37	0:15	6 NM	1339(1332)	
LOC+DME	450 (443)					745	140	1:23	0:13	5 NM	1020(1013)	
CIRCLING (3)	580 (573)	600 (593)	730 (723)	950 (943)		850	160	1:13	0:11	4 NM	702 (695)	
						955	180	1:05	0:10	3 NM	383 (376)	

ICAO – INSTRUMENT APPROACH CHART

AD 2 LIPZ 5-7

DOC 8168 ED 6 – 2014. AMDT 7
CHANG: CHI NDB WITHDRAWN – TES VOR/DME INDICATIONS REMOVED

WARNING 1: Some users on ILS APCH reported false LOC captures. Pilot's attention is drawn to pay max caution. See AIP ENR 1.3	APP Venezia APP/Radar	118.900 (118.250)	AD ELEV	L I P Z	VENEZIA/TESSERA ILS or LOC X RWY 04R
	TWR Venezia TWR	120.200 (118.250)	7		
	ATIS Venice Arrival and Departure Information	128.650			



TRANSITION ALT 6000

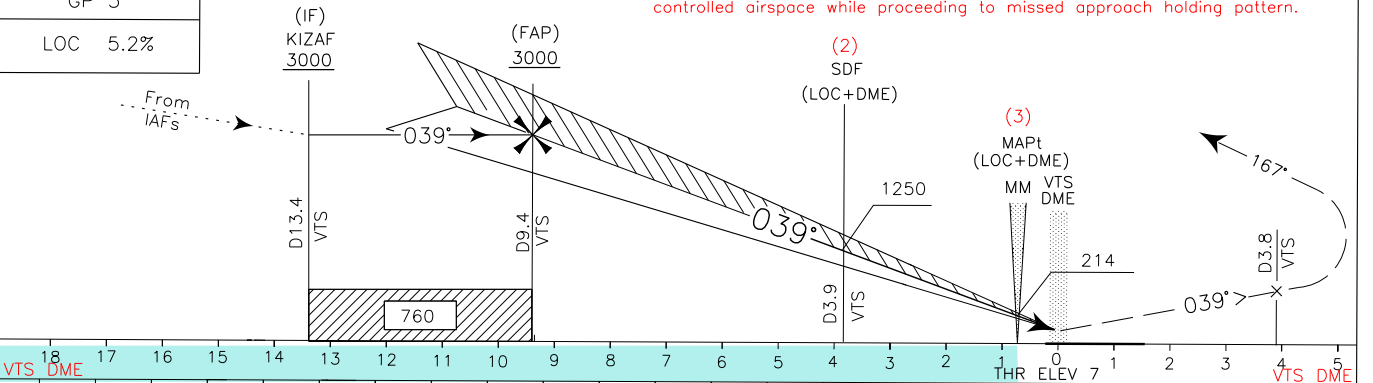
RDH 15.55 M

GP 3°

LOC 5.2%

MISSED APPROACH: Proceed on TR 039° until 3.8 NM VTS DME climbing to 4000 ft, then turn right on TR 167° (IAS MAX 185 kt) to intercept and follow RDL 032 CHI VOR (TR 212°). Hold between 12 NM and 16 NM CHI DME; inbound TR 212° (IAS MAX 210 kt), left turns.

REMARK: (4) Missed approach obstacles clearance is provided by 2.5% gradient. 5.0% (300ft/NM) is required to remain inside vertical limits of controlled airspace while proceeding to missed approach holding pattern.

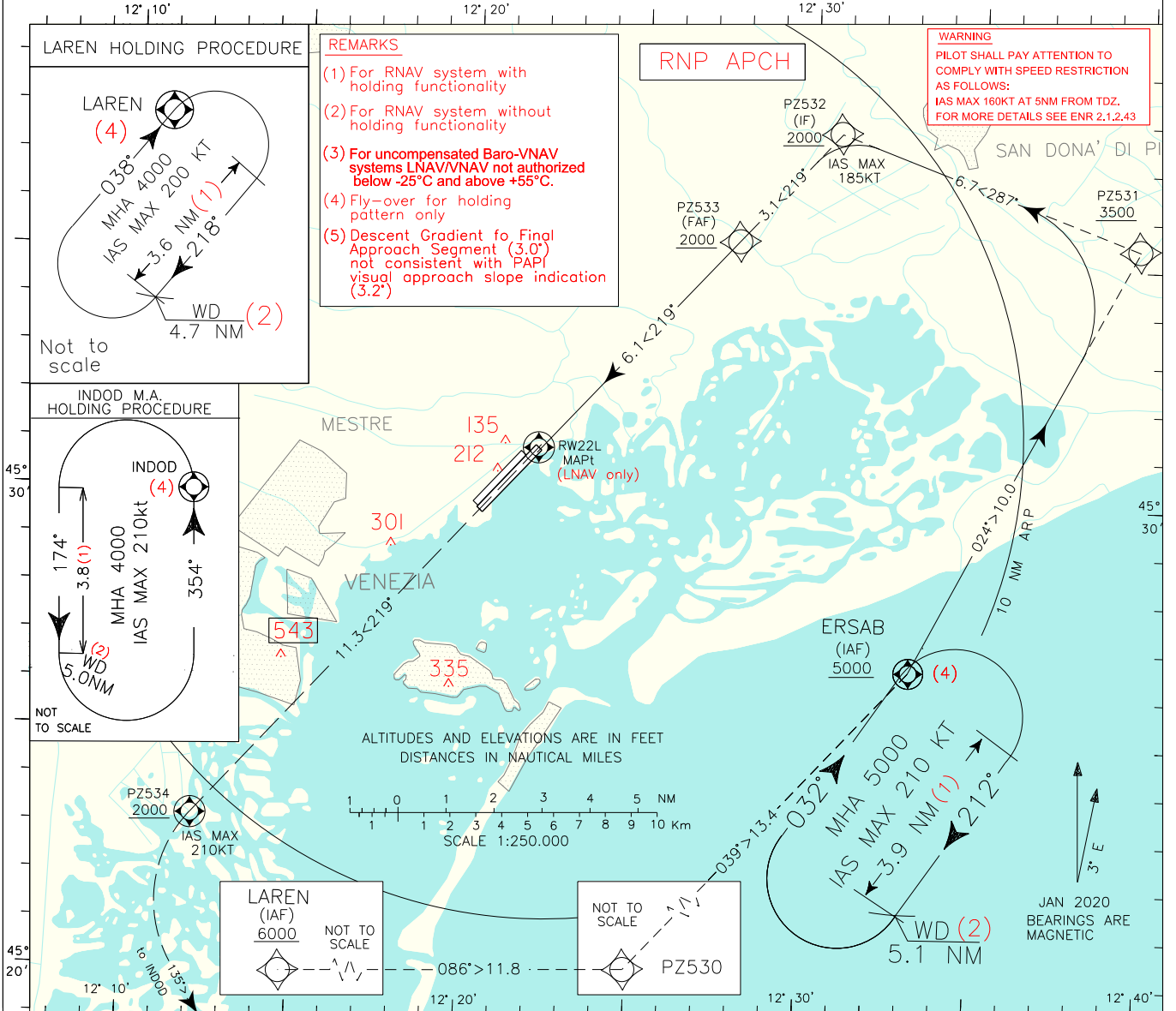


STRAIGHT IN APPROACH	OCA(OCH)				REMARK: (1) Circling procedure allowed south of RWY and only for RWY 22L as shown in the inset on the plan view.	FT PER MIN	GS	D3.9VTS-MM		MM-THR	VTS DME	ALT (HGT)	MNM SECT ALT	
	A	B	C	D				3.24 NM	0.49 NM				25NM	ARP
ILS CAT I	184(177)	196(189)	204(197)	215(208)		530	100	1:57	0:18	5 NM	1596(1589)			
ILS CAT II	67 (60)	77 (70)	92 (85)	107(100)		640	120	1:37	0:15	4 NM	1277(1270)			
LOC+DME	450 (443)					745	140	1:23	0:13	3 NM	958 (951)			
CIRCLING (1)	580 (573)	600 (593)	730 (723)	950 (943)		850	160	1:13	0:11	2 NM	639 (632)			
						955	180	1:05	0:10	1 NM	320 (313)			

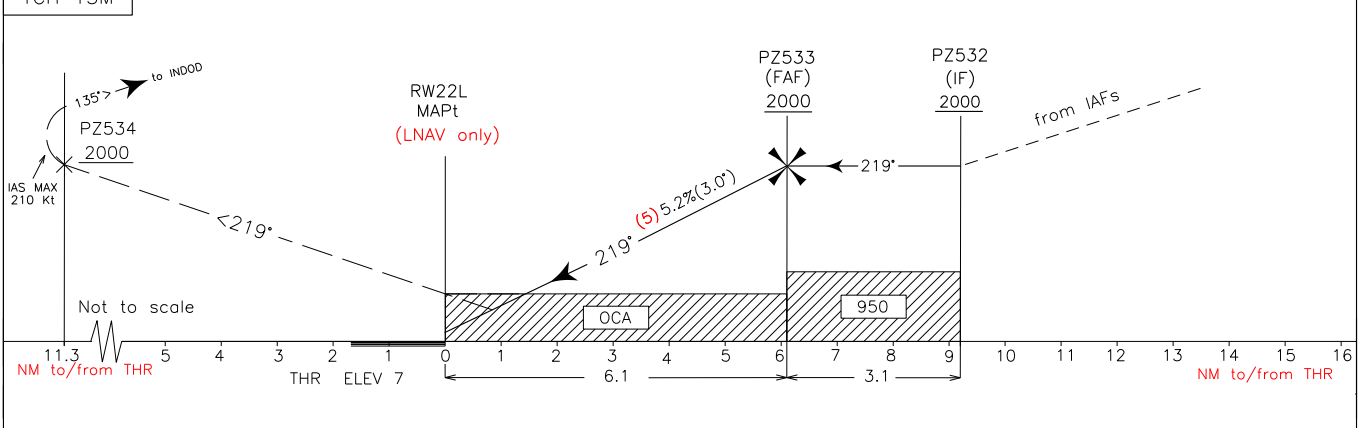
DOC 8168 ED 6 - 2014. AMDT 7

CHANGE: MAG VAR UPDATED - WARNING ADDED

EGNOS CH 48478 E22A	APP <i>Venezia APP/Radar</i> 118.900 (118.250) TWR <i>Venezia TWR</i> 120.200 (118.250) ATIS <i>Venice Arrival and Departure Information</i> 128.650	AD ELEV 7	L I P Z	VENEZIA/TESSERA RNP RWY 22L
---------------------------	--	------------------	------------------	------------------------------------



TRANSITION ALT 6000 MISSED APPROACH: Proceed on TR 219° climbing to 4000 ft. At PZ534, to be reached at 2000 ft or above, turn left (IAS MAX 210 Kt) on track 135° bound to INDOD and hold.



STRAIGHT IN APPROACH	OCA (OCH)	A	B	C	D	FT PER MIN	GS	FAF-THR	DIST from THR	ALT(HGT)	MNM SECT ALT 25 NM ARP	
	LPV	383 (376)	395 (388)	403 (396)	414 (407)							6.1
LNAV/VNAV	280 (273)	290 (283)	300 (293)	310 (303)		635	120	3:03	5 NM	1645 (1638)	<div style="border: 1px solid black; border-radius: 50%; width: 40px; height: 40px; display: flex; align-items: center; justify-content: center;"> 7200 </div>	
	LNAV	500 (493)					745	140	2:37	4 NM		1330 (1323)
CIRCLING	NOT ALLOWED											
						850	160	2:17	3 NM	1010 (1003)		
						955	180	2:02	2 NM	690 (683)		

TABULAR DESCRIPTION

RNP RWY 22L											
Serial Number	Path Terminator	Waypoint Identifier	Fly Over	Course °M(°T)	Magnetic Variation(°)	Distance (NM)	Turn Direction	Altitude (ft)	Speed Limit (kt)	VPA/TCH (m)	Navigation Specification
010	IF	LAREN	-	-	-	-	-	+6000	-	-	RNAV 1
020	TF	PZ530	-	086 (089.9)	-	11.8	-	-	-	-	RNAV 1
030	TF	ERSAB	-	039 (042.1)	-	13.4	-	+5000	-	-	RNAV 1
040	TF	PZ531	-	024 (027.4)	-	10.0	-	+3500	-	-	RNAV 1
050	TF	PZ532	-	287 (290.1)	-	6.7	L	+2000	185	-	RNAV 1
010	IF	ERSAB	-	-	-	-	-	+5000	-	-	RNAV 1
020	TF	PZ531	-	024 (027.4)	-	10.0	-	+3500	-	-	RNAV 1
030	TF	PZ532	-	287 (290.1)	-	6.7	L	+2000	185	-	RNAV 1
010	IF	PZ532	-	-	-	-	-	+2000	185	-	RNAV 1
020	TF	PZ533	-	219 (222.2)	-	3.1	-	+2000	-	-	RNP APCH
030	TF	RW22L	Y	219 (222.2)	-	6.1	-	@56	-	-3.0/15	RNP APCH
040	CF	PZ534	Y	219 (222.1)	3.0	11.3	-	+2000	210	-	RNP APCH
050	TF	INDOD	-	135 (137.6)	-	12.7	-	+4000	210	-	RNAV 1
060	HM	INDOD	Y	354 (357.0)	-	-	L	+4000	210	-	RNAV 1

Path Terminator	Waypoint Identifier	Inbound Course °M (°T)	Leg Distance (NM) (1)	Timing(min.)/ Waypoint Distance (NM) (2)	Turn Direction	Minimum Altitude (FT)	Maximum Altitude (FL)	Speed Limit (kt)	Magnetic Variation (°)	Navigation Specification
HM	LAREN	038 (042.0)	3.6	-/4.7	R	4000	-	200	3.0	RNAV 1
HM	ERSAB	032 (035.0)	3.9	-/5.1	R	5000	-	210	3.0	RNAV 1
HM	INDOD	354 (357.0)	3.8	-/5.0	L	4000	-	210	3.0	RNAV 1

(1) RNAV system with holding functionality

(2) RNAV system without holding functionality

WAYPOINT LIST RNP RWY 22L

Waypoint Identifier	Coordinates
PZ530	45°16'41.05"N 012°20'22.79"E
PZ531	45°35'29.19"N 012°39'41.40"E
PZ532	45°37'46.83"N 012°30'45.04"E
PZ533	45°35'29.61"N 012°27'47.67"E
PZ534	45°22'34.90"N 012°11'12.46"E

SBAS FAS DATA BLOCK LIPZ RNP RWY22L

INPUT DATA	
PARAMETERS	VALUES
Operation Type	0
SBAS Provider	1
Airport Identifier	LIPZ
Runway	22
Runway Direction	3
Approach Performance Designator	0
Route Indicator	
Reference Path Data Selector	0
Reference Path Identifier	E22A
LTP/FTP Latitude	453058.1630N
LTP/FTP Longitude	0122157.7695E
LTP/FTP Ellipsoidal Height (metres)	45.6
FPAP Latitude	452938.8615N
Delta FPAP Latitude (seconds)	-79.3015
FPAP Longitude	0122015.7930E
Delta FPAP Longitude (seconds)	-101.9765
Threshold Crossing Height	50.0
TCH Units Selector	0
Glidepath Angle (degrees)	3.00
Course Width (metres)	105.00
Length Offset (metres)	0
HAL	40.0
VAL	50.0

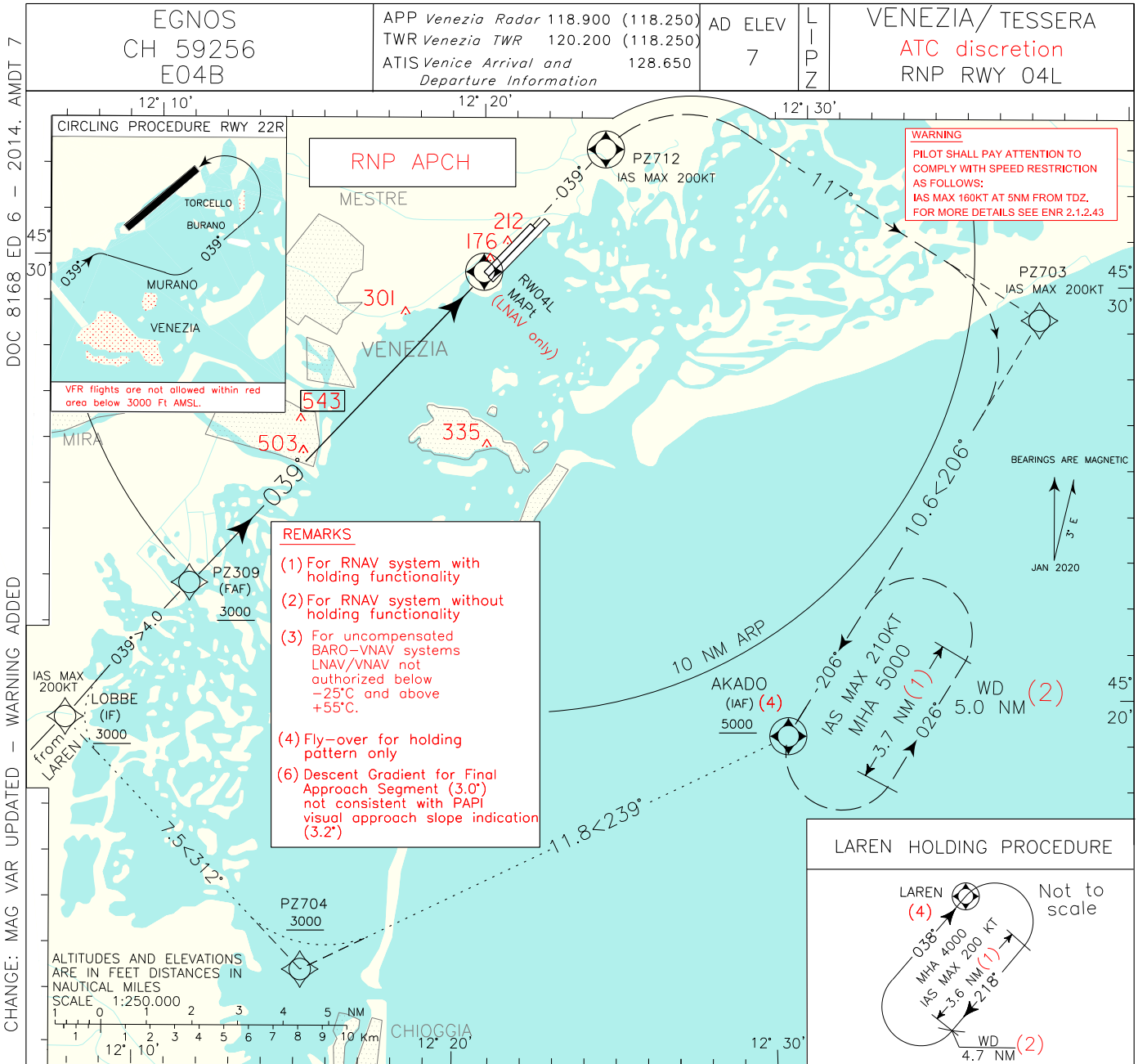
OUTPUT DATA	
Data Block	10 1A 10 09 0C D6 00 00 01 32 32 05 E6 8D 88 13 13 93 4E 05 C8 15 75 94 FD 4F E3 FC F4 01 2C 01 64 00 C8 FA E4 CA 3C 7A
Calculated CRC Value	E4CA3C7A

Required Additional Data (not CRC wrapped)

Parameters	Values
ICAO Code	LI
LTP/FTP Orthometric Height (metres)	2.0

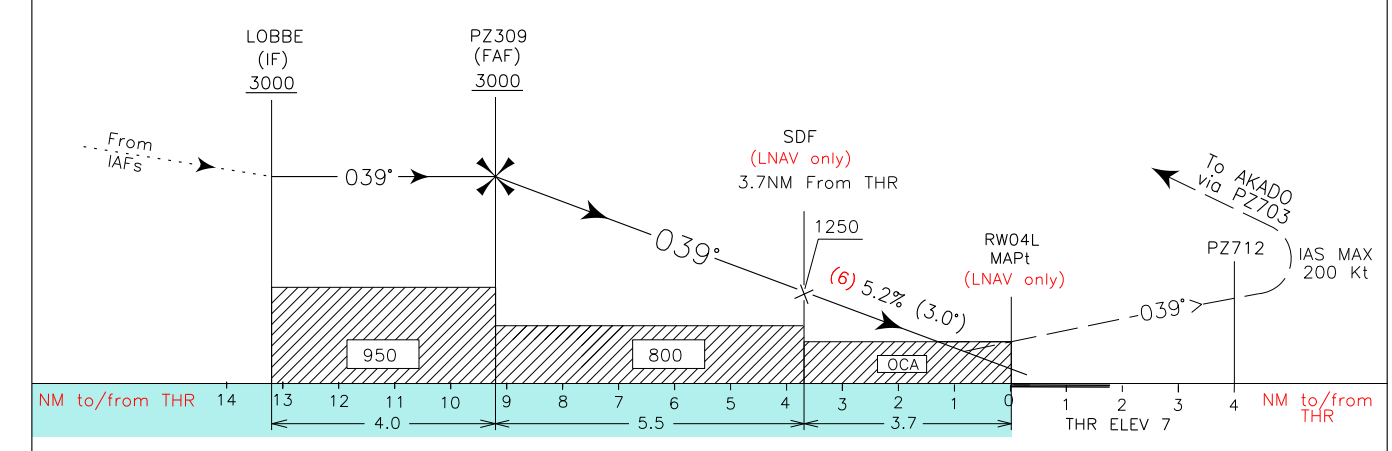
Intenzionalmente bianca

Intentionally left blank



TRANSITION ALT 6000
TCH 15.55M

MISSED APPROACH: Proceed on RWY heading climbing to 5000FT. At PZ712 turn right on course 117°(with IAS MAX 200 kt) and proceed to PZ703 then turn right bound to AKADO and hold.



OCA (OCH)		A	B	C	D	REMARK: (5) Circling procedure allowed south of RWY and only for RWY 22R as shown in LDG Chart plan view.	FT PER MIN	GS	FAF-THR 9.2 NM	DIST THR	ALT (HGT)	MNM SECT ALT 25NM	ARP
STRAIGHT IN APPROACH	LPV	270 (263)	281 (274)	290 (283)	300 (293)								
	LNAV/VNAV	330 (323)	340 (333)	350 (343)	360 (353)		530	100	5:32	6 NM	1965(1958)	7200 ⊕	
	LNAV	510 (503)					640	120	4:36	5 NM	1650(1643)		
	CIRCLING (5)	580 (573)	600 (593)	730 (723)	950 (943)		745	140	3:57	4 NM	1330(1323)		
							850	160	3:27	3 NM	1010(1003)		
							955	180	3:04	2 NM	695(688)		

TABULAR DESCRIPTION

RNP RWY04L											
Serial Number	Path Terminator	Waypoint Identifier	Fly Over	Course °M(°T)	Magnetic Variation(°)	Distance (NM)	Turn Direction	Altitude (ft)	Speed Limit (kt)	VPA/TCH (m)	Navigation Specification
010	IF	LAREN	-	-	-	-	-	+4000	-	-	RNAV 1
020	TF	LOBBE	-	038 (040.4)	-	4.2	-	+3000	200	-	RNAV 1
010	IF	AKADO	-	-	-	-	-	+5000	-	-	RNAV 1
020	TF	PZ704	-	239 (242.7)	-	11.8	-	+3000	-	-	RNAV 1
030	TF	LOBBE	-	312 (315.2)	-	7.5	-	+3000	200	-	RNAV 1
010	IF	LOBBE	-	-	-	-	-	+3000	200	-	RNAV 1
020	TF	PZ309	-	039 (041.9)	-	4.0	-	+3000	-	-	RNP APCH
030	TF	RW04L	Y	039 (41.9)	-	9.2	-	@58	-	-3.0/15.55	RNP APCH
040	CF	PZ712	Y	039 (42.1)	3.0	4.0	-	-	200	-	RNP APCH
050	CF	PZ703	-	117 (120.6)	3.0	-	-	-	200	-	RNAV 1
060	TF	AKADO	-	206 (209.5)	-	10.6	-	+5000	210	-	RNAV 1
070	HM	AKADO	Y	206 (210.0)	-	-	L	+5000	210	-	RNAV 1

Path Terminator	Waypoint Identifier	Inbound Course °M (°T)	Leg Distance (NM) (1)	Timing(min.)/Waypoint Distance (NM) (2)	Turn Direction	Minimum Altitude (FT)	Maximum Altitude (FL)	Speed Limit (kt)	Magnetic Variation (°)	Navigation Specification
HM	LAREN	038 (042.0)	3.6	-/4.7	R	4000	-	200	3.0	RNAV 1
HM	AKADO	206 (210.0)	3.7	-/5.0	L	5000	-	210	3.0	RNAV 1

(1) RNAV system with holding functionality

(2) RNAV system without holding functionality

WAYPOINT LIST

RNP RWY04L

Waypoint Identifier	Coordinates
PZ309	45°22'53.24"N 012°11'23.48"E
PZ712	45°32'40.26"N 012°23'56.56"E
PZ703	45°29'13.77"N 012°37'23.52"E
PZ704	45°14'34.43"N 012°15'07.44"E

SBAS FAS DATA BLOCK LIPZ RNP RWY04L

INPUT DATA	
PARAMETERS	VALUES
Operation Type	0
SBAS Provider	1
Airport Identifier	LIPZ
Runway	04
Runway Direction	3
Approach Performance Designator	0
Route Indicator	
Reference Path Data Selector	0
Reference Path Identifier	E04B
LTP/FTP Latitude	452943.5570N
LTP/FTP Longitude	0122009.2875E
LTP/FTP Ellipsoidal Height (metres)	45.7
FPAP Latitude	453049.3430N
Delta FPAP Latitude (seconds)	65.7860
FPAP Longitude	0122133.8585E
Delta FPAP Longitude (seconds)	84.5710
Threshold Crossing Height	15.55
TCH Units Selector	1
Glidepath Angle (degrees)	3.00
Course Width (metres)	105.00
Length Offset (metres)	0
HAL	40.0
VAL	50.0

OUTPUT DATA	
Data Block	10 1A 10 09 0C C4 00 00 02 34 30 05 0A 47 86 13 8F 43 4B 05 C9 15 F4 01 02 B6 94 02 37 81 2C 01 64 00 C8 FA 80 0C 46 5C
Calculated CRC Value	800C465C

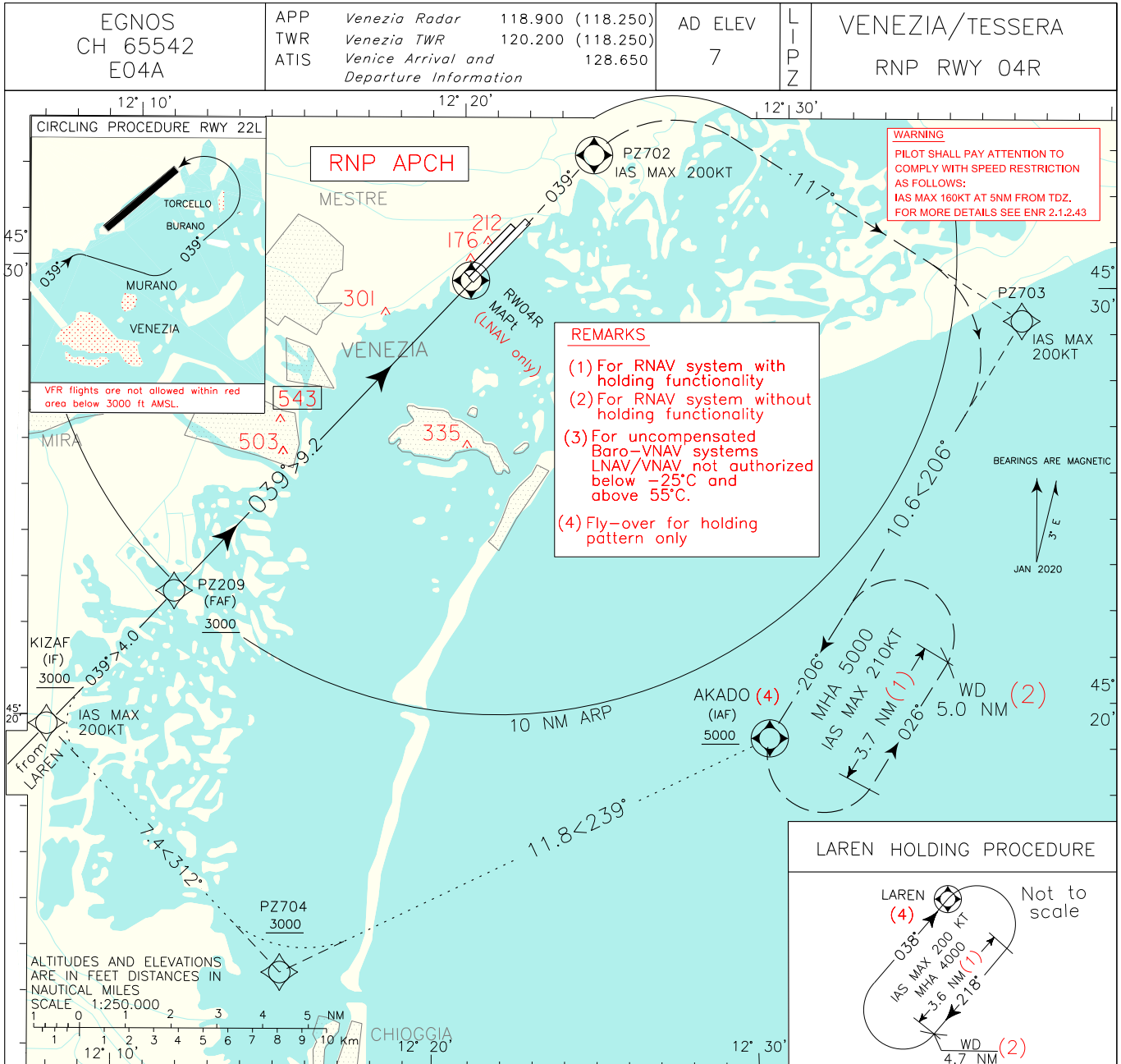
Required Additional Data (not CRC wrapped)

Parameters	Values
ICAO Code	LI
LTP/FTP Orthometric Height (metres)	2.1

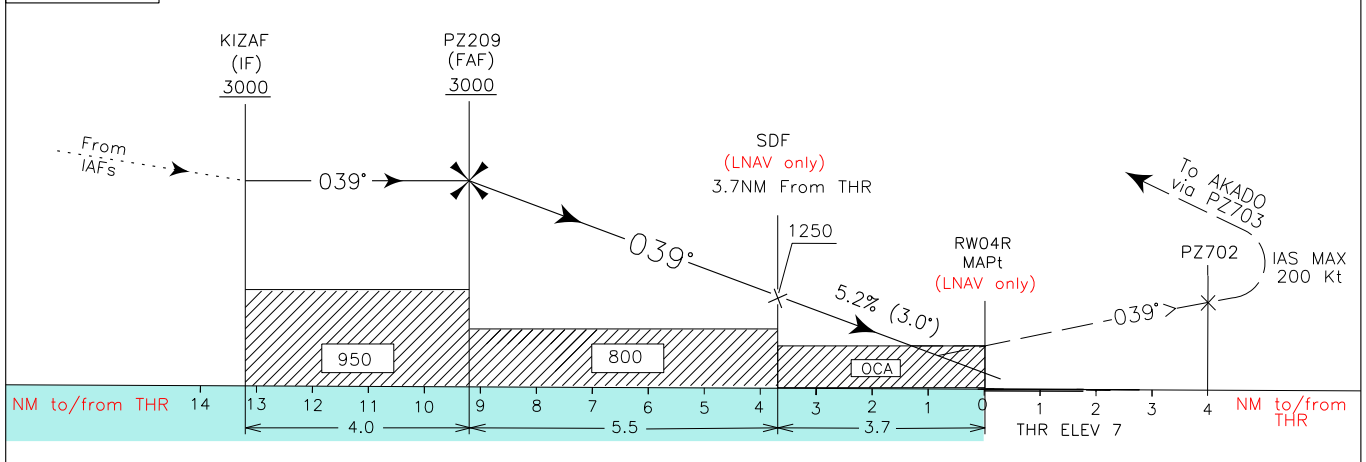
Intenzionalmente bianca

Intentionally left blank

DOC 8168 ED 6 – 2014. AMDT 7
CHANGE: MAG VAR UPDATED – WARNING ADDED



TRANSITION ALT 6000 MISSED APPROACH: Proceed on RWY heading climbing to 5000FT. At PZ702 turn right on course 117°(with IAS MAX 200 kt) and proceed to PZ703 then turn right bound to AKADO and hold.
TCH 15.55M



OCA(OCH)		A	B	C	D	REMARK (5) Circling procedure allowed south of RWY and only for RWY 22L as shown in LDG Chart plan view.	FT PER MIN	GS	FAF-THR	DIST THR	ALT (HGT)	MNM SECT ALT 25NM 7200 ARP
							9.2 NM					
STRAIGHT IN APPROACH	LPV	265 (258)	277 (270)	285 (278)	296 (289)		530	100	5:32	6 NM	1965(1958)	
	LNAV/VNAV	330 (323)	340 (333)	350 (343)	360 (353)		640	120	4:36	5 NM	1650(1643)	
	LNAV	470 (463)					745	140	3:57	4 NM	1330(1323)	
	CIRCLING (5)	580 (573)	600 (593)	730 (723)	950 (943)	850	160	3:27	3 NM	1010(1003)		
						955	180	3:04	2 NM	695(688)		

TABULAR DESCRIPTION

RNP RWY 04R											
Serial Number	Path Terminator	Waypoint Identifier	Fly Over	Course °M(°T)	Magnetic Variation(°)	Distance (NM)	Turn Direction	Altitude (ft)	Speed Limit (kt)	VPA/TCH (m)	Navigation Specification
010	IF	LAREN	-	-	-	-	-	+4000	-	-	RNAV 1
020	TF	KIZAF	-	039 (041.9)	-	4.0	-	+3000	200	-	RNAV 1
010	IF	AKADO	-	-	-	-	-	+5000	-	-	RNAV 1
020	TF	PZ704	-	239 (242.7)	-	11.8	-	+3000	-	-	RNAV 1
030	TF	KIZAF	-	312 (315.0)	-	7.4	-	+3000	200	-	RNAV 1
010	IF	KIZAF	-	-	-	-	-	+3000	200	-	RNAV 1
020	TF	PZ209	-	039 (041.9)	-	4.0	-	+3000	-	-	RNP APCH
030	TF	RW04R	Y	039 (41.9)	-	9.2	-	@58	-	-3.0/15.55	RNP APCH
040	CF	PZ702	Y	039 (42.1)	3.0	4.0	-	-	200	-	RNP APCH
050	CF	PZ703	-	117 (120.6)	3.0	-	-	-	200	-	RNAV 1
060	TF	AKADO	-	206 (209.5)	-	10.6	-	+5000	210	-	RNAV 1
070	HM	AKADO	Y	206 (210.0)	-	-	L	+5000	210	-	RNAV 1

Path Terminator	Waypoint Identifier	Inbound Course °M (°T)	Leg Distance (NM) (1)	Timing(min.)/ Waypoint Distance (NM) (2)	Turn Direction	Minimum Altitude (FT)	Maximum Altitude (FL)	Speed Limit (kt)	Magnetic Variation (°)	Navigation Specification
HM	LAREN	038 (042.0)	3.6	-/4.7	R	4000	-	200	3.0	RNAV 1
HM	AKADO	206 (210.0)	3.7	-/5.0	L	5000	-	210	3.0	RNAV 1

(1) RNAV system with holding functionality

(2) RNAV system without holding functionality

WAYPOINT LIST

RNP RWY 04R

Waypoint Identifier	Coordinates
PZ209	45°22'47.34"N 012°11'28.63"E
PZ702	45°32'35.91"N 012°24'03.41"E
PZ703	45°29'13.77"N 012°37'23.52"E
PZ704	45°14'34.43"N 012°15'07.44"E

SBAS FAS DATA BLOCK LIPZ RNP RWY 04R

INPUT DATA	
PARAMETERS	VALUES
Operation Type	0
SBAS Provider	1
Airport Identifier	LIPZ
Runway	04
Runway Direction	1
Approach Performance Designator	0
Route Indicator	
Reference Path Data Selector	0
Reference Path Identifier	E04A
LTP/FTP Latitude	452938.8615N
LTP/FTP Longitude	0122015.7930E
LTP/FTP Ellipsoidal Height (metres)	45.7
FPAP Latitude	453059.8165N
Delta FPAP Latitude (seconds)	80.9515
FPAP Longitude	0122159.8940E
Delta FPAP Longitude (seconds)	104.0980
Threshold Crossing Height	15.55
TCH Units Selector	1
Glidepath Angle (degrees)	3.00
Course Width (metres)	105.00
Length Offset (metres)	72
HAL	40.0
VAL	50.0

OUTPUT DATA	
Data Block	10 1A 10 09 0C 44 00 00 01 34 30 05 5B 22 86 13 62 76 4B 05 C9 15 76 78 02 4A 2D 03 37 81 2C 01 64 09 C8 FA 84 B6 49 E5
Calculated CRC Value	84B649E5

Required Additional Data (not CRC wrapped)

Parameters	Values
ICAO Code	LI
LTP/FTP Orthometric Height (metres)	2.1

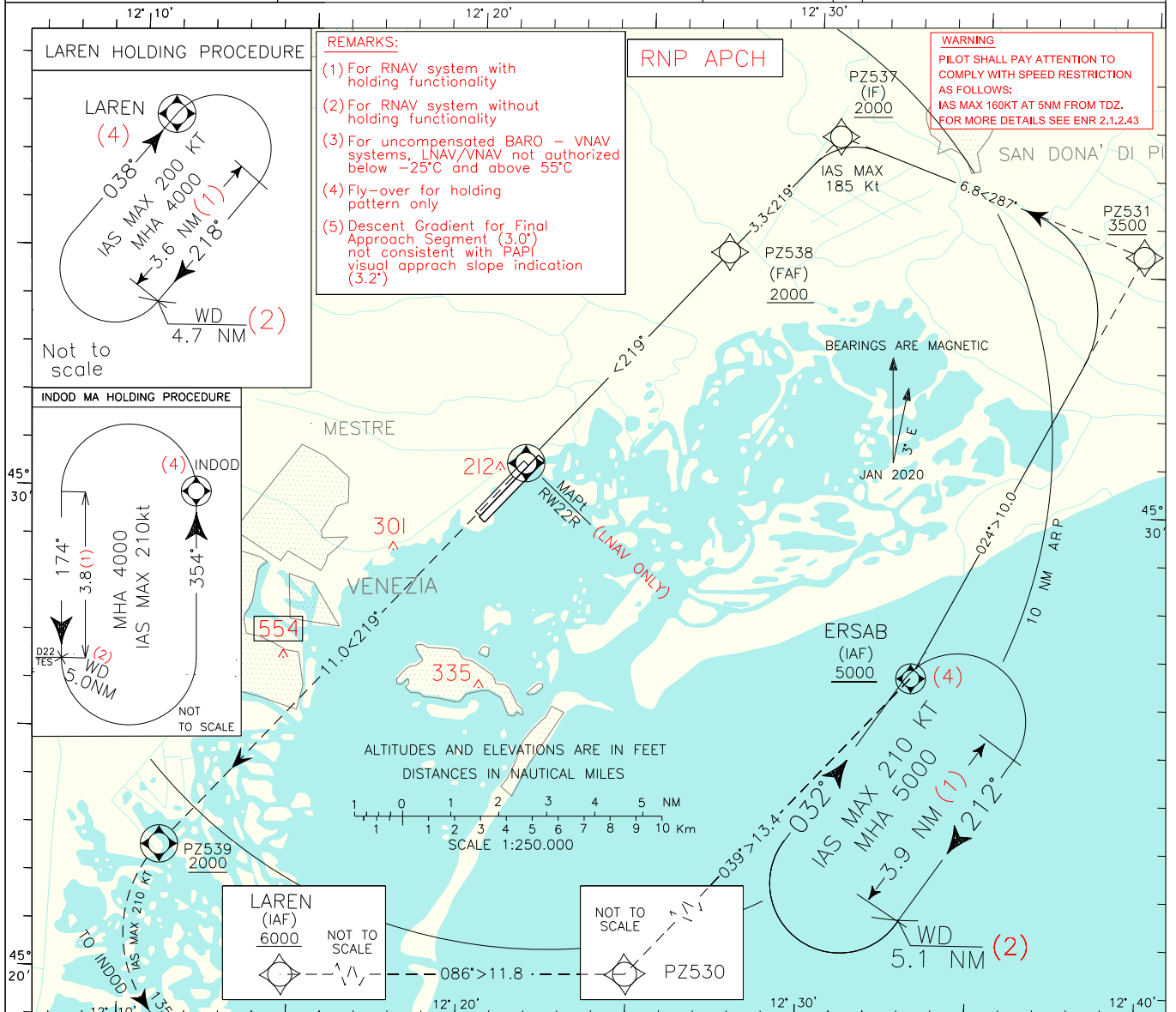
Intenzionalmente bianca

Intentionally left blank

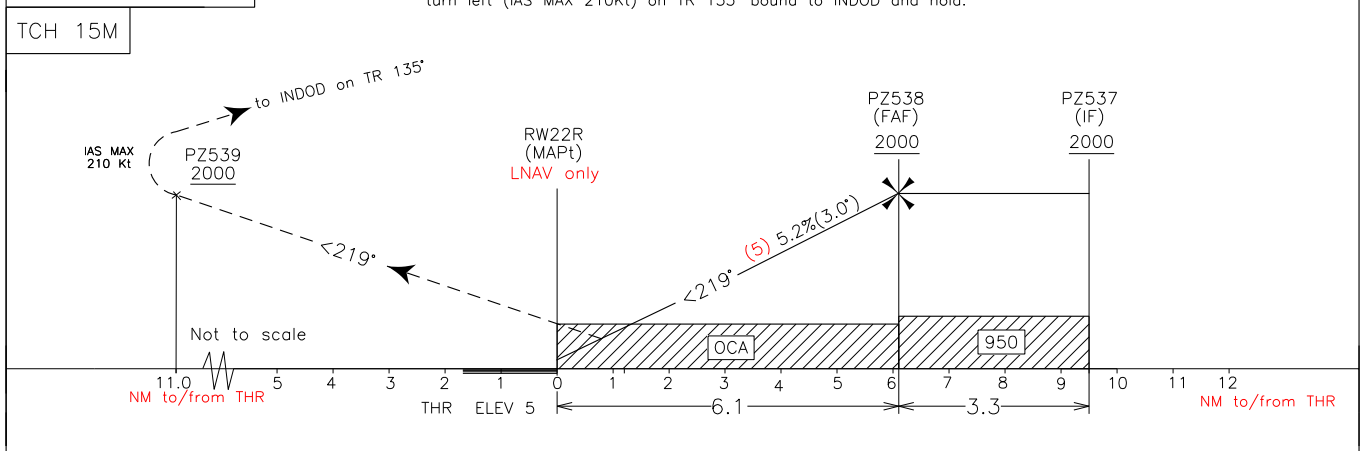
EGNOS CH 88224 E22B	APP	Venezia APP/Radar	118.900 (118.250)	AD ELEV	L I P Z	VENEZIA/ TESSERA RNP RWY 22R
	TWR	Venezia TWR	120.200 (118.250)	7		
	ATIS	Venice Arrival and Departure Information	128.650			

DOC 8168 ED 6 - 2014. AMDT 7

CHANGE: REPRINTING



TRANSITION ALT 6000 MISSED APPROACH: Proceed on TR 219° climbing to 4000 Ft. At PZ539, to be reached at 2000 ft or above, turn left (IAS MAX 210Kt) on TR 135° bound to INDOD and hold.



STRAIGHT IN APPROACH	OCA (OCH)	A	B	C	D	FT PER MIN	GS	DIST from THR	ALT(HGT)	MNM SECT ALT 25 NM ARP
	LPV	383 (378)	395 (390)	403 (398)	414 (409)	530	100			
LNAV/VNAV	310 (305)	320 (315)	410 (405)	420 (415)	635	120	5 NM	1650 (1645)		
LNAV	510 (503)				745	140	4 NM	1330 (1325)		
CIRCLING	CIRCLING NOT ALLOWED				850	160	3 NM	1010 (1005)		
					955	180	2 NM	690 (685)		

TABULAR DESCRIPTION

RNP RWY22R											
Serial Number	Path Terminator	Waypoint Identifier	Fly Over	Course °M(°T)	Magnetic Variation(°)	Distance (NM)	Turn Direction	Altitude (ft)	Speed Limit (kt)	VPA/TCH	Navigation Specification
010	IF	LAREN	-	-	-	-	-	+6000	-	-	RNAV 1
020	TF	PZ530	-	086 (089.9)	-	11.8	-	-	-	-	RNAV 1
030	TF	ERSAB	-	039 (042.1)	-	13.4	-	+5000	-	-	RNAV 1
040	TF	PZ531	-	024 (027.5)	-	10.0	-	+3500	-	-	RNAV 1
050	TF	PZ537	-	287 (290.0)	-	6.8	L	+2000	-185	-	RNP APCH
010	IF	ERSAB	-	-	-	-	-	+5000	-	-	RNAV 1
020	TF	PZ531	-	024 (027.5)	-	10.0	-	+3500	-	-	RNAV 1
030	TF	PZ537	-	287 (290.0)	-	6.8	L	+2000	-185	-	RNP APCH
010	TF	PZ537	-	-	-	-	-	+2000	-185	-	RNP APCH
020	TF	PZ538	-	219 (222.2)	-	3.3	-	+2000	-	-	RNP APCH
030	TF	RW22R	Y	219 (222.1)	-	6.1	-	@55	-	-3.0/15	RNP APCH
040	CF	PZ539	Y	219 (222.0)	-	11.0	-	+2000	-210	-	RNP APCH
050	TF	INDOD	-	135 (137.7)	-	14.4	L	+4000	-210	-	RNAV 1
060	HM	INDOD	Y	354 (357.0)	-	-	L	+4000	-210	-	RNAV 1

Path Terminator	Waypoint Identifier	Inbound Course °M (°T)	Leg Distance (NM) (1)	Timing(min.)/ Waypoint Distance (NM) (2)	Turn Direction	Minimum Altitude (FT)	Maximum Altitude (FL)	Speed Limit (kt)	Magnetic Variation (°)	Navigation Specification
HM	LAREN	038 (042.0)	3.6	-/4.7	R	4000	-	200	3.0	RNAV 1
HM	ERSAB	032 (035.0)	3.9	-/5.1	R	5000	-	210	3.0	RNAV 1
HM	INDOD	354 (357.0)	3.8	-/5.0	L	4000	-	210	3.0	RNAV 1

(1) RNAV system with holding functionality

(2) RNAV system without holding functionality

WAYPOINT LIST

RNP RWY22R

Waypoint Identifier	Coordinates
PZ530	45°16'41.05"N 012°20'22.79"E
PZ531	45°35'29.19"N 012°39'41.40"E
PZ537	45°37'49.25"N 012°30'35.57"E
PZ538	45°35'20.90"N 012°27'23.82"E
PZ539	45°22'39.25"N 012°11'05.61"E

SBAS FAS DATA BLOCK LIPZ RNP RWY22R

INPUT DATA	
PARAMETERS	VALUES
Operation Type	0
SBAS Provider	1
Airport Identifier	LIPZ
Runway	22
Runway Direction	1
Approach Performance Designator	0
Route Indicator	
Reference Path Data Selector	0
Reference Path Identifier	E22B
LTP/FTP Latitude	453049.3430N
LTP/FTP Longitude	0122133.8585E
LTP/FTP Ellipsoidal Height (metres)	45.3
FPAP Latitude	452943.5570N
Delta FPAP Latitude (seconds)	-65.7860
FPAP Longitude	0122009.2875E
Delta FPAP Longitude (seconds)	-84.5710
Threshold Crossing Height	50.0
TCH Units Selector	0
Glidepath Angle (degrees)	3.00
Course Width (metres)	105.00
Length Offset (metres)	0
HAL (metres)	40.0
VAL (metres)	50.0

OUTPUT DATA	
Data Block	10 1A 10 09 0C 56 00 00 02 32 32 05 FE 48 88 13 45 D8 4D 05 C5 15 0C FE FD 4A 6B FD F4 01 2C 01 64 00 C8 FA 22 63 89 2E
Calculated CRC Value	2263892E

Required Additional Data (not CRC wrapped)

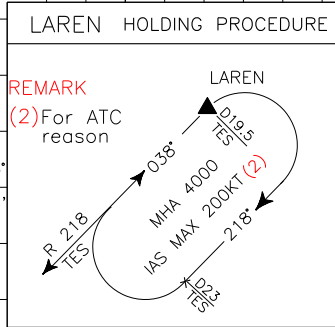
Parameters	Values
ICAO Code	LI
LTP/FTP Orthometric Height (metres)	1.6

ICAO – INSTRUMENT APPROACH CHART

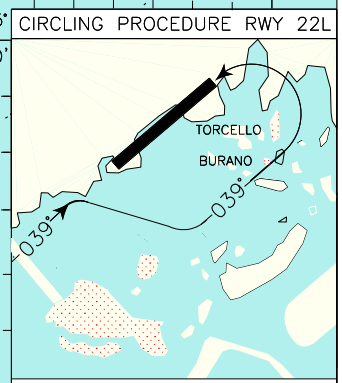
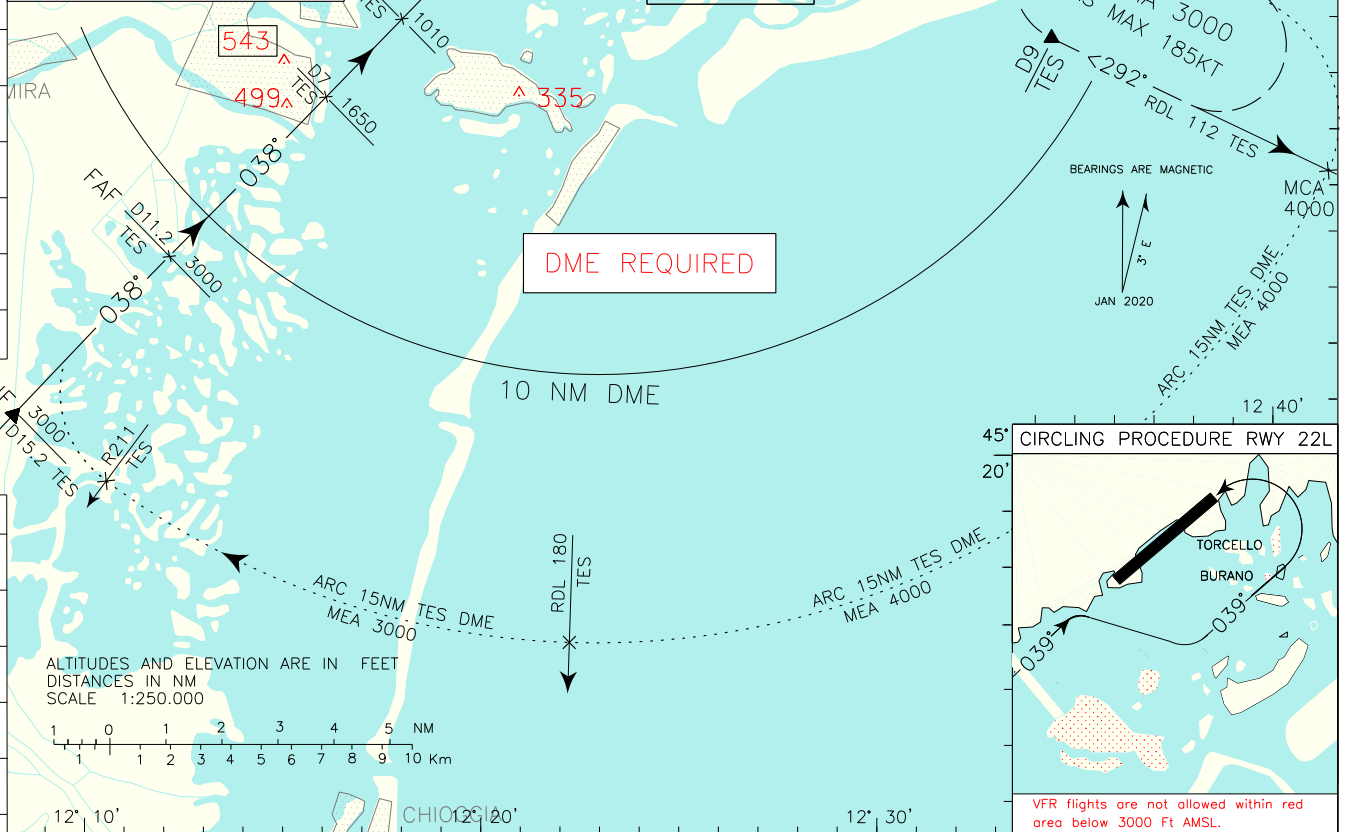
AD 2 LIPZ 5-25

APP	Venezia Radar	118.900 (118.250)	AD ELEV	LIPZ	VENEZIA/ TESSERA
TWR	Venezia TWR	120.200 (118.250)	7		VOR RWY 04R
ATIS	Venice Arrival and Departure Information	128.650			

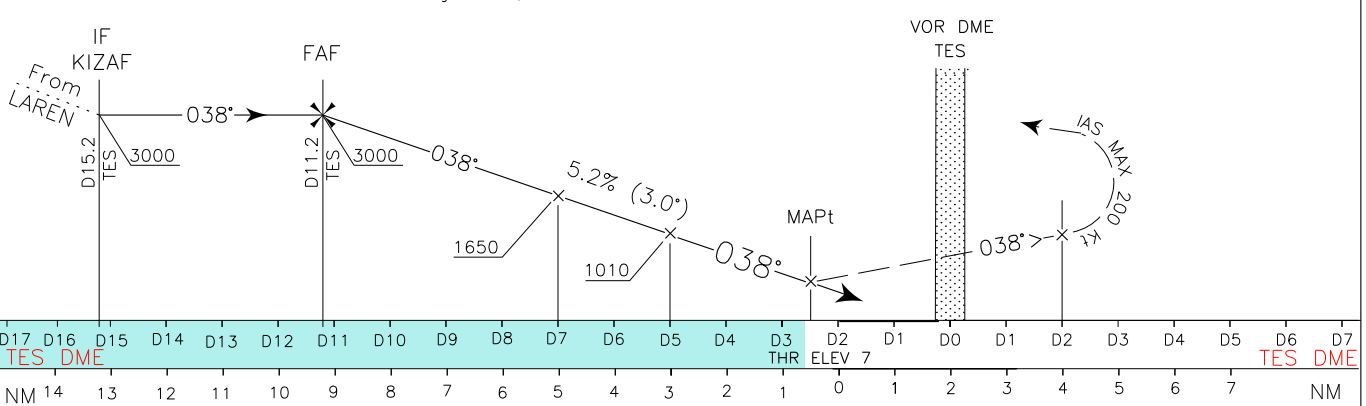
CHANGE: WARNING 1 ADDED – MAG VAR UPDATED DOC 8168 ED 6 – 2014. AMDT 7



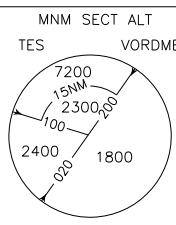
WARNING 1
PILOT SHALL PAY ATTENTION TO COMPLY WITH SPEED RESTRICTION AS FOLLOWS:
IAS MAX 160KT AT 5NM FROM TDZ.
FOR MORE DETAILS SEE ENR 2.1.2.43



TRANSITION ALT 6000 MISSED APPROACH: Proceed on TR 038° until 2 NM TES DME climbing to 3000 ft, then turn right, with IAS MAX 200 kt, to intercept and follow RDL 100 TES VOR until point RDL 100/12 NM TES VOR/DME to join missed approach holding pattern. Hold between 9 NM and 12 NM TES DME, inbound TR 292°(RDL 112 TES VOR), right turns, IAS MAX 185 kt.



STRAIGHT IN APPROACH	OCA(OCH)	A	B	C	D	REMARK: (1) Circling procedure allowed SOUTH of RWY and only for RWY 22L as shown in the inset on the plan view.	GS	FT PER MIN	FAF-MAPt	DIST TES DME	ALT (HGT)	MNM SECT ALT TES			
	VOR+DME	550 (543)							8.7 NM				100 530	5:13	8 NM 1965(1958)
	CIRCLING (1)	580 (573)	600 (593)	730 (723)	950 (943)				140 745				3:44	6 NM 1330(1323)	



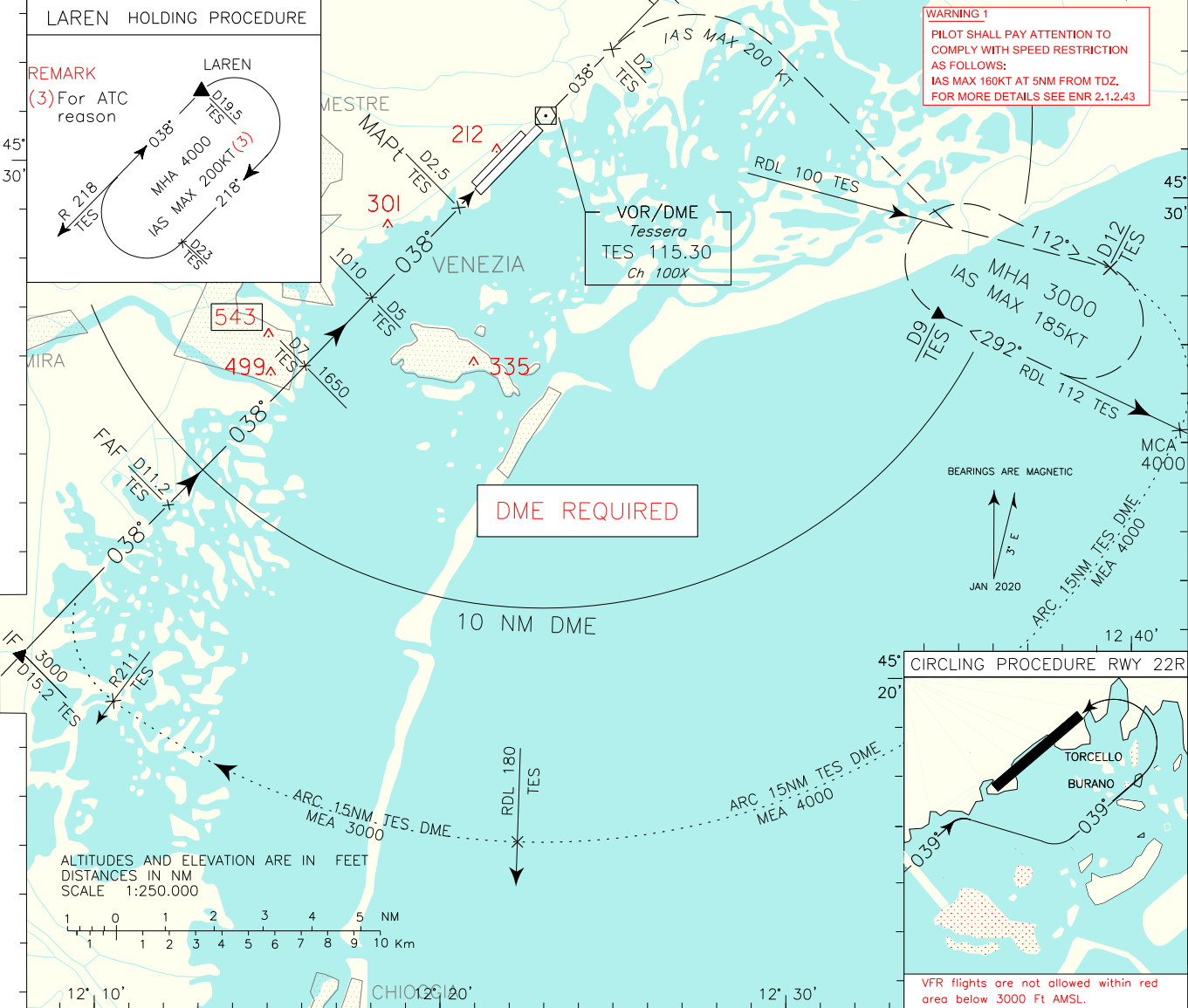
REMARK:
 (2) Descent Gradient for Final Approach Segment (3.0°) not consistent with PAPI visual approach slope indication (3.2°)

APP Venezia Radar 118.900 (118.250)
 TWR Venezia TWR 120.200 (118.250)
 ATIS Venice Arrival and Departure Information

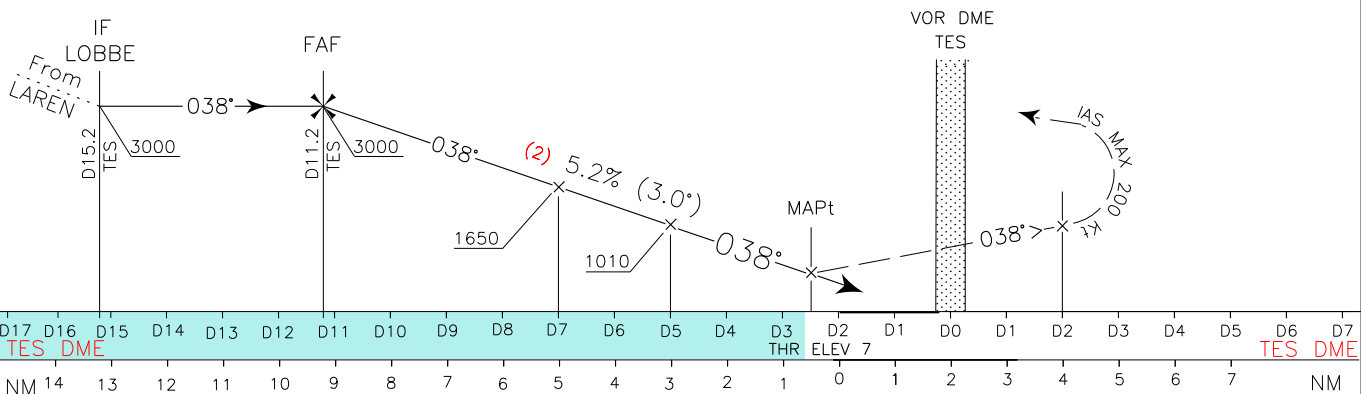
AD ELEV 7

LIPZ VENEZIA/ TESSERA
 ATC discretion
 VOR RWY 04L

DOC 8168 ED 6 – 2014. AMDT 7
 CHANGE: WARNING 1 ADDED – MAG VAR UPDATED



TRANSITION ALT 6000 MISSED APPROACH: Proceed on TR 038° until 2 NM TES DME climbing to 3000 ft, then turn right, with IAS MAX 200 kt, to intercept and follow RDL 100 TES VOR until point RDL 100/12 NM TES VOR/DME to join missed approach holding pattern. Hold between 9 NM and 12 NM TES DME, inbound TR 292°(RDL 112 TES VOR), right turns, IAS MAX 185 kt.



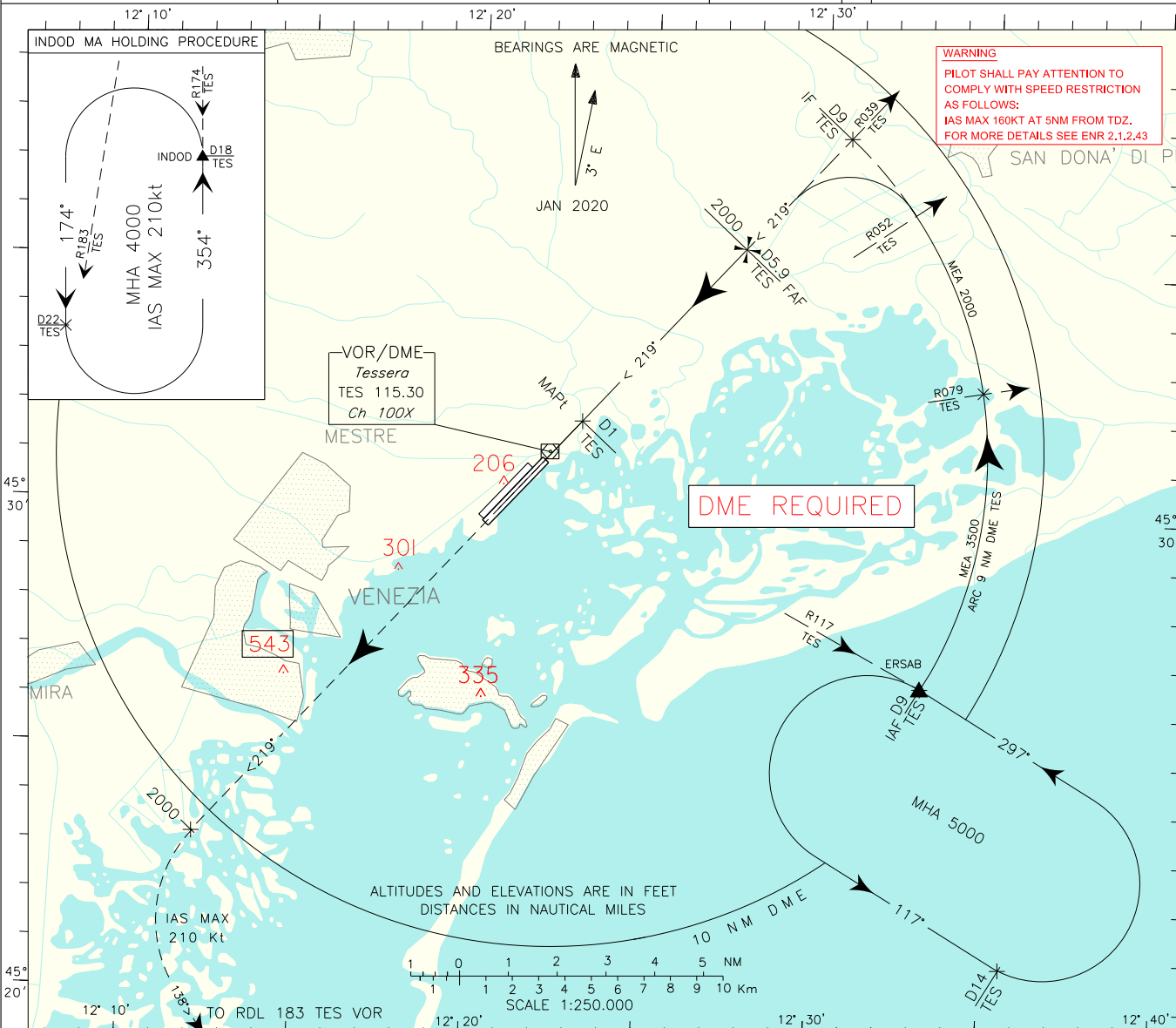
OCA(OCH)		A	B	C	D	REMARK: (1) Circling procedure allowed SOUTH of RWY and only for RWY 22R as shown in the inset on the plan view.	GS	FT PER MIN	FAF-MAP 8.7 NM	DIST TES DME	ALT (HGT)	MNM SECT ALT TES VORDME
STRAIGHT IN APPROACH	VOR+DME	550 (543)					100	530	5:13	8 NM	1965(1958)	
	CIRCLING (1)	580 (573)	600 (593)	730 (723)	950 (943)		120	640	4:21	7 NM	1650(1643)	

DOC 8168 ED 6 - 2014. AMDT 7
CHANGE: WARNING ADDED - MAG VAR UPDATED

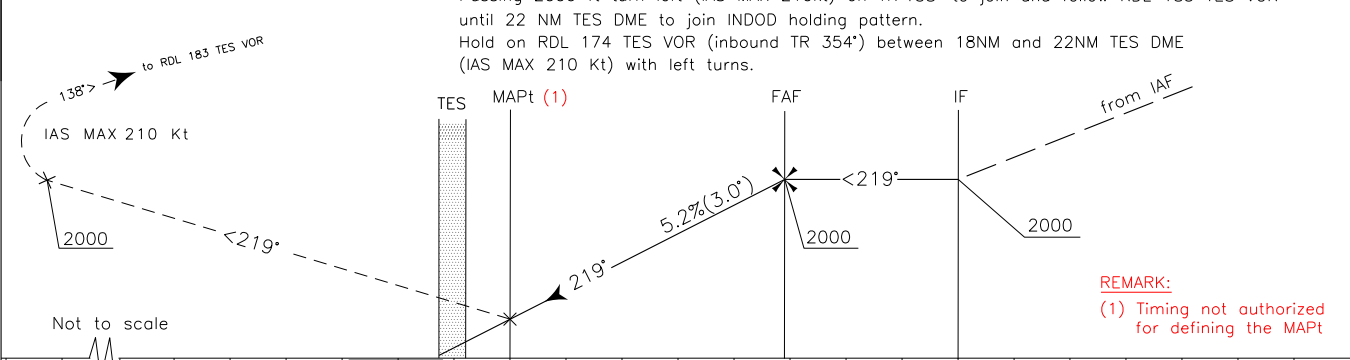
APP *Venezia Radar* 118.900 (118.250)
TWR *Venezia TWR* 120.200 (118.250)
ATIS *Venice Arrival and Departure Information* 128.650

AD ELEV 7
LIPZ

VENEZIA/TESSERA
VOR RWY 22L



TRANSITION ALT 6000 MISSED APPROACH: At 1 NM TES DME climb to 4000 ft and proceed on TR 219°. Passing 2000 ft turn left (IAS MAX 210kt) on TR 138° to join and follow RDL 183 TES VOR until 22 NM TES DME to join INDOD holding pattern. Hold on RDL 174 TES VOR (inbound TR 354°) between 18NM and 22NM TES DME (IAS MAX 210 Kt) with left turns.



TES DME	D10	D9	D8	D7	D6	D5	D4	D3	D2	D1	D0	D0	D1	D2	D3	D4	D5	D6	D7	D8	D9	D10	D11	D12	D13	D14	D15	TES DME
NM	5	4	3	2	1	0	1	2	3	4	5	6	7	8	9	10	11	12	13	14	15	16	NM					

STRAIGHT IN APPROACH	OCA (OCH)	A	B	C	D	FT PER MIN	GS	DIST(TESS)	ALT(HGT)	MNM SECT ALT TES	VOR/DME					
	VOR DME	430 (423)										530	100			
CIRCLING	NOT ALLOWED											635	120	5DME	1700 (1693)	
	850	160	3DME	1060 (1053)												
	955	180	2DME	740 (733)												

REMARK:
 (1) Descent Gradient for Final Approach Segment (3.0°) not consistent with PAPI visual approach slope indication (3.2°)

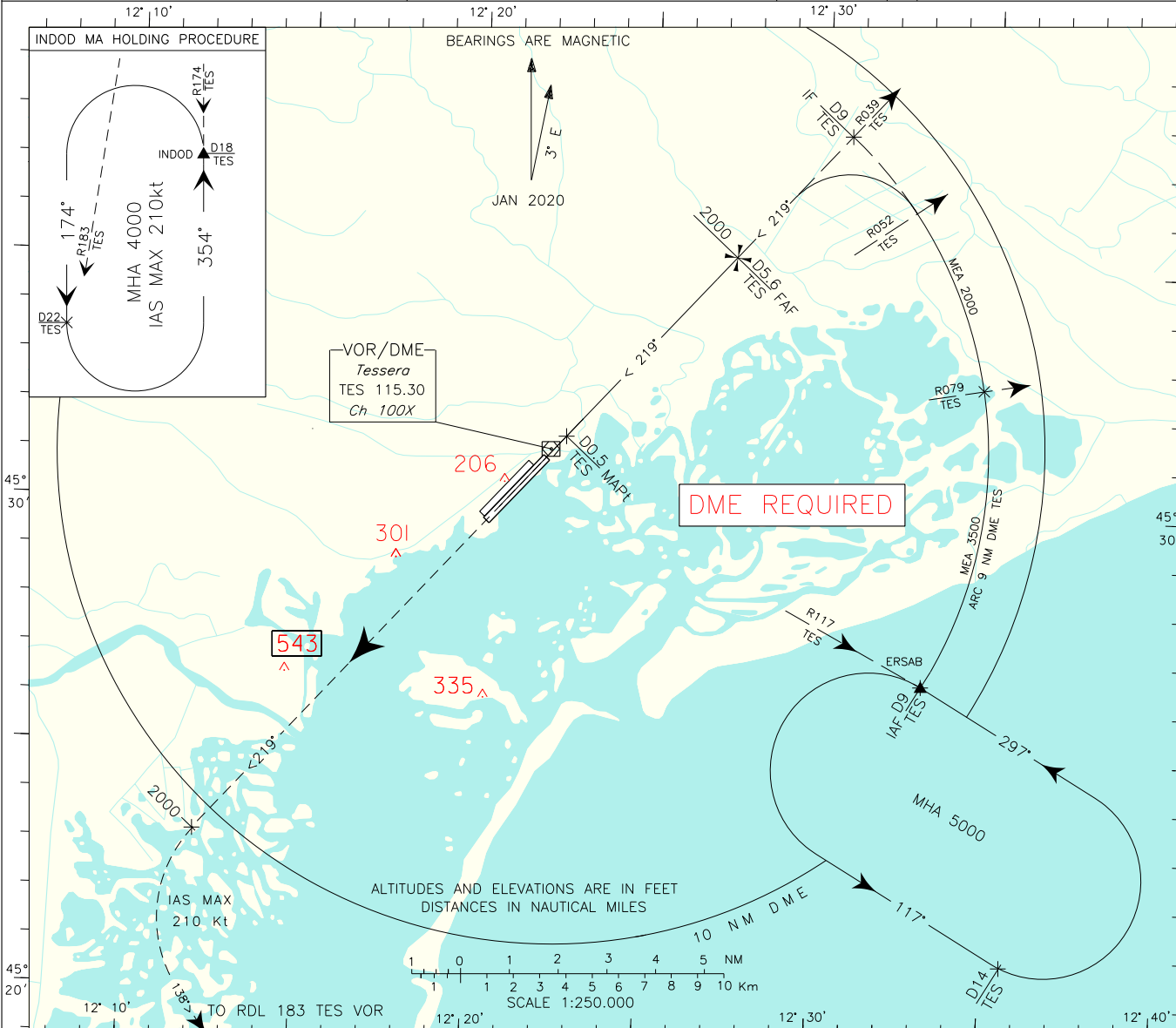
APP Venezia APP/ Radar 118.900 (118.250)
 TWR Venezia TWR 120.200 (118.250)
 ATIS Venice Arrival and Departure Information 128.650

AD ELEV 7

VENEZIA/TESSERA
 ATC DISCRETION
 VOR RWY 22R

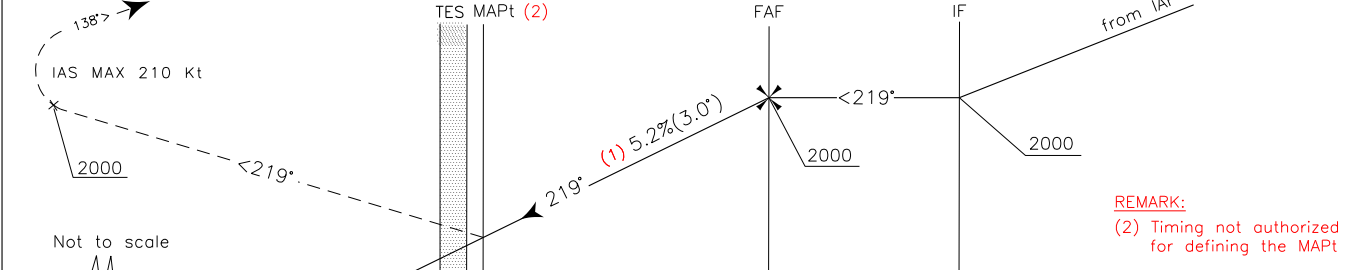
DOC 8168 ED 6 – 2014. AMDT 7

CHANGE: MAGNETIC VARIATION UPDATED



TRANSITION ALT 6000

MISSED APPROACH: At 0.5 NM TES DME climb to 4000 ft and proceed on TR 219°. Passing 2000 ft turn left (IAS MAX 210kt) on TR 138° to join and follow RDL 183 TES VOR until 22 NM TES DME to join INDOD holding pattern.
 Hold on RDL 174 TES VOR (inbound TR 354°) between 18NM and 22NM TES DME (IAS MAX 210 Kt) with left turns.



REMARK:
 (2) Timing not authorized for defining the MAPT

TES DME	D5	D4	D3	D2	D1	D0	D1	D2	D3	D4	D5	D6	D7	D8	D9	D10	D11	D12	D13	D14	D15	TES DME
---------	----	----	----	----	----	----	----	----	----	----	----	----	----	----	----	-----	-----	-----	-----	-----	-----	---------

NM	5	4	3	2	1	0	1	2	3	4	5	6	7	8	9	10	11	12	13	14	15	16	NM
----	---	---	---	---	---	---	---	---	---	---	---	---	---	---	---	----	----	----	----	----	----	----	----

OCA (OCH)		A	B	C	D
STRAIGHT IN APPROACH	VOR DME	430 (423)			
CIRCLING		CIRCLING NOT ALLOWED			

FT PER MIN	GS	DIST(TES)	ALT(HGT)
530	100	5DME	1810 (1803)
640	120	4DME	1490 (1483)
745	140	3DME	1170 (1163)
850	160	2DME	850 (843)
955	180	2DME	530 (523)

