

DOC 8168 ED.6 - 2014 AMDT 8

CHANGE: FAL L DISMISSED-BIDMA 1H, ERLIT 8H, GERBU 9H, MASEG 9H RENAMED-GEO ATS UPDATED

INITIAL CLIMB PROCEDURES & SIDS

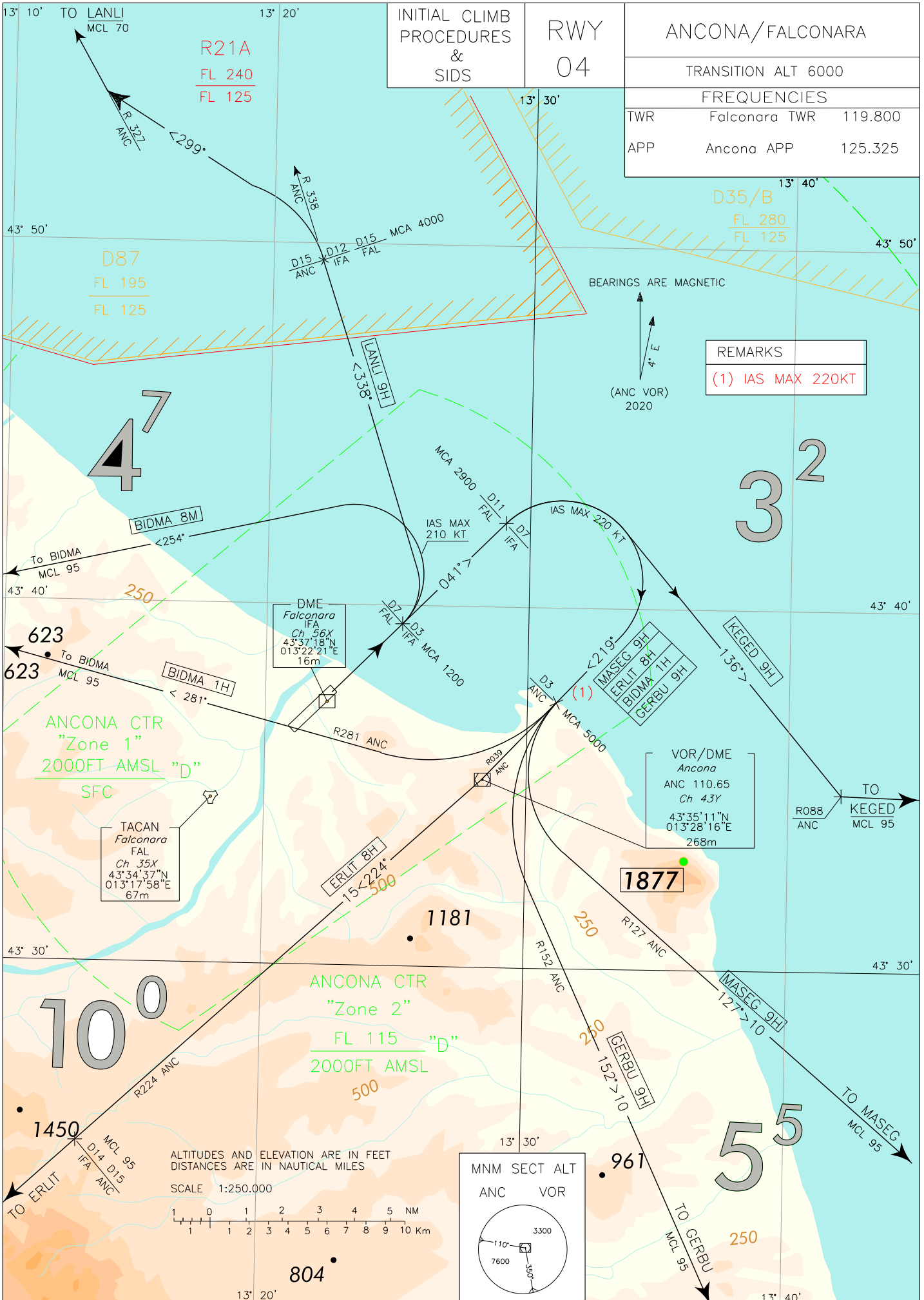
RWY 04

ANCONA/FALCONARA

TRANSITION ALT 6000

FREQUENCIES

TWR	Falconara TWR	119.800
APP	Ancona APP	125.325



INITIAL CLIMB PROCEDURE RWY 04

After take-off proceed on TR 041° until 3 NM IFA DME (or 7 NM FAL TACAN)

Remark: Minimum climb gradient: 425 ft/NM (7%).

MCA: TR 041°/3 NM IFA DME (or 7 NM FAL TACAN), 1200 FT.

SID DESCRIPTION**BIDMA 1H**

Proceed on TR 041° until 7 NM IFA DME (or 11 NM FAL TACAN), then turn right (IAS MAX 220 kt during turn) to join RDL 039 ANC VOR (TR 219°). At 3 NM ANC DME turn right (IAS MAX 220 kt during turn) to join and follow RDL 281 ANC VOR (TR 281°) bound to BIDMA.

Remark: Minimum climb gradient: 425 ft/NM (7%) until leaving 5000 ft.

MCA/MCL: TR 041°/7 NM IFA DME (or 11 NM FAL TACAN), 2900 FT;
RDL 039 ANC VOR/3 NM ANC DME (or INT RDL 039 ANC VOR), 5000 FT; BIDMA, FL 95.

BIDMA 8M

Turn left (IAS MAX 210 KT during turn) on track 254° bound to point BIDMA.

Remark: Minimum climb gradient: 425 ft/NM (7%) until leaving FL 95.

MCL: BIDMA, FL 95.

ERLIT 8H

Proceed on TR 041° until 7 NM IFA DME (or 11 NM FAL TACAN), then turn right (IAS MAX 220 kt during turn) until joining RDL 039 ANC VOR (TR 219°) bound to ANC VOR, to be left on RDL 224 bound to ERLIT.

Remark: Minimum climb gradient: 425 ft/NM (7%) until leaving 5000 ft.

MCA/MCL: TR 041°/7 NM IFA DME (or 11 NM FAL TACAN), 2900 FT;
RDL 039/3 NM ANC VOR/DME, 5000 FT;
RDL 224/15 NM ANC VOR/DME (or 14 NM IFA DME), FL 95.

GERBU 9H

Proceed on TR 041° until 7 NM IFA DME (or 11 NM FAL TACAN), then turn right (IAS MAX 220 KT during turn) to join RDL 039 ANC VOR (TR 219°). At 3 NM ANC DME turn left (IAS MAX 220 KT during turn) to join RDL 152 (TR 152°) ANC VOR bound to GERBU.

Remark: Minimum climb gradient: 425 ft/NM (7%) until leaving 5000 ft.

MCA/MCL: TR 041°/7 NM IFA DME (or 11 NM FAL TACAN), 2900 FT;
RDL 039/3NM ANC VOR/DME, 5000 FT; GERBU, FL 95.

KEGED 9H

Proceed on TR 041° until 7 NM IFA DME (or 11 NM FAL TACAN), then turn right (IAS MAX 220 kt during turn) on TR 136° until joining 088 ANC VOR bound to KEGED.

Remark: Minimum climb gradient: 425 ft/NM (7%) until leaving 5000 ft.

MCA/MCL: TR 041°/7 NM IFA DME (or 11 NM FAL TACAN), 2900 FT; KEGED, FL 95.

LANLI 9H

Turn left until joining RDL 338 ANC VOR. At 15 NM ANC DME turn left on TR 299° until joining RDL 327 ANC VOR bound to LANLI.

Remark: Minimum climb gradient: 425 ft/NM (7%) until leaving 4000 ft.

MCA/MCL: RDL 338/15 NM ANC VOR/DME (or 12 NM IFA DME or 15 NM FAL TACAN), 4000 FT; LANLI, FL 70.

MASEG 9H

Proceed on TR 041° until 7 NM IFA DME (or 11 NM FAL TACAN), then turn right (IAS MAX 220 kt during turn) to join RDL 039 ANC VOR (TR 219°). At 3.0 NM ANC DME turn left (IAS MAX 220 kt) to join RDL 127 (TR 127°) ANC VOR bound to MASEG.

Remark: Minimum climb gradient: 425 ft/NM (7%) until leaving 5000 ft.

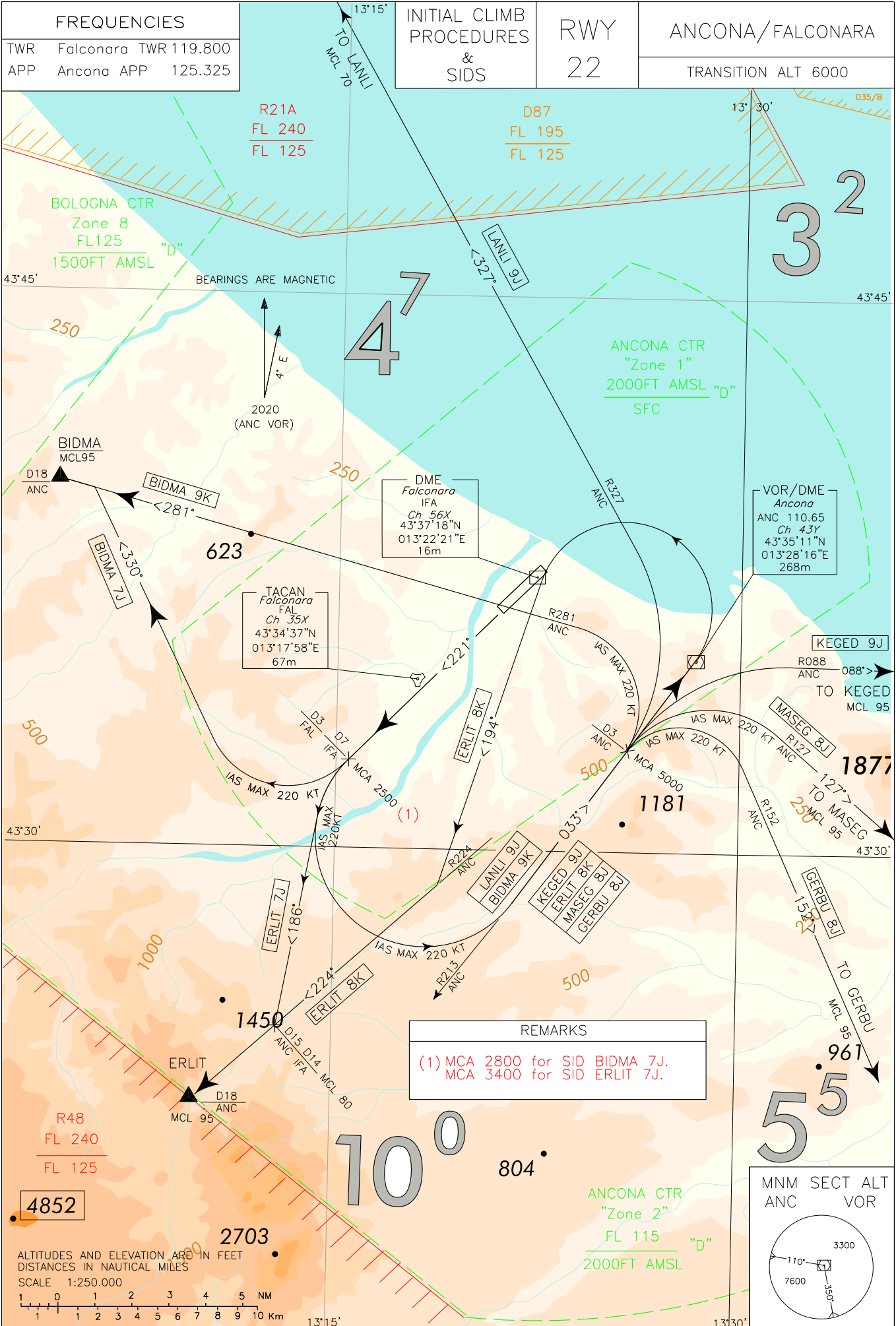
MCA/MCL: TR 041°/7 NM IFA DME (or 11 NM FAL TACAN), 2900 FT;
RDL 039 ANC VOR/3.0 NM ANC DME (or INT RDL 039 ANC VOR), 5000 FT; MASEG, FL 95.

Intenzionalmente bianca

Intentionally left blank

DOC 8168 ED.6 - 2014 AMDT 8

CHANGE: FAL L DISMISSED-BIDMA 9K, ERLIT 8K, GERBU 8J, MASEG 8J, KEGED 9J, LANLI 9J RENAMED



INITIAL CLIMB PROCEDURE RWY 22

After take-off proceed on TR 221° until 7 NM IFA DME (or 3.0 NM FAL TACAN).

MCA: INT TR 221°/7 NM IFA DME (or 3.0 NM FAL TACAN), 2500 FT for
SID LANLI 9J, KEGED 9J, MASEG 8J, ERLIT 8K, GERBU 8J and BIDMA 9K;
MCA: INT TR 221°/7 NM IFA DME (or 3.0 NM FAL TACAN), 2800 FT for SID BIDMA 7J;
MCA: INT TR 221°/7 NM IFA DME (or 3.0 NM FAL TACAN), 3400 FT for SID ERLIT 7J.

SID DESCRIPTION**BIDMA 7J**

Turn right (IAS MAX 220 kt during turn) on TR 330° until joining RDL 281 ANC VOR (TR 281°) bound to BIDMA.

REMARK:

Minimum climb gradient 500 ft/NM (8.2%) until leaving FL 95.

Pilots not able to comply with the required climb gradient shall be cleared on SID BIDMA 9K.

MCL: BIDMA, FL 95.

BIDMA 9K

Turn left (IAS MAX 220 kt during turn) to join and follow RDL 213 ANC VOR (TR 033°).

At 3 NM ANC DME turn left (IAS MAX 220 KT during turn) to join and follow RDL 281 ANC VOR (TR 281°) bound to BIDMA.

REMARK:

Minimum climb gradient 425 ft/NM (7%) until leaving TRL.

MCA/MCL: RDL 213/3 NM ANC VOR/DME, 5000 FT; BIDMA, FL 95.

ERLIT 7J

Turn left (IAS MAX 220 kt during turn) on TR 186° until joining RDL 224 ANC VOR (TR 224°) bound to ERLIT.

REMARK:

Minimum climb gradient 608 ft/NM (10%) until leaving FL 95.

Pilots not able to comply with the required climb gradient shall be cleared via SID ERLIT 8K.

MCL: RDL 224/15 NM ANC VOR/DME (or 14 NM IFA DME), FL 80; ERLIT, FL 95.

ERLIT 8K

Turn left (IAS MAX 220 kt during turn) until joining RDL 213 ANC VOR (TR 033°) bound to ANC VOR,
then turn left on TR 194° until joining RDL 224 ANC VOR (TR 224°) bound to ERLIT.

REMARK:

Minimum climb gradient 425 ft/NM (7%) until leaving TRL.

MCA/MCL: RDL 213/3NM ANC VOR/DME, 5000 FT;
RDL 224/15 NM ANC VOR/DME (or 14.0 NM IFA DME), FL 80; ERLIT, FL 95.

GERBU 8J

Turn left (IAS MAX 220 kt during turn) to join and follow RDL 213 ANC VOR (TR 213°).

At 3 NM ANC DME turn right (IAS MAX 220 KT during turn) to join and follow RDL 152 ANC VOR (TR 152°)
bound to GERBU.

REMARK:

Minimum climb gradient 425 ft/NM (7%) until leaving TRL.

MCA/MCL: RDL 213/3NM ANC VOR/DME, 5000 FT; GERBU, FL 95.

KEGED 9J

Turn left (IAS MAX 220 Kt during turn) to join and follow RDL 213 ANC VOR (TR 033°).

At 3 NM ANC DME turn right to join and follow RDL 088 ANC VOR (TR 088°) bound to KEGED.

REMARK:

Minimum climb gradient 425 ft/NM (7%) until leaving TRL.

MCA/MCL: RDL 213/3NM ANC VOR/DME, 5000 FT; KEGED, FL 95.

LANLI 9J

Turn left (IAS MAX 220 kt during turn) to join and follow RDL 213 ANC VOR (TR 033°).

At 3 NM ANC DME turn left to join and follow RDL 327 ANC VOR (TR 327°) bound to LANLI.

REMARK:

Minimum climb gradient 425 ft/NM (7%) until leaving TRL.

MCA/MCL: RDL 213/3NM ANC VOR/DME, 5000 FT; LANLI, FL 70

MASEG 8J

Turn left (IAS MAX 220 kt during turn) to join and follow RDL 213 ANC VOR (TR 033°). At 3 NM ANC DME turn right (IAS MAX 220 kt during turn) to join and follow RDL 127 ANC VOR (TR 127°) bound to MASEG.

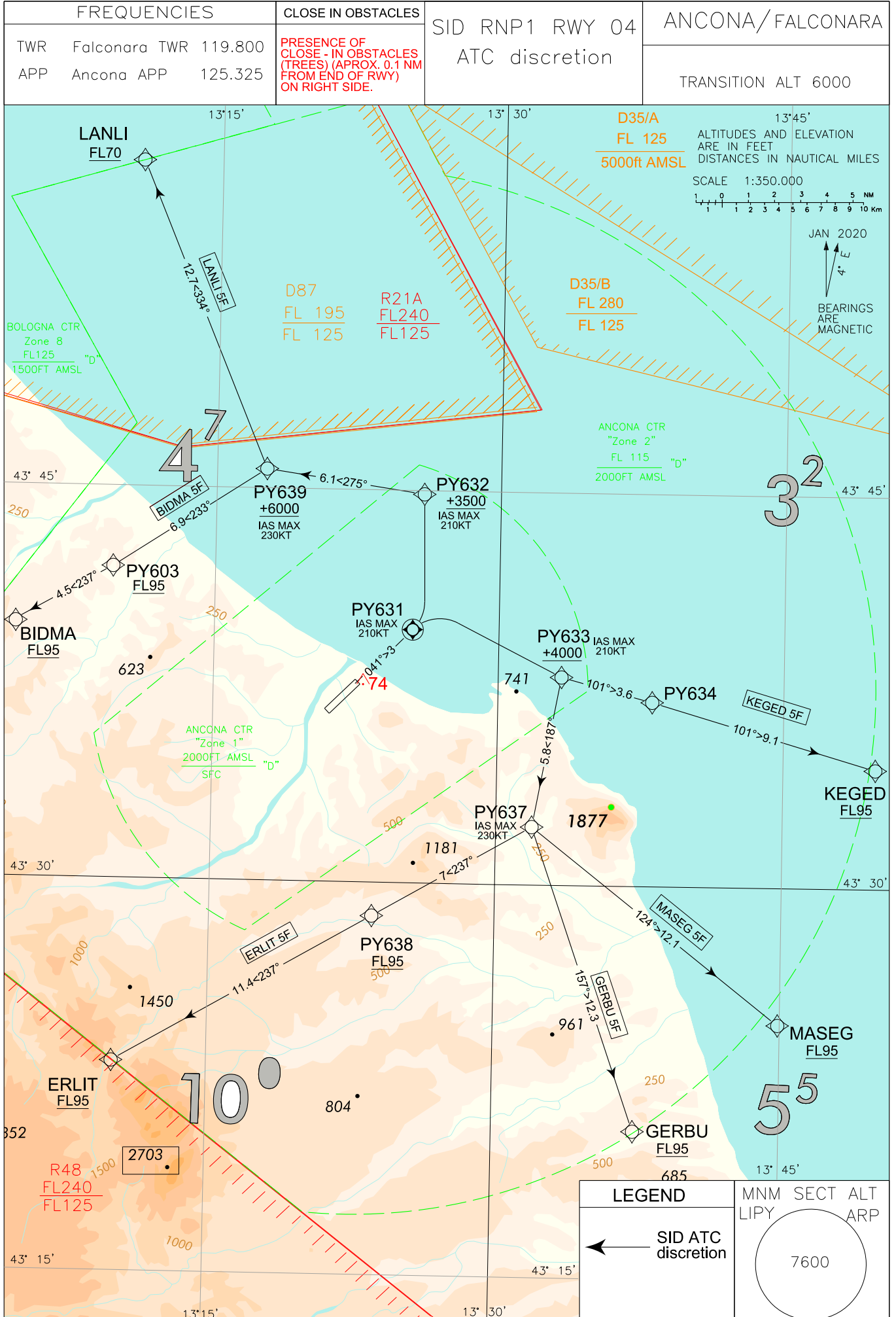
REMARK:

Minimum climb gradient 425 ft/NM (7%) until leaving TRL.

MCA/MCL: RDL 213/3 NM ANC VOR/DME, 5000 FT; MASEG, FL 95.

DOC 8168 ED.7 - 2020

CHANGE: GEO ATS UPDATED - RENUMBERED CHART



Ancona / Falconara

SID RNP1 RWY 04 ATC DISCRETION

REMARK

- 1) There are Close-in obstacles penetrating OIS 2.5%

BIDMA 5F (ATC DISCRETION)

Minimum Climb Gradient: 7% (425 FT/NM)

Path Terminator	Waypoint Identifier	Fly Over	Course °M (°T)	Magnetic Variation	Distance (NM)	Turn Direction	Altitude (ft)	Speed Limit (kt)	Navigation Specification
CA	-	-	041 (044.9)	+3.6	-	-	+429	-210	RNP1
CF	PY631	Y	041 (044.9)	+3.6	-	L	-	-210	RNP1
DF	PY632	-	-	-	-	L	+3500	-210	RNP1
TF	PY639	-	275 (278.2)	-	6.1	-	+6000	-230	RNP1
TF	PY603	-	233 (236.8)	-	6.9	-	+FL 95	-	RNP1
TF	BIDMA	-	237 (240.3)	-	4.5	-	+FL 95	-	RNP1

ERLIT 5F (ATC DISCRETION)

Minimum Climb Gradient: 7% (425 FT/NM)

Path Terminator	Waypoint Identifier	Fly Over	Course °M (°T)	Magnetic Variation	Distance (NM)	Turn Direction	Altitude (ft)	Speed Limit (kt)	Navigation Specification
CA	-	-	041 (044.9)	+3.6	-	-	+429	-210	RNP1
CF	PY631	Y	041 (044.9)	+3.6	-	R	-	-210	RNP1
DF	PY633	-	-	-	-	R	+4000	-210	RNP1
TF	PY637	-	187 (190.3)	-	5.8	-	-	-230	RNP1
TF	PY638	-	237 (240.1)	-	7.0	-	+FL 95	-	RNP1
TF	ERLIT	-	237 (240.1)	-	11.4	-	+FL 95	-	RNP1

GERBU 5F (ATC DISCRETION)

Minimum Climb Gradient: 7% (425 FT/NM)

Path Terminator	Waypoint Identifier	Fly Over	Course °M (°T)	Magnetic Variation	Distance (NM)	Turn Direction	Altitude (ft)	Speed Limit (kt)	Navigation Specification
CA	-	-	041 (044.9)	+3.6	-	-	+429	-210	RNP1
CF	PY631	Y	041 (044.9)	+3.6	-	R	-	-210	RNP1
DF	PY633	-	-	-	-	R	+4000	-210	RNP1
TF	PY637	-	187 (190.3)	-	5.8	-	-	-230	RNP1
TF	GERBU	-	157 (160.8)	-	12.3	-	+FL 95	-	RNP1

KEGED 5F (ATC DISCRETION)

Minimum Climb Gradient: 7% (425 FT/NM)

Path Terminator	Waypoint Identifier	Fly Over	Course °M (°T)	Magnetic Variation	Distance (NM)	Turn Direction	Altitude (ft)	Speed Limit (kt)	Navigation Specification
CA	-	-	041 (044.9)	+3.6	-	-	+429	-210	RNP1
CF	PY631	Y	041 (044.9)	+3.6	-	R	-	-210	RNP1
DF	PY633	-	-	-	-	-	+4000	-210	RNP1
TF	PY634	-	101 (104.6)	-	3.6	-	-	-	RNP1
TF	KEGED	-	101 (104.6)	-	9.1	-	+FL 95	-	RNP1

LANLI 5F (ATC DISCRETION)

Minimum Climb Gradient: 7% (425 FT/NM)

Path Terminator	Waypoint Identifier	Fly Over	Course °M (°T)	Magnetic Variation	Distance (NM)	Turn Direction	Altitude (ft)	Speed Limit (kt)	Navigation Specification
CA	-	-	041 (044.9)	+3.6	-	-	+429	-210	RNP1
CF	PY631	Y	041 (044.9)	+3.6	-	L	-	-210	RNP1
DF	PY632	-	-	-	-	L	+3500	-210	RNP1
TF	PY639	-	275 (278.2)	-	6.1	-	+6000	-230	RNP1
TF	LANLI	-	334 (337.3)	-	12.7	-	+FL 70	-	RNP1

MASEG 5F (ATC DISCRETION)

Minimum Climb Gradient: 7% (425 FT/NM)

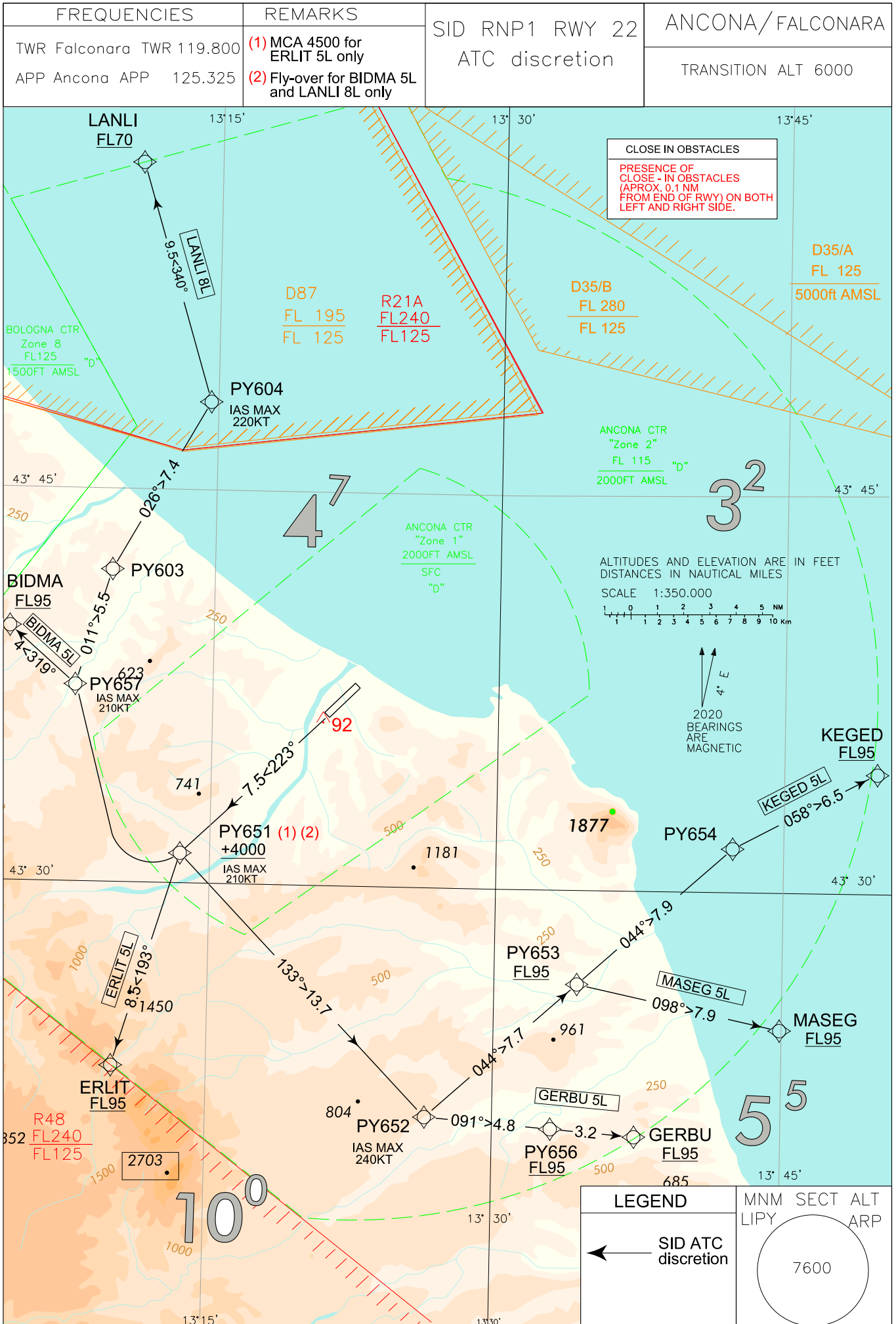
Path Terminator	Waypoint Identifier	Fly Over	Course °M (°T)	Magnetic Variation	Distance (NM)	Turn Direction	Altitude (ft)	Speed Limit (kt)	Navigation Specification
CA	-	-	041 (044.9)	+3.6	-	-	+429	-210	RNP1
CF	PY631	Y	041 (044.9)	+3.6	-	R	-	-210	RNP1
DF	PY633	-	-	-	-	R	+4000	-210	RNP1
TF	PY637	-	187 (190.3)	-	5.8	-	-	-230	RNP1
TF	MASEG	-	124 (128.0)	-	12.1	-	+FL 95	-	RNP1

WAYPOINT LIST

Waypoint Identifier	Coordinates
PY603	43° 41' 55.29"N 013° 09' 36.53" E
PY631	43° 39' 41.07"N 013° 25' 27.05" E
PY632	43° 44' 51.84"N 013° 25' 57.09" E
PY633	43° 37' 57.51"N 013° 33' 19.80" E
PY634	43° 37' 02.95"N 013° 38' 07.55" E
PY637	43° 32' 13.28"N 013° 31' 53.58" E
PY638	43° 28' 43.63"N 013° 23' 33.47" E
PY639	43° 45' 43.87"N 013° 17' 37.23" E

DOC 8168 ED.7 - 2020

CHANGE: GEO ATYS UPDATED - RENUMBERED CHART



Ancona / Falconara
SID RNP1 RWY 22 ATC DISCRETION

REMARK

- 1) There are Close-in obstacles penetrating OIS 2.5%

BIDMA 5L (ATC DISCRETION)

Minimum Climb Gradient: 8.7% (530 FT/NM) until PY657 then 5% (304 FT/NM) until reaching FL 95

Path Terminator	Waypoint Identifier	Fly Over	Course °M (°T)	Magnetic Variation	Distance (NM)	Turn Direction	Altitude (ft)	Speed Limit (kt)	Navigation Specification
CA	-	-	223 (226.1)	+3.6	-	-	+450	-210	RNP1
CF	PY651	Y	223 (226.1)	+3.6	-	-	+4000	-210	RNP1
DF	PY657	-	-	-	-	R	-	-210	RNP1
TF	BIDMA	-	319 (322.1)	-	4.0	-	+FL 95	-	RNP1

ERLIT 5L (ATC DISCRETION)

Minimum Climb Gradient: 9.7% (590 FT/NM) until reaching FL 95

Path Terminator	Waypoint Identifier	Fly Over	Course °M (°T)	Magnetic Variation	Distance (NM)	Turn Direction	Altitude (ft)	Speed Limit (kt)	Navigation Specification
CA	-	-	223 (226.1)	+3.6	-	-	+450	-210	RNP1
CF	PY651	-	223 (226.1)	+3.6	-	-	+4500	-210	RNP1
TF	ERLIT	-	193 (197.0)	-	8.5	-	+FL 95	-	RNP1

GERBU 5L (ATC DISCRETION)

Minimum Climb Gradient: 8.9% (541 FT/NM) until PY651 then 5% (304 FT/NM) until reaching FL95

Path Terminator	Waypoint Identifier	Fly Over	Course °M (°T)	Magnetic Variation	Distance (NM)	Turn Direction	Altitude (ft)	Speed Limit (kt)	Navigation Specification
CA	-	-	223 (226.1)	+3.6	-	-	+450	-210	RNP1
CF	PY651	-	223 (226.1)	+3.6	-	-	+4000	-210	RNP1
TF	PY652	-	133 (136.1)	-	13.7	L	-	-240	RNP1
TF	PY656	-	091 (094.4)	-	4.8	-	+FL 95	-	RNP1
TF	GERBU	-	091 (094.4)	-	3.2	-	+FL 95	-	RNP1

KEGED 5L (ATC DISCRETION)

Minimum Climb Gradient: 8.9% (541 FT/NM) until PY651 then 5% (304 FT/NM) until reaching FL95

Path Terminator	Waypoint Identifier	Fly Over	Course °M (°T)	Magnetic Variation	Distance (NM)	Turn Direction	Altitude (ft)	Speed Limit (kt)	Navigation Specification
CA	-	-	223 (226.1)	+3.6	-	-	+450	-210	RNP1
CF	PY651	-	223 (226.1)	+3.6	-	-	+4000	-210	RNP1
TF	PY652	-	133 (136.1)	-	13.7	L	-	-240	RNP1
TF	PY653	-	044 (048.0)	-	7.7	L	+FL95	-	RNP1
TF	PY654	-	044 (048.0)	-	7.9	-	-	-	RNP1
TF	KEGED	-	058 (061.9)	-	6.5	-	+FL 95	-	RNP1

LANLI 8L (ATC DISCRETION)

Minimum Climb Gradient: 8.7% (530 FT/NM) until PY651

Path Terminator	Waypoint Identifier	Fly Over	Course °M (°T)	Magnetic Variation	Distance (NM)	Turn Direction	Altitude (ft)	Speed Limit (kt)	Navigation Specification
CA	-	-	223 (226.1)	+3.6	-	-	+450	-210	RNP1
CF	PY651	Y	223 (226.1)	+3.6	-	-	+4000	-210	RNP1
DF	PY657	-	-	-	-	R	-	-210	RNP1
TF	PY603	-	011 (014.7)	-	5.5	-	-	-210	RNP1
TF	PY604	-	026 (029.4)	-	7.4	-	-	-220	RNP1
TF	LANLI	-	340 (343.2)	-	9.5	-	+FL 70	-	RNP1

MASEG 5L (ATC DISCRETION)

Minimum Climb Gradient: 8.9% (541 FT/NM) until PY651 then 5% (304 FT/NM) until reaching FL95

Path Terminator	Waypoint Identifier	Fly Over	Course °M (°T)	Magnetic Variation	Distance (NM)	Turn Direction	Altitude (ft)	Speed Limit (kt)	Navigation Specification
CA	-	-	223 (226.1)	+3.6	-	-	+450	-210	RNP1
CF	PY651	-	223 (226.1)	+3.6	-	-	+4000	-210	RNP1
TF	PY652	-	133 (136.1)	-	13.7	L	-	-240	RNP1
TF	PY653	-	044 (048.0)	-	7.7	L	+FL 95	-	RNP1
TF	MASEG	-	098 (102.0)	-	7.9	-	+FL 95	-	RNP1

WAYPOINT LIST

Waypoint Identifier	Coordinates
PY603	43°41'55.29" N 013°09'36.53" E
PY604	43°48'21.28" N 013°14'36.76" E
PY651	43° 31' 09.10"N 013° 13' 26.44" E
PY652	43° 21' 16.30"N 013° 26' 28.42" E
PY653	43° 26' 25.58"N 013° 34' 20.27" E
PY654	43° 31' 40.43"N 013° 42' 22.87" E
PY656	43°20'53.84" N 013°33'01.95" E
PY657	43°36'33.53" N 013°07'39.89" E