
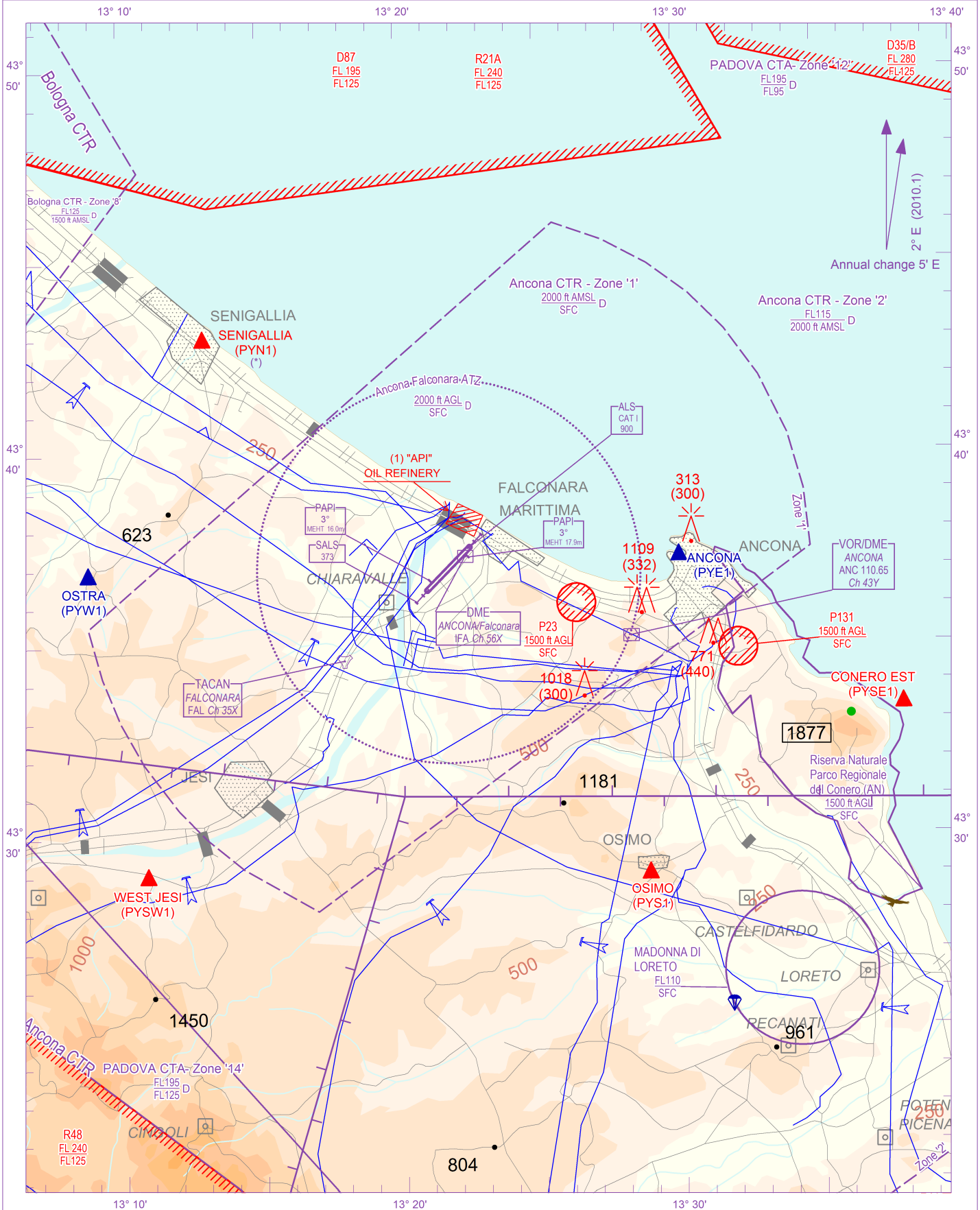


ICAO - VISUAL APPROACH CHART

AD 2 LIPY 5-1

SCALE 1:250.000 	FIS Padova Information APP Ancona APP TWR Falconara TWR	126.425 (124.150) 125.325 119.800	AD ELEV 50	L I P Y	ANCONA/FALCONARA
------------------------------------------------------------------------------------------------------	---------------------------------------------------------------	-----------------------------------------	---------------	------------------	------------------



CHANGE: FAL L withdrawn and GEO ATS updated

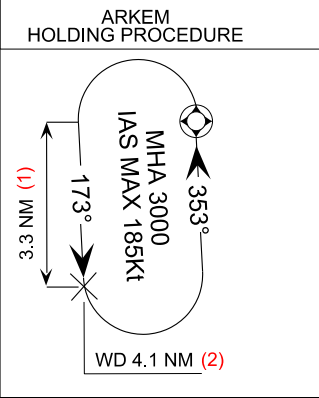
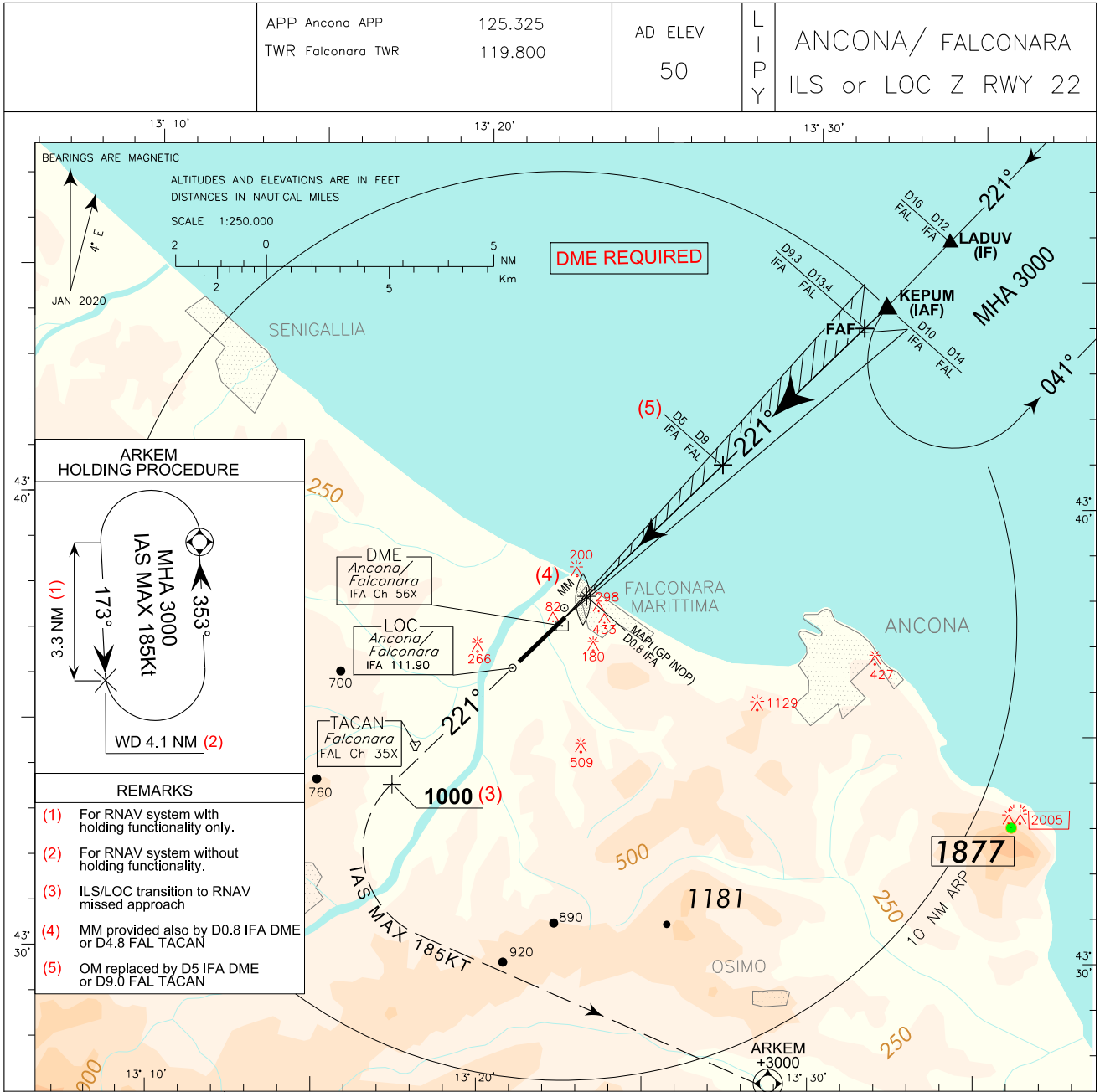
AIRSPACE CLASSIFICATION See AIP ENR 1.4 TRANSITION ALT 6000 FT ELEV AND ALT IN FT IF NOT OTHERWISE INDICATED	REMARK (*) Entry/Exit point for aeroplanes VFR/N operations also	WARNING (1) Do not overfly below 3000 ft (See AIP - AD 2 LIPY 8-1)
-------------------------------------------------------------------------------------------------------------------------------	---------------------------------------------------------------------	--------------------------------------------------------------------------

ICAO – INSTRUMENT APPROACH CHART

AD 2 LIPY 5-3

DOC 8168 ED.7 – 2020

CHANGE: RENAMED PROCEDURE – WARNING ADDED

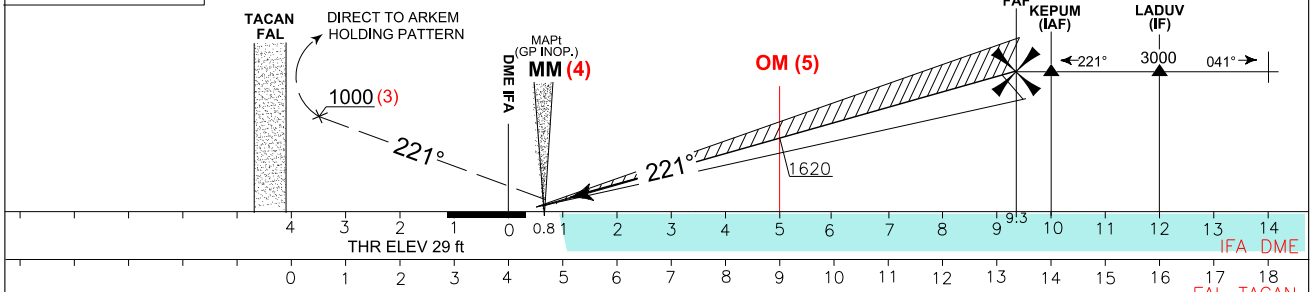


- REMARKS**
- (1) For RNAV system with holding functionality only.
 - (2) For RNAV system without holding functionality.
 - (3) ILS/LOC transition to RNAV missed approach
 - (4) MM provided also by D0.8 IFA DME or D4.8 FAL TACAN
 - (5) OM replaced by D5 IFA DME or D9.0 FAL TACAN

TRANSITION ALT 6000 MISSED APPROACH: Continue climbing to 3000 ft. Passing 1000 ft turn left (IAS MAX 185 kt) direct to ARKEM Holding pattern

ILS RDH 17.5 M
GP 3.0°

REMARK: Missed Approach obstacle clearance provided by 2.5% gradient, 5% gradient required to remain inside vertical limits of CTR Zone 2 (controlled airspace)



OCA (OCH)		A	B	C	D	WARNING: CIRCLING RWY04 (North-west of RWY only) must be performed avoiding API industrial plant	FT PER MIN	GS	D5 IFA-MM	MM-THR	DME IFA	ALT (HGT)	MNM SECT ALT LIPY ARP
STRAIGHT IN APPROACH	ILS	321 (292)	331 (302)	341 (312)	351 (322)		318	60	4 : 16	0 : 34	9	2891(2862)	
	LOC/DME	470 (441)				477	90	2 : 51	0 : 22	6	1937(1908)		
						636	120	2 : 08	0 : 17	5	1620(1591)		
						795	150	1 : 43	0 : 13	4	1301(1272)		
						954	180	1 : 25	0 : 11	3	983 (954)		
CIRCLING (see WARNING) NW of RWY only		750 (700)	1120 (1070)	1180 (1130)						2	665 (636)		

ILS or LOC Z RWY 22

TABULAR DESCRIPTION

ILS/LOC transition to RNAV Missed approach

Serial Number	Path Terminator	Waypoint Identifier	Fly Over	Course °M(°T)	Magnetic Variation	Distance (NM)	Turn Direction	Altitude (ft)	Speed Limit (kt)	VPA/TCH	Navigation Specification
010	CA	-	-	221 (224.9)	+4	-	-	+1000	-185	-	RNP 1
020	DF	ARKEM	Y	-	-	-	L	+3000	-185	-	RNP 1
030	HM	ARKEM	Y	353° (357.0°)	+4	-	L	+3000	-185	-	RNAV1

Path Terminator	Waypoint Identifier	Inbound Course °M (°T)	Leg Distance (NM) (1)	Timing(min.)/ Waypoint Distance (NM) (2)	Turn Direction	Minimum Altitude (FT)	Maximum Altitude (FL)	Speed Limit (kt)	Magnetic Variation (°)	Navigation Specification
HM	ARKEM	353° (357.0°)	3.3	- / 4.1	L	+3000	-	-185	+4	RNAV1

(1) RNAV system with holding functionality

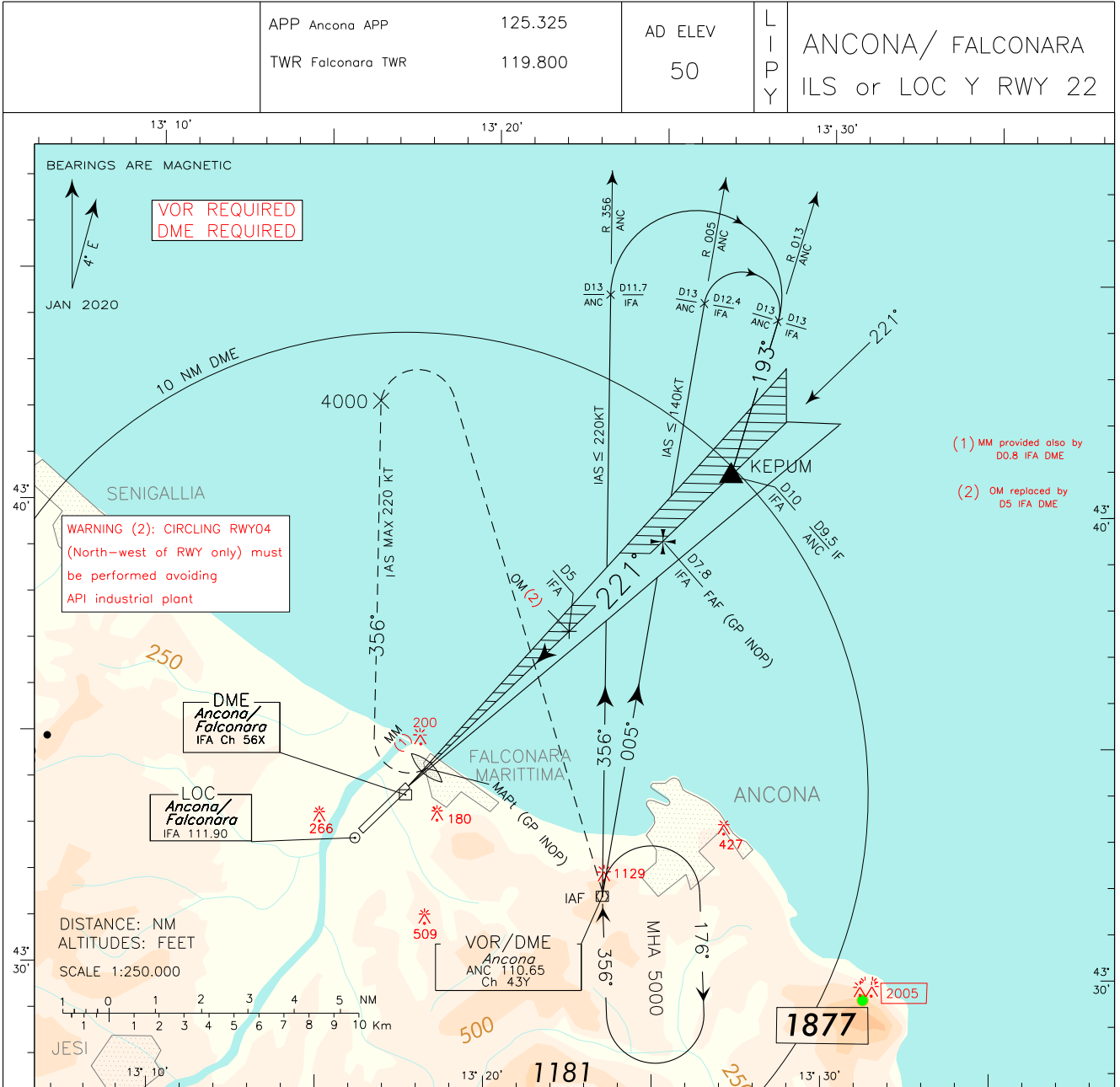
(2) RNAV system without holding functionality

FIX/POINT	Coordinates (WGS84)
IAF (KEPUM)	43°44'26.00"N 013°32'00.00"E
IF (LADUV)	43°45'51.00"N 013°33'57.00"E
FAP FAF (GP INOP)	43°44'01.02"N 013°31'25.04"E
OM (D5 IFA)	43°40'54.27"N 013°27'07.73"E
MAPT (GP INOP)	43°37'53.50"N 013°22'58.10"E

ICAO – INSTRUMENT APPROACH CHART

AD 2 LIPY 5–5

DOC 8168 ED.6–2014 AMDT 7

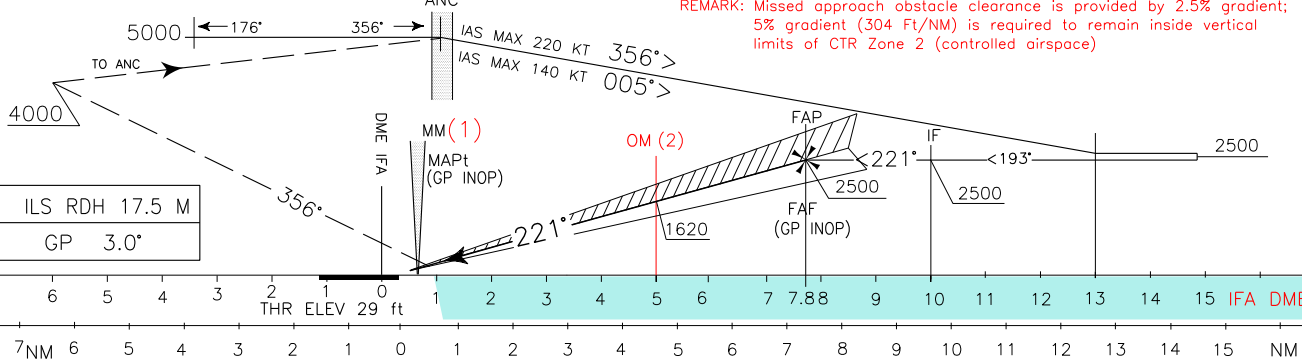


CHANGE: MISSED APPROACH UPDATED-FAL L DISMISSED-WARNING 2 ADDED

TRANSITION ALT 6000

MISSED APPROACH: Climbing to 5000 ft, continue RWY heading until passing 600 ft then turn right TR 356°. Reaching 4000 ft turn right to ANC VOR (IAS MAX 220KT) to be reached at 5000 ft.

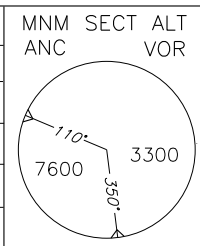
REMARK: Missed approach obstacle clearance is provided by 2.5% gradient; 5% gradient (304 Ft/NM) is required to remain inside vertical limits of CTR Zone 2 (controlled airspace)



OCA (OCH)		A	B	C	D
STRAIGHT IN APPROACH	ILS	321 (292)	331 (302)	341 (312)	351 (322)
	GP INOP	470 (441)			
CIRCLING (see WARNING 2) NW of RWY only		750 (700)	1120 (1070)	1180 (1130)	

WARNING (1): in order to avoid overflying of "API" industrial plant, perform missed approach turns 15 DEG bank angle.

FT PER MIN	GS	D5 IFA-MM	MM-THR	DME IFA	ALT (HGT)
318	60	4.27 NM	0.56 NM	6	1937 (1908)
477	90	2 : 51	0 : 22	5	1620 (1591)
636	120	2 : 08	0 : 17	4	1301 (1272)
795	150	1 : 43	0 : 13	3	983 (954)
954	180	1 : 25	0 : 11	2	665 (636)



FIX/POINT	Coordinates (WGS84)
IAF (ANC VOR/DME)	43°35'11.20"N 013°28'16.00"E
IF (KEPUM)	43°44'26.00"N 013°32'00.00"E
FAP FAF (GP INOP)	43°42'53.13"N 013°29'51.42"E
OM (D5 IFA)	43°40'54.27"N 013°27'07.73"E
MAPT (GP INOP)	43°37'53.50"N 013°22'58.10"E

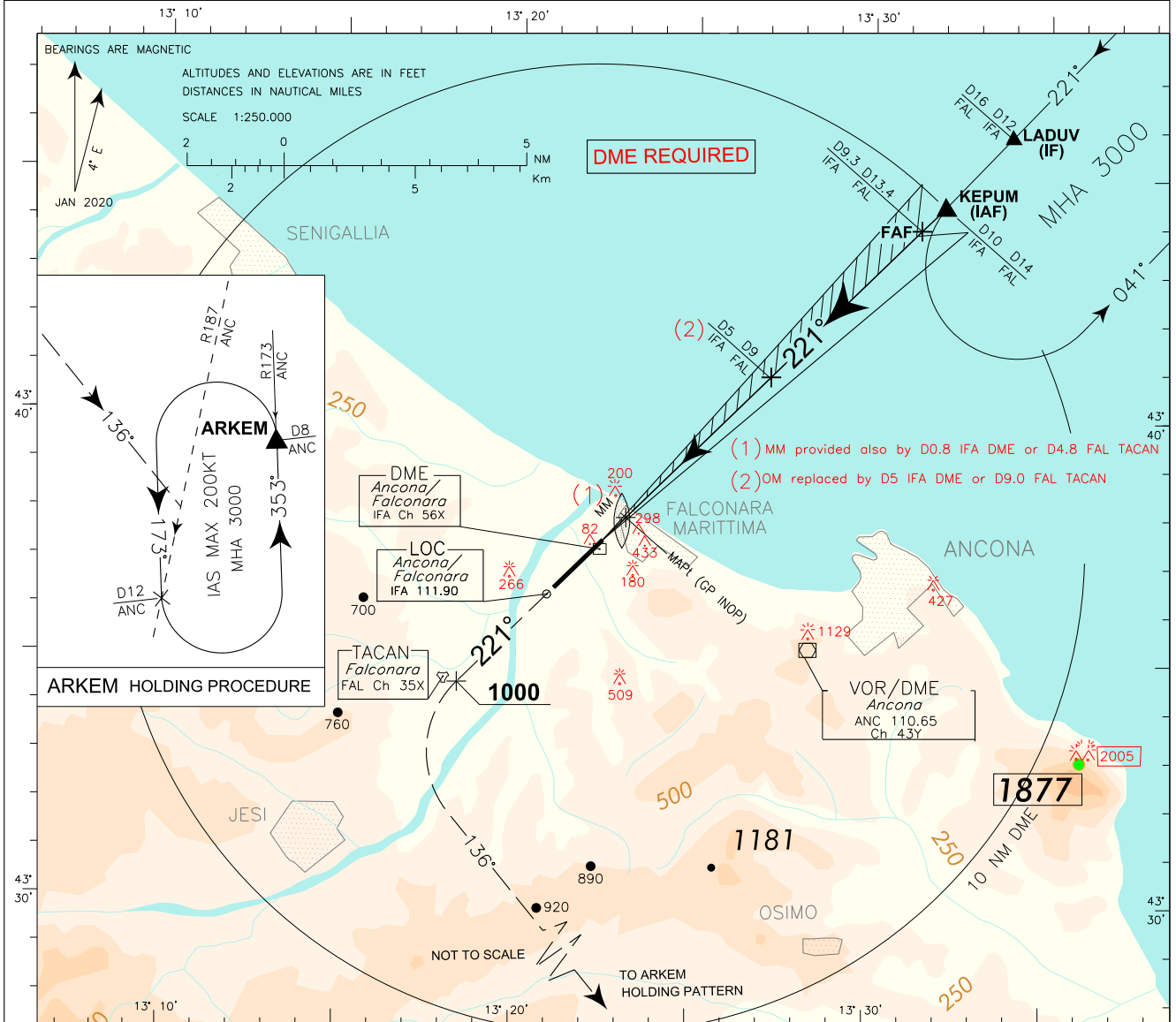
ICAO - INSTRUMENT APPROACH CHART

AD 2 LIPY 5-7

DOC 8168 ED.6-2014 AMDT 8

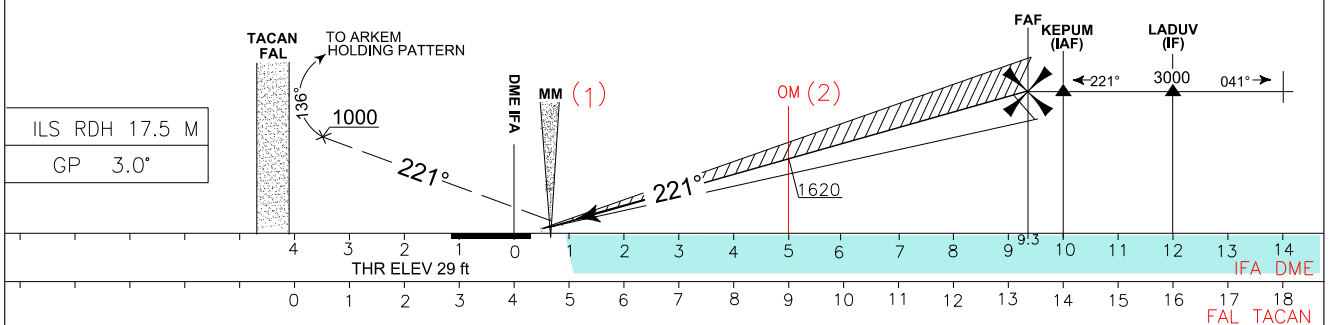
CHANGE: MSA UPDATED - FAL L DISMISSED - WARNING ADDED

APP Ancona APP TWR Falconara TWR	125.325 119.800	AD ELEV 50	LIPY	ANCONA/ FALCONARA ILS or LOC X RWY 22
-------------------------------------	--------------------	---------------	------	------------------------------------------



TRANSITION ALT 6000
 MISSED APPROACH: Continue climbing to 3000 ft. Passing 1000 ft turn left on TR 136° (IAS MAX 185 kt) until joining RDL 187 ANC VOR bound to ARKEM holding pattern. Hold on RDL 173 ANC VOR between 8 NM and 12 NM ANC DME, IAS MAX 200 kt (left turns).

- (1) MM provided also by D0.8 IFA DME or D4.8 FAL TACAN
- (2) OM replaced by D5 IFA DME or D9.0 FAL TACAN



STRAIGHT IN APPROACH	OCA (OCH)				WARNING: CIRCLING RWY04 (North-west of RWY only) must be performed avoiding API industrial plant	FT PER MIN	GS	DME IFA		DME THR	ALT (HGT)	MNM SECT ALT
	A	B	C	D				D5 IFA-MM	MM-THR			
ILS	321 (292)	331 (302)	341 (312)	351 (322)		318	60	4 : 16	0 : 34	9	2891(2862)	
LOC/DME	470 (441)					477	90	2 : 51	0 : 22	6	1937(1908)	
						636	120	2 : 08	0 : 17	4	1301(1272)	
						795	150	1 : 43	0 : 13	3	983 (954)	
						954	180	1 : 25	0 : 11	2	665 (636)	
CIRCLING (see WARNING) NW of RWY only	750 (700)		1120 (1070)		1180 (1130)							

FIX/POINT	Coordinates (WGS84)
IAF (KEPUM)	43°44'26.00"N 013°32'00.00"E
IF (LADUV)	43°45'51.00"N 013°33'57.00"E
FAP FAF (GP INOP)	43°44'01.02"N 013°31'25.04"E
OM (D5 IFA)	43°40'54.27"N 013°27'07.73"E
MAPT (GP INOP)	43°37'53.50"N 013°22'58.10"E

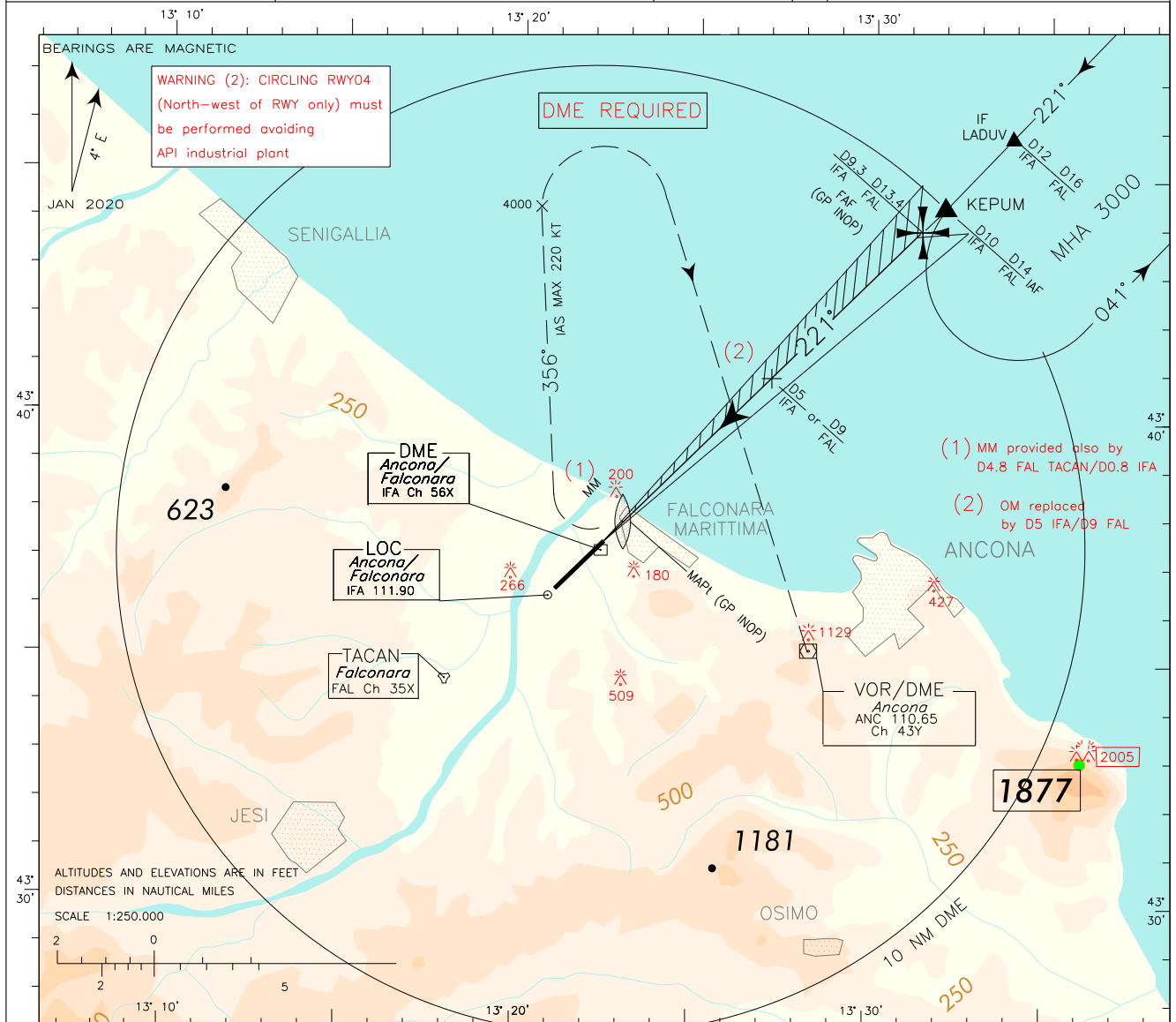
ICAO - INSTRUMENT APPROACH CHART

AD 2 LIPY 5-9

DOC 8168 ED.5-2014 AMDT 6

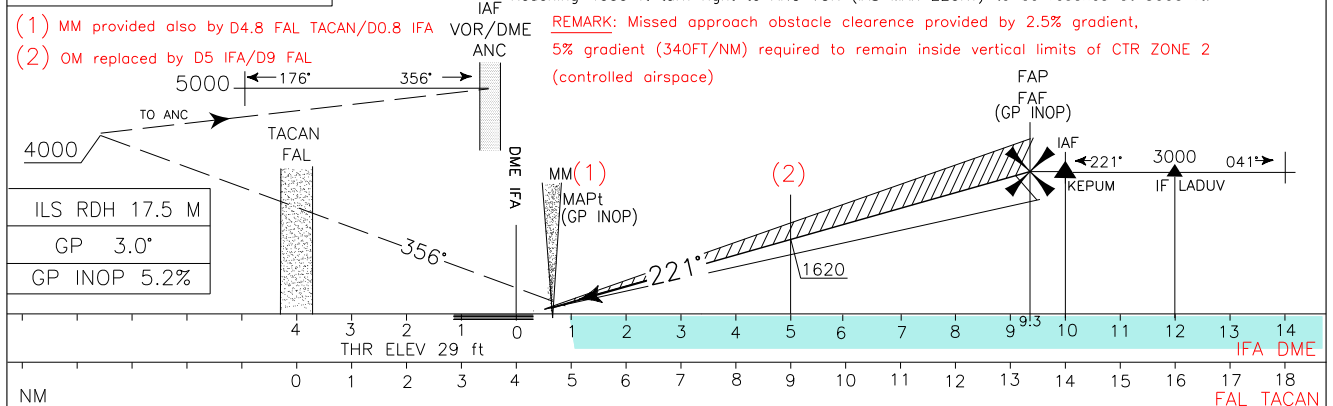
CHANGE: MISSED APPROACH and MSA UPDATED-FAL L DISMISSED-WARNING 2 ADDED

APP Ancona APP	125.325	AD ELEV	LIPY	ANCONA/ FALCONARA ILS or LOC W RWY 22
TWR Falconara TWR	119.800	50		

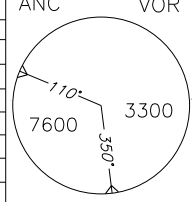


TRANSITION ALT 6000

MISSED APPROACH: Climbing to 5000 ft, continue RWY heading until passing 600 ft then turn right TR 356°. Reaching 4000 ft turn right to ANC VOR (IAS MAX 220KT) to be reached at 5000 ft.



OCA (OCH)	A	B	C	D	WARNING (1): in order to avoid overflying of "API" industrial plant, perform missed approach turns 15 DEG bank angle.	FT PER MIN	GS	DME IFA		MM-THR		ALT (HGT)		MNM AN	SECT VOR	ALT
								D5 IFA-MM	MM-THR	9	8	7	6			
						318	60	4.27 NM	0.56 NM	9	2891(2862)	8	2573(2544)			
						477	90	2 : 51	0 : 22	6	1937(1908)	5	1620(1591)			
						636	120	2 : 08	0 : 17	4	1301(1272)	3	983 (954)			
						795	150	1 : 43	0 : 13	2	665 (636)					
						954	180	1 : 25	0 : 11							

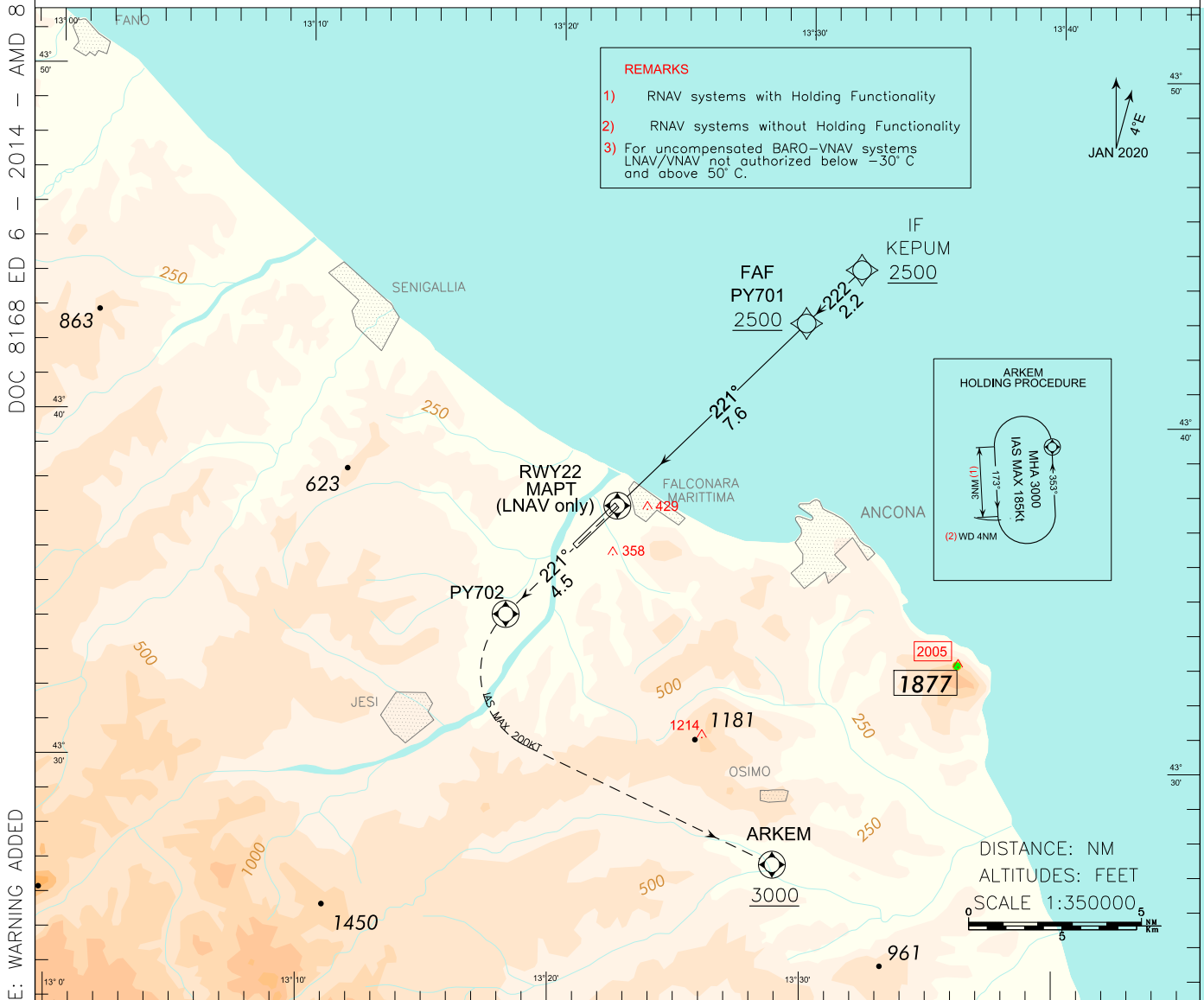


ENAV - Roma

AIRAC effective date 21 APR 2022 (A3/22)

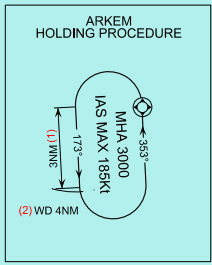
FIX/POINT	Coordinates (WGS84)
IAF (KEPUM)	43°44'26.00"N 013°32'00.00"E
IF (LADUV)	43°45'51.00"N 013°33'57.00"E
FAP FAF (GP INOP)	43°44'01.02"N 013°31'25.04"E
OM (D5 IFA)	43°40'54.27"N 013°27'07.73"E
MAPT (GP INOP)	43°37'53.50"N 013°22'58.10"E

EGNOS CH 92416 E22A	APP Ancona APP 125.325 TWR Falconara TWR 119.800	AD ELEV 50	LIPY	ANCONA/ FALCONARA RNP RWY 22
---------------------------	-----------------------------------------------------	---------------	------	---------------------------------



REMARKS

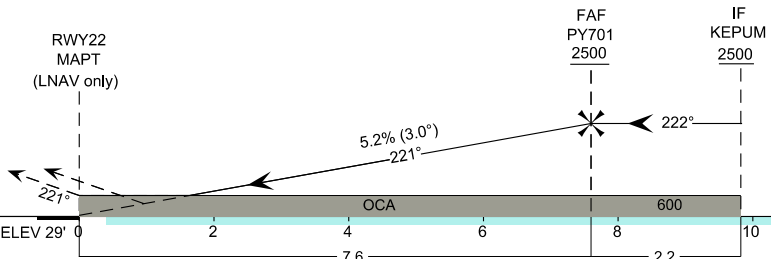
- 1) RNAV systems with Holding Functionality
- 2) RNAV systems without Holding Functionality
- 3) For uncompensated BARO-VNAV systems LNAV/VNAV not authorized below -30° C and above 50° C.

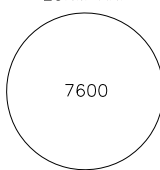


CHANGE: WARNING ADDED

TRANSITION ALT 6000 MISSED APPROACH: Climb to 3000 Ft. Continue to PY702 on course 221° then turn left (IAS MAX 200 Kt) direct to ARKEM at or above 3000 Ft to join holding pattern.

REMARK: Missed approach obstacle clearance is provided by 2.5% gradient; 5% gradient (304ft/NM) is required to remain inside vertical limits of CTR Zone 2 (Controlled Airspace)



OCA (OCH)		A	B	C	D	WARNING: CIRCLING RWY04 (North-west of RWY only) must be performed avoiding API industrial plant	FT per MIN	GS	DIST THR22	ALT (HGT)	MNM SECT ALT 25NM ARP 
STRAIGHT IN APPROACH	LPV	400 (371)	410 (381)	420 (391)	430 (401)		430	80	7.6	2500 (2471)	
	LNAV/VNAV	564 (535)	576 (547)	584 (555)	595 (566)		540	100	7.0	2310 (2281)	
	LNAV	640 (611)					650	120	6.0	1990 (1961)	
CIRCLING (see WARNING) only NW of Runway		790 (740)	790 (740)	1030 (980)	1110 (1060)		760	140	5.0	1670 (1641)	
							860	160	4.0	1350 (1321)	
						860	160	3.0	1030 (1001)		
						970	180	2.0	710 (681)		

TABULAR DESCRIPTION

RNP RWY 22 – Instrument Approach procedure

Serial Number	Path Terminator	Waypoint Identifier	Fly Over	Course °M(°T)	Magnetic Variation	Distance (NM)	Turn Direction	Altitude (ft)	Speed Limit (kt)	VPA/TCH	Navigation Specification
010	IF	KEPUM	-	-	-	4	-	+2500	-185	-	RNP APCH
020	TF	PY701	-	222° (225.2°)	-	2.2	-	+2500	-	-	RNP APCH
030	TF	RWY22	Y	221° (224.9°)	-	7.6	-	-	-	3°/15	RNP APCH
040	CF	PY702	Y	221° (224.9°)	+4	4.5	-	-	-200	-	RNP APCH
050	DF	ARKEM	Y	-	-	-	L	+3000	-200	-	RNP APCH
060	HM	ARKEM	Y	353° (357.0°)	+4	-	L	+3000	-185	-	RNAV1

Path Terminator	Waypoint Identifier	Inbound Course °M (°T)	Leg Distance (NM) (1)	Timing(min.)/ Waypoint Distance (NM) (2)	Turn Direction	Minimum Altitude (FT)	Maximum Altitude (FL)	Speed Limit (kt)	Magnetic Variation (°)	Navigation Specification
HM	ARKEM	353° (357.0°)	3.0	- / 4.0	L	+3000	-	-185	+4	RNAV1

(1) RNAV system with holding functionality

(2) RNAV system without holding functionality

WAYPOINT LIST

RNP RWY 22

Waypoint Identifier	Coordinates
PY701	43°42'52.17" N 013°29'49.98" E
PY702	43°34'18.05" N 013°18'03.94" E

SBAS FAS DATA BLOCK LIPY RNP RWY 22

Input data

Operation Type	0
SBAS Provider	1
Airport Identifier	LIPY
Runway	22
Runway Direction	0
Approach Performance Designator	0
Route Indicator	
Reference Path Data Selector	0
Reference Path Identifier	E22A
LTP/FTP Latitude	433729.3700N
LTP/FTP Longitude	0132226.1600E
LTP/FTP Ellipsoidal Height (metres)	51.0
FPAP Latitude	433624.8800N
Delta FPAP Latitude (seconds)	-64.4900
FPAP Longitude	0132057.7100E
Delta FPAP Longitude (seconds)	-88.4500
Threshold Crossing Height	15.0
TCH Units Selector	1
Glidepath Angle (degrees)	3.00
Course Width (metres)	105.00
Length Offset (metres)	0
HAL (metres)	40.0
VAL (metres)	35.0

Output data

Data Block	10 19 10 09 0C 16 00 00 01 32 32 05 34 C4 B8 12 E0 4D BD 05 FE 15 2C 08 FE FC 4C FD 2C 81 2C 01 64 00 C8 AF A2 A0 92 C6
Calculated CRC Value	A2A092C6

Required Additional Data

ICAO Code	LI
LTP/FTP Orthometric Height (metres)	8.8
FPAP Orthometric Height (metres)	14.8

EUROCONTROL FAS DB tool Version 3.1.0

Intenzionalmente bianca

Intentionally left blank