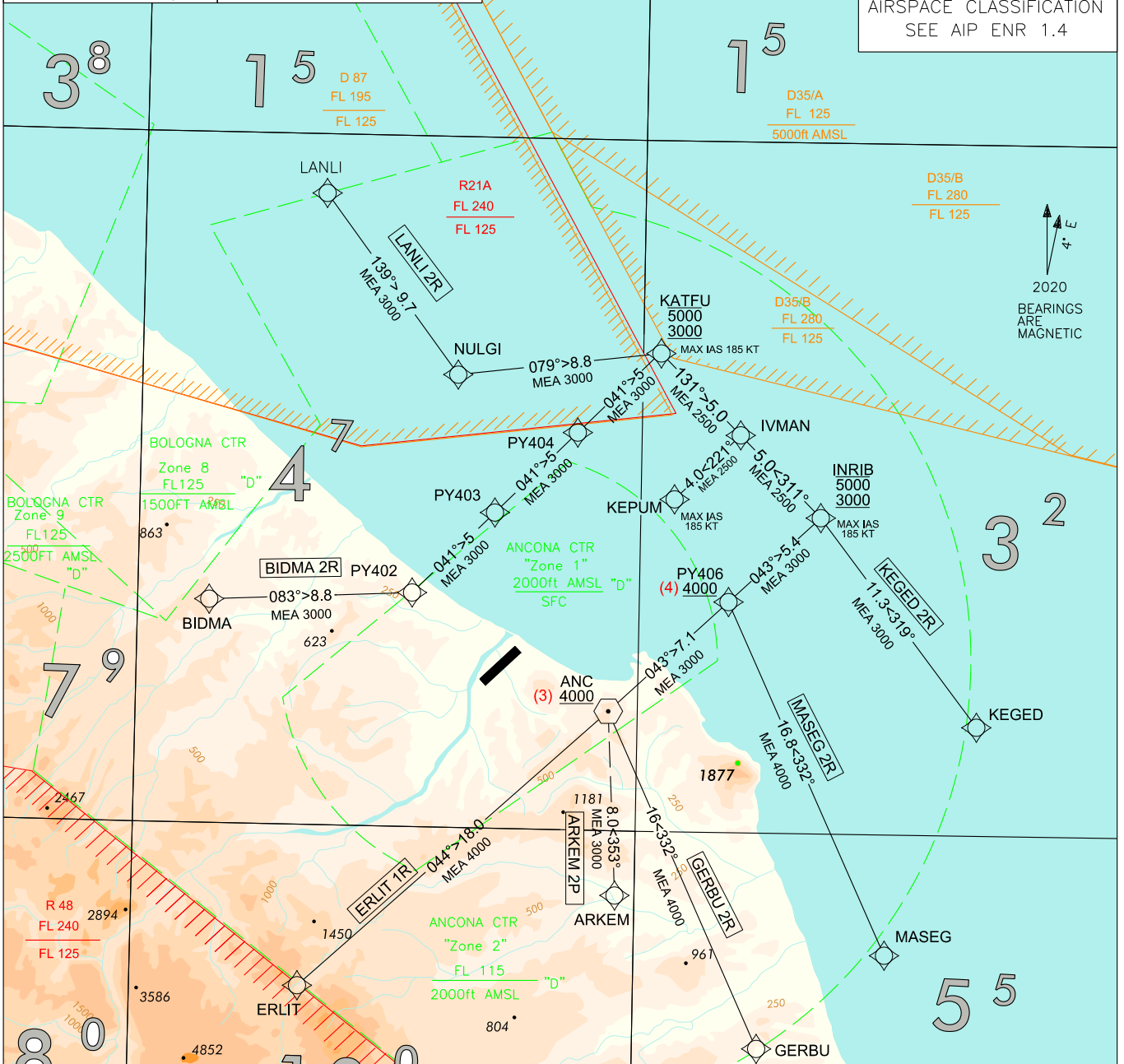


DOC 8168 ED.6 - 2014 AMDT 8

CHANGE: GEO ATS UPDATED

LEGEND		FREQUENCIES		STAR RNP1 RWY22	ANCONA/FALCONARA
STAR		APP Ancona APP	125.325		
ATC DISCRETION		TWR Falconara TWR	119.800	TRANSITION ALT 6000	
Not to scale				AIRSPACE CLASSIFICATION SEE AIP ENR 1.4	



ALTITUDES AND ELEVATIONS ARE IN FEET
DISTANCES IN NAUTICAL MILES
SCALE 1:500,000
0 4154
2 5 10 NM
2 5 10 15 3547 Km

- REMARKS**
- (1) For RNAV system with holding functionality only.
 - (2) For RNAV system without holding functionality.
 - (3) At or above 4000 ft only for GERBU 2R and ERLIT 1R.
 - (4) At or above 4000 ft only for MASEG 2R.

KEPUM HOLDING PROCEDURE	INRIB HOLDING PROCEDURE	KATFU HOLDING PROCEDURE
<p>MAX HOLDING ALT 4500FT</p>		
<p>ARKEM HOLDING PROCEDURE</p>		<p>MNM SECT ALT LIPY ARP</p>

ANCONA
STAR RNP1 RWY 22

ARKEM 2P (ATC Discretion)

Path Terminator	Waypoint Identifier	Fly Over	Course °M (°T)	Magnetic Variation	Distance (NM)	Turn Direction	Altitude (ft)	Speed Limit (kt)	Navigation Specification
IF	ARKEM	-	-	-	-	-	-	-	RNP 1
TF	ANC	-	353 (357.0)	-	8.0	-	-	-	RNP 1
TF	PY406	-	043 (046.7)	-	7.1	-	-	-	RNP 1
TF	INRIB	-	043 (046.8)	-	5.4	-	-5000 +3000	-185	RNP 1
TF	IVMAN	-	311 (315.1)	-	5.0	L	-	-185	RNP 1
TF	KEPUM	-	221 (225.0)	-	4.0	L	-	-185	RNP 1

BIDMA 2R

Path Terminator	Waypoint Identifier	Fly Over	Course °M (°T)	Magnetic Variation	Distance (NM)	Turn Direction	Altitude (ft)	Speed Limit (kt)	Navigation Specification
IF	BIDMA	-	-	-	-	-	-	-	RNP 1
TF	PY402	-	083 (086.9)	-	8.8	-	-	-	RNP 1
TF	PY403	-	041 (044.8)	-	5.0	-	-	-	RNP 1
TF	PY404	-	041 (044.9)	-	5.0	-	-	-	RNP 1
TF	KATFU	-	041 (044.9)	-	5.0	-	-5000 +3000	-185	RNP 1
TF	IVMAN	-	131 (134.9)	-	5.0	R	-	-185	RNP 1
TF	KEPUM	-	221 (225.0)	-	4.0	R	-	-185	RNP 1

ERLIT 1R

Path Terminator	Waypoint Identifier	Fly Over	Course °M (°T)	Magnetic Variation	Distance (NM)	Turn Direction	Altitude (ft)	Speed Limit (kt)	Navigation Specification
IF	ERLIT	-	-	-	-	-	-	-	RNP 1
TF	ANC	-	044 (047.6)	-	18.0	-	+4000	-	RNP 1
TF	PY406	-	043 (046.7)	-	7.1	-	-	-	RNP 1
TF	INRIB	-	043 (046.8)	-	5.4	-	-5000 +3000	-185	RNP 1
TF	IVMAN	-	311 (315.1)	-	5.0	L	-	-185	RNP 1
TF	KEPUM	-	221 (225.0)	-	4.0	L	-	-185	RNP 1

GERBU 2R

Path Terminator	Waypoint Identifier	Fly Over	Course °M (°T)	Magnetic Variation	Distance (NM)	Turn Direction	Altitude (ft)	Speed Limit (kt)	Navigation Specification
IF	GERBU	-	-	-	-	-	-	-	RNP 1
TF	ANC	-	332 (335.4)	-	16.0	-	+4000	-	RNP 1
TF	PY406	-	043 (046.7)	-	7.1	-	-	-	RNP 1
TF	INRIB	-	043 (046.8)	-	5.4	-	-5000 +3000	-185	RNP 1
TF	IVMAN	-	311 (315.1)	-	5.0	L	-	-185	RNP 1
TF	KEPUM	-	221 (225.0)	-	4.0	L	-	-185	RNP 1

KEGED 2R

Path Terminator	Waypoint Identifier	Fly Over	Course °M (°T)	Magnetic Variation	Distance (NM)	Turn Direction	Altitude (ft)	Speed Limit (kt)	Navigation Specification
IF	KEGED	-	-	-	-	-	-	-	RNP 1
TF	INRIB	-	319 (322.6)	-	11.3	-	-5000 +3000	-185	RNP 1
TF	IVMAN	-	311 (315.1)	-	5.0	-	-	-185	RNP 1
TF	KEPUM	-	221 (225.0)	-	4.0	L	-	-185	RNP 1

LANLI 2R

Path Terminator	Waypoint Identifier	Fly Over	Course °M (°T)	Magnetic Variation	Distance (NM)	Turn Direction	Altitude (ft)	Speed Limit (kt)	Navigation Specification
IF	LANLI	-	-	-	-	-	-	-	RNP 1
TF	NULGI	-	139 (143.0)	-	9.7	-	-	-	RNP 1
TF	KATFU	-	079 (082.6)	-	8.8	-	-5000 +3000	-185	RNP 1
TF	IVMAN	-	131 (134.9)	-	5.0	-	-	-185	RNP 1
TF	KEPUM	-	221 (225.0)	-	4.0	R	-	-185	RNP 1

MASEG 2R

Path Terminator	Waypoint Identifier	Fly Over	Course °M (°T)	Magnetic Variation	Distance (NM)	Turn Direction	Altitude (ft)	Speed Limit (kt)	Navigation Specification
IF	MASEG	-	-	-	-	-	-	-	RNP 1
TF	PY406	-	332 (335.4)	-	16.8	-	+4000	-	RNP 1
TF	INRIB	-	043 (046.8)	-	5.4	-	-5000 +3000	-185	RNP 1
TF	IVMAN	-	311 (315.1)	-	5.0	L	-	-185	RNP 1
TF	KEPUM	-	221 (225.0)	-	4.0	L	-	-185	RNP 1

HOLDING RNAV1

Path Terminator	Waypoint Identifier	Inbound Course °M (°T)	Leg Distance (NM) (1)	Timing(min.)/ Waypoint Distance (NM) (2)	Turn Direction	Minimum Altitude (FT)	Maximum Altitude (FL)	Speed Limit (kt)	Magnetic Variation (°)	Navigation Specification
HM	KEPUM	221° (225.0°)	3.0	- / 4.1	L	+2500	-4500	-185	+4	RNAV1
HM	KATFU	056° (060°)	3.3	- / 4.1	R	+3000	-	-185	+4	RNAV1
HM	INRIB	026° (030°)	3.1	- / 4.0	L	+3000	-	-185	+4	RNAV1
HM	ARKEM	353° (357°)	3.3	- / 4.1	L	+3000	-	-185	+4	RNAV1

(1) RNAV system with holding functionality

(2) RNAV system without holding functionality

WAYPOINT LIST

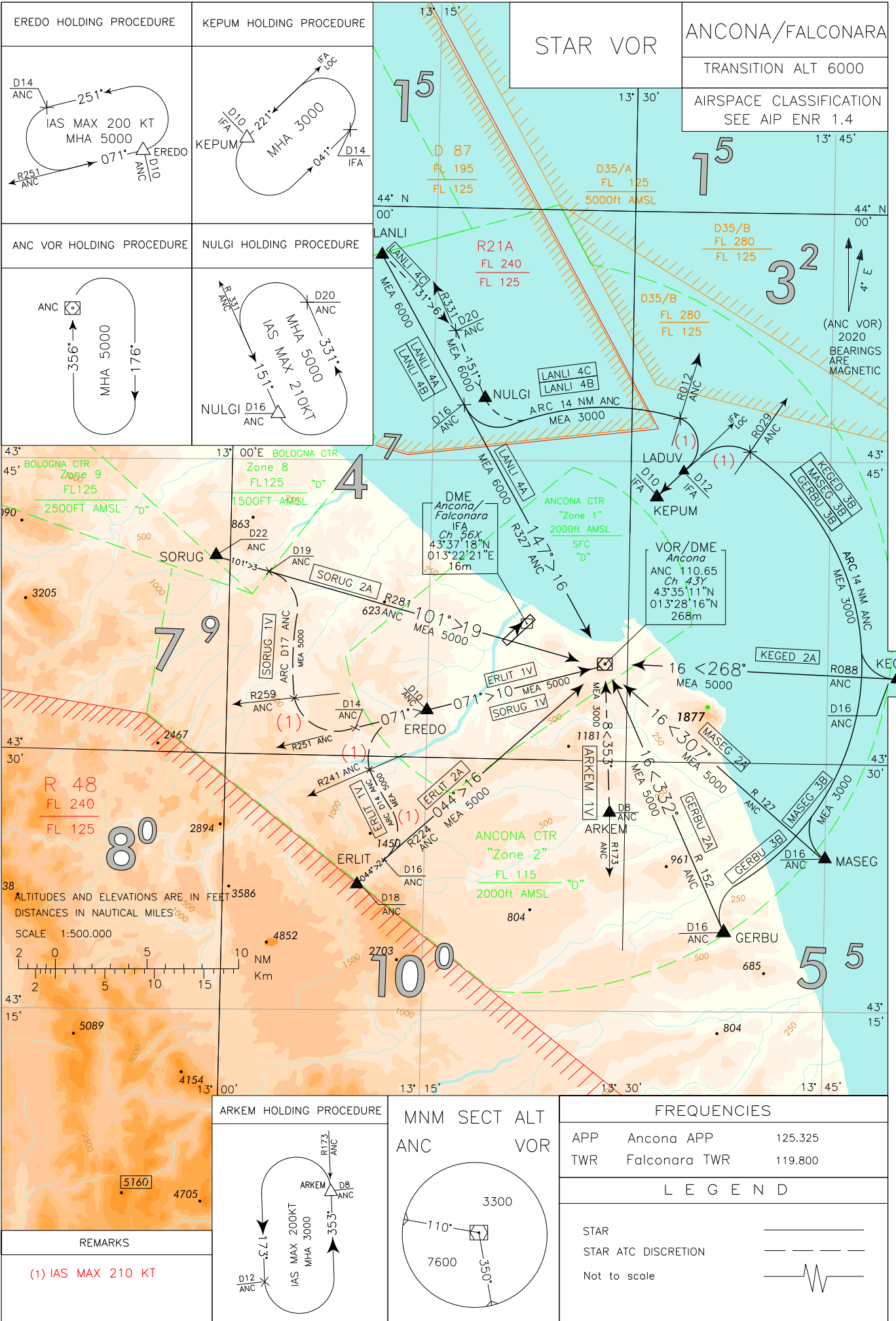
Waypoint Identifier	Coordinates
PY402	43°40'10.5" N 013°16'24.4" E
PY403	43°43'43.2" N 013°21'16.1" E
PY404	43°47'15.7" N 013°26'08.3" E
PY406	43°40'01.3" N 013°35'20.4" E

Intenzionalmente bianca

Intentionally left blank

DOC 8168 ED.6 - 2014 AMDT 8

CHANGE: ERLIT 1F and SORUG 1F WITHDRAWN - FAL L DISMISSED and GEO ATS UPDATED



STAR VOR Ancona Falconara**ARKEM 1V (ATC discretion)**

ARKEM follow TR 353° (RDL 173 ANC VOR) to ANC VOR/DME.

MEA: 3000 FT

ERLIT 2A

ERLIT follow TR 044° (RDL 224 ANC VOR) until ANC VOR/DME

MEA: 5000 FT

ERLIT 1V (ATC discretion)

ERLIT follow TR 044° (RDL 224 ANC VOR). At 16 NM ANC DME turn left (IAS MAX 210 Kt) until joining ARC 14 NM ANC DME, then, crossing RDL 241 ANC VOR, turn right (IAS MAX 210 Kt) on TR 071° (RDL 251 ANC VOR) bound to EREDO and continue to ANC VOR/DME.

MEA: 5000 FT

**GERBU 2A**

GERBU follow TR 332° (RDL 152 ANC VOR) until ANC VOR/DME

MEA: 5000 FT

GERBU 3B

GERBU turn right until joining ARC 14 NM ANC DME; crossing RDL 029 ANC VOR turn left (IAS MAX 210 KT) to intercept and follow IFA LOC bound to LADUV (12 NM IFA DME) then continue to KEPUM.

MEA: 3000 FT

KEGED 2A

KEGED follow TR 268° (RDL 088 ANC VOR) until ANC VOR/DME.

MEA: 5000 FT

KEGED 3B

KEGED turn right until joining ARC 14 NM ANC DME; crossing RDL 029 ANC VOR turn left (IAS MAX 210 KT) to intercept and follow IFA LOC bound to LADUV (12 NM IFA DME) then continue to KEPUM.

MEA: 3000 FT

MASEG 2A

MASEG follow TR 307° (RDL 127 ANC VOR) until ANC VOR/DME.

MEA: 5000 FT

MASEG 3B

MASEG turn right until joining ARC 14 NM ANC DME; crossing RDL 029 ANC VOR turn left (IAS MAX 210 KT) to intercept and follow IFA LOC bound to LADUV (12 NM IFA DME) then continue to KEPUM.

MEA: 3000 FT

LANLI 4A

LANLI follow TR 147° (RDL 327 ANC VOR) to ANC VOR/DME.

MEA: 6000 FT

LANLI 4B

LANLI follow TR 147° (RDL 327 ANC VOR) until 16NM ANC DME, then turn left until joining ARC 14 NM ANC DME; Crossing RDL 012 ANC VOR turn right (IAS MAX 210 KT) to intercept and follow IFA LOC bound to LADUV (12 NM IFA DME) then continue to KEPUM.

MEA: LANLI – INT RDL 327/16NM ANC VOR/DME: 6000 FT; INT RDL 327/16NM ANC VOR/DME – KEPUM: 3000 FT

LANLI 4C (ATC discretion)

LANLI follow TR 131° until 20NM ANC DME then TR 151° (RDL 331 ANC VOR) to NULGI. At NULGI turn left until joining ARC 14 NM ANC DME; crossing RDL 012 ANC VOR turn right (IAS MAX 210) to intercept and follow IFA LOC bound to LADUV (12 NM IFA DME) then continue to KEPUM.

MEA: LANLI – NULGI: 6000 FT; NULGI – KEPUM: 3000 FT

SORUG 2A

SORUG follow TR 101° (RDL 281 ANC VOR) until ANC VOR/DME.

MEA: 5000 FT

SORUG 1V (ATC Discretion)

SORUG follow TR 101° (RDL 281 ANC VOR). At 19 NM ANC DME turn right until joining ARC 17 NM ANC DME, then crossing RDL 259 ANC VOR, turn left (IAS MAX 210 KT) on TR 071° (RDL 251 ANC VOR) bound to EREDO and continue to ANC VOR/DME.

MEA: 5000 FT

