

DOC 8168-ED.6-2014

CHANGE: ATIS AND TWR FREQUENCY UPDATED

LEGEND		FREQUENCIES	
Initial climb	.....>	TWR	Villafranca TWR 121.755
SID	————>	APP	Milano Radar 135.900 (124.250)
SID ATC Discretion	- - - ->	ATIS	Verona Arrival and Departure Information 124.130
Not to Scale	~>		

**REMARKS**

(1) IAS MAX 220 KT for SID OTZOM 5C only

(2) MCA 6000 if proceeding via ECVAZ 5A, OTZOM 5A and UPCAL 5A

(3) Fly Over only for OTZOM 5A

(4) OTZOM MCL 95

(5) IAS MAX 220 KT

**SID RNAV 1 RWY 04**

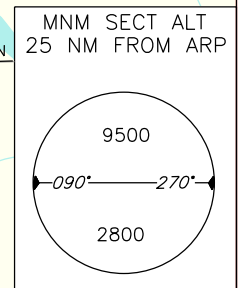
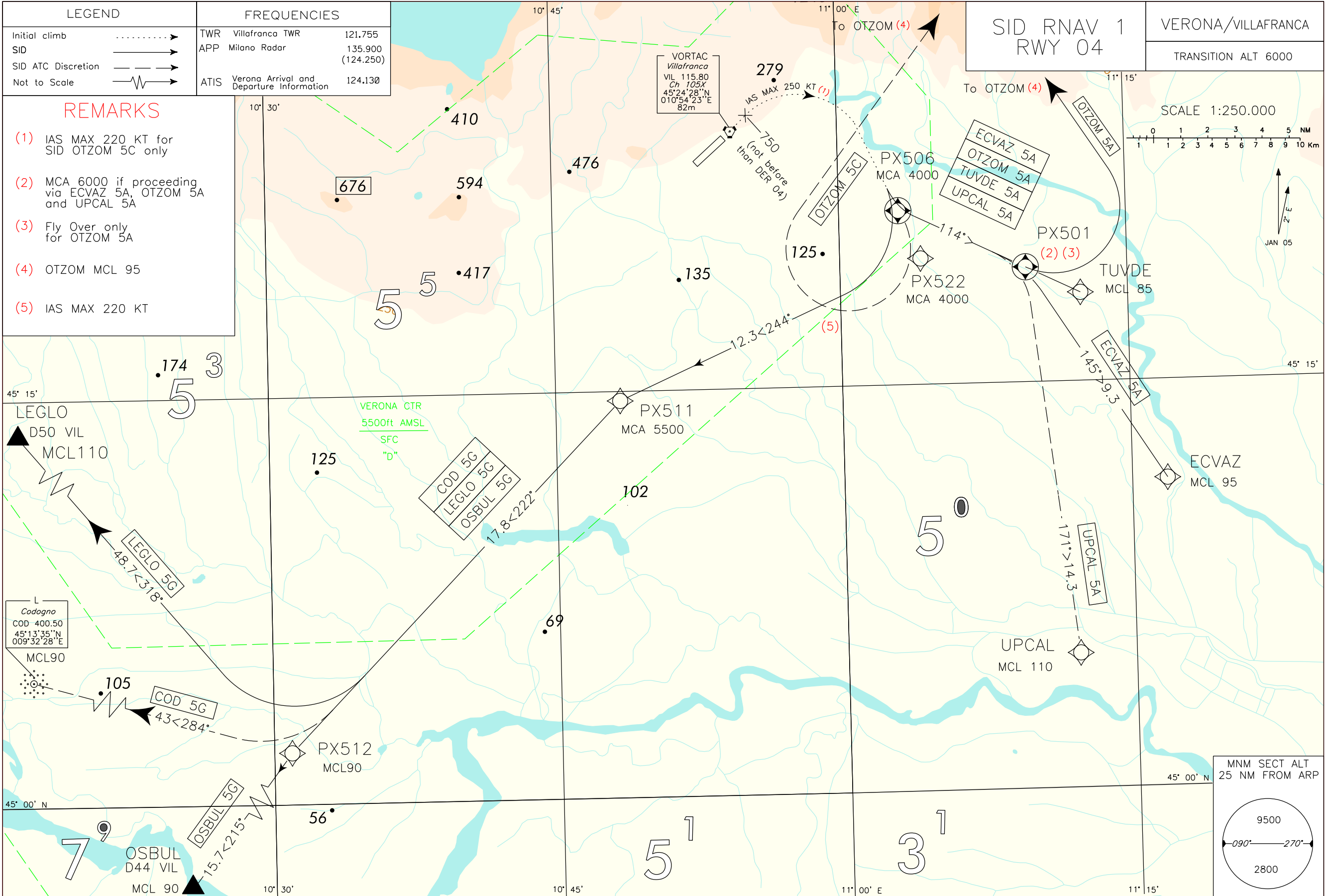
**VERONA/VILAFRANCA**

TRANSITION ALT 6000

SCALE 1:250.000

0 1 2 3 4 5 6 7 8 9 10 NM

0 1 2 3 4 5 6 7 8 9 10 Km



**VERONA/Villafranca  
SID RNAV 1 RWY 04**

**INITIAL CLIMB PROCEDURES RWY 04**

After take – off proceed runway heading and passing 750 ft turn right (not before than DER 04) to join the assigned SID.

Minimum climb gradient 600 ft/NM (9.8%) till passing 1000 FT then:

- a) if proceeding via SID ECVAZ 5A, OTZOM 5A, OTZOM 5C and UPCAL 5A: 395 ft/NM (6,5%);
- b) if proceeding via SID COD 5G, LEGLO 5G and OSBUL 5G: 304 ft/NM (5,0%), if proceeding via SID TUVDE 5A 515 ft/NM (8.5%), until passing FL 85 due to obstacles and ATC reasons.

**REMARKS**

- a) Adjust take-off climb rate in order to cross THR 22 at 65 ft above THR elevation.
- b) All turns after take-off shall be performed according to the following parameters:
  - IAS MAX 250 kt (220 kt for SID OTZOM 5C) and bank angle 20°, or
  - rate of turn 1.3°/sec
- c) Initial climb gradients do not take into account “close-in” obstacles lower than 60 m (200 ft), MOC included, above DER elevation.

**SID DESCRIPTION**

Initial climb procedure executed:

**COD 5G (ATC discretion)**

Path Terminator	Waypoint Name	Fly-Over	Track °Mag	Turn Direction	Altitude Constraint	Speed Limit (IAS)	Recommended Navaid	Bearing/Range to Navaid	Navigation Performance
FA	DER04	-	044°	-	+750	250	-	-	RNAV 1
DF	PX522	-	-	R	+4000	250	-	-	RNAV 1
TF	PX511	-	244°	-	+5500	-	-	-	RNAV 1
TF	PX512	-	222°	-	+FL90	-	-	-	RNAV 1
TF	COD	-	284°	-	+FL90	-	-	-	RNAV 1

**ECVAZ 5A**

Path Terminator	Waypoint Name	Fly-Over	Track °Mag	Turn Direction	Altitude Constraint	Speed Limit (IAS)	Recommended Navaid	Bearing/Range to Navaid	Navigation Performance
FA	DER04	-	044°	-	+750	250	-	-	RNAV 1
CF	PX501	-	114°	-	+6000	250	VIL VORTAC	RDL114/D12	RNAV 1
TF	ECVAZ	-	145°	-	+FL95	-	-	-	RNAV 1

**LEGLO 5G**

Path Terminator	Waypoint Name	Fly-Over	Track °Mag	Turn Direction	Altitude Constraint	Speed Limit (IAS)	Recommended Navaid	Bearing/Range to Navaid	Navigation Performance
FA	DER04	-	044°	-	+750	250	-	-	RNAV 1
DF	PX522	-	-	R	+4000	250	-	-	RNAV 1
TF	PX511	-	244°	-	+5500	-	-	-	RNAV 1
TF	PX512	-	222°	-	+FL90	-	-	-	RNAV 1
TF	LEGLO	-	318°	R	+FL110	-	-	-	RNAV 1

**OSBUL 5G**

Path Terminator	Waypoint Name	Fly-Over	Track °Mag	Turn Direction	Altitude Constraint	Speed Limit (IAS)	Recommended Navaid	Bearing/Range to Navaid	Navigation Performance
FA	DER04	-	044°	-	+750	250	-	-	RNAV 1
DF	PX522	-	-	R	+4000	250	-	-	RNAV 1
TF	PX511	-	244°	-	+5500	-	-	-	RNAV 1
TF	PX512	-	222°	-	+FL90	-	-	-	RNAV 1
TF	OSBUL	-	215°	-	+FL90	-	-	-	RNAV 1

**OTZOM 5A**

Path Terminator	Waypoint Name	Fly-Over	Track °Mag	Turn Direction	Altitude Constraint	Speed Limit (IAS)	Recommended Navaid	Bearing/Range to Navaid	Navigation Performance
FA	DER04	-	044°	-	+750	250	-	-	RNAV 1
CF	PX501	Y	114°	-	+6000	250	VIL VORTAC	RDL114/D12	RNAV 1
DF	OTZOM	-	-	L	+FL95	-	-	-	RNAV 1

**OTZOM 5C (ATC Discretion)**

Path Terminator	Waypoint Name	Fly-Over	Track °Mag	Turn Direction	Altitude Constraint	Speed Limit (IAS)	Recommended Navaid	Bearing/Range to Navaid	Navigation Performance
FA	DER04	-	044°	-	+750	220	-	-	RNAV 1
DF	PX506	Y	-	-	+4000	220	-	-	RNAV 1
DF	OTZOM	-	-	R	+FL95	-	-	-	RNAV 1

**TUVDE 5A**

Path Terminator	Waypoint Name	Fly-Over	Track °Mag	Turn Direction	Altitude Constraint	Speed Limit (IAS)	Recommended Navaid	Bearing/Range to Navaid	Navigation Performance
FA	DER04	-	044°	-	+750	250	-	-	RNAV 1
CF	PX501	-	114°	-	-	250	VIL VORTAC	RDL114/D12	RNAV 1
TF	TUVDE	-	114°	-	+FL85	-	-	-	RNAV 1

**UPCAL 5A (ATC discretion)**

Path Terminator	Waypoint Name	Fly-Over	Track °Mag	Turn Direction	Altitude Constraint	Speed Limit (IAS)	Recommended Navaid	Bearing/Range to Navaid	Navigation Performance
FA	DER04	-	044°	-	+750	250	-	-	RNAV 1
CF	PX501	-	114°	-	+6000	250	VIL VORTAC	RDL114/D12	RNAV 1
TF	UPCAL	-	171°	-	+FL110	-	-	-	RNAV 1

**Waypoints table formatted according ARINC 424 standards**

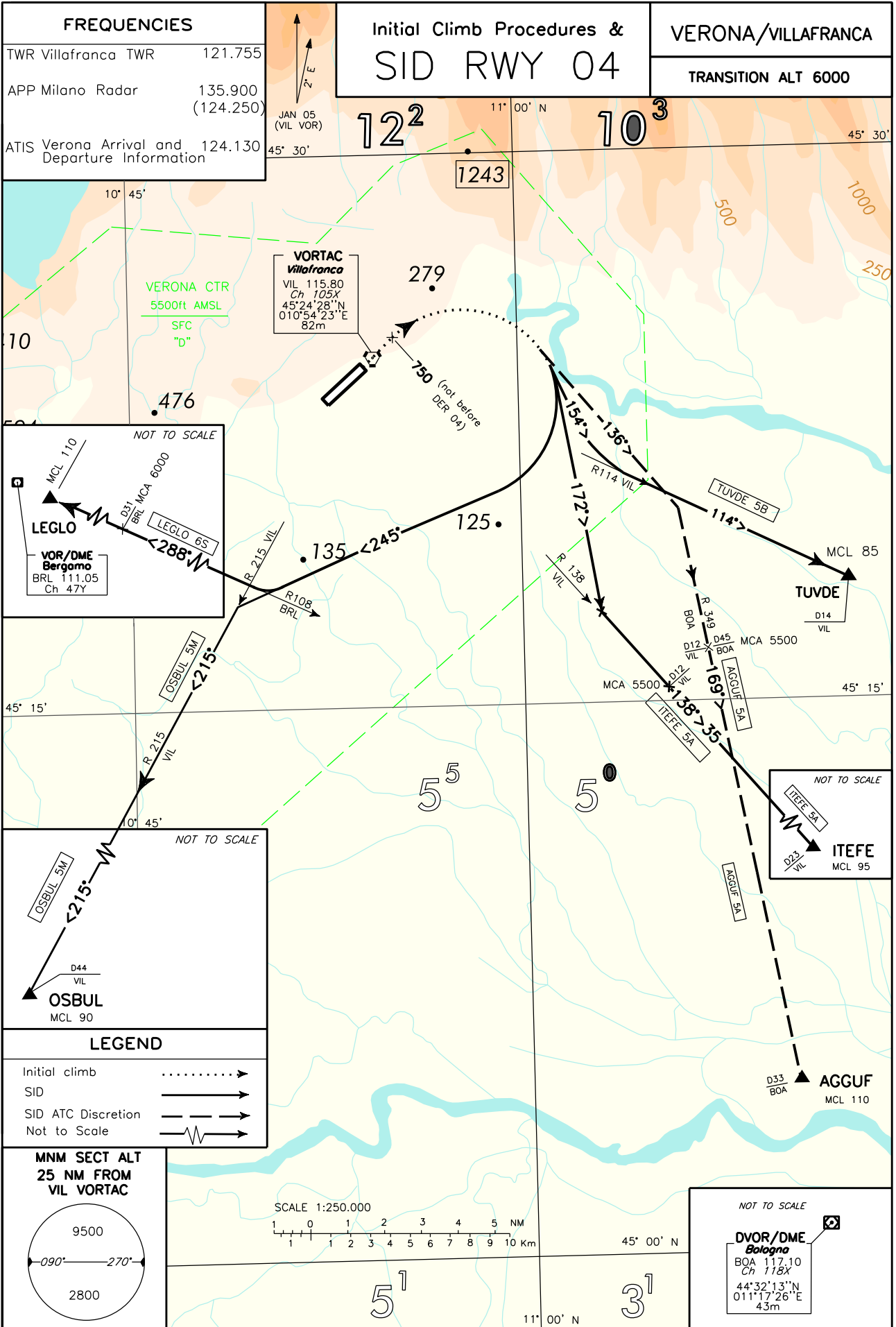
Waypoint	Latitude	Longitude
DER04	N45242751	E010542123
PX501	N45191367	E011094171
PX506	N45212519	E011030633
PX511	N45143904	E010482196
PX512	N45015454	E010305491
PX522	N45193819	E011041365

Intenzionalmente bianca

*Intentionally left blank*

DOC 8168-ED.6-2014

CHANGE: SID LEGLO 6S MODIFIED. COD L WITHDRAWN; ATIS AND TWR FREQUENCY UPDATED



**INITIAL CLIMB PROCEDURES RWY 04**

After take-off proceed runway heading and passing 750 ft turn right (not before than DER 04) to join the assigned SID.

Minimum climb gradient 600 ft/NM (9.8%) till passing 1000 FT then:

- a) if proceeding via SID TUVDE 5B: 515 ft/NM (8,5%);
- b) if proceeding via SID ITEFE 5A, LEGLO 6S and OSBUL 5M: 304 ft/NM (5,0%) until passing FL 85 due to obstacles and ATC reasons;
- c) If proceeding via SID AGGUF 5A: 450 ft/NM (7.4%).

**REMARKS**

- a) Adjust take-off climb rate in order to cross THR 22 at or above 65 ft above THR elevation.
- b) All turns after take-off shall be performed according to the following parameters:
  - IAS MAX 250 kt and bank angle 20°, or
  - rate of turn 1.3°/sec
- c) Initial climb gradients do not take into account “close-in” obstacles lower than 60 m (200 ft), MOC included, above DER elevation.

**SID DESCRIPTION**

Initial climb procedure executed:

**AGGUF 5A (ATC discretion)**

Proceed on TR 136° until joining RDL 349 BOA VOR bound to AGGUF.

MCA: RDL 349/45 NM BOA VOR/DME (or 12 NM VIL TACAN): 5500 FT; AGGUF: FL 110

**ITEFE 5A**

Proceed on TR 172° until joining RDL 138 VIL VOR bound to ITEFE.

MCA/MCL: RDL138/12 NM VIL VORTAC: 5500 FT; ITEFE: FL 95

**LEGLO 6S**

Proceed on TR 245° until joining RDL 108 BRL VOR (TR 288°) bound to LEGLO.

MCA/MCL: RDL108/31 NM BRL VOR/DME: 6000 FT; LEGLO FL 110

**OSBUL 5M**

Proceed on TR 245° until joining RDL 215 VIL VOR (TR 215°) bound to OSBUL.

MCA/MCL: OSBUL FL 90

**TUVDE 5B**

Proceed on TR 154° until joining RDL 114 VIL VOR bound to TUVDE.

MCA/MCL: TUVDE: FL85

Intenzionalmente bianca

*Intentionally left blank*



DOC8168-ED.6-2014

CHANGE: SID LEGLO 6U MODIFIED: COD L WITHDRAWN; ATIS AND TWR FREQUENCY UPDATED

FREQUENCIES	
TWR Villafranca TWR	121.755
APP Milano Radar	135.900 (124.250)
ATIS Verona Arrival and 124.130 Departure Information	

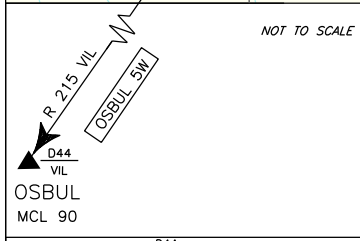
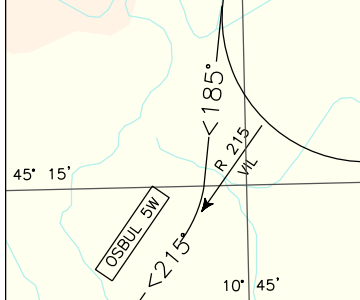
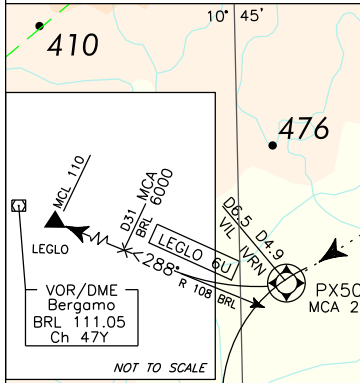
## Initial Climb Procedures & SID RWY 22

VERONA/VILLAGFRANCA
TRANSITION ALT 6000

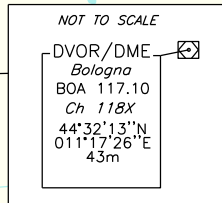
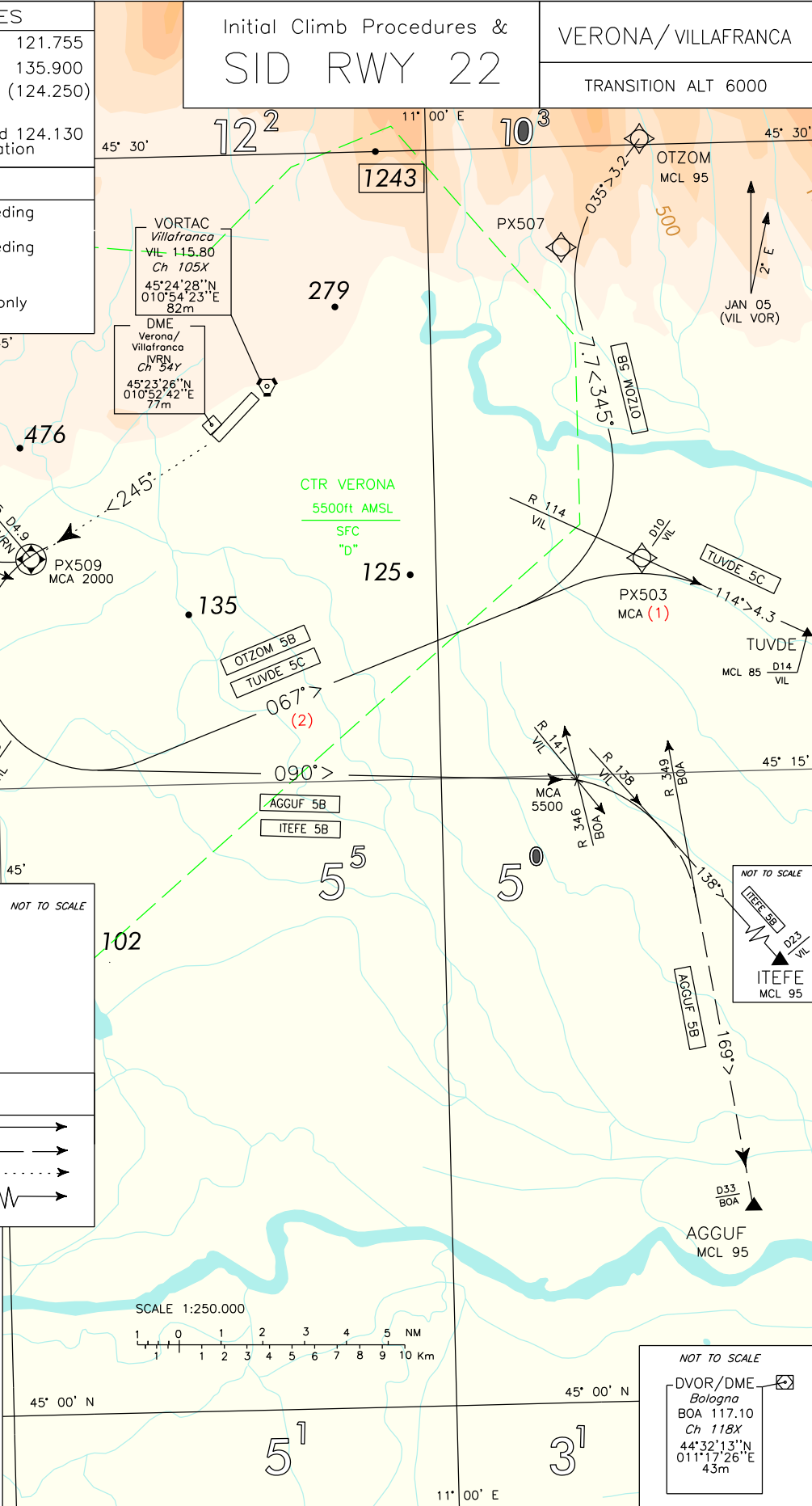
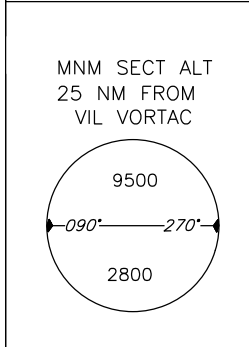
REMARKS

(1) MCA 5000 if proceeding via TUVDE 5C  
MCA 6000 if proceeding via OTZOM 5B

(2) TR 067° indication only for TUVDE 5C



LEGEND	
SID	—————>
SID ATC Discretion	- - - - ->
Initial climb	.....>
Not to Scale	~~~~~>



**INITIAL CLIMB PROCEDURES RWY22**

After take-off turn right (not before DER 22) on track 245° until 6.5 NM VIL TACAN (4.9 NM IVRN DME), to be crossed at 2000 ft or above, then turn left/right to join the assigned SID.

Minimum climb gradient: 400 ft/NM (6.5%) until passing FL 85 (FL 95 for OTZOM 5B) due to obstacles and ATC reasons.

**REMARKS**

- a) All turns after take-off shall be performed according to the following parameters:  
 - IAS MAX 250 kt and bank angle 20°, or  
 - rate of turn 1.3°/sec
- b) Initial climb gradients do not take into account “close-in” obstacles lower than 60 m (200 ft), MOC included, above DER elevation.

**SID DESCRIPTION**

Initial climb procedure executed:

**AGGUF 5B (ATC discretion)**

Turn left on TR 090°, then crossing RDL 141 VIL VOR (RDL 346 BOA VOR) turn right until joining RDL 349 BOA VOR (TR 169°) bound to AGGUF.

MCA: INT TR 090°/RDL 141 VIL VOR (RDL 346 BOA VOR) 5500 FT; AGGUF: FL95

**ITEFE 5B**

Turn left on TR 090° until joining RDL 138 VIL VOR bound to ITEFE.

MCA/MCL: INT TR 090°/RDL 141 VIL VOR, 5500 FT; ITEFE FL 95

**LEGLO 6U**

Turn right until joining RDL 108 BRL VOR bound to LEGLO.

MCA/MCL: RDL108/31 NM BRL VOR DME: 6000 FT; LEGLO FL 110

**OSBUL 5W**

Turn left on TR 185° until joining RDL 215 VIL VOR (TR 215°) bound to OSBUL.

MCL: OSBUL FL 90

**OTZOM 5B**

Path Terminator	Waypoint Name	Fly-Over	Track °Mag	Turn Direction	Altitude Constraint	Speed Limit (IAS)	Recommended Navaid	Bearing/Range to Navaid	Navigation Performance
FA	DER 22	-	-	-	+620	-	-	-	RNAV 1
CF	PX509	Y	245°	-	+2000	250	VIL VORTAC	RDL 233/D6.5	RNAV 1
DF	PX503	-	-	L	+6000	250	VIL VORTAC	RDL 114/D10	RNAV 1
TF	PX507	-	345°	L	-	-	-	-	RNAV 1
TF	OTZOM	-	035°	-	+FL95	-	-	-	RNAV 1

**TUVDE 5C**

Turn left on TR 067° until joining RDL 114 VIL VOR bound to TUVDE.

MCA/MCL: RDL114/10 NM VIL VORTAC: 5000 FT; TUVDE: FL 85

**Waypoints table formatted according ARINC 424 standards**

<b>Waypoint</b>	<b>Latitude</b>	<b>Longitude</b>
DER 22	N45230808	E010522570
PX503	N45200947	E011065943
PX507	N45273798	E011043120
PX509	N45204582	E010465071