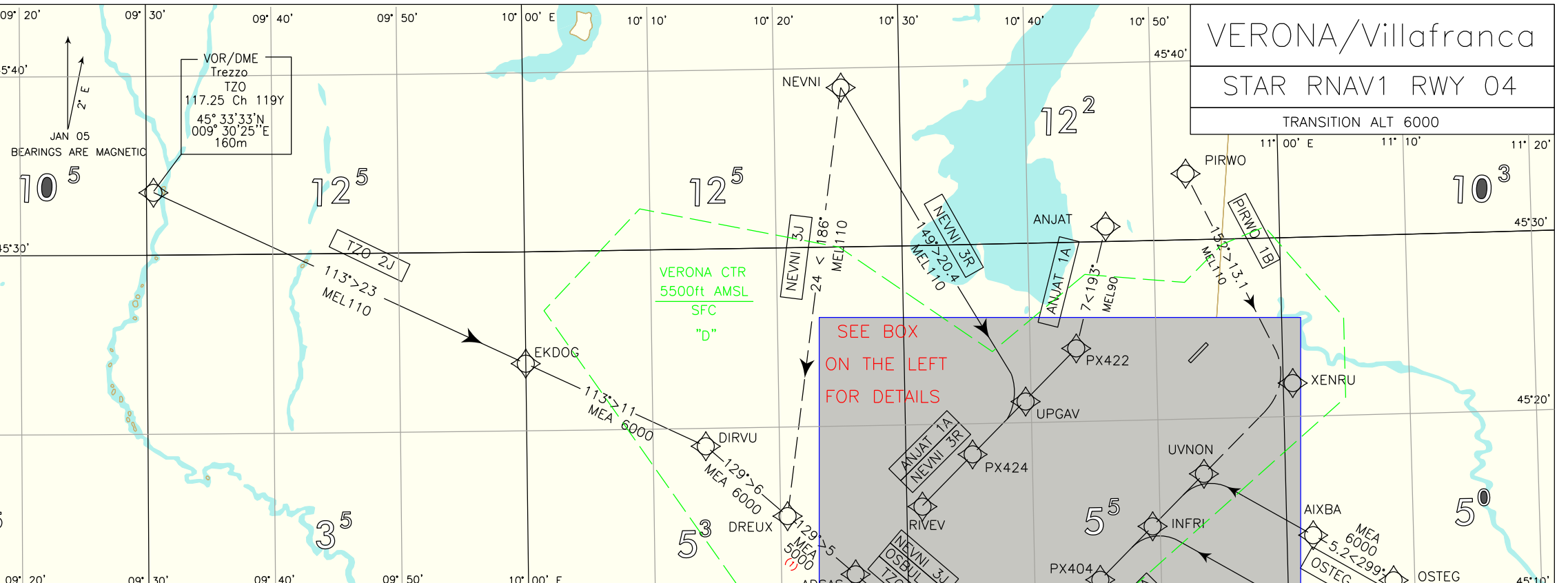


# VERONA/Villafranca

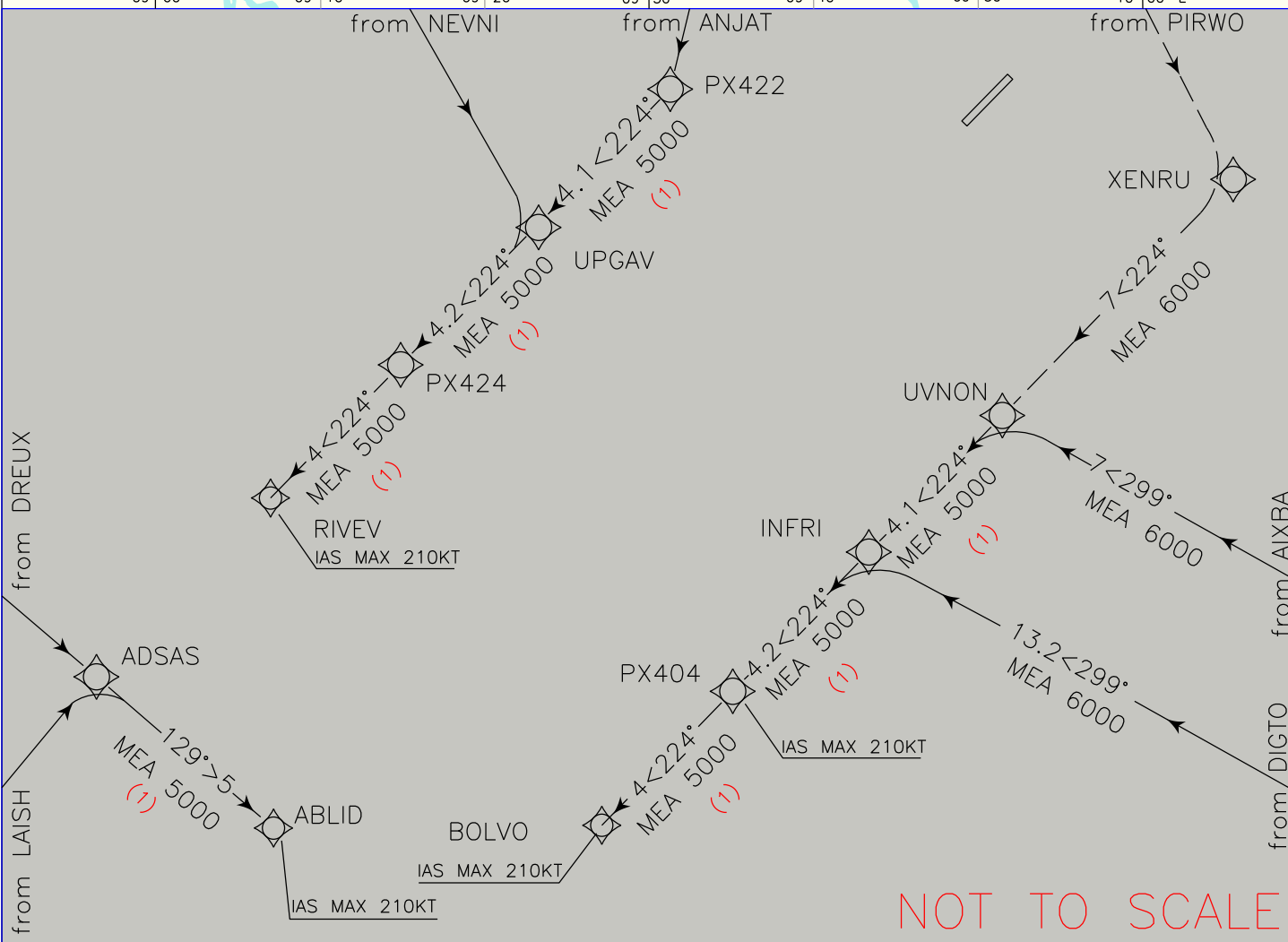
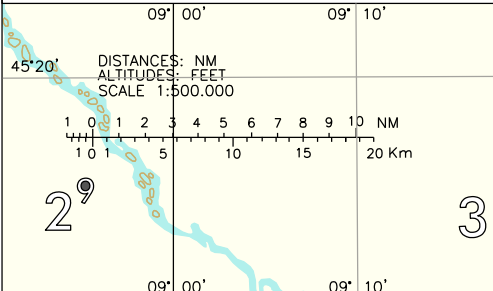
## STAR RNAV1 RWY 04

TRANSITION ALT 6000

FREQUENCIES	
APP Milano Radar	135.900 (124.250)
TWR Villafranca TWR	121.755
ATIS Verona Arrival and Departure Information	124.130
LEGEND	
STAR	—————>
STAR ATC DISCRETION	- - - - ->
REMARKS	
(1) MEA/MHA 3000FT ATC Discretion	
(2) MHA 4000FT ATC Discretion	
(3) Higher Altitude/Levels ATC Discretion	
(4) for RNAV system without RNAV Holding functionality	



CHANGE: TWR AND ATIS FREQUENCY UPDATED



NOT TO SCALE

MNM SECT ALT 25NM ARP	ABLID Holding Pattern	BOLVO Holding Pattern	RIVEV Holding Pattern
9500			
	RNAV MHA 5000FT (2) IAS MAX 210KT	RNAV MHA 5000FT (1) (3) IAS MAX 210KT	RNAV MHA 5000FT (2) IAS MAX 210KT

**VERONA/Villafranca**  
**STAR RNAV 1 RWY 04**

**ANJAT 1A**

Path Terminator	Waypoint Name	Fly Over	Track °Mag	Turn Direction	Altitude Constraint	Speed Limit (IAS)	Recommended Navaid	Bearing/Range to Navaid	Navigation Performance
IF	ANJAT	-	-	-	-	-	-	-	RNAV 1
TF	PX422	-	193°	-	+FL90	-	-	-	RNAV 1
TF	UPGAV	-	224°	-	-	-	-	-	RNAV 1
TF	PX424	-	224°	-	-	-	-	-	RNAV 1
TF	RIVEV	-	224°	-	+5000FT (1)	210	-	-	RNAV 1

**NEVNI 3J (ATC Discretion)**

Path Terminator	Waypoint Name	Fly Over	Track °Mag	Turn Direction	Altitude Constraint	Speed Limit (IAS)	Recommended Navaid	Bearing/Range to Navaid	Navigation Performance
IF	NEVNI	-	-	-	-	-	-	-	RNAV 1
TF	DREUX	-	186°	-	+FL110	-	-	-	RNAV 1
TF	ADSAS	-	129°	-	-	-	-	-	RNAV 1
TF	ABLID	-	129°	-	+5000FT (1)	210	-	-	RNAV 1

**NEVNI 3R**

Path Terminator	Waypoint Name	Fly Over	Track °Mag	Turn Direction	Altitude Constraint	Speed Limit (IAS)	Recommended Navaid	Bearing/Range to Navaid	Navigation Performance
IF	NEVNI	-	-	-	-	-	-	-	RNAV 1
TF	UPGAV	-	149°	-	+FL110	-	-	-	RNAV 1
TF	PX424	-	224°	-	-	-	-	-	RNAV 1
TF	RIVEV	-	224°	-	+5000FT (1)	210	-	-	RNAV 1

**OSBUL 2J**

Path Terminator	Waypoint Name	Fly Over	Track °Mag	Turn Direction	Altitude Constraint	Speed Limit (IAS)	Recommended Navaid	Bearing/Range to Navaid	Navigation Performance
IF	OSBUL	-	-	-	-	-	-	-	RNAV 1
TF	LAISH	-	348°	-	+6000FT	-	-	-	RNAV 1
TF	ADSAS	-	039°	-	-	-	-	-	RNAV 1
TF	ABLID	-	129°	R	+5000FT (1)	210	-	-	RNAV 1

**OSTEG 3J**

Path Terminator	Waypoint Name	Fly Over	Track °Mag	Turn Direction	Altitude Constraint	Speed Limit (IAS)	Recommended Navaid	Bearing/Range to Navaid	Navigation Performance
IF	OSTEG	-	-	-	-	-	-	-	RNAV 1
TF	AIXBA	-	299°	-	-	-	-	-	RNAV 1
TF	UVNON	-	299°	-	+6000FT	-	-	-	RNAV 1
TF	INFRI	-	224°	-	-	-	-	-	RNAV 1
TF	PX404	-	224°	-	-	210	-	-	RNAV 1
TF	BOLVO	-	224°	-	+5000FT (1)	210	-	-	RNAV 1

**PIRWO 1B (ATC Discretion)**

Path Terminator	Waypoint Name	Fly Over	Track °Mag	Turn Direction	Altitude Constraint	Speed Limit (IAS)	Recommended Navaid	Bearing/ Range to Navaid	Navigation Performance
IF	PIRWO	-	-	-	-	-	-	-	RNAV 1
TF	XENRU	-	152°	-	+FL110	-	-	-	RNAV 1
TF	UVNON	-	224°	-	+6000FT	-	-	-	RNAV 1
TF	INFRI	-	224°	-	-	-	-	-	RNAV 1
TF	PX404	-	224°	-	-	210	-	-	RNAV 1
TF	BOLVO	-	224°	-	+5000FT (1)	210	-	-	RNAV 1

**TZO 2J**

Path Terminator	Waypoint Name	Fly Over	Track °Mag	Turn Direction	Altitude Constraint	Speed Limit (IAS)	Recommended Navaid	Bearing/ Range to Navaid	Navigation Performance
IF	TZO	-	-	-	-	-	-	-	RNAV 1
TF	EKDOG	-	113°	-	+FL110	-	-	-	RNAV 1
TF	DIRVU	-	113°	-	-	-	-	-	RNAV 1
TF	DREUX	-	129°	-	+6000FT	-	-	-	RNAV 1
TF	ADSAS	-	129°	-	-	-	-	-	RNAV 1
TF	ABLID	-	129°	-	+5000FT (1)	210	-	-	RNAV 1

**XUBKA 1A**

Path Terminator	Waypoint Name	Fly Over	Track °Mag	Turn Direction	Altitude Constraint	Speed Limit (IAS)	Recommended Navaid	Bearing/ Range to Navaid	Navigation Performance
IF	XUBKA	-	-	-	-	-	-	-	RNAV 1
TF	DIGTO	-	344°	-	+6000FT	-	-	-	RNAV 1
TF	INFRI	-	299°	-	-	-	-	-	RNAV 1
TF	PX404	-	224°	-	-	210	-	-	RNAV 1
TF	BOLVO	-	224°	-	+5000FT (1)	210	-	-	RNAV 1

**HOLDING RNAV**

Path Terminator	Waypoint Name	Inbound Track	Leg distance	Turn Direction	Altitude Constraint	Speed Limit	Magnetic Variation	Navigation Specification	Waypoint Distance (only for RNAV system without RNAV functionality)
HF	ABLID	044°	4.0	R	5000 (2)	210	2.1	RNAV 1	5.5
HF	BOLVO	224°	4.0	L	5000 (1) (3)	210	2.1	RNAV 1	5.5
HF	RIVEV	224°	4.0	R	5000 (2)	210	2.1	RNAV 1	5.5

**REMARKS**

(1) MEA/MHA 3000FT a discrezione ATC/ATC Discretion

(2) MHA 4000FT a discrezione ATC/ATC Discretion

(3) Altitudini o Livelli superiori a discrezione ATC / Higher Altitudes or Levels ATC Discretion

**Waypoints Table formatted according ARINC 424 standards**

Waypoint	Latitude	Longitude
PX404	N45110786	E010451015
PX422	N45240518	E010433963
PX424	N45181718	E010351675

Intenzionalmente bianca

*Intentionally left blank*

# VERONA/Villafranca

## STAR RWY 04

TRANSITION ALT 6000

### FREQUENCIES

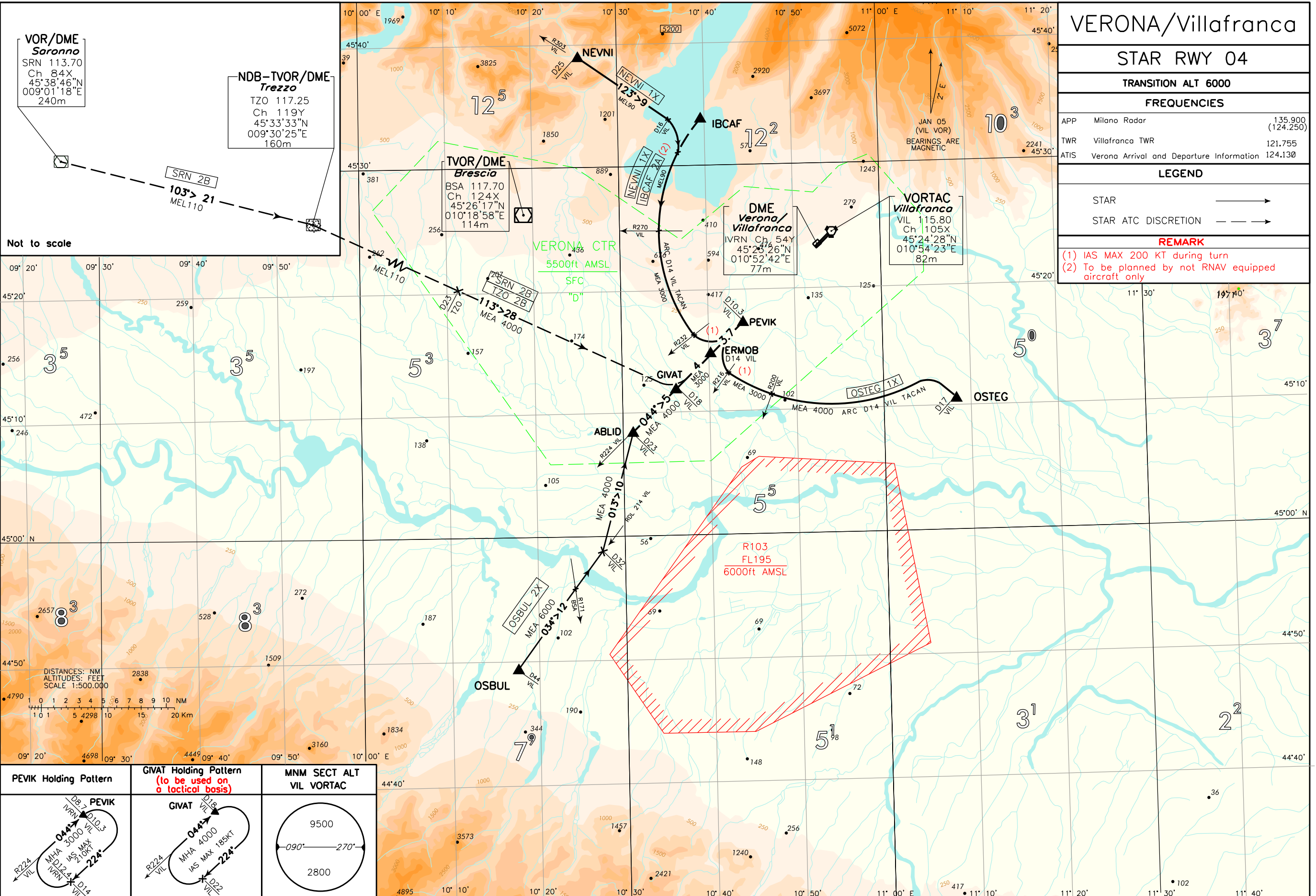
APP	Milano Radar	135.900 (124.250)
TWR	Villafranca TWR	121.755
ATIS	Verona Arrival and Departure Information	124.130

### LEGEND

STAR	→
STAR ATC DISCRETION	- - - - -

### REMARK

- (1) IAS MAX 200 KT during turn
- (2) To be planned by not RNAV equipped aircraft only



<b>PEVIK Holding Pattern</b>	<b>GIVAT Holding Pattern (to be used on a tactical basis)</b>	<b>MNM SECT ALT VIL VORTAC</b>

**STAR RWY 04 VERONA/Villafranca****IBCAF 2A (ATC discretion) (1)**

IBCAF proceed on ARC 14 NM VIL TACAN. Crossing RDL 232 VIL VOR turn left on RDL 224 VIL VOR bound to PEVIK (IAS MAX 200kt during turn).

MEL/MEA: IBCAF – ARC 14 NM VIL TACAN/RDL 270 VIL VOR: FL 90; ARC 14 NM VIL TACAN/RDL 270 VIL VOR – PEVIK: 3000FT

(1) To be planned by not RNAV equipped aircraft only

**NEVNI 1X**

NEVNI proceed on TR123° (RDL 303 VIL VOR) until 16NM VIL TACAN, then turn right to join ARC 14NM VIL TACAN. Crossing RDL 232 VIL VOR turn left on RDL 224 VIL VOR bound to PEVIK (IAS MAX 200kt during turn).

MEL/MEA: NEVNI - ARC 14 NM VIL TACAN/RDL 270 VIL VOR: FL 90; ARC 14 NM VIL TACAN/RDL 270 VIL VOR – PEVIK: 3000FT

**OSBUL 2X**

OSBUL proceed on TR 034° (RDL 214 VIL VOR) until 32NM VIL TACAN, then turn left on TR 013° to ABLID, then TR 044° (RDL 224 VIL VOR) bound to GIVAT, ERMOb and PEVIK.

MEA: OSBUL – INT RDL 214 VIL VOR/RDL 171 BSA VOR: 6000FT; INT RDL 214 VIL VOR/RDL 171 BSA VOR – GIVAT: 4000FT;  
GIVAT – PEVIK: 3000FT

**OSTEG 1X**

OSTEG then turn left to join ARC 14NM VIL TACAN. Crossing RDL 216 VIL VOR turn right on RDL 224 VIL VOR bound to PEVIK (IAS MAX 200kt during turn).

MEA: OSTEG – ARC 14 NM VIL TACAN/RDL 200 VIL VOR: 4000FT; ARC 14 NM VIL TACAN/RDL 200 VIL VOR – PEVIK: 3000FT

**SRN 2B (ATC discretion)**

SRN VOR/DME proceed on RDL 103 SRN VOR bound to TZO VOR/DME/NDB, then proceed on RDL/QDR 113 TZO VOR/NDB until GIVAT, then RDL 224 VIL VOR bound to PEVIK.

MEL/MEA: SRN VOR/DME – RDL/QDR 113/23NM TZO VOR/DME/NDB: FL 110;  
RDL/QDR 113/23NM TZO VOR/DME/NDB – GIVAT: 4000FT; GIVAT – PEVIK: 3000FT

**TZO 2B (ATC discretion)**

TZO VOR/DME/NDB proceed on RDL/QDR 113 TZO VOR/NDB until GIVAT, then RDL 224 VIL VOR bound to PEVIK.

MEL/MEA: TZO VOR/DME/NDB – RDL/QDR 113/23NM TZO VOR/DME/NDB: FL 110; RDL/QDR 113/23NM TZO VOR/DME/NDB – GIVAT:  
4000FT; GIVAT – PEVIK: 3000FT

Intenzionalmente bianca

*Intentionally left blank*