

SID RNAV 1 RWY 31 RIMINI

FREQUENCIES

TWR Rimini TWR 131.225

APP Bologna APP/Radar 118.150 (133.775)

TRANSITION ALT 6000

AIRSPACE CLASSIFICATION SEE AIP ENR 1.4

REMARKS

(1) For AMLON 5N, ANC 5N minimum climb gradient 6.7% (407 FT/NM) until 6000 Ft.

(2) For EKTUK 5N, PELEG 5P and PELEG 5T minimum climb gradient 6.5% (392 FT/NM).

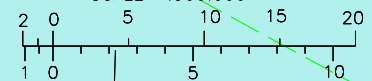
(3) AT or ABOVE FL95 only for PELEG 5P

BEARINGS TRACKS AND RADIALS ARE MAGNETIC

ALTITUDES AND ELEVATIONS ARE IN FEET

DISTANCE IN NAUTICAL MILES

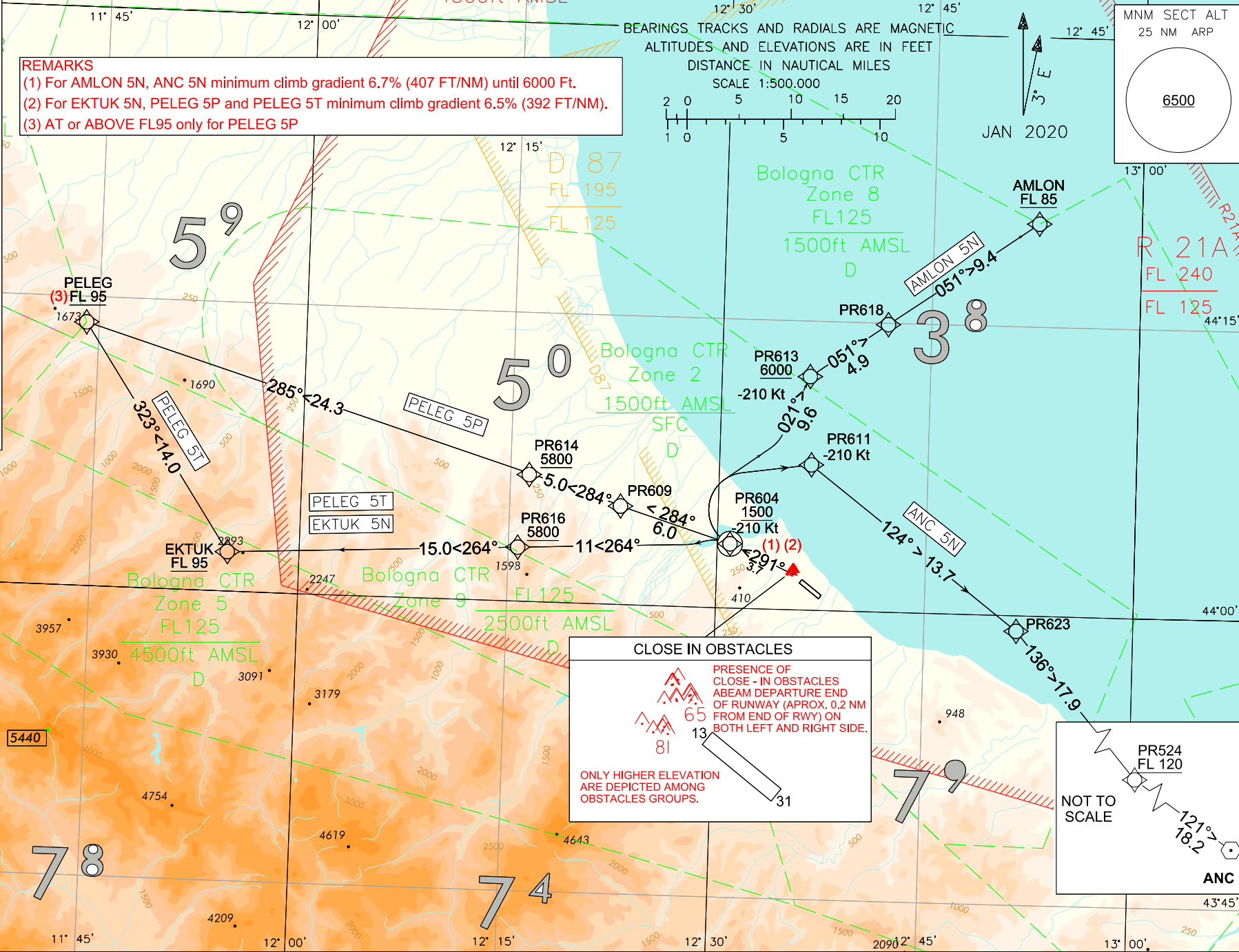
SCALE 1:500,000



JAN 2020

MNM SECT ALT
25 NM ARP

6500



CLOSE IN OBSTACLES

PRESENCE OF CLOSE - IN OBSTACLES ABEAM DEPARTURE END OF RUNWAY (APPROX. 0.2 NM FROM END OF RWY) ON BOTH LEFT AND RIGHT SIDE.

65
81
13
31

ONLY HIGHER ELEVATION ARE DEPICTED AMONG OBSTACLES GROUPS.

NOT TO SCALE

PR524 FL 120

121° > 18.2

ANC

43°45'

RIMINI / Miramare
SID RNAV 1 RWY 31

NOISE ABATEMENT PROCEDURES RWY 31

See AD 2 Table 21 “NOISE ABATEMENT PROCEDURES”

REMARKS

Minimum Climb Gradient: 6.5% (392 FT/NM) until 6000 Ft.

Minimum Climb Gradient: 6.7% (400 FT/NM) until 6000 Ft for SID AMLON 5N.

AMLON 5N

Path Terminator	Waypoint Identifier	Fly Over	Course °M (°T)	Magnetic Variation	Distance (NM)	Turn Direction	Altitude (ft)	Speed Limit (kt)	Navigation Specification
CA	-	-	291 (294.0)	+3.4	-	-	+430	-210	RNAV 1
CF	PR604	Y	291 (294.0)	+3.4	3.7	-	+1500	-210	RNAV 1
TF	PR613	N	021 (023.9)	-	9.6	-	+6000	-210	RNAV 1
TF	PR618	N	051 (054.7)	-	4.9	-	-	-	RNAV 1
TF	AMLON	N	051 (054.8)	-	9.4	-	+ FL 85	-	RNAV 1

ANC 5N

Path Terminator	Waypoint Identifier	Fly Over	Course °M (°T)	Magnetic Variation	Distance (NM)	Turn Direction	Altitude (ft)	Speed Limit (kt)	Navigation Specification
CA	-	-	291 (294.0)	+3.4	-	-	+430	-210	RNAV 1
CF	PR604	Y	291 (294.0)	+3.4	3.7	-	+1500	-210	RNAV 1
DF	PR611	N	-	-	-	R	-	-210	RNAV 1
TF	PR623	N	124 (127.4)	-	13.7	-	-	-	RNAV 1
TF	PR524	N	136 (139.3)	-	17.9	-	+FL120	-	RNAV 1
TF	ANC	N	121 (124.9)	-	18.2	-	-	-	RNAV 1

EKTUK 5N

Path Terminator	Waypoint Identifier	Fly Over	Course °M (°T)	Magnetic Variation	Distance (NM)	Turn Direction	Altitude (ft)	Speed Limit (kt)	Navigation Specification
CA	-	-	291 (294.0)	+3.4	-	-	+430	-210	RNAV 1
CF	PR604	Y	291 (294.0)	+3.4	3.7	-	+1500	-210	RNAV 1
TF	PR616	N	264 (267.4)	-	11.0	-	+5800	-	RNAV 1
TF	EKTUK	N	264 (267.2)	-	15.0	-	+FL95	-	RNAV 1

PELEG 5P

Path Terminator	Waypoint Identifier	Fly Over	Course °M (°T)	Magnetic Variation	Distance (NM)	Turn Direction	Altitude (ft)	Speed Limit (kt)	Navigation Specification
CA	-	-	291 (294.0)	+3.4	-	-	+430	-210	RNAV 1
CF	PR604	Y	291 (294.0)	+3.4	3.7	-	+1500	-210	RNAV 1
TF	PR609	N	284 (287.3)	-	6.0	-	-	-	RNAV 1
TF	PR614	N	284 (287.2)	-	5.0	-	+5800	-	RNAV 1
TF	PELEG	N	284 (287.2)	-	24.3	-	+FL95	-	RNAV 1

PELEG 5T

Path Terminator	Waypoint Identifier	Fly Over	Course °M (°T)	Magnetic Variation	Distance (NM)	Turn Direction	Altitude (ft)	Speed Limit (kt)	Navigation Specification
CA	-	-	291 (294.0)	+3.4	-	-	+430	-210	RNAV 1
CF	PR604	Y	291 (294.0)	+3.4	3.7	-	+1500	-210	RNAV 1
TF	PR616	N	264 (267.4)	-	11.0	-	+5800	-	RNAV 1
TF	EKTUK	N	264 (267.2)	-	15.0	-	+FL 95	-	RNAV 1
TF	PELEG	N	323 (326.4)	-	14.0	-	-	-	RNAV 1

WAYPOINT LIST

Waypoint Identifier	Coordinates
PR524	43°45'38.57" N - 013°07'44.40" E
PR604	44°03'20.01" N - 012°30'55.16" E
PR609	44°05'06.92" N - 012°22'58.33" E
PR611	44°07'33.00" N - 012°36'36.75" E
PR613	44°12'07.44" N - 012°36'20.84" E
PR614	44°06'35.58" N - 012°16'20.62" E
PR616	44°02'48.87" N - 012°15'41.00" E
PR618	44°14'55.82" N - 012°41'52.15" E
PR623	43°59'12.83" N - 012°51'37.93" E

SID RNAV 1 RWY 13 RIMINI

TRANSITION ALT 6000

AIRSPACE CLASSIFICATION SEE AIP ENR 1.4

FREQUENCIES

TWR Rimini TWR	131.225
APP Bologna APP/Radar	118.150 (133.775)

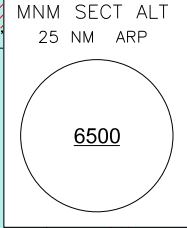
REMARKS

(1) For AMLON 5S, EKTUK 5S and PELEG 5S minimum climb gradient 5.6% (340 FT/NM) until 6000 Ft.

(2) For SID ANC 5S minimum climb gradient 5.6% (340 FT/NM) until FL90.

BEARINGS TRACKS AND RADIALS ARE MAGNETIC
ALTITUDES AND ELEVATIONS ARE IN FEET
DISTANCE IN NAUTICAL MILES

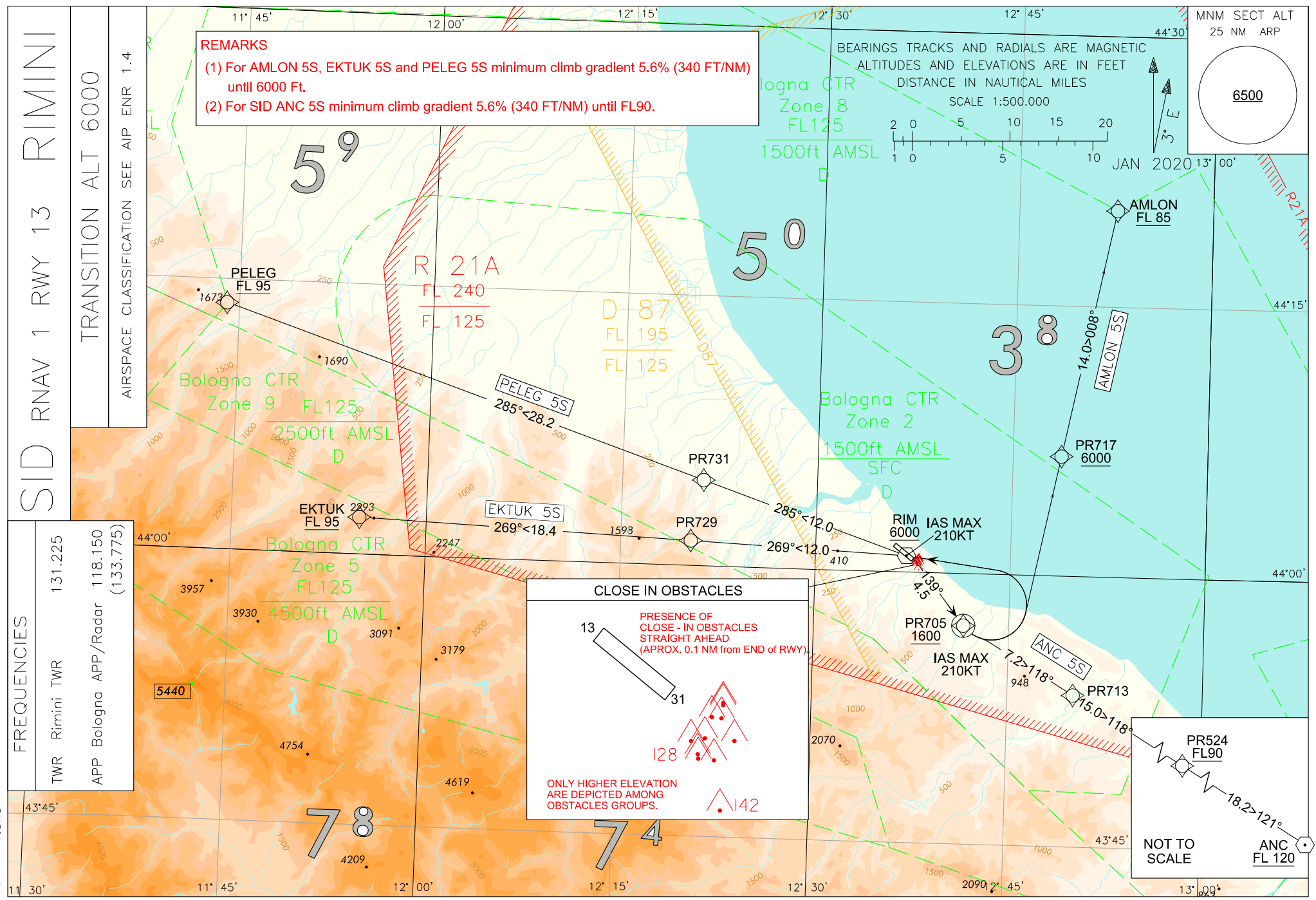
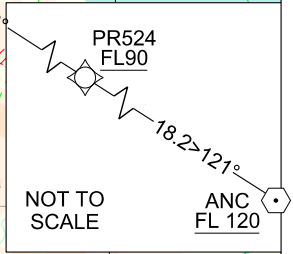
SCALE 1:500,000



CLOSE IN OBSTACLES

PRESENCE OF CLOSE-IN OBSTACLES STRAIGHT AHEAD (APROX. 0.1 NM from END of RWY).

ONLY HIGHER ELEVATION ARE DEPICTED AMONG OBSTACLES GROUPS.



RIMINI / Miramare
SID RNAV 1 RWY 13

NOISE ABATEMENT PROCEDURES RWY 13

See AD 2 Table 21 “NOISE ABATEMENT PROCEDURES”

REMARKS

Minimum Climb Gradient: 5.6% (340 FT/NM) until leaving 6000 Ft.

Minimum Climb Gradient: 5.6% (340 FT/NM) until leaving FL90 for SID ANC 5S.

AMLON 5S

Path Terminator	Waypoint Identifier	Fly Over	Course °M (°T)	Magnetic Variation	Distance (NM)	Turn Direction	Altitude (ft)	Speed Limit (kt)	Navigation Specification
CA	-	-	139 (142.0)	+3.4	-	-	+450	-210	RNAV 1
CF	PR705	Y	139 (142.0)	+3.4	-	-	+1600	-210	RNAV 1
DF	PR717	N	-	-	-	-	+6000	-	RNAV 1
TF	AMLON	N	008 (011.4)	-	14.0	-	+FL 85	-	RNAV 1

ANC 5S

Path Terminator	Waypoint Identifier	Fly Over	Course °M (°T)	Magnetic Variation	Distance (NM)	Turn Direction	Altitude (ft)	Speed Limit (kt)	Navigation Specification
CA	-	-	139 (142.0)	+3.4	-	-	+450	-210	RNAV 1
CF	PR705	Y	139 (142.0)	+3.4	-	-	+1600	-210	RNAV 1
TF	PR713	N	118 (120.9)	-	7.2	-	-	-	RNAV 1
TF	PR524	N	118 (121.2)	-	15.0	-	+FL90	-	RNAV 1
TF	ANC	N	121 (124.9)	-	18.2	-	+FL 120	-	RNAV 1

EKTUK 5S

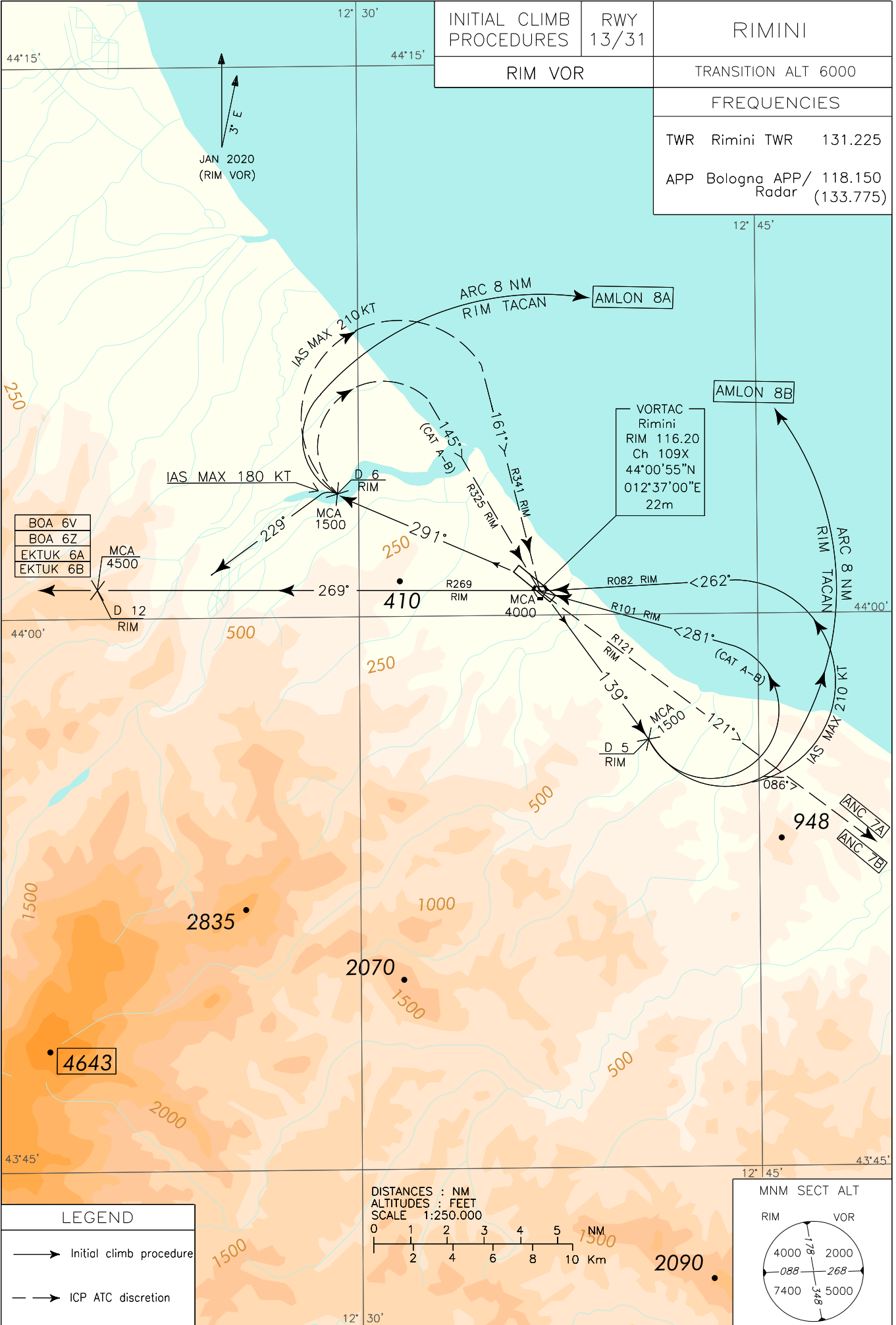
Path Terminator	Waypoint Identifier	Fly Over	Course °M (°T)	Magnetic Variation	Distance (NM)	Turn Direction	Altitude (ft)	Speed Limit (kt)	Navigation Specification
CA	-	-	139 (142.0)	+3.4	-	-	+450	-210	RNAV 1
CF	PR705	Y	139 (142.0)	+3.4	-	-	+1600	-210	RNAV 1
DF	RIM	N	-	-	-	L	+6000	-210	RNAV 1
TF	PR729	N	269 (272.4)	-	12.0	-	-	-	RNAV 1
TF	EKTUK	N	269 (272.2)	-	18.4	-	+FL 95	-	RNAV 1

PELEG 5S

Path Terminator	Waypoint Identifier	Fly Over	Course °M (°T)	Magnetic Variation	Distance (NM)	Turn Direction	Altitude (ft)	Speed Limit (kt)	Navigation Specification
CA	-	-	139 (142.0)	+3.4	-	-	+450	-210	RNAV 1
CF	PR705	Y	139 (142.0)	+3.4	-	-	+1600	-210	RNAV 1
DF	RIM	N	-	-	-	L	+6000	-210	RNAV 1
TF	PR731	N	285 (288.8)	-	12.0	-	-	-	RNAV 1
TF	PELEG	N	285 (288.6)	-	28.2	-	+FL 95	-	RNAV 1

WAYPOINT LIST

Waypoint Identifier	Coordinates
PR524	43°45'38.57" N - 013°07'44.40" E
PR705	43°57'07.27" N - 012°41'30.94" E
PR713	43°53'24.85" N - 012°50'03.36" E
PR717	44°06'39.07" N - 012°48'43.59" E
PR729	44°01'23.44" N - 012°20'22.89" E
PR731	44°04'45.86" N - 012°21'14.50" E



NOISE ABATEMENT PROCEDURES RWY 31

See AD 2 Table 21 “NOISE ABATEMENT PROCEDURES”

INITIAL CLIMB PROCEDURES RWY 31

After take-off, as soon as practicable, turn left on TR 291° and at 6NM RIM TACAN, to be crossed at 1500 ft or above, then if cleared via:

- a) SID AMLON 8A: turn right until joining ARC 8NM RIM TACAN, then proceed along the assigned SID;
- b) SID ANC 7A: turn right (IAS MAX 210 kt during turn) on TR 161° (RDL 341 RIM VOR) or TR 145° (RDL 325 RIM VOR) for aircraft CAT. A/B bound to RIM VORTAC, to be crossed at 4000 ft or above, then leave RIM VOR on RDL 121 and proceed along the assigned SID;
- c) SID BOA 6V and EKTUK 6A: turn left (IAS MAX 180 kt during turn) on TR 229° until joining RDL 269 RIM VOR until 12NM RIM TACAN, to be crossed at 4500 ft or above, then proceed along the assigned SID.

Minimum climb gradient:

392 ft/NM (6.5%) due to obstacles (in turning area) and ATC reasons until passing:

- 3000 ft for SID ANC 7A;
- 5000 ft for SID AMLON 8A;
- FL 85 for SID BOA 6V;
- FL 110 for SID EKTUK 6A.

REMARK

Initial climb gradients do not take into account “close in” obstacles (trees and antennas) lower than 60 metres (200 ft), MOC included, above DER elevation (see ICAO DOC.8168-OPS/611 Vol. II, Part II, Chapter 2, Paragraph 3.2.4).

NOISE ABATEMENT PROCEDURES RWY 13

See AD 2 Table 21 “NOISE ABATEMENT PROCEDURES”

INITIAL CLIMB PROCEDURES RWY 13

After take-off, as soon as practicable, turn right on TR 139° and at 5NM RIM TACAN, to be crossed at 1500 ft or above, then if cleared via:

- a) SID AMLON 8B: turn left until joining ARC 8NM RIM TACAN, then proceed along the assigned SID;
- b) SID ANC 7B: turn left on TR 086° until joining RDL 121 RIM VOR and proceed along the assigned SID;
- c) SID BOA 6Z and EKTUK 6B: turn left (IAS MAX 210 kt during turn) on TR 262° (RDL 082 RIM VOR) or TR 281° (RDL 101 RIM VOR) for aircraft CAT A/B bound to RIM VORTAC, to be crossed at 4000 ft or above, then leave RIM VOR on RDL 269 until 12NM RIM TACAN, to be crossed at 4500 ft or above, then proceed along the assigned SID.

Minimum climb gradient:

340 ft/NM (5.6%) until leaving 4000 ft, due to obstacles (in turning area) and ATC reasons.

REMARK

Initial climb gradient does not take into account “close in” obstacles (trees and antennas) lower than 60 metres (200 ft), MOC included, above DER elevation (see ICAO DOC.8168-OPS/611 Vol. II, Part II, Chapter 2, Paragraph 3.2.4).

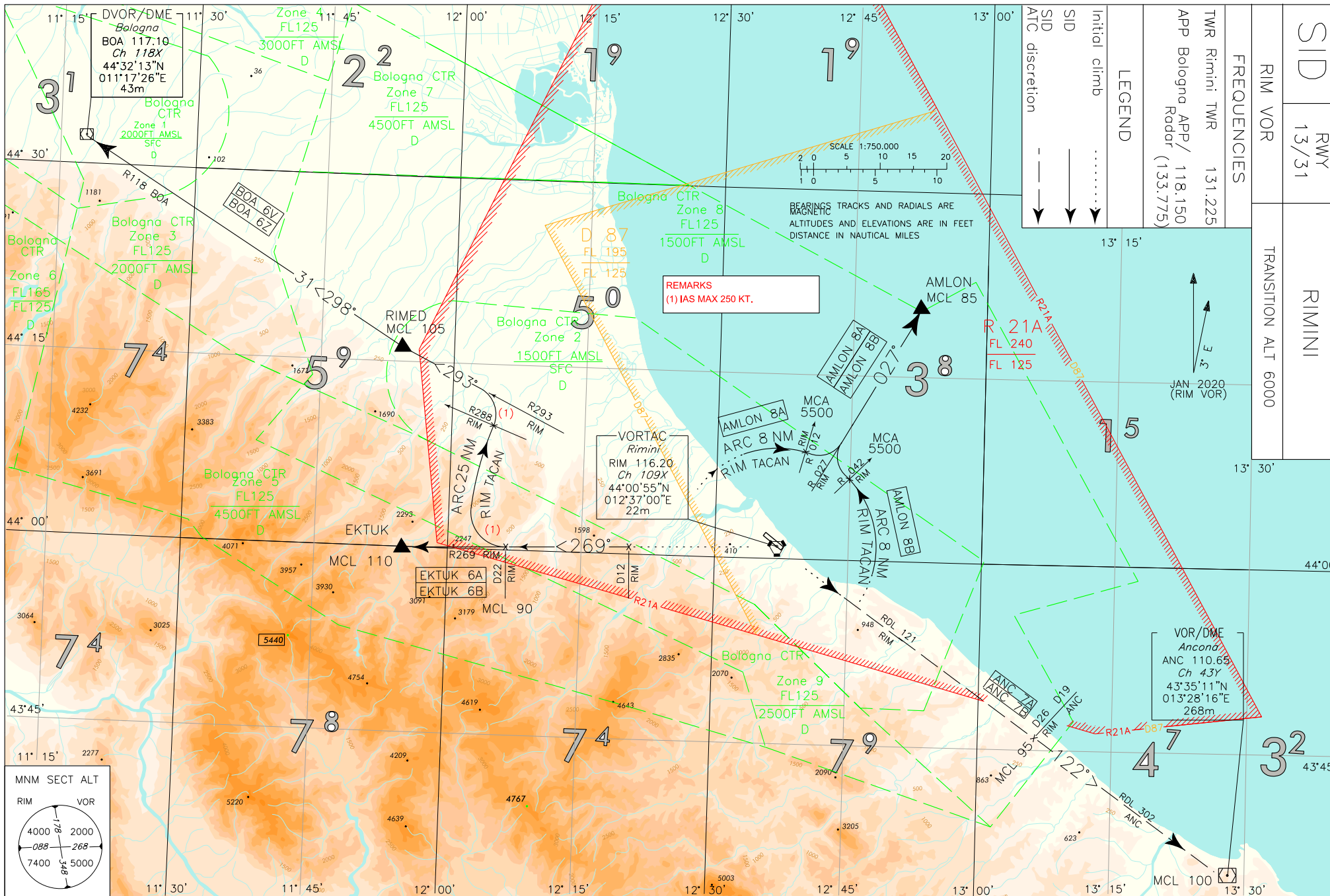
Intenzionalmente bianca

Intentionally left blank

CHANGE: DME 'ANC' ANTENNA ELEVATION UPDATED

ENAV - Roma

AIRAC effective date 15 JUL 2021 (A6/21)

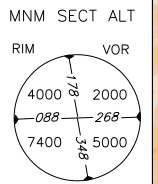


SID		RWY		RIMINI	
13/31					
RIM VOR		TRANSITION ALT 6000			
FREQUENCIES					
TWR Rimini TWR	131.225				
APP Bologna APP/ Radar (133.775)	118.150				
LEGEND					
Initial climb				
SID	↓				
ATC discretion	- - -				

REMARKS
(1) IAS MAX 250 KT.

VORTAC
Rimini
RIM 116.20
Ch 109X
44°00'55"N
012°37'00"E
22m

VOR/DME
Ancona
ANC 110.65
Ch 43Y
43°35'11"N
013°28'16"E
268m



AIP - Italia

AD 2 LIPR 6-13

SID DESCRIPTION RWY 13**AMLON 8B**

Proceed on ARC 8NM RIM TACAN and crossing RDL 042 RIM VOR turn right until joining RDL 027 RIM VOR bound to AMLON.

MCA/MCL: INT ARC 8NM RIM TACAN/RDL 042 RIM VOR 5500 FT; AMLON FL 85

ANC 7B (ATC discretion)

Proceed on RDL 121 RIM VOR (RDL 302 ANC VOR) bound to ANC VOR/DME.

MCL: RDL 121/26NM RIM VORTAC (RDL 302/19NM ANC VOR/DME) FL 95; ANC VOR/DME: FL 100

BOA 6Z

Proceed on RDL 269 RIM VOR (TR 269°) until 22NM RIM TACAN, then turn right (IAS MAX 250 kt) until joining ARC 25NM RIM TACAN. Crossing RDL 288 RIM VOR turn left (IAS MAX 250 kt) until joining RDL 293 RIM VOR (TR 293°) bound to RIMED, then proceed on RDL 118 BOA VOR (TR 298°) bound to BOA VOR.

MCA/MCL: RDL 269/22NM RIM VORTAC: FL90; RIMED: FL 105

EKTUK 6B

Proceed on RDL 269 RIM VOR (TR 269°) bound to EKTUK.

MCL: RDL 269/22NM RIM VORTAC: FL 90; EKTUK: FL 110

SID DESCRIPTION RWY 31**AMLON 8A**

Proceed on ARC 8NM RIM TACAN and crossing RDL 012 RIM VOR turn left until joining RDL 027 RIM VOR bound to AMLON.

MCA/MCL: INT ARC 8NM RIM TACAN/RDL 012 RIM VOR 5500 FT; AMLON FL 85

ANC 7A (ATC discretion)

Proceed on RDL 121 RIM VOR (RDL 302 ANC VOR) bound to ANC VOR/DME.

MCL: RDL 121/26NM RIM VORTAC (RDL 302/19NM ANC VOR/DME) FL 95; ANC VOR/DME FL 100

BOA 6V

Proceed on RDL 269 RIM VOR (TR 269°) until 22NM RIM TACAN, then turn right (IAS MAX 250 kt) until joining ARC 25NM RIM TACAN. Crossing RDL 288 RIM VOR turn left (IAS MAX 250 kt) until joining RDL 293 RIM VOR (TR 293°) bound to RIMED, then proceed on RDL 118 BOA VOR (TR 298°) bound to BOA VOR.

MCA/MCL: RDL 269/22NM RIM VORTAC: FL90; RIMED: FL 105

EKTUK 6A

Proceed on RDL 269 RIM VOR (TR 269°) bound to EKTUK.

MCL: RDL 269/22NM RIM VORTAC: FL 90; EKTUK: FL 110

Intenzionalmente bianca

Intentionally left blank