

SCALE 1:250.000



FIS Padova Information 126.425 / 124.150  
 APP Bologna APP 118.150 (133.775)  
 APP Bologna Radar 118.150 (133.775)  
 TWR Rimini TWR 131.225

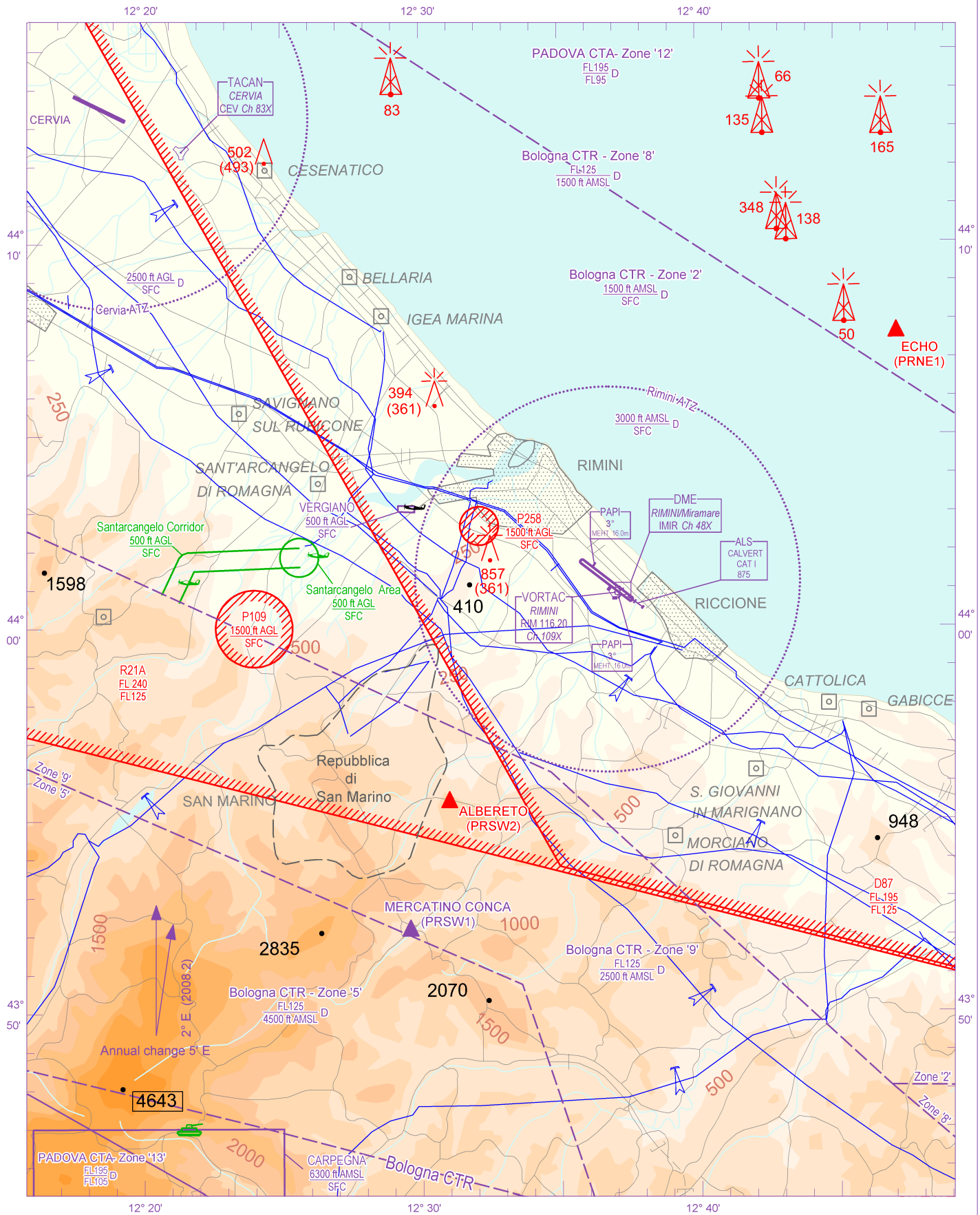
AD ELEV

41

L  
I  
P  
R

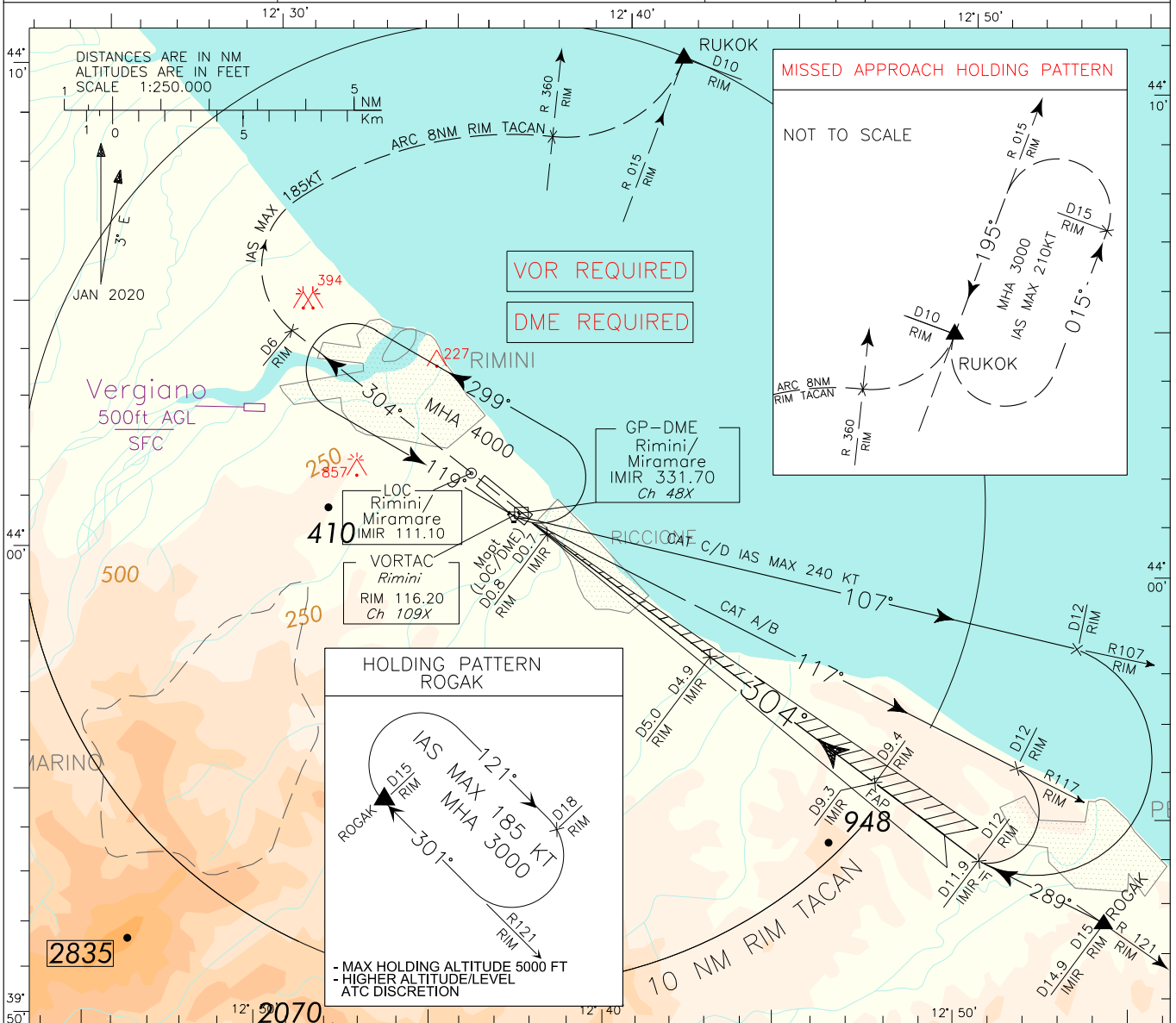
RIMINI/MIRAMARE

CHANGE: DME 'RIMN' ID CHANGE IN 'IMIR' AND NEW CHARACTERISTICS; UPDATED CHART



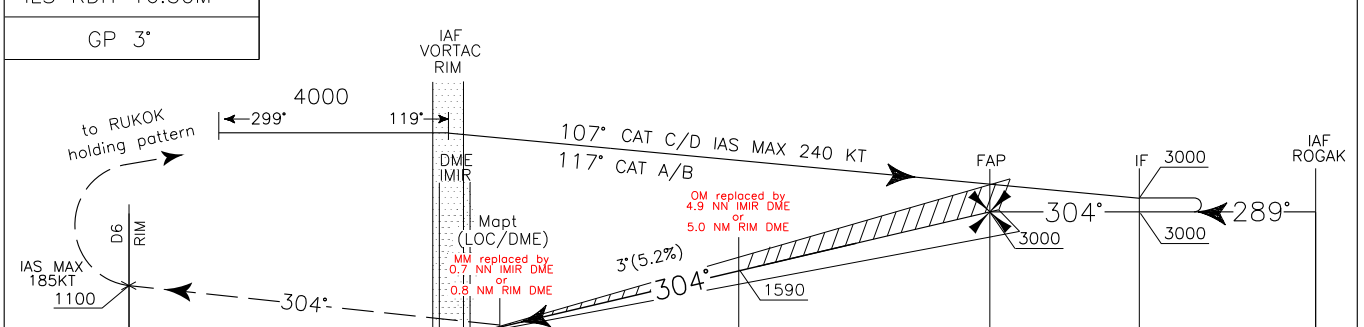
AIRSPACE CLASSIFICATION See AIP ENR 1.4	REMARK	WARNING
TRANSITION ALT 6000 FT		
ELEV AND ALT IN FT IF NOT OTHERWISE INDICATED		

APP	Bologna APP/Radar	118.150 (133.775)	AD ELEV	41	LIPR	RIMINI
TWR	Rimini TWR	131.225				ILS - Z RWY 31



CHANGE: ILS SYSTEM UPDATED. RDH UPDATED.

TRANSITION ALT 6000 MISSED APPROACH: Proceed on TR 304° climbing to 3000FT. Cross 6NM RIM TACAN at 1100 ft or above then turn right (IAS MAX 185 KT) to join and follow ARC 8NM RIM TACAN. Crossing RDL 360 RIM VOR, turn left bound to RUKOK. Hold as published.



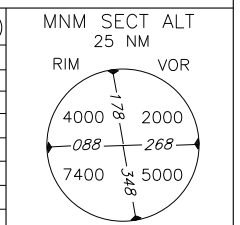
IMIR DME (NM)	THR ELEV 39	D0	D1	D2	D3	D4	D5	D6	D7	D8	D9	D10	D11	D12	D13	D14	D15
RIM VORTAC (NM)		D0	D1	D2	D3	D4	D5	D6	D7	D8	D9	D10	D11	D12	D13	D14	D15

OCA (OCH)	A	B	C	D
STRAIGHT IN APPROACH	ILS 280 (241)	292 (253)	300 (261)	311 (272)
	LOC/DME	650 (609)		
CIRCLING (1)	770 (729)		870 (829)	

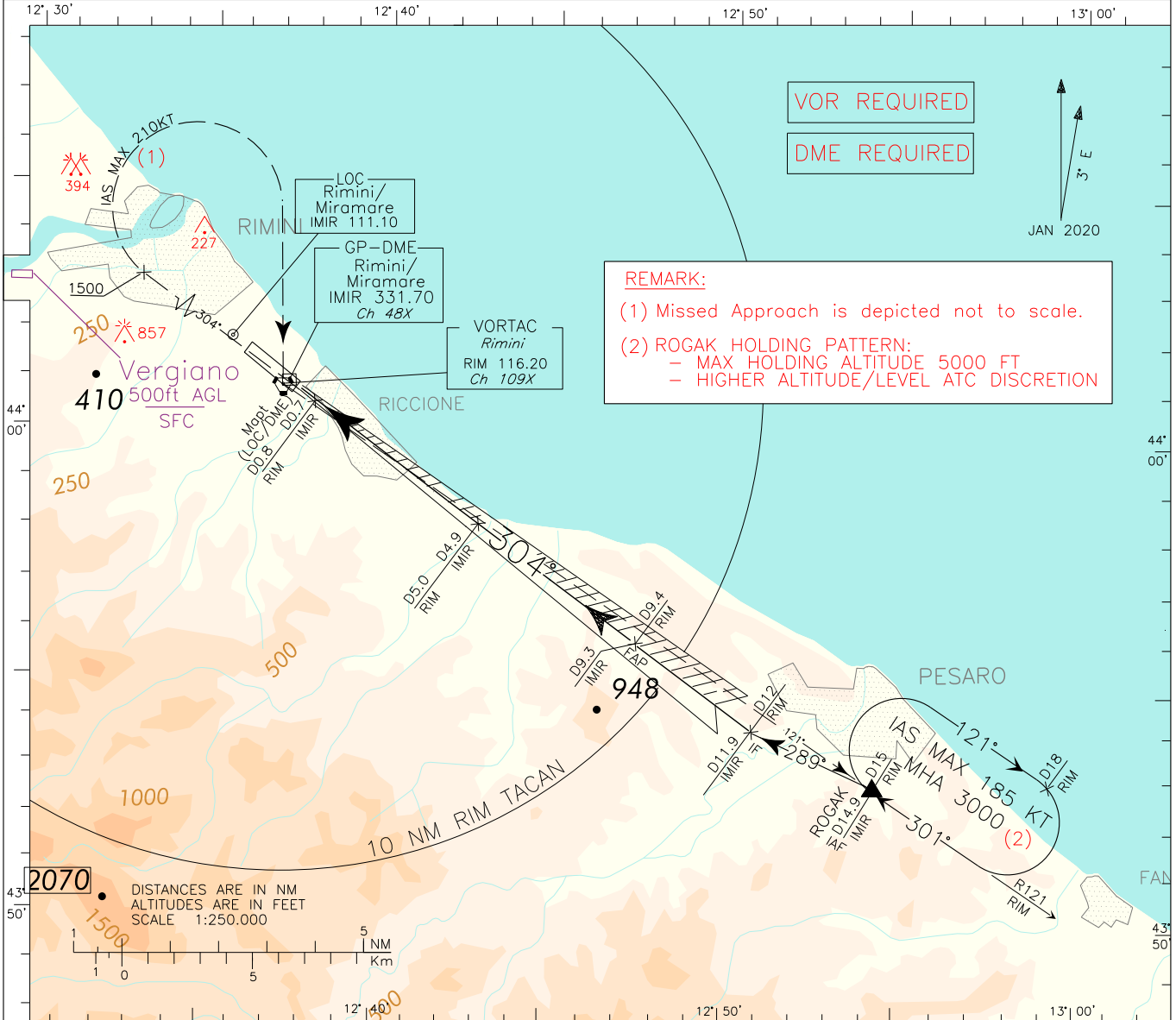
REMARK: (1)  
Circling procedure allowed East of RWY only.

NOT ALLOWED

GS	FT/MIN	IMIR DME	ALT (HGT)
70	372	D 9	2900(2861)
90	478	D 8	2585(2546)
110	584	D 7	2265(2226)
130	690	D 6	1945(1906)
150	797	D 5	1630(1591)
170	903	D 4	1310(1271)
190	1009	D 3	990 (951)
210	1115	D 2	675 (636)



APP	Bologna APP/Radar	118.150 (133.775)	AD ELEV	41	LIPR	RIMINI
TWR	Rimini TWR	131.225				ILS – Y

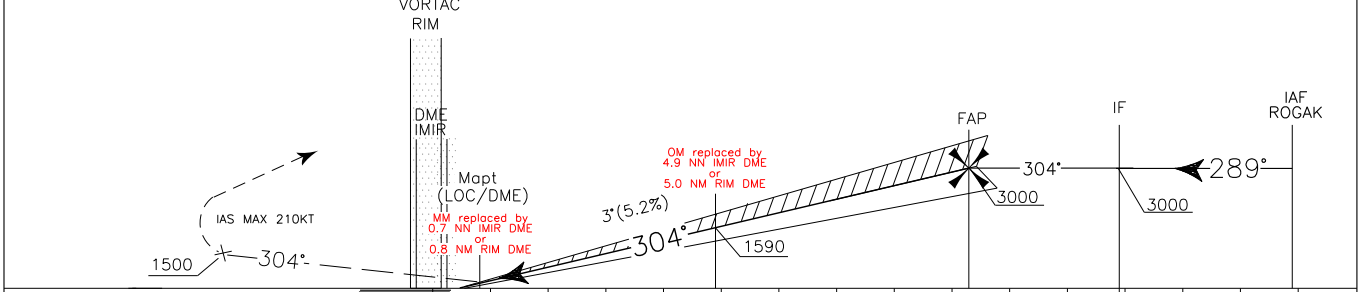


CHANGE: ILS SYSTEM UPDATED. RDH VALUE UPDATED

TRANSITION ALT 6000 MISSED APPROACH: Proceed on TR 304° climbing to 3000FT. Passing 1500 FT turn right (IAS MAX 210KT) to RIM VORTAC, to leave on RDL 121 RIM VOR (TR 121°) inbound ROGAK holding pattern. Hold as published.

ILS RDH 16.5M

GP 3°

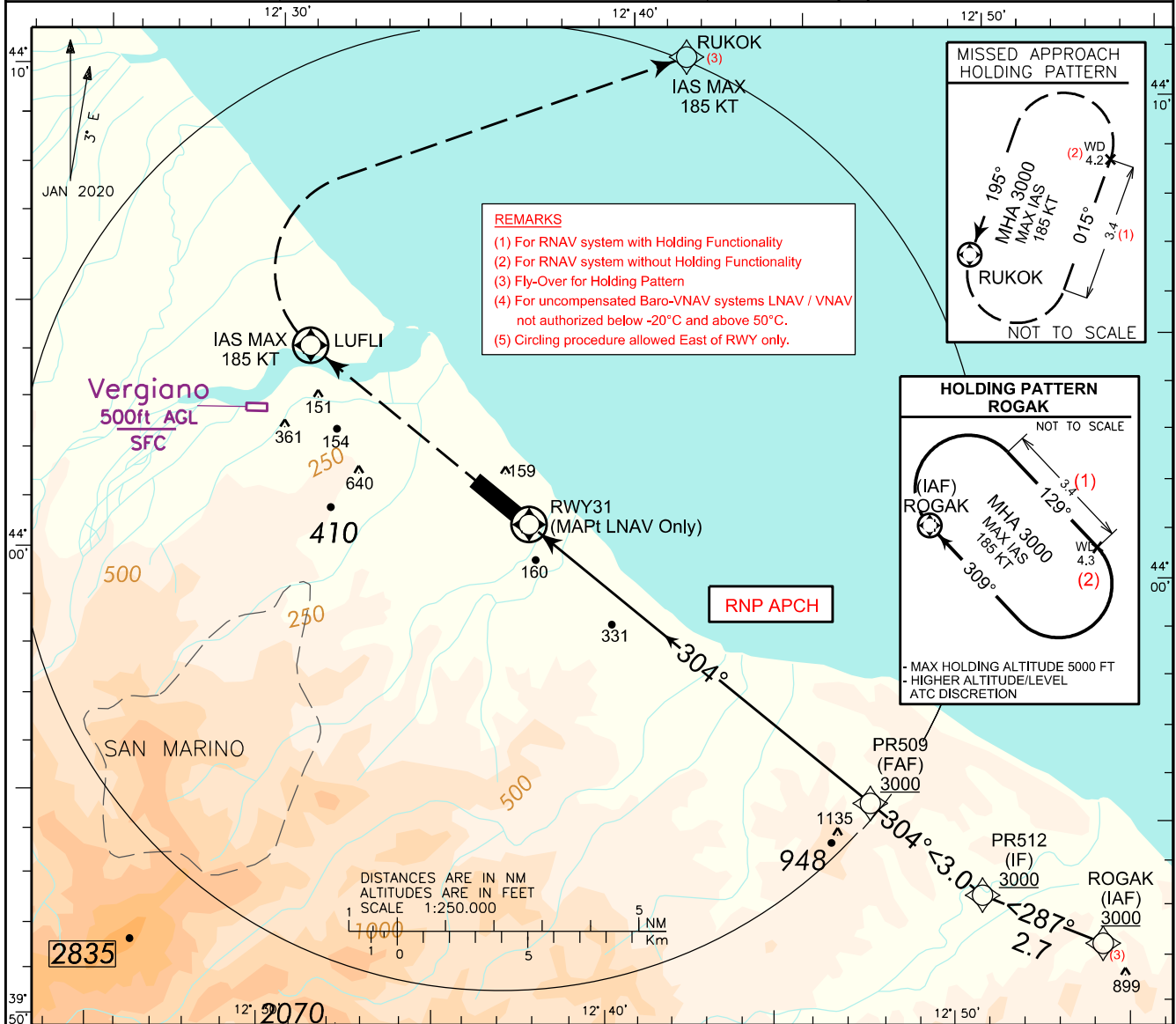


IMIR DME (NM)	THR ELEV 39	D0	D1	D2	D3	D4	D5	D6	D7	D8	D9	D10	D11	D12	D13	D14	D15
---------------	-------------	----	----	----	----	----	----	----	----	----	----	-----	-----	-----	-----	-----	-----

RIM VORTAC (NM)	D0	D1	D2	D3	D4	D5	D6	D7	D8	D9	D10	D11	D12	D13	D14	D15
-----------------	----	----	----	----	----	----	----	----	----	----	-----	-----	-----	-----	-----	-----

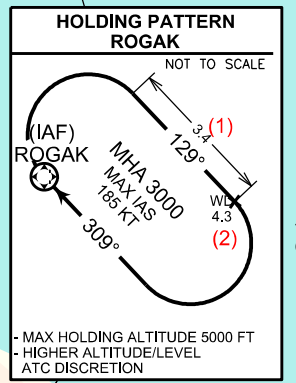
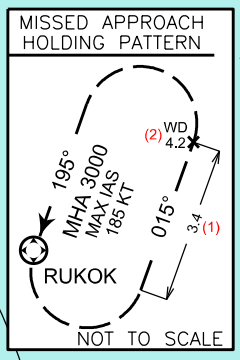
STRAIGHT IN APPROACH	OCA (OCH)				REMARK (2): Circling procedure allowed East of RWY only.	GS	FT/MIN	IMIR DME	ALT (HGT)	MNM SECT ALT 25 NM
	A	B	C	D						
ILS	280 (241)	292 (253)	300 (261)	311 (272)	NOT ALLOWED	70	372	D 9	2900(2861)	RIM VOR 4000 178 2000 088 268 7400 348 5000
	LOC/DME	650 (609)				90	478	D 8	2585(2546)	
						110	584	D 7	2265(2226)	
						130	690	D 6	1945(1906)	
						150	797	D 5	1630(1591)	
						170	903	D 4	1310(1271)	
CIRCLING(2)	770 (729)		870 (829)			190	1009	D 3	990 (951)	
						210	1115	D 2	675 (636)	

EGNOS CH 77330 E31A	APP	Bologna APP/Radar	118.150 (133.775)	AD ELEV	LIPR RIMINI RNP RWY 31
	TWR	Rimini TWR	131.225	41	

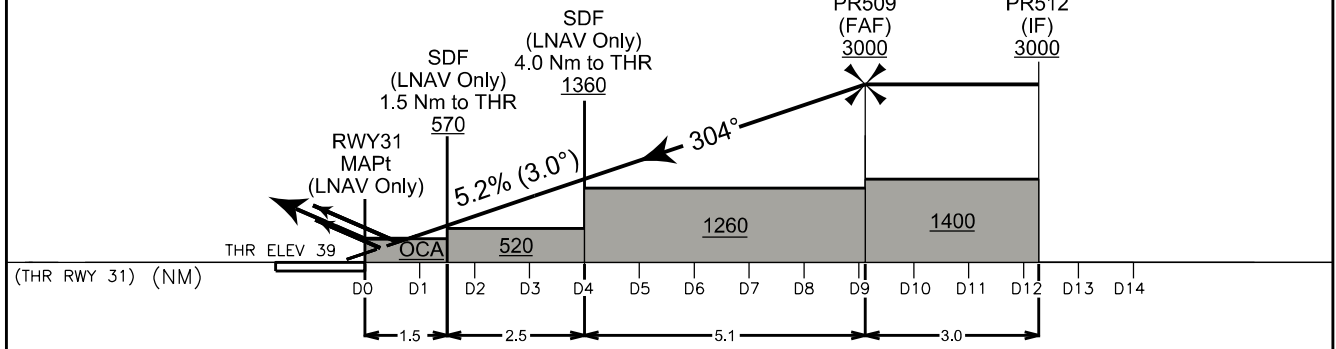


**REMARKS**

- (1) For RNAV system with Holding Functionality
- (2) For RNAV system without Holding Functionality
- (3) Fly-Over for Holding Pattern
- (4) For uncompensated Baro-VNAV systems LNAV / VNAV not authorized below -20°C and above 50°C.
- (5) Circling procedure allowed East of RWY only.



TRANSITION ALT 6000	MISSED APPROACH: Climbing to 3000 FT, proceed straight ahead direct to LUFLI. Turn Right (IAS MAX 185 Kt) direct to RUKOK. Hold as published.
TCH 17.50M	
VPA 3°	



STRAIGHT IN APPROACH	OCA (OCH)				REMARK: (5) Circling procedure allowed East of RWY only.	GS			MNM SECT ALT 25 NM ARP	
	A	B	C	D		FT/MIN	THR 31	ALT (HGT)		
LPV	280 (241)	292 (253)	300 (261)	311 (272)	NOT ALLOWED	70	D 8	2643 (2604)	6500	
	LNAV/VNAV	390 (351)	400 (361)	410 (371)		440 (401)	90	D 7		2325 (2286)
		LNAV	450 (409)			110	D 6	2007 (1968)		
CIRCLING (5)	700 (659)		940 (899)	1100 (1059)		130	D 5	1688 (1649)		
						150	D 4	1370 (1331)		
						170	D 3	1052 (1013)		
					190	D 2	733 (694)			
				210	D 1	415 (376)				

**TABULAR DESCRIPTION****RNP RWY 31**

Serial Number	Path Terminator	Waypoint Identifier	Fly Over	Course °M (°T)	Magnetic Variation	Distance (NM)	Turn Direction	Altitude (ft)	Speed Limit (kt)	VPA/TCH	Navigation Specification
010	IF	ROGAK	N	-	-	-	-	+3000	-	-	RNP APCH
020	TF	PR512	N	287 (290.3)	-	2.7	-	+3000	-	-	RNP APCH
030	TF	PR509	N	304 (307.7)	-	3.0	-	+3000	-	-	RNP APCH
040	TF	RWY31	Y	304 (307.7)	-	9.1	-	+96	-	-3.0/ 57	RNP APCH
020	DF	LUFLI	Y	-	-	-	-	-	-185	-	RNP APCH
060	DF	RUKOK	N	-	-	-	R	+3000	-185	-	RNP APCH

Path Terminator	Waypoint Identifier	Inbound Course °M (°T)	Leg Distance NM (1)	Timing(min./Waypoint Distance (NM) (2)	Turn Direction	Minimum Altitude (ft)	Maximum Altitude (ft)	Speed Limit (kt)	Magnetic Variation (°)	Navigation Specification
HM	ROGAK	309 (312.4)	3.4	-/4.3	R	3000	5000 (3)	-185	+3.4	RNAV 1
HM	RUKOK	195 (198.0)	3.4	-/4.2	L	3000	-	-185	+3.4	RNAV 1

- (1) RNAV system with holding functionality  
(2) RNAV system without holding functionality  
(3) Higher altitude/level ATC discretion.

**WAYPOINT LIST****RNP RWY 31**

Waypoint Identifier	Coordinates
PR512	N 43°53'25.1" E 012°50'41.3"
PR509	N 43°55'15.2" E 012°47'24.3"
RWY31	N 44°00'49.43" - E 012°37'24.61"

**SBAS FAS DATA BLOCK LIPR RNP RWY31**

Operation Type	0
SBAS Provider	1 (EGNOS)
Airport Identifier	LIPR
Runway	31
Runway Letter	0 (None)
Approach Performance Designator	0
Route Indicator	
Reference Path Data Selector	0
Reference Path Identifier	E31A
LTP/FTP Latitude	440049.4345N
LTP/FTP Longitude	0123724.6070E
LTP/FTP Ellipsoidal Height (metres)	52.1
FPAP Latitude	440145.2825N
Delta FPAP Latitude (seconds)	55.8480
FPAP Longitude	0123544.4640E
Delta FPAP Longitude (seconds)	-100.1430
Threshold Crossing Height	17.50
TCH Units Selector	1 (meters)
Glidepath Angle (degrees)	3.00
Course Width (metres)	105.00
Length Offset (metres)	0
HAL (metres)	40.0
VAL (metres)	35.0

**Output Data**

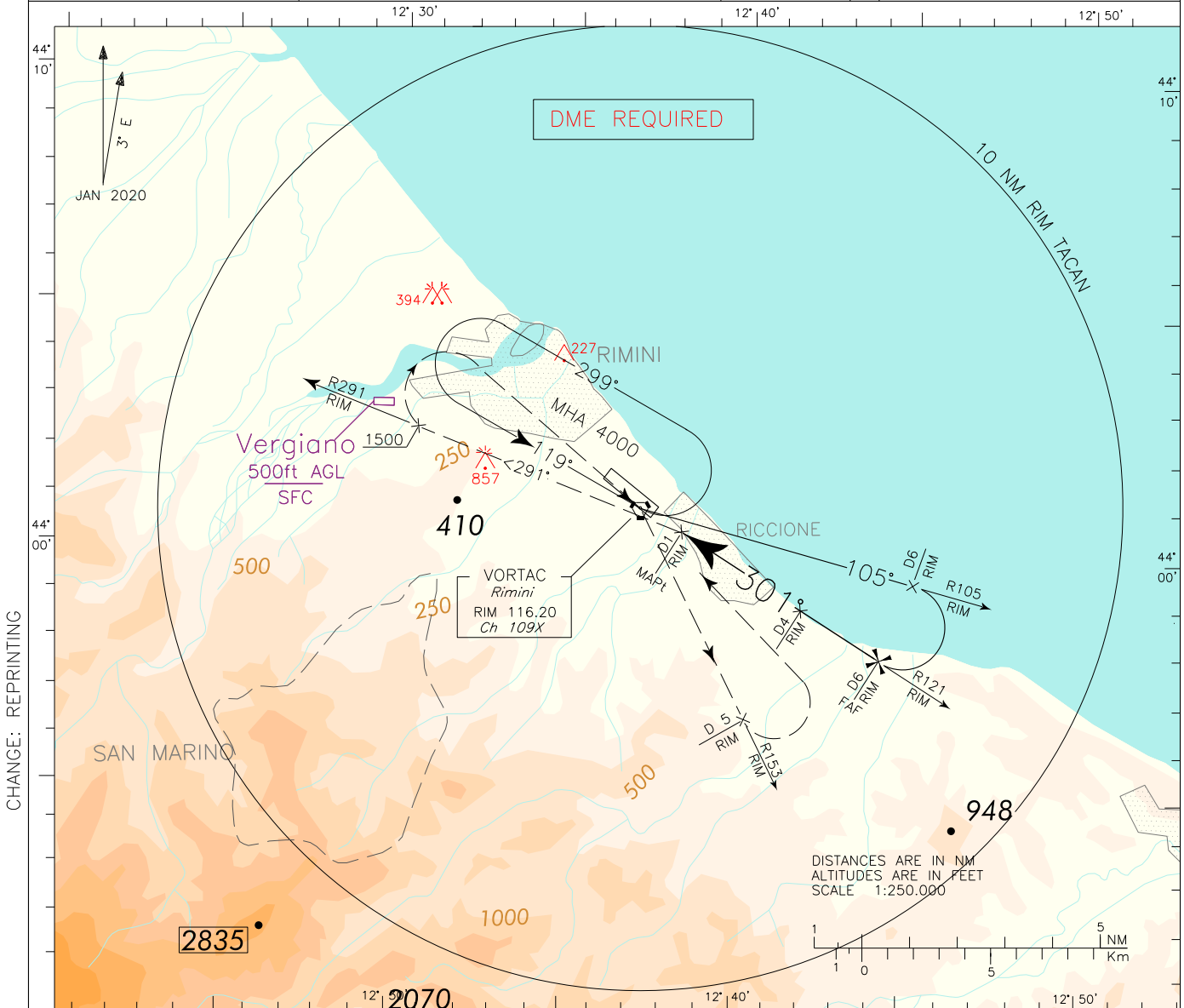
Data Block	10 12 10 09 0C 1F 00 00 01 31 33 05 35 7E E3 12 FE DB 6A 05 09 16 50 B4 01 A2 F1 FC 5E 81 2C 01 64 00 C8 AF BD B6 92 66
Calculated CRC Value	BDB69266

**Required Additional Data (not CRC wrapped)**

Parameters	Values
ICAO Code	LI
LTP/FTP Orthometric Height (metres)	11.9



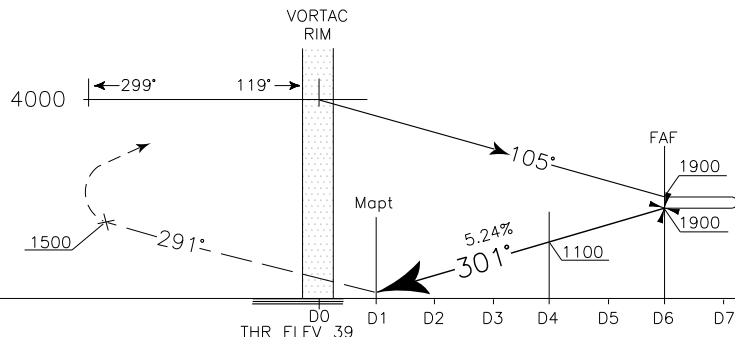
APP	Bologna APP/Radar	118.150 (133.775)	AD ELEV	41	L I P R	RIMINI (CAT. A-B)
TWR	Rimini TWR	131.225				VOR – Z RWY 31



CHANGE: REPRINTING

TRANSITION ALT 6000

**MISSED APPROACH:** At D1 RIM TACAN climb to 4000 FT and, as soon as practicable, turn left to join RDL 291 RIM VORTAC. Passing 1500 FT turn right to RIM VORTAC, to leave on RDL 153. At D5 RIM TACAN turn left to RIM VORTAC holding pattern to reach at 4000 FT.



RIM VORTAC (NM)

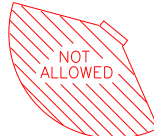
THR ELEV 39 D0 D1 D2 D3 D4 D5 D6 D7 D8 D9 D10

THR 31 (NM)

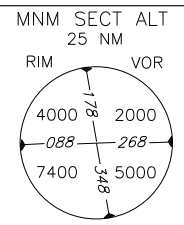
0 1 2 3 4 5 6 7 8 9 10 11

OCA (OCH)		A	B	C	D
STRAIGHT IN APPROACH	VORDME	680 (639)			
	CIRCLING	1160 (1119)			

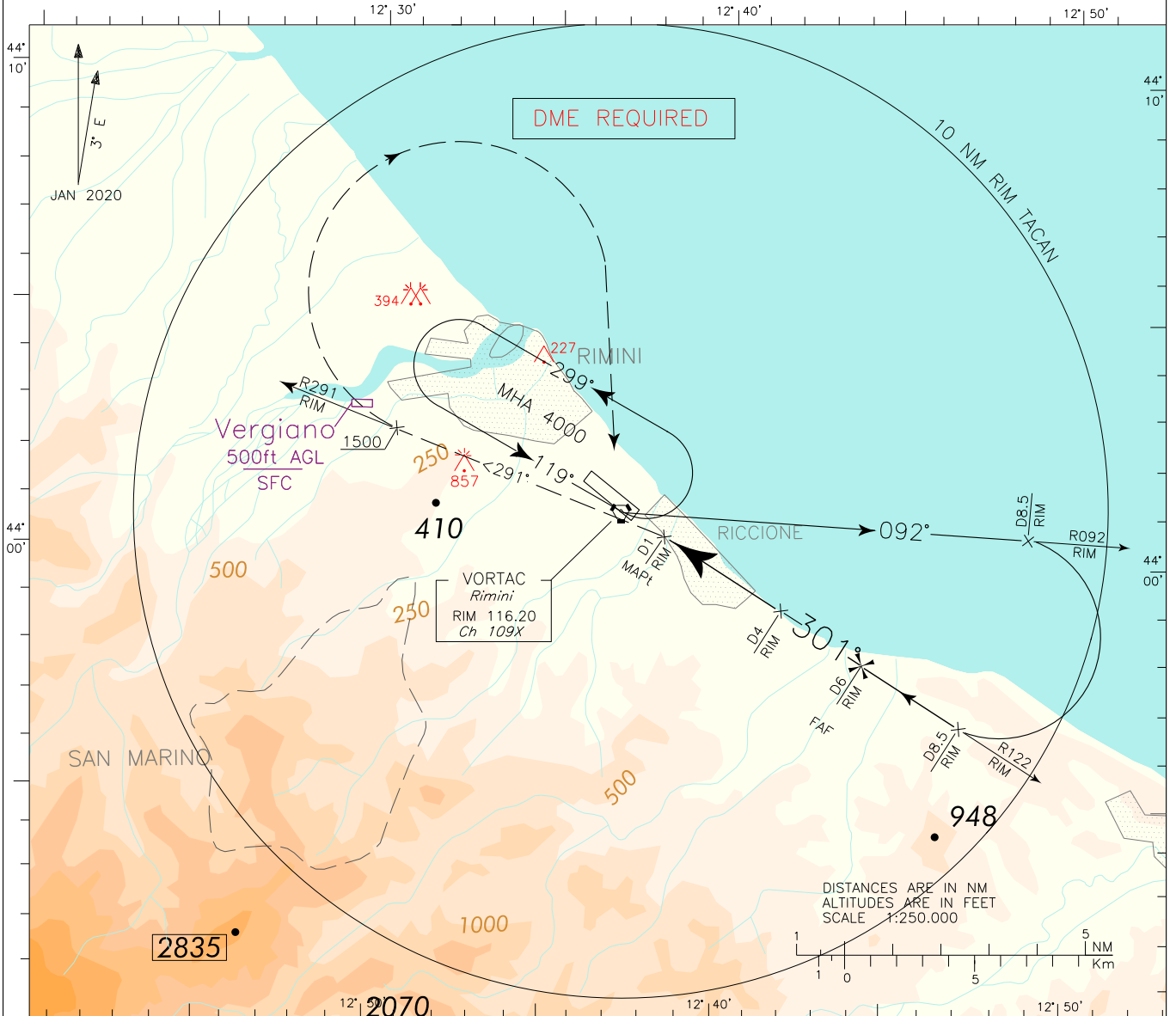
**REMARK:**  
Circling procedure allowed East of RWY only.



GS	FT PER MIN	RIM TACAN	ALT (HGT)
70	372	D 6	1900(1859)
90	478	D 5	1590(1549)
110	584	D 4	1270(1229)
130	690	D 3	960 (919)
150	797		



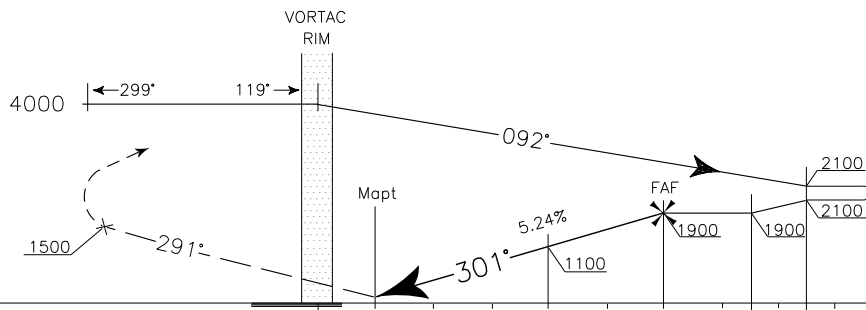
APP	Bologna APP/Radar	118.150 (133.775)	AD ELEV	41	LIPR	RIMINI
TWR	Rimini TWR	131.225				(CAT. C-D) VOR – Z RWY 31



CHANGE: REPRINTING

TRANSITION ALT 6000

MISSED APPROACH: At D1 RIM TACAN climb to 4000 FT and, as soon as practicable, turn left to join RDL 291 RIM VOR. Passing 1500 FT turn right to RIM VORTAC holding pattern to reach at 4000 FT.



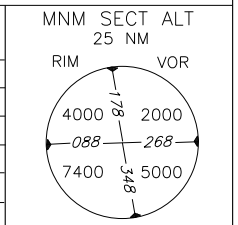
RIM VORTAC (NM)	D0	D1	D2	D3	D4	D5	D6	D7	D7.5	D8	D8.5	D9	D10
THR 31 (NM)	0	1	2	3	4	5	6	7	8	9	10	11	

OCA (OCH)	A	B	C	D
STRAIGHT IN APPROACH	VORDME		680 (639)	
CIRCLING			1260 (1219)	

REMARK: Circling procedure allowed East of RWY only.

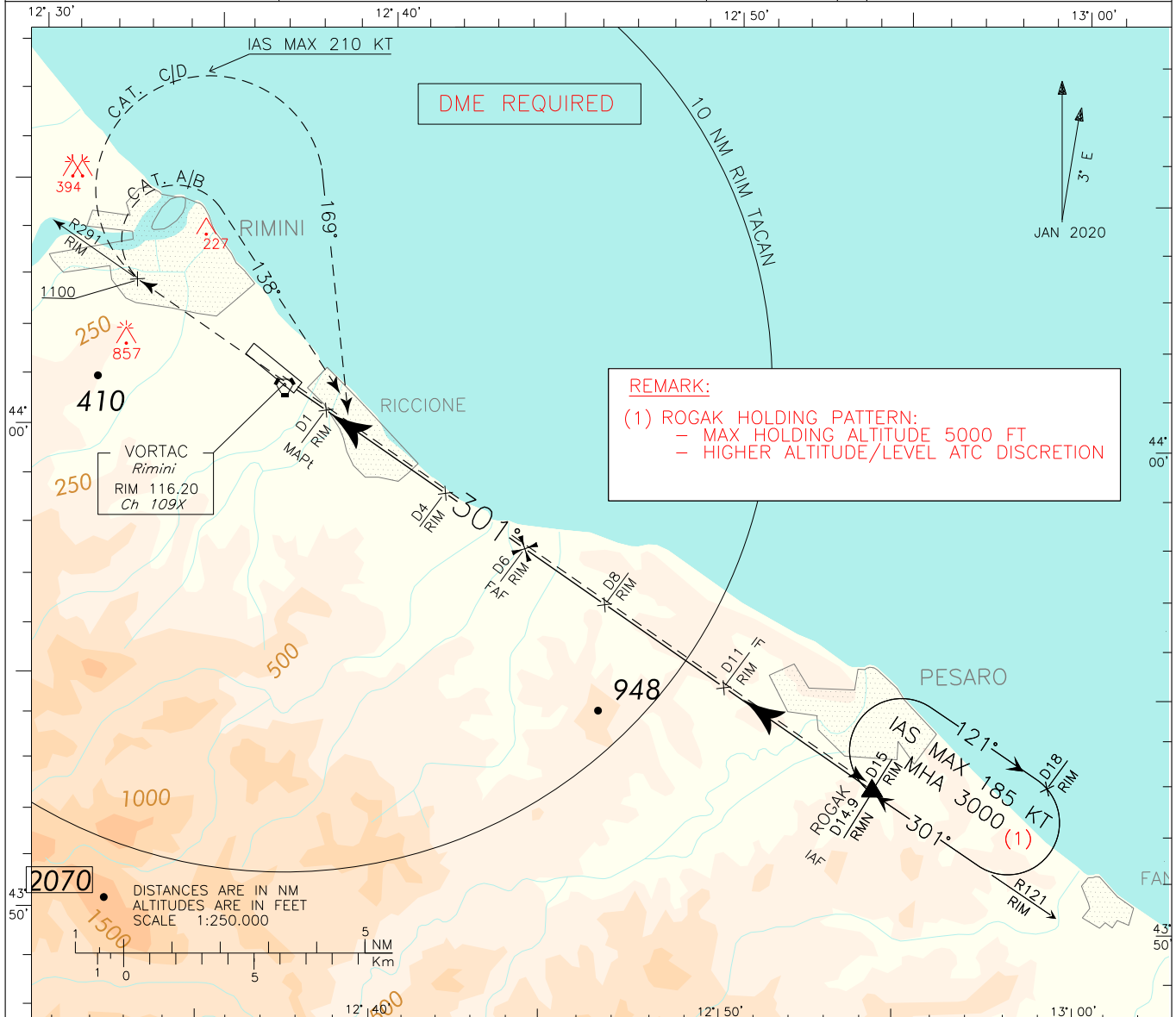
**NOT ALLOWED**

GS	FT PER MIN	RIM TACAN	ALT (HGT)
110	584	D 6	1900(1859)
130	690	D 5	1590(1549)
150	797	D 4	1270(1229)
170	903	D 3	960 (919)
190	1009		
210	1115		
230	1221		



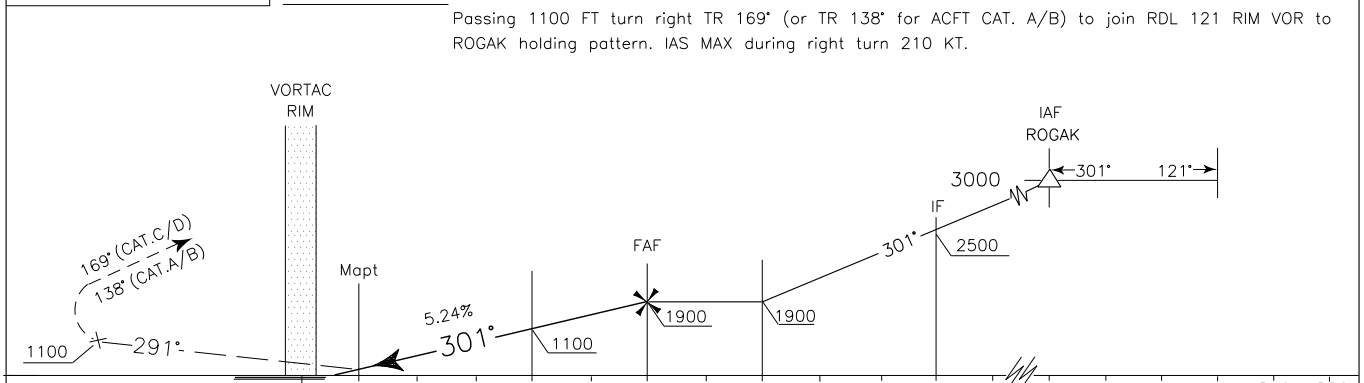


APP	Bologna APP/Radar	118.150 (133.775)	AD ELEV	41	LIPR	RIMINI
TWR	Rimini TWR	131.225				VOR - Y RWY 31



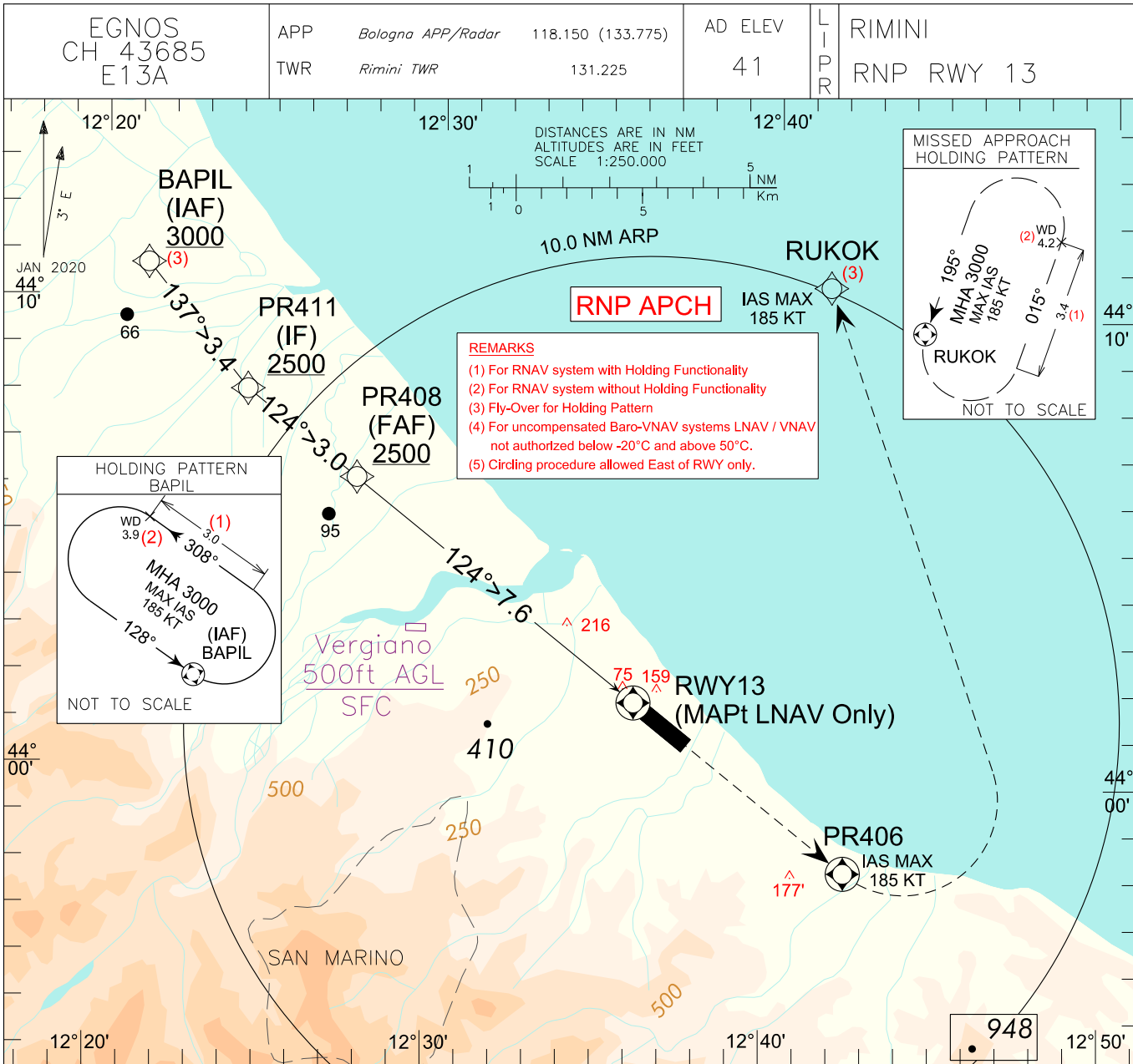
CHANGE: HOLDING ROGAK MODIFIED.

TRANSITION ALT 6000 MISSED APPROACH: At D1 RIM TACAN climb to 3000 FT and, as soon as practicable, turn left to join RDL 291 RIM VOR. Passing 1100 FT turn right TR 169° (or TR 138° for ACFT CAT. A/B) to join RDL 121 RIM VOR to ROGAK holding pattern. IAS MAX during right turn 210 KT.



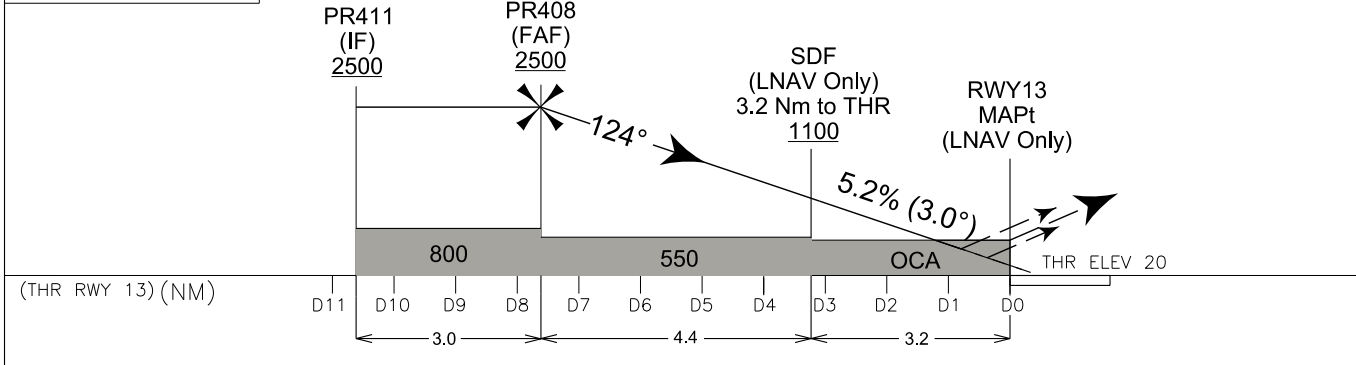
RIM VORTAC (NM)	D0	D1	D2	D3	D4	D5	D6	D7	D8	D9	D10	D11	D12	D15	D16	D17	D18	D19	D20
THR ELEV 39	0	1	2	3	4	5	6	7	8	9	10	11	12						

OCA (OCH)		A	B	C	D	REMARK: Circling procedure allowed East of RWY only. 	GS	FT/MIN	RIM TACAN	ALT (HGT)	MNM SECT ALT 25 NM RIM VOR 
STRAIGHT IN APPROACH	VORDME	680 (639)					70	372	D 6	1900(1859)	
							90	478	D 5	1590(1549)	
							110	584	D 4	1270(1229)	
CIRCLING		770 (729)		870 (829)		130	690	D 3	960 (919)		
						150	797				
						170	903				
						190	1009				
						210	1115				



CHANGE : LPV MINIMA IMPLEMENTED

TRANSITION ALT 6000	<b>MISSED APPROACH:</b> Climbing to 3000 FT, proceed straight ahead direct to PR406. Turn Left (IAS MAX 185 Kt) direct to RUKOK. Hold as published.
TCH 15M	
VPA 3°	



STRAIGHT IN APPROACH	OCA (OCH)				REMARK: (5) Circling procedure allowed East of RWY only.	CS	FT/MIN	THR 13	ALT (HGT)	MMN SECT ALT 25 NM ARP
	A	B	C	D						
LNAV/VNAV	LPV	236 (216)	248 (228)	256 (236)	267 (247)	70	372			6500
	LNAV	410 (390)	420 (400)	430 (410)	440 (420)	90	478	D 7	2299 (2279)	
		500 (480)				110	584	D 6	1980 (1960)	
CIRCLING (5)	650 (609)	700 (659)	910 (869)		130	690	D 5	1662 (1642)		
			150	797	D 4	1344 (1324)				
					170	903	D 3	1025 (1005)		
					190	1009	D 2	707 (687)		
					210	1115	D 1	388 (368)		

## TABULAR DESCRIPTION

### RNP RWY 13

Serial Number	Path Terminator	Waypoint Identifier	Fly Over	Course °M (°T)	Magnetic Variation	Distance (NM)	Turn Direction	Altitude (ft)	Speed Limit (kt)	VPA/TCH	Navigation Specification
010	IF	BAPIL	N	-	-	-	-	+3000	-	-	RNP APCH
020	TF	PR411	N	137 (140.3)	-	3.4	-	+2500	-	-	RNP APCH
030	TF	PR408	N	124 (127.4)	-	3.0	-	+2500	-	-	RNP APCH
040	TF	RWY13	Y	124 (127.6)	-	7.6	-	+70	-	-3.0/ 50	RNP APCH
050	DF	PR406	Y	-	-	-	-	-	185	-	RNP APCH
060	DF	RUKOK	N	-	-	-	L	+3000	185	-	RNP APCH

Path Terminator	Waypoint Identifier	Inbound Course °M (°T)	Leg Distance NM (1)	Timing(min.)/Waypoint Distance (NM) (2)	Turn Direction	Minimum Altitude (ft)	Maximum Altitude (ft)	Speed Limit (kt)	Magnetic Variation (°)	Navigation Specification
HM	BAPIL	128 (131)	3.0	-/3.9	L	+3000	-	185	+3.4	RNAV 1
HM	RUKOK	195 (198.0)	3.4	-/4.2	L	3000	-	185	+3.4	RNAV 1

(1) RNAV system with holding functionality

(2) RNAV system without holding functionality

## WAYPOINT LIST

### RNP RWY 13

Waypoint Identifier	Coordinates
PR411	N 44°08'05.7" - E 012°24'19.2"
PR408	N 44°06'16.2" - E 012°27'37.6"
RWY13	N 44°01'36.49" - E 012°36'00.23"
PR406	N 43°58'04.3" - E 012°42'20.4"

**SBAS FAS DATA BLOCK LIPR RNP RWY13**

Operation Type	0
SBAS Provider	1 (EGNOS)
Airport Identifier	LIPR
Runway	13
Runway Letter	0 (None)
Approach Performance Designator	0
Route Indicator	
Reference Path Data Selector	0
Reference Path Identifier	E13A
LTP/FTP Latitude	440136.4920N
LTP/FTP Longitude	0123600.2330E
LTP/FTP Ellipsoidal Height (metres)	46.3
FPAP Latitude	440044.0145N
Delta FPAP Latitude (seconds)	-52.4775
FPAP Longitude	0123734.3200E
Delta FPAP Longitude (seconds)	94.0870
Threshold Crossing Height	50.0
TCH Units Selector	0 (feet)
Glidepath Angle (degrees)	3.00
Course Width (metres)	105.00
Length Offset (metres)	0
HAL (metres)	40.0
VAL (metres)	35.0

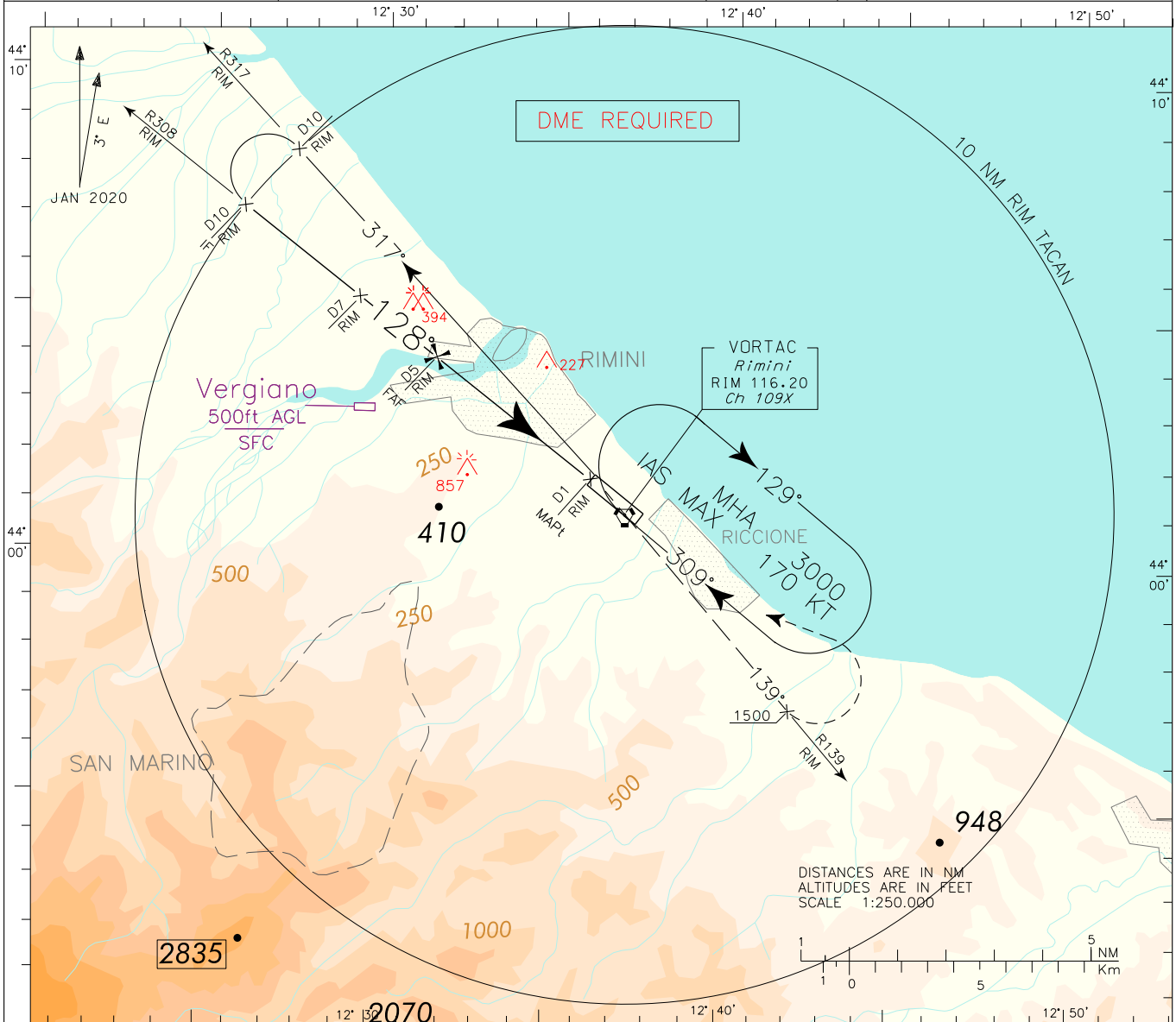
**Output Data**

Data Block	10 12 10 09 0C 0D 00 00 01 33 31 05 D8 ED E4 12 D2 48 68 05 CF 15 05 66 FE 0E DF 02 F4 01 2C 01 64 00 C8 AF 7F C3 13 C1
Calculated CRC Value	7FC313C1

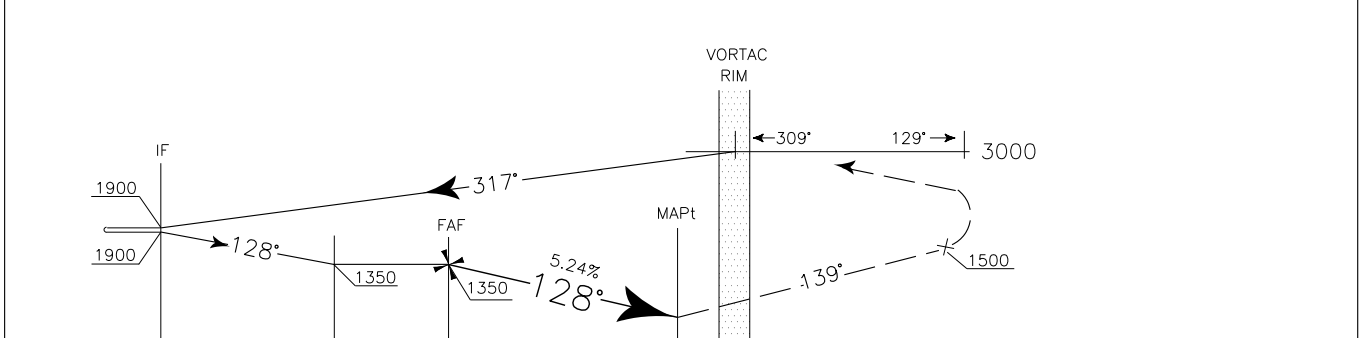
**Required Additional Data (not CRC wrapped)**

Parameters	Values
ICAO Code	LI
LTP/FTP Orthometric Height (metres)	6.2

APP	Bologna APP/Radar	118.150 (133.775)	AD ELEV	41	LIPR	RIMINI (CAT. A-B)
TWR	Rimini TWR	131.225				VOR – Z RWY 13



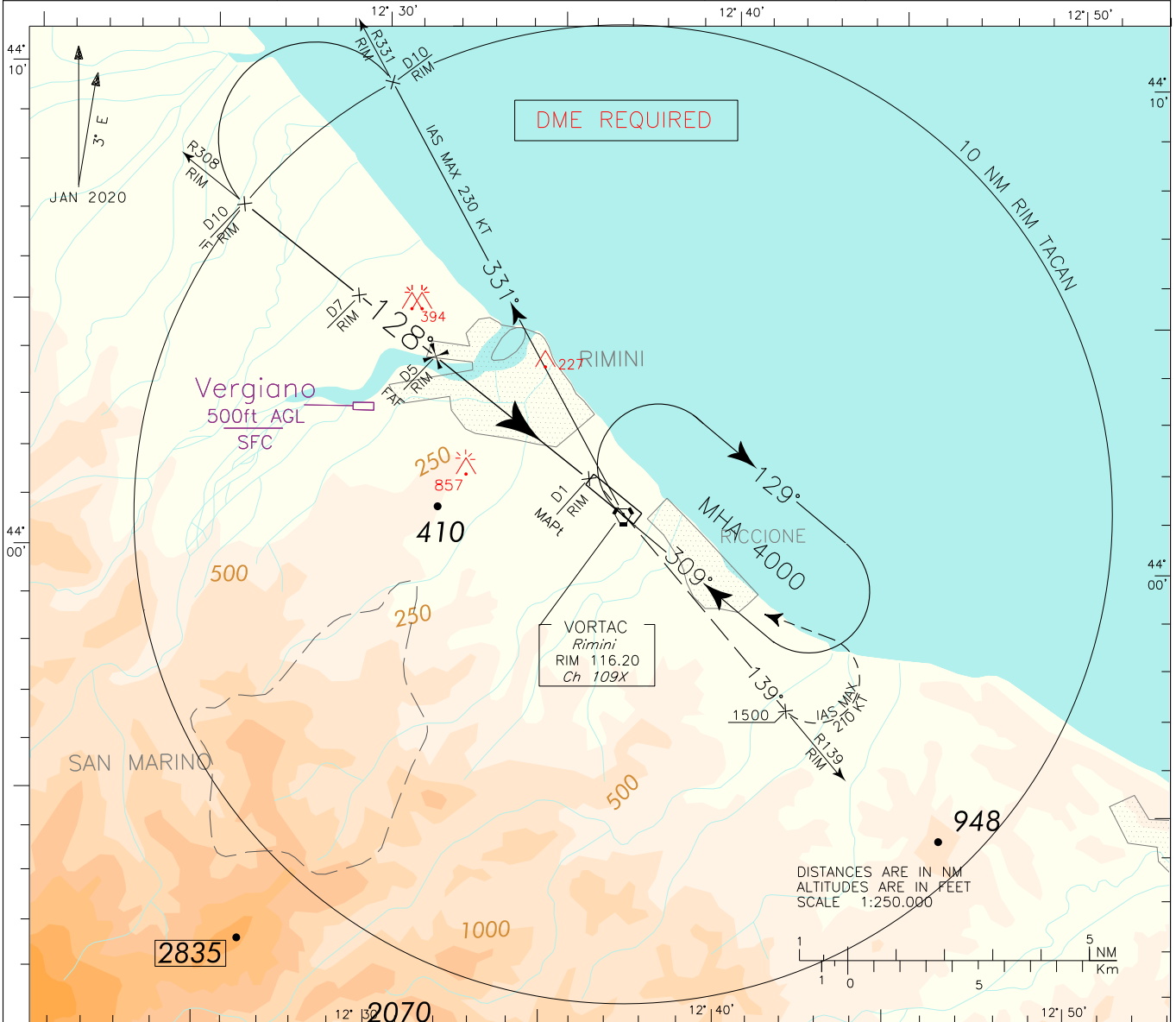
TRANSITION ALT 6000 MISSED APPROACH: At D1 RIM TACAN climb to 3000 FT and, as soon as practicable, turn right to join RDL 139 RIM VOR. Passing 1500 FT turn left bound to RIM VORTAC holding pattern to reach at 3000 FT.



D12	D11	D10	D9	D8	D7	D6	D5	D4	D3	D2	D1	D0	D1	D2	D3	D4	D5	D6	RIM VORTAC (NM)
										THR	ELEV 20								THR 13 (NM)

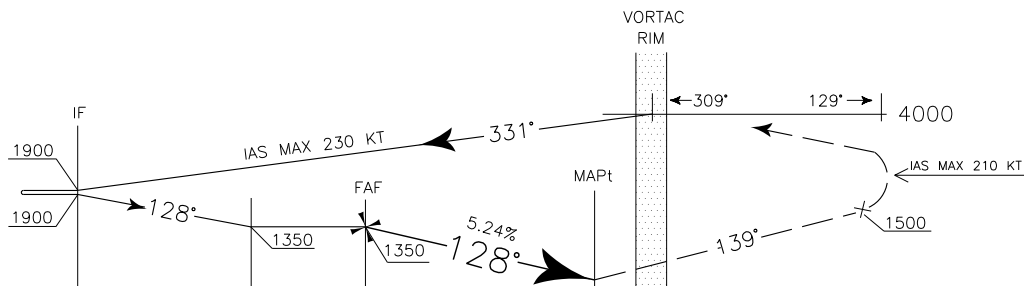
OCA (OCH)		A	B	C	D	REMARK: Circling procedure allowed East of RWY only. 	GS	FT PER MIN	RIM TACAN	ALT (HGT)	MNM SECT ALT 25 NM
STRAIGHT IN APPROACH	VORDME	600 (580)					70	372	D 5	1350(1330)	
							90	478	D 4	1030(1010)	
							110	584	D 3	710 (690)	
							130	690			
CIRCLING		770 (729)				150	797				

APP	Bologna APP/Radar	118.150 (133.775)	AD ELEV	41	LIPR	RIMINI (CAT. C-D)
TWR	Rimini TWR	131.225				VOR – Z RWY 13



TRANSITION ALT 6000 MISSED APPROACH: At D1 RIM TACAN climb to 4000 FT and, as soon as practicable, turn right to join RDL 139 RIM VOR.

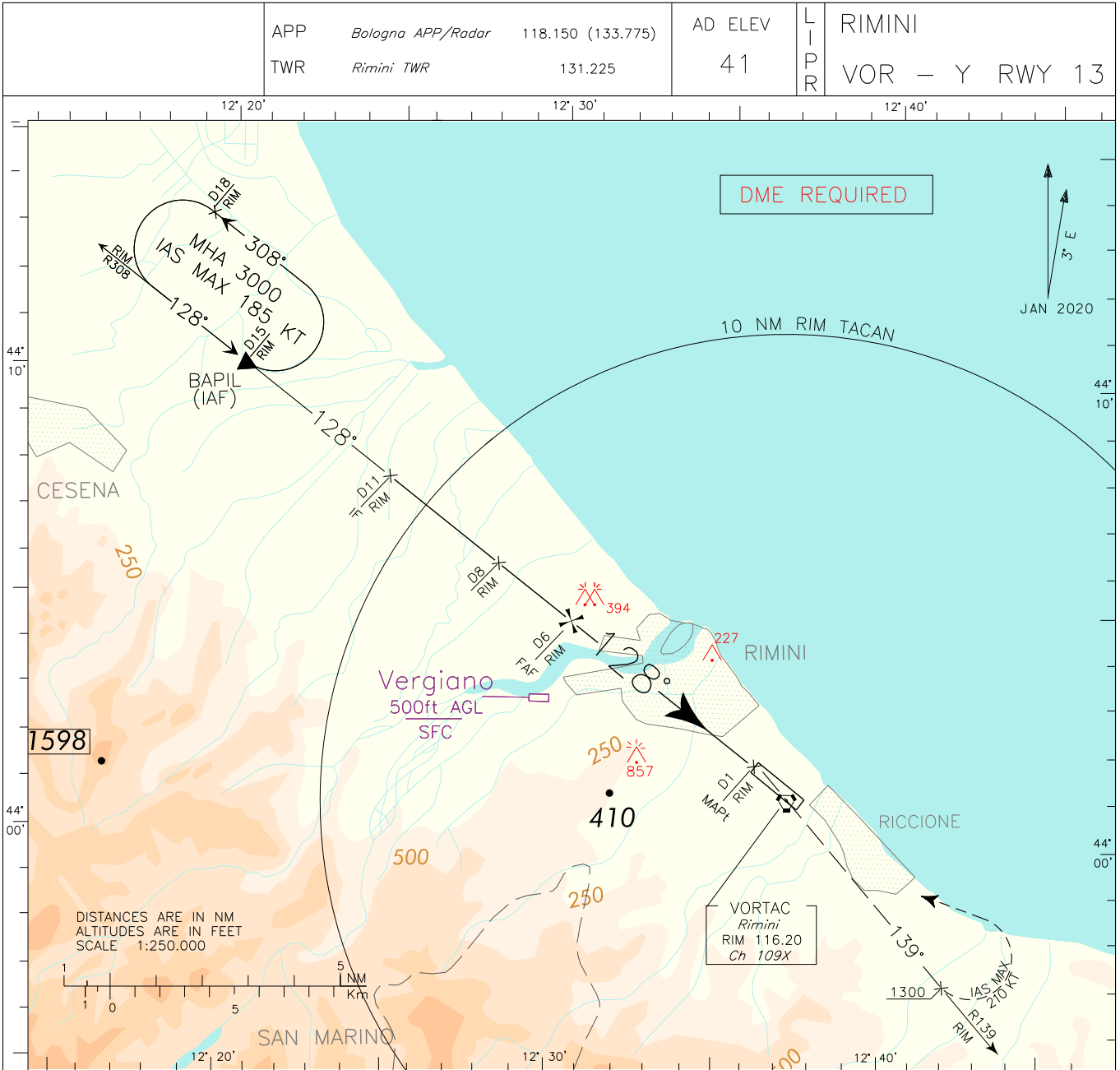
Passing 1500 FT turn left bound to RIM VORTAC holding pattern to reach at 4000 FT (IAS MAX 210 KT during turn).



D12	D11	D10	D9	D8	D7	D6	D5	D4	D3	D2	D1	D0	D1	D2	D3	D4	D5	D6
10	9	8	7	6	5	4	3	2	1	0	1	2	3	4	5	6	7	
												RIM VORTAC (NM)						
												THR 13 (NM)						

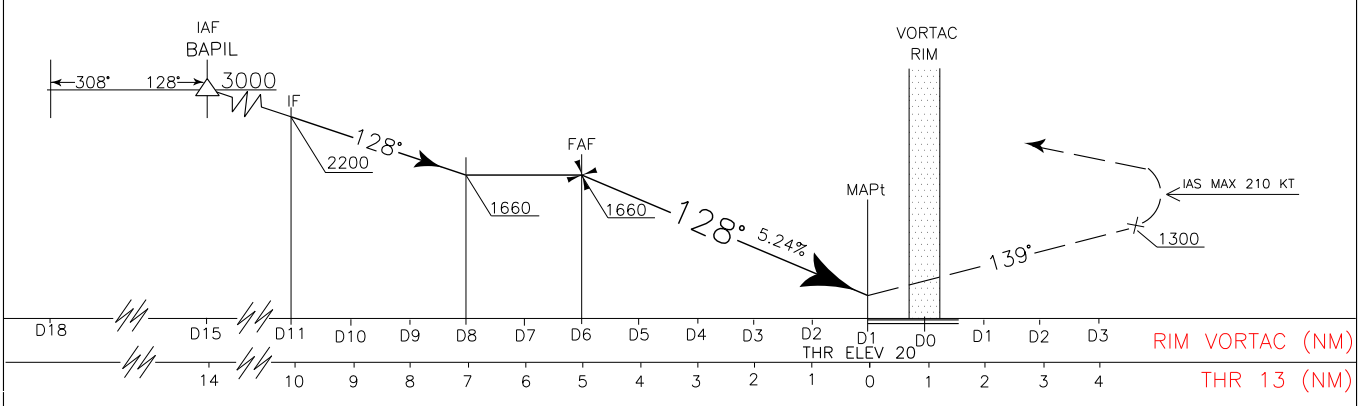
OCA (OCH)		A	B	C	D	REMARK: Circling procedure allowed East of RWY only. 	GS	FT PER MIN	RIM TACAN	ALT (HGT)	MNM SECT ALT 25 NM RIM VOR 
STRAIGHT IN APPROACH	VORDME			600 (580)			130	690	D 5	1350(1330)	
							150	797	D 4	1030(1010)	
							170	903	D 3	710 (690)	
CIRCLING				910 (869)		190	1009				
						210	1115				





CHANGE: HOLDING BAPIL MODIFIED.

TRANSITION ALT 6000 MISSED APPROACH: At D1 RIM TACAN climb to 3000 FT and, as soon as practicable, turn right to join RDL 139 RIM VOR. Passing 1300 FT turn left bound to RIM VORTAC, (IAS MAX 210 KT during turn). Leave RIM VOR on RDL 308 to BAPIL holding pattern.



		D18				D15				D11				D10				D9				D8				D7				D6				D5				D4				D3				D2				D1				D0				D1				D2				D3				RIM VORTAC (NM)			
		14				10				9				8				7				6				5				4				3				2				1				0				1				2				3				4				THR 13 (NM)							
STRAIGHT IN APPROACH		VORDME		A		B		C		D		REMARK: Circling procedure allowed East of RWY only. 		GS		FT/MIN		RIM TACAN		ALT (HGT)		MNM SECT ALT 25 NM RIM VOR 																																																			
				600 (580)										70		372		D 6		1660(1640)																																																					
CIRCLING				770 (719)				910 (869)				90		478		D 5		1350(1330)																																																							
												110		584		D 4		1030(1010)																																																							
												130		690		D 3		710 (690)																																																							
												150		797																																																											
												170		903																																																											
												190		1009																																																											
												210		1115																																																											