

NEW CHART

STAR RNAV 1
RIMINI

RWY 31

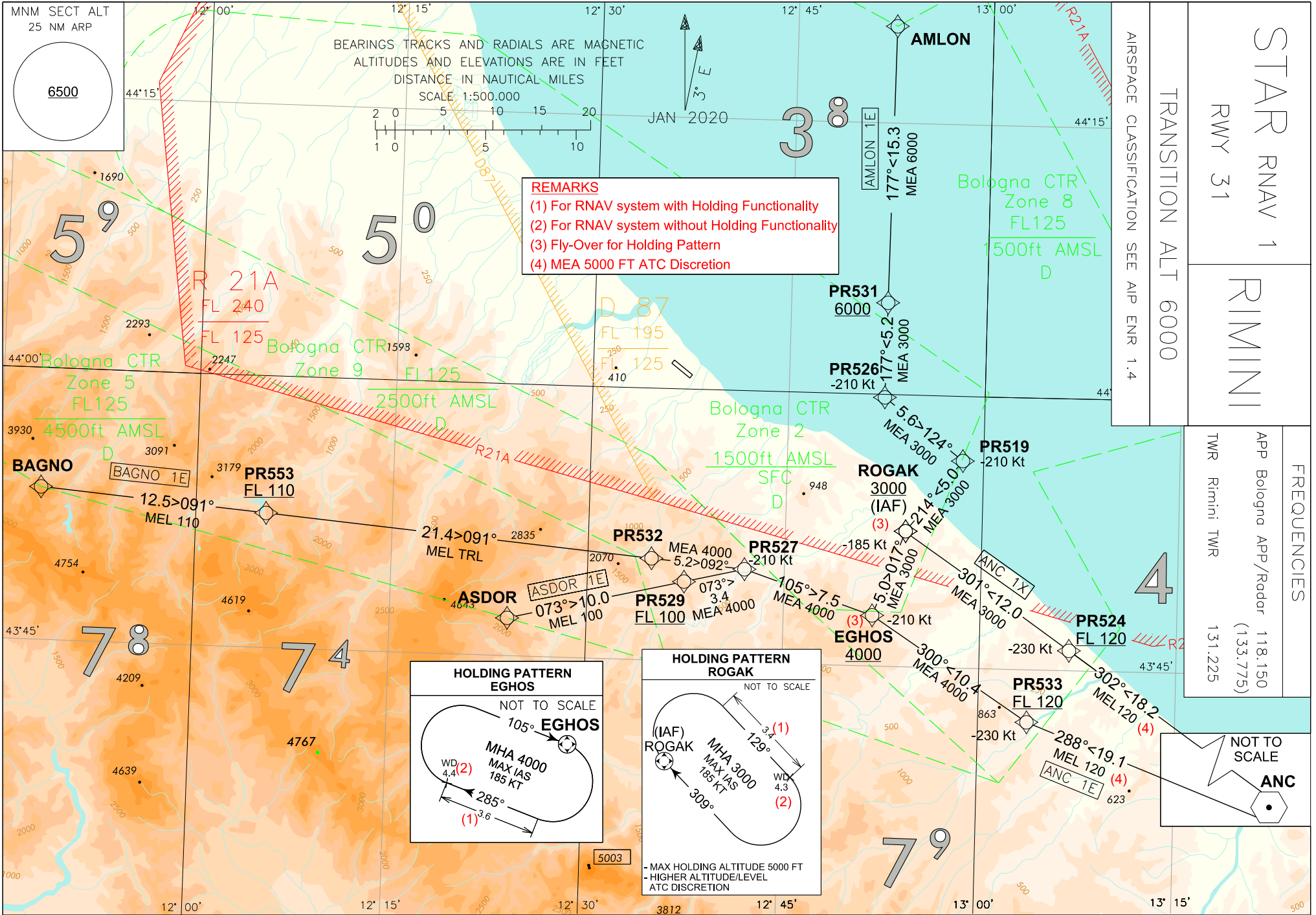
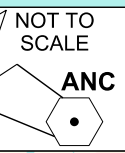
AIRSPACE CLASSIFICATION SEE AIP ENR 1.4

TRANSITION ALT 6000

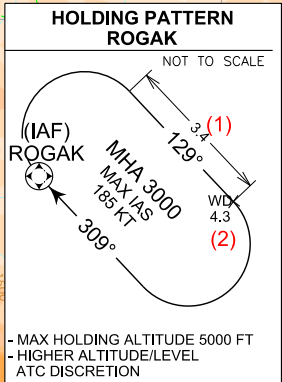
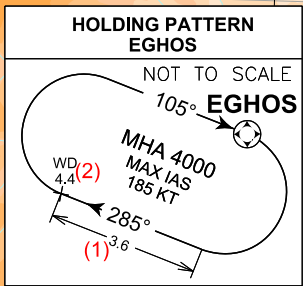
FREQUENCIES

APP Bologna APP/Radar 118.150
(133.775)

TWR Rimini TWR 131.225



REMARKS
(1) For RNAV system with Holding Functionality
(2) For RNAV system without Holding Functionality
(3) Fly-Over for Holding Pattern
(4) MEA 5000 FT ATC Discretion



RIMINI/ Miramare
STAR RNAV 1 RWY 31

TABULAR DESCRIPTION**AMLON 1E**

Path Terminator	Waypoint Identifier	Fly Over	Course °M (°T)	Magnetic Variation	Distance (NM)	Turn Direction	Altitude (ft)	Speed Limit (kt)	Navigation Specification
IF	AMLON	N	-	-	-	-	-	-	RNAV 1
TF	PR531	N	177 (180.5)	-	15.3	-	+6000	-	RNAV 1
TF	PR526	N	177 (180.5)	-	5.2	-	-	-210	RNAV 1
TF	PR519	N	124 (127.9)	-	5.6	-	-	-210	RNAV 1
TF	ROGAK	N	214 (217.8)	-	5.0	R	+3000	-185	RNAV 1

ANC 1E

Path Terminator	Waypoint Identifier	Fly Over	Course °M (°T)	Magnetic Variation	Distance (NM)	Turn Direction	Altitude (ft)	Speed Limit (kt)	Navigation Specification
IF	ANC	N	-	-	-	-	-	-	RNAV 1
TF	PR533	N	288 (291.4)	-	19.1	-	+FL 120 (1)	-230	RNAV 1
TF	EGHOS	N	300 (303.4)	-	10.4	-	+4000	-210	RNAV 1
TF	ROGAK	N	017 (020.3)	-	5.0	R	+3000	-185	RNAV 1

(1) + 5000 FT ATC Discretion

ANC 1X

Path Terminator	Waypoint Identifier	Fly Over	Course °M (°T)	Magnetic Variation	Distance (NM)	Turn Direction	Altitude (ft)	Speed Limit (kt)	Navigation Specification
IF	ANC	N	-	-	-	-	-	-	RNAV 1
TF	PR524	N	302 (305.2)	-	18.2	-	+FL 120 (1)	-230	RNAV 1
TF	ROGAK	N	301 (304.9)	-	12.0	-	+3000	-185	RNAV 1

(1) + 5000 FT ATC Discretion

ASDOR 1E

Path Terminator	Waypoint Identifier	Fly Over	Course °M (°T)	Magnetic Variation	Distance (NM)	Turn Direction	Altitude (ft)	Speed Limit (kt)	Navigation Specification
IF	ASDOR	N	-	-	-	-	-	-	RNAV 1
TF	PR529	N	073 (076.6)	-	10.0	-	+FL 100	-	RNAV 1
TF	PR527	N	073 (076.8)	-	3.4	-	-	-210	RNAV 1
TF	EGHOS	N	105 (108.3)	-	7.5	-	+4000	-210	RNAV 1
TF	ROGAK	N	017 (020.3)	-	5.0	L	+3000	-185	RNAV 1

BAGNO 1E

Path Terminator	Waypoint Identifier	Fly Over	Course °M (°T)	Magnetic Variation	Distance (NM)	Turn Direction	Altitude (ft)	Speed Limit (kt)	Navigation Specification
IF	BAGNO	N	-	-	-	-	-	-	RNAV 1
TF	PR553	N	091 (094.5)	-	12.5	-	+FL 110	-	RNAV 1
TF	PR532	N	091 (094.7)	-	21.4	-	-	-	RNAV 1
TF	PR527	N	092 (095.0)	-	5.2	-	-	-210	RNAV 1
TF	EGHOS	N	105 (108.3)	-	7.5	-	+4000	-210	RNAV 1
TF	ROGAK	N	017 (020.3)	-	5.0	L	+3000	-185	RNAV 1

HOLDING RNAV 1

Path Terminator	Waypoint Identifier	Inbound Course °M (°T)	Leg Distance (NM) (1)	Timing(min.)/Waypoint Distance (NM) (2)	Turn Direction	Minimum Altitude (FT)	Maximum Altitude (FL)	Speed Limit (kt)	Magnetic Variation (°)	Navigation Specification
HM	ROGAK	309 (312.4)	3.4	-/4.3	R	+3000	+5000 (3)	-185	+3.4	RNAV 1

Path Terminator	Waypoint Identifier	Inbound Course °M (°T)	Leg Distance (NM) (1)	Timing(min.)/Waypoint Distance (NM) (2)	Turn Direction	Minimum Altitude (FT)	Maximum Altitude (FL)	Speed Limit (kt)	Magnetic Variation (°)	Navigation Specification
HM	EGHOS	105 (108.4)	3.6	-/4.4	R	+4000	-	-185	+3.4	RNAV 1

(1) RNAV system with holding functionality

(2) RNAV system without holding functionality

(3) Higher altitude/level ATC discretion.

WAYPOINT LIST

Waypoint Identifier	Coordinates
PR519	43°56'26.35"N - 012°58'24.65"E
PR524	43°45'38.57"N - 013°07'44.40"E
PR526	43°59'50.84"N - 012°52'19.67"E
PR527	43°50'09.13"N - 012°41'57.51"E
PR529	43°49'22.53"N - 012°37'22.82"E
PR531	44°05'04.42"N - 012°52'23.56"E
PR532	43°50'36.60"N - 012°34'51.04"E
PR533	43°42'06.09"N - 013°03'43.68"E
PR553	43°52'25.78"N - 012°05'21.83"E

**RIMINI / Miramare
STAR RNAV 1 RWY 13**

TABULAR DESCRIPTION**ANC 1F**

Path Terminator	Waypoint Identifier	Fly Over	Course °M (°T)	Magnetic Variation	Distance (NM)	Turn Direction	Altitude (ft)	Speed Limit (kt)	Navigation Specification
IF	ANC	N	-	-	-	-	-	-	RNAV 1
TF	PR524	N	302 (305.2)	-	18.2	-	+FL120	-	RNAV 1
TF	ROGAK	N	301 (304.9)	-	12.0	-	-	-	RNAV 1
TF	PR436	N	325 (328.9)	-	15.1	-	+6000	-	RNAV 1
TF	PR424	N	304 (307.8)	-	12.0	-	+3000	-210	RNAV 1
TF	PR419	N	304 (307.6)	-	3.9	-	-	-210	RNAV 1
TF	BAPIL	N	214 (217.6)	-	5.5	-	+3000	-185	RNAV 1

AMLON 1F

Path Terminator	Waypoint Identifier	Fly Over	Course °M (°T)	Magnetic Variation	Distance (NM)	Turn Direction	Altitude (ft)	Speed Limit (kt)	Navigation Specification
IF	AMLON	N	-	-	-	-	-	-	RNAV 1
TF	PR428	N	251 (254.8)	-	13.5	-	+6000	-	RNAV 1
TF	PR419	N	251 (254.6)	-	6.4	-	+3000	-210	RNAV 1
TF	BAPIL	N	214 (217.6)	-	5.5	-	+3000	-185	RNAV 1

ASDOR 1F

Path Terminator	Waypoint Identifier	Fly Over	Course °M (°T)	Magnetic Variation	Distance (NM)	Turn Direction	Altitude (ft)	Speed Limit (kt)	Navigation Specification
IF	ASDOR	N	-	-	-	-	-	-	RNAV 1
TF	PR432	N	004 (007.7)	-	11.0	-	+FL 100	-	RNAV 1
TF	PR426	N	317 (320.3)	-	6.0	-	-	-	RNAV 1
TF	PR421	N	317 (320.3)	-	6.0	-	+4000	-210	RNAV 1
TF	BAPIL	N	047 (050.2)	-	5.5	-	+3000	-185	RNAV 1

BAGNO 1F

Path Terminator	Waypoint Identifier	Fly Over	Course °M (°T)	Magnetic Variation	Distance (NM)	Turn Direction	Altitude (ft)	Speed Limit (kt)	Navigation Specification
IF	BAGNO	N	-	-	-	-	-	-	RNAV 1
TF	PR437	N	052 (054.8)	-	7.0	-	+FL110	-	RNAV 1
TF	PR427	N	052 (054.9)	-	10.5	-	-	-	RNAV 1
TF	PR421	N	052 (055.1)	-	6.5	-	+4000	-210	RNAV 1
TF	BAPIL	N	047 (050.2)	-	5.5	-	+3000	-185	RNAV 1

HOLDING RNAV 1

Path Terminator	Waypoint Identifier	Inbound Course °M (°T)	Leg Distance (NM) (1)	Timing(min.)/ Waypoint Distance (NM) (2)	Turn Direction	Minimum Altitude (FT)	Maximum Altitude (FL)	Speed Limit (kt)	Magnetic Variation (°)	Navigation Specification
HM	BAPIL	128 (131)	3.0	-/3.9	L	+3000	-	-185	+3.4	RNAV 1

(1) RNAV system with holding functionality

(2) RNAV system without holding functionality

WAYPOINT LIST

Waypoint Identifier	Coordinates
PR419	44°15'05.93"N - 012°25'55.85"E
PR421	44°07'13.22"N - 012°15'23.83"E
PR424	44°12'44.83"N - 012°30'10.58"E
PR426	44°02'36.50"N - 012°20'43.32"E
PR427	44°03'29.73"N - 012°07'59.34"E
PR428	44°16'47.70"N - 012°34'28.42"E
PR432	43°57'59.53"N - 012°26'01.99"E
PR436	44°05'24.39"N - 012°43'21.71"E
PR437	43°57'27.98"N - 011°56'03.88"E
PR524	43°45'38.57"N - 013°07'44.40"E

STAR VORTAC
RIMINI

RWY 31

TRANSITION ALT 6000

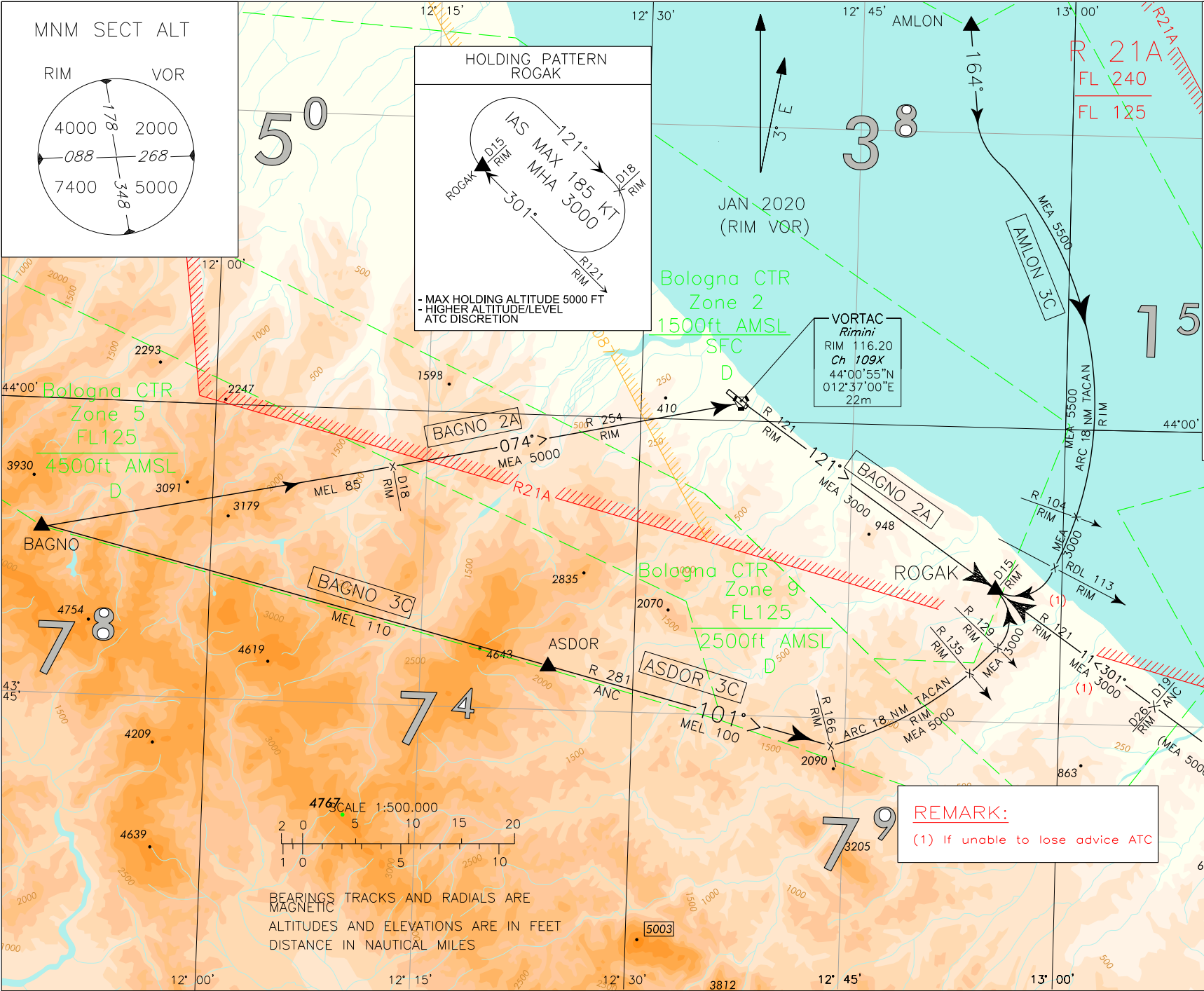
FREQUENCIES

APP Bologna APP/Radar 118.150
(133.775)

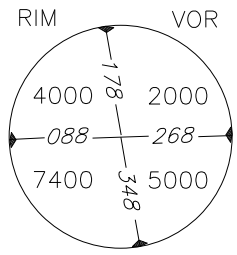
TWR Rimini TWR 131.225

AIRSPACE CLASSIFICATION SEE AIP ENR 1.4

CHANGE: DME 'ANC' ANTENNA ELEVATION UPDATED



MNM SECT ALT



STAR VORTAC RWY 31 DESCRIPTION**■ AMLON 3C**

Leave AMLON on TR 164°, then turn left until joining ARC 18NM RIM TACAN, then crossing RDL 113 RIM VOR turn right until joining RDL 121 RIM VOR (TR 301°) bound to ROGAK.



MEA: AMLON – INT ARC 18NM RIM TACAN/RDL 104 RIM VOR: 5500 FT;
INT ARC 18NM RIM TACAN/RDL 104 RIM VOR - ROGAK: 3000 FT

ANC 2C

ANC VOR/DME – TR 302° (RDL 302 ANC VOR) – RDL 302/19NM ANC VOR/DME (RDL 121/26NM RIM VORTAC) – TR 301° (RDL 121 RIM VOR) – ROGAK.

MEL/MEA: ANC VOR/DME – RDL 302/19NM ANC VOR/DME (RDL 121/26NM RIM VORTAC): FL 120 (5000 FT *ATC discretion*);
RDL 302/19NM ANC VORDME (RDL 121/26NM RIM VORTAC) – ROGAK: 3000 FT

■ ASDOR 3C

ASDOR – TR 101° (RDL 281 ANC VOR), then crossing RDL 166 RIM VOR turn left until joining ARC 18NM RIM TACAN, then crossing RDL 129 RIM VOR turn left until joining RDL 121 RIM VOR (TR 301°) bound to ROGAK.



MEL/MEA: ASDOR – INT RDL 281 ANC VOR/RDL 166 RIM VOR: FL 100; INT RDL 281 ANC VOR/RDL 166 RIM VOR – INT ARC 18NM RIM TACAN/RDL 135 RIM VOR: 5000 FT; INT ARC 18NM RIM TACAN/RDL 135 RIM VOR – ROGAK: 3000FT

■ BAGNO 3C

BAGNO – ASDOR – TR 101° (RDL 281 ANC VOR), then crossing RDL 166 RIM VOR turn left until joining ARC 18NM RIM TACAN, then crossing RDL 129 RIM VOR turn left until joining RDL 121 RIM VOR (TR 301°) bound to ROGAK.



MEL/MEA: BAGNO – ASDOR: FL 110; ASDOR – INT RDL 281 ANC VOR/RDL 166 RIM VOR: FL 100;
INT RDL 281 ANC VOR/RDL 166 RIM VOR – INT ARC 18NM RIM TACAN/RDL 135 RIM VOR: 5000 FT;
INT ARC 18NM RIM TACAN/RDL 135 RIM VOR – ROGAK: 3000FT

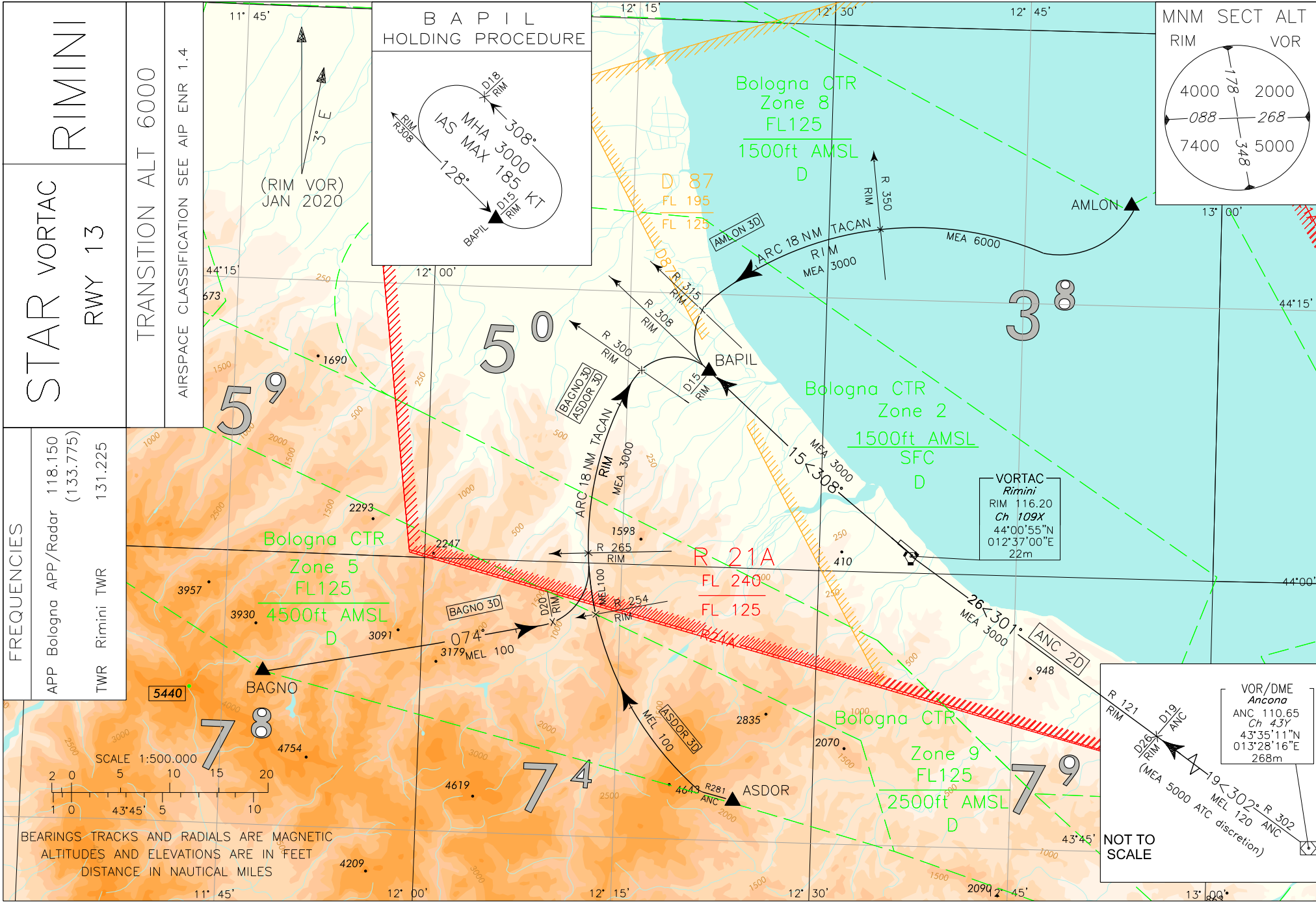
BAGNO 2A

BAGNO – TR 074° (RDL 254 RIM VOR) – RIM VORTAC – RDL 121 RIM VOR (TR 121°) – ROGAK.

MEL/MEA: BAGNO – RDL 254/18NM RIM VORTAC: FL 85; RDL 254/18NM RIM VORTAC – RIM VORTAC: 5000 FT;
RIM VORTAC – ROGAK: 3000 FT

Intenzionalmente bianca

Intentionally left blank



STAR VORTAC RWY 13 DESCRIPTION**AMLON 3D**

Over AMLON turn right until joining ARC 18NM RIM TACAN, then crossing RDL 315 RIM VOR turn left until joining RDL 308 RIM VOR (TR 128°) bound to BAPIL.

MEA: AMLON - INT ARC 18NM RIM TACAN/RDL 350 RIM VOR: 6000 FT
INT ARC 18NM RIM TACAN/RDL 350 RIM VOR – BAPIL: 3000 FT

ANC 2D

ANC VOR/DME – TR 302° (RDL 302 ANC VOR) – RDL 302/19NM ANC VOR/DME (RDL121/26NM RIM VORTAC) – TR 301° (RDL 121 RIM VOR) – RIM VORTAC – TR 308° (RDL 308 RIM VOR) – BAPIL.

MEL/MEA: ANC VOR/DME – RDL 302/19NM ANC VOR/DME (RDL 121/26NM RIM VORTAC): FL 120 (5000 FT *ATC discretion*);
RDL 302/19NM ANC VOR/DME (RDL 121/26NM RIM VORTAC) – RIM VORTAC – BAPIL: 3000 FT.

ASDOR 3D

ASDOR – TR 281° (RDL 281 ANC VOR) until joining ARC 18NM RIM TACAN, then crossing RDL 300 RIM VOR turn right until joining RDL 308 RIM VOR (TR 128°) bound to BAPIL.

MEL/MEA: ASDOR – INT ARC 18NM RIM TACAN/RDL 265 RIM VOR: FL 100;
INT ARC 18NM RIM TACAN/RDL 265 RIM VOR – BAPIL: 3000 FT

BAGNO 3D

BAGNO – TR 074° (RDL 254 RIM VOR). At 20NM RIM TACAN turn left until joining ARC 18NM RIM TACAN, then crossing RDL 300 RIM VOR turn right until joining RDL 308 RIM VOR (TR 128°) bound to BAPIL.

MEL/MEA: BAGNO – INT ARC 18NM RIM TACAN/RDL 265 RIM VOR: FL 100;
INT ARC 18NM RIM TACAN/RDL 265 RIM VOR – BAPIL: 3000 FT

Intenzionalmente bianca

Intentionally left blank

STAR VOR RWY 13/31

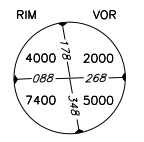
RIMINI

TRANSITION ALT 6000

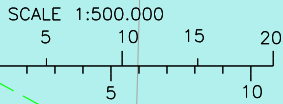
FREQUENCIES

APP Bologna APP/Radar 118.150
(133.775)
TWR Rimini TWR 131.225

MNM SECT ALT



BEARINGS TRACKS AND RADIALS ARE MAGNETIC
ALTITUDES AND ELEVATIONS ARE IN FEET
DISTANCE IN NAUTICAL MILES



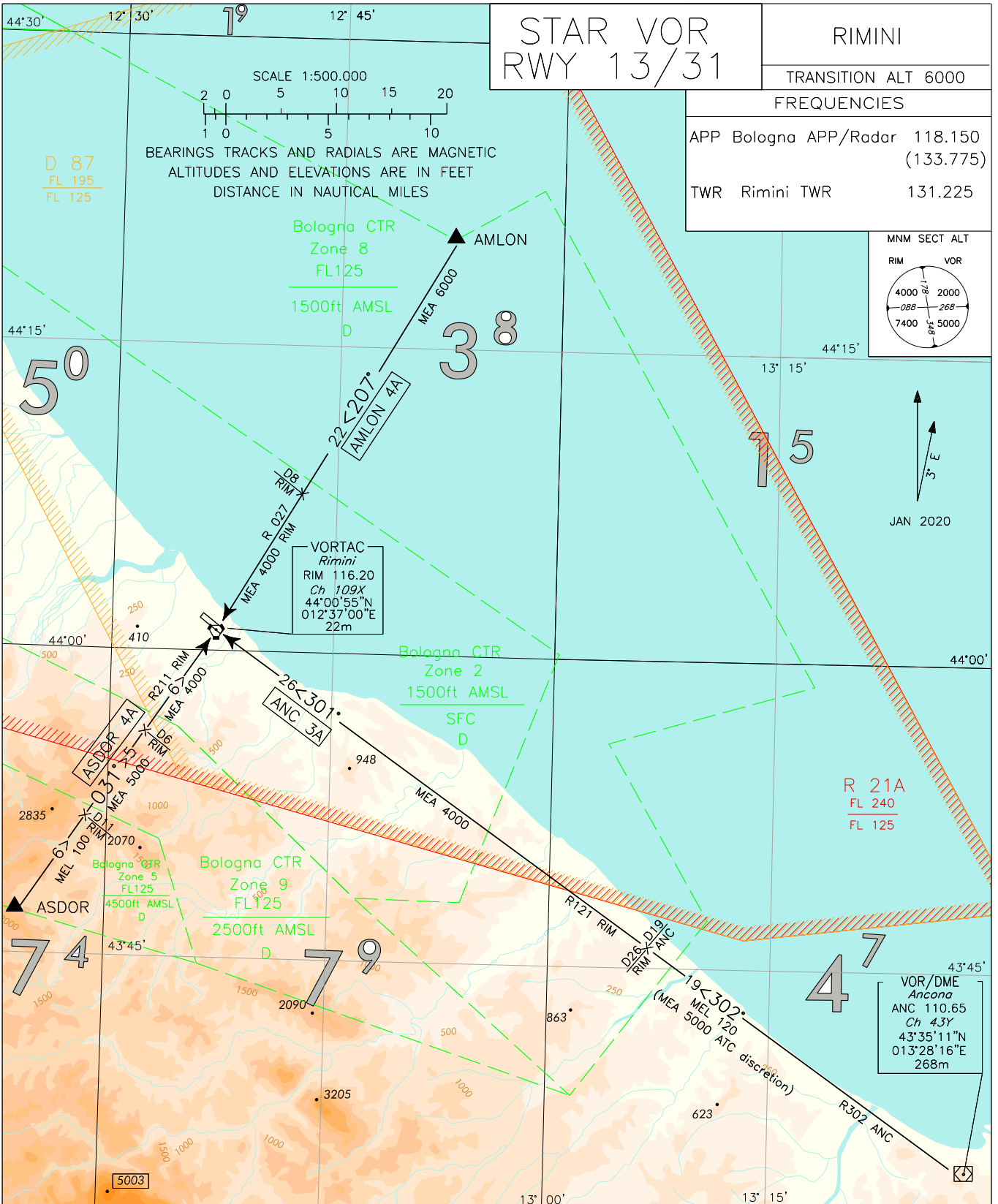
D 87
FL 195
FL 125

Bologna CTR
Zone 8
FL125
1500ft AMSL
D

VORTAC
Rimini
RIM 116.20
Ch 109X
44°00'55"N
012°37'00"E
22m

VOR/DME
Ancona
ANC 110.65
Ch 43Y
43°35'11"N
013°28'16"E
268m

CHANGE: DME 'ANC' ANTENNA ELEVATION UPDATED



RIM VORTAC RWY 31 Holding Procedure	RIM VORTAC RWY 13 Holding Procedure	RIM VORTAC RWY 13 Holding Procedure
		CAT A/B ACFT ONLY

AIR SPACE CLASSIFICATION
SEE AIP ENR 1.4

STAR VOR RWY 13/31**AMLON 4A**

AMLON – TR 207° (RDL 027 RIM VOR) bound to RIM VORTAC.

MEA: AMLON – RDL 027/8.0NM RIM VORTAC: 6000 FT
RDL 027/8.0NM RIM VORTAC – RIM VORTAC: 4000 FT

ANC 3A

ANC VOR/DME – TR 302° (RDL 302 ANC VOR) – RDL 302/19NM ANC VOR/DME (RDL 121/26NM RIM VORTAC) –
TR 301° (RDL 121 RIM VOR) bound to RIM VORTAC.

MEL/MEA: ANC VOR/DME – RDL 302/19NM ANC VOR/DME (RDL 121/26NM RIM VORTAC): FL 120 (5000 FT *ATC discretion*);
RDL 302/19NM ANC VOR/DME (RDL 121/26NM RIM VORTAC) – RIM VORTAC: 4000 FT.

ASDOR 4A

ASDOR – TR 031° (RDL 211 RIM VOR) bound to RIM VORTAC.

MEL/MEA: ASDOR – RDL 211/11NM RIM VORTAC: FL 100; RDL 211/11NM RIM VORTAC – RDL 211/6NM RIM VORTAC: 5000 FT;
RDL 211/6NM RIM VORTAC – RIM VORTAC: 4000 FT

Intenzionalmente bianca

Intentionally left blank