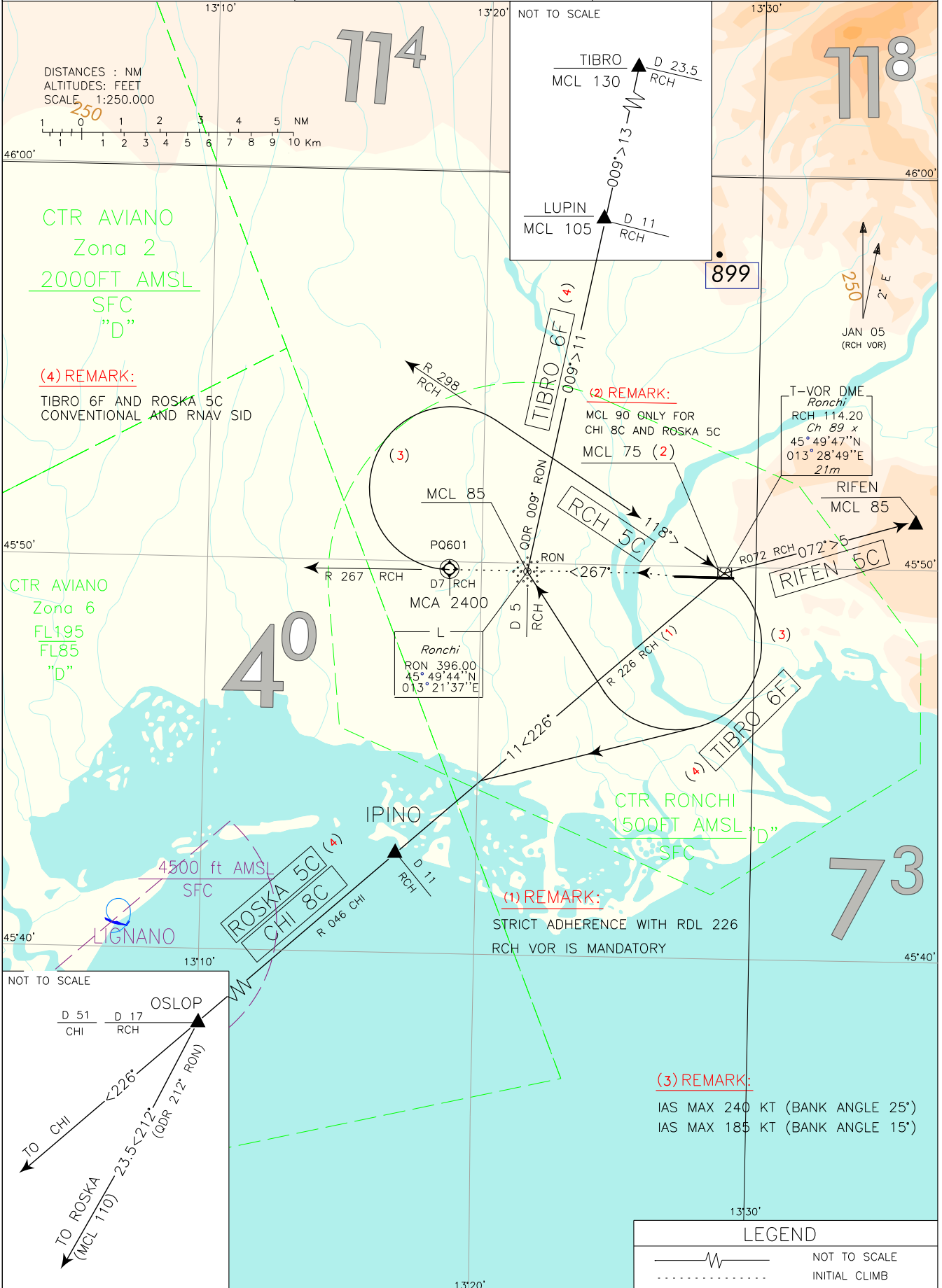


FREQUENCIES		INITIAL CLIMB PROCEDURES & SIDs RWY 27	TRIESTE RONCHI DEI LEGIONARI TRANSITION ALTITUDE 5000
TWR	Ronchi TWR 130.205		
APP	Padova Radar 119.175		



CHANGE: RONCHI CTR LATERAL AND VERTICAL LIMITS MODIFIED; APP SERVICE UPDATED.

INITIAL CLIMB PROCEDURE RWY 27

After take-off intercept and follow RDL 267 RCH VOR until 7 NM RCH DME (to be crossed at 2400 FT or above), then join the assigned SID.

REMARKS

- 1) Minimum climb gradient: 425 FT/NM (7%)
- 2) During turns: IAS MAX 240 KT (bank angle 25°)
IAS MAX 185 KT (bank angle 15°)

SIDs DESCRIPTION

Initial climb procedure executed:

ROSKA 5C

Turn right until intercepting and follow RDL 298 RCH VOR (TR 118°) bound to RCH VOR. Leave RCH VOR on RDL 226 RCH VOR (RDL 046 CHI VOR) and proceed via IPINO – OSLOP, then turn left until intercepting and follow QDR 212° RON L bound to ROSKA.

REMARKS

- 1) Minimum climb gradient: 365 FT/NM (6.0%) until passing FL 90 except for ACFT with exit route planned via ROSKA - T128 which are expected to maintain at least a minimum climb gradient of 333 FT/NM (5.5%) until reaching FL 210
- 2) Strict adherence with the RDL 226 RCH VOR is mandatory
- 3) During turns: IAS MAX 240 KT (bank angle 25°)
IAS MAX 185 KT (bank angle 15°)

MCA/MCL: RCH VOR FL 90; ROSKA FL 110 (FL210 for ACFT planning via ROSKA-T128)

Path Terminator	Waypoint Identifier	Fly Over	Course °M (°T)	Magnetic Variation (°)	Distance (NM)	Turn Direction	Altitude	Speed Limit (KT)	Navigation Performance
CA	-	-	268 (270.4)	1.95	-	-	+450 FT	(3)	Conventional/ RNAV1
CF	PQ601	Y	267 (269.3)	-	7.0	-	+2400 FT	(3)	Conventional/ RNAV1
DF	RCH	Y	-	-	-	R	+FL 90	(3)	Conventional/ RNAV1
TF	IPINO	-	226 (228.3)	-	11.0	-	-	-	Conventional/ RNAV1
TF	OSLOP	-	226 (228.3)	-	6.0	-	-	-	Conventional/ RNAV1
TF	ROSKA	-	212 (214.3)	-	23.7	-	+FL 110 (1)	-	Conventional/ RNAV1

TIBRO 6F

Turn right until intercepting and follow RDL 298 RCH VOR (TR 118°) bound to RCH VOR. Overflying RCH VOR turn right direct to RON L. Leave RON L on QDR 009° bound to LUPIN, then TIBRO.

REMARKS

- 1) Minimum climb gradient: 365 FT/NM (6.0%) until passing FL 75
- 2) During turns: IAS MAX 240 KT (bank angle 25°)
IAS MAX 185 KT (bank angle 15°)

MCA/MCL: RCH VOR FL 75; RON L FL 85; LUPIN FL 105; TIBRO FL 130

Path Terminator	Waypoint Identifier	Fly Over	Course °M (°T)	Magnetic Variation (°)	Distance (NM)	Turn Direction	Altitude	Speed Limit (KT)	Navigation Performance
CA	-	-	268 (270.4)	1.95	-	-	+450 FT	(2)	Conventional/ RNAV1
CF	PQ601	Y	267 (269.3)	-	7.0	-	+2400 FT	(2)	Conventional/ RNAV1
CF	RCH	Y	118 (119.9)	-	-	R	+FL 75	(2)	Conventional/ RNAV1
DF	RON	-	-	-	-	R	+FL 85	-	Conventional/ RNAV1
TF	LUPIN	-	009 (011.4)	-	11.0	-	+FL 105	-	Conventional/ RNAV1
TF	TIBRO	-	009 (011.3)	-	13.0	-	+FL 130	-	Conventional/ RNAV1

CHI 8C

Turn right until intercepting and follow RDL 298 RCH VOR (TR 118°) bound to RCH VOR. Leave RCH VOR on RDL 226 RCH VOR (RDL 046 CHI VOR) and proceed via IPINO – OSLOP – CHI VOR.

REMARKS

- 1) **Minimum climb gradient: 365 FT/NM (6.0%) until passing FL 90**
- 2) **Strict adherence with the RDL 226 RCH VOR is mandatory**
- 3) **During turns: IAS MAX 240 KT (bank angle 25°)
IAS MAX 185 KT (bank angle 15°)**

MCA/MCL: RCH VOR FL 90; IPINO FL 90

RIFEN 5C

Turn right until intercepting and follow RDL 298 RCH VOR (TR 118°) bound to RCH VOR. Leave RCH VOR on RDL 072 RCH VOR bound to RIFEN.

REMARK

Minimum climb gradient: 365 FT/NM (6.0%) until passing FL 75

MCA/MCL: RCH VOR FL 75; RIFEN FL 85

RCH 5C

Turn right until intercepting and follow RDL 298 RCH VOR (TR 118°) bound to RCH VOR.

REMARK

Minimum climb gradient: 365 FT/NM (6.0%) until passing FL 75

MCA/MCL: RCH VOR FL75

WAYPOINT LIST

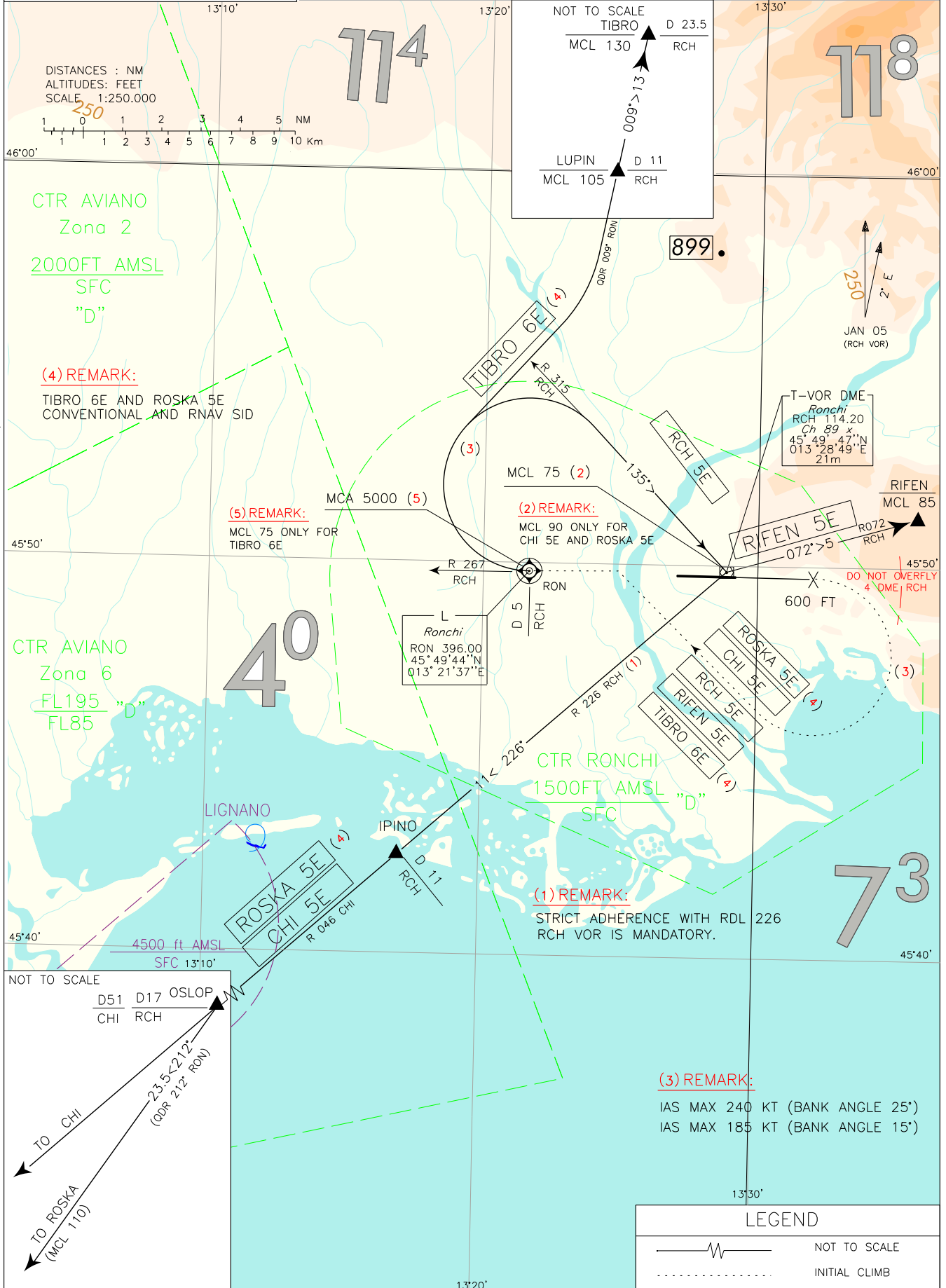
Waypoint Identifier	Coordinates	
	PQ601	45° 49' 42.20" N

FREQUENCIES		
TWR	Ronchi TWR	130.205
APP	Padova Radar	119.175

INITIAL CLIMB PROCEDURES & SIDs RWY 09

TRIESTE RONCHI DEI LEGIONARI

TRANSITION ALTITUDE 5000



CHANGE: RONCHI CTR LATERAL AND VERTICAL LIMITS MODIFIED; APP SERVICE UPDATED.

INITIAL CLIMB PROCEDURE RWY 09

After take-off proceed on runway heading and passing 600 FT turn right to intercept and follow RDL 267 RCH VOR (TR 267°) bound to RON L (RDL 267/5NM RCH VOR/DME), then join the assigned SID.

REMARKS

- 1) Departures shall start turn so as not trespass, Eastbound, 4NM RCH DME
- 2) Minimum climb gradient: 370 FT/NM (6.1%) for SID TIBRO 6E, 300 FT/NM (4.94%) for other SID. Departing traffic planned via ROSKA-T128 shall maintain a minimum climb gradient of 310 FT/NM (5.1%)
- 3) During turns: IAS MAX 240 KT (bank angle 25°)
IAS MAX 185 KT (bank angle 15°)

SIDs DESCRIPTION

Initial climb procedure executed:

ROSKA 5E

Turn right until intercepting and follow RDL 315 RCH VOR (TR 135°) bound to RCH VOR. Leave RCH VOR on RDL 226 RCH VOR (RDL 046 CHI VOR) and proceed via IPINO – OSLOP, then turn left until intercepting and follow QDR 212° RON L bound to ROSKA.

REMARKS

- 1) Minimum climb gradient: 300 FT/NM (4.94%) until passing FL 90, except for ACFT with exit route planned via ROSKA-T128, which shall maintain a gradient of 310 FT/NM (5.1%)
- 2) Strict adherence with the RDL 226 RCH VOR is mandatory
- 3) During turns: IAS MAX 240 KT (bank angle 25°)
IAS MAX 185 KT (bank angle 15°)

MCA/MCL: RON L 5000 FT; RCH VOR FL 90; ROSKA FL 110 (FL210 for aa/cc planning via ROSKA-T128)

Path Terminator	Waypoint Identifier	Fly Over	Course °M (°T)	Magnetic Variation (°)	Distance (NM)	Turn Direction	Altitude	Speed Limit (KT)	Navigation Performance
CA	-	-	088 (090.4)	1.95	-	-	+600 FT	(3)	Conventional/ RNAV1
CF	RON	Y	267 (269.4)	-	-	R	+5000 FT	(3)	Conventional/ RNAV1
DF	RCH	Y	-	-	-	R	+FL 90	(3)	Conventional/ RNAV1
TF	IPINO	-	226 (228.3)	-	11.0	R	-	-	Conventional/ RNAV1
TF	OSLOP	-	226 (228.3)	-	6.0	-	-	-	Conventional/ RNAV1
TF	ROSKA	-	212 (214.3)	-	23.7	-	+FL 110 (1)	-	Conventional/ RNAV1

TIBRO 6E

Turn right until intercepting and follow QDR 009° RON L bound to LUPIN, then TIBRO.

REMARKS

- 1) Minimum climb gradient: 370 FT/NM (6.1%) until passing FL 105
- 2) During turns: IAS MAX 240 KT (bank angle 25°)
IAS MAX 185 KT (bank angle 15°)

MCA/MCL: RON L FL 75; LUPIN FL 105; TIBRO FL 130

Path Terminator	Waypoint Identifier	Fly Over	Course °M (°T)	Magnetic Variation (°)	Distance (NM)	Turn Direction	Altitude	Speed Limit (KT)	Navigation Performance
CA	-	-	088 (090.4)	1.95	-	-	+600 FT	(2)	Conventional/ RNAV1
CF	RON	Y	267 (269.4)	-	-	R	+FL 75	(2)	Conventional/ RNAV1
TF	LUPIN	-	009 (011.4)	-	11.0	R	+FL 105	(2)	Conventional/ RNAV1
TF	TIBRO	-	009 (011.3)	-	13.0	-	+FL 130	-	Conventional/ RNAV1

CHI 5E

Turn right until intercepting and follow RDL 315 RCH VOR (TR 135°) bound to RCH VOR. Leave RCH VOR on RDL 226 RCH VOR (RDL 046 CHI VOR) and proceed via IPINO – OSLOP – CHI VOR.

REMARKS

- 1) **Minimum climb gradient: 300 FT/NM (4.94%) until passing FL 90**
- 2) **Strict adherence with the RDL 226 RCH VOR is mandatory**
- 3) **During turns: IAS MAX 240 KT (bank angle 25°)**
IAS MAX 185 KT (bank angle 15°)

MCA/MCL: RON L 5000 FT; RCH VOR FL 90; IPINO FL 90

RIFEN 5E

Turn right until intercepting and follow RDL 315 RCH VOR (TR 135°) bound to RCH VOR. Leave RCH VOR on RDL 072 RCH VOR bound to RIFEN.

REMARKS

- 1) **Minimum climb gradient: 300 ft/NM (4.94%) until passing FL 75**
- 2) **During turns: IAS MAX 240 KT (bank angle 25°)**
IAS MAX 185 KT (bank angle 15°)

MCA/MCL: RON L 5000 FT; RCH VOR FL 75; RIFEN FL 85

RCH 5E

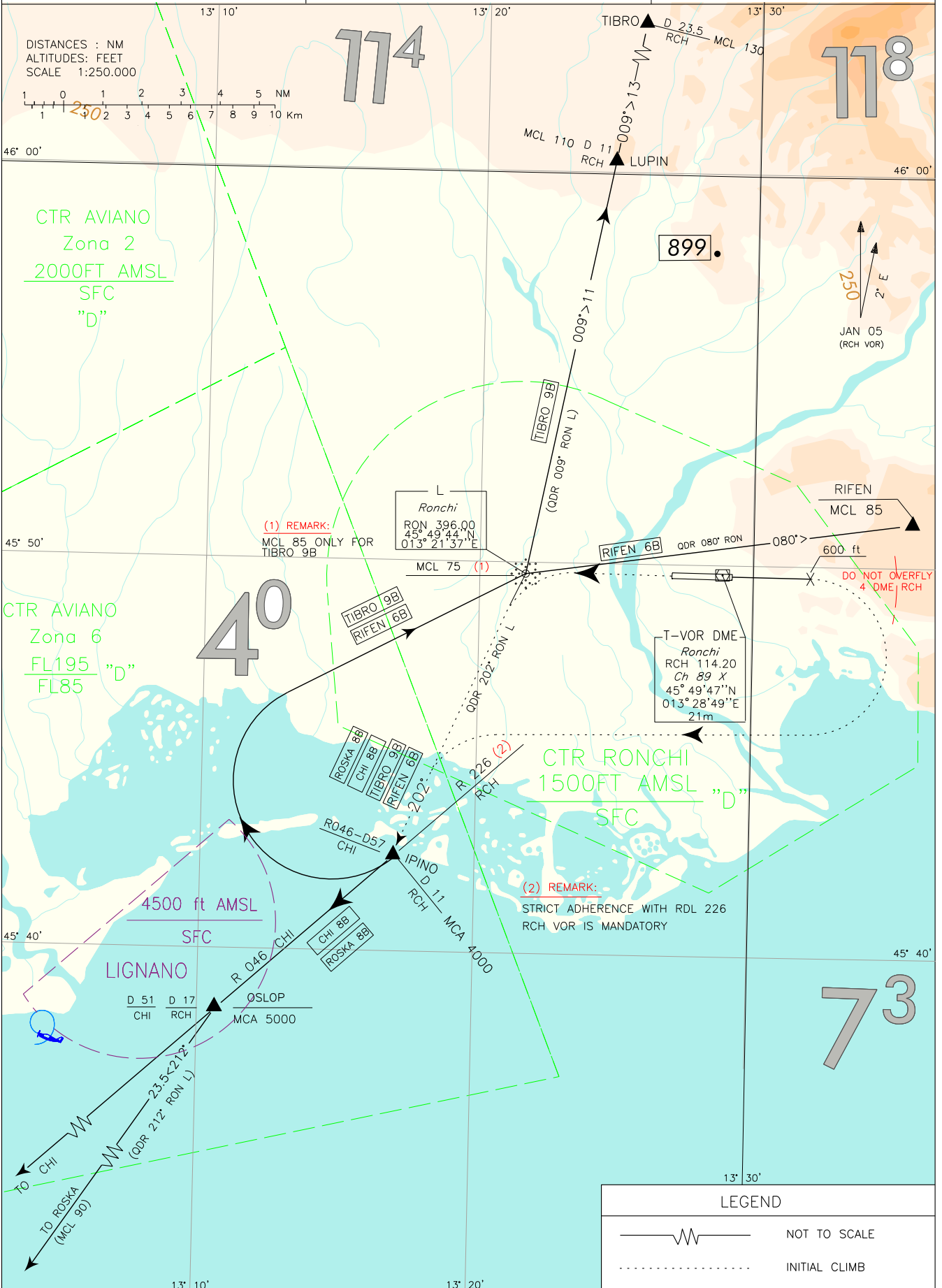
Turn right until intercepting and follow RDL 315 RCH VOR (TR 135°) bound to RCH VOR.

REMARKS

- 1) **Minimum climb gradient: 300 ft/NM (4.94%) until passing FL 75**
- 2) **During turns: IAS MAX 240 KT (bank angle 25°)**
IAS MAX 185 KT (bank angle 15°)

MCA/MCL: RON L 5000 FT; RCH VOR FL75

FREQUENCIES		ICP & SIDs RWY 09/27 (ATC DISCRETION)	TRieste RONCHI DEI LEGIONARI
TWR	Ronchi TWR		130.205
APP	Padova Radar	119.175	



CHANGE: RONCHI CTR LATERAL AND VERTICAL LIMITS MODIFIED; APP SERVICE UPDATED.

INITIAL CLIMB PROCEDURE**General requirements**

1. Minimum climb gradient: 300 FT/NM;
2. Strict adherence with the RDL 226 RCH VOR is mandatory;
3. Pilots shall adopt a minimum climb gradient in accordance with ICAO ANNEX 6 provisions for a safe obstacles overflying. Such minimum climb gradient shall be maintained in any foreseeable circumstance;
4. Depending on traffic and meteorological conditions, the ATC Units may authorize routes different from those listed below.

Initial climb procedure RWY 27

After take-off, turn left until intercepting and follow QDR 202° RON L bound to IPINO, then proceed along the assigned SID.

REMARKS

- 1) Departures from RWY 27 shall start left turn after take-off as soon as possible and in any case before RON L
- 2) During the turn IAS MAX 200 KT and bank angle 20° or rate of turn 2°/s, whichever requires lesser bank

Initial climb procedure RWY 09

After take-off, crossing 600 FT, turn right until intercepting and follow QDR 202° RON L bound to IPINO, then proceed along the assigned SID.

REMARKS

- 1) Departures from RWY 09 shall start turn so as not trespass, Eastbound, 4 NM RCH DME
- 2) During turns: IAS MAX 240 KT (bank angle 25°)
IAS MAX 185 KT (bank angle 15°)

SIDs DESCRIPTION

Initial climb procedure executed:

ROSKA 8B (ATC Discretion)

Follow RDL 226 RCH VOR (RDL 046 CHI VOR) bound to OSLOP, then turn left to join QDR 212° RON L bound to ROSKA.

REMARK

ACFT with exit planned route via ROSKA - T128 shall maintain a minimum climb gradient of 425 ft/NM (7%)

MCA/MCL: IPINO 4000 FT; OSLOP 5000 FT; ROSKA FL 90 (FL 210 for ACFT planning via ROSKA - UT128)

CHI 8B (ATC discretion)

Follow RDL 226 RCH VOR (RDL 046 CHI VOR) and proceed via OSLOP – CHI VOR/DME.

MCA: IPINO 4000 FT; OSLOP 5000 FT

TIBRO 9B (ATC discretion)

Passing IPINO, or crossing 4000 FT, turn right to RON L. Leave RON L on QDR 009° RON L and proceed via LUPIN – TIBRO.

MCA/MCL: IPINO 4000 FT; RON L FL85; LUPIN FL 110; TIBRO FL 130

RIFEN 6B (ATC discretion)

Passing IPINO, or crossing 4000 FT, turn right to RON L. Leave RON L on QDR 080° RON L bound to RIFEN.

MCA/MCL: IPINO 4000 FT; RON L FL 75; RIFEN FL 85

Intenzionalmente bianca

Intentionally left blank