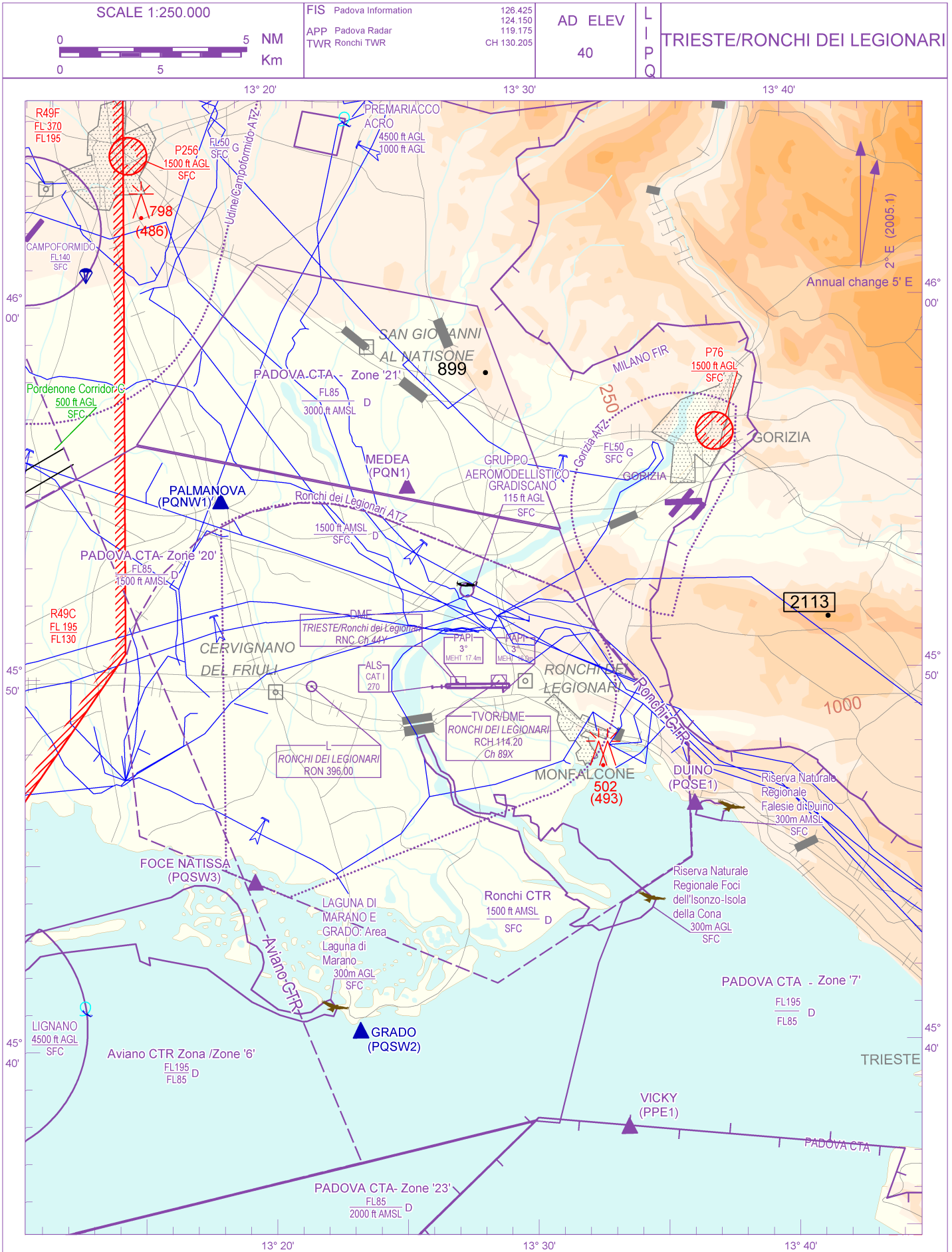


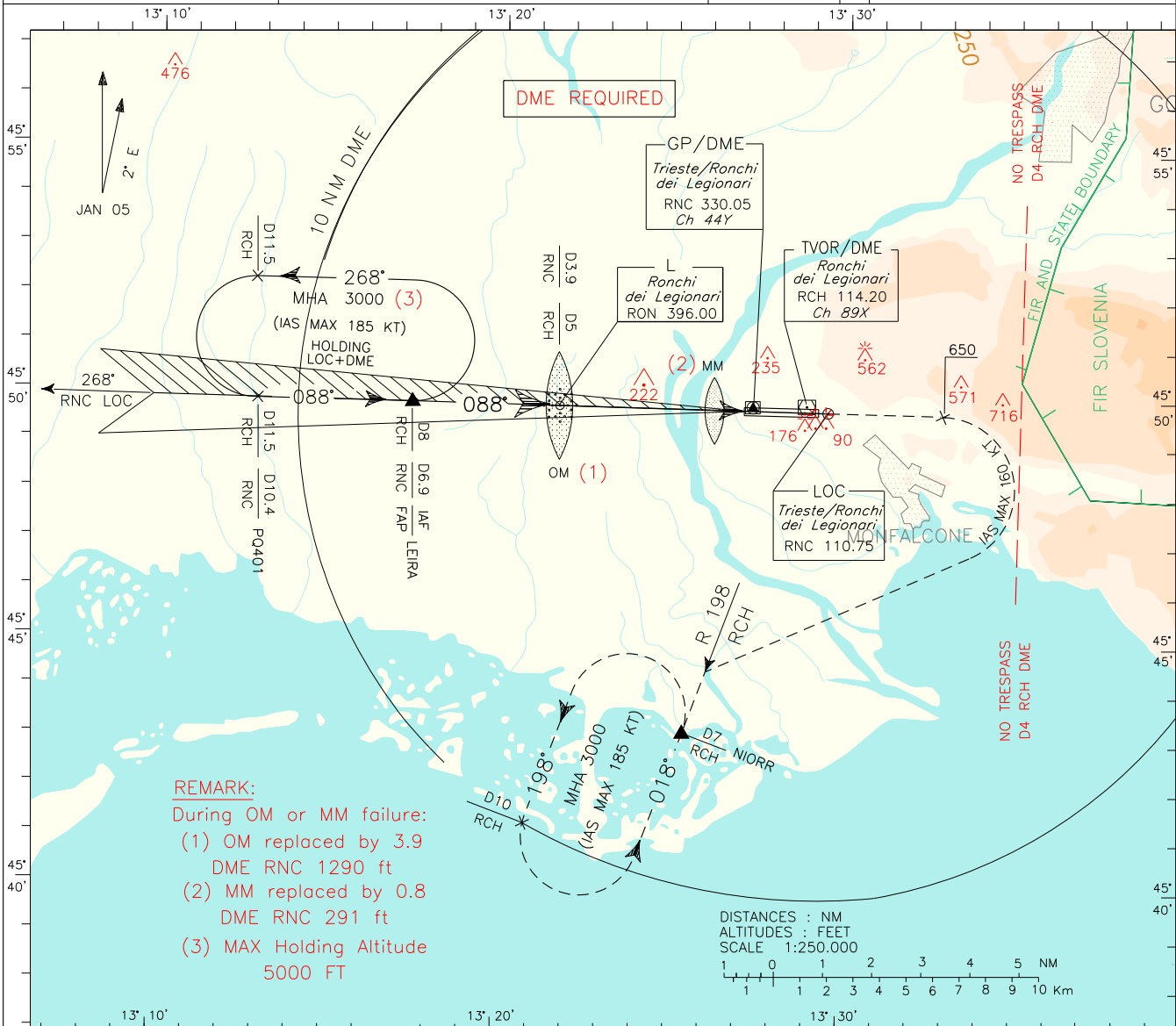
CHANGE: new VRP FOCE NATISSA (PQSW3); Ronchi dei Legionari ATZ, CTR and Padova CTA geography modified; APP Service updated



AIRSPACE CLASSIFICATION See AIP ENR 1.4	REMARK	WARNING
TRANSITION ALT 5000 FT		
ELEV AND ALT IN FT IF NOT OTHERWISE INDICATED		

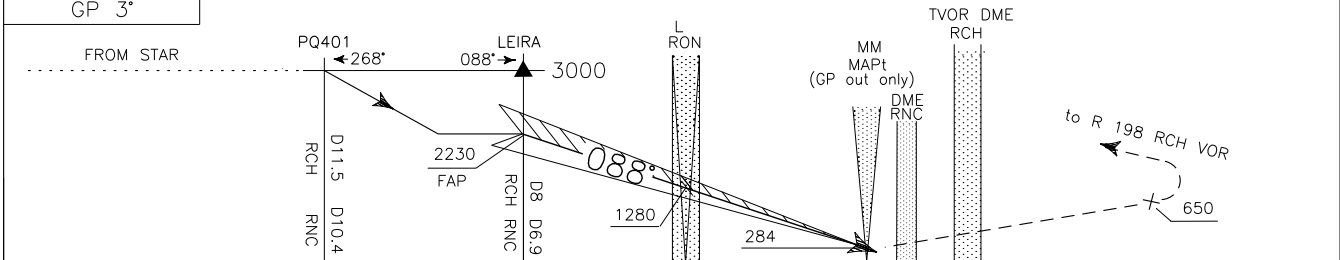
CHANGE: APP SERVICE UPDATED DOC.8168 ED.6 – 2014 – AMDT 7

APP	Padova Radar	119.175	AD ELEV	40	L LIQP Q	TRIESTE RONCHI DEI LEGIONARI ILS-Z RWY 09
TWR	Ronchi TWR	130.205				

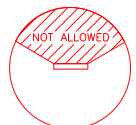


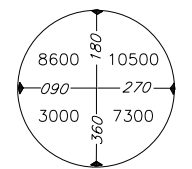
TRANSITION ALT 5000

Proceed on track 088° climbing to 3000 ft. Leaving 650 ft turn right (IAS MAX 160 kt during turn) to join and follow RDL 198 RCH VOR bound to NIORR holding pattern. Due to State boundary remain within 4 NM RCH DME during turn. Hold between D7 and D10 RCH DME.



D17	D16	D15	D14	D13	D12	D11	D10	D9	D8	D7	D6	D5	D4	D3	D2	D1	D1	D2	D3	D4	D5	D6
RCH DME											RCH DME											
RNC DME											RNC DME											

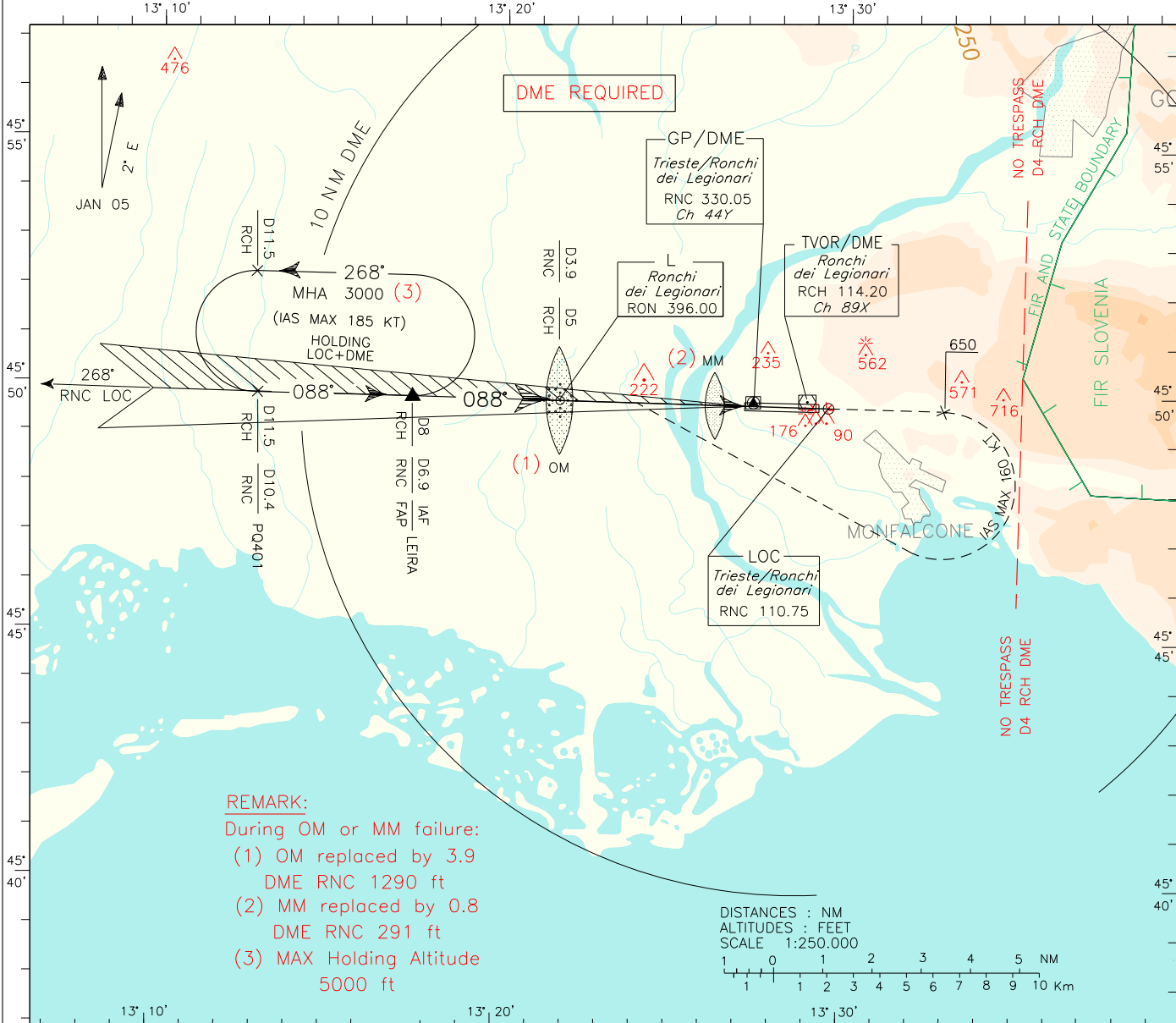
OCA (OCH)		A	B	C	D	(*) CIRCLING SECTOR: Only South of RWY: 	FT	GS	RON L-MM	MM-THR	MIN SECT ALT		
STRAIGHT IN APPROACH	M.A. 2.5% M.A. 3%	ILS CAT.1	280 (243)	290 (253)	300 (263)		310 (273)	PER				RCH	VOR
		ILS CAT.2	174 (137)	186 (149)	203 (166)	225 (188)	MIN		3.15 NM	0.60 NM			
		ILS CAT.1	217 (180)	227 (190)	237 (200)	247 (210)	425	80	2 : 22	0 : 27			
		ILS CAT.2	87 (50)	99 (62)	116 (79)	138 (101)	530	100	1 : 53	0 : 22			
GP INOP		480 (440)				635	120	1 : 35	0 : 18				
CIRCLING (*)		800 (760)		1170 (1130)	1360 (1320)	740	140	1 : 21	0 : 15				
						850	160	1 : 11	0 : 14				



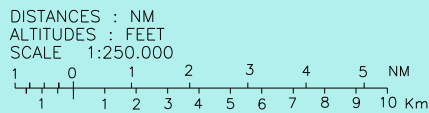
DOC.8168 ED.6 – 2014 – AMDT 7

CHANGE: APP SERVICE UPDATED

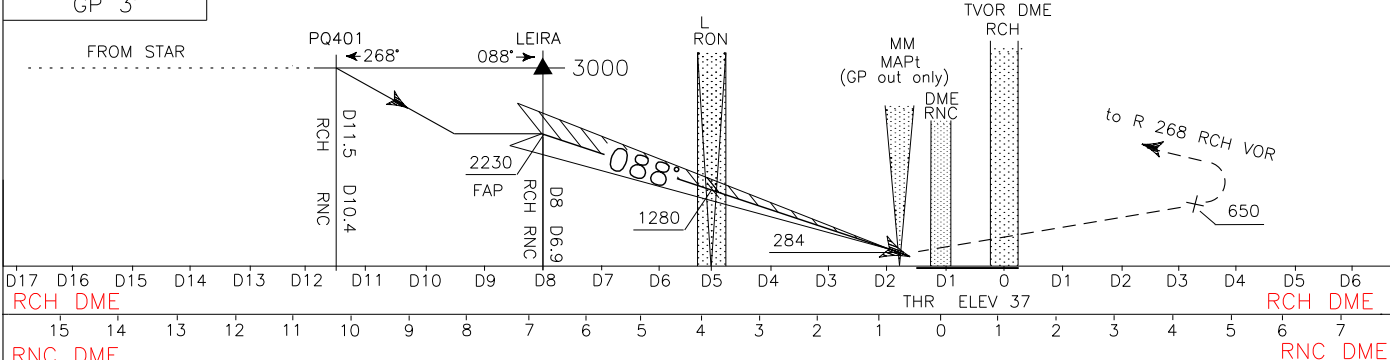
APP	Padova Radar	119.175	AD ELEV	40	L I P Q	TRieste RONCHI DEI LEGIONARI ILS-Y RWY 09 ATC DISCRETION
TWR	Ronchi TWR	130.205				



REMARK:
 During OM or MM failure:
 (1) OM replaced by 3.9 DME RNC 1290 ft
 (2) MM replaced by 0.8 DME RNC 291 ft
 (3) MAX Holding Altitude 5000 ft



TRANSITION ALT 5000
 RDH 17 M
 GP 3°
 Proceed on track 088° climbing to 3000 ft. Leaving 650 ft turn right (IAS MAX 160 kt during turn) to intercept and follow RDL 268 RCH VOR bound to LEIRA holding pattern. Due to State boundary, remain within 4 NM RCH DME during turn. Hold with left turn between D8 and D11.5 RCH DME.



OCA (OCH)		A	B	C	D	
STRAIGHT IN APPROACH	M.A. 2.5%	ILS CAT.1	280 (243)	290 (253)	300 (263)	310 (273)
		ILS CAT.2	174 (137)	186 (149)	203 (166)	225 (188)
	M.A. 3%	ILS CAT.1	217 (180)	227 (190)	237 (200)	247 (210)
		ILS CAT.2	87 (50)	99 (62)	116 (79)	138 (101)
GP INOP		480 (440)				
CIRCLING (*)		800 (760)		1170 (1130)	1360 (1320)	

(*) CIRCLING SECTOR:
 Only South of RWY:
 NOT ALLOWED

for CAT C/D ACFT remain within 4 NM RCH DME/ 5.1 NM RNC DME.

FT PER MIN	GS	MIN SECT ALT	
		RCH	VOR
425	80	2 : 22	0 : 27
530	100	1 : 53	0 : 22
635	120	1 : 35	0 : 18
740	140	1 : 21	0 : 15
850	160	1 : 11	0 : 14

DOC.8168 ED.6 – 2014 – AMDT 7

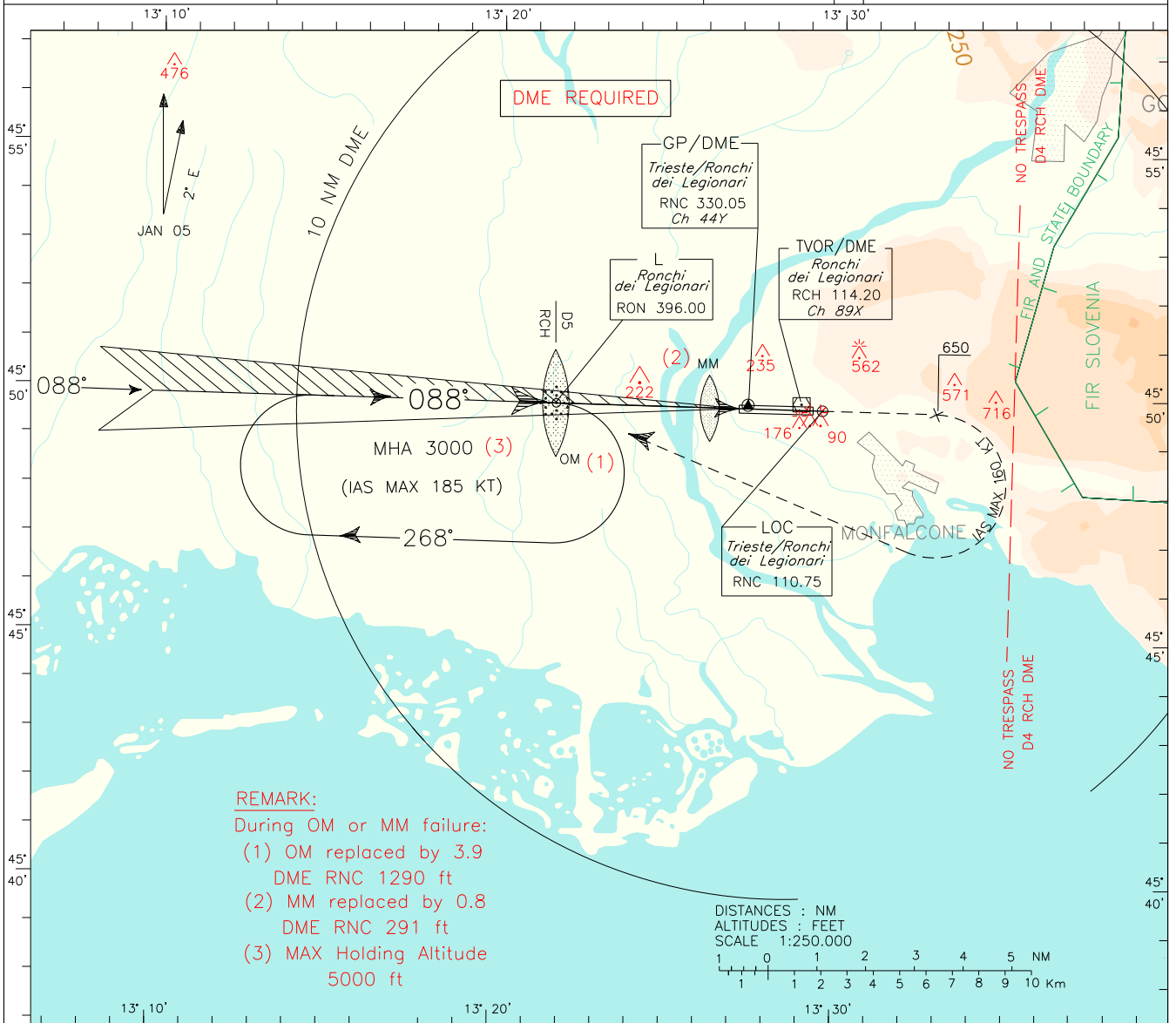
CHANGE: APP SERVICE UPDATED

APP *Padova Radar* 119.175
 TWR *Ronchi TWR* 130.205

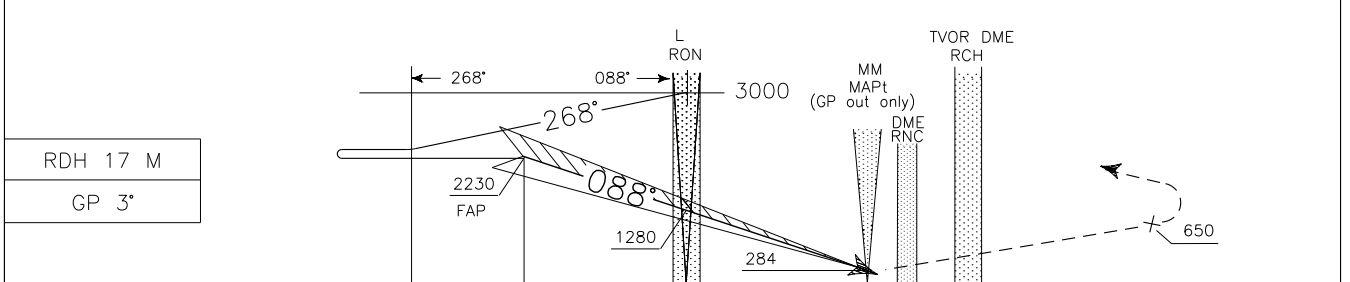
AD ELEV 40

LI PQ

TRieste
 RONCHI DEI LEGIONARI
 ILS-X RWY 09
 ATC DISCRETION



TRANSITION ALT 5000 MISSED APPROACH: Proceed on track 088° climbing to 3000 ft. Leaving 650 ft turn right (IAS MAX 160 kt during turn) bound to RON L holding pattern. Due to State boundary remain within 4 NM RCH DME during turn.



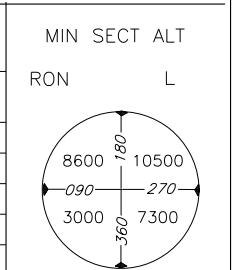
D17	D16	D15	D14	D13	D12	D11	D10	D9	D8	D7	D6	D5	D4	D3	D2	D1	D1	D2	D3	D4	D5	D6
RCH DME																	RCH DME					
RNC DME																	RNC DME					

OCA (OCH)		A	B	C	D	
STRAIGHT IN APPROACH	M.A. 2.5%	ILS CAT.1	280 (243)	290 (253)	300 (263)	310 (273)
		ILS CAT.2	174 (137)	186 (149)	203 (166)	225 (188)
	M.A. 3%	ILS CAT.1	217 (180)	227 (190)	237 (200)	247 (210)
		ILS CAT.2	87 (50)	99 (62)	116 (79)	138 (101)
GP INOP		480 (440)				

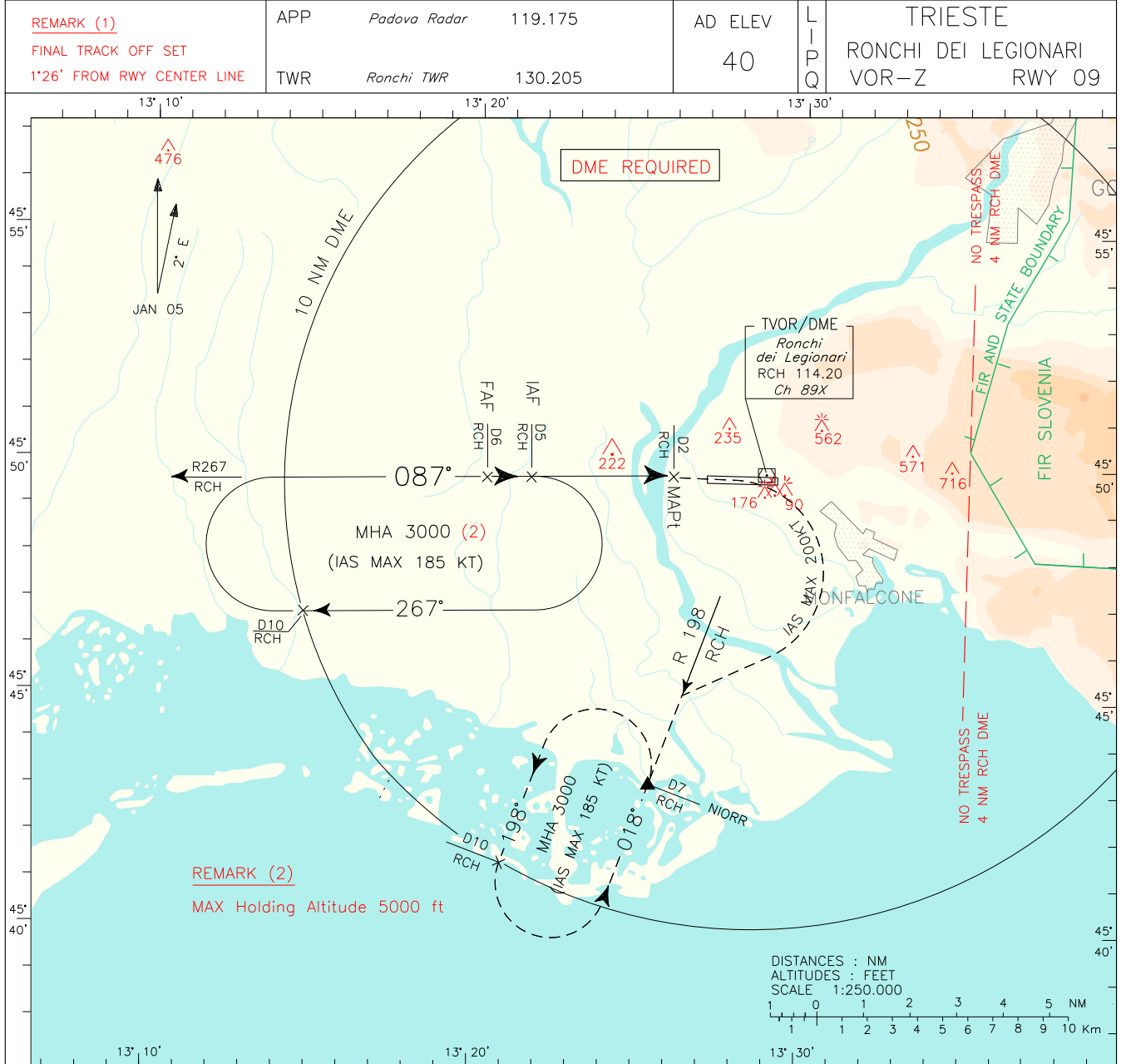
(*) CIRCLING SECTOR:
 Only South of RWY:

 for CAT C/D ACFT remain within 4 NM RCH DME.

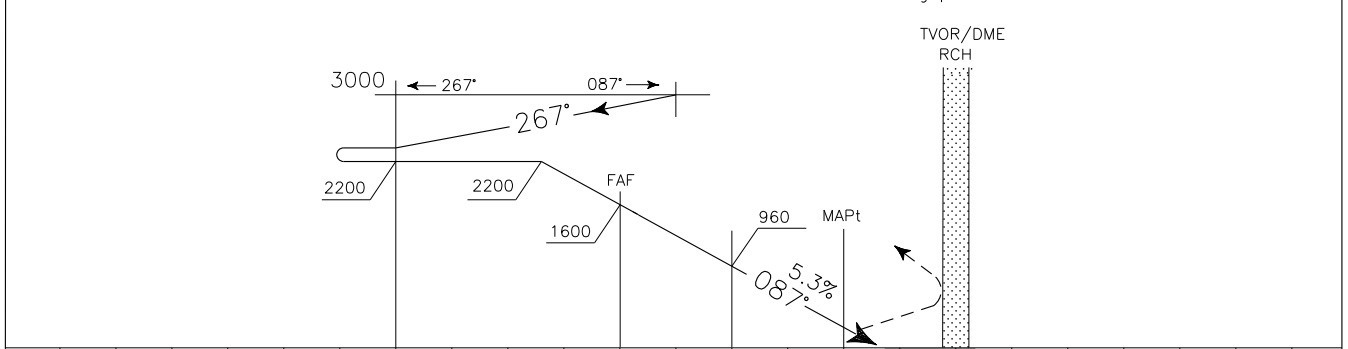
FT PER MIN	GS	RON L-MM		MM-THR
		3.15 NM	0.60 NM	
425	80	2 : 22	0 : 27	
530	100	1 : 53	0 : 22	
635	120	1 : 35	0 : 18	
740	140	1 : 21	0 : 15	
850	160	1 : 11	0 : 14	



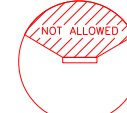
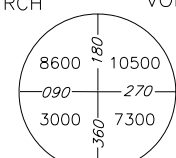
DOC.8168-ED.6-2014-AMDT 7
CHANGE: APP SERVICE UPDATED

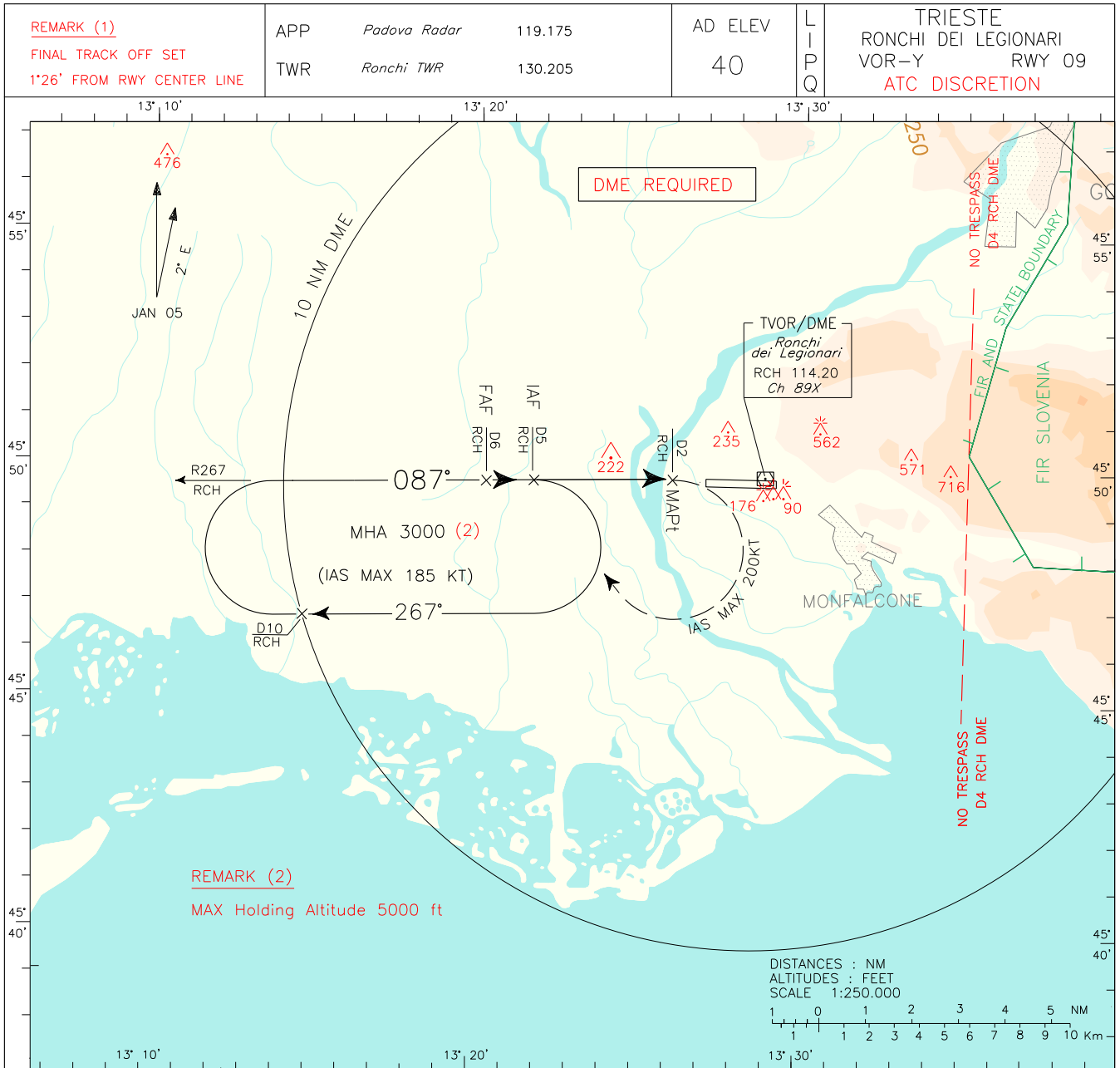


TRANSITION ALT 5000 MISSED APPROACH: Not later than 2 NM before RCH VORDME turn right (IAS MAX 200 kt), climbing to 3000 ft, to join and follow RDL 198 RCH VOR bound to NIORR holding pattern. Hold between D7 and D10 RCH DME.

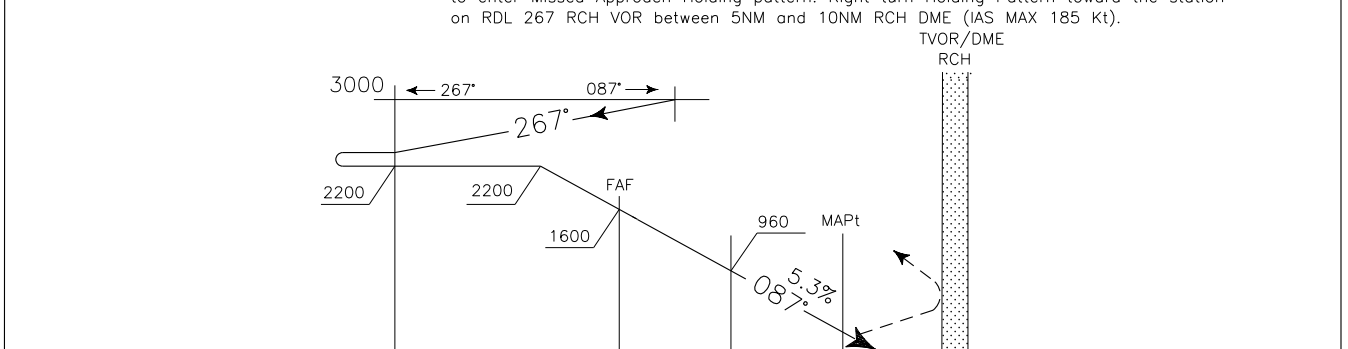


D16	D15	D14	D13	D12	D11	D10	D9	D8	D7	D6	D5	D4	D3	D2	D1	D1	D2	D3	D4	D5	D6	D7	D8
RCH DME															RCH DME								
15															15								
14															14								
13															13								
12															12								
11															11								
10															10								
9															9								
8															8								
7															7								
6															6								
5															5								
4															4								
3															3								
2															2								
1															1								
0															0								
ELEV 37															ELEV 37								
1															1								
2															2								
3															3								
4															4								
5															5								
6															6								
7															7								
8															8								
															NM								

OCA (OCH)		A	B	C	D	CIRCLING SECTORS: Only South of RWY  for CAT C/D ACFT remain within 4 NM RCH DME.	GS	FT PER MIN	FAF-MAPt	MAPt-THR	DME RCH	ALT (HGT)	MIN SECT ALT RCH VOR 
STRAIGHT IN APPROACH	VOR+DME	500 (460)					80	425	3 : 00	0 : 32	6	1600(1561)	
							100	535	2 : 24	0 : 26	5	1280(1241)	
							120	640	2 : 00	0 : 22	4	960(921)	
							140	745	1 : 42	0 : 18	3	640(601)	
CIRCLING (*)		700 (660)	1110 (1070)	1210 (1170)	160	855	1 : 30	0 : 16					



TRANSITION ALT 5000 MISSED APPROACH: Not later than 2 NM before RCH DME turn right (IAS MAX 200 kt), climbing to 3000 ft, to enter Missed Approach Holding pattern. Right turn Holding Pattern toward the station on RDL 267 RCH VOR between 5NM and 10NM RCH DME (IAS MAX 185 Kt).

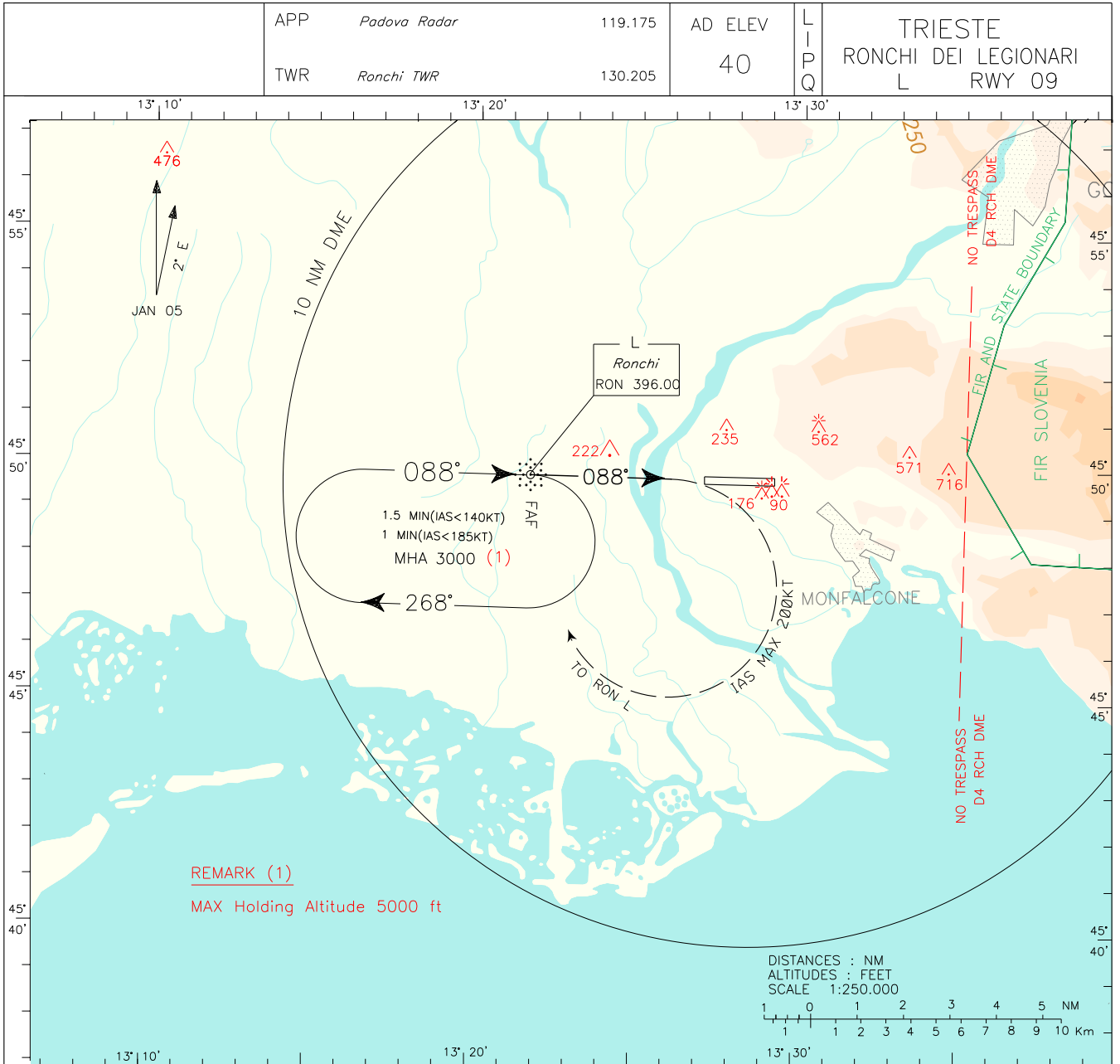


RCH DME	D16	D15	D14	D13	D12	D11	D10	D9	D8	D7	D6	D5	D4	D3	D2	D1	D1	D2	D3	D4	D5	D6	RCH DME	
	15	14	13	12	11	10	9	8	7	6	5	4	3	2	1	0	1	2	3	4	5	6	7	8
	NM																							

OCA (OCH)	A	B	C	D	CIRCLING SECTORS: Only South of RWY for CAT C/D ACFT remain within 4 NM RCH DME.	GS	FT PER MIN	FAF-MAPt	MAPt-THR	DME RCH	ALT (HGT)	MIN SECT ALT RCH	ALT VOR
STRAIGHT IN APPROACH	500 (460)					80	425	3 : 00	0 : 32	6	1600(1561)		
						100	535	2 : 24	0 : 26	5	1280(1241)		
						120	640	2 : 00	0 : 22	4	960(921)		
						140	745	1 : 42	0 : 18	3	640(601)		
CIRCLING (*)	700 (660)		1110 (1170) 1210 (1170)		160	855	1 : 30	0 : 16					

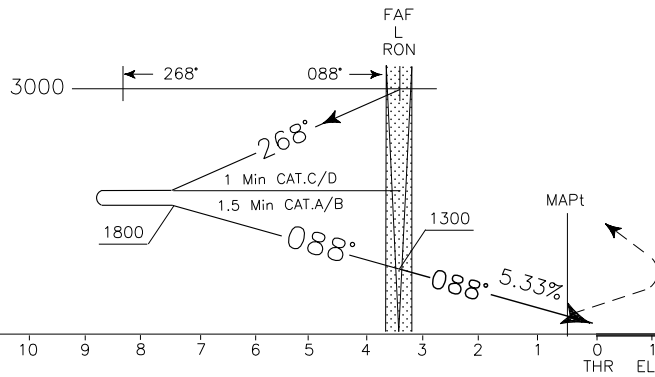
DOC.8168 ED.6 2014-AMDT 7

CHANGE: APP SERVICE UPDATED



TRANSITION ALT 5000

MISSED APPROACH: Turn right climbing to 3000 ft (IAS MAX 200 kt during turn) to RON L Holding Pattern.



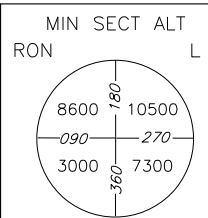
OCA (OCH)		A	B	C	D
STRAIGHT IN APPROACH	L	850 (810)			
CIRCLING (*)		900 (860)	1110 (1170)	1210 (1170)	

(*) CIRCLING SECTOR:
Only South of RWY:

NOT ALLOWED

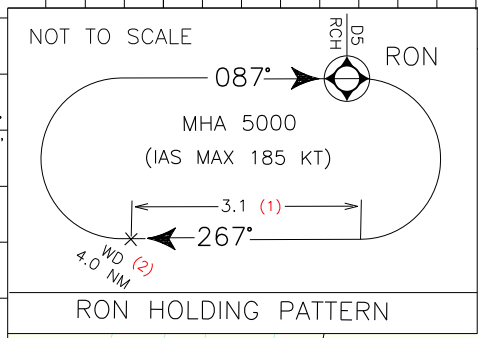
for CAT C/D ACFT remain within 4 NM RCH VOR DME.

FT PER MIN	GS	L-MAPt
430	80	2 : 15
540	100	1 : 48
650	120	1 : 30
755	140	1 : 17
865	160	1 : 07



APP	Padova Radar	119.175	AD ELEV	40	LIPQ	TRieste
TWR	Ronchi TWR	130.205				RONCHI DEI LEGIONARI RNP Z RWY 09

NOT STANDARD ICAO

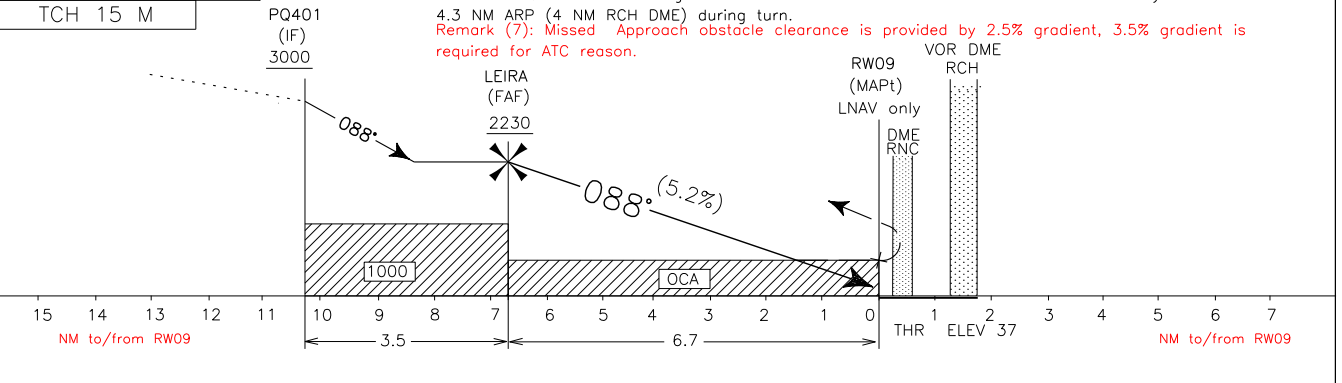


- REMARKS**
- (1) For RNAV system with holding functionality
 - (2) For RNAV system without holding functionality
 - (3) Fly-over for holding pattern only
 - (4) For uncompensated BARO – VNAV systems, LNAV/VNAV not authorized below -20°C and above 50°C
 - (5) Not to be used during LIGNANO Acrobatic area activation.
 - (6) Missed Approach first turn IAS MAX 160KT Not Standard ICAO for Cat D Aircraft

NEW CHART



TRANSITION ALT 5000 MISSED APPROACH: Proceed on TR 088 * climbing to 3000FT. At 530FT not before THR09 turn right (IAS MAX 160kt) on TR197* to PQ523 then turn right on TR238* to NIORR * to hold. Due to State boundary remain within 4.3 NM ARP (4 NM RCH DME) during turn.
Remark (7): Missed Approach obstacle clearance is provided by 2.5% gradient, 3.5% gradient is required for ATC reason.



OCA (OCH)		A	B	C	D	<p>(*) CIRCLING SECTOR: Only South of RWY:</p> <p>for CAT C/D ACFT remain within 4.3 NM ARP (4 NM RCH DME/ 5.1 NM RNC DME)</p>	FT PER MIN	GS	Distance to RWY 09	ALT (HGT)	MIN SECT ALT		
STRAIGHT IN APPROACH	LNAV/VNAV	530 (493)					425	80	6 NM	2000 (1963)		25NM	ARP
	LNAV	530 (493)					530	100	5 NM	1680 (1643)			
	CIRCLING (*)		700 (660)	1150 (1110)	1400 (1360)		635	120	4 NM	1360 (1323)			
					740	140	3 NM	1040 (1003)					
						850	160	2 NM	725 (688)				

TABULAR DESCRIPTION

RNP Z RWY 09 – Instrument Approach procedure

Serial Number	Path Terminator	Waypoint Identifier	Fly Over	Course °M (°T)	Magnetic Variation	Distance (NM)	Turn Direction	Altitude (ft)	Speed Limit (kt)	VPA (°)/TCH (ft)	Navigation Specification
010	IF	RON	-	-	-	-	-	+5000	-	-	RNP APCH
020	TF	PQ512	-	178° (180.0°)	-	5.0	-	+5000	-	-	RNP APCH
030	TF	PQ513	-	268° (270.3°)	-	6.5	-	+4000	200	-	RNP APCH
040	TF	PQ401	-	358° (000.3°)	-	5.0	R	+3000	200	-	RNP APCH
050	TF	LEIRA	-	088° (090.2°)	-	3.5	R	+2230	-	-	RNP APCH
060	TF	RW09	Y	088° (090.3°)	-	6.7	-	@87 (3)	160	-3.0/50	RNP APCH
070	CF	PQ523	-	197° (199.2°)	-	-	R	-	185	-	RNP APCH
080	TF	NIORR	-	238° (240.0°)	-	-	-	-	185	-	RNP APCH
090	HM	NIORR	Y	058° (060.0°)			L	+3000	185		RNAV 1

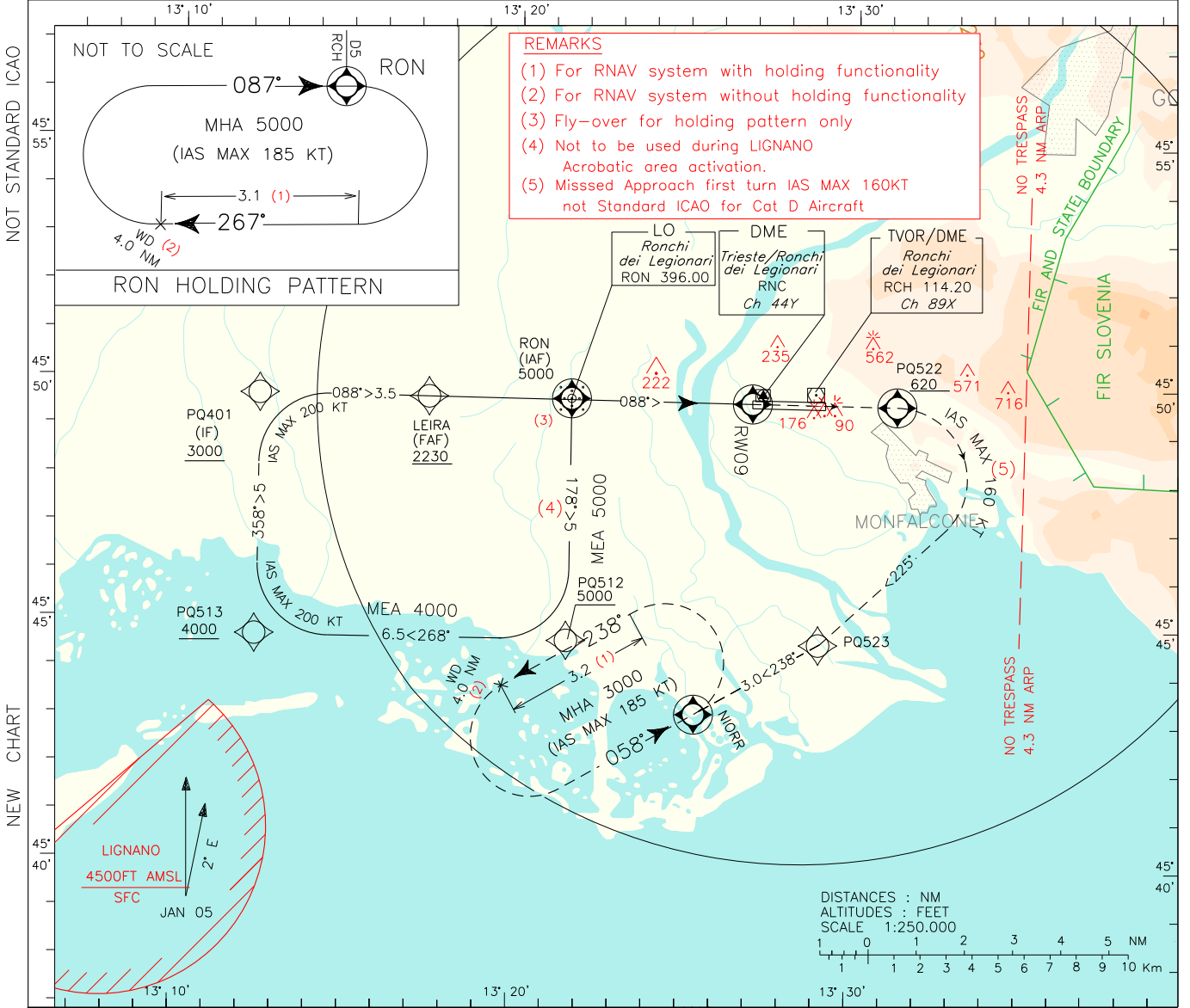
Path Terminator	Waypoint Identifier	Inbound Course °M (°T)	Leg Distance (NM) (1)	Timing(min./Waypoint Distance (NM) (2)	Turn Direction	Minimum Altitude (FT)	Maximum Altitude (FL)	Speed Limit (kt)	Magnetic Variation (°)	Navigation Specification
HM	RON	087°(089.0°)	3.1	- / 4.0	R	5000	-	185	2.0	RNAV 1
HM	NIORR	058° (060.0°)	3.2	- / 4.0	L	3000	4000	185	2.0	RNAV 1

- (1) RNAV system with holding functionality;
(2) RNAV system without holding functionality;
(3) THR Altitude plus TCH.

WAYPOINT LIST
RNP Z RWY 09

Waypoint Identifier	Coordinates
PQ401	45°49'44.2" N 013°12'22.0" E
PQ512	45°44'42.2" N 013°21'34.6" E
PQ513	45°44'44.2" N 013°12'20.0" E
PQ523	45°44'42.8" N 013°29'06.7" E

EGNOS E09A CH 84714	APP <i>Padova Radar</i> TWR <i>Ronchi TWR</i>	119.175 130.205	AD ELEV 40	LIPQ	TRIESTE RONCHI DEI LEGIONARI RNP Y RWY 09 (LPV only)
---------------------------	--	--------------------	---------------	------	--

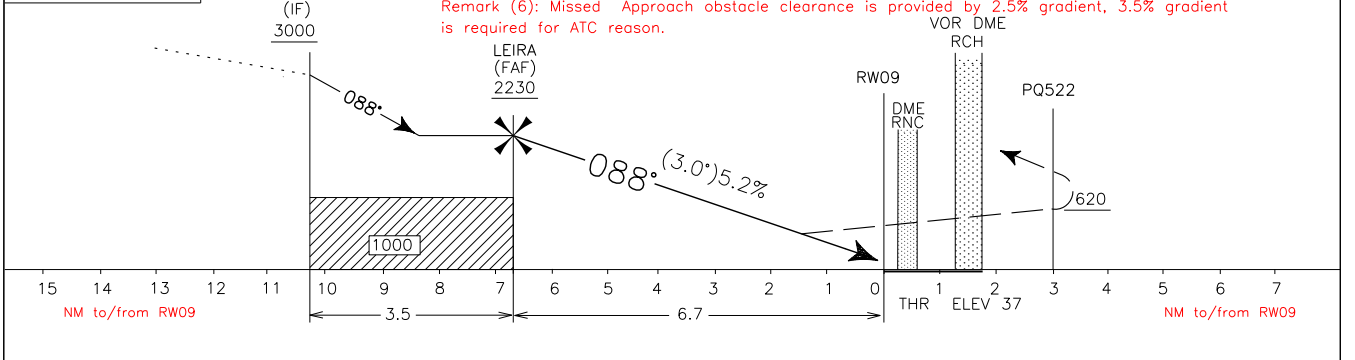


REMARKS

- (1) For RNAV system with holding functionality
- (2) For RNAV system without holding functionality
- (3) Fly-over for holding pattern only
- (4) Not to be used during LIGNANO Acrobatic area activation.
- (5) Missed Approach first turn IAS MAX 160KT not Standard ICAO for Cat D Aircraft

TRANSITION ALT 5000
TCH 17 M

MISSED APPROACH: Proceed on TR 088°, climbing to 3000 ft. At PQ522 to be reached at 620FT or above turn right (IAS MAX 160kt) on TR225° to PQ523 then turn right on TR 238° to NIORR to hold. Due to State boundary remain within 4.3 NM ARP (4 NM RCH DME) during turn.
Remark (6): Missed Approach obstacle clearance is provided by 2.5% gradient, 3.5% gradient is required for ATC reason.



OCA (OCH)		A	B	C	D	<p>(*) CIRCLING SECTOR: Only South of RWY:</p> <p>for CAT C/D ACFT remain within 4.3 NM ARP (4 NM RCH DME/ 5.1 NM RNC DME)</p>	<table border="1"> <tr> <th>FT</th> <th>GS</th> <th>Distance to RWY 09</th> <th>ALT (HGT)</th> </tr> <tr> <td>PER</td> <td>MIN</td> <td></td> <td></td> </tr> <tr> <td>425</td> <td>80</td> <td>6 NM</td> <td>2000 (1963)</td> </tr> <tr> <td>530</td> <td>100</td> <td>5 NM</td> <td>1680 (1643)</td> </tr> <tr> <td>635</td> <td>120</td> <td>4 NM</td> <td>1360 (1323)</td> </tr> <tr> <td>740</td> <td>140</td> <td>3 NM</td> <td>1040 (1003)</td> </tr> <tr> <td>850</td> <td>160</td> <td>2 NM</td> <td>725 (688)</td> </tr> </table>		FT	GS	Distance to RWY 09	ALT (HGT)	PER	MIN			425	80	6 NM	2000 (1963)	530	100	5 NM	1680 (1643)	635	120	4 NM	1360 (1323)	740	140	3 NM	1040 (1003)	850	160	2 NM	725 (688)	<table border="1"> <tr> <th colspan="2">MIN SECT ALT</th> </tr> <tr> <td>25NM</td> <td>ARP</td> </tr> <tr> <td colspan="2" style="text-align: center;"> </td> </tr> </table>		MIN SECT ALT		25NM	ARP		
FT	GS	Distance to RWY 09	ALT (HGT)																																									
PER	MIN																																											
425	80	6 NM	2000 (1963)																																									
530	100	5 NM	1680 (1643)																																									
635	120	4 NM	1360 (1323)																																									
740	140	3 NM	1040 (1003)																																									
850	160	2 NM	725 (688)																																									
MIN SECT ALT																																												
25NM	ARP																																											
STRAIGHT IN APPROACH	LPV	360 (323)																																										
CIRCLING (*)		700 (660)		1150 (1110)	1400 (1360)																																							

TABULAR DESCRIPTION

RNP Y RWY 09 – Instrument Approach procedure

Serial Number	Path Terminator	Waypoint Identifier	Fly Over	Course °M (°T)	Magnetic Variation	Distance (NM)	Turn Direction	Altitude (ft)	Speed Limit (kt)	VPA (°)/TCH (ft)	Navigation Specification
010	IF	RON	-	-	-	-	-	+5000	-	-	RNP APCH
020	TF	PQ512	-	178° (180.0°)	-	5.0	-	+5000	-	-	RNP APCH
030	TF	PQ513	-	268° (270.3°)	-	6.5	-	+4000	200	-	RNP APCH
040	IF	PQ401	-	358° (000.3°)	-	5.0	-	+3000	200	-	RNP APCH
050	TF	LEIRA	-	088° (090.2°)	-	3.5	R	+2230	-	-	RNP APCH
060	TF	RW09	Y	088° (090.3°)	-	6.7	-	@87 (3)	160	-3.0/50	RNP APCH
070	CF	PQ522	Y	088° (090.3°)	-	3	-	620	160	-	RNP APCH
080	CF	PQ523	-	225° (227.0°)	-	-	R	-	185	-	RNP APCH
090	TF	NIORR	-	238° (240.0°)	-	-	-	-	185	-	RNP APCH
100	HM	NIORR	Y	058° (060.0°)	-	-	L	+3000	185	-	RNAV 1

Path Terminator	Waypoint Identifier	Inbound Course °M (°T)	Leg Distance (NM) (1)	Timing(min.) / Waypoint Distance (NM) (2)	Turn Direction	Minimum Altitude (FT)	Maximum Altitude (FL)	Speed Limit (kt)	Magnetic Variation (°)	Navigation Specification
HM	RON	087°(089.0°)	3.1	- / 4.0	R	5000	-	185	2.0	RNAV 1
HM	NIORR	058° (060.0°)	3.2	- / 4.0	L	3000	4000	185	2.0	RNAV 1

- (1) RNAV system with holding functionality;
(2) RNAV system without holding functionality;
(3) THR Altitude plus TCH.

WAYPOINT LIST
RNP Y RWY 09

Waypoint Identifier	Coordinates
PQ401	45°49'44.2" N 013°12'22.0" E
PQ512	45°44'42.2" N 013°21'34.6" E
PQ513	45°44'44.2" N 013°12'20.0" E
PQ522	45°49'39.2" N 013°31'17.2" E
PQ523	45°44'42.8" N 013°29'06.7" E

SBAS FAS DATA BLOCK LIPQ RNP RWY 09

INPUT DATA	
PARAMETERS	VALUES
Operation Type	0
SBAS Provider	1 (EGNOS)
Airport Identifier	LIPQ
Runway	09
Runway Letter	0 (None)
Approach Performance Designator	0
Route Indicator	Y
Reference Path Data Selector	0
Reference Path Identifier	E09A
LTP/FTP Latitude	454940.6320N
LTP/FTP Longitude	0132659.7325E
LTP/FTP Ellipsoidal Height (metres)	55.4
FPAP Latitude	454939.9475N
Delta FPAP Latitude (seconds)	-0.6845
FPAP Longitude	0132909.4925E
Delta FPAP Longitude (seconds)	129.7600
Threshold Crossing Height	15.00
TCH Units Selector	1 (meters)
Glidepath Angle (degrees)	3.00
Course Width (metres)	105.00
Length Offset (metres)	0
HAL (metres)	40.0
VAL (metres)	35.0

OUTPUT DATA	
Data Block	10 11 10 09 0C 09 C8 00 01 39 30 05 30 CF AA 13 29 A7 C5 05 2A 16 A7 FA FF C0 F5 03 2C 81 2C 01 64 00 C8 AF 72 9C C4 CC
Calculated CRC Value	729CC4CC

Required Additional Data (not CRC wrapped)

Parameters	Values
ICAO Code	LI
LTP/FTP Orthometric Height (metres)	11.2

Intenzionalmente bianca

Intentionally left blank