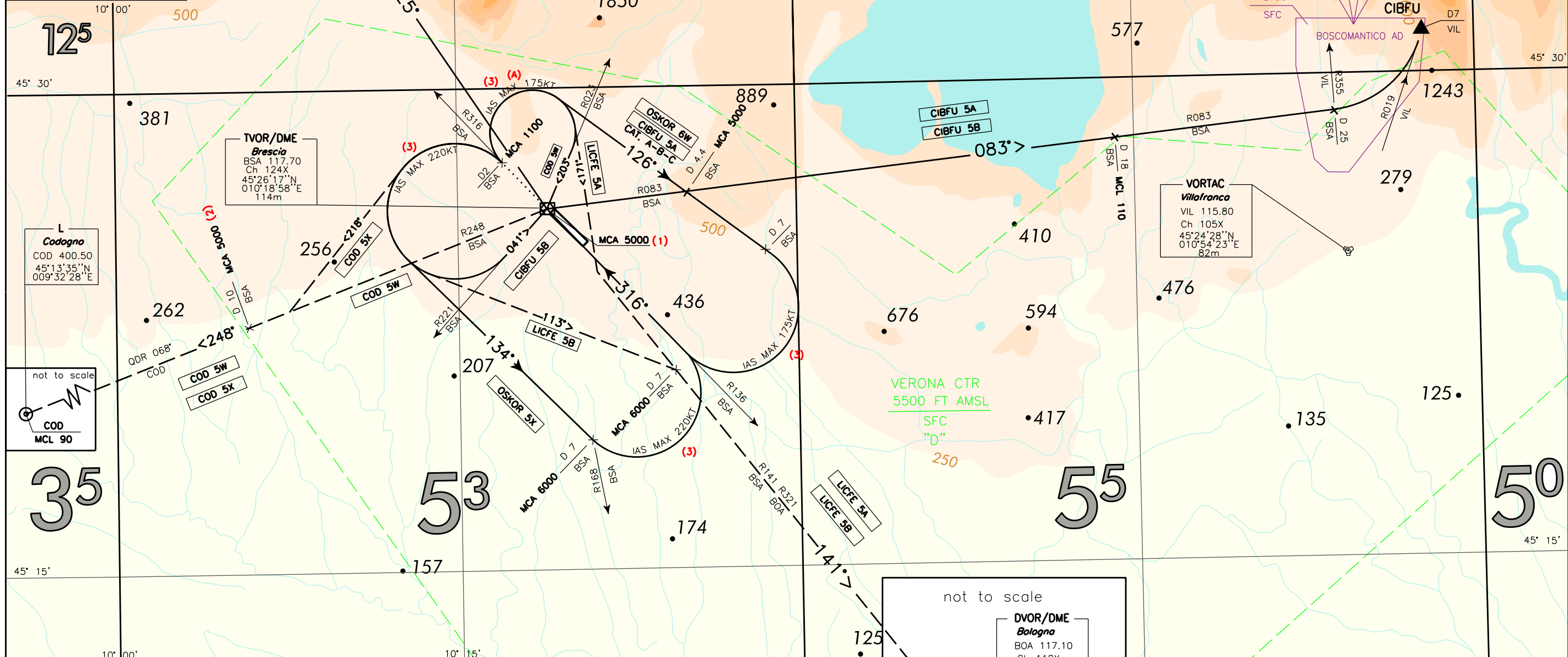


DOC 8168 ED. 6 - 2014

FREQUENCIES	
TWR Montichiari TWR	CH 119.405 122.100
APP Milano Radar	135.900 (124.250)
LEGEND	
Initial Climb	.....>
SID	————>
SID ATC Discretion	- - - - ->
Not to Scale	⚡



CHANGE: REPRINTING

MNM SECT ALT BSA VOR	
9800	095 - 275
2400	
REMARK:	
(1) MCL 90 over BSA VOR/DME for OSKOR 6W and OSKOR 5X	
(2) for COD 5X only	
(3) Minimum bank angle 20°	
WARNING:	
(A) CIBFU 5A, LICFE 5A, COD 5W and OSKOR 6W are partially carried out outside controlled airspace	

not to scale

DVOR/DME Bologna  
BOA 117.10  
Ch 118X  
44°32'13"N  
011°17'26"E  
4.3m

LICFE D 49 BSA

MCL 130

BOA

BRESCIA MONTICHIARI	SID RWY32
TRANSITION ALT 6000	

**INITIAL CLIMB DESCRIPTION RWY 32**

Proceed on RDL 316 BSA VOR (TR 316°) until 2NM BSA DME

MCA: RDL 316/2NM BSA VOR/DME 1100 FT

Minimum climb gradient:

- 300 ft/NM (4.9%) until passing 6000 ft due to obstacles;
- 365 ft/NM (6.0%) until passing FL90 (450 ft/NM – 7.4% for SID CIBFU 5A and CIBFU 5B until passing FL110) for ATC reasons.

For the following SID: CIBFU 5A – LICFE 5A – COD 5W – OSKOR 6W execute all turns with IAS MAX 175 kt and 20° minimum bank angle.

For the following SID: CIBFU 5B – LICFE 5B - COD 5X - OSKOR 5X execute all turns with IAS MAX 220 kt and 20° minimum bank angle.

**SID DESCRIPTION RWY 32**

Initial climb procedure executed:

**CIBFU 5A (CAT A-B-C)**

Turn right on TR 126° to intercept and follow RDL 083 BSA VOR (TR 083°). Crossing RDL 355 VIL VORTAC turn left to intercept and follow RDL 019 VIL VORTAC (TR 019°) bound to CIBFU (RDL 019/7NM VIL VORTAC), climbing to the assigned FL.

MCA/MCL: RDL 083/4.4NM BSA VOR/DME 5000 FT; RDL 083/18NM BSA VOR/DME FL 110.

**CIBFU 5B**

Turn left on RDL 221 BSA VOR (TR 041°) bound to BSA VOR, to be left on RDL 083 BSA VOR (TR 083°). Crossing RDL 355 VIL VORTAC turn left to intercept and follow RDL 019 VIL VORTAC (TR 019°) bound to CIBFU (RDL 019/7NM VIL VORTAC), climbing to the assigned FL.

MCA/MCL: BSA VOR/DME 5000 FT; RDL 083/18NM BSA VOR/DME FL 110.

**COD 5X (ATC discretion)**

Turn left on TR 218° to intercept and follow RDL 248 BSA VOR (QDR 068 COD L), TR 248°, bound to COD L, climbing to the assigned FL.

MCA/MCL: RDL 248/10NM BSA VOR/DME 5000 FT; COD L FL 90.

**COD 5W (CAT A-B-C) ATC discretion**

Turn right on RDL 023 BSA VOR (TR 203°) bound to BSA VOR, to be left on RDL 248 BSA VOR (QDR 068 COD L), TR 248°, bound to COD L, climbing to the assigned FL.

MCA/MCL: BSA VOR/DME 5000 FT; COD L FL 90.

**LICFE 5B (ATC discretion)**

Turn left on TR 113° to intercept and follow RDL 141 BSA VOR (RDL 321 BOA VOR), TR 141°, bound to LICFE, climbing to the assigned FL.

MCA: RDL 141/7NM BSA VOR/DME 6000 FT; LICFE FL 130

**LICFE 5A (CAT A-B-C) ATC discretion**

Turn right on TR 171° to intercept and follow RDL 141 BSA VOR (RDL 321 BOA VOR), TR 141°, bound to LICFE, climbing to the assigned FL.

MCA: RDL 141/7NM BSA VOR/DME 6000 FT; LICFE FL 130

**OSKOR 5X**

Turn left on TR 134°. Crossing RDL 168 BSA VOR (in any case within 7NM BSA DME) turn left on RDL 136 BSA VOR (TR 316°) bound to BSA VOR to be left on RDL 325 BSA VOR (TR 325°) bound to OSKOR (RDL 325/15NM BSA VOR/DME), climbing to the assigned FL.

MCA/MCL: RDL 168/7NM BSA VOR/DME 6000 FT; BSA VOR/DME FL 90; OSKOR FL 110.

**OSKOR 6W (CAT A-B-C)**

Turn right on TR 126°. Crossing RDL 101 BSA VOR (in any case within 7NM BSA DME) turn right on RDL 136 BSA VOR (TR 316°) bound to BSA VOR to be left on RDL 325 BSA VOR (TR 325°) bound to OSKOR (RDL 325/15NM BSA VOR/DME), climbing to the assigned FL.

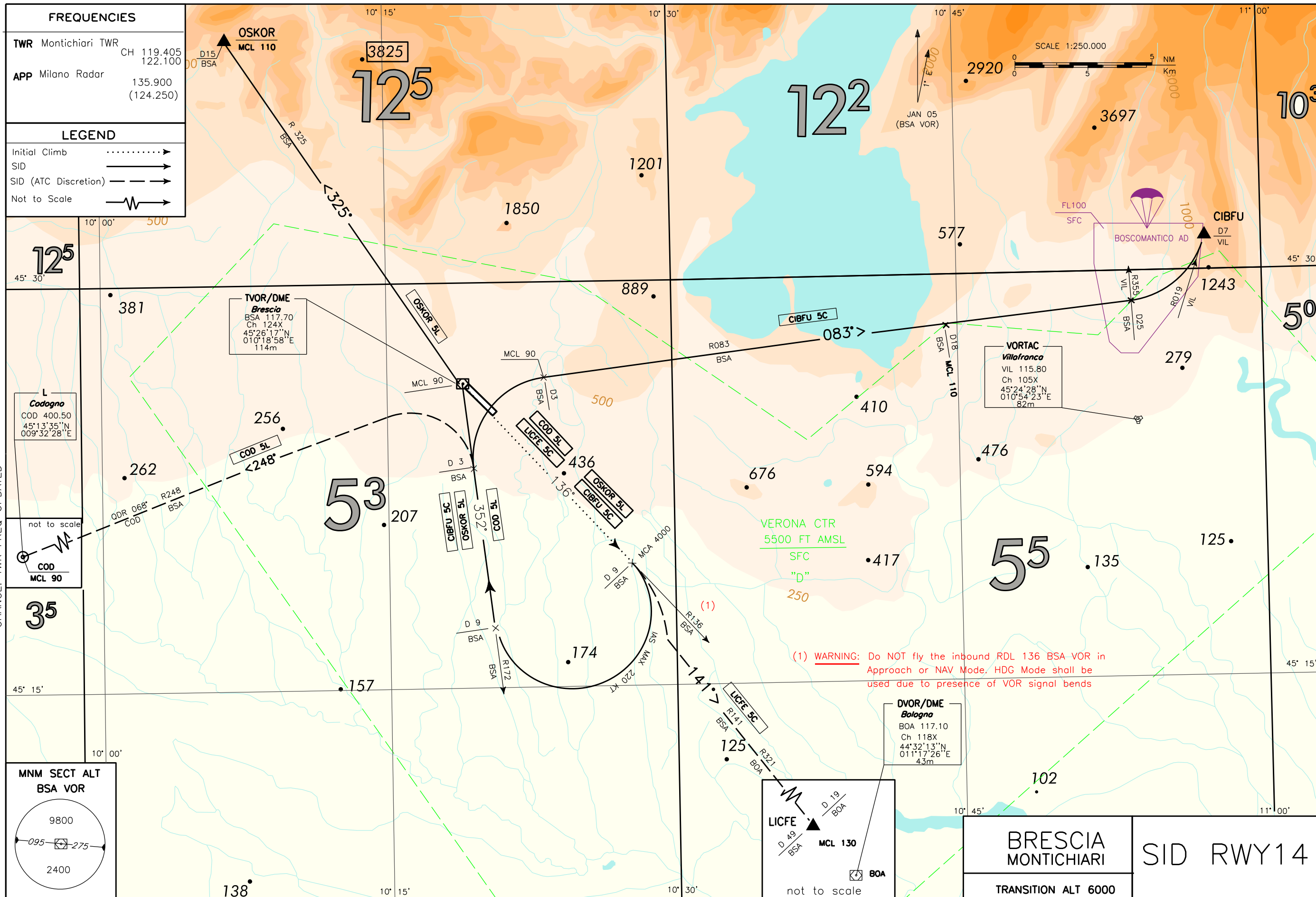
MCA/MCL: RDL 083/4.3NM BSA VOR/DME 5000 FT; BSA VOR/DME FL 90; OSKOR FL 110.

Intenzionalmente bianca

*Intentionally left blank*

DOC 8168 ED. 6 - 2014

CHANGE: TWR FREQ UPDATED



**INITIAL CLIMB DESCRIPTION RWY 14**

Proceed on RDL 136 BSA VOR (TR 136°) until 9 NM BSA DME

Execute all turns with IAS MAX 220 kt and 20° minimum bank angle

Minimum climb gradient:

- 350 ft/NM (5.76%) until passing 4000 ft due to obstacles;
- 500 ft/NM (8.2%) until passing 4000 ft for ATC reasons.

**SID DESCRIPTION RWY 14**

Initial climb procedure executed:

**CIBFU 5C**

Turn right until joining RDL 172 BSA VOR (TR 352°). At 3NM BSA DME turn right on RDL 083 BSA VOR. Crossing RDL 355 VIL VORTAC turn left to intercept and follow RDL 019 VIL VORTAC (TR 019°) bound to CIBFU (RDL 019/7NM VIL VORTAC), climbing to the assigned FL.

MCA/MCL: RDL 136/9NM BSA VOR/DME 4000 FT; RDL 083/3 NM BSA VOR/DME: FL90; RDL 083/18 NM BSA VOR/DME: FL110

**COD 5L (ATC discretion)**

Turn right until joining RDL 172 BSA VOR (TR 352°). At 3NM BSA DME turn left to intercept and follow RDL 248 BSA VOR (QDR 068 COD L), TR 248°, bound to COD L, climbing to the assigned FL.

MCA/MCL: RDL 136/9NM BSA VOR/DME 4000 FT; COD L FL 90

**LICFE 5C (ATC discretion)**

Turn right to intercept and follow RDL 141 BSA VOR (RDL 321 BOA VOR) TR 141° bound to LICFE, climbing to the assigned FL.

MCA/MCL: RDL 136/9NM BSA VOR/DME 4000 FT; LICFE FL 130

**OSKOR 5L**

Turn right until joining RDL 172 BSA VOR (TR 352°) bound to BSA VOR, to be left on RDL 325 BSA VOR (TR 325°) bound to OSKOR (RDL 325/15NM BSA VOR/DME), climbing to the assigned FL.

MCA/MCL: RDL 136/9NM BSA VOR/DME 4000 FT; BSA VOR/DME: FL90; OSKOR: FL 110

Intenzionalmente bianca

*Intentionally left blank*



**SID RNAV 1 RWY 32 BRESCIA/Montichiari CAT D (CAT A-B-C ATC Discretion)****Initial climb description**

After take-off proceed on TR 314° until PO601 (2NM BSA DME), then turn left on track 134° to join the assigned SID.

Minimum climb gradient:

- 300 ft/NM (4.9%) until passing 6000 ft due to obstacles;
- 365 ft/NM (6.0%) until passing FL90 for ATC reasons.

Execute the turn with:

- 20° minimum bank angle;
- IAS MAX 220 KT

**SID description**

Initial climb procedure executed:

**AVCUP 5A (ATC Discretion)**

Path Terminator	WPT name	Fly Over	Track °Mag	Turn Direction	Altitude Constraint	Speed Limit (IAS)	Recommended Navaid	Bearing/ Range to Navaid	Navigation Performance
CF	PO601	Y	314°	-	+1100	220	-	-	RNAV 1
DF	PO603	-	-	L	+6000	220	-	-	RNAV 1
TF	AVCUP	-	138°	-	+FL130	-	-	-	RNAV 1

**COD 5V (ATC Discretion)**

Path Terminator	WPT name	Fly Over	Track °Mag	Turn Direction	Altitude Constraint	Speed Limit (IAS)	Recommended Navaid	Bearing/ Range to Navaid	Navigation Performance
CF	PO601	Y	314°	-	+1100	220	-	-	RNAV 1
DF	PO603	-	-	L	+6000	220	-	-	RNAV 1
TF	PO604	-	263°	-	-	-	-	-	RNAV 1
TF	COD	-	263°	-	+FL90	-	-	-	RNAV 1

**EXFIN 5A**

Path Terminator	WPT name	Fly Over	Track °Mag	Turn Direction	Altitude Constraint	Speed Limit (IAS)	Recommended Navaid	Bearing/ Range to Navaid	Navigation Performance
CF	PO601	Y	314°	-	+1100	220	-	-	RNAV 1
DF	PO603	-	-	L	+6000	220	-	-	RNAV 1
TF	PO607	-	063°	-	+FL110	-	-	-	RNAV 1
TF	EXFIN	-	063°	-	-	-	VIL VORTAC	RDL019/D5	RNAV 1

**ETHEZ 5A (ATC Discretion)**

Path Terminator	WPT name	Fly Over	Track °Mag	Turn Direction	Altitude Constraint	Speed Limit (IAS)	Recommended Navaid	Bearing/ Range to Navaid	Navigation Performance
CF	PO601	Y	314°	-	+1100	220	-	-	RNAV 1
DF	PO603	-	-	L	+6000	220	-	-	RNAV 1
TF	ETHEZ	-	117°	-	+FL95	-	-	-	RNAV 1

**OSBUL 5V**

Path Terminator	WPT name	Fly Over	Track °Mag	Turn Direction	Altitude Constraint	Speed Limit (IAS)	Recommended Navaid	Bearing/ Range to Navaid	Navigation Performance
CF	PO601	Y	314°	-	+1100	220	-	-	RNAV 1
DF	PO603	-	-	L	+6000	220	-	-	RNAV 1
TF	OSBUL	-	186°	-	+FL90	-	-	-	RNAV 1

**OSKOR 5V**

Path Terminator	WPT name	Fly Over	Track °Mag	Turn Direction	Altitude Constraint	Speed Limit (IAS)	Recommended Navaid	Bearing/ Range to Navaid	Navigation Performance
CF	PO601	Y	314°	-	+1100	220	-	-	RNAV 1
DF	PO603	-	-	L	+6000	220	-	-	RNAV 1
TF	PO604	-	263°	R	-	220	-	-	RNAV 1
TF	OSKOR	-	009°	R	+FL110	-	-	-	RNAV 1



**UGHAD 5A**

Path Terminator	WPT name	Fly Over	Track °Mag	Turn Direction	Altitude Constraint	Speed Limit (IAS)	Recommended Navaid	Bearing/ Range to Navaid	Navigation Performance
CF	PO601	Y	314°	-	+1100	220	-	-	RNAV 1
DF	PO603	-	-	L	+6000	220	-	-	RNAV 1
TF	UGHAD	-	098°	-	+FL95	-	-	-	RNAV 1

**Waypoints Table formatted according ARINC 424 standards**

Waypoint	Latitude	Longitude
PO601	N45274437	E010170028
PO603	N45174094	E010224682
PO604	N45155688	E010005760
PO607	N45251423	E010451046



**SID RNAV 1 RWY 32 BRESCIA/Montichiari (CAT A-B-C)****Initial climb description**

After take-off proceed on TR 314° until PO601 (2NM BSA DME), then turn right on track 125° to join the assigned SID.

Minimum climb gradient:

- 300 ft/NM (4.9%) until passing 6000 ft due to obstacles;
- 365 ft/NM (6.0%) until passing FL90 (8.2% until passing FL 110 for SID EXFIN 5B) for ATC reasons.

Execute the turn with:

- 20° minimum bank angle;
- IAS MAX 175 KT

**SID description**

Initial climb procedure executed:

**ADXEF 5A**

Path Terminator	WPT name	Fly Over	Track °Mag	Turn Direction	Altitude Constraint	Speed Limit (IAS)	Recommended Navaid	Bearing/Range to Navaid	Navigation Performance
CF	PO601	Y	314°	-	+1100	-	-	-	RNAV 1
DF	PO602	-	-	R	+6000	175	-	-	RNAV 1
TF	ADXEF	-	105°	-	+FL95	-	-	-	RNAV 1

**AFNEW 5A (ATC Discretion)**

Path Terminator	WPT name	Fly Over	Track °Mag	Turn Direction	Altitude Constraint	Speed Limit (IAS)	Recommended Navaid	Bearing/Range to Navaid	Navigation Performance
CF	PO601	Y	314°	-	+1100	-	-	-	RNAV 1
DF	PO602	-	-	R	+6000	175	-	-	RNAV 1
TF	AFNEW	-	146°	-	+FL130	-	-	-	RNAV 1

**EXFIN 5B**

Path Terminator	WPT name	Fly Over	Track °Mag	Turn Direction	Altitude Constraint	Speed Limit (IAS)	Recommended Navaid	Bearing/Range to Navaid	Navigation Performance
CF	PO601	Y	314°	-	+1100	-	-	-	RNAV 1
DF	PO602	-	-	R	+6000	175	-	-	RNAV 1
TF	PO611	-	072°	-	+FL110	-	-	-	RNAV 1
TF	EXFIN	-	072°	-	-	-	VIL VORTAC	RDL019/D5	RNAV 1

**COD 5U (ATC Discretion)**

Path Terminator	WPT name	Fly Over	Track °Mag	Turn Direction	Altitude Constraint	Speed Limit (IAS)	Recommended Navaid	Bearing/Range to Navaid	Navigation Performance
CF	PO601	Y	314°	-	+1100	-	-	-	RNAV 1
DF	PO602	-	-	R	+6000	175	-	-	RNAV 1
TF	PO603	-	224°	R	-	220	-	-	RNAV 1
TF	PO604	-	263°	R	-	-	-	-	RNAV 1
TF	COD	-	263°	-	+FL90	-	-	-	RNAV 1

**OSBUL 5B**

Path Terminator	WPT name	Fly Over	Track °Mag	Turn Direction	Altitude Constraint	Speed Limit (IAS)	Recommended Navaid	Bearing/Range to Navaid	Navigation Performance
CF	PO601	Y	314°	-	+1100	-	-	-	RNAV 1
DF	PO602	-	-	R	+6000	175	-	-	RNAV 1
TF	PO603	-	224°	R	-	220	-	-	RNAV 1
TF	OSBUL	-	186°	L	+FL90	-	-	-	RNAV 1

**OSKOR 5U**

Path Terminator	WPT name	Fly Over	Track °Mag	Turn Direction	Altitude Constraint	Speed Limit (IAS)	Recommended Navaid	Bearing/Range to Navaid	Navigation Performance
CF	PO601	Y	314°	-	+1100	-	-	-	RNAV 1
DF	PO602	-	-	R	+6000	175	-	-	RNAV 1
TF	PO603	-	224°	R	-	220	-	-	RNAV 1
TF	PO604	-	263°	R	-	220	-	-	RNAV 1
TF	OSKOR	-	009°	R	+FL110	220	-	-	RNAV 1

**PIQUZ 5A (ATC Discretion)**

Path Terminator	WPT name	Fly Over	Track °Mag	Turn Direction	Altitude Constraint	Speed Limit (IAS)	Recommended Navaid	Bearing/ Range to Navaid	Navigation Performance
CF	PO601	Y	314°	-	+1100	-	-	-	RNAV 1
DF	PO602	-	-	R	+6000	175	-	-	RNAV 1
TF	PIQUZ	-	125°	-	+FL95	-	-	-	RNAV 1

**Waypoints Table formatted according ARINC 424 standards**

Waypoint	Latitude	Longitude
PO601	N45274437	E010170028
PO602	N45233274	E010310813
PO603	N45174094	E010224682
PO604	N45155688	E010005760
PO611	N45262890	E010443703

DOC 8168 ED. 6 - 2014

CHANGE: TWR FREQ UPDATED

FREQUENCIES	
TWR	Montichiari TWR CH 119.405 122.100
APP	Milano Radar 135.900 (124.250)

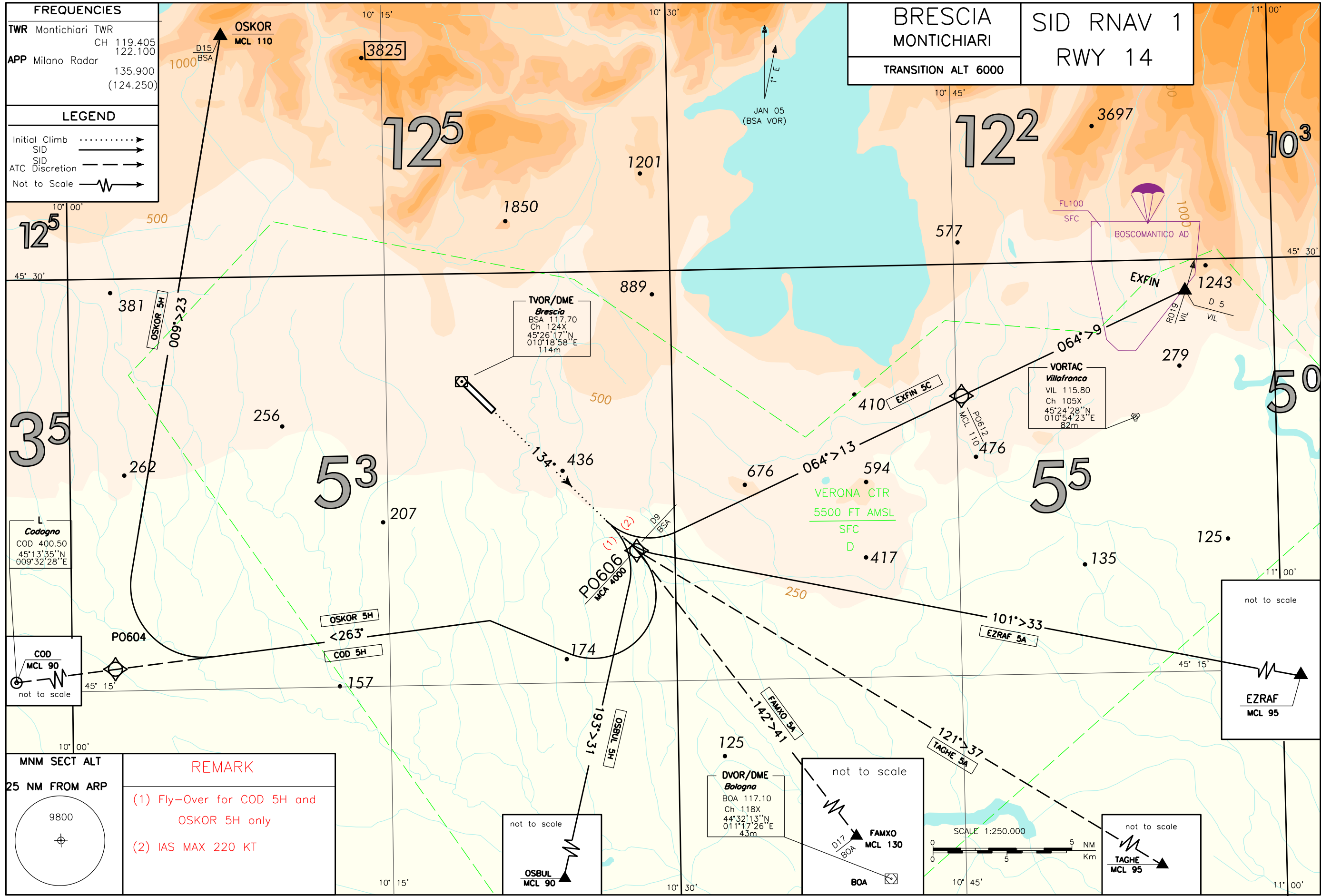
LEGEND	
Initial Climb	.....>
SID	————>
SID	- - - ->
ATC Discretion	- - - ->
Not to Scale	~~~~~>

MNM SECT ALT	
25 NM FROM ARP	9800

REMARK	
(1) Fly-Over for COD 5H and OSKOR 5H only	
(2) IAS MAX 220 KT	

OSKOR MCL 110	3825
------------------	------

BRESCIA MONTICHIARI	
TRANSITION ALT 6000	SID RNAV 1 RWY 14



**SID RNAV 1 RWY 14 BRESCIA/Montichiari****Initial climb description**

After take-off proceed on TR 134° until PO606 (9 NM BSA DME), then join the assigned SID.

Minimum climb gradient:

- 350 ft/NM (5.8%) until passing 4000 ft due to obstacles;
- 500 ft/NM (8.2%) until passing 4000 ft (8.7% until passing FL110 for SID EXFIN 5C) for ATC reasons.

Execute all turns with IAS MAX 220 kt and 20° bank angle.

**SID description**

Initial climb procedure executed:

**COD 5H (ATC discretion)**

Path Terminator	WPT name	Fly Over	Track °Mag	Turn Direction	Altitude Constraint	Speed Limit (IAS)	Recommended Navaid	Bearing/ Range to Navaid	Navigation Performance
CF	PO606	Y	134°	-	+4000	220	-	-	RNAV 1
CF	PO604	-	263°	R	-	-	-	-	RNAV 1
TF	COD	-	263°	-	+FL90	-	-	-	RNAV 1

**EXFIN 5C**

Path Terminator	WPT name	Fly Over	Track °Mag	Turn Direction	Altitude Constraint	Speed Limit (IAS)	Recommended Navaid	Bearing/ Range to Navaid	Navigation Performance
CF	PO606	-	134°	-	+4000	220	-	-	RNAV 1
TF	PO612	-	064°	-	+FL110	-	-	-	RNAV 1
TF	EXFIN	-	064°	-	-	-	VIL VORTAC	RDL019/D5	RNAV 1

**EZRAF 5A**

Path Terminator	WPT name	Fly Over	Track °Mag	Turn Direction	Altitude Constraint	Speed Limit (IAS)	Recommended Navaid	Bearing/ Range to Navaid	Navigation Performance
CF	PO606	-	134°	-	+4000	220	-	-	RNAV 1
TF	EZRAF	-	101°	-	+FL95	-	-	-	RNAV 1

**FAMXO 5A (ATC discretion)**

Path Terminator	WPT name	Fly Over	Track °Mag	Turn Direction	Altitude Constraint	Speed Limit (IAS)	Recommended Navaid	Bearing/ Range to Navaid	Navigation Performance
CF	PO606	-	134°	-	+4000	220	-	-	RNAV 1
TF	FAMXO	-	142°	-	+FL130	-	-	-	RNAV 1

**OSBUL 5H**

Path Terminator	WPT name	Fly Over	Track °Mag	Turn Direction	Altitude Constraint	Speed Limit (IAS)	Recommended Navaid	Bearing/ Range to Navaid	Navigation Performance
CF	PO606	-	134°	-	+4000	220	-	-	RNAV 1
TF	OSBUL	-	193°	-	+FL90	-	-	-	RNAV 1

**OSKOR 5H**

Path Terminator	WPT name	Fly Over	Track °Mag	Turn Direction	Altitude Constraint	Speed Limit (IAS)	Recommended Navaid	Bearing/ Range to Navaid	Navigation Performance
CF	PO606	Y	134°	-	+4000	220	-	-	RNAV 1
CF	PO604	-	263°	R	-	220	-	-	RNAV 1
TF	OSKOR	-	009°	R	+FL110	-	-	-	RNAV 1

**TAGHE 5A (ATC discretion)**

Path Terminator	WPT name	Fly Over	Track °Mag	Turn Direction	Altitude Constraint	Speed Limit (IAS)	Recommended Navaid	Bearing/ Range to Navaid	Navigation Performance
CF	PO606	-	134°	-	+4000	220	-	-	RNAV 1
TF	TAGHE	-	121°	-	+FL95	-	-	-	RNAV 1

**Waypoints Table formatted according ARINC 424 standards**

<b>Waypoint</b>	<b>Latitude</b>	<b>Longitude</b>
PO604	N45155688	E010005760
PO606	N45195731	E010280344
PO612	N45252423	E010450534