

CHANGE: TWR FREQ and chart updated

AIRSPACE CLASSIFICATION See AIP ENR 1.4
TRANSITION ALT 6000 FT
ELEV AND ALT IN FT IF NOT OTHERWISE INDICATED

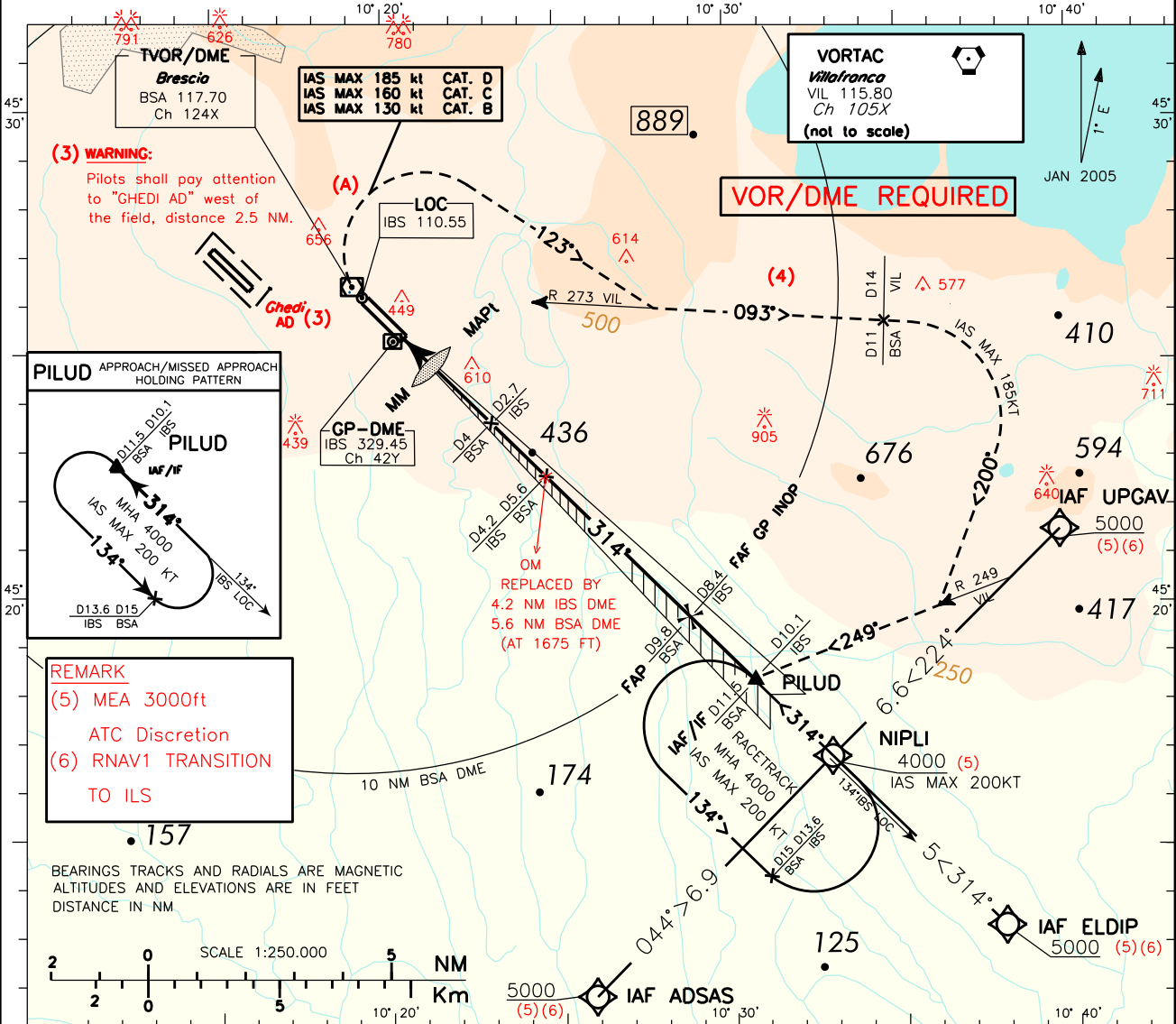
REMARK
Traffic circuit allowed only EAST of the RWY MAX 1000ft AGL: a) RWY 32 right b) RWY 14 left

WARNING
Pilots shall pay attention not to confuse Brescia Montichiari AD with Ghedi military AD with similar RWY configuration (13/31), located at just 2.5NM west of Brescia Montichiari AD

ICAO - INSTRUMENT APPROACH CHART

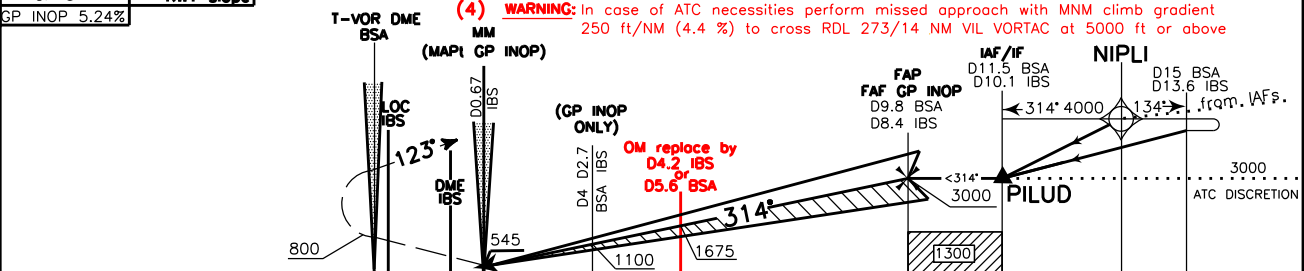
AD 2 LIPO 5-3

(A) REMARK: Missed Approach procedure is partially carried out outside controlled airspace.	APP	Milano Radar	135.900 (124.250)	AD ELEV	356	LIPO BRESCIA/MONTICHIARI ILS RWY 32
	TWR	Montichiari TWR	CH 119.405 122.100			



TRANSITION ALT 6000
RDH 17 M (2) Significant obstacles RWY slope
GP 3'
GP INOP 5.24%

MISSED APPROACH: Proceed on TR 314° climbing to 4000 ft. At 800 ft turn right on TR 123° to join RDL 273 VIL VOR. At 11 NM BSA DME (14 NM VIL TACAN) turn right on TR 200° (IAS MAX 185KT) to join and follow RDL 249 VIL VOR bound to PILUD holding pattern.



IBS DME	THR ELEV 333	IBS DME
BSA DME		BSA DME

STRAIGHT IN APPROACH	MISSED APPROACH GRADIENT 2.5%				CIRCLING SECTOR (1) Allowed North-East of RWY only.	GS	FT PER MIN	IBS DME	ALTITUDE (HEIGHT)	MNM SCT ALT BSA VOR/DME or 25 NM FROM ARP (7) 9800 in case of BSA VOR/DME unavailability
	ILS CAT. I (2)	ILS CAT. II (2)	LOC							
	545(212)	557(224)	613(280)	not applicable		180	956	D5	1923 (1590)	
	433(100)	443(110)	533(200)	not applicable		150	797	D4	1605 (1272)	
	750(417)					130	690	D3	1287 (954)	
	MISSED APPROACH GRADIENT 5.0%					110	584	D2	968 (635)	
	545(212)	557(224)	565(232)	575(242)		90	478	D1	649 (316)	
	433(100)					70	372			
	356(23)									

RNAV TRANSITION TO ILS APPROACH via UPGAV

Serial Number	Path Terminator	Waypoint Identifier	Fly Over	Course °M(°T)	Magnetic Variation	Distance (NM)	Turn Direction	Altitude (ft)	Speed Limit (kt)	VPA/TCH	Navigation Specification
010	IF	UPGAV	-	-	-	-	-	+5000 (1)	-210	-	RNAV1
020	TF	NIPLI	-	224°(226.1°)	-	6.6	-	+4000 (1)	-200	-	RNAV1
030	TF	PILUD	-	314°(315.1°)	-	2.3	R	+3000	-	-	RNAV1

RNAV TRANSITION TO ILS APPROACH via ELDIP

Serial Number	Path Terminator	Waypoint Identifier	Fly Over	Course °M(°T)	Magnetic Variation	Distance (NM)	Turn Direction	Altitude (ft)	Speed Limit (kt)	VPA/TCH	Navigation Specification
010	IF	ELDIP	-	-	-	-	-	+5000 (1)	-210	-	RNAV1
020	TF	NIPLI	-	314°(315.1°)	-	5.0	-	+4000 (1)	-200	-	RNAV1
030	TF	PILUD	-	314°(315.1°)	-	2.3	-	+3000	-	-	RNAV1

RNAV TRANSITION TO ILS APPROACH via ADSAS

Serial Number	Path Terminator	Waypoint Identifier	Fly Over	Course °M(°T)	Magnetic Variation	Distance (NM)	Turn Direction	Altitude (ft)	Speed Limit (kt)	VPA/TCH	Navigation Specification
010	IF	ADSAS	-	-	-	-	-	+5000 (1)	-210	-	RNAV1
020	TF	NIPLI	-	044°(045.2°)	-	6.9	-	+4000 (1)	-200	-	RNAV1
030	TF	PILUD	-	314°(315.1°)	-	2.3	L	+3000	-	-	RNAV1

REMARKS

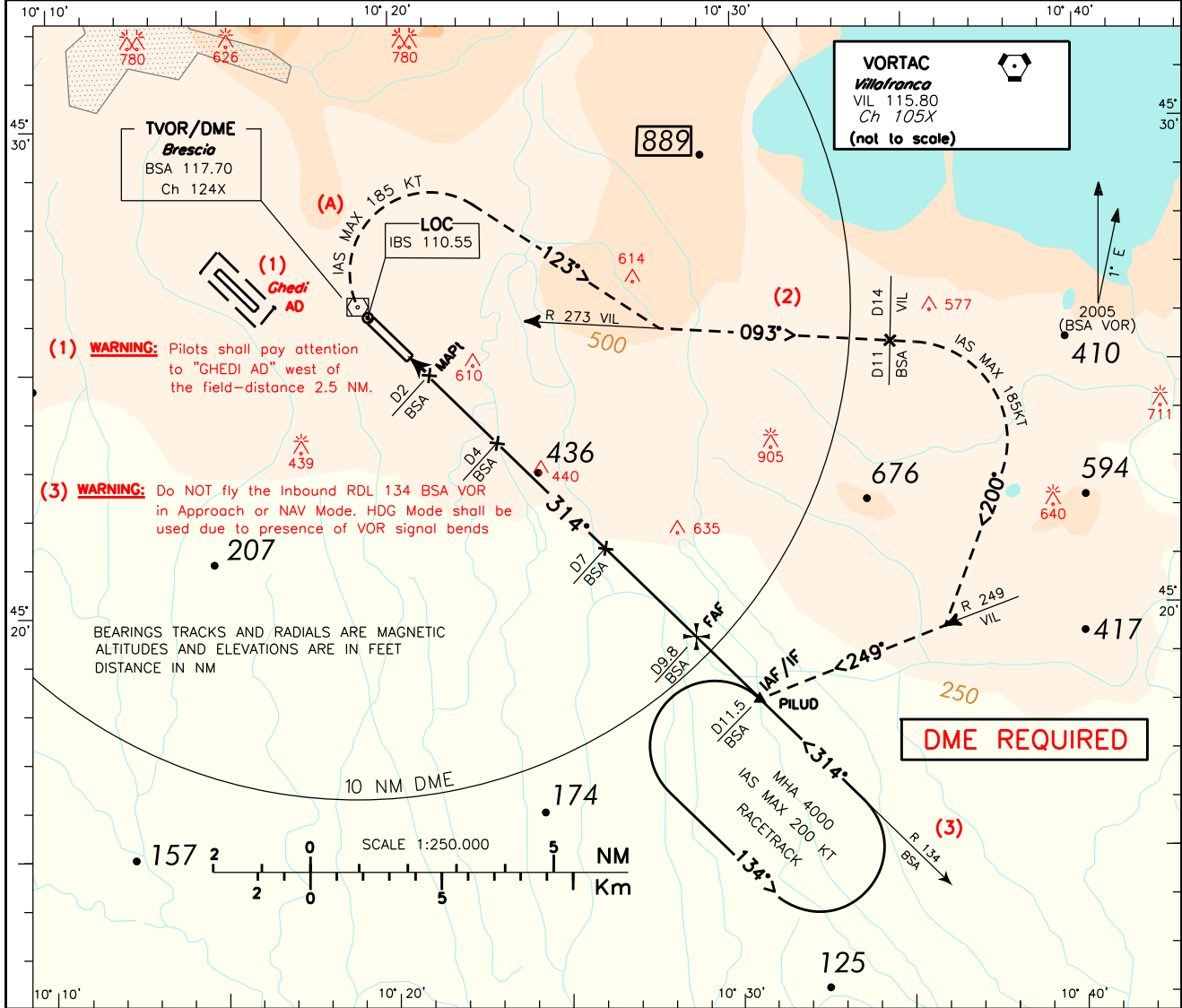
(1) MEA 3000FT ATC Discretion

ICAO - INSTRUMENT APPROACH CHART

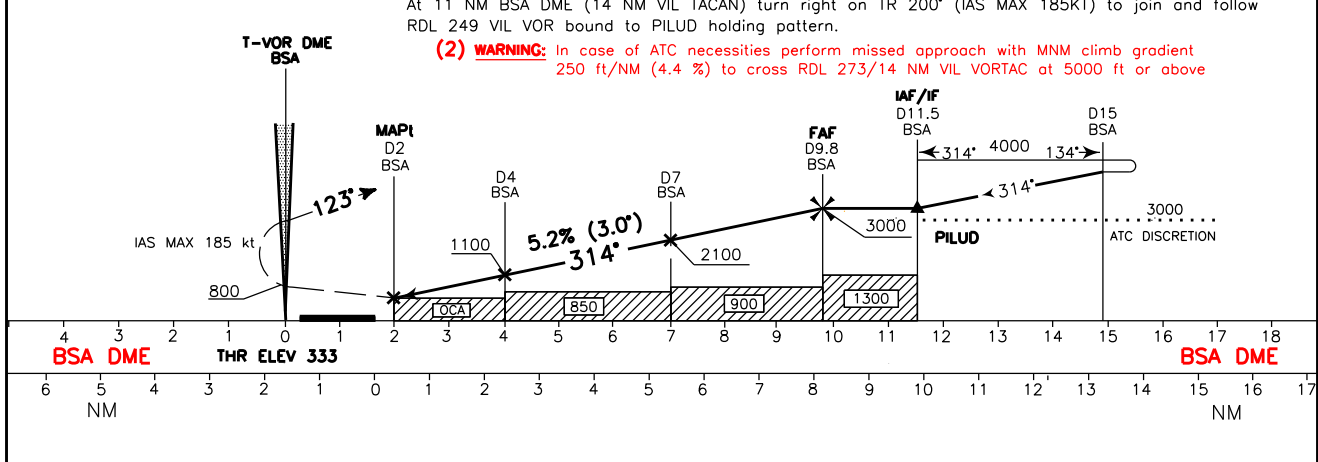
AD 2 LIPO 5-5

DOC. 8168 ED.6 - 2014 - AMDT 7
CHANGE: TWR FREQ UPDATED

(A) REMARK: Missed Approach procedure is partially carried out outside controlled airspace.	APP Milano Radar	135.900 (124.250)	AD ELEV	LIPO BRESCIA/MONTICHIARI (ATC DISCRETION) VOR RWY 32
	TWR Montichiari TWR	CH 119.405 122.100	356	



TRANSITION ALT 6000 MISSED APPROACH: Proceed on TR 314° climbing to 4000 ft. At 800 ft turn right on TR 123° to join RDL 273 VIL VOR. At 11 NM BSA DME (14 NM VIL TACAN) turn right on TR 200° (IAS MAX 185KT) to join and follow RDL 249 VIL VOR bound to PILUD holding pattern.



OCA (OCH)	A	B	C	D	CIRCLING SECTOR (3) Allowed North-East of RWY only	FT PER MIN	GS	MNM SCT ALT BSA VOR/DME 9800 2400	
STRAIGHT IN APPROACH VOR	750 (417)					728 160	637 140		546 120
CIRCLING (3)	890 (534)	950 (594)	1130 (774)	2030(1674)					