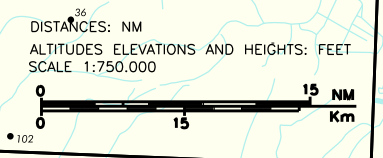


STAR	BRESCIA/MONTICHIARI	
	TRANSITION ALT 6000	
FREQUENCIES		
APP	Milano Radar	135.900 (124.250)
TWR	Montichiari TWR	CH 119.405 122.100

MNM SECT ALT BSA VOR	AIRSPACE CLASSIFICATION SEE AIP ENR 1.4
9800 095 ← 275 2400	LEGEND
	STAR →
	STAR ATC DISCRETION - - -



CHANGE: TWR FREQ UPDATED

Not to scale

(1) MEA 3000FT ATC DISCRETION

BEARINGS ARE MAGNETIC  
JAN 05  
(BSA VOR)

**STAR description****EPCUM 1A (ATC discretion)**

EPCUM proceed on TR 164° (RDL 344 VIL VOR) until 3NM VIL VORTAC, then turn right on TR 273° (RDL 273 VIL VOR or RDL 093 BSA VOR) until 9.5NM VIL VORTAC (15.5NM BSA DME), then turn left to join ARC 13 NM BSA DME until crossing RDL 122 BSA VOR, then turn right bound to PILUD.

MEL/MEA: EPCUM – RDL 344/3 NM VIL VORTAC: FL 110; RDL 344/3 NM VIL VORTAC – RDL 273/9.5 NM VIL VORTAC: 6000FT; RDL 273/9.5NM VIL VORTAC – PILUD: 4000 FT (3000 FT ATC discretion)

**NEVNI 3E**

NEVNI, then turn left to joining ARC 13 NM BSA DME until crossing RDL 122 BSA VOR, then turn right bound to PILUD.

MEL/MEA: NEVNI – INT ARC 13 NM BSA DME/RDL 070 BSA VOR: FL 85; INT ARC 13 NM BSA DME/RDL 070 BSA VOR – INT ARC 13 NM BSA DME/RDL 095 BSA VOR: 6000FT; INT ARC 13 NM BSA DME/RDL 095 BSA VOR – PILUD: 4000 FT (3000 FT ATC discretion)

**OSBUL 1D**

OSBUL – TR 001° (RDL 181 BSA VOR) until 15 NM BSA DME, then turn right to joining ARC 13 NM BSA DME until crossing RDL 143 BSA VOR, then turn left bound to PILUD.

MEA: OSBUL – RDL 181/25 NM BSA VOR/DME : 6000FT; RDL 181/25 NM BSA VOR/DME – PILUD: 4000 FT (3000 FT /ATC discretion)

**OSTEG 1F**

OSTEG – TR 293° (RDL 113 BSA VOR) until 15.5 NM BSA DME, then turn left to joining ARC 13 NM BSA DME until crossing RDL 122 BSA VOR, then turn right bound to PILUD.

MEA: OSTEG – PILUD: 4000FT (3000 FT ATC discretion)

**RICIZ 1A (ATC discretion)**

RICIZ then proceed on TR 314° (RDL 134° BSA VOR) to PILUD.

RICIZ – INT RDL 134 BSA VOR/33 NM BOA DME: FL 90; INT RDL 134 BSA VOR/33 NM BOA DME – PILUD: 4000FT (3000 FT ATC discretion)

**SRN 3E**

SRN VOR/DME – RDL 103 SRN VOR – TZO VOR/DME/NDB – TR 110° (RDL/QDR 110 TZO VOR/NDB) until point INT RDL/QDR 110 TZO VOR/NDB - RDL 269 BSA VOR, then turn right to joining ARC 13 NM BSA until crossing RDL 143 BSA VOR, then turn left bound to PILUD.

MEL/MEA: SRN VOR/DME – INT RDL/QDR 110 TZO VOR/NDB - RDL 269 BSA VOR: FL 110; INT RDL/QDR 110 TZO VOR/NDB - RDL 269 BSA VOR – INT ARC 13 NM BSA DME/RDL 190 BSA VOR: 6000FT; INT ARC 13 NM BSA DME/RDL 190 BSA VOR – PILUD: 4000FT (3000 FT ATC discretion)

**TZO 3E**

TZO VOR/DME/NDB – TR 110° (RDL/QDR 110 TZO VOR/NDB) until point INT RDL/QDR 110 TZO VOR/NDB - RDL 269 BSA VOR, then turn right to joining ARC 13 NM BSA until crossing RDL 143 BSA VOR, then turn left bound to PILUD.

MEL/MEA: TZO VOR/DME/NDB - INT RDL/QDR 110 TZO VOR/NDB - RDL 269 BSA VOR: FL 110; INT RDL/QDR 110 TZO VOR/NDB - RDL 269 BSA VOR – INT ARC 13 NM BSA DME/RDL 190 BSA VOR: 6000FT; INT ARC 13 NM BSA DME/RDL 190 BSA VOR – PILUD: 4000FT (3000 FT ATC discretion)

Intenzionalmente bianca

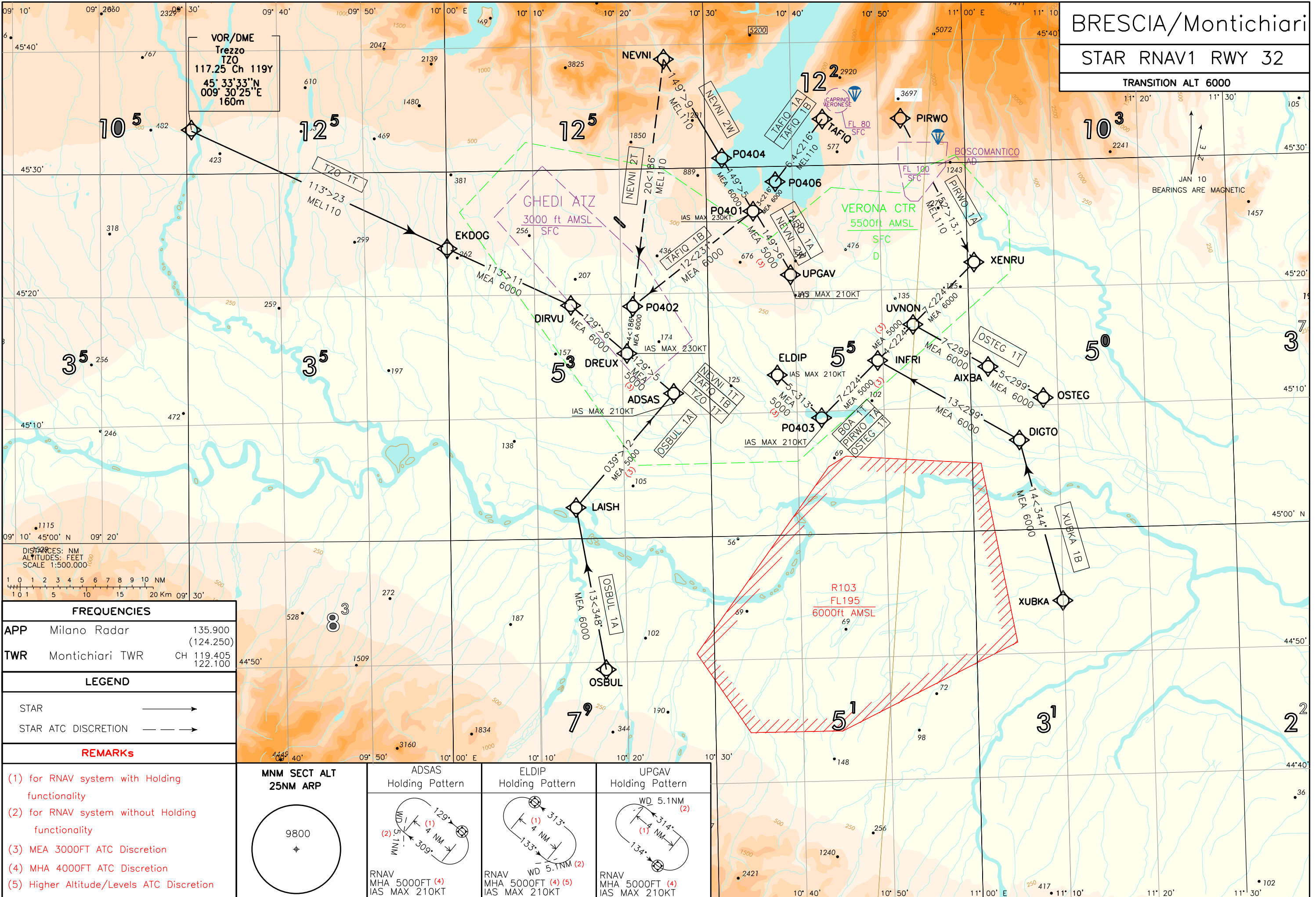
*Intentionally left blank*

# BRESCIA/Montichiari STAR RNAV1 RWY 32

TRANSITION ALT 6000

JAN 10  
BEARINGS ARE MAGNETIC

CHANGE: TWR FREQ UPDATED



FREQUENCIES	
APP	Milano Radar 135.900 (124.250)
TWR	Montichiari TWR CH 119.405 122.100

LEGEND	
STAR	—————>
STAR ATC DISCRETION	- - - - ->

### REMARKS

- (1) for RNAV system with Holding functionality
- (2) for RNAV system without Holding functionality
- (3) MEA 3000FT ATC Discretion
- (4) MHA 4000FT ATC Discretion
- (5) Higher Altitude/Levels ATC Discretion

MNM SECT ALT 25NM ARP	ADSAS Holding Pattern	ELDIP Holding Pattern	UPGAV Holding Pattern
9800 +			
	RNAV MHA 5000FT (4) IAS MAX 210KT	RNAV MHA 5000FT (4) (5) IAS MAX 210KT	RNAV MHA 5000FT (4) IAS MAX 210KT

## BRESCIA/MONTICHIARI STAR RNAV 1 RWY32

## NEVNI 2T (ATC Discretion)

Path Terminator	Waypoint Identifier	Fly Over	Course °M(°T)	Magnetic Variation	Distance (NM)	Turn Direction	Altitude (ft)	Speed Limit (kt)	Navigation Specification
IF	NEVNI	-	-	-	-	-	-	-	RNAV1
TF	P0402	-	186°(188.1°)	-	20.3	-	+FL110	-	RNAV1
TF	DREUX	-	186°(188.1°)	-	3.9	-	+6000	-230	RNAV1
TF	ADSAS	-	129°(131.4°)	-	5.0	-	+5000 (3)	-210	RNAV1

## NEVNI 2W

Path Terminator	Waypoint Identifier	Fly Over	Course °M(°T)	Magnetic Variation	Distance (NM)	Turn Direction	Altitude (ft)	Speed Limit (kt)	Navigation Specification
IF	NEVNI	-	-	-	-	-	-	-	RNAV1
TF	P0404	-	149°(150.6°)	-	9.4	-	+FL110	-	RNAV1
TF	P0401	-	149°(150.6°)	-	5.0	-	+6000	-230	RNAV1
TF	UPGAV	-	149°(150.6°)	-	6.0	-	+5000 (3)	-210	RNAV1

## OSBUL 1A

Path Terminator	Waypoint Identifier	Fly Over	Course °M(°T)	Magnetic Variation	Distance (NM)	Turn Direction	Altitude (ft)	Speed Limit (kt)	Navigation Specification
IF	OSBUL	-	-	-	-	-	-	-	RNAV1
TF	LAISH	-	348°(350.4°)	-	13.4	-	+6000	-	RNAV1
TF	ADSAS	-	039°(041.4°)	-	12.2	-	+5000 (3)	-210	RNAV1

## OSTEG 1T

Path Terminator	Waypoint Identifier	Fly Over	Course °M(°T)	Magnetic Variation	Distance (NM)	Turn Direction	Altitude (ft)	Speed Limit (kt)	Navigation Specification
IF	OSTEG	-	-	-	-	-	-	-	RNAV1
TF	AIXBA	-	299°(300.8°)	-	5.2	-	+6000	-	RNAV1
TF	UVNON	-	299°(300.8°)	-	7.0	-	+6000	-	RNAV1
TF	INFRI	-	224°(225.7°)	-	4.1	-	+5000 (3)	-	RNAV1
TF	PO403	-	224°(225.7°)	-	6.5	-	+5000 (3)	-210	RNAV1
TF	ELDIP	-	313°(315.2°)	-	5.0	-	+5000 (3)	-210	RNAV1

**PIRWO 1A (ATC Discretion)**

Path Terminator	Waypoint Identifier	Fly Over	Course °M(°T)	Magnetic Variation	Distance (NM)	Turn Direction	Altitude (ft)	Speed Limit (kt)	Navigation Specification
IF	PIRWO	-	-	-	-	-	-	-	RNAV1
TF	XENRU	-	152°(154.2°)	-	13.1	-	+FL110	-	RNAV1
TF	UVNON	-	224°(225.7°)	-	7.1	-	+6000	-	RNAV1
TF	INFRI	-	224°(225.7°)	-	4.1	-	+5000 (3)	-	RNAV1
TF	PO403	-	224°(225.7°)	-	6.5	-	+5000 (3)	-210	RNAV1
TF	ELDIP	-	313°(315.2°)	-	5.0	-	+5000 (3)	-210	RNAV1

**TAFIQ 1A**

Path Terminator	Waypoint Identifier	Fly Over	Course °M(°T)	Magnetic Variation	Distance (NM)	Turn Direction	Altitude (ft)	Speed Limit (kt)	Navigation Specification
IF	TAFIQ	-	-	-	-	-	-	-	RNAV1
TF	P0406	-	216°(218.2°)	-	6.4	-	+FL110	-	RNAV1
TF	P0401	-	216°(218.2°)	-	3.0	-	+6000	-230	RNAV1
TF	UPGAV	-	149°(150.6°)	-	6.0	-	+5000 (3)	-210	RNAV1

**TAFIQ 1B (ATC Discretion)**

Path Terminator	Waypoint Identifier	Fly Over	Course °M(°T)	Magnetic Variation	Distance (NM)	Turn Direction	Altitude (ft)	Speed Limit (kt)	Navigation Specification
IF	TAFIQ	-	-	-	-	-	-	-	RNAV1
TF	P0406	-	216°(218.2°)	-	6.4	-	+FL110	-	RNAV1
TF	P0401	-	216°(218.2°)	-	3.0	-	+6000	-	RNAV1
TF	P0402	-	231°(232.8°)	-	12.5	-	+6000	-	RNAV1
TF	DREUX	-	186°(188.0°)	-	3.9	-	+6000	-230	RNAV1
TF	ADSAS	-	129°(131.4°)	-	5.0	-	+5000 (3)	-210	RNAV1

**TZO 1T**

Path Terminator	Waypoint Identifier	Fly Over	Course °M(°T)	Magnetic Variation	Distance (NM)	Turn Direction	Altitude (ft)	Speed Limit (kt)	Navigation Specification
IF	TZO	-	-	-	-	-	-	-	RNAV1
TF	EKDOG	-	113°(115.1°)	-	23.0	-	+FL110	-	RNAV1
TF	DIRVU	-	113°(115.1°)	-	11.1	-	+6000	-	RNAV1
TF	DREUX	-	129°(131.4°)	-	6.0	-	+6000	-230	RNAV1
TF	ADSAS	-	129°(131.4°)	-	5.0	-	+5000 (3)	-210	RNAV1

**XUBKA 1B**

Path Terminator	Waypoint Identifier	Fly Over	Course °M(°T)	Magnetic Variation	Distance (NM)	Turn Direction	Altitude (ft)	Speed Limit (kt)	Navigation Specification
IF	XUBKA	-	-	-	-	-	-	-	RNAV1
TF	DIGTO	-	344°(346.4°)	-	13.5	-	+6000	-	RNAV1
TF	INFRI	-	299°(300.8°)	-	13.2	-	+6000	-	RNAV1
TF	PO403	-	224°(225.7°)	-	6.5	-	+5000 (3)	-210	RNAV1
TF	ELDIP	-	313° (315.2)	-	5.0	-	+5000 (3)	-210	RNAV1

**HOLDING RNAV 1**

Path Terminator	Waypoint Identifier	Inbound Course °M (°T)	Leg Distance (NM) (1)	Timing(min.)/ Waypoint Distance (NM) (2)	Turn Direction	Minimum Altitude (FT)	Maximum Altitude (FT)	Speed Limit (kt)	Magnetic Variation (°)	Navigation Specification
HM	ELDIP	313°(315.2°)	4.0	- / 5.1	L	5000 (4)	5000 (5)	-210	+2°	RNAV1
HM	UPGAV	134°(136.0°)	4.0	- / 5.1	L	5000 (4)	-	-210	+2°	RNAV1
HM	ADSAS	129°(131.4°)	4.0	- / 5.1	R	5000 (4)	-	-210	+2°	RNAV1

**REMARKS**

- (1) for RNAV system with holding functionality
- (2) for RNAV system without holding functionality
- (3) MEA 3000FT a discrezione ATC/ATC Discretion
- (4) MHA 4000FT a discrezione ATC/ATC Discretion
- (5) Altitudini o Livelli superiori a discrezione ATC / Higher Altitudes or Levels ATC Discretion

**WAYPOINT LIST**

<b>Waypoint Identifier</b>	<b>Coordinates</b>
PO401	45° 26' 24.40" N 010° 35' 23.18" E
PO402	45° 18' 50.55" N 010° 21' 18.85" E
PO403	45° 09' 29.70" N 010° 42' 48.51" E
PO404	45° 30' 45.78" N 010° 31' 53.85" E
PO406	45° 28' 46.25" N 010° 38' 00.66" E