

CHANGE: MSA MODIFIED - WARNING CLOSE-IN OBST ADDED

ICP & SID RWY 12 DESCRIPTION**WARNING**

“Close-in” obstacles penetrating OIS 2.5% exist, but they were not considered for the published procedure design gradient.

INITIAL CLIMB PROCEDURE RWY 12

After take-off intercept and follow RDL 114 FOL VOR until 10NM FOL DME, then join the assigned SID.
Minimum climb gradient: 365 ft/NM (6.0%) until passing 6000ft.

(Minimum climb gradient: 365 ft/NM (6%) until passing FL 100 for SID GIPUK 6Q and LUMAV 7Q only)

AMLON 6Q

Turn left on TR 024° to join and follow RDL 072 FOL VOR (TR 072°), bound to AMLON.

MCA/MCL: INT RDL 072/22NM FOL VOR/DME: 5500FT; AMLON: FL 80

ASDOR 6Q

Turn right to join and follow ARC 12NM FOL DME. Crossing RDL 137 FOL VOR turn left to join RDL 146 FOL VOR (TR 146°), bound to ASDOR.

MCL: ASDOR: FL110

BOA 6Q

Turn right bound to FOL VOR/DME, to leave on RDL 299 FOL VOR (TR 299°) and proceed bound to BOA VOR/DME.

MCL: INT RDL 299/20NM FOL VOR/DME: FL 100

GIPUK 6Q

Turn right bound to FOL VOR/DME, to leave on RDL 346 FOL VOR (TR 346°) and proceed bound to GIPUK.

MCL: FOL VOR/DME: FL 100

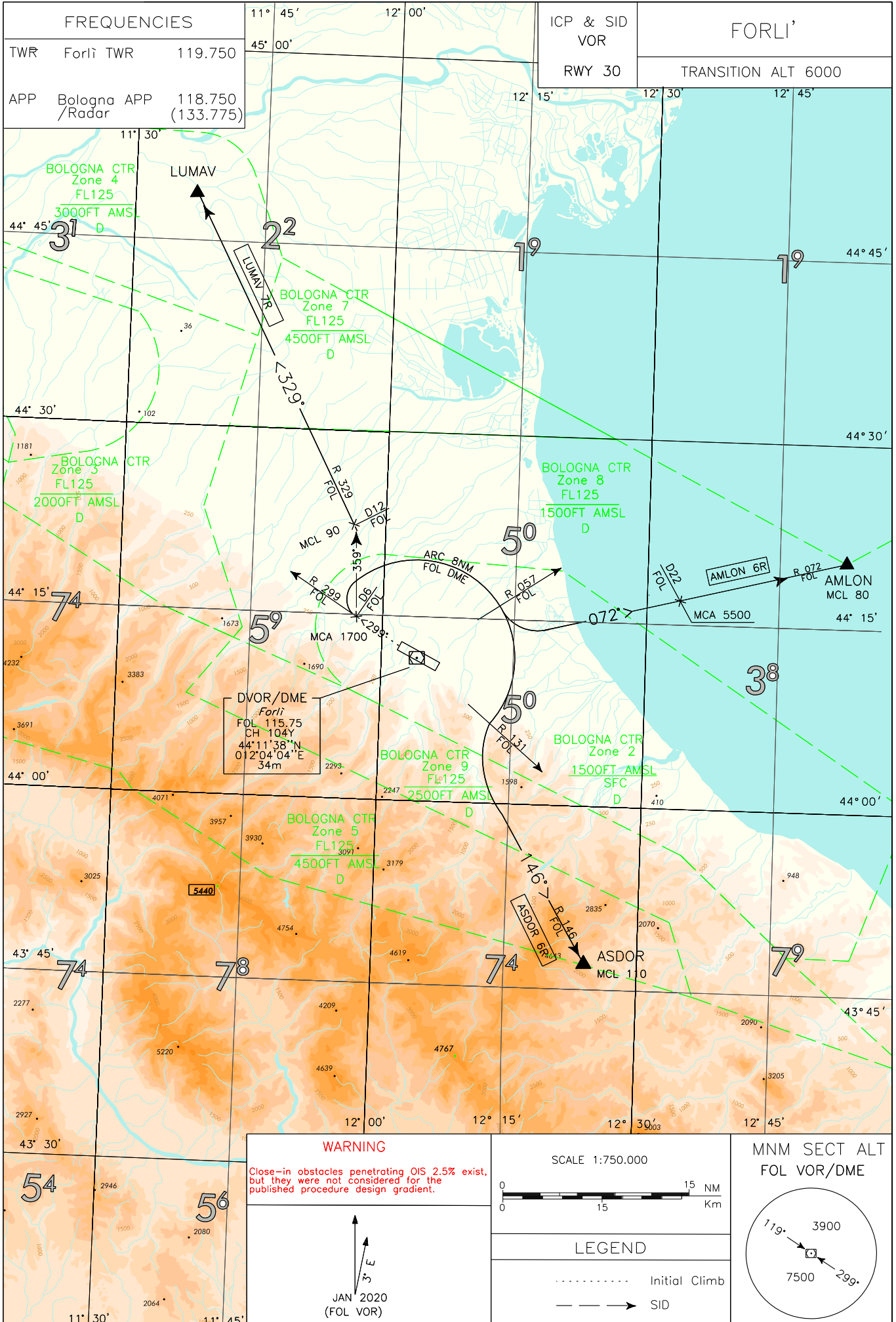
LUMAV 7Q

Turn right bound to FOL VOR/DME, to leave on RDL 329 FOL VOR (TR 329°) and proceed bound to LUMAV.

MCL: FOL VOR/DME: FL 100; INT RDL 329/12NM FOL VOR/DME: FL 130

Intenzionalmente bianca

Intentionally left blank



CHANGE: MSA MODIFIED - WARNING CLOSE-IN OBST ADDED

ICP & SID RWY 30 DESCRIPTION**WARNING**

“Close-in” obstacles penetrating OIS 2.5% exist, but they were not considered for the published procedure design gradient.

INITIAL CLIMB PROCEDURE RWY 30

After take-off intercept and follow RDL 299 FOL VOR until 6NM FOL DME, to be reached at 1700ft or above, then join the assigned SID.

Minimum climb gradient: 300 ft/NM (5%) until passing 3000ft.

AMLON 6R

Turn right to join and follow ARC 8NM FOL DME. Crossing RDL 057 FOL VOR turn left to join RDL 072 FOL VOR (TR 072°), bound to AMLON.

MCA/MCL: INT RDL 072/22NM FOL VOR/DME: 5500FT; AMLON: FL 80

ASDOR 6R

Turn right to join and follow ARC 8NM FOL DME. Crossing RDL 131 FOL VOR turn left to join RDL 146 FOL VOR (TR 146°), bound to ASDOR.

MCL: ASDOR: FL110

LUMAV 7R

Turn right on TR 359° to join and follow RDL 329 FOL VOR (TR 329°) bound to LUMAV.

MCL: INT RDL 329/12NM FOL VOR/DME: FL 90

Intenzionalmente bianca

Intentionally left blank