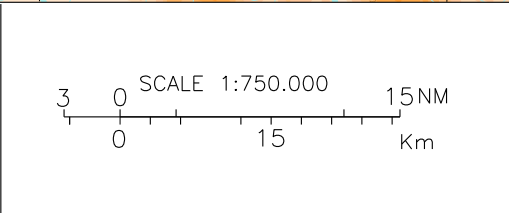
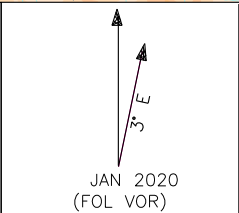
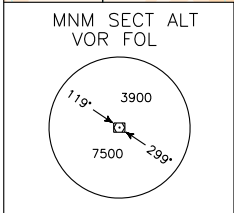
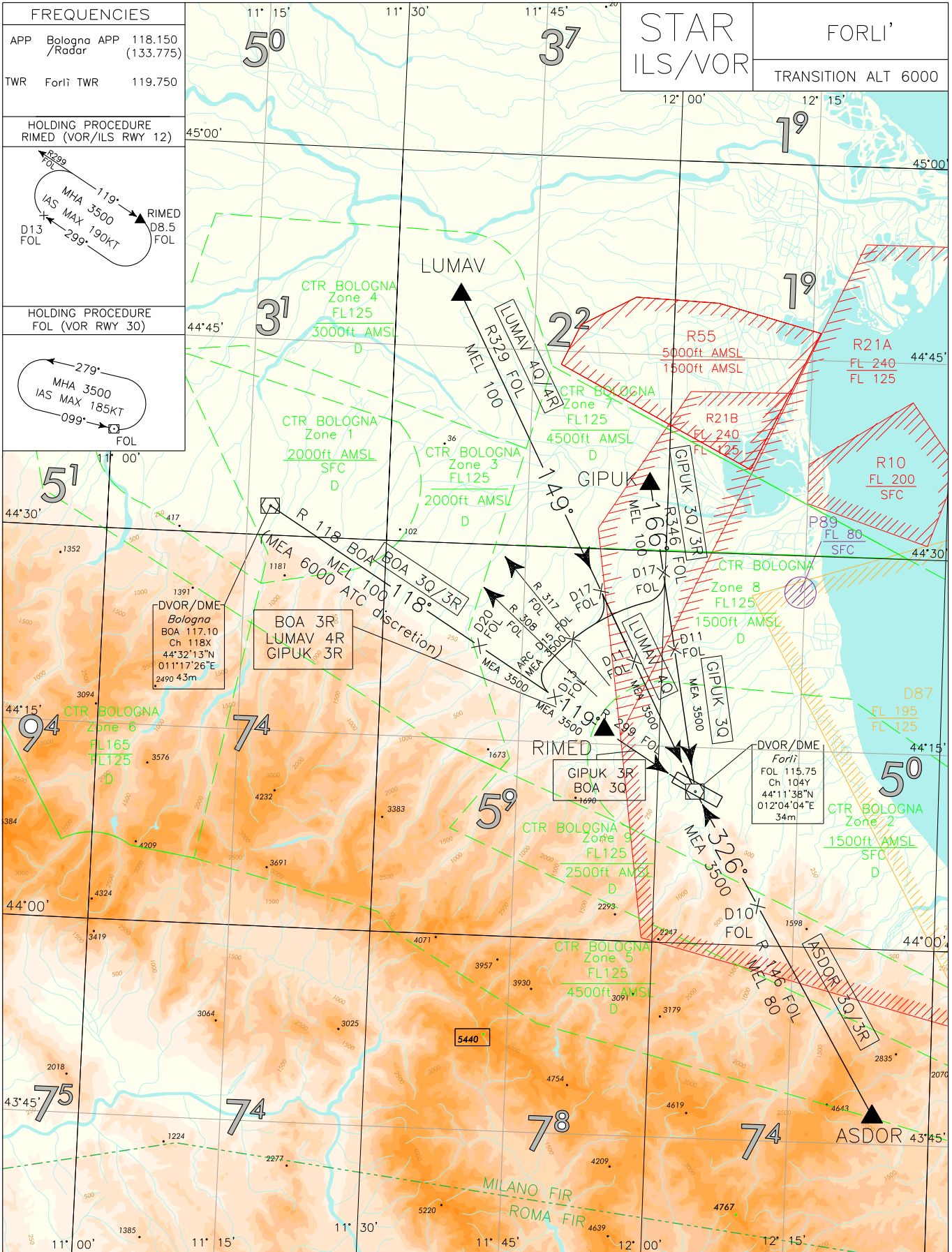


CHANGE: RIMED and FOL VOR HOLDING PATTERN MODIFIED - STAR MODIFIED - MSA MODIFIED



LEGEND

	STAR
	STAR ATC Discretion
	Not to Scale

ASDOR 3Q

ASDOR – TR 326° (RDL146 FOL VOR) – FOL VOR/DME.

MEL/MEA: ASDOR – RDL 146/10NM FOL VOR/DME: FL 80; RDL 146/10NM FOL VOR/DME – FOL VOR/DME: 3500 FT

ASDOR 3R

ASDOR – TR 326° (RDL146 FOL VOR) – FOL VOR/DME – TR 299° (RDL 299 FOL VOR) bound to RIMED or, if so cleared, to IAF.

MEL/MEA: ASDOR – RDL 146/10NM FOL VOR/DME: FL 80;
RDL 146/10NM FOL VOR/DME – RIMED (or IAF, as cleared): 3500 FT

BOA 3Q

BOA VOR/DME – TR 118° (RDL 118 BOA VOR) until 13NM FOL DME, then proceed on TR 119° (RDL 299 FOL VOR) bound to FOL VOR/DME.

MEL/MEA: BOA VOR/DME – RDL 118 BOA VOR/20NM FOL DME: FL 100 (6000 FT ATC discretion);
RDL 118 BOA VOR/20NM FOL DME – FOL VOR/DME: 3500 FT

BOA 3R

BOA VOR/DME – TR 118° (RDL 118 BOA VOR) until IAF (RDL 299/13NM FOL VOR/DME), or, if so cleared, proceed on TR 119° (RDL 299 FOL VOR) bound to RIMED.

MEL/MEA: BOA VOR/DME – RDL 118 BOA VOR/20NM FOL DME: FL 100 (6000 FT ATC discretion);
RDL 118 BOA VOR/20NM FOL DME – RIMED (or IAF, as cleared): 3500 FT

GIPUK 3Q

GIPUK – TR 166° (RDL 346 FOL VOR) – FOL VOR/DME.

MEL/MEA: GIPUK – RDL 346/11NM FOL VOR/DME: FL100; RDL 346/11NM FOL VOR/DME – FOL VOR/DME: 3500 FT

GIPUK 3R

GIPUK – TR 166° (RDL 346 FOL VOR). At 17NM FOL DME turn right to intercept and follow ARC 15NM FOL DME. Crossing RDL 308 FOL VOR turn left to intercept and follow RDL 299 FOL VOR (TR 119°) bound to IAF (RDL 299/13NM FOL VOR/DME), or, if so cleared, proceed on TR 119° (RDL 299 FOL VOR) bound to RIMED.

MEL/MEA: GIPUK – INT ARC 15NM FOL DME/RDL 317 FOL VOR: FL100;
INT ARC 15NM FOL DME/RDL 317 FOL VOR – RIMED (or IAF, as cleared): 3500 FT

LUMAV 4Q

LUMAV – TR 149° (RDL 329 FOL VOR) – FOL VOR/DME.

MEL/MEA: LUMAV – RDL 329/11NM FOL VOR/DME: FL 100; RDL 329/11NM FOL VOR/DME – FOL VOR/DME: 3500 FT

LUMAV 4R

LUMAV – TR 149° (RDL 329 FOL VOR). At 17NM FOL DME turn right to intercept and follow ARC 15NM FOL DME. Crossing RDL 308 FOL VOR turn left to intercept and follow RDL 299 FOL VOR (TR 119°) bound to IAF (RDL 299/13NM FOL VOR/DME), or, if so cleared, proceed on TR 119° (RDL 299 FOL VOR) bound to RIMED.

MEL/MEA: LUMAV – INT ARC 15NM FOL DME/RDL 317 FOL VOR: FL 100;
INT ARC 15NM FOL DME/RDL 317 FOL VOR – RIMED (or IAF, as cleared): 3500 FT

Intenzionalmente bianca

Intentionally left blank