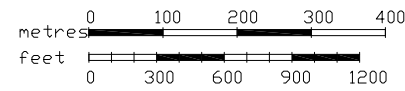


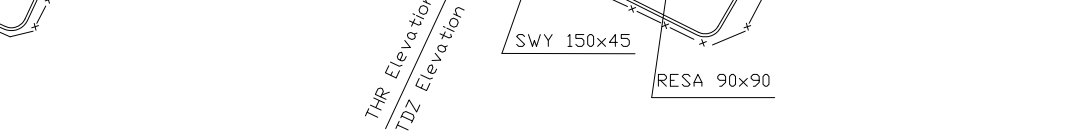
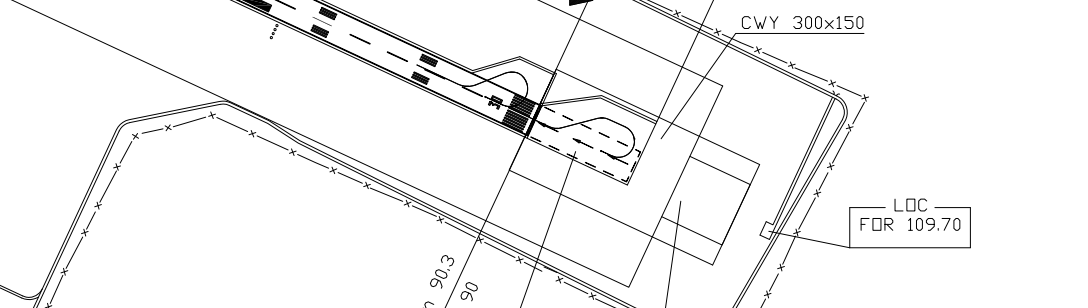
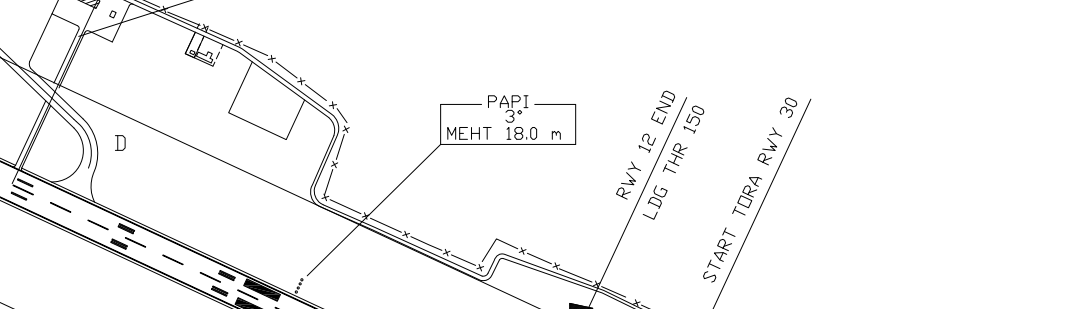
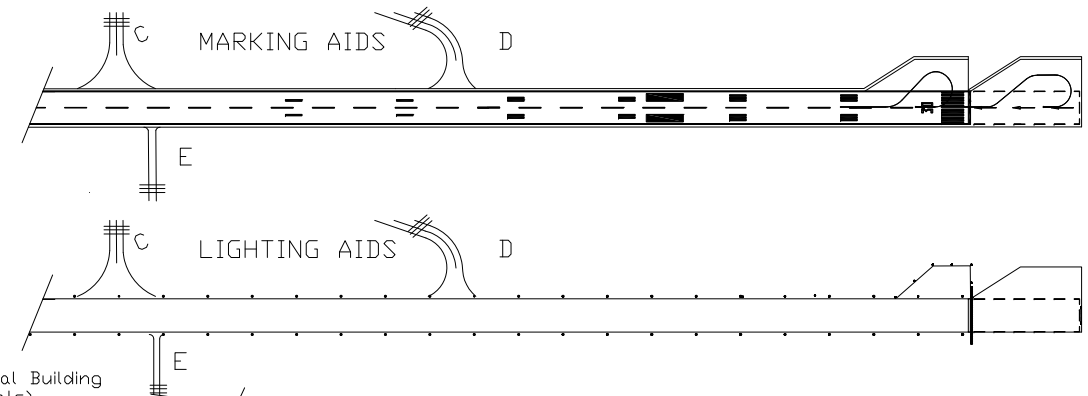
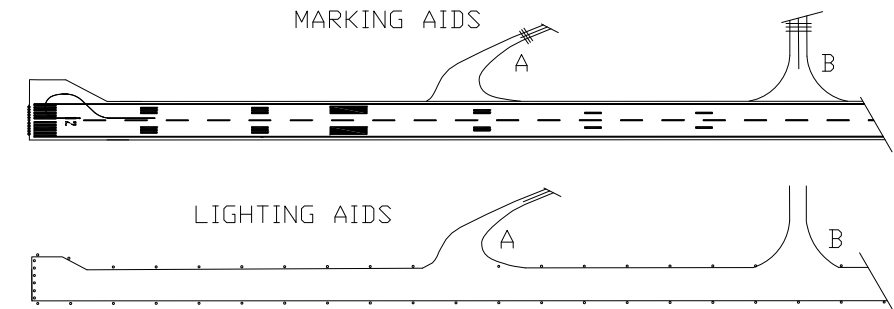
| RWY | QFU  | THR                               | bearing strength | Bearings are magnetic | TWR<br>119.750 |
|-----|------|-----------------------------------|------------------|-----------------------|----------------|
| 12  | 115° | N 44°12'00.53"<br>E 012°03'22.48" | PCN 50/F/B/W/T   | Distances in metres   |                |
| 30  | 295° | N 44°11'25.17"<br>E 012°04'59.30" | PCN 50/F/B/W/T   | Elevation in ft AMSL  |                |
|     |      |                                   |                  | Coordinates WGS84     |                |



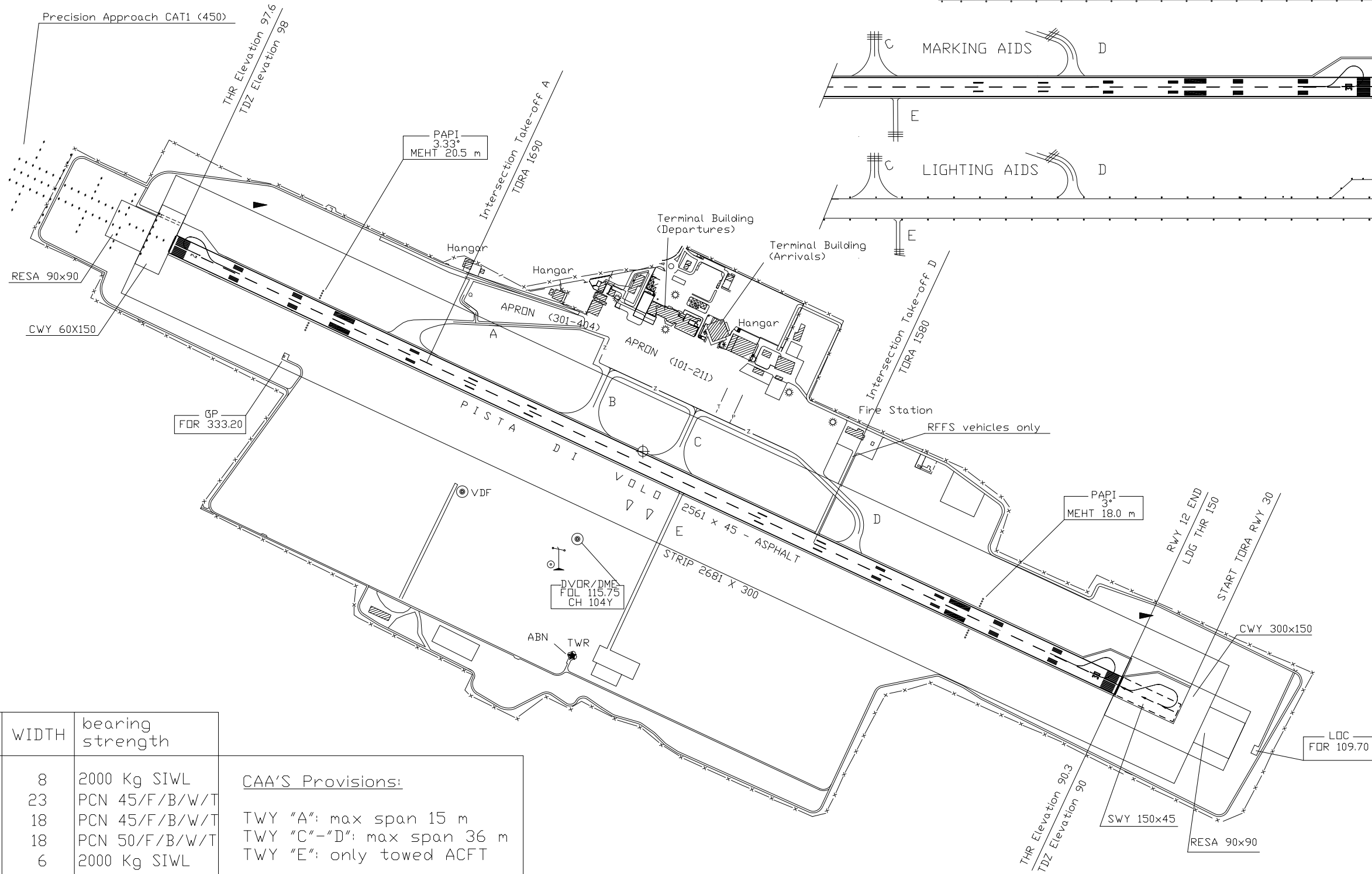
VAR 2° E - 2010.12

Annual rate of change 5'E

|                  |         |                          |
|------------------|---------|--------------------------|
| AD ELEV<br>98    | FORLI'  |                          |
| APRON ELEV<br>87 |         |                          |
|                  | L I P K | 44°11'44" N 012°04'11" E |

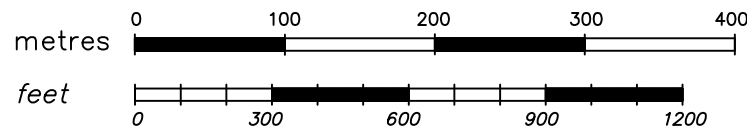


CHANGE: Reprinting due to transition from Other Aerodromes to Certified Aerodromes



| TWY IDENT | WIDTH | bearing strength | CAA'S Provisions:           |
|-----------|-------|------------------|-----------------------------|
| A         | 8     | 2000 Kg SIWL     | TWY "A": max span 15 m      |
| B         | 23    | PCN 45/F/B/W/T   | TWY "C"- "D": max span 36 m |
| C         | 18    | PCN 45/F/B/W/T   | TWY "E": only towed ACFT    |
| D         | 18    | PCN 50/F/B/W/T   |                             |
| E         | 6     | 2000 Kg SIWL     |                             |

|                       |                |
|-----------------------|----------------|
| Bearings are magnetic | TWR<br>119.750 |
| Distances in metres   |                |
| Elevation in ft AMSL  |                |
| Coordinates WGS84     |                |

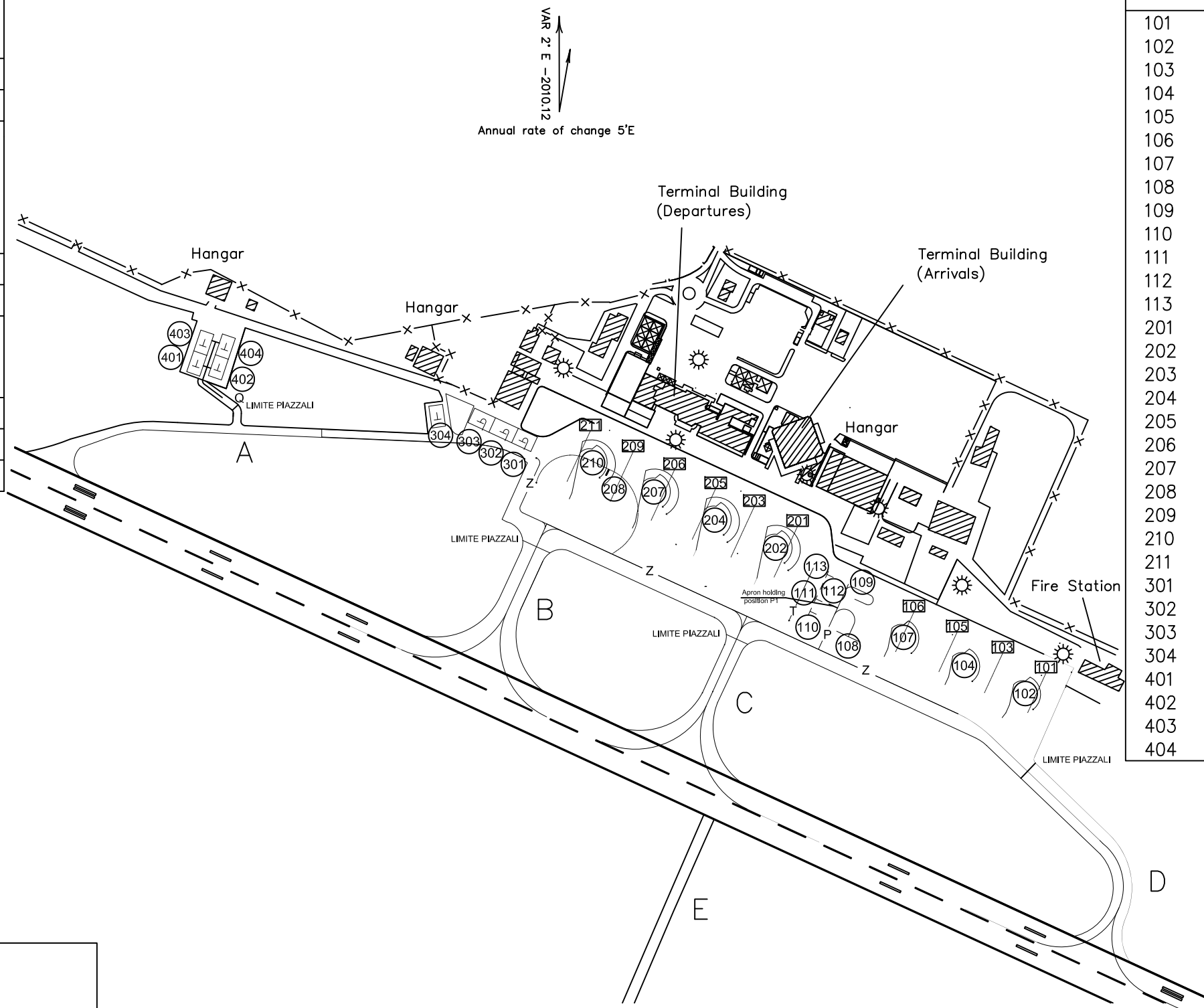


|                  |        |                          |
|------------------|--------|--------------------------|
| AD ELEV<br>98    | FORLI' |                          |
| APRON ELEV<br>87 |        |                          |
|                  | LIPK   | 44°11'44" N 012°04'11" E |

CHANGE: Reprinting due to transition from Other Aerodromes to Certified Aerodromes

|                        |                                                                                           |
|------------------------|-------------------------------------------------------------------------------------------|
| APRON (stands 101-113) |                                                                                           |
| LIGHTING               | BEARING STRENGTH                                                                          |
| edge: blue             | Surface:<br>mq 21900 - asphalt<br>PCN 79/F/B/W/T                                          |
| APRON (stands 201-211) |                                                                                           |
| LIGHTING               | BEARING STRENGTH                                                                          |
| edge: blue             | Surface:<br>mq 16800 - concrete<br>PCN 35/R/C/W/T<br>mq 22100 - asphalt<br>PCN 71/F/B/W/T |
| APRON (stands 301-303) |                                                                                           |
| LIGHTING               | BEARING STRENGTH                                                                          |
| NIL                    | Surface:<br>mq 2200 - asphalt<br>2000 kg SIWL                                             |
| APRON (stands 304-404) |                                                                                           |
| LIGHTING               | SURFACE                                                                                   |
| NIL                    | grass                                                                                     |

| POINTS ON PARKING AREA |              |               |
|------------------------|--------------|---------------|
| STANDS                 | N            | E             |
| 101                    | 44°11'44.76" | 012°04'29.98" |
| 102                    | 44°11'44.72" | 012°04'29.26" |
| 103                    | 44°11'45.46" | 012°04'28.07" |
| 104                    | 44°11'45.70" | 012°04'26.56" |
| 105                    | 44°11'46.19" | 012°04'26.06" |
| 106                    | 44°11'46.89" | 012°04'24.15" |
| 107                    | 44°11'46.68" | 012°04'23.88" |
| 108                    | 44°11'46.45" | 012°04'21.35" |
| 109                    | 44°11'47.38" | 012°04'21.94" |
| 110                    | 44°11'47.16" | 012°04'19.58" |
| 111                    | 44°11'47.56" | 012°04'19.86" |
| 112                    | 44°11'47.96" | 012°04'20.14" |
| 113                    | 44°11'48.40" | 012°04'20.45" |
| 201                    | 44°11'49.80" | 012°04'19.07" |
| 202                    | 44°11'49.75" | 012°04'18.33" |
| 203                    | 44°11'50.49" | 012°04'17.16" |
| 204                    | 44°11'50.73" | 012°04'15.64" |
| 205                    | 44°11'45.12" | 012°04'15.45" |
| 206                    | 44°11'51.78" | 012°04'13.64" |
| 207                    | 44°11'51.65" | 012°04'12.85" |
| 208                    | 44°11'52.02" | 012°04'10.77" |
| 209                    | 44°11'52.44" | 012°04'11.83" |
| 210                    | 44°11'52.73" | 012°04'10.17" |
| 211                    | 44°11'53.14" | 012°04'09.93" |
| 301                    | 44°11'53.04" | 012°04'07.06" |
| 302                    | 44°11'53.33" | 012°04'06.22" |
| 303                    | 44°11'53.68" | 012°04'05.21" |
| 304                    | 44°11'53.82" | 012°04'03.16" |
| 401                    | 44°11'55.65" | 012°03'53.33" |
| 402                    | 44°11'55.76" | 012°03'52.37" |
| 403                    | 44°11'56.31" | 012°03'53.68" |
| 404                    | 44°11'56.44" | 012°03'52.72" |



LEGEND

|  |                  |
|--|------------------|
|  | SELF MANOEUVRING |
|  | PUSH BACK        |

CAA'S Provisions:

TWY "A": max span 15 m  
 TWY "C"- "D": max span 36 m  
 TWY "E": only towed ACFT  
 AHP "P1": based flight schools fleet only