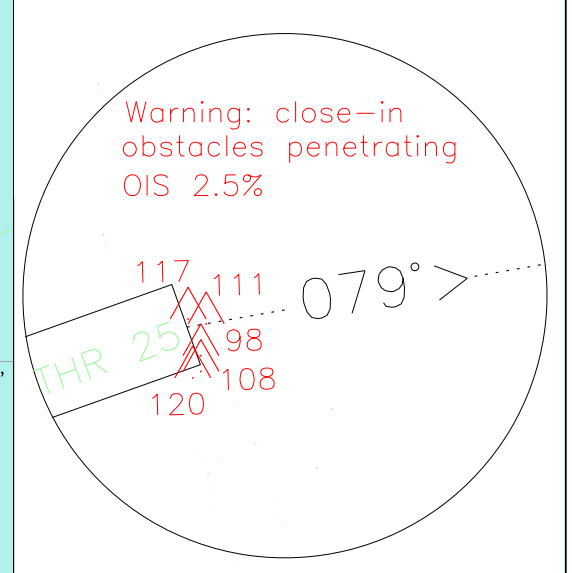
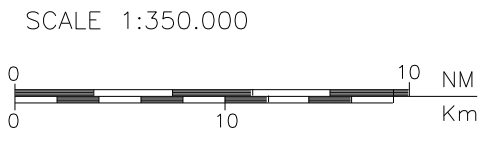


ICP & SID
 VOR
 RWY 07
 TREVISO/S.ANGELO
 TRANSITION ALT 6000

CHANGE: NEW PROCEDURE



* active according to hours reported in ENR 2.1.2
 **except the airspace of the ATS routes which remains under Padova ACC authority

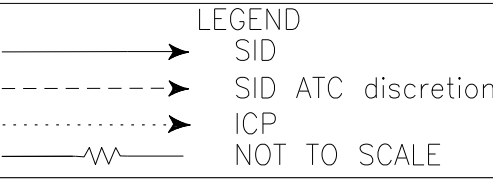


FREQUENCIES

TWR	Treviso TWR	118.700
APP	Treviso APP/Radar	120.405 (121.155)

REMARKS:
 ① IAS MAX 200 KT

AIRSPACE CLASSIFICATION
 SEE AIP ENR 1.4



INITIAL CLIMB PROCEDURE RWY 07**Initial climb description**

After take-off proceed on heading 079° (offset 14°) until leaving 500 ft then proceed along the assigned SID.

Remark:

Minimum climb gradient: 8% (490 ft/NM) due to obstacles and ATC reason until passing levels reported in each SID.

WARNING

Minimum climb gradient do not take account of close-in obstacles penetrating OIS 2.5%.

SID DESCRIPTION RWY 07

Initial climb procedure executed:

ALBET 7F

turn right on heading 281° to join and follow RDL 241 TVS VOR/DME (TR-241°) bound to ALBET.

-Turn after take off with IAS MAX 200 kt;

-Minimum climb gradient: 8% (490 ft/NM) until passing 5000 ft.

MCL: RDL 241/26 NM TVS, MCL 100; ALBET, FL110

VIC 7F

turn right on heading 281° to join and follow RDL 241 TVS VOR/DME (TR-241°) until 15 NM TVS DME then turn right to join and follow RDL 139 VIC VOR/DME (TR 319°) bound to VIC VOR/DME.

-Turn after take off with IAS MAX 200 kt;

- Minimum climb gradient: 8% (490 ft/NM) until passing FL 90.

MCL: VIC VOR/DME, FL120

INBUT 5A

turn right on heading 281° to join and follow RDL 241 TVS VOR/DME (TR-241°) until 15 NM TVS DME then turn left to join and follow RDL 139 VIC VOR/DME (TR 139°) bound to INBUT.

-Turn after take off with IAS MAX 200 kt;

- Minimum climb gradient: 8% (490 ft/NM) until passing FL 80

MCL: INBUT, FL110

ROVIG 5A

turn right on heading 281° to join and follow RDL 241 TVS VOR/DME (TR-241°) until 18 NM TVS DME then turn left to join and follow RDL 164 VIC VOR/DME (TR 164°) bound to ROVIG.

-Turn after take off with IAS MAX 200 kt;

Minimum climb gradient: 8% (490 ft/NM) until passing 6000 ft

MCA/MCL: RDL 164/14 NM VIC VOR/DME, FL100; ROVIG, AS CLEARED

ROKIB 5A

turn right on heading 281° to join and follow RDL 241 TVS VOR/DME (TR-241°) until 8NM TVS then turn right on RDL 331 CHI VOR/DME (TR 331°) bound to ARLUK, then ROKIB.

-Turn after take off with IAS MAX 200 kt;

- Minimum climb gradient: 8% (490 ft/NM) until passing FL100

MCL: ARLUK, FL95; ROKIB, FL140

VIC 5P (ATC Discretion)

proceed on heading 079° until 4.5 NM TVS DME then turn left to join and follow RDL 075 VIC VOR/DME (TR 255°) bound to VIC VOR/DME.

-Turn after take off with IAS MAX 200 kt;

- Minimum climb gradient: 8% (490 ft/NM).until passing FL 80

MCA/MCL: 4.5 NM TVS DME, 1800 FT; VIC VOR/DME, FL120

ROKIB 5C (ATC Discretion)

proceed on heading 079° until 4.5 NM TVS DME then turn left to join and follow RDL 075 VIC VOR/DME (TR 255°) until 10 NM VIC DME then turn right to join and follow RDL 331 CHI VOR/DME (TR 331°) bound to ARLUK, then ROKIB.

-Turn after take off with IAS MAX 200 kt;

- Minimum climb gradient: 8% (490 ft/NM) until passing FL 80.

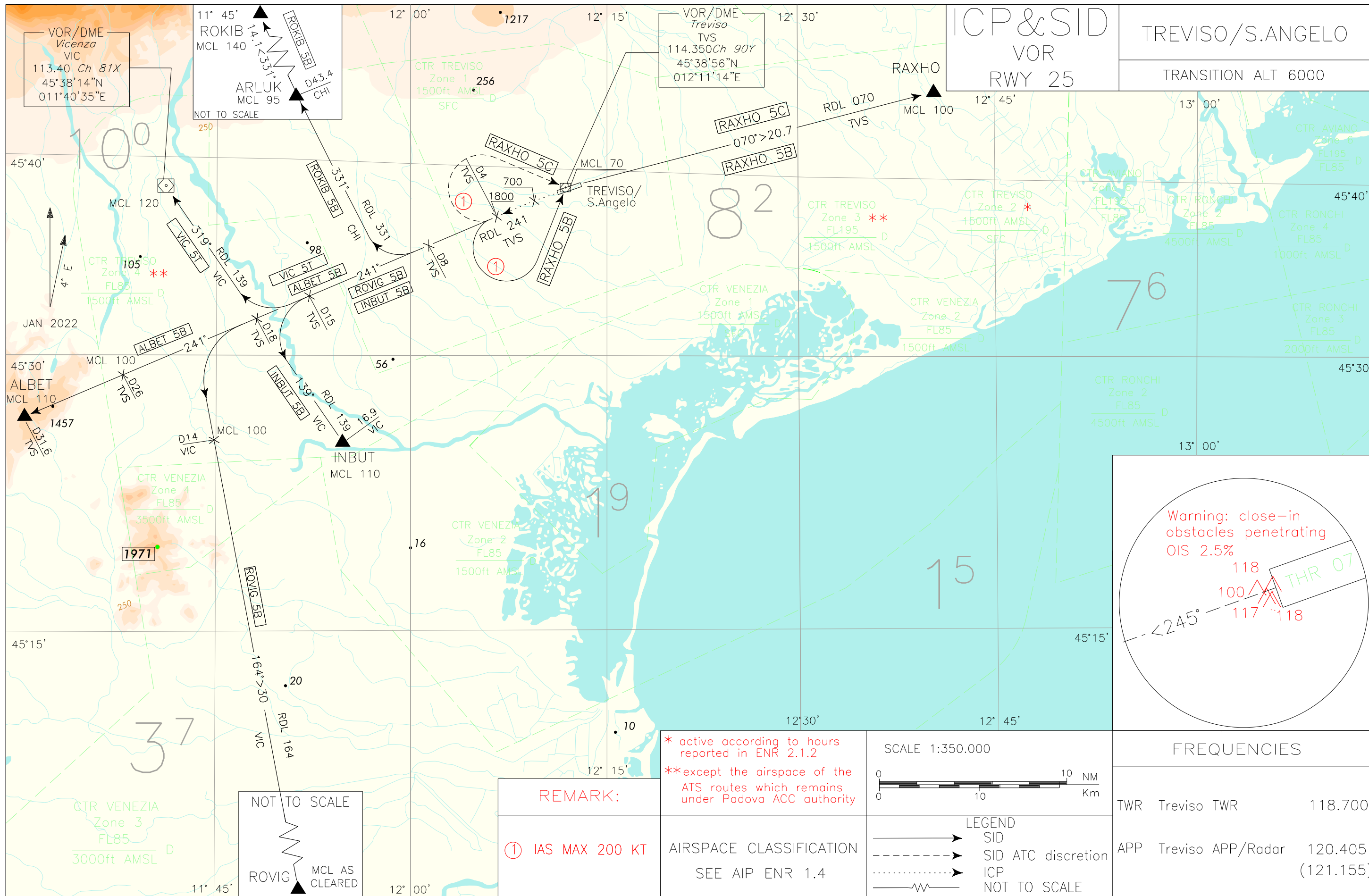
MCA/MCL: 4.5 NM TVS DME, 1800 FT; ARLUK, FL95; ROKIB, FL140

RAXHO 5A

proceed on heading 079° until 4.5 NM TVS DME then turn left to join and follow RDL 070 TVS VOR/DME (TR 070°) bound to RAXHO.

- Minimum climb gradient: 8% (490 ft/NM) until FL100.

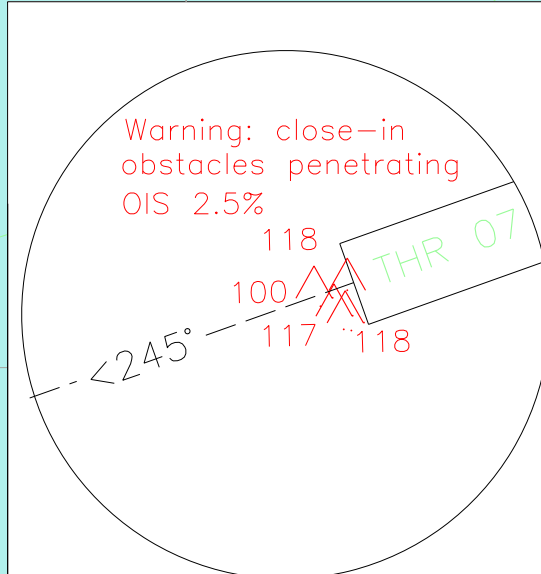
MCA/MCL: 4.5 NM TVS DME, 1800 FT; RAXHO, FL100



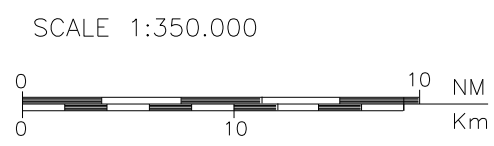
CHANGE: NEW PROCEDURE

ICP & SID
 VOR
 RWY 25

TREVISO/S.ANGELO
 TRANSITION ALT 6000



* active according to hours reported in ENR 2.1.2
 **except the airspace of the ATS routes which remains under Padova ACC authority



REMARK:
 ① IAS MAX 200 KT

AIRSPACE CLASSIFICATION
 SEE AIP ENR 1.4

LEGEND
 ———> SID
 - - - - -> SID ATC discretion
 ······> ICP
 ~~~~~> NOT TO SCALE

| FREQUENCIES |                   |                      |
|-------------|-------------------|----------------------|
| TWR         | Treviso TWR       | 118.700              |
| APP         | Treviso APP/Radar | 120.405<br>(121.155) |

## INITIAL CLIMB PROCEDURE RWY 25

### Initial climb description

After take-off proceed on RWY heading and passing 700 ft join RDL 241 TVS VOR/DME until 4NM TVS DME then proceed along the assigned SID.

MCA: 4 NM TVS DME, 1800 ft

### Remark:

**Minimum climb gradient: 8% (490 ft/NM) due to obstacles and ATC reason until passing levels reported in each SID.**

### WARNING

**Minimum climb gradient do not take account of close-in obstacles penetrating OIS 2.5%.**

## SID DESCRIPTION RWY 25

Initial climb procedure executed:

### ALBET 5B

Proceed on RDL 241 TVS VOR/DME (TR 241°) bound to ALBET.

- Minimum climb gradient: 8% (490 ft/NM).until passing FL 80.

MCL: RDL 241/26 NM TVS, MCL 100; ALBET, FL110

### VIC 5T

Proceed on RDL 241 TVS VOR/DME (TR 241°) until 15 NM TVS DME then turn right to join and follow RDL 139 VIC VOR/DME (TR 319°) bound to VIC VOR/DME.

- Minimum climb gradient: 8% (490 ft/NM) until FL 120.

MCL: VIC VOR/DME, FL 120

### INBUT 5B

Proceed on RDL 241 TVS VOR/DME (TR 241°) until 15 NM TVS DME then turn left to join and follow RDL 139 VIC VOR/DME (TR 139°) bound to INBUT.

- Minimum climb gradient: 8% (490 ft/NM).until passing FL 90.

MCL: INBUT, FL110

### ROVIG 5B

Proceed on RDL 241 TVS VOR/DME (TR 241°) until 18 NM TVS DME then turn left to join and follow RDL 164 VIC VOR/DME (TR 164°) bound to ROVIG.

- Minimum climb gradient: 8% (490 ft/NM) until passing FL 90.

MCL: RDL 164/14 NM VIC VOR/DME, FL100; ROVIG, AS CLEARED

### ROKIB 5B

Proceed on RDL 241 TVS VOR/DME (TR 241°) until 8 NM TVS DME then turn right on RDL 331 CHI VOR/DME (TR 331°) bound to ARLUK, then ROKIB.

- Minimum climb gradient: 8% (490 ft/NM) until passing FL 120.

MCL: ARLUK, FL 95; ROKIB, FL140

### RAXHO 5B

Turn left direct to TVS VOR/DME then join and follow RDL 070 TVS VOR/DME (TR 070°) bound to RAXHO.

- Turn after take off with IAS MAX 200 kt;

- Minimum climb gradient: 8% (490 ft/NM) until passing FL 70.

MCL: TVS VOR/DME, FL 70; RAXHO, FL 100

### RAXHO 5C (ATC Discretion)

Turn right direct to TVS VOR/DME then join and follow RDL 070 TVS VOR/DME (TR 070°) bound to RAXHO.

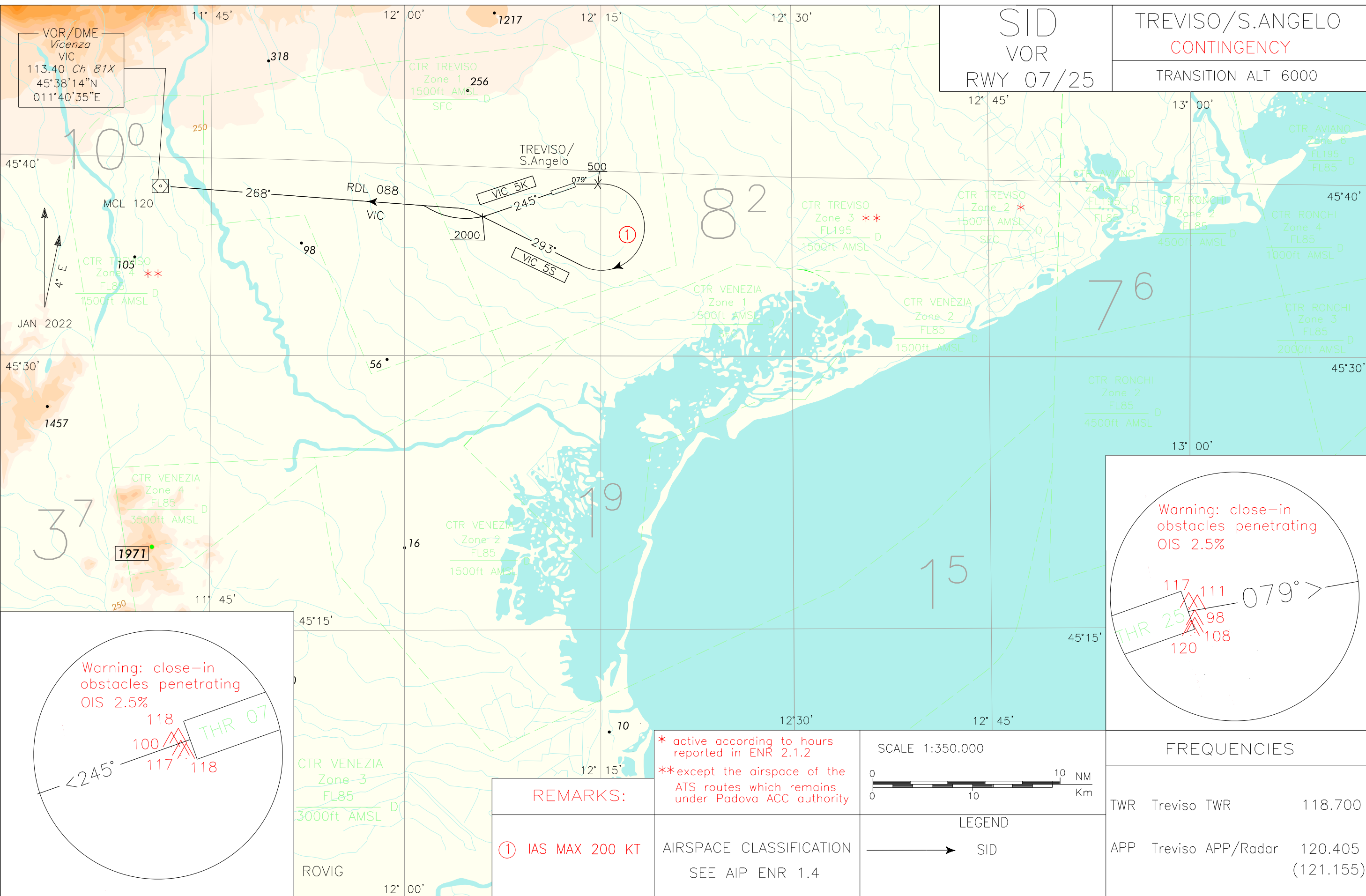
- Turn after take off with IAS MAX 200 kt;

- Minimum climb gradient: 8% (490 ft/NM) until passing FL 70

MCL: TVS VOR/DME, FL 70 ; RAXHO, FL 100

Intenzionalmente bianca

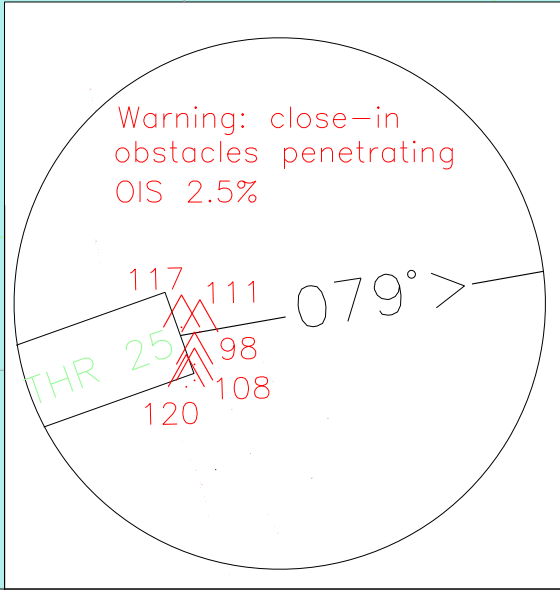
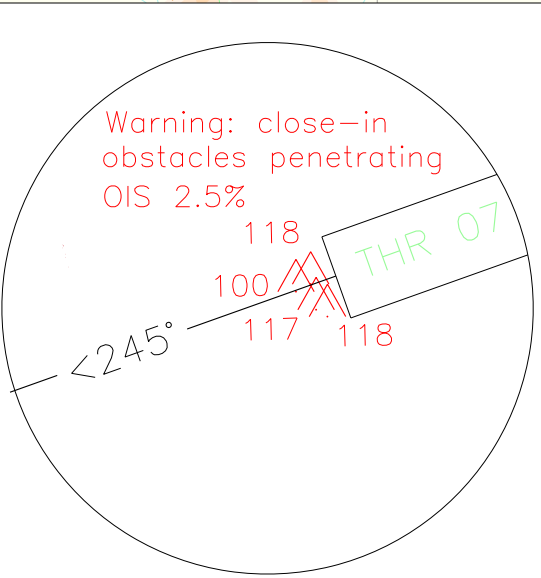
*Intentionally left blank*



SID  
VOR  
RWY 07/25

TREVISO/S.ANGELO  
CONTINGENCY  
TRANSITION ALT 6000

CHANGE: NEW PROCEDURE

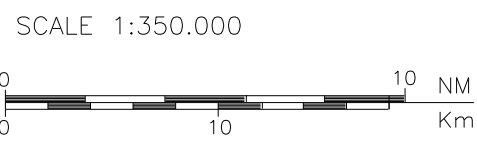


REMARKS:

① IAS MAX 200 KT

\* active according to hours reported in ENR 2.1.2  
\*\*except the airspace of the ATS routes which remains under Padova ACC authority

AIRSPACE CLASSIFICATION  
SEE AIP ENR 1.4



LEGEND  
→ SID

FREQUENCIES

|     |                   |                      |
|-----|-------------------|----------------------|
| TWR | Treviso TWR       | 118.700              |
| APP | Treviso APP/Radar | 120.405<br>(121.155) |

**SID DESCRIPTION RWY 07/25 (CONTINGENCY)**

**Remark: SID to be planned in case of TVS VOR/DME unserviceable only.**

**WARNING**

**There are close-in obstacles penetrating OIS 2.5%.**

**SID DESCRIPTION RWY 07 (CONTINGENCY)****VIC 5S**

After take-off proceed on heading 079° (offset 14°) and passing 500 ft turn right heading 293° to join and follow RDL 088 VIC VOR (TR- 268°) to VIC VOR/DME.

-Turn IAS MAX 200 kt;

-Minimum climb gradient: 8% (490 ft/NM).until passing FL 90.

MCL: VIC VOR/DME, FL120

**SID DESCRIPTION RWY 25 (CONTINGENCY)****VIC 5K**

After take-off proceed on RWY heading and passing 2000 ft turn right to join and follow RDL 088 VIC VOR (TR- 268°) to VIC VOR/DME.

-Minimum climb gradient: 9% (546 ft/NM) until FL 120.

MCL: VIC VOR/DME, FL 120



Intenzionalmente bianca

*Intentionally left blank*