

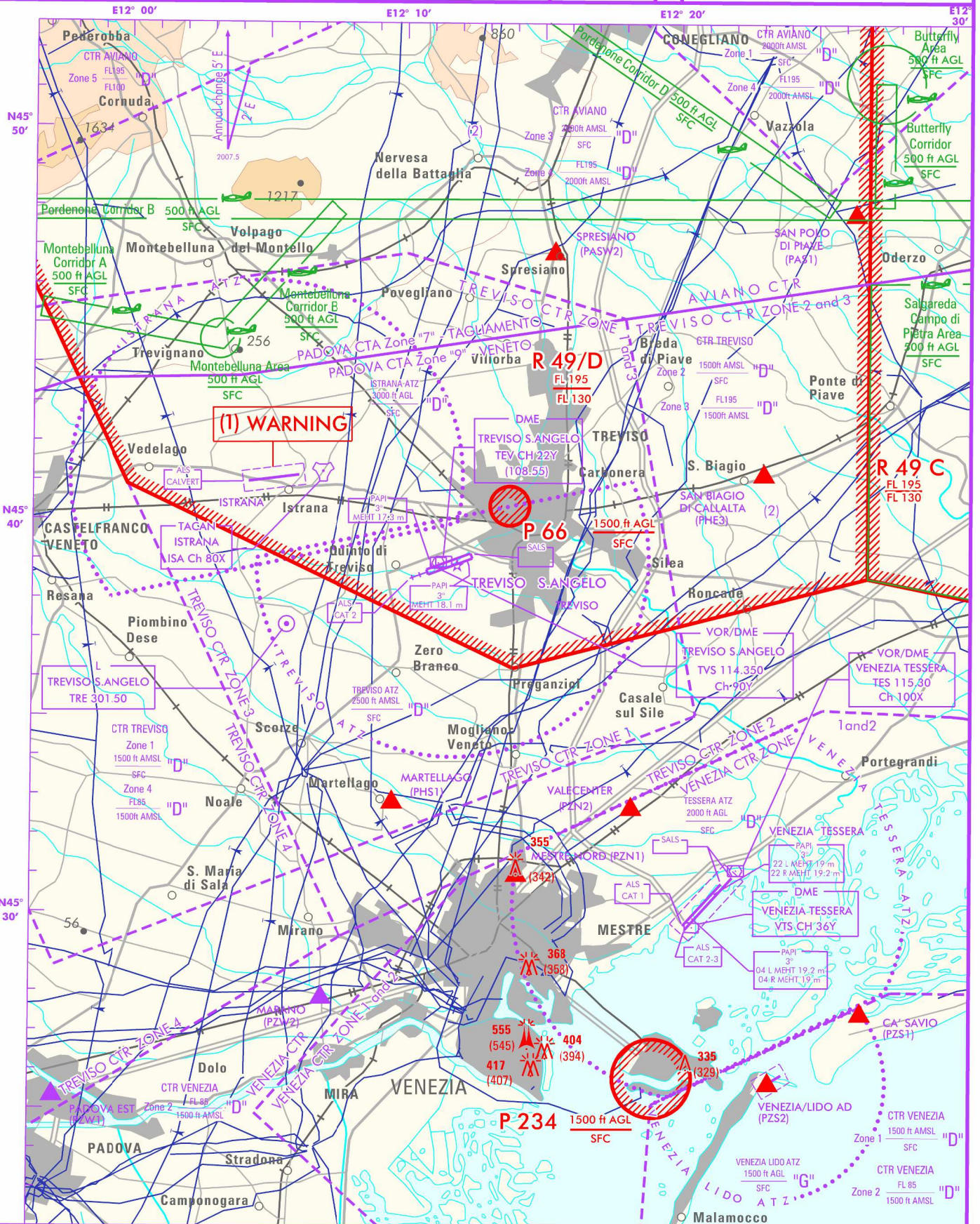
F I S Padova Info 126.425 124.150
 APP Treviso Approach { 120.405 (121.155)
 TWR Treviso Tower 118.700

AD ELEV
59

L I P H

TREVISO / S.ANGELO

CHANGE: NEW VOR/DME "TVS" IMPLEMENTED



<p>REMARKS</p> <p>(1) See AIP-Italia ENR 2.1.1.1 (2) Active according to hours reported in ENR 2.1.2</p>	<p>WARNING</p> <p>(1) Military AD Treviso Istrana with RWY configuration 08/26, not to be confused with Treviso S. Angelo AD with similar RWY configuration.</p>	<p>AIRSPACE CLASSIFICATION (See AIP-Italia ENR 1.4)</p> <p>TRANSITION ALT 6000 ft</p> <p>Bearings are magnetic. ELEV and ALT in ft.</p>
---	--	---

REMARK: Direct ILS approach procedure from EDEMO point is available ATC discretion only.

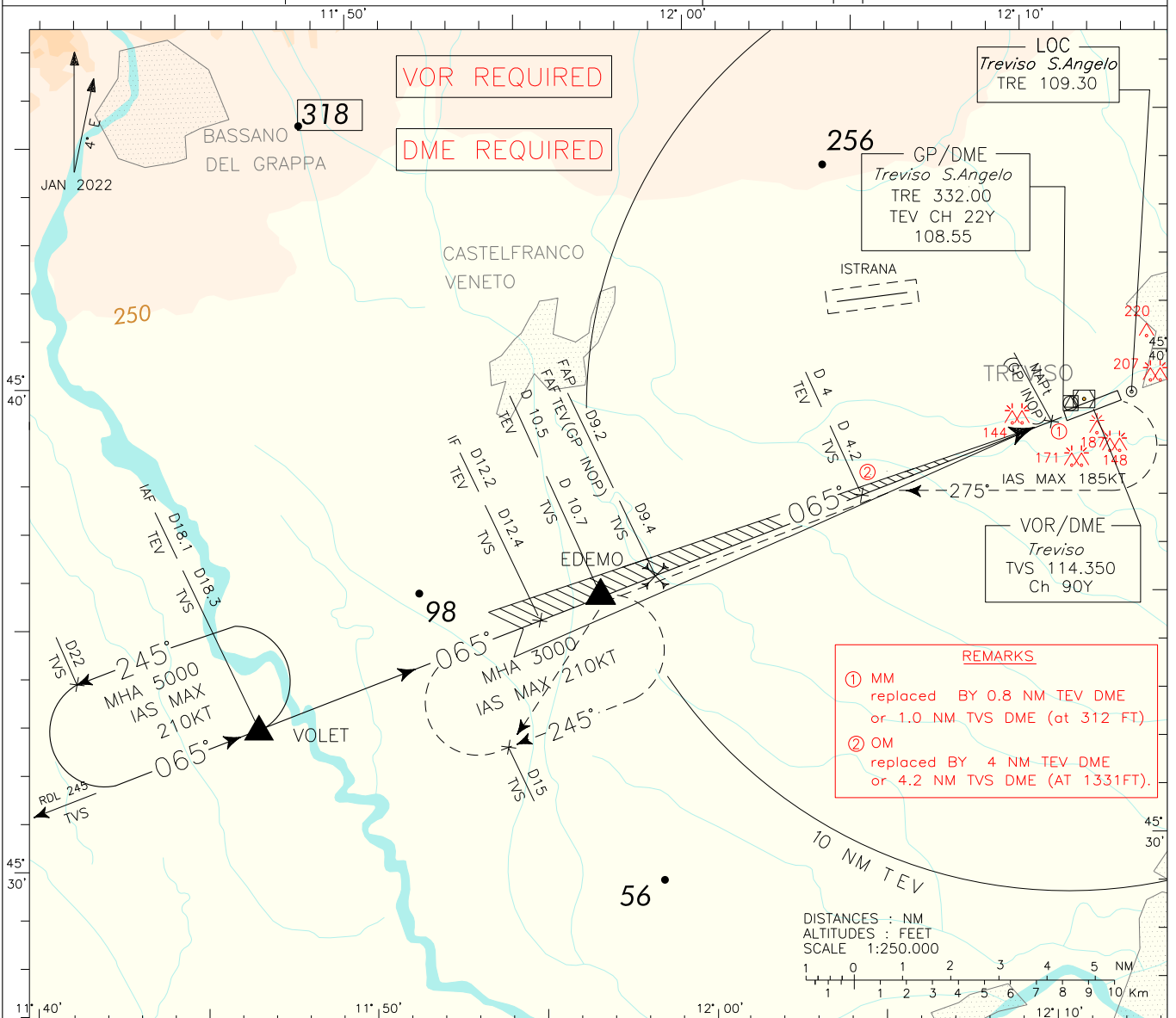
APP Treviso APP/Radar 120.405 (121.155)
TWR Treviso TWR 118.700

AD ELEV 59

LIPH TREVISO/S.ANGELO
ILS or LOC -Z RWY 07

DOC.8168-ED.6-2014

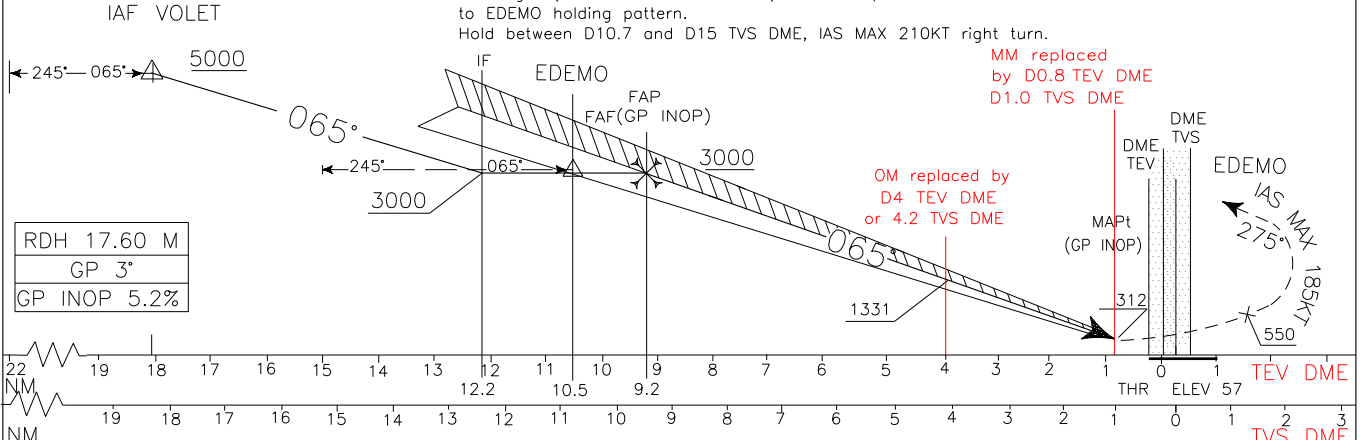
NEW PROCEDURE



REMARKS

- ① MM replaced BY 0.8 NM TEV DME or 1.0 NM TVS DME (at 312 FT)
- ② OM replaced BY 4 NM TEV DME or 4.2 NM TVS DME (AT 1331FT).

TRANSITION ALT 6000 MISSED APPROACH: Proceed on RWY heading climbing to 3000 ft. Passing 550 ft (not before D0.8 TEV or D1.0 TVS) turn right (TR 275° IAS MAX 185KT) to intercept and follow RDL 245 TVS VOR to EDEMO holding pattern.



STRAIGHT IN APPROACH	OCA (OCH)				GS	FT PER MN	DME TEV	ALT (HGT)	MNM SECT ALT	
	A	B	C	D					TVS	VOR
ILS CAT I	266 (209)	278 (221)	286 (229)	297 (240)	80	420	8	2599 (2542)	9200	1800
	180 (123)		192 (135)	206 (149)	100	530	7	2287 (2230)		
ILS CAT II					120	650	6	1968 (1911)		
GP INOP	550 (500)				140	740	5	1650 (1593)		
					160	840	4	1331 (1274)		
					180	950	3	1013 (956)		
					200	1060	2	694 (637)		
CIRCLING South of RWY only	560 (510)	580 (530)	660 (610)	750 (700)						



REMARK: Direct ILS approach procedure from EDEMO point is available ATC discretion only.

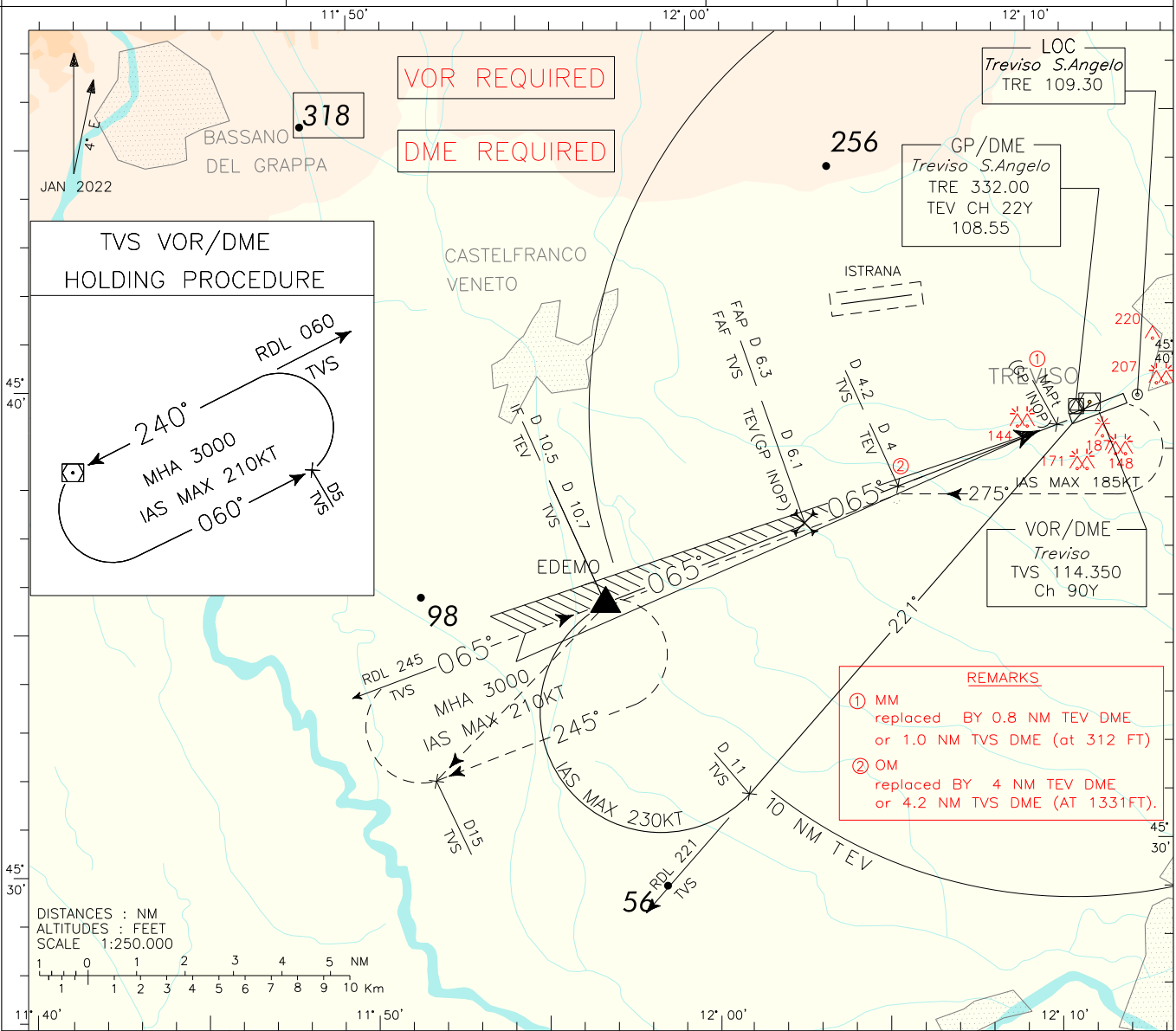
APP Treviso APP/Radar 120.405 (121.155)
TWR Treviso TWR 118.700

AD ELEV 59

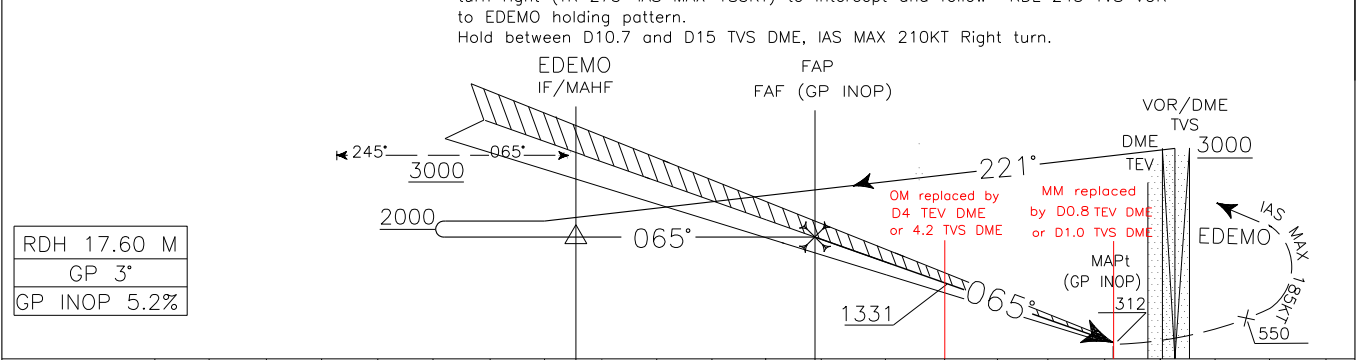
TREVISO/S.ANGELO
ILS or LOC-Y RWY 07

DOC.8168-ED.6-2014

NEW PROCEDURE



TRANSITION ALT 6000 MISSED APPROACH: Proceed on RWY heading climbing to 3000 ft. Passing 550 ft (not before D0.8 TEV or D1.0 TVS) turn right (TR 275° IAS MAX 185KT) to intercept and follow RDL 245 TVS VOR to EDEMO holding pattern. Hold between D10.7 and D15 TVS DME, IAS MAX 210KT Right turn.



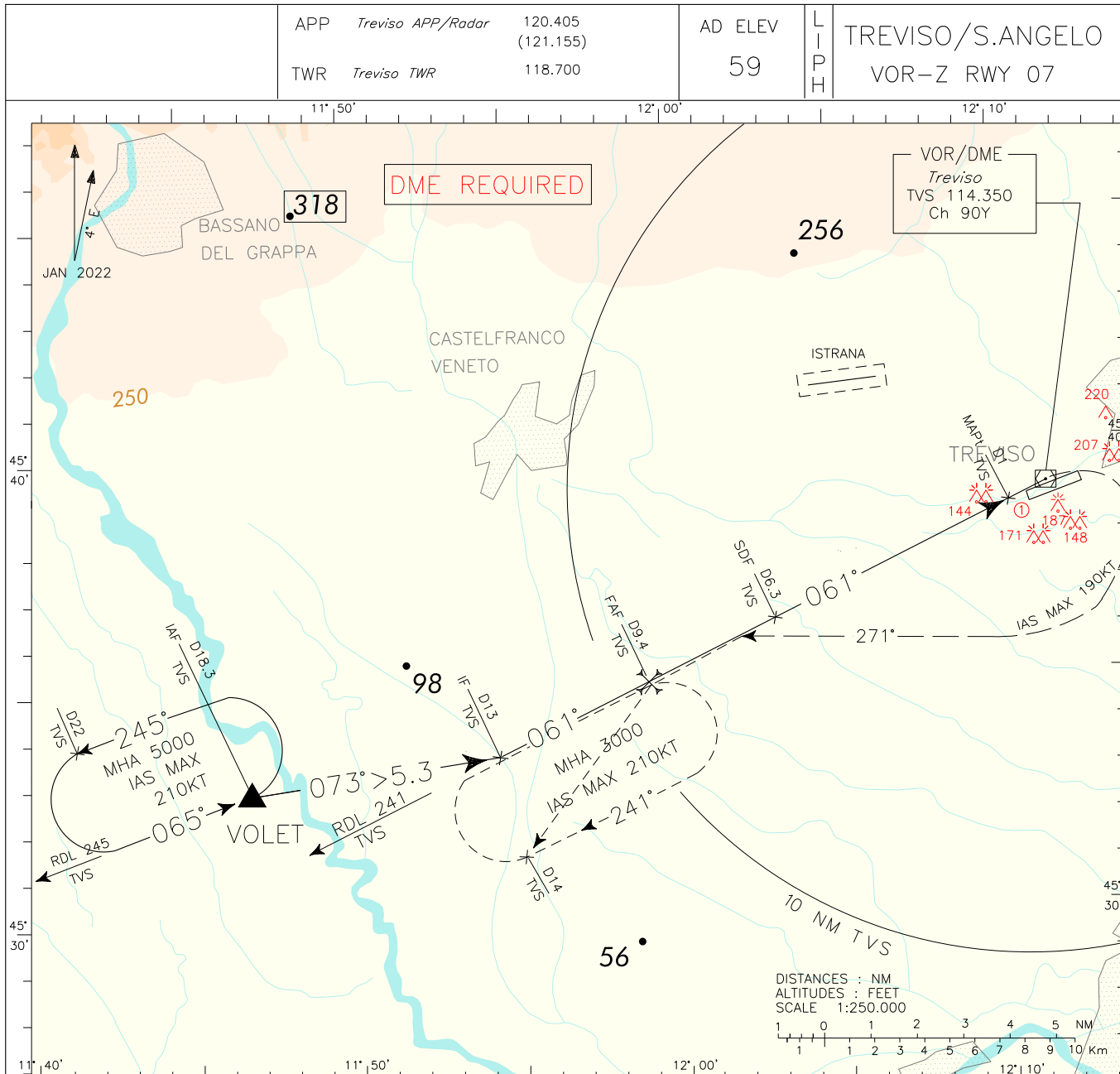
NM	19	18	17	16	15	14	13	12	11	10	9	8	7	6	5	4	3	2	1	0	1	2	3
										10.5				6.1					THR	ELEV 57			

STRAIGHT IN APPROACH	OCA (OCH)				GS	FT PER MN	DME TEV	ALT (HGT)	MNM SECT ALT	
	ILS CAT I	A	B	C					TVS	VOR
ILS CAT I	266 (209)	278 (221)	286 (229)	297 (240)	80	420	2000 (1943)	9200	220	
ILS CAT II	180 (123)		192 (135)	206 (149)	100	530	1650 (1593)	085	1800	
GP INOP	550 (500)				120	650	1331 (1274)	3100	020	
CIRCLING	South of RWY only	560 (510)	580 (530)	660 (610)	750 (700)	140	740	1013 (956)		
						160	840	694 (637)		
						180	950	312 (255)		

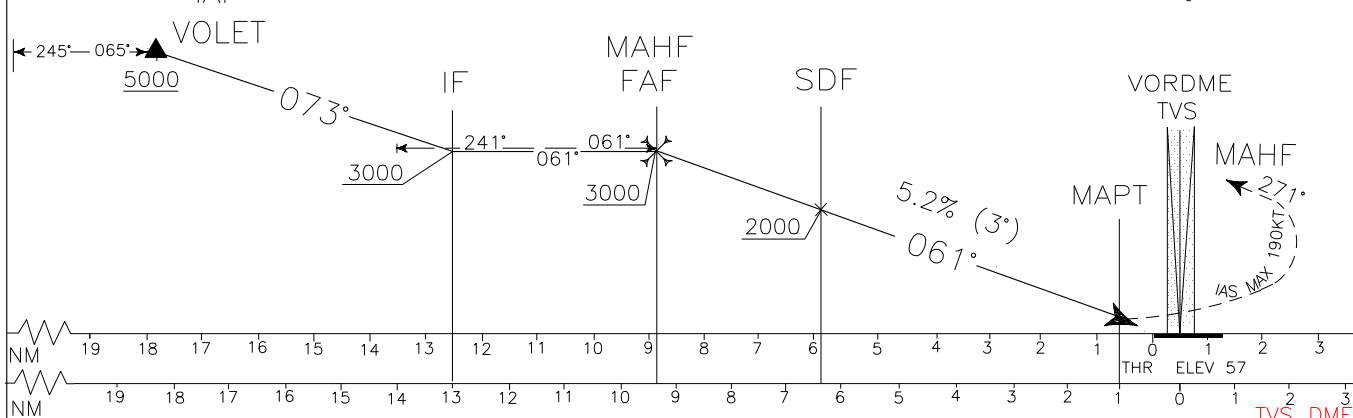


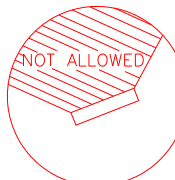
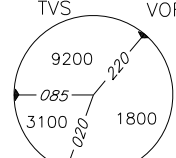
DOC.8168-ED.6-2014

NEW PROCEDURE



TRANSITION ALT 6000 MISSED APPROACH: As soon as possible, turn right (TR 271° IAS MAX 190KT) climbing to 3000 ft to intercept and follow RDL 241 (TR 241°) TVS VOR to MAHF (RDL 241/9.4 NM TVS VOR/DME). Hold between D9.4 and D14 NM TVS DME inbound track 061°, IAS MAX 210KT, right turn.

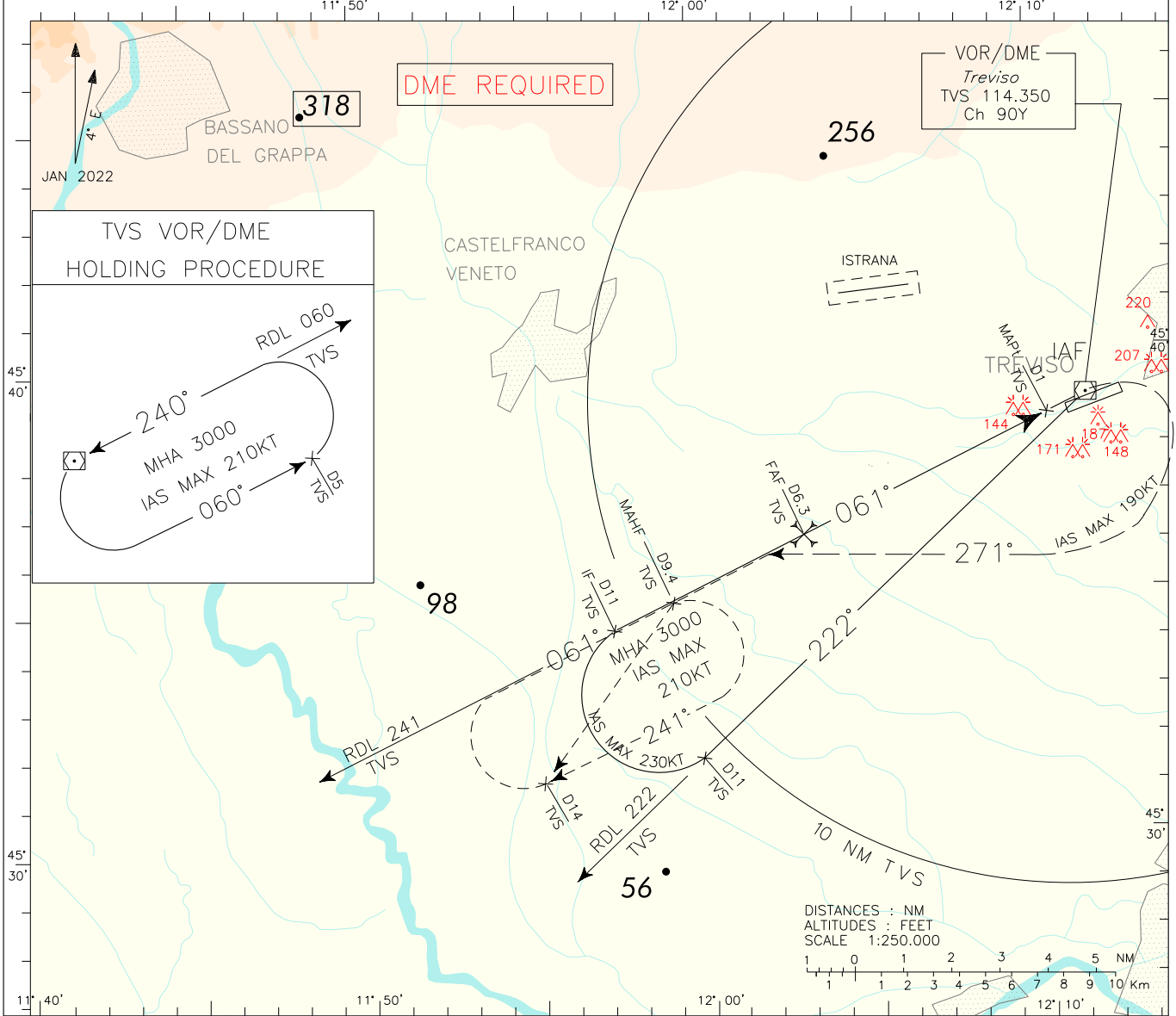


OCA (OCH)		A	B	C	D		GS	FT PER MN	DME TVS	ALT (HGT)	
STRAIGHT IN APPROACH	VOR RWY 07	510 (460)					80	420	8	2543 (2486)	
							100	530	7	2225 (2168)	
							120	640	6.3	2000 (1943)	
CIRCLING	South of RWY only	560 (510)	580 (530)	660 (610)	750 (700)	140	740	5	1588 (1531)		
						160	850	4	1269 (1212)		
						180	960	3	951 (894)		
								1.6	510 (453)		

DOC.8168-ED.6-2014

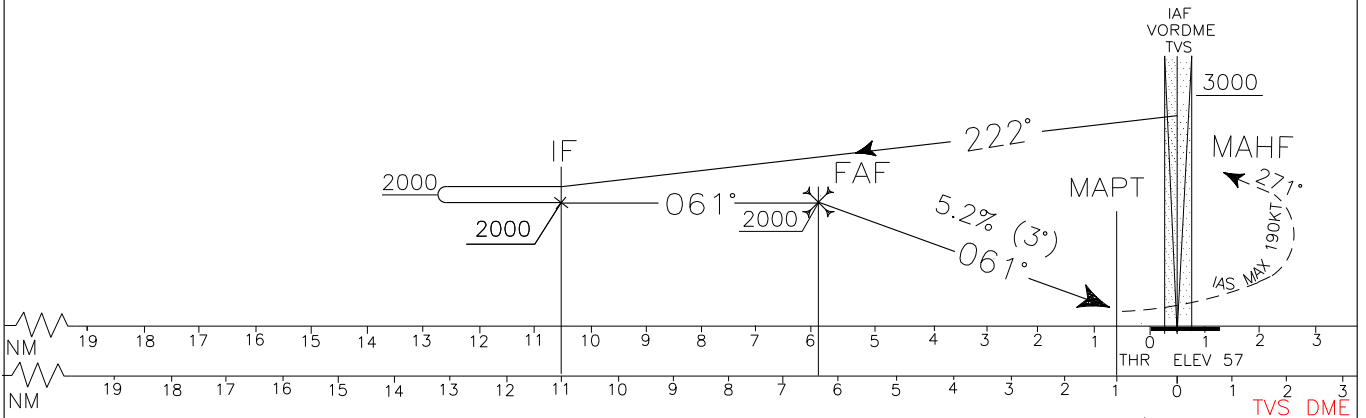
NEW PROCEDURE

APP	Treviso APP/Radar	120.405 (121.155)	AD ELEV	59	L I P H	TREVISO/S.ANGELO VOR-Y RWY 07
TWR	Treviso TWR	118.700				



TRANSITION ALT 6000

MISSED APPROACH: As soon as possible, turn right (TR 271° IAS MAX 190KT) climbing to 3000 ft to intercept and follow RDL 241 (TR 241°) TVS VOR to MAHF (RDL 241/9.4 NM TVS VOR/DME). Hold between D9.4 and D14 NM TVS DME inbound track 061°, IAS MAX 210KT, right turn.



OCA (OCH)		A	B	C	D		GS	FT PER MN	DME TVS	ALT (HGT)	MNM SECT ALT TVS VOR
STRAIGHT IN APPROACH	VOR RWY 07	510 (460)					80	420			
	CIRCLING <small>South of RWY only</small>	560 (510)	580 (530)	660 (610)	750 (700)		100	530			
						120	640	6.3	2000 (1943)		
						140	740	5	1588 (1531)		
						160	850	4	1269 (1212)		
						180	960	3	951 (894)		
								1.6	510 (453)		