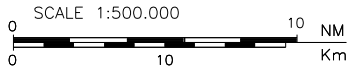


# WARNING

LINK ROUTES PARTIALLY OUTSIDE CONTROLLED AIRSPACE

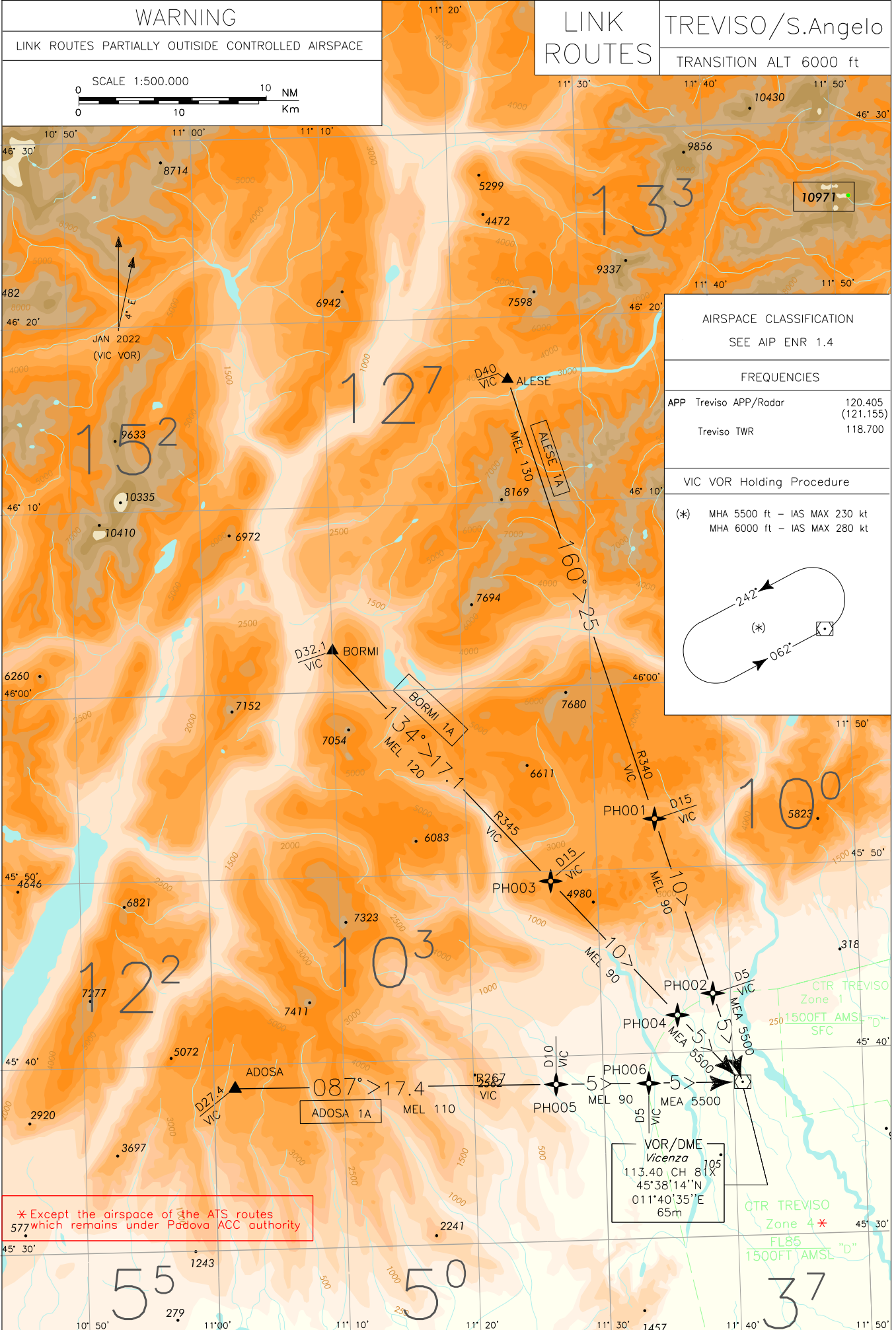


# LINK ROUTES

## TREVISO/S. Angelo

TRANSITION ALT 6000 ft

CHANGE: MAG VAR



**AIRSPACE CLASSIFICATION**  
SEE AIP ENR 1.4

**FREQUENCIES**

APP Treviso APP/Radar	120.405 (121.155)
Treviso TWR	118.700

**VIC VOR Holding Procedure**

(\*) MHA 5500 ft - IAS MAX 230 kt  
MHA 6000 ft - IAS MAX 280 kt

**VOR/DME**  
Vicenza  
113.40 CH 81X  
45°38'14"N  
011°40'35"E  
65m

\* Except the airspace of the ATS routes 577 which remains under Padova ACC authority

**LINK ROUTES Treviso S. Angelo****ALESE 1A**

ALESE – TR 160° (RDL 340 VIC VOR) – PH001 – PH002 –  
VIC VOR/DME.

**ALESE 1A**

ALESE – TR 160° (RDL 340 VIC VOR) – PH001 – PH002  
– VIC VOR/DME.

MEL/MEA: ALESE – PH001: FL 130; PH001 – PH002: FL 90; PH002 – VIC VOR/DME: 5500 FT.

**BORMI 1A**

BORMI – TR 134° (RDL 314 VIC VOR) – PH003 – PH004 –  
VIC VOR/DME.

**BORMI 1A**

BORMI – TR 134° (RDL 314 VIC VOR) – PH003 – PH004  
– VIC VOR/DME.

MEL/MEA: BORMI – PH003: FL 120; PH003 – PH004: FL 90; PH004 – VIC VOR/DME: 5500 FT.

**ADOSA 1A**

ADOSA – TR 087° (RDL 267 VIC VOR) – PH005 – VIC  
VOR/DME.

**ADOSA 1A**

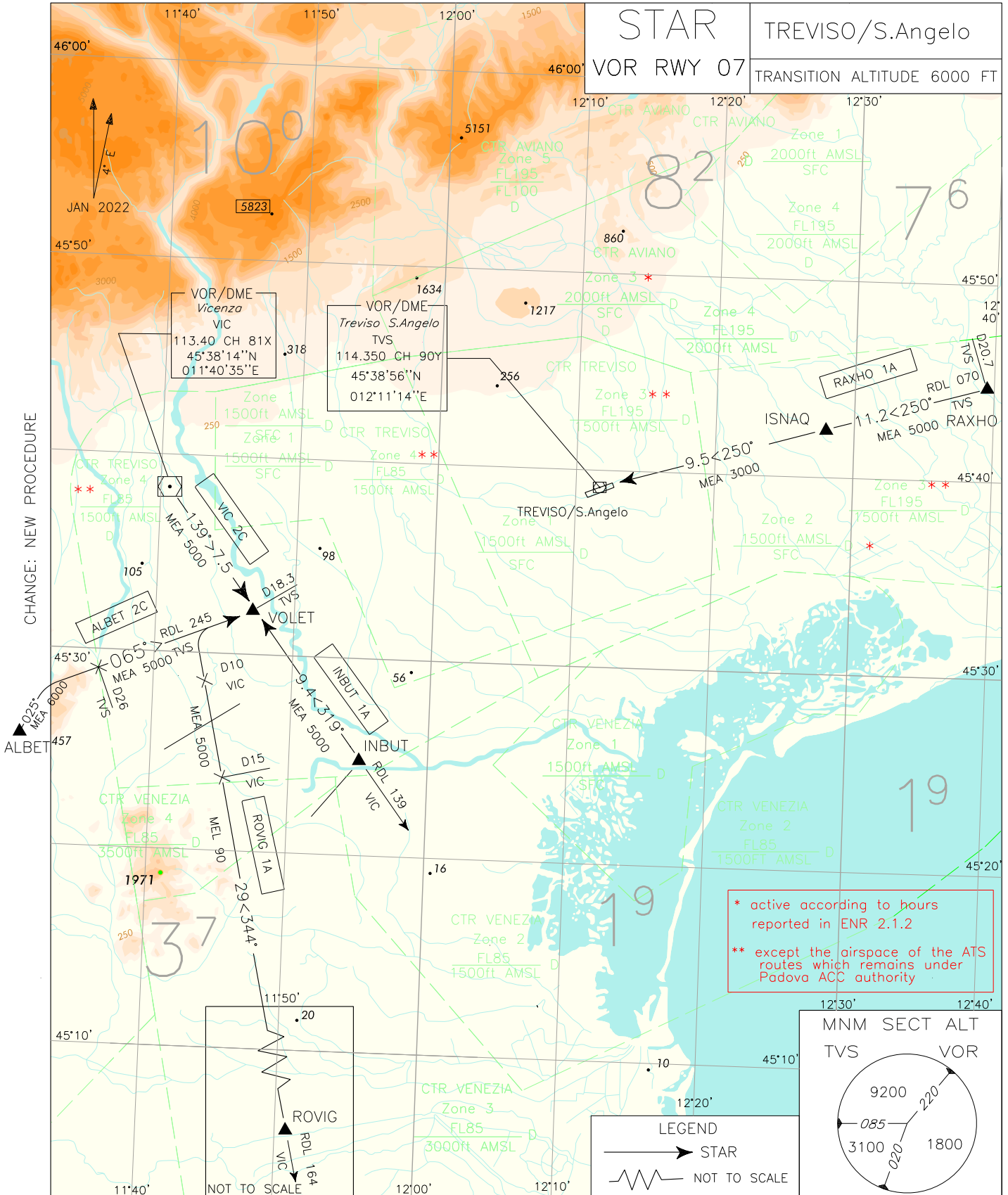
ADOSA – TR 087° (RDL 267 VIC VOR) – PH005 – VIC  
VOR/DME.

MEL/MEA: ADOSA – PH005: FL 110; PH005 – PH006: FL 90; PH006 – VIC VOR/DME: 5500 FT.

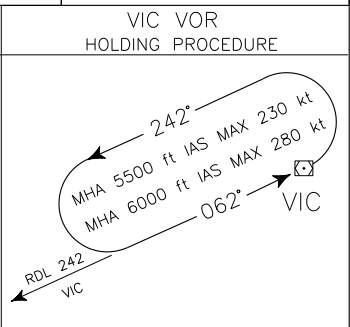
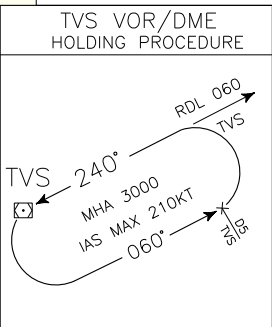
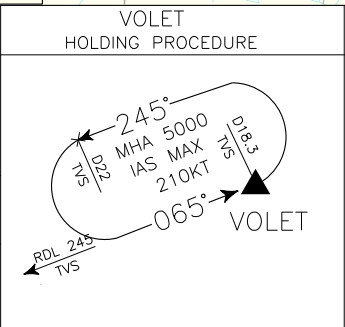
Waypoint	Latitude	Longitude
PH001	N45523971	E011343924
PH002	N45430330	E011383667
PH003	N45492254	E011261331
PH004	N45415775	E011354833
PH005	N45382435	E011261984
PH006	N45382057	E011332739

Intenzionalmente bianca

*Intentionally left blank*



<b>FREQUENCIES</b>
APP Treviso APP/Radar 120.405 (121.155)
TWR Treviso TWR 118.700
<b>AIRSPACE CLASSIFICATION</b> SEE AIP ENR 1.4
SCALE 1:500,000 0 10 10 NM Km



**STAR VOR RWY 07 Treviso S. Angelo****ALBET 2C**

ALBET– turn right heading 025° to join and follow RDL 245 TVS VOR/DME (TR 065°) bound to VOLET.

MEA: ALBET – RDL 245/26 NM TVS VOR/DME: 6000 FT; RDL 245/26 NM TVS VOR/DME - VOLET: 5000 FT.

**ROVIG 1A**

ROVIG –TR 344° (RDL 164 VIC VOR/DME) until 10 NM VIC DME then turn right to join and follow RDL 245 TVS VOR/DME (TR 065°) bound to VOLET.

MEA/MEL: ROVIG – RDL 164/15 NM VIC VOR/DME: FL 90; RDL 164/10 NM VIC VOR/DME - VOLET: 5000 FT.

**INBUT 1A**

INBUT – TR 319° (RDL 139 VIC VOR/DME) – VOLET.

MEA: 5000 FT.

**VIC 2A**

VIC VOR/DME – TR 139° (RDL 139 VIC VOR/DME) – VOLET.

MEA: 5000 FT.

**RAXHO 1A**

RAXHO – TR 250° (RDL 070 TVS VOR/DME) – ISNAQ – TVS VOR/DME.

MEA: RAXHO – ISNAQ: 5000 FT; ISNAQ – TVS VOR/DME: 3000 FT

Intenzionalmente bianca

*Intentionally left blank*