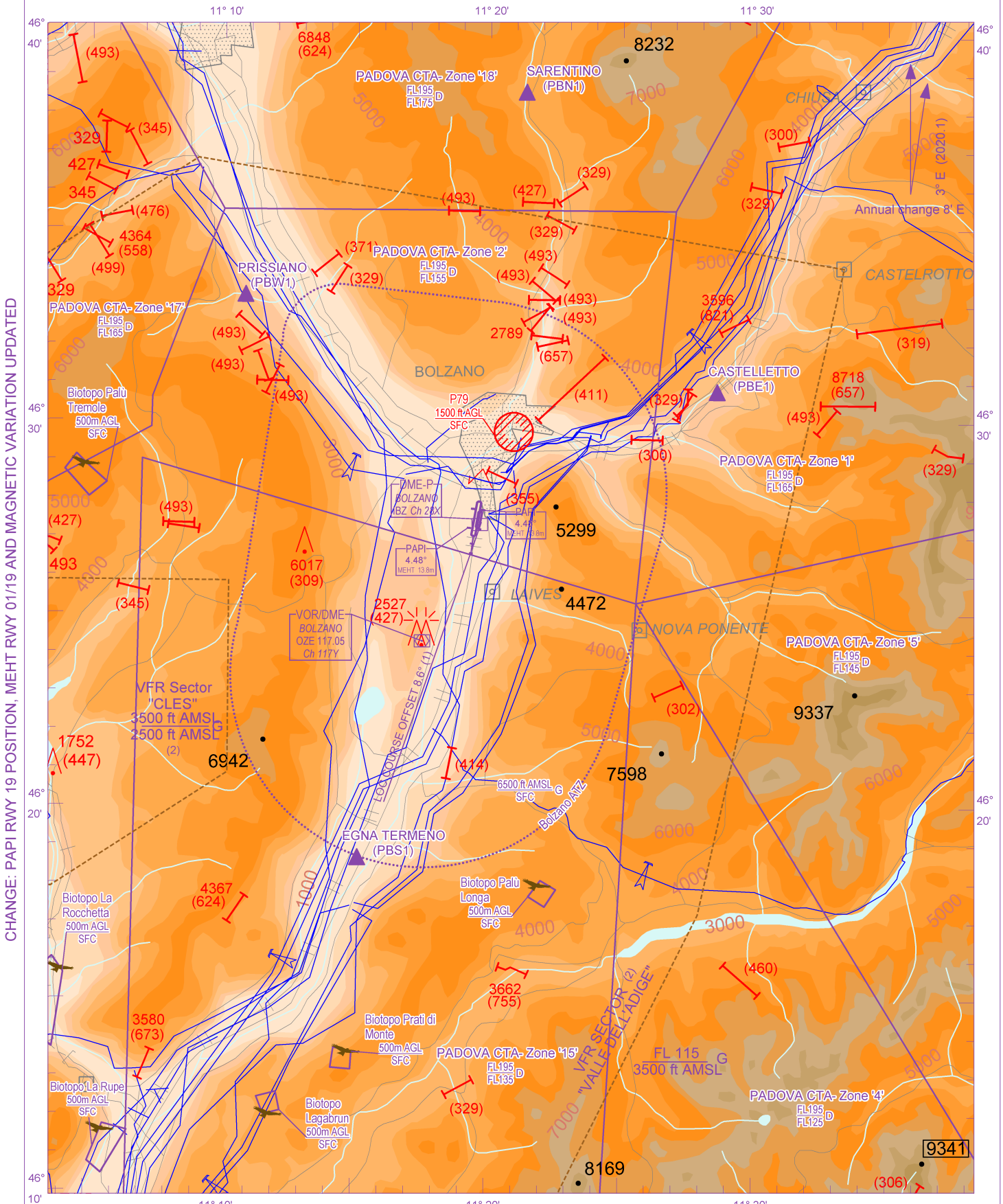


ICAO - VISUAL APPROACH CHART

SCALE 1:250.000	FIS Padova Information 124.150 ACS Padova Radar 120.725 AFIS Bolzano Aerodrome INFO 125.900 120.600	AD ELEV <b>787</b>	L I P B	<b>BOLZANO</b>
-----------------	--	-----------------------	------------------	----------------

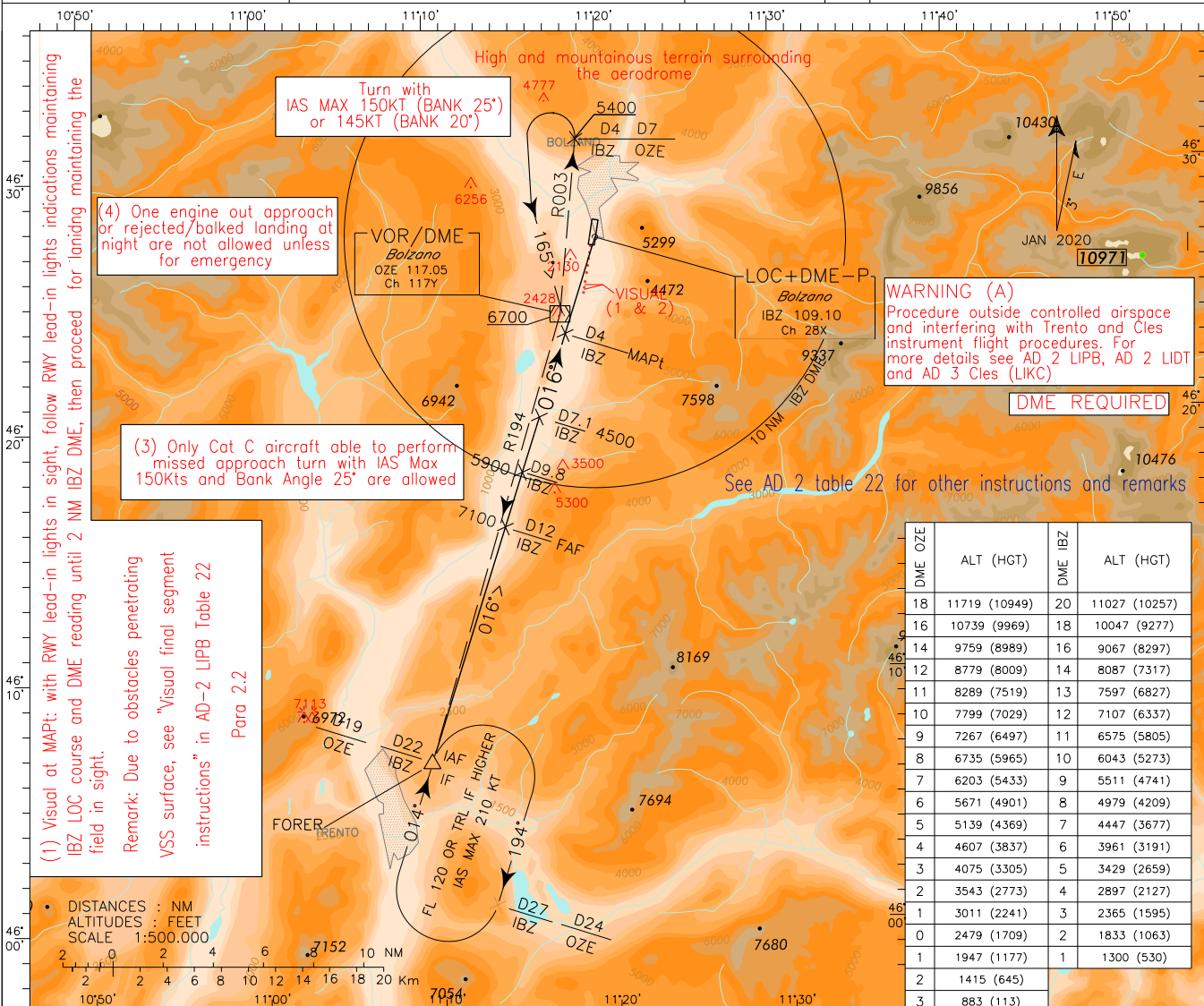


CHANGE: PAPI RWY 19 POSITION, MEHT RWY 01/19 AND MAGNETIC VARIATION UPDATED

AIRSPACE CLASSIFICATION See AIP ENR 1.4  TRANSITION ALT 10000 FT  ELEV AND ALT IN FT IF NOT OTHERWISE INDICATED	REMARK (1) See also AD 2 LIPB Table 22  (2) For more details about VFR sectors 'Valle dell'Adige' and 'Cles' see also ENR 2.1.1.1	WARNING
--	--	---------

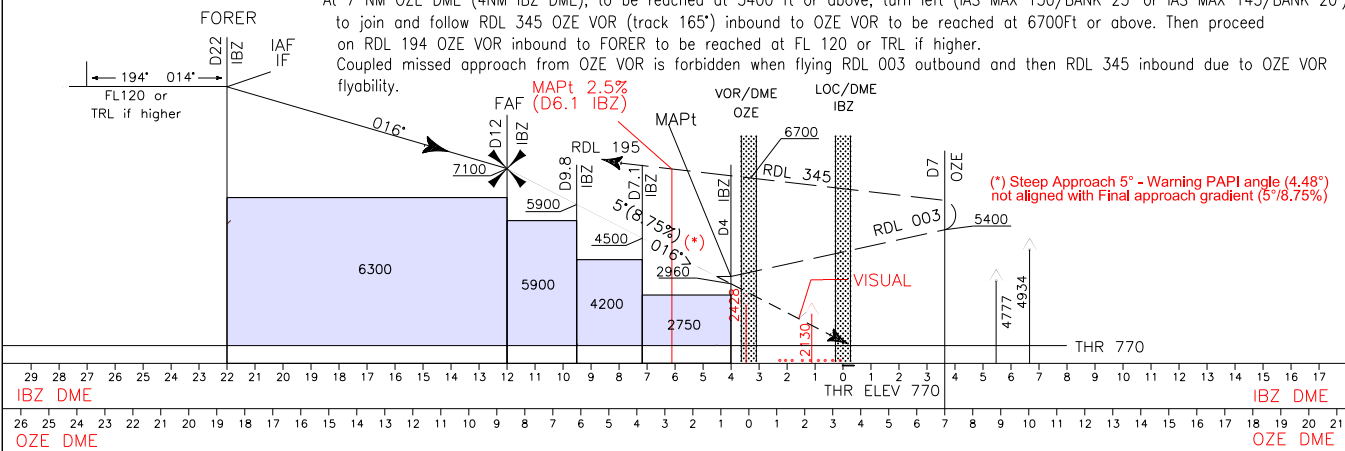
NON STANDARD ICAO

(2) Visual allowed with following minima: - Visibility 5 km (8 km during night-time operations ) - Ceiling 2700 ft (3500 ft AMSL)	FIS <i>Padova Info</i>	124.150	AD ELEV	L I P B  <b>BOLZANO</b> LOC+DME INSTRUMENT GUIDED CLOUD BREAKING PROCEDURE RWY 01 CAT A/B/C/ ACFT
	ACS <i>Padova Radar</i>	120.725 125.900	787	
	AFIS <i>Bolzano Aerodrome Info</i>	120.600		



DME OZE	ALT (HGT)	DME IBZ	ALT (HGT)
18	11719 (10949)	20	11027 (10257)
16	10739 (9969)	18	10047 (9277)
14	9759 (8989)	16	9067 (8297)
12	8779 (8009)	14	8087 (7317)
11	8289 (7519)	13	7597 (6827)
10	7799 (7029)	12	7107 (6337)
9	7267 (6497)	11	6575 (5805)
8	6735 (5965)	10	6043 (5273)
7	6203 (5433)	9	5511 (4741)
6	5671 (4901)	8	4979 (4209)
5	5139 (4369)	7	4447 (3677)
4	4607 (3837)	6	3915 (3145)
3	4075 (3305)	5	3383 (2613)
2	3543 (2773)	4	2851 (2081)
1	3011 (2241)	3	2319 (1549)
0	2479 (1709)	2	1787 (1017)
1	1947 (1177)	1	1300 (530)
2	1415 (645)		
3	883 (113)		

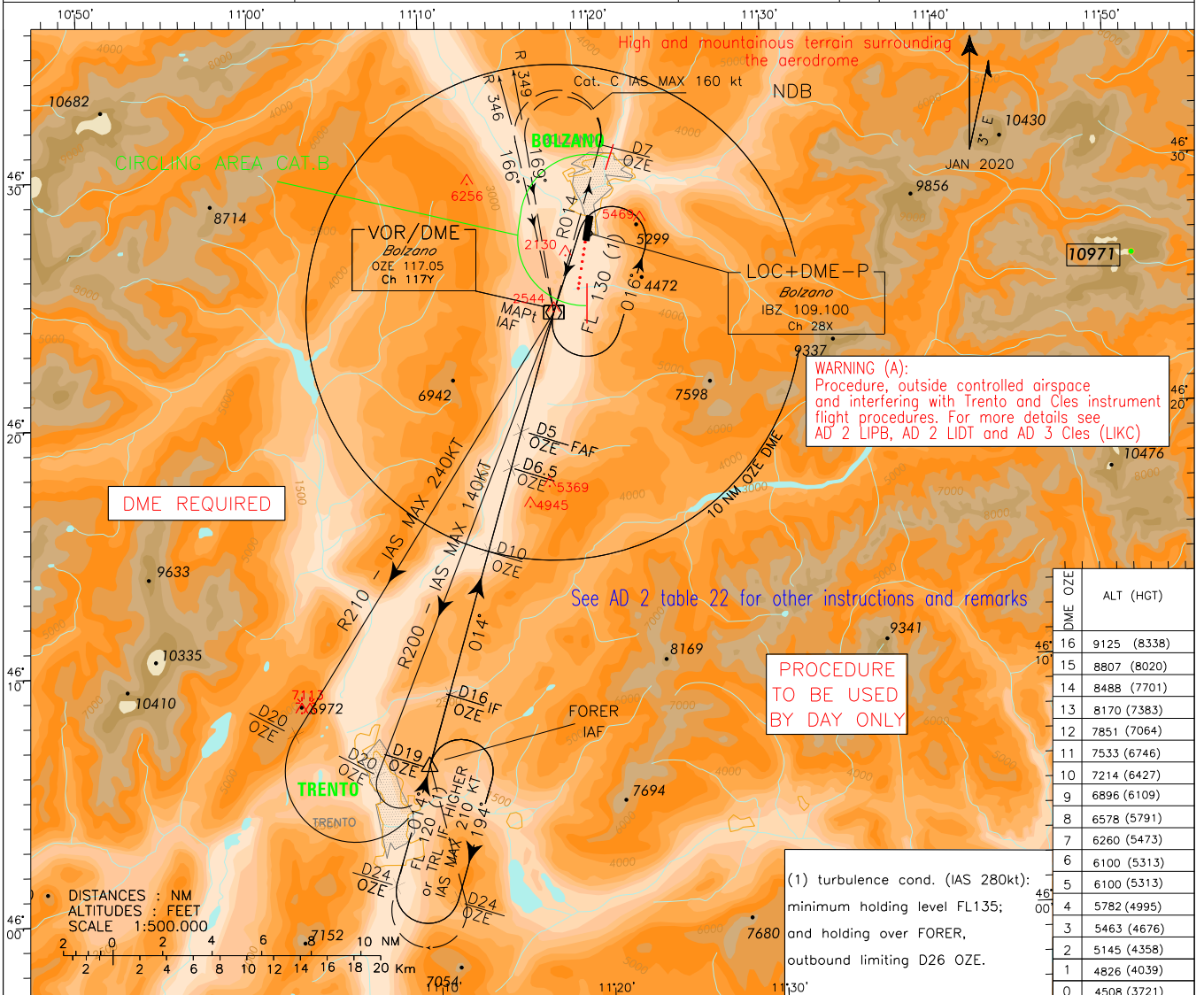
TRANSITION ALT 10000 Missed Approach: At 4 NM IBZ DME turn left to follow RDL 003 OZE VOR climbing to FL120 or TRL if higher. At 7 NM OZE DME (4NM IBZ DME), to be reached at 5400 ft or above, turn left (IAS MAX 150/BANK 25° or IAS MAX 145/BANK 20°) to join and follow RDL 345 OZE VOR (track 165°) inbound to OZE VOR to be reached at 6700ft or above. Then proceed on RDL 194 OZE VOR inbound to FORER to be reached at FL 120 or TRL if higher. Coupled missed approach from OZE VOR is forbidden when flying RDL 003 outbound and then RDL 345 inbound due to OZE VOR flyability.



STRAIGHT IN APPROACH		OCA (OCH)			(**) TIMING NOT ALLOWED FOR DEFINING MAPt	FAF-MAPt (8 NM)		MAPt-THR (3.8 NM)		MNM SECT ALT OZE VOR
LOC + DME	M. A. MNM CLIMB GRADIENT 6%	A	B	C		FT PER MIN	GS	(**) FT MIN	(**) GS	
		2960 (2190)			(***) TRAFFIC CIRCUIT FOR RWY 19 ALLOWED ONLY DURING DAYLIGHT AND WEST OF THE FIELD	1420	160	1420	160	179° FL 150 15000 ft 307° FL 140 12500 ft
	M. A. MNM CLIMB GRADIENT 2.5%	4070 (3300)				1240	140	1240	140	
		NOT ALLOWED (***)				1060	120	1060	120	
						890	100	890	100	
						710	80	710	80	

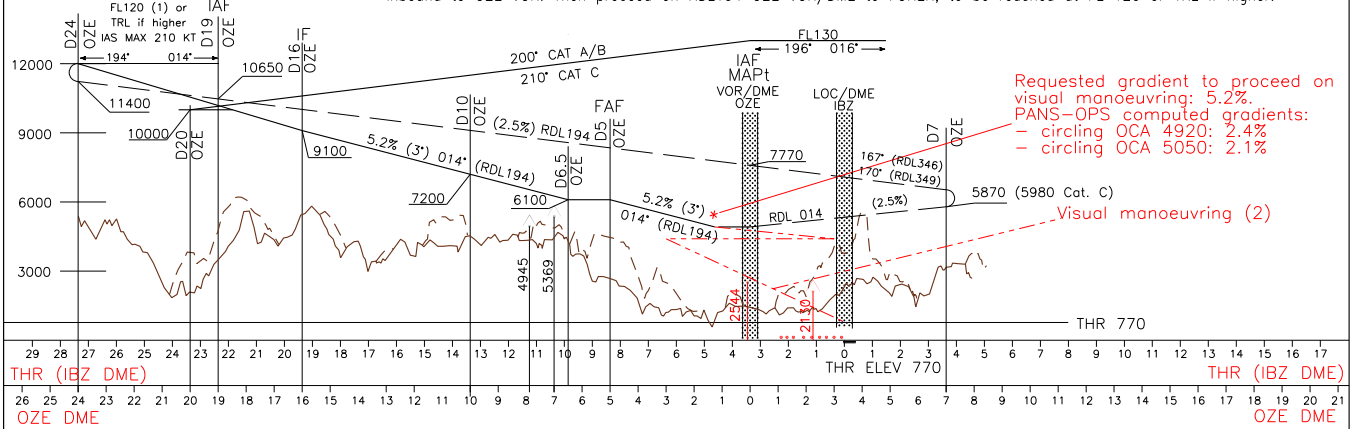
Only specifically qualified crews with authorized type of ACFT are allowed to perform this procedure (see AD 2 LIPB Table 23).

(2) WARNING: circling (CAT A/B) to land to RWY 01/19 is allowed only at specific conditions as reported in VAC RWY 19 (LIPB 5-7) and VAC RWY 01 (LIPB 5-9)	FIS <i>Padova Info</i>	124.150	AD ELEV <b>787</b>	L I P B	<b>BOLZANO</b> VOR $\alpha$ CAT A/B/C ACFT
	ACS <i>Padova Radar</i>	120.725 125.900			
	AFIS <i>Bolzano Aerodrome Info</i>	120.600			



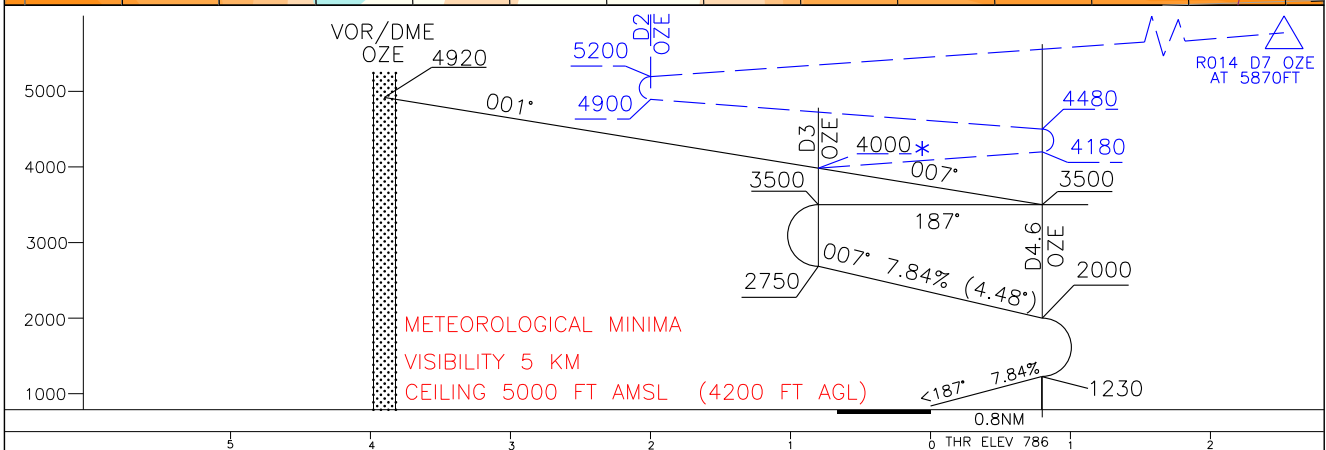
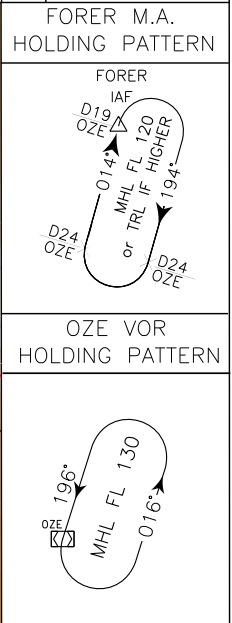
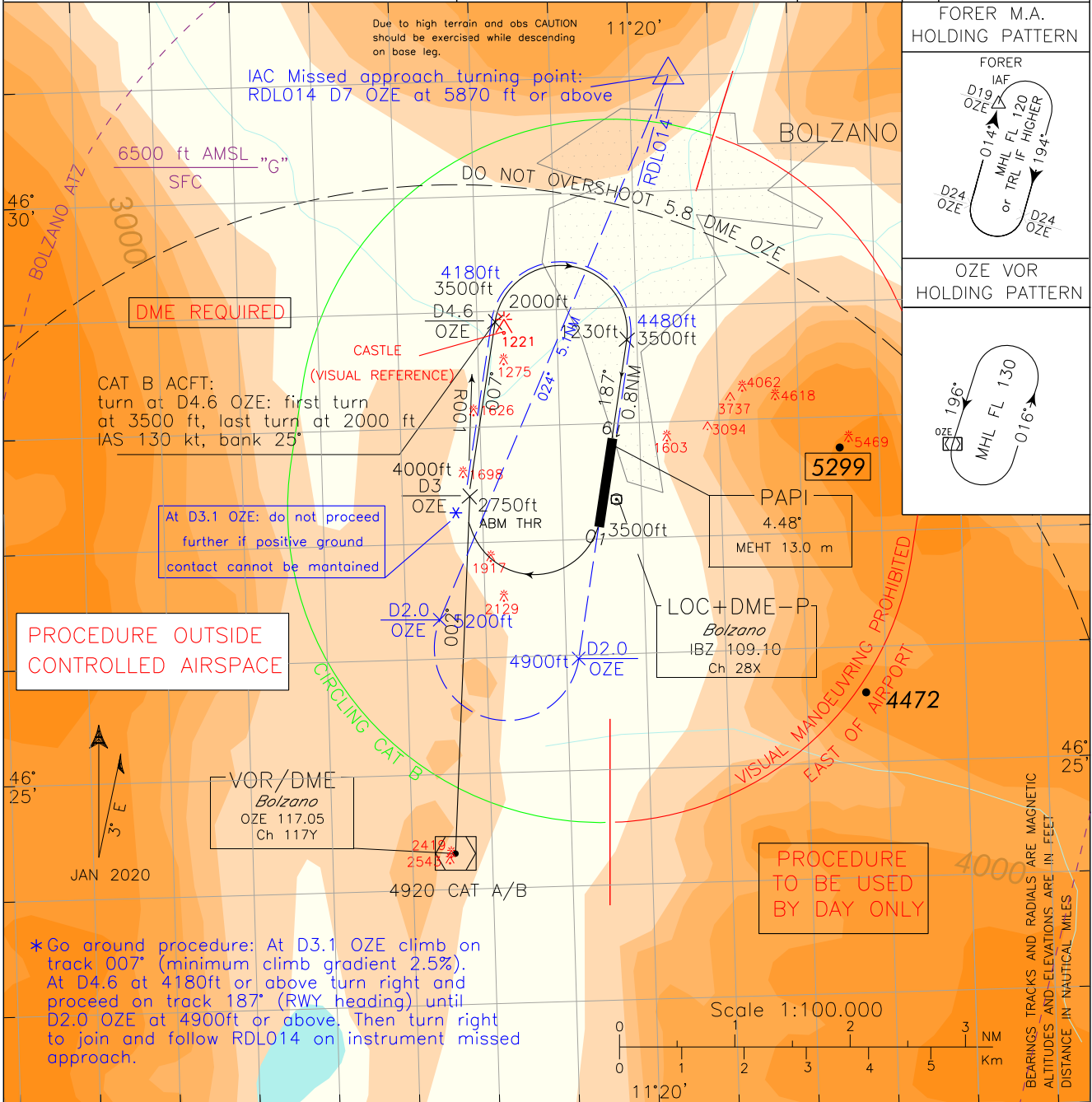
CHANGE: CLES ICAO CODE ADDED

TRANSITION ALT 10000  
 M.A.: Over OZE VOR/DME continue on track 014° (RDL 014 OZE VOR/DME). At D7 OZE DME at 5870 ft (5980 ft for Cat. C) turn left (IAS MAX 160 kt for acft Cat. C) to follow RDL346 (track 166°) for Cat. C or RDL349 (track 169°) for Cat. A/B inbound to OZE VOR. Then proceed on RDL194 OZE VOR/DME to FORER, to be reached at FL 120 or TRL if higher.



CIRCLING	VOR + DME	OCA (OCH)		CIRCLING ONLY WEST OF THE AERODROME (2) SEE VISUAL APPROACH CHART "CIRCLING ON PRESCRIBED TRACK"  (XX)TIMING NOT ALLOWED FOR DEFINING MAPt	FAF-MAPt (5 NM)			MNM SECT ALT VOR OZE
		A	B		FT PER MIN	GS	(XX) TIMING	
(2)		4920 (4133)	5050 (4263)		850	160	1:53	
		Vedere/See (2)	Non Consentito/Not Allowed. CAT C ACFT must proceed VFR after OZE VOR.		745	140	2:09	
					640	120	2:30	
					530	100	3:00	
					425	80	3:45	

VAC BOLZANO RWY 19 VISUAL MANOEUVRING (CIRCLING) ON PRESCRIBED TRACK TO RWY19 CAT A/B ACFT Following instrument approach VOR a	FIS <i>Padova Info</i>	124.150	AD Elev 787	L I P B	BOLZANO
	ACS <i>Padova Radar</i>	120.725			
	AFIS <i>Bolzano Aerodrome Info</i>	120.600			



CHANGE: INFORMATION UPDATE DUE TO NEW THR 01 AND THR 19 POSITION; AD ELEVATION AND MAGNETIC VARIATION UPDATED.

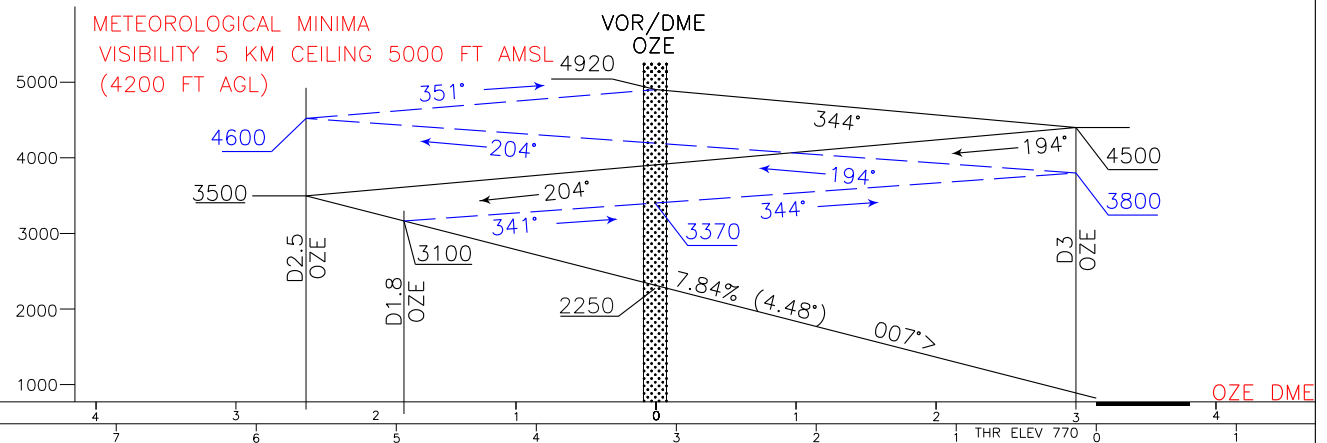
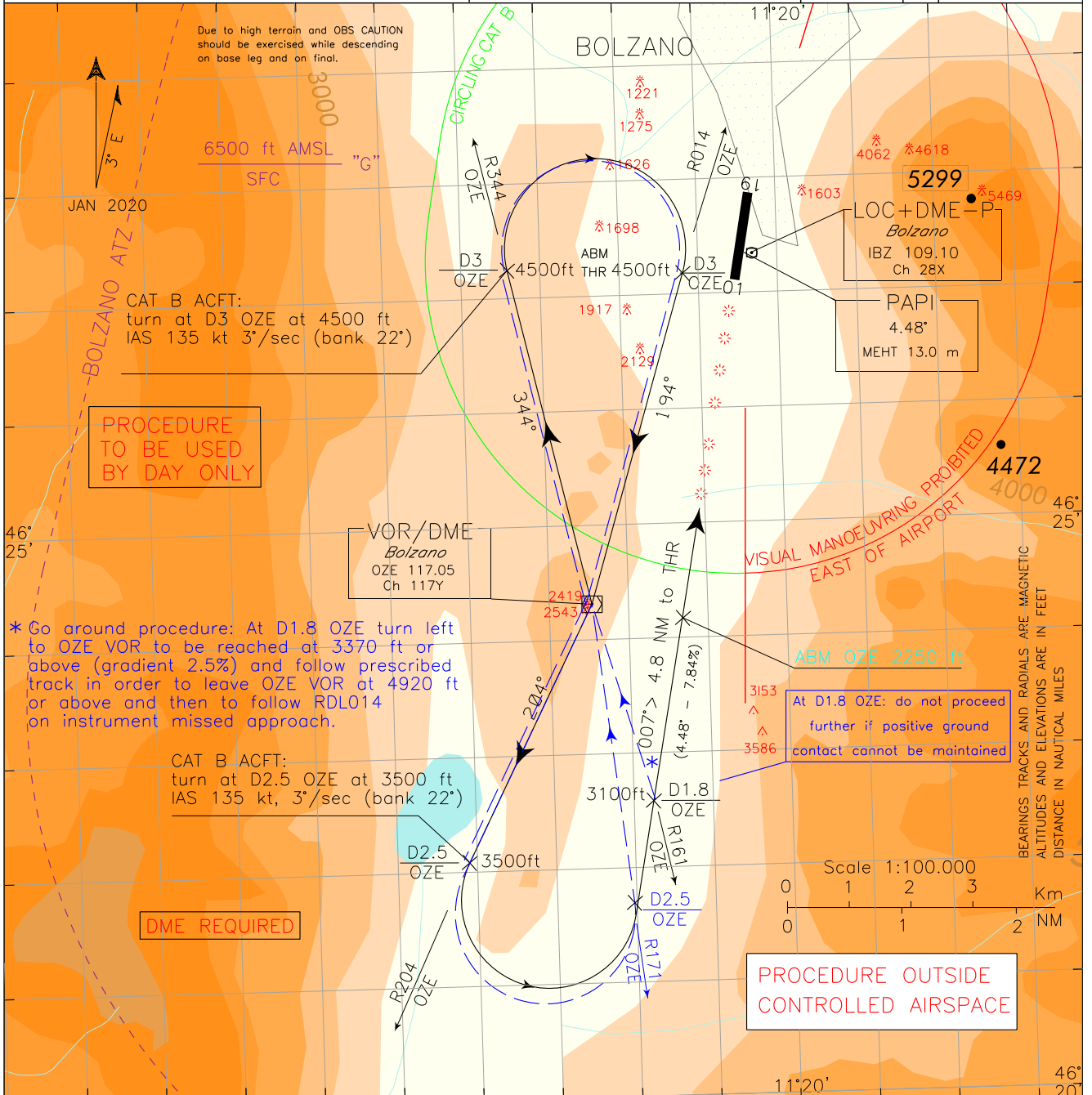
BEARINGS TRACKS AND RADIALS ARE MAGNETIC ALTITUDES AND ELEVATIONS ARE IN FEET DISTANCE IN NAUTICAL MILES

VAC BOLZANO RWY 01  
 VISUAL APPROACH PROCEDURE TO RWY01  
 CAT A/B ACFT (VISUAL MANOEUVRING ON  
 PRESCRIBED TRACK)  
 Following instrument approach VOR a

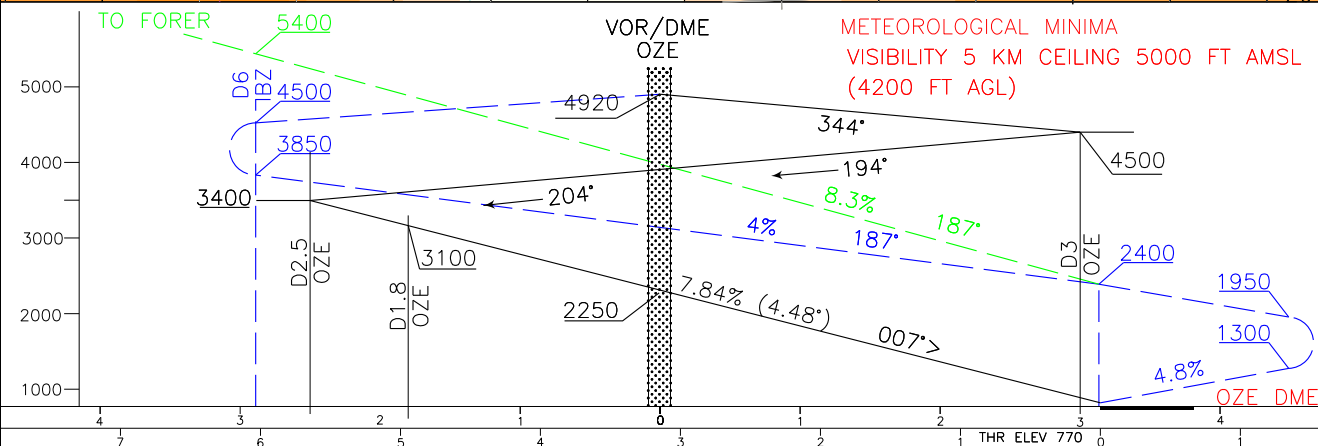
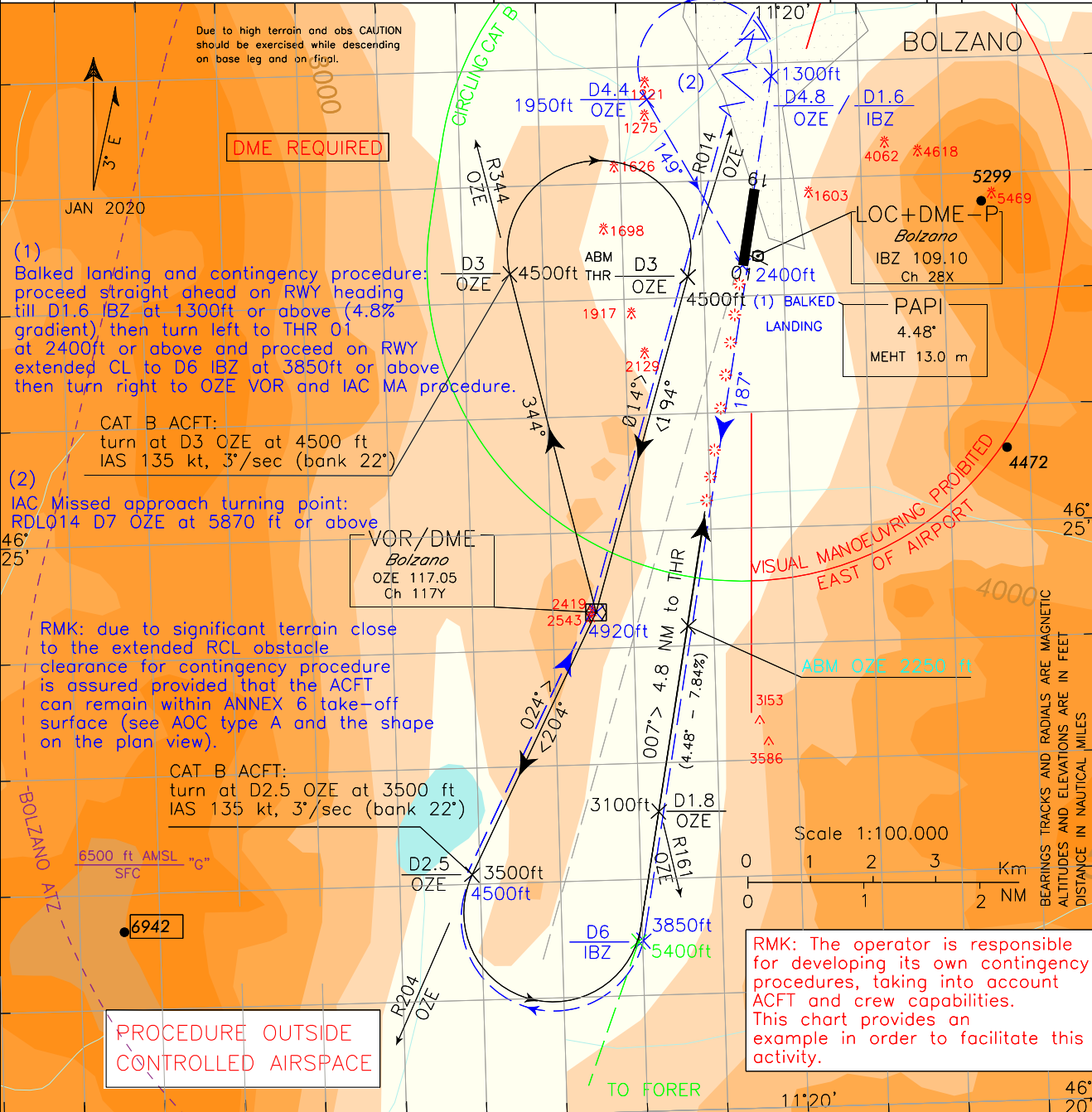
FIS <i>Padova Info</i>	124.150
ACS <i>Padova Radar</i>	120.725
AFIS <i>Bolzano Aerodrome Info</i>	120.600

AD ELEV	787	L I P B	BOLZANO

CHANGE: INFORMATION UPDATE DUE TO NEW THR 01 POSITION; AD ELEVATION AND MAGNETIC VARIATION UPDATED.



<b>BALKED LANDING PROCEDURE RWY 01</b> VISUAL APPROACH PROCEDURE TO RWY 01 CAT A/B ACFT (VISUAL MANOEUVRING ON PRESCRIBED TRACK) Following instrument approach VOR a and VAC RWY 01	FIS <i>Padova Info</i>	124.150	AD Elev 787	L I P B BOLZANO
	ACS <i>Padova Radar</i>	120.725		
	AFIS <i>Bolzano Aerodrome Info</i>	120.600		



CHANGE: INFORMATION UPDATE DUE TO NEW THR POSITION RWY 01; AD ELEVATION AND MAGNETIC VARIATION UPDATED.

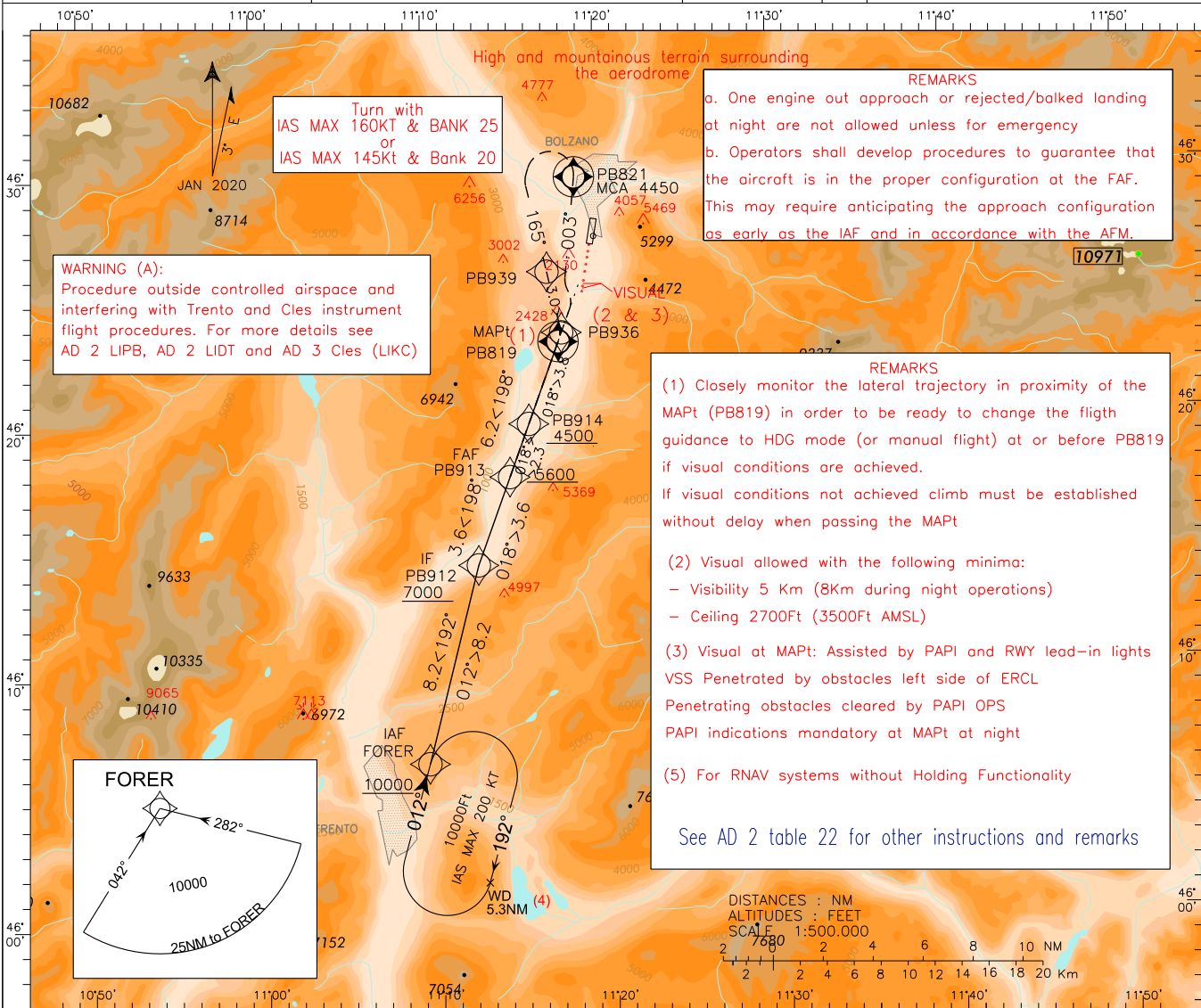
# ICAO - INSTRUMENT APPROACH CHART

AD 2 LIPB 5-13

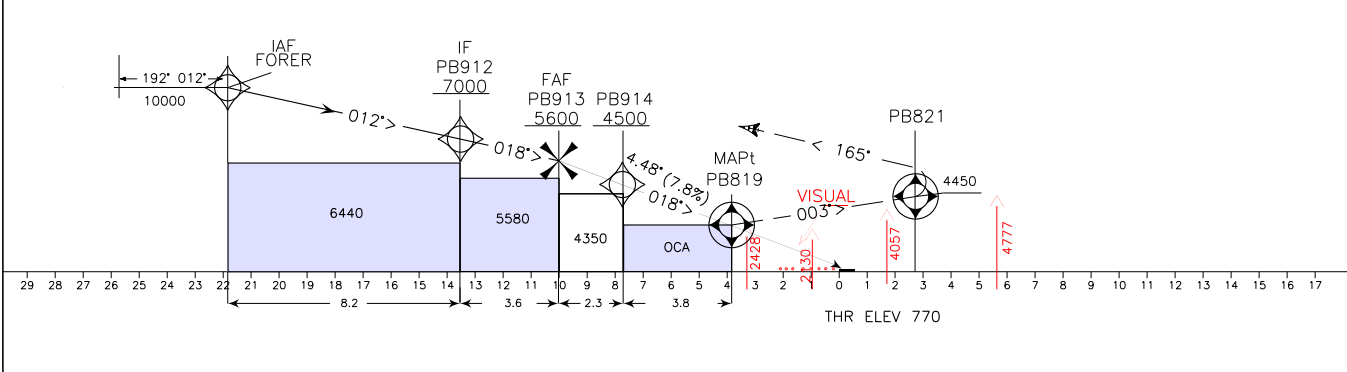
NON STANDARD ICAO

Final approach track offset 10.9' from RWY centreline. Final approach track intersects extended RWY centreline 1NM before THR01	FIS <i>Padova Info</i>	124.150	AD ELEV <b>787</b>	L I P B	<b>BOLZANO</b> RNP APCH INSTRUMENT GUIDED CLOUD BREAKING PROCEDURE RWY 01 CAT A/B/C/ ACFT
	ACS <i>Padova Radar</i>	120.725 125.900			
	AFIS <i>Bolzano Aerodrome Info</i>	120.600			

CHANGE: CLES ICAO CODE ADDED



**TRANSITION ALT 10000** Missed Approach: Proceed on track 003° climbing to 10000ft. Over PB821 turn left (IAS MAX 160kt/Bank Angle 25° or IAS MAX 145kt/Bank Angle 20°) on track 165° bound to PB939-PB936, then turn right (IAS MAX 160Kts Bank Angle 25°) to PB913 then PB912 - FORER  
(in case 5.2% climb gradient is complied with, maintain such gradient until passing 5000ft)



OCA (OCH)		A	B	C	MNM SECT ALT LIPB ARP
STRAIGHT IN APPROACH	LNAV	2750 (1980)			
		3650 (2880)			
CIRCLING		NOT ALLOWED (***)			
FT PER MIN	GS	Distance to MAPt	Altitude	FL 165 15000 ft	
1270	160	6	5550 (4780)		
1110	140	5	5074 (4304)		
950	120	4	4598 (4122)		
795	100	3	4122 (3646)		
635	80	2	3646 (2876)		
		1	3170 (2400)		

ENAV - Roma

AIRAC effective date 21 APR 2022 (A3/22)

Only specifically qualified crews with authorized type of ACFT are allowed to perform this procedure (see AD 2 LIPB Table 23)

## TABULAR DESCRIPTION

## RNP APCH RWY01 – (Instrument Guided Cloud Breaking Procedure)

Serial Number	Path Terminator	Waypoint Identifier	Fly Over	Course °M(°T)	Magnetic Variation	Distance (NM)	Turn Direction	Altitude (ft)	Speed Limit (kt)/Bank Angle	VPA/TCH	Navigation Specification
010	IF	FORER	-	-	-	-	-	+10000	200	-	RNP APCH
020	TF	PB912	-	012° (015.3°)	-	8.2	-	+7000	200	-	RNP APCH
030	TF	PB913	-	018° (021.1°)	-	3.6	-	+5600	180	-	RNP APCH
040	TF	PB914	-	018° (021.1°)	-	2.3	-	+4500	180	-	RNP APCH
050	TF	PB819	-	018°(021.1°)	-	3.8	-	OCA	180	-	RNP APCH
060	-	FTP01	-	018° (021.1°)	-	3.9	-	-	180	-4.48°/15M	RNP APCH
070	CF	PB821	Y	003° (006.6°)	+3.0	3.7	-	+4450	160/25 (*)	-	RNP APCH
080	CF	PB939	-	165° (168°)	+3.0	-	L	-	160/25	-	RNP APCH
090	TF	PB936	-	165° (168°)	-	3.0	-	-	160	-	RNP APCH
100	TF	PB913	-	198° (201°)	-	6.3	-	-	-	-	RNP APCH
110	TF	PB912	-	198° (201°)	-	3.6	-	-	180	-	RNP APCH
120	TF	FORER	-	192° (195.2°)	-	8.2	-	10000	200	-	RNP APCH

(\*) or 145Kt/20°

Path Terminator	Waypoint Identifier	Inbound Course °M (°T)	Leg Distance (NM) (1)	Waypoint Distance (NM) (2)	Turn Direction	Minimum Altitude (FT)	Maximum Altitude (FL)	Speed Limit (kt)	Magnetic Variation (°)	Navigation Specification
HM	FORER	012° (015°)	N.A.	5.3	R	10000	-	200	+3.0	RNAV1

(1) RNAV system with holding functionality

(2) RNAV system without holding functionality

## WAYPOINT LIST RNP RWY01

Waypoint Identifier	Coordinates
PB912	46°14'23.07"N – 011°12'36.32"E
PB913	46°17'43.62"N – 011°14'27.78"E
PB914	46°19'52.33"N – 011°15'39.44"E
PB819	46°23'25.92"N – 011°17'38.58"E
FTP01	46°27'03.12"N – 011°19'40.01"E
PB821	46°29'50.39"N – 011°18'42.99"E
PB939	46°26'33.40"N – 011°16'50.88"E
PB936	46°23'37.40"N – 011°17'44.99"E