

STAR

BOLZANO

TRANSITION ALT 10.000

WARNING (A):  
Procedures partially outside controlled airspace  
and interfering with Trento and Cles instrument  
flight procedures. For more details see  
AD 2 LIPB, AD 2 LIDT and AD 3 Cles (LIKC)

15<sup>2</sup>

12<sup>7</sup>

13<sup>3</sup>

VOR/DME  
Bolzano  
OZE 117.05  
Ch 117Y  
46°24'19"N  
011°17'32"E  
651m

- (1) IAS MAX 210 KT during turn
- (2) MEA 10000FT if proceeding to RNP instrument guided cloud breaking procedure RWY 01
- (3) Outside Controlled Airspace below FL120
- (4) For RNAV systems without Holding Functionality or TRL if higher
- (5) or TRL if higher

**LEGEND**

STAR

STAR ATC Discretion

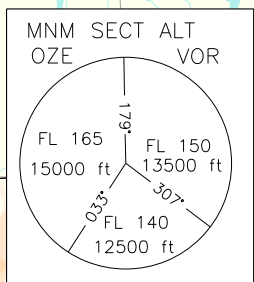
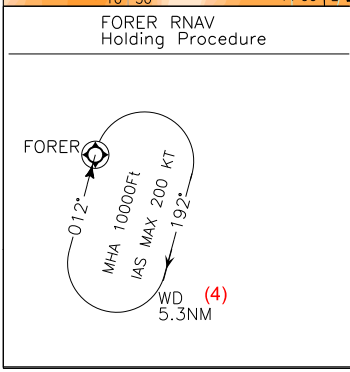
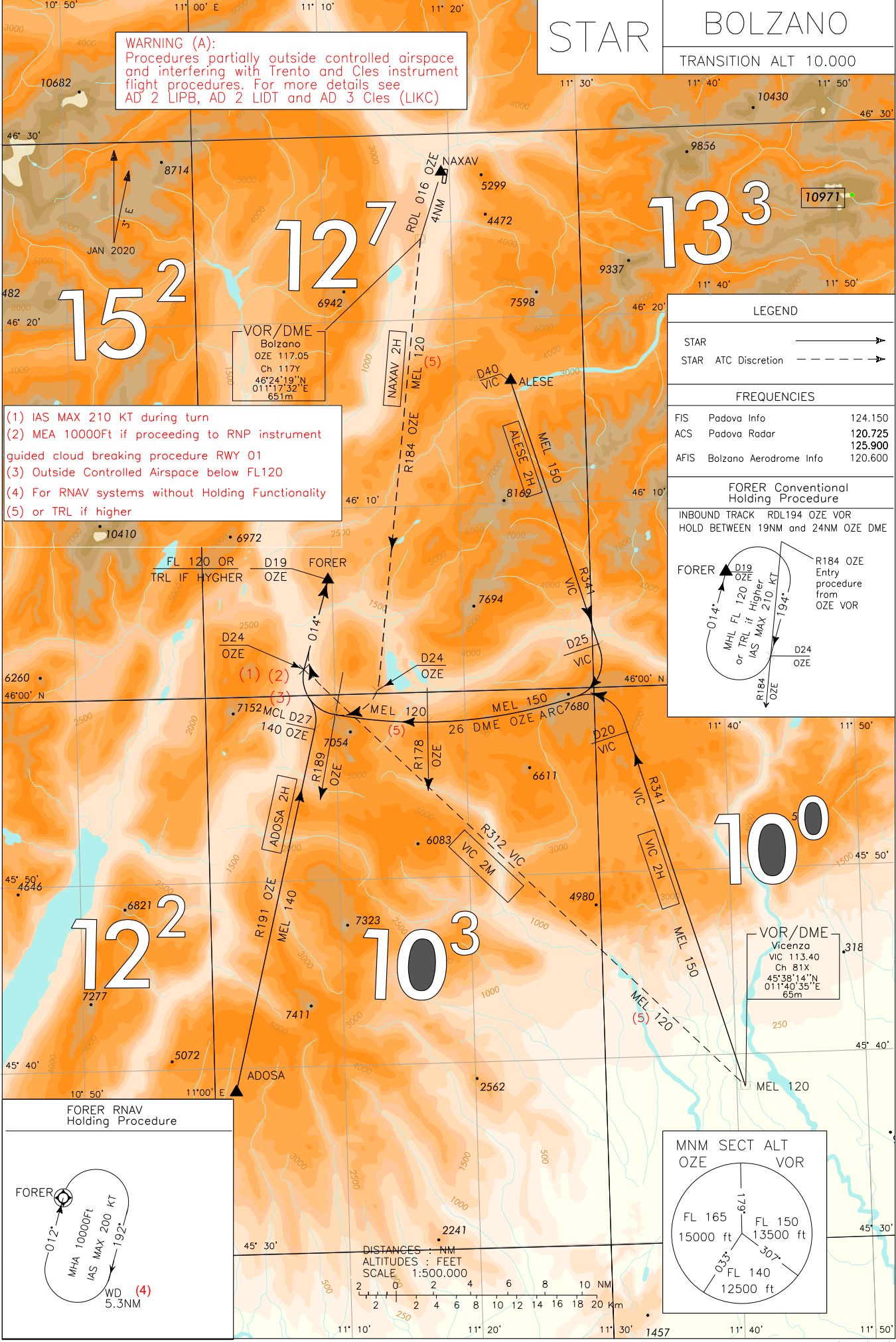
**FREQUENCIES**

FIS	Padova Info	124.150
ACS	Padova Radar	120.725
		125.900
AFIS	Bolzano Aerodrome Info	120.600

**FORER Conventional Holding Procedure**

INBOUND TRACK RDL194 OZE VOR  
HOLD BETWEEN 19NM and 24NM OZE DME

CHANGE: CLES ICAO CODE ADDED



**ALESE 2H**

ALESE – TR 161° (RDL 341 VIC VOR) until 25 NM VIC DME, then turn right until intercepting and following ARC 26 NM OZE DME. Intercepting RDL 189 OZE VOR turn right on TR 014° (RDL 194 OZE VOR) bound to FORER.

MEA/MEL: ALESE – INT ARC 26 NM OZE DME/RDL 178 OZE VOR: FL 150, INT ARC 26 NM OZE DME/RDL 178 OZE VOR – INT ARC 26 NM OZE DME/RDL 189 OZE VOR: FL 120, INT ARC 26 NM OZE DME/RDL 189 OZE VOR - FORER: (1)

**ADOSA 2H**

ADOSA – TR 011° (RDL191 OZE VOR) until 27 NM OZE DME then turn left until intercepting and following RDL 194 OZE VOR bound to FORER.

MEA/MEL: ADOSA – RDL 191/27NM OZE VOR/DME: FL 140, RDL 191/27NM OZE VOR/DME – FORER: (1)

**VIC 2H**

VIC VOR – TR 341° (RDL 341 VIC VOR) until 20 NM VIC DME, then turn left until intercepting and following ARC 26 NM OZE DME. Intercepting RDL 189 OZE VOR turn right on TR 014° (RDL 194 OZE VOR) bound to FORER.

MEA/MEL: VIC VOR – INT ARC 26 NM OZE DME/RDL 178 OZE VOR: FL 150, INT ARC 26 NM OZE DME/RDL 178 OZE VOR – INT ARC 26 NM OZE DME/RDL 189 OZE VOR: FL 120, INT ARC 26 NM OZE DME/RDL 189 OZE VOR - FORER: (1)

**NAXAV 2H (ATC discretion)**

NAXAV – OZE VOR/DME – TR 184° (RDL 184 OZE VOR) until 24 NM OZE DME, then turn right until intercepting and following TR 014° (RDL 194 OZE VOR) bound to FORER.

MEA/MEL: NAXAV – INT ARC 26 NM OZE DME/RDL 189 OZE VOR: FL 120, INT ARC 26 NM OZE DME/RDL 189 OZE VOR - FORER: (1)

**VIC 2M (ATC discretion)**

VIC VOR – TR 312° (RDL 312 VIC VOR) until intercepting RDL 189 OZE VOR, then turn right until intercepting and following RDL 194 OZE VOR bound to FORER.

MEA/MEL: VIC VOR – INT RDL 312 VIC/RDL 189 OZE VOR: FL 120 o/or TRL se più alto/if higher, INT RDL 312 VIC VOR/RDL189 OZE VOR - FORER: (1)

**(1) FL 120 or TRL if higher; 10000Ft if following RNP procedure**

Intenzionalmente bianca

*Intentionally left blank*