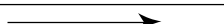

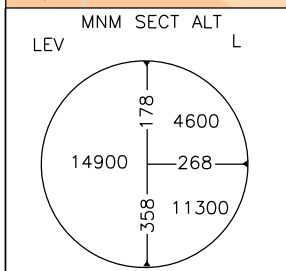
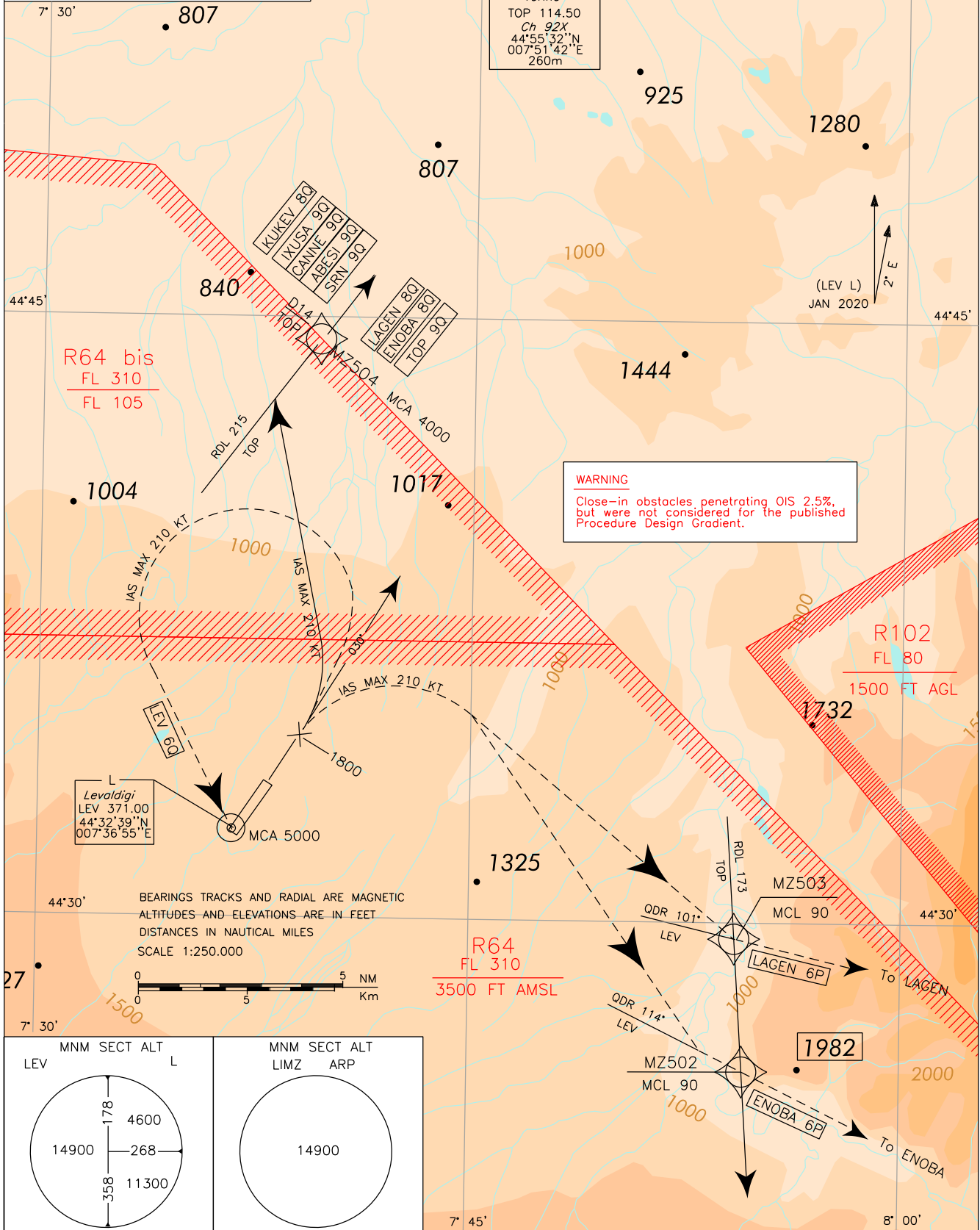


FREQUENCIES	
AFIS Cuneo Aerodrome Info	119.550
TWR Cuneo TWR	119.550
APP Torino APP/Radar	129.275 (121.100)
LEGEND	
	Initial climb
	Initial climb ATC discretion

INITIAL CLIMB  
PROCEDURE  
RWY 03

CUNEO/LEVALDIGI  
TRANSITION ALT 6000

CHANGE: WARNING CLOSE-IN OBSTACLES ADDED



**INITIAL CLIMB PROCEDURE RWY 03****WARNING**

There are close-in obstacles penetrating OIS 2.5%, but they were not considered for the published Procedure design gradient.

After take-off maintain RWY heading until passing 1800 ft, then:

- a. If cleared via ENOBA 8Q, LAGEN 8Q, TOP 9Q, KUKEV 8Q, IXUSA 9Q, CANNE 9Q, ABESI 9Q and SRN 9Q, turn left, with IAS MAX 210 kt, to intercept and follow RDL 215 TOP VOR for the assigned SID;
- b. If cleared via LEV 6Q turn left, with IAS MAX 210 kt, bound to LEV L.

Climb Gradient: 7% (425 ft/NM) until leaving 1800 ft;

- c. If cleared via ENOBA 6P, LAGEN 6P, turn right, with IAS MAX 210 kt, then follow the assigned SID.

Climb gradient: 7% (425 ft/NM) until leaving FL 90.

Intenzionalmente bianca

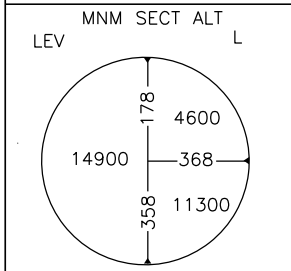
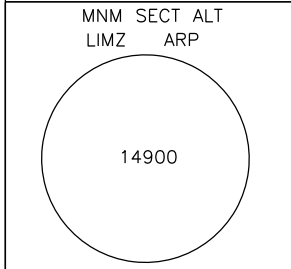
*Intentionally left blank*

FREQUENCIES	
AFIS Cuneo Aerodrome Info	119.550
TWR Cuneo TWR	119.550
APP Torino APP/Radar	129.275 (121.100)

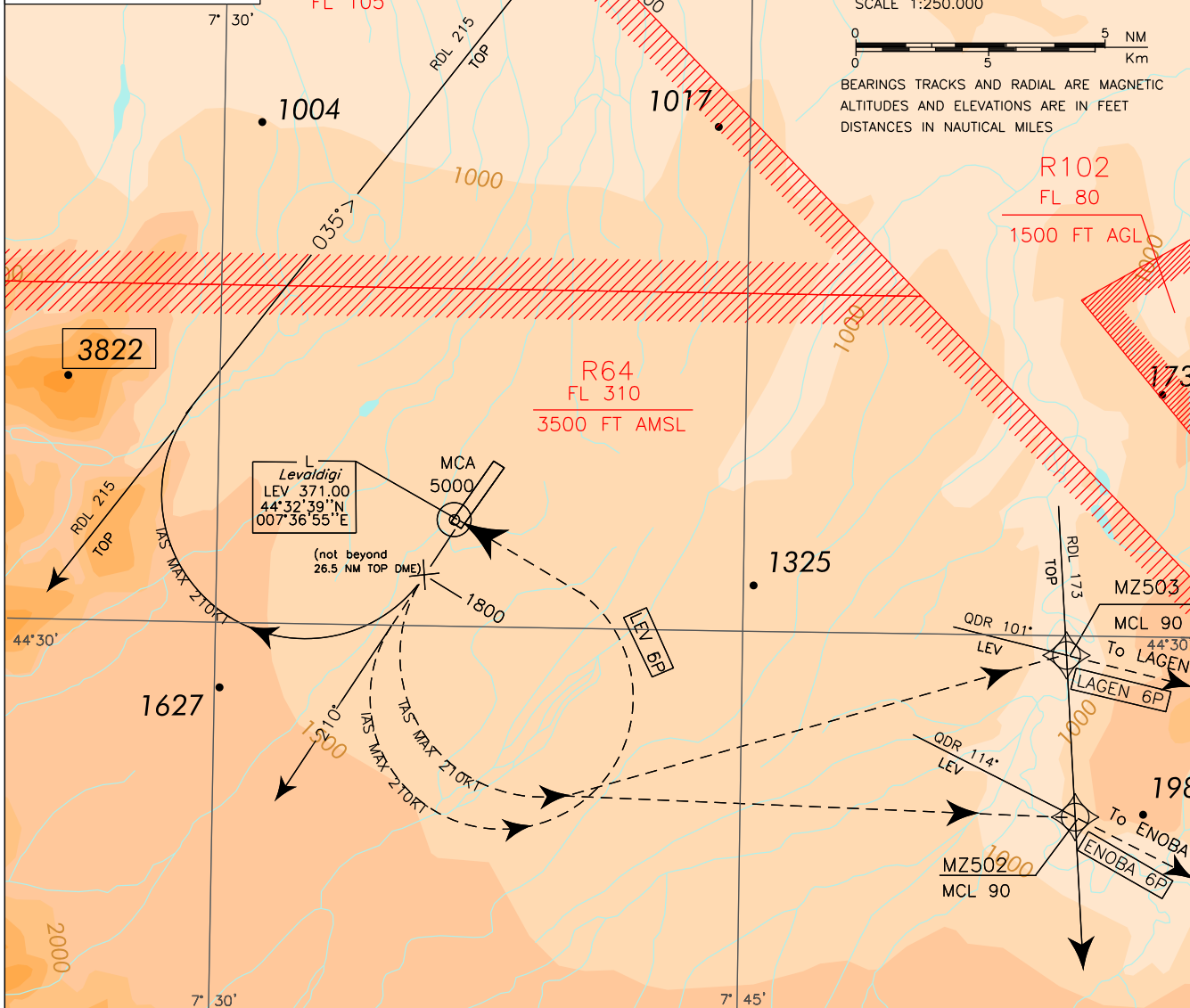
INITIAL CLIMB  
PROCEDURE  
RWY 21

CUNEO/LEVALDIGI
TRANSITION ALT 6000

LEGEND	
	Initial climb
	Initial climb ATC discretion



CHANGE: WARNING CLOSE-IN OBSTACLES ADDED



---

**INITIAL CLIMB PROCEDURE RWY 21****WARNING**

**There are close-in obstacles penetrating OIS 2.5%, but they were not considered for the published Procedure design gradient.**

After take-off maintain RWY heading until passing 1800 ft (not beyond 26.5 NM TOP DME) then:

- a. If cleared via ENOBA 8Q, LAGEN 8Q, TOP 9Q, KUKEV 8Q, IXUSA 9Q, CANNE 9Q, ABESI 9Q and SRN 9Q turn right, with IAS MAX 210 kt, to intercept and follow RDL 215 TOP VOR for the assigned SID.

Climb Gradient: 7% (425 ft/NM) until leaving 4000 ft

- b. If cleared via ENOBA 6P, LAGEN 6P or LEV 6P, turn left, with IAS MAX 210 kt, then follow the assigned SID.

Climb gradient 7% (425 ft/NM):

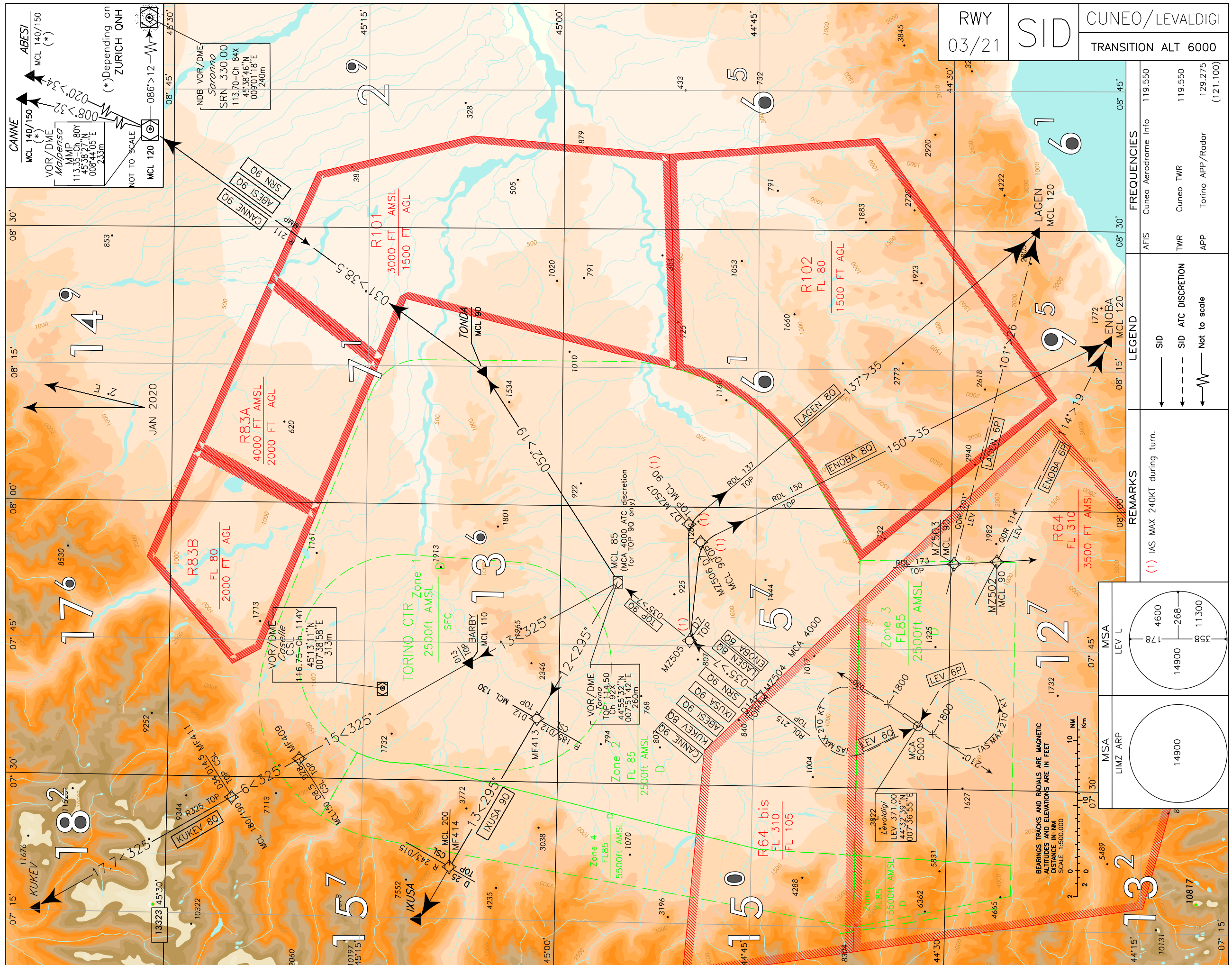
- for SID ENOBA 6P and LAGEN 6P until leaving FL 90;
- for SID LEV 6P until leaving 1800 ft.

Intenzionalmente bianca

*Intentionally left blank*



CHANGE: GEO ATS UPDATED



RWY 03/21	SID	CUNEO/LEVALDIGI
		TRANSITION ALT 6000

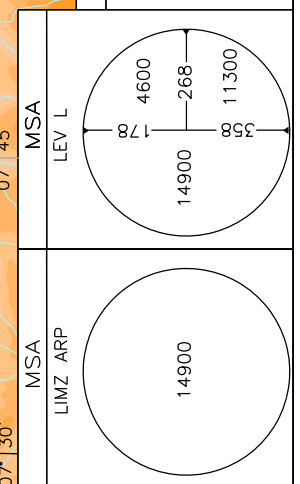
FREQUENCIES	
AFIS Cuneo Aerodrome Info	119.550
Cuneo TWR	119.550
Torino APP/Radar	129.275 (121.100)

LEGEND	
—	SID
- - -	SID ATC DISCRETION
~	Not to scale

REMARKS	
(1)	IAS MAX 240KT during turn.



**SIDs DESCRIPTION**

Initial Climb Procedure executed:

**REMARKS**

- (1) Depending on Geneva QNH
- (2) Depending on Zurich QNH

**ABESI 9Q**

Proceed on RDL 215 TOP VOR (TR 035°) bound to TOP VOR/DME, then proceed via TOP VOR– TONDA – MMP VOR – ABESI.

MCL: INT RDL 215/14NM TOP VOR/DME: 4000 FT; TOP VOR/DME: FL 85; TONDA: FL90; MMP VOR: FL 120;  
ABESI: FL 140/150 depending on Zurich QNH.

Path Terminator	Waypoint Identifier	Fly Over	Course °M (°T)	Magnetic Variation	Distance (NM)	Turn Direction	Altitude (ft)	Speed Limit (kt)	Navigation Performance
IF	MZ504	-	-	-	-	-	+4000	-	Conventional/ RNAV1
TF	TOP	-	035 (037.5)	-	14.0	-	+FL 85	-	Conventional/ RNAV1
TF	TONDA	-	052 (054.7)	-	19.2	-	+FL 90	-	Conventional/ RNAV1
TF	MMP	-	031 (033.5)	-	38.5	-	+FL 120	-	Conventional/ RNAV1
TF	ABESI	-	020 (022.1)	-	33.7	-	+FL 140/ FL 150 (2)	-	Conventional/ RNAV1

**CANNE 9Q**

Proceed on RDL 215 TOP VOR (TR 035°) bound to TOP VOR/DME, then proceed via TOP VOR/DME – TONDA – MMP VOR – CANNE.

MCL: INT RDL 215/14NM TOP VOR/DME: 4000 FT; TOP VOR/DME: FL 85; TONDA: FL 90; MMP VOR: FL 120;  
CANNE: FL 140/150 depending on Zurich QNH.

Path Terminator	Waypoint Identifier	Fly Over	Course °M (°T)	Magnetic Variation	Distance (NM)	Turn Direction	Altitude (ft)	Speed Limit (kt)	Navigation Performance
IF	MZ504	-	-	-	-	-	+4000	-	Conventional/ RNAV1
TF	TOP	-	035 (037.5)	-	14.0	-	+FL 85	-	Conventional/ RNAV1
TF	TONDA	-	052 (054.7)	-	19.2	-	+FL 90	-	Conventional/ RNAV1
TF	MMP	-	031 (033.5)	-	38.5	-	+FL 120	-	Conventional/ RNAV1
TF	CANNE	-	008 (010.7)	-	32.1	-	+FL 140/ FL 150 (2)	-	Conventional/ RNAV1



**ENOPA 6P (ATC Discretion)**

Intercept and follow QDR 114° LEV L (TR 114°) bound to ENOPA.

MCL: INT QDR 114° LEV L/RDL 173 TOP VOR FL 90; ENOPA: FL 120

Path Terminator	Waypoint Identifier	Fly Over	Course °M (°T)	Magnetic Variation	Distance (NM)	Turn Direction	Altitude (ft)	Speed Limit (kt)	Navigation Performance
IF	MZ502	-	-	-	-	-	+FL90	-	Conventional/ RNAV1
TF	ENOPA	-	114 (116.2)	-	18.8	-	+FL120	-	Conventional/ RNAV1

**ENOPA 8Q**

Proceed on RDL 215 TOP VOR (TR 035°) until 7NM TOP DME, then turn right on TR 093°, with IAS MAX 240 kt, to intercept and follow RDL 150 TOP VOR (TR 150°) bound to ENOPA.

MCA/MCL: INT RDL 215/14NM TOP VOR/DME: 4000 FT; INT RDL 150/7NM TOP VOR/DME: FL 90; ENOPA: FL 120

Path Terminator	Waypoint Identifier	Fly Over	Course °M (°T)	Magnetic Variation	Distance (NM)	Turn Direction	Altitude (ft)	Speed Limit (kt)	Navigation Performance
IF	MZ504	-	-	-	-	-	+4000	-	Conventional/ RNAV1
TF	MZ505	-	035 (037.5)	-	7.0	R	-	240	Conventional/ RNAV1
TF	MZ506	-	093 (095.1)	-	7.5	R	+FL 90	240	Conventional/ RNAV1
TF	ENOPA	-	150 (153.0)	-	35.1	-	+FL 120	-	Conventional/ RNAV1

**IXUSA 9Q**

Proceed on RDL 215 TOP VOR (TR 035°) bound to TOP VOR/DME, then proceed via TOP VOR/DME– IXUSA.

MCL: INT RDL 215/14NM TOP VOR/DME: 4000 FT; TOP VOR/DME: FL 85;  
INT RDL 295/12NM TOP VOR/DME or INT RDL 185/12NM CSL VOR/DME: FL 130;  
INT RDL 295/25NM TOP VOR/DME or INT RDL 243/15NM CSL VOR/DME: FL 200.

Path Terminator	Waypoint Identifier	Fly Over	Course °M (°T)	Magnetic Variation	Distance (NM)	Turn Direction	Altitude (ft)	Speed Limit (kt)	Navigation Performance
IF	MZ504	-	-	-	-	-	+4000	-	Conventional/ RNAV1
TF	TOP	-	035 (037.5)	-	14.0	-	+FL 85	-	Conventional/ RNAV1
TF	MF413	-	295 (297.8)	-	12.0	L	+FL 130	-	Conventional/ RNAV1
TF	MF414	-	295 (297.8)	-	13.0	-	+FL 200	-	Conventional/ RNAV1
TF	IXUSA	-	295 (297.8)	-	5.0	-	-	-	Conventional/ RNAV1

**KUKEV 8Q**

Proceed on RDL 215 TOP VOR (TR 035°) bound to TOP VOR/DME, then proceed via TOP VOR/DME – BARBY – KUKEV.

MCA/MCL: INT RDL 215/14NM TOP VOR/DME: 4000 FT; TOP VOR/DME: FL 85; BARBY: FL110;

INT RDL 325/28NM TOP VOR/DME or INT RDL 325 TOP VOR/8.5NM CSL DME: FL150;

INT RDL 325/34NM TOP VOR/DME or INT RDL 325 TOP VOR/14.5NM CSL DME: FL180/190 depending on Geneve QNH.

Path Terminator	Waypoint Identifier	Fly Over	Course °M (°T)	Magnetic Variation	Distance (NM)	Turn Direction	Altitude (ft)	Speed Limit (kt)	Navigation Performance
IF	MZ504	-	-	-	-	-	+4000	-	Conventional/ RNAV1
TF	TOP	-	035 (037.5)	-	14.0	-	+FL 85	-	Conventional/ RNAV1
TF	BARBY	-	325 (327.6)	-	13.0	-	+FL 110	-	Conventional/ RNAV1
TF	MF409	-	325 (327.6)	-	15.1	-	+FL 150	-	Conventional/ RNAV1
TF	MF411	-	325 (327.6)	-	6.0	-	+FL 180/ FL 190 (1)	-	Conventional/ RNAV1
TF	KUKEV	-	325 (327.6)	-	17.7	-	-	-	Conventional/ RNAV1

**LAGEN 6P (ATC discretion)**

Intercept and follow QDR 101° LEV L (TR 101°) bound to LAGEN.

MCL: INT QDR 101° LEV L/ RDL 173 TOP VOR: FL90; LAGEN: FL 120

Path Terminator	Waypoint Identifier	Fly Over	Course °M (°T)	Magnetic Variation	Distance (NM)	Turn Direction	Altitude Constraint	Speed Limit	Navigation Performance
IF	MZ503	-	-	-	-	-	+FL90	-	Conventional/ RNAV1
TF	LAGEN	-	101 (103.2)	-	26.3	-	+FL120	-	Conventional/ RNAV1

**LAGEN 8Q**

Proceed on RDL 215 TOP VOR (TR 035°) until 7NM TOP DME, then turn right on TR 086°, with IAS MAX 240 kt, to intercept and follow RDL 137 TOP VOR (TR 137°) bound to LAGEN.

MCA/MCL: INT RDL 215/14 NM TOP VOR/DME: 4000 FT; INT RDL 137/7NM TOP VOR/DME: FL 90; LAGEN: FL 120

Path Terminator	Waypoint Identifier	Fly Over	Course °M (°T)	Magnetic Variation	Distance (NM)	Turn Direction	Altitude (ft)	Speed Limit (kt)	Navigation Performance
IF	MZ504	-	-	-	-	-	+4000	-	Conventional/ RNAV1
TF	MZ505	-	035 (037.5)	-	7.0	R	-	240	Conventional/ RNAV1
TF	MZ507	-	086 (088.1)	-	8.9	R	+FL 90	240	Conventional/ RNAV1
TF	LAGEN	-	137 (139.4)	-	35.0	-	+FL 120	-	Conventional/ RNAV1

**LEV 6P (ATC discretion)**

Proceed bound to LEV L.

MCA: LEV L: 5000 FT

**LEV 6Q (ATC discretion)**

Proceed bound to LEV L.

MCA: LEV L: 5000 FT

**SRN 9Q**

Proceed on RDL 215 TOP VOR (TR 035°) bound to TOP VOR/DME, then proceed via TOP VOR/DME – TONDA – MMP VOR – SRN VOR.

MCL: INT RDL 215/14NM TOP VOR/DME: 4000 FT; TOP VOR/DME: FL 85; TONDA: FL90; MMP VOR: FL 120.

Path Terminator	Waypoint Identifier	Fly Over	Course °M (°T)	Magnetic Variation	Distance (NM)	Turn Direction	Altitude (ft)	Speed Limit (kt)	Navigation Performance
IF	MZ504	-	-	-	-	-	+4000	-	Conventional/ RNAV1
TF	TOP	-	035 (037.5)	-	14.0	-	+FL 85	-	Conventional/ RNAV1
TF	TONDA	-	052 (054.7)	-	19.2	-	+FL 90	-	Conventional/ RNAV1
TF	MMP	-	031 (033.5)	-	38.5	-	+FL 120	-	Conventional/ RNAV1
TF	SRN	-	086 (088.2)	-	12.1	-	-	-	Conventional/ RNAV1

**TOP 9Q**

Proceed on RDL 215 TOP VOR (TR 035°) bound to TOP VOR/DME.

MCA/MCL: INT RDL 215/14NM TOP VOR/DME): 4000 FT; TOP VOR/DME: FL 85 (4000 FT ATC discretion)

**WAYPOINT LIST**

Waypoint Identifier	Coordinates
MF409	45°19'18.05" N 007°30'29.01" E
MF411	45°24'21.90" N 007°25'55.08" E
MF413	45°01'07.18" N 007°36'44.46" E
MF414	45°07'08.62" N 007°20'28.92" E
MZ502	44°26'20.60" N 007°54'55.12" E
MZ503	44°29'45.89" N 007°54'12.58" E
MZ504	44°44'26.05" N 007°39'41.62" E
MZ505	44°49'58.92" N 007°45'41.21" E
MZ506	44°49'18.25" N 007°56'12.80" E
MZ507	44°50'15.87" N 007°58'11.69" E