

FREQUENCIES	
APP Torino APP/Radar	129.275 (121.100)
TWR Cuneo TWR	119.550
AFIS Cuneo Aerodrome Info	119.550

AIRSPACE CLASSIFICATION SEE AIP ENR 1.4	
STAR	→
STAR ATC DISCRETION	- - - - -
LINK ROUTE	→
Not to scale	→

LINK ROUTES & STAR	
--------------------	--

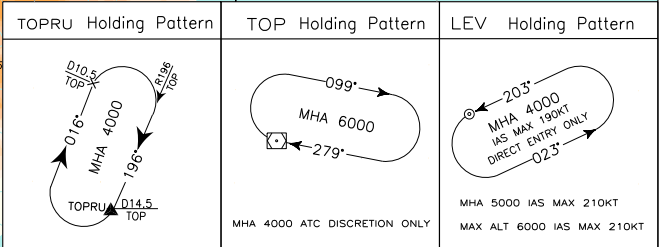
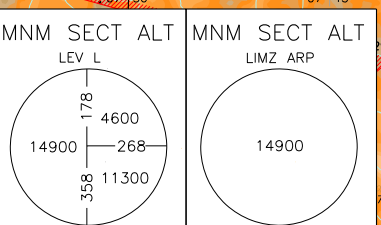
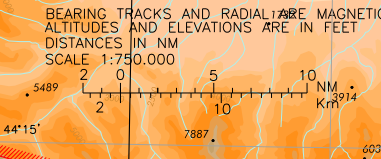
CUNEO/LEVALDIGI	
TRANSITION ALT 6000	

REMARK:
(1) RNAV1 STAR usable only when radar service available

NOT TO SCALE
NDB VOR/DME Saronno
SRN 330.00
113.70 - Ch 84X
45°38'46"N
009°01'18"E
240m

(4) From LUSIL R060 SRN TRACK 240° DIST 51.7NM MEL 140

CHANGE: LEV L HOLDING PATTERN AND GEO AITS UPDATED



CUNEO / LEVALDIGI**LINK ROUTES****AKASU 3U**

AKASU proceed on TR 185° to NELAB (INT RDL 026/48 NM TOP VOR/DME), then proceed on TR 206° (RDL 026 TOP VOR) via MF505 (INT RDL 082/19 NM CSL VOR/DME) direct to TOP VOR/DME.

MEL/MEA: AKASU – NELAB: FL 150; NELAB – MF505: FL 90; MF505 – TOP VOR/DME: 6000 FT

Path Terminator	Waypoint Identifier	Fly Over	Course °M (°T)	Magnetic Variation	Distance (NM)	Turn Direction	Altitude (ft)	Speed Limit (kt)	Navigation Performance
IF	AKASU	-	-			-	-	(1)	RNAV1
TF	NELAB	-	185 (187.2)	-	29.1	-	+FL 150	(1)	Conventional / RNAV1
TF	MF505	-	206 (208.7)	-	26.1	-	+FL 90	(1)	Conventional/ RNAV1
TF	TOP	-	206 (208.7)	-	22.0	R	+6000	(1)	Conventional/ RNAV1

GEN 4U

GEN VOR/DME – ASTOR – TOP VOR/DME

MEL/MEA: GEN VOR/DME – ASTOR: FL 90; ASTOR – TOP VOR/DME: 6000FT

Path Terminator	Waypoint Identifier	Fly Over	Course °M (°T)	Magnetic Variation	Distance (NM)	Turn Direction	Altitude (ft)	Speed Limit (kt)	Navigation Performance
IF	GEN	-	-			-	-	(1)	Conventional/RNAV1
TF	ASTOR	-	298 (300.0)	-	48.7	-	+FL 90	(1)	Conventional/RNAV1
TF	TOP	-	298 (300.0)	-	11.5	-	+6000	(1)	Conventional/RNAV1

KUMIN 3U

KUMIN – LADUS – TOP VOR/DME

MEL/MEA: KUMIN – LADUS: FL 130; LADUS – TOP VOR/DME : 6000FT

Path Terminator	Waypoint Identifier	Fly Over	Course °M (°T)	Magnetic Variation	Distance (NM)	Turn Direction	Altitude (ft)	Speed Limit (kt)	Navigation Performance
IF	KUMIN	-	-			-	-	(1)	Conventional/RNAV1
TF	LADUS	-	094 (096.3)	-	10.0	-	+FL 130	(1)	Conventional/RNAV1
TF	TOP	-	094 (096.3)	-	12.0	-	+6000	(1)	Conventional/RNAV1

LUSIL 4U

LUSIL – SRN VOR/DME – NELAB – MF505 – TOP VOR/DME

MEL/MEA: LUSIL – SRN VOR/DME: FL 140; SRN VOR/DME – NELAB: FL130; NELAB – MF505: FL90;
MF505 - TOP VOR/DME : 6000 FT

Path Terminator	Waypoint Identifier	Fly Over	Course °M (°T)	Magnetic Variation	Distance (NM)	Turn Direction	Altitude (ft)	Speed Limit (kt)	Navigation Performance
IF	LUSIL	-	-			-	-	(1)	Conventional/RNAV1
TF	SRN	Y	240 (242.4)	-	51.7	R	+FL 140	(1)	Conventional/RNAV1
TF	NELAB	-	265 (267.6)	-	25.9	L	+FL 130	(1)	Conventional/RNAV1
TF	MF505	-	206 (208.7)	-	26.1	-	+FL 90	(1)	Conventional/RNAV1
TF	TOP	-	206 (208.7)	-	22.0	-	+6000	(1)	Conventional/RNAV1

SRN 4U

SRN VOR/DME – NELAB – MF505 – TOP VOR/DME

MEL/MEA: SRN VOR/DME– NELAB: FL 130; NELAB – MF505: FL 90; MF505 – TOP VOR/DME: 6000FT

Path Terminator	Waypoint Identifier	Fly Over	Course °M (°T)	Magnetic Variation	Distance (NM)	Turn Direction	Altitude (ft)	Speed Limit (kt)	Navigation Performance
IF	SRN	-	-			-	-	(1)	Conventional/RNAV1
TF	NELAB	-	265 (267.6)	-	25.9	L	+FL 130	(1)	Conventional/RNAV1
TF	MF505	-	206 (208.7)	-	26.1	-	+FL 90	(1)	Conventional/RNAV1
TF	TOP	-	206 (208.7)	-	22.0	-	+6000	(1)	Conventional/RNAV1

VEROB 4U

VEROB - OKOMU – TOP VOR/DME

MEL/MEA: VEROB – OKOMU: FL 130; OKOMU – TOP VOR/DME: 6000FT

Path Terminator	Waypoint Identifier	Fly Over	Course °M (°T)	Magnetic Variation	Distance (NM)	Turn Direction	Altitude (ft)	Speed Limit (kt)	Navigation Performance
IF	VEROB	-	-			-	-	(1)	Conventional/RNAV1
TF	OKOMU	-	135 (137.7)	-	14.9	-	+FL 130	(1)	Conventional/RNAV1
TF	TOP	-	135 (137.7)	-	15.0	-	+6000	(1)	Conventional/RNAV1

(1) See ENR 2.1.1.1

HOLDING CONVENTIONAL

Path Terminator	Waypoint Identifier	Fly Over	Course °M (°T)	Turn Direction	Altitude Constraint	Speed Limit	Recommended Navaid	Bearing/Range to Navaid	Navigation Performance
HM	TOP	-	279 (281.0)	R	6000 ft*	-	TOP VOR/DME	-	Conventional

*MHA 4000FT ATC Discretion only

WAYPOINT LIST

Waypoint Identifier	Coordinates
MF505	45°14'50.87" N 008°06'33.52" E

STAR**ABN 1T (2)**

From ABN NDB proceed via RDL 161 TOP VOR until MZ411 (RDL 161/7.2 TOP VOR/DME), the turn left to intercept and follow RDL 196 TOP VOR direct to TOPRU.

MEL/MEA: ABN – RDL 161/25NM TOP VOR/DME (MZ408): FL130;
 RDL 161/25NM TOP VOR/DME (MZ408) – RDL 161/16NM TOP VOR/DME (MZ 407): FL 90;
 RDL 161/16NM TOP VOR/DME (MZ407) – RDL 196/7.4NM TOP VOR/DME (MZ 412): 6000FT;
 RDL 196/7.4NM TOP VOR/DME (MZ 412) – TOPRU: 4000FT

Coding for RNAV1 equipped A/C

Path Terminator	Waypoint Identifier	Fly Over	Course °M (°T)	Magnetic Variation	Distance (NM)	Turn Direction	Altitude (ft)	Speed Limit (kt)	Navigation Performance
IF	ABN	-	-	-		-	-	-	Conventional/ RNAV1
TF	MZ408	-	341 (343.5)	-	26.4	-	FL130	-	Conventional/ RNAV1
TF	MZ407	-	341 (343.5)	-	12.0	L	FL90	-	Conventional/ RNAV1
TF	MZ411	-	341 (343.5)	-	8.8	-	6000	200	Conventional/ RNAV1
TF	MZ412	-	266 (268.4)	-	4.4	-	6000	200	Conventional/ RNAV1
TF	TOPRU	-	196 (198.0)	-	7.0	-	4000	-	Conventional/ RNAV1

(2) RNAV1 STAR usable only when radar service available

ENOBA 2B (ATC discretion)

ENOBA – MZ402 – MZ403 – LEV L

MEL/MEA: ENOBA – MZ402: FL 90; MZ402 – MZ403: 6000FT; MZ403 – LEV L: 5000FT

Path Terminator	Waypoint Identifier	Fly Over	Course °M (°T)	Magnetic Variation	Distance (NM)	Turn Direction	Altitude (ft)	Speed Limit (kt)	Navigation Performance
IF	ENOBA	-	-	-		-	-	(1)	Conventional
TF	MZ402	-	294 (296.4)	-	18.8	-	FL 90	(1)	Conventional
TF	MZ403	-	294 (296.4)	-	8.0	-	6000	(1)	Conventional
TF	LEV	-	294 (296.4)	-	6.4	L	5000	(1)	Conventional

(1) See ENR 2.1.1.1

LAGEN 2D (2)

Path Terminator	Waypoint Identifier	Fly Over	Course °M (°T)	Magnetic Variation	Distance (NM)	Turn Direction	Altitude (ft)	Speed Limit (kt)	Navigation Performance
IF	LAGEN	-	-	-		-	-	-	RNAV1
TF	NEDED	-	317 (319.5)	-	23.6	-	FL100	-	RNAV1
TF	MZ404	-	310 (312.1)	-	14.1	L	6000	-	RNAV1
TF	MZ412	-	233 (235.8)	-	4.6	-	6000	-	RNAV1
TF	TOPRU	-	196 (198.0)	-	7.0	-	4000	-	RNAV1

(2) RNAV1 STAR usable only when radar service available

TOP 1B (ATC discretion)

TOP VOR/DME – MZ401 – LEV L

MEL/MEA: TOP VOR/DME – MZ401: 4000FT (MZ401 to be crossed between 6000 FT and 4000FT); MZ401 – LEV L: 4000FT

Path Terminator	Waypoint Identifier	Fly Over	Course °M (°T)	Magnetic Variation	Distance (NM)	Turn Direction	Altitude (ft)	Speed Limit (kt)	Navigation Performance
IF	TOP	-	-	-	-	-	-	(1)	Conventional
TF	MZ401	-	202 (204.7)	-	8.1	-	4000 (*)	(1)	Conventional
TF	LEV	-	202 (204.7)	-	17.0	L	4000	(1)	Conventional

(1) See ENR 2.1.1.1

(*) MZ401 to be crossed between 6000FT and 4000FT

TOP 3D

From TOP VOR/DME intercept and follow RDL 197 TOP VOR (TR 197°) bound to TOPRU.

MEL/MEA: TOP VOR/DME – TOPRU 4000FT (MZ413 to be crossed between 6000 FT and 4000 FT).

Coding for RNAV1 equipped A/C

Path Terminator	Waypoint Identifier	Fly Over	Course °M (°T)	Magnetic Variation	Distance (NM)	Turn Direction	Altitude (ft)	Speed Limit (kt)	Navigation Performance
IF	TOP	-	-	-		-	-	(1)	Conventional/ RNAV1
TF	MZ413	-	196 (198.0)	-	8.0	-	4000 (*)	(1)	Conventional/ RNAV1
TF	TOPRU	-	196 (198.0)	-	6.5	-	4000	(1)	Conventional/ RNAV1

(1) See ENR 2.1.1.1

(*) MZ413 to be crossed between 6000FT and 4000FT

HOLDING CONVENTIONAL

Path Terminator	Waypoint Identifier	Fly Over	Course °M (°T)	Turn Direction	Altitude Constraint	Speed Limit (kt)	Recommended Navaid	Bearing/Range to Navaid	Navigation Performance
HM	TOPRU	Y	196 (198.0)	R	4000	-	TOP VOR/DME	-	Conventional
HM	LEV	Y	203 (205.0)	L	4000	190	-	-	Conventional

WAYPOINT LIST

Waypoint Identifier	Coordinates
MZ401	44°48'07.85" N 007°46'53.47" E
MZ402	44°26'20.60" N 007°54'55.12" E
MZ403	44°29'51.47" N 007°44'55.29" E
MZ404	44°51'04.49" N 007°53'47.78" E
MZ407	44°40'11.37" N 007°58'06.43" E
MZ408	44°28'41.06" N 008°02'52.56" E
MZ411	44°48'36.78" N 007°54'35.72" E
MZ412	44°48'29.93" N 007°48'28.04" E
MZ413	44°47'55.07" N 007°48'12.40" E

Intenzionalmente bianca

Intentionally left blank