

ICAO - VISUAL APPROACH CHART

AD 2 LIMP 5-1

SCALE 1:250.000



FIS Milano Information  
APP Parma APP  
TWR Parma TWR

128.925  
127.575  
118.450

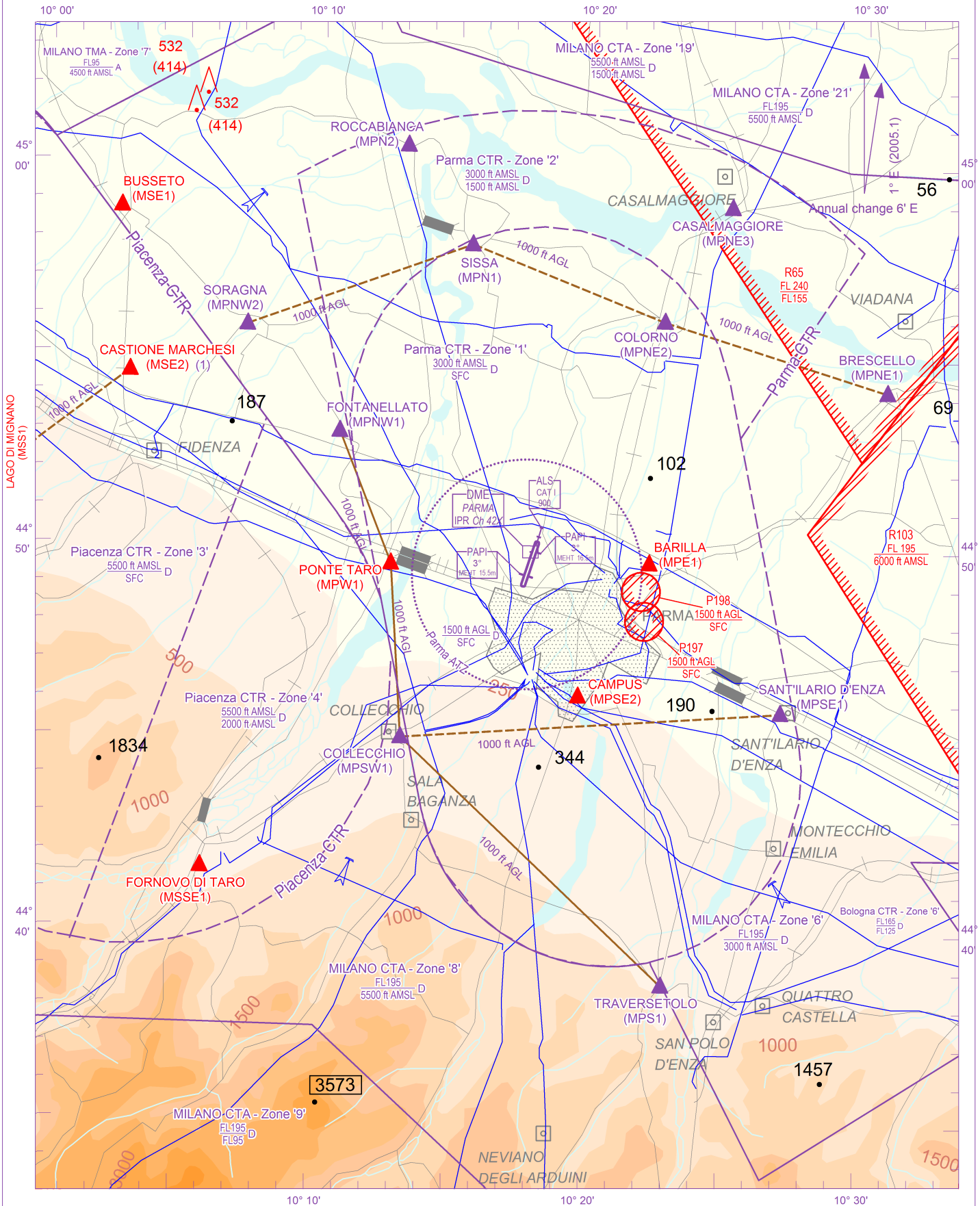
AD ELEV

161

L  
I  
M  
P

PARMA

CHANGE: WINGBAR RIGHT SIDE PAPI RWY 20 COMPLETELY WITHDRAWN AND UPDATED CHART



AIRSPACE CLASSIFICATION See AIP ENR 1.4
TRANSITION ALT 6000 FT
ELEV AND ALT IN FT IF NOT OTHERWISE INDICATED

**REMARK**  
(1) CASTIONE MARCHESI (MSE2): hold 1000 ft AGL

**WARNING**

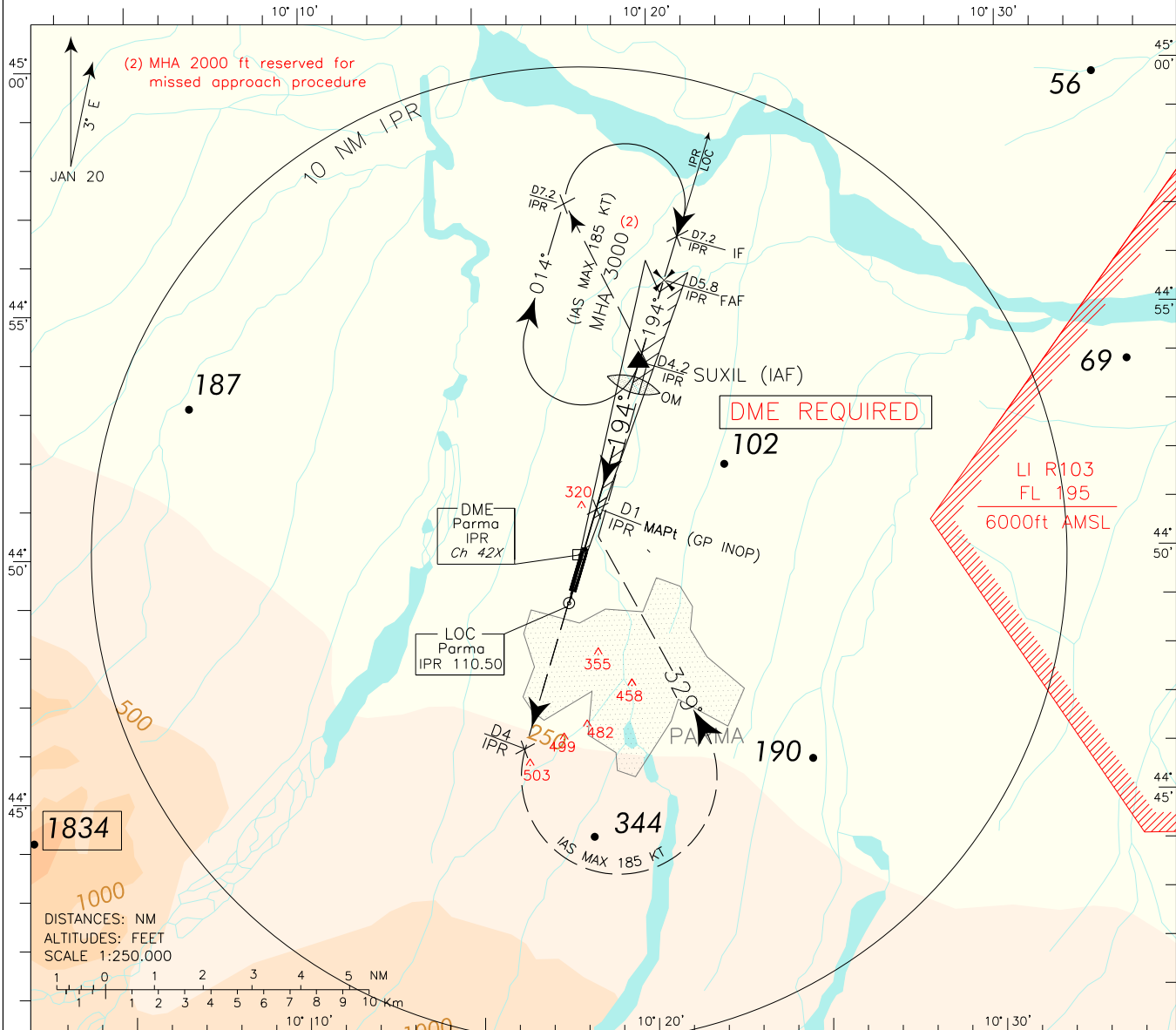
# ICAO – INSTRUMENT APPROACH CHART

AD 2 LIMP 5-3

(1)REMARK: Circling for RWY 02 is allowed during daylight time and with visibility equal or more than 1500 m.	APP	Parma APP	127.575	AD ELEV	LIMP	PARMA ILS RWY 20
	TWR	Parma TWR	118.450	161		

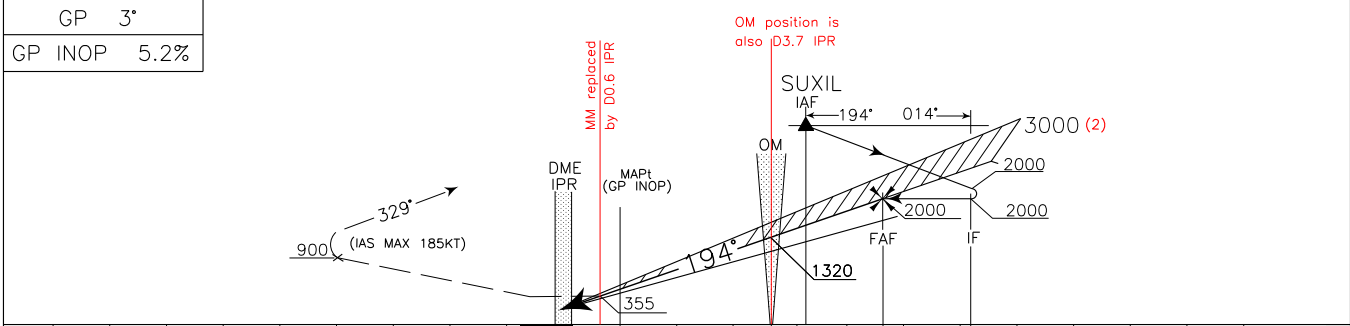
DOC. 8168 - ED.6 - 2014

CHANGE: MAGNETIC VARIATION UPDATED



TRANSITION ALT 6000

MISSED APPROACH: At 1 NM IPR DME proceed on TR 194° climbing to 2000 ft. Crossing 900 ft or above, not beyond 4 NM IPR DME, turn left (IAS MAX 185 kt) on TR 329° to intercept and follow IPR LOC outbound (TR 014°), toward SUXIL holding pattern. (Hold between 4.2 NM and 7.2 NM IPR DME).



IPR DME	8	7	6	5	4	3	2	1	THR	ELEV	147	2	3	3.7	4.2	5.8	6	7.2	8	9	10	11	12	IPR DME
NM	9	8	7	6	5	4	3	2	1	0	1	2	3	4	5	6	7	8	9	10	11	12	NM	

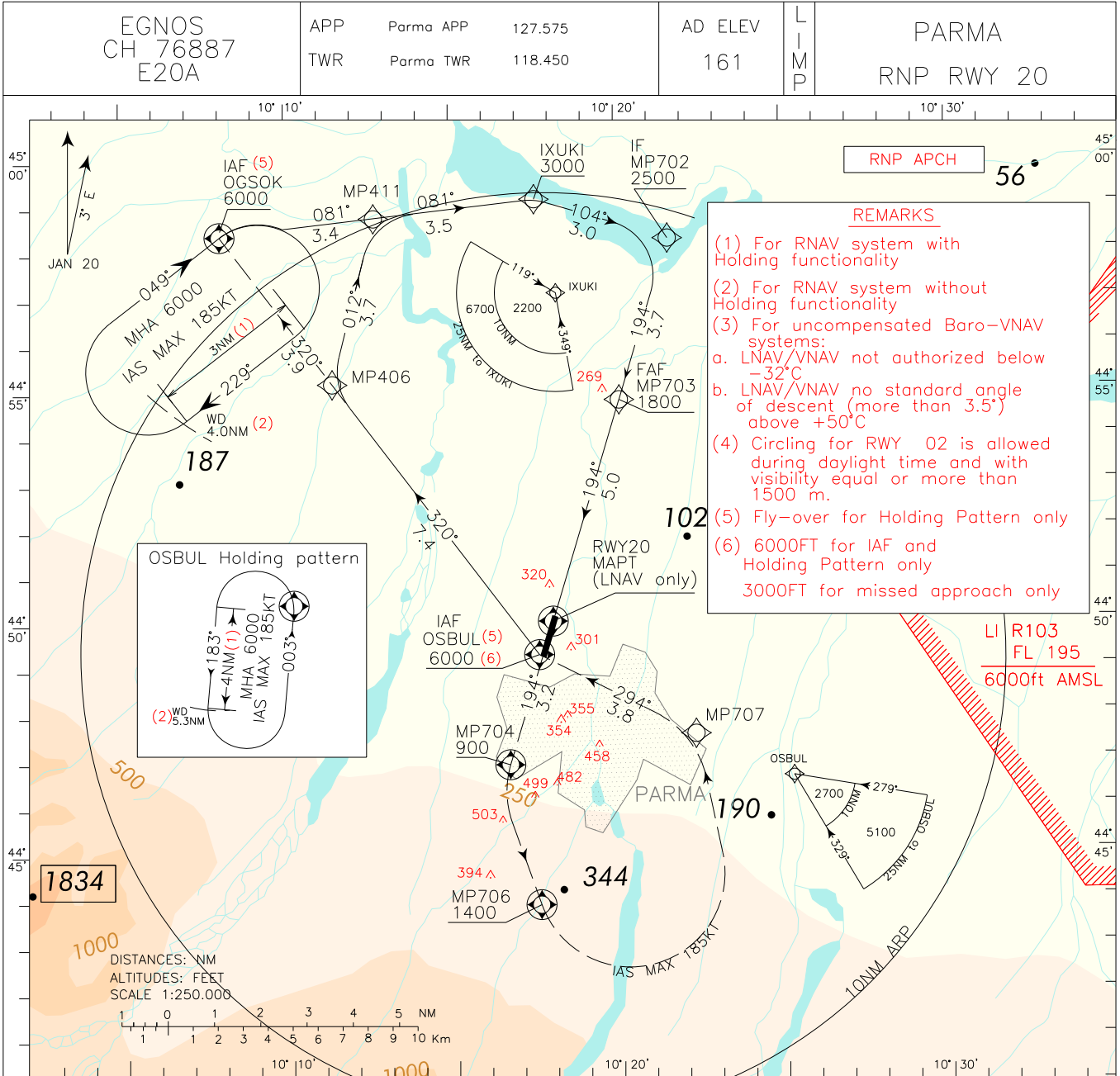
OCA (OCH)		A	B	C	CIRCLING SECTOR 	FT PER MIN	GS	FAF-MAPt	MAPt-THR	DME IPR	ALT (HGT)	MNM SECT ALT ARP 
STRAIGHT IN APPROACH	ILS	347 (200)	348 (201)	356 (209)		425	80	3 : 36	0 : 36	5	1738(1591)	
	GP INOP	600 (453)				530	100	2 : 53	0 : 29	3	1101 (954)	
						635	120	2 : 24	0 : 24	2	783 (636)	
CIRCLING (1)		850 (689)		1000(839)		740	140	2 : 03	0 : 21	1	464 (317)	
					845	160	1 : 48	0 : 18				

ICAO - INSTRUMENT APPROACH CHART

AD 2 LIMP 5-5

DOC. 8168 - ED.6 2014 - AMDT 7

CHANGE: MAGNETIC VARIATION UPDATED



STRAIGHT IN APPROACH		CIRCLING (4)			CIRCLING SECTOR 	FT PER MIN	GS	FAF-MAPt	Dist. THR20	ALT (HGT)	MNM SECT ALT ARP
LPV	LNAV/VNAV	LNAV	CIRCLING (4)								
376 (229)	451 (304)	570 (423)	850 (689)		440	80	5.0 NM	5.0	1800(1653)	9000	
388 (241)	463 (316)	570 (423)	1000 (839)		550	100	3 : 00	4.0	1480(1146)		
396 (249)	471 (324)	570 (423)	1000 (839)		660	120	2 : 30	2.0	1160 (1013)		
		570 (423)	1000 (839)		770	140	2 : 09	1.0	840 (693)		
		570 (423)	1000 (839)		880	160	1 : 53				
		570 (423)	1000 (839)		990	180	1 : 40				

## TABULAR DESCRIPTION

## RNP RWY20 – Instrument Approach procedure

Serial Number	Path Terminator	Waypoint Identifier	Fly Over	Course °M(°T)	Magnetic Variation	Distance (NM)	Turn Direction	Altitude (ft)	Speed Limit (kt)	VPA/TCH	Navigation Specification
010	IF	OSBUL	-	-	-	-	-	+6000	-	-	RNP APCH
020	TF	MP406	-	320 (323.2)	-	7.4	-	+3000	-185	-	RNP APCH
030	TF	MP411	-	012 (014.6)	-	3.7	-	+3000	-185	-	RNP APCH
040	TF	IXUKI	-	081 (083.7)	-	3.5	-	+3000	-185	-	RNP APCH
010	IF	OGSOK	-	-	-	-	-	+6000	-	-	RNP APCH
020	TF	IXUKI	-	081 (083.7)	-	6.9	-	+3000	-185	-	RNP APCH
010	IF	IXUKI	-	-	-	-	-	+3000	-185	-	RNP APCH
020	TF	MP702	-	104 (107.0)	-	3.0	-	+2500	-185	-	RNP APCH
030	TF	MP703	-	194 (197.4)	-	3.7	R	+1800	-185	-	RNP APCH
040	TF	RWY20	Y	194 (197.4)	-	5.0	-	-	-185	-3.0/15.0M	RNP APCH
050	CF	MP704	Y	194 (197.4)	+3.0	3.2	-	+900	-185	-	RNP APCH
060	DF	MP706	Y	-	-	-	L	+1400	-185	-	RNP APCH
070	DF	MP707	-	-	-	-	L	-	-185	-	RNP APCH
080	TF	OSBUL	-	294 (297.4)	-	3.8	-	+3000	-185	-	RNP APCH
90	TF	OGSOK	-	320 (323.2)	-	11.3	-	+6000	-185	-	RNP APCH
100	HM	OGSOK	Y	049 (051.9)	-	-	R	+6000	-185	-	RNP APCH

Path Terminator	Waypoint Identifier	Inbound Course °M (°T)	Leg Distance (NM) (1)	Timing(min.)/ Waypoint Distance (NM) (2)	Turn Direction	Minimum Altitude (FT)	Maximum Altitude (FL)	Speed Limit (kt)	Magnetic Variation (°)	Navigation Specification
HM	OGSOK	049 (051.9)	3.0	- / 4.0	R	+6000	-	-185	+3.0	RNAV1
HM	OSBUL	003 (006.0)	4.0	- / 5.3	L	+6000	-	-185	+3.0	RNAV1

(1) RNAV system with holding functionality

(2) RNAV system without holding functionality

**WAYPOINT LIST**  
**RNP RWY20**

<b>Waypoint Identifier</b>	<b>Coordinates</b>
MP406	44°55'13.71" N 010°11'24.57" E
MP411	44°58'48.35" N 010°12'43.49" E
MP702	44°58'18.71" N 010°21'40.12" E
MP703	44°54'49.80" N 010°20'07.73" E
MP704	44°46'57.97" N 010°16'40.00" E
MP706	44°43'55.85" N 010°17'32.91" E
MP707	44°47'35.64" N 010°22'19.32" E

## SBAS FAS DATA BLOCK LIMP RNP RWY20

## Input data

Operation Type	0
SBAS Provider	1
Airport Identifier	LIMP
Runway	20
Runway Direction	0
Approach Performance Designator	0
Route Indicator	
Reference Path Data Selector	0
Reference Path Identifier	E20A
LTP/FTP Latitude	445003.5375N
LTP/FTP Longitude	0101801.6295E
LTP/FTP Ellipsoidal Height (metres)	83.2
FPAP Latitude	444903.5410N
Delta FPAP Latitude (seconds)	-59.9965
FPAP Longitude	0101735.2480E
Delta FPAP Longitude (seconds)	-26.3815
Threshold Crossing Height	15.0
TCH Units Selector	1
Glidepath Angle (degrees)	3.00
Course Width (metres)	105.00
Length Offset (metres)	0
HAL (metres)	40.0
VAL (metres)	35.0

## Output data

Data Block	10 10 0D 09 0C 14 00 00 01 30 32 05 23 A5 3D 13 3B A4 6B 04 40 17 47 2B FE E5 31 FF 2C 81 2C 01 64 00 C8 AF 41 33 A9 A8
Calculated CRC Value	4133A9A8

## Required Additional Data

ICAO Code	LI
LTP/FTP Orthometric Height (metres)	44.8
FPAP Orthometric Height (metres)	49.2

EUROCONTROL FAS DB tool Version 3.1.0