

CHANGE: magnetic variation updated; procedures naming changed and GEO ATS updated.

**STAR description****BETMU 2B (ATC discretion)**

BETMU – TR 289° (RDL 289 BOA VOR) bound to OSBUL (RDL 289/46NM BOA VOR), then TR 320° (RDL/QDR 140 TZO VOR/NDB) until MP406 (RDL/QDR 140/48 NM TZO VOR NDB/DME or INT RDL/QDR 140 TZO VOR NDB / 7NM IPR DME), then turn right to join ARC 9 NM IPR DME until MP407, then turn right to intercept IPR LOC bound to SUXIL.

MEA: BETMU – MP406: 6000 FT; MP406 – MP407: 3000 FT; MP407 – MP408: 2000 FT (1); MP408 - SUXIL: 1500 FT (1).

(1) 3000 FT if racetrack is expected.

**LUPOS 1B (2)**

LUPOS – TR 324° bound to OSBUL, then TR 320° (RDL/QDR 140 TZO VOR NDB) until MP406, then turn right to join ARC 9 NM IPR DME until MP407, then turn right to intercept IPR LOC bound to SUXIL.

MEA: LUPOS – OSBUL: 6000 FT; OSBUL – MP406: 5000 FT; MP406 – MP407: 3000 FT; MP407 – MP408: 2000 FT (1); MP408 - SUXIL: 1500 FT (1).

Path Terminator	Waypoint Name	Fly Over	Track °Mag	Turn Direction	MEA	Speed Limit	Recommended Navaid	Bearing/Range to Navaid	Navigation Performance
IF	LUPOS	-	-	-	-	-	-	-	P-RNAV
TF	OSBUL	-	324°	-	6000	-	-	-	P-RNAV
TF	MP406	Y	320°	-	5000	-	-	-	P-RNAV
-	MP407	-	-	-	3000	200	IPR DME	ARC 9 NM IPR DME	Conventional
-	MP408	-	-	-	2000 (1)	-	IPR LOC/DME	014° IPR LOC/7.2 NM IPR DME	Conventional
-	MP409	-	194°	-	1500 (1)	-	IPR LOC/DME	014° IPR LOC/5.8 NM IPR DME	Conventional
-	SUXIL	-	194°	-	1500 (1)	-	IPR LOC/DME	014° IPR LOC/4.2NM IPR DME	Conventional

(1) 3000 FT if racetrack is expected

(2) Utilizzabile quando disponibile Milano Radar /Usable when Milano Radar service available

**MISPO 2B**

MISPO – TR 140° (RDL/QDR 140 TZO VOR NDB) until OGSOK (RDL/QDR 140/44 NM TZO VOR NDB/DME or INT RDL/QDR 140 TZO VOR NDB /11NM IPR DME), then turn left to join ARC 9 NM IPR DME until MP407, then turn right to intercept IPR LOC bound to SUXIL.

MEA: MISPO – OGSOK: 5000 FT; OGSOK – MP407: 3000 FT; MP407 – MP408: 2000 FT (1); MP408 – SUXIL: 1500 FT (1).

(1) 3000 FT if racetrack is expected

Path Terminator	Waypoint (FIX)	Inbound Course °M (°T)	Navaid	Outbound leg	Turn Direction	Minimum Altitude (FT)	Maximum Altitude (FL)	Speed Limit (KT)	Magnetic Variation (°)	Navigation Specification
HM	OSBUL (RDL214/44NM)	034 (36.8)	VIL VORTAC	-	L	6000	-	- 200	+3	Conventional

Path Terminator	Waypoint Identifier	Inbound Course °M (°T)	Leg Distance (NM) (1)	Timing(min./ Waypoint Distance (NM) (2)	Turn Direction	Minimum Altitude (FT)	Maximum Altitude (FL)	Speed Limit (kt)	Magnetic Variation (°)	Navigation Specification
HM	OSBUL	003 (006)	4.0	-/5.3	L	+6000	-	-185	+3.0	RNAV1

(1) RNAV system with holding functionality

(2) RNAV system without holding functionality

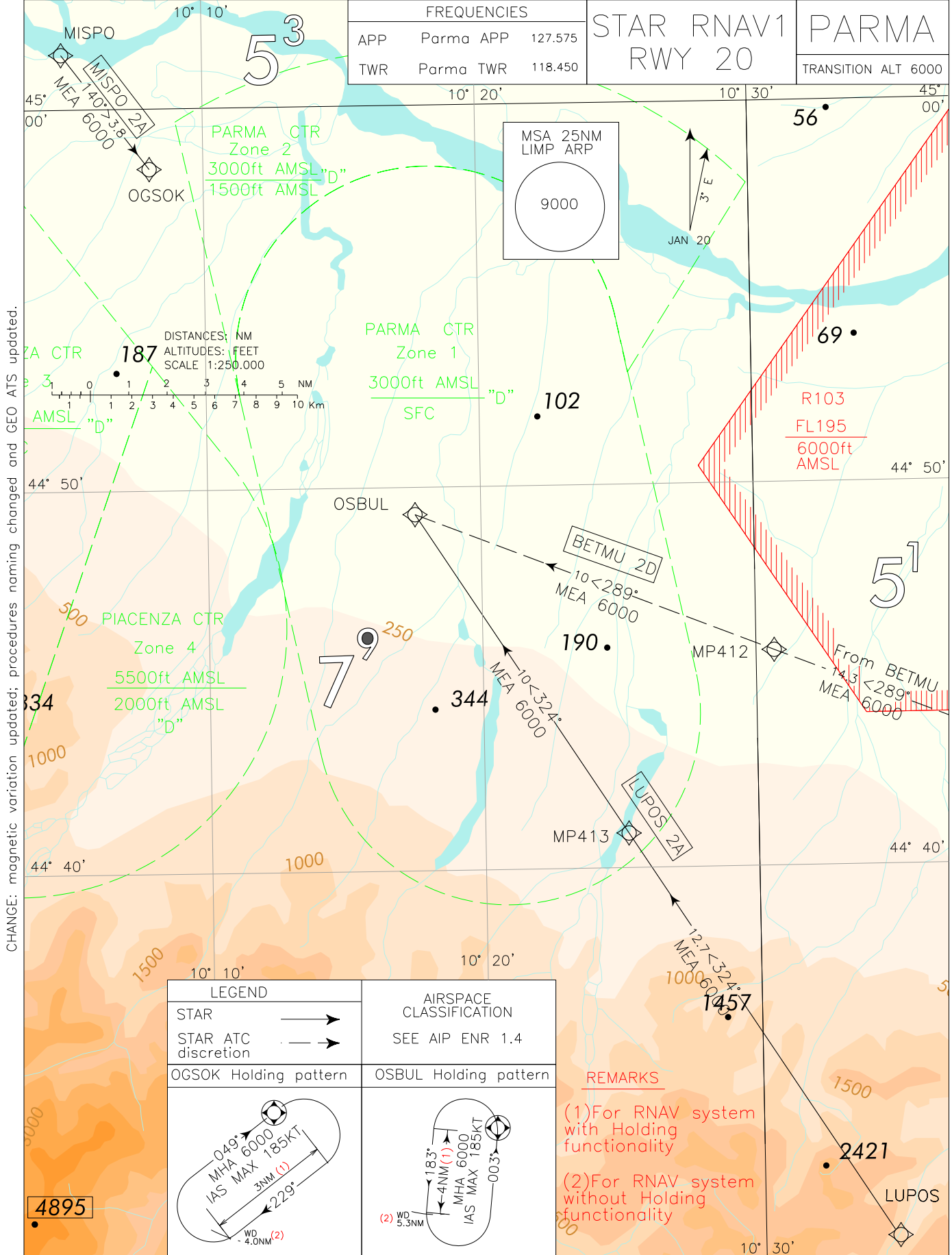
#### WAYPOINT LIST

Waypoint Identifier	Coordinates
MP406	44°55'13.71" N 010°11'24.57" E
MP407	44°58'53.18" N 010°18'57.79" E
MP408	44°56'45.77" N 010°20'58.93" E
MP409	44°55'19.88" N 010°20'21.01" E

FREQUENCIES		
APP	Parma APP	127.575
TWR	Parma TWR	118.450

STAR RNAV1  
RWY 20

PARMA  
TRANSITION ALT 6000



CHANGE: magnetic variation updated; procedures naming changed and GEO ATS updated.

LEGEND	AIRSPACE CLASSIFICATION
STAR →	SEE AIP ENR 1.4
STAR ATC discretion →	
OGSOK Holding pattern	OSBUL Holding pattern

**REMARKS**  
(1) For RNAV system with Holding functionality  
(2) For RNAV system without Holding functionality

## PARMA STAR RNAV1 RWY 20

## BETMU 2D (ATC Discretion)

Path Terminator	Waypoint Identifier	Fly Over	Course °M(°T)	Magnetic Variation (°)	Distance (NM)	Turn Direction	Altitude (ft)	Speed Limit (kt)	Navigation Specification
IF	BETMU	-	-	-	-	-	-	-	RNAV1
TF	MP412	-	289 (291.8)	+3	14.3	-	+6000	-	RNAV1
TF	OSBUL	-	289 (291.8)	+3	10.0	-	+6000	-	RNAV1

## LUPOS 2A

Path Terminator	Waypoint Identifier	Fly Over	Course °M(°T)	Magnetic Variation (°)	Distance (NM)	Turn Direction	Altitude (ft)	Speed Limit (kt)	Navigation Specification
IF	LUPOS	-	-	-	-	-	-	-	RNAV1
TF	MP413	-	324 (327.2)	+3	12.7	-	+6000	-	RNAV1
TF	OSBUL	-	324 (327.2)	+3	10.0	-	+6000	-	RNAV1

## MISPO 2A

Path Terminator	Waypoint Identifier	Fly Over	Course °M(°T)	Magnetic Variation (°)	Distance (NM)	Turn Direction	Altitude (ft)	Speed Limit (kt)	Navigation Specification
IF	MISPO	-	-	-	-	-	-	-	RNAV1
TF	OGSOK	-	140 (142.9)	+3	3.8	-	+6000	-	RNAV1

## HOLDING RNAV1

Path Terminator	Waypoint Identifier	Inbound Course °M (°T)	Leg Distance (NM) (1)	Timing(min.)/Waypoint Distance (NM) (2)	Turn Direction	Minimum Altitude (FT)	Maximum Altitude (FL)	Speed Limit (kt)	Magnetic Variation (°)	Navigation Specification
HM	OGSOK	049 (051.9)	3.0	- / 4.0	R	+6000	-	-185	+3.0	RNAV1
HM	OSBUL	003 (006.0)	4.0	- / 5.3	L	+6000	-	-185	+3.0	RNAV1

## REMARKS

- (1) RNAV system with holding functionality  
(2) RNAV system without holding functionality

## WAYPOINT LIST

Waypoint Identifier	Coordinates
MP412	44°45'40.15" N 010°30'39.51" E
MP413	44°40'57.00" N 010°25'14.05" E

Intenzionalmente bianca

*Intentionally left blank*