



**NOISE ABATEMENT PROCEDURES RWY 36**

In addition to what hereafter is stated, see also ENR 1.5 for general provisions.

According to ENAC regulation 0003504/OML dated 05/09/2008, the following new SIDs will be used as noise abatement procedures. Consequently, all traffic departing from Milano/Linate aerodrome shall plan instrument departure and will be cleared by ATC according to the following scheme:

Planned Route	Exit radial	Assigned SID
OMETO, ARLES,	RDL 338 LIN VOR	SRN 9A (ARLES, OMETO)
ELTAR, NESTI, PEPAG 1B, OSKOR	RDL 003 LIN VOR	RUVAB 6A TZO 8C (PEPAG 1B, OSKOR)
LOGDI (dest. LIRF and Sardegna excepted)	RDL 003 LIN VOR with turning at D2.5 LIN DME	ABSEM 6A
EKPAL (Dest. LIRF), GEN	HDG 128°	TOVSA 6A

**INITIAL CLIMB PROCEDURES RWY 36**

After take-off proceed on track 353° and, at 500ft AGL (850ft AMSL), not before LIN VOR/DME

- A) If cleared via SID ABSEM 6A, RUVAB 7A, SRN 9D, TOVSA 6A and TZO 8C, turn right to join the assigned SID  
B) If cleared via SID PEPAG 1A, RUVAB 6B or SRN 6A, turn left to join the assigned SID

**SID DESCRIPTION**

Initial climb procedure executed:

**ABSEM 6A**

Turn right to join RDL 003 LIN VOR till point RDL 003 /2.5 NM LIN VOR/DME, then turn right to join RDL 119 SRN VOR bound to ABSEM (INT RDL 119/19 NM SRN VOR/DME).

MCA/MCL: RDL 003 /D2.5 LIN VOR/DME, 2000FT; ABSEM, 4000FT

**REMARKS**

1. PDG: between LIN VOR and RDL 003/D2.5 LIN VOR/DME 7.5% (456 ft/NM).
2. Turn over point RDL 003/D2.5 shall be performed with IAS MAX 180 KT and bank angle 25° in order to follow as close as possible the nominal trajectory.
3. In order to avoid sensitive areas close to the airport, undue delay in joining RDL 003 LIN VOR must be avoided.
4. For FMS equipped aircraft the ARINC Path Terminator sequence is reported below to tailor as much as possible the initial climb path to the nominal path.

Path Terminator	Waypoint Identifier	Fly Over	Course °M(°T)	Magnetic Variation	Distance (NM)	Turn Direction	Altitude (ft)	Speed Limit (kt)	Navigation Specification
IF	RWY 36 DER	-	-	-	-	-	-	-	RNAV1
FA	LIN	-	353° (355.2)	-	-	-	+850	-	RNAV1
CF	ML461	-	003° (006.1)	+3	-	-	-	-	RNAV1
TF	ML462	-	003° (006.0)	-	0.6	-	+2000	-	RNAV1
TF	ML463	-	003° (006.0)	-	1.0	-	-	180	RNAV1
TF	ML464	-	089° (091.1)	-	1.5	-	-	180	RNAV1
TF	ABSEM	-	119° (123.0)	-	3.9	-	+4000	-	RNAV1

**PEPAG 1A**

Turn left to join and follow RDL 338 LIN VOR till point RDL 338/5.5 NM LIN VOR/DME, then turn right on TR 018° to join RDL 342 LIN VOR to PEPAG (INT RDL 342/32.5NM LIN VOR/DME).

MCA/MCL: RDL 338/3 NM LIN VOR/DME, 2200FT; RDL 338/5.5 NM LIN VOR/DME, 3500FT; RDL 342/14 NM LIN VOR/DME, FL 85; RDL 342/19 NM LIN VOR/DME, FL 105; RDL 342/24 NM LIN VOR/DME, FL 135

**REMARKS**

1. **PDG: 9% (550 ft/NM).**
2. **Aircraft with poor climb performance, unable to comply with the above gradients, shall advise ATC at start-up and request to be cleared on a SID towards TZO.**
3. **SID restricted to jet aircraft.**
4. **In order to avoid sensitive areas close to the airport, undue delay in joining RDL 338 LIN VOR must be avoided.**

**RUVAB 7A**

Turn right to join RDL 003 LIN VOR till point RDL 003/4 NM LIN VOR/DME (ML468), then turn right and proceed on TR 025° to RODRU, then TR 051° direct to RUVAB.

MCA/MCL: RDL 003/2.5 NM LIN VOR/DME, 2000FT; ML468, 3000FT; RODRU, 6000FT; RUVAB, FL 105

**REMARKS**

1. **PDG: Between LIN VOR e RDL 003/4 NM LIN VOR/DME (ML468) 10% (608 ft/NM).**
2. **In order to avoid sensitive areas close to the airport, undue delay in joining RDL 003 LIN VOR must be avoided.**

Path Terminator	Waypoint Identifier	Fly Over	Course °M(°T)	Magnetic Variation	Distance (NM)	Turn Direction	Altitude (ft)	Speed Limit (kt)	Navigation Specification
IF	RWY 36 DER	-	-	-	-	-	-	-	RNAV1
FA	LIN	-	353° (353.2)	-	-	-	+850	-	RNAV1
CF	ML462	-	003° (006.1)	+3	-	-	+2000	-	RNAV1
TF	ML468	-	003° (006.0)	-	1.5	-	+3000	-	RNAV1
TF	RODRU	-	025° (027.9)	-	9.7	-	+6000	-	RNAV1
TF	RUVAB	-	051° (053.7)	-	9.2	-	+FL105	-	RNAV1

**RUVAB 6B (ATC discretion)**

Turn left to join and follow RDL 338 LIN VOR till point RDL 338/5.5 NM LIN VOR/DME, then turn right on TR 018° to join RDL 350 LIN VOR (TR 350°) till point RDL 350/14 NM LIN VOR/DME, then turn right to join RDL/QDR 070 SRN VOR/NDB bound to RUVAB.

MCA/MCL: RDL 338/3 NM LIN VOR/DME, 2200FT; RDL 338/5.5 NM LIN VOR/DME, 3500FT; RDL 350/14 NM LIN VOR/DME, FL85; RUVAB, FL105

**REMARKS**

1. **PDG: 9% (550 ft/NM).**
2. **Aircraft with poor climb performance, unable to comply with the above gradients, shall advise ATC at start-up and request to be cleared on a SID towards TZO.**
3. **SID restricted to jet aircraft.**
4. **In order to avoid sensitive areas close to the airport, undue delay in joining RDL 338 LIN VOR must be avoided.**

**SRN 9D (ATC discretion, alternate to SRN 6A)**

Turn right to join and follow RDL 003 LIN VOR till point RDL 003/8 NM LIN VOR/DME, then turn left to join RDL 097 SRN VOR inbound to SRN VOR/DME.

MCA/MCL: RDL 003/2.5 NM LIN VOR/DME, 2000FT; RDL 003/4 NM LIN VOR/DME, 2800FT; RDL 003/8 NM LIN VOR/DME, 4000FT; (RDL 097/2.5 NM SRN VOR/DME, FL 90 ATC Discretion); SRN VOR/DME, FL 85

**REMARKS**

1. **PDG between LIN VOR and RDL 003/4 NM LIN VOR/DME 8% (486 ft/NM), then 5.5% (335 ft/NM).**
2. **In order to avoid sensitive areas close to the airport, undue delay in joining RDL 003 LIN VOR must be avoided.**

**SRN 6A**

Turn left to join RDL 338 LIN VOR till point RDL338/8 NM LIN VOR/DME, then turn left to join RDL/QDR 097 SRN VOR NDB direct to SRN VOR NDB/DME.

MCA/MCL: RDL 338/3 NM LIN VOR/DME, 2200FT; 338/5.5 NM LIN VOR/DME, 3500FT; RDL 338/8 NM LIN VOR/DME, 4000FT;  
(RDL 097/2.5 NM SRN VOR/DME, FL 90 ATC Discretion); SRN VOR/DME, FL85

**REMARKS**

1. **PDG: 7.5% (462 ft/NM).**

**TOVSA 6A**

Turn right on track 128° until 18 NM SRN DME, then turn right to join RDL 129 SRN VOR bound to ATGAM (INT RDL 129/21 NM SRN VOR /DME), then turn right to join QDR 326° COD L (TR 146°) to COD L to be left on QDR 157° COD L (TR 157°) bound to TOVSA (INT QDR 157° COD L/27 NM LIN DME).

MCA/MCL: INT RDL 048 LIN VOR, 1500FT; INT TR 128°/18 NM SRN DME, 2500FT; ATGAM, 3500FT; COD L, 5000FT; TOVSA, 6000FT

**REMARKS**

2. **PDG: between LIN VOR and INT TR 128°/18 NM SRN DME 7.5% (456 ft/NM).**
3. **In order to avoid sensitive areas close to the airport, the first turn after take-off shall be performed with bank angle not higher than 20°.**

**TZO 8C (ATC discretion) (1)**

Turn right to join RDL 003 LIN VOR till point RDL 003/4 NM LIN VOR/DME, then turn right (IAS MAX 220 KT) to join RDL 267 TZO VOR bound to TZO VOR/DME.

MCA/MCL: RDL 003/2.5 NM LIN VOR/DME, 2000FT; RDL 003/4 NM LIN VOR/DME, 2800FT;  
TZO VOR/DME, FL 85 (see also Remark 3)

- (1) Compulsory only for turbo propeller aircraft or no RNAV equipped

**REMARKS**

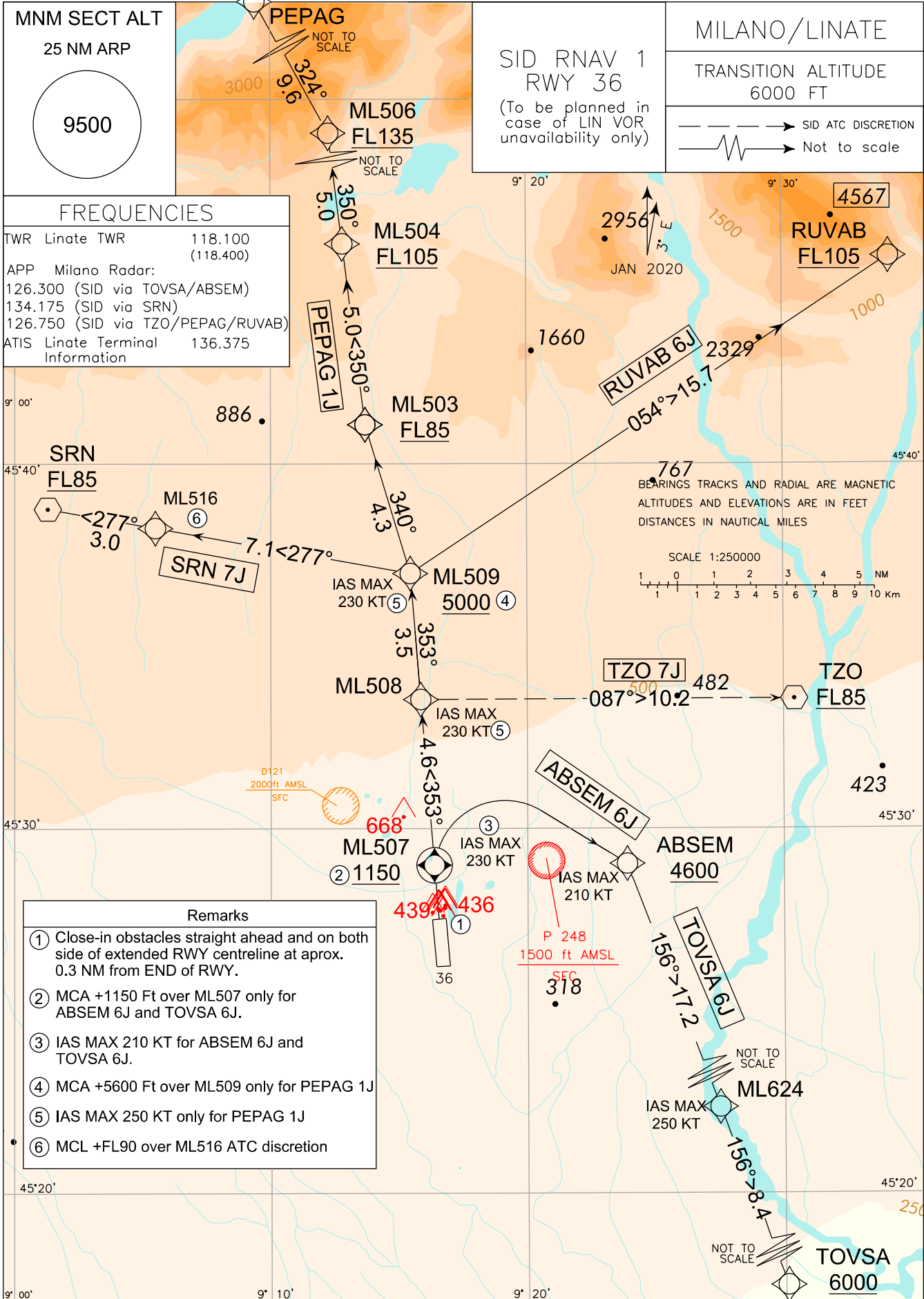
1. **PDG: Between LIN VOR e RDL 003/D4 LIN VOR/DME 8% (486 ft/NM).**
2. **In order to avoid sensitive areas close to the airport, undue delay in joining RDL 003 LIN VOR must be avoided.**
3. **Climb in TZO holding pattern if at level lower than FL85.**

**WAYPOINT LIST**

Waypoint Identifier	Coordinates
ML461	45°29'34.31" N 009°16'48.20" E
ML462	45°30'10.11" N 009°16'53.55" E
ML463	45°31'12.16" N 009°17'02.84" E
ML464	45°31'10.33" N 009°19'12.24" E
ML468	45°31'39.69" N 009°17'06.99" E

Intenzionalmente bianca

*Intentionally left blank*



**MNM SECT ALT**  
25 NM ARP

9500

**SID RNAV 1**  
**RWY 36**  
(To be planned in case of LIN VOR unavailability only)

**MILANO/LINATE**  
TRANSITION ALTITUDE  
6000 FT

---> SID ATC DISCRETION  
---> Not to scale

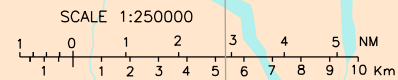
**FREQUENCIES**

TWR Linate TWR 118.100 (118.400)  
APP Milano Radar:  
126.300 (SID via TOVSA/ABSEM)  
134.175 (SID via SRN)  
126.750 (SID via TZO/PEPAG/RUVAB)  
ATIS Linate Terminal Information 136.375

CHANGE: NIKMO 7J WITHDRAWN. PEPAG 1J IMPLEMENTED.

- Remarks**
- ① Close-in obstacles straight ahead and on both side of extended RWY centreline at aprox. 0.3 NM from END of RWY.
  - ② MCA +1150 Ft over ML507 only for ABSEM 6J and TOVSA 6J.
  - ③ IAS MAX 210 KT for ABSEM 6J and TOVSA 6J.
  - ④ MCA +5600 Ft over ML509 only for PEPAG 1J
  - ⑤ IAS MAX 250 KT only for PEPAG 1J
  - ⑥ MCL +FL90 over ML516 ATC discretion

BEARINGS TRACKS AND RADIAL ARE MAGNETIC  
ALTITUDES AND ELEVATIONS ARE IN FEET  
DISTANCES IN NAUTICAL MILES



**SID RNAV 1 RWY 36****(To be planned in case of LIN VOR unavailability only)****NOISE ABATEMENT PROCEDURES RWY 36**

See ENR 1.5 for general provisions of Civil Aviation Authority (ENAC).

**ABSEM 6J**

Minimum Climb Gradient: 8.0% (486 FT/NM).

Path Terminator	Waypoint Identifier	Fly Over	Course °M (°T)	Magnetic Variation	Distance (NM)	Turn Direction	Altitude (ft)	Speed Limit (kt)	Navigation Specification
CA	-	-	353 (355.7)	+2.8	-	-	+760	-210	RNAV 1
CF	ML507	Y	353 (355.7)	+2.8	-	-	+1150	-210	RNAV 1
DF	ABSEM	-	-	-	-	R	+4600	-210	RNAV 1

**RUVAB 6J**

Minimum Climb Gradient: 8% (486 FT/NM).

Path Terminator	Waypoint Identifier	Fly Over	Course °M (°T)	Magnetic Variation	Distance (NM)	Turn Direction	Altitude (ft)	Speed Limit (kt)	Navigation Specification
CA	-	-	353 (355.7)	+2.8	-	-	+760	-230	RNAV 1
CF	ML507	Y	353 (355.7)	+2.8	-	-	-	-230	RNAV 1
TF	ML508	-	353 (355.4)	-	4.6	-	-	-230	RNAV 1
TF	ML509	-	353 (355.4)	-	3.5	-	+5000	-230	RNAV 1
TF	RUVAB	-	054 (056.4)	-	15.7	-	+FL105	-	RNAV 1

**PEPAG 1J**

Minimum Climb Gradient: 9.0% (546 FT/NM).

Path Terminator	Waypoint Identifier	Fly Over	Course °M (°T)	Magnetic Variation	Distance (NM)	Turn Direction	Altitude (ft)	Speed Limit (kt)	Navigation Specification
CA	-	-	353 (355.7)	+2.8	-	-	+760	-250	RNAV 1
CF	ML507	Y	353 (355.7)	+2.8	-	-	-	-250	RNAV 1
TF	ML508	-	353 (355.4)	-	4.6	-	-	-250	RNAV 1
TF	ML509	-	353 (355.4)	-	3.5	-	+5600	-250	RNAV 1
TF	ML503	-	340 (343.2)	-	4.3	-	+FL85	-250	RNAV 1
TF	ML504	-	350 (352.9)	-	5.0	-	+FL105	-250	RNAV 1
TF	ML506	-	350 (352.9)	-	5.0	-	+FL135	-250	RNAV 1
TF	PEPAG	-	324 (326.5)	-	9.6	-	-	-	RNAV 1

**REMARKS**

1. Aircraft with poor climb performance, unable to comply with the above gradients, shall advise ATC at start-up and request to be cleared on a SID towards TZO.
2. SID restricted to jet aircraft.

**SRN 7J**

Minimum Climb Gradient: 8% (486 FT/NM).

Path Terminator	Waypoint Identifier	Fly Over	Course °M (°T)	Magnetic Variation	Distance (NM)	Turn Direction	Altitude (ft)	Speed Limit (kt)	Navigation Specification
CA	-	-	353 (355.7)	+2.8	-	-	+760	-230	RNAV 1
CF	ML507	Y	353 (355.7)	+2.8	-	-	-	-230	RNAV 1
TF	ML508	-	353 (355.4)	-	4.6	-	-	-230	RNAV 1
TF	ML509	-	353 (355.4)	-	3.5	-	+5000	-230	RNAV 1
TF	ML516	-	277 (280.2)	-	7.1	-	(1)	-	-
TF	SRN	-	277 (280.0)	-	3.0	-	+FL85	-	RNAV 1

**REMARKS**

1. MCL +90 ATC Discretion.

**TOVSA 6J**

Minimum Climb Gradient: 8.0% (486 FT/NM) until ABSEM.

Path Terminator	Waypoint Identifier	Fly Over	Course °M (°T)	Magnetic Variation	Distance (NM)	Turn Direction	Altitude (ft)	Speed Limit (kt)	Navigation Specification
CA	-	-	353 (355.7)	+2.8	-	-	+760	-210	RNAV 1
CF	ML507	Y	353 (355.7)	+2.8	-	-	+1150	-210	RNAV 1
DF	ABSEM	-	-	-	-	R	+4600	-210	RNAV 1
TF	ML624	-	156 (159.2)	-	17.2	-	-	-250	RNAV 1
TF	TOVSA	-	156 (158.6)	-	8.4	-	+6000	-	RNAV 1

**TZO 7J (ATC Discretion)**

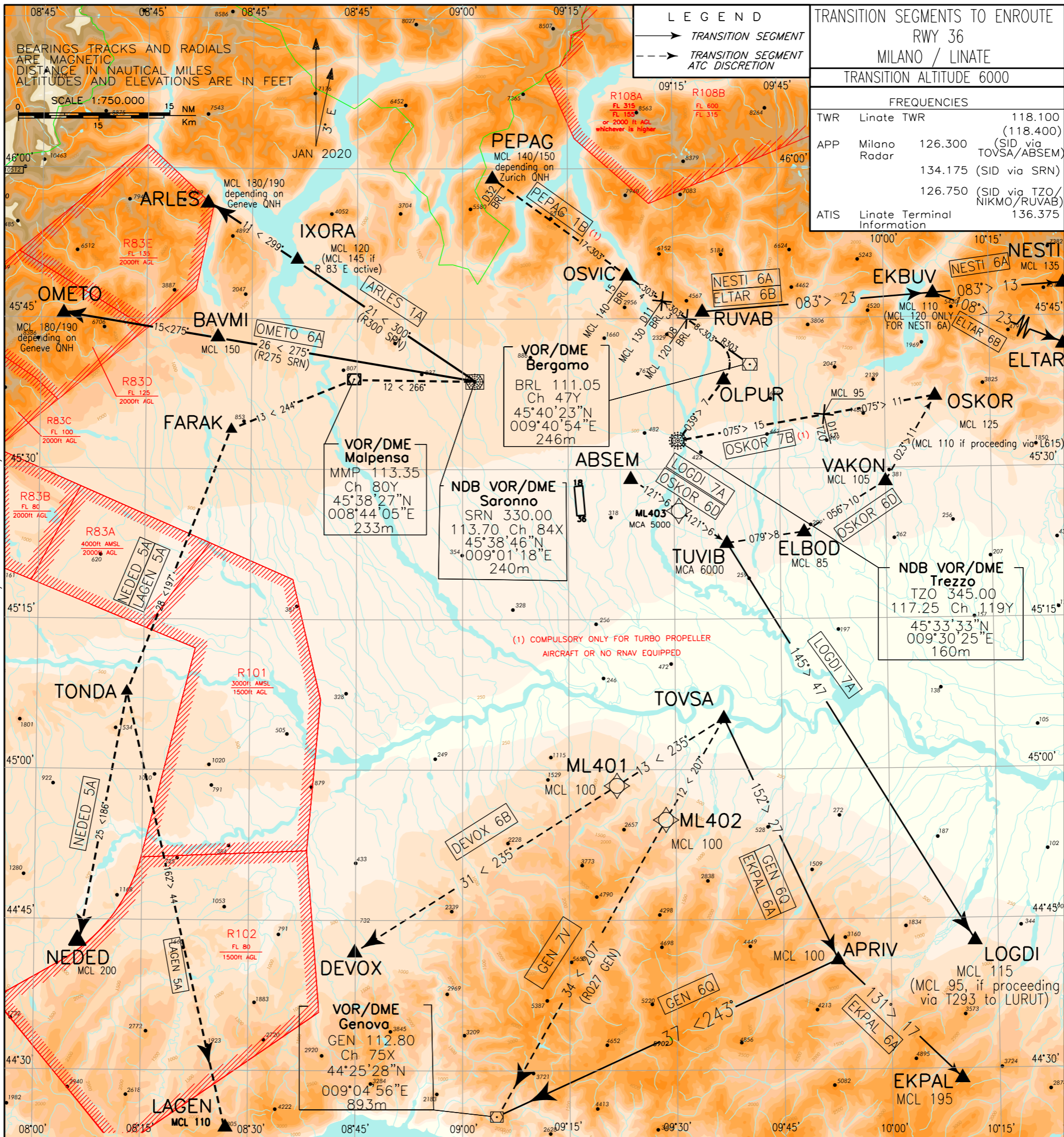
Minimum Climb Gradient: 8.7% (528 FT/NM)

Path Terminator	Waypoint Identifier	Fly Over	Course °M (°T)	Magnetic Variation	Distance (NM)	Turn Direction	Altitude (ft)	Speed Limit (kt)	Navigation Specification
CA	-	-	353 (355.7)	+2.8	-	-	+760	-230	RNAV 1
CF	ML507	Y	353 (355.7)	+2.8	-	-	-	-230	RNAV 1
TF	ML508	-	353 (355.4)	-	4.6	-	-	-230	RNAV 1
TF	TZO	-	087 (089.8)	-	10.2	R	+FL85	-	RNAV 1

**WAYPOINT LIST**

Waypoint Identifier	Coordinates
ML503	45°41'04.45" N 009°13'41.75" E
ML504	45°46'02.07" N 009°12'48.58" E
ML506	45°50'59.67" N 009°11'55.26" E
ML507	45°28'59.62" N 009°16'21.88" E
ML508	45°33'32.27" N 009°15'50.88" E
ML509	45°36'59.55" N 009°15'27.22" E
ML516	45°38'14.28" N 009°05'29.82" E
ML624	45°12'58.25" N 009°32'29.93" E





CHANGE: PEPAG 1B IMPLEMENTED. OSKOR 7B MODIFIED. ABESI 6A/8B and CANNE 5A/8B WITHDRAWN. ARLES 1A AND OMETO 6A UPDATED.

**LEGEND**

- TRANSITION SEGMENT
- - -> TRANSITION SEGMENT ATC DISCRETION

**TRANSITION SEGMENTS TO ENROUTE**  
RWY 36  
MILANO / LINATE  
TRANSITION ALTITUDE 6000

**FREQUENCIES**

TWR	Linate TWR	118.100 (118.400) (SID via TOVSA/ABSEM)
APP	Milano Radar	126.300 134.175 (SID via SRN) 126.750 (SID via TZO/NIKMO/RUVAB)
ATIS	Linate Terminal Information	136.375

**VOR/DME Malpensa**  
MMP 113.35  
Ch 80Y  
45°38'27"N  
008°44'05"E  
233m

**VOR/DME Bergamo**  
BRL 111.05  
Ch 47Y  
45°40'23"N  
009°40'54"E  
246m

**NDB VOR/DME Saronno**  
SRN 330.00  
113.70 Ch 84X  
45°38'46"N  
009°01'18"E  
240m

**NDB VOR/DME Trezzo**  
TZO 345.00  
117.25 Ch 119Y  
45°33'33"N  
009°30'25"E  
160m

**VOR/DME Genova**  
GEN 112.80  
Ch 75X  
44°25'28"N  
009°04'56"E  
89.3m

(1) COMPULSORY ONLY FOR TURBO PROPELLER AIRCRAFT OR NO RNAV EQUIPPED

**TRANSITION SEGMENT TO ENROUTES RWY 36****ARLES 1A**

SRN VOR NDB proceed on TR 300° (RDL/QDR 300 SRN VOR NDB) to IXORA (INT RDL/QDR 300/21 NM SRN VOR NDB/DME) direct to ARLES (INT RDL/QDR 299/32 NM SRN VOR NDB/DME).

MCL: IXORA, FL120 (FL 145 if R 83 E is active); ARLES, FL180/190 depending on Geneve QNH

Path Terminator	Waypoint Identifier	Fly Over	Course °M(°T)	Magnetic Variation	Distance (NM)	Turn Direction	Altitude (ft)	Speed Limit (kt)	Navigation Specification
IF	SRN	-	-	-	-	-	+FL85	-	RNAV1
TF	IXORA	-	300° (302.3)	-	21.5	-	FL120 (1)	-	RNAV1
TF	ARLES	-	299° (301.9)	-	10.6	-	+FL180 (2)	-	RNAV1

(1) FL145 if R83 E is active

(2) FL180/190 depending on Geneve QNH

**DEVOX 6B (ATC discretion)**

Path Terminator	Waypoint Identifier	Fly Over	Course °M(°T)	Magnetic Variation	Distance (NM)	Turn Direction	Altitude (ft)	Speed Limit (kt)	Navigation Specification
IF	TOVSA	-	-	-	-	-	-	-	RNAV1
TF	ML401	-	235° (238.0)	-	12.7	-	FL100	-	RNAV1
TF	DEVOX	-	235° (237.8)	-	31.1	-	-	-	RNAV1

**EKPAL 6A**

Path Terminator	Waypoint Identifier	Fly Over	Course °M(°T)	Magnetic Variation	Distance (NM)	Turn Direction	Altitude (ft)	Speed Limit (kt)	Navigation Specification
IF	TOVSA	-	-	-	-	-	-	-	RNAV1
TF	APRIV	-	152° (155.1)	-	26.6	-	FL100	-	RNAV1
TF	EKPAL	-	131° (134.0)	-	17.1	-	FL 195	-	RNAV1

**ELTAR 6B**

Path Terminator	Waypoint Identifier	Fly Over	Course °M(°T)	Magnetic Variation	Distance (NM)	Turn Direction	Altitude (ft)	Speed Limit (kt)	Navigation Specification
IF	RUVAB	-	-	-	-	-	-	-	RNAV1
TF	EKBUV	-	083° (085.6)	-	23.1	-	FL110	-	RNAV1
TF	ELTAR	-	108° (111.5)	-	23.1	-	-	-	RNAV1

**GEN 6Q**

Path Terminator	Waypoint Identifier	Fly Over	Course °M(°T)	Magnetic Variation	Distance (NM)	Turn Direction	Altitude (ft)	Speed Limit (kt)	Navigation Specification
IF	TOVSA	-	-	-	-	-	-	-	RNAV1
TF	APRIV	-	152° (155.1)	-	26.6	-	FL100	-	RNAV1
TF	GEN	-	243° (245.8)	-	37.4	-	-	-	RNAV1

**GEN 7V (ATC discretion)**

TOVSA proceed on TR 207° (RDL 027 GEN VOR) via ML402 (INT RDL 027 / 34 NM GEN VOR/DME) direct to GEN VOR/DME.

MCL: ML402, FL100

Path Terminator	Waypoint Identifier	Fly Over	Course °M(°T)	Magnetic Variation	Distance (NM)	Turn Direction	Altitude (ft)	Speed Limit (kt)	Navigation Specification
IF	TOVSA	-	-	-	-	-	-	-	RNAV1
TF	ML402	-	207° (210.0)	-	11.7	-	FL100	-	RNAV1
TF	GEN	-	207° (209.9)	-	34.0	-	-	-	RNAV1

**LAGEN 5A (ATC discretion)**

Path Terminator	Waypoint Identifier	Fly Over	Course °M(°T)	Magnetic Variation	Distance (NM)	Turn Direction	Altitude (ft)	Speed Limit (kt)	Navigation Specification
IF	SRN	-	-	-	-	-	-	-	RNAV1
TF	MMP	-	266° (268.6)	-	12.1	-	-	-	RNAV1
TF	FARAK	-	244° (246.8)	-	13.1	-	-	-	RNAV1
TF	TONDA	-	197° (199.2)	-	28.3	-	-	-	RNAV1
TF	LAGEN	-	162° (164.9)	-	44.4	-	FL 110	-	RNAV1

**LOGDI 7A**

Path Terminator	Waypoint Identifier	Fly Over	Course °M(°T)	Magnetic Variation	Distance (NM)	Turn Direction	Altitude (ft)	Speed Limit (kt)	Navigation Specification
IF	ABSEM	-	-	-	-	-	-	-	RNAV1
TF	ML403	-	121° (123.9)	-	5.8	-	5000FT	-	RNAV1
TF	TUVIB	-	121° (123.9)	-	5.8	-	6000 FT	-	RNAV1
TF	LOGDI	-	145° (148.4)	-	46.7	-	FL115 (1)	-	RNAV1

(1) FL 95 if proceeding via T293 to LURUT

**LAGEN 5A (ATC discretion)**

Path Terminator	Waypoint Identifier	Fly Over	Course °M(°T)	Magnetic Variation	Distance (NM)	Turn Direction	Altitude (ft)	Speed Limit (kt)	Navigation Specification
IF	SRN	-	-	-	-	-	-	-	RNAV1
TF	MMP	-	266° (268.6)	-	12.1	-	-	-	RNAV1
TF	FARAK	-	244° (246.8)	-	13.1	-	-	-	RNAV1
TF	TONDA	-	197° (199.2)	-	28.3	-	-	-	RNAV1
TF	LAGEN	-	162° (164.9)	-	44.4	-	FL 110	-	RNAV1

**LOGDI 7A**

Path Terminator	Waypoint Identifier	Fly Over	Course °M(°T)	Magnetic Variation	Distance (NM)	Turn Direction	Altitude (ft)	Speed Limit (kt)	Navigation Specification
IF	ABSEM	-	-	-	-	-	-	-	RNAV1
TF	ML403	-	121° (123.9)	-	5.8	-	5000FT	-	RNAV1
TF	TUVIB	-	121° (123.9)	-	5.8	-	6000 FT	-	RNAV1
TF	LOGDI	-	145° (148.4)	-	46.7	-	FL115 (1)	-	RNAV1

(2) FL 95 if proceeding via T293 to LURUT

**NEDED 5A (ATC discretion)**

Path Terminator	Waypoint Identifier	Fly Over	Course °M(°T)	Magnetic Variation	Distance (NM)	Turn Direction	Altitude (ft)	Speed Limit (kt)	Navigation Specification
IF	SRN	-	-	-	-	-	-	-	RNAV1
TF	MMP	-	266° (268.6)	-	12.1	-	-	-	RNAV1
TF	FARAK	-	244° (246.8)	-	13.1	-	-	-	RNAV1
TF	TONDA	-	197° (199.2)	-	28.3	-	-	-	RNAV1
TF	NEDED	-	186° (188.7)	-	25.2	-	FL 200	-	RNAV1

**NESTI 6A**

Path Terminator	Waypoint Identifier	Fly Over	Course °M(°T)	Magnetic Variation	Distance (NM)	Turn Direction	Altitude (ft)	Speed Limit (kt)	Navigation Specification
IF	RUVAB	-	-	-	-	-	-	-	RNAV1
TF	EKBUV	-	083° (085.6)	-	23.1	-	FL120	-	RNAV1
TF	NESTI	-	083° (086.2)	-	13.0	-	FL135	-	RNAV1

**OMETO 6A**

SRN VOR proceed on TR 275° (RDL 275 SRN VOR) via BAVMI (INT RDL 275/26 NM SRN VOR/DME) direct to OMETO (INT RDL 275/41 NM SRN VOR/DME).

MCL: BAVMI, FL150; OMETO, FL180/190 depending on Geneve QNH

Path Terminator	Waypoint Identifier	Fly Over	Course °M(°T)	Magnetic Variation	Distance (NM)	Turn Direction	Altitude (ft)	Speed Limit (kt)	Navigation Specification
IF	SRN	-	-	-	-	-	+FL85	-	RNAV1
TF	BAVMI	-	275° (277.8)	-	26.1	-	FL150	-	RNAV1
TF	OMETO	-	275° (277.5)	-	15.5	-	+FL180(1)	-	RNAV1

(1) FL180/190 depending on Geneve QNH

**OSKOR 7B (ATC discretion) (1)**

TZO VOR NDB proceed on TR 075° (RDL/QDR 075 TZO VOR NDB) then continue to OSKOR (INT RDL/QDR 075/26 NM TZO DME).

MCL: RDL/QDR 075/15 NM TZO DME, FL95; OSKOR, FL125 (or FL110 if proceeding via AWY L615)

(1) Compulsory only for turbo propeller aircraft or no RNAV equipped

**OSKOR 6D (ATC discretion)**

Path Terminator	Waypoint Identifier	Fly Over	Course °M(°T)	Magnetic Variation	Distance (NM)	Turn Direction	Altitude (ft)	Speed Limit (kt)	Navigation Specification
IF	ABSEM	-	-	-	-	-	-	-	RNAV1
TF	ML403	-	121° (123.9)	-	5.8	-	5000FT	-	RNAV1
TF	TUVIB	-	121° (123.9)	-	5.8	-	6000 FT	-	RNAV1
TF	ELBOD	-	079° (082.0)	-	7.8	-	FL85	-	RNAV1
TF	VAKON	-	056° (058.4)	-	9.6	-	FL105	-	RNAV1
TF	OSKOR	-	023° (025.6)	-	11.4	-	FL125 (1)	-	RNAV1

(2) FL 110 if proceeding via AWY L615

**PEPAG 1B (ATC Discretion) (1)**

TZO VOR NDB proceed on TR039° (RDL/QDR 039 TZO VOR NDB) to OLPUR (INT. RDL/QDR 039/07 NM TZO VOR NDB/DME), then turn left to join and follow RDL 303 BRL VOR and proceed to OSVIC (INT. RDL 303/15 NM BRL VOR/DME) then continue to PEPAG (INT RDL 303/32 BRL VOR/DME).

MCA/MCL: RDL303/8 NM BRL VOR/DME, MCL 120; RDL303/11 NM BRL VOR/DME, MCL 130; RDL303/15 NM BRL VOR/DME, MCL 140; PEPAG, FL140/150 depending on Zurich QNH.

(1) Compulsory only for turbo propeller aircraft or no RNAV equipped

**WAYPOINT LIST**

Waypoint Identifier	Coordinates
ML401	44°58'24.86" N 009°21'42.85" E
ML402	44°54'59.54" N 009°28'35.90" E
ML403	45°25'49.20" N 009°30'40.39" E

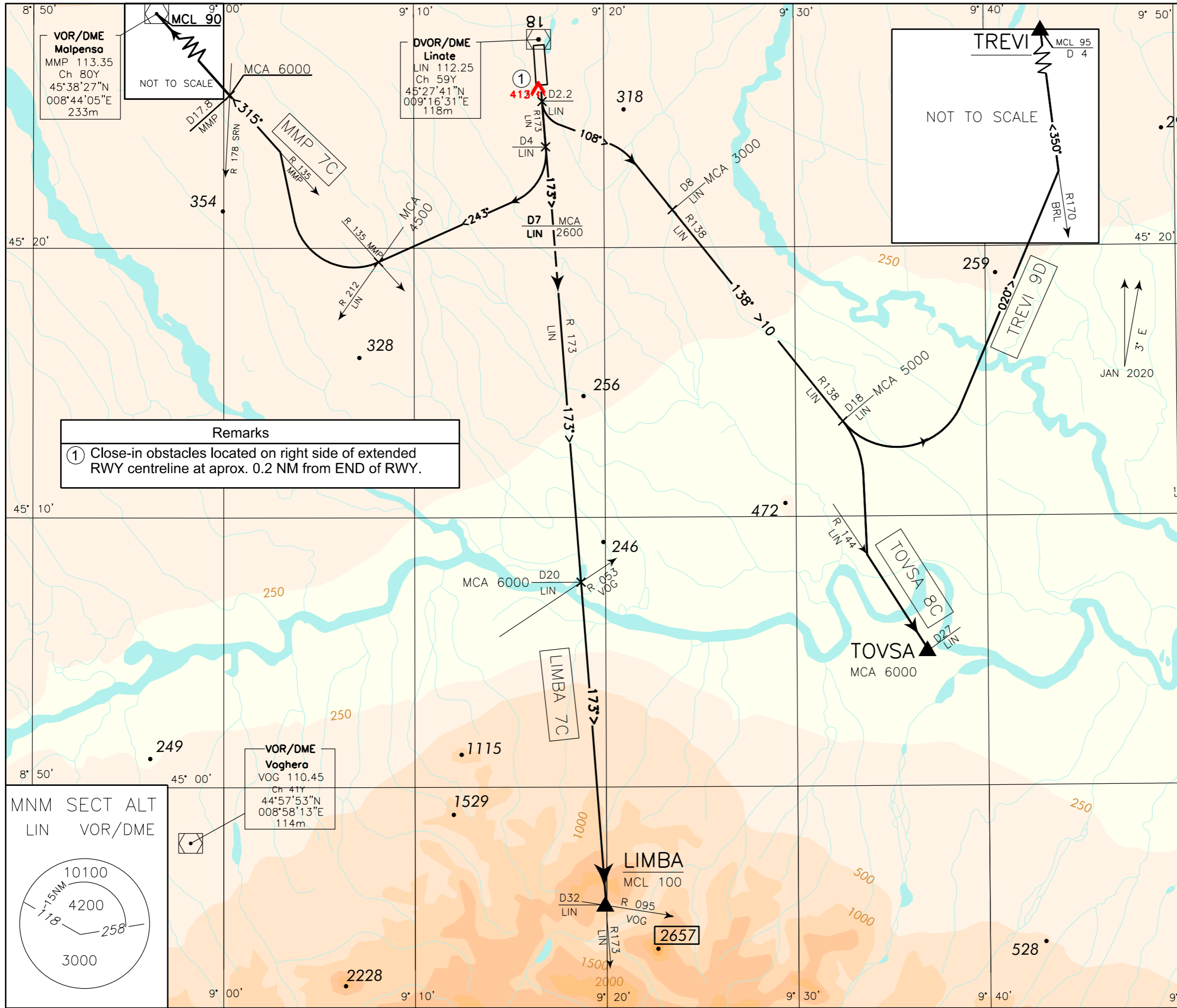
**MILANO/LINATE**  
**RWY 18**

**INITIAL CLIMB PROCEDURES & SID**

**TRANSITION ALTITUDE 6000 FT**

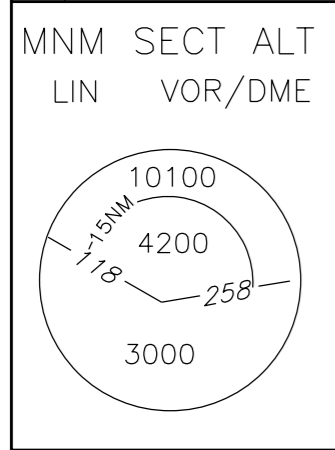
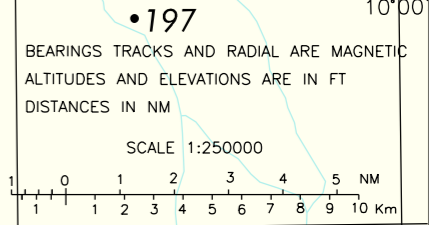
**FREQUENCIES**

TWR	Linote TWR	118.100 (118.400)
APP	Milano Radar	CH 133.180
		126.750 (SID via MMP)
ATIS	Linote Terminal Information	136.375



**Remarks**

① Close-in obstacles located on right side of extended RWY centreline at aprox. 0.2 NM from END of RWY.



CHANGE: TOVSA 8C, TREVI 9D MODIFIED.

**NOISE ABATEMENT PROCEDURES RWY 18**

In addition to what hereafter is stated, see also ENR 1.5 for general provisions.

According to ENAC provision 0003504/OML dated 05/09/2008, take-off operations from RWY 18 are permitted only when meteo conditions or safety reasons do not allow the use of the preferential RWY 36.

Following new SIDs will be used as noise abatement procedures. Consequently, all traffic departing from RWY 18 shall plan instrument departure and will be cleared by ATC according to the following scheme:

<b>Rotta pianificata</b>	<b>Radiale di uscita</b>	<b>SID assegnata</b>
OMETO, ARLES	RDL 173 LIN VOR	MMP 7C
PEPAG 1C, NESTI, ELTAR	RDL 173 LIN VOR con virata a D2.2 su HDG 108°	TREVI 9D
GEN, EKPAL, LOGDI	RDL 173 LIN VOR con virata a D2.2 su HDG 108°	TOVSA 8C
EKPAL	RDL 173 LIN VOR	LIMBA 7C

**INITIAL CLIMB PROCEDURES RWY 18**

- A) If cleared via SID LIMBA 7C, after take-off proceed on track 173° (RDL 173 LIN VOR)
- B) If cleared via SID MMP 7C, after take-off proceed on track 173° (RDL 173 LIN VOR) until 4 NM LIN DME
- C) If cleared via SID TOVSA 8C or TREVI 9D, after take-off proceed on track 173°. At 500ft AGL (840ft AMSL), not before RDL 173/2.2 NM LIN VOR/DME, turn left to join the assigned SID

**SID DESCRIPTION RWY 18**

Initial climb procedure executed:

**LIMBA 7C**

Proceed on track 173° (RDL 173 LIN VOR) inbound to LIMBA (32 NM LIN DME).

**REMARKS**

1. **PDG: 7% (426ft/NM) until passing 3000ft.**

MCA/MCL: RDL 173/7 NM LIN VOR/DME, 2600FT; RDL 173/20 NM LIN VOR/DME (INT RDL 053 VOG VOR), 6000FT;  
LIMBA (RDL 173/32 NM LIN VOR/DME, INT RDL 173 LIN VOR/RDL 095 VOG VOR), FL100

**MMP 7C**

Turn right on track 243°. Crossing RDL 212 LIN VOR turn right on track 315° (RDL 135° MMP VOR) inbound to MMP VOR

**REMARK**

**PDG: 7.0% (426 ft/NM).**

MCA/MCL: INT TR 243°/RDL 212 LIN VOR (or RDL 135 MMP VOR), 4500FT; INT RDL 135° MMP VOR /RDL 178 SRN VOR, 6000FT;  
MMP VOR, FL90

**TOVSA 8C**

Proceed on track 108° to join and follow RDL 138 LIN VOR until D18 LIN DME then turn RIGHT to join and follow RDL 144 LIN VOR inbound to TOVSA (INT. RDL 144/26.8 NM LIN VOR/DME).

**REMARK**

**PDG: between RDL 173/2.2 NM LIN VOR/DME and RDL 138/8 NM LIN VOR/DME 6.5% (395ft/NM).**

MCA/MCL: RDL 138/8 NM LIN VOR/DME, 3000FT; RDL 138/18 NM LIN VOR/DME, 5000 FT; TOVSA, 6000FT

**TREVI 9D**

Proceed on track 108° to join and follow RDL 138 LIN VOR until D18 LIN DME then turn left on track 020° to join and follow RDL 170 BRL VOR inbound to TREVI (INT. RDL 170/4.3 NM BRL VOR/DME).

**REMARK**

**PDG: between RDL 173/2.2 NM LIN VOR/DME and RDL 138/8 NM LIN VOR/DME 6.5% (395ft/NM).**

MCA/MCL: RDL 138/8 NM LIN VOR/DME, 3000FT; RDL 138/18 NM LIN VOR/DME, 5000 FT; TREVI, FL 95

Intenzionalmente bianca

*Intentionally left blank*



# MILANO/LINATE

## SID RNAV 1 RWY 18

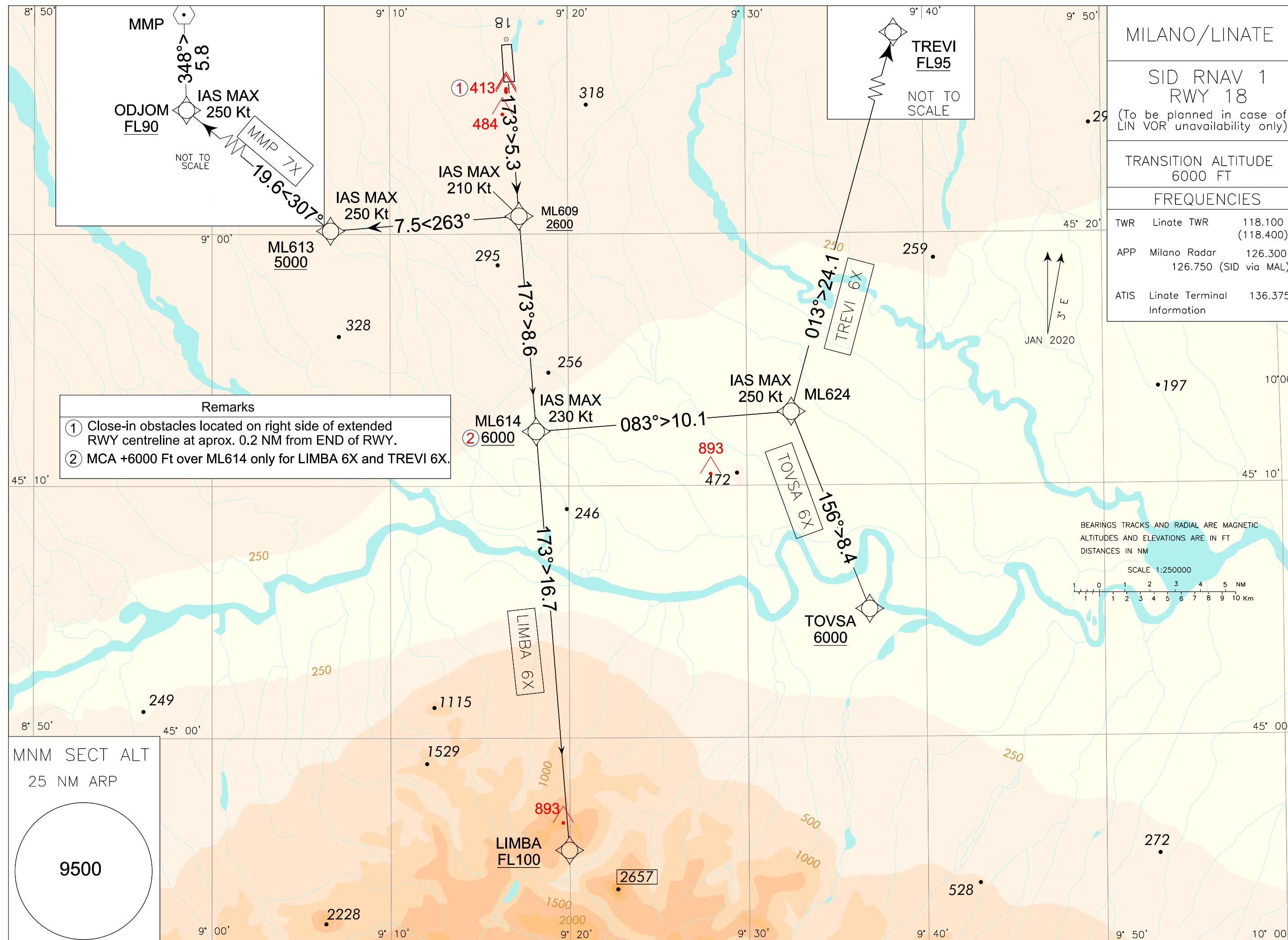
(To be planned in case of LIN VOR unavailability only)

TRANSITION ALTITUDE  
6000 FT

### FREQUENCIES

TWR	Linate TWR	118.100 (118.400)
APP	Milano Radar	126.300 126.750 (SID via MAL)
ATIS	Linate Terminal Information	136.375

CHANGE: CHART TITLE MODIFIED



**Remarks**

- ① Close-in obstacles located on right side of extended RWY centreline at aprox. 0.2 NM from END of RWY.
- ② MCA +6000 Ft over ML614 only for LIMBA 6X and TREVI 6X.

MNM SECT ALT  
25 NM ARP

9500

**SID RNAV 1 RWY 18****(To be planned in case of LIN VOR unavailability only)****NOISE ABATEMENT PROCEDURES RWY 18**

See ENR 1.5 for general provisions of Civil Aviation Authority (ENAC).

**MMP 7X**

Minimum Climb Gradient: 7.0% (425 FT/NM) until 5000 FT.

Path Terminator	Waypoint Identifier	Fly Over	Course °M (°T)	Magnetic Variation	Distance (NM)	Turn Direction	Altitude (ft)	Speed Limit (kt)	Navigation Specification
CA	-	-	173 (175.7)	+2.8	-	-	+740	-210	RNAV 1
CF	ML609	-	173 (175.7)	+2.8	-	-	+2600	-210	RNAV 1
TF	ML613	-	263 (265.7)	-	7.5	R	+5000	-250	RNAV 1
TF	ODJOM	-	307 (310.1)	-	19.6	-	+FL90	-250	RNAV 1
TF	MMP	-	348 (351.0)	-	5.8	-	-	-	RNAV 1

**LIMBA 6X**

Minimum Climb Gradient: 7.0% (425 FT/NM).

Path Terminator	Waypoint Identifier	Fly Over	Course °M (°T)	Magnetic Variation	Distance (NM)	Turn Direction	Altitude (ft)	Speed Limit (kt)	Navigation Specification
CA	-	-	173 (175.7)	+2.8	-	-	+740	-210	RNAV 1
CF	ML609	-	173 (175.7)	+2.8	-	-	+2600	-210	RNAV 1
TF	ML614	-	173 (175.6)	-	8.6	-	+6000	-230	RNAV 1
TF	LIMBA	-	173 (175.6)	-	16.7	-	+FL100	-	RNAV 1

**TOVSA 6X**

Minimum Climb Gradient: 7.0% (425 FT/NM) until ML609.

Path Terminator	Waypoint Identifier	Fly Over	Course °M (°T)	Magnetic Variation	Distance (NM)	Turn Direction	Altitude (ft)	Speed Limit (kt)	Navigation Specification
CA	-	-	173 (175.7)	+2.8	-	-	+740	-210	RNAV 1
CF	ML609	-	173 (175.7)	+2.8	-	-	+2600	-210	RNAV 1
TF	ML614	-	173 (175.7)	-	8.6	-	-	-230	RNAV 1
TF	ML624	-	083 (085.6)	-	10.1	L	-	-250	RNAV 1
TF	TOVSA	-	156 (158.6)	-	8.4	-	+6000	-	RNAV 1

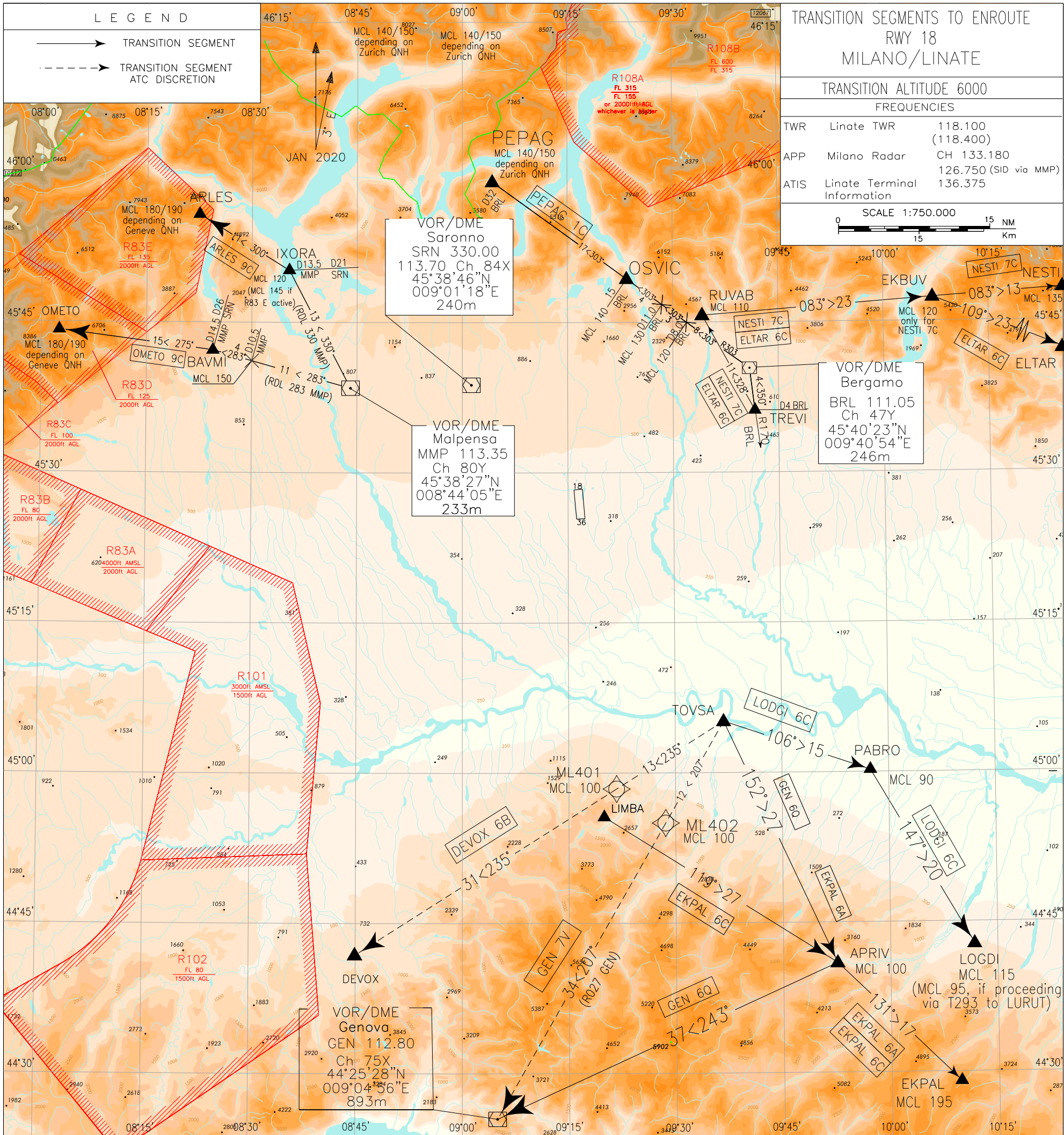
**TREVI 6X**

Minimum Climb Gradient: 7.0% (425 FT/NM) until ML614.

Path Terminator	Waypoint Identifier	Fly Over	Course °M (°T)	Magnetic Variation	Distance (NM)	Turn Direction	Altitude (ft)	Speed Limit (kt)	Navigation Specification
CA	-	-	173 (175.7)	+2.8	-	-	+740	-210	RNAV 1
CF	ML609	-	173 (175.7)	+2.8	-	-	+2600	-210	RNAV 1
TF	ML614	-	173 (175.6)	-	8.6	-	+6000	-230	RNAV 1
TF	ML624	-	083 (085.6)	-	10.1	L	-	-250	RNAV 1
TF	TREVI	-	013 (015.4)	-	24.1	-	+FL95	--	RNAV 1

**WAYPOINT LIST**

Waypoint Identifier	Coordinates
ML609	45°20'45.64"N - 009°17'15.81" E
ML613	45°20'11.04"N - 009°06'39.71" E
ML614	45°12'12.94"N - 009°18'11.16" E
ML624	45°12'58.25"N - 009°32'29.93" E



**TRANSITION SEGMENT TO ENROUTE DESCRIPTIONS RWY 18****ARLES 9C**

MMP VOR proceed on TR 330° (RDL 330 MMP VOR) to IXORA (INT RDL 330/13.5 NM MMP VOR/DME or RDL 330 MMP VOR/RDL 300 SRN VOR), then ARLES (INT RDL 300/32 NM SRN VOR/DME).

MCL: IXORA, FL120 (FL 145 if R 83 E active); ARLES, FL180/190 depending on Geneva QNH

**PEPAG 1C**

from TREVI proceed on TR 350° (RDL 170 BRL VOR) to BRL VOR/DME, then turn left on TR 303° (RDL 303 BRL VOR) and proceed to OSVIC (INT RDL 303/15 NM BRL VOR/DME) then continue to PEPAG (INT RDL 303/32 NM BRL VOR/DME).

MCL: BRL VOR, FL105; RDL303/8 NM BRL VOR/DME, MCL 120; RDL303/11 NM BRL VOR/DME, MCL 130;  
RDL303/15 NM BRL VOR/DME, MCL 140; PEPAG, FL140/150 depending on Zurich QNH

**DEVOX 6B (ATC discretion)**

Path Terminator	Waypoint Identifier	Fly Over	Course °M(°T)	Magnetic Variation	Distance (NM)	Turn Direction	Altitude (ft)	Speed Limit (kt)	Navigation Specification
IF	TOVSA	-	-	-	-	-	-	-	RNAV1
TF	ML401	-	235° (238.0)	-	12.7	-	FL100	-	RNAV1
TF	DEVOX	-	235° (237.8)	-	31.1	-	-	-	RNAV1

**EKPAL 6A**

Path Terminator	Waypoint Identifier	Fly Over	Course °M(°T)	Magnetic Variation	Distance (NM)	Turn Direction	Altitude (ft)	Speed Limit (kt)	Navigation Specification
IF	TOVSA	-	-	-	-	-	-	-	RNAV1
TF	APRIV	-	152° (155.1)	-	26.7	-	FL100	-	RNAV1
TF	EKPAL	-	131° (134.0)	-	17.1	-	FL 195	-	RNAV1

**EKPAL 6C**

Path Terminator	Waypoint Identifier	Fly Over	Course °M(°T)	Magnetic Variation	Distance (NM)	Turn Direction	Altitude (ft)	Speed Limit (kt)	Navigation Specification
IF	LIMBA	-	-	-	-	-	-	-	RNAV1
TF	APRIV	-	119° (122.1)	-	27.5	-	FL100	-	RNAV1
TF	EKPAL	-	131° (134.0)	-	17.1	-	FL 195	-	RNAV1

**ELTAR 6C**

Path Terminator	Waypoint Identifier	Fly Over	Course °M(°T)	Magnetic Variation	Distance (NM)	Turn Direction	Altitude (ft)	Speed Limit (kt)	Navigation Specification
IF	TREVI	-	-	-	-	-	-	-	RNAV1
TF	RUVAB	-	328° (331.3)	-	10.8	-	FL110	-	RNAV1
TF	EKBUV	-	083° (085.6)	-	23.1	R	-	-	RNAV1
TF	ELTAR	-	109° (111.5)	-	23.1	-	-	-	RNAV1

**GEN 6Q**

Path Terminator	Waypoint Identifier	Fly Over	Course °M(°T)	Magnetic Variation	Distance (NM)	Turn Direction	Altitude (ft)	Speed Limit (kt)	Navigation Specification
IF	TOVSA	-	-	-	-	-	-	-	RNAV1
TF	APRIV	-	152° (155.1)	-	26.7	-	FL100	-	RNAV1
TF	GEN	-	243° (245.8)	-	37.4	-	-	-	RNAV1

**GEN 7V (ATC discretion)**

TOVSA proceed on TR 207° (RDL 027 GEN VOR) via ML402 (INT RDL 027 / 34 NM GEN VOR/DME) direct to GEN VOR/DME.

MCL: ML402, FL100

Path Terminator	Waypoint Identifier	Fly Over	Course °M(°T)	Magnetic Variation	Distance (NM)	Turn Direction	Altitude (ft)	Speed Limit (kt)	Navigation Specification
IF	TOVSA	-	-	-	-	-	-	-	RNAV1
TF	ML402	-	207° (210.0)	-	11.7	-	FL100	-	RNAV1
TF	GEN	-	207° (209.9)	-	34.0	-	-	-	RNAV1

**LOGDI 6C**

Path Terminator	Waypoint Identifier	Fly Over	Course °M(°T)	Magnetic Variation	Distance (NM)	Turn Direction	Altitude (ft)	Speed Limit (kt)	Navigation Specification
IF	TOVSA	-	-	-	-	-	-	-	RNAV1
TF	PABRO	-	106° (108.5)	-	15.4	-	FL90	-	RNAV1
TF	LOGDI	-	147° (149.6)	-	20.2	-	FL115 (1)	-	RNAV1

(1) FL 95 if proceeding via T293 to LURUT

**NESTI 7C**

Path Terminator	Waypoint Identifier	Fly Over	Course °M(°T)	Magnetic Variation	Distance (NM)	Turn Direction	Altitude (ft)	Speed Limit (kt)	Navigation Specification
IF	TREVI	-	-	-	-	-	-	-	RNAV1
TF	RUVAB	-	328° (331.3)	-	10.8	-	FL110	-	RNAV1
TF	EKBUV	-	083° (085.6)	-	23.1	R	FL120	-	RNAV1
TF	NESTI	-	083° (086.2)	-	13.0	-	FL135	-	RNAV1

**OMETO 9C**

MMP VOR proceed on TR 283° (RDL 283 MMP VOR) to BAVMI (INT RDL 283/14.5 NM MMP VOR/DME or RDL 283 MMP VOR/ RDL 275 SRN VOR) then turn left and proceed on RDL 275 SRN VOR direct to OMETO (INT RDL 275/42 NM SRN VOR/DME).

MCL: INT RDL 283/10.5 NM MMP VOR/DME, FL 150; OMETO, FL180/190 depending on Geneva QNH

**WAYPOINT LIST**

Waypoint Identifier	Coordinates
ML401	44°58'24.86" N 009°21'42.85" E
ML402	44°54'59.54" N 009°28'35.90" E

Intenzionalmente bianca

*Intentionally left blank*



