
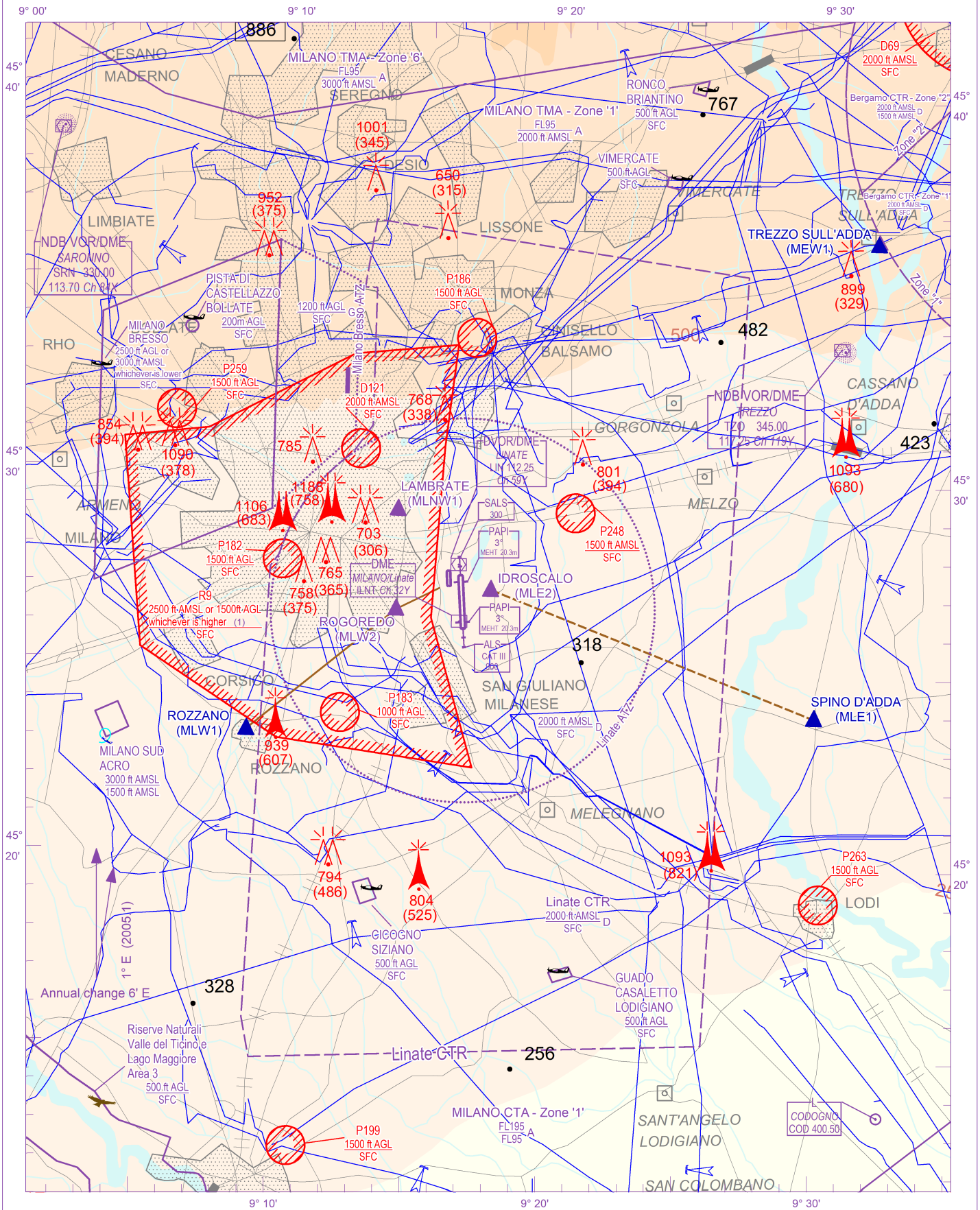


SCALE 1:250.000 	FIS Milano Information 124.925 APP Milano Radar CH 133.180 TWR Linate TWR 118.100 (118.400) ATIS Linate Terminal Information 136.375	AD ELEV 353	L M L	MILANO/LINATE
--	---	---------------------------	-------------	----------------------



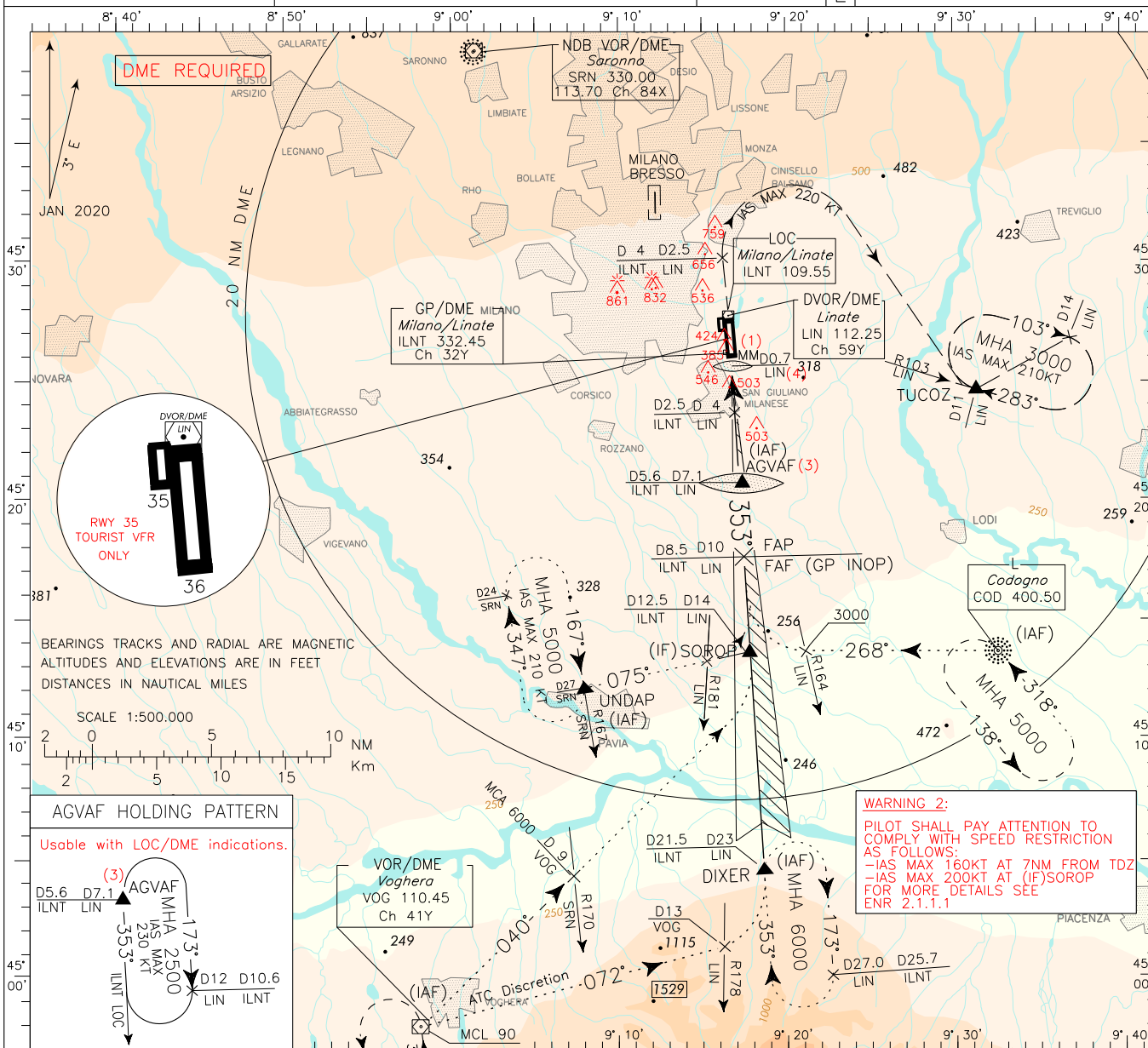
AIRSPACE CLASSIFICATION See AIP ENR 1.4 TRANSITION ALT 6000 FT ELEV AND ALT IN FT IF NOT OTHERWISE INDICATED	REMARK (1) R9: restrictions and conditions for crossing see AIP-Italia ENR 2.1.2.23	WARNING
---	--	---------

DOC 8168 - ED.5 - 2006 - AMDT. 4

WARNING:
Some users on ILS APCH at LIML reported false LOC captures. Pilot attention is drawn to pay max caution. See also AIP-ENR 1.3

APP Milano Radar CH 133.180
TWR Linate TWR 118.100 (118.400)
ATIS Linate Terminal Information 136.375

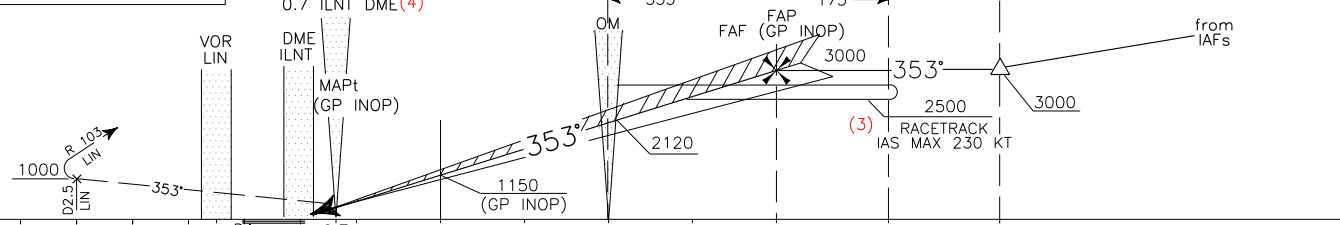
AD ELEV 353
MILANO/LINATE
ILS-Z RWY 36



TRANSITION ALT 6000

MISSED APPROACH:
Proceed on TR 353° climbing to 3000 ft. At 2.5NM LIN DME (4NM ILNT DME) after LIN VOR at 1000 ft or above turn right (IAS MAX 220 kt) until joining RDL 103 LIN VOR inbound to TUCOZ missed approach holding pattern.
Hold between 11 NM and 14 NM LIN DME, inbound TR 283°, right turn, IAS MAX 210 kt.

ILS RDH 15.91 M
GP 3°

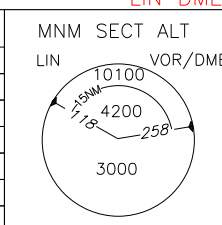


ILNT DME	D3	D2	D1	D0	D1	D2	D3	D4	D5	D6	D7	D8	D9	D10	D11	D12	D13	D14	ILNT DME
LIN DME	D3	D2	D1	D0	D1	D2	D3	D4	D5	D6	D7	D8	D9	D10	D11	D12	D13	D14	LIN DME

OCA (OCH)	A	B	C	D
ILS CAT I (2)	537 (200)			
ILS CAT II (2)	402 (65)	419 (82)	431 (94)	445 (108)
GP INOP	760 (423)			
CIRCLING (EAST OF RWY)	850 (497)	900 (547)	1200 (847)	

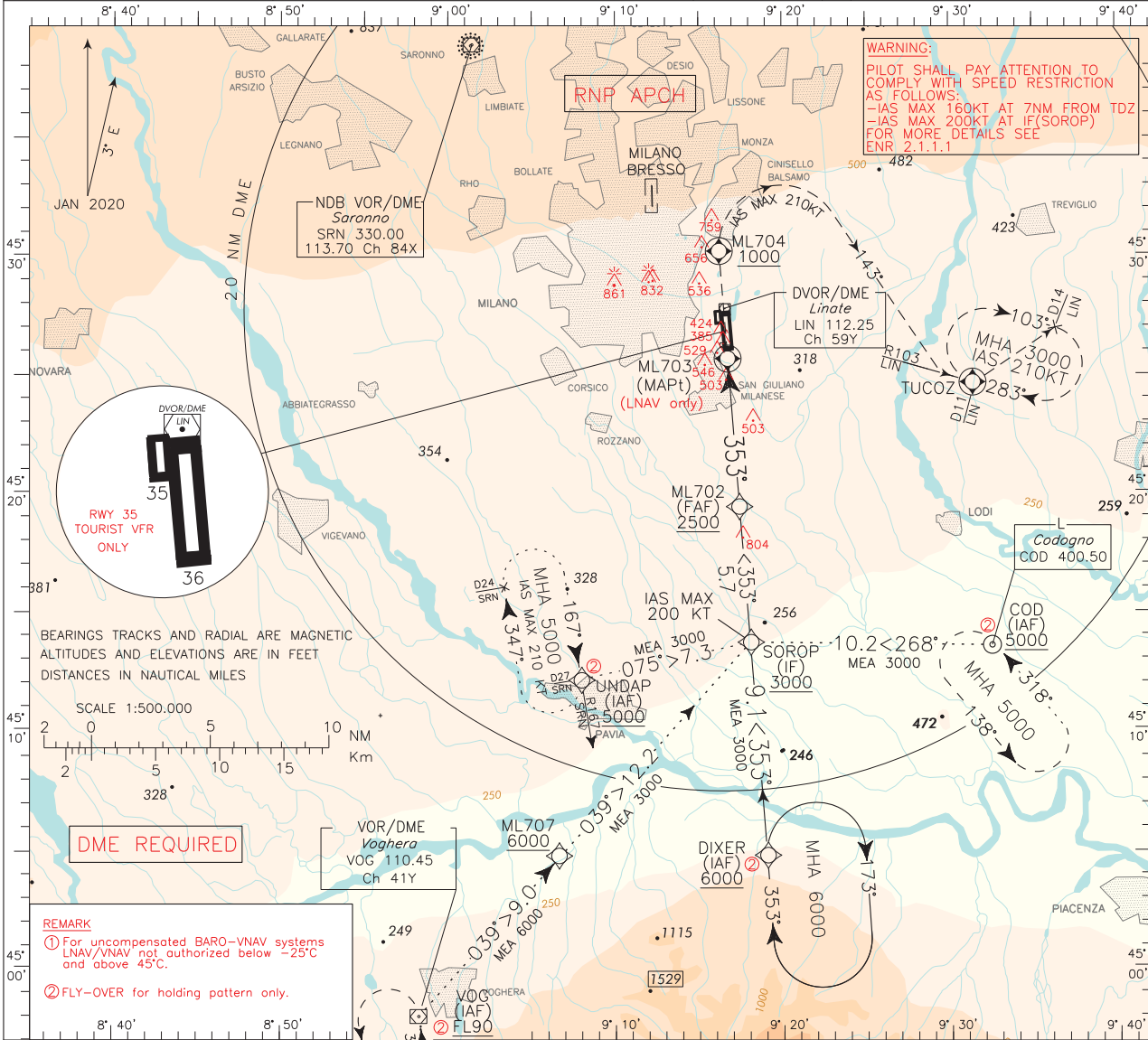
REMARK:
(1) MM is identified as MAPt when GP inoperative
(2) ILS CAT I/II: Significant obstacle RWY slope.
(3) Racetrack procedure over AGVAF ATC Discretion and not usable in case of GP INOP.
(4) When inoperative MM is replaced by 0.7 NM ILNT DME

GS	FT PER MIN	OM-THR
80	420	4 : 03
100	525	3 : 14
120	630	2 : 42
140	735	2 : 19
160	845	2 : 01
180	950	1 : 48

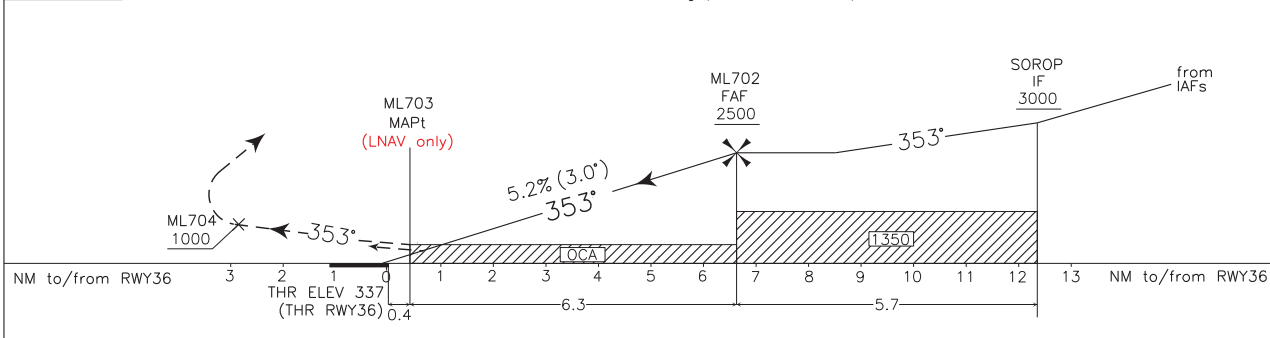


DOC 8168 – ED 5 – 2006 – AMDT.4
CHANGE: PAGE RENUMBERED

EGNOS CH 52839 E36A	APP TWR ATIS	Milano Radar Linate TWR Linate Terminal Information	CH 133.180 118.100 (118.400) 136.375	AD ELEV 353	L M L	MILANO/LINATE RNP RWY 36
---------------------------	--------------------	---	---	----------------	-------------	-----------------------------



TRANSITION ALT 6000
TCH 15M
MISSED APPROACH: Climb to 3000 Ft. Continue on course 353° to ML704 at or above 1000 ft then turn right (IAS MAX 210kt) on course 103° inbound to TUCOZ. Holding pattern. Hold as published.



OCA (OCH)		A	B	C	D	CIRCLING SECTORS 	Timing is not permitted	FT PER MIN		DIST ML703	ALT (HGT)		MNM SECT ALT ARP
STRAIGHT IN APPROACH	LPV	650(313)	660(323)	670(333)	680(343)			GS					
	LNAV/VNAV	730(393)	742(405)	750(413)	760(423)			80	425	6	2410 (2073)		
	LNAV	800 (463)						100	530	5	2090 (1753)		
	CIRCLING (EAST OF RWY)	900 (547)		1200 (847)				120	635	4	1780 (1443)		
								140	740	3	1560 (1223)		
								160	850	2	1140 (803)		
								180	955	1	820 (483)		

TABULAR DESCRIPTION

RNP RWY 36

Serial Number	Path Terminator	Waypoint Identifier	Fly Over	Course °M(°T)	Magnetic Variation	Distance (NM)	Turn Direction	Altitude (ft)	Speed Limit (kt)	VPA/TCH	Navigation Specification
010	IF	DIXER	-	-	-	-	-	+6000	-	-	RNAV1
020	TF	SOROP	-	353° (355.6°)	-	9.1	-	+3000	-200	-	RNAV1
010	IF	UNDAP	-	-	-	-	-	+5000	-	-	RNAV1
020	TF	SOROP	-	075° (077.6°)	-	7.3	-	+3000	-200	-	RNAV1
010	IF	VOG	-	-	-	-	-	+FL90	-	-	RNAV1
020	TF	ML707	-	039° (041.4°)	-	9.0	-	+6000	-	-	RNAV1
030	TF	SOROP	-	039° (041.4°)	-	12.2	-	+3000	-200	-	RNAV1
010	IF	COD	-	-	-	-	-	+5000	-	-	RNAV1
020	TF	SOROP	-	268° (270.9°)	-	10.2	-	+3000	-200	-	RNAV1
010	IF	SOROP	-	-	-	-	-	+3000	-200	-	RNAV1
030	TF	ML702	-	353° (355.6°)	-	5.7	-	+2500	-	-	RNP APCH
040	TF	ML703 MAP ⁽¹⁾	Y	353° (355.6°)	-	-	-	+800 ⁽¹⁾	-	-	RNP APCH
050	-	RWY36	-	353° (355.6°)	-	-	-	-	-	-3/15	RNP APCH
060	CF	ML704	Y	353° (355.6°)	+2.8	-	-	+1000	-210	-	RNP APCH
070	CF	TUCOZ	Y	103° (106.5°)	+2.8	12.1	R	+3000	-210	-	RNP APCH
080	HM	TUCOZ	Y	283° (286.5°)	-	-	R	+3000	-210	-	Conventional

(1) For LNAV only

WAYPOINT LIST
RNP RWY 36

Waypoint Identifier	Coordinates
ML702	45°19'26.35"N 009°17'24.33"E
ML703	45°25'41.79"N 009°16'43.96"E
ML704	45°30'10.92"N 009°16'14.93"E
ML707	45°04'36.83"N 009°06'37.00"E

SBAS FAS DATA BLOCK LIML RNP RWY 36

INPUT DATA	
PARAMETERS	VALUES
Operation Type	0
SBAS Provider	1
Airport Identifier	LIML
Runway	36
Runway Direction	0
Approach Performance Designator	0
Route Indicator	
Reference Path Data Selector	0
Reference Path Identifier	E36A
LTP/FTP Latitude	452603.5020N
LTP/FTP Longitude	0091641.6225E
LTP/FTP Ellipsoidal Height (metres)	145,1
FPAP Latitude	452723.4045N
Delta FPAP Latitude (seconds)	79.9025
FPAP Longitude	0091633.0090E
Delta FPAP Longitude (seconds)	-8.6135
Threshold Crossing Height	50.0
TCH Units Selector	0
Glidepath Angle (degrees)	3
Course Width (metres)	105
Length Offset (metres)	32
HAL	40
VAL	50

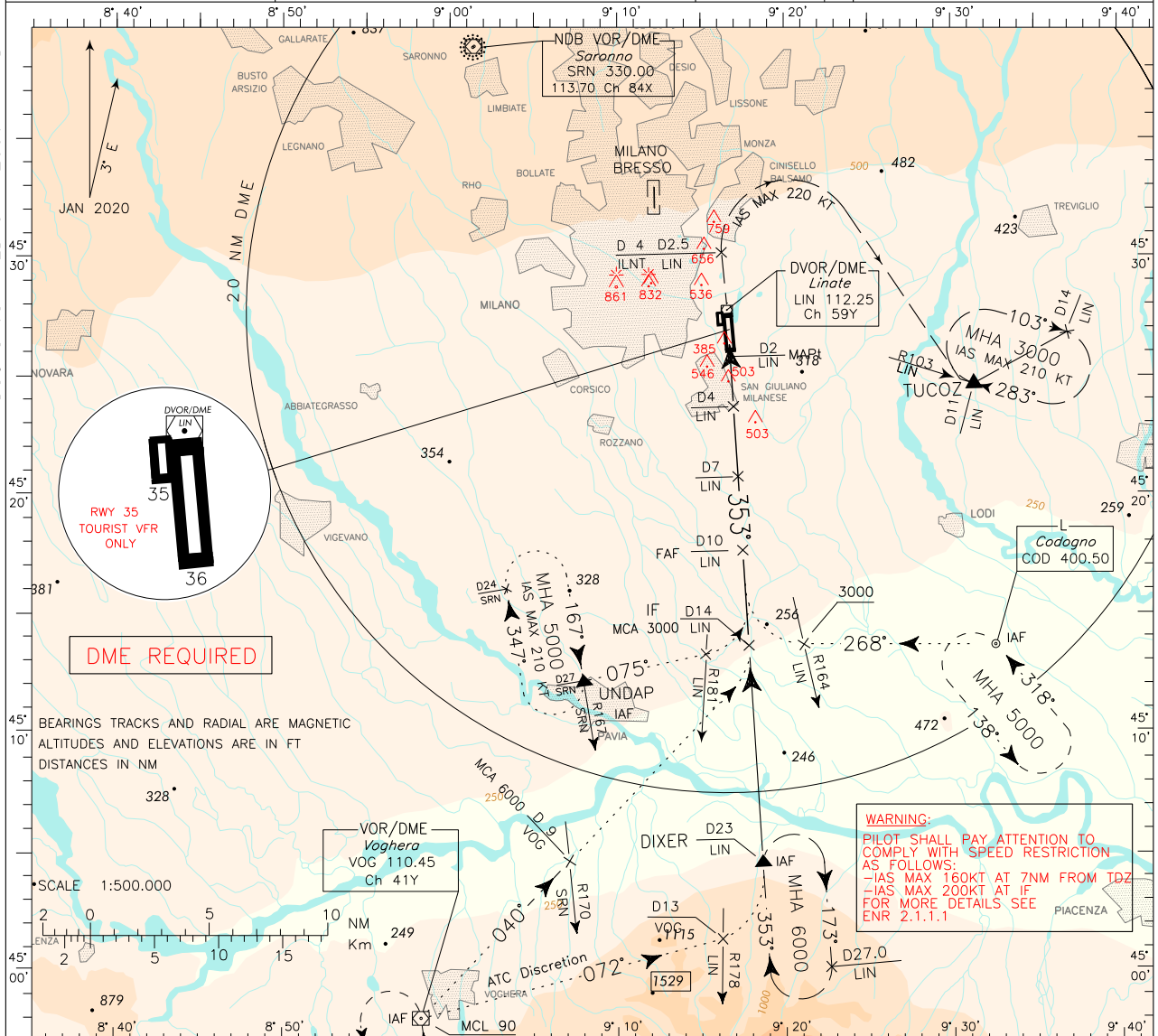
OUTPUT DATA	
Data Block	10 0C 0D 09 0C 24 00 00 01 36 33 05 DC 8F 7F 13 2D 56 FB 03 AB 19 3D 70 02 B5 BC FF F4 01 2C 01 64 04 C8 FA DF C8 C8 0E
Calculated CRC Value	DFC8C80E

Intenzionalmente bianca

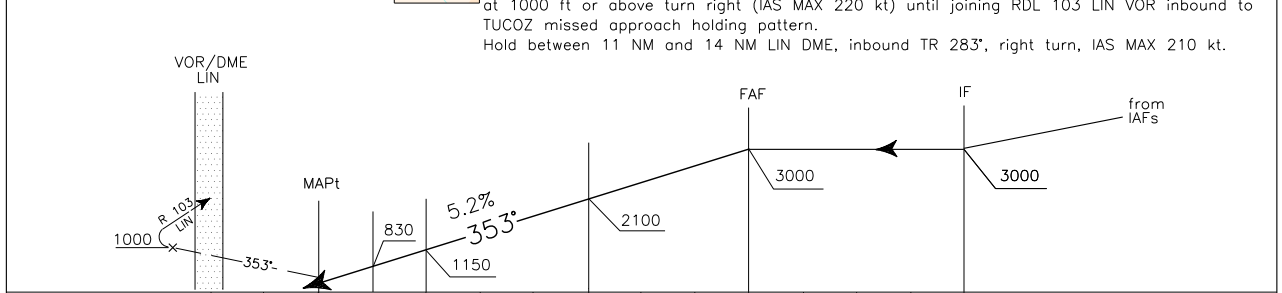
Intentionally left blank

APP Milano Radar	CH 133.180	AD ELEV	MILANO/LINATE
TWR Linate TWR	118.100 (118.400)	353	VOR
ATIS Linate Terminal Information	136.375		RWY 36

CHANGE: LNE L DISMISSED. PAGE RENUMBERED. DOC 8168 – ED 5 – 2006 – AMDT.4

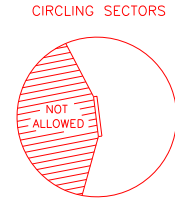


TRANSITION ALT 6000

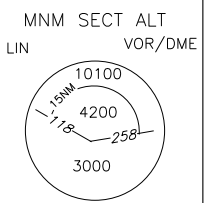


LIN DME	D0	D1	D2	D3	D4	D5	D6	D7	D8	D9	D10	D11	D12	D13	D14	LIN DME									
THR ELEV	337																								
NM	5	4	3	2	1	0	1	2	3	4	5	6	7	8	9	10	11	12	13	14	15	16	17	18	NM

OCA (OCH)	A	B	C	D
STRAIGHT IN APPROACH	800 (463)			
CIRCLING (EAST OF RWY)	900 (547)		1200 (847)	



GS	FT PER MIN	DIST	ALT (HGT)
80	420	7LIN	2100 (1763)
100	525	6LIN	1780 (1443)
120	630	5LIN	1465 (1128)
140	735	4LIN	1150 (813)
160	845	3LIN	830 (493)
180	950	2LIN	510 (173)

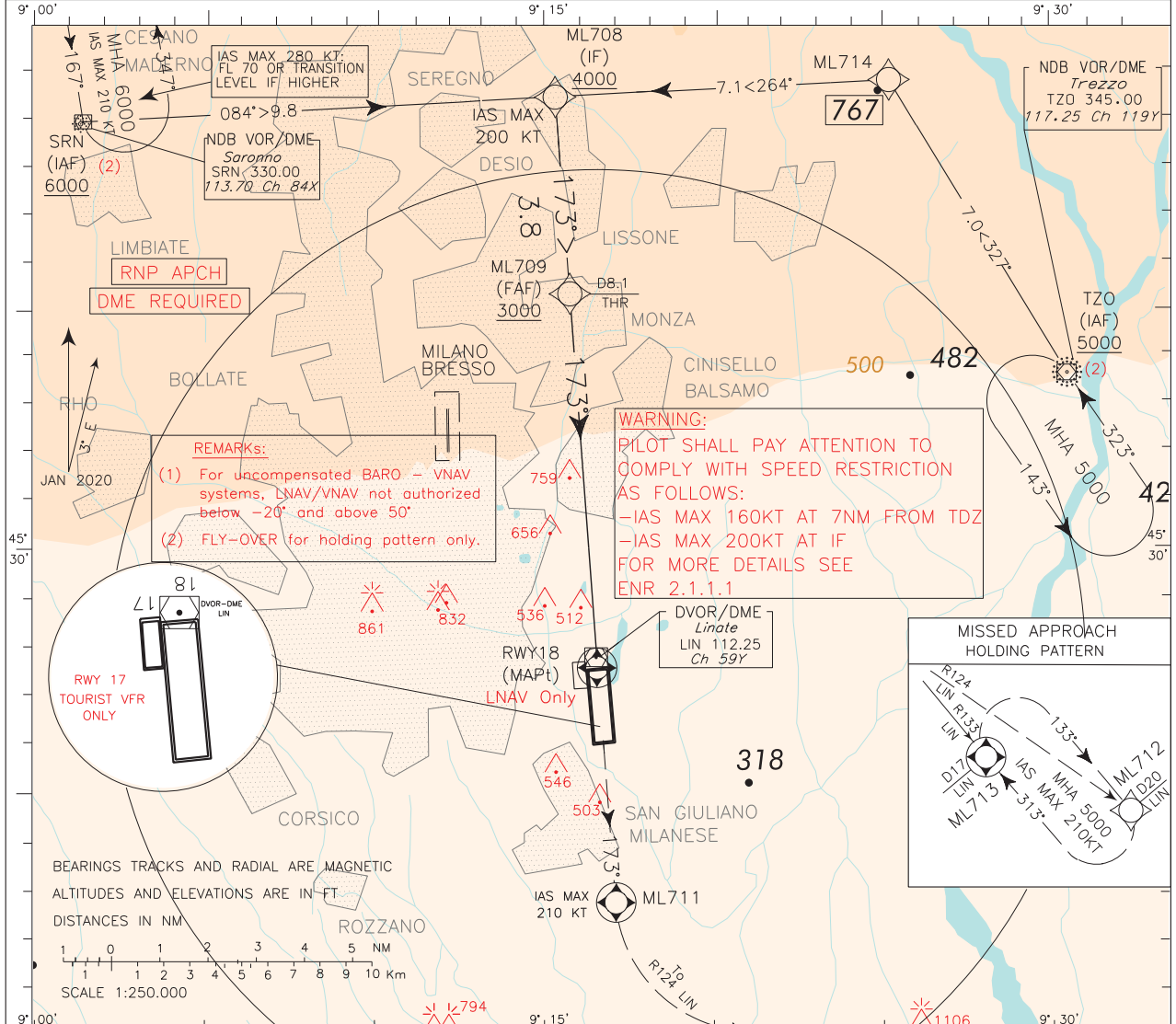


ICAO – INSTRUMENT APPROACH CHART

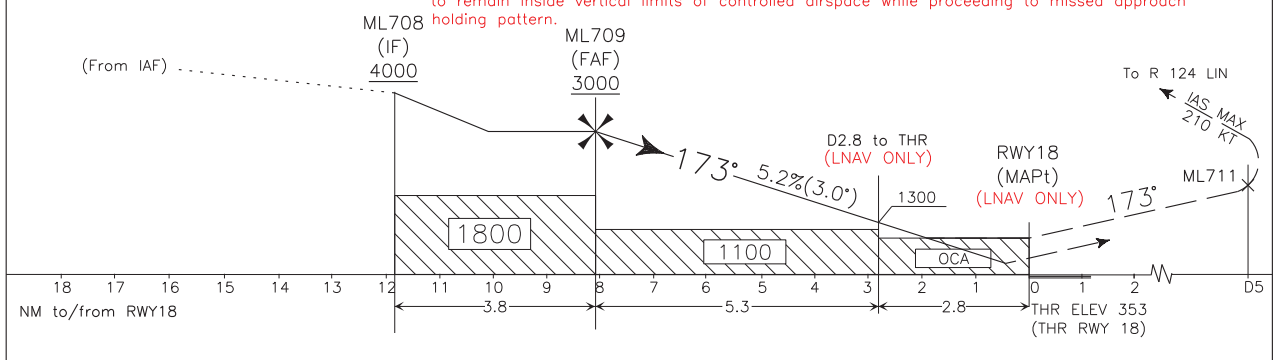
AD 2 LIML 5-13

DOC 8168 – ED.6 – 2014 – AMDT 7

EGNOS CH 46177 E18A	APP <i>Milano Radar</i> TWR <i>Linate TWR</i> ATIS <i>Linate Terminal Information</i>	CH 133.180 118.100 (118.400) 136.375	AD ELEV 353	L M L	MILANO/LINATE RNP RWY 18
---------------------------	---	--	----------------	-------------	-----------------------------



TRANSITION ALT 6000
 TCH 15 M
 MISSED APPROACH: Climb to 5000 Ft. Continue on course 173° to ML711 then turn left (IAS MAX 210 kt) on course 124° (RDL 124 LIN VOR) inbound to ML712 (D20 LIN DME) to join missed approach holding pattern.
 Hold between 17 NM and 20 NM LIN DME, inbound TR 313° (R 133 LIN VOR), right turn, IAS MAX 210 kt.
 REMARK: (3) Missed approach obstacles clearance is provided by 2.5% gradient. 3.5% (213ft/NM) is required to remain inside vertical limits of controlled airspace while proceeding to missed approach holding pattern.



OCA (OCH)		A	B	C	D	CIRCLING SECTORS 	GS	FT PER MIN	FAF-THR	DIST FROM THR	ALT (HGT)	MNM SECT ALT 25NM	ARP
STRAIGHT IN APPROACH	LPV	670 (317)	680 (327)	690 (337)	700 (347)			80	421	6:07	8.1NM	6NM	2310 (1957)
	LNAV/VNAV	690 (337)	700 (347)	710 (357)	720 (367)	100		527	4:53	5NM	1990 (1637)		
	LNAV	800 (447)				120		632	4:05	4NM	1675 (1332)		
	CIRCLING (EAST OF RWY)	900 (547)		1200 (847)		140		737	3:30	3NM	1335 (1003)		
						160	842	3:03	2NM	1040 (685)			
						180	948	2:43	1NM	720 (367)			

TABULAR DESCRIPTION**RNP RWY 18**

Serial Number	Path Terminator	Waypoint Identifier	Fly Over	Course °M(°T)	Magnetic Variation	Distance (NM)	Turn Direction	Altitude (ft)	Speed Limit (kt)	VPA/TCH	Navigation Specification
010	IF	SRN	-	-	-	-	-	+6000	-	-	RNAV1
020	TF	ML708	-	084° (086.9°)	-	9.8	-	+4000	-200	-	RNAV1
010	IF	TZO	-	-	-	-	-	+5000	-	-	RNAV1
020	TF	ML714	-	327° (330.0°)	-	7.0	-	-	-	-	RNAV1
030	TF	ML708	-	264° (267.2°)	-	7.1	-	+4000	-200	-	RNAV1
010	IF	ML708	-	-	-	-	-	+4000	-200	-	RNAV1
040	TF	ML709	-	173° (175.6°)	-	3.8	-	+3000	-	-	RNP APCH
050	TF	RWY18	Y	173° (175.6°)	-	-	-	-	-	-3°/15	RNP APCH
060	CF	ML711	Y	173° (175.6°)	+2.8	-	-	-	-210	-	RNP APCH
070	CF	ML712	-	124° (126.0°)	+2.8	17.1	-	-	-210	-	RNP APCH
080	HM	ML713	Y	313° (316.0°)	+2.8	-	R	+5000	-210	-	CONVENTIONAL

(1) For LNAV only

**WAYPOINT LIST
RNP RWY 18**

Waypoint Identifier	Coordinates
ML708	45°39'15.95"N 009°15'15.90"E
ML709	45°35'30.58"N 009°15'40.35"E
ML711	45°22'42.20"N 009°17'03.30"E
ML712	45°15'47.52"N 009°39'16.68"E
ML713	45°15'26.14"N 009°33'11.29"E
ML714	45°39'37.04"N 009°25'25.91"E

SBAS FAS DATA BLOCK LIML RNP RWY 18

INPUT DATA	
PARAMETERS	VALUES
Operation Type	0
SBAS Provider	1
Airport Identifier	LIML
Runway	18
Runway Direction	0
Approach Performance Designator	0
Route Indicator	
Reference Path Data Selector	0
Reference Path Identifier	E18A
LTP/FTP Latitude	452722.3745N
LTP/FTP Longitude	0091633.1205E
LTP/FTP Ellipsoidal Height (metres)	150.1
FPAP Latitude	452603.5020N
Delta FPAP Latitude (seconds)	-78.8725
FPAP Longitude	0091641.6225E
Delta FPAP Longitude (seconds)	8.5020
Threshold Crossing Height	15.00
TCH Units Selector	1
Glidepath Angle (degrees)	3.00
Course Width (metres)	105.00
Length Offset (metres)	0
HAL	40
VAL	50

OUTPUT DATA	
Data Block	10 0C 0D 09 0C 12 00 00 01 38 31 05 0D F8 81 13 C1 13 FB 03 DD 19 CF 97 FD 6C 42 00 2C 81 2C 01 64 00 C8 FA 27 75 7C 34
Calculated CRC Value	27757C34

REQUIRED ADDITIONAL DATA (NOT CRC WRAPPED)	
ICAO Code	LI
LTP/FTP Orthometric Height (metres)	107.6
FPAP Orthometric Height (metres)	102.8

Intenzionalmente bianca

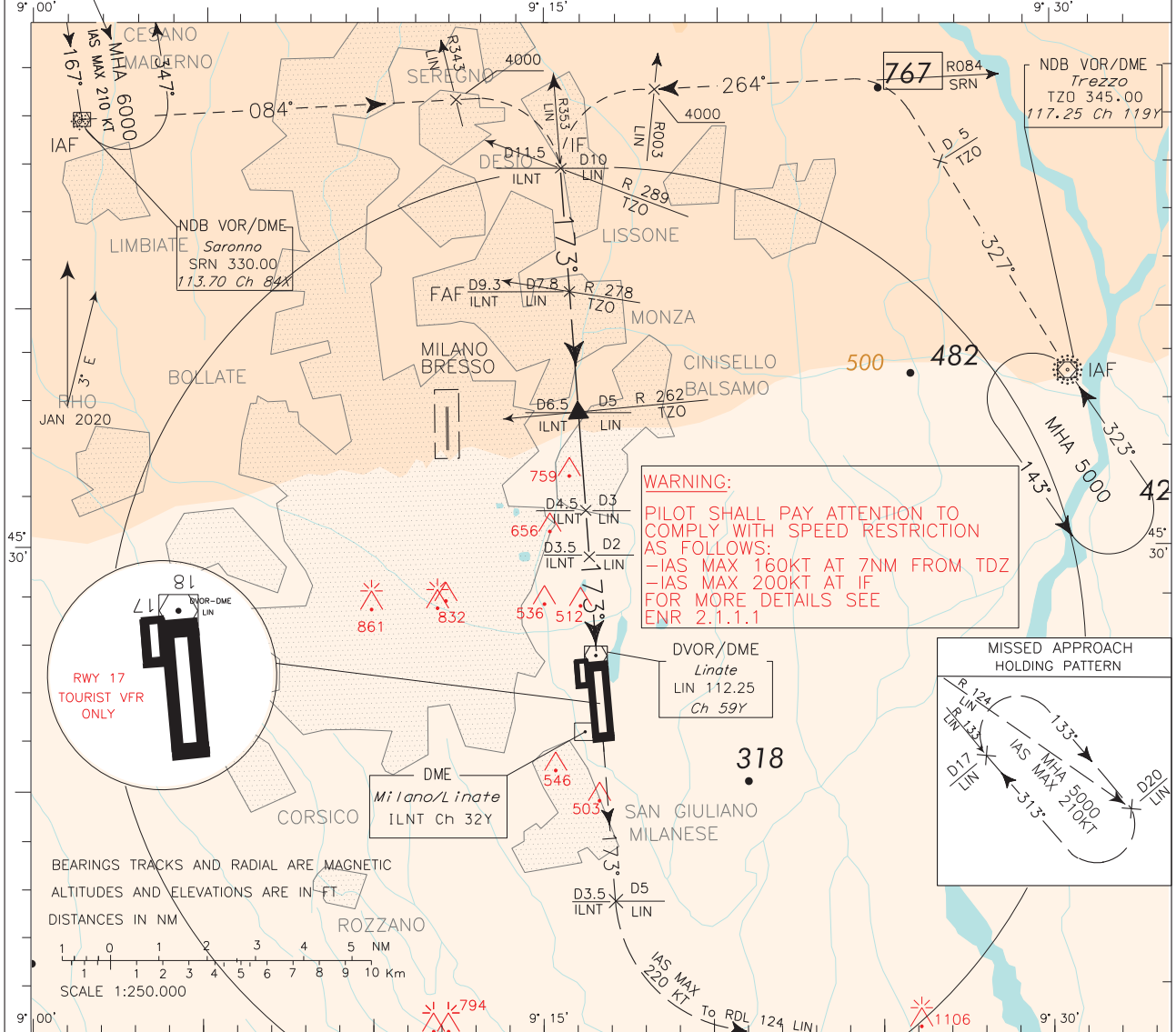
Intentionally left blank

ICAO - INSTRUMENT APPROACH CHART

AD 2 LIML 5-17

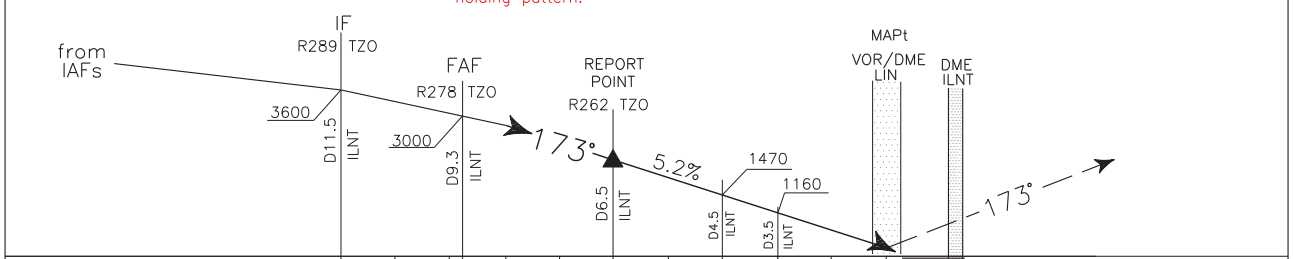
CHANGE: LNE L DISMISSED. PAGE RENUMBERED. DOC 8168 - ED.5 - 2006 - AMDT.4

IAS MAX 280 KT: FL 70 OR TRANSITION LEVEL IF HIGHER	APP <i>Milano Radar</i>	CH 133.180	AD ELEV	L M L	MILANO/LINATE	
	TWR <i>Linate TWR</i>	118.100 (118.400)	353		VOR	RWY 18
	ATIS <i>Linate Terminal Information</i>	136.375				



TRANSITION ALT 6000 MISSED APPROACH: Proceed on track 173° climbing to 5000 ft. At 5 NM LIN DME turn left (IAS MAX 220kt) until joining RDL 124 LIN VOR inbound to missed approach holding pattern.

Hold between 17 NM and 20 NM LIN DME, inbound TR 313° (R 133 LIN VOR), right turn, IAS MAX 210 kt.
REMARK: Missed approach obstacles clearance is provided by 2.5% gradient. 3.5% (213ft/NM) is required to remain inside vertical limits of controlled airspace while proceeding to missed approach holding pattern.



LIN DME (NM)	D10	D9	D8	D7	D6	D5	D4	D3	D2	D1	D0	THR	ELEV 353	LIN DME (NM)								
16	15	14	13	12	11	10	9	8	7	6	5	4	3	2	1	0	1	2	3	4	5	6
													THR 18 (NM)									

OCA (OCH)		A	B	C	D	CIRCLING SECTORS 	GS	FT PER MIN	DIST	ALT (HGT)	MNM SECT ALT 		
STRAIGHT IN APPROACH	VOR+DME	800 (447)					80	421	6LIN	2430 (2077)			
	VOR	1050 (697)					100	527	5LIN	2110 (1757)			
							120	632	4LIN	1790 (1437)			
CIRCLING (EAST OF RWY)		1050 (697)		1200 (847)		140	737	3LIN	1470 (1117)	160	842	2LIN	1155 (802)
						180	948	1LIN	840 (487)				